



**LITCHFIELD**  
MINERALS LIMITED

HARTS RANGE · OONAGALABI CORRIDOR, NT

AILERON / IRINDINA PRESENTATION · 2026

# CHASING COPPER AT THE CRUSTAL BOUNDARY

A belt-scale Cu-Ni-PGE thesis at the Aileron-Irindina boundary, assessed the way a major would assess it.

***Come and see what we see.***

# DISCLAIMER

Nature of document. This presentation has been prepared and issued by Litchfield Minerals Limited (the Company). The information is in summary form and is not a complete or accurate representation of all matters a reader should consider in evaluating the Company. While management has taken care to ensure accuracy, the Company and its advisers have not independently verified all material contained herein.

Not an offer. This presentation is not an invitation, offer, solicitation or recommendation to buy or sell securities in any jurisdiction and must not be distributed where doing so would be unlawful. It is not a prospectus or offering document under Australian law and will not be lodged with ASIC.

Not financial product advice. Nothing in this presentation constitutes investment, legal, tax or other advice, and it does not consider the individual objectives, financial situation or needs of any person. Before making any investment decision, you should conduct your own investigation and seek professional advice.

Forward-looking statements. This presentation contains forward-looking statements that are subject to risk factors, many beyond the Company's control. Actual results may differ materially from those expressed or implied. The Company provides no assurance that actual results will meet expectations and does not undertake to update this information.

Exploration results, JORC Code and conceptual material. Exploration results referred to here have been previously released to ASX. Grades and resource figures attributed to third parties (for example Basil, Blackadder and Baldrick) are from prior public reporting by those parties and are not Litchfield estimates. Data and interpretation are kept separate throughout. The mineral systems framework, analogue comparisons and any reference to target scale are conceptual, are labelled as interpretation, and are not an Exploration Target or Mineral Resource under the JORC Code.

## Landholding Figures

Approximate landholding includes granted tenements and exploration licence applications. Certain applications are subject to competitive assessment and regulatory approval, and there is no assurance they will be granted. Total landholding may therefore change.



· 2026 BHP XPLOR COHORT ·

# SELECTED INTO THE 2026 **BHP** XPLOR COHORT

One of a small global cohort, backed by BHP to accelerate discovery on the Aileron–Irindina boundary.

IN THE COHORT



**LITCHFIELD**  
MINERALS LIMITED

**BHP**

# BIG MINDSET, NIMBLE MACHINE



## We think like a major

A whole belt assessed through a full mineral systems framework, from source to preservation.



## We control the ground

~10,000 km<sup>2</sup> consolidated in one corridor. Every tenement held for a stated geological reason.



## We run like a partner

Clean data, transparent governance and a technical model a major can rely on. Selected into BHP Xplor.



## We operate at a high standard

Understand, then drill. Capital moves only after the evidence and the decision gates say so.

**~10,000**

KM<sup>2</sup> AILERON/IRINDINA BELT

**99**

COPPER OCCURRENCES IN THE AOI

**US\$0.5M**

NON-DILUTIVE BHP XPLOR FUNDING

**FIELD FOCUS**

MINDSET ON IN-FIELD EXPENDITURE



# BUILT AND LED BY PEOPLE WHO UNDERSTAND MINING & EXPLORATION



**Dr Peter Eaglen**

NON-EXECUTIVE CHAIRMAN

---

40+ years across mining and metals, most recently leading Board assurance at Rio Tinto. Deep HSE, closure and M&A due-diligence experience.



**Prof. Mark Noppe**

NON-EXECUTIVE DIRECTOR

---

40+ years in geoscience and orebody knowledge, advising resource owners, investors and lenders on resource definition and reporting.



**Matthew Pustahya**

MANAGING DIRECTOR

---

Field-first explorer across the NT and Mount Isa, with end-to-end program delivery on time and budget. MBA (MGSM) for disciplined capital allocation.



**Matt McGloin**

SENIOR GEOLOGIST

---

15+ years across commodities and deposit styles. PhD in orogenic mineral systems; expertise in hydrothermal copper and magmatic nickel sulphides.

CAPITAL STRUCTURE

# TIGHTLY HELD AND WELL FUNDED

Indicative figures. Update to the current date before issue.

<b>ASX: LMS</b>	LISTING
<b>~\$13.7M</b>	MARKET CAPITALISATION
<b>~\$4.5M</b>	CASH ON HAND
<b>~65M</b>	SHARES ON ISSUE
<b>~21c</b>	SHARE PRICE
<b>~\$9.2M</b>	ENTERPRISE VALUE

## 12-MONTH SHARE PRICE



ASX: LMS · past 12 months, to 01 Jul · last ~21c - Disclaimer: Cash balance is unaudited as at 9.7.26. Share price reflects the closing market price from 8 July 2026.

### SHARE REGISTER

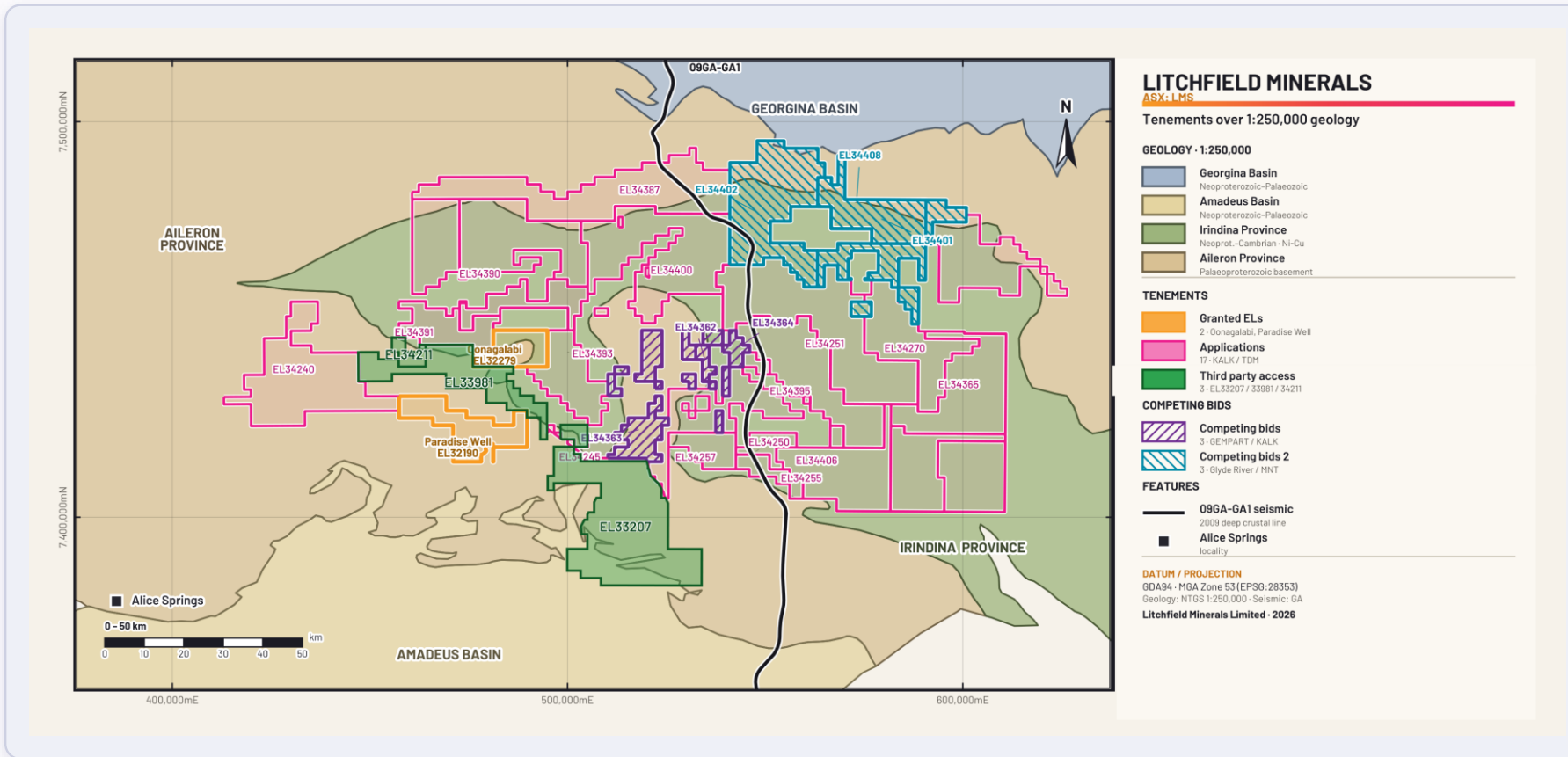
TOP 50 HOLD 63.3% · 65,291,058 SHARES

<b>11.7%</b>	<b>51.7%</b>	<b>36.6%</b>
Directors 7,645,088	Top 50 (ex-directors) 33,922,018	Other holders 23,973,952

LOCATION

# THE AILERON-IRINDINA BOUNDARY, NT

A single, contiguous corridor in the eastern Arunta of the Northern Territory, north-east of Alice Springs, straddling the boundary between the Aileron and Irindina provinces.



## Northern Territory

Eastern Arunta, north-east of Alice Springs

## Aileron-Irindina

Held across the province-boundary corridor

**+11,000 km<sup>2</sup>**

Granted ELs, applications and third-party access

## Deep seismic control

The 09GA-GA1 crustal line crosses the ground

# ANSWERING BHP'S MINERAL SYSTEMS QUESTIONS

The central question is whether the Aileron–Irindina Belt contains the geological ingredients required to host a BHP-scale copper or copper–nickel deposit. Applying the Mineral Systems approach, we have systematically set out to answer that question. The integrated datasets indicate the critical ingredients are present, spatially coincident, and demonstrably fertile.

## GRADE

### Magmatic Cu–Ni–PGE

Enriched SCLM on the near-primitive Lloyd Event and C2 trend. Fertility proven at Blackadder and Baldrick. The prize is grade; the target is a small conduit intrusion.

## TONNAGE

### Hydrothermal Cu

Copper leached from voluminous, depleted mafic by saline fluids on crustal-scale shears. Basil already proves the mechanism at district scale. The prize is tonnage.

## ASSESSED SOURCE TO PRESERVATION



01

### Source

What is the source of metals?



02

### Generation

What triggered the activity?



03

### Migration

Where did the fluids migrate?



04

### Concentration

How did they concentrate?



05

### Separation

How did minerals separate?



06

### Preservation

Where is it preserved now?



# THE SYSTEMS THAT PRODUCED COPPER, REPEATEDLY

Two great magmatic pulses (1800-1700 & 500-400Ma) bracket the corridor, and copper is a repeat offender. Thirty-one **dated** Cu and Ni-Cu occurrences show these systems generated metal more than once, in more than one style.



CU-NI OCCURRENCES BY AGE AND STYLE · 1900 TO 250 MA

Data Sources: Geoscience Australia, Northern Territory Geological Survey, RAGS, and internal Litchfield Minerals geological interpretations and analysis.

DEMONSTRATED FERTILITY

### Oonagalabi

**91 m @ 0.9% Cu**

OGRC010, LMS (ASX)

### Blackadder

**9.6% Cu · 3.8% Ni · 1.7 g/t PGE**

ROCK CHIP, LLOYD EVENT

### Basil

**26.5 Mt @ 0.57% Cu, 0.05% Co (Inferred Mineral Resource Resource)**

HYDROTHERMAL CU, INFERRED

### 1.8 Ga Cu

**Jervois - Reward · Bonya · Home of Bullion**

DISTRICT-SCALE, RECURRING

Oonagalabi: LMS, reported to ASX. Blackadder and Basil: prior public reporting (Mithril 2008, (Mithril 2008, 2012).

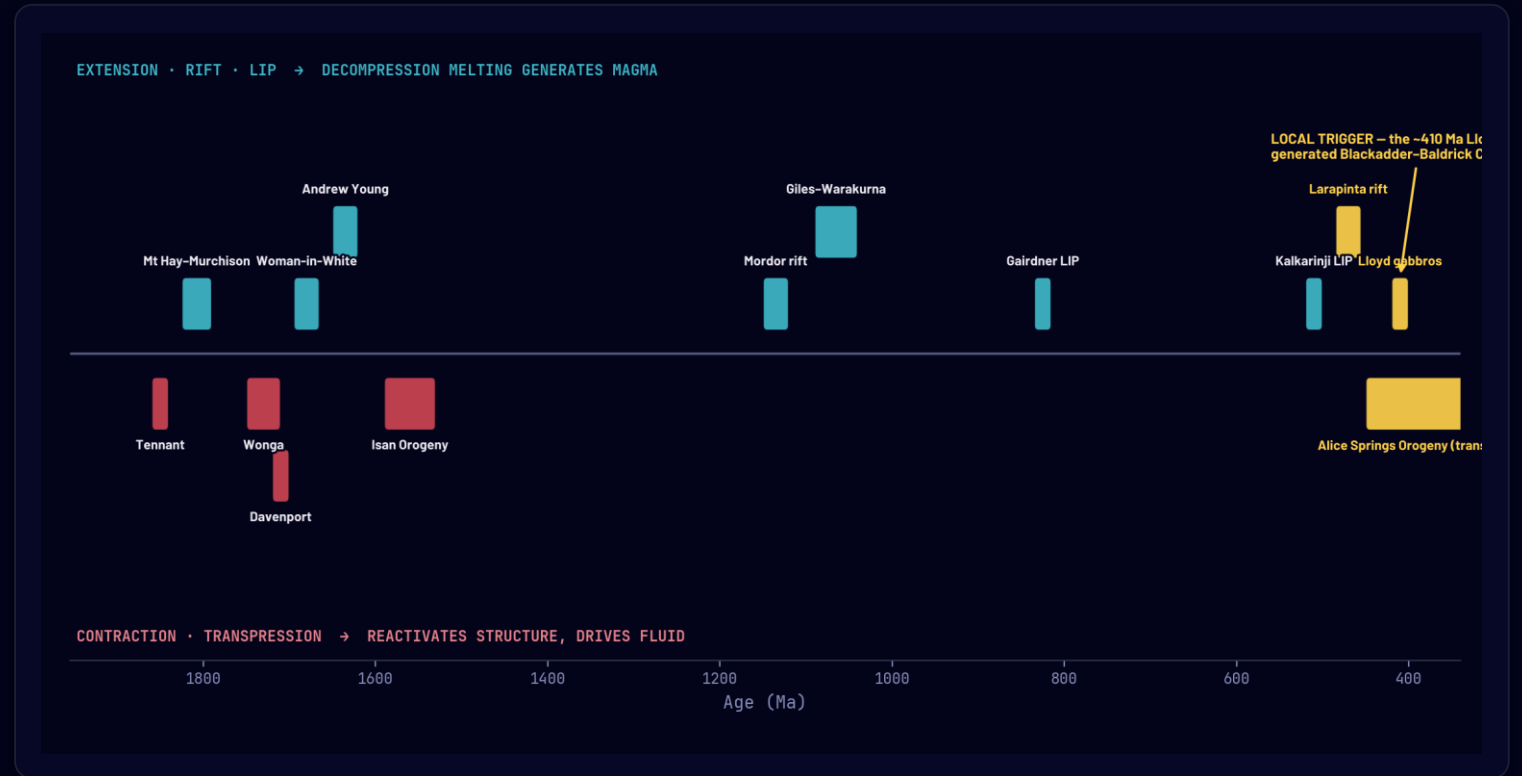
# THE TRIGGER: TECTONIC EXTENSION

## WHAT TRIGGERED THE MINERAL SYSTEMS

Long-lived deep structures were repeatedly reactivated under changing tectonic regimes, creating pathways for fertile magmas and mineralising fluids..

The corridor records repeated cycles of extension and contraction. Extensional events—including the Mount Hay, Gairdner, Giles–Warakurna and Kalkarinji magmatic episodes, together with the Lloyd Gabbros, introduced repeated pulses of mafic magmatism. Later contractional events, including the Alice Springs Orogeny, likely reactivated these long-lived structures, focusing fluid flow through the same deep architecture.

Locally, the ~410 Ma Lloyd extensional event emplaced the Lloyd Gabbros, providing a well-constrained tectonic setting for Cu–Ni magmatism.



TECTONIC EVENTS AND REGIMES · FROM THE LITCHFIELD TIME-SPACE COMPILATION · INTERPRETATION



## MIGRATION

# MANTLE-TAPPING STRUCTURE, IMAGED IN THE GRAVITY

### THE BIG QUESTION

What are the deepest structures controlling Central Australia?

Deep, mantle-tapping structures persist through every filtered depth slice across the AOI.

### N-S AND NNE GRAIN

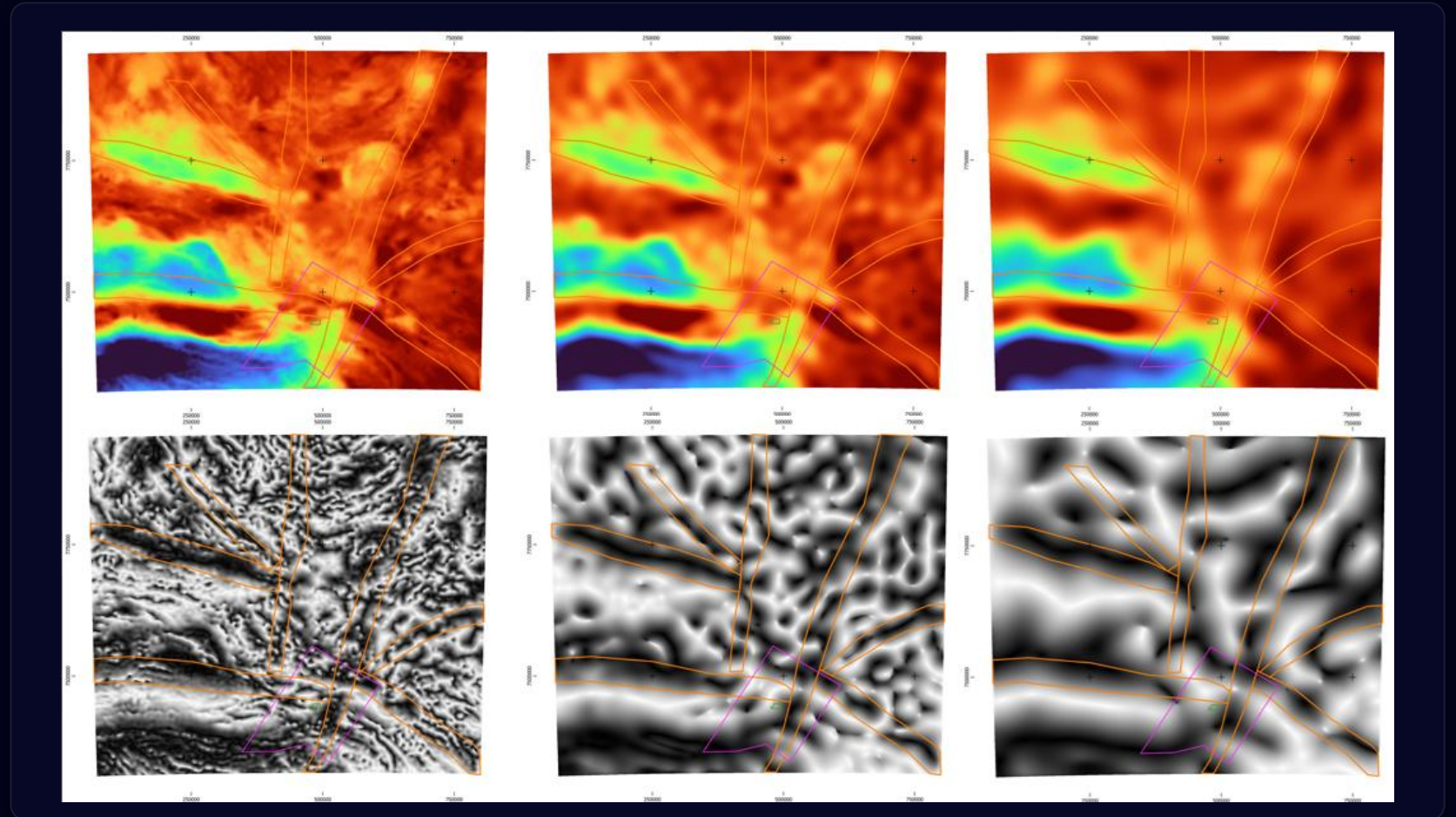
Strong N-S and NNE-trending anomalies split the western, better-known geology from the east, on a Tennant Creek to Alice Springs trend.

### HIDDEN ELSEWHERE

These deep trends are effectively invisible in the magnetics and mapped geology, so a magnetic-led search would miss them.

### WHY WE INVESTIGATED

Giant copper and copper-nickel systems are controlled by deep lithospheric architecture. Regional investigations have identified mantle-tapping structures capable of focusing magma, fluids and mineralisation.



PGN Geoscience (L. Ailleres) work completed for LMS · low-pass filtered Bouguer gravity. Interpretation of major structures (Orange polygons).



— CONCENTRATION/ SEPERATION

# LOCAL MANTLE-TAPPING PLUMBING, IMAGED AT DEPTH

## GRAVITY

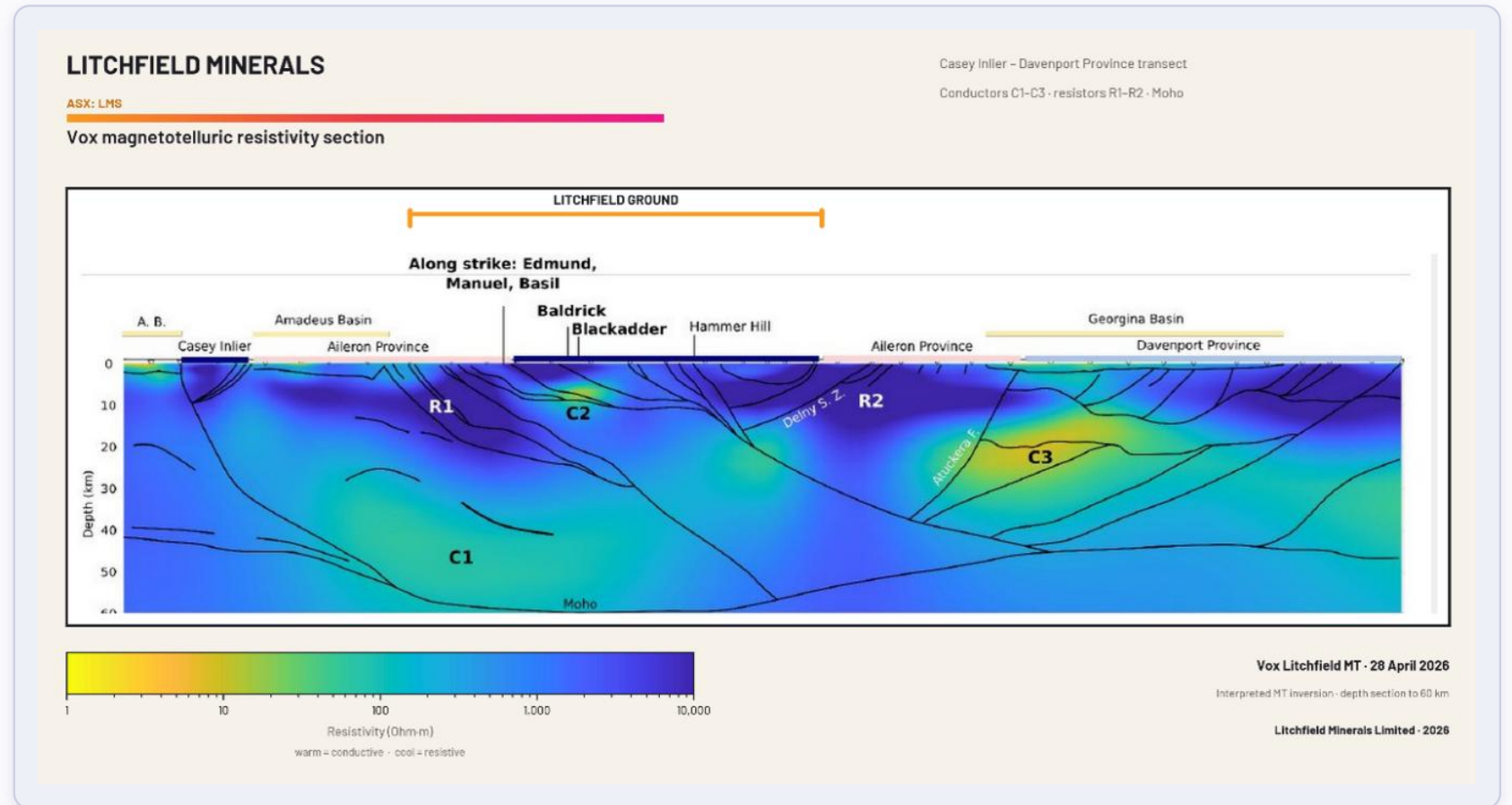
Deep gravity images N-S to NNE mantle-tapping corridors, largely invisible in the magnetics and mapped geology.

## MAGNETOTELLURICS

The Vox MT section resolves resistors R1-R2 (fertile crust) and conductors C1-C3. C2 sits beneath the Baldrick-Blackadder Cu-Ni-PGE prospects, **interpreted as mantle-derived sulphides.**

## THE DISCRIMINATOR

Mantle-related mineralisation tracks the MT conductive boundaries; other styles do not. The architecture appears to track a mantle-sourced system specifically.



Interpretation. MT inversion by Vox Geophysics; non-unique and kept separate from measured data.

# HIGH GRADE METAMORPHISM CAN PRESERVE, AND UPGRADE, ORE

The obvious objection to this belt is its high metamorphic grade. The global record answers it: some of the largest metal accumulations on Earth sit in amphibolite-granulite terranes, where metamorphism formed or upgraded the ore. [Conceptual comparison]



LARGE DEPOSITS BY HOST METAMORPHIC GRADE AND SIGNIFICANCE

## SAME CLASS OF GROUND

### Broken Hill type is already here

The Arunta hosts Broken Hill type mineralisation; Oonagalabi and Jervis carry BHT affinity.

### Magmatic play analogues

Nova-Bollinger, Voisey's Bay and Savannah sit in the same high-grade crust as the Lloyd Event.

### Hydrothermal play analogues

Basil is the same class as Renco and Tropicana: ore made or upgraded on the retrograde path.

FLAGSHIP · DRILL-READY

# OONAGALABI

A folded, sulphide-bearing copper system on major crustal architecture, expanding with every dataset.

Cu-Zn-Ag-Au



# DOMAIN GEOLOGY AND STRUCTURAL SETTING

## POSITION

In the Oonagalabi Domain of the Strangways Metamorphic Complex, less than 1 km from the Irindina–Aileron province boundary.

## HOST

A volcano-sedimentary package of quartzo-feldspathic sediments ( $1764.8 \pm 4.2$  Ma) with rare carbonates, intruded by a prolific dolerite swarm.

## METAMORPHISM

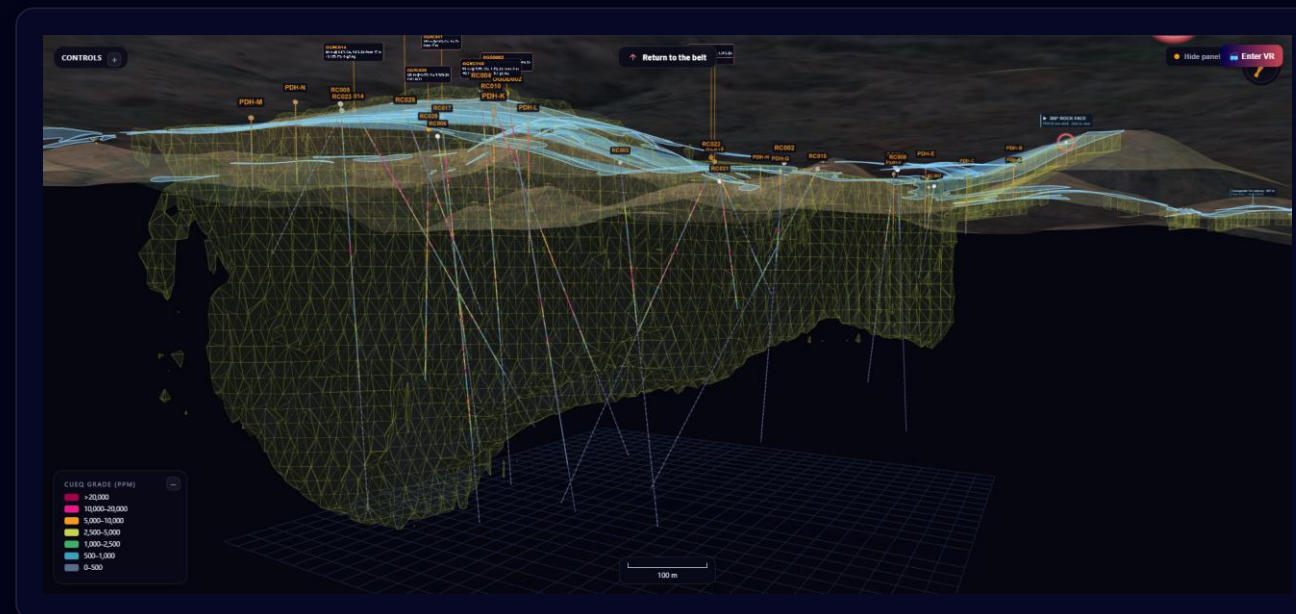
Upper amphibolite to lower granulite facies (SMC, ~1730 Ma), producing layered gneiss and amphibolite.

## STRUCTURE

A structurally complex system dominated by the north-east trending Oonagalabi Anticline.

## MINERALISATION

Stratabound, disseminated sulphide-type copper-zinc mineralisation with silver and gold.



OONAGALABI LIVE 3D MODEL · COLOURED BY CUEQ GRADE · LITCHFIELDMINERALS.COM.AU

## JORC CODE NOTICE

An interpretive visualisation of drill data only. It is not a Mineral Resource or Exploration Target, and implies no estimate of tonnage, grade, continuity or economics. Any prospective areas are conceptual. Insufficient exploration to define a Mineral Resource.

Grade values are reported as copper equivalent (CuEq) in parts per million (ppm). CuEq combines the contained metals into a single copper-equivalent grade to aid visualisation and comparison across the body. CuEq has been calculated as  $\text{CuEq (ppm)} = \text{Cu} + 0.217 \text{ Zn} + 0.132 \text{ Pb} + 131 \text{ Ag}$ , where each metal grade is in ppm. Metal prices used (LME/spot, 12 June 2026): Cu US\$12,800/t, Zn US\$3,200/t, Pb US\$1,945/t and Ag US\$67.50/oz. Assumed metallurgical recoveries: copper 92.2% and silver 71.3% (benchmarked to the Jervois Copper Project Feasibility Study, KGL Resources, November 2022), with zinc and lead assumed at 80%. Cobalt and gold are excluded. It is Litchfield's view that all elements included in the CuEq calculation have a reasonable potential to be recovered and sold; however, no metallurgical test work has been completed to confirm recoveries. CuEq values are interpretive and provided for visualisation purposes only, are not a Mineral Resource estimate, and should not be construed as an estimate of grade, continuity or economic potential.



# SYSTEMATIC EXPLORATION SINCE NOVEMBER 2024



## Surface geochemistry

203 soil · 28 rock chip samples



## Drone magnetics

613-line km



## Gravity, Bomb Diggity

231 stations



## Pole-dipole IP

36.2-line km across key prospects



## Airborne EM & mag

1,044-line km tenement-wide



## Ground EM & DHEM

across VT1 and VT2 targets



## Sentinel & hyperspectral

tenement-wide coverage



## Drilling

28 RC holes ~6,500 m · 3 diamond ~1,200 m



# THICK COPPER INTERCEPTS, OPEN IN MULTIPLE DIRECTIONS



COLLARS WITHIN THE OONAGALABI FORMATION OUTCROP · GDA94 MGA ZONE 53

Litchfield has completed 20 drill holes along approximately 900 metres of the prospective formation and its margins. Drilling has consistently intersected broad copper-zinc mineralisation, with the system remaining open along strike and at depth.

The next phase of exploration is focused on identifying the higher-grade core of the Oonagalabi mineral system. Additional geophysical surveys will be undertaken to refine the geological model and better target areas with the greatest potential for higher-grade mineralisation.

**~1.5 km+** strike

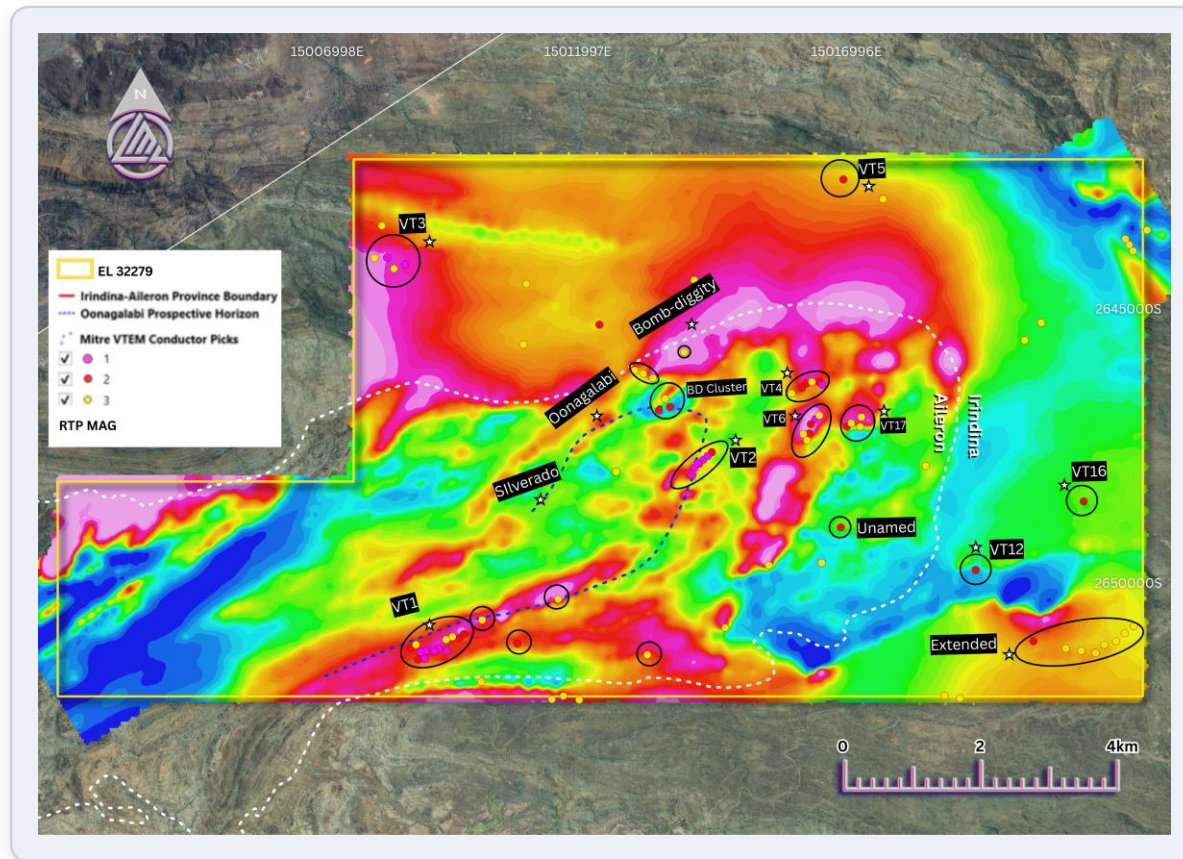
HEADLINE INTERCEPTS

<b>OGR017</b>	<b>161m @ 0.5% Cu, 1.0% Zn</b>	<b>OGR004</b>	<b>63m @ 0.45% Cu, 0.4% Zn</b>
<b>OGR010</b>	<b>91m @ 0.9% Cu, 1.3% Zn</b>	<b>OGR003</b>	<b>53m @ 0.55% Cu, 0.44% Zn</b>
<b>OGR016</b>	<b>91m @ 0.6% Cu, 1.0% Zn</b>	<b>OGR001</b>	<b>31m @ 0.32% Cu, 1.0% Zn</b>
<b>OGR014</b>	<b>90m @ 0.6% Cu, 1.8% Zn</b>	<b>OGR006</b>	<b>35m @ 0.24% Cu, 0.77% Zn</b>

## OONAGALABI · GEOPHYSICS

# THE DEPOSIT MODEL IS EVOLVING

Oonagalabi was historically viewed as a simple carbonate-hosted stratiform system. New drilling and geophysics maybe pointing to something bigger, focused along the Aileron-Irindina province boundary.



## BEYOND THE CARBONATES

New drilling and geophysics show mineralisation is not restricted to the carbonate units and multiple styles of mineralisation exist.

## FEEDER-STYLE CONDUCTORS

VTEM priority conductors may represent feeder structures, or point to a larger, more complex mineralising system.

## ADDED COMPLEXITY

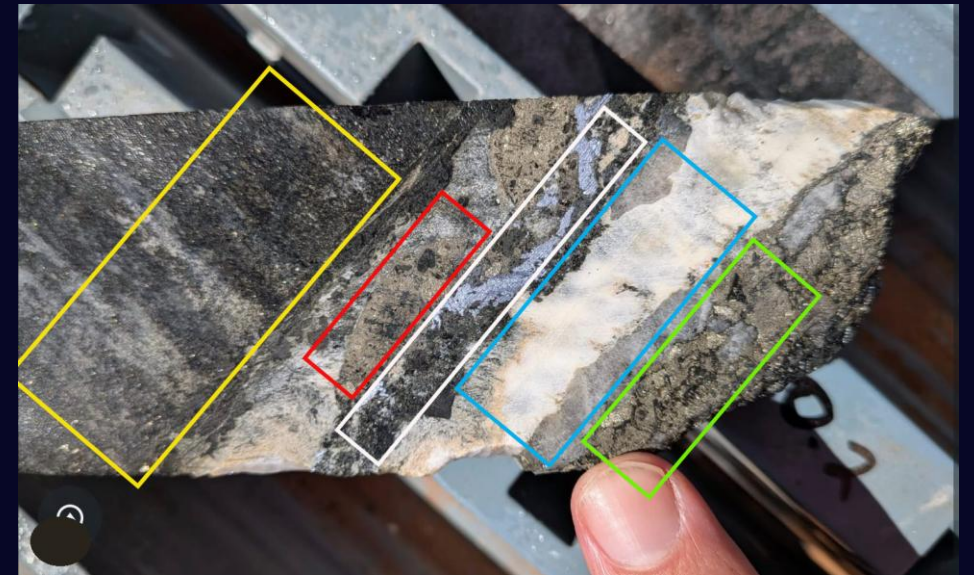
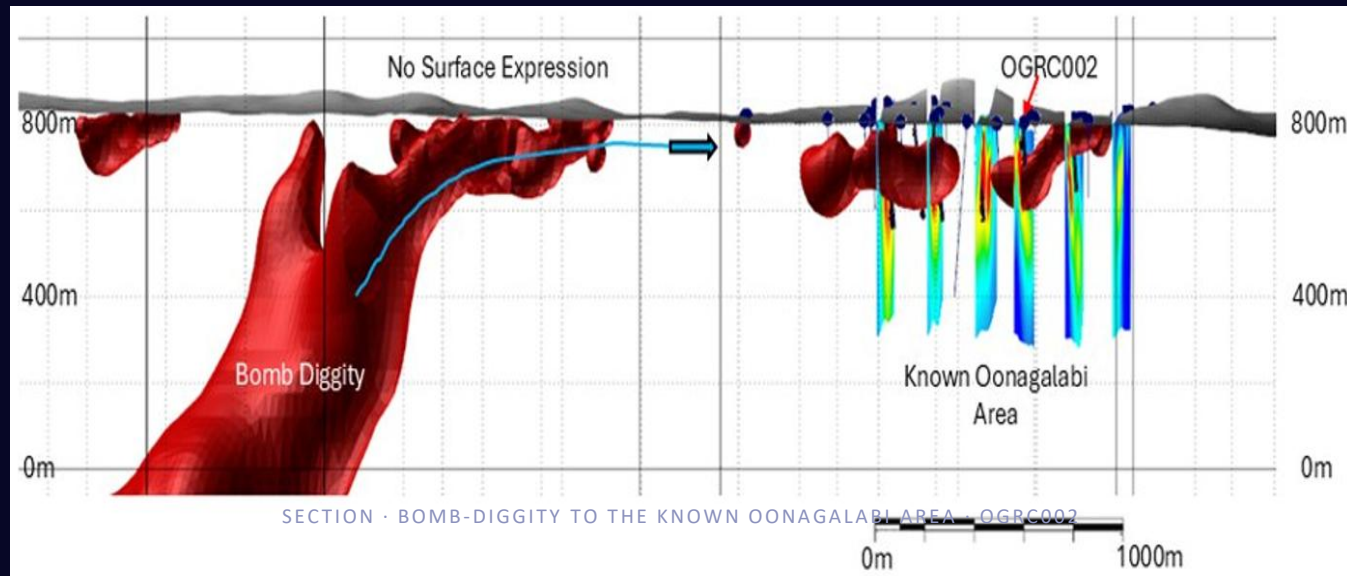
Magnetite-Au-Bi mineralisation (OGRC002) suggests additional system complexity beyond the original model.

## FOCUSED ON THE BOUNDARY

Vertically extensive magnetic anomalies focus along the Aileron-Irindina boundary. Oonagalabi now reads as part of a broader mineral system.

# FURTHER EVIDENCE OF MULTIPLE PULSES

Intercept around 600 m from the Bomb-Diggity magnetic anomaly. Small, but a single interval potentially carries several mineralising events, direct support for the multiple-pulse model.



LOGGED CORE · MINERAL ID VISUAL/INTERPRETIVE, ASSAYS PENDING

## BOMB-DIGGITY

Large 1km + magnetic anomaly, 900m from the Oonagalabi area.

## SMALL, BUT MULTI-PHASE

Quartz vein, Ni-sulphide, iron sulphides and molybdenite in one interval.

## THE MAG WAS MISSED

The magnetic zones within the target were not tested. Bomb-Diggity stays open.

- Quartz vein
- Ni-sulphide
- Foliated gneiss
- Iron sulphides
- Molybdenite

Litchfield Minerals Ltd. (2026). Oonagalabi Drilling Strengthens Geological & Targeting Model. ASX Announcement, released 3 June 2026. Available at: <https://litchfieldminerals.com.au/announcements/7583564>



# NEW DATA, NEW DISCOVERIES



## Induced polarisation expanded the system

Mapped the Oonagalabi horizon more than 1 km across the Main Zone, with potential extensions north and south toward VT1 and VT2.



## Magnetics revealed the architecture

Highlighted deep-seated structures and intrusive domains, revealing a more extensive and structurally complex system than previously recognised.



## VTEM unlocked blind mineralisation

Identified previously unrecognised conductors and blind sulphide mineralisation on the Irindina and Aileron, beyond the known horizon.



## Drilling found new styles

A gold-bismuth overprint associated with magnetite in OGRC002 supports a multi-phase mineralising system.

# WHAT'S NEXT ACROSS THE CORRIDOR

01



## MT & gravity survey

Combined survey underway with Planetary Geophysics, ~40–50 days, targeting a conductivity anomaly at ~2.5 km depth near Oonagalabi, to find further C2-style conductors.

02



## Full 3D interpretation

Integrating MT, seismic, gravity and structure into a district-scale framework that maps traps and repeat structures.

03



## System-scale targets

Ranking high-confidence, deeper targets and resolving the Lloyd Gabbro geometry, the fork for the best Cu–Ni play.

04



## Drill the architecture

Testing the deeper, concealed sulphide system and converting discovery into a maiden resource.

# WHY LITCHFIELD, WHY NOW



## Copper leverage

Direct exposure to copper and the metals of electrification, in a proven Cu-Zn corridor that keeps expanding.



## Scale, not a single hole

A district-scale mineral system with two independent copper plays and a concealed system at depth.



## De-risked by understanding

Source to preservation mapped as one system. MT, gravity and structure integrated before drilling.



## Partner-ready

BHP Xplor participation - Building the systems, data and governance standards expected by a major.



## Clear catalysts

A deep geophysics survey underway and drill targets lined up to test the deeper architecture.



## The right team

Field-first geologists and experienced directors, aligned and disciplined on capital.

# COMPETENT PERSON STATEMENT AND REFERENCES

## COMPETENT PERSON STATEMENT — EXPLORATION RESULTS

The information in this announcement that relates to Exploration Results is based on, and fairly represents, information and supporting documentation compiled by Dr. Matthew McGloin (MGeol, PhD), a Competent Person who is a Member of the Australian Institute of Mining and Metallurgy (AusIMM) and a full-time employee of Litchfield Minerals Limited. Dr. McGloin has sufficient experience that is relevant to the style of mineralisation and types of deposits under consideration, and to the activity being undertaken, to qualify as a Competent Person as defined in the 2012 Edition of the Australasian Code for Reporting of Exploration Results, Mineral Resources and Ore Reserves (the JORC Code). Dr McGloin consents to the inclusion in this announcement of the matters based on this information in the form and context in which it appears. With regard to the Company's ASX Announcements referenced in the above Announcement, the Company is not aware of any new information or data that materially affects the information included in the Announcements.

## PREVIOUSLY REPORTED INFORMATION

Exploration results in this presentation were previously reported to the ASX by Litchfield Minerals Limited or by prior tenement holders. The Company confirms it is not aware of any new information or data that materially affects the information in the original market announcements, and that all material assumptions and technical parameters underpinning those results continue to apply and have not materially changed. All intercepts are reported as downhole widths; true widths are not yet determined. Announcements are available at [www.asx.com.au](http://www.asx.com.au) (ASX: LMS).

## FORWARD-LOOKING STATEMENTS

This presentation contains forward-looking statements regarding Litchfield's projects, plans and expectations. These reflect assumptions and judgements as at the date of the presentation and are subject to risks and uncertainties that may cause actual results to differ materially. Forward-looking statements are not guarantees of future performance and should not be unduly relied upon. The Company does not undertake to update them except as required by law.

## REFERENCES & DATA SOURCES

- Litchfield Minerals Limited ASX announcements (ASX: LMS)
  - 18/06/2026 - Harts Range-Defining a New Copper-Nickel Discovery District
  - 3/06/2026 - Oonagalabi Drilling Strengthens Geological & Targeting Model
  - 2/03/2026 - Oonagalabi IP Supports Expanding Mineral System
  - 5/02/2026 - Further Thick Copper-Zinc Mineralisation at Oonagalabi
  - 12/01/2026 - EM Defines 3000-Siemens Conductor & 1km Carbonate Unit - VT1
  - 10/12/2025 - 148m Copper intercept expands Oonagalabi Main Zone
  - 24/11/2025 - New IP Data Highlights Multiple High-Priority Targets
  - 17/11/2025 - 91m @ 0.9% Cu and 1.3% Zn Confirmed at Oonagalabi
  - 4/11/2025 - VT1 Shaping as a Very Strong Multi-Plate Conductor
  - 31/10/2025 - 200m Copper-Zinc Zone Demonstrates System Scale & Continuity
  - 28/10/2025 - DHEM confirms large conductive body at VT2
  - 23/10/2025 - Sulphides Hit at VT1, Conviction Builds at Oonagalabi
  - 17/10/2025 - Disseminated to massive sulphides intersected at Oonagalabi
- Structural interpretation — PGN Geoscience (L. Ailleres).
- Magnetotelluric survey and inversion — Vox Geophysics (K. Selway).
- Sm-Nd isotope work — Remote Area GeoScience, NTGS & GA databases.
- Prior Oonagalabi drilling and reporting — Mithril Resources Ltd and prior tenement holders.
- Regional geology and compilations — Northern Territory Geological Survey (NTGS).