

Bullabulling resource update on track as drilling extends mineralisation at depth

New results include 20m @ 3.4g/t Au from 93m and 18m @ 2.9 g/t Au from 332m

Minerals 260 Limited (ASX:MI6) is pleased to report results from the ongoing drilling program at its 100% owned 4.5Moz Bullabulling Gold Project, located 25km west of Coolgardie in Western Australia. Results have been received for a further 60 drill holes totalling 14,935m (**Figure 1**).

Results in this announcement are from drilling at the Phoenix, Bacchus and Dicksons deposits which will be incorporated into the upcoming Mineral Resource Estimate (MRE) update. Results continue to:

- confirm the continuity of mineralisation within the 4.5Moz MRE, as well as extensions beyond the resource boundaries;
- intersect thick and high-grade mineralisation within the footwall lodes at the Phoenix and Bacchus deposits;
- support the upgrade of Inferred Resources to Indicated;
- enhance the Company's understanding of the structural controls on mineralisation, including the potential identification of higher-grade trends both within and beyond the MRE;
- increase geological confidence of MRE update; and
- identify opportunities for resource growth.

Since release of the 4.5Moz MRE, MI6 has completed 78,000m of drilling across the Bullabulling Gold Project, which will be incorporated in the MRE update due for release in August 2026.

Ten drill rigs are on site, comprising four Reverse Circulation (RC), four Diamond Drilling (DD), one Aircore (AC) and one Water Bore (WB).

Highlights

Better results include:

Phoenix Deposit (57Mt @ 1.0g/t Au for 1,800koz Au)

Infill

- **3.9m @ 3.8g/t Au from 283m in BBRD0644*¹**
- **2m @ 8.9g/t Au from 250m in BBRD0645*¹**
- **3m @ 3.5g/t Au from 205m in BBRC0649***
- **12m @ 1.0g/t Au from 197m in BBRC0668***
- **20m @ 3.4g/t Au from 93m in BBRC0680***
- **3m @ 5.6g/t Au from 265m & 11m @ 2.4g/t Au from 327m in BBRC0683***

Extensional

- 5m @ 2.2g/t Au from 422m in BBRC0635*
- 13m @ 0.9g/t Au from 322m in BBRC0692*

Bacchus Deposit (46Mt @ 1.1g/t Au for 1,600koz Au)

Infill

- 5.5m @ 4.3g/t Au from 349.6m in BBRD0664*¹
- 2m @ 7.4g/t Au from 256m in BBRD0667*¹
- 14m @ 2.4g/t Au from 186m in BBRC0694[#]
- 15m @ 2.3g/t Au from 204m in BBRC0700*

Extensional

- 10m @ 3.1g/t Au from 470m in BBRC0631*

Dicksons Deposit (18Mt @ 1.0g/t Au for 610koz Au)

Extensional

- 18m @ 2.9g/t Au from 332m in BBRD0603*¹, including:
 - 1m @ 38.4g/t Au from 347m
- 4m @ 10.0g/t Au from 111m in BBRC0666*, including:
 - 1m @ 38.9g/t Au from 111m

- * True widths are estimated at between 85% and 95% of the reported drillhole intercepts
- # True widths are estimated at between 70% and 85% of the reported drillhole intercepts
- ¹ Diamond tail results reported only. See previous ASX announcements for RC pre-collar significant intercepts

Management Comment

Minerals 260 Managing Director, Luke McFadyen, said: "Following the December 2025 MRE, we have completed 78,000m of drilling across the Phoenix, Bacchus, Dicksons, Kraken and Gibraltar Deposits that will be incorporated in the MRE update in August. These results demonstrate the continuity, scale and quality of mineralisation across Bullabulling. The scale of this program has significantly increased confidence in the existing Resource, enhanced our understanding of the structural controls on mineralisation and identified opportunities to test potential higher-grade trends both within and beyond the MRE".

Details

Minerals 260 Limited ("Minerals 260" or the "Company") (**ASX: MI6**) is pleased to report further results from its 100%-owned, 4.5Moz Bullabulling Gold Project ("Bullabulling" or the "Project") located 25km west of Coolgardie in Western Australia.

Assays have been received for 60 drill holes totalling 14,935m with better results shown in **Figure 1**. Drilling comprised 29 holes for 6,078m (~40%) focused on supporting the conversion of Inferred to Indicated resource classification, together with 31 holes for 8,857m (~60%) targeting extensions to the MRE.

785 holes for 172,610m have been drilled by Minerals 260 since acquiring the Project in April 2025, comprising 72 DD holes for 13,118m, 665 RC holes for 142,438m, and 48 RC/DD holes for 17,054m.

See **Appendix 1** for a summary of the results included in this Announcement.

Results in this Announcement are from:

- Infill drilling at the Phoenix and Bacchus deposits, supporting the upgrade of Inferred Resources to the Indicated, and facilitate Resource-to-Reserve conversion.
- Extensional drilling at Dicksons, Phoenix, and Bacchus, targeting the continuity and down-dip extensions of mineralisation at depth, including high-grade mineralisation associated with footwall shear zones.

The PFS, including the declaration of a Maiden Ore Reserve, remains on track for release in July 2026 and will be based on the 4.5Moz Mineral Resource Estimate announced in December 2025.

Results from drilling since December 2025 will support an updated MRE planned for August 2026, which will be incorporated into the Definitive Feasibility Study and a Reserve update, targeted for release in early-CY2027.

Phoenix (57Mt @ 1.0g/t Au for 1,800koz Au)

Drilling at Phoenix focussed on infill and depth extensions along the western margins of the MRE. Depth extension drilling has returned thick and high-grade mineralisation within the footwall lodes, including BBRC0601, which intersected 18m @ 2.9g/t Au from 332m outside of the MRE pit shell (**Figure 2**). Infill drilling intersected 20m @ 3.4g/t Au from 93m in BBRC0680 beneath the Phoenix existing pit in a high-grade lode (**Figure 3**).

These results continue to demonstrate the continuity and predictability of mineralisation at depth and, together with previously reported drilling results, support resource growth in the MRE along the western margin of the deposit, while also supporting the upgrade of Inferred Resources to Indicated for potential Reserve growth.

Bacchus (46Mt @ 1.1g/t Au for 1,600koz Au)

Drilling at Bacchus focused on infill and depth extensions along the western margin of the deposit, where mineralisation remains open at depth. Results continue to return thick, high-grade gold intercepts across multiple lodes and confirm the continuity of mineralisation at depth along the footwall shear zone, which hosts consistently high-grade mineralisation.

Wide-spaced extension drilling west of the MRE intersected 10m @ 3.1g/t Au from 470m in BBRC0631 along the footwall shear zone outside of the MRE pit shell, demonstrating the continuity of mineralisation well beyond the MRE. Together with previously reported drilling results, this supports growth of the Mineral Resource along the western margin of the deposit (**Figure 4**).

Dicksons Deposit (18Mt @ 1.0g/t Au for 610koz Au)

Drilling at Dicksons focused on resource extensions up and down dip, outside of the MRE. BBRC0600 returned high-grade mineralisation, including 4m @ 10.0g/t Au from 111m, east of the resource and confirmed the continuity of mineralisation beyond the MRE (**Figure 5**). These results, together with previously reported drilling, support Mineral Resource growth at Dicksons and further highlight the potential of the Dicksons East and North targets for future resource growth.

This announcement has been authorised for release by the Board of Minerals 260 Limited.

For further information please contact:

Luke McFadyen

Managing Director

T: +61 8 6556 6020

info@minerals260.com.au

Investor Relations:

Nicholas Read

Read Corporate

T: +61 8 9388 1474

nicholas@readcorporate.com.au

Bullabulling Gold Project Overview

Bullabulling Gold Project is a potential open pit mining operation located 25km south-west of Coolgardie in the Eastern Goldfields region of Western Australia. The Project hosts a JORC 2012 Mineral Resource Estimate of 130Mt @ 1.0g/t Au for 4.5Moz of gold, on granted mining leases (M15/503, M15/1414, M15/282, M15/554 and M15/552) and is located within a ~1,160km² tenement package (**Table 1 and 2 and Figure 6**).

Table 1 - Bullabulling Mineral Resource Estimate as of December 2025 by deposit

Deposit	Indicated			Inferred			Total Resource		
	Tonnes (Mt)	Grade Au (g/t)	Metal Au (koz)	Tonnes (Mt)	Grade Au (g/t)	Metal Au (koz)	Tonnes (Mt)	Grade Au (g/t)	Metal Au (koz)
Dicksons	12	1.0	390	6.5	1.0	220	18	1.0	610
Phoenix	45	0.98	1,400	12	1.1	400	57	1.0	1,800
Bacchus	32	1.0	1,100	14	1.2	530	46	1.1	1,600
Kraken	2.9	1.2	120	5.9	1.2	220	8.8	1.2	340
Gibraltar	1.7	0.85	47	3.7	1.1	130	5.4	1.0	180
Total	93	1.0	3,000	42	1.1	1,500	130	1.0	4,500

Table 2 - Bullabulling Mineral Resource Estimate as of December 2025 by domain

Domain	Indicated			Inferred			Total Resource		
	Tonnes (Mt)	Grade Au (g/t)	Metal Au (koz)	Tonnes (Mt)	Grade Au (g/t)	Metal Au (koz)	Tonnes (Mt)	Grade Au (g/t)	Metal Au (koz)
Oxide	3.1	0.95	96	1.5	0.93	44	4.6	0.94	140
Transitional	23	0.99	720	3.2	1.1	110	26	1.0	830
Fresh	67	1.0	2,200	37	1.1	1,300	104	1.1	3,600
Total	93	1.0	3,000	42	1.1	1,500	130	1.0	4,500

Notes for Table 1 and Table 2:

1. Mineral Resources reported above a cut-off grade of 0.4 g/t Au inside a A\$4,500 pit shell.
2. Numerical differences occur due to rounding to two significant figures to reflect the relative uncertainty of a mineral resource estimate.
3. Effective reporting date 1st December 2025.

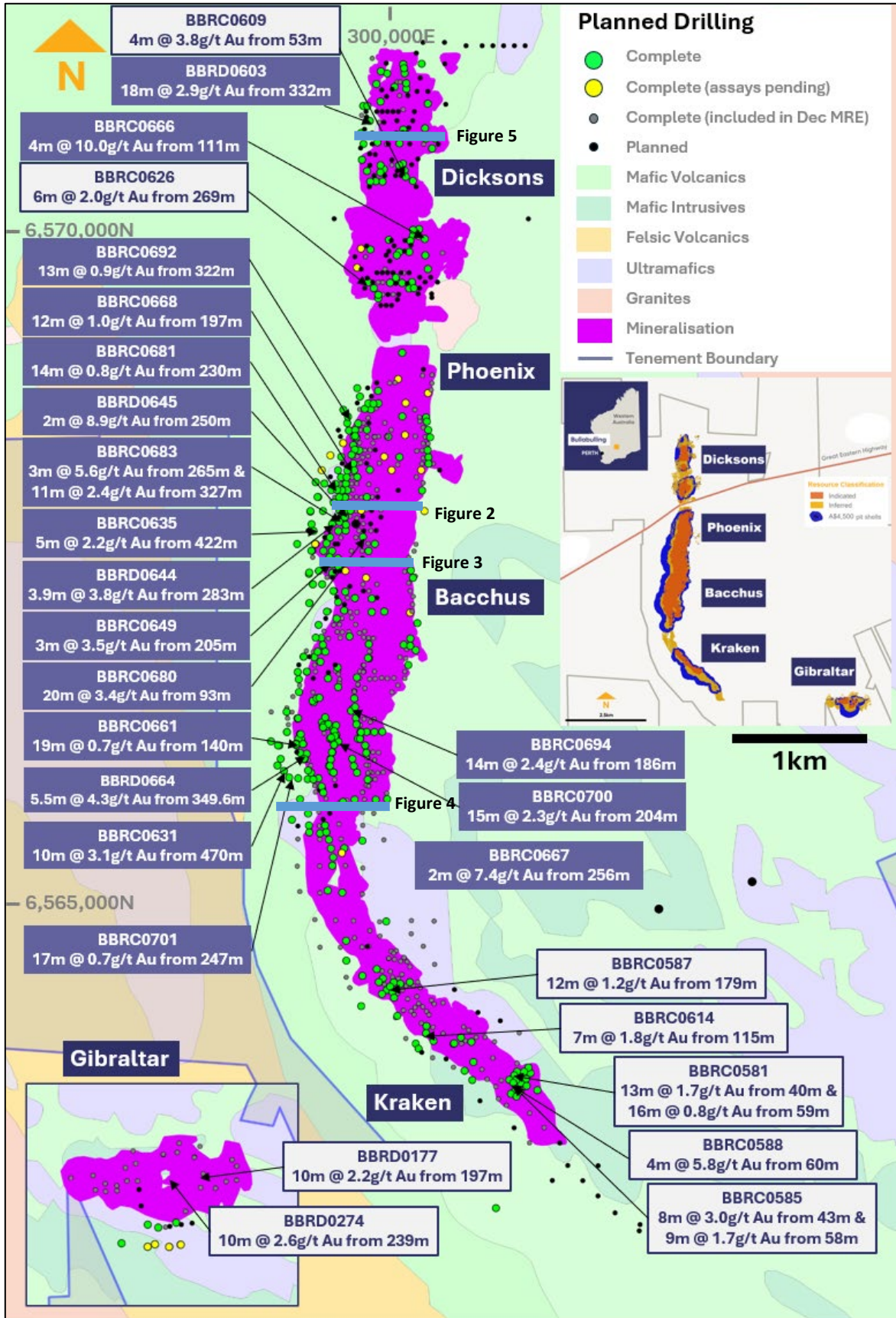


Figure 1 - Completed drilling collar locations with highlighted results (new results in purple boxes)

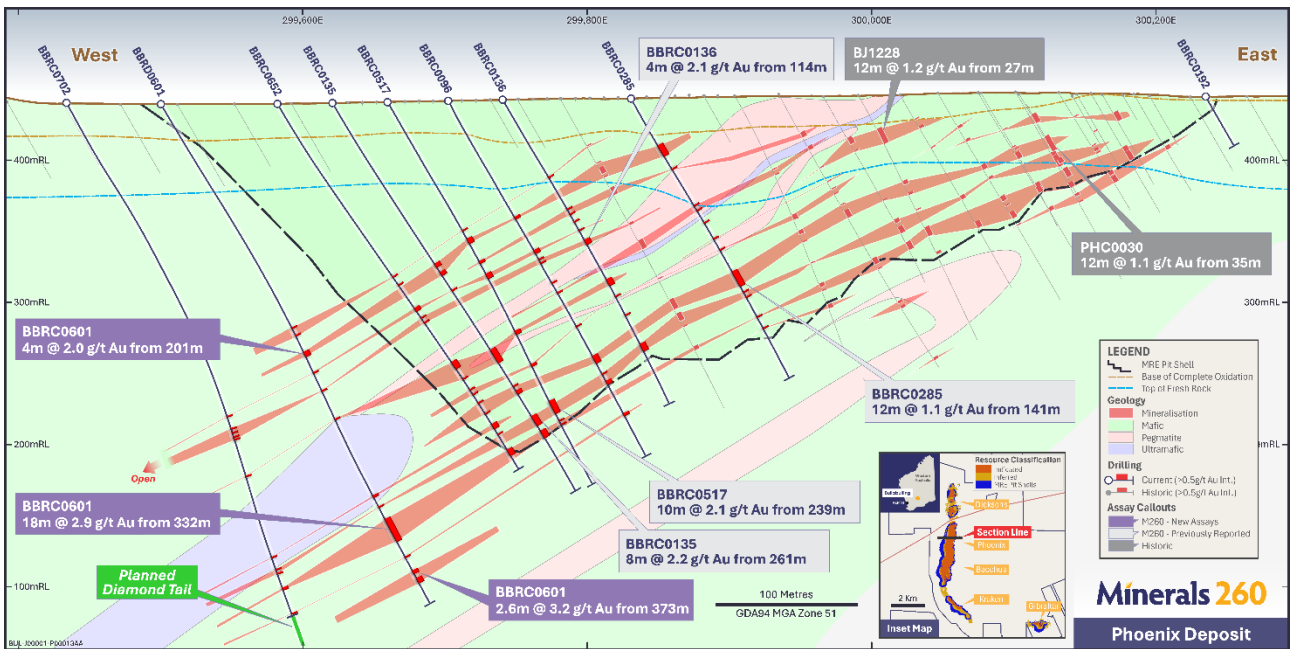


Figure 2 - Section 6568130N in Phoenix showing mineralisation in BBRC0601 extending from the MRE pit shell along the footwall shear zone (new results in purple boxes)

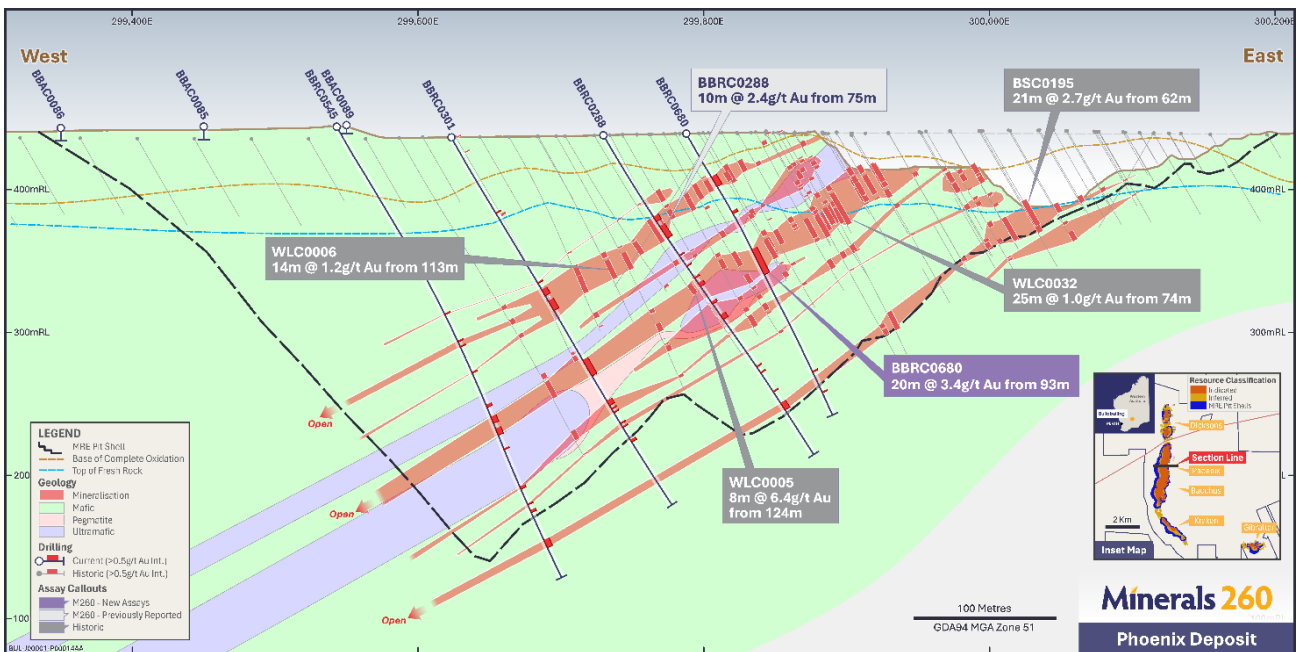


Figure 3 - Section 6567730N showing mineralisation in BBRC0680 infilling the Phoenix MRE pit shell (new results in purple boxes)

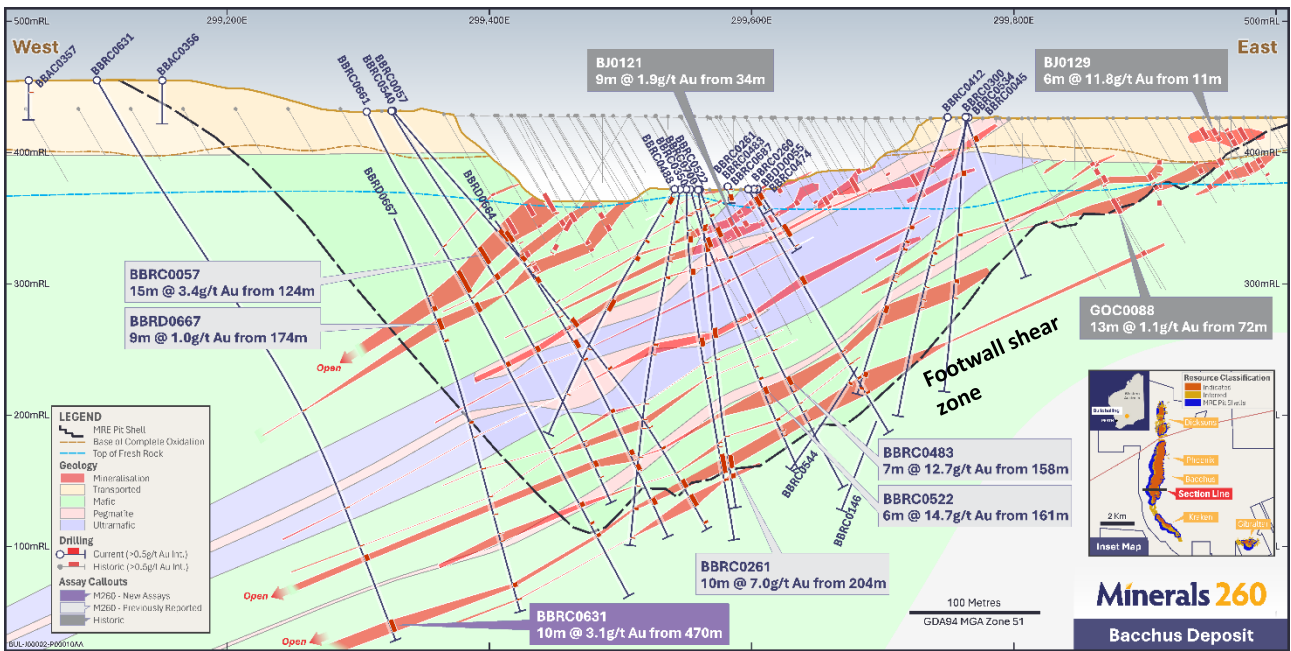


Figure 4 - Section 6566220N showing high-grade mineralisation at Bacchus in drill hole BBRC0631 extending the resource down dip of the MRE pit shell (new results in purple boxes)

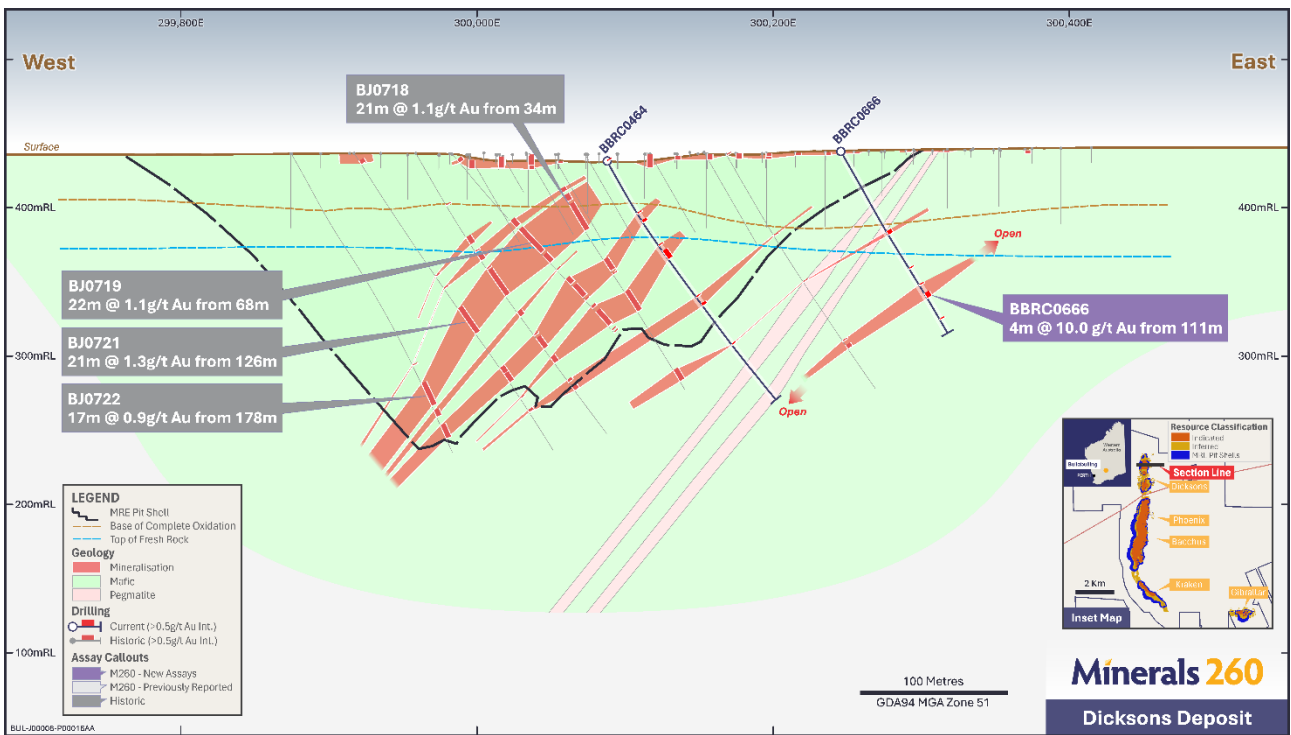


Figure 5 - Section 6570780N showing high-grade mineralisation at Dicksons in drill holes BBRC0666 beneath the MRE pit shell (new results in purple boxes)

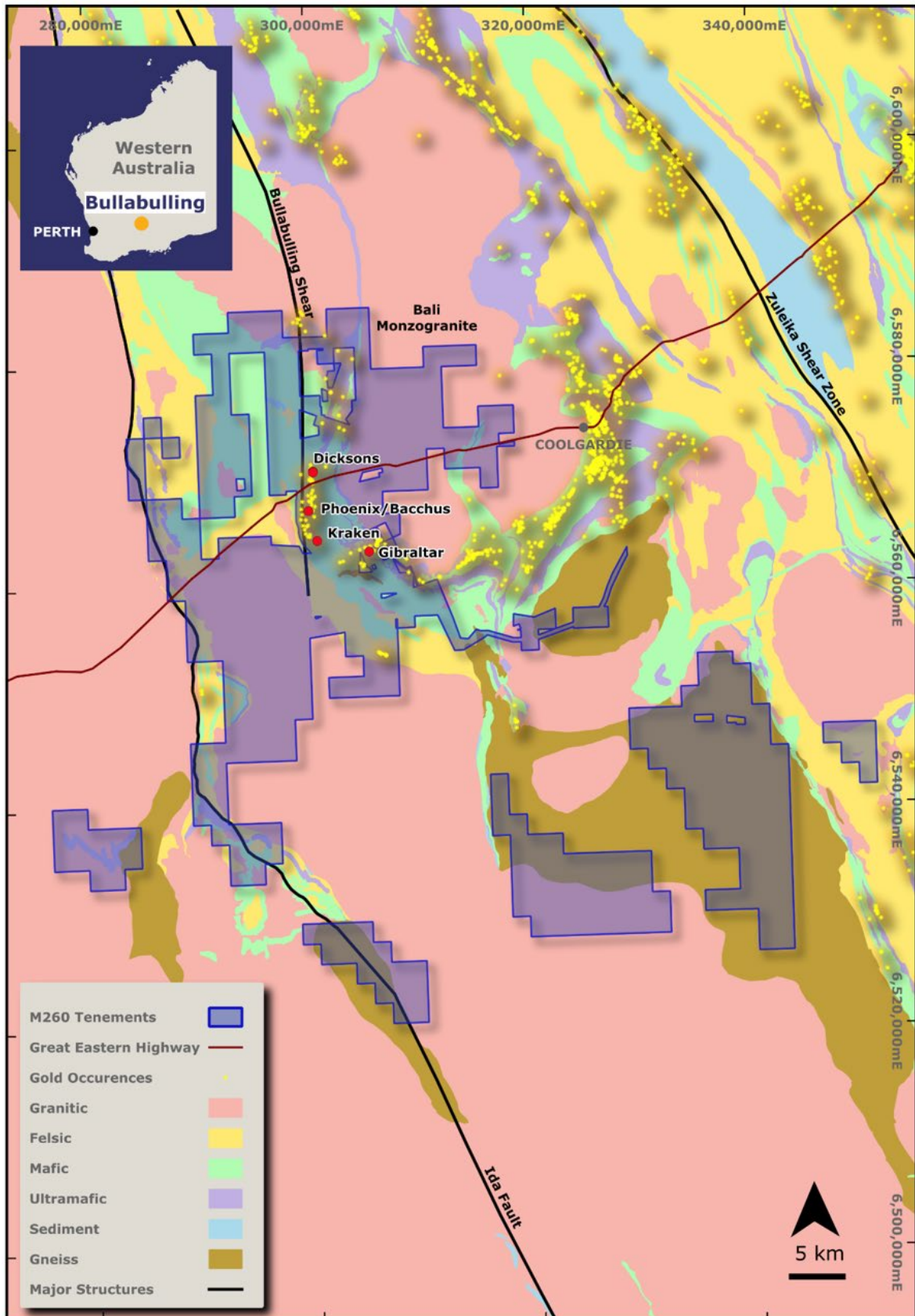


Figure 6 – Bullabulling Gold Project tenements and geology

Competent Person Statement

The information in this announcement that relates to Exploration Results for the Bullabulling Gold Project is based on, and fairly represents, information and data compiled by Mr Matthew Blake, who is a Competent Person and a member of the Australasian Institute of Geoscientists (AIG). Mr Blake is a full-time employee of the Minerals 260, is entitled to participate in the Company's Employee Securities Incentive Plan, and his associates hold securities in Minerals 260. Mr Blake has sufficient experience that is relevant to the style of mineralisation and type of deposit under consideration and to the activities being undertaken to qualify as a Competent Person as defined in the 2012 Edition of the 'Australasian Code for Reporting of Exploration Results, Mineral Resources and Ore Reserves'. Mr Blake consents to the inclusion in this announcement of the information and data relating to the Bullabulling Gold Project based on his information in the form and context in which it appears.

The information in this announcement that relates to the Mineral Resource Estimate for the Bullabulling Gold Project is extracted from the Minerals 260 Limited ASX announcement titled "Bullabulling Gold Project Mineral Resource Doubles to 4.5Moz" dated 1 December 2025.

The information in this announcement that relates to prior Exploration Results and Historical Exploration Results for the Bullabulling Gold Project is extracted from the following ASX announcements:

- "Bullabulling Gold Project Exploration Strategy" dated 12 May 2025
- "Bullabulling Gold Project Drilling Results" dated 4 June 2025
- "Bullabulling Gold Project Drilling Update" dated 7 July 2025
- "Gold discovered along strike and at depth at Bullabulling" dated 4 August 2025
- "High-Grade Intercepts Expand Bullabulling Drill Program" dated 9 September 2025
- "High-Grade Results to Support Bullabulling Resource Upgrade" dated 7 October 2025
- "Bullabulling Gold Project Mineral Resource Doubles to 4.5Moz" dated 1 December 2025
- "High-Grade Gold Continues to be Intersected at Bullabulling" dated 15 December 2025
- "Strong Results and Drilling Recommences at Bullabulling" dated 16 February 2026
- "Strong Drilling Results, Maiden Reserve and MRE on Track" dated 30 March 2026
- "Drilling Supports Bullabulling Resource Upgrade Potential" dated 4 May 2026
- "Bullabulling Drilling Continues to Support Resource Growth" dated 9 June 2026

These announcements are available at www.minerals260.com.au.

The Company confirms that it is not aware of any new information or data that materially affects the information included in the original announcements and that in the case of the Mineral Resource Estimate for the Bullabulling Gold Project, all material assumptions and technical parameters underpinning the estimates in the previous announcement continue to apply and have not materially changed. The Company confirms that the form and context in which the Competent Persons findings presented have not been materially modified from the original market announcements.

Forward Looking Statements

This announcement may contain forward-looking statements, guidance, forecasts, estimates, prospects, projections or statements in relation to future matters that may involve risks or uncertainties and may involve significant items of subjective judgement and assumptions of future events that may or may not eventuate (Forward Statements).

Forward Statements can generally be identified by the use of forward-looking words such as "anticipates", "estimates", "will", "should", "could", "going", "may", "expects", "plans", "forecast", "target" or similar expressions. Forward Statements including references to updating or upgrading mineral resource estimates, future or near-term production and the general prospectivity of the deposits at the Bullabulling Gold Project (Project), likelihood of permitting the Project and taking a financial investment decision, among other indications, guidance or outlook on future revenues, distributions or financial position and performance or return or growth in underlying investments are provided as a general guide only and should not be relied upon as an indication or guarantee of future performance.

In addition, these Forward Statements are based upon certain assumptions and other important factors that, if untrue, could materially affect the future results, performance or achievements expressed or implied by such information or statements. There can be no assurance that such information or statements will prove to be accurate.

Key assumptions upon which the Company's forward-looking information is based include, without limitation, assumptions regarding the exploration and development activities, receipt of timely approvals and permits, ability to obtain timely finance on reasonable terms when required in the future and contracting for development, construction and commissioning of any future mining operation on terms favourable to the Company, the current and future social, economic and political conditions and any other assumption generally associated with the mining industry. To the extent that certain statements contained in this announcement may constitute 'Forward Statements' or statements about forward looking matters, then the information reflects the Company's (and no other party's) intent, belief or expectations as at the date of this announcement. No independent third party has reviewed the reasonableness of any such statements or assumptions. None of the Company, its related bodies corporate and their respective officers, directors, employees, advisers, partners, affiliates and agents (together, the M16 Parties) represent or warrant that such Forward Statements will be achieved or will prove to be correct or gives any warranty, express or implied, as to the accuracy, completeness, likelihood of achievement or reasonableness of any Forward Statement contained in this announcement.

Forward Statements are not guarantees of future performance and involve known and unknown risk, uncertainties and other factors, many of which are beyond the control of the Company, and their respective officers, employees, agents and advisors, that may cause actual results to differ materially from those expressed or implied in such statements. Except as required by law or regulation, the Company assumes no obligation to release updates or revisions to Forward Statements to reflect any changes. Recipients should form their own views as to these matters and any assumptions on which any of the Forward Statements are based and not place reliance on such statements.

Appendix 1 – Bullabulling Project – RC and DD Drill Hole Statistics

Hole_ID	Hole Type	East	North	RL	Depth (m)	Dip	Azimuth	From (m)	To (m)	Significant Intercepts	
										Gold (>0.5g/t)	
										Interval (m)	Grade (g/t)
BBRD0270*	RC/DD	299291	6566180	432	402.6	-75	90	339	340	1	0.76
								359	362.1	3.08	0.82
								379	380	1	0.70
								392	392.5	0.5	1.34
								400	401	1	1.27
BBRD0498*	RC/DD	299436	6567680	442	457	-65	90	Assays Pending			
BBRD0531*	RC/DD	299592	6568083	439	348	-60	90	285.3	286.5	1.2	0.86
								290.7	295	4.3	0.73
BBRC0567	RC	300200	6570020	444	34	-67	90	No significant results			
BBRC0570	RC	299452	6566879	430	108	-60	90	No significant results			
BBRC0575	RC	300258	6568596	456	52	-63	90	No significant results			
BBRC0584	RC	300992	6563752	418	84	-60	45	No significant results			
BBRC0586	RC	300465	6563960	416	36	-67	45	No significant results			
BBRC0590	RC	300275	6568530	455	40	-60	90	No significant results			
BBRC0591	RC	300290	6568478	453	40	-60	90	No significant results			
BBRC0592	RC	300270	6568378	451	52	-60	90	No significant results			
BBRC0593	RC	300140	6567480	438	52	-60	90	No significant results			
BBRC0594	RC	299414	6565930	436	10	-60	90	No significant results			
BBRC0599	RC	300160	6567430	438	65	-85	90	No significant results			
BBRD0601*	RC/DD	299500	6568130	440	399.4	-60	90	313.2	315	1.8	0.94
								322	323	1	0.67
								332	350	18	2.89
								incl. 1m @ 38.4g/t Au from 347m			
								362	363	1	1.42
								373	375.6	2.6	3.15
BBRD0603*	RC/DD	299840	6570830	435	348	-75	90	118	119	1	0.9
								254	255	1	0.78
								268	281	13	0.69
								287	288	1	0.71
								301	302	1	1.52
								312	316	4	0.51
BBRC0604	RC	300200	6569980	444	42	-60	90	No significant results			
BBRC0616	RC	299783	6564465	420	222	-59	43	109	113	4	0.62
BBRC0619	RC	299320	6565780	435	318	-60	90	226	227	1	0.51
								295	296	1	1.43
								314	315	1	0.63
BBRD0623*	RC/DD	299776	6570740	436	345	-60	90	147	148	1	0.93
								169	170	1	0.50
								258	260	2	0.69
								274.1	281	6.9	0.63
								287	293	6	1.06
								300.8	301.8	0.9	2.00
BBRD0624*	RC/DD	299780	6570541	437	327	-65	90	186.5	187	0.6	0.82
								215.8	217	1.2	0.63
								229	230	1	0.64
								252.6	253.6	1.0	0.61
								264.9	266	1.1	0.59
BBRD0628*	RC/DD	299390	6567240	459	459	-55	75	328.8	329.9	1.1	1.70
								339	341.0	2.0	0.56
								346	347	1	0.76
								354	355	1	0.78
								379.2	384.0	4.7	1.12
								297	298	1	0.94
BBRC0631	RC	299103	6566210	455	486	-60	90	378	379	1	0.89
								409	410	1	0.98
								417	422	5	0.87
								470	480	10	3.07
								incl. 1m @ 21.6g/t Au from 471m			
BBRC0632	RC	299332	6566077	434	383	-80	90	118	119	1	0.60
								149	150	1	0.93
								154	155	1	3.11

Hole_ID	Hole Type	East	North	RL	Depth (m)	Dip	Azimuth	From (m)	To (m)	Significant Intercepts	
										Gold (>0.5g/t)	
										Interval (m)	Grade (g/t)
								167	177	10	0.78
								184	191	7	0.51
								193	194	1	0.53
								195	196	1	0.50
								234	235	1	0.59
								246	247	1	0.90
								261	265	4	0.75
								290	297	7	0.52
								325	326	1	0.94
								366	367	1	0.69
BBRD0633*	RC/DD	299414	6567380	437	450	-60	90	379	383	4	1.74
								245	257	12	0.56
								285	289	4	1.20
BBRC0634	RC	299484	6567381	434	191	-59	86	No significant results			
BBRC0635	RC	299404	6567828	441	448	-60	87	233	234	1	2.73
								251	258	7	1.25
								288	290	2	0.86
								354	355	1	1.05
								377	378	1	0.50
								382	383	1	0.61
								422	427	5	2.21
								440	441	1	0.51
BBRD0636*	RC/DD	305253	6562682	427	380	-60	350	92	96	4	0.77
								172	176	4	1.96
BBRD0637*	RC/DD	305171	6562666	430	410.6	-62	350	Assays Pending			
BBRD0644*	RC/DD	299620	6567845	438	330	-62	100	216.5	217.5	1	0.57
								220	221.9	1.9	0.79
								249	250	1	0.54
								254.5	257.9	3.4	2.24
								incl. 0.5m @ 12.0g/t Au from 254.5m			
								263	265.1	2.1	0.72
								275	276	1	0.70
								278	279	1	0.51
								283	286.9	3.9	3.84
								incl. 0.4m @ 21.6g/t Au from 283m			
								290.8	294	3.23	0.59
								298.8	299.1	0.3	2.04
								308	310.3	2.27	0.87
								BBRD0645*	RC/DD	299654	6567880
238.2	239.6	1.4	0.63								
242	243.3	1.3	0.87								
250	252	2	8.93								
incl. 1m @ 10.3g/t Au from 251m											
276	278	2	0.79								
BBRC0646	RC	299660	6567830	438	293	-60	90	84	85	1	2.14
								97	106	9	0.52
								119	120	1	3.99
								138	139	1	3.34
								154	155	1	0.54
								166	167	1	0.51
								173	174	1	0.85
								182	183	1	0.55
								205	206	1	0.69
								220	221	1	0.55
								241	242	1	0.71
								245	246	1	0.86
								251	256	5	0.53
								259	260	1	1.53
278	279	1	4.05								
BBRC0647	RC	299601	6567246	446	341	-73	62	89	90	1	2.94
								104	105	1	1.16
								147	148	1	1.70

Hole_ID	Hole Type	East	North	RL	Depth (m)	Dip	Azimuth	From (m)	To (m)	Significant Intercepts	
										Gold (>0.5g/t)	
										Interval (m)	Grade (g/t)
								156	161	5	1.16
								173	179	6	0.53
								209	212	3	2.11
								251	252	1	0.58
								258	262	4	0.87
BBRC0648	RC	299302	6566727	432	220	-65	90	210	211	1	0.62
								217	220	3	0.71
BBRC0649	RC	299555	6567469	435	293	-65	90	142	143	1	1.49
								178	180	2	2.03
								191	192	1	0.85
								205	208	3	3.45
								234	235	1	1.12
								258	259	1	0.62
								268	269	1	0.52
								272	273	1	0.61
BBRD0650*	RC/DD	299572	6567330	434	310	-80	90	111	113	2	1.09
								193	196	3	0.58
								203	205	2	1.25
								234.4	235	0.6	0.66
								299	304	5	0.59
BBRC0651	RC	299729	6568529	447	215	-60	90	132	133	1	0.78
								140	141	1	0.79
								149	150	1	0.60
								153	154	1	0.59
								157	158	1	0.74
								162	163	1	1.51
								191	194	3	0.63
								206	207	1	0.90
BBRC0652	RC	299580	6568130	440	308	-60	90	146	147	1	1.06
								153	154	1	0.66
								173	176	3	0.62
								181	182	1	0.68
								185	186	1	0.81
								219	225	6	0.58
								233	234	1	0.50
								242	243	1	0.89
								246	247	1	0.50
								253	254	1	1.71
								262	263	1	1.78
								271	275	4	1.17
								279	280	1	1.16
								292	297	5	1.19
BBRC0653	RC	299818	6568530	448	305	-60	90	72	73	1	0.80
								78	79	1	1.64
								92	94	2	0.84
								180	183	3	1.48
								220	226	6	1.24
								232	238	6	0.67
								247	255	8	0.91
BBRC0654	RC	299480	6568230	442	389	-60	90	Assays pending			
BBRC0655	RC	299630	6565380	422	203	-60	90	Assays pending			
BBRC0656	RC	299774	6567930	440	222	-60	90	Assays pending			
BBRC0657	RC	300220	6568230	447	203	-60	90	Assays pending			
BBRD0660*	RC/DD	299790	6570942	435	324.4	-67	90	156	157	1	0.50
BBRC0661	RC	299306	6566230	432	420	-63	90	118	119	1	0.51
								140	159	19	0.68
								163	164	1	1.43
								168	176	8	0.65
								219	223	4	0.51
								293	294	1	0.52
								298	299	1	2.11
								340	344	4	0.50
								357	359	2	1.73
								367	370	3	1.09

Hole_ID	Hole Type	East	North	RL	Depth (m)	Dip	Azimuth	From (m)	To (m)	Significant Intercepts								
										Gold (>0.5g/t)								
										Interval (m)	Grade (g/t)							
BBRD0663*	RC/DD	299385	6567468	436	411.9	-63	86	77	78	1	2.27							
								216	223	7	0.72							
								281.6	282	0.4	0.50							
								289.3	290	0.7	0.80							
								324	324.5	0.5	2.19							
								332	337.9	5.9	0.92							
								361.3	363.3	2.0	0.71							
								383.8	384.2	0.4	3.29							
								388	389	1	6.27							
BBRD0664*	RC/DD	299343	6566191	431	381	-50	90	399	400	1	0.81							
								94	95	1	1.19							
								117	127	10	0.80							
								138	139	1	0.78							
								148	149	1	3.65							
								159	164	5	0.53							
								194	195	1	0.64							
								205	206	1	0.80							
								215	222	7	1.22							
								231	233	2	0.68							
								275	278	3	1.27							
								309	313.3	4.3	0.64							
								317.3	318	0.7	1.26							
								321.1	326	4.9	0.81							
								349.6	355.0	5.5	4.26							
incl. 0.7m @ 25.8g/t Au from 349.6m																		
BBRC0665	RC	299887	6571104	433	138	-75	90	2	5	3	2.01							
								11	12	1	0.75							
								110	111	1	0.94							
								130	131	1	1.49							
BBRC0666	RC	300249	6570780	438	142	-60	90	62	65	3	0.71							
								91	92	1	0.52							
								104	105	1	1.03							
								111	115	4	9.97							
								incl. 1m @ 38.9g/t Au from 111m										
BBRD0667*	RC/DD	299291	6566190	434	405.6	-65	90	131	132	1	1.84							
								155	156	1	2.03							
								164	168	4	0.58							
								174	183	9	1.01							
								191	193	2	0.73							
								256	258	2	7.37							
								incl. 1m @ 14.2g/t Au from 257m										
								268	269	1	0.65							
								292.9	294	1.1	1.73							
								315	316	1	0.61							
								329	330	1	0.63							
								344	344.8	0.8	1.37							
350	351	1	1.57															
383.4	387	3.6	1.10															
396	397.3	1.3	5.04															
BBRC0668	RC	299666	6568180	442	210	-60	90	110	113	3	1.03							
								125	126	1	1.91							
								133	136	3	0.80							
								142	146	4	0.88							
								166	167	1	0.85							
								182	183	1	0.72							
								197	209	12	0.97							
BBRC0669	RC	299490	6566315	365	120	-60	270	11	18	7	0.52							
								26	28	2	1.00							
								89	90	1	0.54							
								94	95	1	0.51							
								99	101	2	0.75							
BBRC0678	RC	299390	6565535	434	252	-60	90	82	86	4	1.44							
								167	168	1	0.96							
								172	173	1	0.51							

Hole_ID	Hole Type	East	North	RL	Depth (m)	Dip	Azimuth	From (m)	To (m)	Significant Intercepts									
										Gold (>0.5g/t)									
										Interval (m)	Grade (g/t)								
BBRC0679	RC	299670	6568580	446	402	-60	90	176	177	1	0.86								
								229	235	6	1.18								
								197	198	1	0.51								
								224	227	3	1.12								
								232	233	1	0.52								
								256	257	1	0.57								
								264	265	1	0.95								
								305	312	7	0.66								
								327	331	4	0.76								
BBRC0680	RC	299790	6567731	439	222	-60	90	336	345	9	0.95								
								35	43	8	0.65								
								63	65	2	1.50								
								93	113	20	3.35								
								incl. 1m @ 35.3g/t Au from 96m											
								188	189	1	0.59								
								204	205	1	0.77								
								BBRC0681	RC	299560	6567990	438	342	-70	90	151	152	1	0.69
																155	156	1	0.68
182	187	5	0.64																
230	244	14	0.76																
276	277	1	0.50																
297	298	1	0.50																
321	322	1	2.85																
328	329	1	0.64																
BBRC0682	RC	299652	6567880	438	222	-80	90									107	108	1	0.83
								124	125	1	1.71								
								158	159	1	1.08								
								162	163	1	0.51								
								178	179	1	0.61								
								185	190	5	0.59								
								208	209	1	0.69								
								213	220	7	0.58								
								BBRC0683	RC	299558	6567830	439	348	-60	90	138	139	1	2.19
150	159	9	0.84																
181	182	1	1.19																
230	231	1	0.51																
236	237	1	0.81																
265	268	3	5.58																
278	280	2	0.73																
299	300	1	2.36																
305	310	5	0.63																
315	316	1	0.68																
322	323	1	0.52																
327	338	11	2.39																
343	344	1	1.23																
BBRC0684	RC	299535	6567587	433	48	-75	90	No significant results											
BBRC0685	RC	299537	6567587	433	108	-75	90	No significant results											
BBRC0686	RC	299519	6567540	434	252	-70	90	141	145	4	0.80								
								203	204	1	0.83								
								211	212	1	0.52								
								213	214	1	0.52								
								215	216	1	0.56								
								243	244	1	0.66								
BBRC0687	RC	299580	6566250	374	108	-80	25	2	3	1	0.55								
								6	11	5	0.63								
								13	14	1	0.60								
								23	27	4	0.70								
								50	51	1	0.52								
								107	108	1	4.39								
BBRC0690	RC	299455	6567080	433	330	-65	90	176	177	1	1.02								
								181	182	1	1.12								
								197	198	1	0.77								
								219	220	1	0.89								
								244	249	5	0.50								

Hole_ID	Hole Type	East	North	RL	Depth (m)	Dip	Azimuth	From (m)	To (m)	Significant Intercepts	
										Gold (>0.5g/t)	
										Interval (m)	Grade (g/t)
BBRD0691*	RC/DD	299410	6567630	444	400	-75	90	251	252	1	0.83
								266	267	1	0.86
								276	277	1	0.65
								348.4	348.8	0.4	0.79
								389	390	1	0.89
								397	397.4	0.4	0.75
BBRC0692	RC	299675	6568630	448	372	-60	90	161	162	1	0.64
								163	164	1	0.79
								213	218	5	0.61
								254	255	1	0.56
								272	273	1	0.58
								313	315	2	0.95
								322	335	13	0.93
								341	342	1	0.67
								355	356	1	0.75
370	371	1	0.71								
BBRC0693	RC	299396	6567925	441	380	-60	90	260	261	1	0.52
								266	267	1	0.72
								288	289	1	0.55
BBRC0694	RC	299730	6566472	428	250	-85	360	60	61	1	2.52
								66	67	1	3.10
								83	84	1	0.85
								121	122	1	0.75
								125	126	1	0.73
								132	135	3	0.98
								156	159	3	0.92
								165	166	1	0.68
186	200	14	2.36								
BBRC0695	RC	299683	6568530	446	390	-80	90	172	174	2	1.65
								198	199	1	0.53
								203	204	1	1.18
								230	237	7	0.60
								256	259	3	1.14
								293	294	1	1.29
								306	307	1	0.64
								337	338	1	1.02
								354	359	5	1.55
								373	374	1	0.81
								376	377	1	0.68
387	389	2	0.52								
BBRC0696	RC	299545	6568340	442	390	-60	90	Assays pending			
BBRC0700	RC	299552	6566240	372	270	-90	0	20	21	1	0.55
								31	32	1	0.88
								36	41	5	0.85
								61	66	5	0.60
								114	121	7	0.95
								133	134	1	0.69
								145	146	1	0.64
								195	196	1	0.77
								198	199	1	0.64
								204	219	15	2.27
								223	225	2	1.54
BBRC0701	RC	299199	6565990	455	284	-55	90	189	190	1	2.58
								237	242	5	0.54
								247	264	17	0.71
BBRC0702	RC	299436	6568140	440	396	-60	90	248	249	1	0.57
								257	258	1	0.69
								260	261	1	0.70
								263	264	1	0.50
								265	266	1	0.59
								292	293	1	0.76
								352	353	1	0.66
								361	362	1	0.51
364	365	1	0.52								

Hole_ID	Hole Type	East	North	RL	Depth (m)	Dip	Azimuth	From (m)	To (m)	Significant Intercepts	
										Gold (>0.5g/t)	
										Interval (m)	Grade (g/t)
								375	377	2	1.12
								394	395	1	0.50
BBRC0703	RC	299640	6568430	443	312	-80	90	Assays pending			
BBRD0704*	RC/DD	305066	6562685	432	369	-60	353	Assays pending			
BBRD0705*	RC/DD	305013	6562667	430	457.4	-60	350	Assays pending			
BBRC0706	RC	299743	6569738	443	222	-63	90	Assays pending			
BBRC0707	RC	299772	6569879	442	264	-60	90	Assays pending			
BBDD0060	DD	300080	6568630	460	160	-60	90	Assays Pending			
BBDD0070	DD	299810	6567430	434	60	-60	90	Assays Pending			
BBDD0071	DD	300000	6568230	448	150	-60	90	Assays Pending			
BBDD0072	DD	299945	6568330	450	165	-60	90	Assays Pending			
BBDD0073	DD	300105	6568730	460	100	-60	90	Assays Pending			
BBDD0074	DD	300100	6568492	454	135	-60	90	Assays Pending			
BBDD0076	DD	299731	6567830	440	10.7	-55	90	Assays Pending			
BBGT009	DD	300245	6567925	442	150.5	-55	224.3	Assays Pending			
BBGT011	DD	300138	6567169	434	180	-55	334	Assays Pending			
BBGT012	DD	300271	6568804	454	160.2	-55	228	Assays Pending			
BBGT013	DD	300049	6568908	456	150	-55	188	Assays Pending			

Appendix 2 – Bullabulling Project – JORC Code 2012 Table 1 Criteria

The table below summarises the assessment and reporting criteria used for the Bullabulling Project and reflects the guidelines in Table 1 of *The Australasian Code for the Reporting of Exploration Results, Mineral Resources and Ore Reserves* (the JORC Code, 2012).

Section 1 Sampling Techniques and Data

Criteria	JORC Code explanation	Commentary
Sampling techniques	<p><i>Nature and quality of sampling (eg cut channels, random chips, or specific specialised industry standard measurement tools appropriate to the minerals under investigation, such as down hole gamma sondes, or handheld XRF instruments, etc). These examples should not be taken as limiting the broad meaning of sampling.</i></p> <p><i>Include reference to measures taken to ensure sample representivity and the appropriate calibration of any measurement tools or systems used.</i></p> <p><i>Aspects of the determination of mineralisation that are Material to the Public Report.</i></p> <p><i>In cases where 'industry standard' work has been done this would be relatively simple (eg 'reverse circulation drilling was used to obtain 1 m samples from which 3 kg was pulverised to produce a 30 g charge for fire assay'). In other cases more explanation may be required, such as where there is coarse gold that has inherent sampling problems. Unusual commodities or mineralisation types (eg submarine nodules) may warrant disclosure of detailed information.</i></p>	<p>The Bullabulling Mineral Resource estimate is based on 158 diamond core holes (DD and RC_DD of NQ, HQ and PQ diameter) for a total of 23,728 m and 5,909 RC drillholes (5.5" face sampling hammer) for a total of 415,018m, drilled between 1985 and 2025 by various companies.</p> <p>This is a subset of the project database which comprises approximately 12,500 holes for a total of 620,000m, including AC, RAB and auger holes which were only utilised for geological interpretation where appropriate data was available.</p> <p>Approximately 75% of the holes used for estimation were drilled pre-2010</p> <p>Minerals 260 Limited</p> <p>RC samples were collected by the metre from the drill rig in calico bags via a cone splitter with a bulk coarse reject sample collected in buckets and poured on the ground.</p> <p>2–5 kg samples were collected from each metre of RC drilling with samples typically dry. Rock chips for logging were obtained by sieving a large scoop from each bag. Washed chips were placed into appropriately labelled chip trays.</p> <p>Cyclones regularly cleaned to remove hung-up clays and avoid cross-sample contamination. The coarse reject samples were weighed in small campaigns only, and the weight recorded in an Excel spreadsheet which was later entered into the database. Calico weights are recorded at the laboratory.</p> <p>Diamond core (HQ, NQ and PQ) sampled in intervals of ~1.0 m (with a minimum of 0.3 m) where possible, otherwise intervals less than 1.0 m selected based on geological boundaries.</p> <p>Drill core samples were typically half HQ and NQ. PQ core was reserved for metallurgical sampling. Samples of approximately 10 cm length were selected by the geologist and subject to bulk density measurements using the water displacement method.</p> <p>The core was cut in half parallel to the orientation mark, with one half retained and the other half sent to the laboratory for analysis.</p> <p>AC samples were collected by the metre in their entirety from the drill rig in calico bags.</p> <p>1–5 kg samples were collected from each metre of AC drilling with samples typically dry. Rock chips for logging were obtained by inspecting the calico bags. Washed chips were placed into appropriately labelled chip trays.</p> <p>Auger samples were collected at the bottom of each hole, typically at 1.5 m below surface, at blade refusal, or upon identification of a regolith colour change. Samples were hand-sieved, and approximately 100 g of the -2 mm fraction was collected and submitted in brown paper geochemistry bags.</p> <p>For RC, AC, DD and Auger samples, entire samples were oven dried for 24 hours, weighed and pulverised with 85% <75µm. If the primary sample was larger than 3 kg it was split prior to pulverising. A 50 g charge is collected and subject to fire assay (Au-AA26) and analysed for gold using atomic absorption spectrometry (AAS).</p> <p>Portable x-ray fluorescence (pXRF) determinations were performed to verify litho-geochemistry only using a Olympus Vanta portable analyser, which was regularly calibrated.</p> <p>All collars are initially collected via handheld GPS, with a surveyor to be commissioned to collect final coordinates via a differential global positioning system (GPS) (accuracy ±0.1 m).</p>

Criteria	JORC Code explanation	Commentary
		<p>Bullabulling Gold Limited (Bullabulling Gold)</p> <p>Sampling techniques are as per Minerals 260, other than the below:</p> <p>RC samples coarse reject sample collected in plastic mining bags. The coarse reject samples were weighed, and the weight recorded in a field book which was later entered into the database.</p> <p>Magnetic susceptibility was measured using a model KT-10 portable magnetic susceptibility metre with readings taken at 1 m intervals.</p> <p>Portable x-ray fluorescence (pXRF) determinations were performed to verify litho-geochemistry only using a PAS XL3t 950s GOLDD+ portable analyser, which was regularly calibrated.</p> <p>All collars surveyed by Fugro Spatial Solutions or ABIMS by differential global positioning system (GPS) (accuracy ±0.1 m).</p> <p>Historical (pre-2000)</p> <p>Similar sampling practices with a riffle splitter utilised for RC sampling.</p> <p>No information is available on the sample preparation practices.</p> <p>Gold analysis was by a mixture of methods (fire assay and acid digest, acid digest only and bottle roll), followed by AAS finish.</p>
<p>Drilling techniques</p>	<p><i>Drill type (eg core, reverse circulation, open-hole hammer, rotary air blast, auger, Bangka, sonic, etc) and details (eg core diameter, triple or standard tube, depth of diamond tails, face-sampling bit or other type, whether core is oriented and if so, by what method, etc).</i></p>	<p>Drilling techniques from 1974 to 2026 includes:</p> <p>Aircore (AC) – standard 3.5" AC drill bit</p> <p>Rotary air blast (RAB) – standard 4.25" drill bit</p> <p>RC – 5.5" with face sampling hammer</p> <p>NQ2 DD core, standard tube</p> <p>HQ3 DD core, standard tube</p> <p>PQ3 DD core, standard tube.</p> <p>Auger – standard 3.5" auger drill bit</p> <p>AC and RAB holes were used to inform geological interpretations only in the resource estimate where appropriate data was available, or sterilisation programs.</p> <p>The drilling was typically aligned at -60° to the east, which is appropriate given the strike and dip of the mineralisation. The bulk of the drilling is RC with DD holes completed for bulk density determinations and metallurgical testing.</p> <p>Holes were drilled on a nominal 35 m x 75 m grid spacing historically, with 40m x 40m by Minerals 260. RC drillholes range in depth from 1 m to 348 m, averaging 59 m. Bullabulling Gold DD holes range in depth from 136 m to 573.5 m, averaging 355 m.</p> <p>DD holes were drilled directly from surface or from base of RC pre-collars. All Bullabulling Gold, DD core was oriented where possible using an ACT REFLEX (ACT II RD) tool. All Minerals 260 DD core is oriented with an Axis orientation tool It is unknown how historical drill core was oriented and is assumed to be to industry standards.</p>
<p>Drill sample recovery</p>	<p><i>Method of recording and assessing core and chip sample recoveries and results assessed.</i></p>	<p>Sample recoveries for Bullabulling Gold's and Minerals 260's RC/AC drilling is visually estimated and recorded for each metre in Micromine Field Marshal (Bullabulling Gold), validated Excel logging software (M260 2025) and GeoBank (M260 2026 onwards).</p> <p>Analysis of historical results yielded an average recovery of 97%.</p> <p>For DD core, recovery was measured and recorded for every metre in Micromine Field Marshal software (Bullabulling Gold) or validated Excel logging software (M260 2025) and GeoBank (M260 2026 onwards).</p> <p>Diamond core recoveries averaged 99% for historical core.</p>

Criteria	JORC Code explanation	Commentary
	<i>Measures taken to maximise sample recovery and ensure representative nature of the samples.</i>	There is no recovery information available for the historical drilling. Minerals 260 RC/AC drill collars were sealed to prevent sample loss and holes were normally drilled dry to prevent poor recoveries and contamination caused by water ingress. For DD drillholes, core blocks were inserted in sections where core loss has occurred. This was recorded on the block and during the logging process and with photography of wet core.
	<i>Whether a relationship exists between sample recovery and grade and whether sample bias may have occurred due to preferential loss/gain of fine/coarse material.</i>	No relationship between sample recovery and grade was noted.
Logging	<i>Whether core and chip samples have been geologically and geotechnically logged to a level of detail to support appropriate Mineral Resource estimation, mining studies and metallurgical studies.</i>	For RC and AC drilling, geological logging was undertaken on chip samples at 1 m intervals with lithology, oxidation strength, mineralogy, grainsize, texture, colour, vein infill and percentage, metal sulphide percentage and alteration type and strength recorded. Geological logging, structural measurements, rock-quality designation (RQD) and recovery measurements were carried out on DD core. DD core was photographed wet and dry. Basic geology and colour logs were collected for auger samples. XRF determinations of lithophile elements nickel and chromium were utilised to confirm the visual identification of ultramafic or komatiitic units (Bullabulling Gold only).
	<i>Whether logging is qualitative or quantitative in nature. Core (or costean, channel, etc) photography.</i>	The logging was quantitative, based on visual field estimates
	<i>The total length and percentage of the relevant intersections logged.</i>	All holes were logged from start to finish and all logging was done with sufficient detail to meet the requirements of resource estimation and mining studies.
Sub-sampling techniques and sample preparation	<i>If core, whether cut or sawn and whether quarter, half or all core taken.</i>	DD core sample lengths were adjusted so that they did not cross lithological boundaries with ~1 m sample intervals ideally used. Samples are collected from half core cut using an onsite diamond saw. The remaining half core was stored as a library sample.
	<i>If non-core, whether riffled, tube sampled, rotary split, etc and whether sampled wet or dry.</i>	Non-core samples were collected as 1 m samples. RC and AC samples were collected using a cone splitter (Bullabulling Gold and Minerals 260) or riffle splitter (historical) to cut the sample stream and produce a 2–5 kg sample. The entire samples was collected for some AC programs. Auger samples were hand sieved with ~100g of the -2mm component collected in brown paper geochemistry bags.
	<i>For all sample types, the nature, quality and appropriateness of the sample preparation technique.</i>	Sample preparation followed industry best practice standards and was conducted by internationally recognised laboratories including ALS (2025-current), Amdel, Jinning, Genalysis (2010-2014) and A.C.E. Laboratories Kalgoorlie and Broken Hill Minerals Southern Cross laboratory (pre-2010). Sample preparation included oven drying, jaw crushing and pulverising to 80% passing 75 µm.
	<i>Quality control procedures adopted for all sub-sampling stages to maximise representivity of samples.</i>	Field duplicates were collected at a rate of 1 in 20 on average. A proportion of pulp duplicates were re- submitted for assay and then assayed by an umpire laboratory. Subsampling is performed during the preparation stage according to the laboratory's internal protocols.
	<i>Measures taken to ensure that the sampling is representative of the in situ material collected, including for instance results for field duplicate/second-half sampling.</i>	Measures taken to ensure representative drill samples included: Regular cleaning of cyclones and sampling equipment to prevent contamination Statistical comparison of field and laboratory duplicates, standards and blanks Statistical comparison of anomalous composite assays versus average of follow up 1 m assays.

Criteria	JORC Code explanation	Commentary
	<i>Whether sample sizes are appropriate to the grain size of the material being sampled.</i>	The entire sample (2–5 kg) was submitted to the laboratory consistent with industry standards.
Quality of assay data and laboratory tests	<i>The nature, quality and appropriateness of the assaying and laboratory procedures used and whether the technique is considered partial or total.</i>	<p>Assay and laboratory procedures were selected following a review of techniques provided by internationally certified laboratories.</p> <p>Historical</p> <p>Pre-1994 samples were analysed for gold at A.C.E. Laboratories using a 24-hour bottle roll cyanide extraction technique with an AAS finish. Residues of all samples with solution reads greater than 0.4 g/t Au were assayed by Genalysis using the fire assay/AAS technique.</p> <p>Post-1994, samples were sent to Broken Hill Minerals Southern Cross laboratory who used an acid digest/AAS technique with a 0.01 g/t Au detection limit.</p> <p>Bullabulling Gold</p> <p>From June 2010 to December 2012, samples were assayed for gold at ALS facilities by the fire assay method (50 g charge 0.01 g/t Au detection limit).</p> <p>RC samples from five pre-collars in the first DD drilling program (June to August 2010) were assayed at ALS using by fire assay (30 g charge 0.002 g/t Au detection limit) and half core samples by fire assay (30 g charge 0.01 g/t Au detection limit). Solutions from samples assaying >10 g/t Au were diluted and reanalysed using method Au-DIL (Au overlimit by dilution).</p> <p>The final gold assay was selected in priority of Au-DIL then 50 g charge then 30 g charge.</p> <p>From January 2013 to April 2014, samples were assayed for gold at the Bureau Veritas laboratory in Kalgoorlie laboratory using a 40 g charge (0.01 g/t Au detection limit).</p> <p>The assay techniques used are total.</p> <p>Minerals 260</p> <p>From April 2025, samples were assayed for gold at ALS facilities by the fire assay method (50 g charge 0.01 g/t Au detection limit), with ME-ICP61 and four acid digest for 34 elements:</p> <p>Ag, Al, As, Ba, Be, Bi, Ca, Cd, Co, Cr, Cu, Fe, Ga, K, La, Li, Mg, Mn, Mo, Na, Ni, P, Pb, S, Sb, Sc, Sr, Th, Ti, U, V, W, Zn.</p>
	<i>For geophysical tools, spectrometers, handheld XRF instruments, etc, the parameters used in determining the analysis including instrument make and model, reading times, calibrations factors applied and their derivation, etc.</i>	<p>Bullabulling Gold performed XRF determinations to verify litho-geochemistry using a PAS XL3t 950s GOLDD+ handheld XRF (pXRF). The pXRF readings were not representative of grade intervals and are not reported.</p> <p>Minerals 260 use an Olympus Vanta pXRF to assist with litho-geochemistry. The pXRF readings were not representative of grade intervals and are not reported.</p>
	<i>Nature of quality control procedures adopted (eg standards, blanks, duplicates, external laboratory checks) and whether acceptable levels of accuracy (ie lack of bias) and precision have been established</i>	<p>Historical</p> <p>Bullabulling Gold inserted field duplicates at a rate of 1 in 20 samples on average. A proportion of pulp duplicates were re-submitted for assay including assay by an umpire laboratory.</p> <p>Laboratory standards checked for accuracy and precision.</p> <p>No information is available on the historical quality control procedures and is assumed to be done to industry standards.</p> <p>Minerals 260</p> <p>QAQC samples are inserted 1:10 samples, with a combination of blanks, certified reference materials and field duplicates. QAQC results are analysed monthly to ensure there is no bias in samples.</p>
Verification of sampling and assaying	<i>The verification of significant intersections by either independent or alternative company personnel.</i>	Intersections were peer reviewed in-house.
	<i>The use of twinned holes.</i>	No twin holes were drilled.

Criteria	JORC Code explanation	Commentary
	<i>Documentation of primary data, data entry procedures, data verification, data storage (physical and electronic) protocols.</i>	<p>Historical</p> <p>All Bullabulling Gold field data was manually collected, entered into Micromine Field Marshall software, validated in Micromine, and loaded into a commercial database (GBIS). All electronic data was routinely backed up. Data was exported as csv files for processing by several different software packages.</p> <p>No information is available on the historical data management and is assumed to be done to industry standards.</p> <p>Minerals 260</p> <p>Data is collected and entered into validated Excel spreadsheets (2025) and Geobank (2026 onwards), validated in Micromine, and loaded into an DataShed database where additional checks are performed by an external contractor. Data is exported as an Access database to use in various software packages.</p>
	<i>Discuss any adjustment to assay data.</i>	There was no requirement to adjust assay data.
Location of data points	<p><i>Accuracy and quality of surveys used to locate drill holes (collar and down-hole surveys), trenches, mine workings and other locations used in Mineral Resource estimation.</i></p> <p><i>Specification of the grid system used</i></p> <p><i>Quality and adequacy of topographic control.</i></p>	<p>The local mine grid was based on AMG Zone 51 coordinates up until 2014. From 2015 onwards GDA94/MGA Zone 51 was used including for the resource estimate. Nominal RLs based on regional topographic datasets were used initially; however, these were updated as differential GPS coordinates were collected.</p> <p>Bullabulling Gold</p> <p>All collars were surveyed by Fugro Spatial Solutions or ABIMS by differential GPS (accuracy $\pm 0.1\text{m}$). A campaign of differential GPS surveys of surviving historical collars was undertaken by Fugro and results compared with the inherited database. Results indicated that the location data for historical drilling is accurate.</p> <p>Almost all drilling was subject to gyroscopic survey. No downhole surveys were undertaken on vertical holes.</p> <p>From January 2011 to April 2014, continuous downhole surveys were performed mainly in-rod by gyroscopic technique on the bulk of RC drillholes (85%). A proportion (13%) were surveyed down open hole. 24 holes where downhole surveys were unable to be performed relied on collar survey data for downhole traces.</p> <p>Historical</p> <p>Very few of the historical RC drillholes have downhole surveys and therefore rely on collar information.</p> <p>Historical DD holes have downhole survey information based on Eastman camera surveys, with minimal hole deviation noted.</p> <p>Collar surveys were completed by Spectrum Surveys and Datum Surveys using an unknown survey instrument. Coordinates were resurveyed to ensure accuracy, with Datum Survey data given preference, where available.</p> <p>Minerals 260</p> <p>All AC, RC and DD collars are initially surveyed with handheld GPS (accuracy $\pm 5\text{m}$), with all drill collars to be picked up by an external surveyor using a differential GPS. Coordinates are collected in GDA94/MGA Zone 51 and GDA2020/MGA Zone 51.</p> <p>Auger coordinates are surveyed with handheld GPS (accuracy $\pm 5\text{m}$) in GDA94/MGA only.</p> <p>Downhole surveys for all holes are conducted with a True North Seeking Gyro, which is regularly calibrated.</p>
Data spacing and distribution	<i>Data spacing for reporting of Exploration Results.</i>	<p>Historical</p> <p>Drilling of the main 7 km north-south Bullabulling mineralised trend was completed along a set of east-west trending sections. The section spacing typically ranges from 20 m x 20 m apart to 35 m x 75 m apart. Preliminary drilling of the northwest-southeast oriented portion of the mineralised trend over a strike length of 2 km was undertaken on east-west</p>

Criteria	JORC Code explanation	Commentary
		<p>sections.</p> <p>From January 2013, infill drilling of the northwest-southeast oriented trend along the Kraken areas was completed on northeast-southwest trending sections orthogonal to the mineralised trend. Section spacing was maintained at 35 m x 75 m.</p> <p>Areas were classified as Indicated where there is infill drilling at 20–40 m along strike and 20 m on section and where the geological and grade continuity are robust. Areas with drill spacing 40–80 m along strike and/or along section were classified as Inferred. All laterite material was set to Inferred as the drilling is predominantly historical.</p> <p>Minerals 260</p> <p>Infill and step out drilling is conducted at 40m along section and 40 to 50m along strike. Exploration holes are completed on an 160 x 160m spacing initially, with infill holes drilled pending results.</p>
	<i>Whether the data spacing and distribution is sufficient to establish the degree of geological and grade continuity appropriate for the Mineral Resource and Ore Reserve estimation procedure(s) and classifications applied.</i>	<p>The section spacing is sufficient to establish the degree of geological and grade continuity necessary to support the resource classifications applied.</p> <p>The spacing of holes is considered of sufficient density to provide an “Indicated” or “Inferred” classification under the JORC Code (2012).</p>
	<i>Whether sample compositing has been applied.</i>	<p>Historical</p> <p>No sample compositing was applied to historical drilling.</p> <p>Minerals 260</p> <p>For intervals deemed to have a low potential of mineralisation based on surrounding data, samples are composited to 4m samples with the 1m samples retained. Samples are scooped off the drill pad and placed into a calico. If results are anomalous, the 1m samples are sent for analysis.</p>
Orientation of data in relation to geological structure	<i>Whether the orientation of sampling achieves unbiased sampling of possible structures and the extent to which this is known, considering the deposit type.</i>	<p>Drilling was angled typically at -60° to achieve the most representative intersections through mineralisation. Drilling of historic mining infrastructure was vertical.</p>
	<i>If the relationship between the drilling orientation and the orientation of key mineralised structures is considered to have introduced a sampling bias, this should be assessed and reported if material.</i>	<p>Drilling is typically oriented perpendicular to the interpreted strike of the geology and no bias is envisaged.</p> <p>No sampling bias was observed.</p>
Sample security	<i>The measures taken to ensure sample security.</i>	<p>Historical</p> <p>Bullabulling Gold’s RC and DD core samples were collected from drill site and delivered by the company to either to ALS or Amdel in Kalgoorlie following standard chain of custody procedures.</p> <p>Core prepared for metallurgical testwork was stored at site and then freighted to ALS’ metallurgical facility in Perth. Pulp samples are boxed and stored at site in locked sea containers.</p> <p>There is no available information on the historical sample security which is assumed to be done to industry standards.</p> <p>Minerals 260</p> <p>RC, AC, DD and auger samples were collected from drill site and delivered by freight company to ALS in Perth following standard chain of custody procedures.</p>
Audits or reviews	<i>The results of any audits or reviews of sampling techniques and data.</i>	<p>In late 2011, a review of the ALS assay data was undertaken by contractor RSC who made a number of recommendations to improve laboratory practices. Following the review, the quality of the quality control samples submitted by Bullabulling Gold improved.</p> <p>In March 2025, an audit of ALS, Perth was conducted by Minerals 260 geologists to view laboratory practices and cleanliness. No issues were observed.</p>

Section 2 Reporting of Exploration Results

Criteria	JORC Code explanation	Commentary
<p>Mineral tenement and land tenure status</p>	<p><i>Type, reference name/number, location and ownership including agreements or material issues with third parties such as joint ventures, partnerships, overriding royalties, native title interests, historical sites, wilderness or national park and environmental settings.</i></p> <p><i>The security of the tenure held at the time of reporting along with any known impediments to obtaining a licence to operate in the area.</i></p>	<p>The Bullabulling Project comprises of:</p> <p>The following tenements 100%-owned by Bullabulling Operations Pty Ltd (BOPL) and Minerals 260 Holdings Pty Ltd, which are wholly owned subsidiaries of Minerals 260 Limited:</p> <p>11 granted Mining Leases (M15/1414, M15/282, M15/483, M15/503, M15/529, M15/552, M15/554, M15/1878, M15/1879, M15/1880, M15/1881). 1 Mining Lease application (M15/1939). 9 granted Exploration Licences (E15/1392, E15/1485, E15/1798, E15/1831, E15/2111, E15/2113, E15/2114, E15/2117, E15/2118). 14 Exploration Licence Applications (E15/2112, E15/2150, E15/2156, E15/2165, E15/2168, E15/2170, E15/2172, E15/2176, E15/2182, E15/2183, E15/2184, E15/2185, E15/2186, E15/2187). 17 granted General Purpose Leases (G15/30, G15/31, G15/32, G15/33, G15/34, G15/35, G15/36, G15/37, G15/38, G15/39, G15/40, G15/41, G15/42, G15/44, G15/45, G15/47, G15/49). 25 granted Miscellaneous Licences (L15/156, L15/157, L15/158, L15/196, L15/206, L15/218, L15/222, L15/328, L15/330, L15/331, L15/332, L15/333, L15/334, L15/335, L15/336, L15/339, L15/357, L15/358, L15/359, L15/499, L15/503, L15/505, L15/507, L15/509, L15/511). 17 Miscellaneous License Applications (L15/510, L15/512, L15/513, L15/514, L15/515, L15/516, L15/517, L15/518, L15/519, L15/520, L15/521, L15/522, L15/528, L15/529, L15/530, L15/531, L15/539). 13 granted Prospecting Licences (P15/6208, P15/6209, P15/6210, P15/6211, P15/6212, P15/6213, P15/6381, P15/6618, P15/6762, P15/6763, P15/6764, P15/6788, P15/6789). 7 Prospecting Licence Applications (P15/6971, P15/6972, P15/6973, P15/6993, P15/7010, P15/7011, P15/7012).</p> <p>The 26 Prospecting Licences subject to an option agreement are held by Belararox Limited (P15/6427, P15/6474 to P15/6492, P15/6559 to P15/6264).</p> <p>The following tenements held by Bullabulling Operations No. 2 Pty Ltd, a wholly owned subsidiary of Minerals 260, in Joint Venture with Geko Explore Pty Ltd:</p> <p>80% owned: 2 granted Mining Licences (M15/467, M15/1083). 7 granted Exploration Licences (E15/1561, E15/1569, E15/1591, E15/1606, E15/1607, E15/2087, E15/2107). 9 Prospecting Licence Applications (P15/6930, P15/6931, P15/6932, P15/6933, P15/6934, P15/6935, P15/6936, P15/6937, P15/6938).</p> <p>60% owned: 1 granted Exploration Licence (E15/1612). 9 granted Mining Licences (M15/59, M15/549, M15/826, M15/901, M15/1035, M15/1260, M15/1454, M15/1791, M15/1807, 3 granted Prospecting Licences (P15/6363, P15/6375, P15/6376). 4 Prospecting Licence Applications (P15/6877, P15/6939, P15/6940, P15/6941).</p> <p>The tenement package forms a largely contiguous, 1,160 km² area located ~65 km southwest of Kalgoorlie, Western Australia.</p> <p>Several tenements are subject to royalties:</p> <p>Franco Nevada Australia Pty Ltd – 2.45% gross royalty on all gold produced within a 2.5km buffer around G15/45, M15/282, M15/483, M15/503, M15/529, M15/552, M15/554, M15/1414 and M15/1879 (see ASX announcement dated 23 Feb 2026 for more information).</p> <p>Vox Royalty Australia Pty Ltd – A\$10/fine ounce (or fine ounce equivalent) of gold produced (post the first 100,000 ounces produced) on M15/503 and M15/1414.</p> <p>The Bullabulling Project is largely contained within the Bullabulling Pastoral Lease owned by Bullabulling Operations Pty Ltd. Bullabulling Operations Pty Ltd has agreed to transfer the Bullabulling Pastoral Lease to Norton Gold Fields Pty Ltd. Norton Gold Fields Pty Ltd is the beneficial holder of the Bullabulling Pastoral Lease. An Access and Compensation Deed has been executed with Norton Gold Fields Pty Ltd</p>

Criteria	JORC Code explanation	Commentary
		<p>providing permission to access to the Bullabulling Pastoral Lease on completion of the transfer</p> <p>Bullabulling Operations Pty Ltd and Bullabulling Gold Pty Ltd has a Native Title Land Use Agreement in place.</p>
	<p><i>The security of the tenure held at the time of reporting along with any known impediments to obtaining a licence to operate in the area.</i></p>	<p>All granted licences are currently in good standing.</p>
<p>Exploration done by other parties</p>	<p><i>Acknowledgment and appraisal of exploration by other parties.</i></p>	<p>Ownership of the Bullabulling Project has changed several times since initial exploration work in the early 1970s. The major work phases included:</p> <p>Western Mining Corporation from 1974 to 1982: 150 RC holes were drilled to the north of the current Phoenix pit.</p> <p>Valiant Consolidated Ltd and Hill Minerals NL joint venture in 1985. Work included magnetic surveys, soil sampling and RC and RAB drilling which led to the discovery of the Bacchus deposit.</p> <p>Central Kalgoorlie Gold Mines NL explored the area north and south of the Great Eastern Highway at the same time focusing on the laterite gold mineralisation. Drilling confirmed the presence of lateritic and primary mineralisation and the existence of the Phoenix deposit.</p> <p>Samantha Gold NL purchased the project in 1993. The drilling database at the time consisted of 6,500 auger, RAB, AC, RC and DD holes. Samantha continued RC drilling focusing on the Bacchus and Phoenix areas. Samantha Gold became Resolute Samantha Limited and then Resolute Limited in 1996.</p> <p>Open pit mining commenced in 1995 and focused on the Bacchus and Phoenix areas. Small pits were also developed in the Hobbit and Dicksons areas exploiting supergene mineralisation.</p> <p>In 2002, Jervois Mining Limited acquired the project from Resolute and commenced a small heap leach operation.</p> <p>Jervois Mining Limited sold the project to Auzex Resources Limited in February 2010. Ongoing exploration was carried out under a joint venture with GGG Resources Plc. By February 2012, 696 holes (mostly RC) totalling 114,259 m had been drilled.</p> <p>Bullabulling Gold Limited was formed in April 2012 following GGG Resources purchase of Auzex Resources 50% interest in the project. A further 69 holes for 10,816 m of mostly RC drilling had been completed by April 2013 including resource updates in 2012 and 2013 and a prefeasibility study in 2013.</p> <p>In September 2014, Norton Gold Fields (“Norton”) completed a takeover of Bullabulling Gold who in turn was acquired by Zijin Mining Group Co. Ltd in May 2015. Additional exploration and metallurgical drilling and testwork was completed along with a Mineral Resource update, mining studies and environmental surveys.</p>
<p>Geology</p>	<p><i>Deposit type, geological setting and style of mineralisation.</i></p>	<p>The Bullabulling project is located within the Coolgardie Domain of the Kalgoorlie Terrane in the Archaean Yilgarn Craton of Western Australia.</p> <p>The greenstone sequences within Coolgardie Domain are bounded by the Zuleika Shear to the east and the Ida Fault to the west. The Kunanalling Shear Zone passes through the middle of the domain.</p> <p>The domain comprises a series of north-south striking mafic, ultramafic, felsic volcanic and sedimentary rocks which are extensively metamorphosed from multiple deformation phases ranging from greenschist to amphibolite facies metamorphism. The stratigraphy is generally dipping 30–40° to the west and is cut by numerous pegmatite/aplite dykes and sills. Variations in dip occur due to folding and occasional faulting.</p> <p>Gold mineralisation is hosted in a continuous sequence of amphibolite which strikes over approximately 8 km. The amphibolites range from hornblende-rich to quartz-rich and overlie an ultramafic basement.</p>

Criteria	JORC Code explanation	Commentary
		The Bullabulling trend is typified by a network of ductile high strain zones and folds that broadly parallel the stratigraphy and are the result of multiple deformation events. The structures have allowed fluid flow into the amphibolite sequence resulting in the deposition and remobilisation of gold.
Drill hole Information	<p>A summary of all information material to the understanding of the exploration results including a tabulation of the following information for all Material drill holes:</p> <ul style="list-style-type: none"> easting and northing of the drill hole collar elevation or RL (Reduced Level – elevation above sea level in metres) of the drill hole collar dip and azimuth of the hole down hole length and interception depth hole length. 	Provided in Appendix 1
Data aggregation methods	<p>In reporting Exploration Results, weighting averaging techniques, maximum and/or minimum grade truncations (eg cutting of high grades) and cut-off grades are usually Material and should be stated.</p> <p>Where aggregate intercepts incorporate short lengths of high grade results and longer lengths of low grade results, the procedure used for such aggregation should be stated and some typical examples of such aggregations should be shown in detail.</p> <p>The assumptions used for any reporting of metal equivalent values should be clearly stated.</p>	<p>Drilling assays have been composited using a weighted average of gold grades, with a 0.5g/t Au cut-off. No top cuts have been applied to grades. The resource cut-off is 0.4g/t Au.</p> <p>Shorter intercepts with higher grades have been reported provided the grade (g/t Au) x thickness (m) is equal or greater than 1.</p> <p>N/A</p>
Relationship between mineralisation widths and intercept lengths	<p>These relationships are particularly important in the reporting of Exploration Results.</p> <p>If the geometry of the mineralisation with respect to the drill hole angle is known, its nature should be reported.</p> <p>If it is not known and only the down hole lengths are reported, there should be a clear statement to this effect (eg 'down hole length, true width not known').</p>	<p>The Bullabulling mineralisation parallels the stratigraphy where it dips at between 15° and 60° towards the west, averaging around 30°. Southeast of Kraken, the mineralisation is oriented about an open fold with the stratigraphy and strikes northwest-southeast with mineralisation dipping between 30° and 45° to the southwest.</p> <p>Drilling has been completed perpendicular to mineralisation with most holes orientated to the east and dipping at -60°.</p> <p>The true thickness of mineralisation is estimated at between 85% and 95% of the reported drillhole intercepts, unless otherwise stated.</p>
Diagrams	<p>Appropriate maps and sections (with scales) and tabulations of intercepts should be included for any significant discovery being reported. These should include, but not be limited to a plan view of drill hole collar locations and appropriate sectional views.</p>	Refer to Figures in body of the announcement.
Balanced reporting	<p>Where comprehensive reporting of all Exploration Results is not practicable, representative reporting of both low and high grades and/or widths should be practiced to avoid misleading reporting of Exploration Results.</p>	All RC and diamond drilling results by Minerals 260 for the Bullabulling project have been reported in Appendix 1.
Other substantive exploration data	<p>Other exploration data, if meaningful and material, should be reported including (but not limited to): geological observations; geophysical survey results; geochemical survey results; bulk samples – size and method of treatment; metallurgical test results; bulk density, groundwater, geotechnical and rock characteristics; potential deleterious or contaminating substances.</p>	All other substantive exploration data is reported in this announcement.

Criteria	JORC Code explanation	Commentary
Further work	<i>The nature and scale of planned further work (eg tests for lateral extensions or depth extensions or large-scale step-out drilling).</i>	Mineral 260' has the following activities planned for 2026: <ul style="list-style-type: none"> • RC and DD infill and extensional drilling at main deposit areas. • Initial testing of regional targets. • Sterilisation drilling • Water bore drilling. • Geotechnical and metallurgical drilling and testwork. • Heritage and environmental surveys. • Auger drilling