

Perpetual Secures Extensive Historical Technical Database at Nevada Scheelite Project to Fast-Track Project Advancement

HIGHLIGHTS

- Perpetual has secured an extensive historical technical database for the Nevada Scheelite Project in Nevada, USA.
- Historical information represents decades of exploration and mine development activity, fast-tracking Perpetual's technical work and saving what is estimated to be many millions of dollars in equivalent data acquisition costs.
- Database includes records from more than 400 historical drill holes (as previously announced; see ASX announcement 17 June 2026), together with detailed geological plans, sections and mine development information.
- Historical information sourced from multiple operators and government agencies, including Union Carbide, the United States Bureau of Mines (USBM) and the Defence Minerals Exploration Administration (DMEA).
- Extensive collection of historical cross sections and mine plans expected to significantly assist geological interpretation and targeting.
- Data will augment the well-preserved historical drill core retained in on-site core storage facility, which has potential to be used for JORC-resource advancement.
- Digitisation and compilation of the historical database is now underway.
- Data expected to support the fast-track development of a modern 3D geological model of the Nevada Scheelite mineralised system.

Perpetual Resources Ltd ("Perpetual" or "the Company") (ASX: PEC) is pleased to advise that it has secured access to a substantial historical geological and mining database associated with its recently acquired Nevada Scheelite Project in Nevada, USA (see ASX announcement 17 June 2026).

The database comprises records from more than 400 historical drill holes, detailed geological cross sections, mine plans, level plans, longitudinal sections and associated technical documentation generated during multiple phases of exploration, development and mining activity over many decades of historical activity.

Importantly, the historical information originates from several respected operators and government agencies, including Union Carbide, the United States Bureau of Mines (USBM) and the Defence Minerals Exploration Administration (DMEA), providing a significant body of technical information for review and integration.

Perpetual Resources Ltd

T: 08 6256 5390

E: info@perpetualresources.co

W: perpetualresources.co

ACN: 154 516 533

Principal & Registered Office:

Suite 2, 68 Hay Street, Subiaco, Western Australia 6008



Perpetual has commenced a systematic digitisation program aimed at compiling and validating the historical information into a modern geological database.

The Company believes the information will provide a strong foundation for geological interpretation and may assist in refining and fast-tracking exploration targeting, as well as understanding the geometry and controls of mineralisation across the project area.

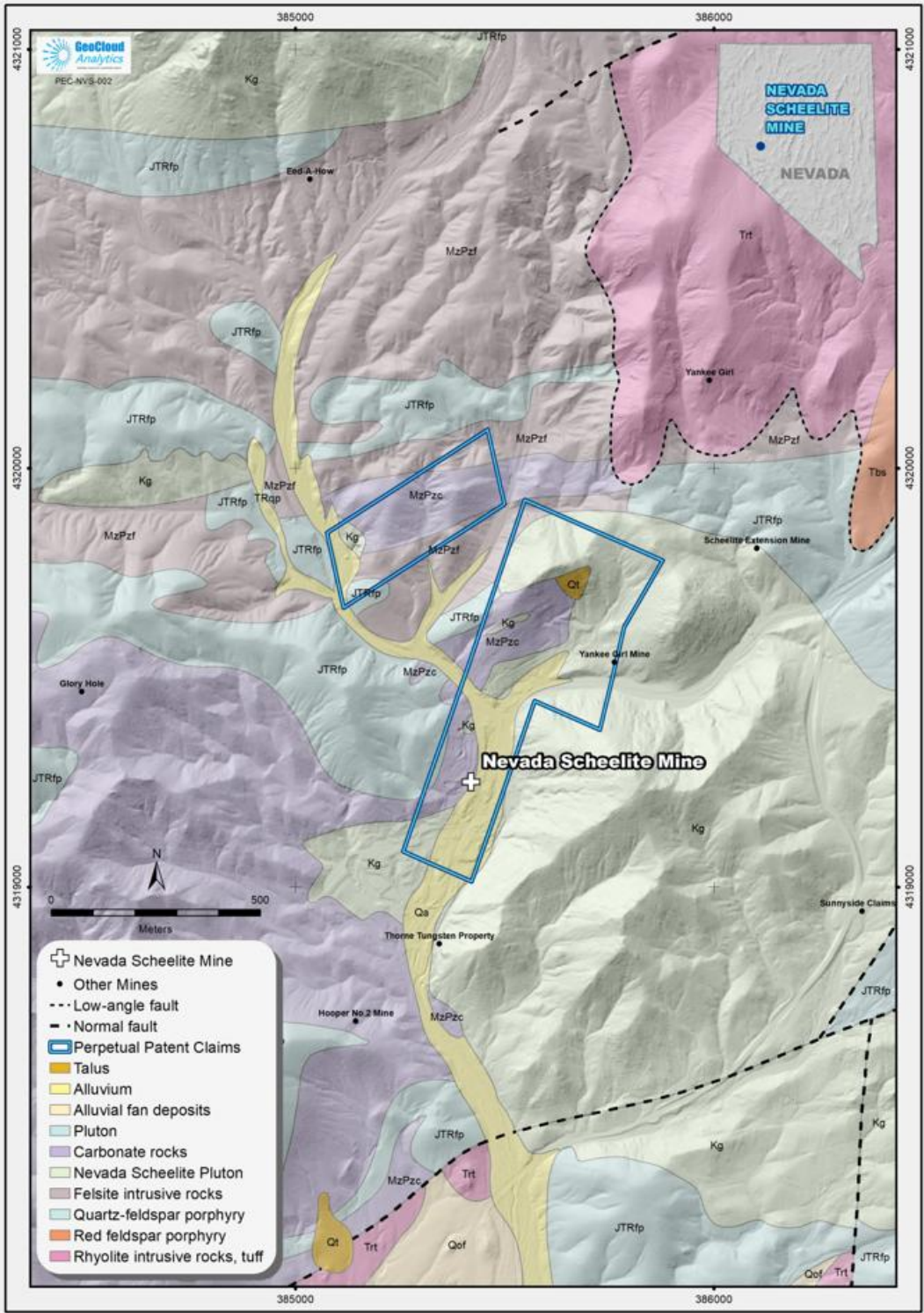


Figure 1: Project location, geology and claim boundaries

Executive Chairman, Julian Babarczy, commented:

“One of the most exciting aspects of the Nevada Scheelite Project is not just the historical production and high-grade nature of the asset, but the extraordinary amount of technical work that has already been completed by previous operators and government agencies over several decades.

The database we have secured includes more than 400 historical drill holes, extensive geological sections, mine plans and a substantial collection of preserved drill core. Collectively, this represents a significant technical foundation that would likely require many millions of dollars and considerable time to replicate today.

Importantly, this information provides Perpetual with a significant head start. Rather than starting from a blank sheet of paper, we are able to leverage decades of drilling, geological interpretation and mine development work as we build a modern three-dimensional geological model and advance our understanding of the mineralised system.

We are particularly encouraged by the preserved drill core, which has the potential to support future geological verification and analytical work, subject to successful reconciliation with the historical records. Together with the digitisation program now underway, we believe this dataset has the potential to materially accelerate the technical evaluation and advancement of the Nevada Scheelite Project”.

Historical Core Storage

The Company has also confirmed the existence of a substantial collection of historical diamond drill core stored in a dedicated core facility at the project.

Initial inspections indicate the core has been generally well preserved. Work is now underway to catalogue and reconcile the available core with historical drilling records.

The Company believes this material may provide opportunities for future geological verification and analytical work, subject to successful identification, logging and validation of individual drill holes and intervals.



Figure 2: Historical drill core retained at the Nevada Scheelite Project.

Geological Modelling Opportunity

The historical database includes numerous geological cross sections, longitudinal projections and mine development plans that provide valuable insight into the geometry and continuity of mineralisation within the Nevada Scheelite system.

Digitisation of these records is currently underway and will form the basis for development of a modern three-dimensional geological model.

The Company expects this work to improve targeting of future exploration activities and support ongoing technical evaluation of the project.

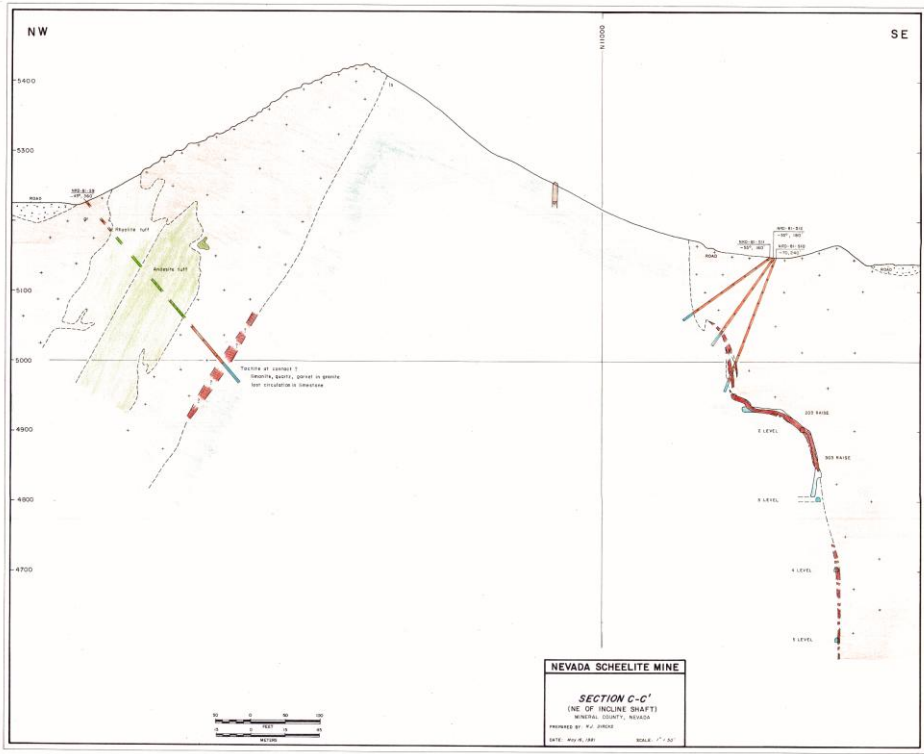
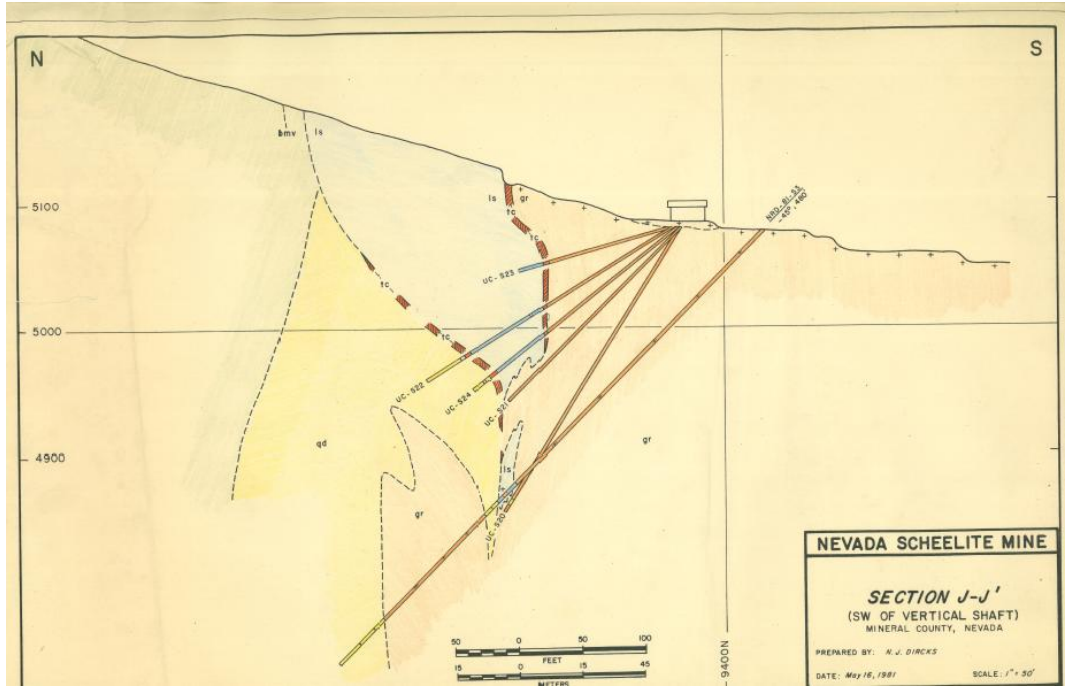


Figure 3: Cross sections at the Nevada Scheelite Project



Figure 4: Historical Map of Nevada Scheelite Project showing extent of historical drilling

Next Steps

Perpetual's immediate technical work program will focus on:

1. Imminent site visit by Perpetual's geological team to the Nevada Scheelite Tungsten Project.
2. Commencement of digitisation and compilation of historical drilling and geological data.
3. Validation and reconciliation of historical drill hole records and survey information.
4. Cataloguing and logging of preserved historical drill core.
5. Construction of a modern 3D geological model.
6. Identification of priority exploration and resource definition targets.
7. Assessment of opportunities for confirmatory drilling and modern analytical programs.
8. Ongoing review of historical mining and production records to support project evaluation.

This announcement has been authorised for release by the Board of Perpetual Resources Limited.

- ENDS -

KEY CONTACT

Julian Babarczy

Executive Chairman

E info@perpetualresources.co

ABOUT PERPETUAL RESOURCES LIMITED

Perpetual Resources Limited (Perpetual) is an ASX-listed company pursuing exploration and development of critical minerals essential to the fulfilment of global new energy requirements.



Perpetual is active in exploring for lithium and other critical minerals in the Minas Gerais region of Brazil, where it has secured approximately 12,000 hectares of highly prospective lithium exploration permits, within the pre-eminent lithium (spodumene) bearing region that has become known as Brazil's "Lithium Valley".

Perpetual has successfully secured approximately 8,714 hectares of highly prospective tungsten claims in Paraíba State, Brazil, within the Seridó Mineral Province (SMP)—South America's leading tungsten-producing region, which has historically produced over 60,000 tonnes of WO_3 .¹ The concessions are strategically located 6km southwest and along trend from the Quixaba Mine and 22km northwest of the Ilha Grande Mine, placing the project within the centre of a proven high-grade tungsten corridor.

Perpetual has also entered into a binding agreement to acquire the historic Nevada Scheelite tungsten project in Nevada, USA, a brownfields tungsten asset with extensive historical mining, drilling and processing infrastructure located within one of the world's leading mining jurisdictions.

Perpetual also operates the Beharra Silica Sand development project, located 300km north of Perth and 96km south of the port town of Geraldton in Western Australia.

Perpetual continues to review complementary opportunities consistent with its focus on critical minerals.

COMPLIANCE STATEMENTS

Forward-looking statements

This announcement contains forward-looking statements which involve a number of risks and uncertainties. These forward-looking statements are expressed in good faith and believed to have a reasonable basis. These statements reflect current expectations, intentions or strategies regarding the future and assumptions based on currently available information. Should one or more of the risks or uncertainties materialise, or should underlying assumptions prove incorrect, actual results may vary from the expectations, intentions and strategies described in this announcement. No obligation is assumed to update forward looking statements if these beliefs, opinions and estimates should change or to reflect other future developments.

Disclaimer

No representation or warranty, express or implied, is made by Perpetual that the material contained in this document will be achieved or proved correct. Except for statutory liability and the ASX Listing Rules which cannot be excluded, Perpetual and each of its directors, officers, employees, advisors and agents expressly disclaims any responsibility for the accuracy, correctness, reliability or completeness of the material contained in this document and excludes all liability whatsoever (including in negligence) for any loss or damage which may be suffered by any person through use or reliance on any information contained in or omitted from this document.

Competent Person Statement

Information in this announcement relating to geological planning and the compilation and interpretation of historical technical data is based on information compiled by Mr Jonathan King, who is a Member of the Australian Institute of Geoscientists (AIG). Mr King is a Director of Geoimpact Pty Ltd and is an independent geological consultant to the Company, and has sufficient experience that is relevant to the style of mineralisation and type of deposit under consideration, and to the activity which he is undertaking, to qualify as a Competent Person as defined in the 2012 Edition of the Australasian Code for Reporting of Exploration Results, Mineral Resources and Ore Reserves (JORC Code). Mr King consents to the inclusion in this announcement of the matters based on his information in the form and context in which they appear.

No new information

Except where explicitly stated, this announcement contains references to prior exploration results and historical production information, all of which have been cross-referenced to previous market announcements made by the Company. The Company confirms that it is not aware of any new information or data that materially affects the information included in the relevant market announcements.