

## GREENVALE CONSOLIDATES A MAJOR URANIUM DISTRICT WITH ACQUISITION OF THE PINE CREEK URANIUM PROJECT

**Transformational acquisition includes the high- grade Thunderball Uranium Deposit, multiple drill-ready targets and establishes a district-scale 2,466km<sup>2</sup> uranium exploration portfolio in a premier uranium province within the Northern Territory**

### **Highlights**

- Binding term sheet executed to acquire **the uranium exploration rights** for the Pine Creek Uranium Project in the Northern Territory held by Patronus Resources Ltd (ASX:PTN) ('Patronus').
- The Pine Creek Uranium Project includes multiple granted Exploration Licences and Mining Leases, covering a total area of approximately 1,250km<sup>2</sup> across the Pine Creek Orogen, a **world-class Uranium field** with a longstanding history of uranium mining.
- The project includes the **ultra-high grade Thunderball Uranium deposit**, where recent re-assaying and drilling by Patronus delivered exceptional results including:
  - TPCDD026 with **10m @ 25,381ppm U<sub>3</sub>O<sub>8</sub>** from 145m
  - TPCRD019 with **10m @12,264ppm U<sub>3</sub>O<sub>8</sub>** from 139m; and
  - TPCRD093 with **13m @7,045ppm U<sub>3</sub>O<sub>8</sub>** from 135m.
- The Pine Creek Uranium Project includes **multiple drill-ready targets and advanced uranium prospects along a 10km long structural corridor** extending from the Thunderball deposit along the Hayes Creek Fault Zone.
- The Hayes Creek Fault Zone runs from the Pine Creek Uranium Project, into the northernmost tenement of Greenvale's adjoining Dougals River Project (EL34157), where the **Company is imminently about to commence an airborne geophysics survey**.
- The exploration rights more than doubles Greenvale's strategic position in the Pine Creek region, creating a **continuous, district-scale uranium exploration footprint covering 2,466km<sup>2</sup>**, with an exceptional pipeline of exploration opportunities.
- Patronus to become a substantial shareholder of Greenvale with a cornerstone shareholding of 19.6% following completion of the transaction with a **commitment to support the growth and development** of the new expanded project.

*"This strategic acquisition represents a major step forward in our strategy to establish a significant uranium portfolio in the Northern Territory and positions Greenvale as a dynamic uranium growth company"* – **Greenvale MD Alex Cheeseman**

Interactive Investor Hub - **Engage directly with the Company** through our Investor hub, you can ask questions, review comments and get direct access to the Company – follow the link [greenvaleenergy.com.au/announcements](https://greenvaleenergy.com.au/announcements)

Greenvale Energy Limited **ASX:GRV** (“Greenvale” or “the Company”) is pleased to announce that it has entered into a binding term sheet (subject to conditions) with Patronus Resources Ltd (ASX: PTN) to acquire the Uranium Rights<sup>1</sup> for the Pine Creek Uranium Project, located in the world-class Pine Creek Region in the Northern Territory.

The acquisition more than doubles Greenvale’s existing uranium tenure in the region, establishing a district-scale landholding covering a total of 2,466km<sup>2</sup> through the combination of the Pine Creek Project with Greenvale’s adjoining Douglas River Project (refer to Figure 1).

Importantly, the acquisition includes the high-grade Thunderball Uranium Deposit, along with an exceptional portfolio that includes multiple advanced uranium prospects and a pipeline of drill-ready targets along a highly prospective 10km-long corridor.

The transformational acquisition gives Greenvale an outstanding platform for resource growth and new uranium discoveries in one of Australia’s most proven uranium provinces, due to its unique combination of favourable geology, a long mineralising history and established uranium endowment.

The region hosts extensive Proterozoic-aged sedimentary and metamorphic rocks of the Pine Creek Orogen, which have undergone multiple tectonic and hydrothermal events that created pathways for uranium-bearing fluids and concentrated mineralisation.

The Pine Creek Orogen is proven as a uranium district through historical uranium operations and known, world-class deposits. Its prospectivity is further enhanced by widespread faulting, basement architecture and associated polymetallic mineral systems (including gold and base metals).

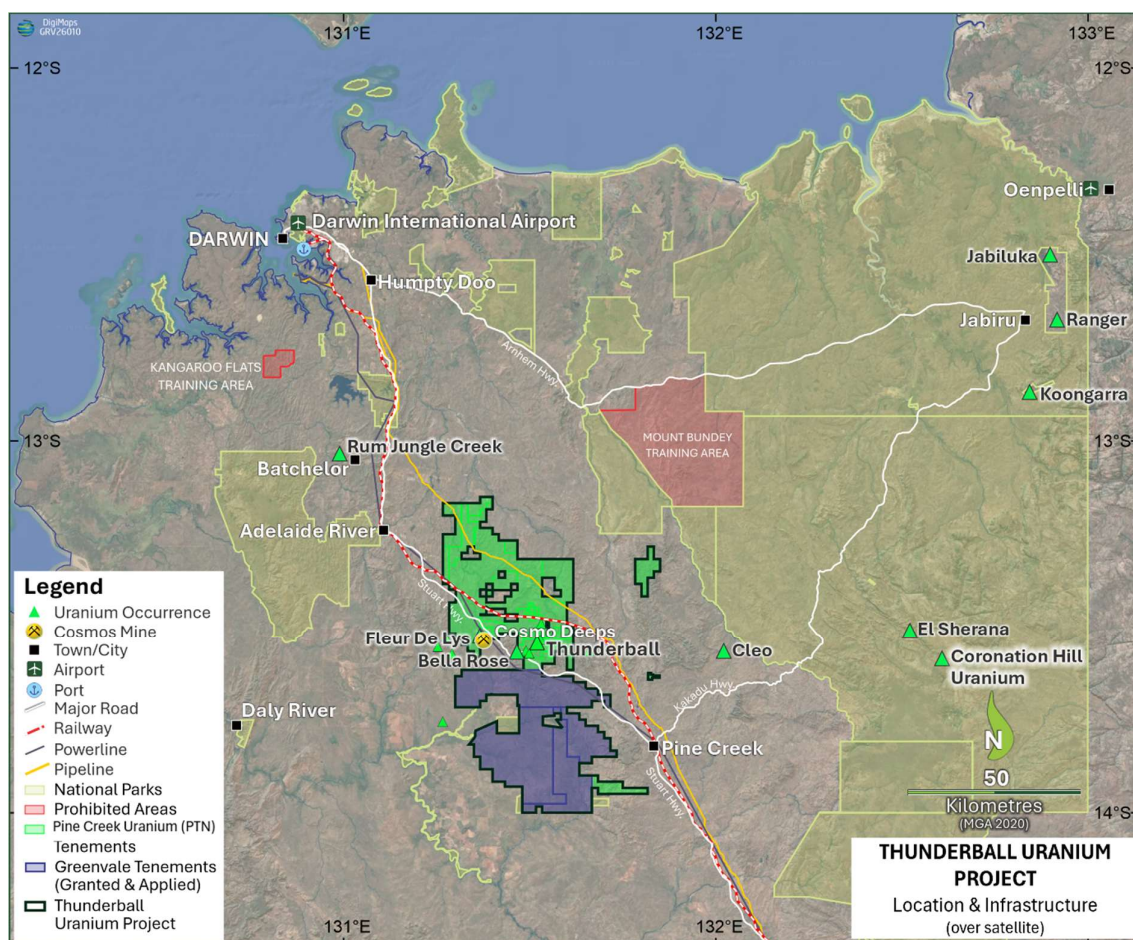
Despite this highly favourable structural and geological architecture and the region’s proven ability to host major uranium deposits, the areas covered by the Pine Creek Uranium Project and Douglas River Project remain relatively under-explored, highlighting exceptional potential for both near-surface and deeper discoveries at a time where global appetite for nuclear fuel supply continues to grow year-on-year.

Subject to satisfaction of the conditions, including the ASX determination of whether Chapter 11 of the Listing Rules applies, Greenvale intends to embark on an aggressive, multi-pronged exploration campaign – initially focused on the high-grade Thunderball Uranium Deposit with a view to upgrading it to a JORC (2012) Mineral Resource Estimate, while in parallel pursuing the large number of advanced targets located directly along strike and adjacent to Thunderball.

Most targets are situated along the highly prospective Hayes Creek Fault Zone, which extends south into Greenvale’s Douglas River Project (EL 34157). **Moving forward, the Company will refer to the combined Pine Creek Uranium/Douglas River Project area as the Thunderball Uranium Project.**

---

<sup>1</sup> Uranium Rights means the rights granted to Greenvale under the Terms Sheet and a Uranium Rights Agreement (execution of which is condition precedent) for 20 years (the Uranium Rights Term), whereby Patronus grants Greenvale the exclusive right to conduct exploration for Uranium on the Tenements, to use, copy and retain copies of historic exploration information in relation to previous uranium exploration, and subject to Greenvale releasing a future JORC Code compliant Feasibility Study demonstrating that the proposed project is economically viable, to allow Greenvale, in relation to any Tenement which is an exploration licence or exploration licence in retention, to apply for one or more mineral leases over the Tenements for development of Uranium projects on them; or subject to obtaining relevant Authorisations, to require Patronus to transfer any existing mineral lease (or subdivided area of such mineral lease) which is included in the Tenements free of Encumbrances to Greenvale, subject to the terms and conditions of the Uranium Rights Agreement.



**Figure1 – Pine Creek Uranium and Douglas River project areas combining to form the new Thunderball Uranium Project.**

**Greenvale Managing Director, Alex Cheeseman, said:**

*“This strategic acquisition represents a major step forward in our strategy to establish a significant uranium portfolio in the Northern Territory and positions Greenvale as a dynamic Australian uranium growth company.*

*“This is a logical and complementary growth step that adds significant weight to our existing uranium portfolio in the NT and Queensland. The Pine Creek Uranium Project brings the high-grade Thunderball Deposit into our portfolio together with a substantial pipeline of highly prospective exploration targets immediately adjacent to our existing Douglas River Project.*

*“Importantly, this consolidates Greenvale’s strategic position across a large and highly prospective corridor within the Pine Creek Region, allowing us to adopt a holistic exploration approach across a district-scale land package, with key geological structures traversing both the Pine Creek and Douglas River Projects. The district-scale exploration footprint we have established spans over 2,400km<sup>2</sup> and positions Greenvale as one of the dominant players in uranium exploration in the Northern Territory.*

*“With global uranium demand continuing to strengthen and governments around the world increasingly recognising the importance of nuclear energy for clean baseload power to support*

*global decarbonisation, we believe the Pine Creek region represents one Australia's most compelling uranium exploration and discovery opportunities.*

*"Importantly, once the conditions are satisfied, we can get on the ground straight away to commence exploration drilling, leveraging directly off the excellent foundational work undertaken by Patronus over the past year. As part of the transaction, Patronus will become our largest shareholder with an ≈19.6% stake, and a commitment to support our growth and development as an Australian uranium house. As part of this, we look forward to welcoming Patronus' Chairman, Rowan Johnston, who will join Greenvale's Board as a Non-Executive Director."*

### **The Pine Creek Uranium Project**

The Pine Creek Uranium Project is located approximately 200km southeast of Darwin, Northern Territory. The project is supported by excellent infrastructure and utilities including a major transmission line, the Darwin–Alice Springs railway, the Stuart Highway and multiple mining camps and logistics nodes both along and adjacent to the Stuart Highway.

The project is situated more than 30km west of, and well outside, the Kakadu National Park and over 15km east of the Litchfield National Park boundary. There are no other National Parks within the immediate vicinity of the project exploration/mining licences.

Geologically, the project is ideally positioned within the crystalline rocks of the polymetallic Pine Creek Orogen, known for its world-class, high-grade, unconformity and vein/intrusive-style, structurally controlled, uranium deposits and mines, such as Ranger, Jabiluka, Rum Jungle and Coronation Hill/El Sherana (refer to Figure 1).

Within the Pine Creek Uranium Project, additional regional prospects and target areas have already been identified outside of the main Thunderball Uranium Deposit (refer to Figure 2). When added to the existing target suite at the Douglas River Uranium Project, Greenvale now has a significant pipeline of exploration prospects ready for immediate advancement.

Figure 3 provides a close-up view of prospectivity at each area around the Thunderball deposit. The most promising targets are centred around the Hayes Creek Fault Zone and associated splays, together forming a major regional structural system known for its association with high-grade uranium deposits such as Thunderball, Bella Rose and Fleur de Lys.

The data packages accessible pursuant to the grant of Uranium Rights comprise various state and tenement-scale geophysical surveys (including airborne electromagnetics, magnetics, gravity and radiometrics), and comprehensive datasets of more than 40,000 surface samples and drillholes across the entire project area, covering all tenements in the package. This includes drilling data acquired by Thundelarra Exploration Ltd and Oz Uranium (Rockland Resources) at the Thunderball Uranium deposit.

From these datasets, 8,000 surface samples and 293 drillholes have associated uranium assays, with 64 surface samples and 111 drillholes returning assays greater than 100ppm U<sub>3</sub>O<sub>8</sub>. These regional scale results are significant as they highlight exploration prospects and target areas that remain untested for uranium potential. Figure 3 provides a summary of key historical exploration results at prospects proximal to the Thunderball Uranium Deposit.

**Technical Disclosure under Listing Rules 5.12.1** can be seen in full, commencing on page 12, Appendix 1 provides the full list of all drillholes (Table 1), associated uranium intercepts (Table 2) and surface samples (Table 3), that are situated within the immediate tenements of interest.

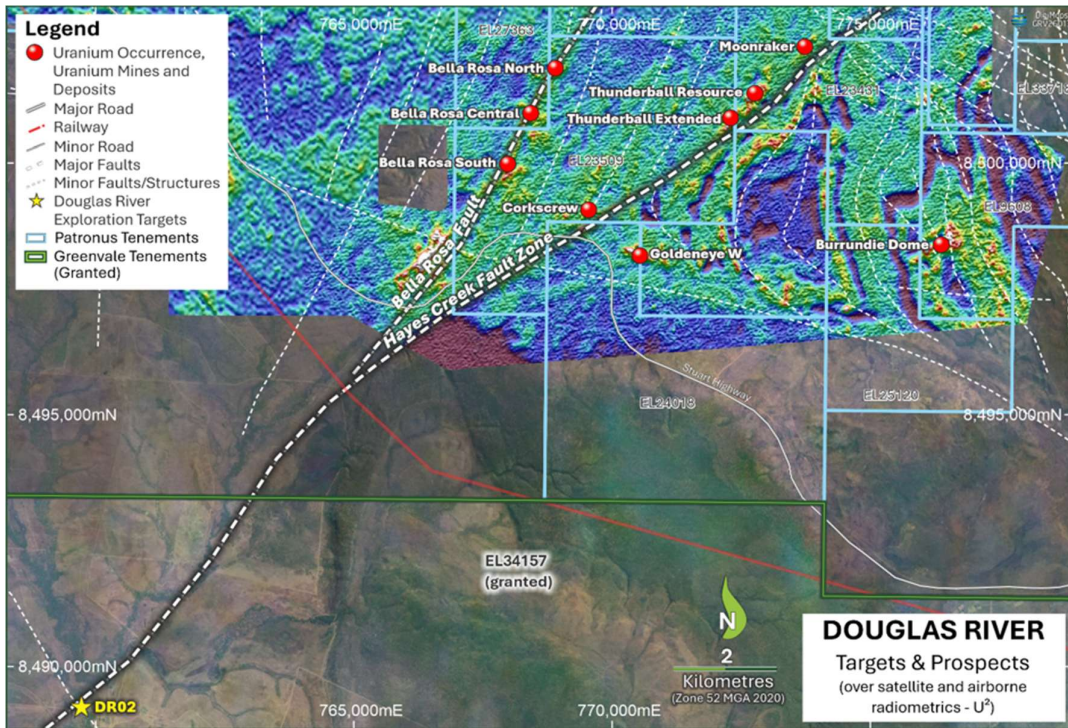


Figure 2 – Pre-defined exploration prospects surrounding the Thunderball Deposit.

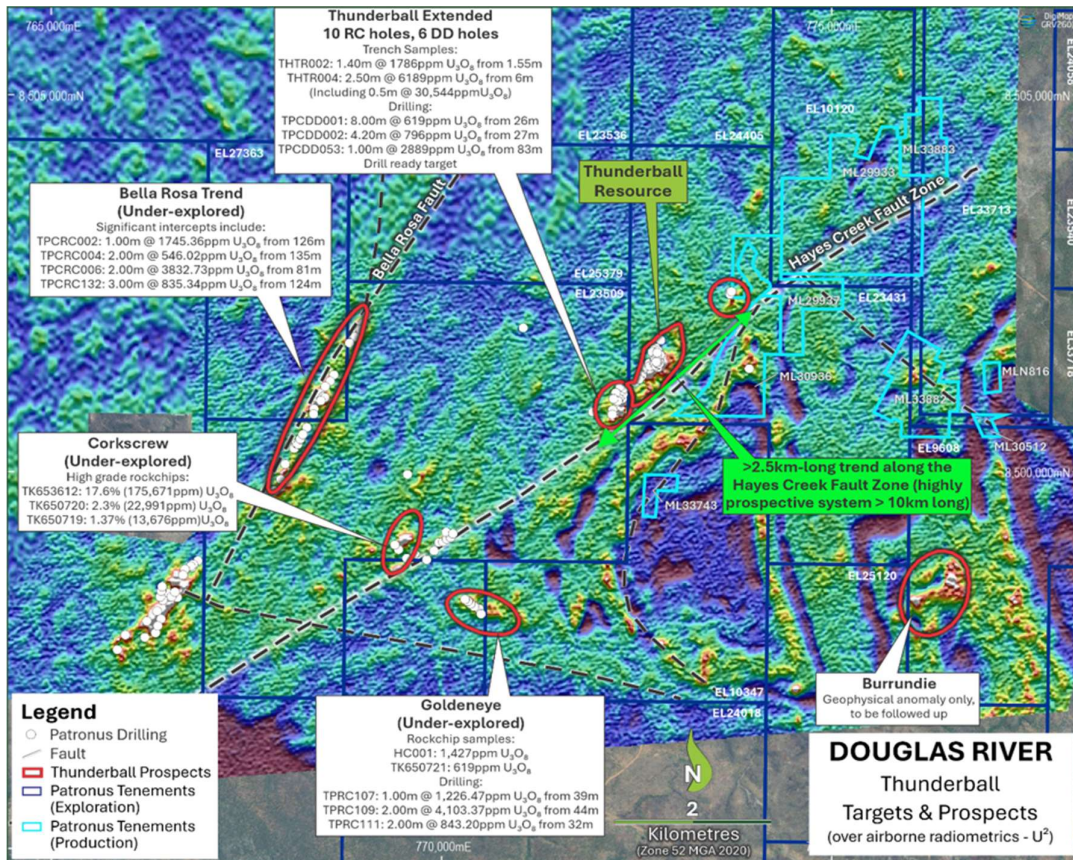


Figure 3 – Existing uranium prospects and exploration target areas, centred on the highly-prospective Hayes Creek Fault Zone.

## Thunderball Uranium Deposit

The Thunderball Uranium Deposit is hosted by volcanic- and siliciclastic, Palaeoproterozoic-aged metasediments. The predominant uranium mineral is uraninite, often appearing as poddy or nuggety mineralisation which appears to locally replace sulphides. Additional mineralisation comprises minor occurrences of brannerite and coffinite. Alteration in and around the mineralisation often comprises the haematite-limonite-illite clay “wormrock” alteration texture (Figure 4) typically seen in the high-grade unconformity deposits of the Athabasca Basin deposits, Canada.

The deposit itself consists of two mineralised lodes, being the Upper and Lower (Main) Lodes, dip between 35 and 40 degrees towards the northwest and are hosted within the cherts, sediments and volcanics of a portion of the South Alligator Group, consisting of the upper and lower Mount Bonnie and Gerowie Tuff. The Upper Lode is interpreted to be hosted predominantly by the sediment package of siltstones, carbonaceous shales, sandstones, and mudstones of the lower Mount Bonnie Formation, while the Lower Lode sits in the Gerowie Tuff.

Thunderball was discovered in 2008 by Thundelarra Exploration Ltd (Thundelarra<sup>2</sup>), following the identification of strong, uranium-channel anomalies from airborne radiometrics. Subsequent completion of 82 drillholes between 2008 and 2009, totaling 12,620 metres, resulted in the estimation of a historical inferred mineral resource, under the earlier JORC (2004) reporting code, of 829Kt @ 924 ppm U<sub>3</sub>O<sub>8</sub> for a total contained 1.69Mlb U<sub>3</sub>O<sub>8</sub><sup>2</sup>, using a cutoff of 400 ppm U<sub>3</sub>O<sub>8</sub>.

**Cautionary Statement:** The inferred mineral resource estimate reported here is entirely historic in nature and is neither compliant with, nor reported in accordance with the criteria specified in the JORC (2012) Code ('JORC Code'). The Competent Person has not done sufficient work to verify the historic estimate as a mineral resource estimate in accordance with JORC (2012). It is uncertain that following evaluation and/or further exploration work that the historical estimates will be able to be reported as mineral resources in accordance with the JORC Code. Further details can be found in the Cautionary Statement footnote below and in the detailed explanation sub-header 'Thunderball MRE and Exploration Results'.

In November 2011, Oz Uranium (wholly owned subsidiary of Rockland Resources (“Rockland”)) entered into a farm-in agreement with PNX Metals Ltd for the Thunderball Deposit and surrounding tenements. During their tenure, an additional 4 holes were drilled for a total of 733 metres. Rockland also completed disequilibrium and metallurgical studies in 2013 and 2014 with ANSTO Minerals, NSW.

The disequilibrium work confirmed that the Thunderball mineralisation is actually in secular equilibrium, which means that the uranium in the deposit has not moved on through natural radioactive decay. Consequently, any downhole gamma data collected for real-time

---

### <sup>2</sup> Cautionary Statement

The Thunderball Inferred MRE was previously reported by Thundelarra under the JORC Code 2004 to ASX on 7 February 2011, in an announcement titled "Thunderball Uranium Maiden JORC Resource". It is acknowledged that:

- the Inferred MRE has not been reported in accordance with the JORC Code 2012;
- a Competent Person has not done sufficient work to disclose the Inferred MRE in accordance with the JORC Code 2012;
- it is possible that following evaluation and/or further exploration work the currently reported estimates may materially change and hence will need to be reported afresh under and in accordance with the JORC Code 2012;
- after review of the original Thundelarra and PTN exploration results and Inferred MRE, nothing has come to the attention of Greenvale that causes it to question the accuracy or reliability of PTN reported exploration results or Thundelarra Inferred MRE for the Thunderball deposit; but
- Greenvale has not independently validated PTN's exploration results or Thundelarra's Inferred MRE and therefore is not to be regarded as reporting, adopting or endorsing those results or estimates.

radiometric assaying correlates well with the corresponding chemical assays from drill samples at the same depth.

This is a noteworthy technical development as it means that future resource estimations can utilise a larger proportion of downhole gamma assays, incorporating chemical assays for quality control and assurance purposes, which removes the sampling problems inherent with poddy or nuggety mineralisation.

Metallurgical testwork was completed involving running a series of diagnostic acid leach tests over a 24-hour period, at a temperature of 40°C, using sulphuric acid and hydrogen peroxide. The testwork yielded uranium extractions between 91% and 98%, with ores containing greater than 1% U<sub>3</sub>O<sub>8</sub> (10,000ppm) returning leach residue grades of more than 500ppm U<sub>3</sub>O<sub>8</sub>, indicating that optimisation of leach conditions for high-grade samples could further improve overall uranium extraction.

In 2023, uranium rights were returned to PNX Metals Ltd after the expiry of the 2011 farm-in agreement with Oz Uranium. Throughout 2024, PNX Metals Ltd merged with Kin Mining NL to form Patronus Resources Ltd ('Patronus'). Between 2024 and 2025, Patronus completed a deposit-wide re-assay program of selected Thundelarra drillholes, followed by a program of seven diamond core holes totaling 1,278 metres, targeting the Lower (Main) Lode at Thunderball.

The re-assay program confirmed<sup>3</sup> the tenor of several, ultra high-grade intersections, including:

- TPCDD026 with 10m @ 2.5% (25,000 ppm) U<sub>3</sub>O<sub>8</sub> from 145m, including 1m @ 16.7% (167,000 ppm) U<sub>3</sub>O<sub>8</sub> from 148m;
- TPCRD019 with 10m @ 1.2% (12,000 ppm) U<sub>3</sub>O<sub>8</sub> from 139m, including 1m @ 17.2% (172,000 ppm) U<sub>3</sub>O<sub>8</sub> from 139m; and
- TPCRD093 with 13m @ 0.7% (7,000 ppm) U<sub>3</sub>O<sub>8</sub> from 135m, including 0.50m @ 14.7% (147,000 ppm) U<sub>3</sub>O<sub>8</sub> from 146.5m.

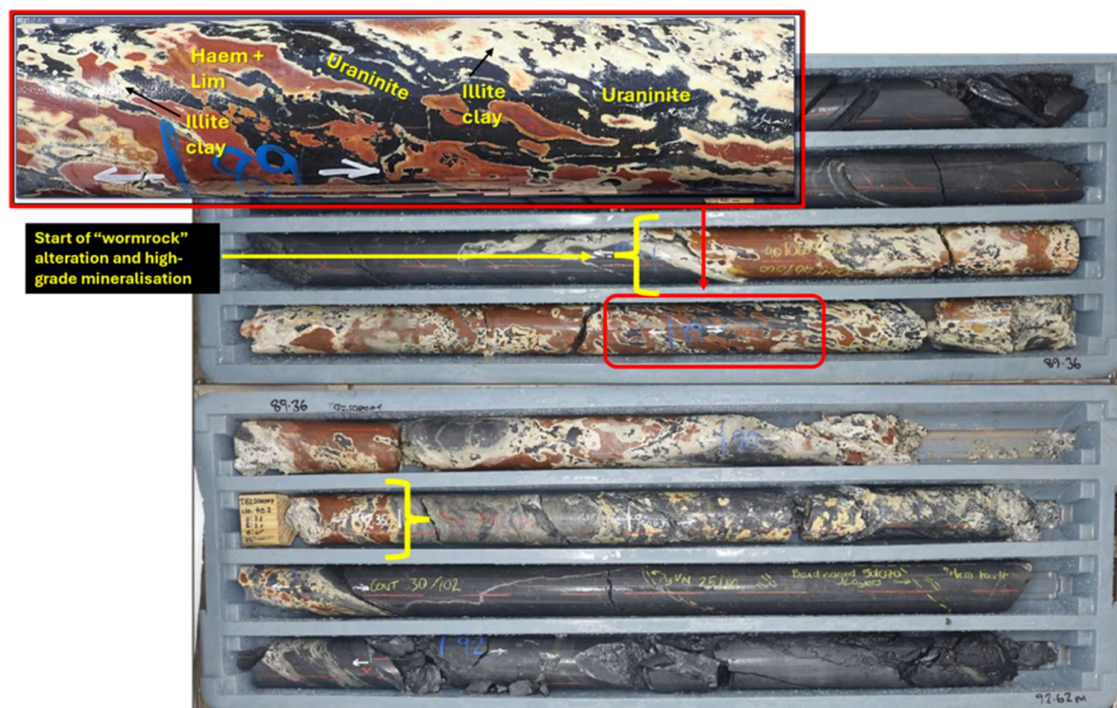
The seven-hole diamond drilling program further defined both mineralised lodes, upgraded the prospectivity for areas of extension down-dip of existing mineralisation and validated historic, high-grade uranium intercepts. The 2025 drilling returned the following stand-out high-grade uranium intercepts<sup>4</sup>:

- TB25DD002 with 0.60m @ 0.24% (2,444 ppm) U<sub>3</sub>O<sub>8</sub> from 183.4m;
- TB25DD003 with 1.80m @ 0.20% (1,999 ppm) U<sub>3</sub>O<sub>8</sub> from 74m;
- TB25DD004 with 8m @ 0.11% (1,085 ppm) U<sub>3</sub>O<sub>8</sub> from 73m; and 10m @ 2.95% (29,500 ppm) U<sub>3</sub>O<sub>8</sub> from 87m, including 3m @ 9.7% (97,000 ppm) @ U<sub>3</sub>O<sub>8</sub> from 88m, and 1m @ 2.18% (21,800 ppm) U<sub>3</sub>O<sub>8</sub> from 96.8m.

---

<sup>3</sup> Appendix 1 provides the full list of all drillholes (Table 1), associated uranium intercepts (Table 2) and surface samples (Table 3), that are situated within the immediate tenements of interest.

<sup>4</sup> Appendix 1 provides the full list of all drillholes (Table 1), associated uranium intercepts (Table 2) and surface samples (Table 3), that are situated within the immediate tenements of interest.



**Figure 4 – High-grade mineralisation (97,000 ppm  $U_3O_8$ ) and ‘wormrock’ alteration between 88 and 91m in hole TB25DD004.**

Subsequent geological reviews indicate that the Thunderball mineralisation may have formed as a result of the combined directional flow of oxidised brines circulating through the overlying sediments. Concurrently, there may have been ingress of uraniferous fluids (likely originating from the nearby Cullen Supersuite granites) up through structures such as the Hayes Creek Fault and related shears, into the South Alligator Group. The mineralisation appears to be replacing a previously existing massive sulphide lens, predominantly pyrite and thought to be VMS in origin, indicating that the method for exploration targeting in the area can incorporate techniques used for exploring for VMS type deposits.

#### **A Pipeline of Compelling Exploration Prospects and Target Areas along the Hayes Creek Fault Zone**

In addition to the Thunderball Deposit, there are currently six additional uranium prospects identified in the immediate region, including Thunderball Extended, Moonraker, Goldeneye, Corkscrew, the Bella Rosa Trend and Burrundie Dome (refer to Figure 3).

Thunderball Extended, Moonraker and Corkscrew are all situated along strike to the northeast and southwest of the Thunderball deposit, approximately 300–400m west of the main Hayes Creek Fault. This structure is interpreted to be one of two major fault-and-shear systems, the other being the Bella Rosa Fault approximately 4.5km to the west of Thunderball, with both systems potentially creating local drag folds in their immediate vicinity.

The Bella Rosa Trend is situated along the Bella Rosa Fault. The Corkscrew Prospect is also situated at the junction of a NE-SW striking transfer fault which appears to connect the Bella Rosa and Hayes Creek Fault systems. Similarly, the Goldeneye Prospect is situated on an east-northeast/west-southwest striking transfer fault to the east of the Hayes Creek fault.

The Hayes Creek Fault also continues further to the southwest into Greenvale's Douglas River Uranium Project, specifically the northernmost, recently granted<sup>5</sup>, exploration licence EL 34157.

In late 2025, Greenvale acquired tenement-scale multispectral data from the Sentinel-2 system which highlighted multiple helium and radon anomalies showing excellent correlation with both the position of the Hayes Creek Fault and subtle uranium anomalies in merged, state-wide, airborne radiometric datasets acquired from surveys flown at line spacings of between 200m and 4km. The Company is flying airborne geophysics across EL 34157 in June 2026.

**Thunderball Extended:** The Thunderball Extended Prospect is situated immediately to the southwest and along strike of the Thunderball Deposit, on a similar radiometric uranium anomaly with approximately 400m strike length, it straddles the contact between the Mt Bonnie Formation and Gerowie Tuff.

Historical exploration results include three surface samples<sup>6</sup>, collected between 2009 and 2025, a trenching program completed between 2008 and 2010, comprising four trenches for a total excavated length of 29.90m, and drilling incorporating 16 Reverse Circulation (RC) and five diamond core drillholes for a total combined 2,192 drill metres. Standout results<sup>7</sup> from trenching and drilling include:

- Trench THTR004 with 2.5m @ 0.6% (6,189 ppm) U<sub>3</sub>O<sub>8</sub> from 6m, including 0.50m @ 3% (30,544 ppm) U<sub>3</sub>O<sub>8</sub> from 6m;
- Drillhole TPCDD001 with 8m @ 0.06% (619 ppm) U<sub>3</sub>O<sub>8</sub> from 26m;
- Drillhole TPCDD002 with 4.2m @ 0.08% (796 ppm) U<sub>3</sub>O<sub>8</sub> from 27m; and
- Drillhole TPCRC053 with 1m @ 0.3% (2,889 ppm) U<sub>3</sub>O<sub>8</sub> from 83m.

There is an offset between the Thunderball and Thunderball Extended radiometric uranium anomalies, implying the presence of a northwest/north-northwest trending structure that separates the two areas. This structure may also have been responsible for producing the slight rotation of the Thunderball Extended anomaly as seen in Figure 5.

Between 2008 and 2009, Thundelarra drilled five drillholes (08PCRC029, TPCRC055, TPCRC056, TPCRC057 and TPCRC058) into this offset but clustered on the northeast edge, just to the southwest of the Thunderball resource. The offset therefore remains underexplored and prospective for further exploration.

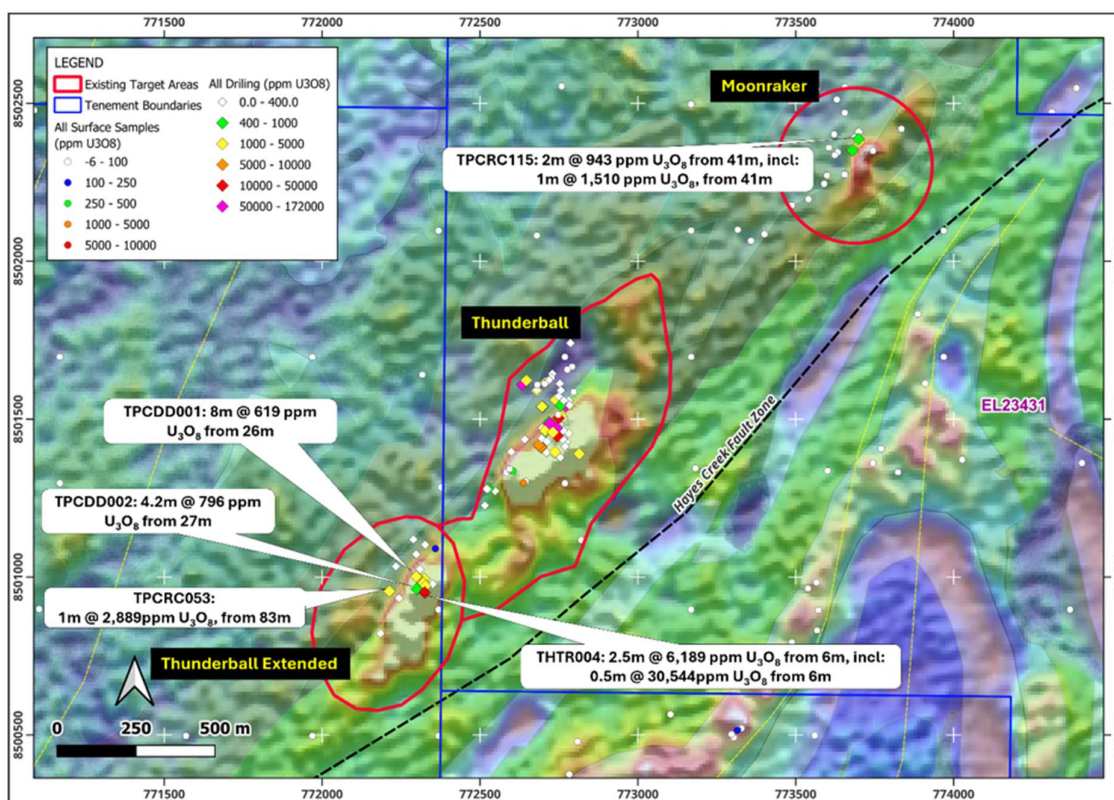
In 2024, PNX/Patronus were granted an Environmental Mining Licence (EML) for drilling at the Thunderball Deposit. This EML also covered drilling at Thunderball Extended with the initial objective to test extensions of the Thunderball and Thunderball Extended mineralisation envelope. In 2025, Patronus only drilled seven holes, all focussed on the Thunderball deposit only, Thunderball Extended remains drill-ready with approved drill holes under the current EML.

---

<sup>5</sup> Refer to ASX Announcement *Exploration Licence granted for Douglas River Uranium Project (NT) and new targets identified* released 26 February 2026

<sup>6</sup> Rockchips HC24AB028 with 131ppm U<sub>3</sub>O<sub>8</sub>, TK650713 with 8,147ppm U<sub>3</sub>O<sub>8</sub> and one lag sample 5ppm U<sub>3</sub>O<sub>8</sub>

<sup>7</sup> Appendix 1 provides the full list of all drillholes (Table 1), associated uranium intercepts (Table 2) and surface samples (Table 3), that are situated within the immediate tenements of interest.



**Figure 5 - Thunderball Trend: Thunderball Uranium Deposit with the Thunderball Extended (SW) and Moonraker (NE) Prospects aligned on the Hayes Creek Fault Zone.**

**Corkscrew** The Corkscrew Prospect is situated approximately 3km southwest of the Thunderball deposit, on a similar strong radiometric anomaly. Work completed to date includes rockchip samples collected in 2009, with significant assay results including TK650720 with 2.9% (22,991ppm) U<sub>3</sub>O<sub>8</sub> and TK650719 with 1.4% (13,676ppm) U<sub>3</sub>O<sub>8</sub><sup>8</sup>.

Between 2008 and 2011, Thundelarra completed 15 RC drill holes, for a total 1,907 metres. No intercepts were returned above the higher cutoff value of 400 ppm U<sub>3</sub>O<sub>8</sub>, however two drillholes returned mineralised intercepts above the lower cut-off value of 100 ppm U<sub>3</sub>O<sub>8</sub>, TPCRC024 with 1m @ 229ppm U<sub>3</sub>O<sub>8</sub> from 80m (no lithology log) and TPCRC078 with 1m @ 163ppm U<sub>3</sub>O<sub>8</sub> from 56m (logged as carbonaceous shale).

Drillhole TPCRC078 is located ~120m northeast, along strike of TPCRC024. Although the intercepts are low grade, they are still considered to be potentially indicative of thicker, higher-grade mineralisation and have been interpreted to have missed the radiometric anomaly at depth as well as the key lithological contact zone.

**Goldeneye** The Goldeneye Prospect is situated approximately 3–4km to the southwest and along strike from the Thunderball Deposit. The strong radiometric anomaly has been followed up with rock chip sampling, returning good indicative mineralisation. The rock chip sampling targeted discrete uranium-channel anomalies on the airborne radiometrics, similar to the Thunderball discovery. A total of six rock chip samples were collected in 2009, 2014 and 2024.

<sup>8</sup> Appendix 1 provides the full list of all drillholes (Table 1), associated uranium intercepts (Table 2) and surface samples (Table 3), that are situated within the immediate tenements of interest.

The best assay result was collected in 2014 and returned from sample HC0001 with 0.14% (1,427 ppm) U<sub>3</sub>O<sub>8</sub> in “radioactive, ferruginous, breccia zone”, and registering more than 3,000 counts per second (cps) on a handheld scintillometer.

Between 2008 and 2011, Thundelarra completed seven RC drillholes, for a total 511 metres, two drill holes intersected mineralisation<sup>9</sup>:

- TPCRC107 with 1m @ 0.12% (1,226 ppm) U<sub>3</sub>O<sub>8</sub> from 39m; and
- TPCRC109 with 6m @ 0.14% (1,441 ppm) U<sub>3</sub>O<sub>8</sub> from 44m, including 2m @ 0.4% (4,103 ppm) U<sub>3</sub>O<sub>8</sub> from 44m.

The Goldeneye radiometric anomaly also appears to be offset with the southeastern part of the anomaly rotated slightly to a more east-west orientation, however this area remains under-explored. Despite this, the encouraging results from the surface samples and drilling are all strong indicators that this prospect has further potential and warrants continued exploration.

**Moonraker** The Moonraker Prospect is situated on the northeastern part of the Thunderball trend, approximately 1.3km northeast of the Thunderball deposit. Historic exploration results include 18 rock chip samples collected by PNX Metals (later Patronus) between 2022 and 2025, on and around a strong radiometric anomaly which aligned with the Hayes Creek Fault Zone on a northeast-southwest strike (the same as Thunderball and Thunderball Extended). A total of five drillholes were completed by Thundelarra and Rockland in 2011 and 2014, notable intercepts include<sup>10</sup>:

- TPCRC115 with 2m @ 0.09% (943 ppm) U<sub>3</sub>O<sub>8</sub> from 41m, including 1m @ 0.15% (1,510 ppm) U<sub>3</sub>O<sub>8</sub> from 41m;
- TPCRC142 with 4m @ 0.51% (507 ppm) U<sub>3</sub>O<sub>8</sub> from 20m; and
- TPCRC143 with 1m @ 0.50% (502 ppm) U<sub>3</sub>O<sub>8</sub> from 45m.

In addition to the airborne radiometrics completed by previous operators, merged state-wide magnetics and gravity survey data also show the Thunderball, Thunderball Extended and Moonraker areas to be situated on the north and west edges of weak-to moderately magnetic and dense, but folded, feature. Geological mapping completed by various government, company and consultant survey programs have suggested that the Thunderball Deposit is situated on the western limb and/or in the nose of, a north-plunging anticlinal fold.

The magnetics data appear to support this interpretation, while the gravity data remain too coarse for sufficient resolution. Existing airborne electromagnetic (AEM) data completed in 2009 (the Rum Jungle AEM, Geoscience Australia, program) on a line spacing of 5km and infill of 1km line spacing, also shows a strong AEM anomaly within the core of this suggested folded feature, likely produced as a result of the graphitic siltstones and tuffs in the South Alligator Group.

The Moonraker Prospect remains relatively untested and warrants further exploration.

**Bella Rosa Trend** The Bella Rosa Trend is recognised as another major fault and shear zone, situated approximately 4.5km to the west of the Hayes Creek Fault Zone. The historic Bella Rose Uranium deposit is situated at the southwestern end of the system and just outside of the Pine Creek Uranium Project boundary.

The Bella Rosa Fault eventually appears to intersect with, and is quite likely to be a splay coming off the main Hayes Creek Fault.

---

<sup>9</sup> Appendix 1 provides the full list of all drillholes (Table 1), associated uranium intercepts (Table 2) and surface samples (Table 3), that are situated within the immediate tenements of interest.

<sup>10</sup> Appendix 1 provides the full list of all drillholes (Table 1), associated uranium intercepts (Table 2) and surface samples (Table 3), that are situated within the immediate tenements of interest.

Between 2009 and 2025, a total of nine surface samples, comprising seven rock chip and two lag samples, were collected from the Bella Rosa Trend by Thundelarra (2009 rock chips) and Patronus (2025 lag samples). Standout assay results were from rock chips TK650714 with 365 ppm  $U_3O_8$  and TK650715 with 336ppm  $U_3O_8$ . Both samples were located on the western side of a strong, radiometric anomaly that defines the ridge. No lithology descriptions were available in the database for these samples, however geological mapping in 2010 by Rockland Resources suggests that these samples may be from the Burrell Creek Formation metasediments, which forms part of the Cosmo Supergroup that hosts the Thunderball deposit.

Between 2008 and 2011, Thundelarra completed a total of 26 RC drillholes for a total of 4,038 metres into the Bella Rosa Trend. The drilling targeted the eastern edge of the Bella Rosa Fault, which forms a prominent north-northeast-south-southwest trending ridge. Highlight results include<sup>11</sup>:

- TPCRC089 with 1m @ 0.04% (419 ppm  $U_3O_8$ ) from 153m;
- TPCRC092 with 3m @ 0.02% (229 ppm  $U_3O_8$ ) from 103m;
- TPCRC130 with 3m @ 0.08% (894 ppm  $U_3O_8$ ) from 99m; and
- TPCRC132 with 2m @ 0.12% (1,175 ppm  $U_3O_8$ ) from 124m

Mineralisation in the highest-grade intercept, returned from hole TPCRC132, is hosted within weakly graphitic, sheared and variably haematized tuffaceous siltstones and mudstones, with the uraninite replacing sulphides.

#### **Listing Rule 5.12.1 - Sources of Thunderball MRE and Exploration Results**

The historical Thunderball mineral resource estimate (MRE) was completed by SRK Consulting (Australasia) Pty Ltd in 2011, using the RC and diamond core drilling that had been completed by Thundelarra Exploration ('Thundelarra') between 2008 and 2011. The Company notes the following:

- *The exploration results and estimate were reported by the former (in this case, the original) owner and not the ultimate acquirer of the uranium rights:*

The Thunderball Uranium Deposit (Thunderball) was first discovered by Thundelarra in 2008, following the identification of a prominent NE-SW radiometric uranium anomaly and subsequent drilling of the deposit between 2008 and 2011.

Thundelarra first reported the Thunderball historic MRE (completed by SRK Consulting (Australasia) Pty Ltd) in February 2011. The Exploration Results from the drilling completed at Thunderball, as reported in this announcement, have only been partially verified by Greenvale Energy.

- *The original source and date of reporting of the exploration results / mineral resource estimate:*

The historic Thunderball MRE was first reported to the market in the ASX Announcement dated 07 February 2011 by Thundelarra, titled "Thunderball Uranium Deposit Maiden Mineral Resource", and is a publicly available document. The subsequent Exploration Results at Thunderball, following the announcement of the 2011 MRE, were acquired by Rockland Resources which is listed on the Canadian Securities Exchange. These Exploration Results were, therefore, prepared and reported by Patronus Resources in 2025 in accordance with JORC (2012)

---

<sup>11</sup> Appendix 1 provides the full list of all drillholes (Table 1), associated uranium intercepts (Table 2) and surface samples (Table 3), that are situated within the immediate tenements of interest.

and released on 21 July 2025. Further drilling completed by Patronus in 2025, was reported later in October and November 2025, in accordance with JORC (2012).

For completeness, **all** drillholes (both historic and recent) and their respective intercepts have been reported here again within Appendix 1, Table 1 and Table 2, with dates of acquisition provided where that information was available.

The historical Thunderball MRE statement, which was reported under the previous JORC (2004) Code may not conform to the requirements of JORC (2012). Specifically, the poor use of QAQC samples in the Thundelarra drill campaigns is no longer acceptable in accordance with JORC (2012) Code criteria. The reporting of the additional Exploration Results at Thunderball plus new drilling completed by Patronus in 2025, was reported in October and November 2025, in accordance with JORC (2012).

- *Listing Rule 5.12.4: Reliability of the results/estimates, including by reference to any of the criteria in Table 1 of JORC (2012), which are relevant to understanding the reliability of results/estimates:*

Greenvale has not observed any issues or red flags in the drilling data or downhole gamma that cause it to question the accuracy or reliability of the reporting of the historic Thunderball MRE. However, the use of quality assurance and quality control (QAQC) by Thundelarra appears to have been poor and inconsistent, with only seven field duplicates and only four standard samples appear to have been included in a suite of 731 samples (SRK, 2011). Although it can differ depending on deposit and mineralisation style, general good practice for QAQC samples is to insert 1 in every 20 or 25 samples – e.g., 1 duplicate in every 25 samples, or 1 blank and 1 standard every 20 samples.

Future estimations will likely need to incorporate better use and assessment of geological models, significantly improved QAQC of chemical datasets using Company-specified sampling protocols, and onsite verification of underlying drill hole data sets.

- *Listing Rule 5.12.5: To the extent known, a summary of the work programs on which the results /estimates were based and, for estimates only, a summary of the key assumptions, mining and processing parameters and methods used to prepare the estimates:*

The historic Thunderball MRE was based on a dataset of 156 holes (mixed RC and diamond core) for a total 23,437 drill metres and all completed by Thundelarra Exploration between 2008 and 2011. Drill spacing was reported to be between 25 and 50m at surface but, with angled drillholes, this sample spacing broadens out at depth. All Thundelarra drillholes were geophysically logged by Borehole Wireline Services however this was not done immediately after the holes were drilled, allowing potential for radon gas to build up in the bottom of the drillholes (through natural radioactive decay) which can distort the gamma counts. Together with the lack of any disequilibrium studies, this made the downhole gamma data unreliable for resource estimation. The 3D wireframes for mineralisation had been modelled using Leapfrog and GOCAD Mining Software, using a lower grade cutoff of 100ppm for both downhole gamma and chemical assay data, however final reporting of tonnage and metal content used a lower grade cutoff of 400ppm. Regular block size of 5 x 5 x 2.5m was used in the X, Y and Z directions, respectively, and no sub blocking was deemed to be necessary. A top cut of 4,000ppm (0.4% U3O8) was used to exclude any extremely high-grade intercepts. A total 24 density measurements were collected, giving an overall density of 2.71 t/m<sup>3</sup>, which was considered reasonable for the metasediment packages hosting the Lower (Main) Lode of mineralisation. The resource report does not discuss any mining or processing parameters in the context of mineral extraction.

- *Listing Rule 5.12.6: Have any more recent results, estimates or data, which are relevant to the reported results/estimates, been made available to the Company?*

Since the initial reporting of the historic Thunderball MRE, a further 15 holes have been drilled by Rockland Resources (2014) and Patronus (2025) for a total additional 2,353 drill metres. These holes were drilled mostly as validation holes within the main Thunderball Deposit. The Patronus drilling was reported in accordance with JORC (2012) upon completion of the re-assaying program. It does not appear that the 8 Rockland holes were ever reported, they are provided in full at Appendix 1, Tables 1 and 2, in accordance with JORC (2012).

Additional work has been completed since the historic MRE, and which is relevant to any resource estimation process for Thunderball, is the completion of disequilibrium studies in 2013 by ANSTO and Rockland. The study found that the Thunderball uranium mineralisation is actually in secular equilibrium, meaning that there should be good correlation between any downhole gamma data and its corresponding chemical assay. This implies good reliability in downhole gamma as an assaying tool, increasing confidence in its use for mineral resource estimation, particularly for narrow-vein-style, nuggety and poddy-like mineralisation, such as that observed at Thunderball. It is Greenvale's intention that the next phase of work for the Thunderball Uranium Project will be drill testing of parts of the Thunderball Deposit, incorporating downhole gamma to test every drillhole, with a scintillometer and pXRF handheld spectrometer to get an indicative chemical test of uranium potential in all drill core.

- *Listing Rule 5.12.7: The evaluation and/or exploration work that needs to be completed to report the results/estimates in accordance with JORC 2012.*

Greenvale has begun to review and verify some of the historic Thunderball MRE, reviewing some of the MRE data and report, conducting a site visit in May 2026, reviewing drill core and RC chips, as well as reviewing the mineralisation styles, geological setting and alteration events within the area. Objectives for this work include building a 3D wireframe model of all veins, faults and shear networks to see what, if any, is the interaction between the structures and the uranium occurrences.

- *Listing Rule 5.12.8: The proposed timing of any evaluation and/or exploration work that the acquirer intends to undertake and a comment on how the acquirer intends to fund the work.*

Given the location of the Project and the naturally short length of any field season, subsequent evaluation work will require another program of drilling to be completed at Thunderball and is proposed to both infill and extend the existing mineralised envelope, both at depth and along strike. Greenvale has sufficient working capital to undertake initial exploration efforts and has a demonstrated ability to raise additional capital if required. The intention of this program is further update and grow the Thunderball Resource. It is currently proposed that Greenvale will be drilling consistently over a minimum period of three months, in order to further upgrade (likely late CY2026/early CY2027) the existing MRE and release it as a JORC (2012) compliant estimate.

- *A statement by a named Competent Person that the information in the market announcement provided is an accurate representation of the available data and studies for the Thunderball Uranium Deposit.*

The information in this announcement, as it relates to exploration results, interpretations and conclusions, is based on information reviewed by Ms Asha Rao who is General Manager of Exploration to Greenvale Energy Ltd and is a Member of both the Australasian Institute of Mining and Metallurgy (AusIMM, #228188) and the Australian Institute of Geoscientists (AIG, #6925). Ms Rao is a Consultant to the Company, and has sufficient experience that is relevant to the style of mineralisation and type of deposit under consideration, and to the overseeing of activities being undertaken to qualify as a Competent Person (as defined in the JORC 2012 edition of the

“Australasian Code for Reporting of Mineral Resources and Ore Reserves”. Ms Rao consents to the inclusion of this information in the form and context in which it appears.

### Uranium Rights Terms

**Grant of rights:** Patronus will, upon satisfaction of the conditions, grant exclusive uranium exploration and development rights over the tenements for up to 20 years.

Greenvale will have priority access for uranium exploration activities across the Thunderball Prospects until 31 December 2027. In all other cases, Patronus has priority in cases of conflicting exploration activities.

**Consideration:** Greenvale will provide Patronus with Consideration Shares as consideration for grant of the Uranium Rights for the Pine Creek Uranium Project. Subject to necessary approvals (including shareholder approval under the ASX Listing Rules), Greenvale will issue 144,736,842 ordinary shares to Patronus or its nominee, at an issue price of \$0.038, the total consideration being AUD\$5.5M.

The issue price is a 12% premium to the 10-day VWAP (\$0.034) and a 6% premium to the 30-day VWAP (\$0.036).

Based on the Greenvale capital structure on 6 June 2026, it is expected that Patronus will have a 19.6% shareholding interest in Greenvale once the Consideration Shares have been issued.

**Future Capital Support:** Under the terms of the binding terms sheet, for 24 months, the Company will, subject to the ASX Listing Rules, give Patronus a reasonable opportunity to participate pro rata in any proposed equity capital raising.

**Board Representation:** Under the terms of the binding term sheet, Patronus will have the right, but not the obligation, to nominate one person for appointment as a Non-Executive Director of Greenvale; the nomination right will continue until such time that Patronus’ voting power in Greenvale is less than 10% for two consecutive months.

Patronus have indicated in the first instance that they will propose Mr Rowan Johnston (Patronus Non-Executive Chair) as a Non-Executive Director of Greenvale. Mr Johnston is a mining engineer with over 40 years of experience in the resources industry, specialising in the gold sector. His expertise includes feasibility studies, company formations, construction, expansions, and mergers. Mr Johnston is well known to the Greenvale Board, who look forward to the opportunity to work with him going forward.

**Conditions:** Completion of the acquisition is subject to the satisfaction or waiver of various conditions, including:

- a. Completion of legal due diligence to Greenvale's satisfaction.
- b. Greenvale obtaining shareholder approval for the issue of Consideration Shares and any other approval required under the ASX Listing Rules;
- c. Patronus obtaining any approvals required under its agreements with third parties related to the tenements, and Greenvale entering any agreements with these third parties as conditions of their approvals;
- d. Greenvale and Patronus entering into a formal Uranium Rights Agreement incorporating the terms of the Term Sheet, before Greenvale's general meeting at which the abovementioned approvals are sought; and

- e. Greenvale obtaining all of the necessary statutory and regulatory authorisations, consents, permits and approvals.

### **Next Steps**

Until 31 July 2026, Greenvale has the right to conduct exploration activities on the project. The Thunderball Uranium Deposit sits within an approved EML licence, with 16 of the initial planned 23 drillholes from the 2025 season, still approved and available for immediate drilling.

Greenvale is in the process of planning a follow-up drilling program to continue testing the Thunderball Uranium Deposit for potential extensions down-plunge and down-dip, as well as along strike from the existing mineralised envelope. While the existing EML may need to be amended or an application for additional EML lodged, Greenvale has received advice that this is unlikely to be a prolonged process.

Alongside drilling at the Thunderball and Thunderball extended prospects, the Company will commence regional fieldwork across the other prospects and targets identified around the Thunderball Uranium Project. Work will include geological and structural mapping, and sampling to build on the historical exploration results. Stakeholder engagement will commence in June.

Concurrently, Greenvale's planned airborne magnetics-radiometrics program over EL 34157 is due to commence this week.

The issue of Consideration Shares is subject to shareholder approval which will be sought at an Extraordinary General Meeting expected to be held on or around late July 2026, further details to follow separately.

### **Authorised for release**

This announcement has been approved for release by the Board of Directors.

### **For further information please contact**

#### **Alex Cheeseman**

Managing Director

E: [admin@greenvaleenergy.com.au](mailto:admin@greenvaleenergy.com.au)

M: +61(0)485 603 120

#### **Nicholas Read**

Read Corporate

E: [nicholas@readcorporate.com.au](mailto:nicholas@readcorporate.com.au)

M: +61(0)419 929 046

### **About Greenvale Energy Limited**

Greenvale is an exploration company, committed to building a portfolio of projects to support the need for clean energy and critical infrastructure. With its exploration efforts leveraged to uranium, the Company is building a large land holding in the world-class Pine Creek region of the Northern Territory, and also owns the advanced, high-grade Oasis Uranium Project in Queensland. The Company has additional new-energy/forward facing projects including the strategically significant Alpha Project in Queensland where it seeks to become the only domestic supplier of bitumen into the multi-billion-dollar Australian market. Greenvale's projects are all aligned with the global need for reliable, sustainable, low-emissions energy and supply chains. The Company believes the best way to create long-term shareholder value is by investing in exploration, to make discoveries and grow its resource-base.

### **Forward Looking Statements**

This announcement may contain certain forward-looking statements and projections. Such forward looking statements/projections are estimates for discussion purposes only and should not be relied upon. Forward looking statements/projections are inherently uncertain and may therefore differ materially from results ultimately achieved. The Company does not make any representations and provides no warranties concerning the accuracy of the projections and disclaims any obligation to update or revise any forward-looking statements/projects based on new information, future events or otherwise except to the extent

## Greenvale Energy Limited ASX Release

required by applicable laws. While the information contained in this report has been prepared in good faith, neither the Company nor any of its directors, officers, agents, employees or advisors give any representation or warranty, express or implied, as to the fairness, accuracy, completeness or correctness of the information, opinions and conclusions contained in this announcement.

### **Competent Persons Statement**

The information in this announcement, as it relates to exploration results, interpretations and conclusions, is based on information reviewed by Ms Asha Rao who is General Manager of Exploration to Greenvale Energy Ltd and is a Member of both the Australasian Institute of Mining and Metallurgy (AusIMM, #228188) and the Australian Institute of Geoscientists (AIG, #6925). Ms Rao is a Consultant to the Company, and has sufficient experience that is relevant to the style of mineralisation and type of deposit under consideration, and to the overseeing of activities being undertaken to qualify as a Competent Person (as defined in the JORC 2012 edition of the “Australasian Code for Reporting of Mineral Resources and Ore Reserves”. Ms Rao consents to the inclusion of this information in the form and context in which it appears.

## Appendix 1

Table 1 – Thunderball Uranium Project – All Drillholes

(Coordinate system is GDA94, Zone 52. All drill collar coordinates have been surveyed by Differential GPS)

Drillhole ID	Drillhole Type	Total Depth (m)	East	North	RL	Azimuth (°)	Dip (°)	Date of Completion	Tenement	Prospect	Operating Company
08PCRC006	RC	70	766464.00	8498358.00	218.00	125.73	- 60.00			Bella Rosa	Thundelarra Exploration
08PCRC007	RC	60	766482.00	8498384.00	218.00	125.73	- 60.00			Bella Rosa	Thundelarra Exploration
08PCRC008	RC	70	766598.00	8498326.00	202.00	305.73	- 60.00			Bella Rosa	Thundelarra Exploration
08PCRC018	RC	61	772774.25	8501428.14	236.49	135.73	- 60.00	22/09/2008	EL23431	Thunderball	Thundelarra Exploration
08PCRC019	RC	100	772694.91	8501410.06	227.27	130.73	- 60.00	23/09/2008	EL23431	Thunderball	Thundelarra Exploration
08PCRC021	RC	100	772711.26	8501394.14	231.39	133.73	- 59.00	25/09/2008	EL23431	Thunderball	Thundelarra Exploration
08PCRC022	RC	103	772763.14	8501438.97	236.87	130.73	- 72.00	29/09/2008	EL23431	Thunderball	Thundelarra Exploration
08PCRC023	RC	142	772599.36	8501396.82	204.38	130.73	- 59.00	29/09/2008	EL23431	Thunderball	Thundelarra Exploration
08PCRC024	RC	109	772687.48	8501410.87	226.82	170.73	- 60.00	2/10/2008	EL23431	Thunderball	Thundelarra Exploration
08PCRC028	RC	112	772695.37	8501415.62	227.20	99.73	- 60.00	18/10/2008	EL23431	Thunderball	Thundelarra Exploration
08PCRC029	RC	100	772548.20	8501272.37	220.54	100.73	- 60.00			Thunderball Extended	Thundelarra Exploration
08PCRD020	RC_DDT	203	772693.38	8501411.52	227.22	132.73	- 72.00	2/10/2011	EL23431	Thunderball	Thundelarra Exploration
RHCDD001	DDH	74.7	770330.00	8498313.00	196.00	336.73	- 60.00			Golden Eye	Rockland Resources Ltd
RHCDD002	DDH	78.1	770413.00	8498190.00	196.00	336.73	- 60.00			Golden Eye	Rockland Resources Ltd
RHCDD003	DDH	99	770516.00	8498093.00	213.00	34.73	- 60.00			Golden Eye	Rockland Resources Ltd
RHCDD004	DDH	90	773700.00	8502410.00	150.00	116.73	- 55.00			Moonraker	Rockland Resources Ltd
RHCDD005	DDH	245.1	772634.47	8501609.13	214.65	131.73	- 50.00	24/07/2014	EL23431	Thunderball	Rockland Resources Ltd

Greenvale Energy Limited ASX Release

RHCDD006	DDH	179.5	772632.94	8501610.78	214.78	129.73	- 75.00	7/08/2014	EL23431	Thunderball	Rockland Resources Ltd
RHCDD007	DDH	150.1	772814.51	8501390.27	222.57	311.73	- 65.00	14/08/2014	EL23431	Thunderball	Rockland Resources Ltd
RHCDD008	DDH	158.7	772350.20	8500977.69	170.99	106.73	- 60.00			Thunderball Extended	Rockland Resources Ltd
TB25DD001	DDH	150	772762.46	8501435.54	236.08	153.50	- 55.00	18/07/2025	EL23431	Thunderball	Patronus Resources Ltd
TB25DD002	DDH	203.1	772697.64	8501539.38	224.53	143.09	- 72.53	24/07/2025	EL23431	Thunderball	Patronus Resources Ltd
TB25DD003	DDH	105.6	772696.66	8501539.39	224.61	80.77	- 59.86	27/07/2025	EL23431	Thunderball	Patronus Resources Ltd
TB25DD004	DDH	131	772697.38	8501539.83	224.59	30.77	- 64.84	30/07/2025	EL23431	Thunderball	Patronus Resources Ltd
TB25DD005	DDH	300	772698.27	8501539.61	224.62	324.90	- 84.41	6/08/2025	EL23431	Thunderball	Patronus Resources Ltd
TB25DD006	DDH	138.5	772648.19	8501620.53	215.38	115.39	- 51.07	9/08/2025	EL23431	Thunderball	Patronus Resources Ltd
TB25DD007	DDH	250	772647.10	8501622.76	215.62	164.99	- 50.73	15/08/2025	EL23431	Thunderball	Patronus Resources Ltd
THTR001	TRENCH	4.35	772323.00	8500995.00	183.00	101.73	0.00			Thunderball Extended	Thundelarra Exploration
THTR002	TRENCH	4.65	772321.00	8500981.00	183.00	126.73	0.00			Thunderball Extended	Thundelarra Exploration
THTR003	TRENCH	12.4	772327.00	8500972.00	185.00	271.73	18.00			Thunderball Extended	Thundelarra Exploration
THTR004	TRENCH	8.5	772325.00	8500951.00	186.00	268.73	25.00			Thunderball Extended	Thundelarra Exploration
TPCCC001	TRENCH	74.66	770072.00	8499165.00	220.50	296.73	5.00			Corkscrew	Thundelarra Exploration
TPCDD001	DDH	74.7	772299.67	8501001.44	181.83	95.73	- 55.00			Thunderball Extended	Thundelarra Exploration
TPCDD002	DDH	47.8	772298.45	8501001.65	181.94	91.73	- 64.00			Thunderball Extended	Thundelarra Exploration
TPCDD003	DDH	41.6	772300.47	8500962.57	189.23	96.73	- 60.00			Thunderball Extended	Thundelarra Exploration
TPCDD004	DDH	51.4	772299.47	8500962.76	189.32	96.73	- 85.00			Thunderball Extended	Thundelarra Exploration
TPCDD005	DDH	56.8	772309.81	8501024.78	192.82	80.73	- 80.00			Thunderball Extended	Thundelarra Exploration
TPCDD006	DDH	114.2	772687.37	8501417.91	226.56	98.73	- 70.00	1/01/2009	EL23431	Thunderball	Thundelarra Exploration
TPCDD026	DDH	174.83	772772.21	8501541.57	233.32	196.73	- 68.10	1/01/2009	EL23431	Thunderball	Thundelarra Exploration
TPCDD027	DDH	181.2	772718.11	8501490.24	227.08	308.73	- 85.00	1/01/2009	EL23431	Thunderball	Thundelarra Exploration

Greenvale Energy Limited ASX Release

TPCDD028	DDH	239.7	772697.30	8501539.48	225.07	129.73	- 70.00	1/01/2009	EL23431	Thunderball	Thundelarra Exploration
TPCDD029	DDH	201.67	772721.22	8501486.08	227.28	129.73	- 71.00	1/01/2009	EL23431	Thunderball	Thundelarra Exploration
TPCDD030	DDH	221.7	772696.93	8501539.76	225.03	121.73	- 85.00	1/01/2009	EL23431	Thunderball	Thundelarra Exploration
TPCDD031	DDH	233.8	772680.33	8501590.49	218.34	133.73	- 70.00	1/01/2009	EL23431	Thunderball	Thundelarra Exploration
TPCDD032	DDH	159.64	772739.85	8501464.66	232.85	154.73	- 70.00	1/01/2009	EL23431	Thunderball	Thundelarra Exploration
TPCDD033	DDH	122.48	772706.42	8501614.33	219.05	130.73	- 68.00	1/01/2009	EL23431	Thunderball	Thundelarra Exploration
TPCDD034	DDH	210.1	772781.07	8501559.84	233.20	188.73	- 67.00	1/01/2009	EL23431	Thunderball	Thundelarra Exploration
TPCDD138	DDH	182.7	772732.00	8501460.00	233.00	37.73	- 75.00	29/11/2010	EL23431	Thunderball	Thundelarra Exploration
TPCRC008	DDH	151	772707.62	8501462.80	225.79	130.73	- 70.00	14/09/2009	EL23431	Thunderball	Thundelarra Exploration
TPCRC009	DDH	151	772708.64	8501461.77	225.91	131.73	- 55.00	13/09/2009	EL23431	Thunderball	Thundelarra Exploration
TPCRC011	RC	163	772721.98	8501485.43	227.43	126.73	- 70.00	13/09/2009	EL23431	Thunderball	Thundelarra Exploration
TPCRC012	RC	115	772256.64	8500967.69	204.98	95.73	- 75.00			Thunderball Extended	Thundelarra Exploration
TPCRC013	RC	79	772243.68	8500933.07	198.19	110.73	- 60.00			Thunderball Extended	Thundelarra Exploration
TPCRC014	RC	121	772298.17	8501071.97	209.16	95.73	- 70.00			Thunderball Extended	Thundelarra Exploration
TPCRC015	RC	73	772326.56	8501102.32	209.91	95.73	- 60.00			Thunderball Extended	Thundelarra Exploration
TPCRC016	RC	67	772467.14	8501183.85	222.41	124.73	- 60.00			Thunderball Extended	Thundelarra Exploration
TPCRC017	RC	199	772766.74	8501500.88	234.51	130.73	- 65.00	1/01/2009	EL23431	Thunderball	Thundelarra Exploration
TPCRC020	RC	223	772764.17	8501503.46	234.33	126.73	- 85.00	14/09/2009	EL23431	Thunderball	Thundelarra Exploration
TPCRC021	RC	184	772757.79	8501509.56	234.03	310.73	- 85.00	15/09/2009	EL23431	Thunderball	Thundelarra Exploration
TPCRC022	RC	223	772757.46	8501509.91	234.11	310.73	- 75.00	8/10/2009	EL23431	Thunderball	Thundelarra Exploration
TPCRC023	RC	145	769433.00	8498962.00	214.00	50.73	- 65.00			Corkscrew	Thundelarra Exploration

Greenvale Energy Limited ASX Release

TPCRC024	RC	121	769537.00	8498846.00	220.00	95.73	-	60.00			Corkscrew	Thundelarra Exploration
TPCRC025	RC	109	769385.00	8499025.00	211.00	60.73	-	60.00			Corkscrew	Thundelarra Exploration
TPCRC035	RC	115	765828.00	8497635.00	146.00	120.73	-	60.00			Bella Rosa	Thundelarra Exploration
TPCRC036	RC	100	765930.00	8497830.00	152.00	116.73	-	60.00			Bella Rosa	Thundelarra Exploration
TPCRC037	RC	60	766318.00	8497857.00	136.00	296.73	-	60.00			Bella Rosa	Thundelarra Exploration
TPCRC038	RC	100	766338.00	8498144.00	163.00	120.73	-	60.00			Bella Rosa	Thundelarra Exploration
TPCRC039	RC	79	766180.00	8497798.00	163.00	117.63	-	59.70			Bella Rosa	Thundelarra Exploration
TPCRC040	RC	180	766207.00	8498015.00	175.00	116.73	-	60.00			Bella Rosa	Thundelarra Exploration
TPCRC041	RC	120	766388.00	8498041.00	142.00	296.73	-	60.00			Bella Rosa	Thundelarra Exploration
TPCRC042	RC	120	766347.00	8497951.00	138.00	296.73	-	60.00			Bella Rosa	Thundelarra Exploration
TPCRC043	RC	157	766414.00	8498293.00	222.00	120.73	-	60.00			Bella Rosa	Thundelarra Exploration
TPCRC044	RC	151	766378.00	8498335.00	222.00	126.73	-	75.00			Bella Rosa	Thundelarra Exploration
TPCRC045	RC	180	766392.00	8498413.00	230.00	120.73	-	60.00			Bella Rosa	Thundelarra Exploration
TPCRC046	RC	230	766403.00	8498472.00	230.00	90.73	-	60.00			Bella Rosa	Thundelarra Exploration
TPCRC047	RC	133	766523.00	8498338.00	218.00	120.73	-	60.00			Bella Rosa	Thundelarra Exploration
TPCRC048	RC	139	766567.00	8498400.00	214.00	86.73	-	60.00			Bella Rosa	Thundelarra Exploration
TPCRC050	RC	157	772781.26	8501455.30	235.90	0.00	-	90.00	22/05/2010	EL23431	Thunderball	Thundelarra Exploration
TPCRC051	RC	181	772763.89	8501463.81	236.17	0.00	-	90.00	22/05/2010	EL23431	Thunderball	Thundelarra Exploration
TPCRC053	RC	151	772212.93	8500955.24	205.67	96.73	-	60.00			Thunderball Extended	Thundelarra Exploration
TPCRC054	RC	133	772289.12	8501119.14	218.95	106.73	-	60.00			Thunderball Extended	Thundelarra Exploration
TPCRC055	RC	133	772526.65	8501279.88	217.64	84.73	-	60.00			Thunderball Extended	Thundelarra Exploration

Greenvale Energy Limited ASX Release

TPCRC056	RC	121	772525.39	8501277.96	217.73	103.03	-69.60			Thunderball Extended	Thundelarra Exploration
TPCRC057	RC	157	772521.54	8501279.11	217.77	0.00	-90.00			Thunderball Extended	Thundelarra Exploration
TPCRC058	RC	115	772515.65	8501226.73	226.22	112.73	-60.00			Thunderball Extended	Thundelarra Exploration
TPCRC059	RC	100	772510.87	8501228.96	226.14	0.00	-90.00			Thunderball Extended	Thundelarra Exploration
TPCRC060	RC	133	772191.21	8500740.02	198.12	106.73	-60.00	1/06/2010	EL23509	Thunderball	Thundelarra Exploration
TPCRC061	RC	141	772184.78	8500821.32	202.89	108.73	-60.00			Thunderball Extended	Thundelarra Exploration
TPCRC063	RC	241	772739.02	8501560.92	232.23	0.00	-90.00	13/07/2010	EL23431	Thunderball	Thundelarra Exploration
TPCRC066	RC	271	772753.16	8501612.54	232.68	0.00	-90.00	13/07/2010	EL23431	Thunderball	Thundelarra Exploration
TPCRC067	RC	276	772729.41	8501643.31	220.12	0.00	-90.00	25/06/2010	EL23431	Thunderball	Thundelarra Exploration
TPCRC068	RC	280	772706.68	8501611.82	219.23	0.00	-90.00	1/01/2010	EL23431	Thunderball	Thundelarra Exploration
TPCRC070	RC	133	769950.00	8499057.00	189.00	311.23	-60.60			Corkscrew	Thundelarra Exploration
TPCRC071	RC	133	770002.00	8499066.00	186.00	313.23	-60.60			Corkscrew	Thundelarra Exploration
TPCRC072	RC	133	770050.00	8499102.00	190.00	317.23	-59.80			Corkscrew	Thundelarra Exploration
TPCRC073	RC	157	770099.00	8499123.00	190.00	315.73	-59.90			Corkscrew	Thundelarra Exploration
TPCRC074	RC	127	770042.00	8499195.00	212.00	134.83	-59.50			Corkscrew	Thundelarra Exploration
TPCRC075	RC	100	770129.00	8499174.00	207.00	309.33	-59.50			Corkscrew	Thundelarra Exploration
TPCRC076	RC	157	769887.00	8498946.00	176.00	309.83	-60.30			Corkscrew	Thundelarra Exploration
TPCRC077	RC	199	769792.00	8498828.00	192.00	309.93	-59.90			Corkscrew	Thundelarra Exploration
TPCRC078	RC	139	769638.00	8498909.00	210.00	137.73	-59.10			Corkscrew	Thundelarra Exploration
TPCRC079	RC	103	769450.00	8498714.00	208.00	311.33	-59.30			Corkscrew	Thundelarra Exploration
TPCRC080	RC	151	769525.00	8498842.00	216.00	165.73	-59.60			Corkscrew	Thundelarra Exploration

Greenvale Energy Limited ASX Release

TPCRC081	RC	139	769025.00	8502071.00	165.00	297.33	-			Bella Rosa Fault North	Thundelarra Exploration
TPCRC082	RC	151	768977.00	8501968.00	149.00	296.73	-			Bella Rosa Fault North	Thundelarra Exploration
TPCRC083	RC	151	768943.00	8501881.00	160.00	297.93	-			Bella Rosa Fault North	Thundelarra Exploration
TPCRC084	RC	169	768877.00	8501787.00	161.00	298.43	-			Bella Rosa Fault North	Thundelarra Exploration
TPCRC085	RC	145	768804.00	8501704.00	174.00	296.73	-			Bella Rosa Fault North	Thundelarra Exploration
TPCRC086	RC	139	768604.00	8501282.00	229.00	296.73	-			Bella Rosa Fault North	Thundelarra Exploration
TPCRC087	RC	139	768556.00	8501197.00	229.00	296.73	-			Bella Rosa Fault North	Thundelarra Exploration
TPCRC088	RC	151	768493.00	8501127.00	229.00	300.73	-			Bella Rosa Fault North	Thundelarra Exploration
TPCRC089	RC	193	768473.00	8500989.00	158.00	302.43	-			Bella Rosa Fault North	Thundelarra Exploration
TPCRC090	RC	175	768467.00	8500994.00	158.00	300.43	-			Bella Rosa Fault North	Thundelarra Exploration
TPCRC091	RC	151	768489.00	8500980.00	157.00	296.73	-			Bella Rosa Fault North	Thundelarra Exploration
TPCRC092	RC	193	768437.00	8500939.00	161.00	256.73	-			Bella Rosa Fault North	Thundelarra Exploration
TPCRC095	RC	260	772680.29	8501592.12	218.41	0.00	-	3/08/2010	EL23431	Thunderball	Thundelarra Exploration
TPCRC096	RC	223	772756.00	8501544.00	234.00	0.00	-	3/08/2010	EL23431	Thunderball	Thundelarra Exploration
TPCRC097	RC	228	772749.46	8501572.24	232.56	0.00	-	27/08/2011	EL23431	Thunderball	Thundelarra Exploration
TPCRC098	RC	97	772765.97	8501559.22	233.51	0.00	-	28/07/2010	EL23431	Thunderball	Thundelarra Exploration
TPCRC099	RC	91	772756.53	8501591.15	232.54	0.00	-	28/07/2010	EL23431	Thunderball	Thundelarra Exploration
TPCRC100	RC	164	772696.20	8501438.93	226.01	0.00	-	30/07/2010	EL23431	Thunderball	Thundelarra Exploration
TPCRC101	RC	190	772697.33	8501471.38	224.29	0.00	-	1/08/2010	EL23431	Thunderball	Thundelarra Exploration
TPCRC102	RC	287	772786.59	8501741.04	232.21	125.73	-	4/08/2010	EL23431	Thunderball	Thundelarra Exploration
TPCRC103	RC	164	772233.55	8501033.79	217.91	0.00	-			Thunderball Extended	Thundelarra Exploration

Greenvale Energy Limited ASX Release

TPCRC104	RC	181	766678.00	8498621.00	205.00	120.73	-60.00			Bella Rosa	Thundelarra Exploration
TPCRC105	RC	151	766786.00	8498729.00	223.00	120.73	-60.00			Bella Rosa	Thundelarra Exploration
TPCRC106	RC	175	766785.50	8498729.50	223.00	120.73	-70.00			Bella Rosa	Thundelarra Exploration
TPCRC107	RC	73	770406.00	8498212.00	196.00	24.73	-60.00			Golden Eye	Thundelarra Exploration
TPCRC108	RC	79	770463.00	8498179.00	198.00	30.73	-60.00			Golden Eye	Thundelarra Exploration
TPCRC109	RC	79	770403.00	8498205.00	196.00	0.00	-90.00			Golden Eye	Thundelarra Exploration
TPCRC110	RC	79	770355.00	8498242.00	195.00	31.73	-60.00			Golden Eye	Thundelarra Exploration
TPCRC111	RC	61	770325.00	8498282.00	191.00	31.73	-60.00			Golden Eye	Thundelarra Exploration
TPCRC112	RC	61	770321.00	8498275.00	191.00	0.00	-90.00			Golden Eye	Thundelarra Exploration
TPCRC113	RC	79	770283.00	8498302.00	191.00	30.73	-60.00			Golden Eye	Thundelarra Exploration
TPCRC115	RC	79	773701.00	8502378.00	150.00	117.73	-60.00			Moonraker	Thundelarra Exploration
TPCRC118	RC	150	767842.00	8499745.00	218.00	118.73	-60.00			Bella Rosa Fault North	Thundelarra Exploration
TPCRC119	RC	220	767922.00	8499893.00	217.00	122.73	-60.00			Bella Rosa Fault North	Thundelarra Exploration
TPCRC120	RC	120	767981.00	8500097.00	223.00	119.73	-60.00			Bella Rosa Fault North	Thundelarra Exploration
TPCRC121	RC	180	768348.00	8500830.00	228.00	300.73	-60.00			Bella Rosa Fault North	Thundelarra Exploration
TPCRC122	RC	220	771943.00	8500779.00	154.00	110.73	-60.00	19/10/2010	EL23509	Thunderball	Thundelarra Exploration
TPCRC123	RC	120	772211.00	8500956.00	206.00	101.73	-75.00			Thunderball Extended	Thundelarra Exploration
TPCRC124	RC	180	766860.00	8498814.00	224.00	120.73	-60.00			Bella Rosa	Thundelarra Exploration
TPCRC125	RC	180	766801.00	8498767.00	221.00	120.73	-60.00			Bella Rosa	Thundelarra Exploration
TPCRC126	RC	180	766769.00	8498742.00	224.00	120.73	-72.00			Bella Rosa	Thundelarra Exploration
TPCRC127	RC	198	766698.00	8498698.00	220.00	120.73	-60.00			Bella Rosa	Thundelarra Exploration

Greenvale Energy Limited ASX Release

TPCRC128	RC	192	768343.00	8500760.00	231.00	300.73	-60.00			Bella Rosa Fault North	Thundelarra Exploration
TPCRC129	RC	220	768257.00	8500583.00	232.00	300.73	-60.00			Bella Rosa Fault North	Thundelarra Exploration
TPCRC130	RC	120	768100.00	8500300.00	222.00	120.73	-60.00			Bella Rosa Fault North	Thundelarra Exploration
TPCRC131	RC	150	768094.00	8500305.00	222.00	120.73	-66.00			Bella Rosa Fault North	Thundelarra Exploration
TPCRC132	RC	150	768123.00	8500370.00	230.00	120.73	-60.00			Bella Rosa Fault North	Thundelarra Exploration
TPCRC133	RC	220	768121.00	8500371.00	230.00	120.73	-70.00			Bella Rosa Fault North	Thundelarra Exploration
TPCRC134	RC	126	768140.00	8500360.00	230.00	120.73	-60.00			Bella Rosa Fault North	Thundelarra Exploration
TPCRC135	RC	102	768174.00	8500429.00	230.00	120.73	-60.00			Bella Rosa Fault North	Thundelarra Exploration
TPCRC136	RC	114	768173.00	8500430.00	230.00	120.73	-70.00			Bella Rosa Fault North	Thundelarra Exploration
TPCRC137	RC	78	768206.00	8500491.00	227.00	120.73	-60.00			Bella Rosa Fault North	Thundelarra Exploration
TPCRC140	RC	259	772784.00	8501544.00	233.00	0.00	-90.00	6/07/2011	EL23431	Thunderball	Thundelarra Exploration
TPCRC141	RC	180	773686.00	8502391.00	153.00	226.73	-60.00	9/07/2011		Moonraker	Thundelarra Exploration
TPCRC142	RC	217	773680.00	8502351.00	152.00	184.73	-60.00	10/07/2011		Moonraker	Thundelarra Exploration
TPCRC143	RC	132	773699.00	8502387.00	150.00	117.73	-70.00	11/07/2011		Moonraker	Thundelarra Exploration
TPCRC144	RC	84	769547.00	8499961.00	156.00	86.73	-60.00			Hayes Creek	Thundelarra Exploration
TPCRC145	RC	270	772735.00	8501391.00	233.00	172.73	-60.00	14/07/2011	EL23431	Thunderball	Thundelarra Exploration
TPCRC146	RC	198	766695.00	8498701.00	220.00	94.73	-60.00			Bella Rosa	Thundelarra Exploration
TPCRC147	RC	192	766672.00	8498624.00	205.00	89.73	-60.00			Bella Rosa	Thundelarra Exploration
TPCRD007	RC_DDT	359.5	772642.25	8501435.80	210.91	105.73	-70.00	26/09/2011	EL23431	Thunderball	Thundelarra Exploration
TPCRD010	RC_DDT	309	772706.59	8501463.85	225.51	130.73	-85.00	8/10/2011	EL23431	Thunderball	Thundelarra Exploration
TPCRD018	RC_DDT	147.4	772652.41	8501396.52	217.77	131.73	-70.00	16/09/2011	EL23431	Thunderball	Thundelarra Exploration

Greenvale Energy Limited ASX Release

TPCRD019	RC_DDT	330	772720.70	8501486.49	227.17	125.73	- 85.00	16/10/2011	EL23431	Thunderball	Thundelarra Exploration
TPCRD049	RC_DDT	131.1	772712.12	8501429.14	229.81	0.00	- 90.00	2/06/2010	EL23431	Thunderball	Thundelarra Exploration
TPCRD052	RC_DDT	111.7	772754.27	8501378.32	228.17	0.00	- 90.00	23/05/2010	EL23431	Thunderball	Thundelarra Exploration
TPCRD062	RC_DDT	120.8	772737.92	8501396.12	232.68	0.00	- 90.00	1/01/2010	EL23431	Thunderball	Thundelarra Exploration
TPCRD064	RC_DDT	130	772769.68	8501413.71	234.35	0.00	- 90.00	1/01/2010	EL23431	Thunderball	Thundelarra Exploration
TPCRD065	RC_DDT	27	772744.14	8501445.07	234.76	0.00	- 90.00	5/06/2010	EL23431	Thunderball	Thundelarra Exploration
TPCRD065B	RC_DDT	154.35	772745.09	8501446.51	234.77	0.00	- 90.00	5/06/2010	EL23431	Thunderball	Thundelarra Exploration
TPCRD069	RC_DDT	181.7	772748.48	8501503.07	233.39	0.00	- 90.00	1/01/2010	EL23431	Thunderball	Thundelarra Exploration
TPCRD093	RC_DDT	172.9	772743.49	8501471.64	232.96	0.00	- 90.00	1/01/2010	EL23431	Thunderball	Thundelarra Exploration
TPCRD094	RC_DDT	158.8	772730.80	8501458.19	232.45	0.00	- 90.00	1/01/2010	EL23431	Thunderball	Thundelarra Exploration
YCTR001	TRENCH	7	771030.00	8501905.00	100.00	270.73	0.00	1/01/2010		Hayes Creek	Thundelarra Exploration

**Table 2 – Thunderball Uranium Project: All Drilling Intercepts above a lower cutoff of 100 ppm U<sub>3</sub>O<sub>8</sub>.**

Minimum Intercept Width 0.30m, maximum Internal Waste 2m

Hole ID	Depth From (m)	Depth To (m)	Interval Thickness (m)	Grade (ppm U3O8)	Intercept Description	Lower Cutoff Value (ppm U3O8)
08PCRC007	10.00	12.00	2.00	144.46	2.00m @ 144.46 ppm	100
08PCRC019	77.00	86.00	9.00	640.06	9.00m @ 640.06 ppm	100
08PCRC019	78.00	79.00	1.00	1951.74	1.00m @ 1951.74 ppm	400
08PCRC019	83.00	85.00	2.00	1319.05	2.00m @ 1319.05 ppm	400
08PCRC021	49.00	50.00	1.00	137.98	1.00m @ 137.98 ppm	100
08PCRC024	76.00	79.00	3.00	106.14	3.00m @ 106.14 ppm	100
08PCRC029	66.00	70.00	4.00	157.73	4.00m @ 157.73 ppm	100
08PCRD020	86.00	89.00	3.00	2966.33	3.00m @ 2966.33 ppm	100
08PCRD020	86.00	88.00	2.00	4260.81	2.00m @ 4260.81 ppm	400
08PCRD020	97.00	108.00	11.00	105.92	11.00m @ 105.92 ppm	100
RHCDD002	34.00	35.00	1.00	100.48	1.00m @ 100.48 ppm	100
RHCDD005	104.90	112.85	7.95	1659.11	7.95m @ 1659.11 ppm	100
RHCDD005	106.93	112.85	5.92	2112.10	5.92m @ 2112.10 ppm	400
RHCDD005	206.85	212.20	5.35	789.41	5.35m @ 789.41 ppm	100
RHCDD005	210.00	210.93	0.93	3890.55	0.93m @ 3890.55 ppm	400
RHCDD005	215.00	225.00	10.00	18886.56	10.00m @ 18886.56 ppm	100
RHCDD005	215.00	217.75	2.75	54677.80	2.75m @ 54677.80 ppm	400
RHCDD005	219.90	224.10	4.20	8985.70	4.20m @ 8985.70 ppm	400
RHCDD007	106.60	108.60	2.00	371.48	2.00m @ 371.48 ppm	100
RHCDD007	106.60	107.60	1.00	615.59	1.00m @ 615.59 ppm	400
RHCDD007	111.00	112.00	1.00	143.87	1.00m @ 143.87 ppm	100
RHCDD007	116.40	126.00	9.60	415.05	9.60m @ 415.05 ppm	100
RHCDD007	117.10	121.00	3.90	845.40	3.90m @ 845.40 ppm	400
TB25DD002	159.80	160.22	0.42	918.15	0.42m @ 918.15 ppm	100

Greenvale Energy Limited ASX Release

TB25DD002	159.80	160.22	0.42	918.15	0.42m @ 918.15 ppm	400
TB25DD002	183.40	187.00	3.60	482.82	3.60m @ 482.82 ppm	100
TB25DD002	183.40	184.00	0.60	2444.80	0.60m @ 2444.80 ppm	400
TB25DD003	25.82	26.47	0.65	103.02	0.65m @ 103.02 ppm	100
TB25DD003	45.00	52.00	7.00	131.67	7.00m @ 131.67 ppm	100
TB25DD003	70.05	75.80	5.75	722.44	5.75m @ 722.44 ppm	100
TB25DD003	74.00	75.80	1.80	1999.09	1.80m @ 1999.09 ppm	400
TB25DD004	64.00	65.76	1.76	215.19	1.76m @ 215.19 ppm	100
TB25DD004	65.46	65.76	0.30	533.10	0.30m @ 533.10 ppm	400
TB25DD004	69.15	93.00	23.85	9852.10	23.85m @ 9852.10 ppm with 0.47m NULL grade interval	100
TB25DD004	73.00	81.00	8.00	1085.42	8.00m @ 1085.42 ppm	400
TB25DD004	87.00	93.00	6.00	37358.74	6.00m @ 37358.74 ppm with 0.37m NULL grade interval	400
TB25DD004	96.76	100.00	3.24	6826.54	3.24m @ 6826.54 ppm	100
TB25DD004	96.76	97.76	1.00	21759.26	1.00m @ 21759.26 ppm	400
TB25DD005	55.93	57.00	1.07	132.05	1.07m @ 132.05 ppm	100
TB25DD005	60.00	71.20	11.20	147.24	11.20m @ 147.24 ppm	100
TB25DD005	78.00	92.00	14.00	141.11	14.00m @ 141.11 ppm	100
TB25DD005	91.00	92.00	1.00	509.46	1.00m @ 509.46 ppm	400
TB25DD006	102.00	102.91	0.91	155.14	0.91m @ 155.14 ppm	100
TB25DD006	111.50	114.25	2.75	134.34	2.75m @ 134.34 ppm	100
TB25DD006	118.23	120.55	2.32	264.80	2.32m @ 264.80 ppm	100
TB25DD007	117.78	124.36	6.58	106.82	6.58m @ 106.82 ppm	100
TB25DD007	128.00	132.20	4.20	456.28	4.20m @ 456.28 ppm	100
TB25DD007	128.00	132.20	4.20	456.28	4.20m @ 456.28 ppm	400
THTR001	0.00	4.35	4.35	670.98	4.35m @ 670.98 ppm	100
THTR001	1.20	4.35	3.15	846.48	3.15m @ 846.48 ppm	400
THTR002	0.00	4.65	4.65	647.73	4.65m @ 647.73 ppm	100

Greenvale Energy Limited ASX Release

THTR002	1.55	2.95	1.40	1786.22	1.40m @ 1786.22 ppm	400
THTR003	3.00	5.40	2.40	453.54	2.40m @ 453.54 ppm	100
THTR003	5.00	5.40	0.40	1851.50	0.40m @ 1851.50 ppm	400
THTR004	6.00	8.50	2.50	6188.97	2.50m @ 6188.97 ppm	100
THTR004	6.00	6.50	0.50	30543.87	0.50m @ 30543.87 ppm	400
TPCCC001	8.00	12.00	4.00	120.88	4.00m @ 120.88 ppm	100
TPCDD001	22.00	36.00	14.00	440.68	14.00m @ 440.68 ppm with 0.60m missing interval	100
TPCDD001	26.00	34.00	8.00	618.91	8.00m @ 618.91 ppm	400
TPCDD002	27.00	37.00	10.00	485.16	10.00m @ 485.16 ppm	100
TPCDD002	27.00	31.20	4.20	795.75	4.20m @ 795.75 ppm	400
TPCDD002	34.00	35.00	1.00	424.55	1.00m @ 424.55 ppm	400
TPCDD003	14.00	24.00	10.00	189.81	10.00m @ 189.81 ppm	100
TPCDD003	17.90	18.30	0.40	1138.02	0.40m @ 1138.02 ppm	400
TPCDD004	26.00	39.00	13.00	272.06	13.00m @ 272.06 ppm	100
TPCDD004	27.00	28.00	1.00	442.24	1.00m @ 442.24 ppm	400
TPCDD004	33.00	37.00	4.00	353.50	4.00m @ 353.50 ppm	400
TPCDD005	34.00	41.90	7.90	154.20	7.90m @ 154.20 ppm	100
TPCDD006	95.90	99.00	3.10	2445.98	3.10m @ 2445.98 ppm	100
TPCDD006	96.30	98.40	2.10	3496.57	2.10m @ 3496.57 ppm	400
TPCDD026	45.00	52.00	7.00	121.43	7.00m @ 121.43 ppm	100
TPCDD026	56.00	61.00	5.00	115.67	5.00m @ 115.67 ppm	100
TPCDD026	144.00	155.00	11.00	23094.03	11.00m @ 23094.03 ppm	100
TPCDD026	145.00	155.00	10.00	25381.85	10.00m @ 25381.85 ppm	400
TPCDD027	147.00	149.00	2.00	321.36	2.00m @ 321.36 ppm	100
TPCDD027	148.00	149.00	1.00	536.58	1.00m @ 536.58 ppm	400
TPCDD027	161.00	164.00	3.00	513.00	3.00m @ 513.00 ppm	100
TPCDD027	162.00	163.00	1.00	1179.30	1.00m @ 1179.30 ppm	400
TPCDD028	160.00	173.00	13.00	5396.20	13.00m @ 5396.20 ppm	100

Greenvale Energy Limited ASX Release

TPCDD028	161.00	173.00	12.00	5837.54	12.00m @ 5837.54 ppm	400
TPCDD029	128.00	131.00	3.00	1476.68	3.00m @ 1476.68 ppm	100
TPCDD029	128.00	130.00	2.00	2152.22	2.00m @ 2152.22 ppm	400
TPCDD030	44.00	55.00	11.00	239.08	11.00m @ 239.08 ppm	100
TPCDD030	49.00	50.00	1.00	583.75	1.00m @ 583.75 ppm	400
TPCDD030	69.00	71.00	2.00	344.95	2.00m @ 344.95 ppm	100
TPCDD030	192.00	200.00	8.00	452.34	8.00m @ 452.34 ppm	100
TPCDD030	192.00	200.00	8.00	452.34	8.00m @ 452.34 ppm	400
TPCDD031	78.00	84.00	6.00	760.67	6.00m @ 760.67 ppm	100
TPCDD031	80.00	82.00	2.00	2092.67	2.00m @ 2092.67 ppm	400
TPCDD032	113.00	118.00	5.00	4057.17	5.00m @ 4057.17 ppm	100
TPCDD032	115.00	118.00	3.00	6684.67	3.00m @ 6684.67 ppm	400
TPCDD033	81.80	87.80	6.00	786.20	6.00m @ 786.20 ppm	100
TPCDD033	81.80	85.80	4.00	1048.10	4.00m @ 1048.10 ppm	400
TPCDD034	43.00	44.00	1.00	123.24	1.00m @ 123.24 ppm	100
TPCDD034	52.00	53.00	1.00	112.03	1.00m @ 112.03 ppm	100
TPCRC008	120.00	127.00	7.00	799.04	7.00m @ 799.04 ppm	100
TPCRC008	121.00	125.00	4.00	1270.40	4.00m @ 1270.40 ppm	400
TPCRC008	144.00	145.00	1.00	1165.15	1.00m @ 1165.15 ppm	100
TPCRC008	144.00	145.00	1.00	1165.15	1.00m @ 1165.15 ppm	400
TPCRC009	128.00	129.00	1.00	965.85	1.00m @ 965.85 ppm	100
TPCRC009	128.00	129.00	1.00	965.85	1.00m @ 965.85 ppm	400
TPCRC009	132.00	133.00	1.00	768.90	1.00m @ 768.90 ppm	100
TPCRC009	132.00	133.00	1.00	768.90	1.00m @ 768.90 ppm	400
TPCRC011	144.00	155.00	11.00	696.10	11.00m @ 696.10 ppm	100
TPCRC011	148.00	154.00	6.00	1122.10	6.00m @ 1122.10 ppm	400
TPCRC013	52.00	53.00	1.00	106.14	1.00m @ 106.14 ppm	100
TPCRC015	53.00	56.00	3.00	261.41	3.00m @ 261.41 ppm	100
TPCRC015	62.00	63.00	1.00	176.90	1.00m @ 176.90 ppm	100

Greenvale Energy Limited ASX Release

TPCRC017	22.00	23.00	1.00	139.75	1.00m @ 139.75 ppm	100
TPCRC017	72.00	73.00	1.00	176.31	1.00m @ 176.31 ppm	100
TPCRC020	11.00	21.00	10.00	131.27	10.00m @ 131.27 ppm	100
TPCRC020	24.00	26.00	2.00	166.58	2.00m @ 166.58 ppm	100
TPCRC021	39.00	57.00	18.00	109.71	18.00m @ 109.71 ppm	100
TPCRC021	166.00	171.00	5.00	223.15	5.00m @ 223.15 ppm	100
TPCRC021	170.00	171.00	1.00	457.57	1.00m @ 457.57 ppm	400
TPCRC022	50.00	68.00	18.00	398.93	18.00m @ 398.93 ppm	100
TPCRC022	57.00	63.00	6.00	822.76	6.00m @ 822.76 ppm	400
TPCRC024	80.00	81.00	1.00	229.96	1.00m @ 229.96 ppm	100
TPCRC035	107.00	108.00	1.00	404.50	1.00m @ 404.50 ppm	100
TPCRC035	107.00	108.00	1.00	404.50	1.00m @ 404.50 ppm	400
TPCRC038	50.00	51.00	1.00	153.31	1.00m @ 153.31 ppm	100
TPCRC043	107.00	108.00	1.00	114.39	1.00m @ 114.39 ppm	100
TPCRC043	115.00	120.00	5.00	139.86	5.00m @ 139.86 ppm	100
TPCRC043	133.00	135.00	2.00	115.57	2.00m @ 115.57 ppm	100
TPCRC047	78.00	82.00	4.00	102.01	4.00m @ 102.01 ppm	100
TPCRC047	99.00	102.00	3.00	134.24	3.00m @ 134.24 ppm	100
TPCRC048	82.00	84.00	2.00	214.04	2.00m @ 214.04 ppm	100
TPCRC048	97.00	98.00	1.00	128.54	1.00m @ 128.54 ppm	100
TPCRC053	81.00	84.00	3.00	1094.59	3.00m @ 1094.59 ppm	100
TPCRC053	83.00	84.00	1.00	2889.29	1.00m @ 2889.29 ppm	400
TPCRC055	70.00	74.00	4.00	227.02	4.00m @ 227.02 ppm	100
TPCRC055	71.00	72.00	1.00	495.31	1.00m @ 495.31 ppm	400
TPCRC055	91.00	92.00	1.00	653.33	1.00m @ 653.33 ppm	100
TPCRC055	91.00	92.00	1.00	653.33	1.00m @ 653.33 ppm	400
TPCRC056	41.00	43.00	2.00	132.67	2.00m @ 132.67 ppm	100
TPCRC056	47.00	48.00	1.00	181.61	1.00m @ 181.61 ppm	100
TPCRC056	84.00	85.00	1.00	179.25	1.00m @ 179.25 ppm	100

Greenvale Energy Limited ASX Release

TPCRC057	136.00	137.00	1.00	227.60	1.00m @ 227.60 ppm	100
TPCRC063	55.00	77.00	22.00	427.54	22.00m @ 427.54 ppm	100
TPCRC063	63.00	66.00	3.00	938.72	3.00m @ 938.72 ppm	400
TPCRC063	73.00	76.00	3.00	1194.63	3.00m @ 1194.63 ppm	400
TPCRC078	56.00	57.00	1.00	162.74	1.00m @ 162.74 ppm	100
TPCRC081	100.00	101.00	1.00	251.19	1.00m @ 251.19 ppm	100
TPCRC081	114.00	115.00	1.00	148.59	1.00m @ 148.59 ppm	100
TPCRC083	83.00	84.00	1.00	143.87	1.00m @ 143.87 ppm	100
TPCRC083	102.00	103.00	1.00	183.97	1.00m @ 183.97 ppm	100
TPCRC084	113.00	114.00	1.00	317.23	1.00m @ 317.23 ppm	100
TPCRC089	126.00	128.00	2.00	970.56	2.00m @ 970.56 ppm	100
TPCRC089	126.00	127.00	1.00	1745.36	1.00m @ 1745.36 ppm	400
TPCRC089	153.00	155.00	2.00	289.52	2.00m @ 289.52 ppm	100
TPCRC089	153.00	154.00	1.00	418.65	1.00m @ 418.65 ppm	400
TPCRC090	29.00	31.00	2.00	177.78	2.00m @ 177.78 ppm	100
TPCRC090	126.00	128.00	2.00	110.26	2.00m @ 110.26 ppm	100
TPCRC092	103.00	106.00	3.00	229.18	3.00m @ 229.18 ppm	100
TPCRC092	151.00	152.00	1.00	293.65	1.00m @ 293.65 ppm	100
TPCRC095	99.00	100.00	1.00	121.47	1.00m @ 121.47 ppm	100
TPCRC095	103.00	108.00	5.00	113.33	5.00m @ 113.33 ppm	100
TPCRC096	43.00	57.00	14.00	427.16	14.00m @ 427.16 ppm	100
TPCRC096	44.00	48.00	4.00	659.52	4.00m @ 659.52 ppm	400
TPCRC096	51.00	54.00	3.00	628.17	3.00m @ 628.17 ppm	400
TPCRC096	60.00	69.00	9.00	250.80	9.00m @ 250.80 ppm	100
TPCRC096	60.00	61.00	1.00	698.15	1.00m @ 698.15 ppm	400
TPCRC096	67.00	68.00	1.00	471.72	1.00m @ 471.72 ppm	400
TPCRC097	59.00	61.00	2.00	106.96	2.00m @ 106.96 ppm	100
TPCRC098	47.00	50.00	3.00	157.36	3.00m @ 157.36 ppm	100
TPCRC099	71.00	72.00	1.00	117.34	1.00m @ 117.34 ppm	100

Greenvale Energy Limited ASX Release

TPCRC099	85.00	87.00	2.00	171.59	2.00m @ 171.59 ppm	100
TPCRC100	136.00	137.00	1.00	175.72	1.00m @ 175.72 ppm	100
TPCRC105	135.00	137.00	2.00	546.02	2.00m @ 546.02 ppm	100
TPCRC105	135.00	136.00	1.00	891.55	1.00m @ 891.55 ppm	400
TPCRC106	80.00	86.00	6.00	1413.88	6.00m @ 1413.88 ppm	100
TPCRC106	81.00	83.00	2.00	3832.73	2.00m @ 3832.73 ppm	400
TPCRC106	113.00	116.00	3.00	533.04	3.00m @ 533.04 ppm	100
TPCRC106	114.00	116.00	2.00	749.45	2.00m @ 749.45 ppm	400
TPCRC106	162.00	163.00	1.00	247.65	1.00m @ 247.65 ppm	100
TPCRC107	30.00	32.00	2.00	216.70	2.00m @ 216.70 ppm	100
TPCRC107	35.00	47.00	12.00	299.98	12.00m @ 299.98 ppm	100
TPCRC107	39.00	40.00	1.00	1226.47	1.00m @ 1226.47 ppm	400
TPCRC107	45.00	46.00	1.00	879.76	1.00m @ 879.76 ppm	400
TPCRC109	44.00	50.00	6.00	1441.50	6.00m @ 1441.50 ppm	100
TPCRC109	44.00	46.00	2.00	4103.37	2.00m @ 4103.37 ppm	400
TPCRC111	24.00	35.00	11.00	248.51	11.00m @ 248.51 ppm	100
TPCRC111	32.00	34.00	2.00	843.20	2.00m @ 843.20 ppm	400
TPCRC112	15.00	19.00	4.00	139.16	4.00m @ 139.16 ppm	100
TPCRC115	36.00	38.00	2.00	157.44	2.00m @ 157.44 ppm	100
TPCRC115	41.00	43.00	2.00	943.44	2.00m @ 943.44 ppm	100
TPCRC115	41.00	42.00	1.00	1509.50	1.00m @ 1509.50 ppm	400
TPCRC121	151.00	152.00	1.00	106.14	1.00m @ 106.14 ppm	100
TPCRC130	99.00	102.00	3.00	893.91	3.00m @ 893.91 ppm	100
TPCRC130	99.00	102.00	3.00	893.91	3.00m @ 893.91 ppm	400
TPCRC131	134.00	135.00	1.00	363.22	1.00m @ 363.22 ppm	100
TPCRC131	139.00	140.00	1.00	112.03	1.00m @ 112.03 ppm	100
TPCRC132	124.00	127.00	3.00	835.34	3.00m @ 835.34 ppm	100
TPCRC132	124.00	126.00	2.00	1174.58	2.00m @ 1174.58 ppm	400
TPCRC135	64.00	65.00	1.00	133.26	1.00m @ 133.26 ppm	100

Greenvale Energy Limited ASX Release

TPCRC140	74.00	78.00	4.00	115.63	4.00m @ 115.63 ppm	100
TPCRC142	20.00	24.00	4.00	507.10	4.00m @ 507.10 ppm	100
TPCRC142	20.00	24.00	4.00	507.10	4.00m @ 507.10 ppm	400
TPCRC142	61.00	62.00	1.00	384.45	1.00m @ 384.45 ppm	100
TPCRC143	45.00	46.00	1.00	502.38	1.00m @ 502.38 ppm	100
TPCRC143	45.00	46.00	1.00	502.38	1.00m @ 502.38 ppm	400
TPCRC145	43.00	51.00	8.00	147.72	8.00m @ 147.72 ppm	100
TPCRC147	81.00	82.00	1.00	338.46	1.00m @ 338.46 ppm	100
TPCRC147	103.00	104.00	1.00	127.36	1.00m @ 127.36 ppm	100
TPCRD010	119.00	122.00	3.00	1232.37	3.00m @ 1232.37 ppm	100
TPCRD010	119.00	121.00	2.00	1779.56	2.00m @ 1779.56 ppm	400
TPCRD010	132.00	139.00	7.00	1031.38	7.00m @ 1031.38 ppm	100
TPCRD010	132.00	137.00	5.00	1365.87	5.00m @ 1365.87 ppm	400
TPCRD010	143.00	145.00	2.00	152.13	2.00m @ 152.13 ppm	100
TPCRD019	134.00	135.00	1.00	113.92	1.00m @ 113.92 ppm	100
TPCRD019	139.00	154.00	15.00	8295.10	15.00m @ 8295.10 ppm	100
TPCRD019	139.00	149.00	10.00	12264.39	10.00m @ 12264.39 ppm	400
TPCRD019	152.00	153.00	1.00	1285.44	1.00m @ 1285.44 ppm	400
TPCRD049	107.80	108.30	0.50	135.03	0.50m @ 135.03 ppm	100
TPCRD062	94.00	97.10	3.10	1620.89	3.10m @ 1620.89 ppm	100
TPCRD062	94.00	97.10	3.10	1620.89	3.10m @ 1620.89 ppm	400
TPCRD064	9.00	11.00	2.00	121.23	2.00m @ 121.23 ppm	100
TPCRD064	14.00	15.00	1.00	121.47	1.00m @ 121.47 ppm	100
TPCRD064	110.80	111.20	0.40	115.57	0.40m @ 115.57 ppm	100
TPCRD065B	118.75	122.00	3.25	3138.30	3.25m @ 3138.30 ppm	100
TPCRD065B	118.75	121.25	2.50	4038.39	2.50m @ 4038.39 ppm	400
TPCRD065B	125.00	127.50	2.50	390.47	2.50m @ 390.47 ppm	100
TPCRD065B	125.00	126.00	1.00	489.41	1.00m @ 489.41 ppm	400
TPCRD069	34.00	37.00	3.00	144.74	3.00m @ 144.74 ppm	100

Greenvale Energy Limited ASX Release

TPCRD069	142.00	146.00	4.00	103.57	4.00m @ 103.57 ppm	100
TPCRD069	150.40	158.25	7.85	5690.20	7.85m @ 5690.20 ppm	100
TPCRD069	151.40	158.25	6.85	6484.73	6.85m @ 6484.73 ppm	400
TPCRD069	162.00	163.00	1.00	1053.11	1.00m @ 1053.11 ppm	100
TPCRD069	162.00	163.00	1.00	1053.11	1.00m @ 1053.11 ppm	400
TPCRD093	129.70	130.60	0.90	2523.70	0.90m @ 2523.70 ppm	100
TPCRD093	129.70	130.60	0.90	2523.70	0.90m @ 2523.70 ppm	400
TPCRD093	135.00	150.00	15.00	6119.29	15.00m @ 6119.29 ppm	100
TPCRD093	135.00	148.00	13.00	7045.59	13.00m @ 7045.59 ppm	400
TPCRD094	128.15	130.00	1.85	819.14	1.85m @ 819.14 ppm	100
TPCRD094	128.15	129.00	0.85	1320.82	0.85m @ 1320.82 ppm	400

**Table 3 – Thunderball Uranium Project – All Surface Samples within the immediate tenements of interest.**

(Coordinate system is GDA94, Zone 52. All surface sample coordinates were collected by handheld GPS units)

SampleID	Sample Type	Sampled Date	East	North	RL	Tenement	Lith_Code	U_ppm	U3O8_ppm	Sample_Description
HAYRC-096	ROCKCHIP	13/11/2014	779917	8504916		EL23540	no log	24.67	29.093331	
TK651255	ROCKCHIP	15/05/2008	773750	8507287	0		no log	191	225	
HC0003	ROCKCHIP	19/06/2014	773304	8500492	0		no log	81.8	96	earthy weathered white pink kaolinised Zamu Dolerite ferruginous mottles
HC0004	ROCKCHIP	20/06/2014	773328	8500521	0		no log	68.5	81	Weathered pink kaolinised Zamu dolerite Fe-Mn veining
HC0006	ROCKCHIP	26/07/2014	772830	8497696	0		no log	269	317	weathered shale
HC0007	ROCKCHIP	26/07/2014	772816	8497697	0		no log	93	110	weathered shale
HC0008	ROCKCHIP	26/07/2014	774532	8497114	0		no log	165	195	slightly ferruginous narrow-10cm-bedding plane in metapelites strongly radioactive
HC0011	ROCKCHIP	26/07/2014	774212	8498563	0		no log	255	301	Strongly ferruginous/gossanous ironstone float rock from Heatleys Pb area
HC24RF010	ROCK	20/11/2024	773572	8500895		EL23431	gywk	28.84	34.011012	
HC24RF014	ROCK	21/11/2024	773315	8500515		EL10347	nr	101	119.1093	
TK653606	ROCKCHIP	10/02/2010	774531	8497116	0		no log	340	401	
TK653607	ROCKCHIP	10/02/2010	774538	8497131	0		no log	420	495	
HAYRC-047	ROCKCHIP		776132	8501147		MLN811	no log	33.53	39.541929	
HC0009	ROCKCHIP	26/07/2014	774538	8496691	0		no log	60.3	71	ferruginous float
HC0010	ROCKCHIP	26/07/2014	774538	8496691	0		no log	22500	26528	small porous limonitic float rock
HC0017	ROCKCHIP	19/11/2014	774539	8496699	0		no log	1080	1273	clayey ferruginous rubble from pit; unsure if in-situ weathered rock or colluvium

Greenvale Energy Limited ASX Release

HC24AB045	ROCK	4/11/2024	774538	8496759		EL25120	gywk	3005.13	3543.949809	
HC24AB046	ROCK	4/11/2024	774542	8496756		EL25120	gywk	22.7	26.77011	
HC24AB048A	ROCK	4/11/2024	774539	8496698		EL25120	gywk	62.9	74.17797	
HC24AB048B	ROCK	4/11/2024	774539	8496698		EL25120	gywk	121	142.6953	
HC24AB049	ROCK	4/11/2024	774547	8496693		EL25120	gywk	139	163.9227	
TK650574	ROCKCHIP	22/04/2008	776666	8498451	0		no log	50	59	
HC0001	ROCKCHIP	19/06/2014	770332	8498343	0		no log	1210	1427	radioactive ferruginous breccia zone structure 0.2m wide
HC0002	ROCKCHIP	19/06/2014	769717	8499987	0		no log	218	257	ferruginous breccia zone along strike from HC0002
HC0012	ROCKCHIP	17/08/2014	771374	8499834	0		no log	49.4	58	minor 5-10cm wide at most 1m long structuresericitised and limonite +- hematite stained rock tuff?
HC0013	ROCKCHIP	17/08/2014	771541	8499807	0		no log	116	137	steep dipping 2cm wide clayey-limonite stained fracture exposed over several metres in face of massive shale outcrop
HC24AB028	ROCK	11/10/2024	772359	8501090		EL23431	slst	110.99	130.890507	
HC24AB040	ROCK	3/11/2024	770322	8498338		EL24018	gywk	185	218.1705	
HC24AB041	ROCK	3/11/2024	770329	8498336		EL24018	gywk	260	306.618	
HC24AB042A	ROCK	3/11/2024	770412	8498258		EL24018	gywk	617	727.6281	
HC24AB042B	ROCK	3/11/2024	770412	8498258		EL24018	gywk	169	199.3017	
HC24AB043	ROCK	3/11/2024	770363	8498213		EL24018	gywk	45.2	53.30436	
HC24AB050A	ROCK	5/11/2024	769505	8498746		EL24018	qv	27.51	32.442543	
HC24LB001	ROCK	5/11/2024	769493	8499064		EL23509	gywk	100	117.93	
HC24RF001	ROCK	2/11/2024	773745	8502350		EL23431	slst	23.93	28.220649	
HC24RF008	ROCK	5/11/2024	769542	8498777		EL24018	slst	134	158.0262	
HC24RF009	ROCK	5/11/2024	769574	8498808		EL24018	bx	8440	9953.292	
TK650562	ROCKCHIP	8/04/2008	772645	8501303	0		no log	65	77	
TK650563	ROCKCHIP	8/04/2008	772638	8501298	0		no log	2320	2735	

Greenvale Energy Limited ASX Release

TK650564	ROCKCHIP	11/04/2008	772584	8501331	0		no log	75	88	
TK650565	ROCKCHIP	11/04/2008	772597	8501338	0		no log	50	59	
TK650566	ROCKCHIP	11/04/2008	772605	8501336	0		no log	315	371	
TK650567	ROCKCHIP	11/04/2008	772594	8501342	0		no log	40	47	
TK650713	ROCKCHIP	28/01/2009	772321	8500954	0		no log	6910	8147	
TK650714	ROCKCHIP	2/03/2009	768900	8502000	0		no log	310	365	
TK650715	ROCKCHIP	2/03/2009	768834	8501903	0		no log	285	336	
TK650718	ROCKCHIP	10/03/2009	767920	8499583	0		no log	135	159	
TK650719	ROCKCHIP	20/03/2009	769580	8498840	0		no log	11600	13676	
TK650720	ROCKCHIP	23/03/2009	769452	8499079	0		no log	19500	22991	
TK650721	ROCKCHIP	23/03/2009	770413	8498255	0		no log	525	619	
TK650722	ROCKCHIP	26/03/2009	767925	8499962	0		no log	45	53	
TK650723	ROCKCHIP	31/03/2009	768052	8499819	0		no log	25	29	
TK653130	ROCKCHIP	19/09/2009	771374	8499834	0		no log	50	59	sheared and ferruginized tuff within the Halls Creek Fault Zone
TK653131	ROCKCHIP	23/02/2009	769401	8498718	0		no log	175	206	
TK653601	ROCKCHIP	4/02/2010	770009	8499141	0		no log	920	1085	
TK653602	ROCKCHIP	4/02/2010	770028	8499154	0		no log	145	171	
TK653603	ROCKCHIP	4/02/2010	770003	8499140	0		no log	3060	3608	
TK653604	ROCKCHIP	4/02/2010	769994	8499133	0		no log	8210	9680	
TK653605	ROCKCHIP	4/02/2010	769405	8498720	0		no log	650	766	
TK653609	ROCKCHIP	11/02/2010	768237	8500782	0		no log	60	71	

Appendix 2

JORC Table 1

Section 1 Sampling Techniques and Data

(Criteria in this section apply to all succeeding sections.)

Criteria	JORC Code explanation	Commentary
<p><b>Sampling techniques</b></p>	<ul style="list-style-type: none"> <li>• <i>Nature and quality of sampling (e.g. cut channels, random chips, or specific specialised industry standard measurement tools appropriate to the minerals under investigation, such as down hole gamma sondes, or handheld XRF instruments, etc). These examples should not be taken as limiting the broad meaning of sampling.</i></li> <li>• <i>Include reference to measures taken to ensure sample representivity and the appropriate calibration of any measurement tools or systems used.</i></li> <li>• <i>Aspects of the determination of mineralisation that are Material to the Public Report.</i></li> <li>• <i>In cases where ‘industry standard’ work has been done this would be relatively simple (e.g. ‘reverse circulation drilling was used to obtain 1 m samples from which 3 kg was pulverised to produce a 30 g charge for fire assay’). In other cases, more explanation may be required, such as where there is coarse gold that has inherent sampling problems. Unusual commodities or mineralisation types (e.g. submarine nodules) may warrant disclosure of detailed information.</i></li> </ul>	<ul style="list-style-type: none"> <li>• There have been three main phases of exploration over the Thunderball Uranium Project:             <ol style="list-style-type: none"> <li>1. <b>2008 – 2011:</b> Thundelarra Exploration Ltd (“Thundelarra”) 156 RC and diamond core drillholes across all prospects, for a total 23,437.57 metres (m). An additional 6 trenches are attributed to Thundelarra Exploration in the existing database, but only 1 trench appears to have been historically reported by Thundelarra. A total 6 trenches have been excavated historically over the Thunderball Extended and Corkscrew prospects, for a total 111.56m;</li> <li>2. <b>2011 - 2014:</b> Oz Uranium Pty Ltd (a subsidiary of Rockland Resources Ptd Ltd, “Rockland”) diamond core drilling in 2014, consisting of 8 holes for a total 1,075.2m;</li> <li>3. <b>2024 - 2026:</b> Patronus Resources Ltd (“Patronus”), diamond core drilling in 2025, comprising 7 holes for a total 1,278.2m.</li> </ol> </li> <li>• Thundelarra undertook consistent downhole geophysical logging for all holes drilled, using Borehole Wireline Services (<b>BWS</b>), South Australia, as the downhole logging contractor. BWS have a long-standing history of downhole geophysical logging with both of its founders having worked in the uranium industry for more than 30 years. The downhole logging suite comprised 2 logging sondes, BWS GR3827 and GR3866, with stacked Gamma, Magnetic Deviation, Induction, and Optical Imager, enabling the collection of in-situ radiometric (gamma) assays. The downhole gamma assaying method collects data of up to 1-metre diameter into the surrounding formation, allowing a more reliable assaying method for nuggety, vein-style uranium mineralisation. Downhole gamma assays were collected in counts per second, on a 5cm sample interval and a logging speed of 4m/min. The raw gamma counts are later converted via computer-based, deconvolution algorithms, to produce an “equivalent” U<sub>3</sub>O<sub>8</sub> (<b>eU<sub>3</sub>O<sub>8</sub></b>) assay value.</li> <li>• Using the downhole gamma, RC samples were collected on a basis of composites in the hangingwall and footwall to mineralisation, with split</li> </ul>

		<p>samples collected within the mineralised zones. Sample lengths appear to vary between 2 – 5m for composites and 1 – 2m for the splits within the RC holes. Diamond core holes were sampled on a similar basis, with core samples often collected on a smaller interval of between 0.3 and 2m, possibly to ensure sufficient capture of the nuggety, “poddy”, style of vein-hosted mineralisation.</p> <ul style="list-style-type: none"> <li>• In 2014, Rockland Resources (i.e., their subsidiary Oz Uranium Pty Ltd) also engaged Borehole Wireline Services to complete downhole geophysical logging of their 8-hole program. However, holes RHCDD001 – 3 and RHCDD008 were all blocked at depths less than 5m and could not be logged. Downhole gamma probe BWS GR3540 was used for the logging which, as for the Thundelarra drill campaigns, collected downhole gamma assays on a sampling interval of 5cm and a logging speed of 4m/min.</li> <li>• All downhole logging completed for both Thundelarra and Rockland Resources involved regular calibration of all downhole logging tools at the Glenside Calibration Facility, Adelaide, SA.</li> <li>• Rockland Resources collected diamond core samples from 6 of the 8 holes drilled, on sampling intervals of between 0.20 – 1.4m thickness. Samples were collected by company staff and independent geological consultants. All holes were drilled to prescribed depths and refined by the onsite geologists, based on geological information (e.g., not crossing lithological contacts). Drillcore were analysed using a handheld GR110 scintillometer on a 0.2-metre sampling interval, with an Olympus InnovX pXRF handheld spectrometer measuring every 1.0m along the drillcore to select the sample intervals for laboratory assay. Half-core (HQ3) samples were collected for assaying with all sample information (including geological logging information) collected at the time of sampling.</li> <li>• All samples collected between 2008 and 2010 were originally assayed by Northern Territory Environmental Laboratories Pty Ltd (NTEL) in Darwin, NT. Samples were crushed to &lt;6mm and then riffle-split to ~1kg samples, then pulverised in a ring crusher. Using an acid digest, the samples were then analysed using an ICP-MS finish. However, following problems with the assay values as discovered by Thundelarra, samples were re-assayed by AMDEL, Darwin, (later Bureau Veritas) and subsequently added to the database – these values were later verified and used by SRK Consulting in the estimation of the historical mineral resource.</li> <li>• Since 2010, all samples collected were submitted to Bureau Veritas, Western Australia for assaying.</li> <li>• The drilling completed by Patronus Resources in 2025 involved the re-assaying of existing mineralised intercepts from Thunderball (for validation purposes) and the assaying of new holes drilled (TB25DD001 – 7).</li> </ul>
--	--	--

		<ul style="list-style-type: none"> <li>• All diamond core drillholes were drilled to prescribed depths and refined by the onsite geologists based on geological context. The drill core was analysed with a RS 125 Spectrometer (approximately every 0.2 m) and an Olympus InnovX pXRF (approximately every 1.0 m) to select intervals for laboratory assay. Half core (PQ and HQ3) samples were collected for laboratory analysis. Sample information, including lithological descriptions, were collected at the time of sampling.</li> <li>• All but 5 samples were submitted to Intertek Darwin for prep, then transported by road to ALS Adelaide. The 5 high grade samples were sent from Intertek Darwin to, and subsequently analysed by, ANSTO Sydney, via secure authorised road transport.</li> <li>• All of the drillcore was archived and available to Patronus at the time of the PNX Metals and Kin Mining NL merger in 2024.</li> <li>• In May 2026, the Greenvale Energy Competent Person viewed and verified the existence of all available drillcore and RC chips, securely stored by Patronus.</li> <li>• The drilling defined two domains of uranium mineralization: the Main Lode and the Upper Lode.</li> <li>• The Main Lode is defined by 11 diamond core intersections and 7 RC intersections from the Thundelarra exploration, two diamond core intersections from the Rockland exploration, and one diamond core intersection drilled by Patronus.</li> <li>• The Upper Lode is defined by three diamond core intersections and three RC intersections from the Thundelarra exploration, one diamond core intersection from the Rockland exploration, and four diamond core intersections drilled by Patronus.</li> </ul>
<p><b>Drilling techniques</b></p>	<ul style="list-style-type: none"> <li>• <i>Drill type (e.g. core, reverse circulation, open-hole hammer, rotary air blast, auger, Bangka, sonic, etc) and details (e.g. core diameter, triple or standard tube, depth of diamond tails, face-sampling bit or other type, whether core is oriented and if so, by what method, etc).</i></li> </ul>	<ul style="list-style-type: none"> <li>• All drilling completed for Thundelarra was carried out by Gemco – Johanssen Drilling, Darwin, NT. Core diameters included NQ2 (50.6mm), triple-tube NQ (NQ3, 45.0mm) and triple-tube HQ (HQ3, 61.1mm). All RC drill was conducted on a hole diameter of 5 inches (127mm).</li> <li>• Subsequent drilling undertaken by Rockland Resources was completed by DDH1 Drilling Pty and May Drilling Pty Ltd using a track-mounted Alton HD900 rig, at triple-tube HQ3 (61.1mm diameter). Drillcore was orientated using a Relfex Orientation tool and downhole surveys were collected approximately every 30m (downhole) using a REFLEX EZ_TRAC survey tool.</li> <li>• Drilling completed by Patronus in 2025 utilised DDH1 Drilling and a track-mounted Sandvik DE710 rig. All holes were cored with PQ (85.0mm) and cased off to HQ (63.5mm) when observed to be competent. Drill core was oriented</li> </ul>

		using a ACT Mk3 HQ Ori kit. Downhole surveys were completed approximately every 30m downhole, using an Axis North-seeking Gyro orientation kit.
<b>Drill sample recovery</b>	<ul style="list-style-type: none"> <li>• <i>Method of recording and assessing core and chip sample recoveries and results assessed.</i></li> <li>• <i>Measures taken to maximise sample recovery and ensure representative nature of the samples.</i></li> <li>• <i>Whether a relationship exists between sample recovery and grade and whether sample bias may have occurred due to preferential loss/gain of fine/coarse material.</i></li> </ul>	<ul style="list-style-type: none"> <li>• Information regarding core recoveries is limited from the Thundelarra and Rockland Resources drilling campaigns, however core photographs are available for most of the Thundelarra and Rockland mineralized intersections, suggesting generally good core recoveries and low risk of poor recoveries affecting confidence levels for inclusion of core in future mineral resource estimates.</li> <li>• The sample recovery for the RC samples collected by Thundelarra is unclear and sample weights were not recorded.</li> <li>• During the Patronus drill campaign, core recoveries were measured for each 3-metre core run. Lithological logs from the time of drilling indicate core recoveries &gt;99%, with no obvious bias in the sampling. Logging fields include formation, structure, lithology, colour, grainsize, texture, oxidation, regolith, mineralisation abundance, mineralisation style, alteration abundance, alteration style, vein abundance, vein composition, vein style.</li> </ul>
<b>Logging</b>	<ul style="list-style-type: none"> <li>• <i>Whether core and chip samples have been geologically and geotechnically logged to a level of detail to support appropriate Mineral Resource estimation, mining studies and metallurgical studies.</i></li> <li>• <i>Whether logging is qualitative or quantitative in nature. Core (or costean, channel, etc) photography.</i></li> <li>• <i>The total length and percentage of the relevant intersections logged.</i></li> </ul>	<ul style="list-style-type: none"> <li>• RC chip logging is reported to have been carried out adjacent to the drill rig, at the same time as the samples were extracted from the respective drillhole. Recorded logging data included lithology, weathering texture, grainsize, colour, alteration, mineralisation, sulphide content, veining, and other features. Drillhole collar coordinates, azimuth, dip, depth and sampling intervals were also recorded. The entire length of every hole was logged. Diamond core holes from all three phases of exploration were orientated as best as possible, based on structural competency.</li> <li>• Qualitative logging includes classification and description of lithology, weathering, oxidation, colour, texture and grain size. Semi-quantitative logging includes estimated percentages of identified minerals, sulphides and veining.</li> <li>• Logging by Patronus geologists was conducted using LogChief software. Recorded logging data included lithology, weathering texture, grainsize, colour, alteration, mineralisation, sulphide content, veining, structure, drillhole collar coordinates, azimuth, dip, depth and sampling intervals. The entire length of every hole drilled was also logged.</li> <li>• All information collected was entered directly into laptop computers, validated in the field, and then transferred to a DataShed database. The level of logging detail is considered appropriate for exploration and to support future mineral resource estimation, mining studies, and metallurgical studies.</li> </ul>

		<ul style="list-style-type: none"> <li>• All RC chiptrays and drillcore trays were routinely photographed during all drilling campaigns, with all photographs stored in a comprehensive, secure, cloud-based, Seequent database platform (Imago).</li> <li>• A 2026 review of this photography database found that the only missing photographs for Thundelarra were intersections from holes TPCDD006 (Main Lode), and TPCDD033 (Upper Lode). The May 2026 site visit by the Greenvale Competent Person also identified missing mineralised intervals for hole TPCDD0026 (137 – 165m), potentially all used in the 2013 disequilibrium and metallurgical testwork commissioned by Rocklands (completed by ANSTO).</li> </ul>
<p><b>Sub-sampling techniques and sample preparation</b></p>	<ul style="list-style-type: none"> <li>• <i>If core, whether cut or sawn and whether quarter, half or all core taken.</i></li> <li>• <i>If non-core, whether riffled, tube sampled, rotary split, etc and whether sampled wet or dry.</i></li> <li>• <i>For all sample types, the nature, quality and appropriateness of the sample preparation technique.</i></li> <li>• <i>Quality control procedures adopted for all sub-sampling stages to maximise representivity of samples.</i></li> <li>• <i>Measures taken to ensure that the sampling is representative of the in-situ material collected, including for instance results for field duplicate/second-half sampling.</i></li> <li>• <i>Whether sample sizes are appropriate to the grain size of the material being sampled.</i></li> </ul>	<ul style="list-style-type: none"> <li>• All historic and recent drilling campaigns involved cutting half-core samples using standard industry core saws. Sample intervals were selected on a basis of handheld scintillometer readings, downhole gamma assays (for Thundelarra and Rocklands), pXRF spectrometer readings, and geological logging observations.</li> <li>• Core sampling was completed on a variety of sampling interval lengths, ranging from 0.20 – 1.4m for sample splits within mineralised zones and extending to composite samples of between 1 and 5m outside of the mineralised zones.</li> <li>• The Thundelarra RC samples (2008 – 2011) were initially cone-split with the splitter blown with compressed air and cleaned every 6m (i.e., at the end of every drill rod) to reduce potential contamination. Duplicate field samples were taken every 25<sup>th</sup> sample using a riffle splitter to check sample representivity and get approximate weights of 3kg per sample using a three-tiered splitter. Sample composites were collected in the non-mineralised zones of between 2 and 4m, closing down to 1 – 2m splits within the mineralised zones. A sampling spear was used to collect the subsamples from each respective RC sample pile at the rig site.</li> <li>• The original drilling samples collected by Thundelarra between 2008 and 2009, (half core and RC) were initially prepared and analyzed by NTEL in Darwin, during which the samples were crushed to &lt;6 mm, riffle split to ~1kg, then pulverized in a ring crusher, dissolved using an acid digest and analysed with an ICP-MS finish. However, Thundelarra noticed inconsistencies in the resulting assays leading to the re-assaying of samples by AMDEL (Darwin and Perth). All subsequent samples collected from 2010 onwards were sent to AMDEL in Darwin for sample preparation, and Ultratrace (Bureau Veritas) in Perth for analysis. At AMDEL the samples were crushed to &lt;3 mm, riffle-split to 1 kg, and then pulverized.</li> </ul>

		<ul style="list-style-type: none"> <li>• HQ3 and NQ2 core samples collected by Rockland Resources in 2014 were also sawn into half-core with individual samples placed in individual sample bags, clearly identified</li> <li>• prior to dispatch to the laboratory. Field duplicates (quarter core) were inserted into the sample stream.</li> <li>• The re-assaying program completed in 2024 by Patronus involved selecting pulps from various samples (RC and diamond core) and sending them to ALS Adelaide for multi-element analysis. All pulps had been retained from the original drill program and stored in containers. The resulting assays were not materially different from original results and correlate well</li> </ul> <p><b>QAQC:</b> the three drill campaigns used the following QAQC sampling protocols:</p> <ul style="list-style-type: none"> <li>• <b>Thundelarra:</b> 7 field duplicates were submitted to AMDEL (using alternative splits from four RC samples, and quarter-core from three drillcore samples). The results from these field duplicates did not reveal any concerning discrepancies, however it was noted by SRK Consulting in their 2024 Gap Analysis that the overall set of QAQC data available at the time, was too small for a resource estimation process.</li> <li>• <b>Rockland:</b> all samples were sent to Bureau Veritas, Perth, for sample preparation and analysis. Detailed documentation of the sample protocols and quality control results have not been made available to Greenvale Energy personnel, with all information sourced directly from compilation work completed by Patronus Resources. Summary reporting suggests that quarter-core field duplicates were inserted into the sample stream submitted to Bureau Veritas.</li> <li>• <b>Patronus:</b> all samples collected during the 2025 campaign were prepared by Intertek Darwin and then transported to Intertek Perth for drying, crushing to 2mm, pulverized to 75µm, and then analysis by 25-gram lead collection Fire Assay with an Inductively Coupled Plasma – Optical Emission Spectrometry (ICP-OES) finish. An additional 22 field duplicates were included in the sample suite, prepared from coarse rejects of the crushed half-core samples, and analysed by Intertek. The sampling protocol followed by Patronus also involved the following: PQ and HQ core intervals selected for sampling were cut in half using the core-cutting facilities at the Vista Gold Mt Todd facility. This was deliberately done for proper radiation management and containment of all drill cuttings during the cutting process.</li> </ul>
--	--	--

		<p>each sample was placed into an individual sample bag, with the appropriate sample identification number clearly identifying each package prior to dispatch.</p>
<p><b>Quality of assay data and laboratory tests</b></p>	<ul style="list-style-type: none"> <li>• <i>The nature, quality and appropriateness of the assaying and laboratory procedures used and whether the technique is considered partial or total.</i></li> <li>• <i>For geophysical tools, spectrometers, handheld XRF instruments, etc, the parameters used in determining the analysis including instrument make and model, reading times, calibrations factors applied and their derivation, etc.</i></li> <li>• <i>Nature of quality control procedures adopted (e.g. standards, blanks, duplicates, external laboratory checks) and whether acceptable levels of accuracy (i.e. lack of bias) and precision have been established.</i></li> </ul>	<ol style="list-style-type: none"> <li>1. <b>Thundelarra:</b> NTEL, Darwin, was initially utilised for all drill campaigns between 2008 and 2009, with all samples analysed by an acid digest and ICP-MS (Inductively Coupled Plasma – Mass Spectrometry) finish and a uranium detection limit of 0.5ppm U. However, in 2009, following the identification of multiple discrepancies between assay results, geological logging and downhole gamma intercepts, Thundelarra initiated a re-assaying program with Ultratrace in Perth (later Bureau Veritas), the results of which were subsequently used as the correct dataset and utilised for all evaluations thereafter. All sampling completed by Thundelarra after 2010 utilised Bureau Veritas with analytical sub-samples processed using peroxide fusion with an ICP-MS finish, and the same 0.5 ppm U detection limit. A broader suite of elements was also included, assaying for Au, Ag, Cu, Ni, Zn, Co, Pb, Pd, Pt, As, Fe, Mn, Al, Mg, Zr, Ti, V, Bi, Sn, Sb, W, Mo and Ca, but without any dedicated QC samples inserted to monitor these multi-element results. The QAQC program comprised 102 laboratory pulp duplicates and only 12 field duplicates between 2009 and 2011, sourced from alternate RC splits and quarter-core samples, an unspecified number of blanks, and thirteen certified reference material (CRM) samples across four standards (SRK Consulting, 2011). In their 2024 Gap Analysis, SRK later confirmed that the quantity of QAQC samples was too low for updating the existing historic mineral resource to JORC (2012) compliance standards, as the QAQC dataset on its own would not be enough demonstrate analytical accuracy or precision.</li> <li>2. <b>Rockland (Oz Uranium):</b> Bureau Veritas (BV), Perth, were also utilised by Rockland with all samples analysed using laser ablation with a mass spectrometry finish on a fused XRF bead. The Competent Person considers these analytical methods appropriate for the mineralisation style and sample composition, given its common usage for other uranium deposits around Australia.  The 2024 PNX Metals announcement reported that there was no specific detailed QAQC report for the Rocklands samples however field duplicates of quarter core were inserted into the sample batches, with additional uranium standards that had been made from Thunderball material. Laboratory</li> </ol>

		<p>standards and blanks were inserted by Bureau Veritas, as well as the inclusion of numerous laboratory duplicates in each sample submission.</p> <p>3. <b>Patronus:</b> all pulp samples remaining from the 2025 re-assaying and subsequent drilling programs have been retained for future reference and assay (if required).</p> <p>Samples were crushed, milled to 1mm, riffled to obtain a 100g representative sample which was then pulverised to 75µm. Analysis was completed using X-Ray-Fluorescence spectrometry (XRF), according to ANSTO Minerals controlled document G-5915 XRF Procedures Manual. The uranium content in samples PT100042 and PT100046 were above the calibration range of the analysis program, which could have impacted the results for the other contained elements. XRF for these two samples was repeated at a reduced sample weight using silica as the diluent.</p> <p>The uranium concentration in each sample was then measured by Delayed Neutron Activation Analysis (<b>DNAA</b>), according to Reactor Operations controlled document P-4246v6 OPAL DNAA Procedure.</p> <p>DNAA is a selective and sensitive, but fast, nuclear assaying technique fast. Once a sample has been prepared for assay (e.g. crushed/ground, riffled, dried, pulverised), no further sample pretreatment is required (e.g. digestion).</p> <p>Samples and certified uranium standards are loaded into containers and irradiated using the OPAL reactor located on the Lucas Heights site. Blank containers are also irradiated in any given run. Quantification of U-238 occurs via measurement of U-235 fission products resulting from the respective irradiations in the blanks, standards and samples. Quality control occurs via irradiation of a uranium ore check sample in each run.</p> <p>DNAA can be used for samples ranging from high U content (e.g. U3O8) to ppm levels in soils.</p>
<p><b>Verification of sampling and assaying</b></p>	<ul style="list-style-type: none"> <li>• <i>The verification of significant intersections by either independent or alternative company personnel.</i></li> <li>• <i>The use of twinned holes.</i></li> <li>• <i>Documentation of primary data, data entry procedures, data verification, data storage (physical and electronic) protocols.</i></li> <li>• <i>Discuss any adjustment to assay data.</i></li> </ul>	<ul style="list-style-type: none"> <li>• All results in this Report have been verified by the Greenvale Energy Competent Person, who conducted a site visit in May 2026 and verified both the existence of all remaining drillcore and chiptrays, and verified the mineralised intersections reported in all previous ASX Announcements by all three previous explorers (Thundelarra, Rockland Resources and Patronus Resources).</li> <li>• In order to measure counts of radioactivity, gain a visual and indicative verification of assay results from various core intersections, the Greenvale</li> </ul>

		<p>Competent Person was provided with the Patronus RS-125 handheld spectrometer and Brüker handheld portable XRF spectrometer.</p> <ul style="list-style-type: none"> <li>• No extra or additional resampling has been completed, other than those tabulated in this Report.</li> <li>• No twin holes have been drilled.</li> <li>• Other than mentioned above, no extra resamples or Umpire samples have been completed for the Thunderball Uranium Project since those reported by Patronus in the 2025 re-assaying and drilling campaigns.</li> <li>• All assay data received by Patronus during the 2025 re-assaying and drilling programs were in electronic format and subsequently saved to the Patronus Company server, later validated, imported and merged into the larger Patronus Resources', secure, SQL-based DataShed database, which is managed by an external consultant database manager. Database exports are created on a routine basis and access is reportedly limited.</li> <li>• No adjustments have been made to the assay data by Greenvale.</li> <li>• The downhole gamma data collected by Thundelarra and Rockland Resources have also been reviewed by the Greenvale Competent Person, along with the information supplied in the 2013 ANSTO disequilibrium study, commissioned by Rockland. The <math>eU_3O_8</math> grades show good correlation with the chemical assays, supported by ANSTO's 2013 study, proving that the Thunderball Uranium Deposit is in secular equilibrium and that the uranium has not yet been removed through natural radioactive decay.</li> <li>• The data package received by Greenvale for this Due Diligence review included the most updated of these database exports.</li> <li>• Greenvale Energy has completed its Due Diligence on all drilling data referred to in this report. No adjustments have been made to any of the drilling data.</li> </ul>
<p><b>Location of data points</b></p>	<ul style="list-style-type: none"> <li>• <i>Accuracy and quality of surveys used to locate drill holes (collar and down-hole surveys), trenches, mine workings and other locations used in Mineral Resource estimation.</i></li> <li>• <i>Specification of the grid system used.</i></li> <li>• <i>Quality and adequacy of topographic control.</i></li> </ul>	<ul style="list-style-type: none"> <li>• All drill collar locations are reported using the GDA94 datum, Zone 52. Location of the drill collars has been reportedly via a multi-based, wide area different GPS (DGPS) by a surveying contractor and commissioned by Rockland Resources and Patronus Resources.</li> <li>• Initial orientation of drillholes was completed using a handheld compass on the rig.</li> <li>• Subsequent downhole surveys were taken approximately every 30m using either a REFLEX EZ-TRACK survey tool (Rockland) or an Axis North-Seeking Gyro survey tool (Patronus). Downhole surveys for the Thundelarra holes were collected using a Maxi Bore Unit (non-magnetic) on a 20-metre interval downhole.</li> </ul>

Greenvale Energy Limited ASX Release

<p><b>Data spacing and distribution</b></p>	<ul style="list-style-type: none"> <li>• <i>Data spacing for reporting of Exploration Results.</i></li> <li>• <i>Whether the data spacing and distribution is sufficient to establish the degree of geological and grade continuity appropriate for the Mineral Resource and Ore Reserve estimation procedure(s) and classifications applied.</i></li> <li>• <i>Whether sample compositing has been applied.</i></li> </ul>	<ul style="list-style-type: none"> <li>• The data spacing of Exploration Results has already been reported in the 2011 historic mineral resource estimate for the Thunderball Uranium Deposit, which was estimated under the previous JORC (2004) Code, is therefore not currently compliant with JORC (2012) criteria, and should therefore not be relied upon for any financial or investment decisions.</li> <li>• The spacing of all existing drill collars varies between 5 and 30m. At the surface, this spacing would be considered to be tight enough for future mineral resource estimations for unconformity-related, vein-style, structurally controlled uranium deposits.</li> <li>• However, because the majority of holes are angled between 60° and 80°, this sample spacing can increase by up to 40m at depth. This provides the level of geological and grade continuity required for an Inferred category of Mineral Resource Estimation, showing that future drilling campaigns need to be designed such that this sample spacing is tightened accordingly.</li> <li>• Two lodes of mineralisation have been identified at Thunderball – the Upper Lode and the Lower (or Main) Lode.</li> <li>• The Lower Lode is identified by SRK Consulting as being modelled on mineralised intersections of spacings ranging from 15m to 25m.</li> <li>• The Upper Lode is modelled on intersection points ranging up to 40m spacings.</li> <li>• Sample compositing has not been applied since the Thundelarra drilling campaigns, during which RC drill samples were composited up to 4m intervals in zones which were thought to be non-mineralised.</li> </ul>
<p><b>Orientation of data in relation to geological structure</b></p>	<ul style="list-style-type: none"> <li>• <i>Whether the orientation of sampling achieves unbiased sampling of possible structures and the extent to which this is known, considering the deposit type.</i></li> <li>• <i>If the relationship between the drilling orientation and the orientation of key mineralised structures is considered to have introduced a sampling bias, this should be assessed and reported if material.</i></li> </ul>	<ul style="list-style-type: none"> <li>• All holes drilled within the Thunderball Uranium Project intersect the recognised Upper and Lower (Main) Lodes of mineralisation at angles of between 35° and ~80°, with a median angle of approximately 60°.</li> <li>• Topographic restrictions have prevented the right-angled intersection of the mineralised domains by any drillholes.</li> <li>• All reported interval widths are therefore downhole widths and not true widths.</li> <li>• Further drilling and modelling is required at each prospect to better constrain true width.</li> <li>• It is not known whether the relationship between the drilling orientation and the orientation of mineralised structures has introduced sampling bias.</li> </ul>
<p><b>Sample security</b></p>	<ul style="list-style-type: none"> <li>• <i>The measures taken to ensure sample security.</i></li> </ul>	<ul style="list-style-type: none"> <li>• Samples from all historic and recent drilling/sampling campaigns utilised packaging of individual samples into individual bulk sample bags, clearly</li> </ul>

		<p>marked and identified prior to submission to the respective laboratory for assay.</p> <ul style="list-style-type: none"> <li>• Details of specific sample security measures employed by Thundelarra and Rockland do not seem to be available in the documents provided for the Due Diligence review or in the publicly available technical reports.</li> <li>• Samples collected by Patronus were transported to Intertek Darwin via PTN staff, and to ALS Adelaide via courier – both methods were considered appropriately secure.</li> <li>• On receipt of the samples, the laboratories independently checked the respective sample submission forms to verify that the correct samples had been received and readied the samples for sample preparation.</li> <li>• Both Intertek and ALS sample security protocols are of industry standard and deemed acceptable.</li> </ul>
<p><b>Audits or reviews</b></p>	<ul style="list-style-type: none"> <li>• <i>The results of any audits or reviews of sampling techniques and data.</i></li> </ul>	<ul style="list-style-type: none"> <li>• There have been four audit phases for the Thunderball Uranium Project data, as follows:             <ol style="list-style-type: none"> <li>1. In 2011, SRK Consulting (Australasia) Pty Ltd completed a full audit and review of all data, sampling and assaying techniques in order to prepare the historic mineral resource estimate under the previous, now outdated, JORC (2004) Code.</li> <li>2. SRK Consulting were engaged again in 2024 by PNX Metals Ltd to conduct a database-wide Gap Analysis review.</li> <li>3. Between 2024 and 2026, all points raised by this Gap Analysis were addressed in the Patronus work programs. No spurious information has since been found.</li> <li>4. In 2026, under this current Report, Greenvale conducted a Project-wide review of all available data and information. No spurious information has been found.</li> </ol> </li> </ul>

**Section 2 Reporting of Exploration Results**

(Criteria listed in the preceding section also apply to this section.)

Criteria	JORC Code explanation	Commentary
<p><b>Mineral tenement and land tenure status</b></p>	<ul style="list-style-type: none"> <li>• <i>Type, reference name/number, location and ownership including agreements or material issues with third parties such as joint ventures, partnerships, overriding royalties, native title interests, historical sites, wilderness or national park and environmental settings.</i></li> <li>• <i>The security of the tenure held at the time of reporting along with any known impediments to obtaining a licence to operate in the area.</i></li> </ul>	<p>This Announcement covers 27 granted Exploration Licences listed as follows with Patronus' current ownership proportion shown in brackets:</p> <ul style="list-style-type: none"> <li>• EL32489 (100%)</li> <li>• EL33713 (90%)</li> <li>• EL33479 (100%)</li> <li>• EL33718 (90%)</li> <li>• EL23431 (90%)</li> <li>• EL25379 (100%)</li> <li>• EL24409 (90%)</li> <li>• EL24405 (90%)</li> <li>• EL33784 (100%)</li> <li>• EL23509 (100%)</li> <li>• EL25295 (90%)</li> <li>• EL31893 (100%)</li> <li>• EL24018 (90%)</li> <li>• EL24051 (90%)</li> <li>• EL24058 (90%)</li> <li>• EL10347 (90%)</li> <li>• EL24715 (90%)</li> <li>• EL10012 (90%)</li> <li>• EL9608 (90%)</li> <li>• EL24351 (90%)</li> <li>• EL23541 (90%)</li> <li>• EL23540 (90%)</li> <li>• EL23536 (90%)</li> <li>• EL31099 (100%)</li> <li>• EL25120 (100%)</li> <li>• EL27363 (100%)</li> <li>• EL10120 (100%).</li> </ul> <ul style="list-style-type: none"> <li>• All licences under 90% ownership by Patronus are 10% owned by the JV Partner.</li> </ul>

		<ul style="list-style-type: none"> <li>• The licences were originally granted to various companies including Northern Gold, Dominion Gold Mines and the Burnside Joint Venture (50% Buffalo Creek Mines and 50% Territory Goldfields). After several changes of ownership and company mergers, Newmarket Gold, Newmarket entered into two exploration agreements over these licences: the first with Rockland Resources (“Rockland”) for the uranium rights and then with PNX Metals Ltd for all other minerals. The licences are now 90% owned by Patronus with 10% owned by the JV Partner. The uranium agreement with Rockland expired in late 2023.</li> <li>• All Exploration Leases are situated within Douglas Station (Perpetual Pastoral Lease 903, NT Portion 2683).</li> <li>• Patronus has permission from the pastoral lease owners to access the areas. There are no formal landowner access agreements in place.</li> <li>• The tenements are in good standing and no known impediments exist.</li> <li>• The Thunderball Uranium Resource and all of the currently recognised uranium prospects reported in this Announcement are situated within Exploration Licences: EL10347 (90%), EL23431 (90%), EL23509 (100%), EL24018 (90%), EL25120 (100%), EL27363 (100%), EL9608 (90%).</li> <li>• Patronus’ 2025 exploration activities (site and track clearance; drilling) occurred on EL23431, EL23509 (use of existing access tracks) and mineral lease ML29933 (storage and laydown area).</li> <li>• Mining Lease Application (ML32105) coincides with a small part of EL23509, and is owned by David Trow and Trojon Enterprises Pty Ltd, solely for the purpose of mining alluvial gold.</li> <li>• A Native Title Claim area also coincides with EL23509, but is related to the Application area of ML32105. Claim (DC2019/005) was registered in 2019 but has yet received any determination. The Claim does not limit the Thunderball Uranium Project but it subsequently includes the Wagiman People and David Trow/Trojon Enterprises Pty Ltd in the key stakeholders for the Project.</li> </ul>
<p><b>Exploration done by other parties</b></p>	<ul style="list-style-type: none"> <li>• <i>Acknowledgment and appraisal of exploration by other parties.</i></li> </ul>	<ul style="list-style-type: none"> <li>• The area is well known for gold, uranium, tin, lead, zinc, copper and silver mineralisation and has been extensively explored, particularly for alluvial-elluvial gold, since the 1870. There are a number of historic gold mines in the immediate area. Very little of the historic work tested for uranium.</li> <li>• Significant uranium exploration in the prospect areas has been completed by two companies:</li> <li>• Thundelarra Exploration (renamed Element 92) (2008-11)</li> <li>• Oz Uranium (subsidiary of Rockland Resources) (2011- 16)</li> </ul>

		<ul style="list-style-type: none"> <li>• PNX was in partnership with Oz Uranium from 2014 (refer PNX ASX release 9 November 2023) and acquired EL23509 as part of an agreement (refer PNX ASX release 28 June 2022).</li> <li>• PTN and PNX merged in September 2024.</li> </ul> <p>Thundelarra discovered the Thunderball Uranium Deposit and the Bella Rosa Uranium Deposit (the latter has no mineral resource estimate but is currently owned by Kingsland Minerals). A maiden Inferred Mineral Resource was announced on 7 Feb 2011 under the previous JORC 2004 (pre-JORC 2012). Being reported a previous iteration of the JORC Code, this historic Mineral Resource is not compliant to the JORC (2012) Code, has not been verified by the Greenvale Competent Person and so must not be considered for any financial or investment decision. The historic mineral resource estimate was prepared by SRK Consulting (Australasia) Ltd.</p> <p>In 2014, Thundelarra sold its uranium interests to Oz Uranium Pty Ltd, a wholly-owned subsidiary of Rockland Resources, to whom all of the subsequent exploration data is assigned in the current database. Rockland undertook the deposit-specific metallurgical and disequilibrium testwork completed by ANSTO in 2013 and 2014, as well completing an 8-hole drilling program of validation diamond drillcore holes at Thunderball.</p> <p>Between 2014 and 2023, PNX Metals Ltd partnered with Oz Uranium for parts of the Pine Creek tenement package, then acquired full ownership of all uranium rights, including for Thunderball, in 2023 when Oz Uranium relinquished its interests. All datasets, drillcore and remaining sample pulps were transferred wholly over to PNX who then merged with Kin Mining NL in 2024 to form Patronus Resources Ltd.</p> <p>Greenvale conducted a site-based visit as part of its Due Diligence review process. During this site visit, a selection of drillcore from reported intersections, the historical resource area of Thunderball and selected intercepts and lithologies from various regional prospects were viewed and verified by the Competent Person. The remaining historical drillcore trays were also viewed in the current Patronus historic core laydown area.</p>
<p><b>Geology</b></p>	<ul style="list-style-type: none"> <li>• <i>Deposit type, geological setting and style of mineralisation.</i></li> </ul>	<ul style="list-style-type: none"> <li>• The Thunderball Uranium Project is ideally situated within the Central Domain of the Pine Creek Orogen, a polymetallic mineral province in the Northern Territory of Australia, which has proven world-class mineral deposits and mines.</li> <li>• The following description of the geological setting is taken directly from the Patronus Resources ASX Announcement (dated 25 Nov 2025) and incorporates a geological summary based on a deposit-wide review of the Thunderball mineralisation by Sinclair Geoscience Pty Ltd:</li> </ul>

		<ul style="list-style-type: none"> <li>• <i>The geological setting consists of Palaeoproterozoic volcanic-siliciclastic metasediments.</i></li> <li>• <i>At the Thunderball Uranium Deposit the drilling reveals packages of volcanic-derived sediment, siliciclastic greywacke, siltstone and carbonaceous mudstone and dolerite of low metamorphic grade.</i></li> <li>• <i>The stratigraphy in the project area, as shown in geological maps published by government geological surveys, is South Alligator Group (Koolpin Formation, Gerowie Tuff, Mount Bonnie Formation) overlain by Finnis River Group (Burrell Creek Formation). The South Alligator Group was intruded by sills of Zamu Dolerite, which are also found in the project area.</i></li> <li>• <i>There is greater than 70% outcrop in the greater project area.</i></li> <li>• <i>The Palaeoproterozoic stratigraphy, including the Zamu Dolerite, has been tightly folded to form domes (Golden Dyke Dome), metamorphosed to sub- to lower greenschist facies and cut by numerous faults in the project area.</i></li> <li>• <i>Uranium mineralisation is found in many stratigraphic units in the Pine Creek Orogen.</i></li> <li>• <i>Uranium mineralisation in the Pine Creek Orogen is commonly near faults cutting basement stratigraphy and unconformities with overlying basin packages.</i></li> <li>• <i>The main uranium mineralisation at Thunderball appears to be preferentially hosted at the contact of the Mt Bonnie Formation and the Gerowie Tuff. The uranium is replacing any pyrite in the area proximal to brittle structures. Evidence suggests that this is unconformity Proterozoic replacement style, in an original exhalative setting.</i></li> <li>• <i>The mineralisation pods plunge roughly 40 degrees towards the North.</i></li> <li>• <i>Greenvale’s review of all the available information, the 2025 deposit-wide interpretation by Sinclair Geoscience Pty Ltd of the Thunderball Uranium Deposit, and the GRV Competent Person’s observations from the May 2026 site visit, all add that the uranium mineralisation occurs as predominantly uraninite with minor amounts of brannerite and a canary-yellow uranium secondary mineral (likely a uranyl vanadate such as carnotite). The uranium appears to replace sulphides and is mixed in with a “worm-rock” alteration texture of haematite-limonite-illite clay, which is typically seen in the ultra-high-grade, Proterozoic unconformity-related uranium deposits of the Athabasca Basin.</i></li> <li>• <i>The host lithologies at Thunderball (predominantly the basal part of the Mount Bonnie Formation siltstones and sandstones, the Gerowie Tuff siltstones and carbonaceous/graphitic shales appear to have undergone primary hydrothermal alteration resulting in widespread sericite alteration. This is then overprinted by an iron-rich alteration event, creating the “worm-rock” alteration</i></li> </ul>
--	--	--

Greenvale Energy Limited ASX Release

		and in some places oxidation of possible early-stage sulphides. The third alteration event appears to be ingress of a reducing fluid, forming the sulphides and then, lastly, ingress of the uraniferous fluids which have replaced the sulphides in some locations.
<b>Drill hole Information</b>	<ul style="list-style-type: none"> <li>• A summary of all information material to the understanding of the exploration results including a tabulation of the following information for all Material drill holes: <ul style="list-style-type: none"> <li>◦ easting and northing of the drill hole collar</li> <li>◦ elevation or RL (Reduced Level – elevation above sea level in metres) of the drill hole collar</li> <li>◦ dip and azimuth of the hole</li> <li>◦ down hole length and interception depth</li> <li>◦ hole length.</li> </ul> </li> <li>• If the exclusion of this information is justified on the basis that the information is not Material and this exclusion does not detract from the understanding of the report, the Competent Person should clearly explain why this is the case.</li> </ul>	<ul style="list-style-type: none"> <li>• Relevant drillhole information can be found in Appendix 1, Table 1 and Table 2 in the body of this Announcement. All original and re-assay results are listed in the table below.</li> </ul>
<b>Data aggregation methods</b>	<ul style="list-style-type: none"> <li>• In reporting Exploration Results, weighting averaging techniques, maximum and/or minimum grade truncations (e.g. cutting of high grades) and cut-off grades are usually Material and should be stated.</li> <li>• Where aggregate intercepts incorporate short lengths of high-grade results and longer lengths of low-grade results, the procedure used for such aggregation should be stated and some typical examples of such aggregations should be shown in detail.</li> <li>• The assumptions used for any reporting of metal equivalent values should be clearly stated.</li> </ul>	<ul style="list-style-type: none"> <li>• Reported drilling results have been aggregated based on a 400ppm U3O8 minimum cut off.</li> <li>• A 400ppm U3O8 minimum cut off has been used for reported intercepts.</li> <li>• U3O8 values are calculated using the metal to oxide formula: <math>U(\text{ppm}) * 1.1792 = U3O8(\text{ppm})</math></li> <li>• No upper cut-off grades were applied.</li> <li>• There is no reporting of metal equivalent values.</li> </ul>
<b>Relationship between mineralisation widths and intercept lengths</b>	<ul style="list-style-type: none"> <li>• These relationships are particularly important in the reporting of Exploration Results.</li> <li>• If the geometry of the mineralisation with respect to the drill hole angle is known, its nature should be reported.</li> <li>• If it is not known and only the down hole lengths are reported, there should be a clear statement to this effect (e.g. 'down hole length, true width not known').</li> </ul>	Drill intercepts are reported as downhole widths not true widths.

Greenvale Energy Limited ASX Release

<p><b>Diagrams</b></p>	<ul style="list-style-type: none"> <li>• <i>Appropriate maps and sections (with scales) and tabulations of intercepts should be included for any significant discovery being reported. These should include but not be limited to a plan view of drill hole collar locations and appropriate sectional views.</i></li> </ul>	<p>Refer to the body of the release for appropriate maps and diagrams.</p>
<p><b>Balanced reporting</b></p>	<ul style="list-style-type: none"> <li>• <i>Where comprehensive reporting of all Exploration Results is not practicable, representative reporting of both low and high grades and/or widths should be practiced to avoid misleading reporting of Exploration Results.</i></li> </ul>	<p>All significant drilling intercepts are provided in Appendix 1, Table 2 in the body of the announcement.</p>
<p><b>Other substantive exploration data</b></p>	<ul style="list-style-type: none"> <li>• <i>Other exploration data, if meaningful and material, should be reported including (but not limited to): geological observations; geophysical survey results; geochemical survey results; bulk samples – size and method of treatment; metallurgical test results; bulk density, groundwater, geotechnical and rock characteristics; potential deleterious or contaminating substances.</i></li> </ul>	<p>See the main body of this Report, however additional substantive exploration data reviewed includes:</p> <ul style="list-style-type: none"> <li>• Prospect- and deposit-scale structural and geological mapping and analysis (by SRK (Australasia) in 2010, and SJ Geology Ltd in 2025).</li> <li>• Deposit-wide review and interpretation of the Thunderball drillcore, by Sinclair Geoscience Pty Ltd in 2025.</li> <li>• Geophysical Surveys:             <ul style="list-style-type: none"> <li>• Regional-scale airborne electromagnetic (AEM) survey (2008 – 2009; Rum Jungle TEMPEST Survey) flown by Geoscience Australia, across the Thunderball Uranium Project. Flight line spacing was 2km across the Rum Jungle – Pine Creek regions and then narrowed down to a closer line spacing of 300m over the Thunderball Deposit (Thundelarra 2009 Annual Report for EL25553). This dataset would later be merged with smaller, prospect-scale AEM surveys to the south (and outside of) the Project area, completed by various companies on flight line spacings reduced down to 500m.</li> <li>• Detailed regional-scale magnetic and radiometric survey completed by Thomson Air consisting of 780-line km at 25m line spacings (Annual Report CR2009-103; CR2010-0054) in 2009.</li> <li>• 2010 ground radiometrics within drainage system at Corkscrew Prospect (CR2010-0054).</li> <li>• 2011 VTEM survey commissioned by Crocodile Gold clipped part of EL10120 and EL23509; 150 m line-spacing for a total 4,079 line km.</li> </ul> </li> <li>• Downhole gamma logging completed by Thundelarra and Rockland.</li> <li>• Petrological, and mineralogical, analysis of thin and polished sections from a subset of 8 selected drillcore samples, completed by Pontifex and Associates in 2009.</li> <li>• Scanning Electron Microscope (SEM) by Teal and Associates Pty Ltd in 2010, completed on one sample.</li> </ul>

		<ul style="list-style-type: none"> <li>• Quantitative Evaluation of Minerals by Scanning Electron Microscopy (QEMSCAN) by ALS Metallurgy, which used 10 mineralised core samples and led to the recognition of the main uranium mineral as uraninite. This study was completed in 2013.</li> <li>• Additional studies in 2013 included the Diagnostic Leach Testwork and Disequilibrium work completed by ANSTO, Sydney. Five drillcore samples were utilised for the mineralogical, disequilibrium and diagnostic leach tests, which concluded that:             <ol style="list-style-type: none"> <li>1. The Thunderball Uranium Deposit was in secular equilibrium and any future mineral resource estimation could, therefore, confidently utilise a downhole gamma assay dataset for estimation purposes, using chemical assays for more of a QAQC / gamma validation purpose. This will reduce costs for future programs but, more importantly, helps to circumnavigate the inherent sampling bias issues that can arise from nuggety, poddy, vein-style mineralisation.</li> <li>2. The leach tests successfully demonstrated that the Thunderball uranium mineralisation can be easily extracted under leach.</li> </ol> </li> <li>• In 2014, Rockland completed a VTEM survey for 414 line km at a spacing of 100m, closing down to a tighter line spacing of 50m over the Thunderball Deposit.</li> <li>• Comprehensive dataset of 1,002 density samples collected from diamond drillcore using the water immersion method and completed by Patronus Resources (2024 – 2025).</li> </ul>
<p><b>Further work</b></p>	<ul style="list-style-type: none"> <li>• <i>The nature and scale of planned further work (e.g. tests for lateral extensions or depth extensions or large-scale step-out drilling).</i></li> <li>• <i>Diagrams clearly highlighting the areas of possible extensions, including the main geological interpretations and future drilling areas, provided this information is not commercially sensitive.</i></li> </ul>	<p>Greenvale propose to undertake a focused resource definition drilling campaign at the Thunderball Uranium Deposit in order to further assist the update of the existing historic resource to JORC (2012) Code compliance, as well as testing potential for further resource growth and extension at depth and along strike from the currently-defined mineralised envelope.</p> <p>In addition, Greenvale propose to initiate regional-scale mapping and sampling efforts over the existing uranium prospects surrounding the Thunderball trend. The objective of this work is to help progress these prospects and exploration targets towards possible drill-testing in the 2027 exploration field season, pending results from the surface sampling.</p>