

# BUXTONRESOURCES

FOCUSED ON DISCOVERY



## Corporate Presentation

12 June 2026

We are a **proven** generator of high-quality projects with the relevant in-house technical and business expertise to **add value** from generation, through discovery and into development

We are **focused** on 100% owned projects have potential to drive **outstanding discovery returns** for shareholders

We will opportunistically assess **monetising** vs **enhancing** our portfolio of “**call options**” which hold significant inherent value

We are **actively** growing a pipeline of Cu & Cu-Au assets in **Tier-1 jurisdictions**

*Capital discipline and technical sophistication within a clear investment framework*

# FOCUSED ON DISCOVERY

## 1) High-quality Project Generator

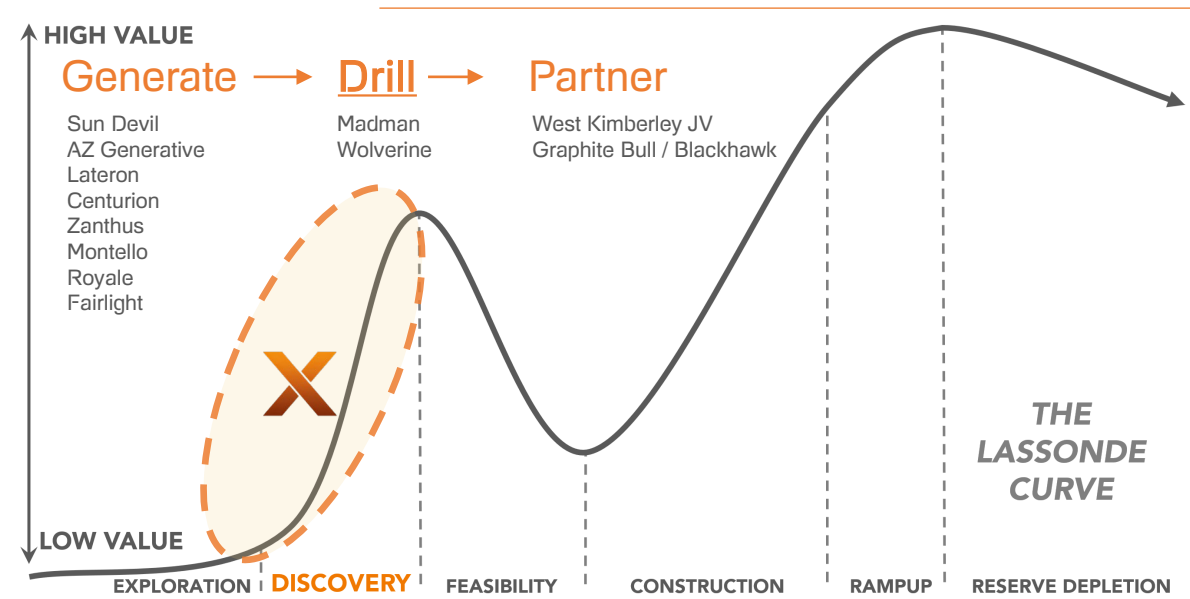
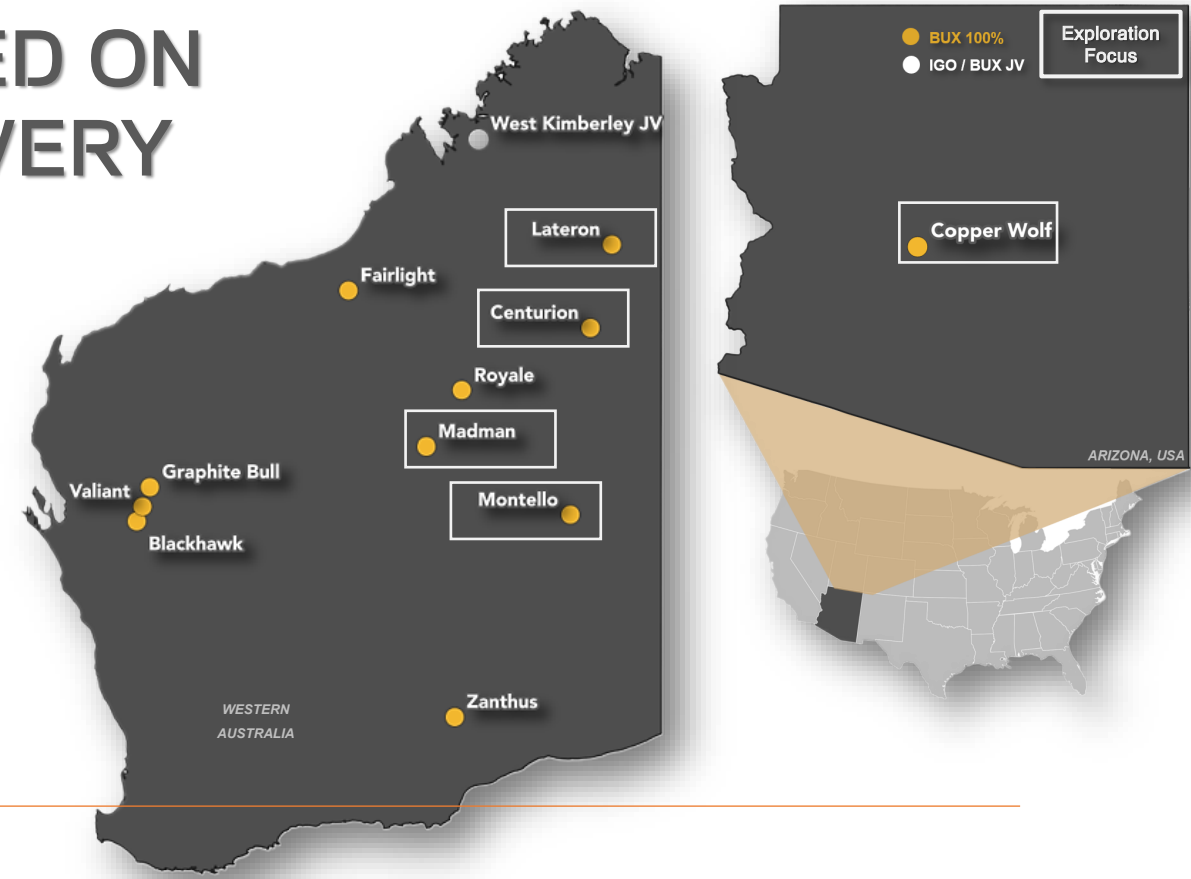
- Thorough, evidenced-based targeting using geoscience & data science
- Validation through partnerships with mining houses

## 2) Proven discovery record

- 2 maiden resources defined - Graphite Bull & Zanthus (magnetite)
- 2 belt-scale discoveries defined via BUX's project generation - West Kimberley (nickel) & Blackhawk (graphite)

## 3) Pipeline approach that balances opportunity & risk

- Projects with **massive re-valuation potential** (e.g. Copper Wolf, Madman, Centurion)
- Advanced projects with **low geological risk** (Graphite Bull, Blackhawk, Zanthus)
- Commodity spread, Tier 1 jurisdictions



**ASX:BUX**

**Mkt Cap:** A\$15.47M @ 3.8 12/06/26

**Shares out:** 428.6M / 64.37M options

Inc: ASX:BUXO - 19.37M listed options at 16c expiring 31/07/26

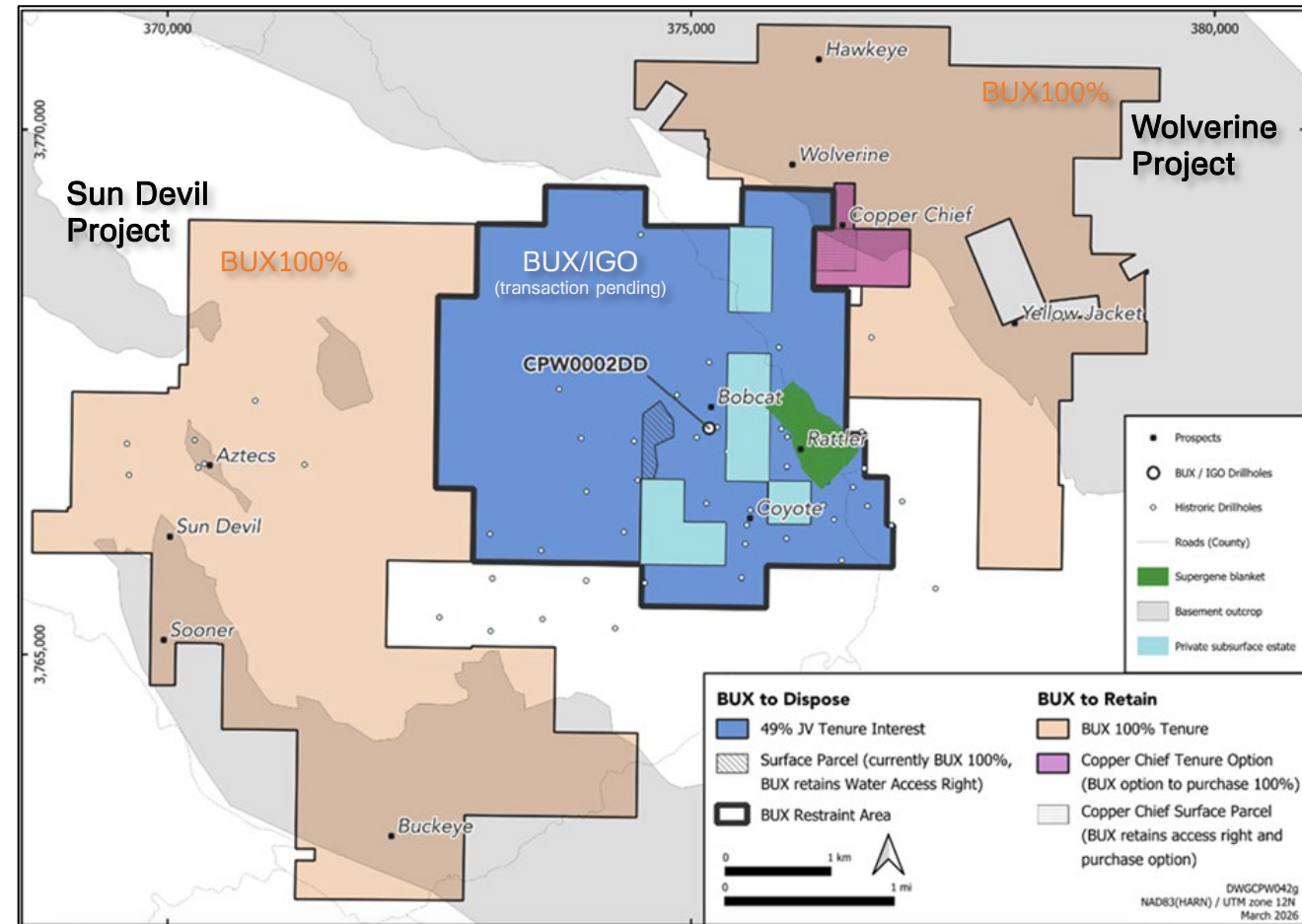
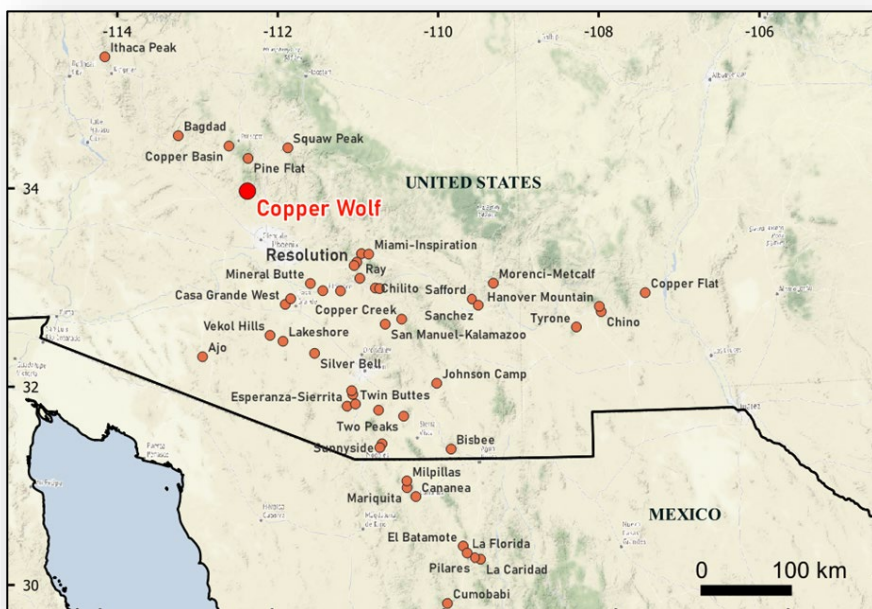
## Upcoming Milestones & Catalysts (2026)

- **Madman** Project (Western Australia): Drilling program commencement expected June 2026
- **Copper Wolf** Project (Arizona)
  - Completion of the pending transaction with IGO Limited (announced 30/03/2026)
  - Geophysics and initial diamond drilling (DD) at **Wolverine**
  - Systematic target definition via mapping, geochemistry, & geophysics at **Wolverine & Sun Devil**
- De-risking WA Projects:
  - **Lateron** - IP surveys
  - **Centurion** - MT and passive seismic
  - **Zanthus** - Assessing historic pulps returned from IGO (withdrawn from Fraser Range Farm-In)
  - **Montello** - Pre-grant heritage assessments and HPA negotiation

# COPPER WOLF

## Asset Sale Agreement

- The deal delivers ~A\$6.15M in non-dilutive cash (pre tax) while retaining the regional exploration upside.
- IGO's drill hole CPW002DD returned 405 metres at 0.35% copper and 0.05% molybdenum — **we have discovered at-surface and un-drilled replicas on our 100%-owned ground e.g. Wolverine and Sun Devil.**
- The ROFR is gone — we can now deal freely on all of our Arizona ground
- Any dollar IGO spends exploring Copper Wolf potentially increases the value of our surrounding ground

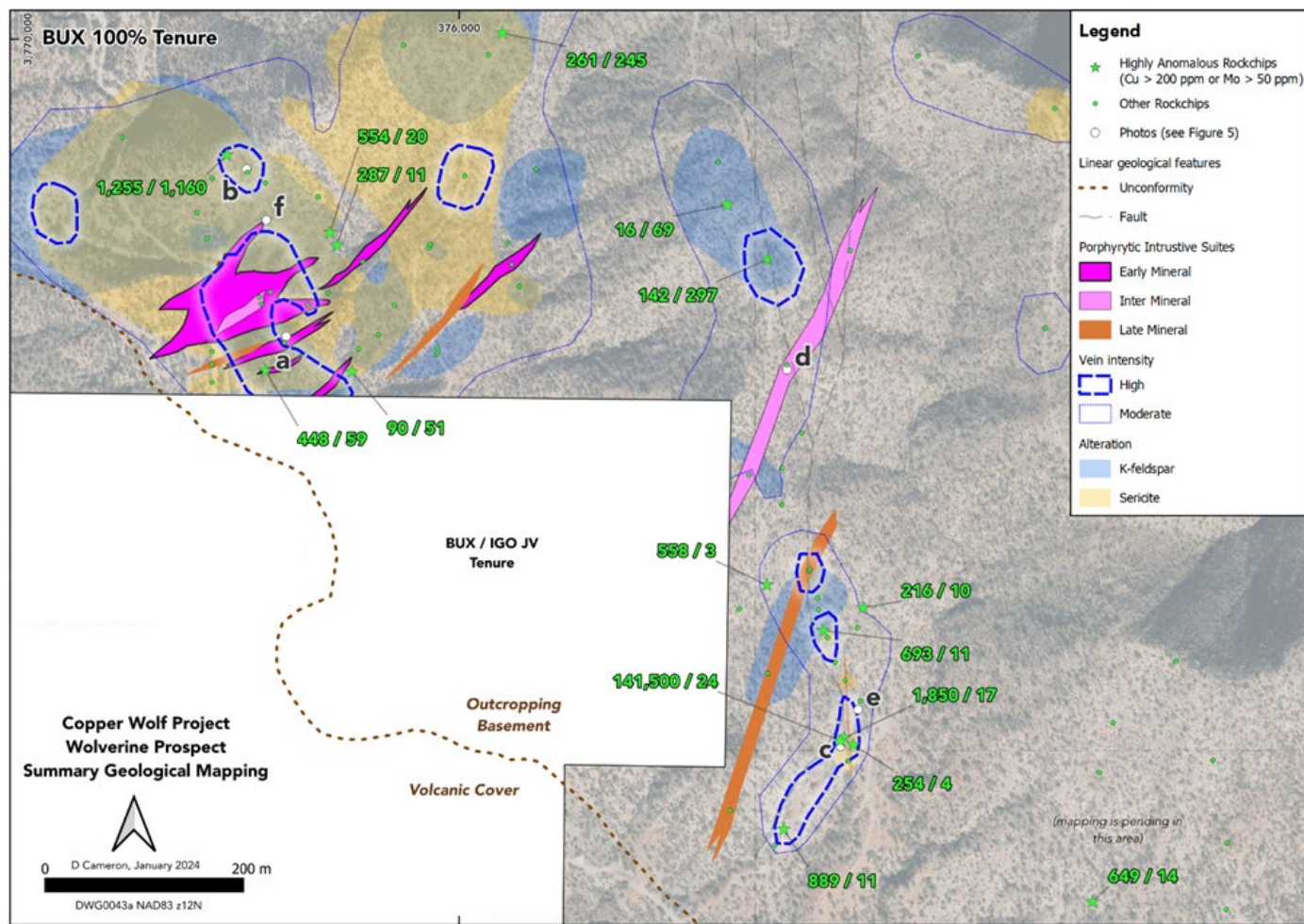


CPW0002DD at 619.70 m depth. High grade porphyry mineralisation results where the vein system intersects wall rocks. Visually estimated sulphide abundances: 1.5% pyrite, 1.0% chalcopyrite and 0.15% molybdenite. HQ3 core is 63.5 mm width. Assay 1.83m @ 0.58% Cu, 0.17% from 619.35m (ASX 06/09/2023 & 14/12/2023)

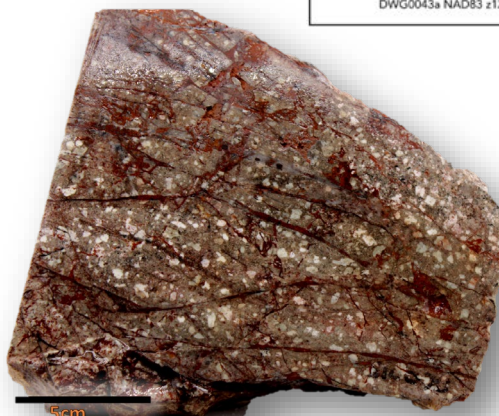
# WOLVERINE

## Undrilled extension of the Copper Wolf porphyry system at surface

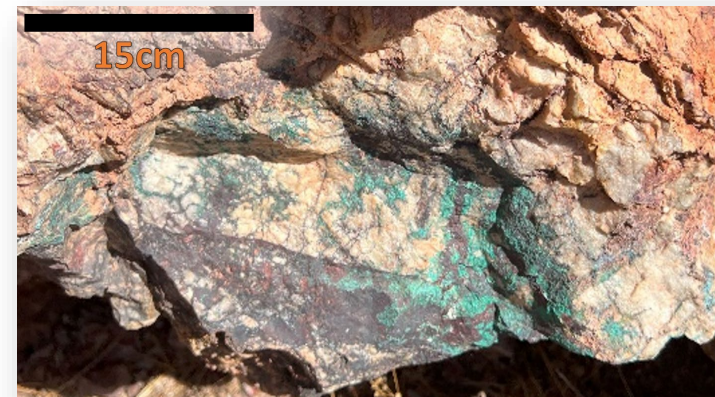
- Highly encouraging indications of a porphyry Cu-Mo system on 100% BUX tenure with no volcanic cover. Multiple surface exposures with:
  - Porphyritic dykes comparable to CPW0002DD
  - Coincident veining, k-feldspar & qtz-sericite-py alteration and fe-oxides
  - Significant Cu & Mo anomalism
- No known historic drilling within the Wolverine Prospect area



Chrysocolla staining inside iron-oxide fractures nearby to porphyritic dacitic dykes.



Leached plagioclase-phyric porphyry cut by quartz-iron oxide veins

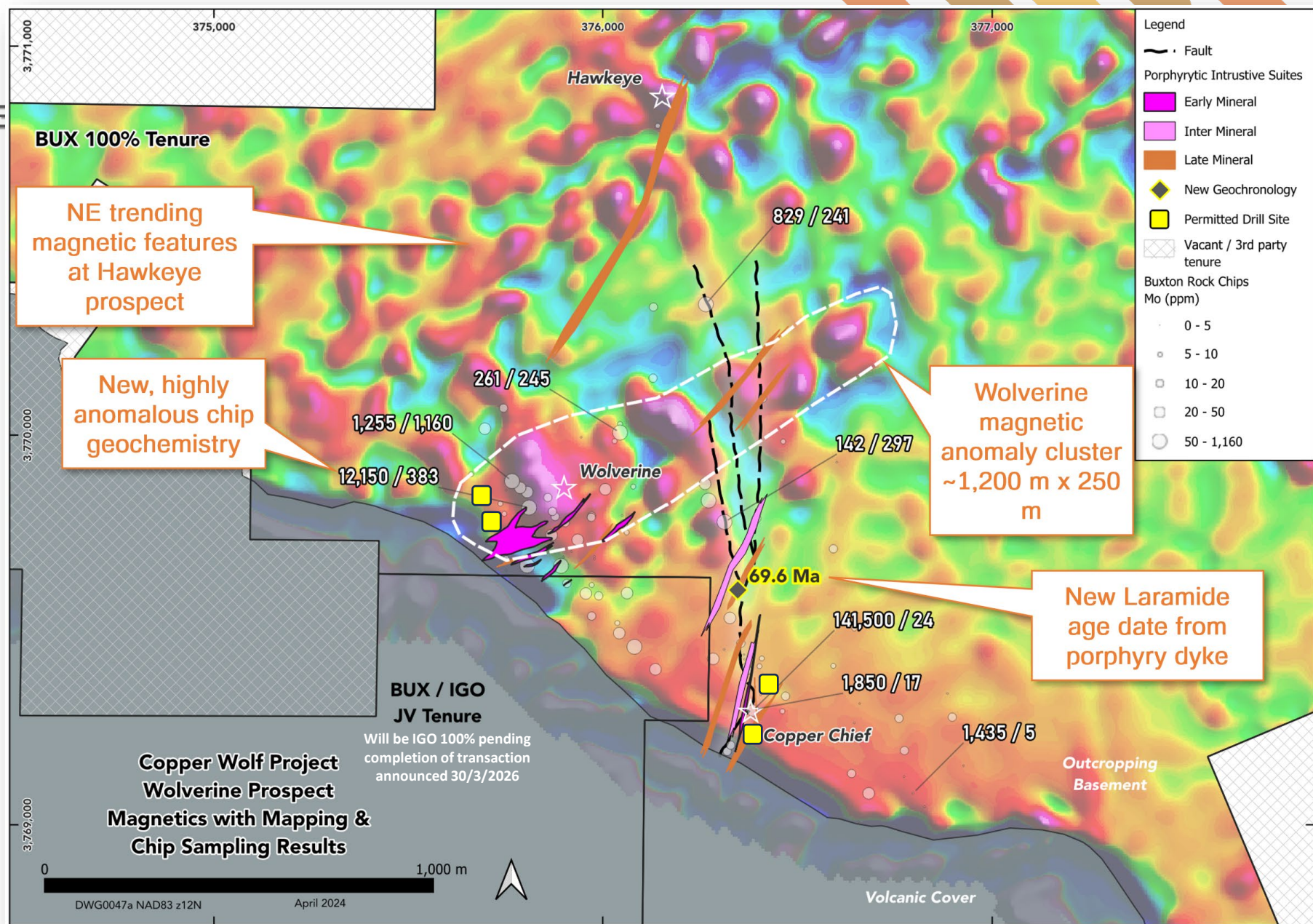


Iron-oxide-malachite contained in leached outcrop proximal to mapped porphyries.

# WOLVERINE

Undrilled extension of the Copper Wolf porphyry system at surface

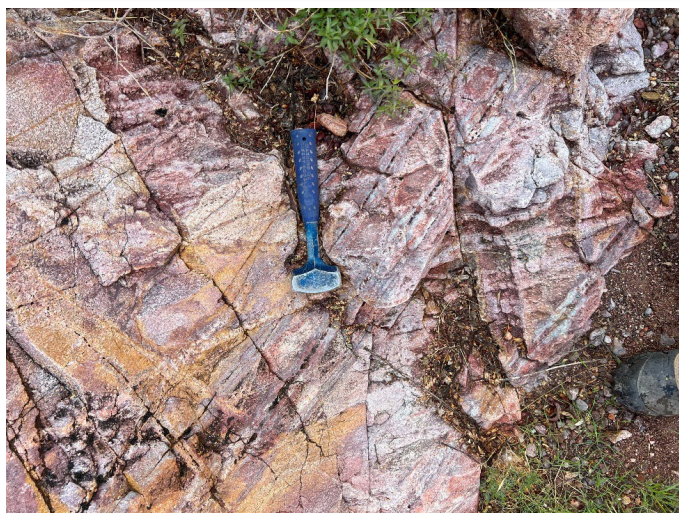
- Detailed drone magnetics reveals that the mapped Wolverine porphyry dykes, veining and alteration are associated with a zone of magnetic anomalies ~1,200m x 250m in extent
- Same Laramide age as other major Co/Mo porphyry deposits in SW USA / Mexico
- Drill permit now covers 4 sites + water bore
- Next steps include:
  - Install water bore
  - DD contractor selection
  - Detailed surface geochemistry
  - Geophysical surveys (IP / MT)



# SUN DEVIL & AZTECS

Drill targets under intense stockwork veining & high-level alteration

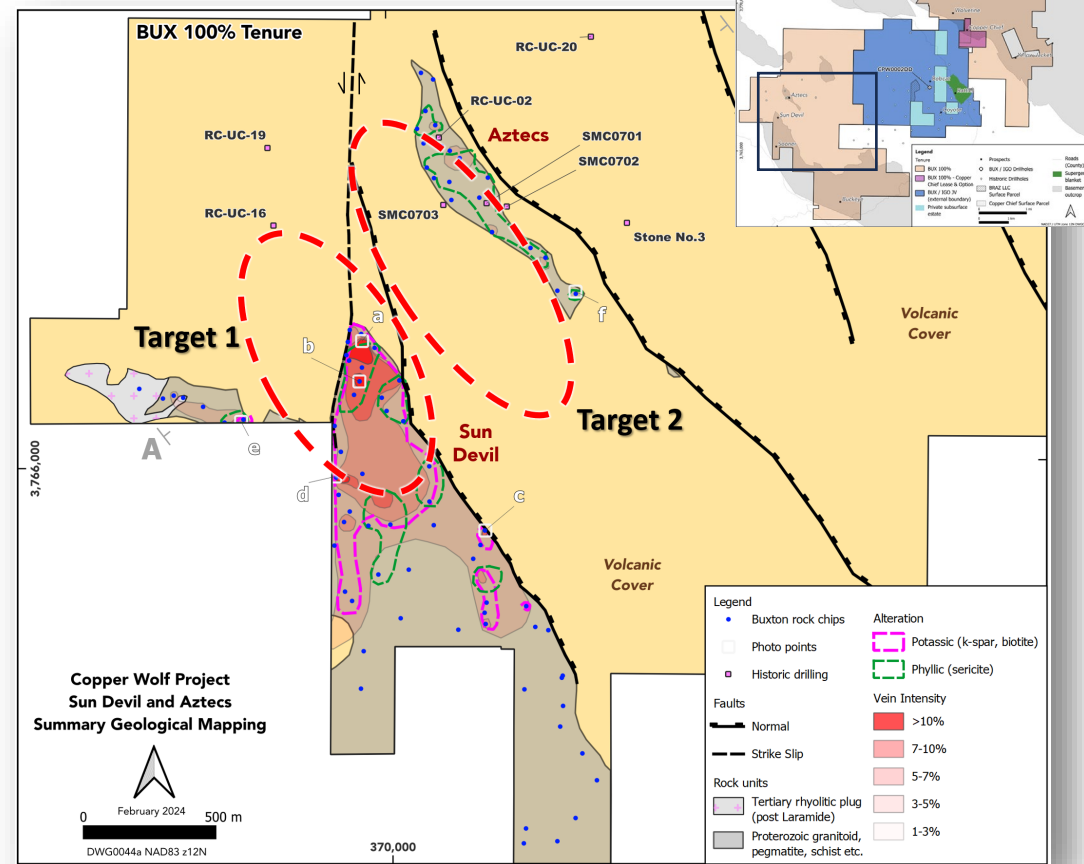
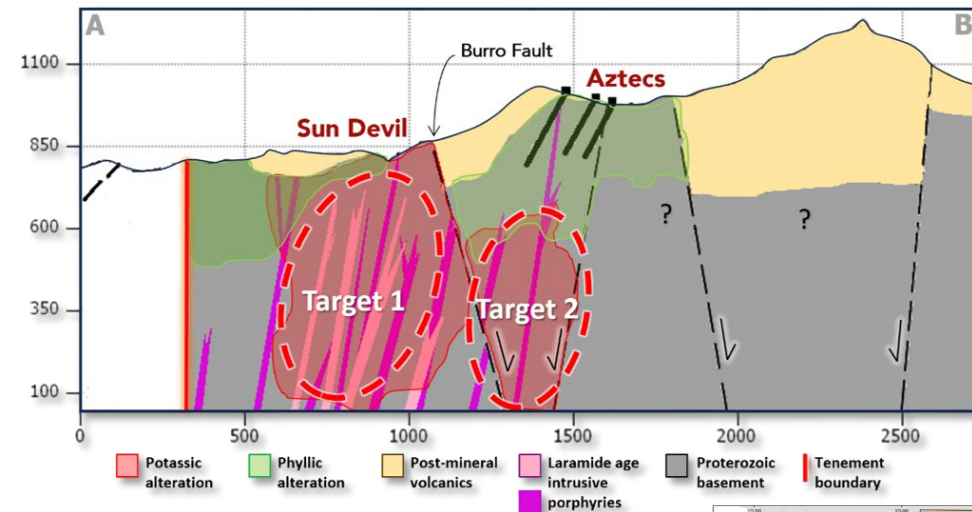
- Similar targets emerging at Sun Devil and Aztecs, 7 km from Wolverine, also on 100% BUX tenure
- Highly anomalous Cu, Mo and Ag confirmed at surface with lab assays up to 3.08% Cu, 156 ppm Mo and 9.34 ppm Ag
- Previous Aztecs drilling in leached phyllic alteration which indicates the prospective potassic zone is preserved at depth (previous drilling was too shallow)
- No previous drilling at Sun Devil



Sun Devil Prospect: Intense quartz + iron oxide stockwork veining with k-feldspar alteration overprinted by sericite



Sun Devil prospect sample DC0107 - 30,800 ppm (3.08%) Cu & 58 ppm Mo. Highly weathered ?Proterozoic intrusive rock with stockwork veining and supergene chrysocolla overprint.

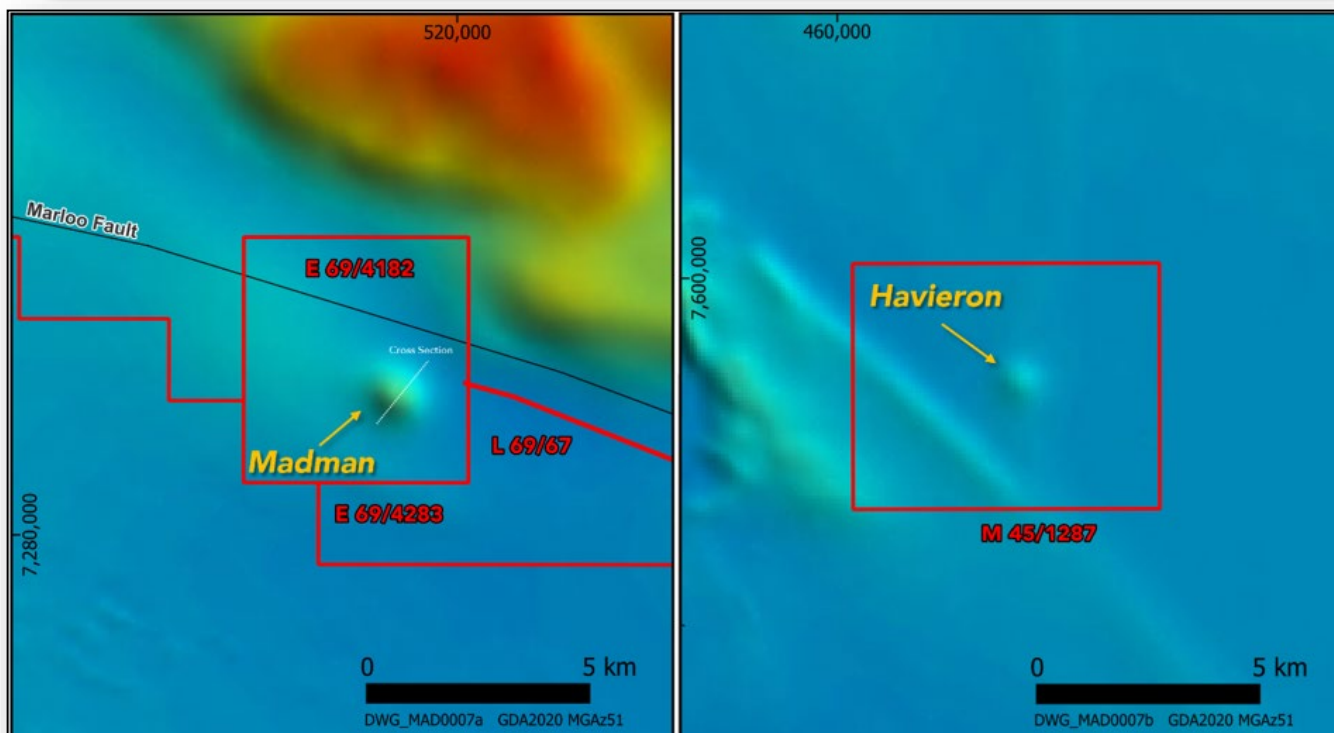
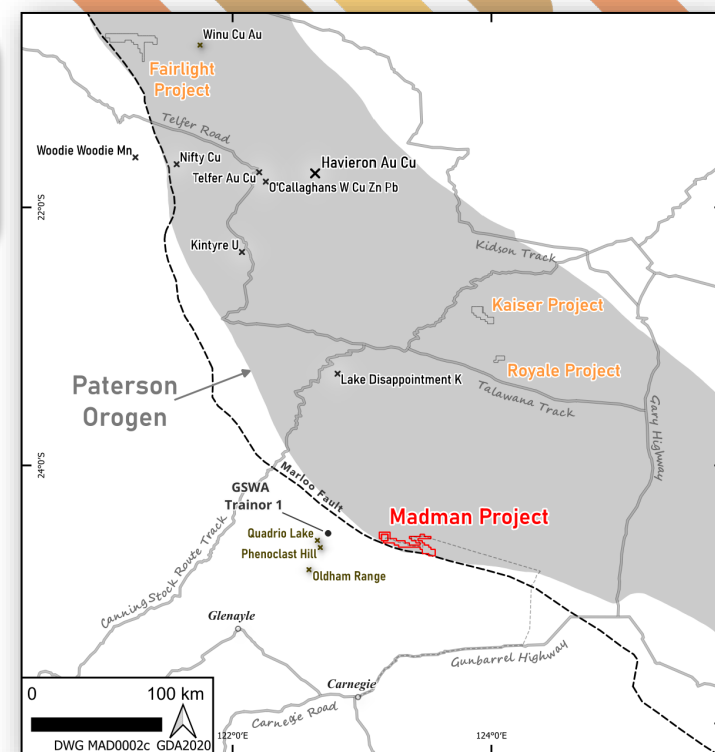


## MADMAN Shallow Havieron look-alike

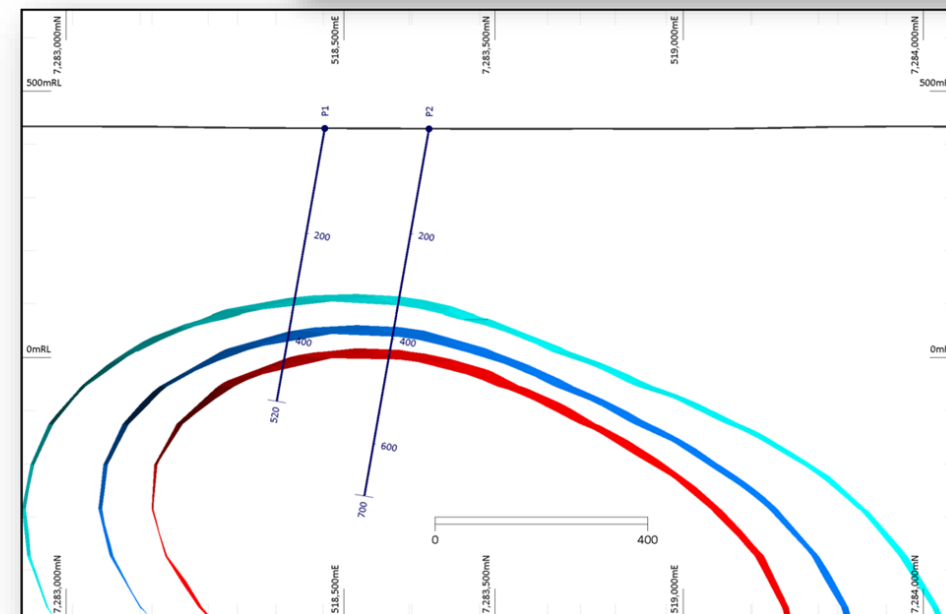
- Discrete magnetic target under shallow cover
- GSWA interpret timing of nearby Au mineralisation (Quadrio Lake, Phenoclast Hill, Trainor 1) as identical to Paterson Orogen gold deposits (~650 Ma)
- No previous on-ground exploration at Madman
- Heritage Survey complete, clearances in hand, earthworks complete, drilling expected to June 2026

The **Paterson Orogen** hosts >44 Moz gold endowment, much of which has only been recently discovered...

**Telfer:** 8.0 Moz Au + 15.6 Moz production  
**Winu:** 8.0 Moz Au, 2.9 Mt Cu, 52 Moz Ag  
**Havieron:** 6.9 Moz Au, 275 kt Cu  
**Citadel:** 2.8 Moz Au, 172 kt Cu  
**North Telfer:** 2.9 Moz Au



GSWA statewide magnetics image

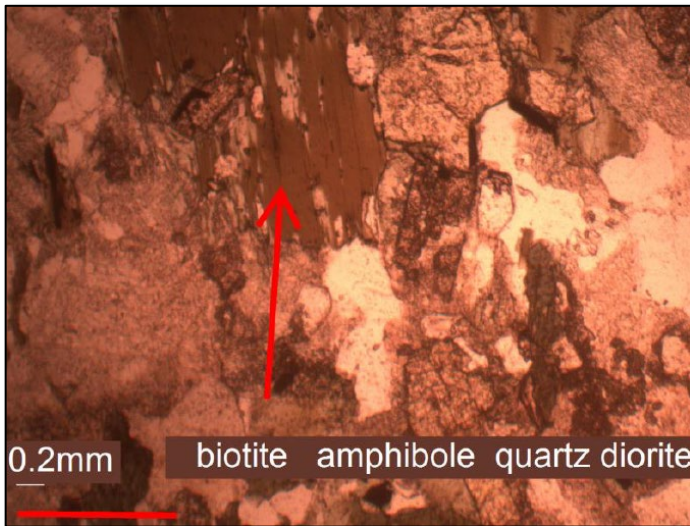


Madman Project detailed magnetics inversion

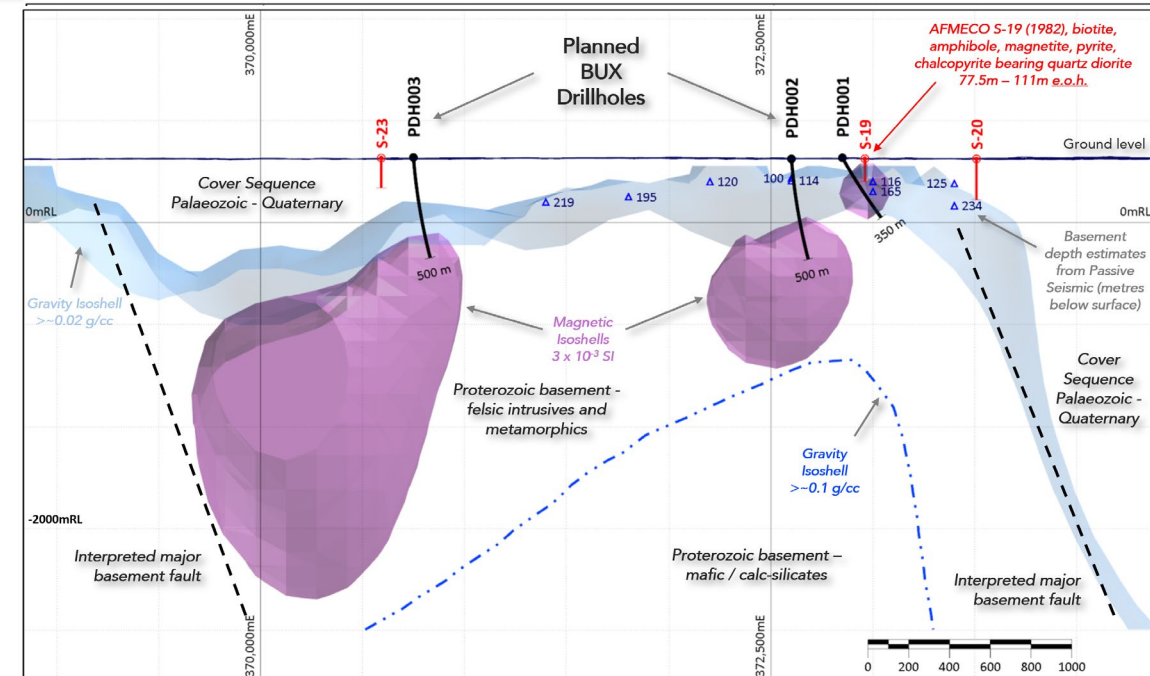
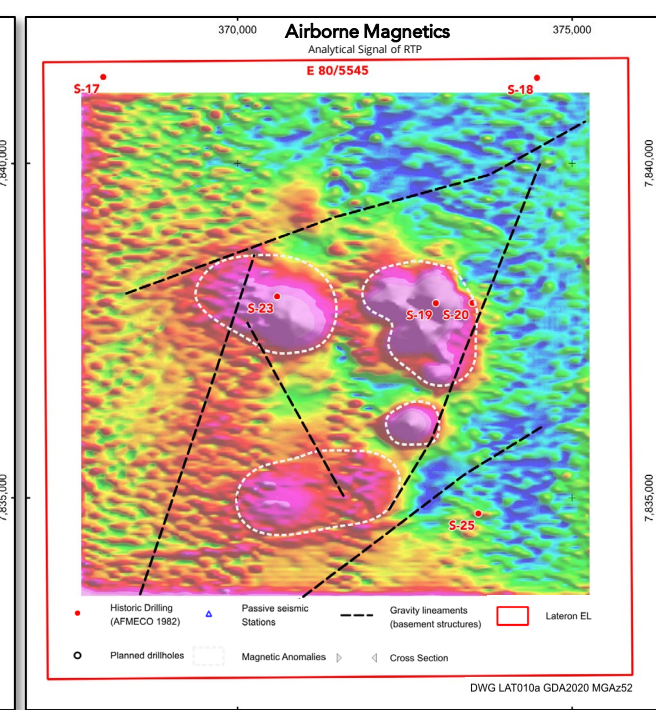
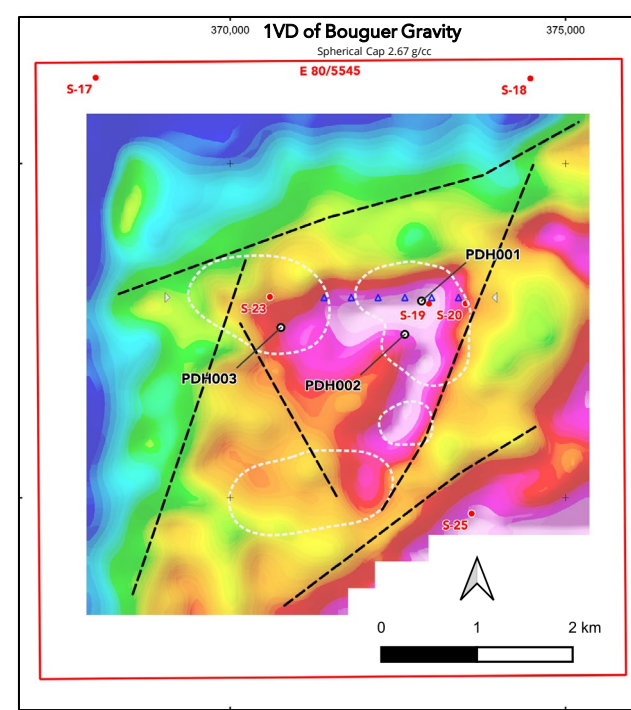
FOCUSED ON DISCOVERY

## LATERON Shallow Cu/Au drill targets

- Shallow magnetic targets with excellent Cu/Au fertility indicators
- AFMECO 1982 intersected shallow basement rocks at 77.5m in hole S-19
- New petrology indicates the magnetic features are caused by amphibole-magnetite titanite-pyrite-chalcopyrite bearing dioritic intrusives
- New Gravity and passive seismic surveys completed, high resolution magnetics already in open-file – drill targets defined
- Heritage Agreement negotiations nearing completion
- IP + drilling program ~\$500k (inc. heritage/monitoring & access works)



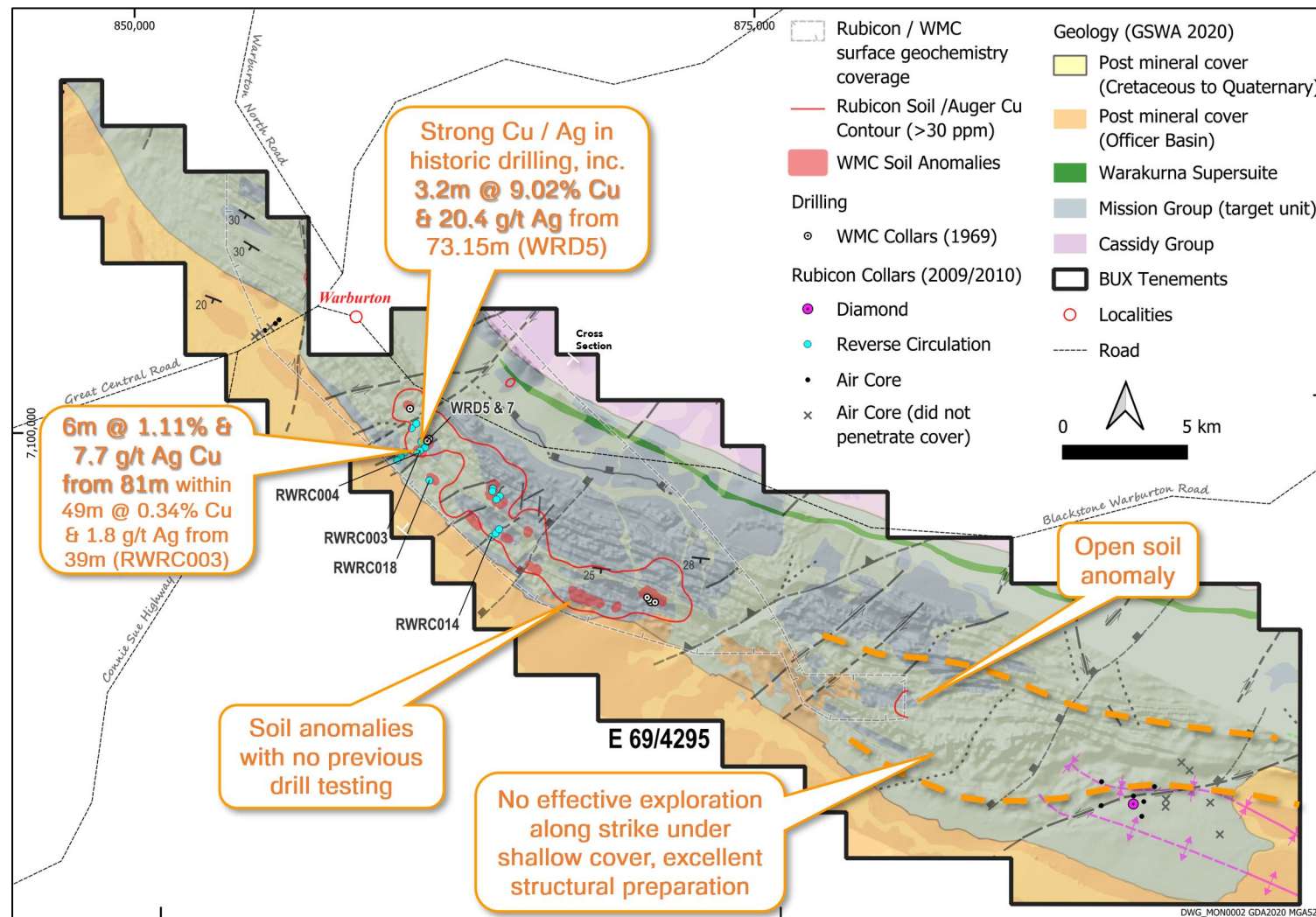
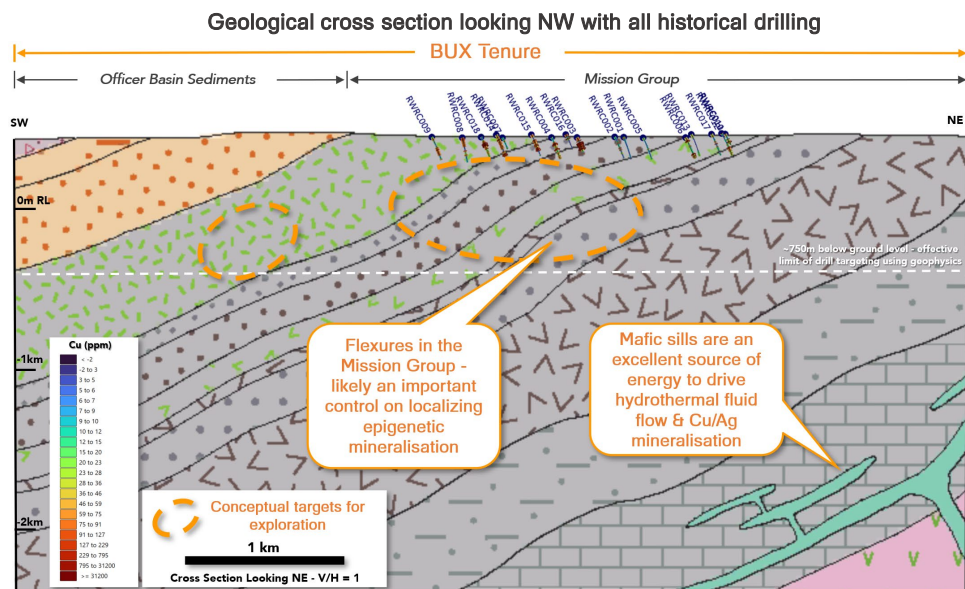
Petrology results of core fragments recovered by BUX from AFMECO's 1982 S-19 drill site



Lateron magnetic anomalies with planned drillholes

## MONTELLO High grade historic Cu/Ag, untested extensions under shallow

- Strong geological similarities to White Cliffs & Somerset
- Historic assays including
  - 3.2m at 9.02% Cu & 20.4 g/t Ag from 73.15m
  - 49m @ 0.34% Cu from 39m including 6m @ 1.11% Cu & 7.7 g/t Ag from 81m
- Very low exploration maturity under thin cover
- Currently undertaking heritage assessments



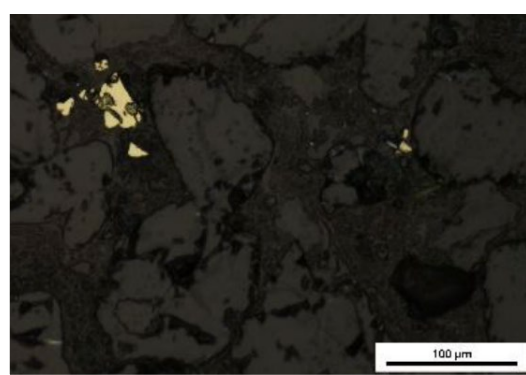
# X BUXTONRESOURCES

FOCUSED ON DISCOVERY

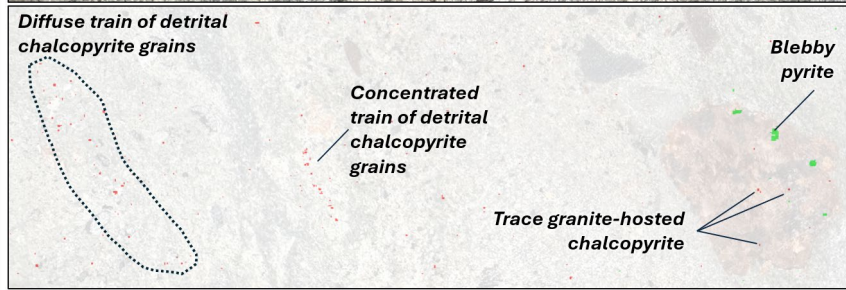
## CENTURION

Tiger by the tail

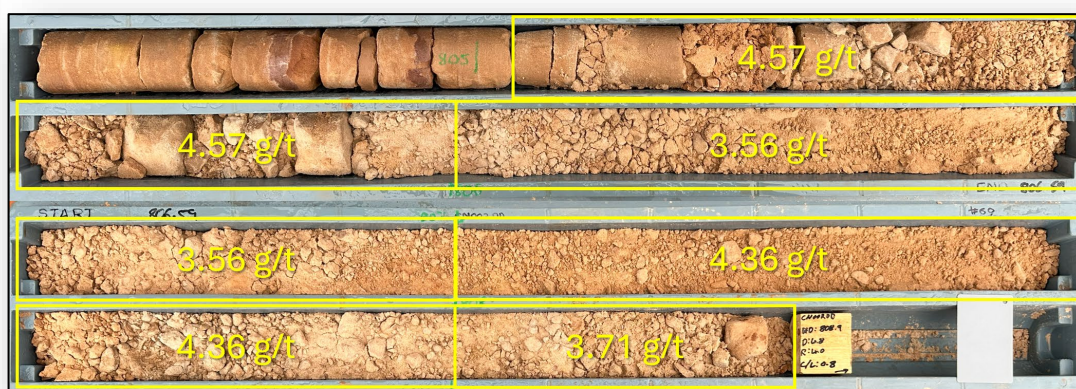
- Semi-coincident magnetic & gravity anomaly 3.5 x 5 km
- Maiden drilling program completed July-August 2025 - abandoned in loose sands at ~805m depth
- These sands have **strong pathfinder geochemistry** (Ag with Cu, Mo, Re, Zn and W), **Cu/Au/Ag/Bi bearing detrital sulphides** and **~650 Ma oxidized zircons** (Paterson Orogen Au age)
- The fragile sulphides being hosted in a coarse sandy sediment (high energy) suggests we are **close to the source**
- Detailed MT and passive seismic under consideration to refine drilling targets



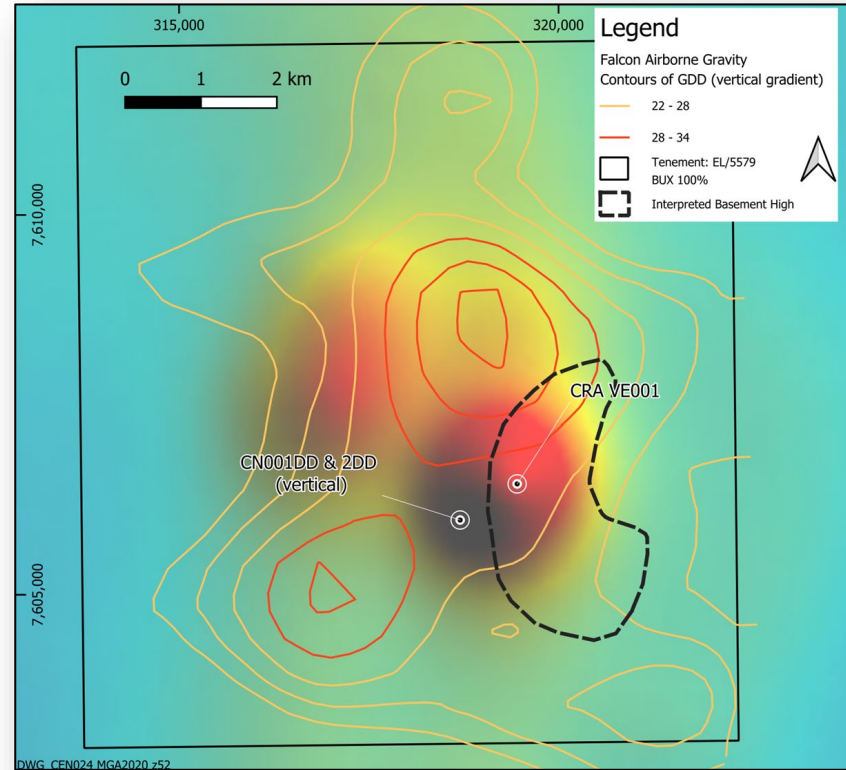
Detrital sulphides from CN002DD ~799.5m depth (photomicrograph)



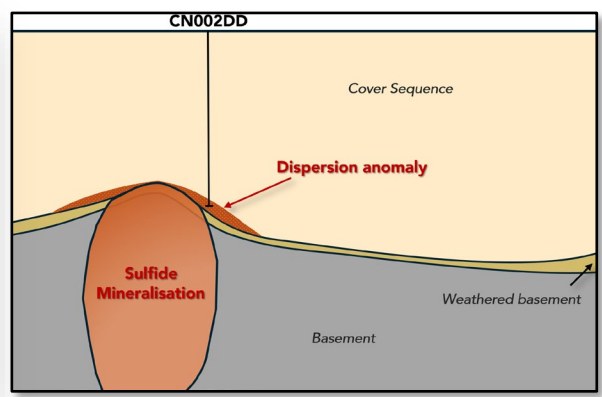
Core photograph CN002DD ~799.5m depth with uXRF overlay



Silver assay results – CN002DD End of Hole



Centurion - open file magnetic anomaly image & gravity contours



Conceptual cross-section

# DIRECTORS / SENIOR MANAGEMENT



**GERVAISE HEDDLE**  
Non-Executive Chair

Gervaise is the former Chief Executive Officer of Greatland Gold plc (May 2016 – March 2021). During his tenure, he led Greatland through the acquisition and discovery of the Havieron gold-copper deposit in Western Australia and was instrumental in establishing a joint venture with Newcrest Mining Limited for the development of the deposit.

Under his leadership, Greatland's share price increased by over 10,000% (more than 100 times).

Prior to Greatland, Gervaise served as a Division Director at Macquarie Funds Group, and a Fund Manager and Director at Merrill Lynch Investment Managers.



**MARTIN MOLONEY**  
Managing Director

Marty is a geologist with deep experience in minerals exploration for a variety of commodities including Au, Ag, Cu, Mo, Pb / Zn, U, Sn, Ni and graphite. He has extensive resource project management experience from greenfields to resource definition in a variety of jurisdictions.

Marty has worked for major mining houses (Mt Isa Mines), junior explorers (Thundelarra), junior developers (Dalradian Gold), mid-tier producers (Iluka), a boutique generative consultancy, in private equity, plus with a number of geophysical and related technical service providers to the mining industry.

Mr Moloney joined Buxton in April 2019 as Chief Geologist, transitioned to Chief Executive Officer in August 2024 and has been Managing Director since October 2025.



**STUART FOGARTY**  
Non-Executive Director

Stuart has over 20 years of exploration experience with BHP Billiton and Western Mining Corporation. Stuart was BHP's Senior Exploration Manager for North and South America. Stuart has a very strong background in nickel exploration, having commenced his career at Kambalda Nickel Operations in 1994.

Stuart has had senior roles with BHP including Senior Geoscientist for nickel exploration in the Leinster and Mt Keith region, Project Manager WA Nickel Brownfields and Regional Manager Australia – Asia where he was responsible for \$100 million per annum exploration budget

Stuart currently serves as the Managing Director of Duketon Mining (ASX:DKM).



**SAM WRIGHT**  
Company Secretary

Founder and Managing Director of Straight Lines Consultancy, an advisory business providing services to ASX listed companies. Sam has extensive experience in relation to public company responsibilities, including ASX and ASIC compliance, control and implementation of corporate governance, statutory financial reporting and shareholder relations with both retail and institutional investors.

Sam is currently a director of ASX listed companies; Great Dirt Resources Ltd, Reach Resources Ltd and Structural Monitoring Systems Plc. Mr Wright is also currently Company Secretary for ASX and London Stock Exchange dual listed company, Resolute Mining Ltd.

Sam has also filled the role of Director and Company Secretary with companies in Australia, North America and the UK.

## Forward Looking Statements

This presentation has been prepared by Buxton Resources (“Buxton”). The information contained in this presentation is a professional opinion only and is given in good faith. Certain information in this document has been derived from third parties and though Buxton has no reason to believe that it is not accurate, reliable or complete, it has not been independently audited or verified by Buxton. Any forward-looking statements included in this document involve subjective judgement and analysis and are subject to uncertainties, risks and contingencies, many of which are outside the control of, and may be unknown to, Buxton. In particular they refer only to the date of this document, they assume the success of Buxton’s strategies, and they are subject to significant regulatory, business, competitive and economic risks and uncertainties. Actual future events may vary materially from those in the forward looking statements. Recipients of this document are cautioned not to place undue reliance on such forward-looking statements. Buxton makes no representation or warranty as to the accuracy, reliability or completeness of information in this document and does not take responsibility for updating any information or correcting any error or omission which may become apparent after this document has been issued. To the extent permitted by law, Buxton and its officers, employees, related corporations and agents disclaim all liability, whether direct, indirect or consequential for any loss or damage arising out of, or in connection with, any use or reliance on this presentation or information. All amounts are in A\$ unless otherwise stated

## Competent Persons Statement

The information in this report that relates to Exploration Results is based on information compiled by Mr Martin Moloney, Member of the Australasian Institute of Geoscientists. Mr Moloney is a full-time employee of Buxton Resources Limited. Mr Moloney has sufficient experience which is relevant to the activity being undertaken to qualify as a “Competent Person”, as defined in the 2012 edition of the Joint Ore Reserves Committee (JORC) Australasian Code for Reporting of Exploration Results, Mineral Resources and Ore Reserves. Mr Moloney consents to the inclusion in this report of the matters based on the information in the form and context in which it appears. All exploration results and geological information has been previously reported in numerous Company ASX announcements under the 2012 JORC Code. This information has not materially changed since it was initially reported.

## Validity of Referenced Results

Buxton confirms that it is not aware of any new information or data that materially affects the information from previous ASX announcements which has been referenced in this announcement.

### AUTHORISED BY

The MD on behalf of the Board of  
Directors of Buxton Resources.

### REGISTERED OFFICE

15 Robinson Avenue  
Belmont WA 6104  
Phone +61 (0)8 9380 6063  
Postal Address PO Box 661 Nedlands WA 6909  
Email: [info@buxtonresources.com.au](mailto:info@buxtonresources.com.au)  
Website: [www.buxtonresources.com.au](http://www.buxtonresources.com.au)

FOCUSED ON DISCOVERY

Sign up to the BUX InvestorHub  
for alerts and in-depth coverage

