



ADVANCING THE

Northern Territory's Next DSO Lithium Development

ASX:LPM

JUNE 2026



Important Information

Forward Looking Statements

Certain statements contained in this presentation, including information as to the future financial or operating performance of Lithium Plus Minerals Ltd (Lithium Plus) and its projects, are forward looking statements. Such forward looking statements:

- include, among other things, statements regarding incomplete and uncertain proposals or targets, production and prices, operating costs and results, capital expenditures, and are or may be based on assumptions and estimates related to future technical, economic, market, political, social and other conditions;
- are necessarily based upon several estimates and assumptions that, while considered reasonable by Lithium Plus, are inherently subject to significant technical, business, economic, competitive, political and social uncertainties and contingencies; and
- involve known and unknown risks and uncertainties that could cause actual events or results to differ materially from estimated or anticipated events or results reflected in such forward-looking statements.

Lithium Plus disclaims any intent or obligation to update publicly any forward-looking statements, whether as a result of new information, future events or results or otherwise. The words “believe”, “expect”, “anticipate”, “indicate”, “contemplate”, “target”, “plan”, “intends”, “continue”, “budget”, “estimate”, “may”, “will”, “schedule” and similar expressions identify forward looking statements. All forward looking statements made in this presentation are qualified by the foregoing cautionary statements. Recipients are cautioned that forward looking statements are not guarantees of future performance and accordingly investors are cautioned not to put undue reliance on forward looking statements due to the inherent uncertainty therein.

Disclaimer

No representation or warranty, express or implied, is made as to the fairness, accuracy, completeness or correctness of the information, opinions and conclusions contained in this presentation. To the maximum extent permitted by law, none of Lithium Plus, its directors, employees or agents, nor any other person accepts any liability, including, without limitation, any liability arising out of fault of negligence, for any loss arising from the use of the information contained in this presentation. In particular, no representation or warranty, express or implied is given as to the accuracy, completeness or correctness, likelihood of achievement or reasonableness or any forecasts, prospects or returns contained in this presentation nor is any obligation assumed to update such information. Such forecasts, prospects or returns are by their nature subject to significant uncertainties and contingencies.

The information contained in this presentation is for informational purposes only and does not constitute an offer to issue, or arrange to issue, securities or other financial products. The information contained in this presentation is not investment or financial product advice and is not intended to be used as the basis for making an investment decision. The presentation has been prepared without considering the investment objectives, financial situation or needs of any particular person. Before making an investment decision, you should consider, with or without the assistance of a financial adviser, whether an investment is appropriate considering your particular investment needs, objectives and financial circumstances. Past performance is no guarantee of future performance.

Proximate Statements

This announcement contains references to JORC Mineral Resources derived by other parties either nearby or proximate to the Project and includes references to topographical or geological similarities to that Project. It is important to note that such discoveries or geological similarities do not in any way guarantee that the Company will have any success or similar success in delineating a JORC compliant Mineral Resource on the Project, if at all.

Exploration by Other Explorers

This presentation contains information sourced from the reports of Other Explorers. References to the original reports are provided as footnotes where the information is cited in this presentation. Lithium Plus does not vouch for the accuracy of these reports. Lithium Plus has taken the decision to include this information as it is in the public domain and as we assess it to be of relevance to shareholders and investors.

The Company confirms that it is not aware of any new information or data that materially affects the information cross referenced in this announcement. The Company confirms that the form and content in which the Competent Person's findings are presented have not been materially modified from the original announcements.





Investment Highlights

- **Experienced Board and Management**
Proven capability for project delivery and discovery
- **Targeting near term cash flow**
Low-capex DSO lithium development opportunity
- **Premier flagship project location**
Close to CXO's Finnis Operation, Darwin Port and China/Asia Shipping Route
- **Multi-commodity exploration**
Highly prospective and diversified growth potential beyond initial DSO lithium operation
- **Strong foundation for growth**
Strategic share register, tight capital structure and low market valuation
- **Clear valuation drivers**
Leveraged to DSO delivery and exploration success with lithium sector tailwinds



Corporate Overview

Capital Structure

■ Share price (5 June 2026)

A\$0.105

■ Shares on issue

154.34M

■ Market cap

A\$16.2M

■ Cash¹

A\$3.93M

■ Debt

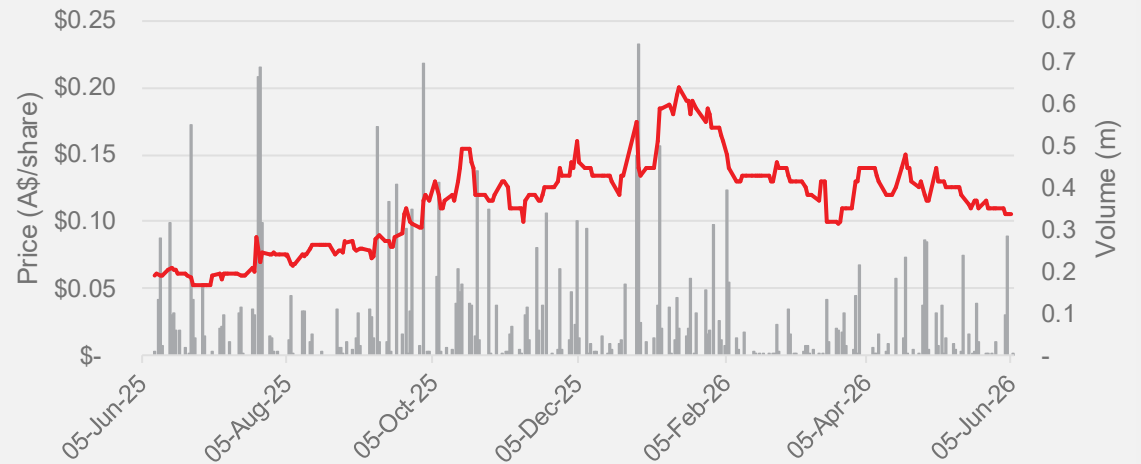
NIL

■ Enterprise Value

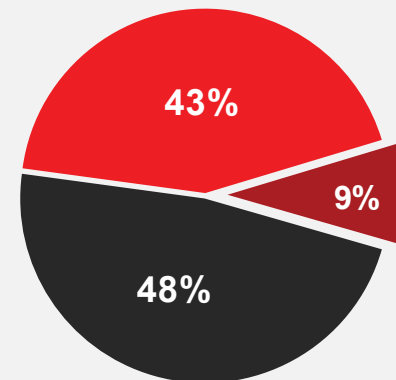
A\$12.3M

1. Cash at 31 March 2026 plus \$2.15m placement – refer to LPM ASX Announcement 17 April 2026

Share Price Performance



Register composition



- Board and management
- Other
- Suzhou CATH Energy Technologies

9%

SUZHOU CATH ENERGY TECHNOLOGIES
IN PARTNERSHIP WITH

CATL

STRATEGIC CORNERSTONE INVESTOR WITH IPO



Board and Management

Proven capability for project delivery and discovery



Dr Bin Guo
Executive Chairman

- Founder and Executive Chairman of Lithium Plus
- PhD in Geophysics with more than 20 years experience in mining and finance
- Wide range of technical and commercial knowledge gained at SRK Consulting, CITIC Securities and Mining One Consultants
- Non-Executive Chair of Moonlight Resources, previously Non-Executive Director of North American Lithium



Mr Simon Kidston
Non-Executive Director

- Finance professional with more than 30 years' global experience with Macquarie Bank, HSBC and Helmsec Global Capital Limited
- Founding Director of renewable energy company Genex Power (Sold July 2024 for \$1.2 billion EV)
- Experienced company director including current Chairman roles at Greentech Metals, Energy Transition Minerals, Sparc Technology and Non-Executive Director of Moonlight Resources



Dr Jason Berton
Non-Executive Director

- Structural geologist with over 20 years mining and exploration experience at Homestake, Barrick, BHP and SRK Consulting
- Current Managing Director of PolarX Limited, and former Managing Director of ASX-listed Estrella Resources
- PhD in Geology and member of AusIMM



Mr George Su
Non-Executive Director

- Over 35 years' business experience in the Asia-Pacific region
- Current CEO and Managing Director of Richlink Australia
- Former country head of Australian operations at CITIC Securities and independent director of Macquarie Bank's China property fund
- Current Independent Director of YPB Group Ltd, an ASX listed technology company



Dr Bryce Healy
GM of Exploration & Development

- Experienced Exploration Geologist with a PhD in Geology specialising in granite petrology
- A member of the AIG with over 20 years industry experience in Exploration Management and Technical Director roles, including 13 years of consulting experience with SRK Consulting.
- Currently a director of exploration consultancy Noventum Group and COO of Revolver Resources Ltd, Chief Geologist of Moonlight Resources



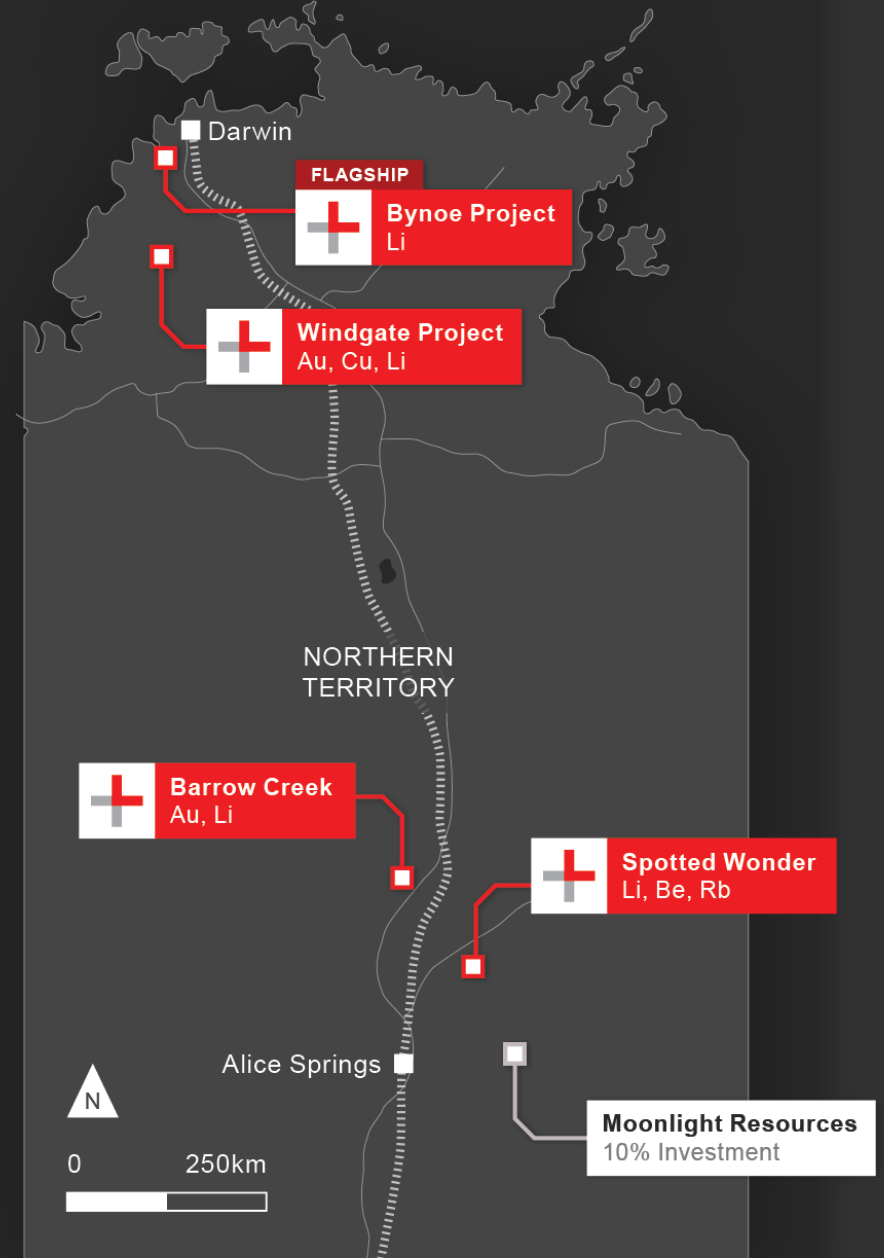
A Diversified Asset Portfolio

Advanced DSO Lithium Development

Plus gold-critical minerals exploration and investments

- Flagship Bynoe Lithium Project**
 - Lei Deposit - Maiden MRE of **4.1Mt at 1.43% Li₂O***
 - DSO development opportunity with exploration upside
- Wingate Project**
 - Underexplored ground with known pegmatites,
 - Gold & copper potential within historic Fletcher's Gully Gold Prospect
- Arunta Critical Minerals Project**
 - Spotted Wonder Project** - Proven lithium, beryllium, and rubidium mineralisation
 - Barrow Creek Project** - Area of historic tin and tantalum production

Moonlight Resources (ASX:ML8) Investment (LPM ~10%)
Gold-focused explorer with an active greenfield exploration program



* LPM ASX release dated 19 December 2023, "Maiden High-Grade Lithium Resource declared at Lei"

Riding the next lithium wave

195%

Lithium price recovery since 1 June 2025¹

2.5x

EV battery demand forecast to scale by 2030²

22–80kt

2026 lithium supply deficit forecasts³

“Global electric car sales are expected to grow to 23 million in 2026, representing 28% of total car sales.” IEA Global EV Outlook 2026²



Lithium Carbonate
12 Month Price Chart

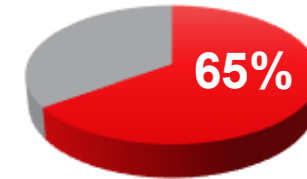


Source: Iress – CNY/T Daily Price chart

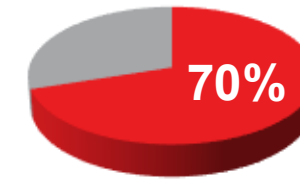
The logical DSO lithium destination



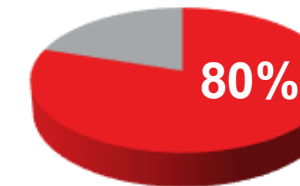
China is dominant across downstream processing



Global Lithium Refining Capacity⁴



Global EV Battery Market Share⁵



Global Battery Cell Production⁶

1. Iress 2. IEA Global EV Outlook 2026 - Electric Vehicle Batteries 3. 2026 supply deficits forecasts - UBS (22Kt) & Morgan Stanley (80Kt)
4. IEA Global EV Outlook 2026: Electric Vehicle Batteries 5. Benchmark Mineral Intelligence: The top five battery producers 6. IEA Global EV Outlook 2026: Electric Vehicle Batteries

Bynoe Lithium Project

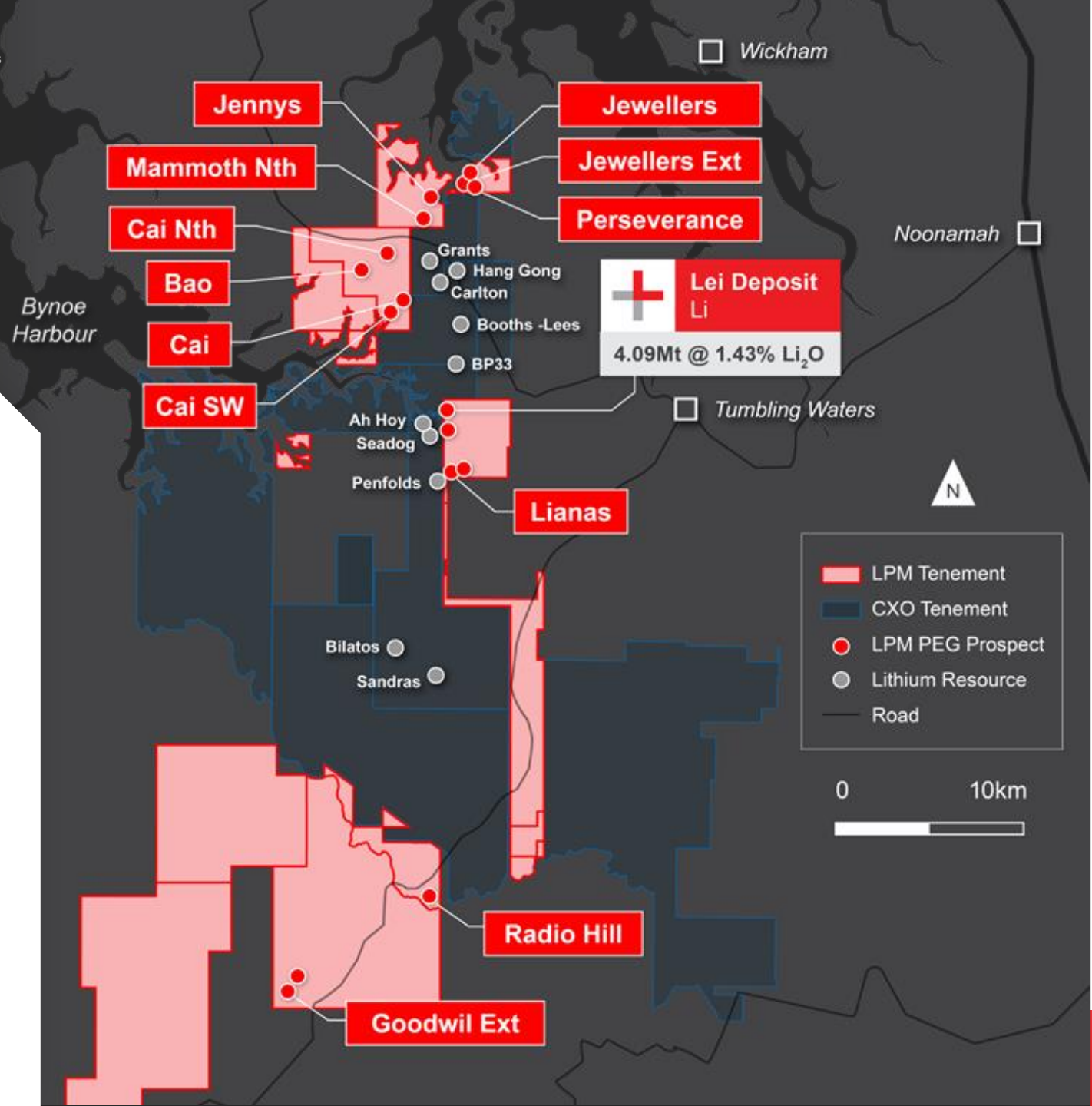
NORTHERN TERRITORY



Strategically positioned in a Tier-1 mining jurisdiction

- Proven area of lithium-rich pegmatites
- High-grade Lei Deposit MRE¹ an immediate pathway to cash flow
- Along strike from Core Lithium's (ASX: CXO) adjacent Finniss lithium mine
- 71.5km by road to Darwin Port, the gateway to Asia
- Significant exploration potential

1. LPM ASX announcement 19 December 2023 - Maiden High-Grade Lithium Resource declared at Lei





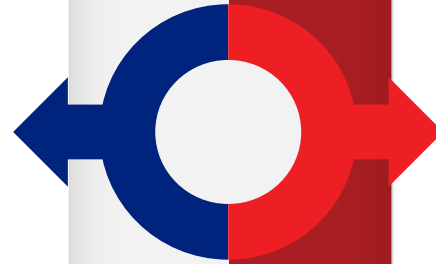
Development strategy optionality

DSO Only



Lei DSO Development and Nearby Exploration (Australia)

- **Lei Deposit** - Starter resource¹ an immediate pathway to cashflow with nearby exploration upside
- **Kings Landing** - Over 6 drill-ready outcropping pegmatites provide resource expansion potential



Integrated DSO + Processing Hub



DSO plus Offshore Flotation Processing and Trading Hub (China)

- Spodumene upgrading and trading hub within Dongying Comprehensive Bonded Zone - Shandong Province

1. LPM ASX announcement 19 December 2023 - Maiden High-Grade Lithium Resource declared at Lei



Lei Deposit DSO Mining Operation (Australia)

A low-cost, small scale underground development targeting near term cash flow

Scoping Study underway for DSO development, targeting:

- Low upfront capital
- Small footprint with low environmental impact
- Streamlined permitting and mine construction

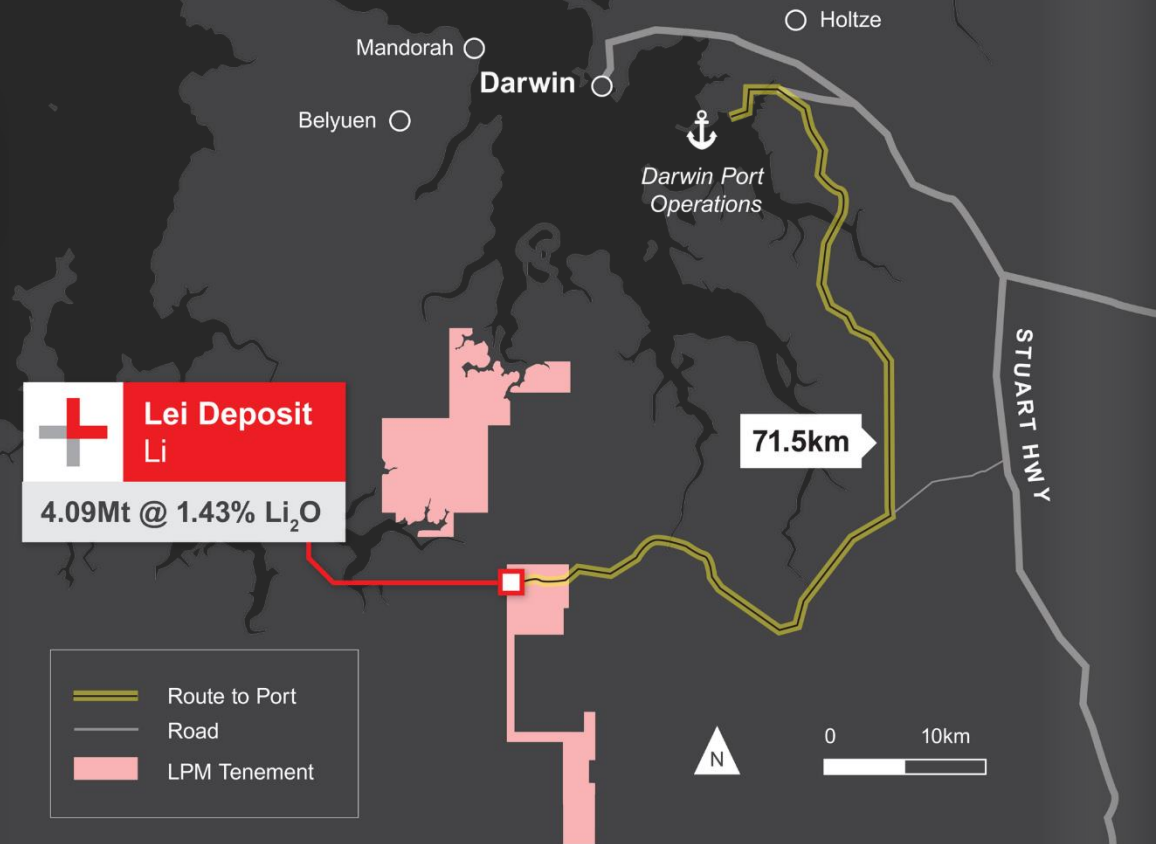
Internal mine planning, design and scheduling completed

Mining Lease granted¹ over Lei Deposit

- High-grade starter resource with nearby exploration upside

Advanced logistics and offtake discussions

- Non-Binding HOA with Port of Darwin²
- Offtake MOU executed with Canmax³



1. LPM ASX Announcement 20 October 2025 - Mining Lease Granted for Lei Lithium Project

2. LPM ASX announcement 29 April 2026 – Non-Binding Heads of Agreement with Darwin Port Operations

3. LPM ASX announcement 5 June 2024 - MOU executed with Canmax for spodumene offtake from Lei

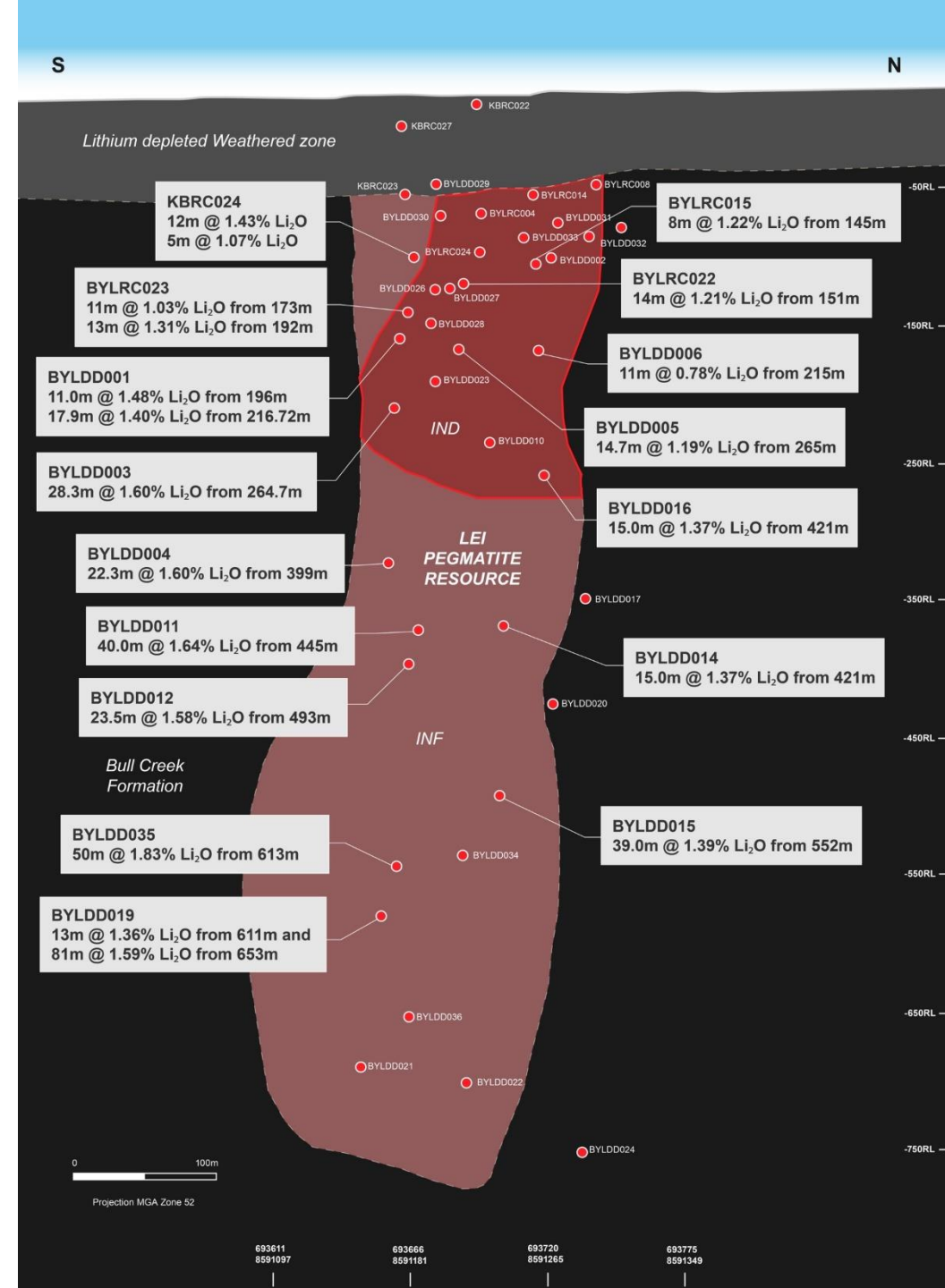
Lei Deposit – High-Grade Lithium

The foundation for DSO development

- **Similar geology to Core Lithium’s (ASX: CXO) Finnis mine**
 - Several prospects directly along strike from CXO’s BP33 deposit
- **2023 Maiden MRE¹ covers primary Lei pegmatite**
 - High-grade starter resource for low-cost DSO development
 - Secondary pegmatite a key follow up prospect targeting expansion
 - Both pegmatites open at depth, providing MRE growth potential
- **Positive metallurgy** - high-grade ore sample achieved **85.3% recovery** to a **6.12% Li₂O concentrate²**
- Drilling planned for Resource growth and testing multiple nearby priority targets

2023 Mineral Resource Estimate ¹ <i>At 0.5% Li₂O cutoff</i>	Category	Tonnes (m)	Li ₂ O (%)	Contained Li ₂ O (Kt)
	Indicated	0.42	1.22	5
	Inferred	3.67	1.48	53
	Total	4.09	1.43	58

1. LPM ASX Announcement 19 December 2023 – Maiden high-grade lithium resource declared at Lei
 2. LPM ASX announcement 16 October 2024 – Excellent outcomes from metallurgical test work on Lei deposit





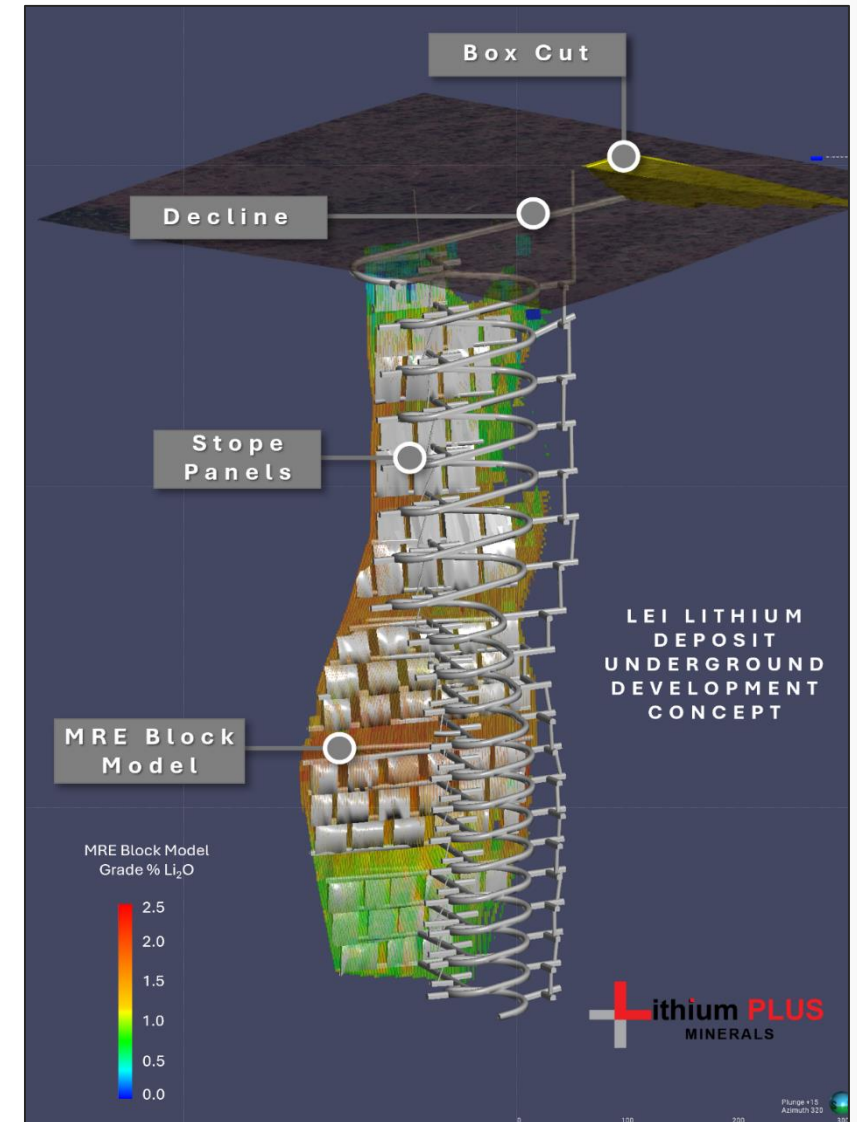
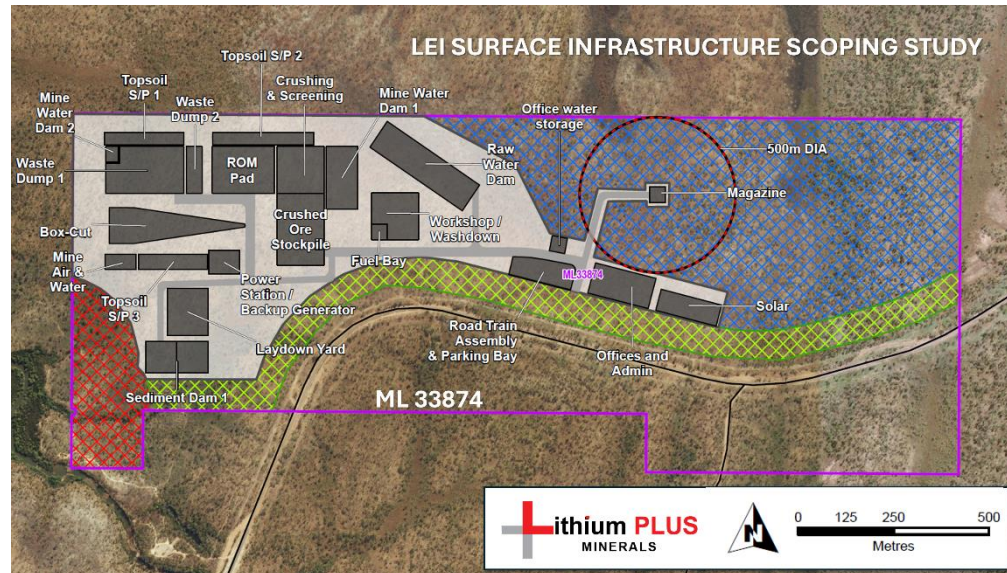
Lei Deposit

Pathway to DSO development

Progressing key regulatory approvals and de-risking activities

- EcOz Environmental Consulting preparing Supplementary Enviro Report (SER)
- Groundwater Modelling and Impact Assessment well advanced to support SER
- Additional assessments required under the positive Notice of Decision are well progressed

Socio-economic
Cultural heritage
Water quality



Kings Landing

Highly Prospective Exploration Upside

Over 6 drill-ready outcropping pegmatites provide resource expansion potential

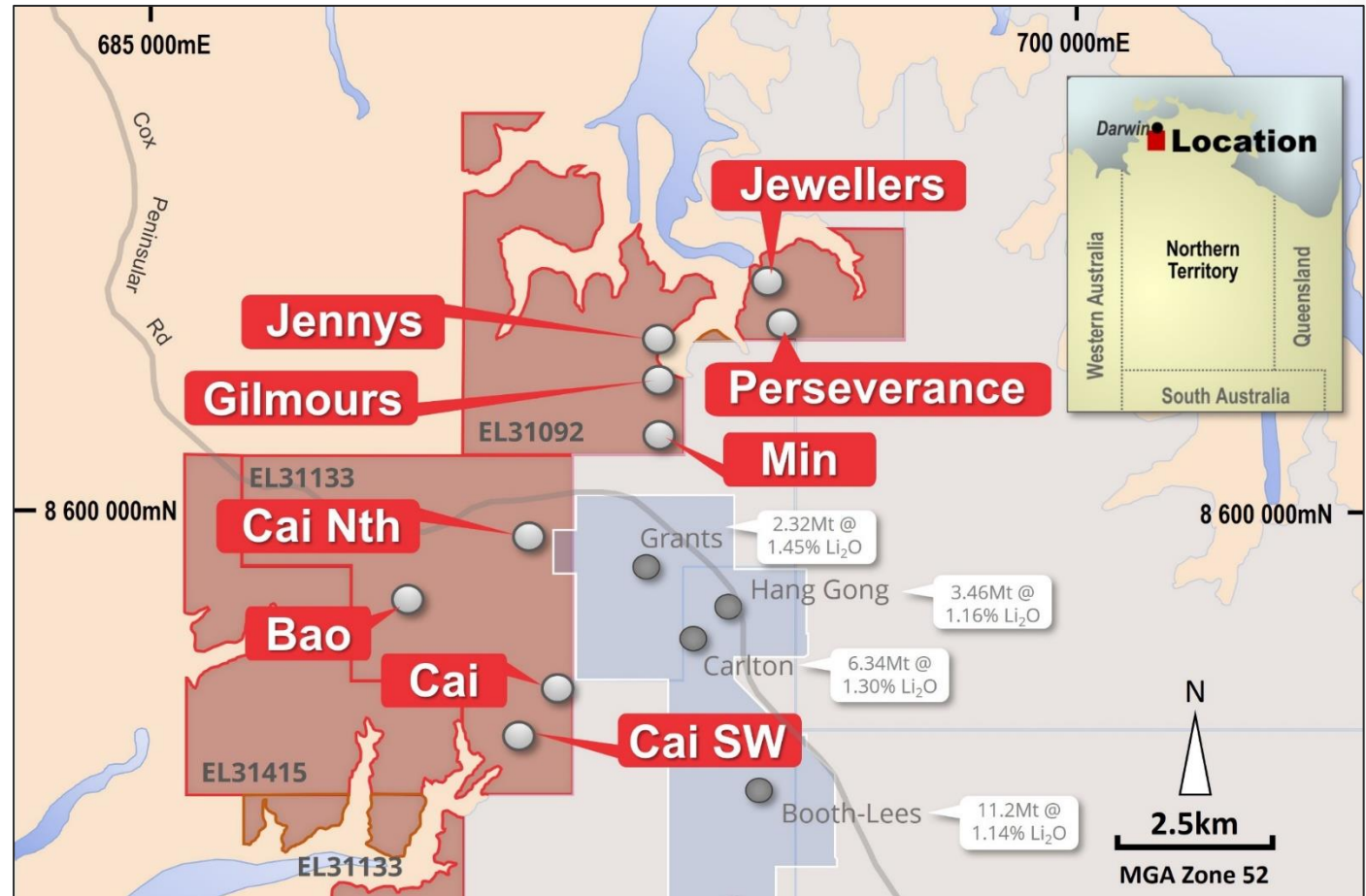
Surface mapping has identified several large weathered pegmatites:

- 500m long at Jewellers
- >100m long at Perseverance
- 250m long at Jennys

2023 drilling campaign at Perseverance¹ returned high-grade lithium:

- 19m @ 1.58% Li₂O from 148m, incl.
4m @ 2.62% Li₂O (BYPRC012)

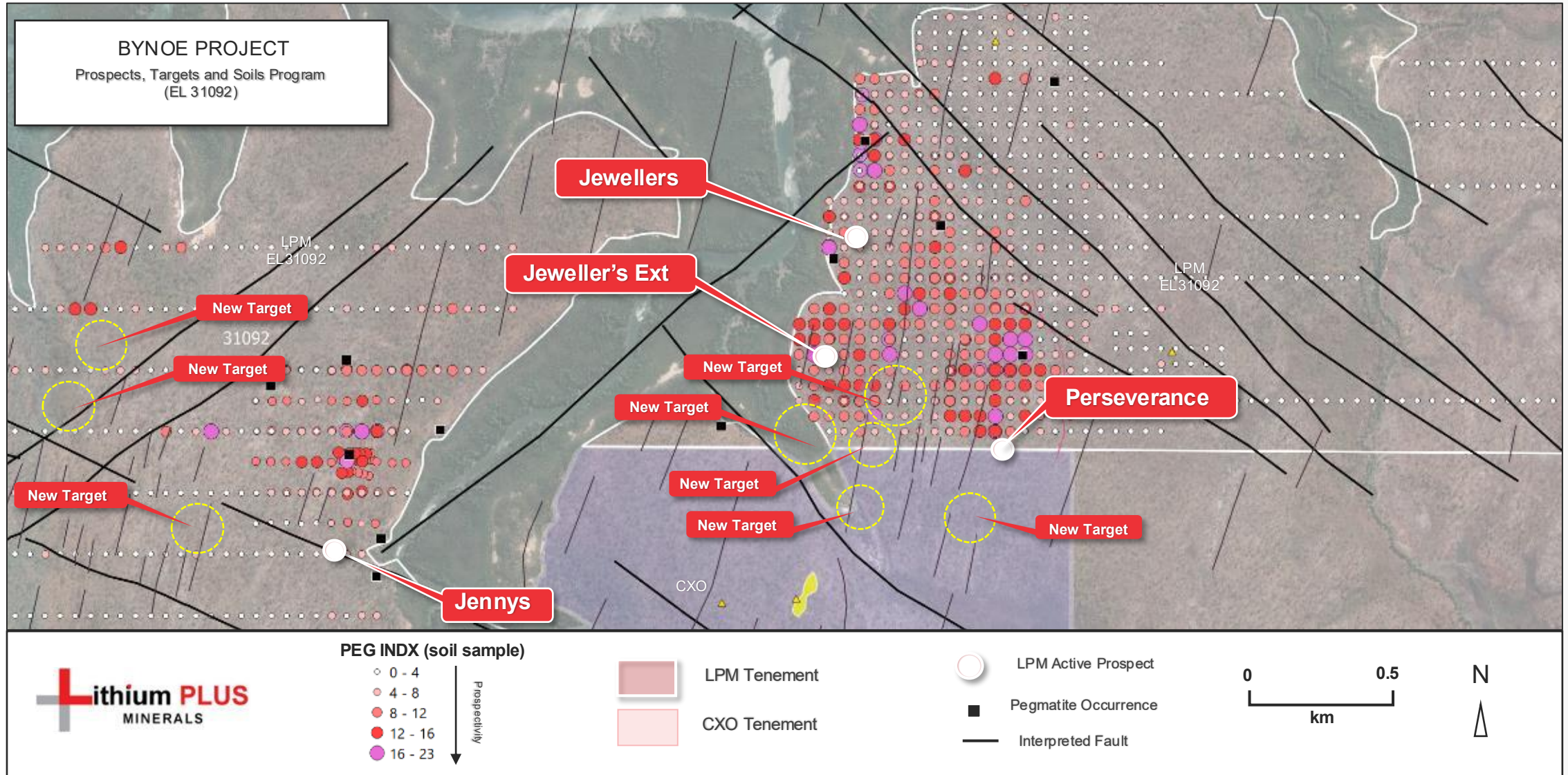
4 x large, high-priority pegmatite systems at Perseverance, Jewellers, Jewellers Extended and Jennys



1. LPM ASX Announcement 14 September 2023 - Drilling success at Perseverance Prospect Kings Landing Area



Kings Landing **Multiple high-conviction new targets defined**



Offshore Flotation Processing Hub (China)

Lithium ore processing and trading hub in Dongying Comprehensive Bonded Zone (CBZ) - Shandong Province

- **Investment Framework in place**
 - Non-binding Agreement¹ with Dongying CBZ Administrative Committee
 - For developing lithium processing and trading hub¹
- **Proposed vertically integrated project to include offshore trade, bonded warehousing, mineral processing and logistics**
 - Site within 2km of Dongying Port's 100,000-ton berth
- **Leverages Dongying Port infrastructure and logistics advantages for strategic access to domestic and global markets**
- **Commitment to downstream collaboration with Chinese partners**

1. LPM ASX Announcement 11 September 2025 - Sign investment framework agreement to develop processing hub

Wingate Gold Project

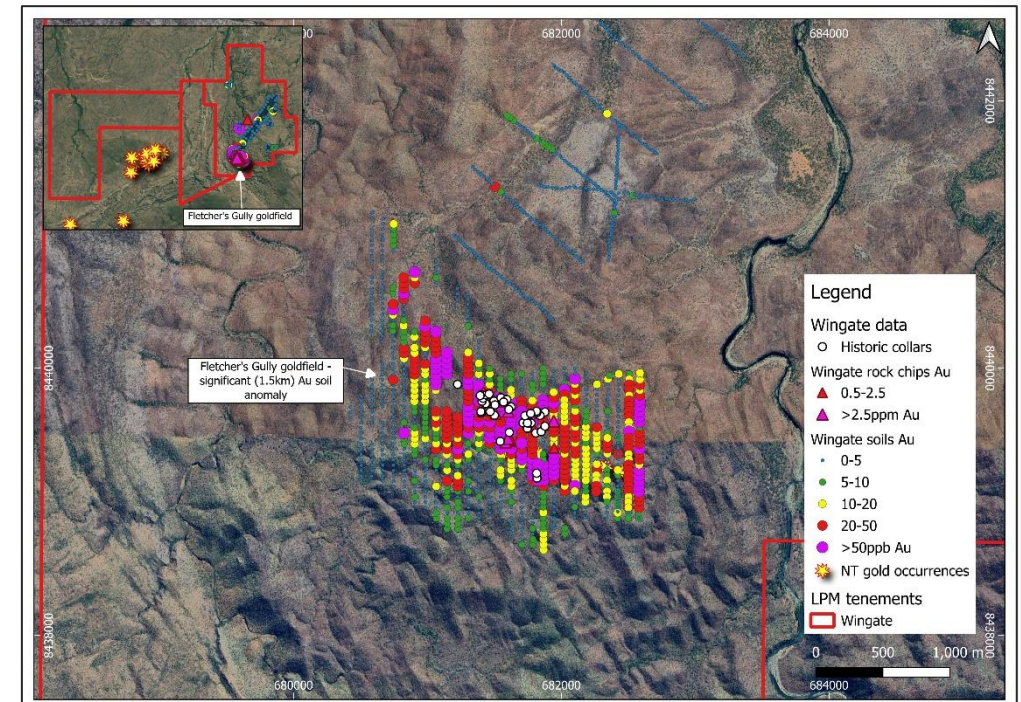
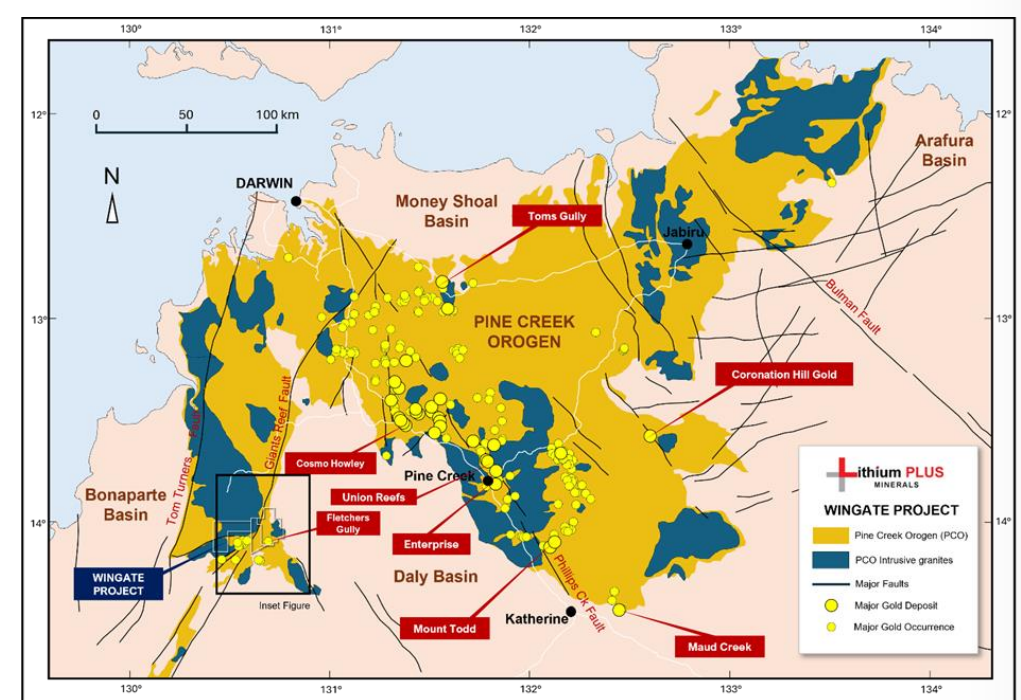
NORTHERN TERRITORY

Wingate Gold Project

Significant brownfields discovery potential

Underexplored ground, no drilling since 1995

- Fletchers Gully goldfield highly prospective for gold
- Historical high-grade production, ~2,500oz Au at exceptional grade of ~62g/t Au¹
- Significant historical drill results² beneath old workings:
 - **3m @ 10.1 g/t Au** from 62m (FP-1)
 - **14m @ 1.7 g/t Au** to EOH (FG19)
 - **14m @ 1.0 g/t Au** from 24m (FG17)
 - **20m @ 0.7 g/t Au** from 31m (FP-2)
- Large >40ppb gold-in-soil anomaly extends over 1,500m strike, up to 450m wide and remains open, hosting several historical workings



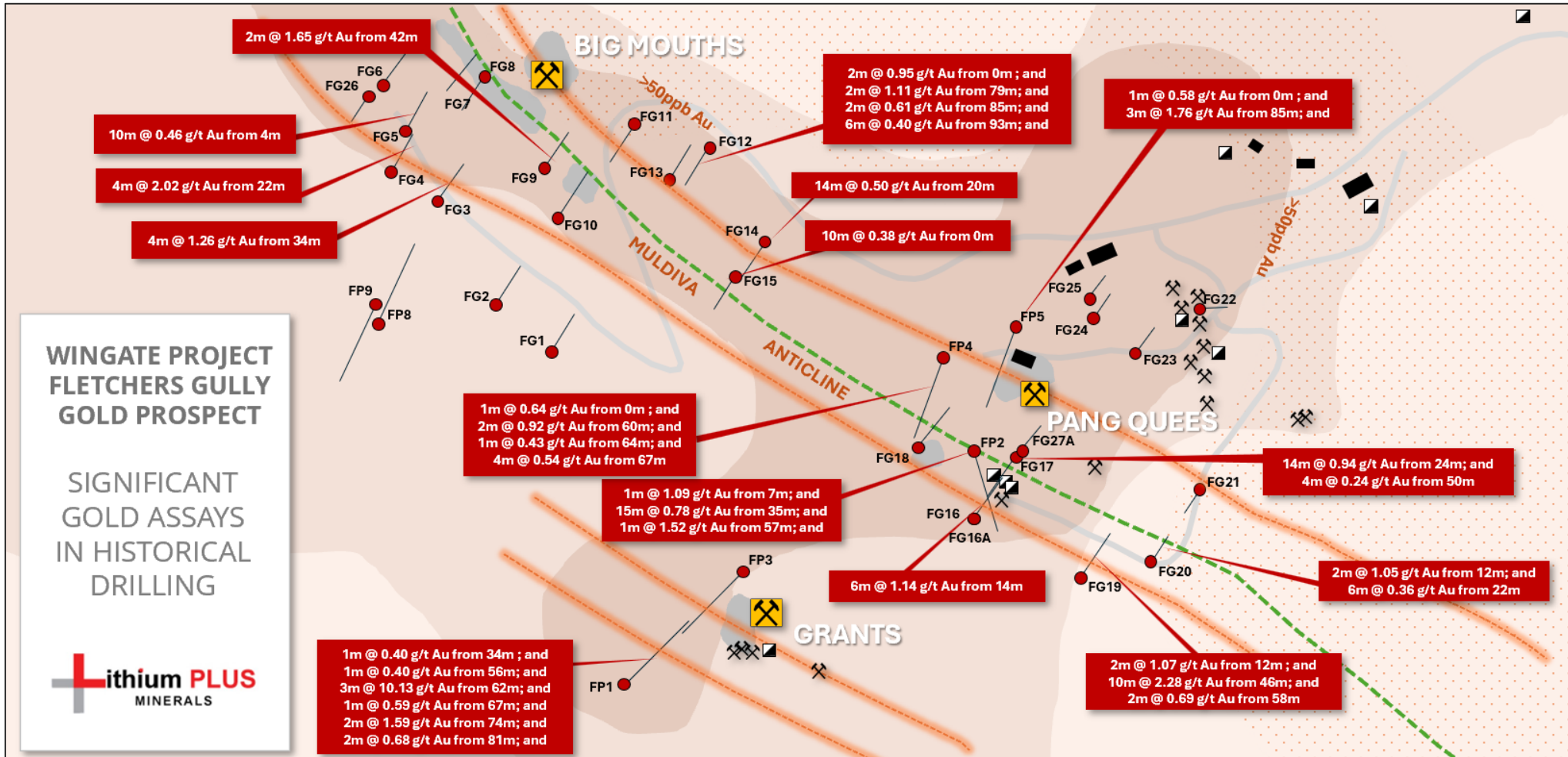
1. NTGS annual report CR19860102

2. LPM ASX Announcement 17 March 2025 - Large scale gold potential identified – Wingate Project



Wingate Gold Project - Flecher's Gully Goldfield

Significant gold returned in historical drilling



1. Refer NTGS annual report CR19860 102
 2. LPM ASX Announcement 17 March 2025 - Large scale gold potential identified – Wingate Project

Arunta Critical Minerals Project

NORTHERN TERRITORY

Arunta Critical Minerals Projects

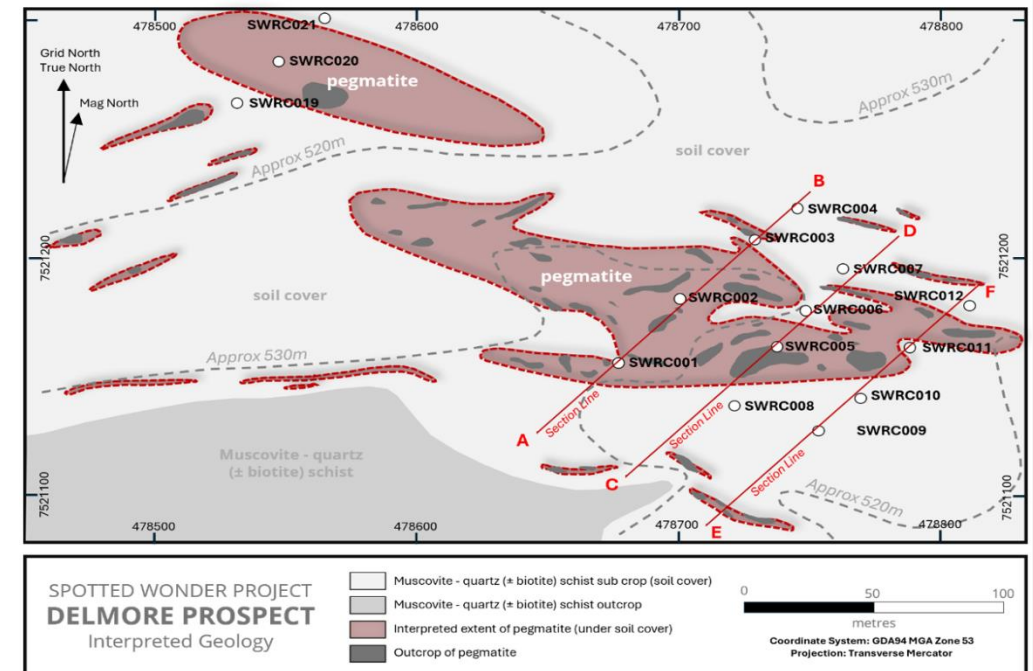
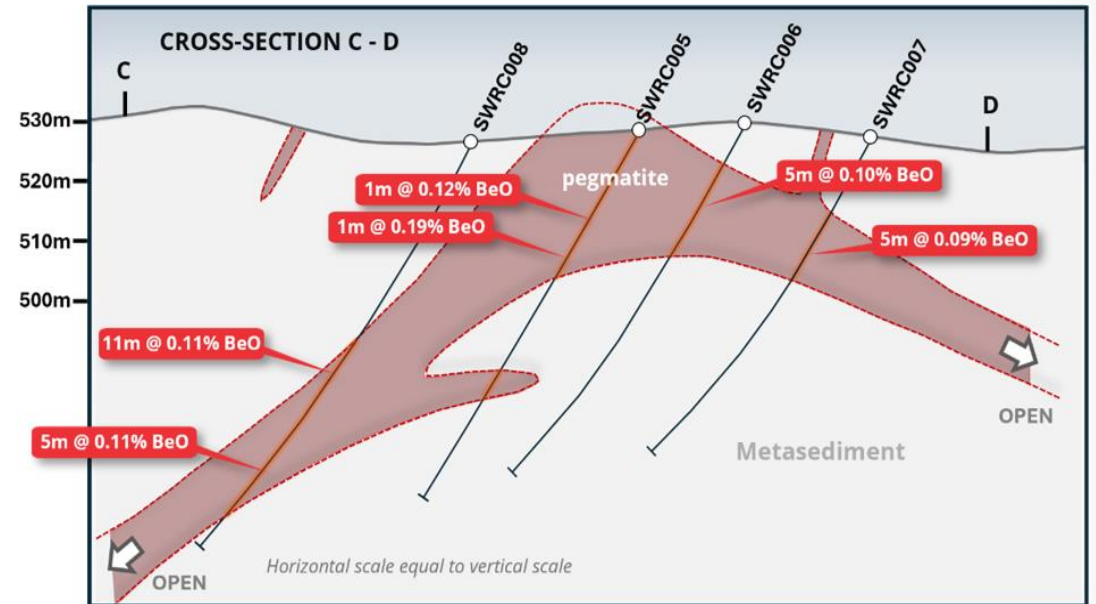
Rare, high-value minerals

Potentially high-value mineralisation identified in Spotted Wonder and Delmore pegmatites

- Reassessment of drill core identified high-grade Beryllium intersections
- Mineralisation commences at surface with significant shallow intersections, including:

Beryllium

- 7m @ 0.12% BeO from 24m (SWRC001)
- 12m @ 0.10% BeO from surface (SWRC002)
- 11m @ 0.11% BeO from 43m and 5m @ 0.11% BeO from 75m (SWRC008)
- 1m @ 0.28% BeO from 20m and 7m @ 0.09 % BeO from 26m (SWRC011)
- Beryllium is high-value and a designated critical mineral by several countries incl. USA, Japan & NZ



Activities Timeline

Advancing the Bynoe Project Stage 1 DSO lithium development in parallel with lithium, gold and critical minerals exploration

Activity	Q2 CY26	Q3 CY26	Q4 CY26
Consultancies engaged to complete Lei DSO Scoping Study	+		
Supplementary Enviro Report (SER) Submission	+		
Bynoe Field Activities (incl drilling)		+	
Arunta Field Activities		+	
Wingate field Activities		+	
Lei DSO Scoping Study results			+

Note: Target timeframes are subject to changes and may be impacted by wet season or other unforeseen circumstances



Contact



Dr Bin Guo

Executive Chairman

bguo@lithiumplus.com.au

Mr Simon Kidston

Non-Executive Director

skidston@lithiumplus.com.au

Registered Address

403, LVL4, 66 Hunter St

Sydney NSW 2000

+61 2 8029 0666

ASX:LPM
lithiumplus.com.au