

# ASX Announcement



04 June 2026

ABN: 45 116 153 514

ASX: TMX

FRA: T4Y

## Coherent Multi-Element Gold-Pathfinder Anomaly Identified at Carlindie Project, East Pilbara;

Anomaly Aligned with an Interpreted Greenstone Target from Machine-Learning; Field Reconnaissance Commencing July with Cover-Adapted UltraFine+ Soils to Follow

**Terrain Minerals Limited** (ASX: TMX) is pleased to provide an update on its 100% owned Carlindie Project, located approximately 90 kilometres southeast of Port Hedland, Western Australia (see Diagram 1).

### Key Points Highlighting Exciting Project Advancements:

- **Large coherent gold-pathfinder anomaly defined at Carlindie:** a first-pass conventional soil survey has returned a coherent, multi-element gold-pathfinder anomaly (As-Sb-Bi-W-Cs) extending approximately 4 by 3 kilometres (see diagram 2 & 3).
- **Two independent lines of evidence converge on the same target:** the soil anomaly is spatially coincident with an interpreted concealed greenstone belt independently defined by RSC's machine-learning-assisted bedrock mapping (see diagram 5).
- **High-intensity bismuth-tungsten point-source feature identified within the anomaly:** a single sample at 736831 mE / 7704428 mN returned coincident bismuth (9.91 ppm) and tungsten (6.74 ppm) an order of magnitude above background (10 times higher), on-trend with the arsenic-antimony cluster. This site is the primary follow-up target of the July field reconnaissance.
- **Staged follow-up program committed:** on-ground reconnaissance commences July 2026, targeting the bismuth-tungsten site and lithium areas where shallow cover is indicated. A cover-adapted CSIRO UltraFine+™ soil program follows from August 2026, designed to validate and sharpen the anomaly footprint and test the continuation of the target north and south within E45/6524. Results expected Q4 2026.

A first-pass conventional soil survey<sup>1</sup> at the Carlindie Project has defined a coherent, multi-element gold-pathfinder anomaly<sup>2</sup> (arsenic-antimony-bismuth-tungsten-caesium) extending approximately 4 by 3 kilometres in the south-eastern part of the surveyed area<sup>3,4</sup>, coincident with an interpreted

<sup>1</sup> Comprising 813 samples within survey specifications include 200 metre × 200 metre grid; <0.4 mm fraction

<sup>2</sup> The multi-element anomaly footprint (89 samples) is defined as areas As, Sb, Bi, W, Cs mostly exceeds the 90th percentile of the dataset (P90 thresholds: As = 4.7 ppm, Sb = 0.61 ppm, Bi = 0.18 ppm, W = 0.75 ppm, and Cs = 4.43 ppm.

<sup>3</sup> with 42% of samples within the anomaly coincidentally elevated in two or more pathfinder elements at P90 compared to negligible coincidence elsewhere on the grid

<sup>4</sup> Halley, S.W. (2020) "A new multi-element geochemical approach to finding buried gold deposits", in Proceedings of the 2020 NewGenGold Conference, Perth, Western Australia. The pathfinder association (Mo-Bi-Te-As-Sb-W-Cs) defined by Halley is recognised as the diagnostic multi-element signature for Archaean orogenic gold mineralisation.

concealed greenstone belt independently identified by RSC's machine-learning-assisted mapping using regional geophysical datasets (see diagrams 2 & 3). Significantly, the anomaly footprint<sup>5</sup> sits within an area that the machine-learning prospectivity study ranked as a priority area for both gold and lithium (see diagram 5).

The convergence of geochemical and geophysical evidence over the same target is the principal outcome of the soil survey and is the basis on which the Company is now stepping up its exploration at Carlindie.

On-ground reconnaissance commences next month, targeting both the lithium areas (where the radiometric data interpreted by RSC indicates no or shallow cover) and the high-intensity arsenic-antimony-bismuth-tungsten site within the gold-pathfinder anomaly.

A cover-adapted UltraFine+™ soil program follows from August 2026, designed to sharpen the defined anomaly footprint and extend coverage both north and south of the defined anomaly footprint. UltraFine+ soil results are expected in Q4 2026.

Further UltraFine+ coverage across the balance of the magenta target area within E45/6524 and E45/6951, including the second machine-learning target to the north (see diagram 5) is planned for 2027. Work over E45/6525 will be deferred until that tenement is granted.

The priority target hosting the defined anomaly footprint within tenement E45/6524 lies along the interpreted extension of the tectonic structure<sup>6</sup> that hosts Wildcat Resources' (ASX: WC8) Tabba Tabba lithium deposit.

Full assays from the first-pass conventional soil survey are reported in Table 2 with the anomaly statistics and the high-intensity bismuth-tungsten point returned from this survey described in detail under First-Pass Soil Result — Gold-Pathfinder Anomaly below.

**Commenting on the results, Mr Justin Virgin, Executive Director of Terrain Minerals stated:**

- *"The Carlindie Project represents one of the exciting side projects that Terrain is quietly advancing alongside its Flagship Smokebush Gold/Silver project where we are still on track for a maiden MRE in July 2026."*
- *"We believe this project represents one of the most exciting opportunities in Terrain's portfolio. The Company has secured a large, contiguous land position in the East Pilbara, covering a highly underexplored area that sits beneath shallow soil cover and has seen little to no historical drilling."*

*For decades, much of this ground remained effectively overlooked due to the region's remoteness and its tenure history under major companies. As exploration activity across the East Pilbara has increased over the past 30 years, the region has delivered a series of significant mineral discoveries, highlighting its outstanding prospectivity.*

*Terrain has assembled a strategic landholding in this emerging exploration frontier, and we believe it has the potential to host large-scale mineral systems. The new target we are now advancing further reinforces our confidence in the opportunity and our excitement about what systematic exploration may uncover."*

---

<sup>5</sup> The anomaly was returned using a conventional sieved soil method in an area interpreted to be under partial transported cover; UltraFine+™ sampling may provide additional resolution in this covered area.

<sup>6</sup> Interpretation based on internal work completed by Terrain Minerals. This interpretation should be viewed as preliminary and is provided for geological context only; investors should not rely on it.

- 
- *"This represents a highly encouraging first-pass result at Carlindie. The soil survey has independently identified a large and coherent gold-pathfinder anomaly directly over the interpreted concealed greenstone target highlighted by RSC's machine-learning study, providing an important convergence of independent datasets.*

*Importantly, the anomaly was defined using a conventional sieved soil sampling method despite the presence of transported cover, an environment in which this technique is generally considered less effective. The strength and coherence of the response therefore provides additional confidence in the target's prospectivity."*

- 
- *"The forward exploration program is now locked in. Our team will be on the ground in July to assess both the lithium target areas and the high-intensity arsenic-antimony-bismuth-tungsten anomaly located within the broader multi-element gold-pathfinder system.*

*Within the target anomaly, 42% of assay results rank in the highest decile (top10%) of the dataset across six key pathfinder elements (As, Sb, Bi, W and Cs), with at least two of these elements elevated in each sample over a strike extent of several kilometres. These results provide strong support for advancing to the next stage of exploration.*

*From August, the Company will commence its cover-adapted UltraFine+ soil sampling program to further define and validate the anomaly footprint and to test its potential continuation both north and south within the tenement package. Results from this program are expected during the fourth quarter.*

*With two independent datasets now highlighting the same target area, the Company has established a clear and disciplined exploration pathway and remains focused on rapidly advancing and refining this priority target."*

---

## **Project Background**

The Carlindie Project is located approximately 90 kilometres southeast of Port Hedland, Western Australia. The project occupies a strategic position between Wildcat Resources (ASX: WC8) and SQM-Kali Metals (ASX: KM1) ground in the emerging Pilbara lithium and gold province.

## **Regional Context**

The Carlindie Project is positioned southeast of the Tabba Tabba lithium deposit where Wildcat Resources has reported a Mineral Resource of 74.1 million tonnes at 1.0% lithium oxide (Li<sub>2</sub>O) at Tabba Tabba, comprising Indicated Mineral Resources of 70.0 million tonnes at 1.10% Li<sub>2</sub>O and Inferred Mineral Resources of 4.1 million tonnes at 0.76% Li<sub>2</sub>O<sup>7</sup>.

In August 2025, Wildcat Resources reported the Bolt Cutter Central lithium discovery<sup>8</sup> with reported intersections including 20 metres at 1.7% Li<sub>2</sub>O from 43 metres downhole, 13 metres at 1.4% Li<sub>2</sub>O from 39 metres downhole and 13 metres at 1.3% Li<sub>2</sub>O from 40 metres downhole. The discovery of lithium mineralisation at Bolt Cutter Central, positioned along the interpreted extension of a tectonic

---

<sup>7</sup> Previously reported by Wildcat Resources via the ASX Market Announcements Platform on 28 November 2024.

<sup>8</sup> Previously reported by Wildcat Resources via the ASX Market Announcements Platform on 4 August 2025.

structure that hosts the Tabba Tabba lithium deposit and Terrain's Carlindie Project to the southeast<sup>9</sup> supports the Company's conceptual model that Terrain's tenement package is potentially prospective for lithium mineralisation.

### **Exploration Methodology Context**

The East Pilbara and adjoining Mallina Basin have produced two of Australia's most significant recent discoveries under shallow cover being Wildcat Resources' Tabba Tabba lithium deposit (74.1 Mt at 1.0% Li<sub>2</sub>O) on the same interpreted tectonic structure that extends into Terrain's Carlindie tenure and Northern Star's 11.2-million-ounce Hemi gold discovery<sup>10</sup>.

Although the host terranes and deposit styles differ, both discoveries were made through a consistent exploration methodology being regional structural interpretation defining a prospective corridor under cover, multi-element pathfinder soil geochemistry, supporting geophysical and bedrock interpretation work, and staged air core and reverse circulation follow-up.

Terrain's Carlindie exploration program is designed around the same methodology.

- ✓ A first-pass soil survey (announced 1 October 2025, results below) tested an interpreted regional structure under shallow cover,
- ✓ The machine-learning prospectivity study, commissioned in parallel integrated regional gravity, magnetic and radiometric datasets, applying principal component analysis and unsupervised clustering to produce an interpreted bedrock map under cover, and
- ✓ A cover-adapted UltraFine+™ soil program, from August 2026, will sharpen the defined anomaly footprint and extend coverage both north and south of the defined anomaly footprint, with results expected in Q4 2026 (see diagram 2 & 3).

The machine-learning study identified priority areas across the project, including ground covered by granted tenement E45/6524, for both gold and lithium prospectivity. The priority areas are anchored by an arcuate high gravity feature that the study interpreted as a concealed greenstone belt. First-pass soil results from tenement E45/6524 are reported below.

### **First-Pass Soil Result – Lithium and Caesium**

The first-pass conventional soil survey returned low-order lithium across the grid (mean approximately 16 ppm; see Table 1), with the highest values (up to 37.2 ppm) scattered rather than spatially coherent.

Caesium values were low-order across the grid as a whole (mean approximately 2.9 ppm) but coherently elevated within the south-eastern gold-pathfinder anomaly footprint, where caesium averaged approximately 3.7 ppm and reached 5.2 ppm. The caesium response within that footprint forms part of the multi-element pathfinder signature discussed in the following section.

Conventional soil geochemistry using coarse fractions is generally less diagnostic for LCT-pegmatite mineralisation under transported cover, where geochemical dispersion may be diluted by barren material or decoupled from underlying bedrock. Consequently, the lithium prospectivity of the project will be tested first-pass by on-ground prospecting and rock chip sampling in the lithium target areas where the RSC radiometric interpretation indicates no or shallow cover.

---

<sup>9</sup> Interpretation based on internal work completed by Terrain Minerals. This interpretation should be viewed as preliminary and is provided for geological context only; investors should not rely on it.

<sup>10</sup> Northern Star Resources Limited, Hemi Development Project. Available at: <https://www.nsr ltd.com/our-assets/hemi-development-project/> (accessed May 2026).

Localised low K/Rb ratios can be associated with LCT-pegmatite fertility in primary granite settings, although the applicability of such ratios to soil samples over transported cover is uncertain. Lithium prospectivity at Carlindie will be advanced most directly by on-ground prospecting and rock chip sampling, which is the more diagnostic tool for a fertile pegmatite source and the focus of the July field reconnaissance. The target itself is the interpreted concealed greenstone belt that machine-learning bedrock mapping independently ranked among the priority areas for both lithium and gold prospectivity, not the surface geochemistry.

### **First-Pass Soil Result – Gold-Pathfinder Anomaly**

The recognised pathfinder association for Archaean orogenic gold mineralisation is molybdenum-bismuth-tellurium-arsenic-antimony-tungsten-caesium (Halley, 2020). The first-pass soil survey defined a coherent, large-area multi-element response in this association across the south-eastern part of the surveyed area, extending across approximately 4 by 3 kilometres (see diagrams 2 & 3; full data in Table 2).

Gold assays from this survey are currently pending, thus, the anomaly is defined based on the coherent spatial association of recognised pathfinder elements for orogenic gold systems. Within the defined anomaly footprint, 42% of samples are coincidentally elevated in two or more of the recognised pathfinder elements at the 90th percentile against effectively no coincidence elsewhere on the grid. Mean values within the anomaly run 1.5 to 2 times the rest of the grid: arsenic approximately 4.3 ppm (vs 2.5 ppm), antimony 0.59 ppm (vs 0.29 ppm), caesium 3.7 ppm (vs 2.5 ppm), bismuth 0.19 ppm (vs 0.12 ppm) and tungsten 0.69 ppm (vs 0.50 ppm). The maximum arsenic value of 12.9 ppm at 738401 mE / 7704597 mN forms part of a broader cluster of arsenic results in the 8 to 9 ppm range within the same area.

Within the broader anomaly footprint, a single sample at 736831 mE / 7704428 mN returned coincident bismuth (9.91 ppm) and tungsten (6.74 ppm) values an order of magnitude above the rest of the surveyed area. The point sits on-trend with the arsenic-antimony cluster and is interpreted as a candidate point-source feature within the broader pathfinder halo.

The Company notes that the first-pass survey was a conventional sieved soil method (<0.4 mm fraction), recognised to underperform over transported cover because target and pathfinder elements concentrate in the fine fraction (<2 µm fraction) that conventional sieving discards. The cover-adapted UltraFine+™ program planned for August 2026 is designed to sharpen this response, and the July field reconnaissance will inspect the high-intensity site on the ground.

### **Planned UltraFine+ Soil Program**

Following the July field reconnaissance, the Company will roll out a staged, cover-adapted UltraFine+™ soil program from August 2026 to validate and sharpen the defined gold-pathfinder anomaly and extend coverage both north and south of the defined anomaly footprint. Results are expected in Q4 2026. The program is designed to be staged from broader validation to tighter infill, with each subsequent stage informed by the preceding results:

**Table 1:** Forward exploration program over the Carlindie Project in 2026

| Sampling zone   | Approx. area         | Grid spacing | Purpose   |
|---|----------------------|--------------|---|
| South-eastern anomaly footprint (validation)          | 10 km <sup>2</sup>   | 200 × 200 m  | Apply the cover-adapted UltraFine+™ method at the same spacing as the first-pass survey to validate the multi-element anomaly using a more sensitive analytical fraction. |
| South-eastern anomaly core (infill)                   | 4 km <sup>2</sup>    | 100 × 100 m  | Sharpen the higher-intensity portion of the anomaly footprint to support drill targeting.   |
| Bismuth-tungsten high-intensity point (detailed grid) | 0.25 km <sup>2</sup> | 50 × 50 m    | Resolve the candidate point-source feature at 736831 mE / 7704428 mN identified by the first-pass coincident bismuth and tungsten high.                                   |
| Northern and southern continuation within E45/6524    | ~10 km <sup>2</sup>  | 200 × 200 m  | Extend reconnaissance coverage north and south of the current surveyed area, with tighter follow-up subject to the result   |

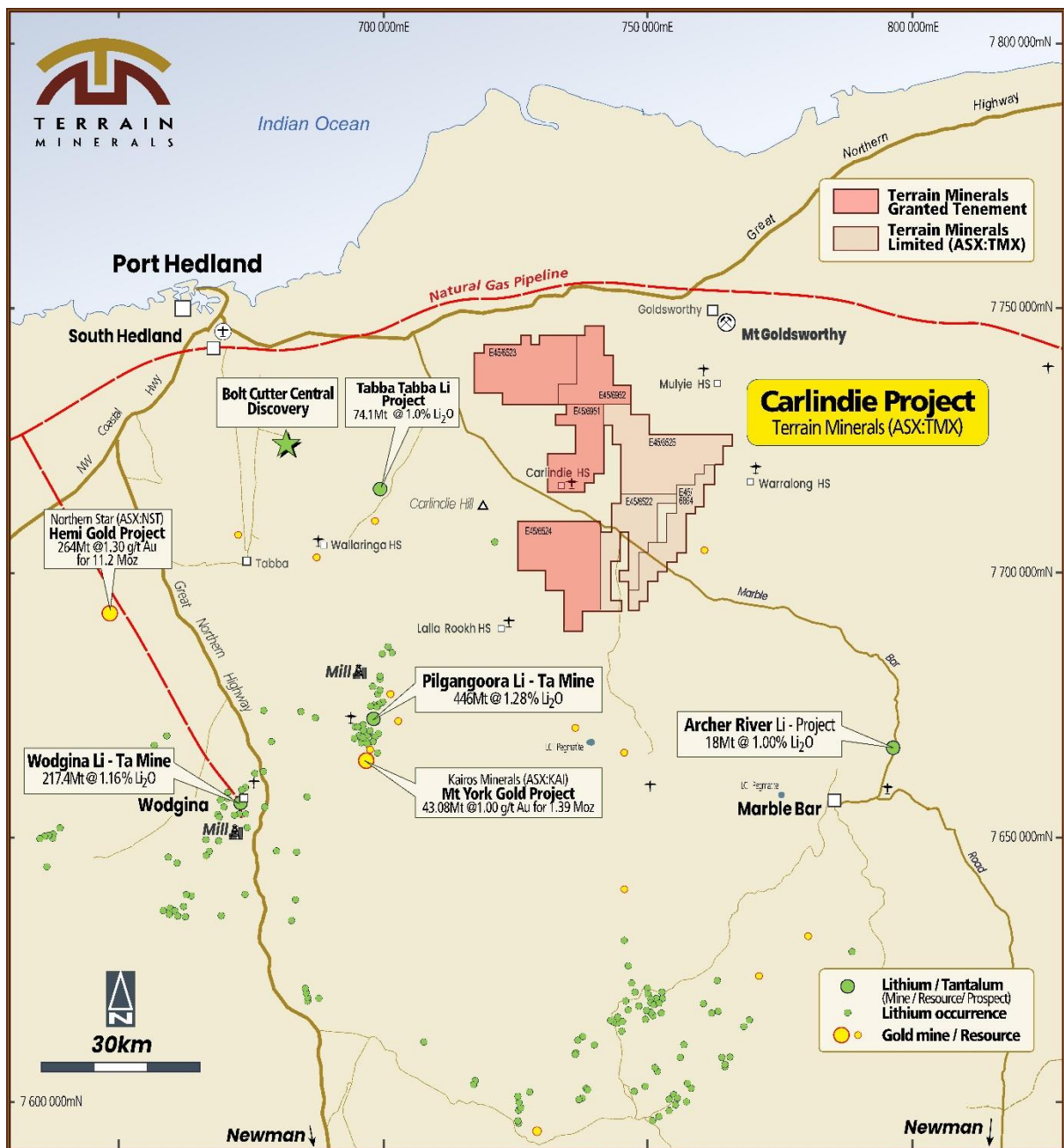
### Forward Program

With a coherent multi-element gold-pathfinder anomaly defined in the soils and convergent with the RSC machine-learning bedrock interpretation, the Company will progress the following activities:

- **Field reconnaissance:** on-ground reconnaissance commencing July 2026, comprising prospecting and rock chip sampling at the high-intensity bismuth-tungsten site at 736831 mE / 7704428 mN within the gold-pathfinder anomaly, and over the lithium target areas where the RSC radiometric interpretation indicates no or shallow cover.
- **UltraFine+ soil program:** a staged, cover-adapted UltraFine+™ soil program from August 2026
  - Starting at 200 by 200 metre spacing across the south-eastern anomaly footprint to validate the multi-element response,
  - Followed by 100 by 100 metre infill over the anomaly core and
  - Then a 50 by 50 metre detailed grid over the bismuth-tungsten high-intensity point.

The program also extends 200 by 200 metre reconnaissance coverage north and south of the priority footprint within E45/6524. Results expected in Q4 2026. Further coverage across the balance of the target area within E45/6524 and E45/6951 is planned for 2027. Work over E45/6525 will be deferred until that tenement is granted.

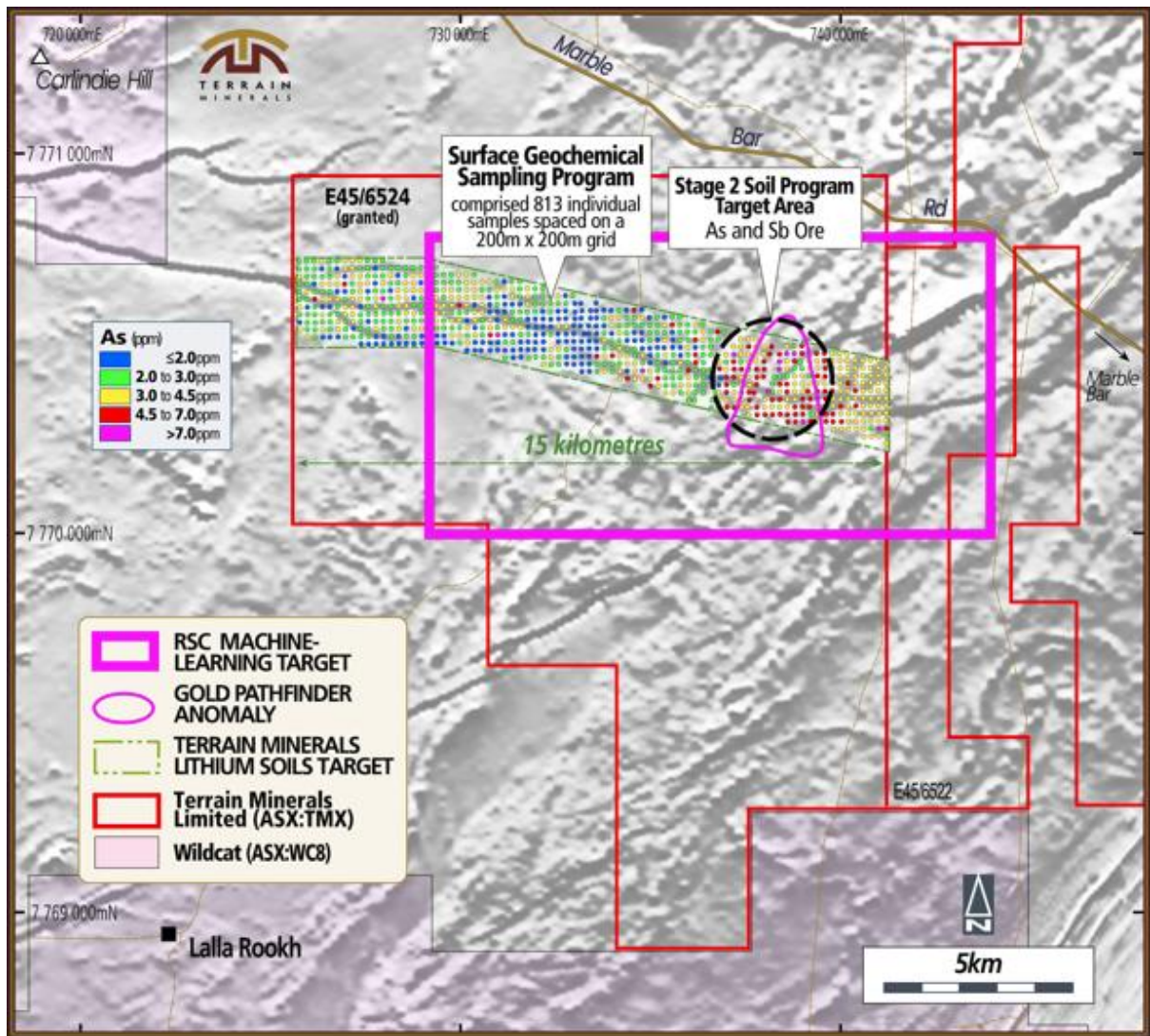
- **Drill-testing decision:** the Company will assess the cover-adapted geochemistry and field reconnaissance results to define targets and determine the timing and scope of a future drilling program. A pre-approved pathway is already in place, with Departmental approval to drill up to 100 holes at Carlindie, subject to completion of the corresponding Heritage Survey.



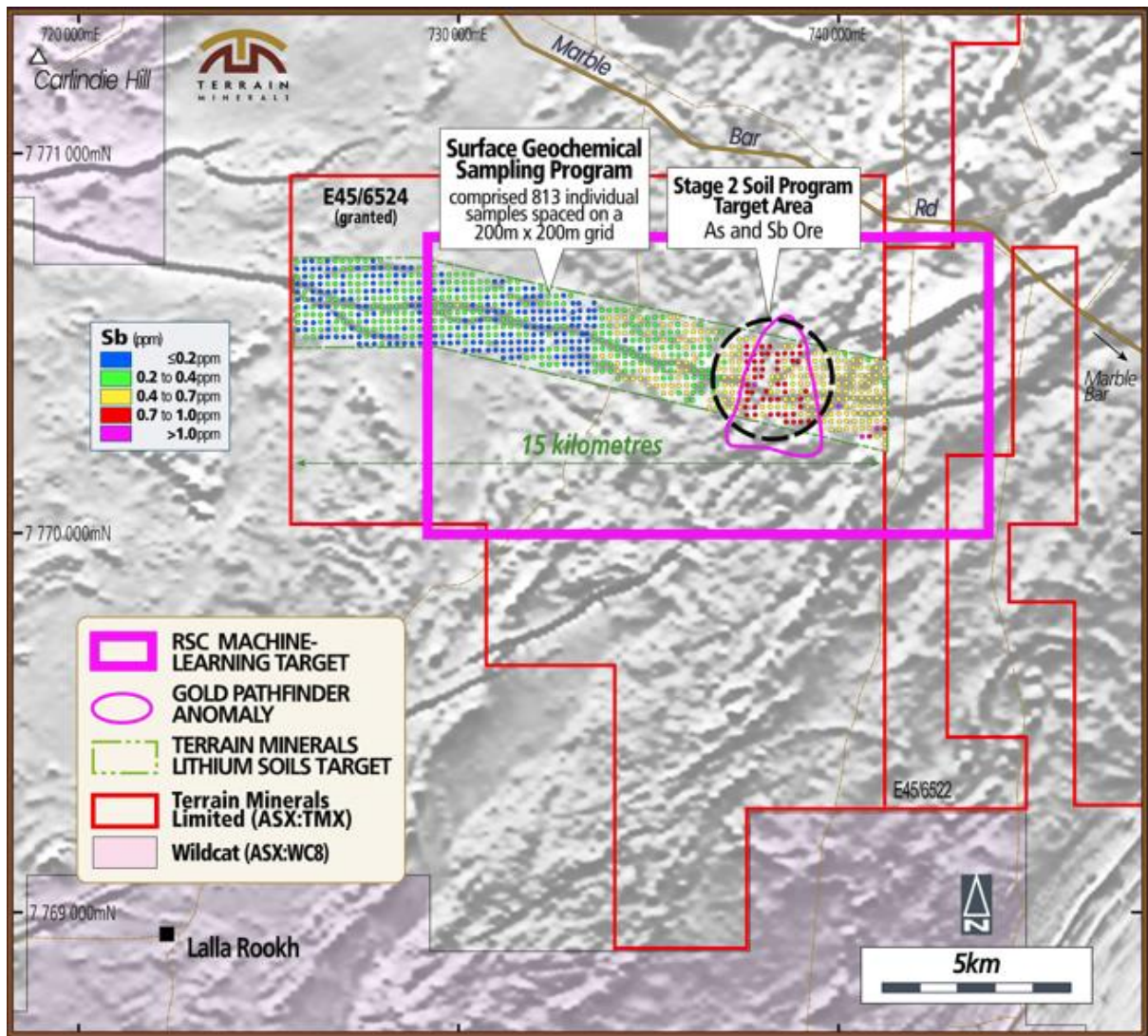
**Diagram 1.** Location of the Carlindie Project within the East Pilbara, approximately 90 kilometres southeast of Port Hedland, Western Australia. The Project is strategically positioned between Wildcat Resources' (ASX: WC8) Tabba Tabba lithium deposit and SQM-Kali Metals' (ASX: KM1) Pilbara lithium ground in a province that also hosts Pilbara Minerals' Pilgangoora operation and Mineral Resources' Wodgina lithium mine.

**Address:** Suite 2, 28 Outram Street, West Perth WA 6005 **Postal:** PO Box 79, West Perth, WA 6872

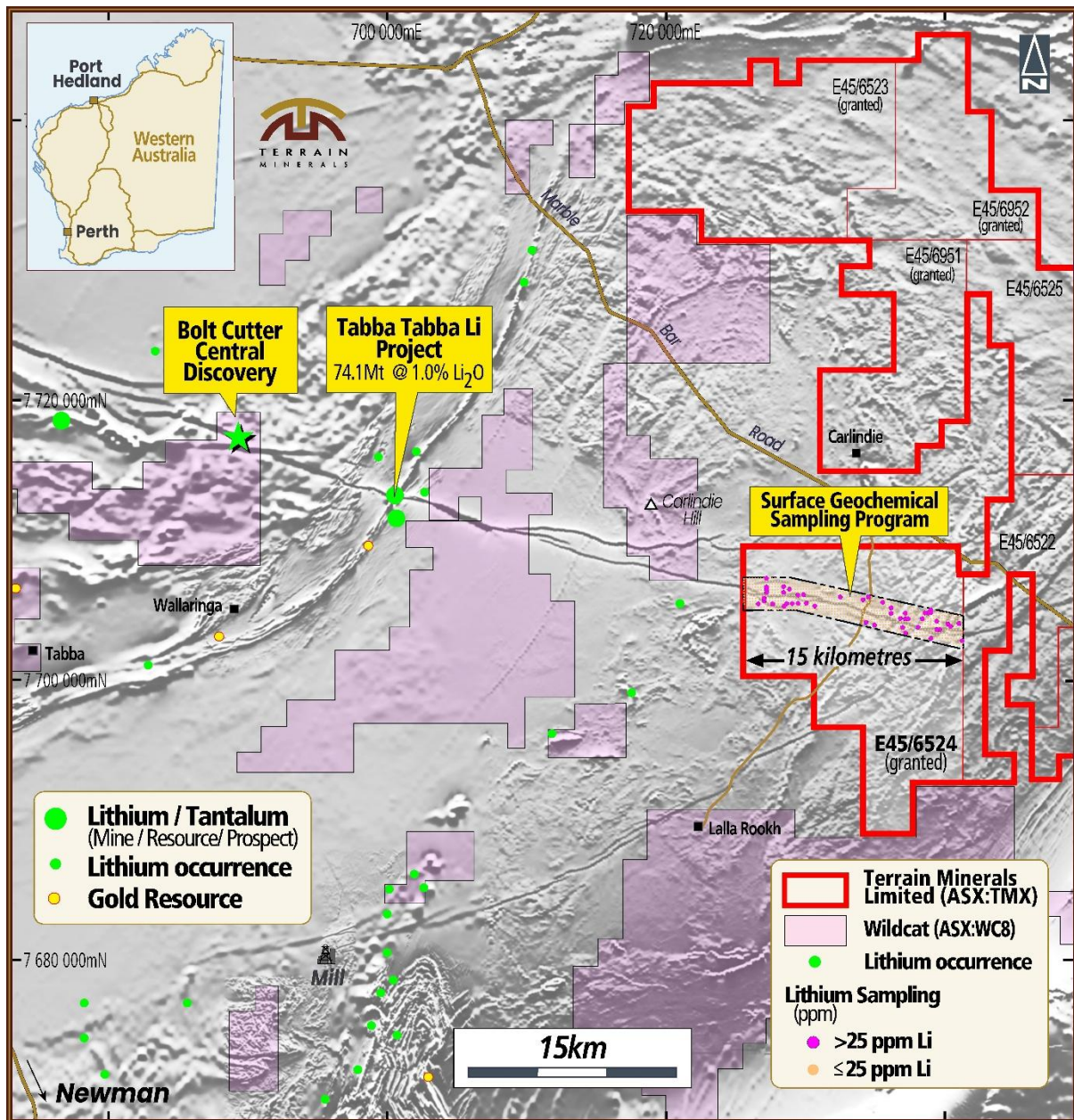
**T:** +61 8 9381 5558 **E:** [terrain@terrainminerals.com.au](mailto:terrain@terrainminerals.com.au) **W:** [www.terrainminerals.com.au](http://www.terrainminerals.com.au)



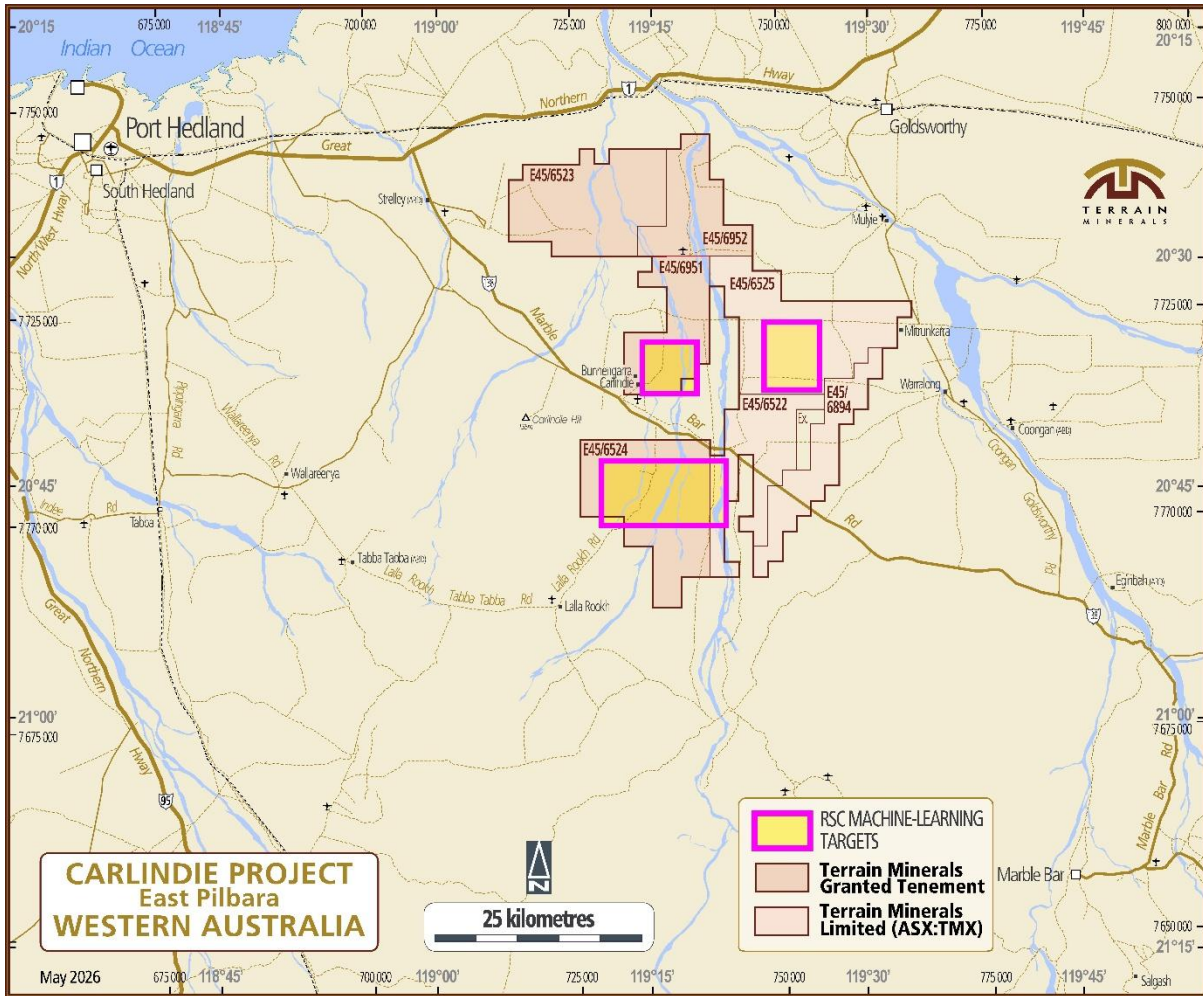
**Diagram 2.** Plan of arsenic (As) in soils across the surveyed grid at Carlindie, showing the coherent multi-kilometre arsenic response defining the south-eastern part of the gold-pathfinder anomaly footprint.



**Diagram 3.** Plan of antimony (Sb) in soils across the surveyed grid at Carlindie, showing the coherent multi-kilometre antimony response coincident with the arsenic anomaly in the south-eastern part of the surveyed area, and consistent with an Archaean orogenic gold pathfinder signature.



**Diagram 4.** Processing of the open-file Western Australian Government aeromagnetic data highlighted that the tectonic structure associated with Wildcat Resources' Tabba Tabba lithium deposit extends into Terrain Minerals' Carlindie Project. This results in Terrain Minerals identifying more than 15 kilometres of prospective geology within its 100% owned tenement E45/6524. The prospectivity of this tectonic structure was strengthened following Wildcat Resources' ASX announcement dated 4 August 2025, where they reported multiple lithium-bearing pegmatite swarms at Bolt Cutter Central, the interpreted western extension of the same tectonic structure that extends into Terrain Minerals' Carlindie Project.



**Diagram 5.** RSC machine-learning-assisted prospectivity output over the Carlindie Project, showing the priority lithium and gold target footprints that the cover-adapted soil program and field reconnaissance will test.

**Table 2.** Assay results for selected lithium and gold pathfinder elements from Terrain Minerals’ first-pass conventional soil survey at the Carlindie Project. Coordinates are reported in GDA94 Zone 50.

| Easting | Northing | Lithium (ppm) | Caesium (ppm) | K/Rb ratio | Arsenic (ppm) | Antimony (ppm) | Bismuth (ppm) | Tungsten (ppm) |
|---------|----------|---------------|---------------|------------|---------------|----------------|---------------|----------------|
| 725804  | 7707398  | 13.90         | 2.61          | 224        | 2.50          | 0.26           | 0.14          | 0.65           |
| 726002  | 7707397  | 16.30         | 2.70          | 224        | 2.80          | 0.24           | 0.14          | 0.51           |
| 726199  | 7707404  | 17.70         | 2.49          | 230        | 2.50          | 0.24           | 0.14          | 0.55           |
| 726404  | 7707404  | 17.50         | 3.10          | 216        | 3.10          | 0.27           | 0.14          | 0.59           |
| 726601  | 7707401  | 11.10         | 3.28          | 231        | 2.30          | 0.22           | 0.11          | 0.41           |
| 726803  | 7707400  | 14.00         | 2.90          | 228        | 2.90          | 0.27           | 0.15          | 0.51           |
| 727000  | 7707402  | 18.90         | 3.08          | 213        | 3.60          | 0.32           | 0.17          | 0.77           |

**Address:** Suite 2, 28 Outram Street, West Perth WA 6005 **Postal:** PO Box 79, West Perth, WA 6872

**T:** +61 8 9381 5558 **E:** [terrain@terrainminerals.com.au](mailto:terrain@terrainminerals.com.au) **W:** [www.terrainminerals.com.au](http://www.terrainminerals.com.au)

|        |         |       |      |     |      |      |      |      |
|--------|---------|-------|------|-----|------|------|------|------|
| 727201 | 7707401 | 19.20 | 3.42 | 209 | 3.60 | 0.29 | 0.18 | 1.17 |
| 727399 | 7707401 | 26.00 | 4.23 | 197 | 4.30 | 0.33 | 0.31 | 2.38 |
| 727601 | 7707402 | 21.60 | 2.90 | 219 | 2.70 | 0.26 | 0.15 | 0.56 |
| 727799 | 7707397 | 13.70 | 2.89 | 235 | 2.50 | 0.24 | 0.13 | 0.49 |
| 728001 | 7707400 | 11.80 | 2.45 | 247 | 2.20 | 0.27 | 0.12 | 0.63 |
| 725797 | 7707201 | 14.70 | 2.67 | 223 | 2.30 | 0.23 | 0.15 | 0.64 |
| 726004 | 7707208 | 11.90 | 2.68 | 229 | 2.10 | 0.23 | 0.14 | 0.45 |
| 726205 | 7707200 | 13.70 | 2.87 | 229 | 2.20 | 0.25 | 0.22 | 0.46 |
| 726399 | 7707202 | 9.70  | 2.41 | 244 | 1.80 | 0.19 | 0.10 | 0.40 |
| 726604 | 7707199 | 13.40 | 2.74 | 228 | 2.50 | 0.24 | 0.15 | 0.52 |
| 726798 | 7707199 | 5.80  | 1.57 | 271 | 1.00 | 0.16 | 0.05 | 0.23 |
| 727006 | 7707200 | 18.20 | 2.51 | 230 | 3.40 | 0.31 | 0.12 | 0.48 |
| 727200 | 7707193 | 16.90 | 3.10 | 227 | 3.20 | 0.30 | 0.16 | 0.56 |
| 727395 | 7707207 | 14.20 | 2.67 | 231 | 2.50 | 0.24 | 0.13 | 0.49 |
| 727605 | 7707194 | 19.80 | 2.71 | 228 | 2.90 | 0.28 | 0.14 | 0.48 |
| 727805 | 7707205 | 13.20 | 2.51 | 252 | 1.90 | 0.22 | 0.10 | 0.51 |
| 727999 | 7707200 | 14.40 | 2.58 | 241 | 2.30 | 0.23 | 0.13 | 0.51 |
| 728204 | 7707200 | 14.40 | 2.65 | 236 | 2.70 | 0.29 | 0.17 | 0.60 |
| 728400 | 7707201 | 11.70 | 2.41 | 242 | 2.20 | 0.24 | 0.11 | 0.49 |
| 728603 | 7707201 | 12.80 | 2.49 | 236 | 2.40 | 0.21 | 0.13 | 0.46 |
| 728802 | 7707198 | 13.30 | 2.35 | 232 | 2.30 | 0.23 | 0.10 | 0.42 |
| 729002 | 7707199 | 16.20 | 2.57 | 226 | 2.90 | 0.25 | 0.14 | 0.48 |
| 729201 | 7707195 | 7.30  | 1.96 | 268 | 1.30 | 0.18 | 0.07 | 0.37 |
| 729400 | 7707202 | 13.10 | 2.47 | 240 | 2.30 | 0.26 | 0.10 | 0.56 |
| 725796 | 7707001 | 21.90 | 3.26 | 204 | 3.50 | 0.30 | 0.19 | 0.60 |
| 726005 | 7706996 | 15.80 | 2.63 | 219 | 2.60 | 0.25 | 0.15 | 0.50 |
| 726200 | 7707001 | 16.50 | 3.84 | 214 | 2.60 | 0.27 | 0.29 | 0.57 |
| 726402 | 7706998 | 11.90 | 2.57 | 229 | 2.20 | 0.23 | 0.11 | 0.41 |
| 726600 | 7707000 | 12.80 | 2.62 | 238 | 2.40 | 0.24 | 0.12 | 0.45 |
| 726800 | 7707000 | 20.00 | 3.30 | 213 | 3.70 | 0.29 | 0.18 | 0.61 |
| 726997 | 7707000 | 9.50  | 2.37 | 244 | 1.80 | 0.21 | 0.16 | 0.49 |
| 727197 | 7706998 | 15.20 | 2.81 | 224 | 3.10 | 0.28 | 0.14 | 0.59 |
| 727401 | 7707001 | 20.40 | 3.27 | 212 | 3.30 | 0.26 | 0.16 | 0.61 |
| 727606 | 7707002 | 14.10 | 2.64 | 236 | 2.40 | 0.24 | 0.13 | 0.50 |
| 727796 | 7706999 | 12.30 | 2.43 | 237 | 2.20 | 0.25 | 0.16 | 0.47 |
| 727999 | 7706997 | 13.40 | 2.61 | 243 | 2.40 | 0.23 | 0.18 | 0.95 |
| 728201 | 7707003 | 19.60 | 3.08 | 219 | 3.40 | 0.30 | 0.15 | 0.75 |
| 728398 | 7707000 | 8.20  | 2.11 | 263 | 1.50 | 0.22 | 0.08 | 0.31 |
| 728603 | 7707000 | 14.80 | 2.65 | 227 | 2.40 | 0.21 | 0.13 | 0.50 |
| 728801 | 7706998 | 18.00 | 2.92 | 213 | 3.10 | 0.28 | 0.15 | 0.62 |
| 729002 | 7706999 | 18.30 | 2.97 | 212 | 3.10 | 0.30 | 0.14 | 0.59 |

**Address:** Suite 2, 28 Outram Street, West Perth WA 6005 **Postal:** PO Box 79, West Perth, WA 6872

**T:** +61 8 9381 5558 **E:** [terrain@terrainminerals.com.au](mailto:terrain@terrainminerals.com.au) **W:** [www.terrainminerals.com.au](http://www.terrainminerals.com.au)

|        |         |       |      |     |      |      |      |      |
|--------|---------|-------|------|-----|------|------|------|------|
| 729200 | 7707002 | 9.60  | 2.14 | 244 | 1.70 | 0.20 | 0.09 | 0.43 |
| 729398 | 7706998 | 12.10 | 2.42 | 246 | 2.10 | 0.26 | 0.11 | 0.49 |
| 729600 | 7707001 | 11.40 | 2.65 | 250 | 2.10 | 0.22 | 0.12 | 0.51 |
| 729801 | 7707003 | 14.40 | 2.48 | 240 | 2.50 | 0.27 | 0.13 | 0.61 |
| 729999 | 7707001 | 17.90 | 3.03 | 227 | 3.30 | 0.31 | 0.16 | 0.60 |
| 730201 | 7707001 | 17.00 | 2.73 | 234 | 3.20 | 0.31 | 0.13 | 0.48 |
| 730400 | 7707001 | 13.40 | 2.68 | 250 | 2.60 | 0.27 | 0.13 | 0.65 |
| 725802 | 7706801 | 15.60 | 3.13 | 208 | 2.70 | 0.23 | 0.17 | 0.52 |
| 726004 | 7706799 | 18.80 | 3.19 | 203 | 2.80 | 0.23 | 0.16 | 0.50 |
| 726200 | 7706799 | 10.50 | 2.54 | 235 | 1.90 | 0.19 | 0.13 | 0.37 |
| 726396 | 7706797 | 11.70 | 2.51 | 238 | 3.40 | 0.20 | 0.12 | 0.45 |
| 726598 | 7706798 | 16.50 | 3.13 | 221 | 3.30 | 0.33 | 0.15 | 0.57 |
| 726797 | 7706801 | 18.00 | 3.12 | 219 | 3.40 | 0.30 | 0.20 | 0.63 |
| 726997 | 7706798 | 13.10 | 2.53 | 233 | 6.40 | 0.24 | 0.13 | 0.48 |
| 727197 | 7706800 | 15.80 | 2.84 | 225 | 2.70 | 0.26 | 0.13 | 0.51 |
| 727397 | 7706799 | 27.50 | 3.91 | 195 | 4.20 | 0.33 | 0.19 | 0.68 |
| 727602 | 7706804 | 18.20 | 2.87 | 228 | 3.10 | 0.27 | 0.18 | 0.83 |
| 727797 | 7706797 | 14.20 | 2.48 | 243 | 2.00 | 0.21 | 0.13 | 0.45 |
| 728000 | 7706799 | 24.90 | 3.38 | 207 | 3.60 | 0.31 | 0.22 | 0.82 |
| 728202 | 7706800 | 17.20 | 2.73 | 227 | 2.90 | 0.26 | 0.14 | 0.42 |
| 728401 | 7706802 | 13.70 | 2.52 | 230 | 2.60 | 0.25 | 0.13 | 0.55 |
| 728599 | 7706802 | 25.60 | 3.16 | 188 | 3.90 | 0.28 | 0.15 | 0.72 |
| 728799 | 7706798 | 20.10 | 3.17 | 203 | 3.40 | 0.28 | 0.16 | 0.67 |
| 729001 | 7706797 | 8.00  | 2.08 | 254 | 1.50 | 0.20 | 0.08 | 0.36 |
| 729201 | 7706798 | 12.50 | 2.29 | 237 | 2.10 | 0.23 | 0.09 | 0.36 |
| 729401 | 7706799 | 17.70 | 2.89 | 220 | 3.00 | 0.26 | 0.13 | 0.77 |
| 729600 | 7706799 | 15.20 | 2.71 | 231 | 2.60 | 0.25 | 0.12 | 0.62 |
| 729799 | 7706800 | 13.80 | 2.56 | 230 | 2.50 | 0.26 | 0.11 | 0.61 |
| 730003 | 7706800 | 14.60 | 2.84 | 238 | 2.90 | 0.29 | 0.12 | 0.53 |
| 730201 | 7706799 | 19.30 | 3.03 | 214 | 3.70 | 0.33 | 0.15 | 0.69 |
| 730401 | 7706794 | 16.40 | 2.84 | 228 | 3.50 | 0.32 | 0.15 | 0.72 |
| 730603 | 7706804 | 15.50 | 2.61 | 237 | 3.20 | 0.30 | 0.12 | 0.59 |
| 730797 | 7706798 | 21.60 | 3.20 | 209 | 3.90 | 0.37 | 0.17 | 0.86 |
| 731000 | 7706797 | 16.40 | 2.09 | 236 | 2.50 | 0.25 | 0.09 | 0.42 |
| 731202 | 7706804 | 8.80  | 2.07 | 247 | 1.50 | 0.22 | 0.07 | 0.40 |
| 731398 | 7706797 | 14.50 | 2.39 | 239 | 2.70 | 0.28 | 0.11 | 0.48 |
| 731601 | 7706801 | 13.30 | 2.45 | 236 | 2.50 | 0.31 | 0.11 | 0.47 |
| 725798 | 7706597 | 11.30 | 2.64 | 233 | 2.10 | 0.19 | 0.19 | 0.40 |
| 726001 | 7706601 | 21.10 | 3.10 | 204 | 3.50 | 0.31 | 0.36 | 0.66 |
| 726201 | 7706599 | 12.10 | 2.62 | 224 | 2.40 | 0.22 | 0.12 | 0.34 |
| 726404 | 7706604 | 10.50 | 2.64 | 231 | 2.10 | 0.24 | 0.11 | 0.42 |

**Address:** Suite 2, 28 Outram Street, West Perth WA 6005 **Postal:** PO Box 79, West Perth, WA 6872

**T:** +61 8 9381 5558 **E:** [terrain@terrainminerals.com.au](mailto:terrain@terrainminerals.com.au) **W:** [www.terrainminerals.com.au](http://www.terrainminerals.com.au)

|        |         |       |      |     |      |      |      |      |
|--------|---------|-------|------|-----|------|------|------|------|
| 726603 | 7706603 | 15.90 | 2.92 | 229 | 2.90 | 0.24 | 0.20 | 0.57 |
| 726801 | 7706602 | 10.60 | 2.52 | 235 | 1.90 | 0.21 | 0.12 | 0.48 |
| 727004 | 7706603 | 11.20 | 2.50 | 238 | 1.90 | 0.20 | 0.11 | 0.46 |
| 727200 | 7706602 | 18.30 | 2.87 | 216 | 2.90 | 0.27 | 0.13 | 0.63 |
| 727398 | 7706602 | 26.10 | 3.38 | 202 | 4.00 | 0.32 | 0.21 | 0.59 |
| 727602 | 7706601 | 11.00 | 2.26 | 244 | 1.70 | 0.22 | 0.17 | 0.44 |
| 727804 | 7706601 | 13.70 | 2.58 | 235 | 2.10 | 0.24 | 0.14 | 0.39 |
| 728000 | 7706596 | 16.80 | 2.69 | 230 | 2.50 | 0.24 | 0.21 | 0.57 |
| 728198 | 7706604 | 10.30 | 2.11 | 248 | 1.60 | 0.19 | 0.10 | 0.47 |
| 728395 | 7706605 | 18.60 | 2.91 | 222 | 3.20 | 0.29 | 0.15 | 0.53 |
| 728603 | 7706599 | 25.00 | 3.24 | 199 | 3.70 | 0.30 | 0.16 | 0.58 |
| 728801 | 7706600 | 19.30 | 2.85 | 209 | 3.30 | 0.28 | 0.16 | 0.62 |
| 729001 | 7706601 | 26.70 | 3.01 | 189 | 3.70 | 0.27 | 0.17 | 0.54 |
| 729203 | 7706597 | 16.90 | 2.61 | 211 | 2.90 | 0.25 | 0.11 | 0.59 |
| 729402 | 7706598 | 14.40 | 2.52 | 232 | 2.50 | 0.24 | 0.09 | 0.46 |
| 729599 | 7706602 | 16.90 | 2.67 | 228 | 3.10 | 0.26 | 0.12 | 0.60 |
| 729800 | 7706602 | 20.70 | 3.12 | 208 | 4.10 | 0.34 | 0.17 | 0.57 |
| 730001 | 7706599 | 13.50 | 2.43 | 237 | 2.40 | 0.25 | 0.11 | 0.38 |
| 730201 | 7706603 | 17.20 | 2.76 | 227 | 3.20 | 0.31 | 0.13 | 0.61 |
| 730401 | 7706598 | 16.60 | 2.80 | 221 | 3.40 | 0.33 | 0.13 | 0.57 |
| 730598 | 7706595 | 15.70 | 2.45 | 226 | 3.00 | 0.29 | 0.11 | 0.56 |
| 730800 | 7706599 | 17.60 | 2.38 | 224 | 2.70 | 0.32 | 0.12 | 0.52 |
| 730998 | 7706600 | 23.10 | 2.75 | 214 | 4.10 | 0.33 | 0.13 | 0.68 |
| 731194 | 7706601 | 19.70 | 2.54 | 219 | 3.30 | 0.29 | 0.12 | 0.49 |
| 731403 | 7706602 | 15.90 | 2.05 | 229 | 3.20 | 0.25 | 0.08 | 0.42 |
| 731602 | 7706601 | 16.40 | 2.56 | 236 | 2.70 | 0.31 | 0.12 | 0.56 |
| 731800 | 7706606 | 15.00 | 2.06 | 235 | 3.20 | 0.22 | 0.09 | 0.40 |
| 732001 | 7706599 | 17.20 | 2.09 | 235 | 3.00 | 0.25 | 0.09 | 0.49 |
| 732205 | 7706599 | 15.20 | 2.10 | 243 | 2.40 | 0.23 | 0.08 | 0.39 |
| 732400 | 7706600 | 10.40 | 2.16 | 262 | 1.80 | 0.26 | 0.10 | 0.46 |
| 725802 | 7706398 | 14.80 | 3.15 | 223 | 2.70 | 0.25 | 0.22 | 0.53 |
| 726002 | 7706401 | 16.20 | 2.91 | 225 | 2.70 | 0.28 | 0.16 | 0.56 |
| 726205 | 7706397 | 11.30 | 2.77 | 245 | 5.70 | 0.22 | 0.11 | 0.46 |
| 726398 | 7706398 | 16.00 | 2.99 | 227 | 3.10 | 0.23 | 0.21 | 0.60 |
| 726603 | 7706401 | 20.20 | 3.45 | 220 | 3.50 | 0.29 | 0.20 | 0.51 |
| 726801 | 7706401 | 19.20 | 3.11 | 217 | 3.40 | 0.29 | 0.16 | 0.56 |
| 727000 | 7706396 | 17.70 | 2.76 | 222 | 2.90 | 0.23 | 0.13 | 0.37 |
| 727204 | 7706400 | 18.60 | 2.81 | 220 | 3.10 | 0.25 | 0.15 | 0.44 |
| 727398 | 7706399 | 25.40 | 3.34 | 203 | 4.00 | 0.34 | 0.21 | 0.65 |
| 727603 | 7706401 | 19.60 | 3.08 | 224 | 2.90 | 0.22 | 0.19 | 0.54 |
| 727805 | 7706398 | 21.80 | 3.54 | 209 | 3.40 | 0.29 | 0.17 | 0.69 |

**Address:** Suite 2, 28 Outram Street, West Perth WA 6005 **Postal:** PO Box 79, West Perth, WA 6872

**T:** +61 8 9381 5558 **E:** [terrain@terrainminerals.com.au](mailto:terrain@terrainminerals.com.au) **W:** [www.terrainminerals.com.au](http://www.terrainminerals.com.au)

|        |         |       |      |     |      |      |      |      |
|--------|---------|-------|------|-----|------|------|------|------|
| 727998 | 7706397 | 17.80 | 2.93 | 224 | 7.90 | 0.26 | 0.35 | 0.61 |
| 728197 | 7706400 | 16.10 | 2.71 | 224 | 2.70 | 0.26 | 0.18 | 0.81 |
| 728399 | 7706401 | 14.80 | 2.55 | 226 | 3.90 | 0.26 | 0.10 | 0.52 |
| 728606 | 7706398 | 28.90 | 3.33 | 185 | 4.20 | 0.35 | 0.18 | 0.71 |
| 728802 | 7706401 | 13.30 | 2.21 | 242 | 2.00 | 0.21 | 0.09 | 0.36 |
| 729002 | 7706399 | 13.00 | 2.40 | 230 | 2.40 | 0.24 | 0.10 | 0.48 |
| 729203 | 7706399 | 16.70 | 2.54 | 237 | 2.20 | 0.24 | 0.11 | 0.39 |
| 729401 | 7706399 | 16.90 | 2.70 | 228 | 3.20 | 0.28 | 0.14 | 0.67 |
| 729604 | 7706398 | 16.00 | 2.56 | 233 | 3.00 | 0.27 | 0.10 | 0.47 |
| 729800 | 7706399 | 18.90 | 2.84 | 221 | 3.40 | 0.31 | 0.14 | 0.62 |
| 730001 | 7706401 | 18.90 | 2.51 | 233 | 3.20 | 0.27 | 0.10 | 0.52 |
| 730200 | 7706403 | 16.00 | 2.60 | 227 | 3.10 | 0.29 | 0.13 | 0.56 |
| 730401 | 7706401 | 20.50 | 2.62 | 221 | 3.60 | 0.29 | 0.13 | 0.58 |
| 730601 | 7706395 | 20.00 | 2.48 | 215 | 3.70 | 0.34 | 0.12 | 0.60 |
| 730800 | 7706401 | 10.30 | 2.03 | 250 | 2.00 | 0.21 | 0.08 | 0.35 |
| 730999 | 7706401 | 13.30 | 2.03 | 215 | 3.00 | 0.27 | 0.10 | 0.37 |
| 731196 | 7706398 | 12.70 | 1.82 | 247 | 1.30 | 0.22 | 0.07 | 0.29 |
| 731401 | 7706399 | 19.30 | 2.30 | 232 | 3.10 | 0.28 | 0.10 | 0.55 |
| 731596 | 7706402 | 17.40 | 2.54 | 243 | 2.20 | 0.29 | 0.11 | 0.40 |
| 731801 | 7706399 | 23.20 | 2.32 | 234 | 3.10 | 0.26 | 0.11 | 0.43 |
| 731994 | 7706403 | 13.70 | 2.00 | 246 | 2.70 | 0.21 | 0.10 | 0.69 |
| 732200 | 7706402 | 17.70 | 2.07 | 234 | 2.60 | 0.24 | 0.10 | 0.50 |
| 732400 | 7706402 | 15.80 | 2.44 | 220 | 3.00 | 0.30 | 0.12 | 0.54 |
| 732602 | 7706401 | 13.00 | 2.25 | 228 | 3.20 | 0.26 | 0.11 | 0.62 |
| 732804 | 7706402 | 10.10 | 1.78 | 266 | 1.10 | 0.15 | 0.07 | 0.32 |
| 732997 | 7706400 | 14.70 | 2.04 | 229 | 2.30 | 0.26 | 0.09 | 0.53 |
| 725803 | 7706201 | 17.00 | 3.33 | 209 | 3.10 | 0.31 | 0.21 | 0.62 |
| 726003 | 7706196 | 11.50 | 2.73 | 235 | 2.00 | 0.22 | 0.11 | 0.39 |
| 726200 | 7706204 | 16.20 | 3.18 | 219 | 2.70 | 0.29 | 0.14 | 0.59 |
| 726398 | 7706199 | 10.50 | 2.26 | 243 | 1.70 | 0.21 | 0.11 | 0.46 |
| 726599 | 7706200 | 9.40  | 2.25 | 247 | 1.60 | 0.20 | 0.11 | 0.45 |
| 726801 | 7706200 | 19.30 | 2.94 | 221 | 2.70 | 0.27 | 0.16 | 0.77 |
| 727003 | 7706196 | 20.60 | 3.02 | 214 | 3.20 | 0.31 | 0.16 | 0.64 |
| 727197 | 7706199 | 24.80 | 2.99 | 202 | 3.70 | 0.31 | 0.17 | 0.73 |
| 727408 | 7706196 | 13.40 | 2.36 | 232 | 1.80 | 0.19 | 0.13 | 0.32 |
| 727599 | 7706205 | 18.40 | 2.85 | 222 | 2.70 | 0.25 | 0.16 | 0.52 |
| 727800 | 7706197 | 23.00 | 3.17 | 205 | 3.30 | 0.26 | 0.21 | 0.48 |
| 728001 | 7706201 | 20.10 | 2.95 | 213 | 3.00 | 0.26 | 0.14 | 0.40 |
| 728202 | 7706201 | 19.20 | 3.55 | 214 | 3.00 | 0.28 | 0.23 | 0.54 |
| 728403 | 7706201 | 20.20 | 3.05 | 203 | 3.30 | 0.29 | 0.15 | 0.47 |
| 728599 | 7706201 | 22.90 | 3.08 | 193 | 3.20 | 0.28 | 0.17 | 0.49 |

**Address:** Suite 2, 28 Outram Street, West Perth WA 6005 **Postal:** PO Box 79, West Perth, WA 6872

**T:** +61 8 9381 5558 **E:** [terrain@terrainminerals.com.au](mailto:terrain@terrainminerals.com.au) **W:** [www.terrainminerals.com.au](http://www.terrainminerals.com.au)

|        |         |       |      |     |      |      |      |      |
|--------|---------|-------|------|-----|------|------|------|------|
| 728796 | 7706200 | 13.00 | 2.26 | 225 | 2.10 | 0.22 | 0.10 | 0.44 |
| 729000 | 7706201 | 15.20 | 2.41 | 232 | 2.40 | 0.25 | 0.09 | 0.40 |
| 729203 | 7706199 | 16.10 | 2.67 | 221 | 3.00 | 0.28 | 0.12 | 0.55 |
| 729402 | 7706201 | 21.40 | 2.90 | 212 | 3.70 | 0.36 | 0.20 | 0.50 |
| 729600 | 7706201 | 26.70 | 3.06 | 198 | 4.20 | 0.36 | 0.15 | 0.63 |
| 729804 | 7706200 | 22.10 | 3.25 | 206 | 4.00 | 0.36 | 0.15 | 0.77 |
| 730000 | 7706199 | 30.90 | 3.71 | 169 | 5.10 | 0.41 | 0.20 | 0.81 |
| 730199 | 7706200 | 19.50 | 2.49 | 214 | 3.10 | 0.30 | 0.13 | 0.50 |
| 730402 | 7706197 | 6.50  | 1.62 | 272 | 1.00 | 0.15 | 0.06 | 0.28 |
| 730603 | 7706202 | 17.20 | 2.25 | 229 | 3.10 | 0.28 | 0.11 | 0.52 |
| 730800 | 7706198 | 8.20  | 1.71 | 260 | 1.60 | 0.17 | 0.08 | 0.32 |
| 731001 | 7706201 | 19.30 | 2.47 | 227 | 2.40 | 0.28 | 0.14 | 0.44 |
| 731198 | 7706198 | 8.50  | 2.02 | 248 | 1.60 | 0.22 | 0.08 | 0.43 |
| 731401 | 7706198 | 8.10  | 1.80 | 262 | 1.70 | 0.15 | 0.06 | 0.37 |
| 731602 | 7706202 | 12.50 | 2.22 | 241 | 1.30 | 0.21 | 0.09 | 0.50 |
| 731803 | 7706201 | 17.40 | 2.51 | 229 | 3.20 | 0.34 | 0.11 | 0.55 |
| 732001 | 7706198 | 20.00 | 2.21 | 228 | 2.20 | 0.22 | 0.10 | 0.52 |
| 732202 | 7706196 | 17.70 | 2.36 | 227 | 2.50 | 0.28 | 0.10 | 0.48 |
| 732403 | 7706199 | 12.00 | 2.30 | 230 | 2.30 | 0.27 | 0.10 | 0.54 |
| 732603 | 7706198 | 15.30 | 2.29 | 227 | 2.10 | 0.26 | 0.18 | 0.54 |
| 732805 | 7706193 | 16.10 | 2.39 | 220 | 2.90 | 0.28 | 0.11 | 0.44 |
| 733048 | 7706196 | 10.70 | 2.45 | 231 | 1.30 | 0.18 | 0.09 | 0.34 |
| 733199 | 7706198 | 11.30 | 2.59 | 229 | 1.60 | 0.18 | 0.10 | 0.42 |
| 733601 | 7706200 | 7.50  | 2.17 | 248 | 0.80 | 0.11 | 0.06 | 0.15 |
| 725801 | 7705997 | 17.00 | 2.92 | 220 | 2.90 | 0.28 | 0.20 | 0.56 |
| 726004 | 7706001 | 16.50 | 3.12 | 220 | 2.90 | 0.26 | 0.17 | 0.55 |
| 726201 | 7705998 | 15.40 | 2.91 | 221 | 2.90 | 0.28 | 0.15 | 0.55 |
| 726401 | 7705999 | 23.00 | 3.39 | 206 | 3.40 | 0.32 | 0.18 | 0.60 |
| 726598 | 7706000 | 14.30 | 2.61 | 225 | 2.30 | 0.23 | 0.14 | 0.45 |
| 726799 | 7706000 | 19.20 | 3.09 | 214 | 2.90 | 0.23 | 0.16 | 0.39 |
| 727002 | 7705999 | 23.90 | 3.28 | 202 | 3.60 | 0.33 | 0.16 | 0.50 |
| 727197 | 7706000 | 25.20 | 3.05 | 201 | 3.30 | 0.28 | 0.16 | 0.49 |
| 727399 | 7706001 | 20.70 | 2.73 | 221 | 2.80 | 0.23 | 0.37 | 0.56 |
| 727600 | 7706000 | 21.90 | 2.92 | 212 | 3.00 | 0.27 | 0.17 | 0.70 |
| 727799 | 7705999 | 18.80 | 2.84 | 216 | 2.80 | 0.25 | 0.15 | 0.51 |
| 728001 | 7705998 | 20.90 | 2.98 | 214 | 2.70 | 0.26 | 0.13 | 0.53 |
| 728200 | 7705998 | 17.10 | 2.87 | 210 | 2.70 | 0.26 | 0.14 | 0.48 |
| 728401 | 7706001 | 18.50 | 2.92 | 213 | 2.90 | 0.27 | 0.13 | 0.43 |
| 728600 | 7706002 | 23.30 | 2.86 | 200 | 3.30 | 0.28 | 0.14 | 0.51 |
| 728801 | 7706001 | 22.00 | 2.74 | 213 | 3.10 | 0.31 | 0.12 | 0.54 |
| 729000 | 7706001 | 13.50 | 2.41 | 231 | 2.10 | 0.23 | 0.10 | 0.51 |

**Address:** Suite 2, 28 Outram Street, West Perth WA 6005 **Postal:** PO Box 79, West Perth, WA 6872

**T:** +61 8 9381 5558 **E:** [terrain@terrainminerals.com.au](mailto:terrain@terrainminerals.com.au) **W:** [www.terrainminerals.com.au](http://www.terrainminerals.com.au)

|        |         |       |      |     |      |      |      |      |
|--------|---------|-------|------|-----|------|------|------|------|
| 729202 | 7706000 | 13.50 | 2.08 | 238 | 1.80 | 0.18 | 0.08 | 0.37 |
| 729400 | 7706002 | 21.40 | 3.08 | 190 | 3.70 | 0.34 | 0.15 | 0.63 |
| 729602 | 7706001 | 17.60 | 2.64 | 202 | 3.30 | 0.30 | 0.13 | 0.58 |
| 729805 | 7706001 | 15.10 | 2.64 | 219 | 2.70 | 0.27 | 0.12 | 0.56 |
| 730001 | 7706003 | 17.60 | 2.46 | 212 | 3.00 | 0.29 | 0.12 | 0.52 |
| 730201 | 7706000 | 14.40 | 2.35 | 226 | 2.40 | 0.27 | 0.10 | 0.56 |
| 730400 | 7705999 | 18.30 | 2.16 | 221 | 3.30 | 0.26 | 0.11 | 0.57 |
| 730601 | 7705999 | 18.00 | 2.28 | 238 | 3.10 | 0.26 | 0.10 | 0.51 |
| 730799 | 7705998 | 9.00  | 1.83 | 257 | 1.80 | 0.19 | 0.07 | 0.29 |
| 731002 | 7706005 | 6.00  | 1.65 | 271 | 1.20 | 0.18 | 0.06 | 0.35 |
| 731197 | 7706002 | 7.40  | 1.78 | 272 | 1.30 | 0.18 | 0.05 | 0.37 |
| 731403 | 7706001 | 14.40 | 2.17 | 232 | 2.90 | 0.26 | 0.10 | 0.52 |
| 731598 | 7706001 | 17.60 | 2.04 | 225 | 2.50 | 0.24 | 0.09 | 0.48 |
| 731791 | 7705992 | 13.40 | 2.06 | 238 | 2.50 | 0.23 | 0.10 | 0.44 |
| 731998 | 7706002 | 20.90 | 2.07 | 224 | 2.20 | 0.24 | 0.08 | 0.44 |
| 732198 | 7706000 | 12.90 | 2.05 | 252 | 1.30 | 0.23 | 0.07 | 0.39 |
| 732399 | 7706001 | 21.60 | 2.05 | 224 | 2.60 | 0.22 | 0.09 | 0.50 |
| 732604 | 7705997 | 37.20 | 1.41 | 269 | 1.00 | 0.11 | 0.06 | 0.21 |
| 732800 | 7706000 | 9.90  | 2.17 | 256 | 1.00 | 0.15 | 0.08 | 0.34 |
| 733037 | 7705971 | 8.60  | 2.17 | 252 | 1.10 | 0.13 | 0.08 | 0.32 |
| 733227 | 7706001 | 9.10  | 2.15 | 245 | 1.20 | 0.14 | 0.07 | 0.33 |
| 733462 | 7705994 | 9.30  | 2.31 | 252 | 1.10 | 0.15 | 0.07 | 0.30 |
| 733602 | 7705997 | 9.20  | 2.11 | 256 | 1.40 | 0.18 | 0.07 | 0.30 |
| 733806 | 7706007 | 10.40 | 2.06 | 236 | 1.70 | 0.28 | 0.08 | 0.41 |
| 733998 | 7706001 | 8.70  | 1.90 | 242 | 1.90 | 0.32 | 0.08 | 0.44 |
| 734203 | 7706002 | 8.10  | 1.80 | 234 | 2.10 | 0.32 | 0.09 | 0.49 |
| 734401 | 7706001 | 9.50  | 2.15 | 225 | 2.00 | 0.39 | 0.10 | 0.61 |
| 734594 | 7705999 | 27.90 | 3.63 | 185 | 4.70 | 0.50 | 0.24 | 0.91 |
| 734801 | 7706003 | 9.50  | 2.12 | 226 | 2.00 | 0.38 | 0.10 | 0.65 |
| 725798 | 7705801 | 12.50 | 2.55 | 234 | 2.00 | 0.26 | 0.13 | 0.51 |
| 725998 | 7705797 | 20.10 | 3.08 | 222 | 2.80 | 0.24 | 0.18 | 0.61 |
| 726205 | 7705802 | 21.60 | 2.97 | 217 | 2.80 | 0.23 | 0.18 | 0.52 |
| 726402 | 7705801 | 16.70 | 2.82 | 220 | 3.00 | 0.26 | 0.14 | 0.64 |
| 726601 | 7705799 | 17.10 | 3.24 | 229 | 2.40 | 0.22 | 0.44 | 0.47 |
| 726807 | 7705800 | 24.10 | 2.93 | 204 | 3.50 | 0.29 | 0.15 | 0.56 |
| 726999 | 7705801 | 18.50 | 2.63 | 223 | 2.80 | 0.29 | 0.14 | 0.53 |
| 727203 | 7705801 | 27.90 | 3.08 | 198 | 3.80 | 0.32 | 0.17 | 0.62 |
| 727404 | 7705801 | 19.00 | 2.58 | 221 | 2.60 | 0.26 | 0.14 | 0.52 |
| 727605 | 7705801 | 13.30 | 2.59 | 243 | 1.90 | 0.18 | 0.12 | 0.45 |
| 727800 | 7705800 | 22.60 | 3.01 | 207 | 2.90 | 0.30 | 0.14 | 0.61 |
| 728006 | 7705799 | 20.60 | 2.99 | 216 | 3.00 | 0.26 | 0.13 | 0.56 |

**Address:** Suite 2, 28 Outram Street, West Perth WA 6005 **Postal:** PO Box 79, West Perth, WA 6872

**T:** +61 8 9381 5558 **E:** [terrain@terrainminerals.com.au](mailto:terrain@terrainminerals.com.au) **W:** [www.terrainminerals.com.au](http://www.terrainminerals.com.au)

|        |         |       |      |     |      |      |      |      |
|--------|---------|-------|------|-----|------|------|------|------|
| 728203 | 7705797 | 18.20 | 2.63 | 227 | 2.70 | 0.28 | 0.13 | 0.51 |
| 728400 | 7705800 | 21.70 | 2.75 | 222 | 3.20 | 0.28 | 0.14 | 0.50 |
| 728602 | 7705801 | 13.70 | 2.51 | 235 | 2.30 | 0.28 | 0.10 | 0.55 |
| 728801 | 7705799 | 17.80 | 2.52 | 220 | 2.60 | 0.26 | 0.11 | 0.52 |
| 729001 | 7705800 | 18.80 | 2.54 | 225 | 2.70 | 0.23 | 0.11 | 0.51 |
| 729201 | 7705802 | 22.40 | 2.65 | 211 | 3.30 | 0.27 | 0.13 | 0.52 |
| 729390 | 7705797 | 21.50 | 2.60 | 207 | 3.20 | 0.29 | 0.14 | 0.50 |
| 729594 | 7705796 | 16.80 | 2.65 | 215 | 2.80 | 0.29 | 0.13 | 0.61 |
| 729803 | 7705799 | 22.40 | 3.15 | 203 | 3.60 | 0.31 | 0.18 | 2.06 |
| 730000 | 7705799 | 21.70 | 2.54 | 221 | 3.40 | 0.29 | 0.14 | 0.78 |
| 730202 | 7705799 | 10.70 | 1.80 | 255 | 1.90 | 0.20 | 0.08 | 0.45 |
| 730400 | 7705800 | 21.00 | 2.48 | 214 | 3.50 | 0.31 | 0.13 | 0.50 |
| 730601 | 7705800 | 11.70 | 2.35 | 237 | 2.20 | 0.24 | 0.09 | 0.54 |
| 730800 | 7705797 | 17.10 | 2.57 | 226 | 3.10 | 0.29 | 0.12 | 0.64 |
| 731001 | 7705800 | 9.30  | 2.05 | 259 | 1.80 | 0.23 | 0.08 | 0.44 |
| 731199 | 7705798 | 20.10 | 2.38 | 223 | 3.10 | 0.27 | 0.12 | 0.52 |
| 731396 | 7705798 | 19.90 | 2.34 | 229 | 2.70 | 0.30 | 0.12 | 0.47 |
| 731598 | 7705802 | 15.10 | 2.36 | 232 | 2.30 | 0.31 | 0.12 | 0.54 |
| 731799 | 7705798 | 14.80 | 2.14 | 238 | 2.00 | 0.25 | 0.12 | 0.49 |
| 732001 | 7705805 | 10.00 | 2.02 | 244 | 1.30 | 0.22 | 0.07 | 0.36 |
| 732204 | 7705803 | 10.90 | 2.02 | 256 | 1.40 | 0.18 | 0.07 | 0.36 |
| 732403 | 7705800 | 6.90  | 2.17 | 254 | 1.00 | 0.13 | 0.07 | 0.20 |
| 732610 | 7705798 | 14.30 | 2.13 | 240 | 1.20 | 0.19 | 0.07 | 0.46 |
| 732801 | 7705799 | 12.30 | 2.18 | 235 | 1.70 | 0.21 | 0.10 | 0.34 |
| 733036 | 7705793 | 9.80  | 2.45 | 250 | 0.90 | 0.12 | 0.11 | 0.24 |
| 733203 | 7705809 | 9.70  | 2.63 | 240 | 0.80 | 0.13 | 0.08 | 0.24 |
| 733447 | 7705804 | 12.30 | 2.44 | 244 | 1.90 | 0.22 | 0.10 | 0.39 |
| 733606 | 7705802 | 11.40 | 2.25 | 245 | 1.30 | 0.20 | 0.08 | 0.41 |
| 733798 | 7705801 | 11.90 | 2.07 | 239 | 2.50 | 0.32 | 0.10 | 0.60 |
| 734002 | 7705800 | 13.00 | 2.29 | 227 | 3.30 | 0.44 | 0.19 | 0.54 |
| 734198 | 7705799 | 26.90 | 3.47 | 188 | 4.30 | 0.47 | 0.19 | 0.63 |
| 734403 | 7705793 | 13.90 | 2.44 | 222 | 2.70 | 0.41 | 0.13 | 1.04 |
| 734605 | 7705801 | 12.90 | 2.57 | 219 | 2.40 | 0.34 | 0.11 | 0.58 |
| 734806 | 7705802 | 17.00 | 2.86 | 205 | 3.60 | 0.45 | 0.15 | 0.62 |
| 735002 | 7705798 | 9.50  | 2.15 | 229 | 2.00 | 0.30 | 0.09 | 0.51 |
| 735201 | 7705802 | 10.60 | 2.23 | 224 | 2.10 | 0.34 | 0.10 | 0.53 |
| 735404 | 7705798 | 8.80  | 1.97 | 229 | 2.00 | 0.34 | 0.08 | 0.53 |
| 735603 | 7705805 | 10.50 | 2.20 | 222 | 2.40 | 0.42 | 0.11 | 0.54 |
| 735806 | 7705790 | 11.20 | 2.23 | 215 | 2.40 | 0.41 | 0.11 | 0.52 |
| 725800 | 7705603 | 21.00 | 3.14 | 213 | 3.20 | 0.25 | 0.17 | 0.52 |
| 726003 | 7705602 | 15.80 | 2.85 | 232 | 2.40 | 0.25 | 0.27 | 0.50 |

**Address:** Suite 2, 28 Outram Street, West Perth WA 6005 **Postal:** PO Box 79, West Perth, WA 6872

**T:** +61 8 9381 5558 **E:** [terrain@terrainminerals.com.au](mailto:terrain@terrainminerals.com.au) **W:** [www.terrainminerals.com.au](http://www.terrainminerals.com.au)

|        |         |       |      |     |      |      |      |      |
|--------|---------|-------|------|-----|------|------|------|------|
| 726200 | 7705602 | 17.90 | 2.68 | 222 | 2.60 | 0.25 | 0.13 | 0.51 |
| 726401 | 7705592 | 23.80 | 3.16 | 208 | 3.30 | 0.31 | 0.17 | 0.62 |
| 726595 | 7705607 | 17.40 | 2.60 | 229 | 2.40 | 0.24 | 0.12 | 0.51 |
| 726798 | 7705600 | 33.50 | 3.08 | 202 | 3.40 | 0.28 | 0.15 | 0.62 |
| 727004 | 7705599 | 21.40 | 2.95 | 214 | 2.70 | 0.25 | 0.16 | 0.55 |
| 727212 | 7705626 | 15.70 | 2.34 | 246 | 1.80 | 0.18 | 0.09 | 0.37 |
| 727399 | 7705603 | 23.90 | 2.92 | 218 | 3.00 | 0.29 | 0.17 | 0.51 |
| 727600 | 7705602 | 24.70 | 2.77 | 207 | 2.80 | 0.25 | 0.21 | 0.71 |
| 727804 | 7705601 | 30.40 | 2.92 | 204 | 3.10 | 0.28 | 0.15 | 0.54 |
| 728002 | 7705604 | 19.50 | 2.23 | 226 | 2.60 | 0.25 | 0.13 | 0.48 |
| 728201 | 7705599 | 18.80 | 2.58 | 221 | 2.30 | 0.26 | 0.12 | 0.48 |
| 728402 | 7705602 | 20.70 | 2.62 | 223 | 3.10 | 0.27 | 0.13 | 0.55 |
| 728603 | 7705602 | 12.00 | 1.99 | 241 | 1.80 | 0.19 | 0.07 | 0.34 |
| 728802 | 7705604 | 28.10 | 2.93 | 201 | 3.90 | 0.35 | 0.15 | 0.68 |
| 729000 | 7705597 | 20.70 | 2.74 | 210 | 3.20 | 0.27 | 0.14 | 0.63 |
| 729205 | 7705602 | 27.20 | 3.16 | 196 | 3.60 | 0.32 | 0.15 | 0.62 |
| 729399 | 7705599 | 17.30 | 2.58 | 225 | 2.40 | 0.26 | 0.12 | 0.56 |
| 729597 | 7705602 | 27.00 | 2.45 | 201 | 2.70 | 0.26 | 0.13 | 0.47 |
| 729803 | 7705600 | 21.00 | 2.20 | 217 | 2.60 | 0.26 | 0.10 | 0.44 |
| 729999 | 7705600 | 17.50 | 2.06 | 222 | 2.10 | 0.24 | 0.09 | 0.45 |
| 730205 | 7705597 | 26.20 | 2.48 | 202 | 3.20 | 0.28 | 0.11 | 0.55 |
| 730400 | 7705599 | 8.30  | 1.80 | 266 | 1.60 | 0.23 | 0.07 | 0.40 |
| 730601 | 7705598 | 12.70 | 1.94 | 252 | 2.10 | 0.24 | 0.10 | 0.50 |
| 730796 | 7705596 | 20.60 | 2.72 | 218 | 3.70 | 0.36 | 0.15 | 0.61 |
| 730998 | 7705601 | 15.80 | 2.40 | 237 | 2.50 | 0.29 | 0.11 | 0.45 |
| 731200 | 7705602 | 18.50 | 2.56 | 220 | 3.30 | 0.31 | 0.13 | 0.62 |
| 731401 | 7705604 | 13.00 | 2.01 | 231 | 3.20 | 0.28 | 0.11 | 0.43 |
| 731599 | 7705604 | 17.40 | 2.59 | 224 | 3.20 | 0.33 | 0.12 | 0.67 |
| 731802 | 7705604 | 11.60 | 2.13 | 242 | 1.30 | 0.17 | 0.08 | 0.50 |
| 732004 | 7705600 | 10.40 | 2.28 | 243 | 1.30 | 0.22 | 0.09 | 0.36 |
| 732202 | 7705602 | 10.70 | 2.37 | 239 | 1.20 | 0.19 | 0.10 | 0.37 |
| 732398 | 7705597 | 14.80 | 2.59 | 244 | 2.00 | 0.20 | 0.11 | 0.36 |
| 732603 | 7705600 | 18.50 | 2.04 | 228 | 3.60 | 0.26 | 0.11 | 0.65 |
| 732798 | 7705603 | 19.30 | 2.11 | 218 | 3.10 | 0.28 | 0.10 | 0.46 |
| 732999 | 7705614 | 7.40  | 1.84 | 270 | 0.90 | 0.13 | 0.06 | 0.25 |
| 733179 | 7705598 | 12.60 | 2.72 | 236 | 1.30 | 0.16 | 0.09 | 0.26 |
| 733396 | 7705603 | 10.50 | 2.35 | 250 | 1.20 | 0.15 | 0.08 | 0.27 |
| 733606 | 7705599 | 8.80  | 1.92 | 268 | 1.30 | 0.21 | 0.07 | 0.36 |
| 733800 | 7705600 | 8.40  | 1.95 | 268 | 1.00 | 0.27 | 0.08 | 0.32 |
| 734006 | 7705602 | 19.10 | 2.69 | 238 | 3.60 | 0.35 | 0.15 | 0.61 |
| 734205 | 7705597 | 13.20 | 2.48 | 219 | 2.70 | 0.43 | 0.12 | 0.65 |

**Address:** Suite 2, 28 Outram Street, West Perth WA 6005 **Postal:** PO Box 79, West Perth, WA 6872

**T:** +61 8 9381 5558 **E:** [terrain@terrainminerals.com.au](mailto:terrain@terrainminerals.com.au) **W:** [www.terrainminerals.com.au](http://www.terrainminerals.com.au)

|        |         |       |      |     |      |      |      |      |
|--------|---------|-------|------|-----|------|------|------|------|
| 734407 | 7705598 | 14.10 | 2.48 | 221 | 2.90 | 0.39 | 0.17 | 0.64 |
| 734605 | 7705601 | 11.90 | 2.44 | 221 | 2.30 | 0.38 | 0.11 | 0.52 |
| 734803 | 7705601 | 13.50 | 2.47 | 218 | 2.80 | 0.34 | 0.13 | 0.45 |
| 734999 | 7705596 | 10.80 | 2.12 | 235 | 2.40 | 0.40 | 0.10 | 0.42 |
| 735204 | 7705601 | 11.20 | 2.34 | 227 | 2.60 | 0.35 | 0.10 | 0.44 |
| 735400 | 7705600 | 18.20 | 2.90 | 204 | 3.90 | 0.47 | 0.16 | 0.57 |
| 735601 | 7705600 | 28.80 | 3.74 | 176 | 5.60 | 0.53 | 0.24 | 0.85 |
| 735801 | 7705599 | 9.40  | 2.11 | 228 | 2.30 | 0.34 | 0.09 | 0.39 |
| 736005 | 7705600 | 11.30 | 2.30 | 219 | 2.70 | 0.43 | 0.11 | 0.56 |
| 736203 | 7705598 | 21.30 | 3.19 | 194 | 4.00 | 0.44 | 0.17 | 0.67 |
| 736406 | 7705597 | 10.60 | 2.25 | 220 | 2.30 | 0.39 | 0.11 | 0.51 |
| 726000 | 7705397 | 23.50 | 3.19 | 212 | 3.30 | 0.31 | 0.17 | 0.80 |
| 726200 | 7705402 | 18.10 | 2.90 | 221 | 2.50 | 0.26 | 0.14 | 0.56 |
| 726401 | 7705403 | 9.50  | 2.10 | 251 | 1.50 | 0.19 | 0.09 | 0.33 |
| 726596 | 7705401 | 12.00 | 2.24 | 239 | 1.70 | 0.19 | 0.11 | 0.48 |
| 726804 | 7705401 | 10.40 | 2.23 | 245 | 1.20 | 0.22 | 0.08 | 0.31 |
| 727000 | 7705398 | 20.50 | 2.48 | 225 | 2.70 | 0.24 | 0.12 | 0.39 |
| 727199 | 7705399 | 15.20 | 2.41 | 230 | 2.30 | 0.22 | 0.11 | 0.49 |
| 727400 | 7705400 | 14.10 | 2.46 | 237 | 2.10 | 0.23 | 0.09 | 0.32 |
| 727599 | 7705396 | 23.70 | 3.20 | 222 | 3.00 | 0.26 | 0.17 | 0.47 |
| 727797 | 7705398 | 8.40  | 2.43 | 242 | 1.00 | 0.14 | 0.08 | 0.20 |
| 728002 | 7705401 | 7.70  | 2.04 | 248 | 1.00 | 0.17 | 0.08 | 0.26 |
| 728199 | 7705402 | 23.10 | 2.40 | 221 | 2.80 | 0.21 | 0.16 | 0.47 |
| 728401 | 7705401 | 21.80 | 2.87 | 224 | 2.00 | 0.24 | 0.11 | 0.47 |
| 728599 | 7705401 | 25.50 | 2.77 | 220 | 3.00 | 0.27 | 0.14 | 0.58 |
| 728803 | 7705400 | 22.90 | 2.63 | 214 | 3.00 | 0.27 | 0.12 | 0.53 |
| 729001 | 7705401 | 14.70 | 2.00 | 236 | 2.00 | 0.24 | 0.09 | 0.42 |
| 729199 | 7705402 | 18.20 | 2.31 | 223 | 3.30 | 0.26 | 0.13 | 0.72 |
| 729402 | 7705403 | 10.70 | 1.73 | 250 | 1.40 | 0.22 | 0.09 | 0.36 |
| 729599 | 7705397 | 12.90 | 2.05 | 238 | 1.80 | 0.30 | 0.15 | 0.67 |
| 729800 | 7705401 | 14.80 | 1.94 | 240 | 3.30 | 0.25 | 0.10 | 0.63 |
| 730000 | 7705399 | 18.90 | 2.06 | 230 | 3.20 | 0.26 | 0.11 | 0.51 |
| 730204 | 7705398 | 13.50 | 1.81 | 251 | 2.20 | 0.25 | 0.08 | 0.44 |
| 730400 | 7705398 | 17.20 | 2.07 | 233 | 3.10 | 0.30 | 0.10 | 0.55 |
| 730601 | 7705399 | 16.90 | 2.22 | 232 | 2.30 | 0.25 | 0.10 | 0.48 |
| 730804 | 7705402 | 25.90 | 3.27 | 184 | 4.80 | 0.39 | 0.19 | 0.81 |
| 731001 | 7705398 | 16.10 | 2.47 | 214 | 8.00 | 0.30 | 0.13 | 0.76 |
| 731199 | 7705403 | 15.60 | 2.20 | 234 | 1.90 | 0.23 | 0.09 | 0.44 |
| 731395 | 7705398 | 8.40  | 1.83 | 257 | 1.50 | 0.22 | 0.06 | 0.43 |
| 731601 | 7705403 | 12.50 | 2.39 | 228 | 2.70 | 0.30 | 0.09 | 0.52 |
| 731802 | 7705399 | 11.80 | 2.39 | 237 | 2.10 | 0.26 | 0.10 | 0.51 |

**Address:** Suite 2, 28 Outram Street, West Perth WA 6005 **Postal:** PO Box 79, West Perth, WA 6872

**T:** +61 8 9381 5558 **E:** [terrain@terrainminerals.com.au](mailto:terrain@terrainminerals.com.au) **W:** [www.terrainminerals.com.au](http://www.terrainminerals.com.au)

|        |         |       |      |     |      |      |      |      |
|--------|---------|-------|------|-----|------|------|------|------|
| 732001 | 7705397 | 12.20 | 2.39 | 236 | 1.60 | 0.22 | 0.10 | 0.39 |
| 732204 | 7705399 | 10.80 | 2.37 | 246 | 1.80 | 0.21 | 0.09 | 0.42 |
| 732402 | 7705400 | 16.00 | 2.45 | 225 | 2.90 | 0.33 | 0.11 | 0.56 |
| 732598 | 7705402 | 14.60 | 1.27 | 233 | 1.60 | 0.21 | 0.07 | 0.37 |
| 732803 | 7705399 | 16.90 | 2.92 | 229 | 1.50 | 0.22 | 0.12 | 0.46 |
| 733001 | 7705401 | 12.90 | 2.51 | 238 | 1.50 | 0.26 | 0.10 | 0.39 |
| 733276 | 7705388 | 10.20 | 2.50 | 249 | 1.00 | 0.17 | 0.07 | 0.29 |
| 733399 | 7705402 | 8.70  | 2.09 | 257 | 1.40 | 0.20 | 0.09 | 0.42 |
| 733601 | 7705394 | 12.20 | 2.29 | 243 | 1.80 | 0.30 | 0.10 | 0.47 |
| 733804 | 7705402 | 11.30 | 2.32 | 249 | 2.90 | 0.29 | 0.12 | 0.63 |
| 733996 | 7705400 | 9.40  | 2.11 | 256 | 1.80 | 0.32 | 0.09 | 0.54 |
| 734202 | 7705400 | 15.80 | 2.80 | 232 | 3.30 | 0.43 | 0.13 | 0.64 |
| 734400 | 7705398 | 15.10 | 2.65 | 218 | 2.80 | 0.43 | 0.13 | 0.67 |
| 734604 | 7705409 | 7.90  | 1.97 | 252 | 1.70 | 0.29 | 0.09 | 0.40 |
| 734798 | 7705397 | 8.50  | 2.00 | 240 | 2.00 | 0.35 | 0.09 | 0.64 |
| 735002 | 7705400 | 10.60 | 2.16 | 232 | 2.40 | 0.41 | 0.10 | 0.45 |
| 735199 | 7705399 | 10.40 | 2.21 | 224 | 2.40 | 0.37 | 0.10 | 0.47 |
| 735397 | 7705395 | 8.70  | 2.21 | 227 | 2.30 | 0.34 | 0.09 | 0.51 |
| 735597 | 7705399 | 6.70  | 1.91 | 234 | 1.60 | 0.26 | 0.07 | 0.39 |
| 735800 | 7705400 | 12.70 | 2.52 | 215 | 2.90 | 0.36 | 0.12 | 0.50 |
| 736002 | 7705401 | 13.00 | 2.43 | 210 | 3.00 | 0.41 | 0.13 | 0.53 |
| 736198 | 7705403 | 11.00 | 2.24 | 216 | 2.10 | 0.41 | 0.11 | 0.45 |
| 736399 | 7705401 | 16.80 | 2.85 | 196 | 3.70 | 0.44 | 0.15 | 0.67 |
| 736600 | 7705401 | 13.00 | 2.51 | 216 | 2.70 | 0.50 | 0.11 | 0.59 |
| 736797 | 7705401 | 23.10 | 3.05 | 197 | 5.40 | 0.54 | 0.19 | 0.75 |
| 736955 | 7705395 | 15.40 | 2.49 | 218 | 2.50 | 0.37 | 0.13 | 0.59 |
| 727403 | 7705200 | 13.20 | 3.15 | 220 | 1.40 | 0.17 | 0.13 | 0.31 |
| 727600 | 7705201 | 10.20 | 2.82 | 231 | 1.00 | 0.21 | 0.11 | 0.34 |
| 727798 | 7705199 | 7.80  | 2.00 | 237 | 1.00 | 0.10 | 0.07 | 0.20 |
| 727996 | 7705198 | 13.90 | 3.02 | 222 | 1.70 | 0.29 | 0.13 | 0.38 |
| 728202 | 7705201 | 17.90 | 3.05 | 217 | 1.60 | 0.20 | 0.15 | 0.47 |
| 728399 | 7705205 | 19.20 | 3.51 | 217 | 1.80 | 0.23 | 0.17 | 0.44 |
| 728600 | 7705201 | 14.50 | 3.02 | 220 | 1.60 | 0.19 | 0.12 | 0.38 |
| 728799 | 7705200 | 8.60  | 2.24 | 245 | 1.00 | 0.20 | 0.09 | 0.36 |
| 729000 | 7705201 | 9.60  | 2.37 | 239 | 1.20 | 0.18 | 0.09 | 0.30 |
| 729198 | 7705200 | 13.30 | 2.27 | 231 | 1.50 | 0.27 | 0.10 | 0.48 |
| 729403 | 7705199 | 11.60 | 1.88 | 247 | 1.70 | 0.19 | 0.09 | 0.46 |
| 729601 | 7705209 | 12.90 | 2.07 | 238 | 1.40 | 0.21 | 0.09 | 0.43 |
| 729804 | 7705201 | 12.60 | 1.91 | 238 | 1.40 | 0.22 | 0.07 | 0.46 |
| 730004 | 7705200 | 13.50 | 1.82 | 250 | 2.90 | 0.20 | 0.09 | 0.35 |
| 730204 | 7705202 | 15.10 | 2.33 | 224 | 3.40 | 0.28 | 0.12 | 0.63 |

**Address:** Suite 2, 28 Outram Street, West Perth WA 6005 **Postal:** PO Box 79, West Perth, WA 6872

**T:** +61 8 9381 5558 **E:** [terrain@terrainminerals.com.au](mailto:terrain@terrainminerals.com.au) **W:** [www.terrainminerals.com.au](http://www.terrainminerals.com.au)

|        |         |       |      |     |      |      |      |      |
|--------|---------|-------|------|-----|------|------|------|------|
| 730398 | 7705202 | 6.50  | 1.40 | 277 | 1.20 | 0.17 | 0.04 | 0.43 |
| 730602 | 7705201 | 9.60  | 1.81 | 259 | 1.50 | 0.21 | 0.07 | 0.35 |
| 730807 | 7705198 | 17.40 | 2.47 | 220 | 1.90 | 0.28 | 0.08 | 0.39 |
| 730999 | 7705203 | 10.60 | 2.03 | 242 | 1.70 | 0.22 | 0.07 | 0.34 |
| 731203 | 7705201 | 13.00 | 2.30 | 229 | 2.30 | 0.25 | 0.10 | 0.48 |
| 731399 | 7705199 | 13.30 | 2.43 | 225 | 2.30 | 0.21 | 0.10 | 0.42 |
| 731599 | 7705203 | 12.30 | 2.54 | 238 | 1.50 | 0.19 | 0.10 | 0.45 |
| 731802 | 7705201 | 9.70  | 2.25 | 244 | 1.20 | 0.16 | 0.08 | 0.33 |
| 731997 | 7705198 | 8.80  | 2.36 | 249 | 1.30 | 0.17 | 0.09 | 0.32 |
| 732201 | 7705199 | 11.80 | 2.51 | 238 | 1.50 | 0.17 | 0.10 | 0.38 |
| 732600 | 7705200 | 14.60 | 1.92 | 265 | 1.20 | 0.19 | 0.07 | 0.29 |
| 732802 | 7705200 | 9.90  | 2.31 | 245 | 1.20 | 0.24 | 0.08 | 0.40 |
| 733000 | 7705199 | 10.40 | 2.59 | 230 | 1.10 | 0.20 | 0.08 | 0.28 |
| 733201 | 7705200 | 11.50 | 2.58 | 243 | 1.20 | 0.14 | 0.08 | 0.32 |
| 733401 | 7705200 | 9.10  | 1.82 | 256 | 1.10 | 0.17 | 0.07 | 0.31 |
| 733585 | 7705193 | 9.80  | 1.92 | 244 | 1.90 | 0.26 | 0.08 | 0.54 |
| 733799 | 7705207 | 17.00 | 2.75 | 218 | 3.70 | 0.38 | 0.15 | 0.71 |
| 734006 | 7705200 | 15.20 | 2.69 | 215 | 3.00 | 0.34 | 0.13 | 0.68 |
| 734195 | 7705201 | 12.40 | 2.42 | 234 | 2.70 | 0.34 | 0.11 | 0.59 |
| 734402 | 7705203 | 6.70  | 1.83 | 255 | 1.10 | 0.22 | 0.07 | 0.33 |
| 734604 | 7705204 | 9.00  | 2.10 | 228 | 1.90 | 0.32 | 0.09 | 0.48 |
| 734802 | 7705201 | 7.60  | 1.85 | 233 | 1.70 | 0.30 | 0.08 | 0.41 |
| 735000 | 7705193 | 14.50 | 2.41 | 214 | 2.90 | 0.33 | 0.13 | 0.51 |
| 735206 | 7705201 | 8.10  | 1.96 | 225 | 1.60 | 0.39 | 0.08 | 0.48 |
| 735402 | 7705203 | 17.40 | 2.77 | 197 | 3.40 | 0.44 | 0.14 | 0.56 |
| 735603 | 7705197 | 9.00  | 2.10 | 216 | 2.00 | 0.39 | 0.09 | 0.73 |
| 735806 | 7705200 | 12.30 | 2.51 | 210 | 2.70 | 0.43 | 0.12 | 0.56 |
| 736003 | 7705201 | 14.40 | 2.59 | 206 | 3.00 | 0.42 | 0.14 | 0.59 |
| 736204 | 7705198 | 28.80 | 3.49 | 173 | 5.10 | 0.54 | 0.22 | 0.88 |
| 736402 | 7705200 | 14.30 | 2.81 | 200 | 3.30 | 0.45 | 0.13 | 0.64 |
| 736603 | 7705199 | 11.20 | 2.15 | 223 | 2.10 | 0.36 | 0.10 | 0.51 |
| 736802 | 7705203 | 14.10 | 2.43 | 216 | 2.30 | 0.34 | 0.11 | 0.54 |
| 737403 | 7705204 | 14.10 | 2.55 | 206 | 3.80 | 0.62 | 0.12 | 0.58 |
| 737603 | 7705203 | 10.60 | 2.45 | 212 | 3.40 | 0.67 | 0.10 | 0.63 |
| 737800 | 7705202 | 11.70 | 2.59 | 204 | 3.80 | 0.62 | 0.11 | 0.62 |
| 730194 | 7704999 | 16.70 | 2.67 | 214 | 1.60 | 0.20 | 0.13 | 0.34 |
| 730403 | 7704999 | 11.40 | 2.20 | 237 | 1.40 | 0.19 | 0.09 | 0.31 |
| 730559 | 7705000 | 13.80 | 2.75 | 224 | 1.30 | 0.24 | 0.11 | 0.43 |
| 730802 | 7705000 | 9.50  | 2.13 | 239 | 1.10 | 0.15 | 0.09 | 0.30 |
| 731003 | 7704999 | 11.00 | 2.19 | 245 | 1.20 | 0.16 | 0.09 | 0.29 |
| 731195 | 7704992 | 11.80 | 2.48 | 241 | 1.10 | 0.17 | 0.10 | 0.29 |

**Address:** Suite 2, 28 Outram Street, West Perth WA 6005 **Postal:** PO Box 79, West Perth, WA 6872

**T:** +61 8 9381 5558 **E:** [terrain@terrainminerals.com.au](mailto:terrain@terrainminerals.com.au) **W:** [www.terrainminerals.com.au](http://www.terrainminerals.com.au)

|        |         |       |      |     |      |      |      |      |
|--------|---------|-------|------|-----|------|------|------|------|
| 731403 | 7704995 | 9.60  | 1.98 | 239 | 1.20 | 0.13 | 0.09 | 0.26 |
| 731607 | 7704995 | 12.50 | 2.37 | 235 | 1.60 | 0.19 | 0.11 | 0.36 |
| 731807 | 7705001 | 10.40 | 2.23 | 249 | 1.50 | 0.16 | 0.09 | 0.31 |
| 731961 | 7704999 | 15.00 | 2.72 | 231 | 1.70 | 0.21 | 0.12 | 0.42 |
| 732204 | 7704997 | 15.40 | 2.37 | 244 | 1.80 | 0.23 | 0.09 | 0.41 |
| 732399 | 7705001 | 16.10 | 2.60 | 216 | 3.30 | 0.35 | 0.12 | 0.59 |
| 732603 | 7705001 | 14.30 | 2.42 | 214 | 3.50 | 0.27 | 0.10 | 0.77 |
| 732798 | 7705001 | 20.20 | 2.73 | 215 | 2.90 | 0.33 | 0.13 | 0.72 |
| 733002 | 7705000 | 12.60 | 2.65 | 231 | 1.50 | 0.17 | 0.09 | 0.41 |
| 733202 | 7704993 | 17.60 | 2.31 | 225 | 1.50 | 0.24 | 0.13 | 0.48 |
| 733401 | 7705001 | 8.00  | 1.60 | 274 | 1.20 | 0.16 | 0.06 | 0.31 |
| 733599 | 7704995 | 12.70 | 2.14 | 238 | 1.80 | 0.33 | 0.11 | 0.61 |
| 733802 | 7705001 | 8.50  | 2.23 | 246 | 2.10 | 0.34 | 0.09 | 0.66 |
| 734001 | 7704999 | 9.30  | 2.16 | 252 | 2.20 | 0.32 | 0.09 | 0.52 |
| 734202 | 7704997 | 14.30 | 2.67 | 224 | 3.40 | 0.39 | 0.11 | 0.82 |
| 734394 | 7704985 | 17.30 | 2.11 | 215 | 2.40 | 0.31 | 0.10 | 0.56 |
| 734599 | 7704991 | 21.90 | 2.54 | 225 | 2.70 | 0.36 | 0.11 | 0.65 |
| 734803 | 7704992 | 8.00  | 1.39 | 283 | 1.60 | 0.25 | 0.07 | 0.53 |
| 735001 | 7704994 | 9.40  | 2.01 | 228 | 1.80 | 0.34 | 0.09 | 0.51 |
| 735202 | 7705002 | 9.30  | 1.99 | 233 | 2.00 | 0.40 | 0.10 | 0.54 |
| 735379 | 7705001 | 6.60  | 1.62 | 238 | 1.40 | 0.27 | 0.06 | 0.34 |
| 735599 | 7705003 | 9.00  | 1.97 | 223 | 2.00 | 0.32 | 0.08 | 0.54 |
| 735802 | 7705000 | 9.10  | 2.08 | 225 | 2.00 | 0.35 | 0.09 | 0.54 |
| 735996 | 7704997 | 15.60 | 2.85 | 203 | 3.40 | 0.48 | 0.13 | 0.65 |
| 736198 | 7705000 | 7.80  | 1.94 | 229 | 1.50 | 0.33 | 0.07 | 0.41 |
| 736401 | 7704994 | 11.50 | 2.26 | 222 | 2.40 | 0.38 | 0.11 | 0.61 |
| 736603 | 7704999 | 11.40 | 2.22 | 220 | 2.30 | 0.32 | 0.12 | 0.48 |
| 737202 | 7704997 | 16.90 | 2.29 | 208 | 3.70 | 0.40 | 0.14 | 0.53 |
| 737397 | 7705000 | 11.00 | 2.44 | 211 | 3.50 | 0.62 | 0.11 | 0.56 |
| 737596 | 7705003 | 15.30 | 2.84 | 207 | 4.80 | 0.73 | 0.16 | 0.58 |
| 737802 | 7704997 | 10.90 | 2.43 | 208 | 3.10 | 0.47 | 0.11 | 0.44 |
| 738000 | 7705000 | 15.00 | 2.75 | 208 | 4.10 | 0.60 | 0.13 | 0.59 |
| 738200 | 7705001 | 10.50 | 2.42 | 209 | 4.80 | 0.76 | 0.11 | 0.62 |
| 738601 | 7705001 | 11.40 | 2.49 | 214 | 3.70 | 0.61 | 0.11 | 0.53 |
| 738800 | 7705000 | 10.20 | 2.62 | 214 | 2.90 | 0.54 | 0.11 | 0.51 |
| 739001 | 7705000 | 25.10 | 3.49 | 190 | 6.70 | 0.77 | 0.20 | 0.70 |
| 731199 | 7704793 | 13.60 | 2.47 | 233 | 2.30 | 0.22 | 0.11 | 0.49 |
| 731401 | 7704803 | 12.20 | 2.38 | 250 | 1.60 | 0.18 | 0.10 | 0.39 |
| 731596 | 7704798 | 7.70  | 2.01 | 252 | 0.90 | 0.15 | 0.08 | 0.23 |
| 731808 | 7704782 | 19.00 | 2.44 | 221 | 2.20 | 0.27 | 0.13 | 0.52 |
| 732002 | 7704805 | 16.90 | 2.30 | 233 | 2.60 | 0.35 | 0.12 | 0.55 |

**Address:** Suite 2, 28 Outram Street, West Perth WA 6005 **Postal:** PO Box 79, West Perth, WA 6872

**T:** +61 8 9381 5558 **E:** [terrain@terrainminerals.com.au](mailto:terrain@terrainminerals.com.au) **W:** [www.terrainminerals.com.au](http://www.terrainminerals.com.au)

|        |         |       |      |     |      |      |      |      |
|--------|---------|-------|------|-----|------|------|------|------|
| 732199 | 7704803 | 14.30 | 2.42 | 227 | 2.40 | 0.33 | 0.12 | 0.47 |
| 732399 | 7704800 | 20.80 | 2.84 | 213 | 3.50 | 0.37 | 0.15 | 0.63 |
| 732599 | 7704796 | 13.60 | 2.28 | 233 | 2.10 | 0.25 | 0.10 | 0.40 |
| 732797 | 7704796 | 9.70  | 2.29 | 238 | 1.40 | 0.19 | 0.08 | 0.35 |
| 732997 | 7704796 | 12.70 | 2.65 | 227 | 1.60 | 0.19 | 0.11 | 0.35 |
| 733202 | 7704805 | 9.20  | 2.49 | 240 | 1.10 | 0.18 | 0.09 | 0.35 |
| 733398 | 7704801 | 7.40  | 1.66 | 279 | 1.10 | 0.20 | 0.07 | 0.37 |
| 733597 | 7704799 | 14.90 | 2.35 | 193 | 5.00 | 0.29 | 0.11 | 0.46 |
| 733801 | 7704797 | 19.20 | 2.94 | 225 | 3.80 | 0.42 | 0.15 | 0.58 |
| 734001 | 7704801 | 22.60 | 3.18 | 213 | 4.80 | 0.43 | 0.17 | 0.59 |
| 734209 | 7704806 | 17.20 | 2.79 | 220 | 3.20 | 0.32 | 0.15 | 0.56 |
| 734397 | 7704798 | 15.40 | 2.73 | 216 | 3.30 | 0.36 | 0.15 | 0.64 |
| 734604 | 7704801 | 23.00 | 2.61 | 211 | 2.90 | 0.36 | 0.15 | 0.60 |
| 734799 | 7704802 | 16.40 | 2.45 | 220 | 4.00 | 0.38 | 0.15 | 0.55 |
| 735005 | 7704805 | 9.60  | 2.09 | 232 | 1.80 | 0.29 | 0.09 | 0.38 |
| 735201 | 7704797 | 13.70 | 2.66 | 215 | 2.80 | 0.41 | 0.13 | 0.56 |
| 735405 | 7704799 | 13.40 | 2.42 | 219 | 3.10 | 0.44 | 0.13 | 0.56 |
| 735609 | 7704802 | 9.90  | 2.12 | 223 | 2.40 | 0.39 | 0.11 | 0.41 |
| 735802 | 7704798 | 9.00  | 2.12 | 222 | 2.00 | 0.34 | 0.10 | 0.49 |
| 736003 | 7704804 | 10.90 | 2.23 | 218 | 2.30 | 0.34 | 0.11 | 0.47 |
| 736200 | 7704803 | 25.20 | 3.38 | 179 | 4.80 | 0.50 | 0.20 | 0.79 |
| 736401 | 7704804 | 12.60 | 2.51 | 210 | 2.50 | 0.34 | 0.11 | 0.46 |
| 736595 | 7704793 | 13.80 | 2.37 | 219 | 2.10 | 0.32 | 0.11 | 0.40 |
| 737001 | 7704794 | 17.80 | 3.02 | 206 | 4.00 | 0.45 | 0.19 | 0.76 |
| 737200 | 7704802 | 33.00 | 3.63 | 175 | 7.50 | 0.62 | 0.25 | 0.88 |
| 737399 | 7704798 | 13.40 | 2.65 | 219 | 3.50 | 0.61 | 0.12 | 0.51 |
| 737599 | 7704802 | 12.80 | 2.64 | 221 | 4.10 | 0.75 | 0.12 | 0.64 |
| 737798 | 7704796 | 12.10 | 2.62 | 217 | 4.00 | 0.75 | 0.12 | 0.55 |
| 737997 | 7704798 | 10.80 | 2.58 | 210 | 4.00 | 0.75 | 0.10 | 0.62 |
| 738153 | 7704802 | 12.10 | 2.55 | 223 | 4.70 | 0.90 | 0.11 | 0.57 |
| 738407 | 7704793 | 12.60 | 2.73 | 210 | 5.10 | 0.93 | 0.12 | 0.50 |
| 738601 | 7704801 | 25.80 | 3.53 | 196 | 7.10 | 0.81 | 0.21 | 0.75 |
| 738801 | 7704800 | 35.20 | 4.17 | 172 | 9.00 | 0.97 | 0.26 | 0.87 |
| 739000 | 7704803 | 25.50 | 3.74 | 193 | 6.40 | 0.79 | 0.19 | 0.77 |
| 739200 | 7704801 | 16.20 | 3.66 | 196 | 3.40 | 0.52 | 0.16 | 0.48 |
| 739397 | 7704804 | 21.00 | 4.25 | 187 | 4.90 | 0.59 | 0.17 | 0.71 |
| 739591 | 7704800 | 22.30 | 4.44 | 192 | 5.10 | 0.54 | 0.15 | 0.77 |
| 739798 | 7704803 | 18.50 | 4.25 | 186 | 4.30 | 0.47 | 0.16 | 0.71 |
| 739998 | 7704803 | 20.10 | 4.50 | 183 | 4.20 | 0.45 | 0.16 | 0.69 |
| 740195 | 7704781 | 15.70 | 4.30 | 189 | 3.20 | 0.39 | 0.14 | 0.70 |
| 732204 | 7704602 | 19.40 | 2.98 | 213 | 4.30 | 0.34 | 0.17 | 0.72 |

**Address:** Suite 2, 28 Outram Street, West Perth WA 6005 **Postal:** PO Box 79, West Perth, WA 6872

**T:** +61 8 9381 5558 **E:** [terrain@terrainminerals.com.au](mailto:terrain@terrainminerals.com.au) **W:** [www.terrainminerals.com.au](http://www.terrainminerals.com.au)

|        |         |       |      |     |       |      |      |      |
|--------|---------|-------|------|-----|-------|------|------|------|
| 732398 | 7704598 | 16.50 | 2.86 | 218 | 2.90  | 0.36 | 0.14 | 0.53 |
| 732604 | 7704597 | 16.10 | 2.53 | 215 | 3.00  | 0.33 | 0.12 | 0.54 |
| 732807 | 7704599 | 10.80 | 2.31 | 236 | 1.40  | 0.16 | 0.08 | 0.27 |
| 732992 | 7704593 | 12.70 | 2.63 | 231 | 1.40  | 0.17 | 0.10 | 0.31 |
| 733202 | 7704601 | 10.80 | 2.57 | 241 | 1.30  | 0.19 | 0.09 | 0.29 |
| 733402 | 7704601 | 12.70 | 1.92 | 265 | 2.00  | 0.24 | 0.09 | 0.41 |
| 733604 | 7704601 | 11.60 | 2.33 | 237 | 2.50  | 0.32 | 0.11 | 0.47 |
| 733800 | 7704602 | 10.50 | 2.36 | 240 | 2.20  | 0.32 | 0.10 | 0.45 |
| 734005 | 7704599 | 15.60 | 2.91 | 225 | 2.90  | 0.35 | 0.18 | 0.48 |
| 734205 | 7704600 | 11.60 | 2.55 | 233 | 2.50  | 0.41 | 0.11 | 0.64 |
| 734397 | 7704594 | 22.50 | 3.01 | 212 | 3.80  | 0.39 | 0.16 | 0.62 |
| 734602 | 7704598 | 17.20 | 2.52 | 202 | 3.80  | 0.36 | 0.12 | 0.64 |
| 734812 | 7704606 | 14.00 | 2.41 | 221 | 2.80  | 0.37 | 0.12 | 0.51 |
| 735001 | 7704606 | 9.00  | 1.98 | 235 | 1.90  | 0.33 | 0.09 | 0.38 |
| 735205 | 7704601 | 12.20 | 2.41 | 227 | 2.10  | 0.34 | 0.11 | 0.52 |
| 735401 | 7704601 | 8.20  | 2.06 | 230 | 1.90  | 0.35 | 0.09 | 0.36 |
| 735600 | 7704594 | 8.70  | 1.94 | 229 | 2.20  | 0.38 | 0.10 | 0.57 |
| 735804 | 7704605 | 24.10 | 3.35 | 185 | 4.20  | 0.50 | 0.20 | 0.77 |
| 736006 | 7704599 | 10.40 | 2.30 | 215 | 2.30  | 0.63 | 0.11 | 0.53 |
| 736202 | 7704599 | 23.50 | 3.31 | 187 | 4.70  | 0.48 | 0.19 | 0.78 |
| 736405 | 7704600 | 15.80 | 2.88 | 211 | 2.40  | 0.36 | 0.13 | 0.49 |
| 736841 | 7704600 | 16.00 | 3.23 | 199 | 3.80  | 0.44 | 0.35 | 1.12 |
| 737002 | 7704599 | 9.70  | 2.46 | 228 | 2.40  | 0.38 | 0.15 | 0.65 |
| 737203 | 7704602 | 19.90 | 3.31 | 193 | 4.70  | 0.52 | 0.17 | 0.82 |
| 737398 | 7704598 | 12.40 | 2.47 | 209 | 2.90  | 0.45 | 0.11 | 0.53 |
| 737606 | 7704600 | 12.30 | 2.54 | 218 | 4.10  | 0.75 | 0.10 | 0.62 |
| 737794 | 7704606 | 13.20 | 2.66 | 211 | 4.20  | 0.71 | 0.12 | 0.64 |
| 738004 | 7704599 | 14.00 | 2.83 | 208 | 4.80  | 0.92 | 0.13 | 0.63 |
| 738401 | 7704597 | 18.90 | 2.89 | 203 | 12.90 | 1.00 | 0.15 | 0.74 |
| 738598 | 7704602 | 13.50 | 2.89 | 210 | 3.90  | 0.62 | 0.13 | 0.65 |
| 738800 | 7704603 | 18.70 | 3.24 | 194 | 5.10  | 0.75 | 0.16 | 0.69 |
| 738949 | 7704583 | 11.20 | 2.81 | 211 | 3.00  | 0.72 | 0.11 | 0.75 |
| 739200 | 7704600 | 13.90 | 3.60 | 196 | 3.60  | 0.49 | 0.12 | 0.63 |
| 739401 | 7704600 | 14.00 | 3.97 | 194 | 3.60  | 0.46 | 0.14 | 0.59 |
| 739599 | 7704602 | 19.10 | 4.37 | 188 | 4.70  | 0.49 | 0.15 | 0.71 |
| 739802 | 7704604 | 18.00 | 4.30 | 182 | 4.10  | 0.47 | 0.15 | 0.58 |
| 740000 | 7704598 | 19.70 | 4.53 | 184 | 4.20  | 0.50 | 0.16 | 0.64 |
| 740198 | 7704598 | 17.90 | 4.44 | 192 | 3.60  | 0.43 | 0.16 | 0.74 |
| 740400 | 7704601 | 18.90 | 4.53 | 181 | 3.80  | 0.41 | 0.17 | 0.65 |
| 740597 | 7704600 | 18.80 | 4.43 | 183 | 3.60  | 0.41 | 0.16 | 0.57 |
| 740802 | 7704602 | 16.40 | 4.46 | 181 | 3.10  | 0.38 | 0.15 | 0.59 |

**Address:** Suite 2, 28 Outram Street, West Perth WA 6005 **Postal:** PO Box 79, West Perth, WA 6872

**T:** +61 8 9381 5558 **E:** [terrain@terrainminerals.com.au](mailto:terrain@terrainminerals.com.au) **W:** [www.terrainminerals.com.au](http://www.terrainminerals.com.au)

|               |                |              |             |            |             |             |             |             |
|---------------|----------------|--------------|-------------|------------|-------------|-------------|-------------|-------------|
| 741004        | 7704598        | 23.00        | 4.87        | 179        | 3.80        | 0.51        | 0.20        | 0.68        |
| 733201        | 7704400        | 8.00         | 2.10        | 253        | 1.20        | 0.19        | 0.08        | 0.35        |
| 733403        | 7704401        | 9.20         | 1.69        | 265        | 1.80        | 0.23        | 0.07        | 0.32        |
| 733599        | 7704399        | 14.40        | 2.40        | 224        | 2.60        | 0.34        | 0.11        | 0.47        |
| 733794        | 7704403        | 15.70        | 2.92        | 209        | 3.40        | 0.40        | 0.16        | 0.79        |
| 734000        | 7704400        | 12.00        | 2.48        | 225        | 2.50        | 0.37        | 0.13        | 0.66        |
| 734198        | 7704400        | 20.30        | 3.12        | 199        | 3.90        | 0.46        | 0.17        | 0.76        |
| 734400        | 7704401        | 7.00         | 1.87        | 247        | 1.60        | 0.31        | 0.08        | 0.46        |
| 734603        | 7704401        | 15.90        | 2.58        | 217        | 4.10        | 0.39        | 0.15        | 0.73        |
| 734800        | 7704396        | 20.60        | 2.87        | 202        | 7.50        | 0.46        | 0.18        | 0.82        |
| 734998        | 7704404        | 22.30        | 3.05        | 197        | 4.00        | 0.43        | 0.17        | 0.82        |
| 735201        | 7704401        | 9.90         | 2.11        | 218        | 2.10        | 0.37        | 0.10        | 0.50        |
| 735397        | 7704399        | 9.90         | 2.18        | 232        | 2.30        | 0.39        | 0.10        | 0.43        |
| 735597        | 7704399        | 11.10        | 2.14        | 226        | 2.40        | 0.38        | 0.10        | 0.47        |
| 735797        | 7704404        | 11.00        | 2.32        | 220        | 2.50        | 0.42        | 0.10        | 0.58        |
| 736004        | 7704401        | 24.70        | 3.02        | 192        | 4.70        | 0.50        | 0.19        | 0.73        |
| 736202        | 7704403        | 12.60        | 2.50        | 219        | 2.10        | 0.30        | 0.12        | 0.45        |
| 736400        | 7704396        | 15.50        | 2.42        | 223        | 2.60        | 0.36        | 0.13        | 0.57        |
| 736597        | 7704401        | 16.20        | 2.50        | 213        | 2.70        | 0.35        | 0.13        | 0.48        |
| <b>736831</b> | <b>7704428</b> | <b>26.70</b> | <b>3.11</b> | <b>224</b> | <b>4.60</b> | <b>0.44</b> | <b>9.91</b> | <b>6.74</b> |
| 737001        | 7704405        | 12.90        | 2.60        | 217        | 3.20        | 0.42        | 0.15        | 0.65        |
| 737206        | 7704408        | 26.70        | 3.30        | 201        | 5.20        | 0.53        | 0.23        | 0.92        |
| 737405        | 7704403        | 25.40        | 3.33        | 193        | 6.00        | 0.64        | 0.30        | 0.82        |
| 737601        | 7704403        | 8.70         | 2.31        | 218        | 3.00        | 0.75        | 0.10        | 0.61        |
| 737803        | 7704398        | 13.50        | 2.62        | 214        | 4.80        | 0.81        | 0.12        | 0.58        |
| 738006        | 7704396        | 11.90        | 2.40        | 220        | 5.30        | 0.95        | 0.13        | 0.81        |
| 738400        | 7704396        | 25.90        | 3.26        | 189        | 7.50        | 0.86        | 0.20        | 0.84        |
| 738600        | 7704401        | 13.10        | 2.85        | 209        | 3.70        | 0.58        | 0.13        | 0.59        |
| 738798        | 7704401        | 10.00        | 2.64        | 227        | 3.00        | 0.48        | 0.10        | 0.50        |
| 739000        | 7704401        | 8.90         | 2.54        | 210        | 2.40        | 0.50        | 0.09        | 0.50        |
| 739204        | 7704407        | 17.30        | 3.76        | 200        | 4.00        | 0.55        | 0.14        | 0.59        |
| 739402        | 7704399        | 14.40        | 3.80        | 203        | 3.30        | 0.45        | 0.13        | 0.53        |
| 739602        | 7704403        | 23.10        | 4.48        | 190        | 5.40        | 0.54        | 0.18        | 0.70        |
| 739805        | 7704398        | 16.50        | 4.24        | 195        | 3.60        | 0.48        | 0.15        | 0.54        |
| 739998        | 7704404        | 15.30        | 4.17        | 196        | 3.30        | 0.44        | 0.13        | 0.56        |
| 740200        | 7704402        | 22.40        | 4.59        | 186        | 4.50        | 0.51        | 0.18        | 0.57        |
| 740402        | 7704399        | 19.00        | 4.37        | 189        | 3.50        | 0.45        | 0.15        | 0.57        |
| 740601        | 7704403        | 22.70        | 4.56        | 189        | 4.00        | 0.44        | 0.17        | 0.63        |
| 740802        | 7704402        | 19.30        | 4.53        | 189        | 3.60        | 0.45        | 0.17        | 0.66        |
| 740999        | 7704402        | 18.50        | 4.58        | 188        | 3.40        | 0.41        | 0.14        | 0.61        |
| 741200        | 7704399        | 23.80        | 4.82        | 184        | 4.20        | 0.46        | 0.18        | 0.51        |

**Address:** Suite 2, 28 Outram Street, West Perth WA 6005 **Postal:** PO Box 79, West Perth, WA 6872

**T:** +61 8 9381 5558 **E:** [terrain@terrainminerals.com.au](mailto:terrain@terrainminerals.com.au) **W:** [www.terrainminerals.com.au](http://www.terrainminerals.com.au)

|        |         |       |      |     |      |      |      |      |
|--------|---------|-------|------|-----|------|------|------|------|
| 734197 | 7704202 | 20.30 | 2.68 | 210 | 4.10 | 0.39 | 0.16 | 0.71 |
| 734403 | 7704199 | 28.30 | 3.27 | 188 | 6.10 | 0.46 | 0.21 | 0.74 |
| 734595 | 7704204 | 17.10 | 2.75 | 220 | 3.90 | 0.43 | 0.16 | 0.69 |
| 734801 | 7704202 | 17.00 | 2.71 | 214 | 3.60 | 0.45 | 0.15 | 0.57 |
| 734998 | 7704197 | 17.90 | 2.69 | 210 | 4.30 | 0.43 | 0.15 | 0.64 |
| 735206 | 7704204 | 24.60 | 3.04 | 195 | 4.90 | 0.50 | 0.19 | 0.70 |
| 735401 | 7704202 | 13.30 | 2.42 | 219 | 2.50 | 0.38 | 0.13 | 0.48 |
| 735599 | 7704197 | 11.80 | 2.22 | 232 | 2.60 | 0.38 | 0.12 | 0.55 |
| 735796 | 7704201 | 11.60 | 2.23 | 224 | 2.70 | 0.40 | 0.13 | 0.54 |
| 735999 | 7704200 | 14.20 | 2.43 | 217 | 3.10 | 0.40 | 0.13 | 0.62 |
| 736203 | 7704207 | 13.70 | 2.60 | 222 | 2.20 | 0.32 | 0.12 | 0.48 |
| 736407 | 7704198 | 13.20 | 2.40 | 219 | 2.10 | 0.27 | 0.11 | 0.44 |
| 736583 | 7704201 | 12.20 | 2.25 | 226 | 2.00 | 0.28 | 0.09 | 0.46 |
| 736843 | 7704190 | 8.80  | 1.89 | 243 | 1.80 | 0.31 | 0.07 | 0.38 |
| 737001 | 7704202 | 22.10 | 2.98 | 200 | 4.60 | 0.49 | 0.19 | 0.71 |
| 737203 | 7704200 | 18.30 | 2.88 | 200 | 4.70 | 0.46 | 0.18 | 0.79 |
| 737399 | 7704193 | 13.30 | 2.34 | 220 | 3.20 | 0.49 | 0.11 | 0.55 |
| 737602 | 7704202 | 11.80 | 2.55 | 221 | 4.30 | 0.68 | 0.10 | 0.68 |
| 737797 | 7704198 | 12.00 | 2.46 | 223 | 4.70 | 0.89 | 0.11 | 0.64 |
| 737968 | 7704206 | 12.40 | 2.48 | 220 | 5.20 | 0.95 | 0.12 | 0.76 |
| 738275 | 7704192 | 6.50  | 1.97 | 219 | 2.70 | 0.53 | 0.07 | 0.47 |
| 738405 | 7704199 | 10.50 | 2.58 | 212 | 3.00 | 0.58 | 0.09 | 0.71 |
| 738598 | 7704205 | 11.00 | 2.65 | 208 | 3.00 | 0.57 | 0.10 | 0.63 |
| 738802 | 7704200 | 16.90 | 3.09 | 202 | 4.10 | 0.61 | 0.14 | 0.58 |
| 739004 | 7704200 | 18.20 | 3.38 | 201 | 4.50 | 0.67 | 0.15 | 0.76 |
| 739204 | 7704202 | 12.70 | 3.69 | 200 | 3.00 | 0.46 | 0.10 | 0.49 |
| 739402 | 7704202 | 28.90 | 4.62 | 182 | 6.00 | 0.61 | 0.20 | 0.86 |
| 739600 | 7704200 | 23.20 | 4.65 | 186 | 5.20 | 0.60 | 0.18 | 0.78 |
| 739802 | 7704198 | 18.20 | 4.32 | 192 | 3.80 | 0.50 | 0.14 | 0.66 |
| 739999 | 7704202 | 20.10 | 4.52 | 184 | 4.50 | 0.52 | 0.16 | 0.68 |
| 740202 | 7704198 | 20.90 | 4.69 | 183 | 4.00 | 0.51 | 0.17 | 0.72 |
| 740398 | 7704198 | 21.80 | 4.95 | 188 | 3.70 | 0.48 | 0.17 | 0.75 |
| 740606 | 7704201 | 16.70 | 4.66 | 192 | 3.10 | 0.42 | 0.14 | 0.61 |
| 740803 | 7704204 | 20.30 | 4.68 | 184 | 3.50 | 0.44 | 0.16 | 0.67 |
| 741001 | 7704201 | 24.20 | 4.95 | 181 | 4.10 | 0.48 | 0.18 | 0.66 |
| 741201 | 7704199 | 21.70 | 4.77 | 184 | 3.60 | 0.42 | 0.18 | 0.73 |
| 735002 | 7703999 | 27.70 | 3.63 | 185 | 6.20 | 0.53 | 0.21 | 0.98 |
| 735202 | 7704000 | 22.00 | 3.25 | 199 | 3.90 | 0.53 | 0.19 | 0.78 |
| 735397 | 7704000 | 13.20 | 2.44 | 222 | 3.00 | 0.49 | 0.12 | 0.54 |
| 735605 | 7703999 | 15.90 | 2.62 | 215 | 2.60 | 0.45 | 0.12 | 0.64 |
| 735800 | 7704005 | 17.10 | 2.51 | 209 | 3.40 | 0.45 | 0.14 | 0.65 |

**Address:** Suite 2, 28 Outram Street, West Perth WA 6005 **Postal:** PO Box 79, West Perth, WA 6872

**T:** +61 8 9381 5558 **E:** [terrain@terrainminerals.com.au](mailto:terrain@terrainminerals.com.au) **W:** [www.terrainminerals.com.au](http://www.terrainminerals.com.au)

|        |         |       |      |     |      |      |      |      |
|--------|---------|-------|------|-----|------|------|------|------|
| 736002 | 7704005 | 21.70 | 2.97 | 203 | 3.80 | 0.45 | 0.16 | 0.72 |
| 736199 | 7703998 | 15.00 | 2.56 | 220 | 2.20 | 0.32 | 0.11 | 0.47 |
| 736405 | 7703999 | 18.60 | 3.00 | 210 | 2.60 | 0.38 | 0.13 | 0.57 |
| 736803 | 7704004 | 9.30  | 2.05 | 239 | 1.80 | 0.39 | 0.08 | 0.44 |
| 736998 | 7704002 | 24.10 | 3.13 | 196 | 4.80 | 0.50 | 0.17 | 0.74 |
| 737199 | 7704001 | 11.40 | 2.50 | 219 | 2.40 | 0.40 | 0.09 | 0.65 |
| 737404 | 7704003 | 13.40 | 2.61 | 211 | 3.30 | 0.50 | 0.12 | 0.56 |
| 737600 | 7703999 | 11.70 | 2.60 | 220 | 3.60 | 0.81 | 0.11 | 0.63 |
| 737793 | 7704000 | 14.20 | 2.72 | 209 | 5.40 | 1.00 | 0.12 | 0.76 |
| 738205 | 7704004 | 9.40  | 2.41 | 218 | 2.90 | 0.59 | 0.09 | 0.47 |
| 738407 | 7704002 | 23.50 | 3.55 | 191 | 6.10 | 0.82 | 0.16 | 0.76 |
| 738601 | 7704004 | 21.90 | 3.41 | 189 | 5.90 | 0.82 | 0.17 | 0.80 |
| 738800 | 7704002 | 16.40 | 3.26 | 202 | 4.50 | 0.66 | 0.13 | 0.83 |
| 739004 | 7704005 | 18.00 | 3.37 | 201 | 4.50 | 0.69 | 0.13 | 0.79 |
| 739203 | 7703999 | 14.00 | 3.31 | 207 | 4.00 | 0.65 | 0.13 | 0.70 |
| 739400 | 7703999 | 16.50 | 4.24 | 195 | 3.40 | 0.45 | 0.13 | 0.70 |
| 739603 | 7704000 | 20.30 | 4.38 | 188 | 4.40 | 0.53 | 0.16 | 0.65 |
| 739799 | 7704003 | 23.20 | 4.61 | 186 | 4.60 | 0.54 | 0.18 | 0.70 |
| 740000 | 7704004 | 21.70 | 4.74 | 183 | 4.30 | 0.50 | 0.16 | 0.75 |
| 740202 | 7704003 | 30.30 | 5.16 | 179 | 5.20 | 0.53 | 0.22 | 0.95 |
| 740400 | 7704004 | 21.70 | 4.79 | 187 | 3.90 | 0.43 | 0.18 | 0.66 |
| 740603 | 7704001 | 18.20 | 4.83 | 188 | 3.30 | 0.43 | 0.15 | 0.66 |
| 740803 | 7704005 | 21.60 | 4.70 | 185 | 3.70 | 0.44 | 0.17 | 0.63 |
| 741002 | 7704003 | 25.50 | 5.06 | 181 | 4.10 | 0.49 | 0.20 | 0.67 |
| 741200 | 7704003 | 19.70 | 4.73 | 187 | 3.10 | 0.40 | 0.15 | 0.55 |
| 735399 | 7703802 | 15.90 | 2.66 | 216 | 3.10 | 0.44 | 0.15 | 0.66 |
| 735598 | 7703798 | 21.40 | 3.23 | 200 | 3.90 | 0.49 | 0.17 | 0.83 |
| 735801 | 7703801 | 10.40 | 2.16 | 228 | 2.30 | 0.36 | 0.09 | 0.47 |
| 736004 | 7703802 | 17.40 | 2.49 | 218 | 3.30 | 0.41 | 0.13 | 0.60 |
| 736165 | 7703805 | 14.30 | 2.48 | 227 | 2.20 | 0.30 | 0.11 | 0.45 |
| 736398 | 7703802 | 14.40 | 2.48 | 222 | 2.20 | 0.34 | 0.11 | 0.42 |
| 736707 | 7703803 | 11.20 | 2.19 | 232 | 2.30 | 0.36 | 0.10 | 0.53 |
| 736799 | 7703802 | 18.90 | 2.61 | 212 | 3.80 | 0.49 | 0.14 | 0.65 |
| 736999 | 7703802 | 25.60 | 3.23 | 195 | 4.90 | 0.56 | 0.17 | 0.83 |
| 737197 | 7703800 | 20.00 | 3.02 | 203 | 4.10 | 0.52 | 0.15 | 0.73 |
| 737394 | 7703796 | 9.40  | 2.50 | 226 | 2.30 | 0.44 | 0.09 | 0.53 |
| 737594 | 7703798 | 14.40 | 2.79 | 208 | 5.00 | 0.97 | 0.12 | 0.61 |
| 737717 | 7703790 | 11.50 | 2.46 | 211 | 4.80 | 0.89 | 0.10 | 0.60 |
| 738098 | 7703813 | 27.10 | 3.52 | 198 | 7.10 | 0.78 | 0.19 | 0.66 |
| 738206 | 7703797 | 9.00  | 2.43 | 215 | 2.80 | 0.48 | 0.10 | 0.50 |
| 738403 | 7703799 | 12.70 | 2.97 | 208 | 4.10 | 0.64 | 0.11 | 0.60 |

**Address:** Suite 2, 28 Outram Street, West Perth WA 6005 **Postal:** PO Box 79, West Perth, WA 6872

**T:** +61 8 9381 5558 **E:** [terrain@terrainminerals.com.au](mailto:terrain@terrainminerals.com.au) **W:** [www.terrainminerals.com.au](http://www.terrainminerals.com.au)

|        |         |       |      |     |      |      |      |      |
|--------|---------|-------|------|-----|------|------|------|------|
| 738600 | 7703801 | 20.30 | 3.31 | 192 | 5.80 | 0.75 | 0.18 | 0.69 |
| 738799 | 7703800 | 13.50 | 2.97 | 206 | 3.90 | 0.61 | 0.14 | 0.68 |
| 739000 | 7703800 | 12.80 | 3.09 | 205 | 3.70 | 0.60 | 0.12 | 0.76 |
| 739136 | 7703807 | 21.90 | 3.61 | 193 | 5.70 | 0.73 | 0.18 | 0.81 |
| 739401 | 7703804 | 23.40 | 4.43 | 189 | 4.80 | 0.53 | 0.18 | 0.76 |
| 739601 | 7703802 | 23.20 | 4.49 | 180 | 5.00 | 0.56 | 0.18 | 0.77 |
| 739797 | 7703799 | 20.50 | 4.53 | 185 | 4.90 | 0.53 | 0.17 | 0.78 |
| 739997 | 7703801 | 15.90 | 4.31 | 191 | 3.20 | 0.45 | 0.14 | 0.58 |
| 740198 | 7703797 | 21.80 | 4.81 | 190 | 4.30 | 0.47 | 0.16 | 0.63 |
| 740398 | 7703802 | 32.20 | 5.16 | 176 | 5.60 | 0.56 | 0.25 | 0.79 |
| 740603 | 7703799 | 20.20 | 4.89 | 185 | 3.70 | 0.42 | 0.19 | 0.50 |
| 740800 | 7703803 | 19.90 | 4.95 | 183 | 3.50 | 0.45 | 0.17 | 0.58 |
| 740999 | 7703799 | 23.80 | 5.03 | 183 | 4.10 | 0.44 | 0.18 | 0.69 |
| 741198 | 7703802 | 22.40 | 4.91 | 182 | 3.70 | 0.45 | 0.18 | 0.62 |
| 736005 | 7703603 | 11.70 | 2.19 | 231 | 2.50 | 0.36 | 0.11 | 0.55 |
| 736145 | 7703600 | 23.10 | 3.35 | 201 | 3.00 | 0.38 | 0.16 | 0.62 |
| 736627 | 7703601 | 11.60 | 2.13 | 234 | 2.50 | 0.41 | 0.14 | 0.62 |
| 736800 | 7703601 | 21.10 | 3.01 | 201 | 4.10 | 0.52 | 0.15 | 0.66 |
| 737002 | 7703600 | 19.70 | 3.21 | 206 | 4.10 | 0.47 | 0.16 | 0.65 |
| 737204 | 7703602 | 15.30 | 2.96 | 210 | 3.30 | 0.48 | 0.13 | 0.63 |
| 737400 | 7703601 | 12.60 | 2.51 | 218 | 3.50 | 0.53 | 0.14 | 0.50 |
| 737606 | 7703597 | 11.70 | 2.51 | 214 | 5.00 | 0.88 | 0.11 | 0.71 |
| 738007 | 7703600 | 10.00 | 2.41 | 213 | 3.80 | 0.72 | 0.11 | 0.63 |
| 738199 | 7703601 | 21.70 | 3.48 | 196 | 6.10 | 0.76 | 0.19 | 0.75 |
| 738400 | 7703602 | 19.10 | 3.41 | 196 | 5.70 | 0.77 | 0.18 | 0.82 |
| 738597 | 7703601 | 12.40 | 2.94 | 209 | 3.60 | 0.62 | 0.12 | 0.68 |
| 738800 | 7703599 | 14.00 | 3.06 | 208 | 4.10 | 0.61 | 0.14 | 0.67 |
| 738998 | 7703600 | 18.00 | 3.37 | 196 | 5.00 | 0.71 | 0.17 | 0.77 |
| 739202 | 7703601 | 12.20 | 3.15 | 207 | 3.60 | 0.60 | 0.12 | 0.55 |
| 739399 | 7703602 | 26.40 | 4.42 | 182 | 5.40 | 0.57 | 0.19 | 0.74 |
| 739604 | 7703598 | 27.90 | 4.60 | 177 | 6.10 | 0.64 | 0.21 | 0.81 |
| 739803 | 7703601 | 19.90 | 4.49 | 187 | 4.40 | 0.52 | 0.16 | 0.63 |
| 739999 | 7703593 | 18.10 | 4.47 | 187 | 4.20 | 0.49 | 0.16 | 0.53 |
| 740199 | 7703600 | 20.70 | 4.55 | 186 | 4.40 | 0.54 | 0.17 | 0.65 |
| 740398 | 7703603 | 16.20 | 4.41 | 186 | 3.50 | 0.43 | 0.14 | 0.57 |
| 740600 | 7703599 | 19.40 | 4.66 | 185 | 3.70 | 0.46 | 0.17 | 0.70 |
| 740802 | 7703598 | 20.70 | 4.78 | 185 | 3.80 | 0.47 | 0.17 | 0.71 |
| 741000 | 7703601 | 20.30 | 4.74 | 181 | 3.60 | 0.46 | 0.16 | 0.62 |
| 741201 | 7703603 | 23.00 | 4.68 | 185 | 4.00 | 0.46 | 0.19 | 0.60 |
| 736602 | 7703400 | 12.90 | 2.09 | 230 | 2.90 | 0.46 | 0.11 | 0.51 |
| 736801 | 7703400 | 19.60 | 3.06 | 207 | 4.20 | 0.46 | 0.17 | 0.77 |

**Address:** Suite 2, 28 Outram Street, West Perth WA 6005 **Postal:** PO Box 79, West Perth, WA 6872

**T:** +61 8 9381 5558 **E:** [terrain@terrainminerals.com.au](mailto:terrain@terrainminerals.com.au) **W:** [www.terrainminerals.com.au](http://www.terrainminerals.com.au)

|        |         |       |      |     |      |      |      |      |
|--------|---------|-------|------|-----|------|------|------|------|
| 736997 | 7703405 | 21.60 | 3.37 | 195 | 5.00 | 0.54 | 0.19 | 0.70 |
| 737201 | 7703400 | 25.70 | 3.47 | 184 | 5.10 | 0.59 | 0.20 | 0.83 |
| 737401 | 7703399 | 18.70 | 3.04 | 209 | 4.10 | 0.55 | 0.14 | 0.67 |
| 737542 | 7703401 | 10.10 | 2.23 | 216 | 4.50 | 0.91 | 0.10 | 0.70 |
| 737799 | 7703397 | 11.90 | 2.69 | 215 | 4.90 | 0.93 | 0.12 | 0.65 |
| 737998 | 7703398 | 14.20 | 2.63 | 206 | 4.20 | 0.60 | 0.12 | 0.63 |
| 738197 | 7703403 | 12.60 | 2.76 | 204 | 3.80 | 0.60 | 0.13 | 0.76 |
| 738399 | 7703401 | 10.90 | 2.74 | 208 | 3.40 | 0.58 | 0.11 | 0.60 |
| 738597 | 7703401 | 12.90 | 2.97 | 204 | 3.90 | 0.69 | 0.13 | 0.77 |
| 738798 | 7703394 | 13.60 | 3.16 | 209 | 4.60 | 0.68 | 0.13 | 0.64 |
| 738998 | 7703396 | 19.00 | 3.43 | 199 | 5.60 | 0.75 | 0.15 | 0.70 |
| 739187 | 7703387 | 16.20 | 3.06 | 201 | 4.30 | 0.70 | 0.13 | 0.59 |
| 739401 | 7703405 | 19.70 | 4.26 | 192 | 4.70 | 0.55 | 0.17 | 0.75 |
| 739601 | 7703399 | 22.60 | 4.59 | 187 | 4.90 | 0.55 | 0.17 | 0.67 |
| 739798 | 7703403 | 19.90 | 4.55 | 189 | 4.40 | 0.54 | 0.17 | 0.70 |
| 739998 | 7703395 | 19.00 | 4.78 | 189 | 4.70 | 1.06 | 0.16 | 0.71 |
| 740192 | 7703397 | 17.30 | 4.46 | 189 | 3.80 | 0.55 | 0.15 | 0.69 |
| 740401 | 7703400 | 22.60 | 4.85 | 183 | 4.60 | 0.58 | 0.17 | 0.77 |
| 740601 | 7703400 | 21.90 | 4.82 | 184 | 4.20 | 0.63 | 0.17 | 0.78 |
| 740797 | 7703397 | 21.30 | 4.91 | 183 | 4.10 | 0.52 | 0.19 | 0.67 |
| 740996 | 7703400 | 19.70 | 4.91 | 188 | 3.70 | 0.54 | 0.16 | 0.71 |
| 741199 | 7703396 | 19.80 | 4.75 | 184 | 3.70 | 0.49 | 0.16 | 0.62 |
| 737582 | 7703199 | 10.30 | 2.33 | 215 | 4.20 | 0.97 | 0.10 | 0.64 |
| 737800 | 7703204 | 11.90 | 2.65 | 210 | 5.00 | 0.93 | 0.12 | 0.63 |
| 738007 | 7703202 | 18.00 | 3.16 | 200 | 4.60 | 0.63 | 0.15 | 0.54 |
| 738204 | 7703197 | 17.50 | 3.14 | 198 | 5.50 | 0.73 | 0.16 | 0.80 |
| 738401 | 7703203 | 17.50 | 3.45 | 194 | 5.80 | 0.98 | 0.17 | 0.86 |
| 738593 | 7703196 | 19.70 | 3.32 | 194 | 5.80 | 0.81 | 0.17 | 0.82 |
| 738800 | 7703203 | 17.40 | 3.30 | 203 | 5.40 | 0.79 | 0.16 | 0.74 |
| 739001 | 7703200 | 17.50 | 3.41 | 194 | 5.30 | 0.77 | 0.14 | 0.93 |
| 739206 | 7703195 | 9.00  | 2.73 | 214 | 2.80 | 0.58 | 0.08 | 0.55 |
| 739398 | 7703200 | 17.60 | 4.12 | 187 | 4.00 | 0.56 | 0.14 | 0.54 |
| 739603 | 7703198 | 23.60 | 4.58 | 183 | 4.90 | 0.55 | 0.18 | 0.70 |
| 739804 | 7703201 | 24.50 | 4.90 | 184 | 5.30 | 0.56 | 0.17 | 0.77 |
| 740006 | 7703204 | 14.40 | 4.21 | 193 | 3.50 | 0.48 | 0.14 | 0.73 |
| 740206 | 7703203 | 16.20 | 4.59 | 190 | 3.70 | 0.49 | 0.15 | 0.58 |
| 740401 | 7703200 | 18.60 | 4.64 | 185 | 3.80 | 0.54 | 0.16 | 0.69 |
| 740601 | 7703205 | 17.60 | 4.66 | 188 | 3.60 | 0.50 | 0.16 | 0.67 |
| 740804 | 7703202 | 21.40 | 4.92 | 187 | 3.90 | 0.52 | 0.18 | 0.68 |
| 741002 | 7703204 | 22.90 | 4.94 | 185 | 4.20 | 0.52 | 0.19 | 0.77 |
| 741202 | 7703198 | 20.20 | 4.75 | 183 | 3.80 | 0.51 | 0.18 | 0.63 |

**Address:** Suite 2, 28 Outram Street, West Perth WA 6005 **Postal:** PO Box 79, West Perth, WA 6872

**T:** +61 8 9381 5558 **E:** [terrain@terrainminerals.com.au](mailto:terrain@terrainminerals.com.au) **W:** [www.terrainminerals.com.au](http://www.terrainminerals.com.au)

|        |         |       |      |     |      |      |      |      |
|--------|---------|-------|------|-----|------|------|------|------|
| 738601 | 7703004 | 20.30 | 3.23 | 196 | 6.10 | 0.74 | 0.16 | 0.72 |
| 738802 | 7703002 | 21.30 | 3.53 | 187 | 5.90 | 0.78 | 0.17 | 0.80 |
| 739000 | 7703001 | 33.60 | 4.23 | 183 | 8.20 | 0.93 | 0.23 | 0.90 |
| 739202 | 7703005 | 24.00 | 3.84 | 197 | 6.00 | 0.81 | 0.18 | 0.82 |
| 739400 | 7703001 | 17.50 | 4.14 | 190 | 4.20 | 0.56 | 0.15 | 0.62 |
| 739601 | 7703003 | 18.80 | 4.40 | 191 | 4.70 | 0.56 | 0.15 | 0.74 |
| 739798 | 7703002 | 23.10 | 4.56 | 182 | 5.00 | 0.59 | 0.19 | 0.74 |
| 740005 | 7703002 | 21.30 | 4.62 | 189 | 4.60 | 0.57 | 0.19 | 0.69 |
| 740200 | 7703002 | 15.60 | 4.55 | 194 | 3.40 | 0.47 | 0.13 | 0.67 |
| 740401 | 7702997 | 15.40 | 4.63 | 197 | 3.30 | 0.45 | 0.13 | 0.53 |
| 740603 | 7703000 | 14.80 | 4.64 | 195 | 3.20 | 0.44 | 0.14 | 0.62 |
| 740798 | 7703000 | 20.30 | 4.97 | 186 | 4.00 | 0.51 | 0.17 | 0.66 |
| 740997 | 7703001 | 22.40 | 4.94 | 189 | 3.80 | 0.51 | 0.18 | 0.74 |
| 741201 | 7703005 | 20.10 | 4.92 | 185 | 3.70 | 0.45 | 0.15 | 0.61 |
| 739805 | 7702794 | 20.60 | 4.52 | 196 | 4.40 | 0.54 | 0.16 | 0.71 |
| 740003 | 7702796 | 14.30 | 4.28 | 199 | 3.10 | 0.42 | 0.13 | 0.58 |
| 740202 | 7702797 | 14.60 | 4.41 | 191 | 3.40 | 0.47 | 0.13 | 0.56 |
| 740406 | 7702796 | 16.50 | 4.62 | 195 | 3.50 | 0.46 | 0.15 | 0.59 |
| 740597 | 7702798 | 17.50 | 4.66 | 194 | 3.50 | 0.46 | 0.16 | 0.70 |
| 740805 | 7702800 | 16.00 | 4.54 | 190 | 3.00 | 0.41 | 0.13 | 0.57 |
| 740998 | 7702799 | 23.30 | 5.08 | 184 | 8.80 | 1.75 | 0.19 | 0.62 |
| 741200 | 7702798 | 26.10 | 5.23 | 180 | 4.90 | 0.86 | 0.21 | 0.74 |
| 740600 | 7702597 | 19.60 | 4.69 | 187 | 3.80 | 1.75 | 0.16 | 0.56 |
| 740799 | 7702599 | 21.40 | 5.04 | 187 | 4.20 | 0.73 | 0.18 | 0.55 |
| 741001 | 7702601 | 19.40 | 4.83 | 186 | 3.50 | 0.54 | 0.16 | 0.59 |
| 741202 | 7702601 | 16.70 | 4.71 | 188 | 3.00 | 0.44 | 0.13 | 0.65 |
| 741201 | 7702386 | 19.80 | 4.77 | 185 | 3.50 | 0.47 | 0.15 | 0.61 |

**For more information, contact:**

Justin Virgin - Executive Director  
Email: [terrain@terrainminerals.com.au](mailto:terrain@terrainminerals.com.au)  
Phone: +61 8 9381 5558

**Authority**

This announcement has been authorised for release by Mr Justin Virgin, Executive Director, Terrain Minerals.

## About Terrain Minerals

Terrain Minerals Limited (ASX: TMX | FRA: T4Y) is a Perth-based mineral exploration company with a diversified portfolio of 100%-owned projects across Western Australia and Queensland. The Company is focused on creating shareholder value through discovery, resource growth and strategic partnerships across gold, lithium, rare earths, gallium, copper and base metals.

### Smokebush Gold-Silver Project, Western Australia - (Flagship Project)

The Company's 100% owned Smokebush Project is located within the prospective Yalgoo Mineral Field, approximately 350 kilometres north of Perth. The Project neighbours Warriedar Resources' Golden Range Project and is 50 kilometres south of 29Metals' Golden Grove operation, with Vault Mining's operating Rothsay Gold Mine only 15 kilometres west of the Lightning Gold Prospect, and within proximity to Capricorn Metals' 4.5-million-ounce Mt Gibson Gold Deposit.

Specific prospects within the Smokebush Project include:

**Lightning Gold Prospect** – The Company's most advanced gold target, with Mining Lease M59/0796 granted. A maiden JORC (2012) Mineral Resource Estimate (MRE) is targeted for mid-2026, supported by a recently completed reverse circulation drilling campaign and a four-hole diamond drilling program designed to provide oriented structural data and bulk density measurements. Recent high-grade intercepts include 22 metres at 2.71 g/t gold from 105 metres, 13 metres at 8.13 g/t gold from 122 metres, 8 metres at 6.87 g/t gold from 76 metres, and 3.4 metres at 4.96 g/t gold from 213.6 metres in diamond hole SBDD002 (including 1 metre at 10.93 g/t gold).

**Wildflower Gold Prospect** – An extensive 1,000 metre by 500 metre gold-in-soil surface geochemical anomaly located approximately 3 kilometres south of Lightning, around the same intrusive system. A recently completed 13-hole, 2,300-metre RC drilling program tested induced polarisation (IP) targets defined within the broader anomaly. Wildflower is a target for future investigation as the exploration program at Lightning matures.

**Larin's Lane Gallium Prospect** – Maiden drilling in late 2023 intersected broad zones of gallium mineralisation over a 9 kilometre by 3-kilometre area. The mineralisation remains untested along strike and has the potential to grow into a significant clay-hosted gallium and rare earth project. Terrain released an Exploration Target for Larin's Lane in September 2024 and is progressing metallurgical studies as part of the MRIWA-funded research program co-funded by industry and the Western Australian Government.

### Carlindie Lithium/Gold Project, Western Australia

The Company's 100% owned Carlindie Project is located approximately 90 kilometres southeast of Port Hedland. The Project is positioned along the interpreted extension of the tectonic structure that hosts Wildcat Resources' (ASX: WC8) Tabba Tabba lithium deposit (74.1Mt @ 1.0% Li<sub>2</sub>O) and the recently discovered Bolt Cutter Central lithium mineralisation. As described above, a first-pass soil survey has defined a coherent multi-element gold-pathfinder anomaly across the south-eastern part of the surveyed area at Carlindie, convergent with the interpreted concealed greenstone target independently defined by an RSC machine-learning study, and the Company is advancing on-ground reconnaissance from July 2026 followed by a cover-adapted UltraFine+ soil program from August. Departmental approval is already in place for up to 100 reverse circulation drill holes at Carlindie.

### Lort River Rare Earths Project, Western Australia

The Company's 100% owned Lort River Project is located approximately 50 kilometres northwest of Esperance and lies within the highly prospective Albany-Fraser Belt. Reconnaissance drilling in early 2025 intersected high-grade clay-hosted rare earths, confirming the Project's potential to host the in-demand magnet rare earths neodymium (Nd) and praseodymium (Pr), with assays comparing favourably to existing Australian and Brazilian clay-hosted rare earth projects.

---

**Address:** Suite 2, 28 Outram Street, West Perth WA 6005 **Postal:** PO Box 79, West Perth, WA 6872

**T:** +61 8 9381 5558 **E:** [terrain@terrainminerals.com.au](mailto:terrain@terrainminerals.com.au) **W:** [www.terrainminerals.com.au](http://www.terrainminerals.com.au)

## Biloela Copper-Gold Project, Queensland

The Company's 100% owned Biloela Project covers over 2,500 km<sup>2</sup> of highly prospective ground adjacent to and along strike of the Cracow Gold Mine. The tenement package contains at least two known historic copper mines as well as numerous copper and gold targets, first identified by Rio Tinto, Gold Fields Limited and Newcrest Mining.

## Project Review and Trade Opportunities

Terrain Minerals continues to investigate potential projects across various commodities. Whilst Western Australian-based projects are the Company's current focus, other parts of Australia are being examined, as are other jurisdictions including Africa, Europe and the Americas. The Company is, and remains, open to commercial discussions in relation to potentially divesting its interest in any of its assets, either via sale (full or partial) or through a joint venture arrangement.



## Previously Reported Results

This report does not contain any previously reported results by Terrain Minerals. The first-pass soil survey results reported in this announcement are first-time disclosures by the Company. Mineral Resource and exploration results referenced for Wildcat Resources Limited are previously reported by that company and are footnoted accordingly.

**Address:** Suite 2, 28 Outram Street, West Perth WA 6005 **Postal:** PO Box 79, West Perth, WA 6872

**T:** +61 8 9381 5558 **E:** [terrain@terrainminerals.com.au](mailto:terrain@terrainminerals.com.au) **W:** [www.terrainminerals.com.au](http://www.terrainminerals.com.au)

## **Disclaimer**

Information included in this report constitutes forward looking statements. Often, but not always, forward looking statements can generally be identified by the use of forward looking words such as "may", "will", "expect", "intend", "plan", "estimate", "anticipate", "continue" and "guidance" or other similar words, and may include, without limitation, statements regarding plans, strategies and objectives of management, anticipated production or construction commencement dates and expected costs or production outputs. Forward looking statements inherently involve known and unknown risks, uncertainties and other factors that may cause the company's actual results, performance, and achievements to differ materially from any future results, performance or achievements. Relevant factors may include, but are not limited to, changes in commodity prices, foreign exchange fluctuations and general economic conditions, increased costs and demand for production inputs, the speculative nature of exploration and project development, including the risks of obtaining necessary licences and permits and diminishing quantities or grades of reserves, political and social risks, changes to the regulatory framework within which the company operates or may in the future operate environmental conditions including extreme weather conditions, staffing and litigation. Forward looking statements are based on the company and its management's assumptions made in good faith relating to the financial, market, regulatory and other relevant environments that exist and effect the company's business operations in the future. Readers are cautioned not to place undue reliance on forward looking statements. Forward looking statements are only current and relevant for the date of issue. Subject to any continuing obligations under applicable law or any relevant stock exchange listing rules, in providing this information the company does not undertake any obligation to publicly update or revise any of the forward-looking statements or advise of any change in events, conditions or circumstances on which such statement is based.

## **Competent Person's Statement**

The information in this report that relates to Exploration Results is based on information compiled by Mr Steve Nicholls, who is a Member of the Australian Institute of Geoscientists. Mr Nicholls is an independent geological consultant and is a full-time employee of Apex Geoscience. Mr Nicholls is not a shareholder and options holder of Terrain Minerals Limited. The full nature of the relationship between Mr Nicholls and Terrain Minerals has been disclosed, including any issue that could be perceived by investors as a conflict of interest. Mr Nicholls has sufficient experience which is relevant to the style of mineralisation and type of deposit under consideration and to the activity which he is undertaking to qualify as a Competent Person as defined in the 2012 Edition of the 'Australasian Code for Reporting of Exploration Results, Mineral Resources and Ore Reserves'. Mr Nicholls consents to the inclusion in the report of the matters based on his information in the form and context in which it appears.

# JORC CODE, 2012 EDITION – TABLE 1

## Section 1: Sampling Techniques and Data

| Criteria  | JORC Code Explanation – Commentary   |
|---|--|
| <b>Sampling techniques</b>                            | Soil samples were systematically taken across the prospective area on a 200 metre by 200 metre spaced grid. Each sample was taken from the base of a manually excavated pit typically between 100 to 300 millimetres deep dependent on the sample medium and depth to target soil B-horizon. Using hand tools the pit was dug and loose material scooped into a series of metallic sieves. The fine fraction from the 0.4 millimetre sieve was then placed into numbered paper envelopes and dispatched to a certified laboratory for assay. Approximately 200 to 300 gram weight samples were collected.  |
| <b>Drilling techniques</b>                            | Not applicable as no drilling results are reported within this document.   |
| <b>Drill sample recovery</b>                          | Not applicable as no drilling results are reported within this document.   |
| <b>Logging</b>  | Soil samples were logged for soil type, colour and texture. This logging is qualitative in nature. The corresponding landform of each soil sample location was recorded. The sample, sample pit and sample location landscape were photographed.   |
| <b>Sub-sampling techniques and sample preparation</b> | Not applicable as no drilling results are reported within this document.<br>No subsampling was conducted. All samples were dry when sieved with the fine fraction from the 0.4 millimetre sieve collected. The sample preparation technique was standardized across all samples and is considered appropriate to produce a consistent unbiased and accurate sample. The sample was taken from the bottom of the excavated pit being sure to minimize the amount of surface material entering and contaminating the sample.   |
| <b>Quality of assay data and laboratory tests</b>     | Samples were submitted to Intertek Perth an independent, internationally accredited laboratory. No QAQC field samples were inserted into the sample stream as they were not deemed necessary at this stage of exploration. The laboratory operates its own internal QAQC program including analysis of blanks and certified reference materials as well as repeats and this was considered adequate.<br><br>All assay results were checked by independent geological data management company Expedio before being used. The Competent Person confirms that the analysed batches performed within acceptable accuracy and precision limits for the style of mineralisation. |

|   |  |
|---|--|
| <p><b>Verification of sampling and assaying</b></p>                   | <p>Significant results have been verified by re-examination of the original assay certificates against the geological database. The database was validated through Expedio as part of the broader data management program.</p> <p>No independent umpire laboratory checks have been completed for this program. The Competent Person considers the Intertek results to be reliable based on the laboratory's accreditation status and the satisfactory performance of inserted QAQC samples.</p> <p>The assay data were provided by Intertek in elemental form, and no adjustments were made to the assay data.</p> <p>The primary data was captured in the field onto a tablet and included the sample logging, ID, location and photographs. This data together with the lab assay data was imported into a company database managed by Expedio.</p> |
| <p><b>Location of data points</b></p>                                 | <p>All soil sample locations were surveyed using a handheld GPS with an accuracy of <math>\pm 5</math> metres. This level of accuracy is considered adequate for determining the sample location. Coordinates are reported in GDA94 Zone 50.</p>   |
| <p><b>Data spacing and distribution</b></p>                           | <p>Soils were systematically sampled across the prospective areas on a 200 metre by 200 metre spacing and at an averaged depth of 300 millimetres, targeting the B-horizon where present. This spacing is considered adequate for early-stage exploration.</p> <p>No drilling results are reported within this document</p> <p>No Mineral Resource or Ore Reserve estimation has been completed</p> <p>No sample compositing has been applied</p>  |
| <p><b>Orientation of data in relation to geological structure</b></p> | <p>Sampling lines were oriented north-south, perpendicular to the east-west striking geological feature of interest. Subsequent soil programs will be oriented on the same basis to maintain consistency across the combined dataset.</p>  |
| <p><b>Sample security</b></p>   | <p>Samples were labelled in the field with unique Sample ID and GPS coordinates and stored in a locked location. Samples were delivered by commercial freight line direct to Intertek Perth.</p> <p>The Company considers the sample security procedures to be adequate and consistent with industry standard practice.</p>  |
| <p><b>Audits or reviews</b></p>                                       | <p>The soil sampling program has been planned and reviewed by the Company's Competent Person for this project. No independent external audit of the sampling and assaying procedures for this specific program has been completed.</p>   |

## Section 2: Reporting of Exploration Results

| Criteria                                       | JORC Code Explanation – Commentary   |
|--|--|
| <b>Mineral tenement and land tenure status</b> | <p>The Carlindie Project is located approximately 90 kilometres southeast of Port Hedland, Western Australia. The project is comprised of four granted exploration licences (E45/6523, E45/6524, E45/6951 and E45/6952)</p> <p>The exploration results discussed within this report relate to granted tenement E45/6524, 100% owned by Terrain Minerals Limited.</p> <p>The tenements are in good standing with all statutory requirements and there are no known impediments to future exploration within these tenements.</p>  |
| <b>Exploration done by other parties</b>       | <p>The Carlindie Project was initially identified via open-file geological and geophysical datasets obtained by Terrain Minerals from the Geological Survey of Western Australia.</p> <p>Terrain Minerals is unaware of any previous material exploration completed by other parties across tenements E45/6524.</p>  |
| <b>Geology</b>                                 | <p>The Pilbara Craton consists of three major lithotectonic units: the East Pilbara Terrane (3,530–2,840 Ma), the West Pilbara Superterrane (3,280–3,066 Ma), and the De Grey Supergroup (3,066–2,919 Ma).</p> <p>Terrain Minerals’ Carlindie Project lies in the Carlindi Dome in the East Pilbara Terrane which comprises large granitic domes, bounded by tightly folded volcanic-sedimentary greenstone successions formed during mantle plume events from 3,530–3,220 Ma. The periodic diapiric uplift of granitic crust, accompanied by subduction of adjacent greenstones, formed the dome-and-keel architecture of the East Pilbara Terrane.</p> <p>The Carlindi Dome is a granite-greenstone complex located between major structural and geological domains. It is bound to the northwest by the Tabba Tabba Shear Zone and to the southeast by the Lalla Rookh-Western Shaw Fault.</p> <p>Lithium mineralisation in the Pilbara Craton is predominantly associated (both temporally and spatially) with fractionated felsic intrusions of the Split Rock Supersuite, which occur parallel to a broad north-northwest trend in the Pilbara Craton. Economically important lithium pegmatites form near faulted contacts between the Split Rock Supersuite and basalt-dominated greenstone belts.</p> |
| <b>Drill hole information</b>                  | <p>No drilling results are reported within this document.</p> <p>The point location of each soil sample is displayed in the maps included in the report</p>  |

|   |  |
|---|--|
| <b>Data aggregation methods</b>   | Not applicable as no drilling results are reported within this document.   |
| <b>Relationship between mineralisation widths and intercept lengths</b> | Insufficient data is available to fully confirm a geological model for any mineralisation within Terrain Minerals' Carlindie Project. As such, all results within this report as point source locations only.  |
| <b>Diagrams</b>   | <p>The significant information described within this report have been reported and described within the following diagrams.</p> <p><b>Diagram 1.</b> Location of the Carlindie Project within the East Pilbara, approximately 90 kilometres southeast of Port Hedland, Western Australia. The Project is strategically positioned between Wildcat Resources' (ASX: WC8) Tabba Tabba lithium deposit and SQM-Kali Metals' (ASX: KM1) Pilbara lithium ground in a province that also hosts Pilbara Minerals' Pilgangoora operation and Mineral Resources' Wodgina lithium mine.</p> <p><b>Diagram 2.</b> Plan of arsenic (As) in soils across the surveyed grid at Carlindie, showing the coherent multi-kilometre arsenic response defining the south-eastern part of the gold-pathfinder anomaly footprint.</p> <p><b>Diagram 3.</b> Plan of antimony (Sb) in soils across the surveyed grid at Carlindie, showing the coherent multi-kilometre antimony response coincident with the arsenic anomaly in the south-eastern part of the surveyed area, and consistent with an Archaean orogenic gold pathfinder signature.</p> <p><b>Diagram 4.</b> Processing of the open-file Western Australian Government aeromagnetic data highlighted that the tectonic structure associated with Wildcat Resources' Tabba Tabba lithium deposit extends into Terrain Minerals' Carlindie Project. This results in Terrain Minerals identifying more than 15 kilometres of prospective geology within its 100% owned tenement E45/6524. The prospectivity of this tectonic structure was strengthened following Wildcat Resources' ASX announcement dated 4 August 2025, where they reported multiple lithium-bearing pegmatite swarms at Bolt Cutter Central, the interpreted western extension of the same tectonic structure that extends into Terrain Minerals' Carlindie Project.</p> <p><b>Diagram 5.</b> RSC machine-learning prospectivity output over the Carlindie Project, showing the priority lithium and gold target footprints that the cover-adapted soil program and field reconnaissance will test.</p> |
| <b>Balanced reporting</b>   | All significant results from the program have been reported.   |

|  |   |
|--|---|
|  | <p>There is insufficient data available at this early stage of the Company’s exploration program to confirm a geological model for Terrain Minerals’ Carlindie Project. As such, all results within this report are noted as point sources.</p> <p>In the Competent Person’s opinion, the Exploration Results in this report have been reported in a balanced manner.</p>   |
| <p><b>Other substantive exploration data</b></p> | <p>The primary purpose of the first-pass soil survey was to test for lithium and multi-element pathfinder anomalies associated with an interpreted tectonic structure under cover. The survey defined a coherent, large-area, multi-element gold-pathfinder anomaly (As-Sb-Bi-W-Cs) across approximately 4 by 3 kilometres in the south-eastern part of the surveyed area, with a higher-intensity Bi-W point within the footprint, and returned low-order lithium across the grid. A cover-adapted UltraFine+ soil program from August 2026 will validate the anomaly and test the continuation of the target north and south within E45/6524, with results expected in Q4 2026. Further coverage across the balance of the magenta target area within E45/6524 and E45/6951, including a second machine-learning target to the north, is planned for 2027.</p> <p>In the Competent Person’s opinion, all meaningful and material exploration data related to the Carlindie project and the first-pass soil survey to which this report relates have been included within this report. The UltraFine+ soil program described in this report is a forward exploration activity over previously unsampled ground; results from that program will be reported once received.</p> <p>RSC’s machine-learning-assisted bedrock mapping utilised regional magnetic, gravity and radiometric datasets publicly available from the Geological Survey of Western Australia. RSC considers the quality and resolution of the regional datasets appropriate for generating a bedrock map to use for early-stage targeting. The datasets were combined and processed as spatial grids to identify patterns in petrophysical responses. An unsupervised clustering approach was applied to group areas with similar geophysical characteristics, allowing the delineation of spatial domains that may correspond to different lithologies or geological features. Dimensionality reduction (principal component analysis) was used to enhance signal and reduce noise prior to clustering. The resulting clusters were further grouped and interpreted in a geological context to produce an inferred bedrock map beneath cover, which was used to define target areas, e.g. interpreted concealed greenstone.</p> |
| <p><b>Further work</b></p>                       | <p>With a coherent multi-element gold-pathfinder anomaly defined in the first-pass soils and convergent with the RSC machine-learning bedrock interpretation, Terrain Minerals is progressing the following activities:</p> <ul style="list-style-type: none"> <li>• <b>UltraFine+ soil program:</b> a staged, cover-adapted UltraFine+ soil program from August 2026: 200 by 200 metre UltraFine+ re-survey of the south-eastern anomaly footprint to validate the multi-element response, followed by 100 by 100 metre infill over the</li> </ul>   |

anomaly core and a 50 by 50 metre detailed grid over the Bi-W high-intensity point, plus 200 by 200 metre reconnaissance testing the continuation of the target north and south within E45/6524, with results expected in Q4 2026. Further coverage across the balance of the magenta target area within E45/6524 and E45/6951 is planned for 2027.

- **Lithium target follow-up:** on-ground reconnaissance from July 2026, comprising prospecting and rock chip sampling at the high-intensity Bi-W site within the gold-pathfinder anomaly footprint and over the lithium target areas where the RSC radiometric interpretation indicates no or shallow cover.
- **Drill-testing decision:** the Company will assess the cover-adapted geochemistry and field reconnaissance results to determine the timing and scope of any future drilling campaign. The Company has already obtained Programme of Works approval from the Department of Minerals, Petroleum and Exploration (DMPE) to drill up to 100 holes at Carlindie.