

## ASX ANNOUNCEMENT

3 June 2026



### CGN Finalises Desdemona Transaction Securing Major District-Scale Gold Position

#### Highlights:

- **CGN completes Desdemona acquisition from Patronus Resources creating district-scale gold position in Leonora**
- **Highly strategic 255km<sup>2</sup> landholding located along strike from major gold mines Gwalia (8Moz) and Ulysses (2Moz)**
- **Project covers the same fertile geological corridor hosting Gwalia, Ulysses, Admiral and Orient Well deposits**
- **Multiple High-grade drilling results in historical drilling represent walk up targets**
- **Extensive greenfield upside with large areas of highly prospective stratigraphy under shallow cover and minimal historical drilling**
- **Active exploration planning underway targeting multiple drill-ready gold prospects**

**CGN Resources Limited (CGN or the Company, ASX: CGR)** is pleased to announce the acquisition of the Desdemona Project from Patronus Resources Limited is now complete. The tenure totalling 142 km<sup>2</sup> (Figure 1) are now transferred to CGN Resources Limited. When combined with CGN's existing tenure at Christmas Well and Panhandle, the consolidated landholding forms a highly strategic 385 km<sup>2</sup>, district-scale position in one of Australia's most prolifically endowed gold terranes.

The new tenure is strategically positioned along strike from the Gwalia Mine to the north and also contains the same highly prospective stratigraphic corridor that hosts the Ulysses, Admiral and Orient Well gold deposits to the south. Historical drilling has intersected an abundance of high-grade gold mineralisation across multiple targets ((Figure 2 and Appendix 1), examples include:

- **9m @ 20.20g/t Au from 61m at the Pelican Prospect**
- **3m @ 17.28g/t Au from 170m at Annapurna**
- **3m @ 13.27g/t Au from 42m and 12m @ 2.04g/t Au from 48m at Paradise North**

(See Appendix 1 for a more detailed list of intercepts and the announcement issued on 3/3/2026)

This transformative acquisition delivers advanced and emerging gold targets across a highly prospective district-scale land package. Known mineralised trends remain untested along strike and at depth, providing scope to unlock further gold mineralisation. In addition, extensive areas of prospective stratigraphy beneath shallow transported cover have seen ineffective historical exploration with genuine potential for new greenfield discoveries. With high-grade drilling results, favourable geology and a commanding land position in one of Australia's premier gold belts, CGN believes there is exceptional potential to generate meaningful new discoveries and long-term shareholder value.

#### **CGN Resources Managing Director, Stan Wholley, commented:**

"Completion of this acquisition represents a genuine step-change in CGN's Leonora growth strategy, delivering a major district-scale landholding in the heart of one of Australia's most productive gold regions. The scale, prospectivity and strategic location of the project make this an exciting time for the Company as we transition into active exploration.

With a substantial pipeline of high-quality exploration opportunities now secured, CGN is well positioned to undertake disciplined, modern exploration across this highly prospective and world-class gold terrain. Our goal is to deliver meaningful new discoveries and long-term value for shareholders. The company aims to be on the ground and complete initial ground truthing and prospecting as part of the field programs commencing at the end of the month".

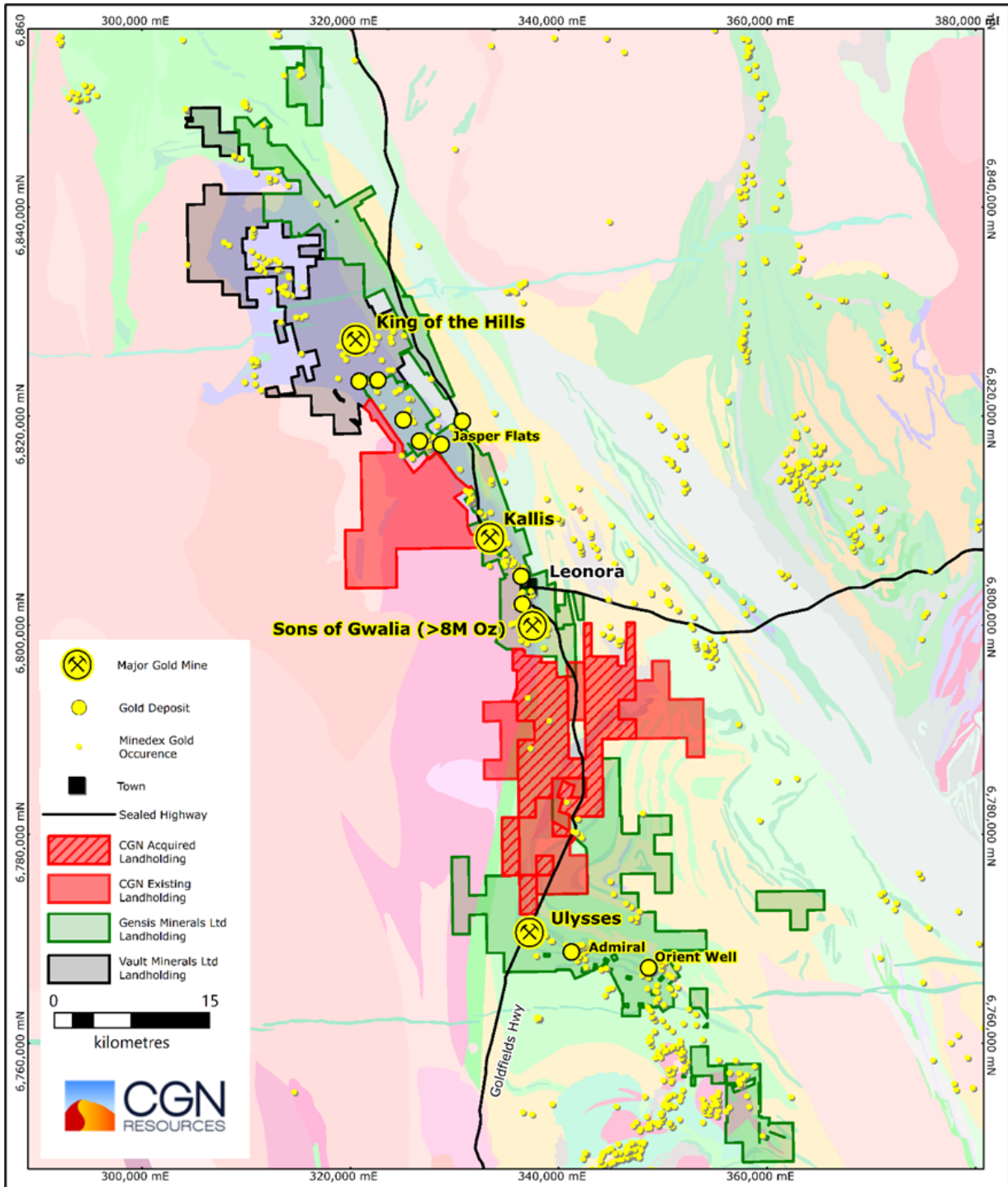


Figure 1. CGN acquires an additional 142 km<sup>2</sup> area strategically located in the prolific Leonora gold district.

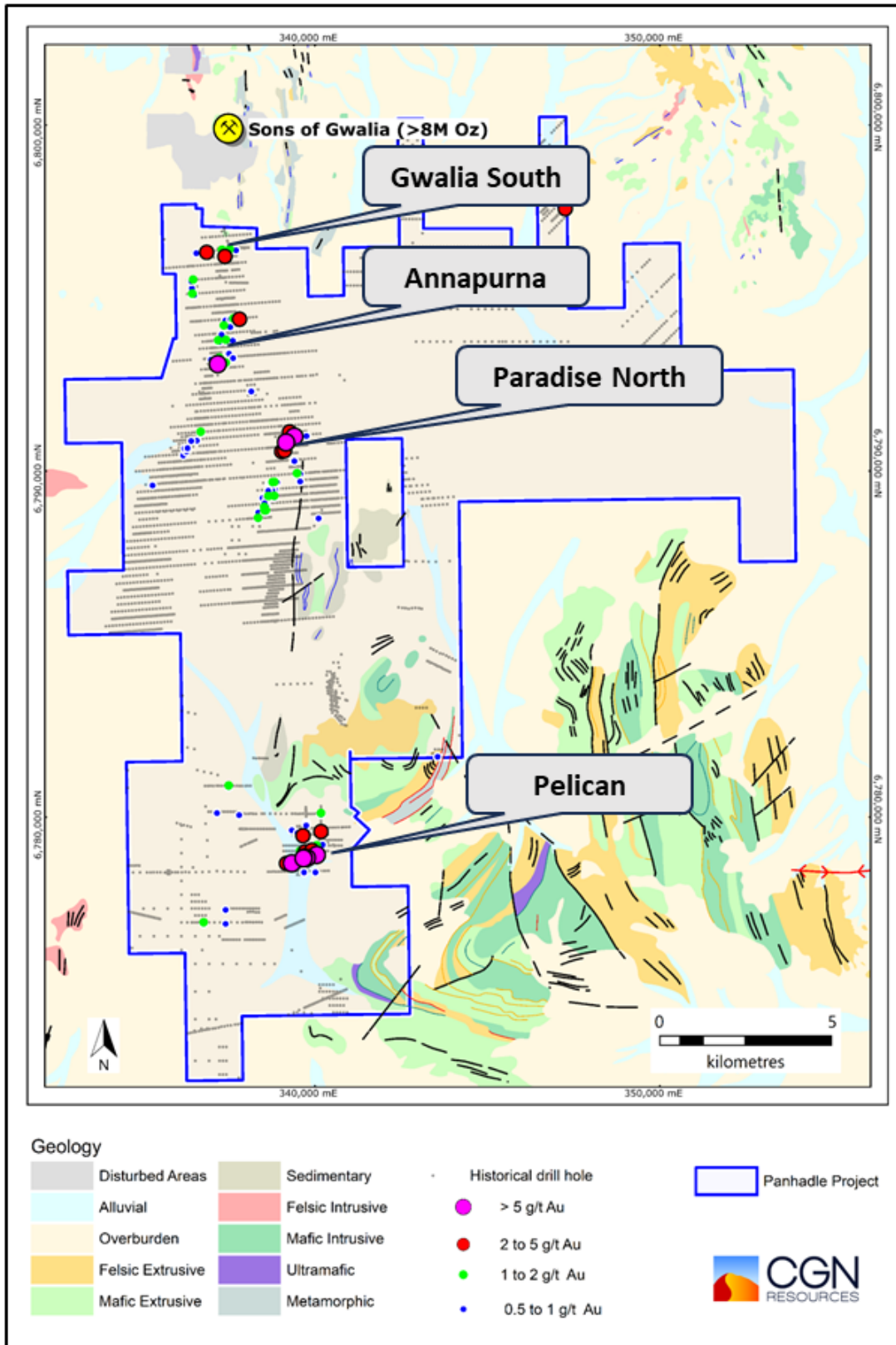


Figure 2. Regional gold trends and historical drilling over outcrop geology (announcement 3/3/26)

## ASX ANNOUNCEMENT

3 June 2026



### Acquisition Summary

The Company negotiated a straightforward deal structure that preserves cash for high-priority exploration and discovery activities, while bringing Patronus onto the share register as a technically aligned shareholder with strong knowledge of the project area. The deal metrics are summarised below:

- **5,000,000 CGN ordinary shares** (representing approximately 4.3% of the fully diluted entity and valued at approx. \$500,000 based on current pricing, escrowed for 12 months).
- **Milestone 1:** A \$250,000 cash payment upon declaration of a JORC 2012-compliant Mineral Resource exceeding 100,000 oz Au.
- **Milestone 2:** A \$500,000 cash payment upon a decision to mine.

Now all the conditions precedent are completed the company has issued the new shares and welcomes Patronus Resources Limited as a new shareholder in the Company.

### ENDS

This announcement has been authorised by the Board of Directors of the Company.

#### For Further Information, Please Contact:

Mr Stan Wholley <b>Managing Director</b> Tel: +61 421 109 664 <a href="mailto:info@cgnresources.com.au">info@cgnresources.com.au</a>	Mr Grant Mooney <b>Non-Executive Director / Company Secretary</b> Tel: +61 8 9226 0085 <a href="mailto:info@cgnresources.com.au">info@cgnresources.com.au</a>
---	--

### Forward-Looking Statements

This document may include forward-looking statements. Forward-looking statements include, but are not limited to, statements concerning CGN Resources Limited's planned exploration programme and other statements that are not historical facts. When used in this document, the words such as "could," "plan," "estimate," "expect," "intend," "may," "potential," "should," and similar expressions are forward-looking statements. Although CGN Resources Limited believes that its expectations reflected in these forward-looking statements are reasonable, such statements involve risks and uncertainties and no assurance can be given that actual results will be consistent with these forward-looking statements.

### Competent Person's Statement

The information in this announcement that relates to Exploration Results for the Webb Project is based on, and fairly represents, information compiled by Mr Daniel Wholley, a Competent Person who is a Member of the Australian Institute Geoscientists (AIG). Mr Wholley is a fulltime employee of CGN Resources Limited. Mr Wholley has sufficient experience that is relevant to the style of mineralisation and type of deposit under consideration, and to the activity being undertaken to qualify as a Competent Person as defined in the 2012 Edition of the JORC Code. Mr Wholley consents to the inclusion in the report of the matters based on his information in the form and context in which it appears.

**ASX ANNOUNCEMENT**

3 June 2026

**Appendix 1**

*Historical drilling significant gold Intercepts greater than 0.5 g/t Au with no internal dilution, down Hole widths, true widths not known, Co-ordinates are reported in GDA94 Zone 51 projection (previously announced 3/3/26)*

Hole No	East	North	From	To	Grade (Au g/t)	Interval (m)	Prospect	Hole Type
HWA037	339769	6778850	61	70	20.20	9	Pelican	AC
CWC779	337191	6793119	170	173	17.28	3	Annapurna	RC
CWA728	339409	6791025	42	45	13.27	3	Paradise North	AC
HWRC002	339678	6778858	111	112	9.29	1	Pelican	RC
HWA115	339337	6778698	47	48	9.23	1	Pelican	AC
CWA734	339170	6790857	30	33	8.15	3	Paradise North	AC
HWA124	340057	6778938	45	49	6.19	4	Pelican	AC
HWRC001	339769	6778850	104	105	5.64	1	Pelican	RC
HWRC005	339677	6778838	110	111	5.60	1	Pelican	RC
HWRC003	339796	6778858	53	54	4.57	1	Pelican	RC
CWA757	339268	6791165	30	33	4.40	3	Paradise North	AC
MEC447	339117	6790620	107	108	3.63	1	Paradise North	RC
RRC0030	347255	6797614	35	36	3.54	1	Raeside	RC
CWA737	339132	6790704	48	52	3.02	4	Paradise North	AC
HWA117	339177	6778698	44	45	3.01	1	Pelican	AC
CWA578	339260	6791014	63	65	2.86	2	Paradise North	AC
HWA058	340179	6779615	47	48	2.72	1	Central Well	AC
HWRC010	339723	6779032	94	95	2.66	1	Pelican	RC
ECDD0005	337818	6794420	325.52	326.52	2.63	1	Elcapitan	DD
HWA166	339657	6779498	35	36	2.56	1	Central Well	AC
SGD042	337395	6796236	95.18	96.01	2.55	0.83	Annapurna	DD
CWA510	336865	6796353	60	63	2.43	3	Central Well	AC
ECDD0005	337818	6794420	260.81	261.4	2.26	0.59	Elcapitan	DD
HWRC016	339913	6779079	46	48	2.23	2	Pelican	RC
HWA038	339842	6778848	56	61	2.20	5	Pelican	AC
HWA125	339977	6779018	47	50	2.07	3	Pelican	AC
MEA261	339039	6790596	39	41	2.04	2	Paradise North	AC
CWA757	339268	6791165	48	60	2.04	12	Paradise North	AC
RRC0026	346540	6798044	19	20	1.95	1	Pelican	RC
ECDD0006	337419	6793122	322.68	323.82	1.92	1.14	Elcapitan	DD
HWD001	339737	6778783	56	60	1.80	4	Pelican	DD
HWRC003	339796	6778858	51	52	1.74	1	Pelican	RC

**ASX ANNOUNCEMENT**

3 June 2026



Hole No	East	North	From	To	Grade (Au g/t)	Interval (m)	Prospect	Hole Type
HWA038	339842	6778848	51	55	1.74	4	Pelican	AC
CEC005	337538	6796402	35	36	1.71	1	Annapurna	RC
HWA039	339917	6778842	43	45	1.71	2	Pelican	AC
GS16RC003	337234	6793268	54	55	1.68	1	Annapurna	RC
HWRC006	339717	6778838	63	64	1.62	1	Pelican	RC
HWA128	339737	6779018	42	45	1.62	3	Pelican	AC
CWC765	337367	6794200	76	77	1.60	1	Annapurna	RC
21DSAC0181	336781	6776956	70	71	1.60	1	Egret	AC
HWRC009	339697	6778858	50	55	1.58	5	Pelican	RC
CWA624	337204	6793771	95	98	1.54	3	Annapurna	AC
HWA090	340178	6780108	36	37	1.51	1	Desdemona	AC
OWD004	338830	6789679	41	43	1.50	2	Desdemona	DD
20DSAC061	337505	6780906	57	58	1.49	1	Hotspot	AC
HWRC017	339942	6779049	68	70	1.43	2	Pelican	RC
PL14RC003	339943	6779059	110	112	1.43	2	Pelican	RC
HWA038	339842	6778848	32	33	1.42	1	Pelican	AC
PL14RC003	339943	6779059	69	70	1.42	1	Pelican	RC
CWC786	337197	6793168	183	184	1.39	1	Annapurna	RC
SGP025	339111	6790702	46	48	1.39	2	Paradise North	RC
CWD776	337422	6793786	149	150	1.36	1	Annapurna	DD
HWA038	339842	6778848	46	47	1.36	1	Pelican	AC
SGR012	337314	6796386	10	14	1.35	4	Annapurna	RAB
ECDD0005	337818	6794420	435.99	436.6	1.35	0.61	Elcapitan	DD
HWRC010	339723	6779032	67	69	1.35	2	Pelican	RC
MER394	339489	6789928	21	27	1.34	6	Melita	AC
CWC769	337116	6793128	129	130	1.29	1	Annapurna	RC
CWC773	339209	6790727	83	84	1.29	1	Paradise North	RC
HWRC016	339913	6779079	24	26	1.27	2	Pelican	RC
CWC791	339068	6790696	25	28	1.25	3	Paradise North	RC
HWRC030	339493	6778768	62	64	1.24	2	Pelican	RC
HWRC006	339717	6778838	65	66	1.22	1	Pelican	RC
HWRC010	339723	6779032	38	40	1.21	2	Pelican	RC
CWC782	337642	6794405	198	199	1.19	1	Annapurna	RC
HWRC014	339808	6778947	85	86	1.19	1	Pelican	RC
OWP016	338544	6788856	21	28	1.18	7	Desdemona	RC
20DSRC011D	338657	6789270	31	33	1.18	2		DD
CWA734	339170	6790857	24	27	1.18	3	Paradise North	AC

**ASX ANNOUNCEMENT**

3 June 2026



Hole No	East	North	From	To	Grade (Au g/t)	Interval (m)	Prospect	Hole Type
CWA221	336454	6795120	90	96	1.18	6	Central Well	AC
SGP024	338359	6788642	36	37	1.17	1	Desdemona	RC
HWA144	340057	6779178	29	30	1.17	1	Pelican	AC
SGP017	338537	6788956	21	22	1.16	1	Desdemona	RC
CWC784	337058	6793118	63	64	1.15	1	Annapurna	RC
ECDD0006	337419	6793122	325.2	326	1.15	0.8	Elcapitan	DD
SGP035	338824	6789278	68	69	1.14	1	Desdemona	RC
MER422	338806	6789678	24	30	1.13	6	Melita	RAB
HWA037	339769	6778850	72	76	1.12	4	Pelican	AC
20DSRC011D	338657	6789270	34	37	1.12	3		DD
SGP019	338584	6788859	27	28	1.11	1	Desdemona	RC
RRC0043	347296	6797603	40	42	1.11	2	Raeside	RC
HWA130	339577	6779018	14	15	1.10	1	Pelican	AC
OWP016	338544	6788856	15	19	1.10	4	Desdemona	RC
HWA102	339577	6778778	46	48	1.10	2	Pelican	AC
CWA500	336475	6795523	93	103	1.07	10	Central Well	AC
OWP003	338780	6789675	60	62	1.06	2	Desdemona	RC
CWC781	339368	6791172	100	102	1.04	2	Paradise North	RC
CWA096	336695	6791127	39	43	1.02	4	Central Well	AC
HWRC001	339769	6778850	50	51	1.02	1	Pelican	RC
HWA125	339977	6779018	6	8	1.00	2	Pelican	AC
HWRC002	339678	6778858	47	48	1.00	1	Pelican	RC
OWP016	338544	6788856	30	31	0.99	1	Desdemona	RC
HWA037	339769	6778850	53	54	0.98	1	Pelican	AC
HWRC025	340228	6779239	68	70	0.98	2	Pelican	RC
20DSAC060	339689	6778443	46	49	0.97	3	Pelican	AC
PD16RC001	339328	6791203	47	48	0.97	1	Paradise North	RC
CWC766	337447	6794206	111	112	0.95	1	Annapurna	RC
HWRC011	339751	6779004	40	44	0.95	4	Pelican	RC
MEC453	338556	6789274	64	66	0.95	2	Melita	RC
OWP003	338780	6789675	53	57	0.94	4	Desdemona	RC
HWA038	339842	6778848	48	50	0.93	2	Pelican	AC
OWD001	338681	6789668	118	119	0.92	1	Desdemona	DD
SGP034	338650	6789465	15	16	0.92	1	Desdemona	RC
MBA195	336190	6790489	30	32	0.92	2	Desdemona	AC
CWC773	339209	6790727	85	86	0.91	1	Paradise North	RC
CWA495	336503	6795124	93	96	0.91	3	Central Well	AC

## ASX ANNOUNCEMENT

3 June 2026



Hole No	East	North	From	To	Grade (Au g/t)	Interval (m)	Prospect	Hole Type
CWA734	339170	6790857	42	48	0.90	6	Paradise North	AC
HWRC007	339697	6778878	69	70	0.90	1	Pelican	RC
ECDD0005	337818	6794420	344.82	345.21	0.89	0.39	Elcapitan	DD
HWA106	339897	6778778	49	50	0.89	1	Pelican	AC
GS16RC009	337280	6793274	96	100	0.86	4	Annapurna	RC
PD16RC001	339328	6791203	73	74	0.86	1	Paradise North	RC
RRC0042	347267	6797575	10	11	0.86	1	Raeside	RC
MEA278	338600	6789061	24	26	0.85	2	Melita	AC
HWRC017	339942	6779049	8	12	0.85	4	Pelican	RC
GGDD0011	337719	6796415	263.42	263.82	0.84	0.4	Annapurna	DD
MBC456	336314	6790699	43	44	0.84	1	Central Well	RC
RRC0042	347267	6797575	31	33	0.84	2	Raeside	RC
HWA123	339977	6778778	64	67	0.83	3	Pelican	AC
CWA316	338160	6792337	63	66	0.82	3	Central Well	AC
CWC779	337191	6793119	193	194	0.82	1	Annapurna	RC
HWA075	339750	6779879	36	37	0.82	1	Desdemona	AC
CWC766	337447	6794206	116	117	0.81	1	Annapurna	RC
HWA104	339737	6778778	25	26	0.81	1	Pelican	AC
ECDD0005	337818	6794420	242.77	243.77	0.80	1	Elcapitan	DD
HWRC007	339697	6778878	39	40	0.80	1	Pelican	RC
MER367	338770	6789475	30	33	0.79	3	Melita	RAB
MEC450	338844	6789497	62	63	0.77	1	Melita	RC
21DSAC0172	340017	6778444	12	13	0.77	1	Pelican	AC
HWRC016	339913	6779079	78	80	0.76	2	Pelican	RC
HWRC018	339971	6779021	44	50	0.76	6	Pelican	RC
21DSAC0185	337418	6776956	69	70	0.76	1	Egret	AC
MEC449	338905	6789702	75	76	0.75	1	Melita	RC
RRC0043	347296	6797603	29	30	0.75	1	Raeside	RC
CWA506	336566	6796331	99	102	0.75	3	Central Well	AC
HWA077	339752	6779797	41	43	0.75	2	Central Well	AC
CWC766	337447	6794206	74	75	0.74	1	Annapurna	RC
GGDD0011	337719	6796415	180.51	181	0.74	0.49	Annapurna	DD
HWA120	339497	6778858	65	66	0.74	1	Pelican	AC
RRC0038	347155	6797799	66	68	0.74	2	Raeside	RC
CWC766	337447	6794206	104	105	0.73	1	Annapurna	RC
MER422	338806	6789678	36	39	0.73	3	Melita	RAB
RRC0042	347267	6797575	36	37	0.73	1	Raeside	RC

**ASX ANNOUNCEMENT**

3 June 2026



Hole No	East	North	From	To	Grade (Au g/t)	Interval (m)	Prospect	Hole Type
CWC764	337561	6794415	122	123	0.72	1	Annapurna	RC
ECDD0004	337517	6793431	261.69	262.31	0.72	0.62	Elcapitan	DD
HWRC014	339808	6778947	79	80	0.72	1	Pelican	RC
ECDD0002	337625	6793803	290	290.54	0.71	0.54	Elcapitan	DD
HWA104	339737	6778778	44	48	0.71	4	Pelican	AC
PL14RC003	339943	6779059	128	129	0.71	1	Pelican	RC
CWA221	336454	6795120	102	104	0.71	2	Central Well	AC
SGP019	338584	6788859	29	30	0.70	1	Desdemona	RC
SGP019	338584	6788859	31	32	0.70	1	Desdemona	RC
MEC448	339578	6789952	63	64	0.70	1	Melita	RC
CWA237	337509	6794395	36	39	0.70	3	Annapurna	AC
OWP011	338610	6789262	27	28	0.69	1	Desdemona	RC
ECDD0006	337419	6793122	327.1	328	0.69	0.9	Elcapitan	DD
MEA261	339039	6790596	33	36	0.69	3	Paradise North	AC
ECDD0006	337419	6793122	319.3	320.98	0.68	1.68	Elcapitan	DD
OWP002	338730	6789672	47	48	0.68	1	Desdemona	RC
MEC448	339578	6789952	65	67	0.68	2	Melita	RC
CWD776	337422	6793786	170	171	0.67	1	Annapurna	DD
ECDD0005	337818	6794420	294.93	295.93	0.67	1	Elcapitan	DD
CWC768	339347	6791038	30	31	0.67	1	Paradise North	RC
HWRC003	339796	6778858	48	50	0.67	2	Pelican	RC
GS16RC008	337635	6793300	93	94	0.66	1	Gwalia_South	RC
HWA106	339897	6778778	25	26	0.66	1	Pelican	AC
RRC0042	347267	6797575	22	24	0.65	2	Raeside	RC
OWD004	338830	6789679	51	53	0.65	2	Desdemona	DD
MEC452	338735	6789288	18	20	0.65	2	Melita	RC
CWA633	337298	6793979	104	107	0.64	3	Annapurna	AC
SGP021	338546	6789107	46	47	0.64	1	Desdemona	RC
HWA039	339917	6778842	48	49	0.64	1	Pelican	AC
CWA573	339758	6791050	24	27	0.63	3	Himalayas	AC
CWA644	336439	6795320	98	101	0.63	3	Central Well	AC
CWA728	339409	6791025	51	54	0.63	3	Paradise North	AC
PD16RC002	339332	6791103	75	76	0.63	1	Paradise North	RC
HWRC009	339697	6778858	29	30	0.63	1	Pelican	RC
HWRC010	339723	6779032	82	83	0.63	1	Pelican	RC
CWA079	336579	6790918	31	33	0.63	2	Central Well	AC
MBC456	336314	6790699	89	90	0.63	1	Central Well	RC

**ASX ANNOUNCEMENT**

3 June 2026



Hole No	East	North	From	To	Grade (Au g/t)	Interval (m)	Prospect	Hole Type
GGDD0011	337719	6796415	160.91	162	0.62	1.09	Annapurna	DD
HWA171	339337	6779658	36	40	0.62	4	Central Well	AC
OWD001	338681	6789668	89	90	0.62	1	Desdemona	DD
OWP002	338730	6789672	43	44	0.62	1	Desdemona	RC
OWP010	338759	6789273	65	66	0.62	1	Desdemona	RC
HWA130	339577	6779018	17	18	0.62	1	Pelican	AC
20DSAC019	337809	6780095	48	49	0.62	1	Hotspot	AC
CWA626	337253	6793775	104	107	0.61	3	Annapurna	AC
CWC786	337197	6793168	185	186	0.61	1	Annapurna	RC
ECDD0001	337518	6793792	235.13	235.48	0.61	0.35	Annapurna	DD
HWA167	339577	6779498	3	6	0.61	3	Central Well	AC
HWA120	339497	6778858	48	52	0.61	4	Pelican	AC
MBA422	336282	6790596	51	54	0.60	3	Central Well	AC
CWC778	337548	6794198	81	82	0.60	1	Annapurna	RC
CWC785	337117	6793162	128	129	0.60	1	Annapurna	RC
HWA185	339497	6779578	44	48	0.60	4	Central Well	AC
HWA205	337417	6777358	66	67	0.60	1	Central Well	AC
ECDD0005	337818	6794420	281.17	281.61	0.60	0.44	Elcapitan	DD
MER367	338770	6789475	36	38	0.60	2	Melita	RAB
PD16RC002	339332	6791103	69	70	0.60	1	Paradise North	RC
CWA021	336991	6793254	34	35	0.59	1	Annapurna	AC
MBA144	336420	6790907	28	30	0.59	2	Desdemona	AC
CWC773	339209	6790727	79	80	0.59	1	Paradise North	RC
HWRC005	339677	6778838	49	50	0.59	1	Pelican	RC
HWRC013	339777	6778975	61	62	0.59	1	Pelican	RC
HWA124	340057	6778938	7	9	0.59	2	Pelican	AC
OWP010	338759	6789273	43	44	0.57	1	Desdemona	RC
ECDD0002	337625	6793803	409.13	409.45	0.57	0.32	Elcapitan	DD
OWP016	338544	6788856	13	14	0.56	1	Desdemona	RC
HWRC008	339697	6778858	47	48	0.56	1	Pelican	RC
21DSAC0095	337165	6780157	71	72	0.56	1	Hotspot	AC
CWC778	337548	6794198	105	106	0.55	1	Annapurna	RC
CWA649	336424	6795519	98	100	0.55	2	Central Well	AC
HWA059	340179	6779697	48	49	0.55	1	Central Well	AC
HWA076	339751	6779838	37	38	0.55	1	Desdemona	AC
HWRC014	339808	6778947	70	71	0.55	1	Pelican	RC
HWRC021	340076	6779162	42	44	0.55	2	Pelican	RC

**ASX ANNOUNCEMENT**

3 June 2026



Hole No	East	North	From	To	Grade (Au g/t)	Interval (m)	Prospect	Hole Type
ECDD0005	337818	6794420	466	467	0.54	1	Elcapitan	DD
MER9739	343557	6781782	10	18	0.54	8	Melita	RAB
MER432	339410	6790323	21	24	0.54	3	Paradise North	RAB
CWC766	337447	6794206	99	100	0.53	1	Annapurna	RC
RGRAC0656	347078	6797725	12	15	0.53	3	MchIngl	AC
HWRC018	339971	6779021	62	64	0.53	2	Pelican	RC
MBA151	335300	6789622	60	61	0.53	1	Desdemona	AC
CWC785	337117	6793162	89	90	0.52	1	Annapurna	RC
OWP005	339578	6789734	27	28	0.52	1	Desdemona	RC
ECDD0004	337517	6793431	398.55	399.05	0.52	0.5	Elcapitan	DD
ECDD0005	337818	6794420	211.65	212.22	0.52	0.57	Elcapitan	DD
HWRC024	340157	6779079	40	44	0.52	4	Pelican	RC
HWRC025	340228	6779239	94	96	0.52	2	Pelican	RC
PL14RC003	339943	6779059	60	61	0.52	1	Pelican	RC
RRC0029	347232	6797584	28	29	0.52	1	Raeside	RC
MBA441	336225	6790693	33	36	0.51	3	Central Well	AC
ECDD0004	337517	6793431	249.72	250.38	0.51	0.66	Elcapitan	DD
RRC0015	346584	6797798	27	28	0.51	1	MchIngl	RC
MER397	338365	6788844	9	12	0.51	3	Melita	RAB
MER409	338486	6789253	36	38	0.51	2	Melita	RAB
CWA238	337409	6794387	36	39	0.50	3	Annapurna	AC
CWC764	337561	6794415	119	120	0.50	1	Annapurna	RC
CWC782	337642	6794405	201	202	0.50	1	Annapurna	RC
CWC784	337058	6793118	90	93	0.50	3	Annapurna	RC
OWP017	340112	6788670	76	77	0.50	1	Desdemona	RC
ECDD0004	337517	6793431	212.09	212.5	0.50	0.41	Elcapitan	DD
PD16RC005	339094	6790549	45	46	0.50	1	Paradise North	RC
HWRC006	339717	6778838	53	54	0.50	1	Pelican	RC