

RESOURCE UPGRADE DRILL PROGRAM UNDERWAY AT SUNNYSIDE

HIGHLIGHTS

- A nine-hole, 2,180m diamond drilling program has commenced at the high-grade and fully permitted Sunnyside deposit, being the first program in connection with Rokeby's proposed acquisition of the Omeo Gold Project in north-east Victoria which remains subject to completion of the conditions precedent.
- Omeo is underpinned by a **Historical Estimate of 2.4 Mt at 4.02 g/t Au for 320,000 ounces of gold** (Table 2).
- The Sunnyside deposit hosts outstanding historical intercepts, including **15.9 m @ 52.3 g/t Au (SSDH017)** and **0.8 m @ 238.5 g/t Au (SSDH026)**, demonstrating exciting resource growth potential (Table 1).
- **Mineralisation has yet to be closed off along the 5.8 km mineralised zone**, with the Sunnyside deposit a high-priority target.
- Drilling is targeting known high-grade mineralisation shoots, and results are expected to underpin a JORC (2012) resource estimate and guide an expanded drilling program across Mt Wills, integrating the Maude and Sunnyside area.
- Assay results are expected in the next four to six weeks.

Rokeby Resources Limited (ASX: RKB) ("**Rokeby**" or "**the Company**") is pleased to announce the commencement of a nine-hole, 2,180m diamond drilling program at the Sunnyside Deposit, within the high-grade Omeo Gold Project in north-east Victoria. The drilling program has been commenced by Tiger Tasman Minerals Limited ("**Tiger Tasman**") in anticipation of the completion of Rokeby's acquisition of the Omeo Gold Project. Completion of the acquisition remains subject to satisfaction of the conditions precedent, as outlined in the Company's transaction announcement on 24 April 2026.

The program is designed to upgrade the current Historical Estimate of 2.4 Mt at 4.02 g/t Au for 320,000 ounces of gold (Table 1) and is targeting:

- Down plunge extensions of known high-grade mineralisation zones defined by historical drilling;
- Improving definition within the resource envelope;
- Testing beneath and along strike from previously intersected shoots. Test extensions of the steeply dipping lodes;

Sunnyside represents one of the most advanced and highest priority targets within the Mt Wills area.

Commenting on the 2026 exploration program, proposed Managing Director Richard Beazley said:

"The commencement of drilling at Sunnyside is an exciting development in connection with our proposed acquisition of the Omeo Gold Project, a unique and high-grade gold asset. We have taken a disciplined and measured approach throughout this process, which gives us strong conviction in both the quality and scale of this opportunity.

"As a result, we are well-prepared for execution of our initial drilling program at Omeo, with the foundations in place to move efficiently and at pace. The rapid commencement of drilling reflects not only our confidence in the asset but also our readiness to unlock its value. Rokeby's in-house technical expertise ensures that we can leverage our existing technical capability to ensure efficient integration and capital deployment.

"Drilling is underway at Sunnyside for the first time in 13 years, and the program is designed to validate one of Victoria's most compelling high-grade gold opportunities and deliver the data required for a resource estimate in accordance with JORC (2012) later this year. I look forward to providing further updates as drilling progresses."



Figure 1: Cortech Rig drilling 25SSDH001

Details of Drill program

Two holes are designed to test the up/down plunge extension of the 15.9m @ 52.3 g/t Au intersected in SSDH017, with the first hole in the program designed to twin SSDH017 to confirm mineralisation.

One hole is designed to test the down plunge of mineralisation in SSDH001.

One hole is designed to test the down plunge of mineralisation in SSDH040.

Two holes are designed to test around the high grade zone of the 3.3m @ 17.6 g/t Au from 198m intersected in SSDH045.

Two holes are designed to test around the high grade zone of the 3.5m @ 26.6 g/t Au from 164.1m intersected in SSDH053.

Total program planned consists of 9 holes for 2180m.

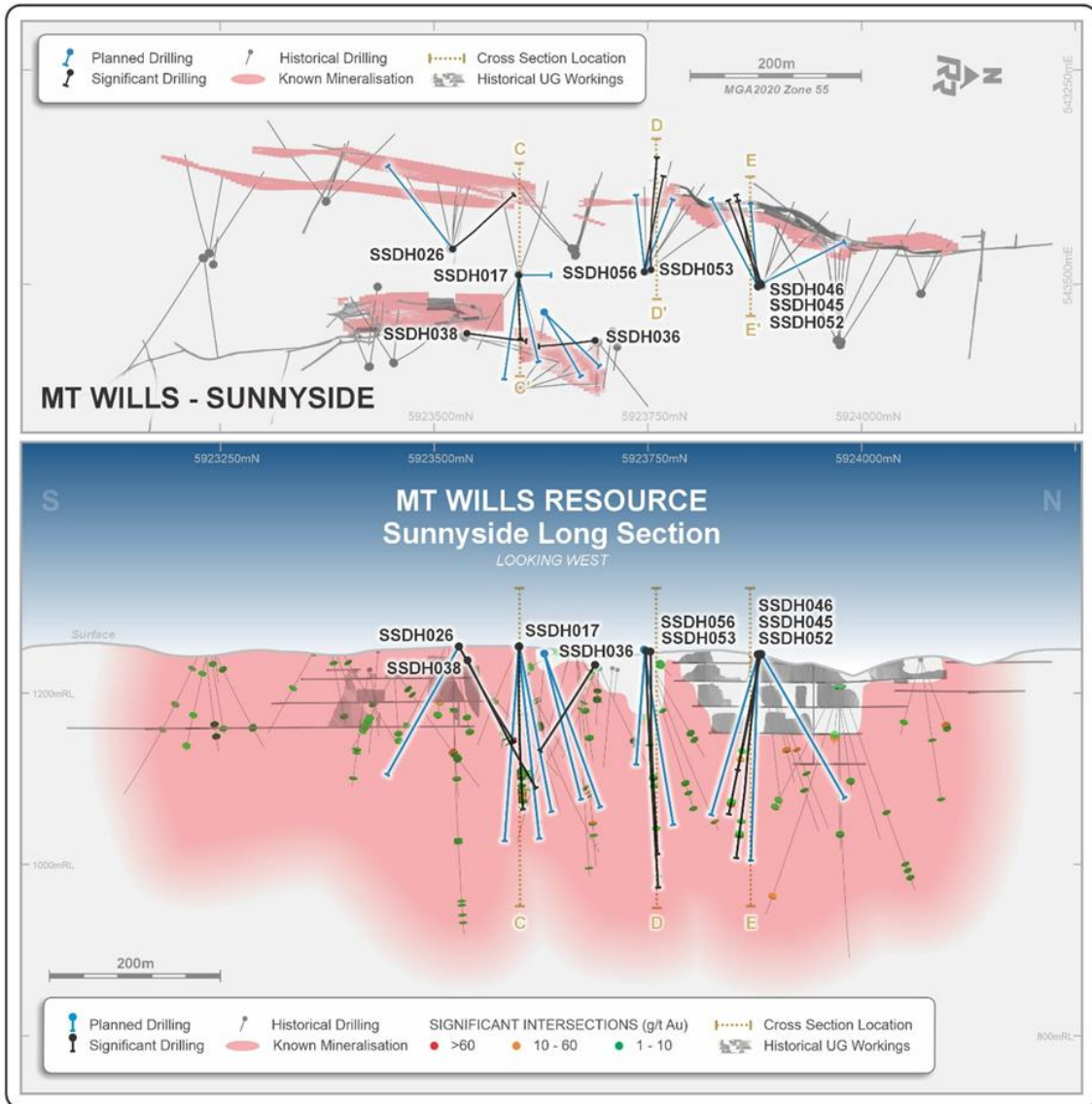


Figure 2: Plan view and long section of the Sunnyside resource showing the planned drilling that has commenced. Note that 6 high grade shoots are being tested in this program

ABOUT THE OMEO GOLD PROJECT

The Omeo Gold Project lies approximately five hours north-east of Melbourne and includes two distinct tenement areas: Mt Wills (EL 6323 and one of Victoria’s longest continually granted mining leases, MIN 4921) and Cassilis (EL 5504 and EL 5427). The Mt Wills area hosts a historical resource of **2,456,000 tonnes @ 4.0g/t Au for 320,000 ounces of gold** (Table 2) across the Maude and Sunnyside deposits, remaining open along strike and at depth. Historical mining in the area produced more than **235,000 ounces of gold at grades exceeding 18g/t**.

Sunnyside is fully permitted and ready for drilling, with multiple historical intersections confirming strong vertical continuity and ultra-high-grade shoots. Significant intercepts include (Table 1):

- 15.9m @ 52.3 g/t Au (SSDH017)
- 0.8m @ 238.5 g/t Au (SSDH026)
- 3.55m @ 26.6 g/t Au (SSDH053)
- 3.3m @ 17.6 g/t Au (SSDH045)

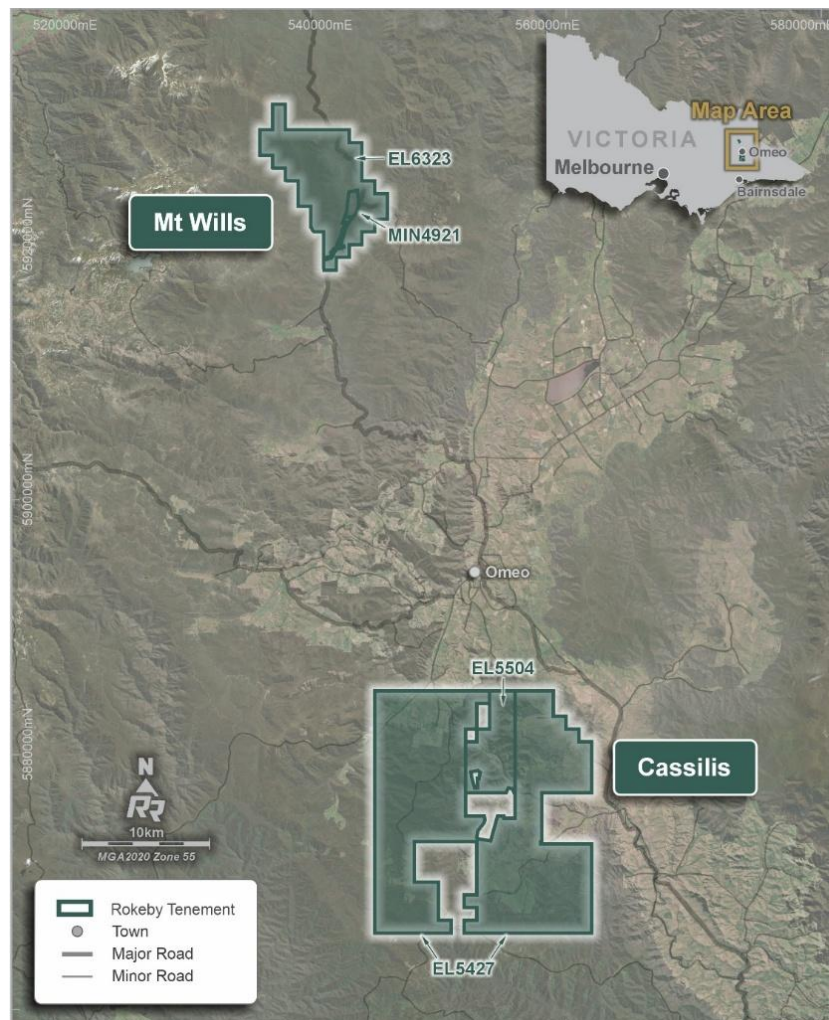


Figure 3: Location of the Omeo Gold Project

PLANNED NEXT STEPS

- Complete planned ~2,000m of initial drilling at the Sunnyside deposit
- Receive and report assays progressively (estimated to be received in four to six weeks).
- Commence JORC (2012) resource estimation in H2 2026.

HISTORICAL RESULTS THAT UNDERPIN THIS RELEASE

Table 1: Historical drill results released by the previous operator of the Omeo Gold Project.

HOLE	From	To	Length**	Au g/t	Ag g/t	SUMMARY***	Schedule 1 Reference
Maude Area							
GWDH023	177.1	182.9	5.8	18.9	NS*	6m @ 18.9g/t Au	1
GWDH024	220.7	232.6	11.9	8.86	NS*	12m @ 8.86/t Au	2
GWDH037	89	94.2	5.2	5.46	NS*	5m @ 5.4 g/t Au	3
GWDH038	80.7	83	2.3	31.17	NS*	2.3m @ 31.1 g/t Au	13
MSUGDH028	114.2	119.2	5	13.78	NS*	5m @ 13.8/t Au	4
MSUGDH046	200.5	211.6	11.1	13.31	8.54	11m @ 13.3 g/t Au 8.54 g/t Ag	5
MSUGDH048 <i>incl</i>	129.65 129.65	136.85 131.2	7.2 1.55	15.11 61.53	60.39 221.42	7.2m @ 15.11 g/t Au 60.39 g/t Ag	6
MSUGDH049 <i>incl</i> <i>incl</i> <i>incl</i>	215.0 216.5 222.85 227	230.7 218.35 225.55 228	15.7 1.85 2.7 1.0	6.69 10.73 21.43 7.56	125.8 16.1 452.33 61.45	15.7m @ 6.7 g/t Au 95.4 g/t Ag	6
Sunnyside Area							
SSDH017 <i>incl</i> <i>incl</i> <i>incl</i>	190.2 196.5 196.8 204.8	206.1 196.8 197.2 206.1	15.9 0.3 0.4 1.3	52.36 150.0 900.0 243.4	NS*	15.9m @ 52.3 g/t Au	7
SSDH026	152.6	153.4	0.8	208.9	NS*	0.8m @ 208.9 g/t Au	8
SSDH038 <i>incl</i> <i>incl</i>	147.9 147.9 151.1	153.1 148.06 151.7	5.2 0.16 0.6	17.39 406.5 28.71	NS*	5.2m @ 17.39g/t Au	9
SSDH040 <i>incl</i> <i>incl</i> <i>incl</i>	159 160.6 166 169.9	173.5 161.75 167 171.55	14.5 1.15 1.0 1.65	10.13 26.51 17.68 57.44	NS*	14.5m @ 10.13g/t Au	10
SSDH045 <i>incl</i> <i>incl</i>	198 198 200.5	201.3 199 201.3	3.3 1.0 0.8	17.63 27.92 33.77	NS*	3.3m @ 17.63 g/t Au	16
SSDH052	230.4	233.6	3.5	8.18	NS*	3.5m @ 8.37 g/t Au	12
SSDH053 <i>incl</i>	164.5 164.5	167.6 165.7	3.1 1.2	39.56 100.28	NS*	3.1m @ 39.56 g/t Au	12

* NS = not sampled for Silver

** All intersections are reported as downhole lengths; true widths have not been determined

*** No lower or upper cut-offs have been applied to these results and results have been released in full

The exploration results referenced in Table 1 above, and elsewhere in this announcement, were originally reported under JORC Code (2004) and have not been updated to comply with JORC Code (2012). They should not be relied upon as JORC (2012) compliant. The Company is not aware of any new information or data that materially affects those results.

MT WILLIS HISTORICAL MINERAL RESOURCE ESTIMATE

Table 2: Historical Resource Estimate and Classification.

Deposit	Class	Tonnes (kt)	Au (g/t)	Au (koz)
Maude	Indicated	414	5.2	69
	Inferred	999	3.5	112
Sunnyside	Indicated	113	8.8	32
	Inferred	930	3.5	106
Total	Indicated	527	6.0	101
	Inferred	1,929	3.5	218
Total		2,456	4.0	320

Cautionary Statement

The estimates set out in Table 2 are historical estimates and are not reported in accordance with the JORC Code. A competent person has not done sufficient work to classify the historical estimate as mineral resources or ore reserves in accordance with the JORC Code, and it is uncertain that, following evaluation and/or further exploration work, the historical estimates will be able to be reported as mineral resources or ore reserves in accordance with the JORC Code.

The Company is not in possession of any new information or data relating to the historical estimate that materially impacts on the reliability of the estimate or the Company's ability to verify the historical estimate as mineral resources in accordance with ASX LR Appendix 5A. The Company confirms that the supporting information provided in the initial market announcement made on 24 April 2026 continues to apply and has not materially changed.

Please refer to the announcement dated 24 April 2026 for further information on the acquisition of the Omeo Gold Project.

Authorised for release by the Board of Rokeby Resources Limited.

Investor Enquiries:

Richard Beazley
Proposed Managing Director
+61 (8) 6263 4738
Info@rokebyresources.com.au

Media:

Annalise Batchelor
Sodali & Co.
+61 432 312 806
annlise.batchelor@sodali.com

COMPETENT PERSON STATEMENT

Information in this ASX announcement that relates to previously reported Exploration Results has been cross-referenced in this report to the date that it was reported to ASX. Rokeby Resources Limited confirms that it is not aware of any new information or data that materially affects information included in the relevant market announcements.

The information in this ASX announcement that relates to Historical Resource Estimates has been reviewed by Mr Mathew Perrot, who is a Member of The Australian Institute of Geoscientists (MAIG, RPGeo). Mr Perrot has sufficient experience relevant to the exploration activities, style of mineralisation and types of deposits under consideration to qualify as a Competent Person as defined in the 2012 Edition of the Australasian Code for Reporting of Exploration Results, Mineral Resources and Ore Reserves. Mr Perrot is a full-time employee of Rokeby Resources Limited. Mr Perrot consents to the inclusion of the matters based on this information in the form and context in which they appear.

The information in this report that relates to previously reported Exploration Results is extracted from ASX announcements as set out in Schedule 1 to this announcement and separately referenced in the body of this announcement. The Company confirms that it is not aware of any new information or data that materially affects the information included in the original announcements.

The announcements referred to in Schedule 1 were prepared and first disclosed under the JORC Code (2004) and have not been updated to JORC (2012) and, therefore, should not be relied upon as compliant with the current JORC (2012) code.

FORWARD LOOKING STATEMENTS

This announcement contains forward-looking statements. Forward-looking statements are often, but not always, identified by the use of words such as "seek", "anticipate", "plan", "continue", "estimate", "expect", "may", "will", "project", "predict", "potential", "targeting", "intend", "could", "might", "should", "believe" and similar expressions. These statements involve known and unknown risks, uncertainties and other factors that may cause actual results, performance or achievements to differ materially from those expressed or implied by such forward-looking statements. Forward-looking statements should not be relied upon as a guarantee or representation of future events or results. In particular, statements regarding the potential to grow or upgrade the Historical Mineral Resource Estimate, exploration targets and planned work programs are subject to the cautionary statements set out in this announcement and there is no guarantee that exploration will result in the definition of a mineral resource in accordance with the JORC Code.

SCHEDULE 1 – REFERENCES AND PAST ASX ANNOUNCEMENTS REFERRED TO IN THIS ANNOUNCEMENT

REFERENCES

Crohn, P.W. 1958 "Bulletin 56 Geology of the Glen Wills and Sunnyside Goldfields", Mines Department, Victoria, Australia.

ASX announcements referred to in this release:

1. GWDH023: refer to ASX announcement Synergy Metals Ltd (ASX: SML) "High grade gold discovered at Glen Wills Gold Project" 15 January 2005, sourced <https://announcements.asx.com.au/asxpdf/20050429/pdf/3qq3qhybw5lqh.pdf>
2. GWDH024: refer to ASX announcement Synergy Metals Ltd (ASX: SML) "Further Substantial High Grade Gold Intersected at Glen Wills" 10 March 2005, sourced <https://announcements.asx.com.au/asxpdf/20050310/pdf/3q2qjjzwh4t8h.pdf>
3. GWDH037: refer to ASX announcement Synergy Metals Ltd (ASX: SML) "Encouraging Results at Glen Wills Confirm Northern Extension" 23 July 2007, sourced <https://announcements.asx.com.au/asxpdf/20070723/pdf/313kd0dbhds0mm.pdf>
4. MSUGDH028: refer to ASX announcement Synergy Metals Ltd (ASX: SML) "Report for the December 2008 quarter" 30 January 2009, sourced <https://announcements.asx.com.au/asxpdf/20090130/pdf/31fthctwgq2s0f.pdf>
5. MSUGDH046: refer to ASX announcement Synergy Metals Ltd (ASX: SML) "Underground Results Continue to Impress" 17 May 2012, sourced <https://announcements.asx.com.au/asxpdf/20120517/pdf/426b47r40n2w05.pdf>
6. MSUGDH048 and MSUGDH049: refer to ASX announcement Synergy Metals Ltd (ASX: SML) "Further Success from Underground Drill Program" 15 June 2012, sourced <https://announcements.asx.com.au/asxpdf/20120615/pdf/426v7n50c7l04d.pdf>
7. SSDH017: refer to ASX announcement Synergy Metals Ltd (ASX: SML) "Special Announcement – Sunnyside Drilling Results" 21 June 2005, sourced <https://announcements.asx.com.au/asxpdf/20050622/pdf/3r8xxtnj6c74t.pdf>
8. SSDH026: refer to ASX announcement Synergy Metals Ltd (ASX: SML) "More high-grade hits at Sunnyside Gold Project", 4 October 2005, sourced <https://announcements.asx.com.au/asxpdf/20051004/pdf/3sm5lhhsf9vlj.pdf>
9. SSDH038: refer to ASX announcement Synergy Metals (ASX: SML) "High grade mineralised structure confirmed at Sunnyside", 13 December 2007, sourced <https://announcements.asx.com.au/asxpdf/20071213/pdf/316g69z0hh1rhj.pdf>
10. SSDH040: refer to ASX announcement Synergy Metals (ASX: SML) "Sunnyside - high grade intersection confirmed" 14 February 2008, sourced <https://announcements.asx.com.au/asxpdf/20080214/pdf/317fxc9jqb14b0.pdf>

11. SSDH046: refer to ASX announcement Synergy Metals (ASX: SML) "Report for the June 2008 quarter" 31 July 2008, sourced
<https://announcements.asx.com.au/asxpdf/20080731/pdf/31bg8xzf78srqp.pdf>
12. SSDH052, 053: refer to ASX announcement Synergy Metals (ASX: SML) "Report for the December 2008 quarter" 30 January 2009, sourced
<https://announcements.asx.com.au/asxpdf/20090130/pdf/31fthctwgq2s0f.pdf>
13. GWDH038: refer to ASX announcement Synergy Metals Ltd (ASX: SML) "Encouraging Results at Glen Wills Confirm Northern Extension", 23 July 2007, sourced
<https://announcements.asx.com.au/asxpdf/20070723/pdf/313kd0dbhds0mm.pdf>
14. MSUGDH047: refer to ASX announcement Synergy Metals Ltd (ASX: SML) "Further Success from Underground Drill Program", 15th June 2012, sourced
<https://announcements.asx.com.au/asxpdf/20120615/pdf/426v7n50c7l04d.pdf>
15. MSUGDH052, 053: refer to ASX announcement Synergy Metals Ltd (ASX:SML) "Glen Wills Goldfield Drilling - Final 2012 drilling programme Assay Results", 3 October 2012, sourced
<https://announcements.asx.com.au/asxpdf/20121003/pdf/429440m6dggf8vm.pdf>
16. SSDH045: refer to ASX announcement Synergy Metals (ASX: SML) "Positive assay results received", 27 May 2008, sourced
<https://announcements.asx.com.au/asxpdf/20080527/pdf/319b6z1rnpqk24.pdf>