

## CSIRO Commences On-Site Work at Mt Carrington

### Field campaign underway under CSIRO Kick-Start grant collaboration

Legacy Minerals Holdings Limited (ASX: LGM, "LGM", "the Company" or "Legacy Minerals") is pleased to advise that the CSIRO is on site at the Company's flagship Mt Carrington Project (EL6273, EL9616, EL9727, ALA75) progressing field activities under the collaborative research Project<sup>i</sup>.

#### Highlights

- The CSIRO team is on site at Mt Carrington undertaking a multi-week field campaign as part of the collaborative research project supported by the CSIRO Kick-Start Program<sup>i</sup>.
- On-site activities currently underway include structural logging of oriented drill core and the selection and collection of drill core and RC chip samples for subsequent SEM-TIMA<sup>ii</sup> and LIBS<sup>iii</sup> analysis.
- Work is focused on the Strauss, Kylo, Guy Bell and White Rock North deposits, with additional prospect-scale logging and sampling extending to other prospects within the Mt Carrington field.
- Deliverables will be received progressively over approximately the next nine months and are designed to refine targeting, vectoring and extensional drilling priorities at Mt Carrington, which hosts an existing 115Moz AgEq Mineral Resource<sup>iii</sup>.



**Figure 1.** CSIRO and Legacy Minerals personnel on site at Mt Carrington completing structural logging and sample selection on White Rock drill core.

#### Management Comment CEO & Managing Director, Christopher Byrne said:

*"It is excellent to have the CSIRO team on site at Mt Carrington progressing the field component of the collaboration we announced in April. The structural logging and sample selection being completed now sets up the SEM-TIMA, LIBS and MAIA mapper laboratory work to follow, and working alongside CSIRO researchers gives our technical team direct access to analytical techniques that are not typically accessible to junior explorers.*

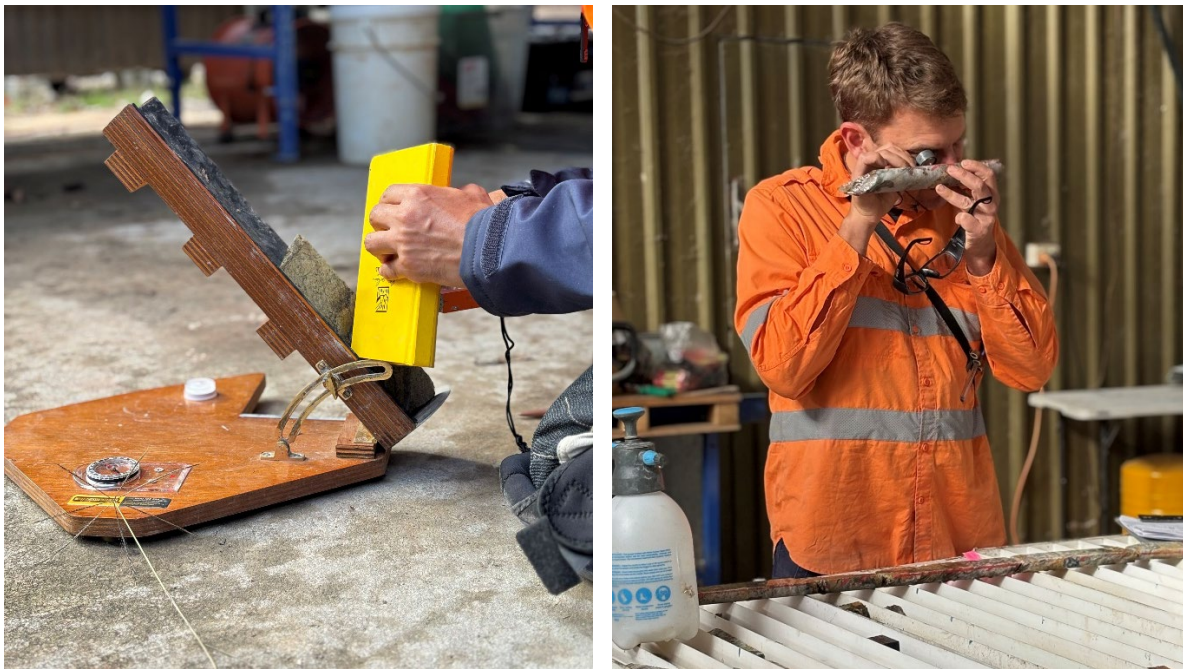
*Pervious drilling and results indicate that this system has the potential for a Tier-1 gold-silver and copper deposit, and the program is designed to improve our understanding of alteration and structural controls on mineralisation. This will sharpen targeting confidence for the next phase of extensional and discovery drilling at Mt Carrington, with results flowing progressively over the coming months."*

### On-Site Activities

The current on-site campaign represents the first field phase of the CSIRO collaboration announced on 23 April 2026<sup>i</sup>. The CSIRO team is working alongside Legacy Minerals' technical personnel to:

- complete structural logging of oriented drill core across the priority deposits, capturing fault, vein and fabric data to support the development of 2D and pseudo-3D structural models; and
- identify and collect representative drill core and chip samples for subsequent SEM-TIMA and LIBS analysis at CSIRO laboratories, including selection of high-grade ore samples for MAIA mapper<sup>ii</sup> scanning.

The activity-set, analytical workflow and program budget remain as described in the Company's 23 April 2026 announcement, with the Kick-Start collaboration retaining a total value of \$196k, inclusive of a \$50,000 matched contribution from the CSIRO Kick-Start Program<sup>i</sup>.



**Figure 2.** CSIRO and Legacy Minerals personnel on site at Mt Carrington completing structural logging and sample selection.

### Kylo-Straus Drill Core<sup>i</sup>

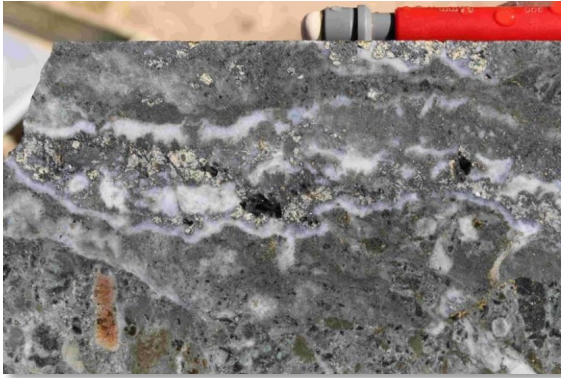


Interpreted porphyry D vein lode comprising quartz-pyrite-chalcopyrite – KYDD001 at 62.5m, **11.9% Cu, 2% Zn.**

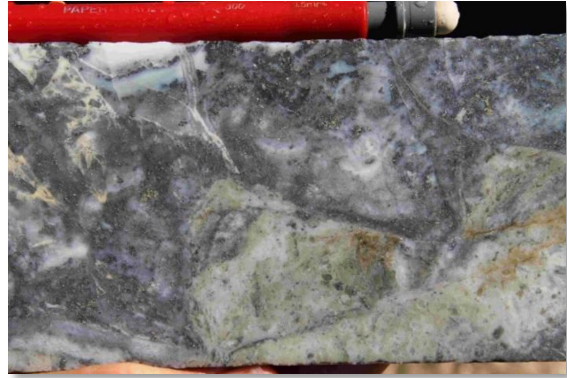


Quartz-sulphide lode in andesite porphyry - KYDD011 at 140.5m, **99.7g/t Au, 3.17% Cu & 231g/t Ag.**

### Red Rock<sup>ii</sup>

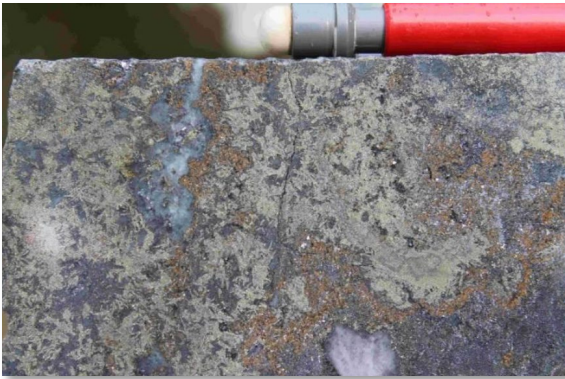


Enlargement of core parallel sigmoidal vein in showing white sphalerite – RRDD005 at 52.5m, **6.6g/t Au & 12.2g/t Ag.**

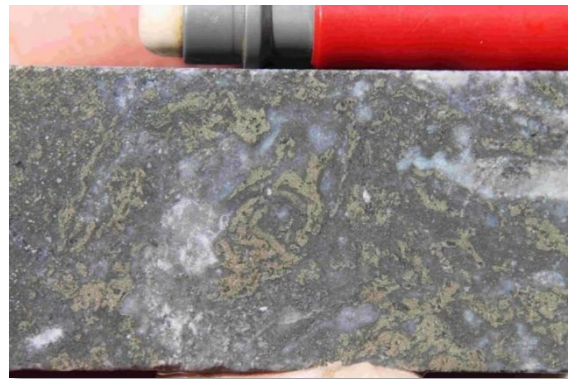


Sulphide fill breccia - RRDD19 at 62.5m, **4.11g/t Au & 6.3g/t Ag.**

### White Rock<sup>ii</sup>



Marcasite overprints red sphalerite WRDD26 at 78.3m, **632g/t Ag.**



Quartz-pyrite breccia – WRDD22 at 42.2m, **529g/t Ag.**

### Next Steps

Samples collected during the on-site campaign will be transferred to the CSIRO facilities for SEM-TIMA, LIBS, p-XRF integration and MAIA mapper analysis. Results, structural interpretation and the 2D / pseudo-3D alteration and structural models are expected to be delivered progressively over approximately the next nine months. The Company will report material outcomes from the program as they become available.

The work continues to support Legacy Minerals' strategic focus on Mt Carrington, complementing the recently released Mt Carrington Scoping Study<sup>iv</sup> by strengthening the targeting framework for the next phase of exploration and extensional drilling.

### About Mt Carrington

The Mt Carrington Project is a district-scale, epithermal gold-silver project located in northern New South Wales, approximately 100km south-south-west of Brisbane, within 393km<sup>2</sup> of granted exploration tenements and an assessment lease application. The project is centred on the Drake Volcanics, where much of the mineralisation occurs within a large circular caldera complex characterised by a low magnetic signature across 150km<sup>2</sup>.

Gold- and silver-dominant deposits at Mt Carrington are interpreted as low-to-intermediate-sulphidation epithermal vein-style mineralisation. Mineralisation occurs as stockwork fissure veins, vein breccias, disseminated zones, lithological controls and bedding-parallel vein structures associated with extensive phyllic to silicic alteration. Veining is also localised along the margins of andesite to rhyolite domes, plugs and lava flows within a sequence dominated by andesitic volcanoclastics.

Regionally, the project sits within the New England Fold Belt, with host rocks comprising a Permian bimodal volcano-sedimentary sequence dominated by andesite and associated volcanoclastics. Basaltic through rhyolitic facies are variably present, together with numerous contemporaneous andesite to rhyolite sub-volcanic intrusions. Mt Carrington hosts a substantial Mineral Resource and continues to offer both resource growth potential around known deposits and discovery upside across the broader district.

### About Legacy Minerals

Legacy Minerals Holdings Limited (ASX: LGM) is an Australian mineral exploration and development company focused on the advancement of its Mt Carrington gold-silver project in New South Wales. The project hosts an existing 115Moz AgEq Mineral Resource and significant exploration upside across a broader district-scale epithermal system. Legacy Minerals' strategy is to grow value through disciplined technical work, targeted drilling and active portfolio management.

Approved by the Managing Director.

### For more information:

#### Investors:

**Chris Byrne**

CEO & Managing Director

[chris.byrne@legacyminerals.com.au](mailto:chris.byrne@legacyminerals.com.au)

+61 (0) 499 527 547

#### Media:

**Nicholas Read**

Read Corporate

[nicholas@readcorporate.com.au](mailto:nicholas@readcorporate.com.au)

+61 (0) 419 929 046

### DISCLAIMER AND PREVIOUSLY REPORTED INFORMATION

Information in this announcement is extracted from reports lodged as market announcements referred to above and available on the Company's website <https://legacyminerals.com.au/>. The Company confirms that it is not aware of any new information that materially affects the information included in the original market announcement and that all material assumptions and technical parameters underpinning the estimates in the relevant market announcement continue to apply and have not materially changed.

This announcement contains certain forward-looking statements. Forward-looking statements are only predictions and are subject to risks, uncertainties and assumptions which are outside of the control of Legacy Minerals Holdings Limited (LGM). These risks, uncertainties and assumptions include commodity prices, currency fluctuations, economic and financial market conditions, environmental risks and legislative, fiscal or regulatory developments, political risks, project delay, approvals and cost estimates. Actual values, results or events may be materially different to those contained in this announcement. Given these uncertainties, readers are cautioned not to place reliance on forward-looking statements. Any forward-looking statements in this announcement reflect the views of LGM only at the date of this announcement. Subject to any continuing obligations under applicable laws and ASX Listing Rules, LGM does not undertake any obligation to update or revise any information or any of the forward-looking statements in this announcement to reflect changes in events, conditions or circumstances on which any forward-looking statements is based.

### COMPETENT PERSON'S STATEMENT

The information in this Report that relates to Exploration Targets, Exploration Results, Mineral Resources or Ore Reserves is based on information compiled by Thomas Wall, a Competent Person who is a Member of the Australian Institute of Geoscientists. Mr Wall is the Technical Director and a full-time employee of Legacy Minerals Pty Limited, the Company's wholly-owned subsidiary, and a shareholder of the Company. Mr Wall has sufficient experience that is relevant to the style of mineralisation and type of deposit under consideration and to the activity being undertaken to qualify as a Competent Person as defined in the 2012 edition of the Australasian Code for Reporting of Exploration Results, Mineral Resources and Ore Reserves. Mr Wall consents to the inclusion of the matters based on this information in the form and context in which it appears in this announcement.

The information in this announcement that relates to the Mineral Resource Estimate and classification of the Mt Carrington Project is based on information compiled by Kate Kitchen, who is a Member of the Australasian Institute of Mining and Metallurgy and a Member of the Australian Institute of Geoscientists. Kate Kitchen is an independent consultant employed full time by Mining Plus Pty Ltd. Kate Kitchen has sufficient experience that is relevant to the style of mineralisation and type of deposit under consideration and to the activity which she is undertaking to qualify as a Competent Person as defined in the 2012 Edition of the Australasian Code for Reporting of Exploration Results, Mineral Resources and Ore Reserves ('the JORC code'). Kate Kitchen consents to the inclusion in the report of the matters based on the information in the form and context in which it appears.

## Appendix A: Mt Carrington AgEq Mineral Resource (See ASX LGM Release dated 13 March 2025 for additional information) <sup>iii</sup>

Prospect	Classification	Resource Tonnes and Grade							Contained Metal					
		Tonnes (Kt)	Au (g/t)	Ag (g/t)	Cu%	Pb%	Zn%	AgEq (g/t)	Au (Koz)	Ag (Koz)	Cu (kt)	Pb (kt)	Zn (kt)	AgEq (Koz)
Strauss	Indicated	2,818	1.1	3.1	0.09	0.07	0.6	149	98	281	3	2	16	13,500
	Inferred	2,026	1	2	0.08	0.04	0.4	130	63	129	2	1	9	8,468
Kylo	Indicated	2,842	1.1	2.1	0.07	0.05	0.4	138	103	191	2	1	11	12,609
	Inferred	2,081	0.6	3.8	0.11	0.06	0.6	101	40	251	2	1	13	6,757
Guy Bell	Inferred	2,512	0.7	2.3	0.16	0.08	0.6	117	58	188	4	2	15	9,449
Carrington	Inferred	2,236	0.5	5.6	0.14	0.08	0.2	83	33	403	3	2	4	5,967
Red Rock	Inferred	8,605	0.5	7.4	0.04	0.12	0.49	84	144	2046	3	10	43	23,239
Lady Hampden	Indicated	2,136	0.71	62	0.01	0.03	0.07	124	49	4251	0	1	2	8,516
	Inferred	2,125	0.74	35	0.01	0.04	0.08	100	51	2388	0	1	2	6,832
Silver King	Indicated	469	0.12	80	0.01	0.03	0.07	93	2	1200	0	0	0	1,402
	Inferred	106	0.05	53	0.01	0.02	0.05	60	0	180	0	0	0	204
Lead Block	Inferred	215	0.21	44	0.01	0.03	0.08	66	2	307	0	0	0	456
White Rock	Indicated	3,135	0.05	66	0.02	0.22	0.73	104	5	6629	1	7	23	10,482
	Inferred	1,051	0.08	37	0.02	0.16	0.62	72	3	1258	0	2	7	2,433
White Rock North	Inferred	2,039	0.05	70	0.01	0.14	0.11	83	4	4592	0	3	2	5,441
Total		34,396						104.7	653	24,294	20	33	146	115,756

The preceding statements of Mineral Resources conform to the Australasian Code for Reporting of Exploration Results, Mineral Resources and Ore Reserves (JORC Code) 2012 Edition. All tonnages reported are dry metric tonnes. Minor differences may occur due to rounding to appropriate significant figures. For White Rock & White Rock North. AgEq calculated using the formula:  $AgEq = Ag + 84.0712 \times Au + 93.2167 \times Cu + 36.0156 \times Zn + 27.0117 \times Pb$  and Recoveries applied are 72% (Au), 71.7% (Ag), 66% (Cu), 85% (Zn) and 85% (Pb). For Kylo, Strauss, & Red Rock AgEq calculated using the formula:  $AgEq = Ag + 101.417 \times Au + 125.477 \times Cu + 35.4288 \times Zn + 28.23323 \times Pb$  and Recoveries applied are 83.1% (Au), 68.6% (Ag), 85% (Cu), 80% (Zn) and 85% (Pb). For Lady Hampden, Silver King, and Lead Block, AgEq calculated using the formula:  $AgEq = Ag + 82.4186 \times Au + 63.0108 \times Cu + 27.0046 \times Zn + 21.5193 \times Pb$  and Recoveries applied are 88.6% (Au), 90% (Ag), 56% (Cu), 80% (Zn) and 85% (Pb). AgEq formula calculated using silver price of \$43/oz, gold price of \$3600/oz, copper price of \$14000/t, zinc price of \$4200/t and the lead price of \$3150/t (all AUD). In the opinion of the Company, all elements included in the metal equivalent calculation have a reasonable potential to be sold and recovered based on current market conditions and metallurgical test work up to 2017.

## Endnotes

---

<sup>i</sup> ASX Release LGM 29 October 2024 *3,050gt Silver and 79gt Gold in Historical Drake Drilling*, ASX Release LGM 2 May 2025 *Amendments - Release 1 May 2025*, Mount Carrington Mines Limited, 17 April 1970, DIGS R00018103, Sixth Annual Report for Period Ending September 15 1992, EL2662 (Drake) CRA Exploration, Prospectus is issued by White Rock Minerals Ltd (“White Rock”) dated 20 August 2010, ASX TMZ Release: 24 October 2022, High Grade Copper Target at Mt Carrington

<sup>ii</sup> LGM ASX Release, 29 October 2024, *3,050gt Silver and 79gt Gold in Historical Drake Drilling*

<sup>iii</sup> LGM ASX Release, 23 April 2026, *CSIRO Grant Awarded and Collaboration with Legacy Minerals to Commence on Mt Carrington*.

<sup>ii</sup> SEM-TIMA (Scanning Electron Microscopy – TESCAN Integrated Mineral Analyser); LIBS (Laser-Induced Breakdown Spectroscopy); MAIA mapper (high-definition X-ray fluorescence microscopy).

<sup>iii</sup> LGM ASX Release, 12 December 2025, *New Silver Targets and Drill Approvals at Mt Carrington*; ASX Release, 13 March 2025, *New Drake Resource of 0.8Moz Gold-Eq and 35Moz Silver-Eq*.

<sup>iv</sup> LGM ASX Release, 4 May 2026, *Study Confirms Compelling Potential of Mt Carrington Project (Scoping Study)*.