

CORELLA RESOURCES

Transformational Entry into the West Arunta

Acquisition of the Chobe Project (WA)



Investor Presentation

ASX:CR9 | May 2026



FOR CONSIDERATION

This presentation has been prepared by Corella Resources ACN 125 943 240 ('CR9' or the 'Company') for the purpose of providing general background information about the Company as at the date of the presentation. It is not intended for distribution to, or use by, any person or entity in any jurisdiction where such distribution or use would be contrary to law or regulation.

This presentation does not constitute investment advice, financial product advice, or a recommendation to acquire shares in the Company. It has been prepared without taking into account the investment objectives, financial situation, or particular needs of any individual. Prospective investors should consider the appropriateness of the information having regard to their own objectives, financial situation, and needs, and seek independent legal, financial, and taxation advice before making any investment decision. This presentation has not been independently verified for reliability, completeness or accuracy. No representation is made that such information and materials are reliable, complete or accurate. The information set out in this presentation does not constitute an offer or invitation to subscribe for securities in The Company or investment in the assets of the Company, or a recommendation by The Company to any person in respect of any matter.

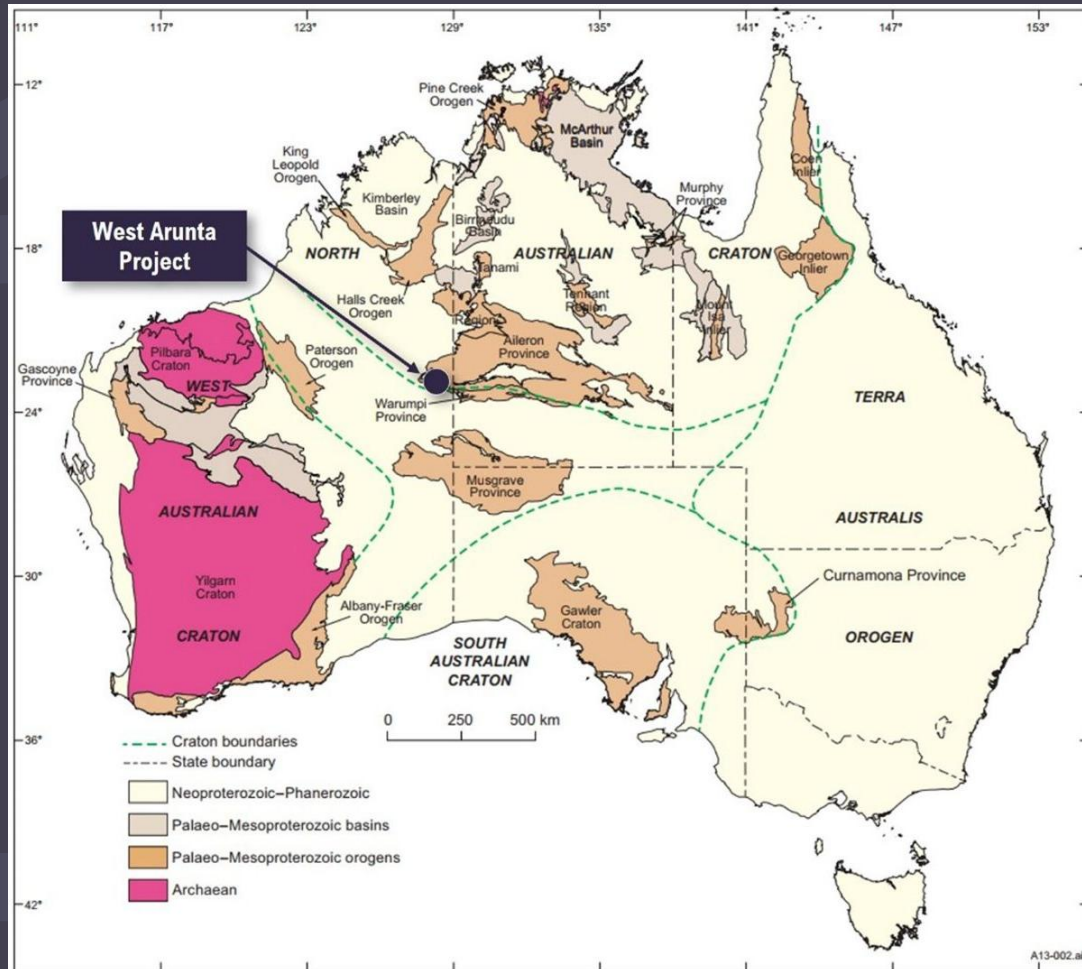
FORWARD LOOKING AND CAUTIONARY STATEMENTS

Forward looking statements, opinions and estimates included in this announcement are based on assumptions and contingencies which are subject to change without notice, as are statements about market and industry trends, which are based on interpretations of current market conditions. Forward looking statements are provided as a general guide only and should not be relied on as a guarantee of future performance. Forward looking statements may be affected by a range of variables that could cause actual results to differ from estimated results, and may cause the Company's actual performance and financial results in future periods to materially differ from any projections of future performance or results expressed or implied by such forward looking statements. The Company cannot and does not give any assurance that the results, performance or achievements expressed or implied by the forward-looking statements

COMPETENT PERSON'S STATEMENT

The information in this announcement that relates to Exploration Results is based on information compiled under the supervision of Nicholas Revell, a technical advisor to Corella Resources Ltd. Mr Revell is a member of the Australian Institute of Geoscientists and has sufficient experience of relevance to the styles of mineralisation and type of deposit under consideration and to the activity which he is undertaking to qualify as a Competent Person as defined in the 2012 Edition of the "Australasian Code for Reporting of Exploration Results, Mineral Resources and Ore Reserves." Mr Revell consents to the inclusion in this announcement of the matters based on his information in the form and context in which they appear.

Strategic Location in Western Australia



Located in the **West Arunta region**
(~490km from Halls Creek)



Positioned within a rapidly
emerging exploration corridor



Access via established regional
routes and exploration tracks



Support from **WA Government**
geoscience initiatives

A Transformational Acquisition In An Emerging Tier-1 Province



Strategic acquisition of the **Chobe Project**,
West Arunta



Exposure to **niobium + rare earth elements (REE), Copper and Gold**



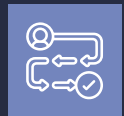
District-scale landholding (Over 2,000km²)



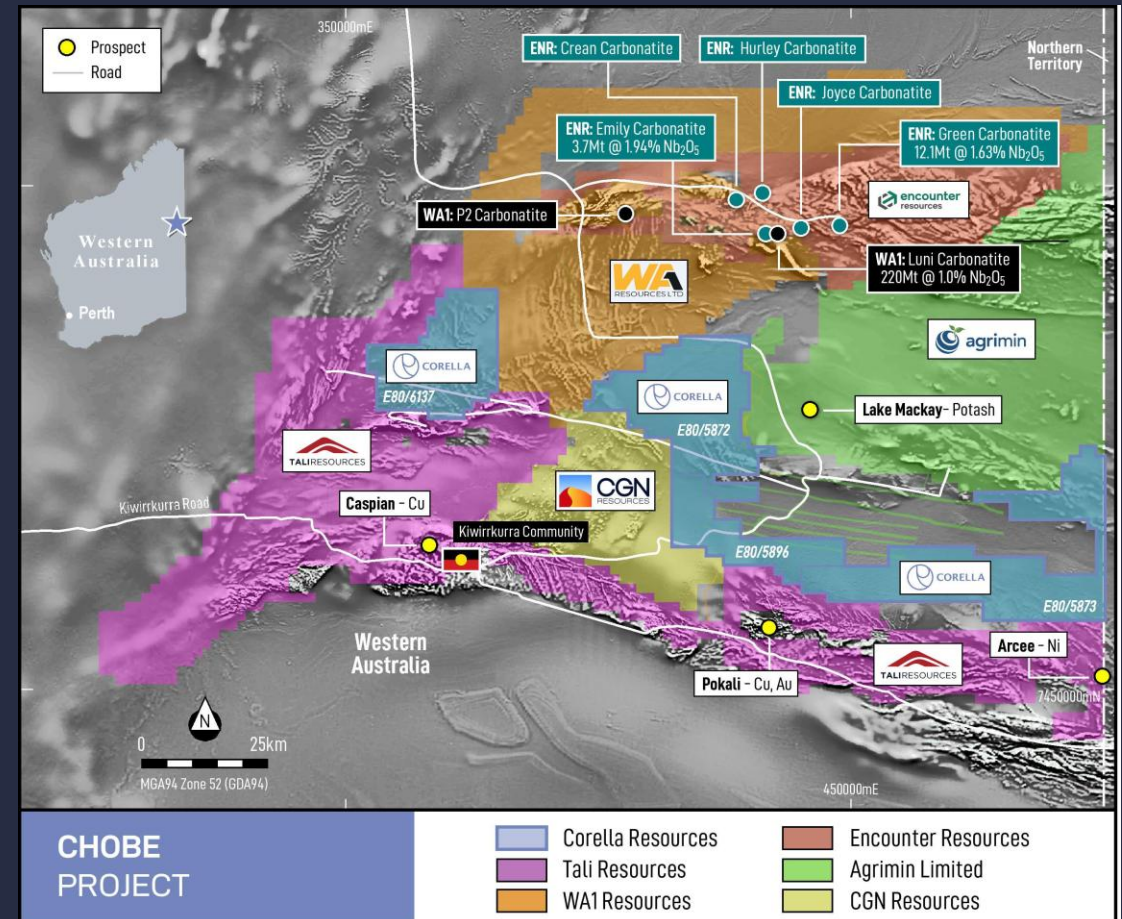
Located within **Australia's most active new exploration frontier**



Strong re-rate potential vs established regional peers



Clear pathway from **target generation** → **drilling** → **discovery**



Underexplored with Significant Upside



Limited historical exploration across tenure

No systematic modern exploration programs

Opportunity to apply **modern geophysics**
+ **targeting techniques**

Clean slate for **first-pass discovery drilling**



Exposure to Critical Minerals

Niobium – critical for steel alloys & emerging technologies

Rare Earth Elements (REE) – essential for electrification & defence

Potential for IOCG-style mineral systems

Strong macro tailwinds supporting demand



EARLY EXPLORATION

West Arunta – Exploration



1

Magnetic survey complete by Government at 100m line spacing, ETA June

2

Additional infill Magnetic survey completed at 50m line spacing – ETA June

3

Results of Mag Survey reviewed by Resource Potential – highly experienced on ground

4

Initial targets generated for follow up ground gravity survey (blue polygons) - named CENTRAL THRUST AREA

5

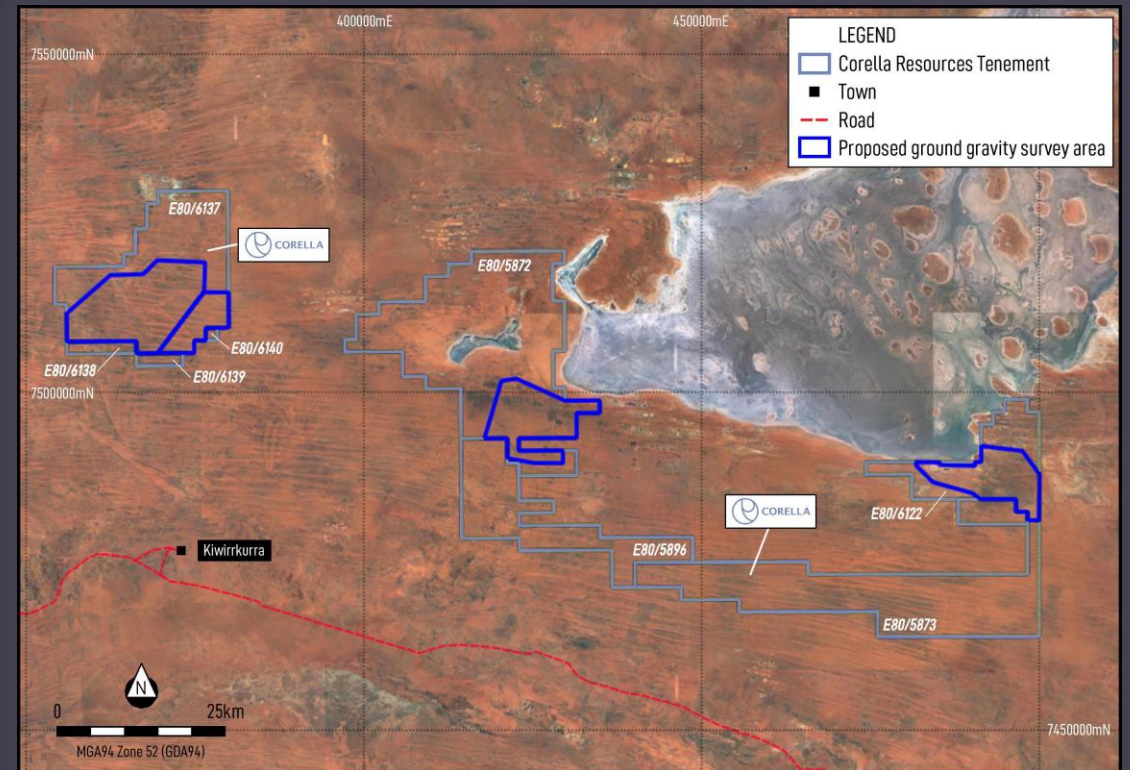
Highly experienced geologist team Atlas Geophysics will be **engaged to commence detailed ground Gravity survey** at \$120k -160k base to further refine targets

6

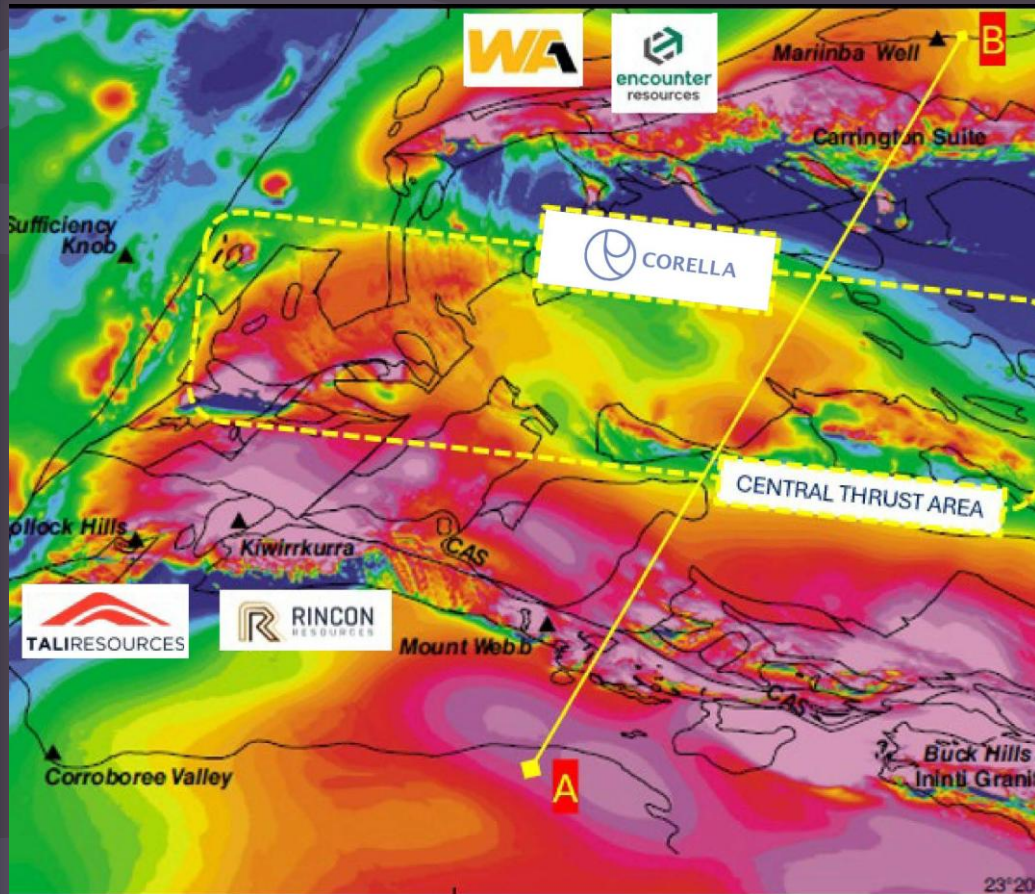
Program of works submitted to Tjamu Tjamu corporation heritage survey manager.

7

Heritage Survey in progress, completed East and West tenements, central tenement will be surveyed shortly



Data-Driven Target Generation



Aeromagnetic survey
expected June 2026



Supported by GSWA
regional datasets

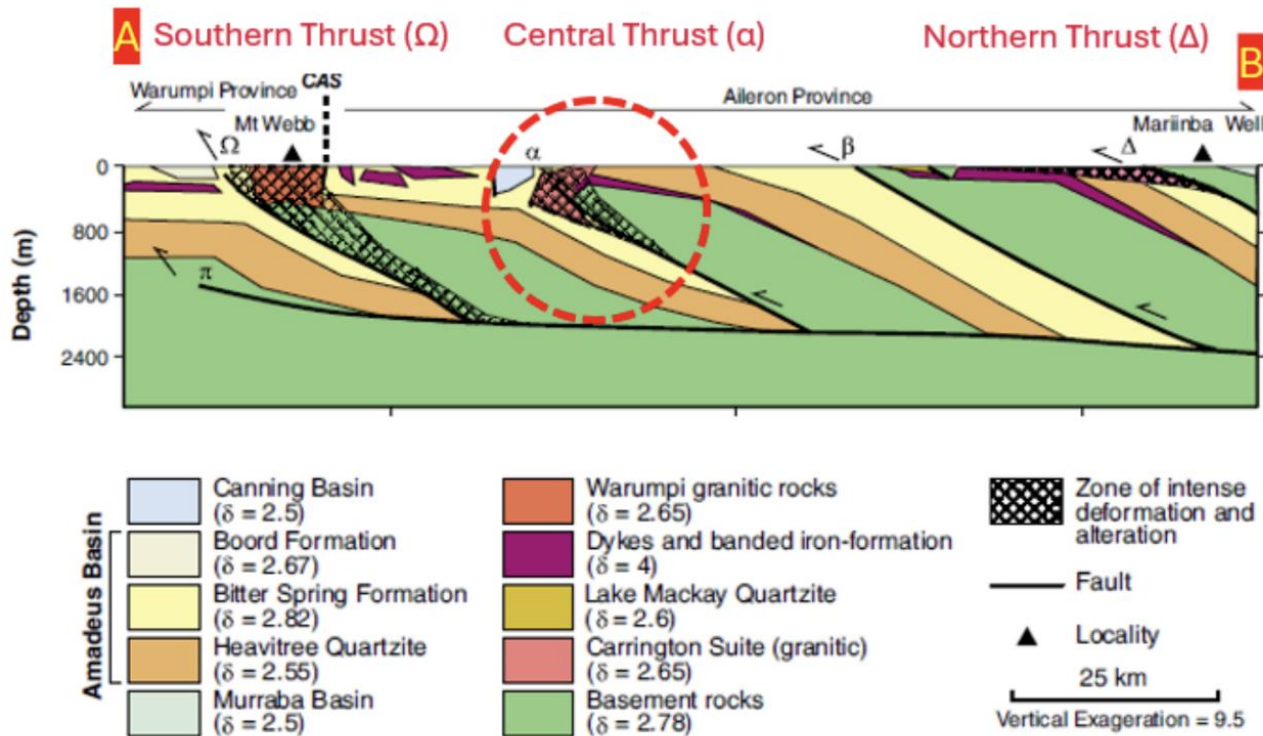


Integration with gravity and
structural interpretation



Identification of high-
priority anomalies

Multiple High-Impact Targets Identified



Structural + magnetic anomalies consistent with carbonatites

Clustered targets across tenure

Ranked based on scale, signature, and geological context

Drill-ready pipeline emerging

One of The Largest Landholdings In The Region



Over 2,000km² across four tenements



Recent discoveries highlight niobium-rich carbonatite systems

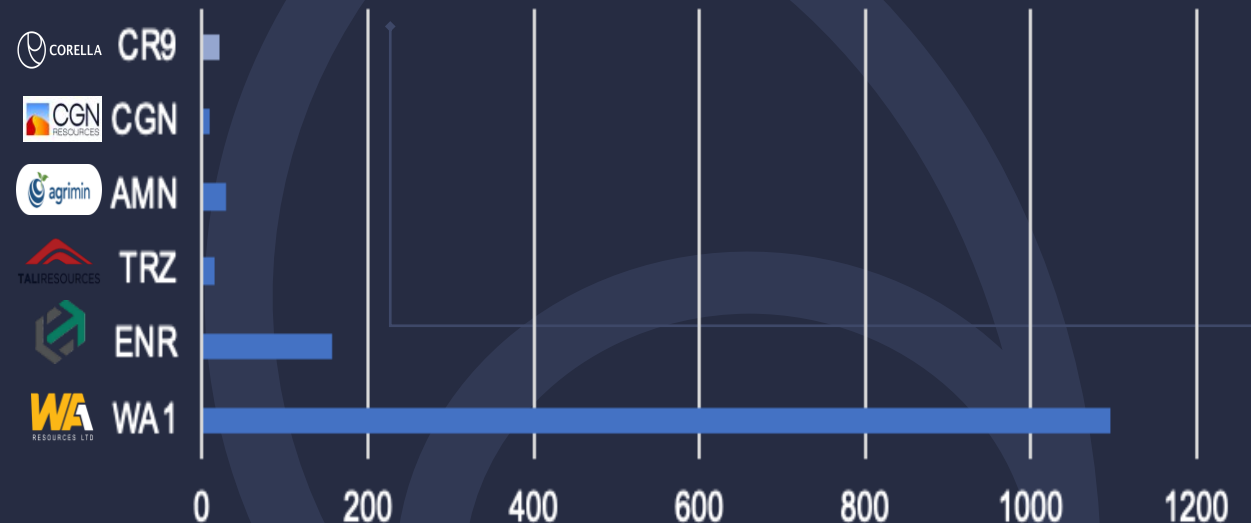


Strong market interest in critical minerals (Nb + REE)



Comparable companies have achieved **significant valuation uplift**

Market Cap (AUD M)



Next Steps



Maintain ongoing engagement with Kiwirrkurra Traditional Owners to support access and exploration activities



Interpret aeromagnetic data and integrate GSWA datasets to refine and prioritise targets



Undertake mapping, surface sampling and targeted ground geophysics to validate carbonatite targets



Complete heritage clearance surveys across priority drill areas



Finalise ranked drill targets and commence first-pass drilling

Corporate Snapshot after Share Issue



Board & Management



Mr Philip Re
Executive
Chairman



Mr Peter Woods
Non-Executive
Director



Mr Nick Revell
Non-Executive
Director



Mr Stuart Third
Company Secretary

1,800,490,079

Shares on Issue

\$21.6m

Market Cap (at \$0.012)

\$2,700,000

Cash at Bank

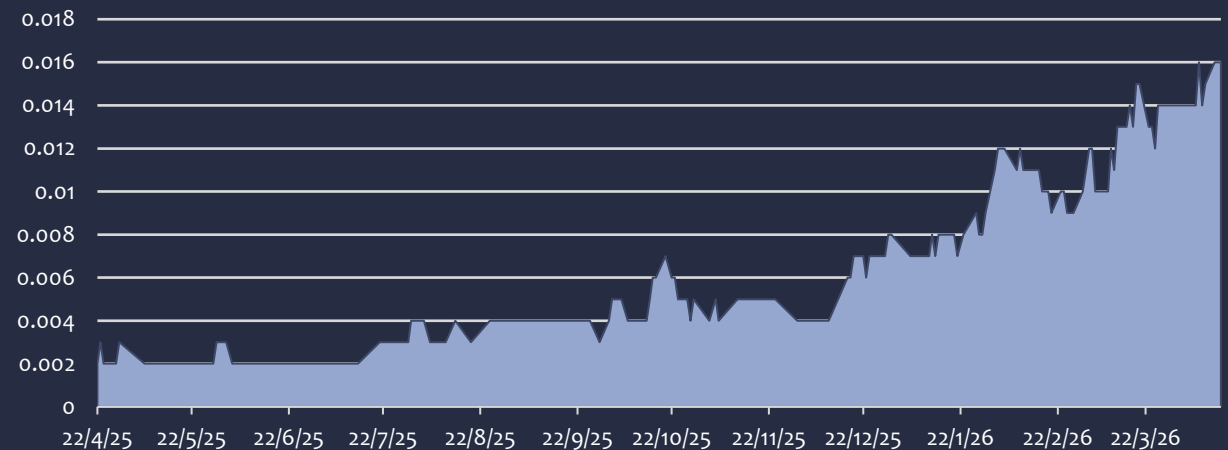
\$18,905,880

Enterprise Value

Unlisted Options

CR9AH	124,605,393
CR9AI	328,106,290
CR9AJ	200,000,000
CR9AK	335,000,000
New	208,333,333

CR9 12-Month Share Price



The numbers relating to capital structure and value are the estimated position upon completion of the acquisition and the issue of the shares and options subject to shareholder approval

Australian Securities Exchange. (2026). Corella Resources Ltd (ASX:CR9). Retrieved April 16, 2026, from <https://www.asx.com.au/markets/company/CR9>



FOR MORE INFORMATION CONTACT

Registered Office
Level 1, 40 Subiaco Square Road
Subiaco WA 6008
Phone +61 8 9200 4402
info@corellaresources.com

CORELLARESOURCES.COM.AU
ASX: CR9

