

CATALINA RESOURCES

STRATEGIC ACQUISITION EXPANDS MID-WEST GOLD PORTFOLIO

MAY 2026



Catalina
Resources

ASX:CTN

DISCLAIMER

This presentation has been prepared by Catalina Resources Ltd (“Company”). It does not purport to contain all the information that a prospective investor may require in connection with any potential investment in the Company. You should not treat the contents of this presentation, or any information provided in connection with it, as financial advice, financial product advice or advice relating to legal, taxation or investment matters.

No representation or warranty (whether express or implied) is made by the Company or any of its officers, advisers, agents or employees as to the accuracy, completeness or reasonableness of the information, statements, opinions or matters (express or implied) arising out of, contained in or derived from this presentation or provided in connection with it, or any omission from this presentation, nor as to the attainability of any estimates, forecasts or projections set out in this presentation.

This presentation is provided expressly on the basis that you will carry out your own independent inquiries into the matters contained in the presentation and make your own independent decisions about the affairs, financial position or prospects of the Company. The Company reserves the right to update, amend or supplement the information at any time in its absolute discretion (without incurring any obligation to do so).

Neither the Company, nor its related bodies corporate, officers, their advisers, agents and employees accept any responsibility or liability to you or to any other person or entity arising out of this presentation including pursuant to the general law (whether for negligence, under statute or otherwise), or under the Australian Securities and Investments Commission Act 2001, Corporations Act 2001, Competition and Consumer Act 2010 or any corresponding provision of any Australian state or territory legislation (or the law of any similar legislation in any other jurisdiction), or similar provision under any applicable law. Any such responsibility or liability is, to the maximum extent permitted by law, expressly disclaimed and excluded.

Nothing in this material should be construed as either an offer to sell or a solicitation of an offer to buy or sell securities. It does not include all available information and should not be used in isolation as a basis to invest in the Company.

ASX Listing Rule 5.23.2

The Company confirms that it is not aware of any new information or data that materially affects the information included in this announcement. No exploration data or results is included in this document that has not previously been released publicly. The source of all data or results have been referenced.

Future matters

This presentation contains reference to certain intentions, expectations, future plans, strategy and prospects of the Company.

Those intentions, expectations, future plans, strategy and prospects may or may not be achieved. They are based on certain assumptions, which may not be met or on which views may differ and may be affected by known and unknown risks. The performance and operations of the Company may be influenced by a number of factors, many of which are outside the control of the Company. No representation or warranty, express or implied, is made by the Company, or any of its directors, officers, employees, advisers or agents that any intentions, expectations or plans will be achieved either totally or partially or that any particular rate of return will be achieved.

Given the risks and uncertainties that may cause the Company’s actual future results, performance or achievements to be materially different from those expected, planned or intended, recipients should not place undue reliance on these intentions, expectations, future plans, strategy and prospects. The Company does not warrant or represent that the actual results, performance or achievements will be as expected, planned or intended.

US disclosure

This document does not constitute any part of any offer to sell, or the solicitation of an offer to buy, any securities in the United States or to, or for the account or benefit of any “US person” as defined in Regulation S under the US Securities Act of 1993 (“Securities Act”). The Company’s shares have not been, and will not be, registered under the Securities Act or the securities laws of any state or other jurisdiction of the United States, and may not be offered or sold in the United States or to any US person without being so registered or pursuant to an exemption from registration including an exemption for qualified institutional buyers.

CORPORATE OVERVIEW (POST COMPLETION)



\$0.055
SHARE PRICE

\$12.78M
MARKET CAPITALISATION

~\$3.40M
CASH AT BANK

\$8.46M
ENTERPRISE VALUE (EV)

232,354,555
SHARES ON ISSUE

ASX:CTN
COMPANY TICKER

113,086,921
LISTED OPT. ON ISSUE

\$0.115 exp 22/05/27
LISTED OPT. TERMS



KARL SIMICH
NON-EXECUTIVE CHAIRMAN

Mining executive with over 40 years' experience in corporate finance and international resource company leadership.

He was the founder of Sandfire Resources (ASX: SFR), where he led the discovery, development and operation of the high-grade DeGrussa Copper-Gold Mine.

Karl is a Fellow of the Institute of Chartered Accountants and the Financial Services Institute of Australasia.



ROSS COTTON
EXECUTIVE DIRECTOR

Experienced corporate executive with more than 20 years in the resources sector, specialising in project development, corporate finance, and capital markets.

He has held executive and board roles across a range of ASX-listed companies, with a focus on identifying and advancing exploration assets, building high-performing teams, and securing funding to support growth.



JADE SMITH
EXECUTIVE DIRECTOR

Accomplished and respected leader in business transformation and optimisation, bringing more than 20 years of executive and consulting experience across government, health, education and resources.

He provides Board-level oversight of Catalina's exploration and development programs across the Company's portfolio, ensuring alignment with strategic objectives and shareholder value.



DR. NISHKA PIECHOCKA
CHIEF GEOLOGIST

PhD-qualified geologist with 19 years' experience across gold, rare earths, copper and iron ore, spanning exploration, resource development and mine geology.

Her career includes roles with Rio Tinto, BHP and Fortescue, together with private exploration and consulting experience. She has led complex exploration programs and brings strong technical and commercial capability to project advancement.

Nishka is currently Vice President of the Australian Institute of Geoscientists. **3**

MID-WEST ASSET PORTFOLIO

POSITIONED FOR DISCOVERY, GROWTH AND STRATEGIC CONSOLIDATION



STRATEGICALLY CONSOLIDATED LANDHOLDING

District-scale footprint across multiple prospective belts, mills and infrastructure.



EXPOSURE TO UNDEREXPLORED SYSTEMS

Gold and VMS targets with limited modern exploration and significant discovery upside.



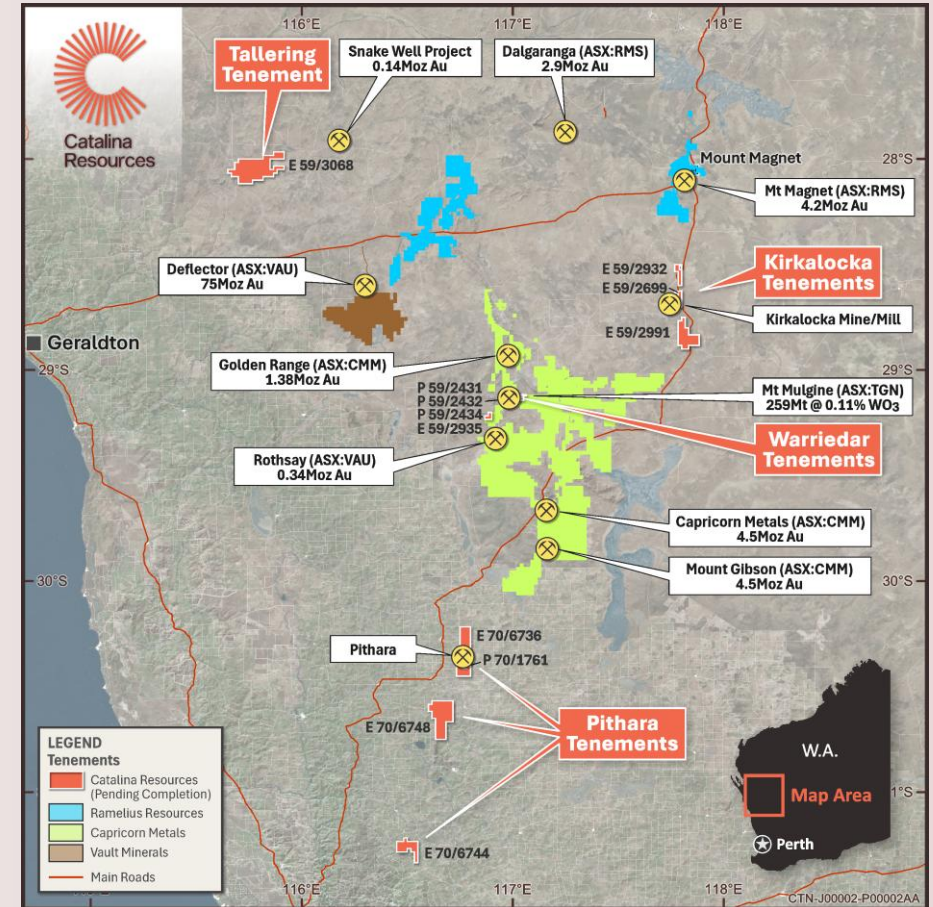
MULTIPLE DRILL-READY OPPORTUNITIES

Walk-up targets generated through historical drilling, geophysics and geological reinterpretation.



FUNDED FOR ACCELERATED EXPLORATION

Technical review is underway to refine drill-ready targets and progress near-term exploration programs.



KIRKALOCKA

POSITIONED FOR DISCOVERY, CONSOLIDATION AND DEVELOPMENT



LOCATED IN A PROVEN GOLD BELT

Located **~50km** south of Mt Magnet within the Wydgee-Meekathara Greenstone Belt, Murchison Province.



ADJACENT TO KIRKALOCKA GOLD MINE

Strategically positioned along the eastern margin of the belt, adjacent to the Kirkalocka Gold Mine, which hosts a reported **~240,000oz Au** Mineral Resource.



ACCESS TO KIRKALOCKA GOLD PROCESSING PLANT

Nearby processing hub with a throughput capacity of **2Mtpa**, currently being advanced toward a planned recommencement of operations in **2026** by Gylden Resources Limited.



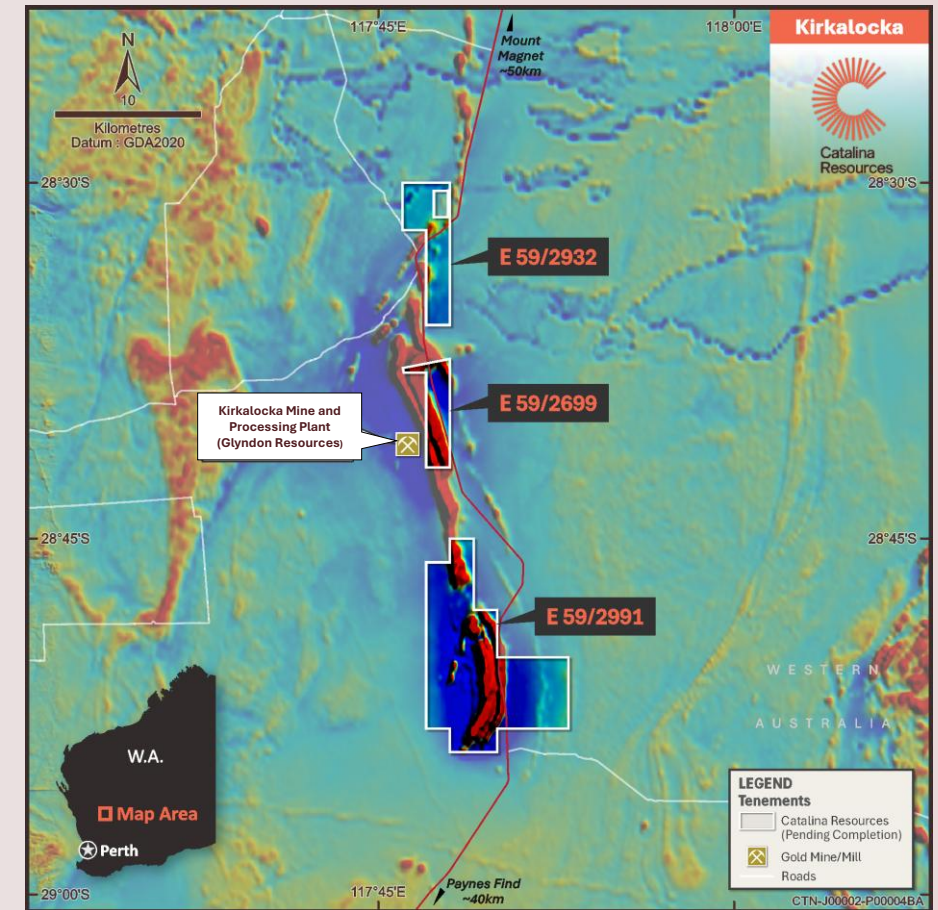
EXCELLENT ACCESS & INFRASTRUCTURE

Direct access via the Great Northern Highway and located within a region of **extensive historical mining and active exploration**.



HIGHLY PROSPECTIVE & DRILL-READY

Prospective for structurally controlled orogenic gold associated with major shear corridors, greenstone–granite contacts and favourable host rocks. Historical datasets and structural interpretation have defined **multiple drill-ready targets** across underexplored greenstone stratigraphy.



WARRIEDAR

POSITIONED AMONGST ACTIVE REGIONAL OPERATORS



POSITIONED BETWEEN MAJOR REGIONAL OPERATORS

Landholding within the Yalgoo–Singleton Greenstone Belt, strategically located between Capricorn Metals Ltd tenure and in close proximity to Tungsten Mining NL's Mt Mulgine Project.



PROSPECTIVE GREENSTONE ARCHITECTURE

Structurally complex mafic–ultramafic volcanics, sediments and BIF units associated with major shear corridors and favourable gold settings.



HISTORICAL EXPLORATION IDENTIFIED MULTIPLE STRUCTURES

Historical aeromagnetic interpretation and fieldwork identified previously unrecognised structures considered prospective for mineralization.



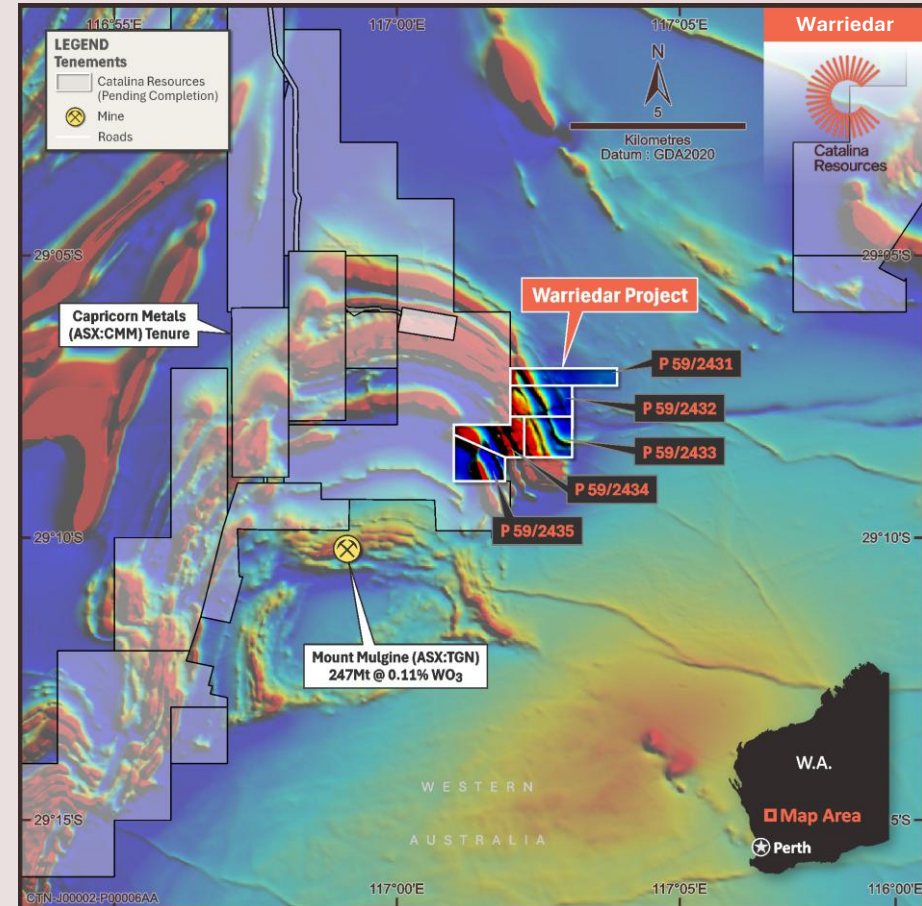
ANALOGOUS TO KNOWN REGIONAL GOLD SYSTEMS

Gold mineralisation at Mugs Luck is associated with sheared mafic–ultramafic and BIF contacts comparable to the Monaco, St Tropez and Riviera deposits.



MULTIPLE WALK-UP EXPLORATION TARGETS

Prospective for structurally controlled orogenic gold associated with major shear corridors, greenstone–granite contacts and favourable host rocks.



PITHARA

HISTORICAL HIGH-GRADE MINE



OUTSTANDING LOCATION IN THE DALWALLINU BELT

~110km² landholding within the underexplored Dalwallinu Greenstone Belt in a region of increasing exploration and development activity.



HISTORICAL HIGH-GRADE GOLD PIT

Hosts the historical Pithara Gold Pit, which reportedly produced ~9,000oz @ 15.4g/t Au from shallow open pit with potential to extend mineralisation at depth and along strike.



BROADER REGIONAL EXPLORATION EXPOSURE

Includes historical workings near Bolgart, an area of limited modern exploration despite renewed regional activity including nearby work associated with Challice Mining Limited's Kings Project JV.



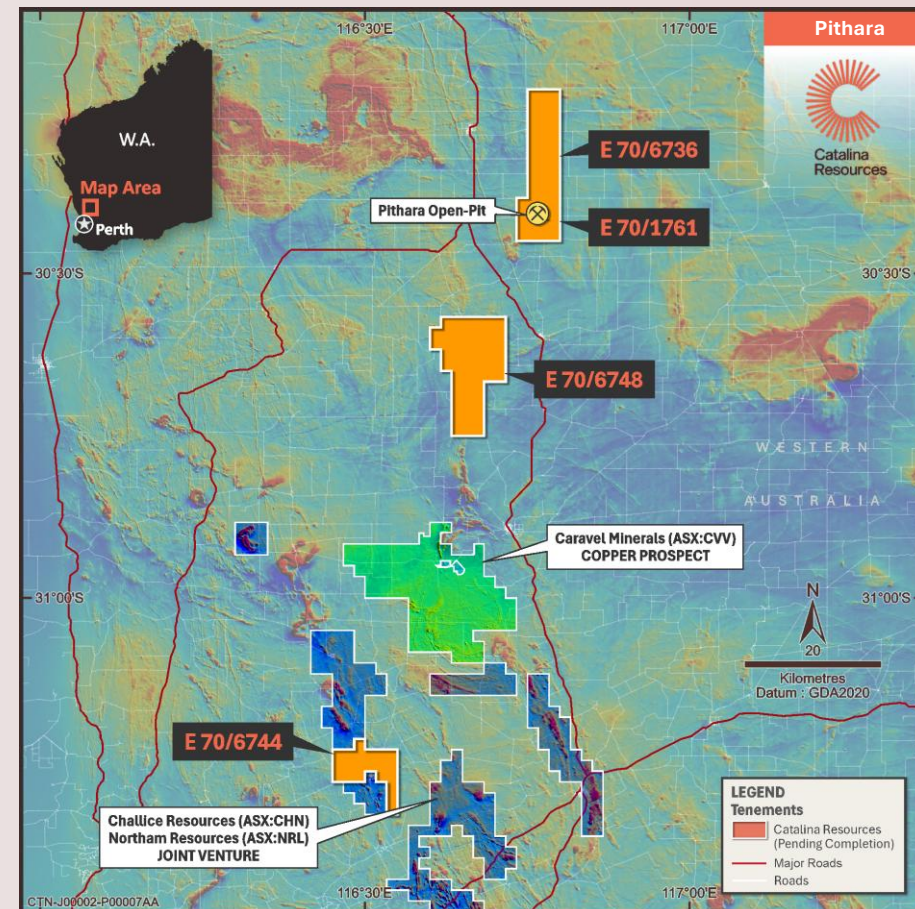
HIGHLY PROSPECTIVE GEOLOGY

Prospective for structurally controlled orogenic gold mineralisation along interpreted shear corridors and BIF units.



MULTIPLE DRILL-READY TARGETS

Multiple walk-up drill targets identified from historical drilling, artisanal workings and structural reinterpretation.



TALLERING

VMS / COPPER-GOLD DISCOVERY OPPORTUNITY



LARGE-SCALE LANDHOLDING

~236km² project covering ~30km strike of the underexplored Talling Greenstone Belt. ~120km inland from Geraldton, Murchison Province WA.



GOLD AND VMS POTENTIAL

Highly prospective for both orogenic gold and copper-rich VMS mineralisation associated with favourable volcanic sequences and sulphide-bearing horizons.



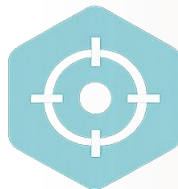
STRUCTURAL CORRIDOR EXPOSURE

Covers interpreted regional-scale structural corridors considered prospective for gold and base metal mineralisation.



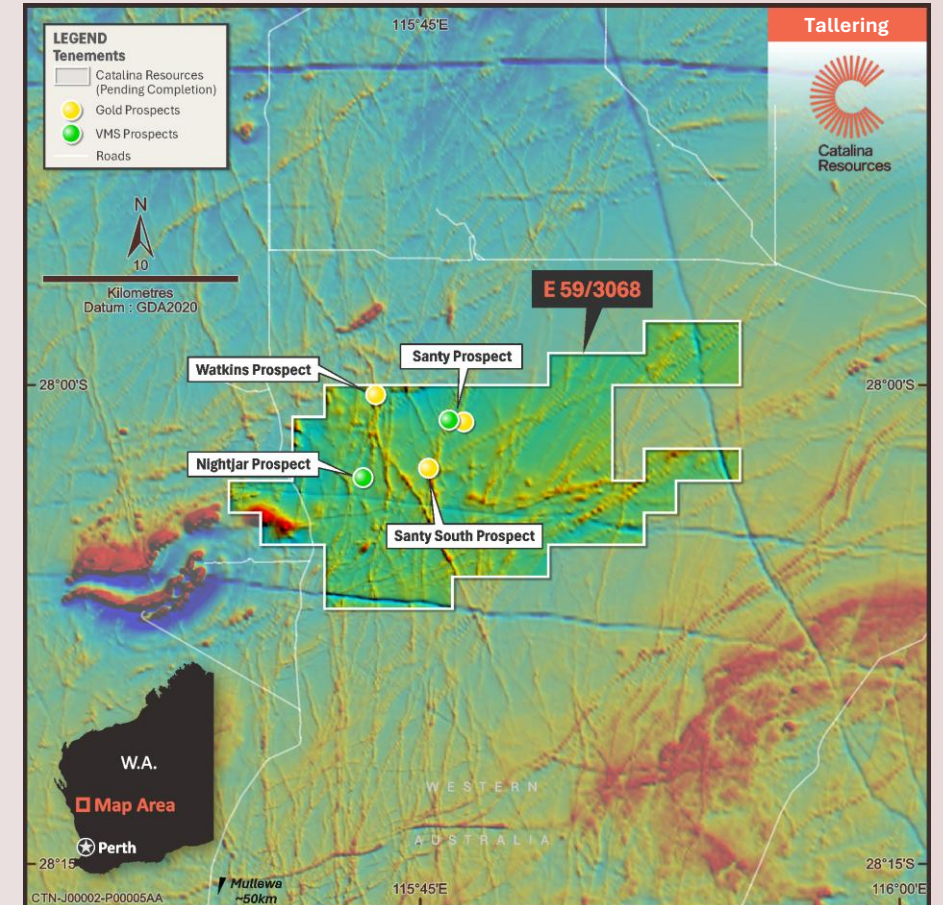
UNTESTED GEOPHYSICAL TARGETS

Multiple untested EM and IP anomalies associated with mapped sulphide mineralisation and favourable host rocks remain untested by modern drill programs.



EXPLORATION UPSIDE

Multiple walk-up drill targets identified from historical drilling, artisanal workings and structural reinterpretation remain untested by deeper and systematic modern exploration.



IMMEDIATE EXPLORATION AND NEXT STEPS

RAPID PLANNING AND EXECUTION

Catalina is rapidly assessing each tenement and reviewing all available data with the objective of progressing development and exploration programs whilst advancing heritage-related workstreams. In parallel, we are progressing toward first-pass drilling at our Cu – Au project at Beasley Creek.



TECHNICAL ASSESSMENT UNDERWAY

Rapid project reviews and geological assessments currently in progress across all priority tenements.



PROGRESSING HERITAGE & ACCESS

Advancing heritage, permitting and access-related activities in parallel to support efficient field execution.



GENERATING ADDITIONAL TARGETS

Systematic review and reinterpretation of historical data aimed at identifying further exploration opportunities beyond existing drill-ready targets.



ADVANCING EXPLORATION PROGRAMS

Progressing toward execution of prioritised exploration and drilling activities across the portfolio.

Now

June / July

July / August

September/October

LAKE JOHNSTON

NEWLY ACQUIRED PROJECT IN ACTIVE NEIGHBOURHOOD



STRATEGIC LOCATION

~265km² landholding within the emerging Lake Johnston mineral province with Forrestania Resources (ASX:FRS), TG Metals (ASX:TG6) and Charger Metals (ASX:CHR) projects and tenements adjust to holdings.



NEARBY EXPLORATION SUCCESS

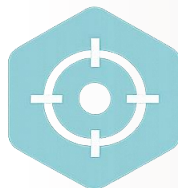
Xmas Gold Discovery December 2025 - **12m @ 6.55 g/t Au** from 132m incl. **4m @ 16.9 g/t Au** with visible coarse gold. Over 2,000m of prospective strike remains untested (Charger Metals).

Medcalf Lithium Deposit Maiden Inferred Resource of **8.2Mt @ 1.0% Li₂O**, announced in December 2025. Open at depth, with an Exploration Target of **3-5Mt @ 1.0-1.4% Li₂O** at Medcalf West. Rio Tinto invested \$6.4M before Charger elected to retain 100% ownership (Charger Metals).



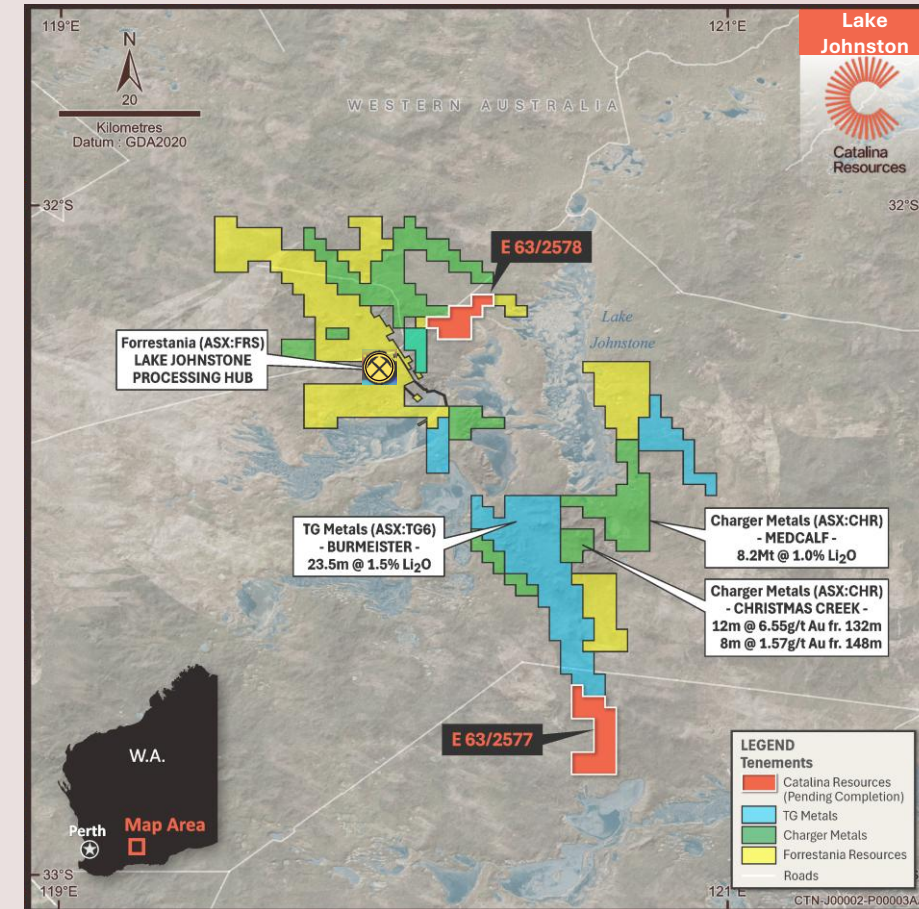
ACCESS TO LAKE JOHNSTON PROCESSING HUB

Positioned near Forrestania's proposed 3.2Mtpa Lake Johnston processing hub redevelopment.



MULTIPLE UNDEREXPLORED TARGETS

Multiple underexplored targets supported by historical geochemistry, geophysics and regional geological interpretation.



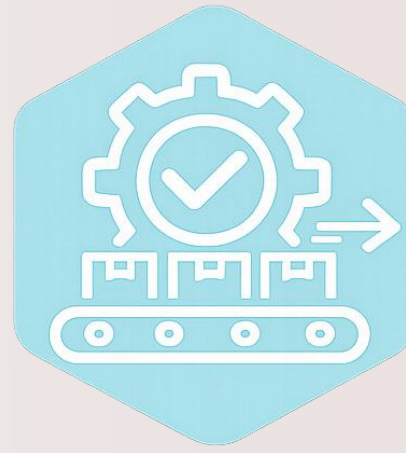
Refer CHR ASX announcement 30 December 2025 [Charger makes high grade gold discovery at Xmas](#)

KEY TAKEAWAYS



PORTFOLIO OF HIGH-QUALITY PROJECTS

District-scale exposure across highly prospective gold and VMS systems positioned adjacent to regional processing infrastructure, historical mining centres and active exploration corridors.



EXPERIENCED TEAM POSITIONED TO DELIVER

Strong technical and corporate capability with experience spanning exploration, discovery, project development and capital markets execution.



FULLY FUNDED FOR NEAR-TERM EXECUTION

Funding in place to rapidly advance technical review, target generation and exploration activities across priority projects.

+61 8 6165 8858

info@catalinaresources.com.au

Level 2/7 Havelock Street
West Perth, WA 6005

catalinaresources.com.au

ASX:CTN



Catalina
Resources