

TARRINA
RESOURCES

Australian Gold and Copper

Disclaimer

This presentation does not constitute investment advice. This presentation has been prepared by Tarrina Resources Limited ("the Company" or ASX:TR8) to provide summary information about the Company and its activities as at the date of this presentation (May 2026). Neither this presentation nor the information contained in it constitutes a disclosure document or an offer, invitation, solicitation or recommendation in relation to the purchase or sale of shares in any jurisdiction. The presentation does not take into account any person's particular investment objectives, financial resources or other relevant circumstances and the opinions and recommendations in this presentation are not intended to represent recommendations of particular investments to particular persons. All securities transactions involve risks, which include (among others) the risk of adverse or unanticipated market, financial or political developments. This presentation does not purport to contain all of the information that a prospective investor may require to make an evaluation of the Company or its business activities. Nothing in this document is, or is intended to be, a recommendation to invest in the Company.

No representation or warranty (whether express or implied) is made by the Company or any of its officers, advisers, agents or employees as to the accuracy, completeness or reasonableness of the information, statements, opinions or matters (express or implied) arising out of, contained in or derived from this presentation or provided in connection with it, or any omission from this presentation, nor as to the attainability of any estimates, forecasts or projections set out in this presentation. This presentation is provided expressly on the basis that you will carry out your own independent inquiries into the matters contained in the presentation and the presentation contains only an overview of Tarrina Resources Limited (Company or Tarrina Resources) and its activities and operations. The contents of this presentation, including matters relating to the geology your own independent decisions about the affairs, financial position or prospects of the Company. The Company reserves the right to update, amend or supplement the information at any time in its absolute discretion (without incurring any obligation to do so).

Neither the Company, nor its related bodies corporate, officers, their advisers, agents and employees accept any responsibility or liability to you or to any other person or entity arising out of this presentation including pursuant to the general law (whether for negligence, under statute or otherwise), or under the Australian Securities and Investments Commission Act 2001 (Cth), Corporations Act 2001 (Cth), Competition and Consumer Act 2010 (Cth) or any corresponding provision of any Australian state or territory legislation (or the law of any similar legislation in any other jurisdiction), or similar provision under any applicable law. Any such responsibility or liability is, to the maximum extent permitted by law, expressly disclaimed and excluded.

This presentation may contain forward-looking statements concerning the Company including statements regarding certain intentions, expectations, future plans, strategy and prospects of the Company (Forward-looking Statements) which may or may not be achieved. In certain cases, Forward-looking Statements may be identified by such terms as "anticipates", "believes", "should", "could", "estimates", "target", "likely", "plan", "expects", "may", "intend", "shall", "will", or "would". Forward-looking statements are based on information available to the Company at the date of this presentation and are made on reasonable grounds. However, no assurance can be given that actual outcomes will not differ materially from those expressed or implied.

These Forward-looking Statements are based on the Company's beliefs, opinions and estimates of the Company as of the date the Forward-looking Statements are made. No obligation is assumed to update Forward-looking Statements if these beliefs, opinions and estimates should change or to reflect other future development. Except as required by law or the ASX Listing Rules, the Company undertakes no obligation to update or revise any forward-looking statements. Although the Company believes that the assumptions made by the Company and the expectations represented by such information are reasonable, there can be no assurance that the Forward-looking Statements will prove to be accurate. The performance and operations of

the Company may be influenced by a number of factors, many of which are outside the control of the Company.

No representation or warranty, express or implied, is made by the Company, or any of its directors, officers, employees, advisers or agents that any intentions, expectations or plans will be achieved either totally or partially or that any particular rate of return will be achieved. Given the risks and uncertainties that may cause the Company's actual future results, performance or achievements to be materially different from those expected, planned or intended, recipients should not place undue reliance on these intentions, expectations, future plans, strategy and prospects. The Company does not warrant or represent that the actual results, performance or achievements will be as expected, planned or intended.

ASX Announcements Referenced

- 1 ASX: TR8 29 January 2026 – Diamond Drilling Commences at Christmas Gift Gold Project.
- 2 ASX: TR8 11 March 2026 – Drilling and Soil Sampling Confirms Targets at Gold Project .
- 3 ASX: TR8 14 January 2026 – Initial Field Work & Core Relogging Completed.
- 4 ASX: TR8 5 May 2026 – Christmas Gift First Assays Confirm High Grade Gold.
- 5 ASX: TR8 16 February 2026 – Untested Magnetic-Gravity IOCG Targets Defined at Walparuta

Listing Rule 5.23 Compliance Statement

The information in this presentation that relates to exploration results have previous been released on the ASX. The Company confirms that it is not aware of any new information or data that materially affects the information included in the relevant market announcements and, that all technical parameters underpinning the estimates in the relevant market announcement continue to apply and have not materially changed.

Cautionary Statement (Visual Observations)

The exploration results and geological interpretations reported in this announcement are preliminary in nature and are based on limited data. They should not be considered as indicative of the quantity, grade, or economic viability of any potential mineral resource. Further work is required to verify the results, including additional drilling, sampling, and geological assessment. No assurance can be given that future exploration will confirm the interpretations or lead to the definition of a Mineral Resource or Ore Reserve in accordance with the JORC Code (2012). Investors are advised that exploration is inherently uncertain and involves a high degree of risk.

While the Company has taken reasonable care to ensure that the information in this presentation is accurate and up to date, no representation or warranty, express or implied, is made as to the accuracy, reliability, or completeness of the information. The Company, its directors, officers, employees, and advisors disclaim all liability for any loss or damage arising from reliance on this presentation. To the maximum extent permitted by law, Tarrina Resources does not warrant the accuracy, currency or completeness of the information in this presentation, nor the future performance of the Company, and will not be responsible for any loss or damage arising from the use of the information.



Tarrina Resources (TR8), Exploring Since Relisting

- **Successfully relisted on the ASX** on 25 Nov 2025 via a **\$5M public offer at \$0.02** per share.
- Established a refreshed capital base and clear mandate to apply modern, data-driven exploration to add value to our projects.
- **Tight shareholder register**, with Top 20 holding 51.9% .
- Leveraged exposure to high-grade gold and copper-gold project exploration.
- Major share holders (>5%) :
 - JAF Capital Pty Ltd – 30,500,000 shares, 7.16%.
 - Mondorox Pty Ltd – 25,000,000 shares, 5.87%.
- Liquid post-relisting trading, with spikes around news flow.



SECURITY	AMOUNT
Shares on Issue	426,082,708
Escrowed shares	76,500,000
Fully paid shares on issue	349,582,708
Options (unquoted)	212,943,755
Cash position	\$2.7M
Share Price	\$0.019
Market Cap	\$8.10M

Investment Highlights



Three Australian Projects

Gold and Copper



Flagship Christmas Gift Gold Project (NSW)

High-grade historic production & drill hits



Two Early Stage South Australian Projects

Prospective for copper, gold, silver & REEs



Proven Board & Management

Track record in exploration, mine development and capital markets



Strong Position Post-relisting

with aggressive exploration plans for the first year



Marketing Support (NWR)

Active across social media, media distribution & investor communications



Exploration Momentum

Drilling, soil results and follow-up programs underway



Upcoming News flow

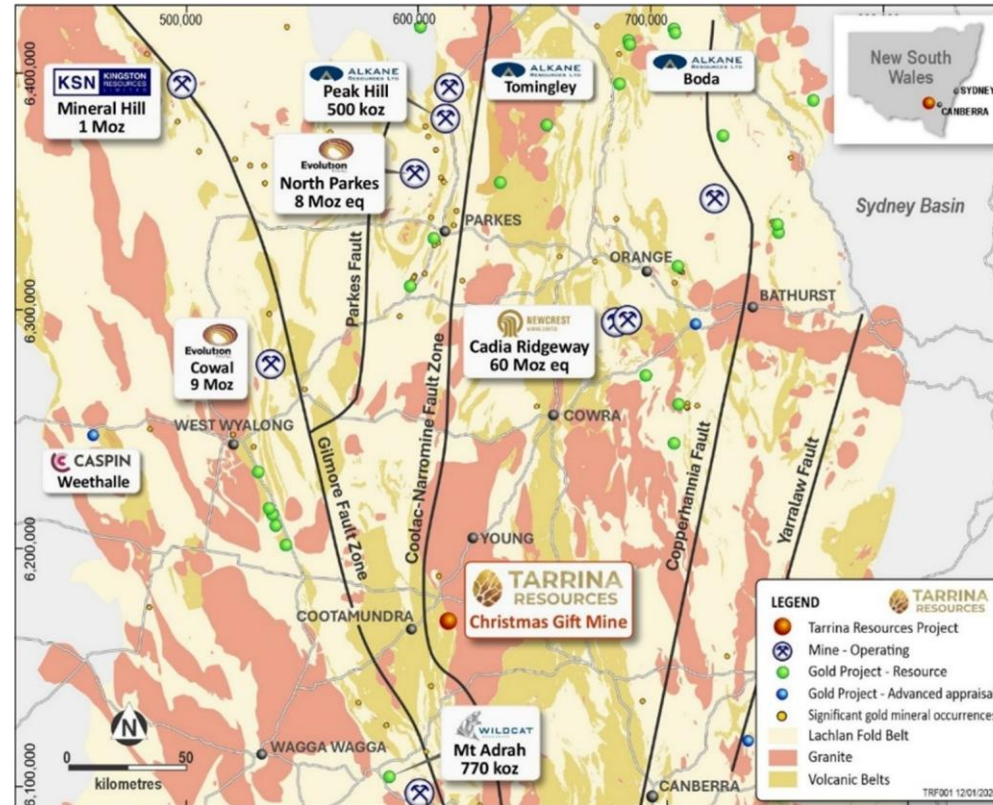
Drilling Results
Soil Results
Walparuta IP Results



Christmas Gift Gold Project Overview

High-Grade Gold System in the Lachlan Fold Belt, NSW

- Located 15km east of Cootamundra and 180km northwest of Canberra.
- 100% owned | EL 9615 & EL 9683 covering approximately 22km².
- Historic underground production: ~30,000oz @ 18g/t Au with only 225m of strike historically mined to 110m depth.
- Historic drilling intersected **broad zones of gold mineralisation with multiple high-grade intersections.**
- Only two holes have been drilled deeper than 150m and both intersected gold mineralisation at depth.
- Gold price continues to trade at record highs to **A\$6,500 per ounce**, compared to **A\$815 per ounce** when Christmas Gift was last drilled in 2006.

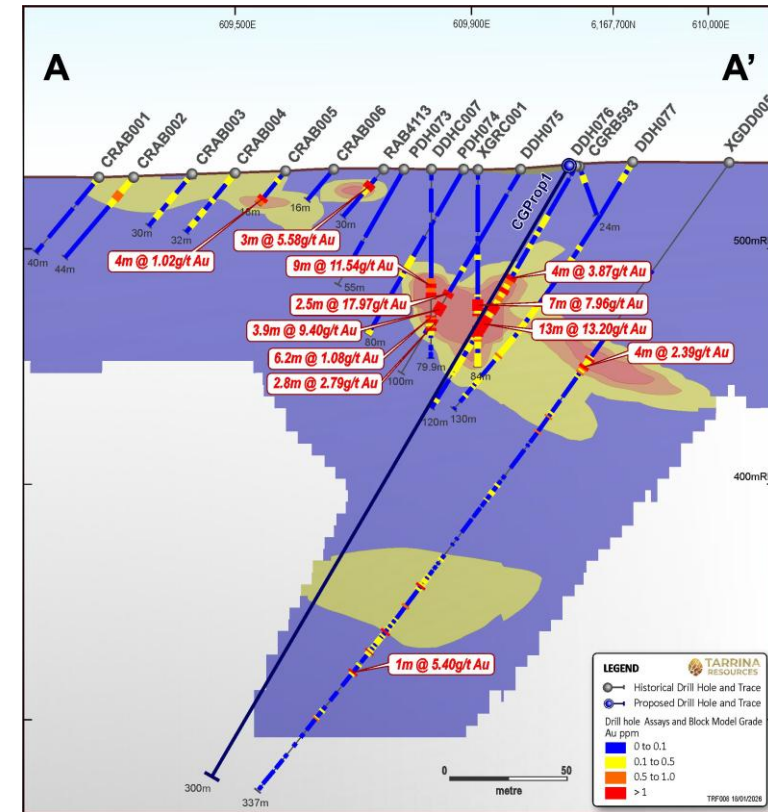
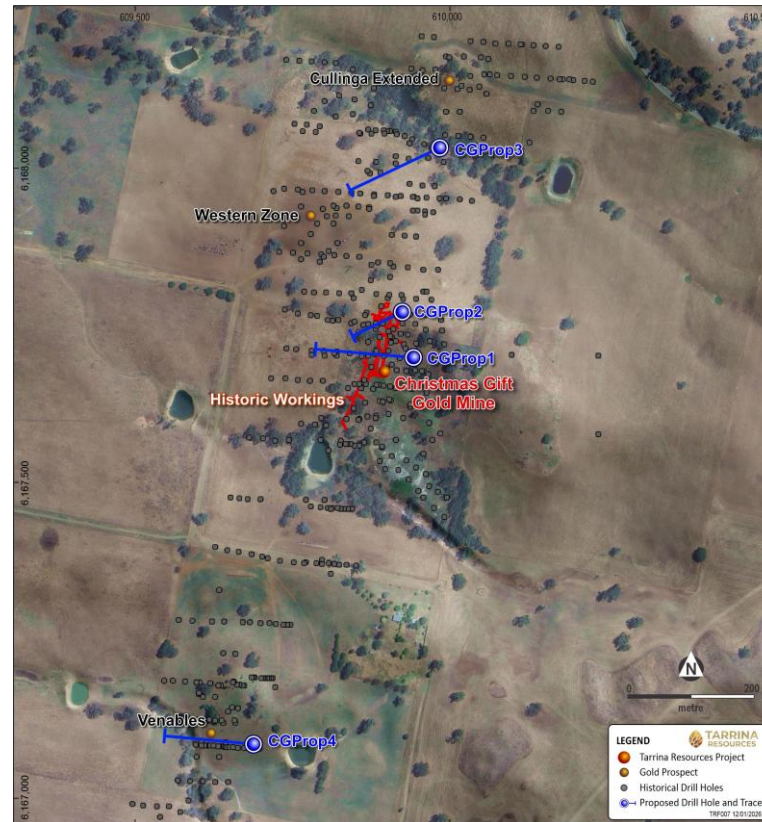


Best historic drill results

- 13.0 m at 13.20 g/t gold from 68m in DDH076;
- 8.0 m at 17.23 g/t gold from 12m in FRB012;
- 9.0 m at 11.54 g/t gold from 46m in DDHC007;
- 13.0 m at 6.60 g/t gold from 30m in PDH22;
- 4.5 m at 16.53 g/t gold from 12m in RAB84013;
- 4.0 m at 16.80 g/t gold from 12m in RAB-623;
- 7.0 m at 7.97 g/t gold from 55m in XGRC001.

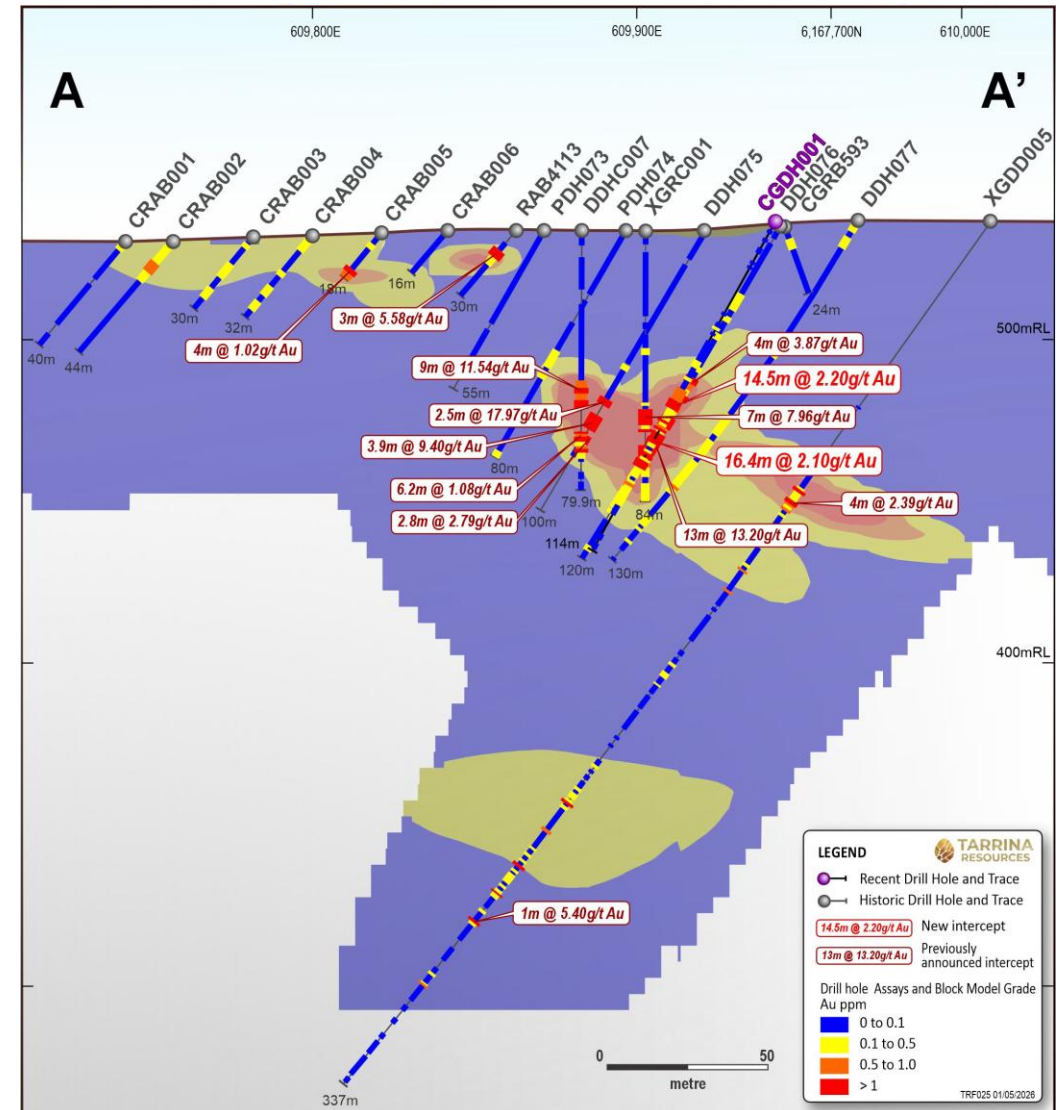
Phase 1 Diamond Drilling Plan And Results

- Four HQ-size core holes planned for 1,200m total¹. Six holes actually drilled, for a total of 1,180 metres².
- Replicate high-grade historic intersections for QAQC JORC compliance¹.
- Test extensions to 3D modelled gold mineralisation along strike¹.
- Drilling started on 2 February 2026 and completed on 28 February¹.
- CGDH001 and CGDH002 did not reach planned depth due to mine workings and CGDH001A drilled as a replacement².
- CGDH003 and CGDH004 drilled to test for along strike extensions from Christmas Gift to the Venables and Cullinga Extended mines².
- CGDH005 was added to test the down dip extension of the new zone of mineralisation in CGDH004.

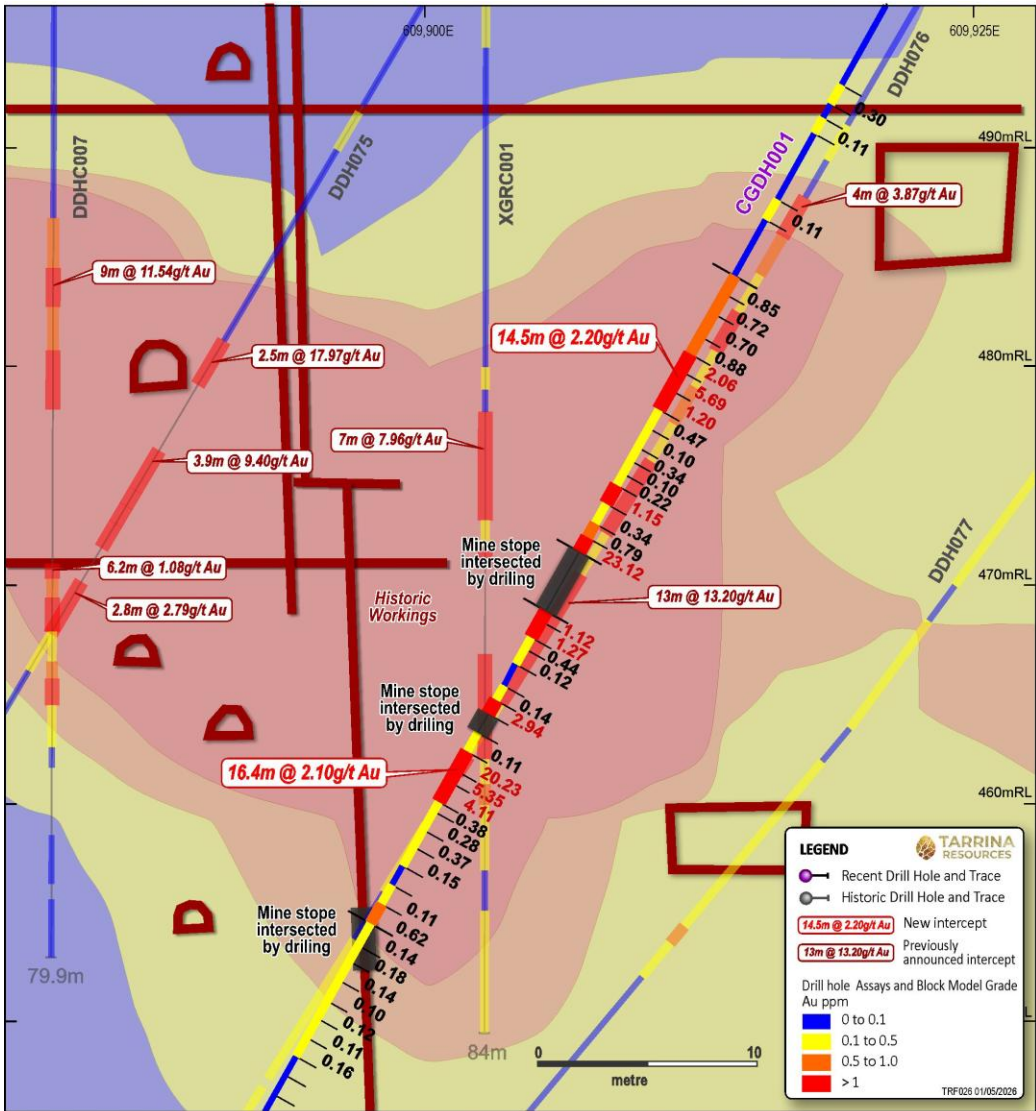


Phase 1 Diamond Drilling First Gold Assays Received

- First assays from hole confirm high-grade nature of the historically mined ore with intersections up to **23.12 g/t Au**.
- **31m gold mineralisation intersected**, either side of a 3m stope, confirming **significant widths and grades of gold remaining from the historic mining**.
- Combined widest intersection at the project to date including:
 - **14.5m at 2.23 g/t Au from 58m**, including **0.75m at 23.12 g/t Au from 71.75m** (at the edge of a 3m stope from historical mining), and followed by,
 - **16.4m at 2.06 g/t Au from 75.6m**, including **2.64m at 10.49 g/t Au from 83m**.
- Amongst the **best gram-metre intersections** recorded at the project to date (**fifteenth and sixteenth**).
- Remaining gold assays expected to be available at the **end of May** along with assays for **zinc and copper** for all holes.

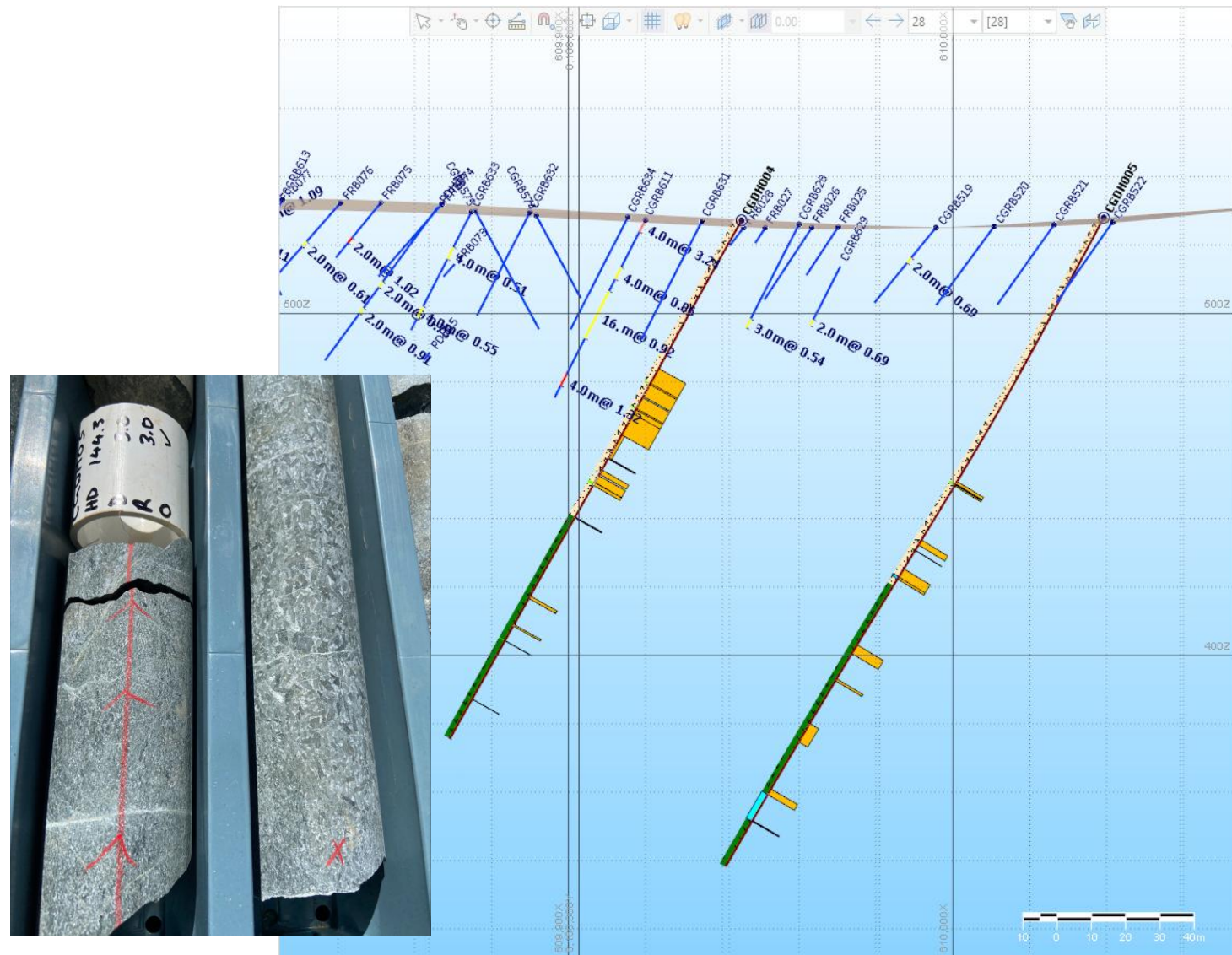
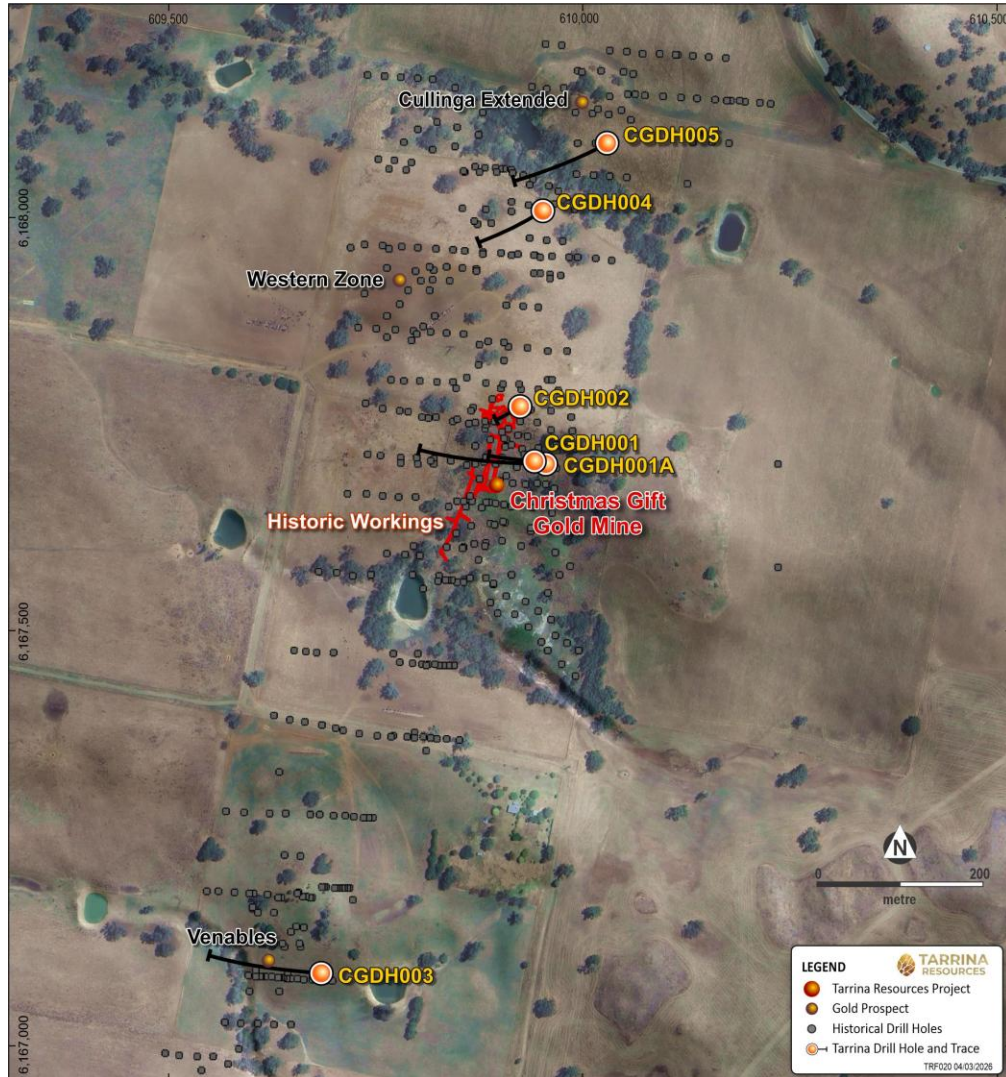


High Grade Gold Correlated With Visible Zinc And Copper Minerals²



Visual mineralisation is observational only and does not constitute a Mineral Resources, Exploration Target or Production Target. No quantitative assessment of grade, tonnage or continuity can be derived from visual estimates alone.

New Mineralisation Intersected 250m North Of Christmas Gift 2

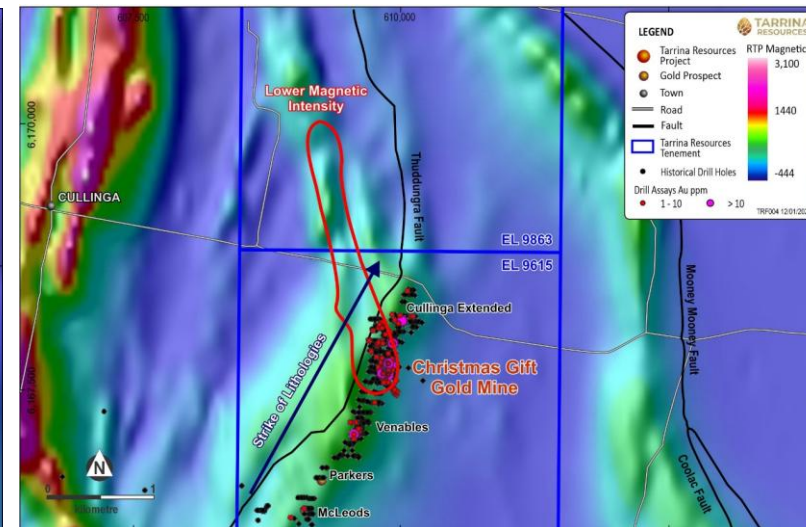
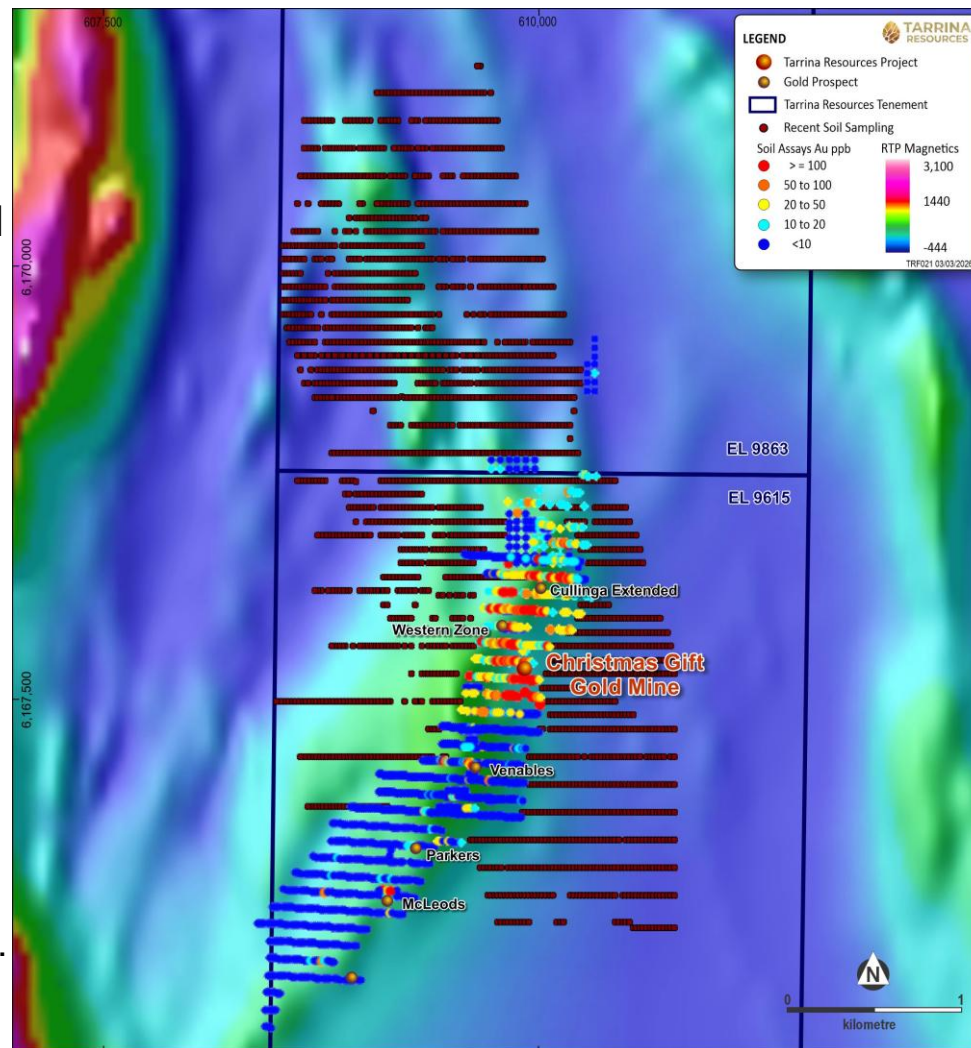


Visual mineralisation is observational only and does not constitute a Mineral Resources, Exploration Target or Production Target. No quantitative assessment of grade, tonnage or continuity can be derived from visual estimates alone.

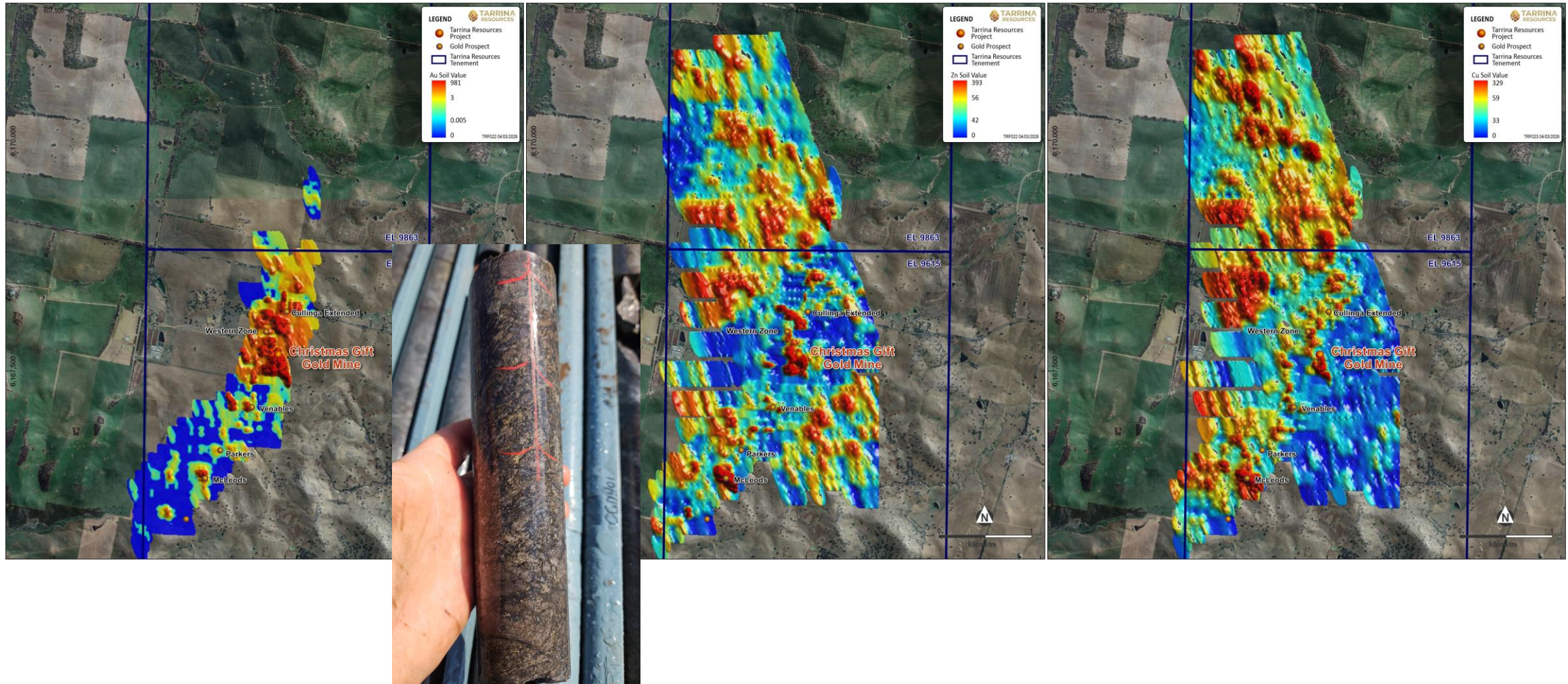
Soil Sampling Testing Northern and Southern Extensions From the Christmas Gift Gold Mine Completed



- Aim to find new gold reefs that the old miners did not find.
- Auger soil sampling was completed on 15 February 2026¹.
- 2,536 samples collected¹.
- Samples analysed by pXRF available, and samples being assayed for low level gold by SGS in Perth available by end of May.
- Drilling confirmed Zn and Cu mineralisation correlates with Au^{1 3}.
- Zn and Cu can be used as pathfinders for gold in soils on the under explored northern tenement³.



pXRF Results For Zinc And Copper Correlate With Gold At Christmas Gift So Can Be Used To Help Target Extensions To Gold Mineralisation ³



Visual mineralisation is observational only and does not constitute a Mineral Resources, Exploration Target or Production Target. No quantitative assessment of grade, tonnage or continuity can be derived from visual estimates alone.

Christmas Gift Project – Upside Potential



Open Mineralisation

1.5km gold-in-soil corridor defined and open. New Targets Coming



Extensive Mineralised Corridor

NNW demagnetised structural corridor identified in magnetics continues to host new mineralisation



Immediate Exploration

~1.5km strike mapped, largely untested below ~30m depth



Priority Targets

Multiple high-priority targets: Venables, Cullunga Extended, Western Zone, EL9683 extension and new soil targets

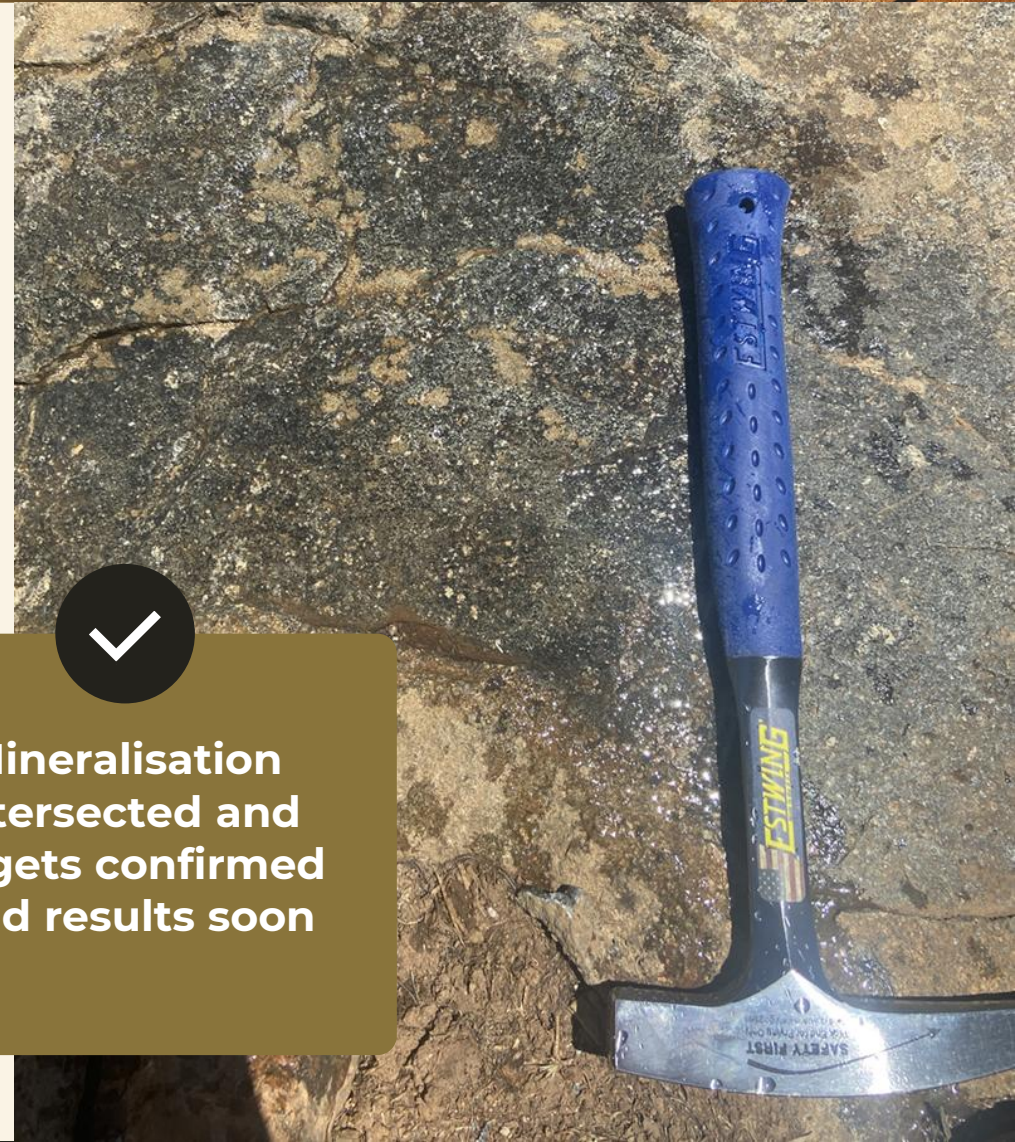


Land Access Agreements Signed

Ready to continue drilling targets through 2026

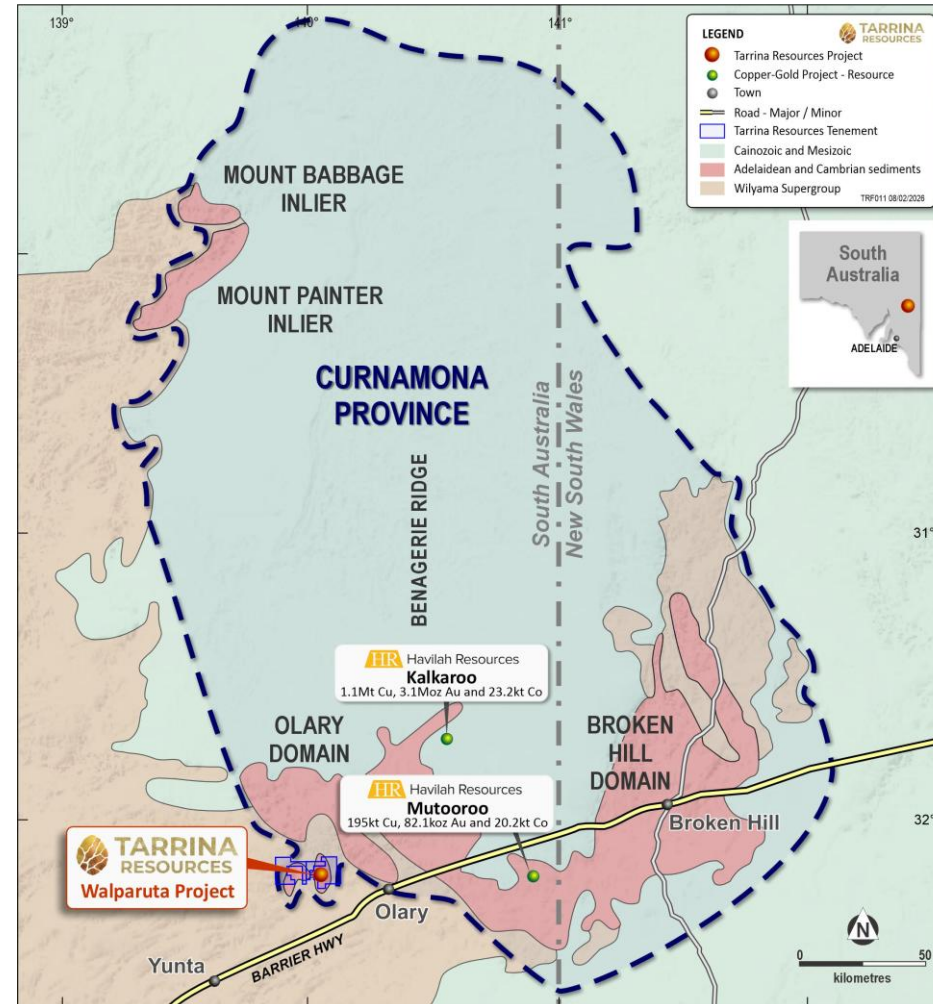


Mineralisation intersected and targets confirmed gold results soon



Walparuta Project (SA) Project Overview

- 100% owned comprising three tenements (EL 7050, EL 7051 and EL 7052) covering 220km² in the **Curnamona Province**.
- Region hosts Havilah Resources **Kalkaroo Project** (1,100 Kt Cu, 3.1M oz Au, 23Kt Co) 55 km to northeast and **Mutooroo Project** (192Kt Cu, 80K oz Au, 20Kt Co) 85 km to east.
- **Sandfire Resources** supporting the development of the Kalkaroo project.
- Historic mining produced **copper ore from Walparuta and Weekaroo mines**.
- **IOCG Cu-Au-Co mineralisation**.
- **Previously overlooked by explorers targeting Olympic Dam look-alikes.**



Best historic drill results

- 38.1 m @ **0.26 % Cu** and **0.31 g/t Au** from 15.2 m (Including 10.7 m @ **0.41 % Cu** and **0.46 g/t Au** from 16.8 m),
- 36.6 m @ **0.37 % Cu** and **0.27 g/t Au** from 39.6 m (Including 9.1 m @ **0.80 % Cu** and **0.53 g/t Au** from 57.9 m and 3.1 m @ **0.44 % Cu** and **0.25 g/t Au** from 71.6 m),
- 7.6 m @ **0.50 % Cu** and **0.97 g/t Au** from 132.6 m),
- 10.7 m @ **0.26 % Cu** and **0.10 g/t Au** from 152.4 m (Including 3.1 m @ **0.45 % Cu** and **0.09 g/t Au** from 157.0 m).

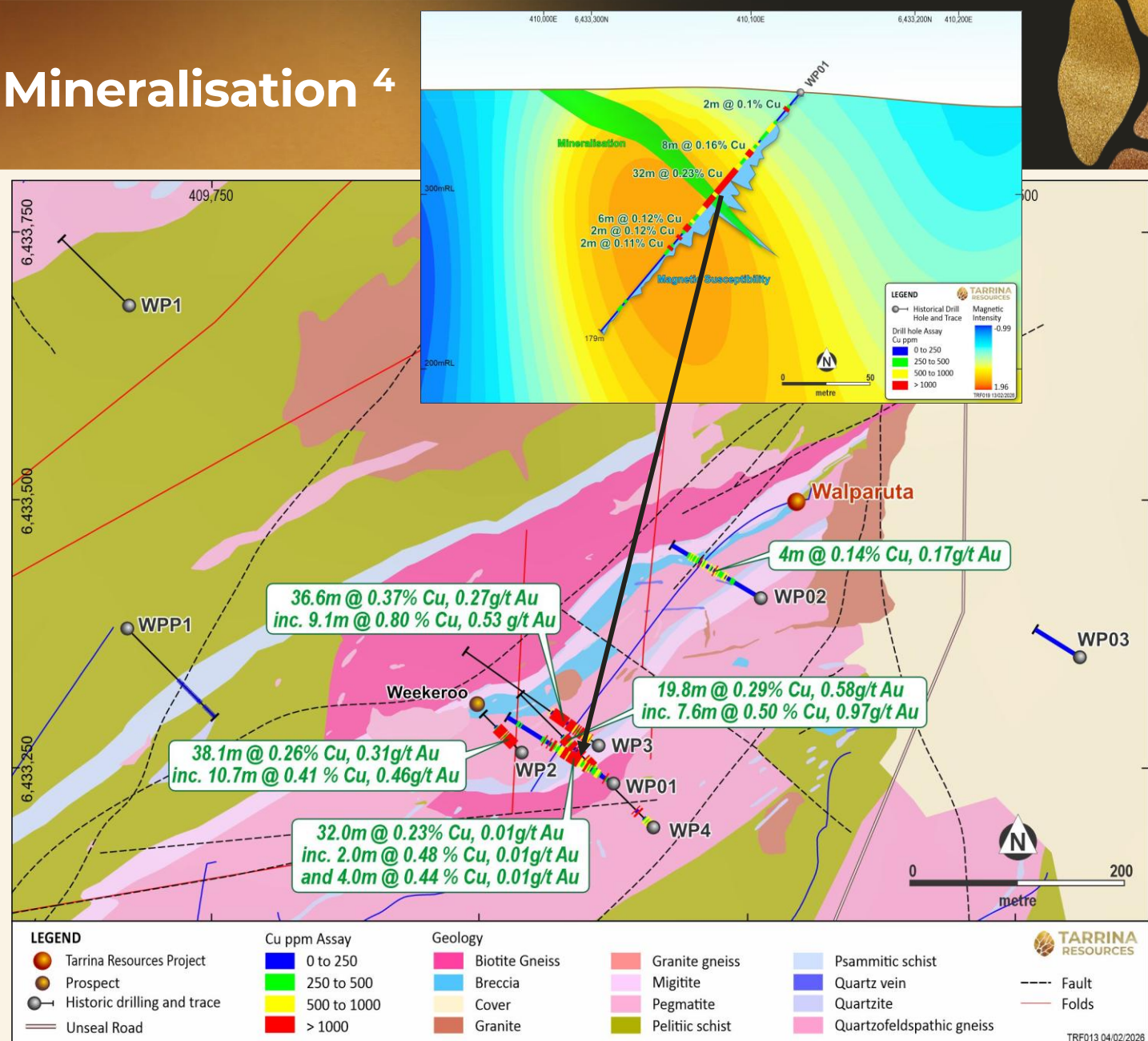
Walparuta Geology And Mineralisation 4

Geology

- Unmineralised host rocks have low to moderate magnetic intensity, moderate density and low conductivity.
- Host rocks gneiss, volcanoclastic units and amphibolite, overlain by Neoproterozoic sediments and intruded by granitoids and pegmatites.

Mineralisation

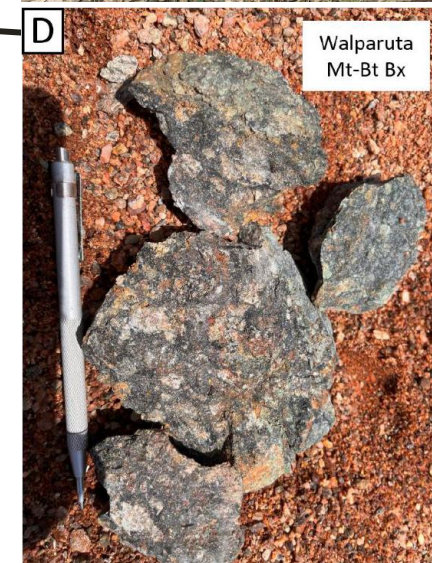
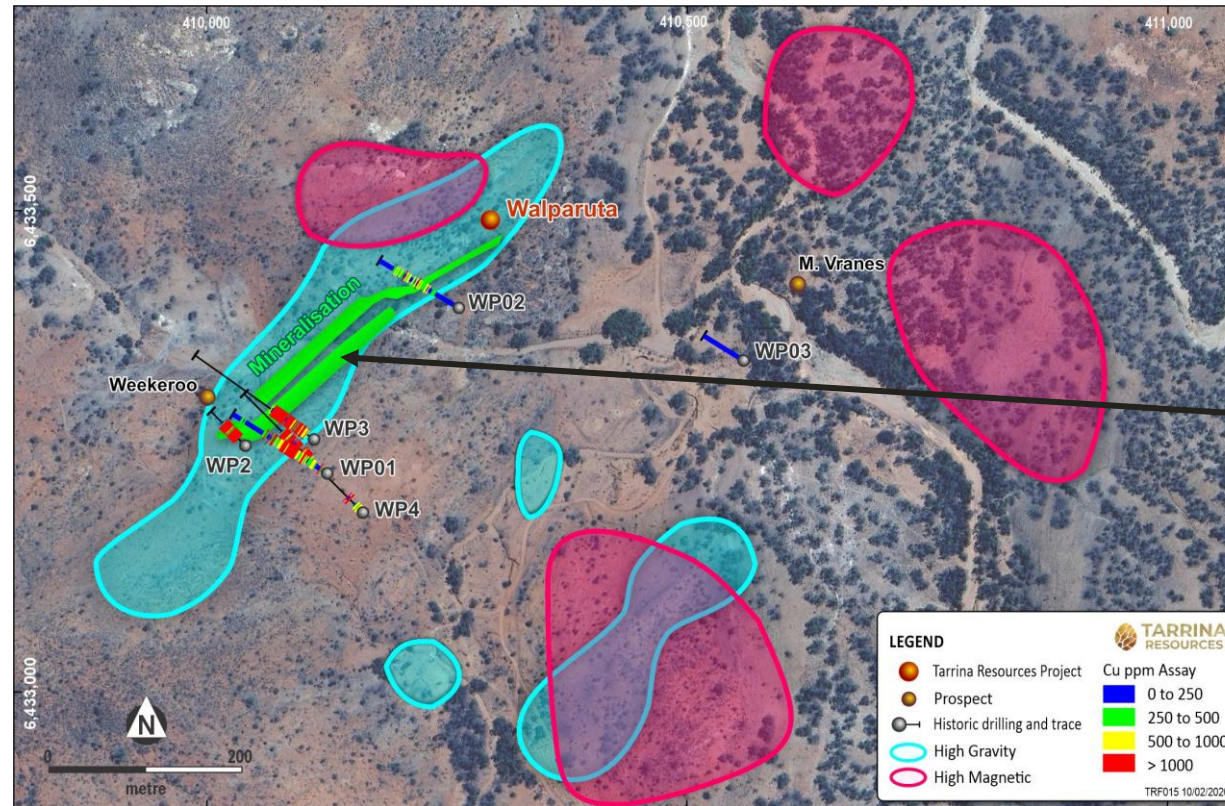
- Mineralisation and alteration exhibit higher magnetic intensity and density relative to host rocks.
- Metals include copper, gold, cobalt, uranium and rare earth elements.
- Ore minerals include chalcopyrite, pyrite, minor galena, cobaltite, bornite, uraninite, monazite, REE minerals, magnetite and hematite.
- Mineralisation associated with magnetite, biotite and K-feldspar alteration, albitised metasediments and hydrothermal breccias, consistent with IOCG systems.



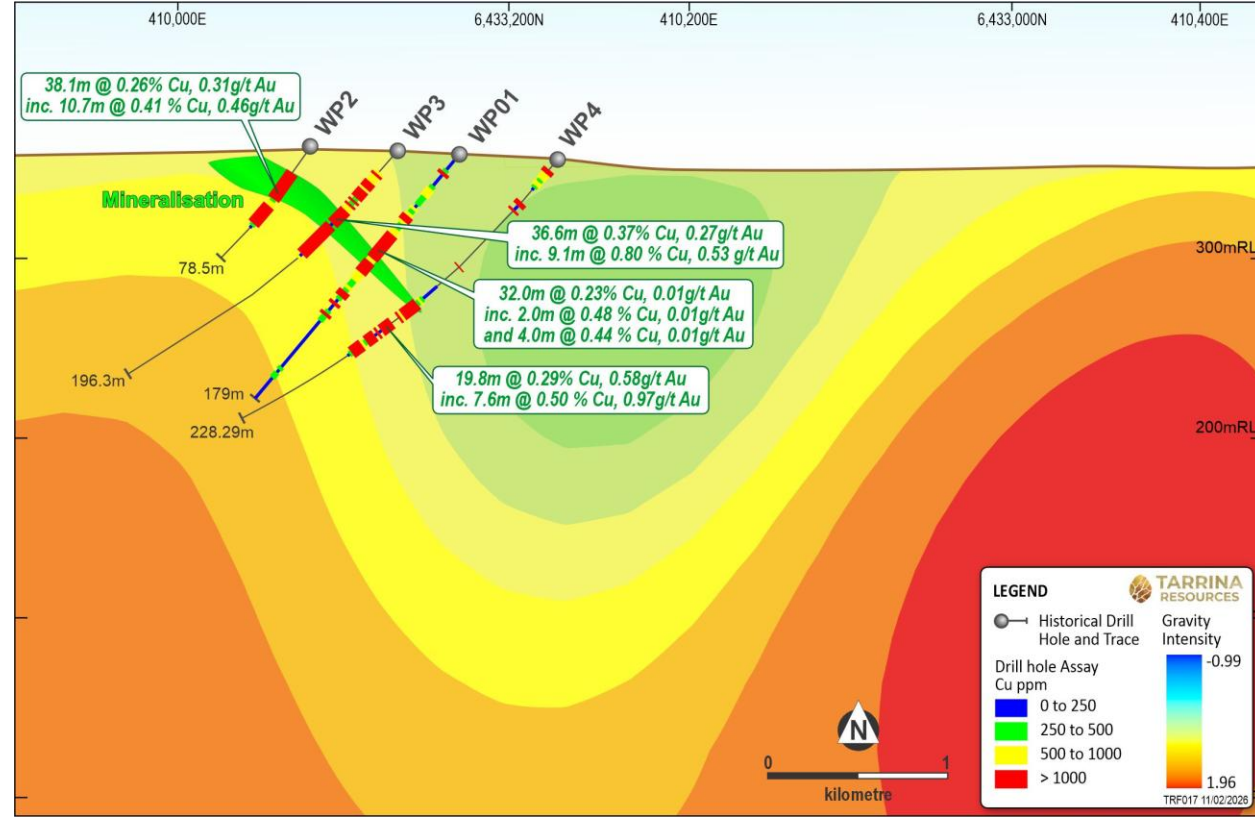
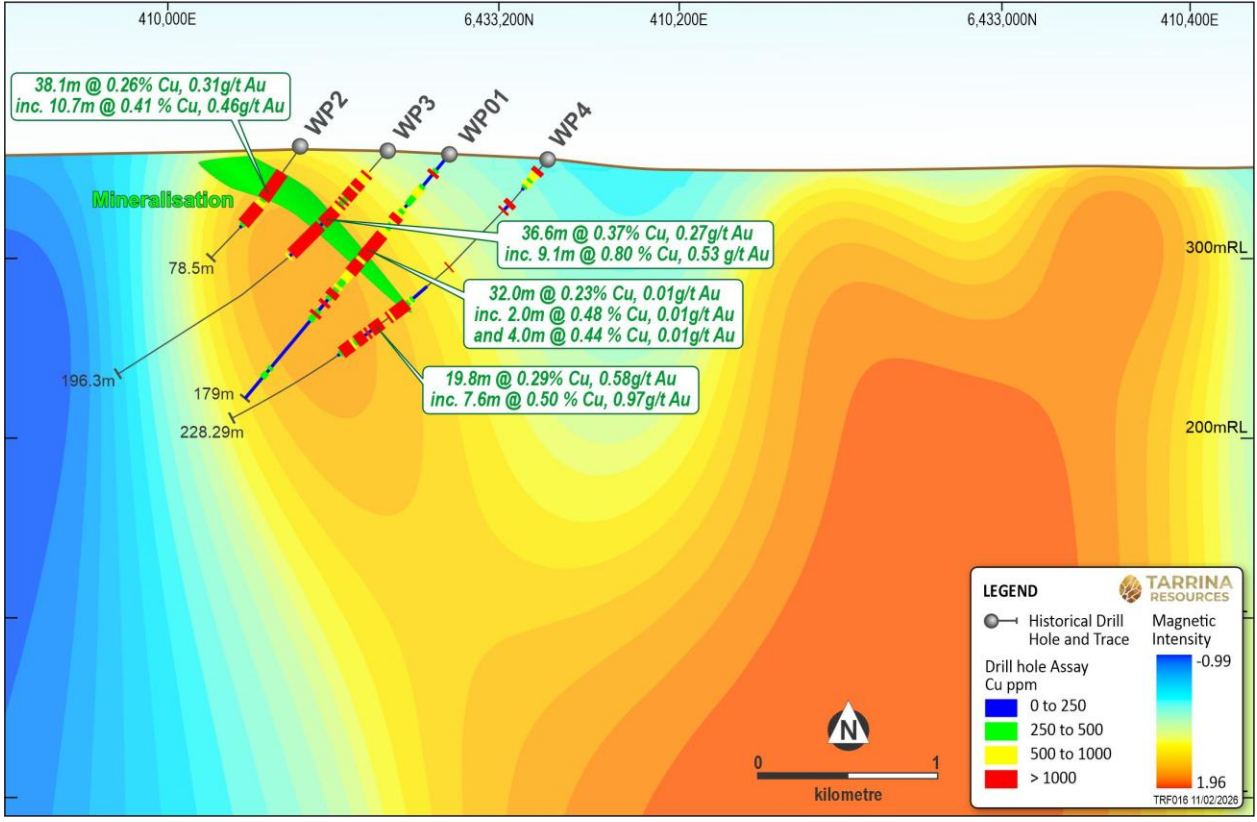
Walparuta Potential New Copper Discovery – 3D Targeting 4

3D Targeting

- Correlation between copper mineralisation and high magnetic susceptibility **allows direct detection of extensions to known mineralisation.**
- The mapped mineralised breccia corresponds to the edge of a significant magnetic anomaly with a **much larger anomaly extending down dip 400 metres to the south at a depth of 70m.**
- Also overlaps with a gravity high, which may be a **larger concealed IOCG system** that has not yet been tested by exploration.



Walparuta Potential New Copper Discovery – 3D Targeting 4



Potential For Walparuta To Be Even Bigger⁴

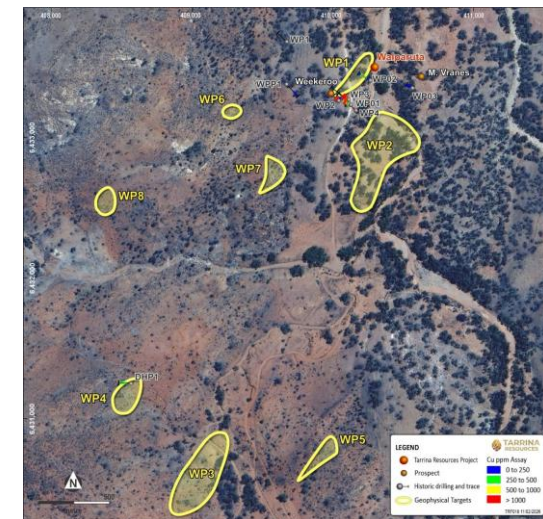
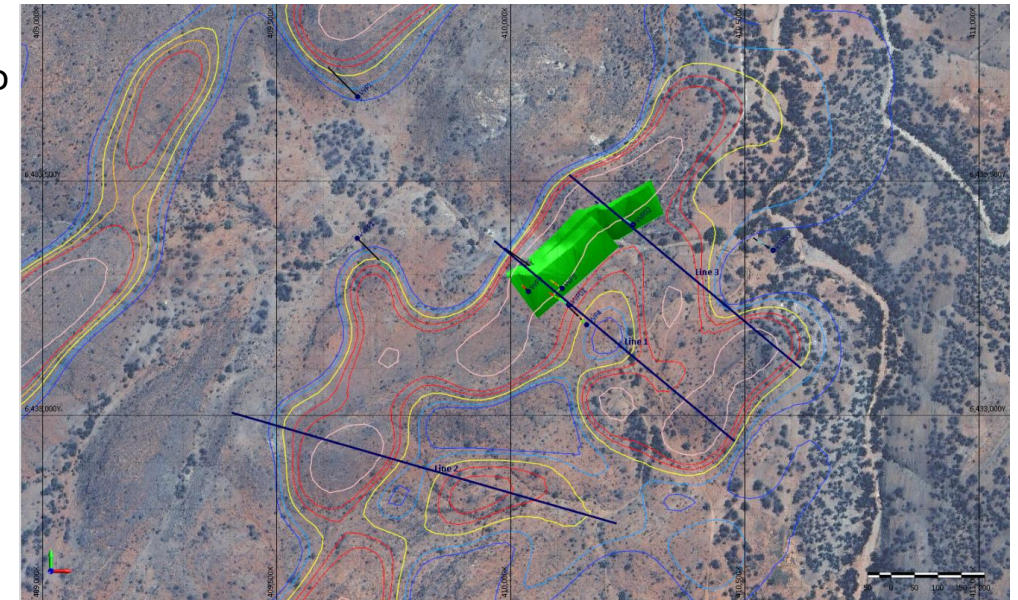
Next Steps

- Petrophysical data to be collected to assess the **potential to use geophysics data** to better define and target sulphide mineralisation. Field work underway.
- **Drilling to test the Walparuta IOCG-style targets will be a high priority after optimizing magnetic and gravity targets.**

Project Targets

- **Six additional coincident magnetic and gravity anomalies** outside the Walparuta mine area.
- None of these targets have historic exploration, with the exception of WP4, where historic drill hole DHP1 on the edge of the target area returned low-level anomalous copper. These targets are considered lower priority and will be advanced as the understanding of the Walparuta target potential continues to develop.

Target	Length m	Width m	Depth m	Top m	Comments
WP1	911	111	286	80	Mineralisation confirmed by historic drilling
WP2	1,907	280	707	58	Untested and appears to be depth continuation of WP1
WP3	1,537	250	384	102	Untested
WP4	721	160	260	89	Untested and low-grade copper in historic drilling
WP5	888	70	350	176	Untested
WP6	364	90	196	97	Untested
WP7	700	136	442	80	Untested
WP8	519	128	308	20	Untested



Walparuta Project – Compelling Targets For Discovery



IOCG Mineral System Confirmed

Contains important critical metals Cu, Au, Co, REE and U



Scale of Targets Confirmed

Historic drilling confirm wide intersections of Cu and Au. Co, REE and U not analysed



Direction Detection By Geophysics Confirmed

Magnetic and gravity data confirmed to correlate with Cu and Au



Close To Nearby Kalkaroo Deposit

Being Developed by Havilah Resources (1,100 Kt Cu, 3.1 M oz Au, 23Kt Co), Sandfire Resources supporting development



Metal Prices Change Economic Potential

Copper ~A\$8,500/t then vs ~A\$17,000/t today; gold ~A\$1,350/oz then vs A\$6,500/oz today.



Geophysical data analysis and diamond drilling planned to test most prospective targets





Yongala Project (SA) – Potential for Grass Roots Copper Discovery

Extensive Tenement Area

1,676 km² of underexplored ground with extensive cover

Copper-Silver Potential

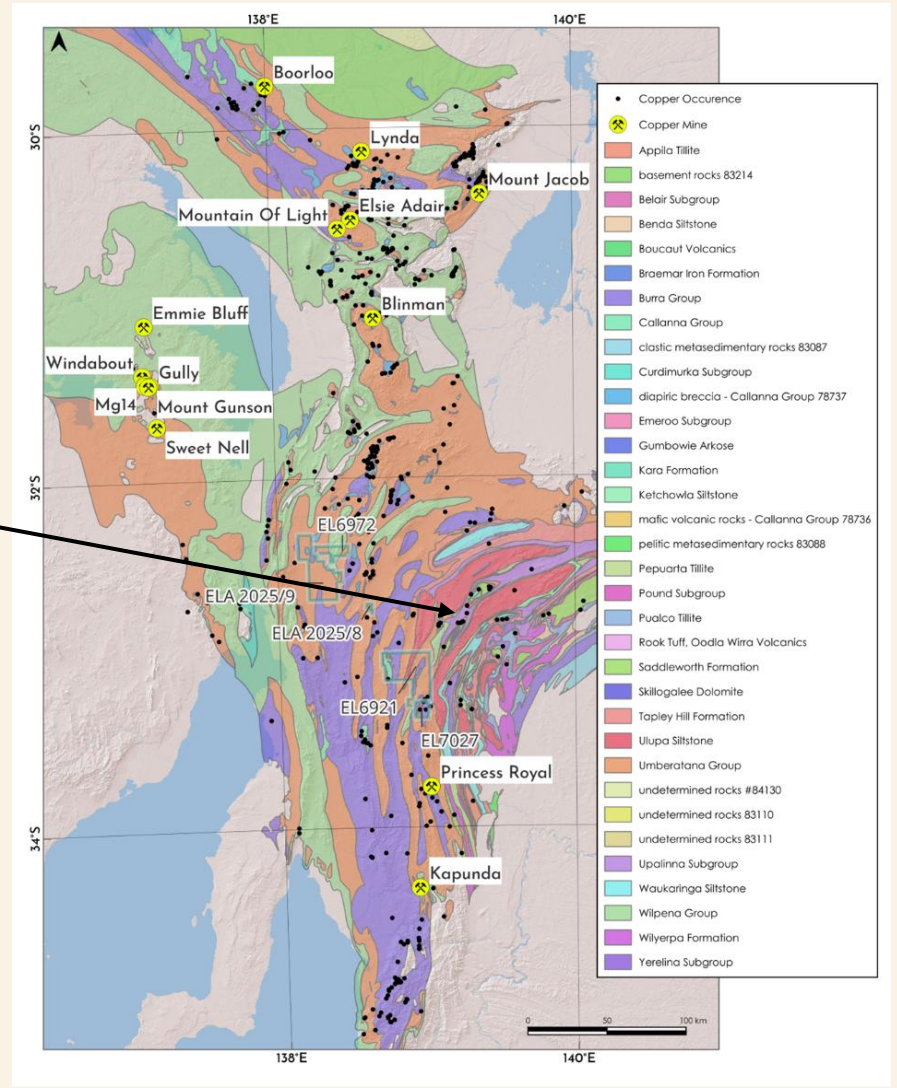
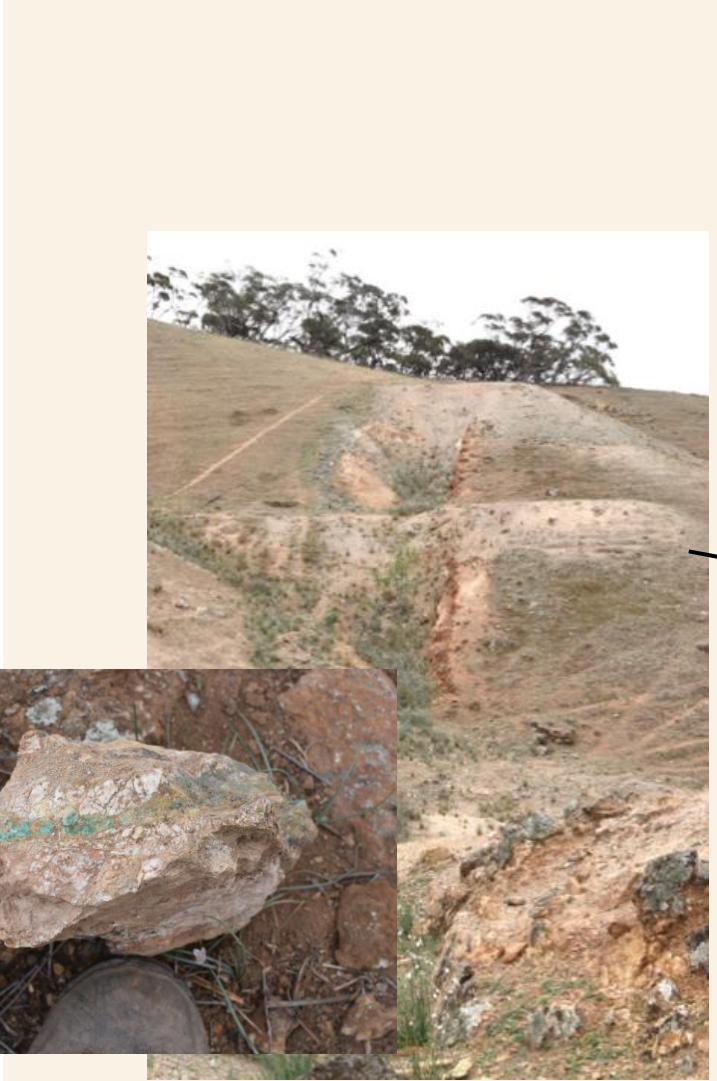
Highly prospective for sedimentary copper-silver mineralization, similar to the Kanmantoo copper mine operated by Hillgrove – 19.3 Mt at 0.77% Cu for 149,000 T of Cu.

Rare Earth Elements

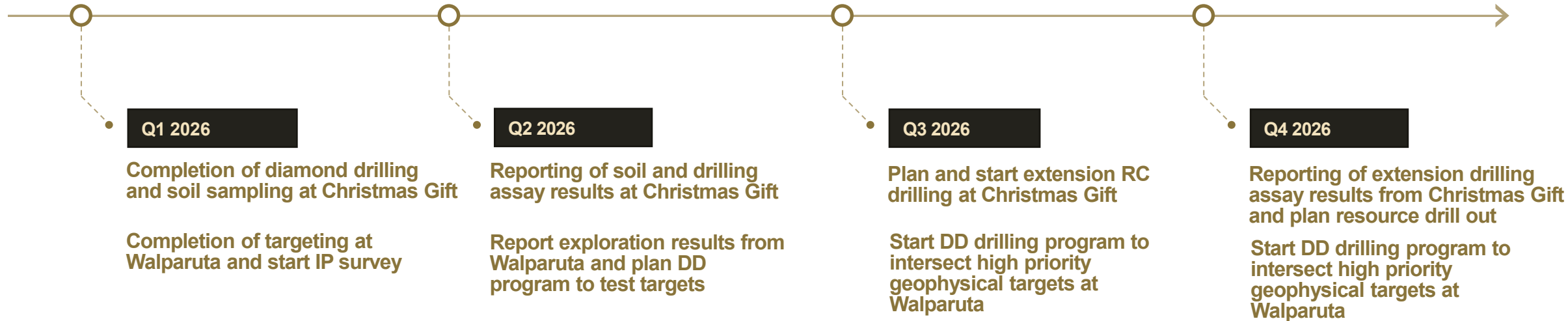
Prospective for carbonatite-related REEs

Promising Historic Results

Rock chip assays up to 10.8% Cu, 57.1g/t Ag, 0.35% TREO



Compelling Investment Opportunity Supported by Exploration News Flow ¹



- ✓ Advancement towards a maiden Mineral Resource Estimate at Christmas Gift
- ✓ Advancement towards new copper-gold IOCG discovery at Walparuta



**TARRINA
RESOURCES**

We look forward to sharing our journey as we develop our portfolio of Australian gold, copper and rare earth assets.

For more information, please contact see us at our booth.

Greg Partington

CEO

P 08 6158 9990

E info@tarrina.com.au

W www.tarrina.com.au

