

Corporate Presentation – May 2026

Mammoth Minerals

ASX : M79





DISCLAIMER

ASX : M79
Mammoth Minerals Limited

This presentation contains summary information about Mammoth Minerals Limited (Mammoth) (ACN 651 057 822) and is current as of cover date. The information in this presentation is of a general background and does not purport to be complete. This presentation is not investment or financial product advice (nor tax, accounting or legal advice) and is not intended to be used for the basis of making an investment decision.

The information contained in this presentation has been prepared without taking into account the objectives, financial situation or needs of individuals. Investors should obtain their own advice before making any investment decision. Mammoth has prepared this document based on information available to it at the time of preparation. No representation or warranty, express or implied, is made as to the fairness, accuracy or completeness of the information, opinions and conclusions contained in this presentation.

Forward-looking statements

This presentation contains certain “forward-looking statements”. Forward looking statements can generally be identified by the use of forward-looking words such as, “expect”, “should”, “could”, “may”, “predict”, “plan”, “will”, “believe”, “forecast”, “estimate”, “target” and other similar expressions. Indications of, and guidance on, future earnings and financial position and performance are also forward-looking statements.

Forward-looking statements, opinions and estimates provided in this presentation are based on assumptions and contingencies which are subject to change without notice, as are statements about market and industry trends, which are based on interpretations of current market conditions. Forward-looking statements including projections, guidance on future earnings and estimates are provided as a general guide only and should not be relied upon as an indication or guarantee of future performance.

This presentation contains statements that are subject to risk factors associated with Mammoth and the mining exploration industry. It is believed that the expectations reflected in these statements are reasonable, but they may be affected by a range of variables which could cause actual results or trends to differ materially. Mammoth disclaim any intent or obligation to publicly update any forward-looking statements, whether as a result of new information, future events or results or otherwise. To the maximum extent permitted by law, Mammoth, their related bodies corporate (as that term is defined in the Corporations Act 2001 (Cth)) and the officers, directors, employees, advisers and agents of those entities do not accept any responsibility or liability including, without limitation, any liability arising from fault or negligence on the part of any person, for any loss arising from the use of the presentation or its contents or otherwise arising in connection with it.

Competent Persons Statement

The information in this presentation that relates to the Exploration Results for Excelsior & Bella Gold Projects, Skyline Copper Project and Picha and Charaque Projects, Peru is based on information compiled and fairly represented by Mr Glenn Poole, who is a Member of the Australian Institute of Geoscientists and employee of Mammoth Minerals Ltd. Mr Poole has sufficient experience relevant to the style of mineralisation and type of deposit under consideration, and to the activity which he has undertaken, to qualify as a Competent Person as defined in the 2012 Edition of the Joint Ore Reserves Committee (JORC) Australasian Code for Reporting of Exploration Results, Mineral Resources and Ore Reserves. Mr Poole consents to the inclusion in this report of the matters based on this information in the form and context in which it appears.

The information in this presentation that relates to Exploration Results from the Excelsior & Bella Projects, USA, Picha & Charaque Projects, Peru and York Harbour Project, Newfoundland, Canada is extracted from the ASX announcements:

5 July 2023: Firetail signs binding terms sheet for acquisition of Peru Copper projects
14 November 2023: Encouraging First Assay Results from Picha Copper Project
5 February 2024: Significant polymetallic mineralisation at Picha Project
6 June 2024: Acquisition of York Harbour Copper Project, Canada
4 November 2024: Significant Grades Confirmed at Skyline
12 December 2024 : Exploration Gains momentum at Skyline Copper Project, Canada
16 December 2024: Drilling Extends High Grade Copper Mineralisation at Skyline
28 January 2025: New Target Identified at Picha Project, Peru
3 February 2025: Drill Results Set Stage for Growth at Skyline
10 February 2025: Multiple Substantial EM Conductors Defined at Skyline
9 April 2025: Exploration to refine porphyry potential at Picha Copper Project, Peru
2 June 2025 : Option Secured to Acquire Two High-Grade USA Gold Projects
18 June 2025 : Prospecting Identifies Copper Target Cover 800m Strike
24 July 2025 Geophysics strengthens porphyry potential at Picha Project
25 July 2025 Significant Landholding Increase at Excelsior Gold Project
29 July 2025 Geophysics Expands Discovery Potential at Excelsior Gold
20 August 2025: Exploration commences targeting high-grade gold at Bella
26 August 2025: Second Phase of High-Impact Field Exploration Commences at Excelsior Au-Ag Project
4 September 2025: Mammoth to Divest Paterson Cu-Au Project
25 September 2025: Geophysics Outlines Major Intrusive Target at Picha Project
7 November 2025: High-Grade Results Expand Blue Dick Trend, Nevada
11 November 2025: Significant Landholding Staked at Excelsior Project, Nevada
24 November 2025 : High-Grade Intercepts Extend Mineralisation at Excelsior Gold Project
26 November 2025 : Magnetics unveils multitude of targets at Excelsior
4 February 2026 : Drill results redefine Gold System at Excelsior
9 February 2026 : Patterson Divestment Completes as RC Drilling Accelerates
10 March 2026 : Acquisition of Historic Carlin Type Gold Mine, Nevada
18 March 2026 : RC Drill Results Expand Buster Gold Trend, Nevada
9 April 2026: Multiple High Grade Targets identified at Excelsior

These announcements are available to view on the Company's website (mammothminerals.com.au). The Company confirms that it is not aware of any new information or data that materially affects the information included in the original market announcements and that all the material assumptions and technical parameters continue to apply and have not materially changed. The Company confirms that the form and context in which the Competent Person's findings are presented have not been materially modified from the original market announcement.

This presentation has been authorised for release by the Board of Directors



Directors & Key Management

COLLECTIVELY INVOLVED IN THE DISCOVERY OF >10Moz Au

BOARD OF DIRECTORS

Rob Jewson

EXECUTIVE CHAIR

Rob has a wealth of experience globally in corporate transactions, exploration and operational geology roles across the global mining sector. He brings over 19 years of experience specialising in identifying geological opportunities, developing project portfolios and commercialising resource projects. Mr Jewson has been involved in multiple significant gold and mineral discoveries.

Glenn Poole

MANAGING DIRECTOR & CEO

Glenn is an experience geologist with a proven track record in discovery and revitalising mineral assets for ASX-listed Exploration and mining companies. He has held management roles at Firefly Resources, Superior Gold and Northern Star and Executive roles at Greenstone Resources. Mr Poole has been involved in the discovery and development of multiple gold and base metal resources.

Simon Lawson

NON-EXECUTIVE DIRECTOR

Simon is a Mining Executive with over 20 years industry experience, in both technical and corporate capacities. Most recently leading Spartan Resources to a \$2.4b Merger with Ramelius Resources and has a strong track record of value creation through discovery and asset development. Mr Lawson also acts as Non-exec Deputy Chair for Ramelius, Non-Exec Director for Gorilla Gold. Mr Lawson also held senior management positions at Northern Star Resources

Kevin Puil

NON-EXECUTIVE DIRECTOR

Mr. Puil is the Managing Partner of US-based RIVI Capital LLC, a private equity firm specialising in precious metals. With over 25 years of experience in the resource investment sector, he brings a wealth of expertise as a former fund manager and investment analyst. Mr. Puil has significant experience in corporate governance, having served as an independent director for multiple mining companies. Mr. Puil currently serves a non-exec director at Dakota Gold (NYSE:DC)

MANAGEMENT & TECH TEAM

Craig McNab

CFO/Co-Sec

Craig McNab, a Chartered Accountant and Governance Institute Fellow, has 15+ years of experience in resources and accounting across Australia, New Zealand and the UK. Formerly with PwC, De Beers and Anglo American, he now focuses on corporate compliance and financial accounting for ASX-listed companies, including IPO management.

Alison Dines

EXPLORATION MANAGER

Alison is an exploration geologist with 15+ years in junior mining, working across various commodities and deposit types. Alison brings a strong technical focus in addition to extensive experience planning and executing drilling and exploration programs. Alison has greenfields and brownfields experience with gold, copper, lithium and base metal deposit types across global operating jurisdictions.

Jhony Vargas

PROJECT MANAGER - PERU

Jhony, an exploration geologist with 13+ years of experience, specialises in skarn, porphyry, epithermal and polymetallic vein deposits. He has worked on exploration projects in Peru with Kuya Silver, Miramont Resources and Newmont Goldcorp, among others. Jhony has been leading the Peruvian exploration team since 2021 across both the Picha and Charaque assets.



Corporate Overview

ASX-M79

\$40m

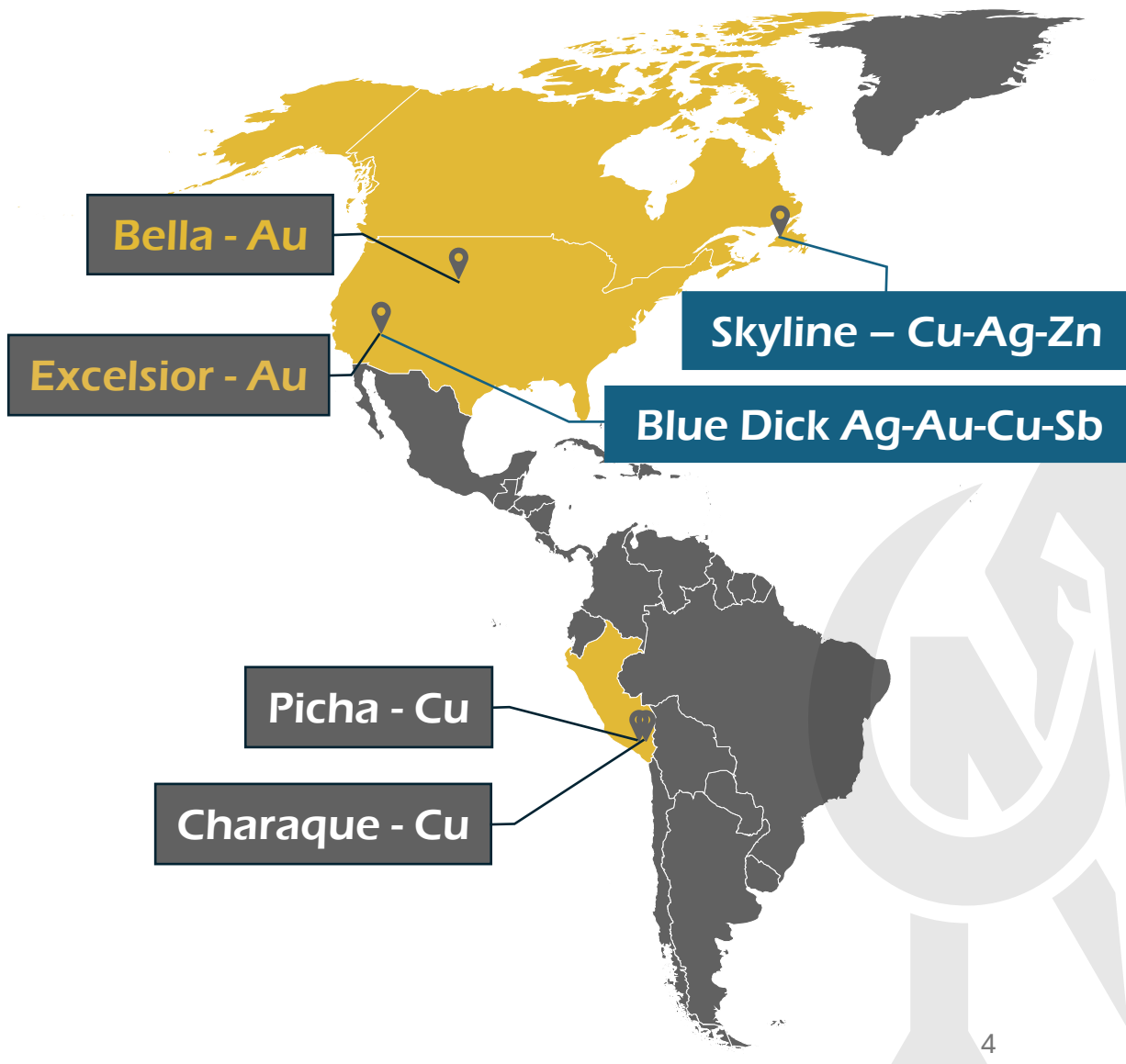
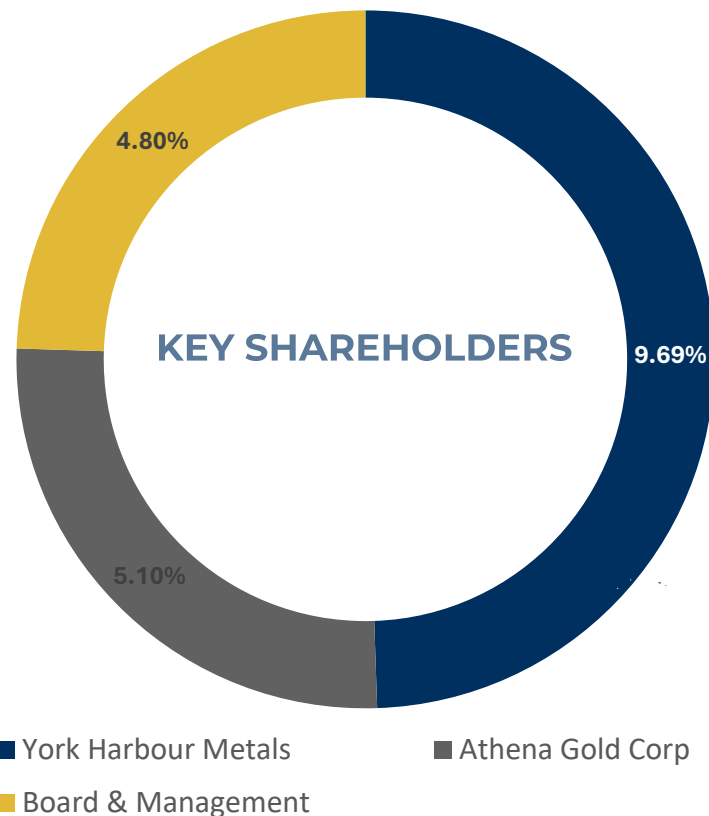
Market Cap
(Share Price \$0.071 (5th May 2026))

559m

Total Shares

97.4m

Options
Plus 11.7M Performance Rights



Key Value Drivers

1. RC Drilling programs targeting resource definition and extension drilling across the 7km long Buster Trend, with recent drilling including 33.5m @ 1.25g/t from surface

2. Advancing pipeline of targets across the Excelsior Land holding, including **Blue Dick, Kentucky, Imperial** Prospects, to drill ready status through targeting mapping and sampling programs.

3. **Critical Minerals Exposure**
Targets advancing across the Excelsior Springs host significant Silver, Antimony and Copper results in addition to Gold

4. **Definition of priority targets for drilling opportunities in South Dakota.** Open file data search aiming to recover underground mining and exploration records from Standby Mine

5. **Non-core asset divestment strategy** to support USA gold and precious metal focus
– Paterson divestment(C.\$3m)
Active discussions underway for divestment of Picha Copper and Skyline Copper-Silver-Zinc assets



Value Proposition - Gold

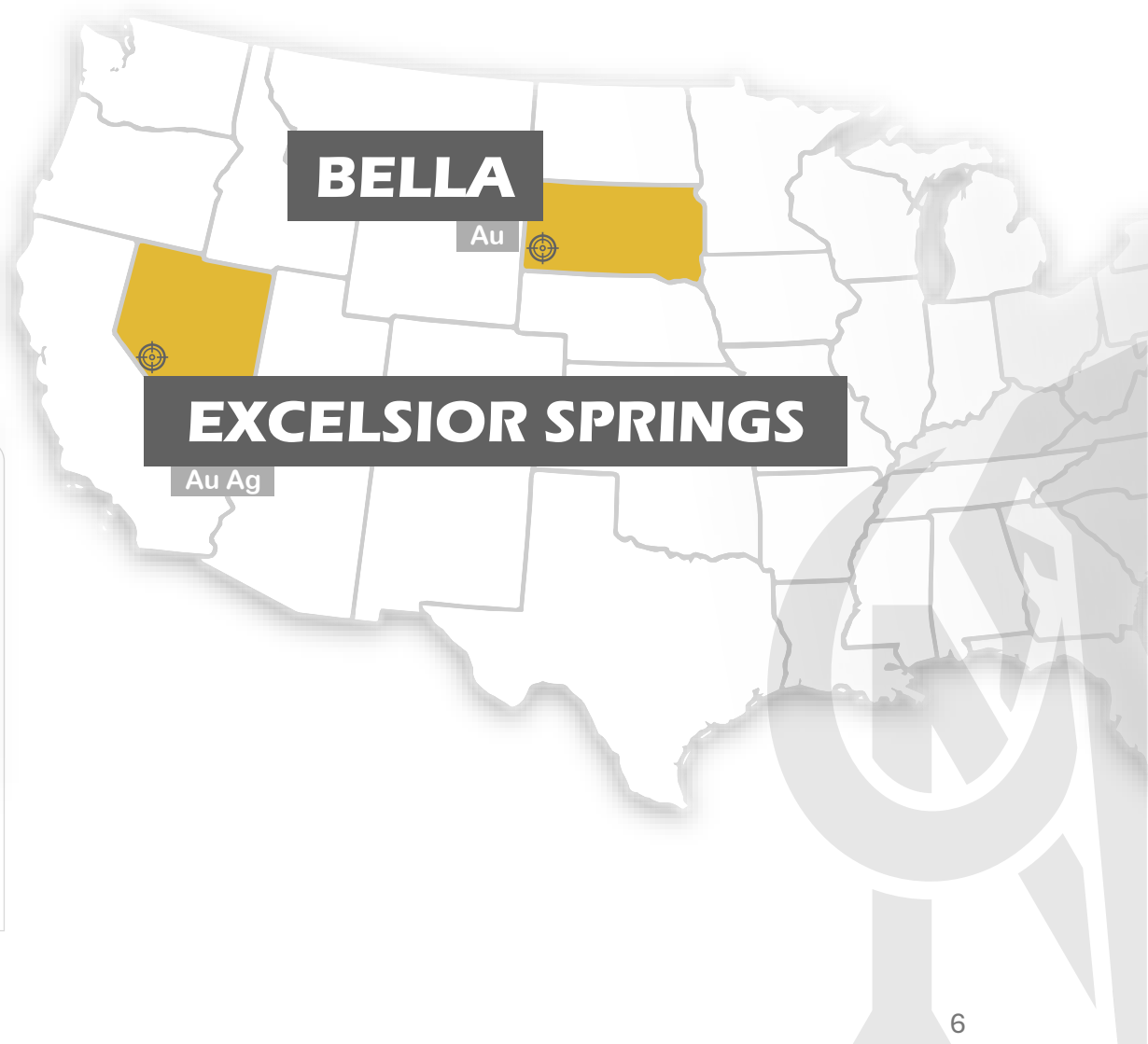
Substantial Exposure to High-Grade USA Gold Projects



Excelsior Springs
Nevada, USA



Bella
South Dakota, USA



Nevada - The Heart of Gold Mining in USA

World-Class Endowment and Production

- Walker Lane Tectonic Zone is a **40-100km wide structural corridor** extending south-easterly from Reno towards Las Vegas - it has **produced >40Moz Au**
- **Diverse range of Gold deposit styles with Nevada representing over 70% of US production in 2024¹**
- In contrast with other well-endowed and notable trends in Nevada, Walker Lane has comparatively far **higher average mineral deposit grades**
- Recent M&A Activity in the Walker Lane within 100km radius of Excelsior^{1,2,3,4}
 - Goldfield Project **US\$206m** (US\$279/oz Au) 706k oz. Au @ 0.71g/t Au resource
 - Crown Sterling **US\$150m** (US\$164/oz Au) 914k oz. Au @ 0.78g/t Au resource
 - Northern Bullfrog **US\$450m** (US\$170/oz Au) 1.46m oz. Au @ 1.65g/t Au resource
 - Reward/Bullfrog **US\$134m** (US\$82/oz Au) 1.64m oz. Au @ 1.13g/t Au resource
- **Actively explored, developed and operated by majors, including:**
 - Anglo Gold – Silicon-Merlin/Bullfrog
 - Kinross Gold – Bald/Round Mountain
 - Teck Resources – Gold Point
 - Centerra Gold - Goldfield

Operating Environment Cost Structure

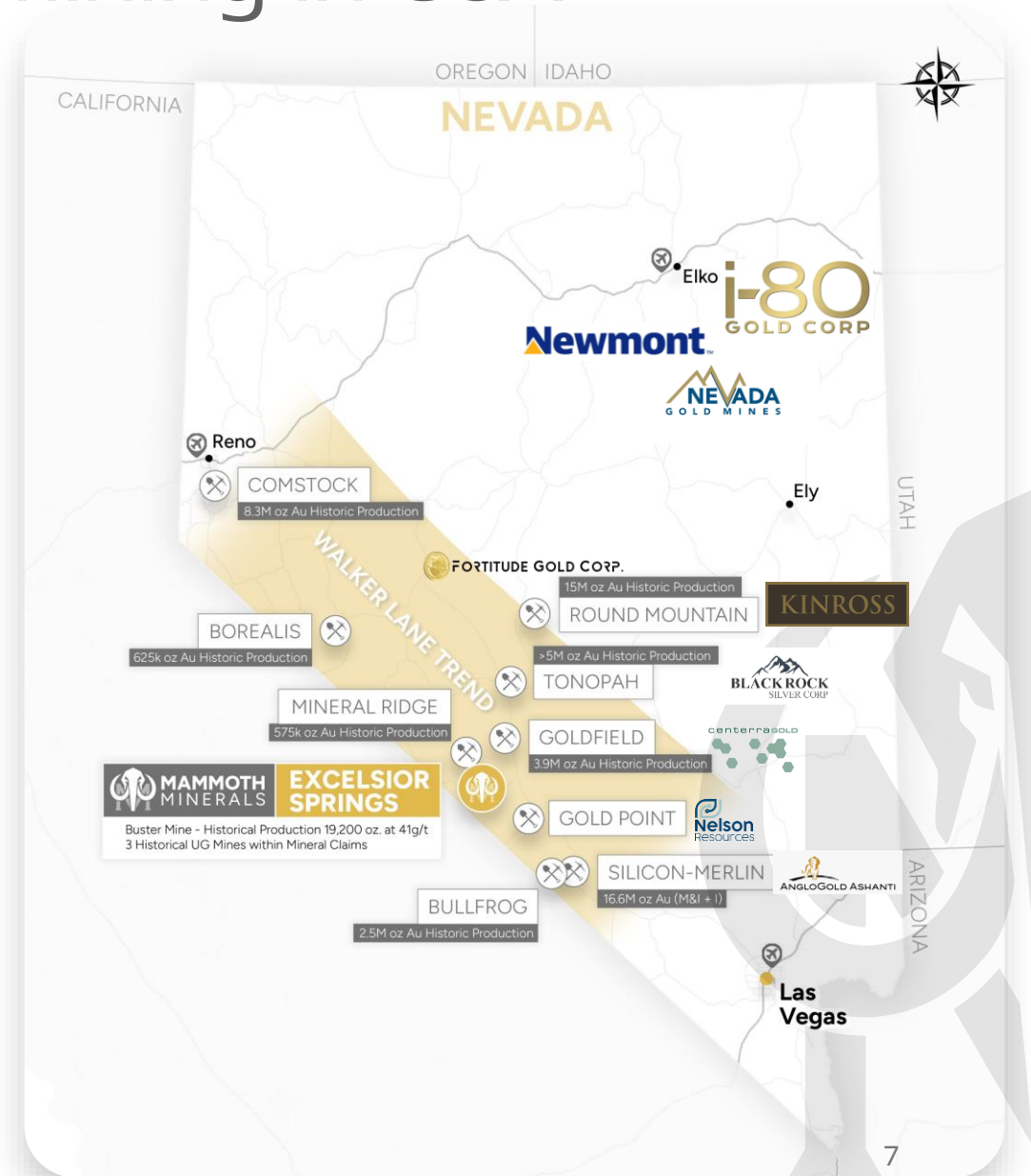
- **Consistently rated by the Fraser Institute as a top operating jurisdiction globally**
- Local skilled labour force supporting exploration and mining activities
- **Favourable geological setting and operating cost structure** means that even extremely low-grade heap leach operations are viable in Nevada -

23/2/2022 – TSX: CG - Centerra Gold Announces Acquisition of the Goldfield District Development Project in Nevada

19/9/2022 – NYSE : CDE - Coeur Announces Agreement to Sell Southern Nevada Holdings for Upfront Cash Consideration of \$150 million

16/7/2025 - NYSE: AU - AngloGold Ashanti Agrees to Acquire Augusta Gold to Further Consolidate Nevada District

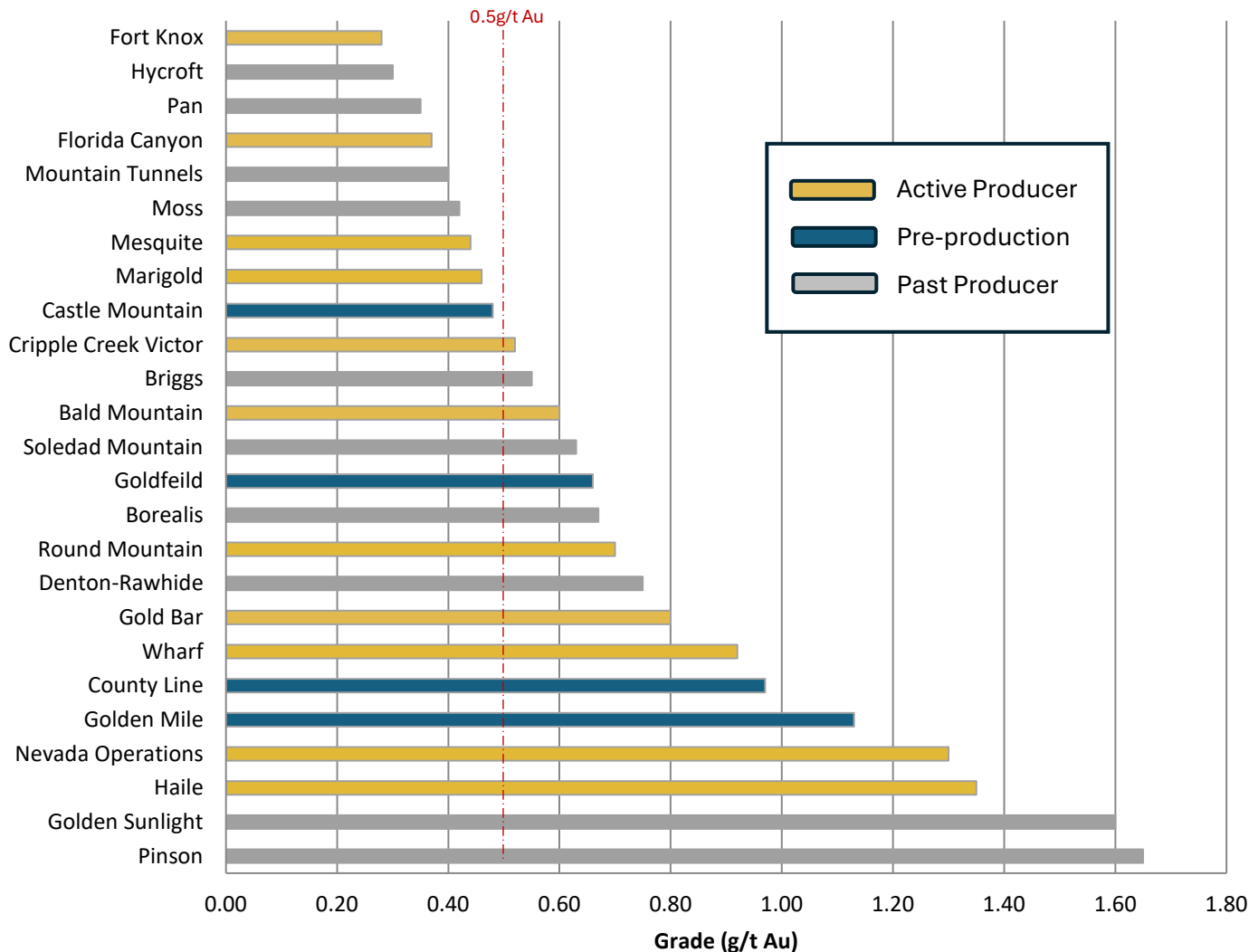
13/9/2021 - NYSE: AU - AngloGold Ashanti Signs Definitive Agreement to Acquire Corvus and Consolidate the Beatty District of Nevada





Heap leach– Metrics in Focus

US Open Pit Gold Mines – Heap leach Dominated Reserve/Resource Grade (g/t Au)*

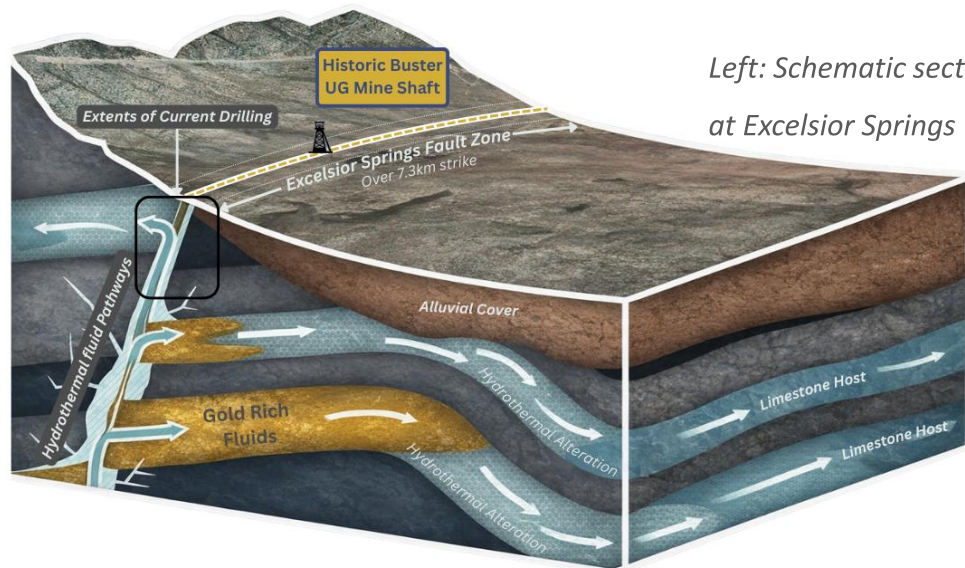


- **Heap leach Extraction employed across numerous US states and global mining jurisdictions since inception and widespread adoption in 1960s**
- Highly altered rocks and/or weathered rocks of Nevada Great Basin, typical of Carlin-type mineralisation **amenable** to heap leaching methods
- Typically, Lower Cap-Ex/Low Op-Ex metrics support lower grade operations – Industry average of 0.5g/t
- **Heap Leach Operations support Nevada being a Top 5 Global Gold Producer as a standalone state*.**
- Heap Leach Recovery accounts for over 30% of Global Gold and Copper Production
- Gold recoveries up to 95% via heap leach treatment
- Scalable due to simple design and operations

*Source: Select current and recent past producing mines S&P Market Intelligence

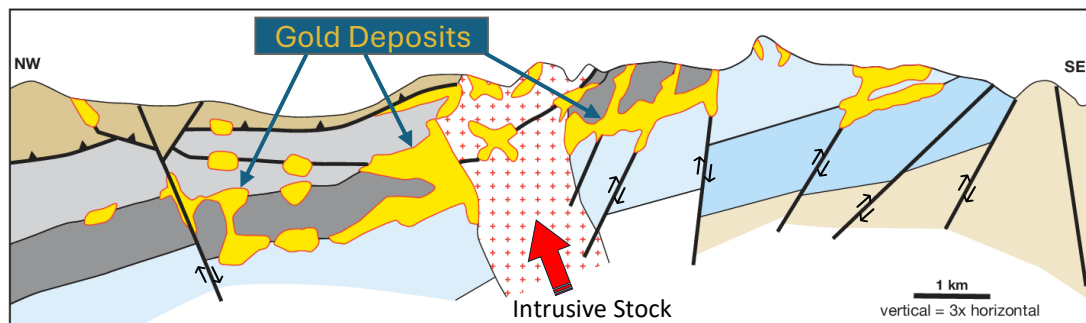


Great (Basin) Opportunity



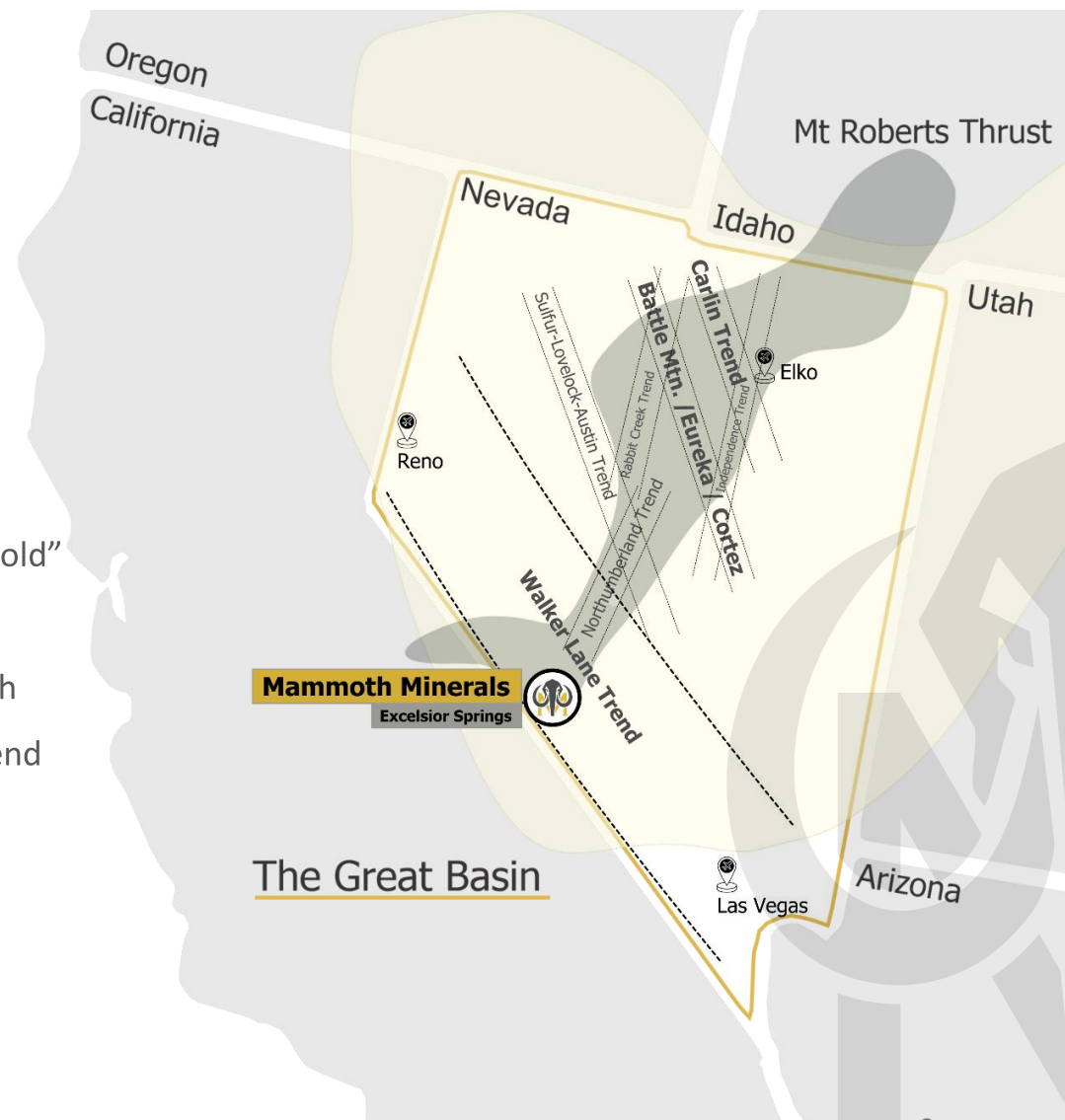
Left: Schematic section of Buster Zone at Excelsior Springs

- Carlin Type Gold Deposits (CTGD) Model develop in 1960s – Unpannable “invisible gold”
- CTGD’s already host 255m oz. of Gold in Nevada, all discovered in the last 60 years!
- Mt Roberts sequence offers a sequence of highly permeable sediments – Heap Leach
- Diamond drilling has highlighted presence of key Carlin-Type indicators at Buster Trend



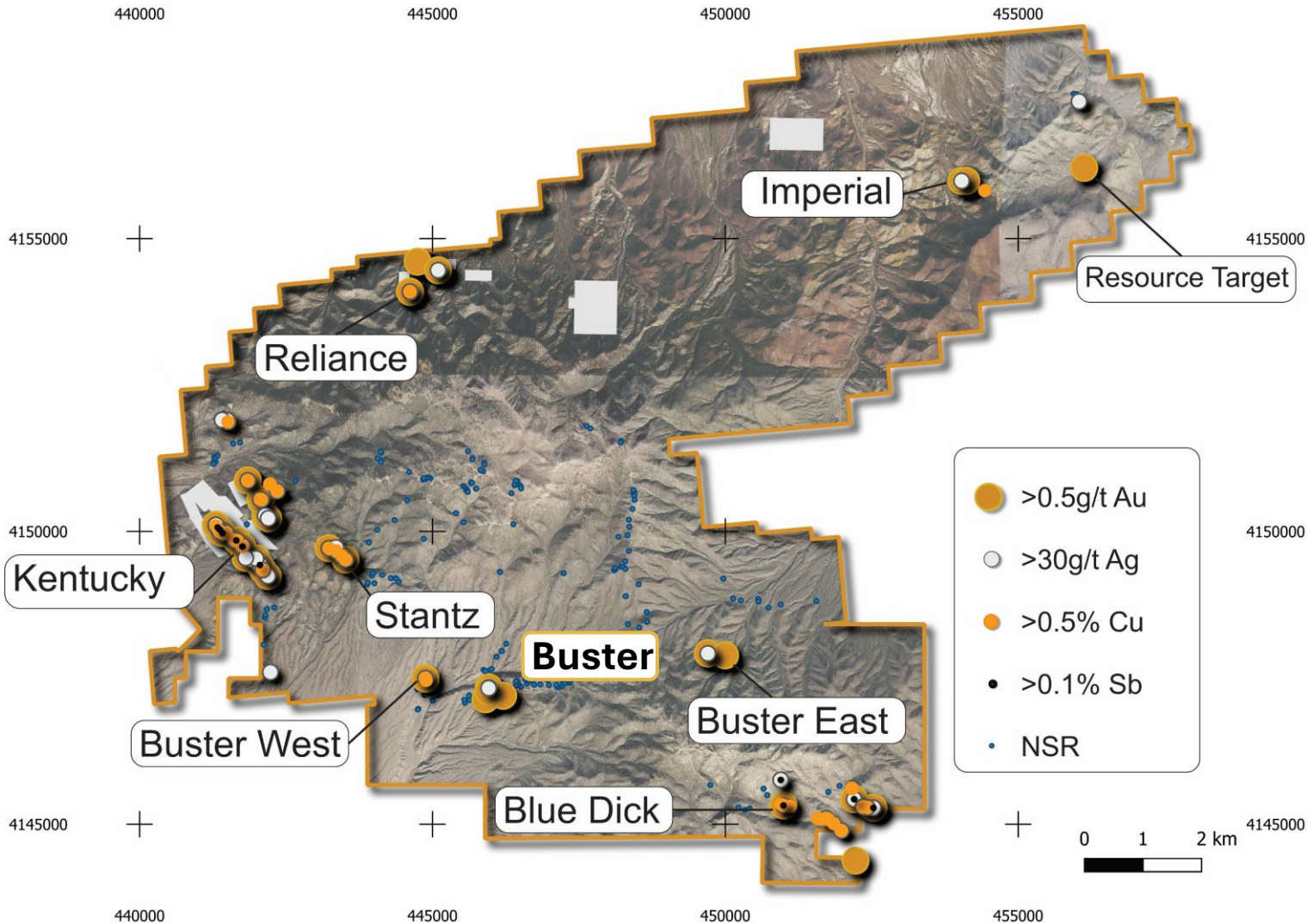
Above: Schematic Cross section of Basin and Range Block Movement providing fluid pathways

Building Blocks of multimillion ounce deposits





Commanding Land Position



Over 135km² of Highly prospective claims in a proven mineral district

- **Intrusive geology creating architecture in favourable lithology – Carlin-Type Limestones and Sandstones**
- **Similar geology and deposit model to nearby Goldfield Caldera 35km north-east of Excelsior Project⁵**
 - Over 4.2Moz produced, restarting production
- **Potential to host multiple styles of mineralisation**
 - **Stratabound (Carlin), Intrusive, Carbonate replacement, Epithermal and structurally controlled (Fault) hosted**
- **Abundant Mineral occurrences coincidental with intrusive architecture – Gold, Silver, Antimony, Copper**
- **7 Prospect zones with room to discover more**
 - **Targeted field campaigns ongoing**

⁵Refer to www.a2gold.com/en/projects/west-goldfield/



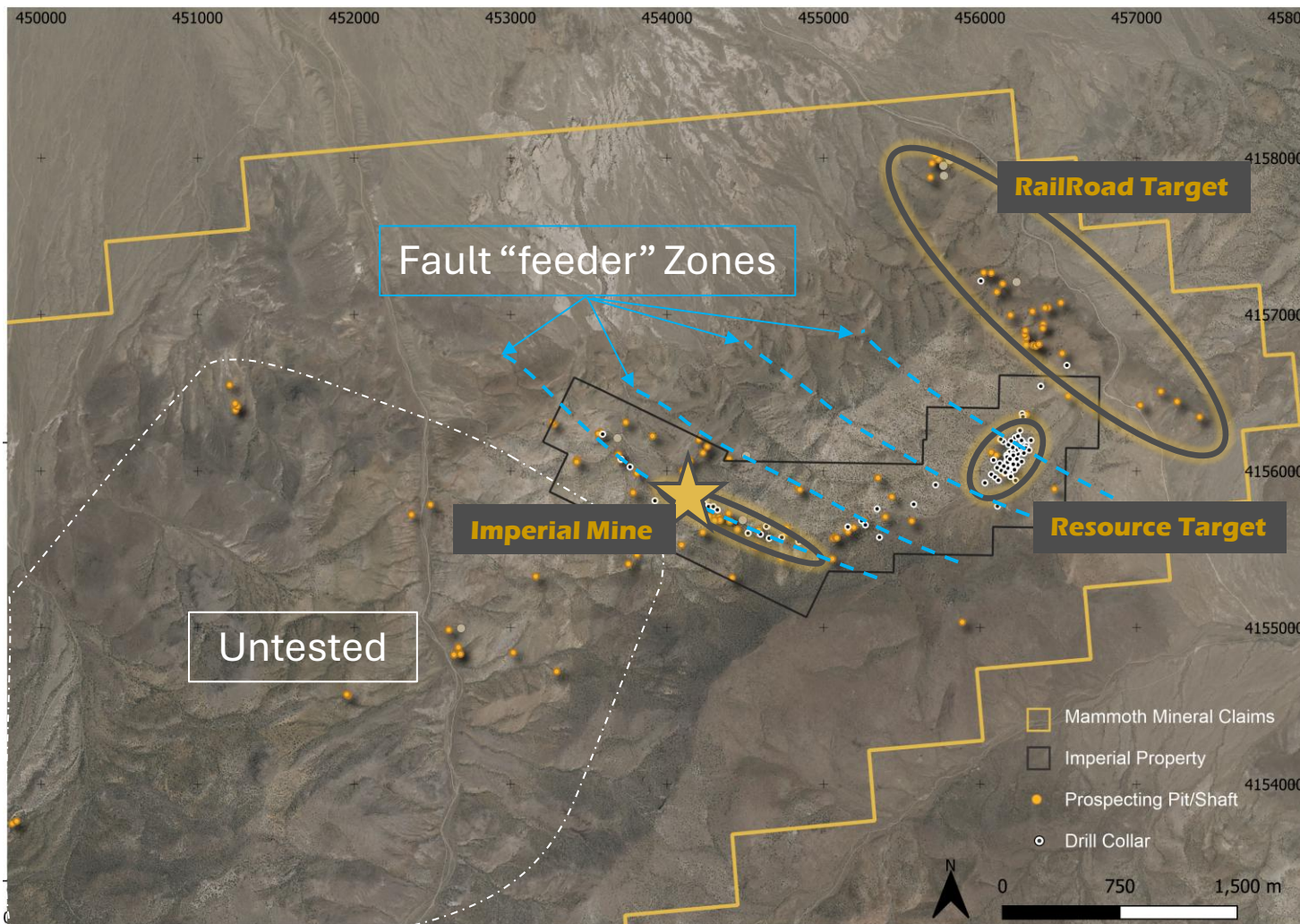
Buster Gold Trend

- Drill-proven high-grade gold mineralisation
- 7km strike length and 200-400m wide zone based on drilling, geochemistry and geophysics
- Historic Buster Mine produced 19Koz Au at 41g/t Au
 - Previously mined shallow and surface exposures
 - Historically utilised small scale, boutique mining methods – growth opportunity
- Phase 1 RC Drilling completed infilling and extending known areas of mineralisation – Grading from Surface
- Pending MRE and Exploration Target for Buster Zone
 - Targeted drilling program being devised to delineate extensions and test high priority targets





Imperial Opportunities



- **Historic Gold mine – ceased at commencement WWII**
- Sediment host, alteration and mineralisation mapped support “Carlin-style” mineralisation
- Over 6.5km of drilling completed across 2 target zones
- Parallel Target Zones identified at Imperial Mine
 - Repeating structures for mineralising fluids
- Geophysics highlights further potential targets and extensions into newly staked ground

Significant Drill results include:

- 28.96m at 2.23g/t Au from 3.05m – IR-29
- 13.72m at 4.74g/t Au from 30.48m – IR-4
 - Incl. 3.05m at 15.61g/t from 32m
- 10.67m at 2.48g/t Au from surface- IR-22
- 10.67m at 1.68g/t Au from surface – LRC-90-4

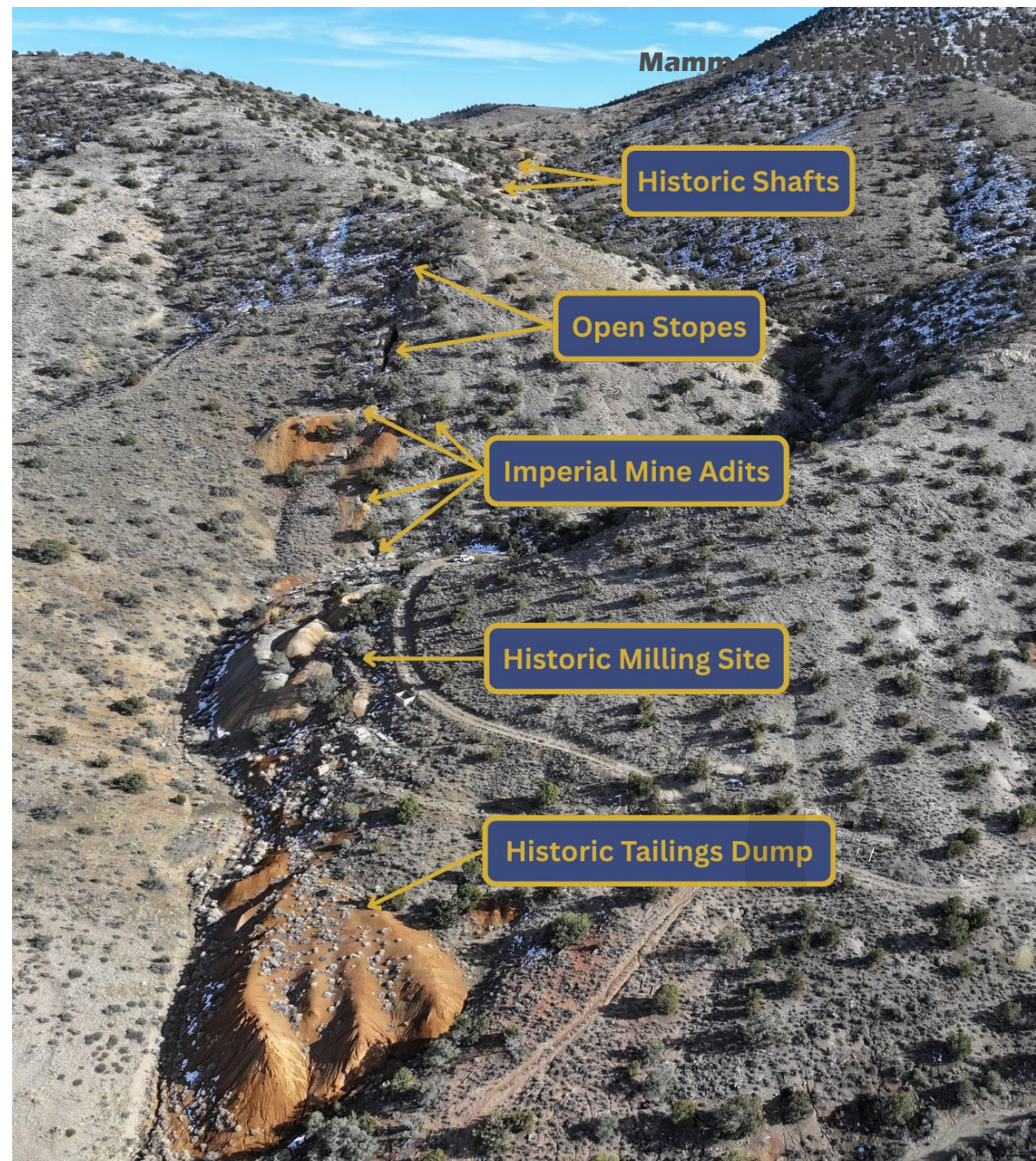
¹Refer to ASX Ann. “Mammoth Strengthens Nevada Gold Portfolio with Acquisition of Carlin Type Gold Mine” 10/3/2026



Nevada, USA - Gold

Imperial Gold Mine

- Significant UG workings exposed at Surface
- Historic Gold Extracted on Site via VAT leaching
 - Pre-cursor to conventional heap leach methods
- Imperial Mine has a strike of over 1.3km of adits and historic shafts
- Historic production of approx. **10kt at over 15g/t Au**
- Historic Adit Sampling results include:
 - **0.76m at 237.51 g/t Au** – IUA175
 - **1.22m at 15.77g/t Au** – IUA10
 - **0.76m at 47.17g/t Au** – IUA128
 - **0.91m at 19.13g/t Au** – IUA120
 - **0.91m at 15.46g/t Au** – IUA510
- Walk up drill targets on down dip and along strike extensions
 - Planning for Permitting underway across multiple targets underway

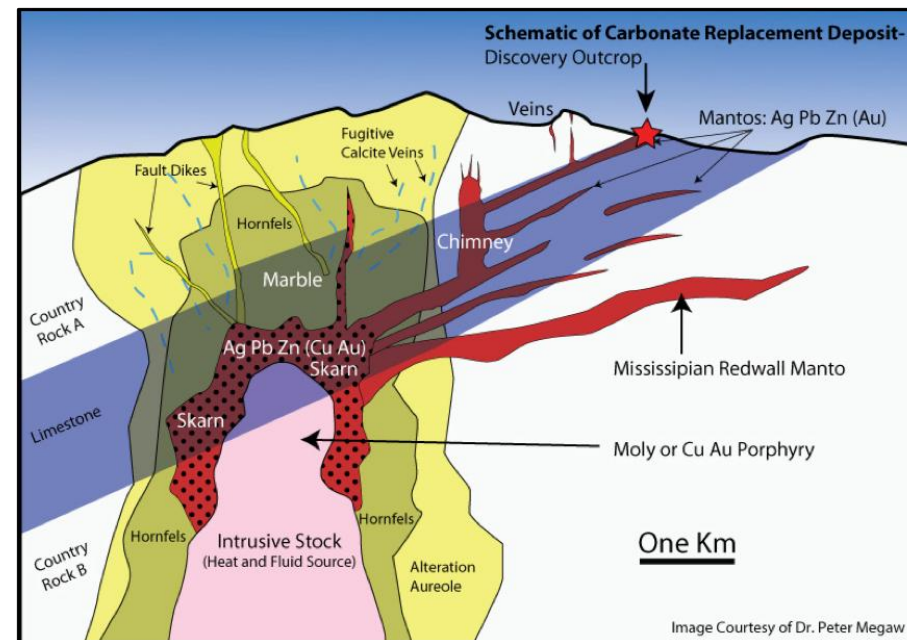




Blue Dick Trend– Critical Minerals in Focus



- Gold/Silver-Lead-Zinc Carbonate Replacement type deposit (CRD)
- Significant stope fronts open to surface
 - Limited Mining Extents – **Open strike**
 - Shallow development – **Open at Depth**
- Zones of Mineralisation typical of CRD^{1,2}
 - **Gold Grades up to 42g/t Au**
 - **Silver Grades up to 5,980g/t Ag,**
 - **Antimony Grades up to 1.9% Sb**
 - **Copper Grades up to 8.07% Cu,**
 - **Zinc Grades up 9.8% Zn**
 - **Lead Grades over 20% Pb**



Above: Blue Dick ore sample¹

Left : Mineralised zone in Underground workings

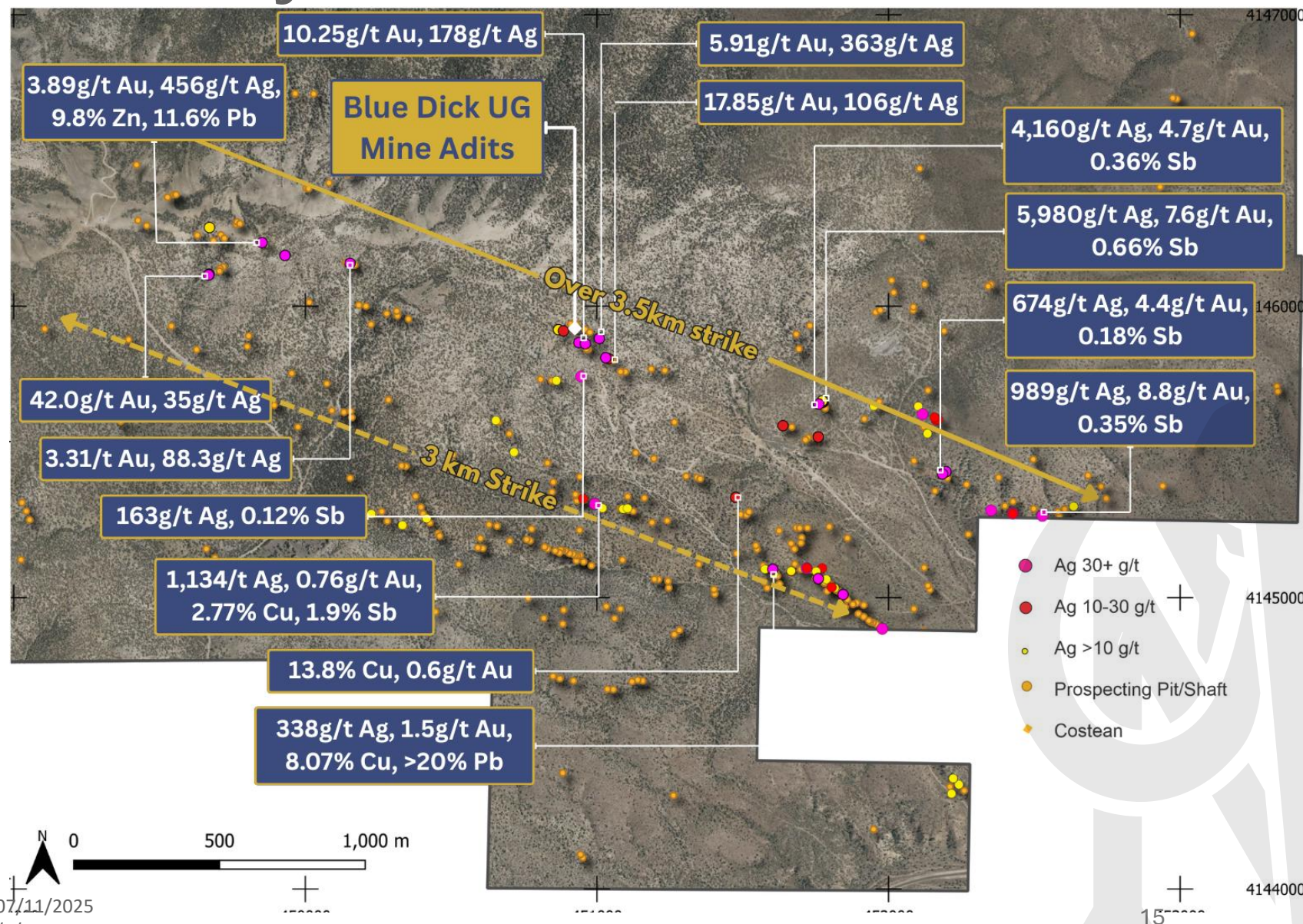
¹Refer to ASX Ann. “High-Grade Results Expand Blue Dick Trend, Nevada” 07/11/2025

²Refer to ASX Ann. “Multiple High-Grade Targets identified at Excelsior” 9/4/2026



Blue Dick Polymetallic System

- Yet to be drill tested precious and base metal opportunity – Permitting underway
- High-grade polymetallic vein system underpinned by significant gold values
- Cumulative strike length of over 7km of historic workings with room to grow
- Recent sampling highlights grade potential¹
 - 5,980g/t Ag, 7.65g/t Au, 0.66% Sb – C110873
 - 1,134/t Ag, 0.76g/t Au, 1.9% Sb – MREX00437
 - 989g/t Ag, 8.8g/t Au, 0.35% Sb – MREX00422
 - 363g/t Ag, 5.91g/t Au, 5.76% Zn – C110888
 - 35g/t Ag, 42.1g/t Au – C23912



¹Refer to ASX Ann. "High-Grade Results Expand Blue Dick Trend, Nevada" 07/11/2025

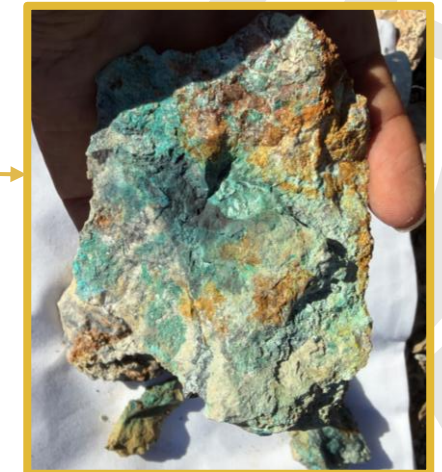
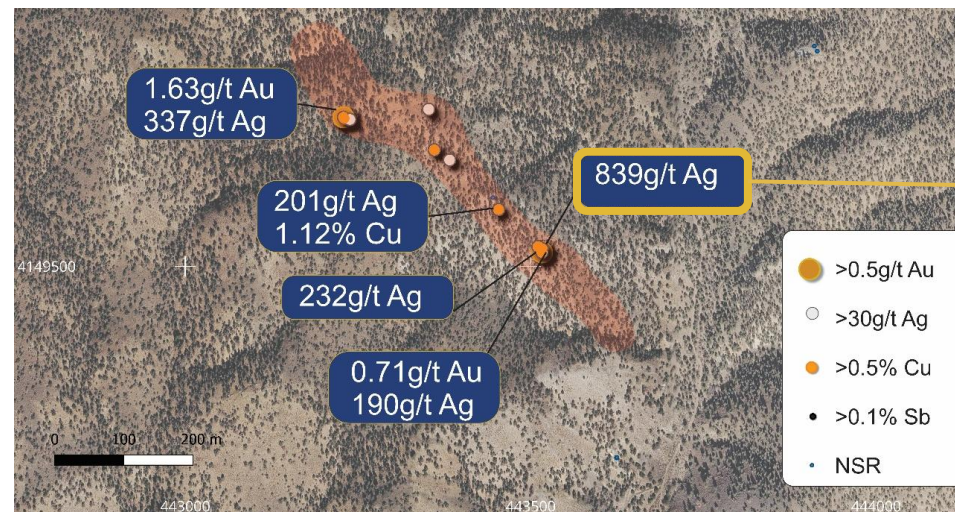
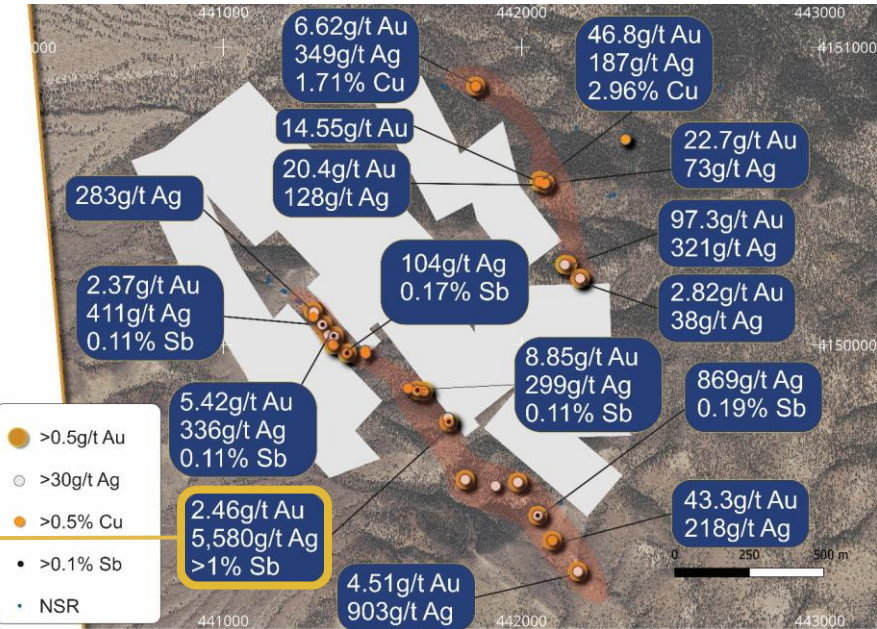
²Refer to ASX Ann. "Multiple High-Grade Targets identified at Excelsior" 9/4/2026

Building out the pipeline of targets

- **High calibre Gold and critical minerals Prospects**
- Extensive historic workings supported by prospecting and sampling activities
- **Kentucky Trend:** Rock chip results of up to 5,580g/t Ag, >1% Sb, 2.46g/t Au 1.95% Cu, along a 1,500m strike trend with significant historical mining activity.
- **Stantz Trend:** Rock chip results of up to 839g/t Ag, 0.48g/t Au, 1.28% Cu, 11.1% Pb along a 1,300m strike trend that contains multiple shafts and adits.
- **Buster East:** Rock chips of up to 28.7g/t Au, 159g/t Ag located 1.4km along strike to the east of the Buster Trend, which has been the focus of recent drilling.



MREX00310 – 5,580g/t Ag, 2.46g/t Au, >1% Sb 1.95% Cu



MREX00233 – 839g/t Ag, 1.28% Cu, 19.6% Pb

¹Refer to ASX Ann. "High-Grade Results Expand Blue Dick Trend, Nevada" 07/11/2025



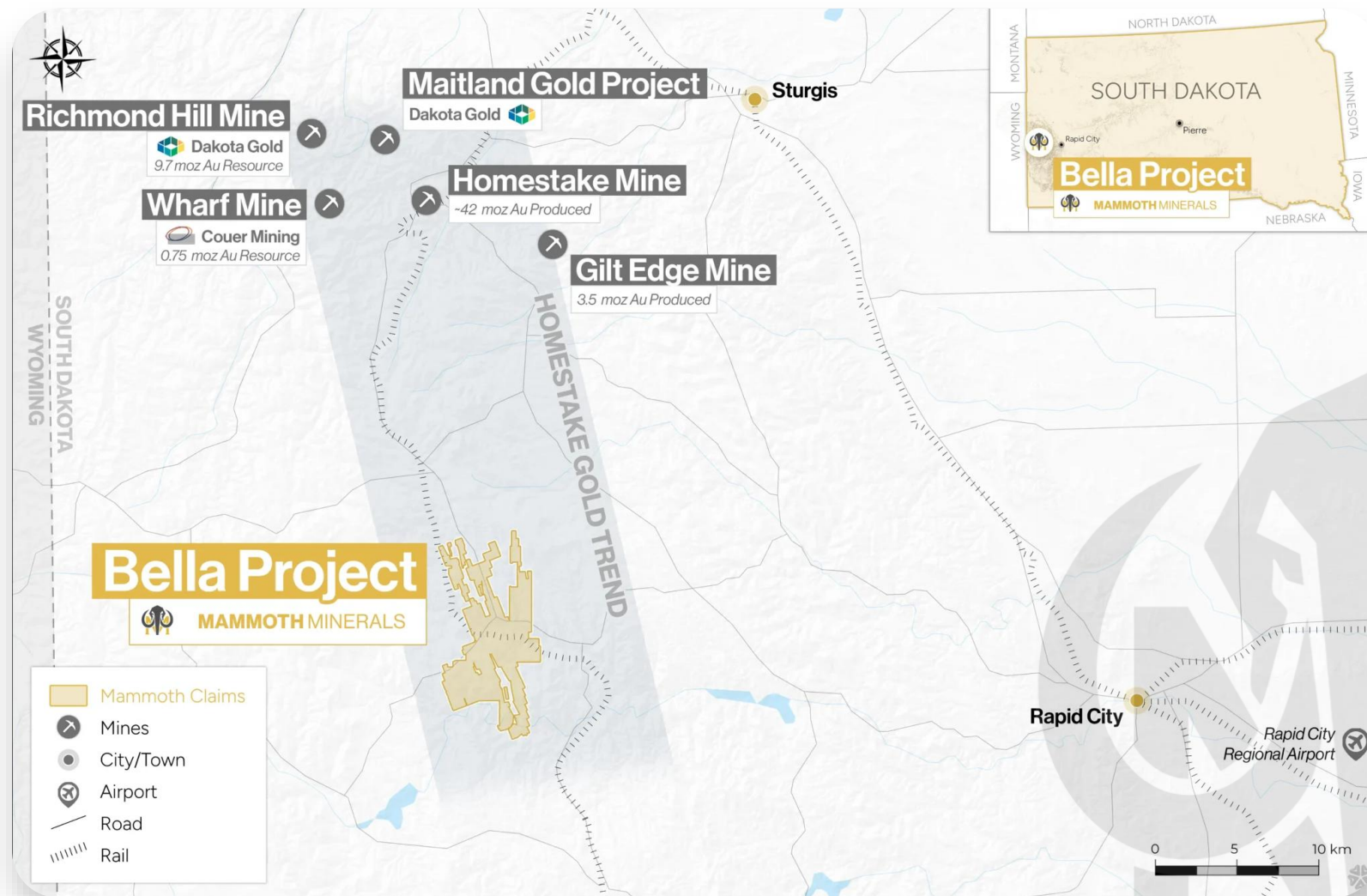
South Dakota – 145 Years of Mining

World-Class Endowment and Production

- **Homestake Mine**, located 20km from the Bella Project, operated continuously for 125 years and produced ~42Moz Au (152Mt at 8.4g/t Au⁶)
- **District is host to ~85Moz Au endowment**
- Mineralisation hosted within Banded Iron Formation (BIF)
 - Well known deposit model - ledge scale synclinal fold hinges, **gold associated 5-20% pyrrhotite**, potential to **directly target mineralisation using EM driving rapid delineations of mineralisation**

Scale, Grade & Unquantified Potential

- **110km²** of banded iron formation host, which was previously part of the Homestake Mine sequence, offset by post mineralisation tectonics
- Recent mapping in 2022 and 2023 highlighted surficial high- grade mineralisation potential - **results of up to 138g/t Au which have never been followed up**
- **Seven discrete priority-1 target areas** supported by surface sampling, magnetics, EM, channel sampling and/or drilling

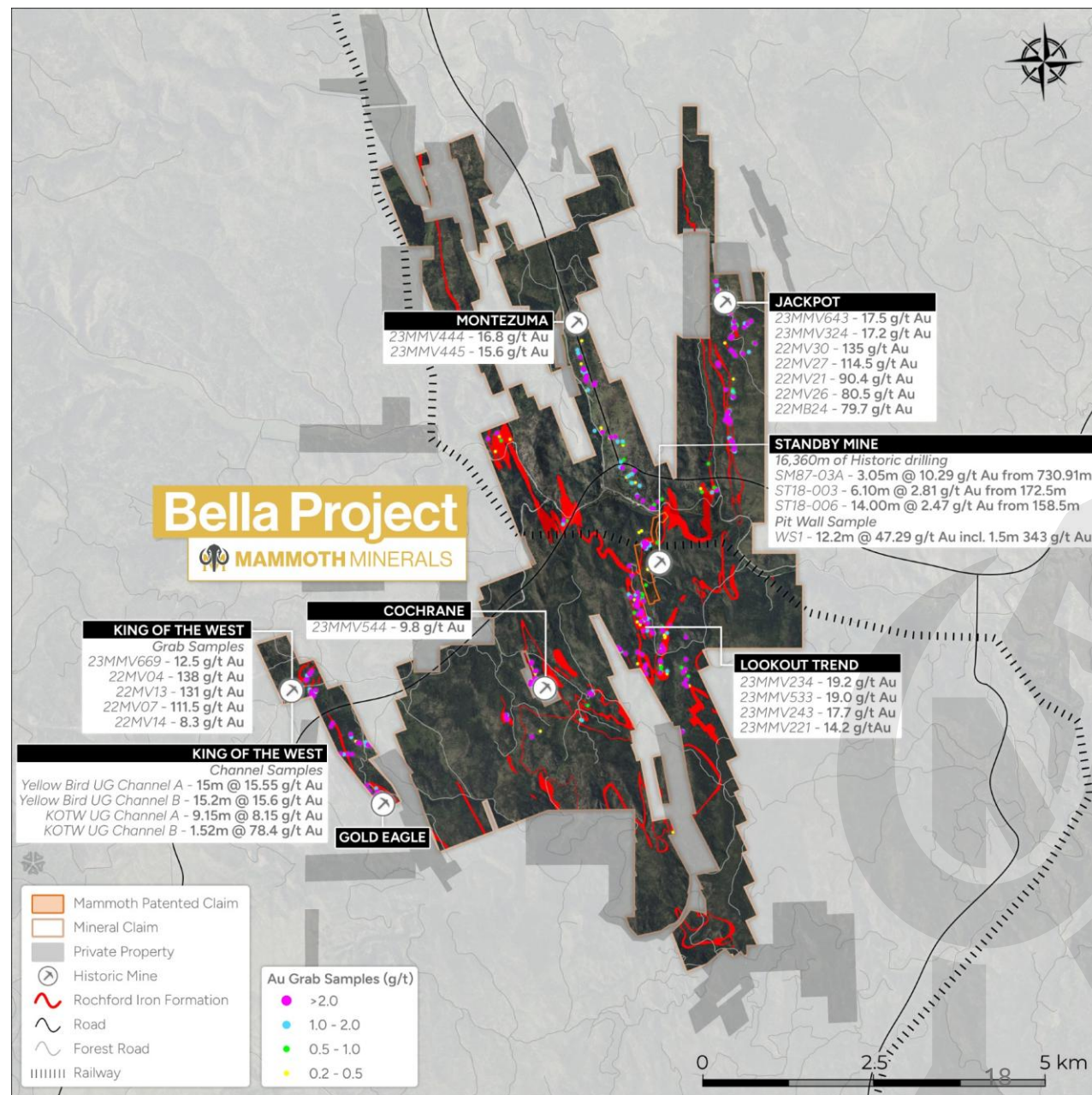




Bella – Overview

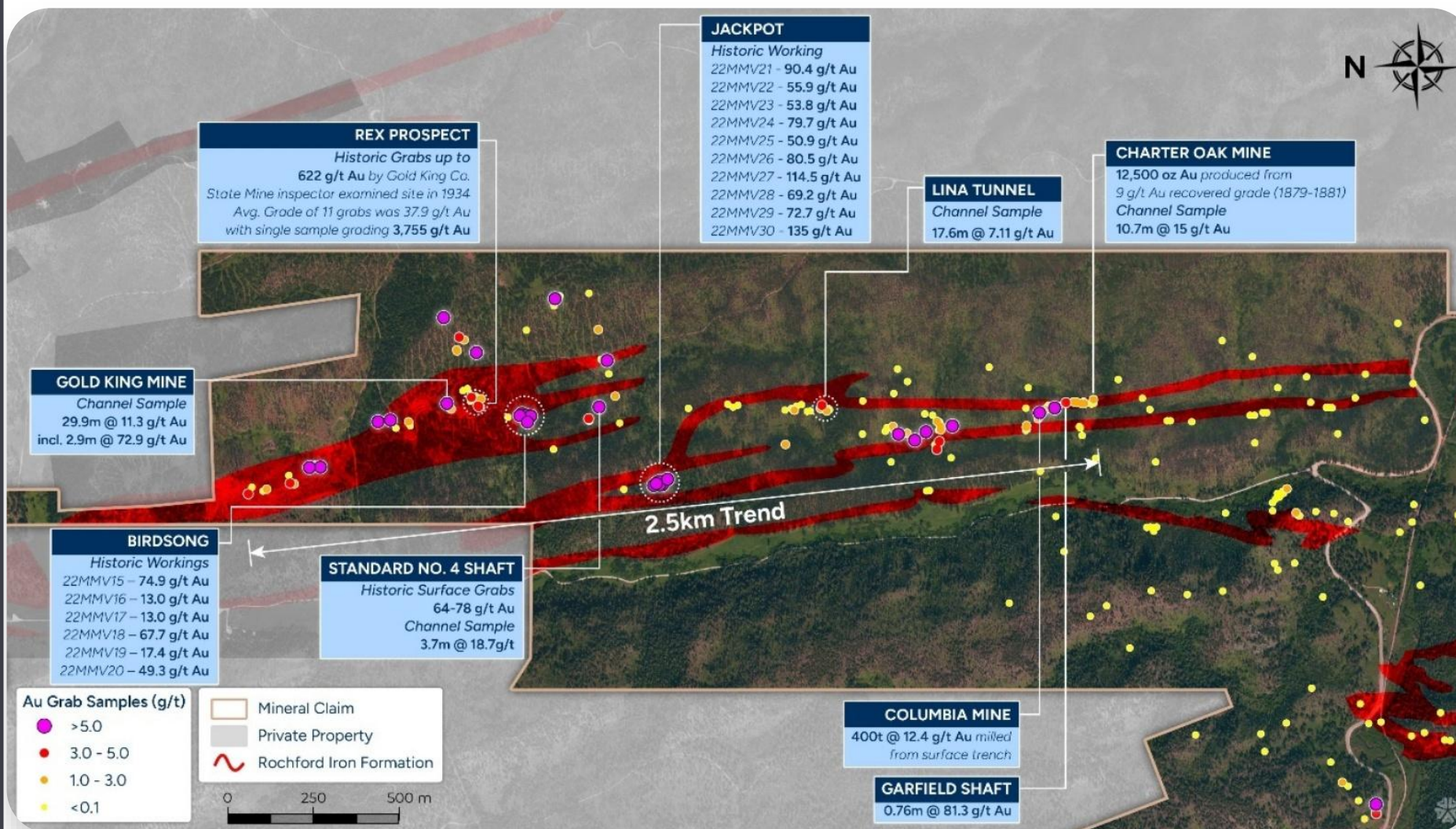
HIGH-GRADE, SCALEABLE OPPORTUNITY

- F2 Folds flattening represented key mineralisation targets at Homestake - multiple analogous targets are identified at Bella
- Standby Mine – Significant Historic Producing Gold Mine extracted from Open Pit and UG workings
 - Located on Patent Ground allows expedited access and Permitting
 - High Grade trends confirmed to over 450m below surface
 - 3.1m at 10.29g/t from 790.9m – SM87-03A
- Multiple Historic Shafts and Workings on Mapped Banded Iron formation
- Rock chip sampling completed in 2022-23 outlined seven discrete target areas, with multiple significant results including:
 - 135 g/t Au - Standard Trend
 - 138 g/t Au - King of The West Trend
 - 135 g/t Au - Jackpot Trend
- Numerous additional prospects identified for follow up





Jackpot trend - 20km from Homestake Mine



- Jackpot trends - 2.5km of strike defined by a combination of historic workings, mapping and magnetics/EM
- Nine ledge scale fold structures interpreted - each ledge at the Homestake Mine hosted between 1Moz and 19Moz Au
- Channel Sampling:
 - 29.9m at 11.3g/t Au - Gold King Mine
 - 10.7m at 15g/t Au - Charter Oak Mine
 - 17.6m at 7.11g/t Au - Lina Tunnel
 - 3.7m at 18.7g/t Au - Standard No 4 Shaft
- Rock chip sampling by the Mines Inspector in 1934 reported grades of up to 3,755g/t Au at the Rex Prospect



Copper Portfolio optimisation strategy active to support US Gold Strategy



Newfoundland
CANADA



Peru
SOUTH AMERICA



Newfoundland, Canada - Copper

Skyline Copper

ASX : M79
Mammoth Minerals Limited

❖ HIGH-GRADE OPPORTUNITY

An advanced copper-zinc-silver project with drill-defined mineralisation, located in a region experiencing renewed exploration activity from companies like Firefly Metals and AuMEGA

🏗️ SKILLED WORKFORCE & YEAR-ROUND OPERATIONS

Local skilled labour and technical support services readily available, enabling continuous, year-round operations

Skyline Copper
Mammoth Minerals

⚒️ MINING-FRIENDLY JURISDICTION

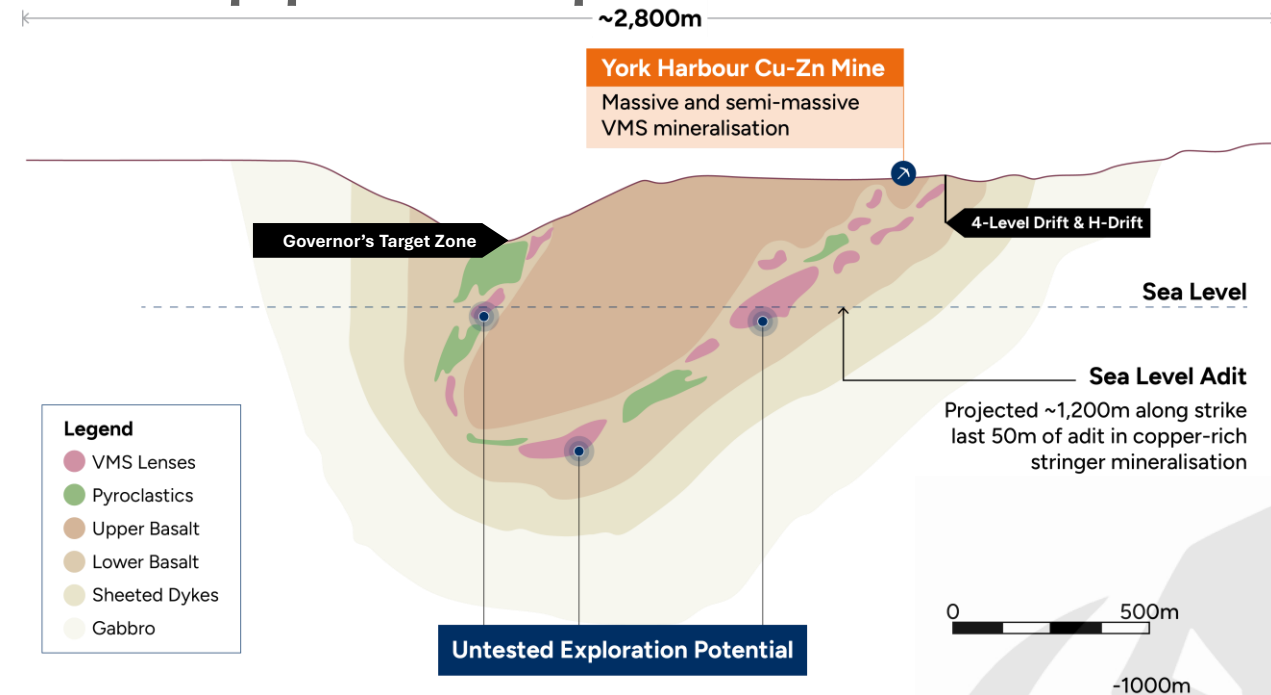
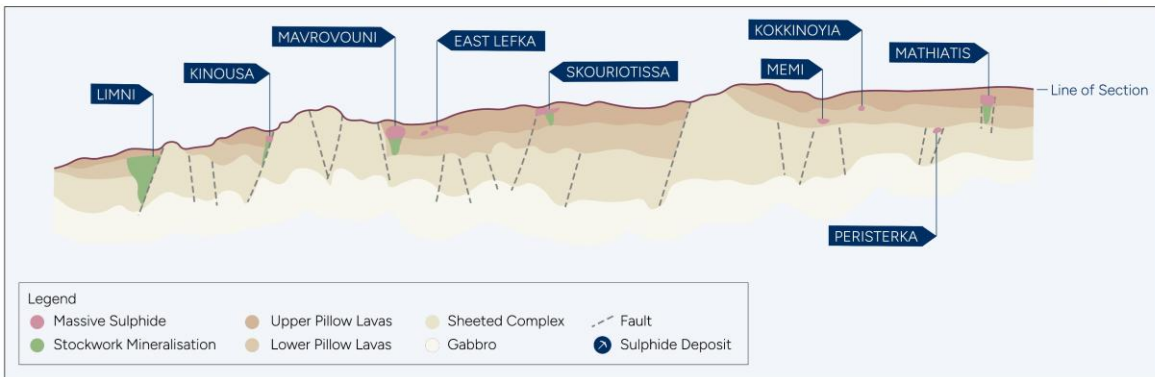
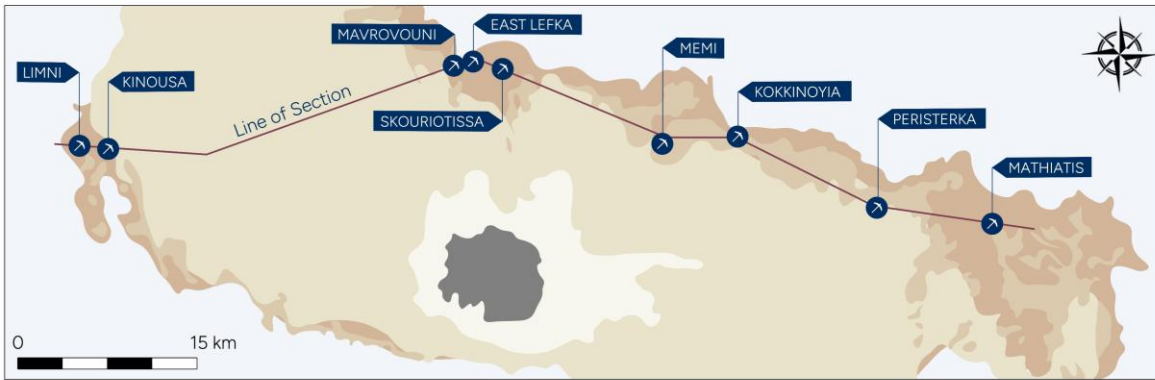
Newfoundland offers a globally recognised mining-friendly environment with strong, supportive legislation

🏰 EXCEPTIONAL ACCESS & INFRASTRUCTURE

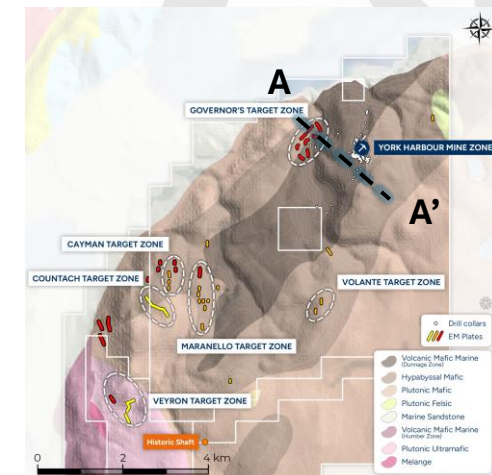
Direct flights to Deer Lake via Toronto; sealed road across the northern edge of the tenure; ready access to hydro power and proximity to the TransCanada highway



Cyprus Style - The Original Copper Deposit



Interpreted geological cross section of the York Harbour Mine Area



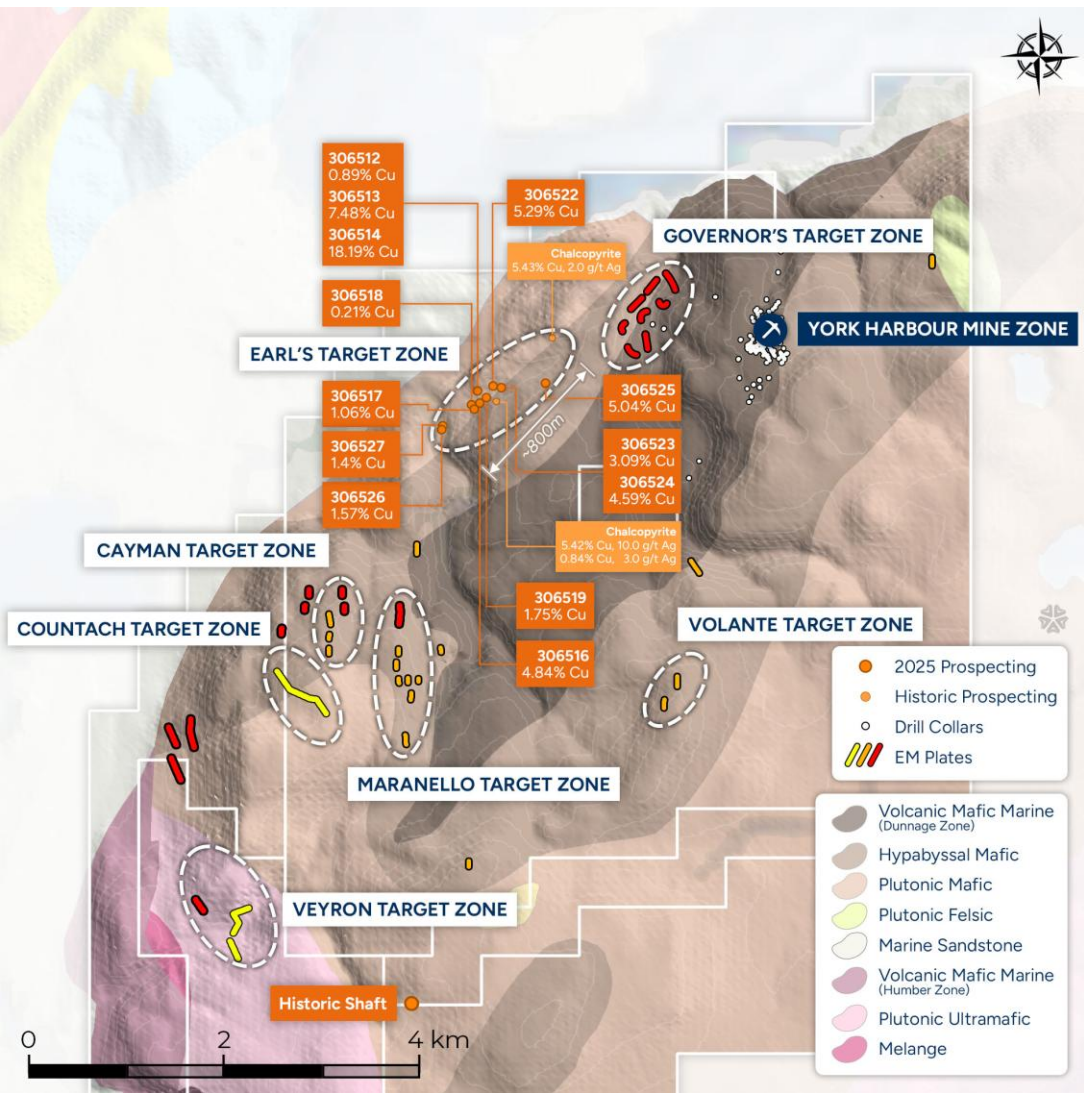
Setting the Geological Scene

- Geological setting and stratigraphy of Skyline is **identical** to that of the Troodos Ophiolite sequence in Cyprus
- The largest of the Cyprus style deposits is Mavrovouni, which produced 17Mt at 4.5% Cu*
- Mineralisation is hosted in massive sulfide lenses hosted within pillow lava sequences
- Modern production from the Cyprus region totals 72Mt of massive sulfide ore - historically mined since 5,000BC

*1/4/25: Contracts awarded for key upcoming geophysical surveys at Skyline



Belt Scale VMS target Potential



Untapped Exploration Opportunity

The package offers excellent potential for identifying VMS-style systems identical to the Troodos Ophiolite sequence in Cyprus, over 8km of strike across potential host sequence

Magnitude of High-Grade Targets

Cyprus Type Deposit potential to host 17Mt at 4.5% copper, does not have EM response at surface - recent prospecting has identified an 800m long trend of high-grade copper-only massive sulphide up to 18% Cu – Earls Target

Modern Exploration Techniques

Mammoth is aiming to unlock Skyline's district-scale potential through a systematic, modern exploration program utilising progressive geophysical methods – 7 Target Zones currently under investigation

Governor's 3D IP Survey and Detailed Northern Magnetics

- 700m long target identified in IP with magnetics correlating with surface Geochemistry

YORK HARBOUR MINE SIGNIFICANT DRILL RESULTS ^{1,2,3}

- 29.0m @ 5.3% Cu from 147.0m – YH21-024
- 20.1m @ 2.5% Cu from 109.4m – YH21-020
- 24.3m @ 2.8% Cu from 93.0m – YH21-018
- 23.0m @ 3.6% Cu from 152.0m – YH24-126
- 28.5m @ 1.4% Cu from 185.7m – YH24-123
- 13.6m @ 3.0% Cu from 115.3m – YH22-061

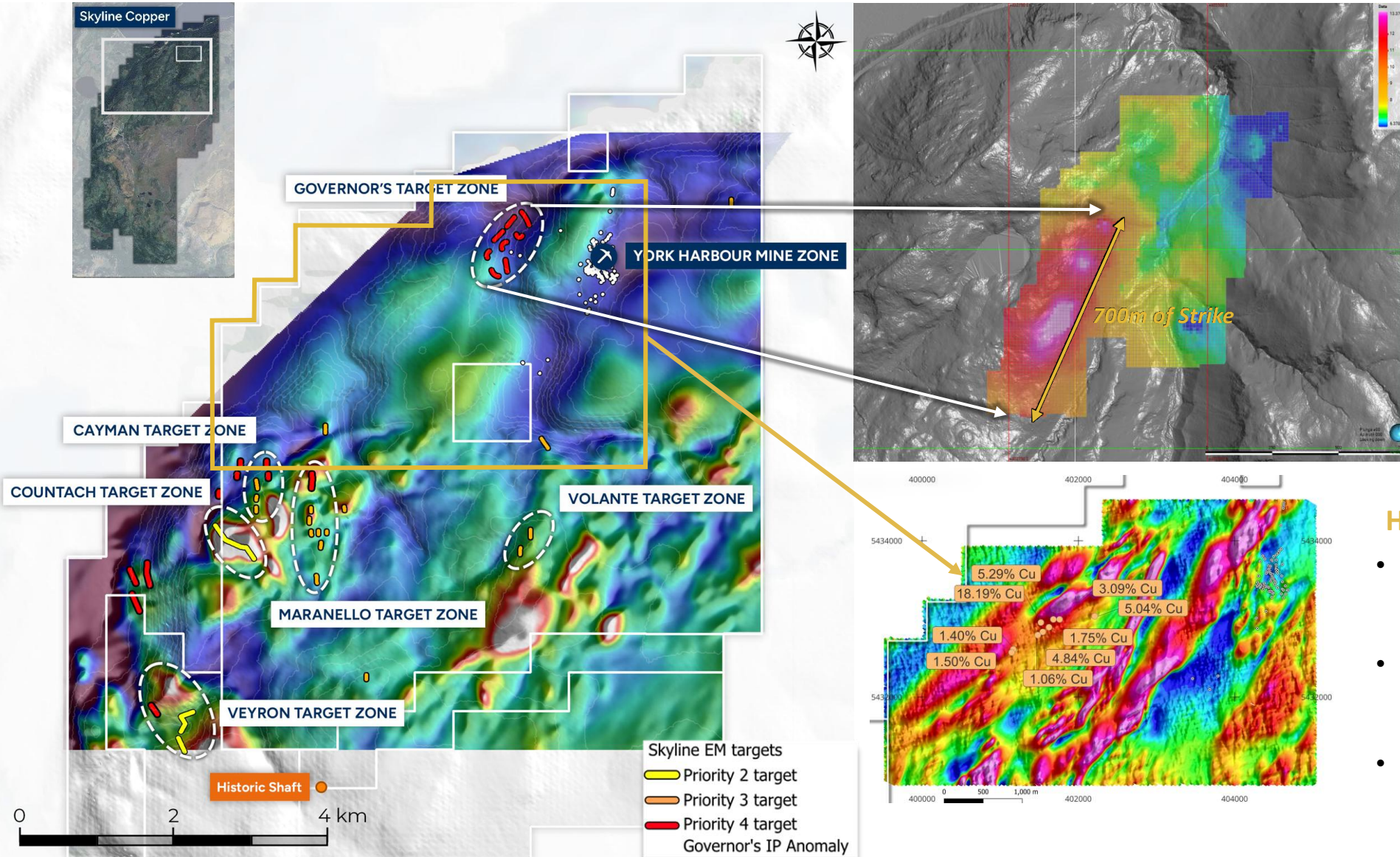
¹ASX – 6/6/2024 – Acquisition of York Harbour Copper Project

²ASX – 4/11/2024 – Significant Grades Confirmed at Skyline

³ASX – 16/12/2024 – Drilling Extends High Grade Copper at Skyline



Belt Scale VMS target Potential



3D – IP Geophysics directly targeting Governors Target

- Ground-based geophysics has defined a target that aligns with stratigraphic sequence
- Coincidental with sulphide samples at surface
- Advanced drill ready target

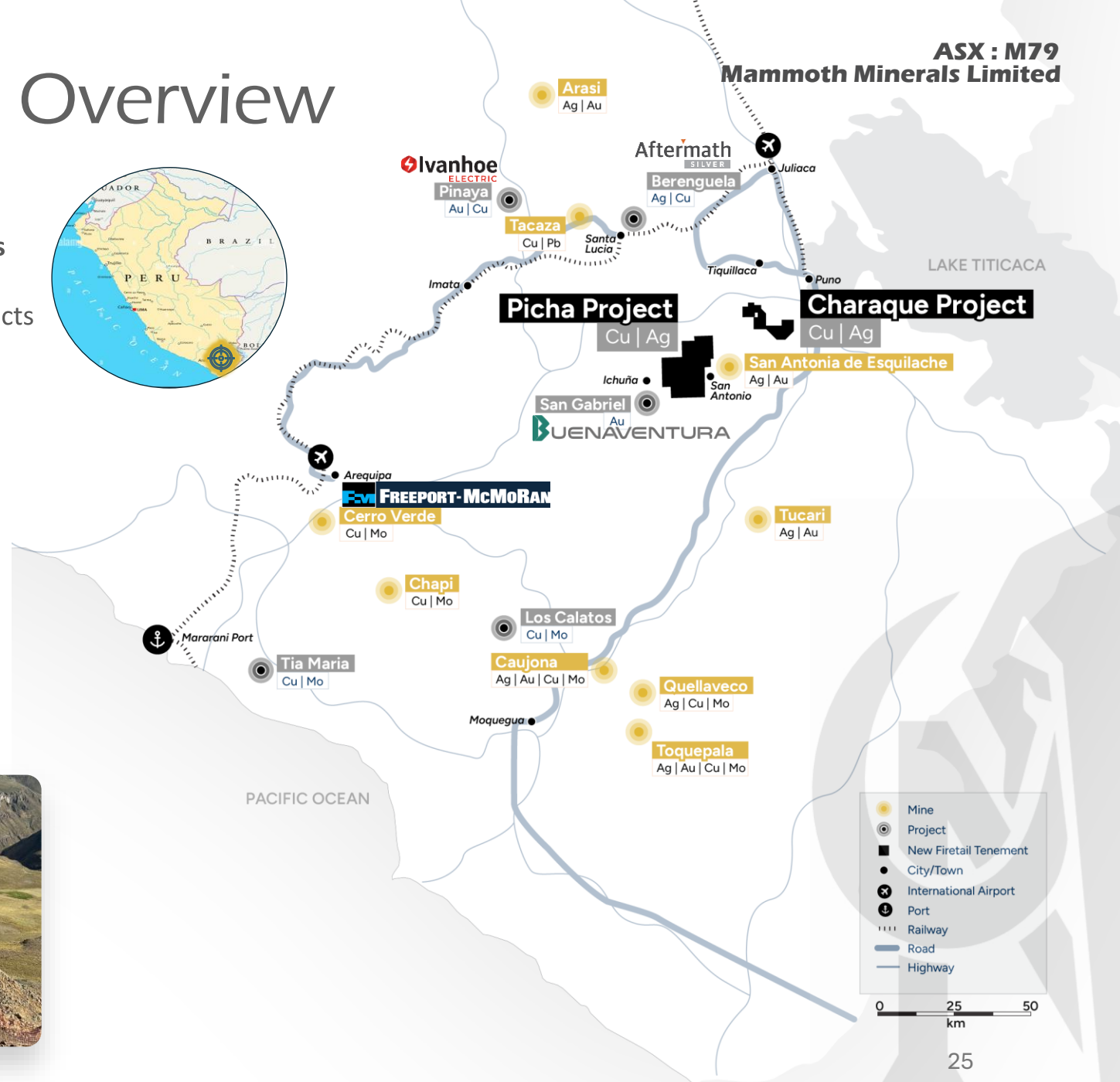
High-resolution Magnetics

- Low clearance heli-magnetics surveys provides detailed lithology and structural data
- Provides direct signature correlation to known mineralisation at York Mine
- Provides multiple targets for ground mapping and sampling



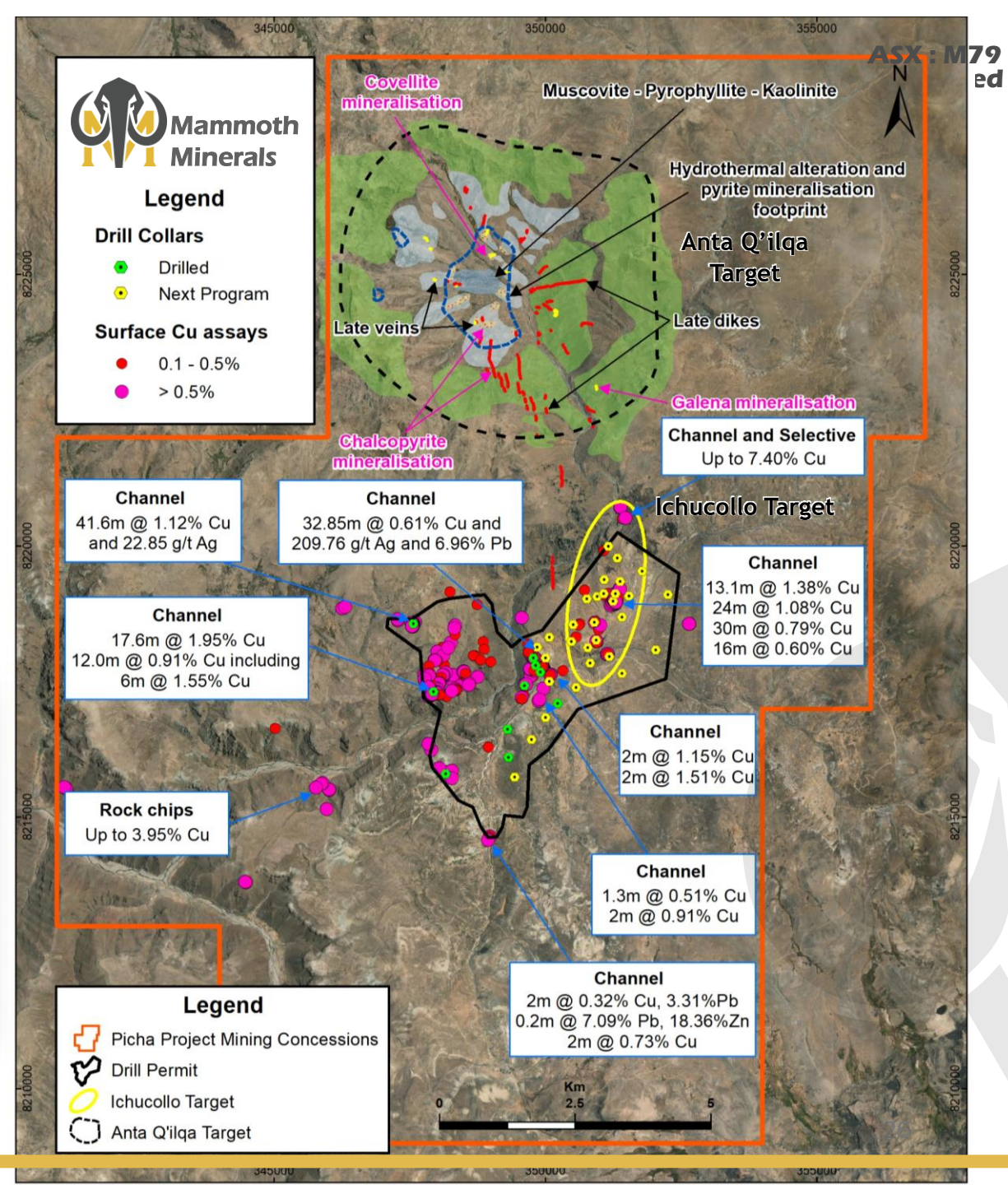
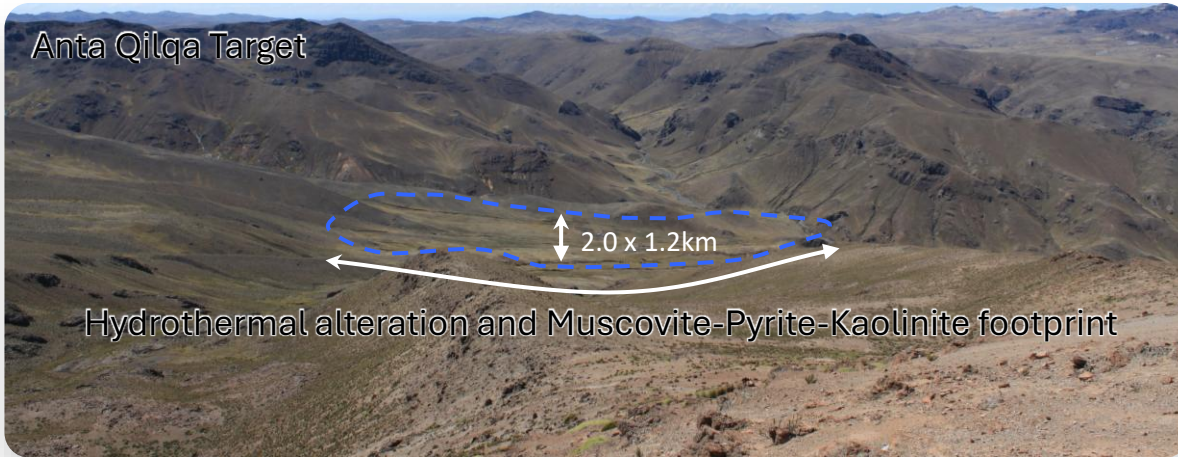
Peru Copper Projects Overview

- Picha Project – Advanced Porphyry Copper Targets
- Charaque Project – Intrusive and Carbonate Replacement Targets
- Surrounded by large gold, copper and base metal mines and projects
- Experienced and well-established in-country team
- Mammoth has excellent government and community relations
- Established camp and project and access infrastructure
- Supportive and experienced mining and contractor workforce
- Peru is the 2nd largest global producer of copper and silver:
 - Mining accounts for 12% of GDP and 60% of exports



Picha Copper Project

- Targeting Intrusion Related Copper Deposits in the Andean Arc
- **Deep Geophysical survey backed targets with mapping to support**
 - Property wide, detailed UAV Magnetics highlight alteration/structure
 - Targeted magnetotelluric survey to defining deep architecture ~5km +
 - Geochronology and Geochemical vector mapping ongoing
- Hydrothermal alteration with disseminated pyrite measuring 1.2 x 2.0km²
- Radial Fault and dyke structures centering over the highly altered zone
- Assays confirmed presence of copper-rich fluids at surface:
 - Mineralised channels up to 30m wide and Rock samples up to 7.4% Cu



⁵ 28 Jan 2025 New Target Identified as Exploration Accelerates at Picha Project, Peru

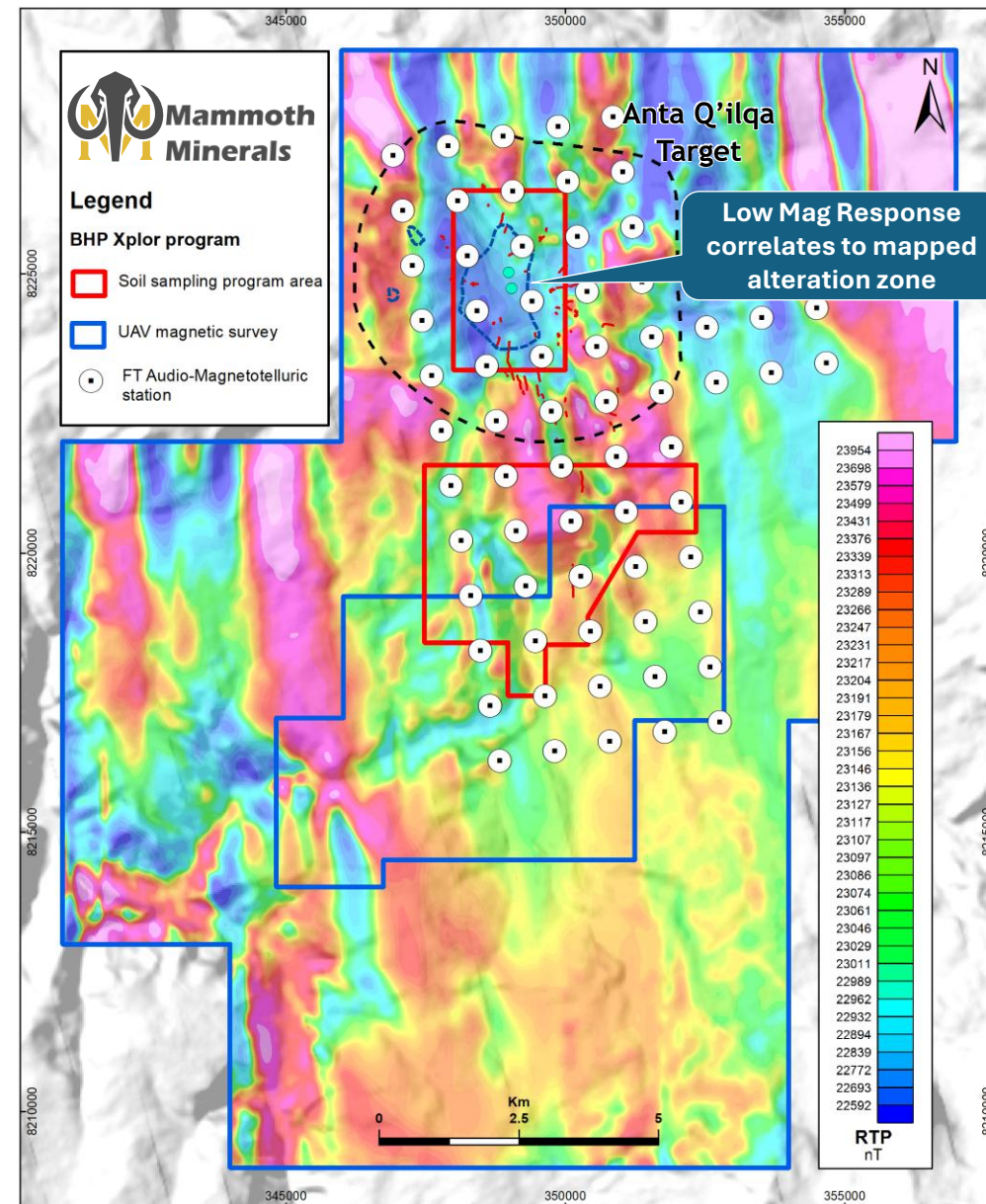
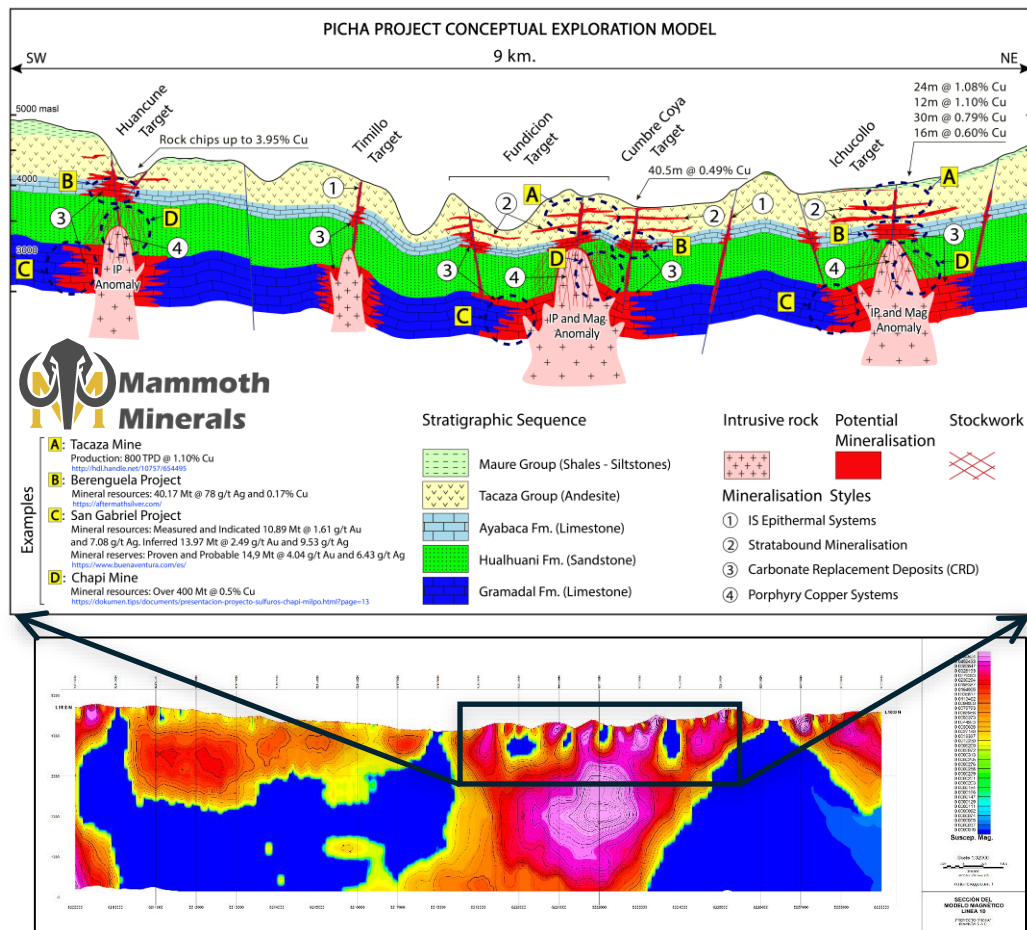
⁶ 5 July 2023: Firetail signs binding terms sheet for acquisition of Peru Copper projects

⁷ 9 April 2025: Exploration to refine porphyry potential at Picha Copper Project, Peru



Picha Copper Geophysics

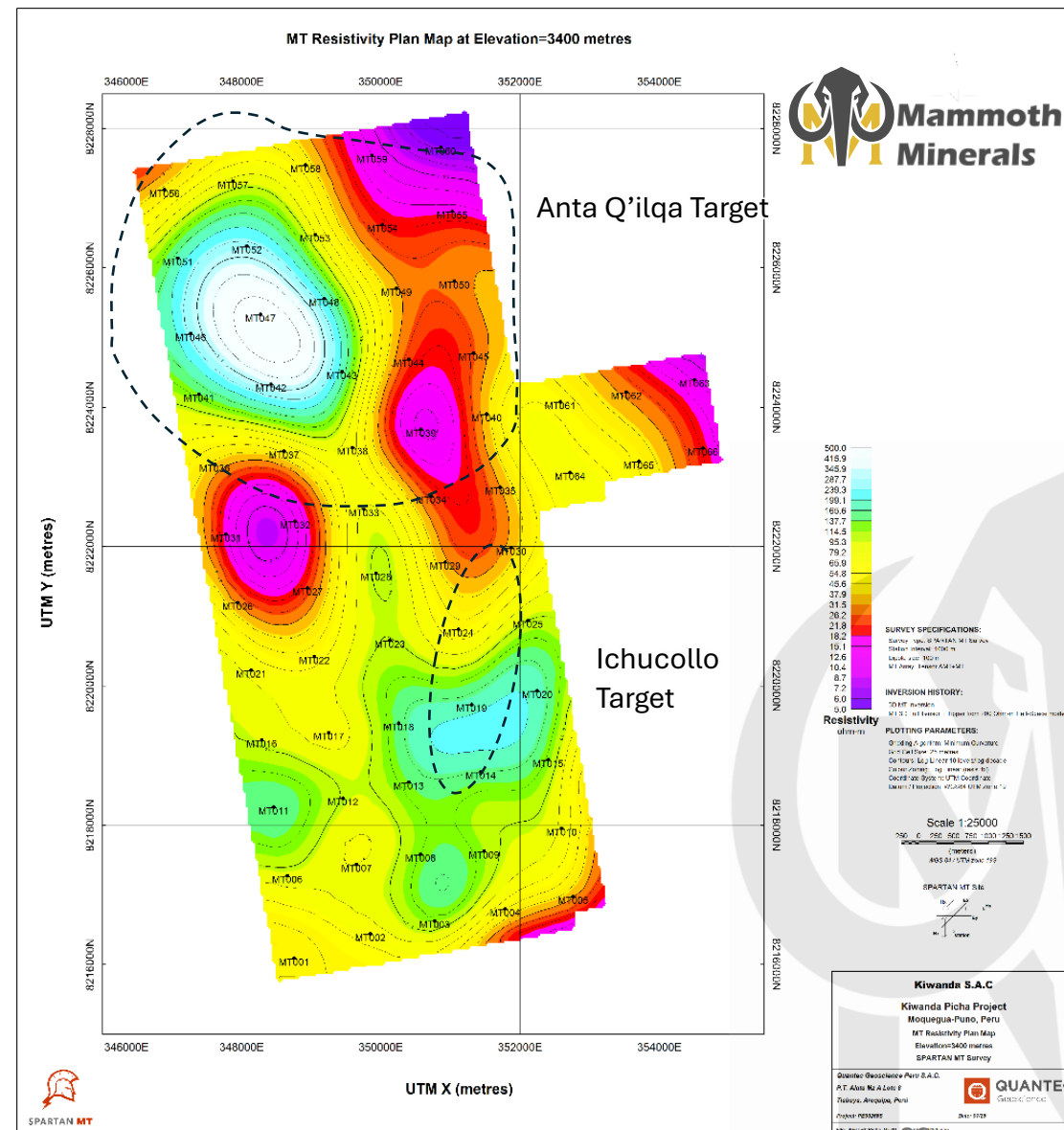
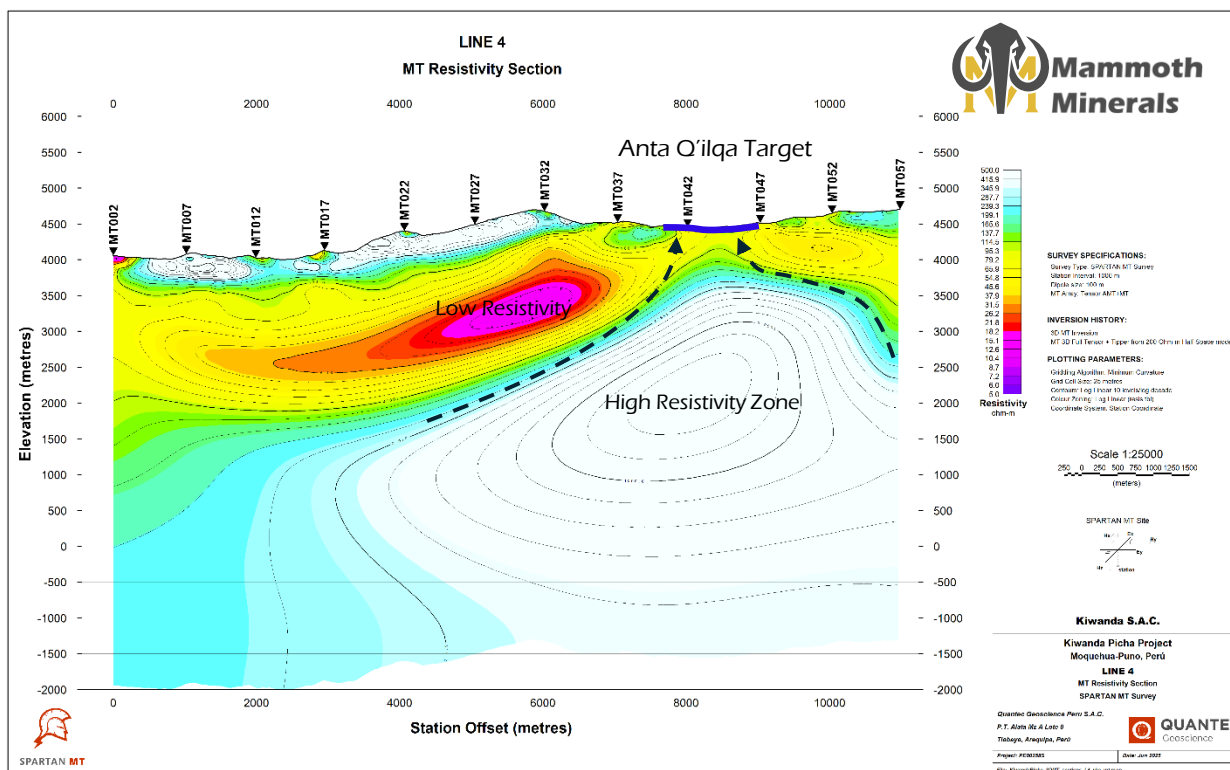
- Cross section of Magnetics supports working conceptual model of the Picha Project area⁸
- Magnetic low is a potential indicator magnetite destruction from porphyry intrusion
- Model supported by mapped mineralisation, alteration, local and regional structures





Picha Copper Geophysics

- Results show intrusive-style architecture from the mapped Anta Q'ilqa and Ichucollo alteration zones at surface to a depth of >5.0km below the Anta Q'ilqa Target.
- MT resistivity high zones coincident with magnetic low features observed across the Anta Q'ilqa and Ichucollo Targets in a recent property-wide UAV Magnetics survey support the working intrusive model for the Picha Project.





Mammoth Minerals

Key Reasons to Invest

BUSTER TREND/IMPERIAL, NEVADA - Au

Drill programs completed extending of the Buster Mine Gold Trend to underpin maiden mineral resources. Drill targeting from historic drilling and UG Mapping at Imperial and adjacent targets

BLUE DICK, KENTUCKY, NEVADA Au/Ag-Sb-Pb-Zn

Targeted mapping and sampling the multiple trends of historic workings supported by high-grade, polymetallic critical mineral results, advancing to drill ready status for upcoming RC campaigns

BELLA, SOUTH DAKOTA - Au

Refinement and direct targeting of potential Banded Iron formations identical to those seen at the 42Moz Au Homestake Mine for drilling

Portfolio Optimisation

Commercialisation of Picha Copper and Skyline Copper-Silver-Zinc assets to within portfolio to support the USA gold and critical mineral strategy



ASX : M79
Mammoth Minerals Limited

Mammoth Minerals ASX : M79

Investors:

Glenn Poole

Managing Director & CEO
Mammoth Minerals Limited

+61 (08) 9322 2338

info@m79.com.au

www.mammothminerals.com.au

Media:

Nicholas Read

Read Corporate

+61 8 9388 1474

info@readcorporate.com.au