

## INVESTOR PRESENTATION

**Xpedra Resources Limited (ASX: XPD)** attaches a copy of its latest investor presentation.

**This announcement was authorised for release by the Managing Director**

For further information please contact:

**Scott Funston**

Managing Director

Xpedra Resources Limited

Phone: +61 413 867 600

Email: [sfunston@xpedraresources.com](mailto:sfunston@xpedraresources.com)

**Nicholas Read**

Read Corporate

Media Inquiries:

Phone: +61 419 929 046

Email: [nicholas@readcorporate.com.au](mailto:nicholas@readcorporate.com.au)

# XPEDRA

Resources Limited

ASX: XPD

## High-impact gold exploration, growth and discovery in NSW

- ✓ Springfield Gold Project – First Assays Received
- ✓ Neeld Gold Project – Historic high-grade goldfield with exploration upside
- ✓ Well-funded to advance exploration programs

Investor Presentation

RIU Sydney 5, 6 and 7 May 2026

## CAPITAL STRUCTURE

**Shares on Issue**  
**781.8m<sup>1</sup>**

**Performance Rights**  
**56.0m**  
 Held by  
 Management Team

**Options**  
**85.0m**  
 60m exercisable at \$0.065  
 15m exercisable at \$0.021  
 10m exercisable at \$0.03

**Share Price**  
**\$0.023**  
 52-week range:  
 \$0.016 - \$0.032

**Market Capitalisation**  
**\$17.2m<sup>1</sup>**  
 At \$0.023/share

**Cash**  
**~\$4.3m**  
 Includes balance at 31 March  
 2026 and \$3.2M placement  
 announced 23 April 2026

## SHAREHOLDERS<sup>1</sup>

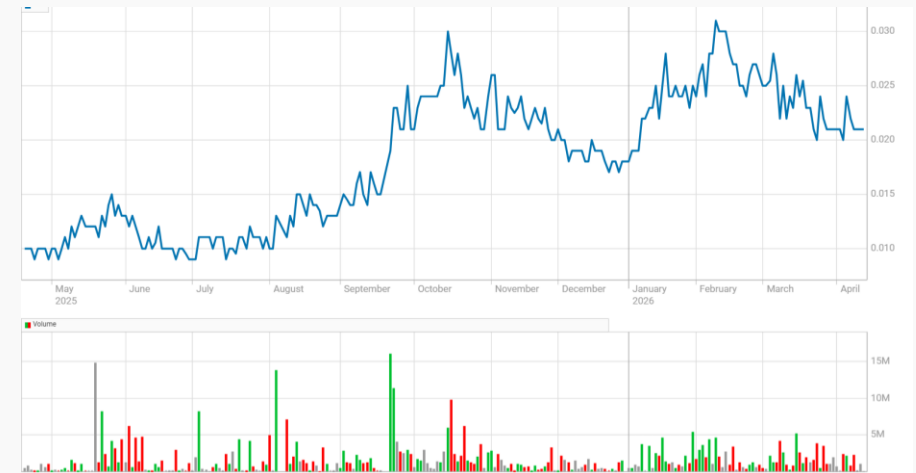
**Bullseye  
 Geoservices  
 Pty Ltd**  
**6.4%**

**Celtic Finance  
 Corp Pty Ltd**  
**5.2%**

**Directors &  
 Management**  
**8.6%**

**Top 20**  
**32.5%**

ASX:XPD – Share Price during the past 12 months



<sup>1</sup> Post placement and acquisition of Neeld Gold Project share issues announced on 21 April 2026 and 23 April 2026

# Board of Directors & Management Team



## Mike Haynes

EXECUTIVE CHAIRMAN

- Over **30 years' experience in the resources sector.**
- Bachelor of Science with Honours in Geology and Geophysics.
- Recently led the **acquisition, exploration and permitting** of the Antler Copper Project in Arizona as Managing Director/CEO, prior to Kinterra's takeover of New World Resources for A\$250million in August 2025.
- Held **multiple executive and non-executive directorships with ASX-listed resources companies** since 2006.
- Currently Non-Executive Chairman of Koba Resources Limited.



## Scott Funston

MANAGING DIRECTOR

- More **than 22 years' experience in the resources industry** and accounting profession.
- Qualified Chartered Accountant.
- Spent 12 years as Avanco Resources' CFO – throughout **exploration, financing and development** of copper projects in Brazil; and intimately involved in Avanco's sale to Oz Minerals for \$418million in 2018.
- Resource Industry **experience through all facets of the mining cycle – acquisition, exploration, discovery, feasibility, financing, construction and operations.**
- Currently a Non-Executive Director of Koba Resources Limited.



## Gary Billingsley

NON-EXECUTIVE DIRECTOR

- Over **47 years' experience in the resource sector.**
- Bachelor of Science Advanced Degree in Geology, designations as Chartered Accountant, Professional Engineer and Professional Geoscientist.
- Career highlights include **leading the team that brought Saskatchewan's largest gold mine into production.**
- **Discovered several diamond-bearing kimberlites** and played a key role in taking a junior potash company public (subsequently bought by BHP).
- Worked for the Saskatchewan Geological Survey mapping in the Athabasca Basin.



## Joe Graziano

JOINT COMPANY SECRETARY

- Over **30 years' experience providing a wide range of business, financial and taxation advice.**
- Focused on Corporate Advisory and strategic planning with corporations and private businesses.
- **Extensive experience in capital raisings, ASX compliance and regulatory requirements.**
- Director of Pathways Corporate Pty Ltd, a specialised Corporate Advisory business and sits on several Boards of ASX-listed companies.



## Ian Cunningham

JOINT COMPANY SECRETARY

- Over **17 years' experience in the resources sector.**
- Chartered Accountant and Chartered Secretary and holds Bachelor of Commerce and Bachelor of Law degrees.
- Past **executive and senior management roles** with New World Resources, PolarX Limited and Adamaus Resources.
- Intimately involved in merger of Adamaus with Endeavour Mining Corp and Kinterra's takeover of New World Resources.

# High-Grade Gold and Antimony Projects in NSW

High-quality portfolio spanning the Lachlan Fold Belt and New England Orogen

## Springfield Gold Deposit – acquired late 2025

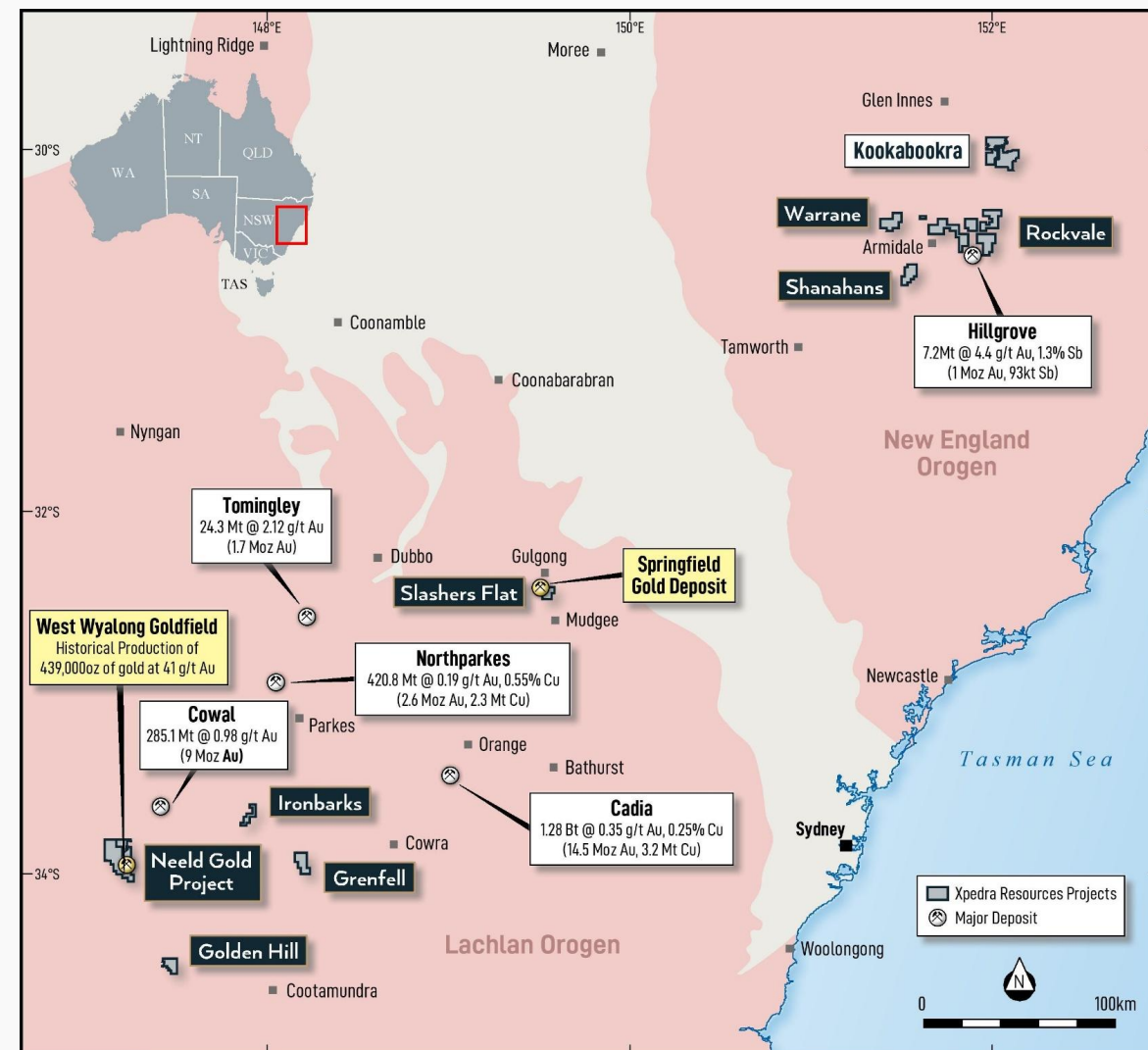
- Advanced gold asset in the Lachlan Fold Belt
- Significant intersections in limited previous drilling include:
  - 27.0m @ 3.64g/t Au from 0m (surface), including:**
    - 6.0m @ 8.29g/t Au from 1.0m; and**
    - 3.0m @ 9.23g/t Au from 11.0m**
  - 86.0m @ 1.04g/t Au from 104m, including:**
    - 12.0m @ 2.90g/t Au from 160.0m; and**
    - 26.0m @ 1.83g/t Au from 146.0m**
- Maiden drill program commenced March 2026, initial assays received

## Neeld High-Grade Gold Project – acquired April 2026

- New complementary acquisition from Saturn Metals (ASX: STN)
- Historical production of **439,000oz of Au @ 41g/t Au**
- Exceptional exploration upside

## Rockvale Gold-Antimony Project – New England district

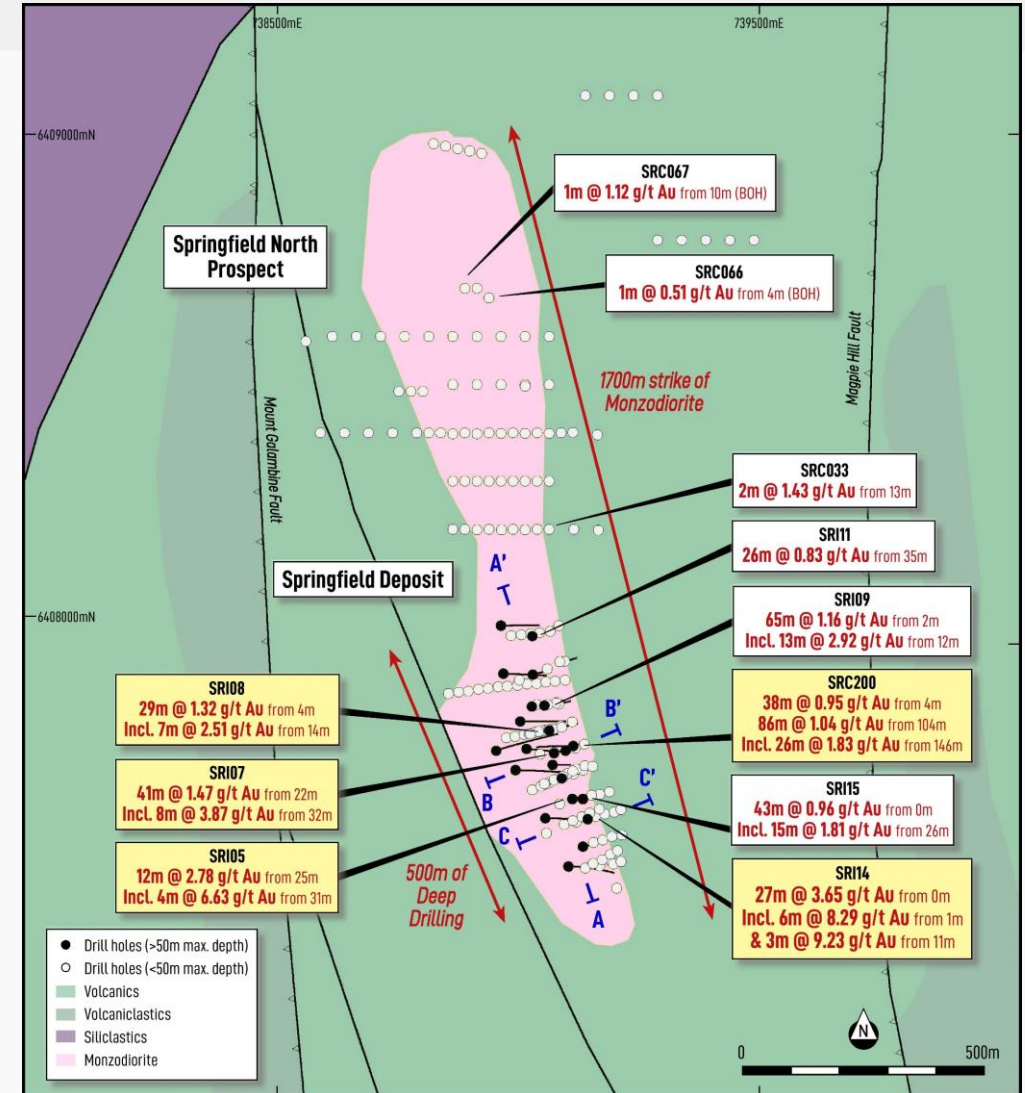
- Granted Exploration Licence surrounding Larvotto Resources' Hillgrove Gold-Antimony Mine (**7.2Mt @ 4.4 g/t Au, 1.3% Sb – 1Moz Au and 93kt Sb**)



# Springfield Gold Deposit

## XPD drilling - first program since 1999

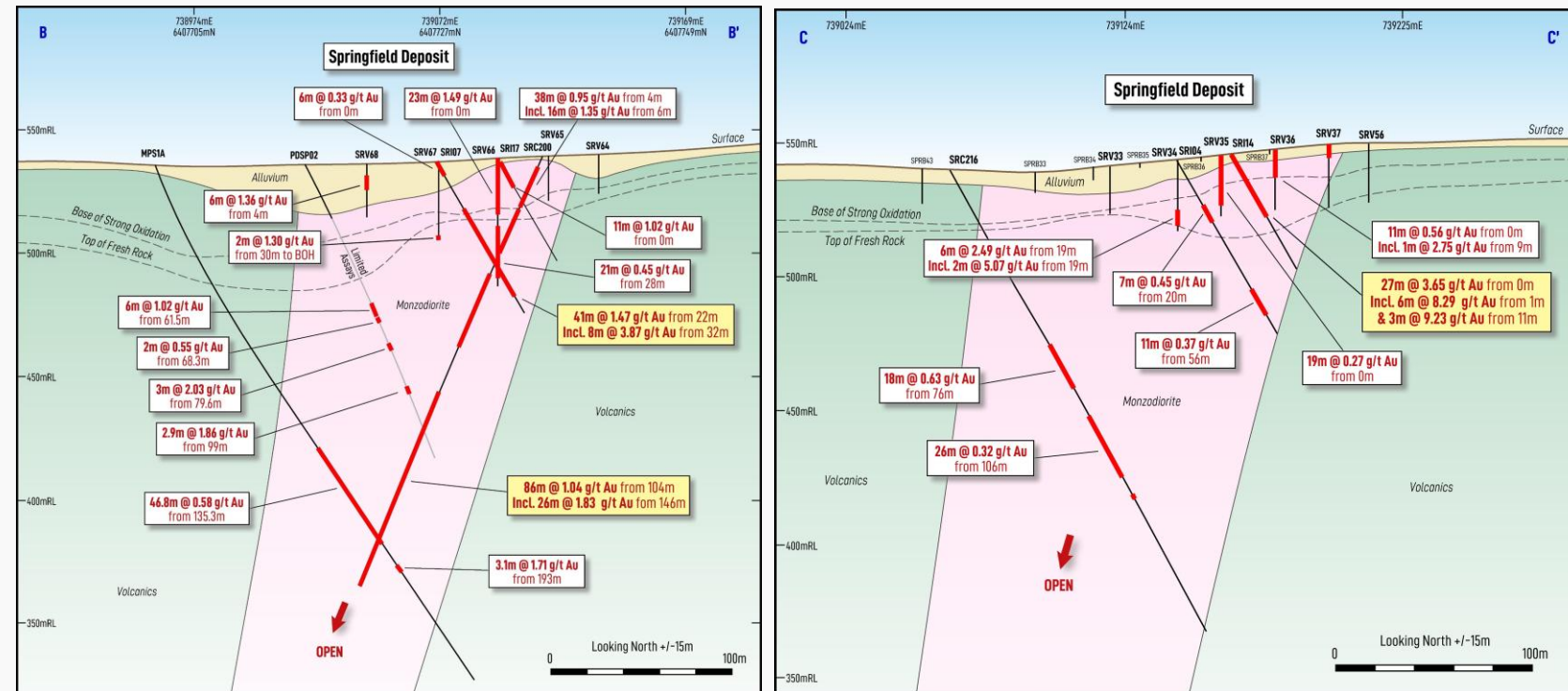
- Mineralised intrusion outcrops over 1,700m of strike
- A total of only 6,568 metres drilled previously (186 holes):
  - Predominantly shallow reconnaissance aircore drilling
  - Average hole depth = 35 metres
- Significant intersections from historical shallow drilling include:
  - 27.0m @ 3.64 g/t Au from 0m (surface), including:**
    - 6.0m @ 8.29 g/t Au from 1.0m; and**
    - 3.0m @ 9.23 g/t Au from 11.0m**
  - 65.0m @ 1.16 g/t Au from 2.0m, including:**
    - 13.0m @ 2.88 g/t Au from 12.0m**
  - 41.0m @ 1.47 g/t Au from 22.0m, including:**
    - 8.0m @ 3.87 g/t Au from 32.0m**
  - 12.0m @ 2.78 g/t Au from 25.0m, including:**
    - 4.0m @ 6.63 g/t Au from 31.0m**



# Springfield Gold Deposit

Very limited deeper historical drilling – with mineralisation remaining completely open at depth and along strike

- All deeper drilling within a 500m-long corridor at the southern end of the intrusion
- Negligible drilling below 100m depth
- Significant intersections in very limited deeper drilling include:
  - 86m @ 1.04 g/t Au from 104m, including**
  - 26.0m @ 1.83 g/t Au from 146.0m; and**
  - 46.8m @ 0.58 g/t Au from 135.3m, including**
  - 2.2m @ 2.33 g/t Au from 179.8m**
- Mineralisation remains open along strike in both directions and at depth**
- No drilling since 1999 prior to XPD's maiden drilling program in March / April 2026



Cross sections through the Springfield Gold Deposit

# Springfield Gold Deposit

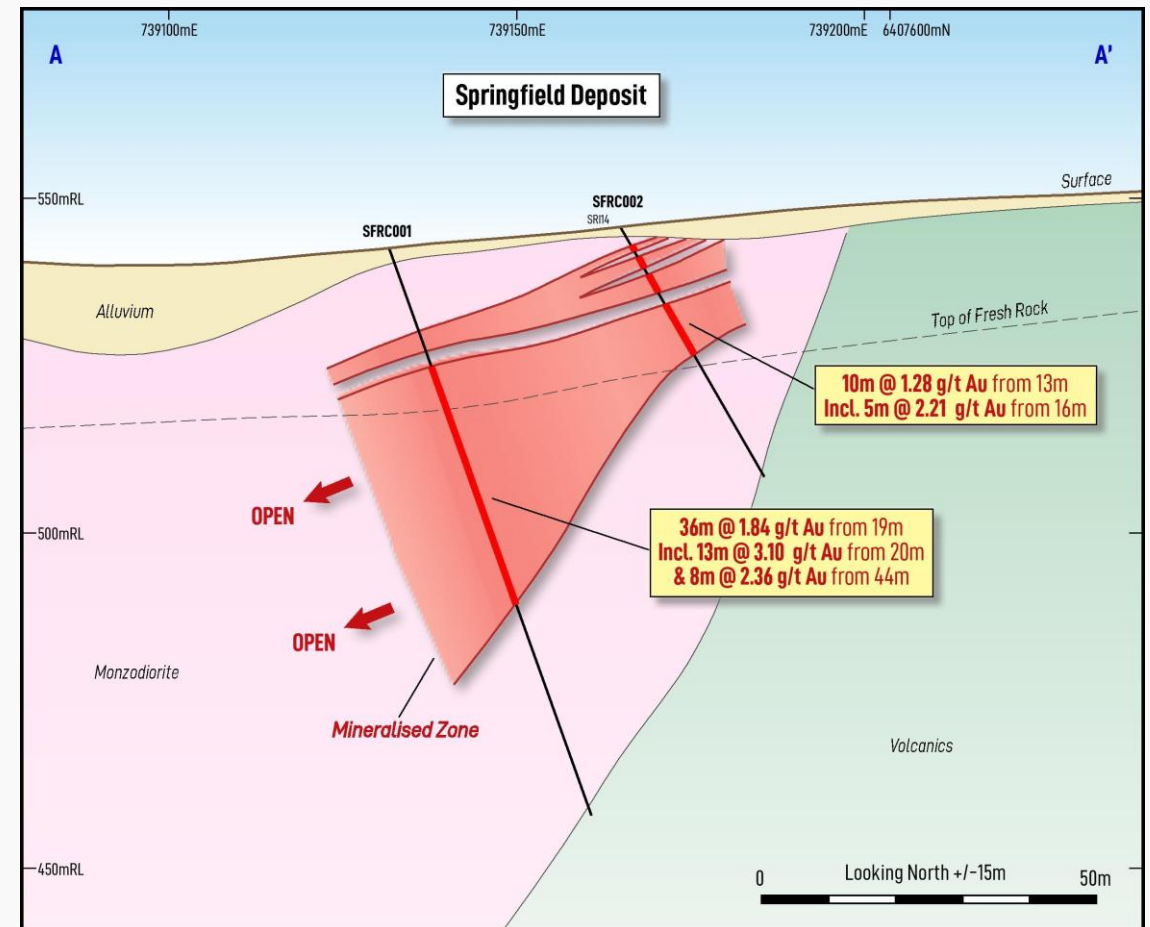
## Xpedra's maiden drilling program – Commenced March 2026

- 27 holes completed for 2,579 metres
- Significant assay results returned from the first two drill holes, including:

**36m @ 1.84g/t Au from 19 metres, including:  
13m @ 3.10g/t Au from 20 metres; and  
8m @ 2.36g/t Au from 44 metres (SFRC001).**

**10m @ 1.28g/t Au from 13 metres, including:  
5m @ 2.21g/t Au from 16 metres (SFRC002).**

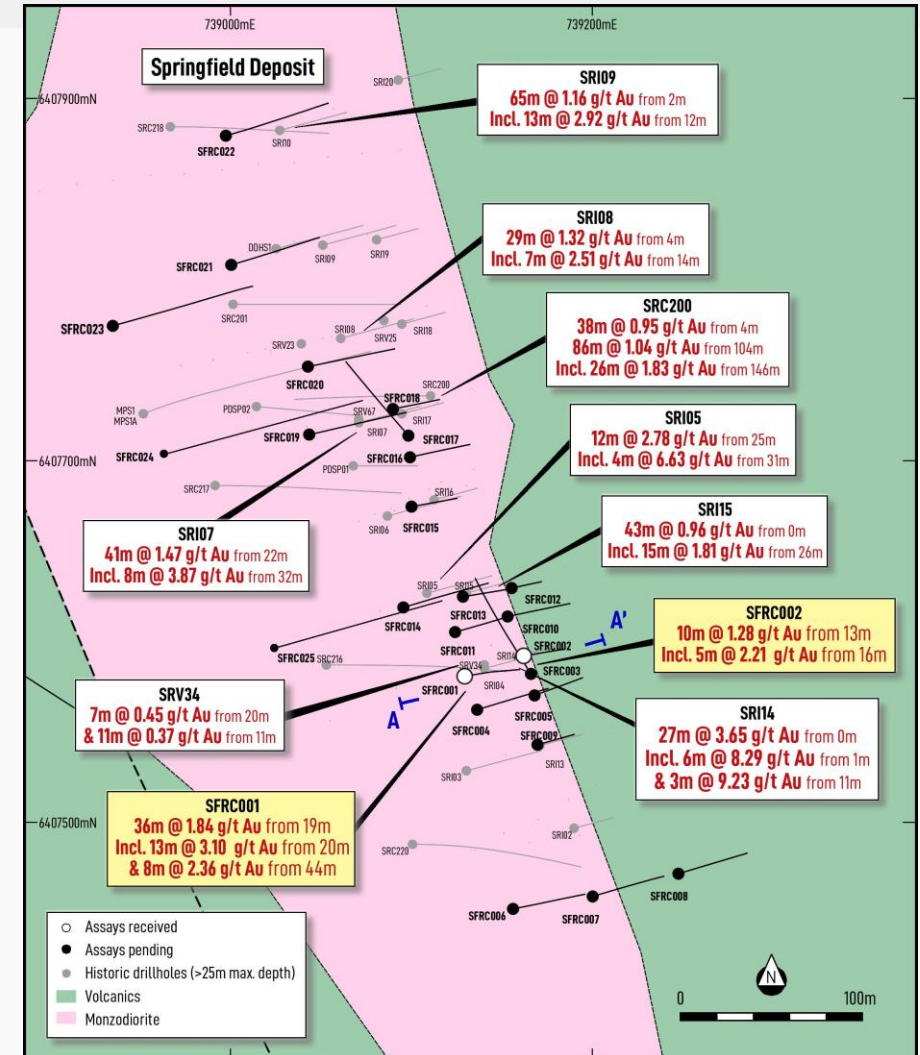
- Drilling has confirmed that the mineralisation remains open to the west highlighting the potential for further extensions. Mineralisation also remains open to the north, south and at depth.
- Assays pending for 25 drill holes
- Objective is to discover more mineralisation with:
  - Infill drilling;
  - Shallow extensional drilling immediately north and south;
  - Drilling to test for oblique structures hosting high-grade mineralisation; and
  - Deeper drilling.



# Springfield Gold Deposit

## Xpedra's maiden drilling program – Plan View Initial Assay Results

- Broad, shallow intercepts highlight the **presence of consistent near-surface mineralisation.**
- **Multiple higher-grade zones encountered within a broader mineralised footprint.**



Plan view showing the location of recent and historical drill holes at the Springfield Gold Deposit, including significant assays from the Company's first two drill holes (in yellow).

# Additional Potential in the Immediate Vicinity of the Springfield Deposit

## Springfield is one of multiple targets within the Greater Slashers Flat Project

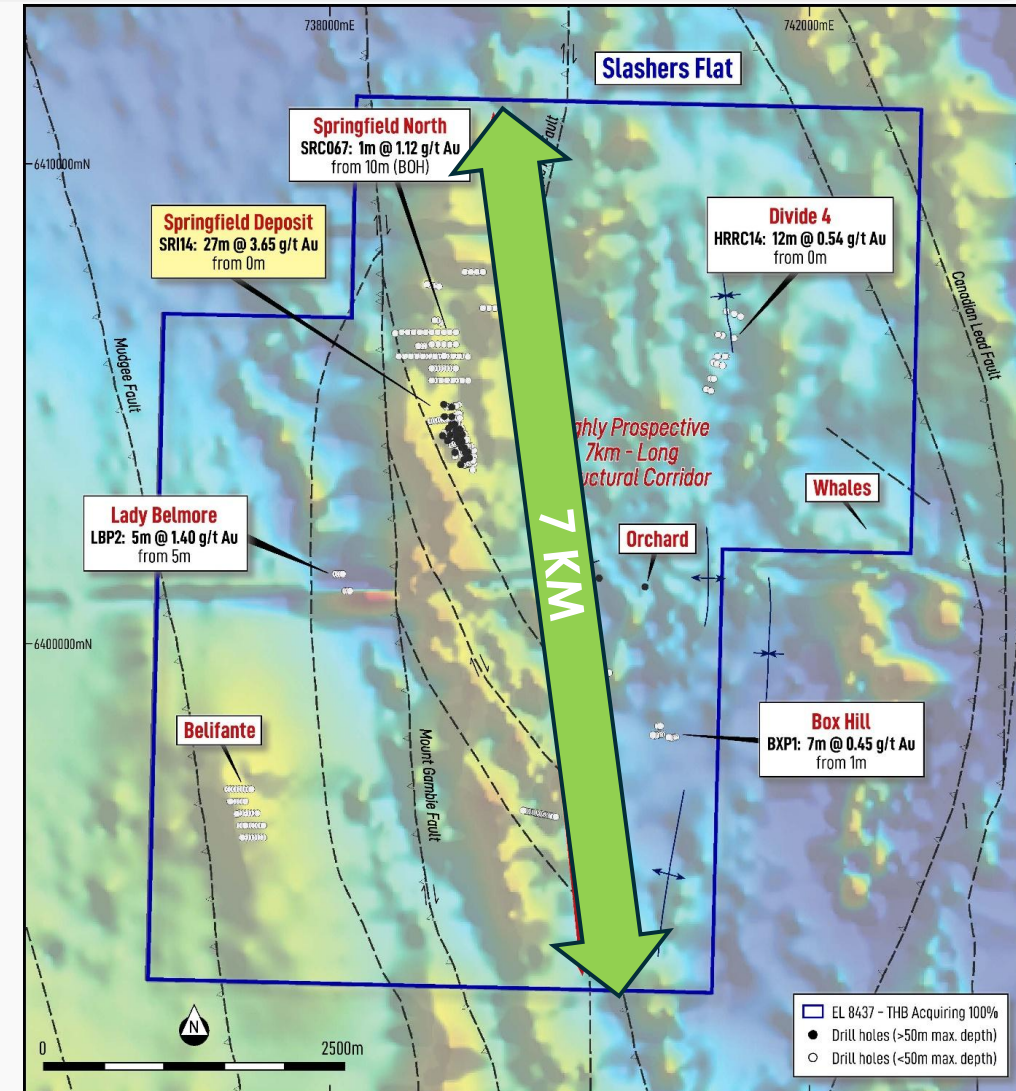
- Strong structural control on mineralisation at the Springfield Deposit
- Springfield Deposit is located within a highly-prospective 7km-long structural corridor:
  - Systematic soil sampling to commence as soon as land access agreements are secured

### Divide 4 Prospect

- Only 650m drilled previously (17 shallow holes)
- Many of these holes were drilled to the west of the **mineralised syenite intrusion**
- Extensive alteration evident, with significant intersections including:
  - **1m @ 1.63 g/t Au from 21.0m; and**
  - **1m @ 1.35 g/t Au from 11.0m**

### Lady Belmore Prospect

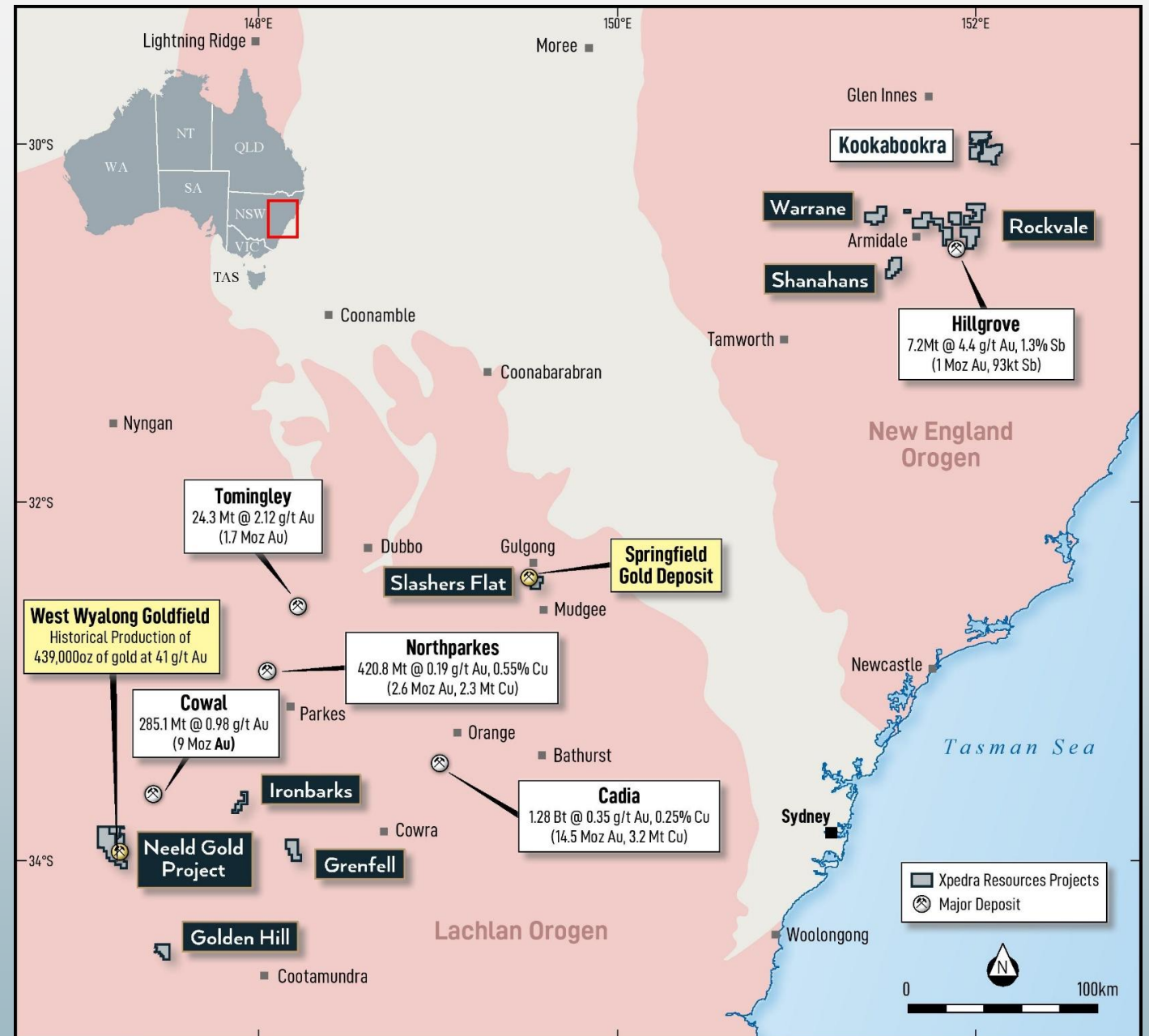
- Only 7 shallow holes drilled previously (20–30m deep; 178m)
- Testing quartz veins in felsic volcanics adjacent to an elongate syenite intrusion
- Extensive alteration evident, with significant intersections including:
  - **5.0m @ 1.40 g/t Au from 5.0m; and**
  - **5.0m @ 1.09 g/t Au from 20.0m**



# Neeld Gold Project Acquisition

A high-grade gold system with historical production of 439,000oz gold at 41g/t Au

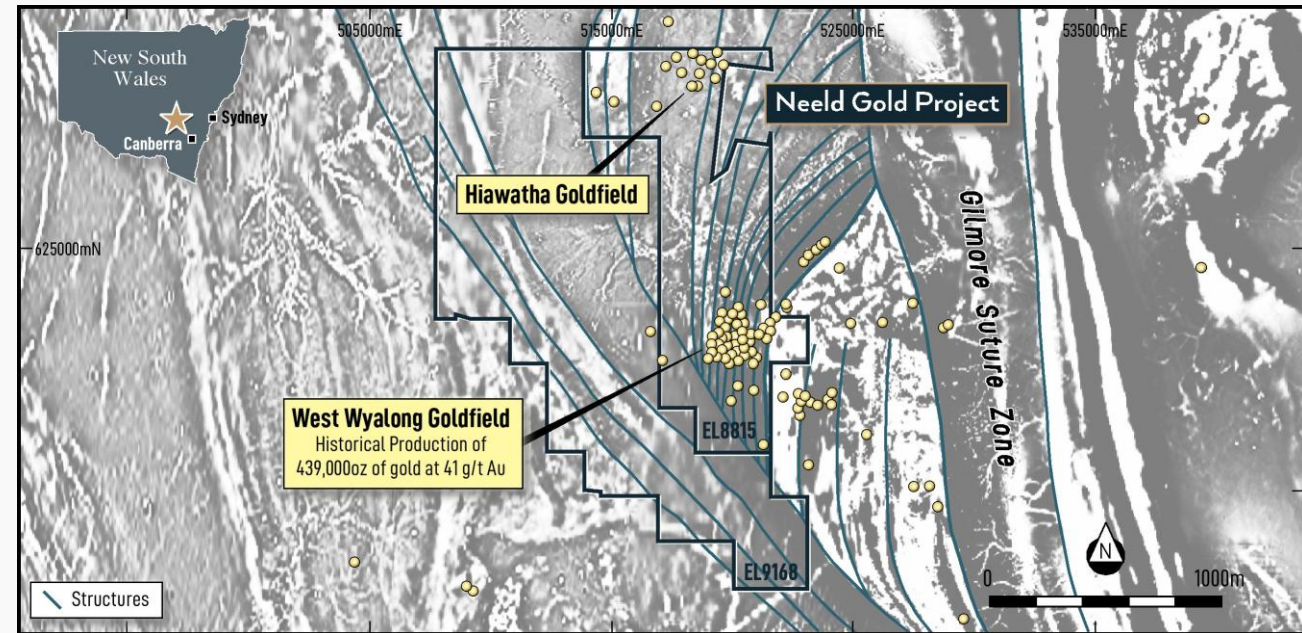
- Acquiring 100% of high-grade brownfields gold asset from Saturn Metals (ASX: STN)
- Located in a rich historical goldfield near West Wyalong in NSW, 125km north of Wagga Wagga
- Located close to several major operating mines in the NSW Lachlan Fold Belt



# High-Grade Neeld Gold Project

## Located in the well-endowed Lachlan Fold Belt – NSW

- Strategic 242km<sup>2</sup> landholding encompassing highly prospective geology and gold occurrences
- EL8815 covers both the West Wyalong Goldfields and the smaller Hiawatha Goldfield to the north
- Positioned within a favourable structural setting for gold mineralisation
- **Acquisition consideration:**
  - \$250,000 in cash
  - 44,000,000 XPD shares:
    - 2,000,000 Shares are not subject to escrow
    - 22,000,000 shares to be escrowed for 3 months from the date of issue
    - 20,000,000 shares to be escrowed for 6 months from the date of issue
  - Consideration includes 4,000,000 shares in XPD for acquiring and cancelling a 0.75% contingent vendor royalty interest at completion, thus no underlying royalties or other third party interests exist on the project.

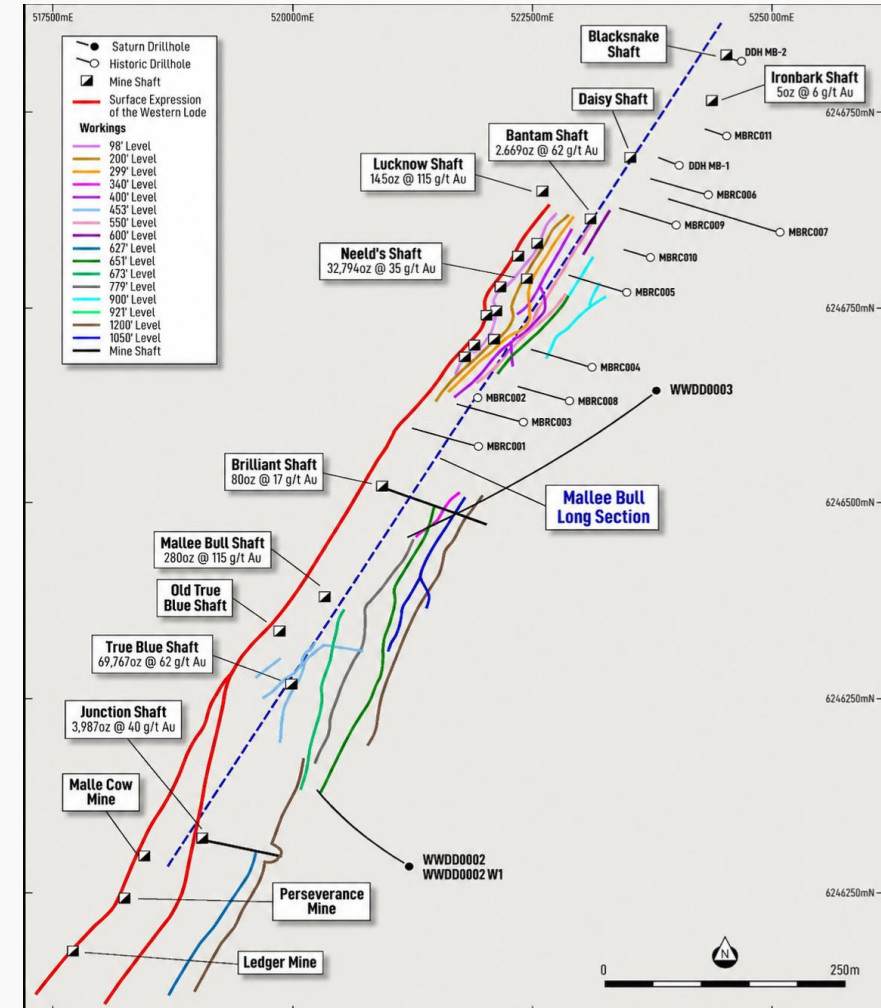


Gold occurrences at the Neeld Gold Project on magnetic background with structure interpretations

# Acquisition of the High-Grade Neeld Gold Project

Significant new addition to Xpedra's high-quality NSW portfolio

- Historical gold production:
  - **439,000 ounces of gold averaging an exceptional 41 g/t gold**
  - **Peak annual gold production of 44,675 in 1899 of bonanza 101 g/t gold**
  - **Shear hosted quartz veins**
  
- No substantial exploration undertaken since 1916:
  - **Only 16 holes drilled deeper than 100 metres**
  - **Only four holes drilled deeper than 200 metres**
  
- Significant exploration opportunity for Xpedra:
  - **Planning underway for maiden exploration activities**
  
- Systematic aircore drilling in the 1990s over historical tailings facilities delineated significant quantities of gold within 5 metres of surface:
  - **Opportunity for nearer term cash flow**

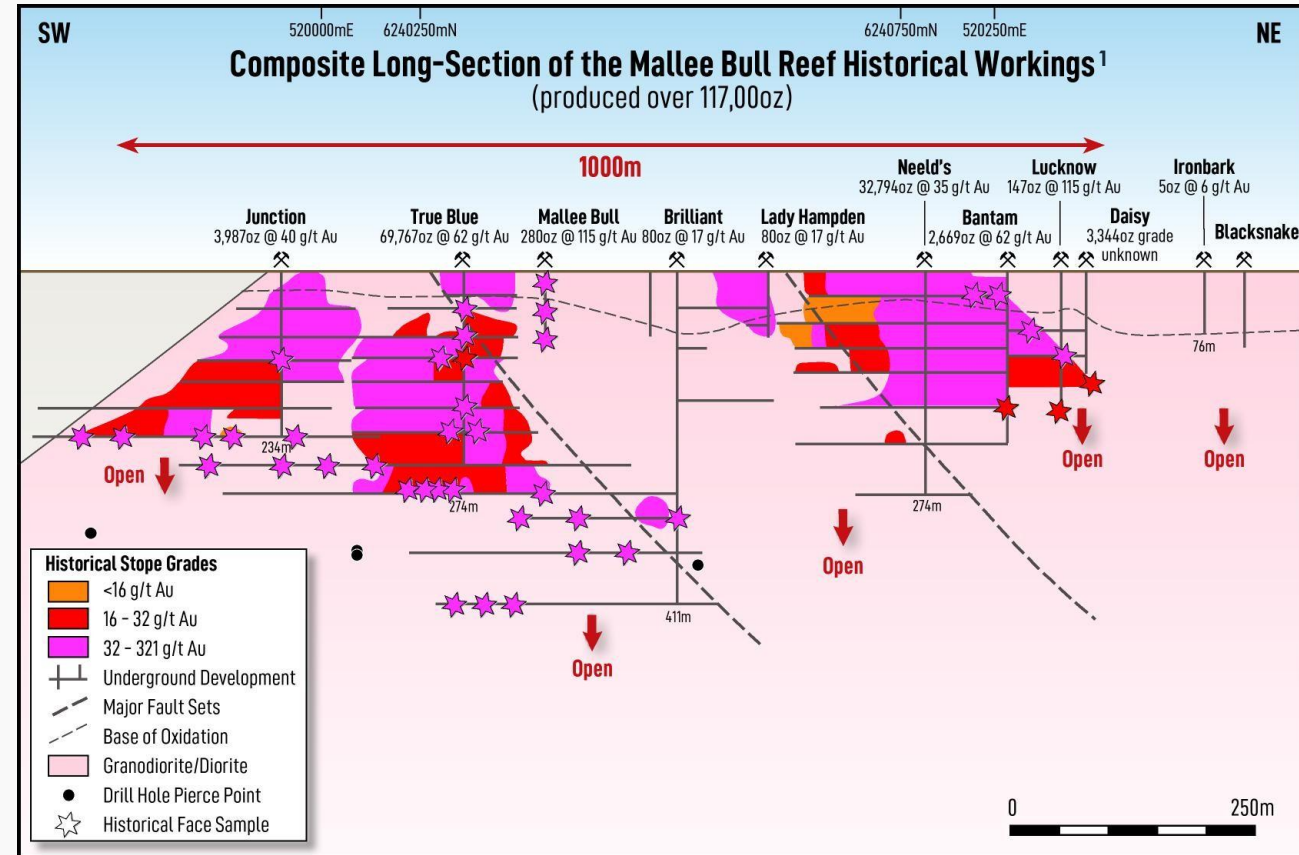


Plan view of historical level development along the Mallee Bull Lode, together with traces of historical drill holes

# High-Grade Neeld Gold Project

## Multiple near-term exploration targets

- Exceptional high-grade samples below historical stopes
- Mineralisation open both along strike and at depth
- Strike and depth extensions of bonanza grade veins essentially unexplored
- **Maximum depth of stoping 274 metres**
- **Maximum depth of development 411 metres**
- **Considerable ore may remain in-situ, unmined**

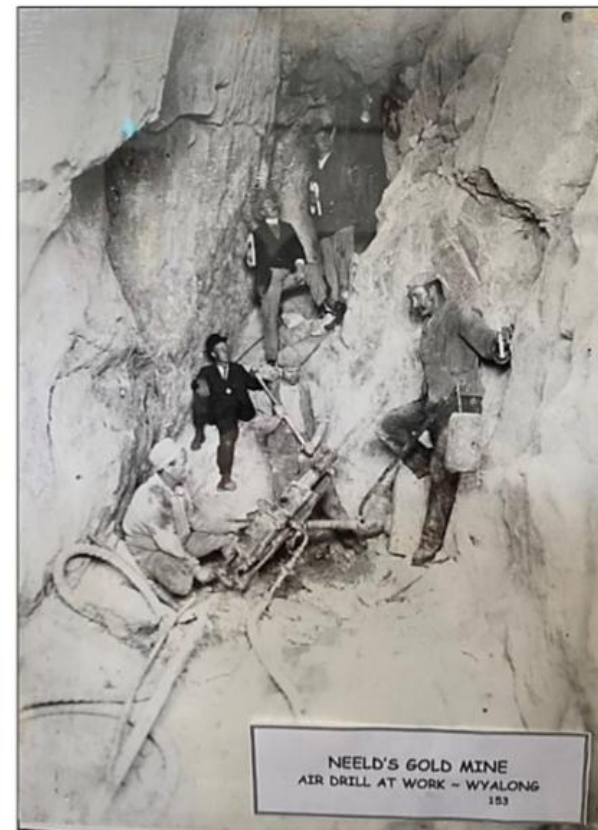


Diamond drilling by Saturn Metals at the Neeld Gold Project in 2021

# High-Grade Neeld Gold Project

## Historical recorded gold production figures from West Wyalong Goldfield

Year	Processed Ore		Ounces of Gold Produced	Recovered Grade g/t Au
	Short Tons	Metric Tonnes		
1894	6,358.00	5,767.88	9,649.00	52.03
1895	15,634.00	14,182.93	24,497.00	53.72
1896	18,297.00	16,598.76	33,495.00	62.76
1897	30,750.00	27,895.94	34,370.00	38.32
1898	30,940.00	28,068.30	34,582.00	38.32
1899	15,116.00	13,713.01	44,675.00	101.33
1900	22,387.00	20,309.15	32,425.00	49.66
1901	23,858.00	21,643.62	21,717.00	31.21
1902	18,430.00	16,719.42	20,718.00	38.54
1903	12,021.00	10,905.27	19,124.00	54.54
1904	18,733.00	16,994.30	28,388.00	51.96
1905	10,555.00	9,575.34	24,708.00	80.26
1906	14,791.00	13,418.17	22,936.00	53.17
1907	20,619.00	18,705.25	20,347.00	33.83
1908	19,348.00	17,552.22	16,586.00	29.39
1909	29,397.00	26,668.52	9,981.00	11.64
1910	20,655.00	18,737.91	9,091.00	15.09
1911	16,870.00	15,304.21	7,865.00	15.98
1912	6,941.00	6,296.77	5,882.00	29.05
1913	6,834.00	6,199.70	8,525.00	42.77
1914	6,084.00	5,519.31	5,406.00	30.46
1915	3,585.00	3,252.26	3,836.00	36.69
<b>Total</b>	<b>368,203.00</b>	<b>334,028.24</b>	<b>438,803.00</b>	<b>40.86</b>

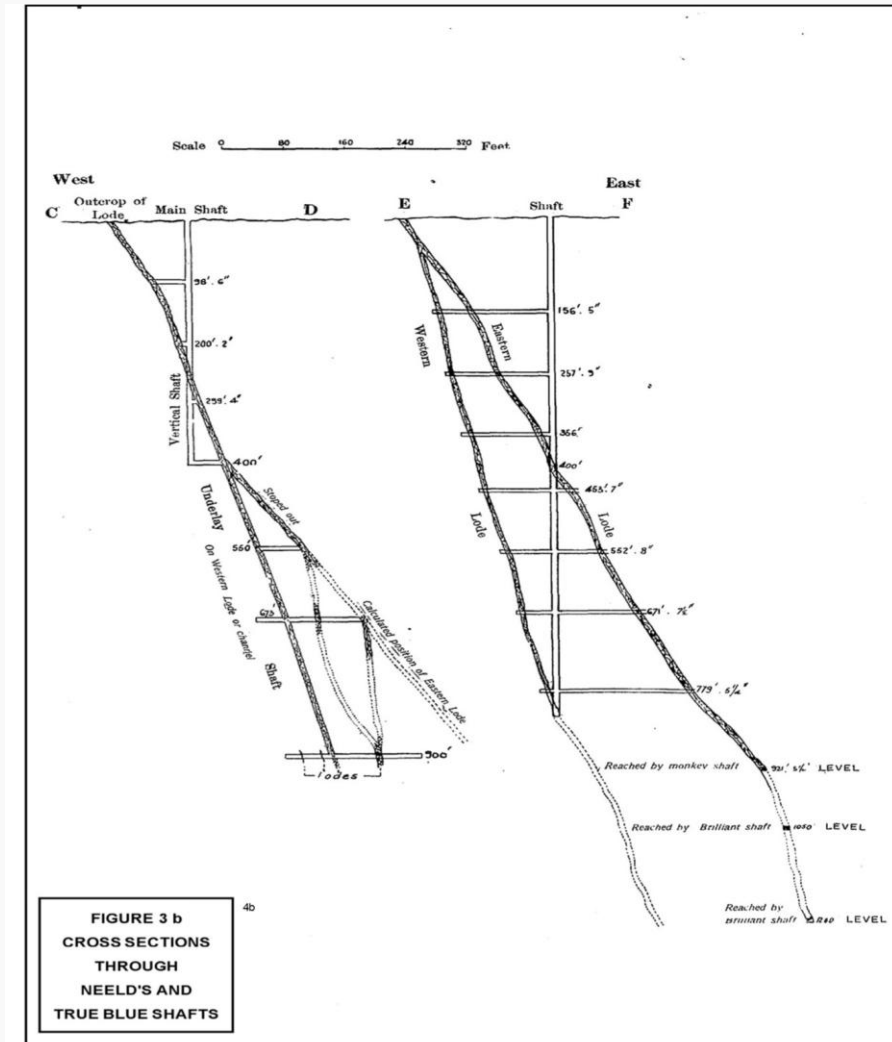


Historical mining within a ~3 metre stope at Neeld's Gold Mine

# High-Grade Neeld Gold Project

## Neeld Cross Section

- Cross Sections through the Neeld's (left) and True Blue shafts (right) - Mallee Bull Reef Line
- Bifurcating lodes and splays provide multiple exploration opportunities; reefs strike NE and dip east.



# Rockvale Project

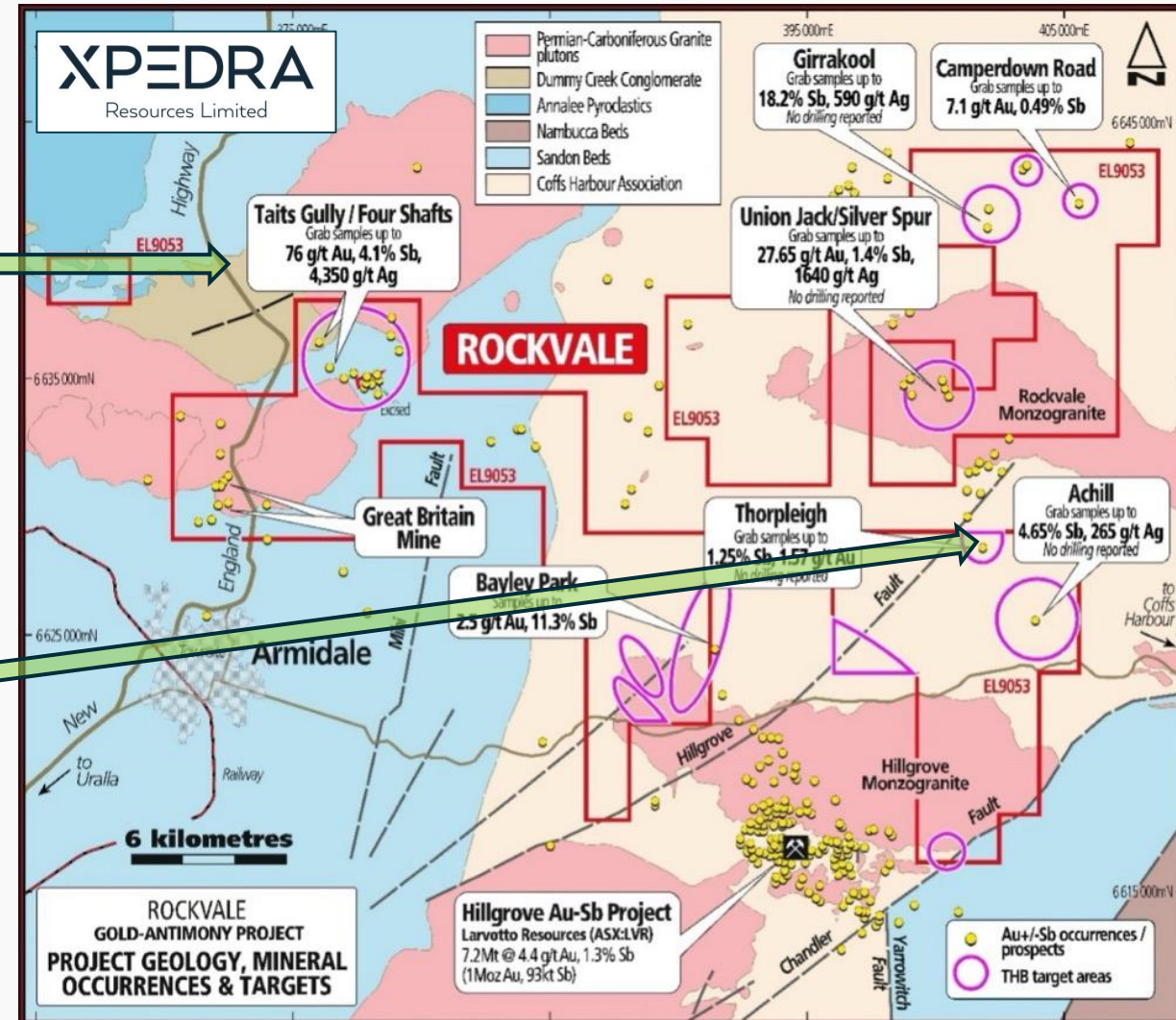
## First systematic work program – at the Achill Prospect

### Taits Gully Prospect

- Gold mineralisation within an 800m-long shear zone.
- Previously reported assays including grades of up to:
  - **76.0 g/t Au, 4.1% Sb and 4,350 g/t Ag**
- Historical workings include the Mary-Ann and Endeavour shafts (historical Au/Ag mines) which reportedly extend **up to 150m depth**

### Achill Prospect

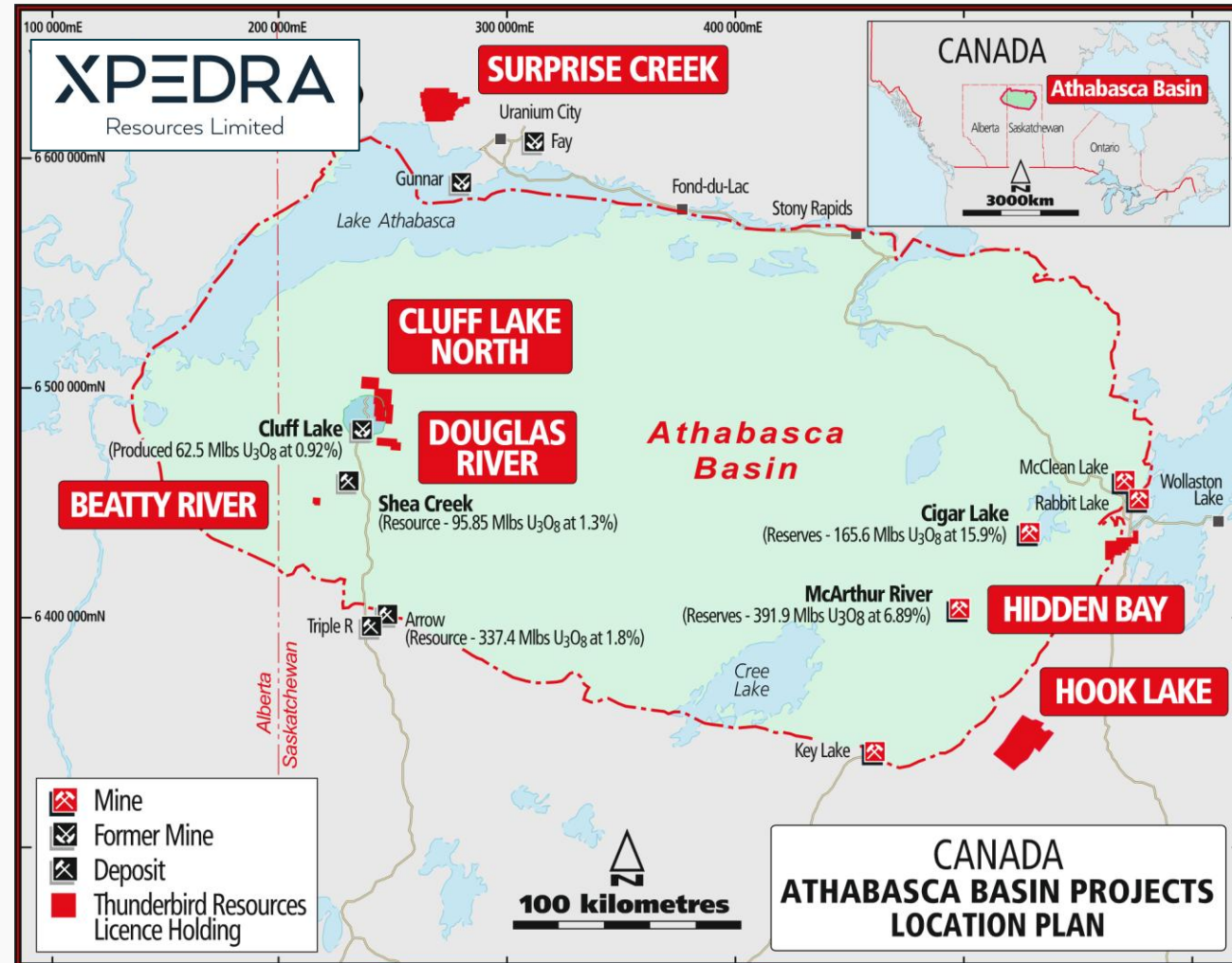
- **Rock chip samples** have returned assays including:
  - **4.65% Sb**
  - **3.1% Sb**
  - **2.65% Sb**
  - **265 g/t Ag**
- First pass soil sampling completed. Infill soil sampling planned for Q3 2026 to define drill targets.



# Uranium Projects –Athabasca Basin, Canada

Free-carried exposure through two JV's and a royalty at Hidden Bay

- **Mustang Energy Corp:**
  - Recently drilled 2,000m at Surprise Creek following-up an intersection of:
    - **2.1m @ 4.37% U<sub>3</sub>O<sub>8</sub>** from 57.0 metres
  - Also has a JV with XPD at Cluff Lake North
  
- **Powerhaus Uranium Limited:**
  - Recent Asset Sale Agreement, XPD<sup>1</sup>:
    - Receives \$50,000 cash
    - 1,200,000 Fully Paid Ordinary Shares in Powerhaus
    - Receives a 2% Royalty of Uranium Sales Price
  
- Other projects are all in good standing (no expenditure obligations) until 2030+ but actively seeking partners



<sup>1</sup> Subject to Powerhaus being admitted to the ASX

# Forward Work Program

PROJECT	2026										
	March	April	May	June	July	August	September	October	November		
<b><u>SPRINGFIELD GOLD PROJECT, NSW</u></b>											
Maiden Drilling Program	Maiden Drilling										
Drilling Assays		Assays				Assays					
Soil Sample Program - Data Acquisition and Assay Results										Assays	
Follow-Up Drilling Program				Follow-Up Drilling					Drilling		
<b><u>NEELD GOLD PROJECT, NSW</u></b>											
Tenement Transfer			Tenement Transfer								
Permitting and Prioritising Drilling Targets					Permitting and Prioritise Targets						
Maiden Drilling Program							Maiden Drilling				
Drilling Assays									Assays		
<b><u>ROCKVALE GOLD-ANTIMONY PROJECT, NSW</u></b>											
Achill Soil Sample Program - Acquisition and Assay Results									Soil Data Acquisition	Assays	

# Disclaimer and Forward-looking Statements

## DISCLAIMER

This presentation is for informational purposes only and does not constitute an offer to sell, or solicitation to purchase, any securities. Such Offer can be made only through proper subscription documentation and only to investors meeting strict suitability requirements. Any failure to comply with these restrictions may constitute a violation of applicable securities laws. In providing this presentation Xpedra Resources Limited ("XPD") has not considered the financial position or needs of the recipient. Persons needing advice should consult their stockbroker, bank manager, solicitor, attorney, accountant or other independent financial and legal advisors. The information contained in this presentation has not been independently verified. No representation, warranty or undertaking, expressed or implied, is made as to, and no reliance should be placed on, the fairness, accuracy, completeness or correctness of the information or the opinions contained herein. Neither the Company nor any of its respective affiliates, advisors or representatives shall have any liability whatsoever (in negligence or otherwise) for any loss arising from any use of this presentation or its contents or otherwise arising in connection with the presentation.

## FORWARD LOOKING STATEMENTS

This presentation contains forward looking statements. Forward looking statements are often, but not always, identified by the use of words such as "seek", "target", "anticipate", "forecast", "believe", "plan", "estimate", "expect" and "intend" and statements that an event or result "may", "will", "should", "could" or "might" occur or be achieved and other similar expressions. Indications of, and guidance on, future expected production or earnings and financial position and performance are also forward-looking statements. The forward-looking statements in this presentation are based on current expectations, estimates, assumptions, forecasts and projections about Xpedra Resources Limited ("Xpedra") and the industry in which it operates as well as other factors that management believes to be relevant and reasonable in the circumstances at the date such statements are made, but which may prove to be incorrect. The forward-looking statements relate to future matters and are subject to various inherent risks and uncertainties. Many known and unknown factors could cause actual events or results to differ materially from the estimated or anticipated events or results expressed or implied by any forward-looking statements. Such factors include, among others, changes in market conditions, future prices of metals and exchange rate movements, the actual results of production, development and/or exploration activities, variations in grade or recovery rates, plant and/or equipment failure and the possibility of cost overruns. Neither Xpedra, its related bodies corporate nor any of their directors, officers, employees, agents or contractors makes any representation or warranty (either express or implied) as to the accuracy, correctness, completeness, adequacy, reliability or likelihood of fulfilment of any forward-looking statement, or any events or results expressed or implied in any forward-looking statement, except to the extent required by law. You are cautioned not to place undue reliance on any forward-looking statement. The forward-looking statements in this presentation reflect views held only as at the date of this presentation. Other than as required by law and the ASX Listing Rules, Xpedra disclaims any duty to update forward looking statements to reflect new developments.

## NO NEW INFORMATION DISCLAIMER

The information in this presentation that relates to exploration results from the Springfield, Rockvale and Kookabookra Projects in NSW, Australia and the Surprise Creek Uranium Project in Canada is extracted from ASX announcements dated 13 November 2024, and 27 February, 31 March, 20 May, 3 and 21 July, 8 August, 22 and 29 September, 29 October and 5 November 2025 and 28 January 2026 and 21 April 2026 which are available to view on the Company's website ([www.xpedraresources.com](http://www.xpedraresources.com)). The Company confirms that it is not aware of any new information or data that materially affects the information included in the original market announcements and that all the material assumptions and technical parameters continue to apply and have not materially changed. The Company confirms that the form and context in which the Competent Person's findings are presented have not been materially modified from the original market announcement.

## PREVIOUSLY REPORTED RESULTS

There is information in this report relating to exploration results and historical production figures which were previously announced on 6 July 2022, 25 August, 22 and 29 September and 29 October 2025 and 5 November 2025, 28 January 2026 and 21 April 2026.

Other than as disclosed in those announcements, the Company confirms that it is not aware of any new information or data that materially affects the information included in the original market announcements, and that all material assumptions and technical parameters have not materially changed. The Company also confirms that the form and context in which the Competent Person's findings are presented have not been materially modified from the original market announcements.

# XPEDRA

Resources Limited

Contact Us

Scott Funston  
Managing Director  
[sfunston@xpedraresources.com](mailto:sfunston@xpedraresources.com)  
Mobile: +61 413 867 600

215 Hay St  
Subiaco WA 6008  
Australia



**Appendices**

# Springfield Gold Deposit

Cross-section through the Springfield Deposit highlighting current results (in yellow) alongside historical intercepts

- Initial drilling has cast uncertainty over the precise location of previous drill holes (potentially erroneously located by tens of metres)
- Correlation of results from historical drill holes v XPD's 27 recent drill holes to be assessed once all assay results are received in 3-5 weeks' time.
- Plans for further, follow-up, drilling will be based on XPD's results.

