

RIU Sydney Resources Round-up Presentation

PTR Minerals Limited (ASX: **PTR**) (**PTR Minerals** or the **Company**), is pleased to enclose a copy of the presentation to be delivered by Executive Director Rob Sennitt at the RIU Sydney Resources Round-up conference at 11:30am (AEST) on Wednesday 6 May 2026.

The presentation will be streamed live and free via the link accessible at:

<https://www.riusydneystresourcesroundup.com.au/livestreamcmc>

- END -

This announcement has been authorised for release on the ASX by the Company's Board of Directors.

For further information:

Peter Reid

Chief Executive Officer
preid@petratherm.com.au
0435 181 705

Media and Broker Contact

Jason Mack

White Noise Communications
jason@whitenoisecomms.com
0400 643 799



The Muckanippie Titanium Project

A Significant Critical
Mineral Discovery

Company Presentation

May 2026

ASX: **PTR**

ptrminerals.com.au



Compliance Statements

Disclaimer

This presentation has been prepared by PTR Minerals Limited (PTR Minerals). The information contained in this presentation is a professional opinion only and is given in good faith. Certain information in this document has been derived from third parties and though PTR Minerals has no reason to believe that it is not accurate, reliable or complete, it may not have been independently audited or verified by PTR Minerals.

Any forward-looking statements included in this document involve subjective judgment and analysis and are subject to uncertainties, risks and contingencies, many of which are outside the control of, and maybe unknown to, PTR Minerals. In particular, they speak only as of the date of this document, they assume the success of PTR Minerals' strategies and they are subject to significant regulatory, business, competitive and economic uncertainties and risks. Actual future events may vary materially from the forward-looking statements and the assumptions on which the forward-looking statements are based. Recipients of this document ("Recipients") are cautioned not to place undue reliance on such forward-looking statements.

PTR Minerals makes no representation or warranty as to the accuracy, reliability or completeness of information in this document and does not take responsibility for updating any information or correcting any error or omission which may become apparent after this document has been issued. To the extent permitted by law, PTR Minerals and its officers, employees, related bodies corporate and agents ("Agents") disclaim all liability, direct, indirect or consequential (and whether or not arising out of the negligence, default or lack of care of PTR Minerals and/or any of its Agents) for any loss or damage suffered by a Recipient or other persons arising out of, or in connection with, any use or reliance on this presentation or information. All amounts are in Australian dollars (AUD) unless stated otherwise.

Competent Persons Statement

The information in this report that relates to Exploration Targets and Exploration Results is based on information compiled by Mr Peter Reid, who is a Competent Person, and a Member of the Australian Institute of Geoscientists. Mr Reid is not aware of any new information or data that materially affects the historical exploration results included in this report. Mr Reid is an employee of PTR Minerals Ltd. Mr Reid has sufficient experience that is relevant to the style of mineralization and type of deposit under consideration and to the activity being undertaken to qualify as a Competent Person as defined in the 2012 Edition of the 'Australasian Code for Reporting of Exploration Results, Mineral Resources and Ore Reserves'. Mr Reid consents to the inclusion in the report of the matters based on his information in the form and context in which it appears.

JORC Information and Compliance Note

Further details (Including JORC 2012 Code Reporting Tables, where applicable) for the information included in this Presentation can be found in the following PTR Minerals Limited announcements previously lodged with the ASX:

Footnotes

1. The purpose of the figure is to illustrate the geographical proximity **only** of the Project Area to other mineral occurrences and geographical locations.
2. Muckanippie Tenement Granted – 14 November 2022
3. Farm-in Agreement Expands Muckanippie Project – 18 April 2024
4. High-Grade Titanium Rich Heavy Mineral Sands at Muckanippie – 11 September 2024
5. Drill Results Confirm Major HMS Discovery at Rosewood – 04 December 2024
6. Drilling Confirms Potential for World-Class Titanium Project – 06 February 2025
7. New Style of Titanium Mineralisation at Muckanippie – 19 February 2025
8. Drilling at Rosewood Returns Best Results to Date – 29 May 2025
9. Impressive Drilling Results Expand Rosewood – 23 June 2026
10. Drill Program Extends Rosewood and Identifies New HMS Zone – 01 October 2025
11. Resource Drilling Underway at Rosewood – 03 November 2025
12. Exploration Success Continues at Muckanippie – 17 November 2025
13. Resource Drilling Confirms Consistent High-Grade Titanium – 19 December 2025
14. Drilling Reinforces Quality and Scale Potential of Rosewood – 22 January 2026
15. Best Results to date from Rosewood Resource Drilling – 17 February 2026
16. Positive Metallurgical Performance – 16 March 2026
17. Strategic Appointments – 10 April 2026
18. Quarterly Activities Report for period ended 31 March 2026
19. Mineral Resource Estimation on track – 6 May 2026



Investment Highlights

- ➔ District scale, high-grade titanium discovery in Tier-1 mining jurisdiction
- ➔ Flat lying, thick, continuous, near-surface mineralisation with exploration upside
- ➔ Favourable mineral characteristics generate strong recoveries through conventional processing
- ➔ Initial test work identified high quality titanium products with minimal impurities
- ➔ Close to transport infrastructure with export pathways to global markets
- ➔ Robust balance sheet with \$15.2m cash (31 March 2026)
- ➔ Highly-experienced team with discovery track record and mineral sands expertise



Corporate Overview

Shares on Issue¹

395.1M

Share Price (04/05/2026)

A\$0.10

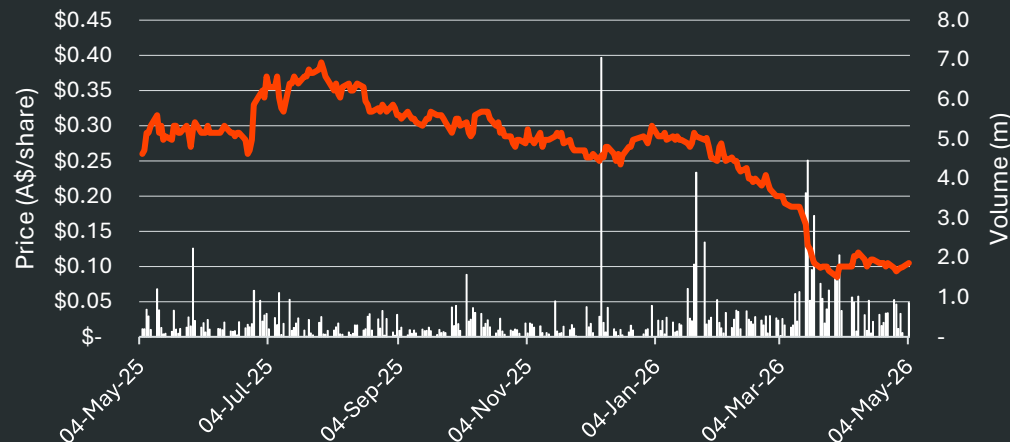
Market Cap (undiluted)

A\$39.5M

Cash (31/03/2026)

A\$15.2M

PTR Share Price and Volume Chart



¹ - In addition to 395.1m shares on issue, PTR Minerals has issued 4.175m unlisted options and 7.3m Performance Rights

Board

Derek Carter Non-Executive Chairman

A geologist with over 45 years Corporate and field experience. He is a founder of the Minotaur group and a joint recipient of Explorer of the Year (AMEC) for the discovery of the Prominent Hill Copper Gold Deposit.

Simon Taylor Non-Executive Director

A resources industry executive with over 30 years' experience in geology, finance and corporate management at CEO and Board levels. Managing Director of Stellar Resources.

Simon O'Loughlin Non-Executive Director

Founder of O'Loughlins Lawyers. Extensive Experience in providing advice in respect of equity capital markets, ASX and ASIC rules. Has held many Non-Exec Directorships on ASX listed companies.

Donald Stephens Non-Executive Director

Chartered Accountant and corporate advisor with over 25 years experience in the accounting, mining and services industries, including 14 years as a partner of HLB Mann Judd (SA).

Rob Sennitt Executive Director

Has over 35 years experience in the natural resources sector. Rob was previously Managing Director of Mineral Deposits Limited which owned 50% of the TiZir Joint Venture which comprised the GCO Mineral Sands mine and the TTI titanium slag smelter.

Key Executive Team

Peter Reid Chief Executive Officer

An exploration geologist with 30 years' experience. Exploration successes have included discoveries of both the Prominent Hill Copper Gold Deposit and the Muckanippie Titanium Project. Founding CEO of PTR Minerals.

Victor Araújo Head of Project Development

Has over 28 years in project analysis, development, engineering and construction primarily focused on the mineral sands mining and processing industries. He has held numerous senior leadership positions with prominent mineral sands organisations globally.

Victor Bruinsma Metallurgy

Is a qualified chemical engineer and former Principal Metallurgist at Iluka Resources. He has more than 30 years experience in plant operations and project development in the titanium minerals industry.

Neil Patten-Williams Marketing

Over 24 years experience in marketing mineral sands products to global customers for a range of Australian mineral sands companies including Sheffield Resources and Doral Group.



PTR Portfolio: Highly prospective for Critical Minerals



Muckanippie Titanium Project

- ▶ Emerging camp style titanium province

Woomera Copper-Gold Project

- ▶ Located in World-Class Copper-Gold Olympic Province
- ▶ High calibre Tier-1 sized drill ready targets

Mabel Creek Copper-Gold Project

- ▶ Large holding over the northern Olympic Copper-Gold Province
- ▶ Drilling has defined two Copper-Gold alteration systems
- ▶ Several drill ready Tier-1 sized targets

Comet Rare Earths Project

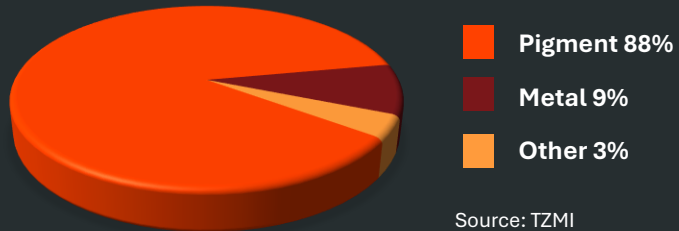
- ▶ Exceptional clay hosted Rare Earth drill intercepts – 3 major Prospects
- ▶ Large layered intrusions – Au-PGE anomalies



Titanium: A critical metal where high-grade feedstock supply is declining



Titanium Demand



TiO₂ Pigment

Demand strongly correlated with global GDP

Function: Opacity and brightness

Industry: Paints, paper, plastics, inks, coatings

Metal

Fast growing sector (15.7% 2020-2024 CAGR)

Function: Strong, lightweight, corrosion resistant

Industry: Aerospace, defence, medical implants

Other

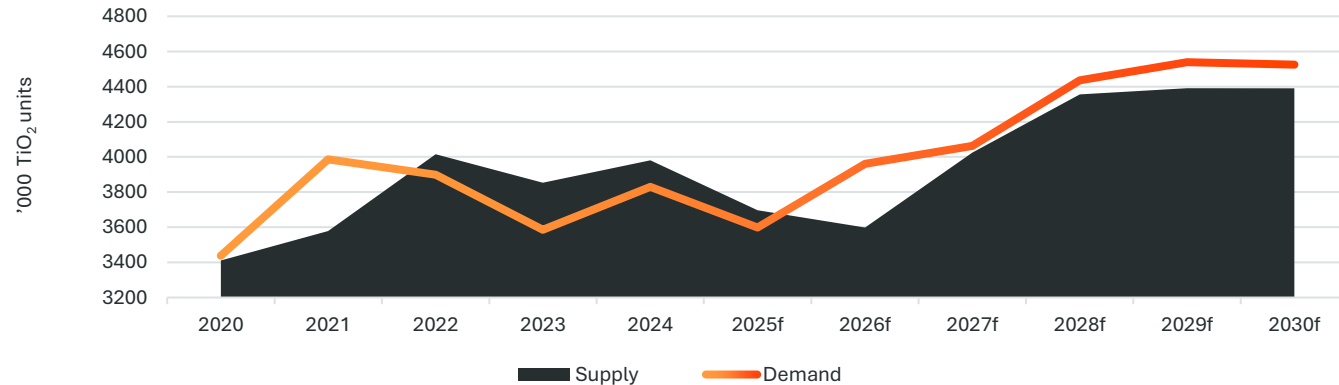
Welding is a key market

Function: Key constituent of welding flux

Industry: Construction, manufacturing, steel fabrication

Market for chloride grade feedstock

Source: TZMI December 2025



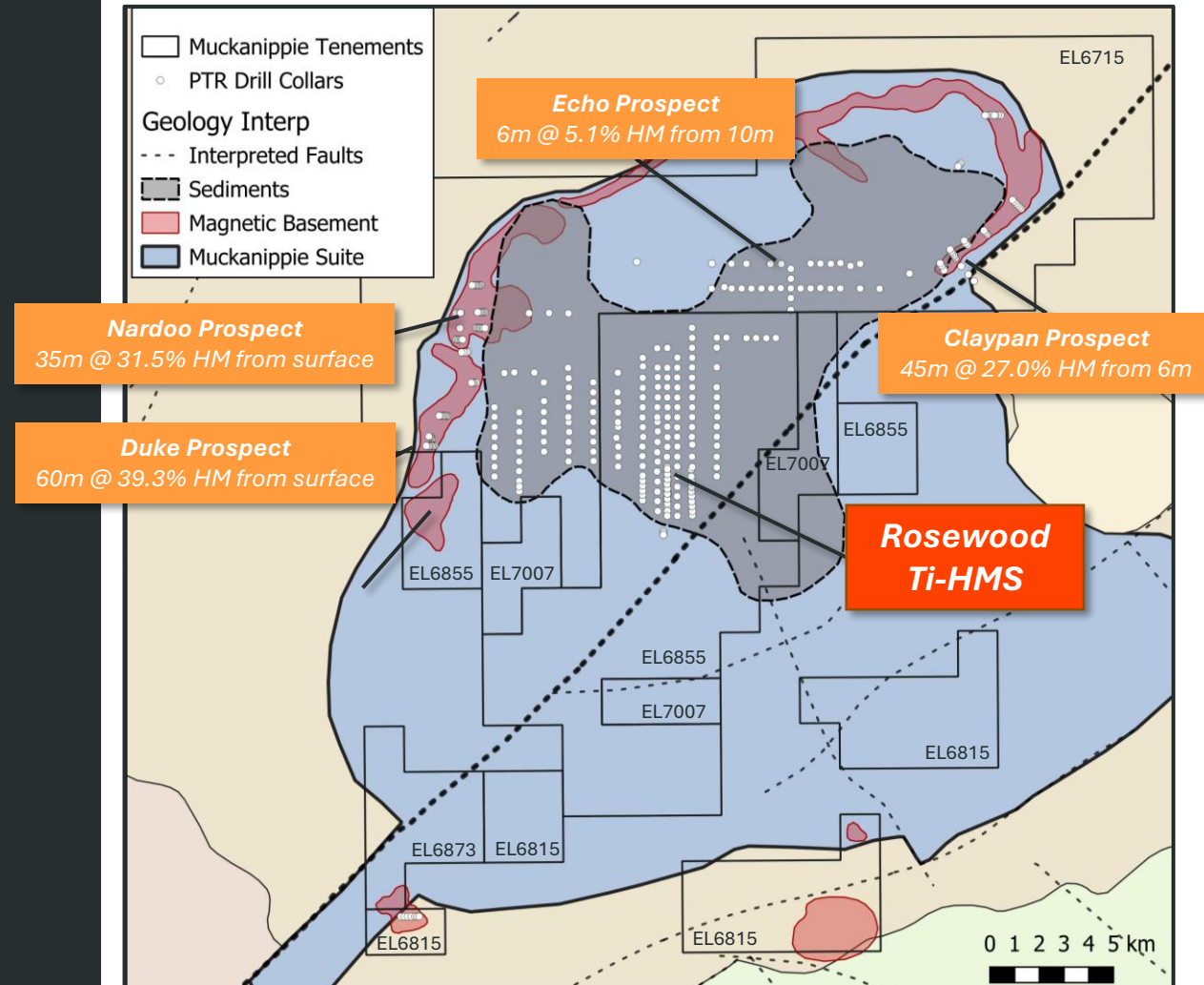
Market Update

- ▶ In 2025 macroeconomic uncertainty and subdued housing activity levels impacted underlying demand for pigment, leading to increased inventories and reduced titanium feedstock demand
- ▶ Recent plant closures, production cuts (planned and unplanned) and anti-dumping duties on Chinese pigment has reduced inventory overhang with a forecast large deficit in 2026
- ▶ Due to cost pressures and reduced operating rates, chloride pigment feedstock mix has shifted away from high grade slag, UGS, SR, bulk rutile to chloride ilmenite/leucoxene
- ▶ Market deficit expected to continue in the near term given:
 - Continued growth in pigment demand and pigment operating rates
 - Constrained feedstock supply with mine closures, depleting reserves and falling grades at current mines, supply disruptions and limited new investment
 - Discovery, environmental, funding and sovereign risk issues impacting potential new supply

Muckanippie Project: High-Grade, District Scale Titanium Discovery



- ▶ The Muckanippie Suite is a **rare, highly fertile layered intrusion**
- ▶ Project geology associated with rich metal and critical minerals deposits globally.
- ▶ HM sourced from surrounding **titanium rich basement rocks**
- ▶ The **Rosewood Prospect contains two large high-grade strandlines** associated with an ancient coastline (sedimentary) environment
- ▶ Potential for multiple large-scale, high-grade HM systems located within 10km of Rosewood:
 - ▶ **Echo** is a major sediment-hosted HM zone
 - ▶ **Saprolite prospects** Duke, Nardoo and Claypan occur along **prominent magnetic trends (over 16km)**

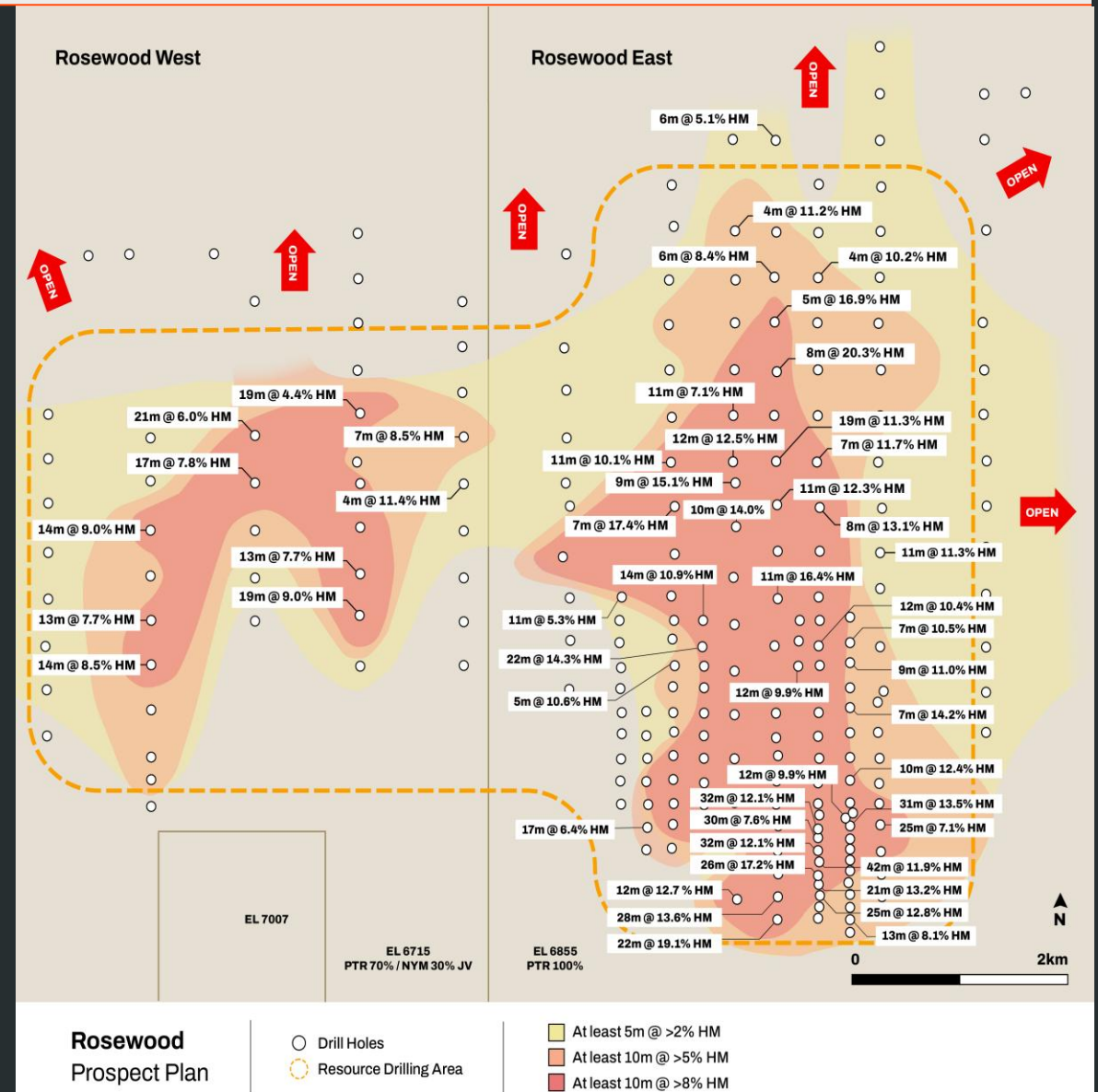


Geology Map of Muckanippie Area, Tenements and Prospects

Rosewood Project: High-Grade Marine Strandlines



- ▶ Mineralisation extends over a **continuous 40km²**
- ▶ **Two extensive high-grade mineralised zones** (22km² area) where all holes drilled contain significant intercepts including:
 - ▶ **33m @ 15.7% HM** from 10m
 - ▶ **42m @ 11.9% HM** from surface
 - ▶ **32m @ 13.0 % HM** from 10m
 - ▶ **22m @ 19.1 % HM** from 8m
 - ▶ **11m @ 16.4 % HM** from 6m
 - ▶ **6m @ 36.4% HM** from 27m
 - ▶ **4m @ 27.9% HM** from 8m
 - ▶ **7m @ 29.7% HM** from 29m
- ▶ Drill intercepts over southern zone are at least **10m @ > 8% HM**
- ▶ **Mineralisation remains open** in multiple directions
- ▶ **Maiden Resource** on target for Q2 2026

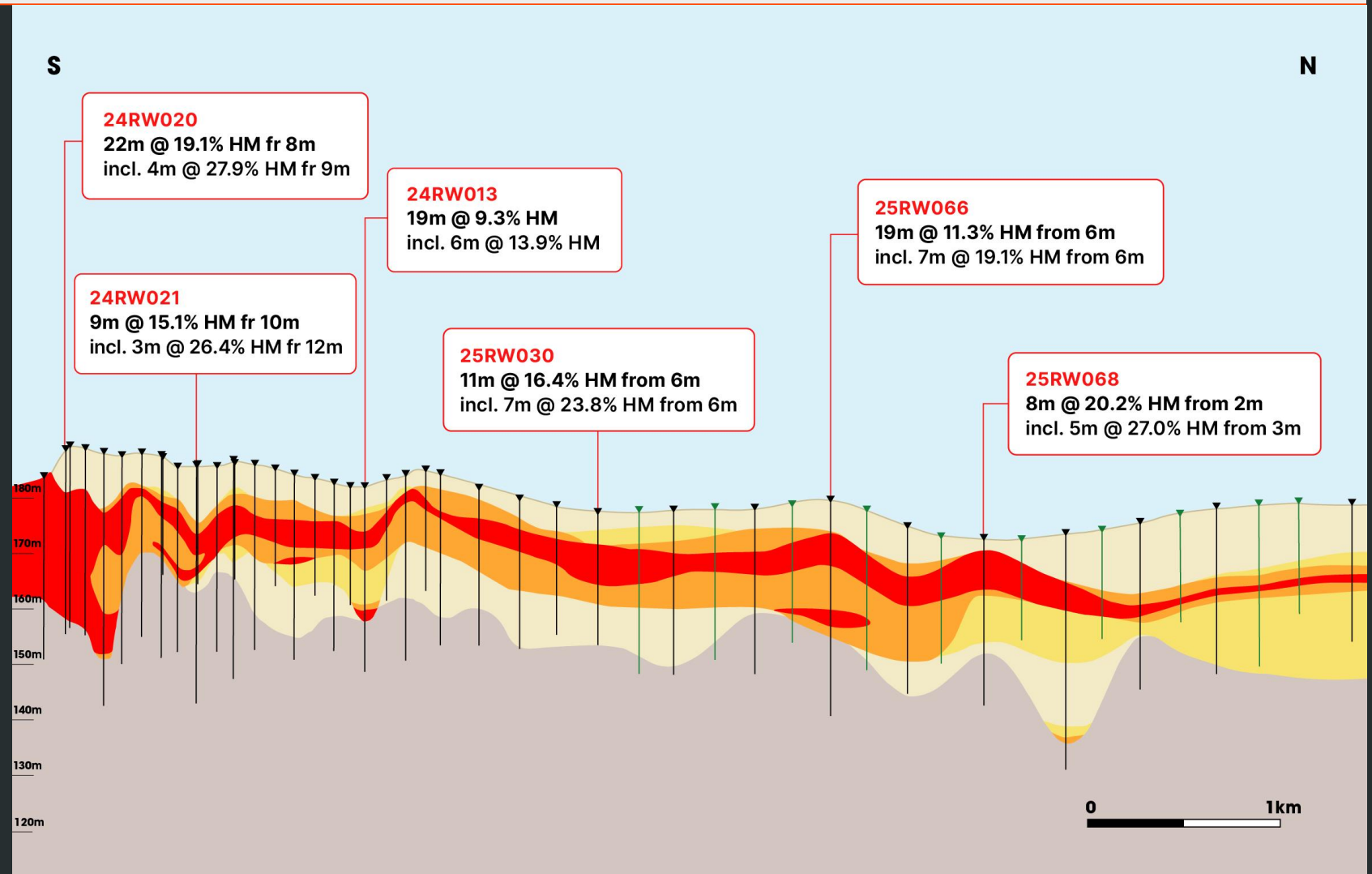


Footnotes 5, 6, 8, 9, 10, 11, 12, 13, 14, 15 and 16

Rosewood Project: Geological Cross Section



- ▶ Cross section shows **continuous high-grade** nature of the Rosewood Prospect
- ▶ Mineralisation starts at **shallow depths** typically from 5 to 8m
- ▶ Mineralisation **thickness** ranges from 5m - 30m
- ▶ **High-Grade upper zone (~70% of mineralisation)** with underlying channel zones



Rosewood Prospect
Line 421000E
Long Section

Sediments
 Basements
 >1% HM
 >3% HM
 >12% HM

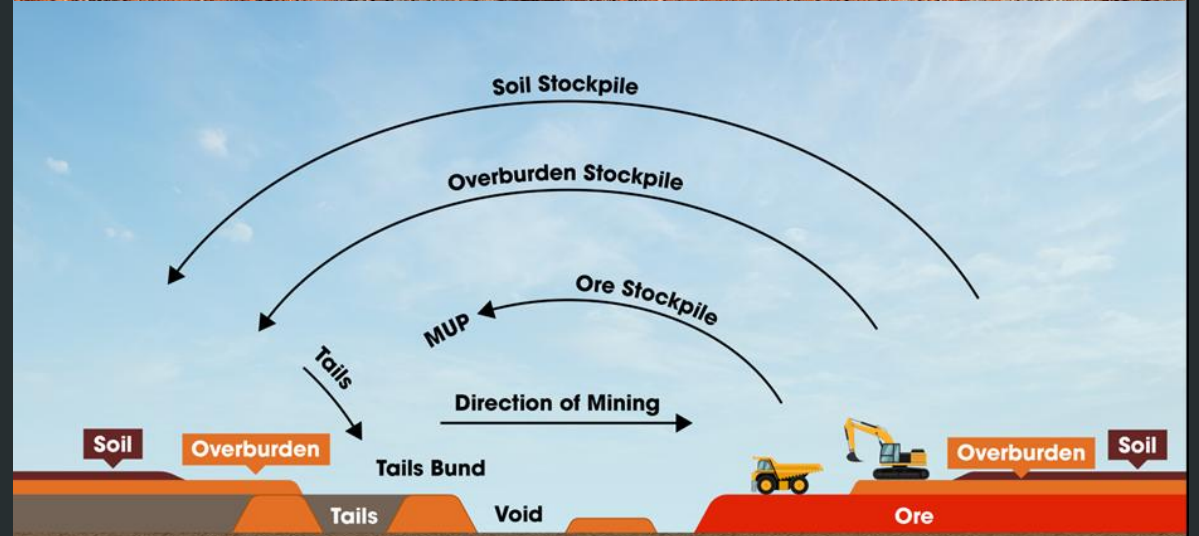
Drillhole
 Drillhole - Pending Assays

Footnote 19

Rosewood Project: **Proposed Open Pit mining**

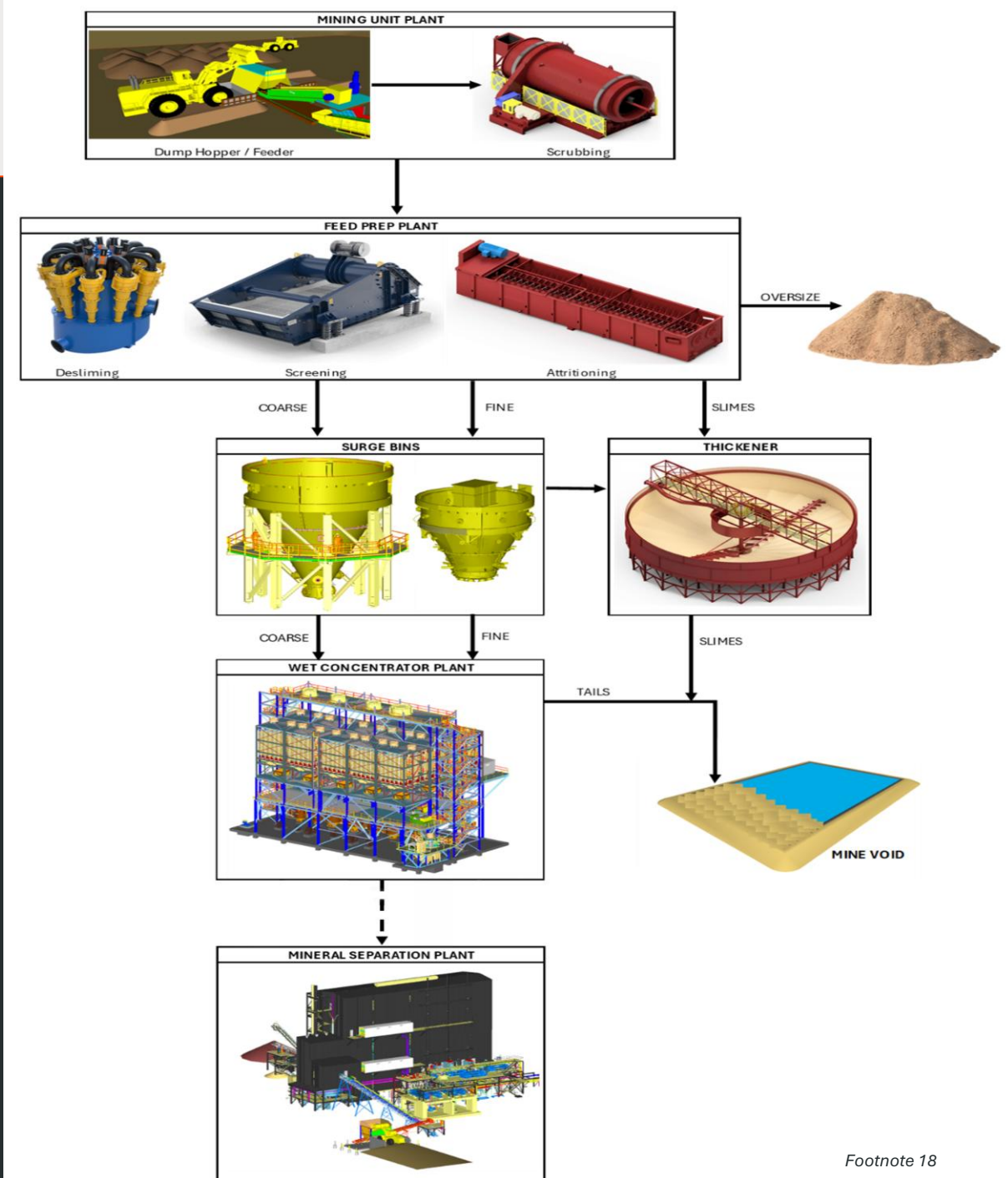


- ▶ Rosewood **mineralisation benefits from being flat lying, thick, continuous and close to surface**
- ▶ Preliminary mining schedule study work indicates that Rosewood is expected to be **amenable to conventional open-pit mining** and in-pit tailing disposal

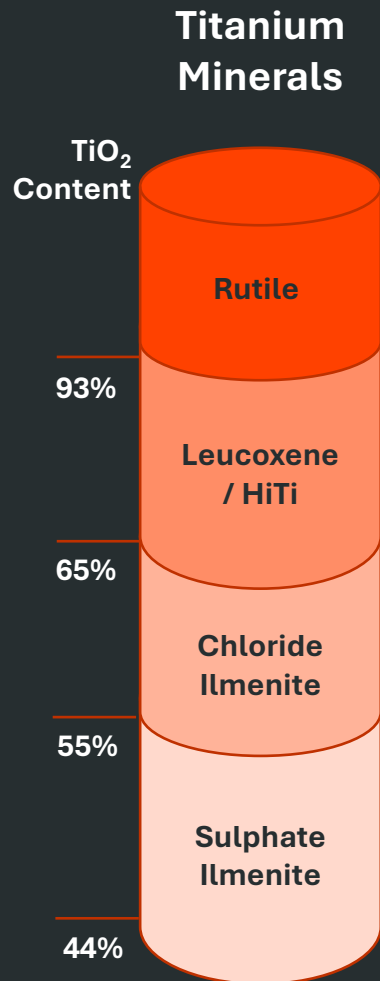


Rosewood Project: Conventional Processing

- ▶ Processing benefits from **high-grade, coarse nature** and **lack of impurities** of Rosewood mineralisation
- ▶ Simple preliminary flowsheet:
 - ▶ **Feed Preparation Process**
 - ▶ Scrubbing and Attritioning to liberate composite and coated particles
 - ▶ **Wet Concentrator Plant**
 - ▶ Best results when separated into separate size fractions
 - ▶ **Mineral Separation Plant**
 - ▶ Efficient magnetic and electrostatic separation
- ▶ Metallurgical testing continues to evaluate multiple beneficiation and extractions options



Rosewood Project: Preliminary Test Work Results



- ▶ Initial test work successful in producing **high-quality saleable products**
- ▶ Gravity separation successful in producing **high-quality HMC**
 - ▶ **HM recovery: 91.3%**
 - ▶ **HM grade: 90.8%**
- ▶ Mineral separation test work successful in upgrading HMC:
 - ▶ **Leucoxene-dominant assemblage**
 - ▶ **Five product streams ranging from 55 – 84% TiO₂ with an average product grade of 67% TiO₂**
- ▶ TiO₂ content, low level impurities and coarse grain size **positions products favourably for use in preferred chloride pigment production**

Rosewood Project: Ongoing Metallurgical Test Work



- ▶ Test work continues to **further define, simplify and improve flowsheet design and product definition**
 - ▶ Metallurgical and Marketing expertise acquired
- ▶ **Mineralogical characteristics** provide for **simplified processing options** and **production of high-quality saleable products**
- ▶ **Second Bulk Sample** processing focused on:
 - ▶ Improve recovery of higher-grade material and other product credits
 - ▶ Upgrade product specs including titanium content of product suite
 - ▶ Consideration of potential processing optimisation pathways
- ▶ **Customer interaction** to drive product development to meet multiple identified market opportunities



▲ *Wet gravity separation*



▶ *Roll magnetic separation*

Footnote 20

Well Located: **Efficient Access to International Markets**



Less than 40km from rail head providing rail connection to:

- ✓ Whyalla
 - ✓ Darwin
 - ✓ Port Adelaide
 - ✓ Fremantle
- + Each port offers opportunity for further value-add processing options



Muckanippie Project: Significant work streams underway



Key workstreams include:

▸ Resource

- Maiden JORC Resource due Q2 2026

▸ Metallurgical Testing

- Further metallurgical testing including enhanced product separation studies
- Plant design studies (including preliminary capital/operating cost estimates)

▸ Product Marketing

- Customer interaction to assist in product definition and ultimately offtake arrangements

▸ Environmental baseline and infrastructure studies

- Commenced SA Government Scoping Report process

▸ Drilling

- Water
- Saprolite targets





Contact

Peter Reid
Chief Executive Officer

E: preid@ptrminerals.com.au

T: 0435 181 705

Rob Sennitt
Executive Director

E: rsennitt@ptrminerals.com.au

T: 0414 295 264

ASX: **PTR**
ptrminerals.com.au



*Rosewood Prospect: +106 to 125 μ m
- HM Composite Fraction Sample*