



# evresources

## Corporate Presentation

High-Grade Antimony. **Near-Term  
Production.** North Americas Focus

**RIU Resources Round-Up, May 2026**  
**ASX: EVR**



# DISCLAIMER

This presentation has been prepared by EV Resources Limited (ASX: EVR) (EVR or the Company). It contains general information about the Company's activities current as at the date of the presentation. The information is provided in summary form and does not purport to be complete. This presentation is not to be distributed (nor taken to have been distributed) to any persons in any jurisdictions to whom an offer or solicitation to buy shares in the Company would be unlawful. Any recipient of the presentation should observe any such restrictions on the distribution of this presentation and warrants to the Company that the receipt of the presentation is not unlawful. It should not be considered as an offer or invitation to subscribe for or purchase any securities in the Company or as an inducement to make an offer or invitation with respect to those securities. No agreement to subscribe for securities in the Company will be entered into on the basis of this presentation or any information, opinions or conclusions expressed in the course of this presentation. This presentation is not a prospectus, product disclosure document or other offering document under Australian law or under any other law. It has been prepared for information purposes only and is not a recommendation as to whether to invest in EVR shares. The information contained in this presentation is not investment or financial product advice and is not intended to be used as the basis for making an investment decision. The presentation has been prepared without taking into account the investment objectives, financial situation or particular needs of any particular person. Unless otherwise specified, data and tables set out in this presentation are based on EVR management estimates.

This presentation does not include all available information on EVR, and any potential investor should also refer to EVR's Annual Reports and ASX releases and take independent professional advice before considering investing in EVR.

No representation or warranty, express or implied, is made as to the fairness, accuracy, completeness or correctness of the information, opinions and conclusions contained in this presentation. To the maximum extent permitted by law, none of EVR or its directors, or any of their employees or agents, nor any other person accepts any liability, including, without limitation, any liability arising out of fault of negligence, for any loss arising from the use of the information contained in this presentation. In particular, no representation or warranty, express or implied is given as to the accuracy, completeness or correctness, likelihood of achievement or reasonableness or any forecasts, projections, prospects or returns contained in this presentation nor is any obligation assumed to update such information. Such forecasts, prospects or

returns are by their nature subject to significant uncertainties and contingencies. Past performance is no guarantee of future performance.

This presentation may contain "forward-looking statements" within the meaning of securities laws of applicable jurisdictions. Forward-looking statements can generally be identified by the use of forward looking words such as "may", "will", "expect", "intend", "plan", "estimate", "anticipate", "believe", "continue", "objectives", "outlook", "guidance" or other similar words, and include statements regarding certain plans, strategies and objectives of management and expected financial performance.

These forward-looking statements involve known and unknown risks, uncertainties and other factors, many of which are outside the control of EVR and any of its officers, employees, agents or associates. Actual results, performance or achievements may vary materially from any projections and forward-looking statements and the assumptions on which those statements are based. Readers are cautioned not to place undue reliance on forward-looking statements and EVR assumes no obligation to update such information.

This presentation contains information relating to exploration results extracted from ASX announcements reported previously in accordance with the 2012 edition of the 'Australasian Code for Reporting of Exploration Results, Mineral Resources and Ore Reserves' (2012 JORC Code). The Company confirms that it is not aware of any new information or data that materially affects the information included in the original market announcement.

The information in this release that relates to Exploration Results is based on information compiled by Mr Mike Brown who is a Member of the Australian Institute of Geoscientists (MAIG). Mr Brown is the MD and CEO of EVR. Mr Brown has sufficient experience which is relevant to the style of mineralisation and type of deposit under consideration and to the activity which he is undertaking to qualify as a Competent Person as defined in the 2012 Edition of the "Australasian Code for Reporting of Exploration Results, Mineral Resources and Ore Reserves". Mr Brown consents to the inclusion in this announcement of the matters based on information in the form and context in which it appears.

**100%**  
Ownership

### NEVADA ANTIMONY PROJECTS: DOLLAR & MILTON

Formation of a strategic antimony portfolio in **Nevada**, acquiring **100% ownership of the past producing Dollar & Milton Projects.**

**70%**  
Ownership

### LOS LIRIOS ANTIMONY PROJECT

**Los Lirios** is uniquely positioned to become a potential world class, **high-grade, low-impurity source of antimony** for US & global markets.



### Milton Project

Nevada, USA

### Dollar Project

Nevada, USA

### Tecomatlan Plant

Puebla, Mexico

### Los Lirios Project

Oaxaca, Mexico

### TECOMATLAN PROCESSING PLANT

**EVR** has secured a **150-tonne-per-day (TPD) processing plant** targeting strategic, near-term production with increased scalable potential and nearby ore sourcing.

## NEAR TERM CASH FLOW OPPORTUNITIES



### Tecomatlán Plant

- ⚡ Plant offers hub and spoke model for local and regional artisanal miners.
- ⚡ Low CAPEX and simple gravitational processing (Phase 1).
- ⚡ Scalable flotation/leaching circuit adds further upside (Phase 2).
- ⚡ Active mechanical and electrical refurbishment underway; dry commissioning of grinding circuit imminent.
- ⚡ Potential cash flow as early as 2H CY26.
- ⚡ Ramp up operations - Pilot Plant for Los Lirios.

## MID-LONGER TERM SUPPLY



### Los Lirios Antimony Project

- ⚡ High-grade inc **30.2% Sb** from pit channel sampling<sup>1</sup>
- ⚡ Scale potential from >6 km structural corridor, with parallel trends.
- ⚡ CRD style, globally the largest source of antimony production.
- ⚡ Simple metallurgy showing **90.8% recovery** of Sb<sup>2</sup>
- ⚡ JORC Resource Estimate: targeting Q3 CY2026.



### Nevada Antimony Projects to support US domestic supply initiatives.

- ⚡ **Dollar:** up to **15.05% Sb, 17.8% Cu and >10,000ppm Ag**<sup>5</sup>
- ⚡ **Milton:** up to **9.82% Sb, 24.0% Cu and 434ppm Ag**<sup>6</sup>

## VALUE DRIVERS



**Antimony Production Capability:** Tecomatlán operational by end of 2H2026.



**Positioned as a Western antimony supplier:** Supply dominated by China (60-70%) and Russia (10-20%).



Leveraged to benefit from strategic supply chain security programs and **US govt funding.**

## SUCCESS DRIVERS



**Refreshed management team** Experienced Board with +100 years global mining and project delivery experience and a strong in-country team.



**Institutional backing** from Tribeca + offtake/financing MoUs with Wogen/XCLRI.

Sources: 1. ASX Announcement "High Grade Antimony Samples from Los Lirios" dated 24 February 2026, 2. Exceptional Antimony Recovery Confirmed at Los Lirios" dated 16 Dec 2025. 3. "Acquisition of High-Grade Milton Antimony Project" dated 26 Sep 2025 4. "EVR Acquires 100% of High-Grade Dollar Antimony Project" dated 10 Sep 2025. 5 "High-grade Antimony, Copper and Silver confirmed at Dollar" dated 27 Jan 2026. 6. "High-Grade Critical Metal Results Enhance US Pipeline" dated 28th Jan 2026.



## GROWING DEMAND

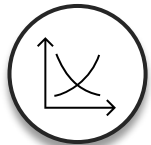
⚡ Forecast to grow significantly (~6.5% CAGR to 2032<sup>1</sup>) due to increased demand from diverse applications including

- ⚡ Military and defence
- ⚡ Flame retardants
- ⚡ Energy storage
- ⚡ Alloys



## SUPPLY CHAIN VULNERABILITY

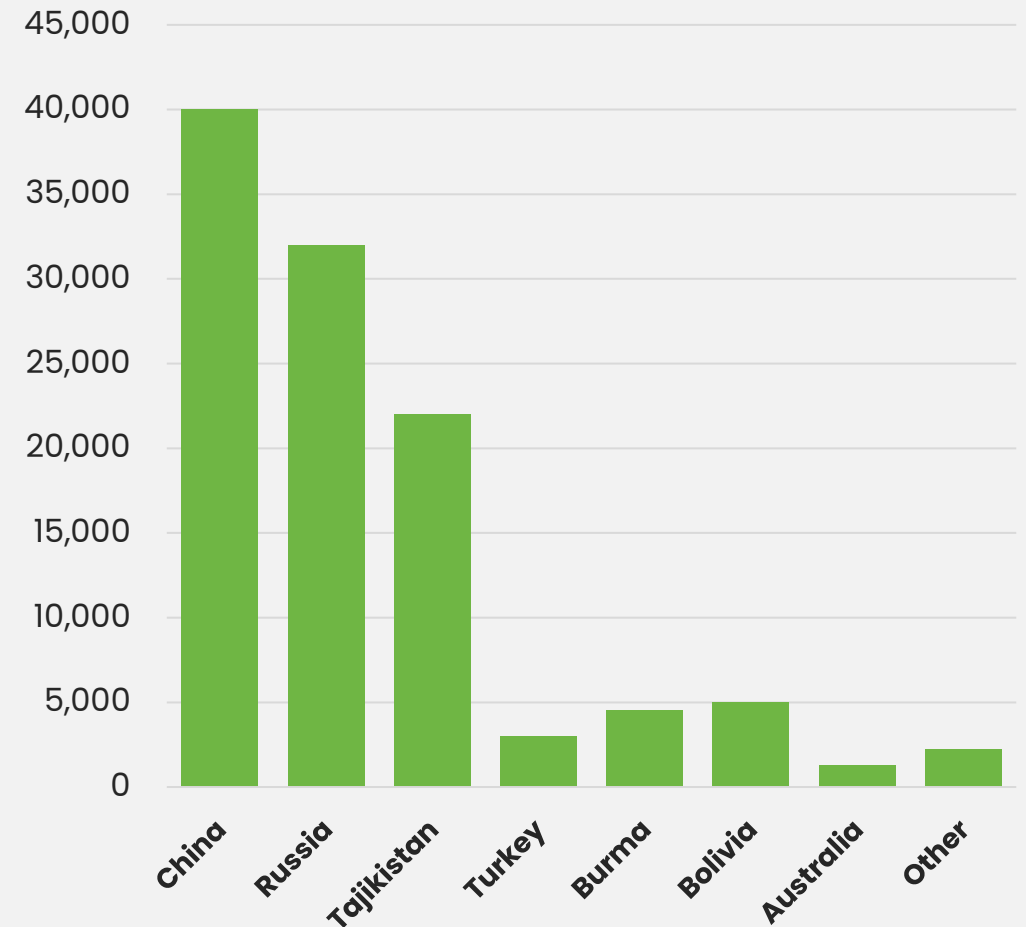
- ⚡ **Global supply highly concentrated** with China controlling 60% production and ~90% refining capacity, presenting significant risk.
- ⚡ Recent actions by dominant suppliers (eg China's export controls) create significant uncertainty/price volatility.



## PRICING IMPLICATIONS

- ⚡ **Finite global reserves**, and few high-grade accessible, deposits.
- ⚡ **Significant supply deficit outlook** and pressure for new, diversified sources.

## GLOBAL ANTIMONY MINE PRODUCTION 2025<sup>2</sup>



The US has a critical, well-funded and non-negotiable need for antimony from reliable, non-adversarial sources, directly aligning with EVR's strategy of developing Antimony assets in allied jurisdictions (Mexico & USA).

## DESIGNATED US CRITICAL MINERAL



**National Security:**  
Critical for defence application (munitions, alloys, night vision) and key infrastructure resilience.



**Economic Security:**  
Essential for advanced tech and manufacturing sectors, incl renewable energy and advanced batteries.



**Dependence Risk:**  
US is 99% reliant on foreign sources for its primary antimony supply, posing strategic vulnerability.

## US GOVT DOMESTIC/ALLIED SUPPLY INITIATIVES



**Defence Protection Act (DPA):**  
US\$1B of funding and support for projects that strengthen domestic supply chains.



**OBBB Act:**  
+US\$7.5B to strengthen US supply chains and replenish DoD stockpiles from domestic/allied sources.



**Infrastructure Investment & Jobs Act:**  
+US\$6.4B to advance critical minerals processing, batteries and recycling.



**US-AUS Framework:**  
+US\$3B joint pledge to invest in a pipeline of critical minerals projects in both countries.

## EVR: THE SOLUTION



**Secure Dual Supply:**  
Stable, 'allied-friendly' source of near-shore (Mexico) and domestic (Nevada) supply.



**Fast-Track:**  
Tecomatlán provides viable near-term production opportunity.



**Grade is King:**  
Los Lirios offers high-grade low impurity stibnite supply potential.



**US Hub:**  
Nevada projects strategically close to the Hawthorne Stockpile and DoW.



**TECOMATLÁN**

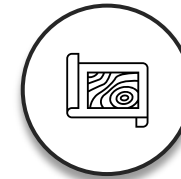


The acquisition of the Tecamatlán Plant firmly positions EVR as a first mover in North American antimony supply, underpinning its strategy to fast-track development and production of this critical mineral.



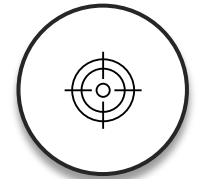
**150tpd**

Initial nameplate capacity with scalable, upgrade potential.



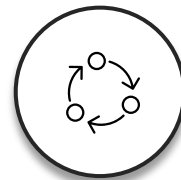
**US\$1.8M<sup>1</sup>**

Lease with purchase option incl staged, milestone-based payments.



**2H CY2026**

Expected commissioning date. Targeting regional ore feedstock for **near-term cash flow**.



**PHASE 1**

Simple low-CAPEX, gravity circuit (**90.8% Sb recovery<sup>2</sup>**).



**PHASE 2**

Flotation/Leaching circuit for sulphide ore (**99.2% recovery<sup>2</sup>**).



**50km**

Only **50 km from Los Lirios** with grid power 100m from site.

Installation design complete, including equipment and contracting costings

## PHASE 1

### TWO-STAGE GRAVITATIONAL PROCESSING

#### CONSTRUCTION ACTIVITIES

- ⚡ Modernise crushing and grinding circuits.
- ⚡ Commissioning of existing ball mills.
- ⚡ Installation of 2 gravity concentrators, tailings thickener and filter press.
- ⚡ Grid connection (100m from site) for power options, with existing diesel back-up.

#### MINOR PERMITTING REQUIREMENTS

- ⚡ Secure Change of Soil use (Owner).
- ⚡ Prepare Informe Preventivo for Refurbishment of Tecamatlán plant.

#### METALLURGY

- ⚡ Simple gravity concentrators (**90.8% Sb recovery<sup>2</sup>**).
- ⚡ Collect sample ore from artisanal miners for gravitational testing.

## PHASE 2

### FLOATATION/LEACHING PROCESSING

#### METALLURGY

- ⚡ Optimal processing for sulphide ore.
- ⚡ Initial recovery of **99.2% Sb** from high-grade Sb sample (**31.2% Sb**)<sup>2</sup>.
- ⚡ Subject to met testing from drill core
- ⚡ Collect representative sample core from mineralisation to establish optimal processing path.

#### DESIGN & ENGINEERING

- ⚡ Subject to met testing from drill core.

#### PERMITTING

- ⚡ Baselines commenced, EIA to be finalised when design completed.

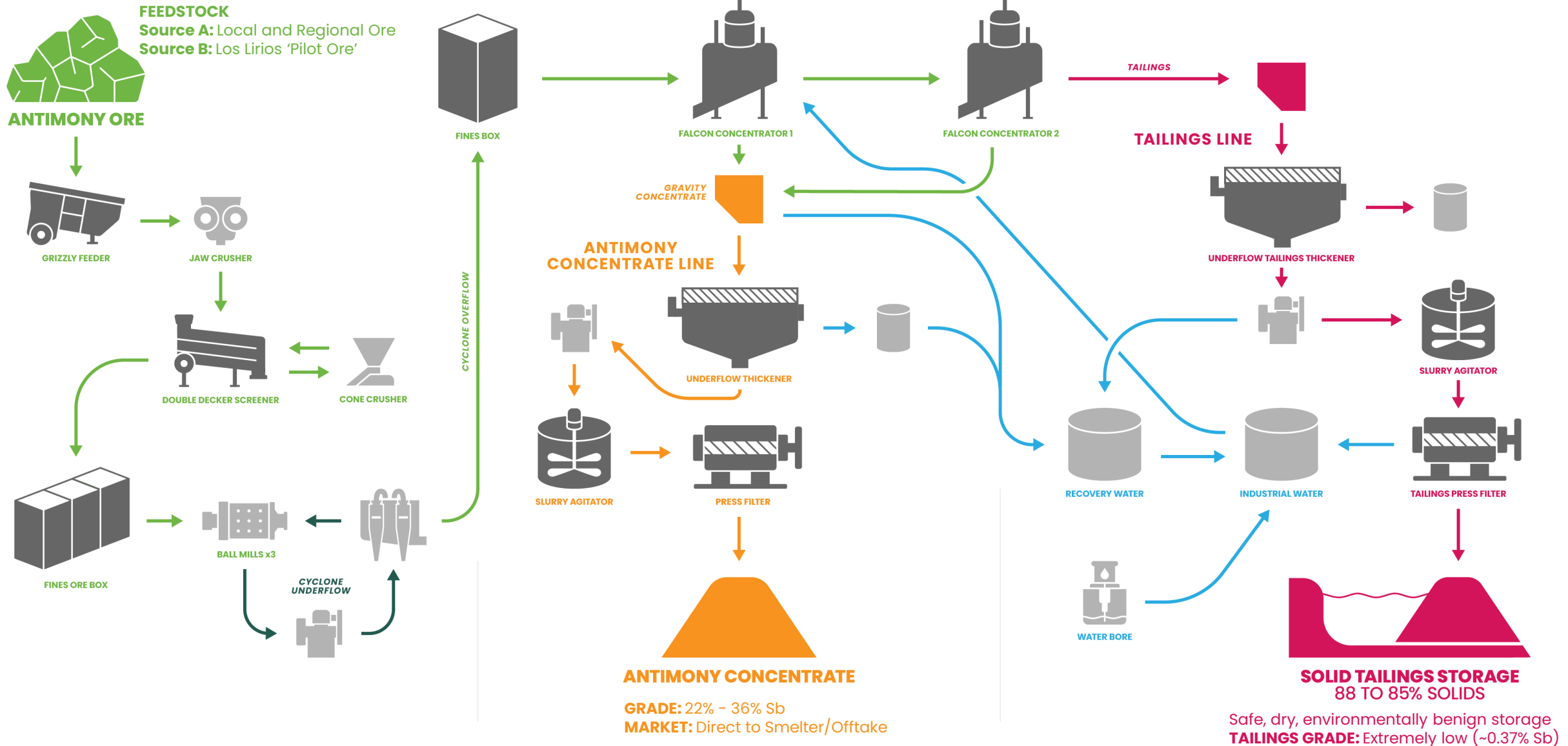


Crushing Circuit



Existing Ball Mills

# TECOMATLÁN PROCESSING PLANT GRAVITY CIRCUIT FLOWSHEET





LOS LIRIOS



# LOS LIRIOS ANTIMONY PROJECT

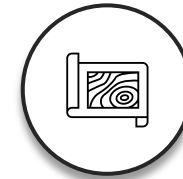
LARGE-SCALE, HIGH-GRADE ASSET WITH HISTORIC PRODUCTION

evresources



**70%**

EVR share of historically producing antimony mine.



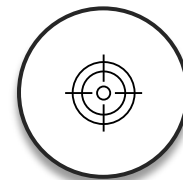
**1,552ha**

Extensive, underexplored and open CRD system confirmed.



**>6km**

Structural corridor, parallel trends, historical antimony workings.



**30.2% Sb<sup>1</sup>**

High-grade channel samples, proven **90.8% recovery<sup>2</sup>**



**JORC Q3**

Maiden drilling results imminent & maiden JORC MRE targeted Q3 CY26.



**USD\$3M**

Strategic offtake + funding (≥US\$3M) partnership with Wogen.

**High-grade mineralisation** hosted in a geologically significant structural setting



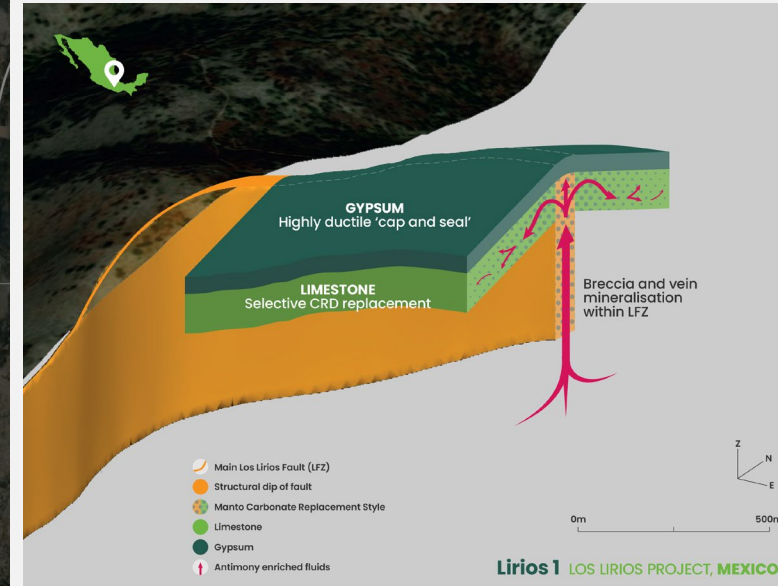
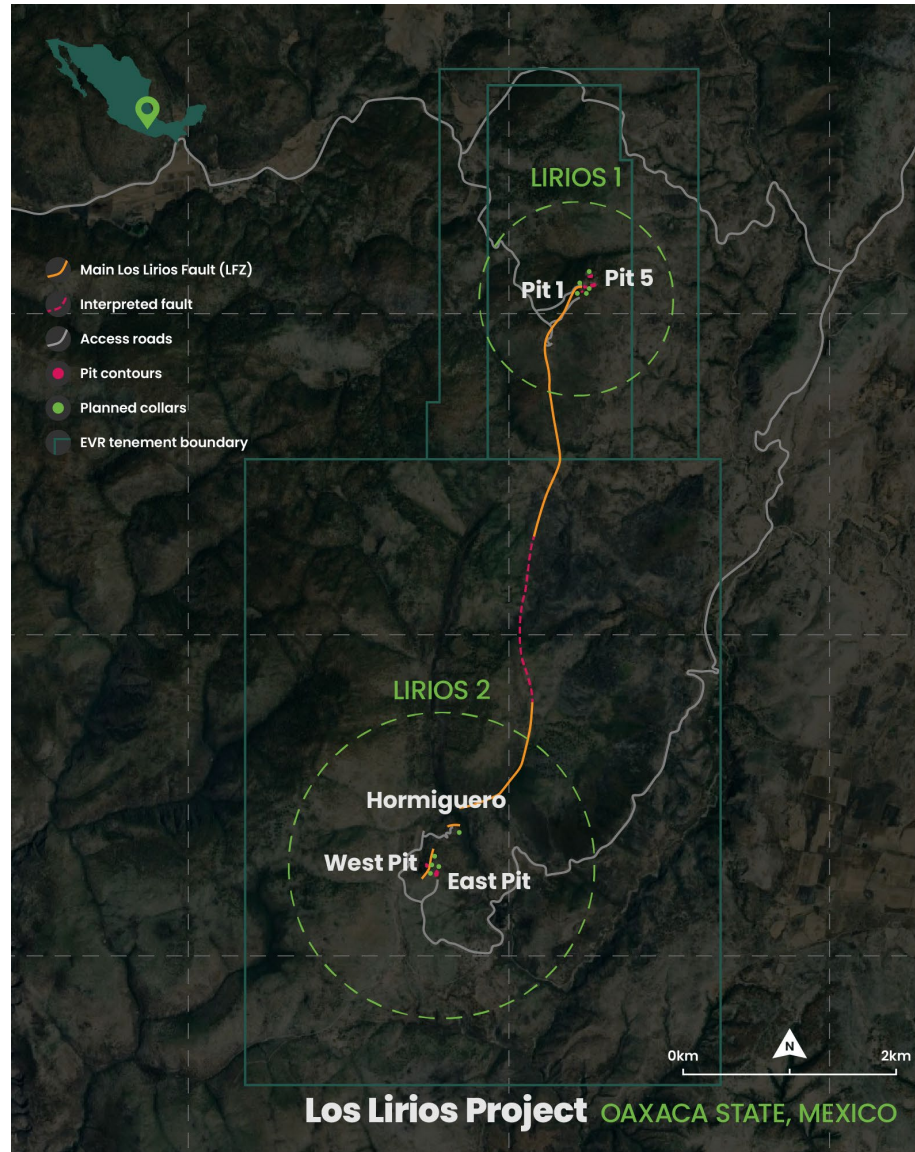
Located in northern Mixteca Terrane, Oaxaca – complex region **known for its metal endowment.**



**Structurally controlled hydrothermal system** with antimony occurring as sulphides stibnite and cervantite (oxide).









**>6km Lirios Fault Zone (LFZ) acts as principal fluid conduit.** Ductile gypsum layers acted as barrier/cap, forcing fluids laterally to replace a gently folded, shallow silicified **CRD unit 2-5m thick**<sup>1</sup>.



### Three styles of target mineralisation identified

1. Shallow, extensive, high-tonnage **CRD.**
2. Vertical high-grade feeders (**LFZ**).
3. Hydrothermal breccias (**Hormiguero**).

**Los Lirios ore delivers exceptional processing characteristics.** Gravity and flotation testing demonstrate industry-leading antimony recoveries, underpinning low-CAPEX, fast-to-production economics.

-  Preliminary metallurgical test work confirms excellent total antimony recoveries
-  **Sb recovery of 90.8%** via simple two-stage gravity concentration. Excellent separation efficiency with low tailing grade of **0.37% Sb**
-  **Commercial grade concentrate of 22%–36% Sb** produced
-  Results support **simple, gravity-only low-cost (both CAPEX and OPEX)** production pathway
-  Utilising a **reagent-free process that simplifies permitting**, providing a fast path option to operation
-  Separate **high-grade sulphide sample returned 99.2% recovery** via flotation, producing a ~50.7% Sb concentrate

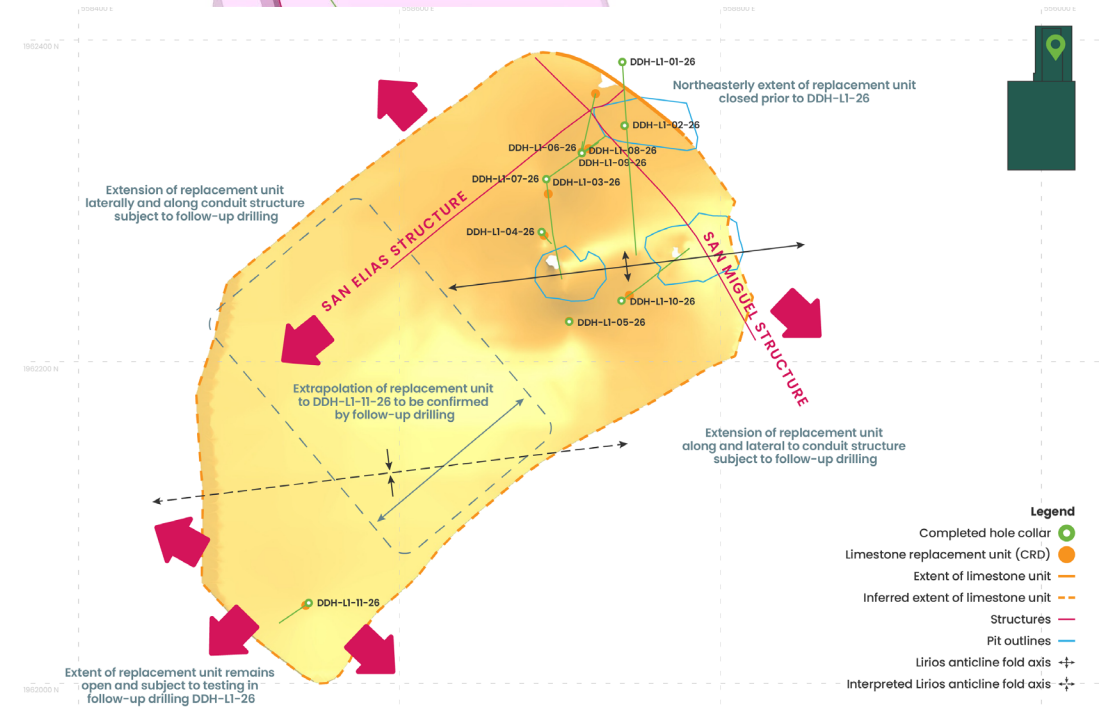
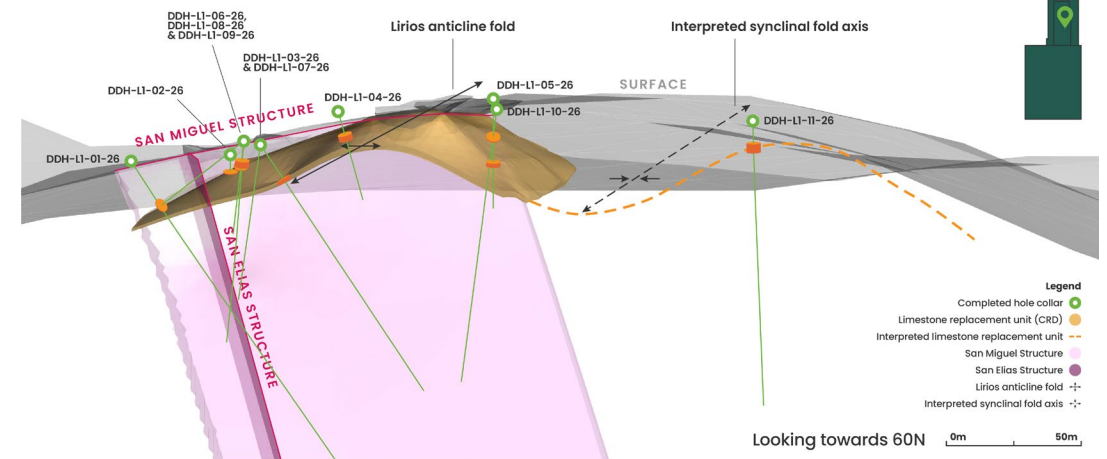
## GRAVITY-ONLY PROCESSING OUTPERFORMED

Parameter	Route B <i>Gravity Only</i>	Route A <i>Flotation + Gravity</i>
Total Sb Recovery	90.8%	85.3%
Concentrate Grade	22% – 36% Sb	Various
Tailings Grade	0.37% Sb	1.2% Sb
Reagent Use	None	High

### Large-scale, shallow carbonate replacement (CRD) antimony system confirmed — one of the world's most significant deposit styles for antimony.

Key results from 11-hole Phase 1 program:

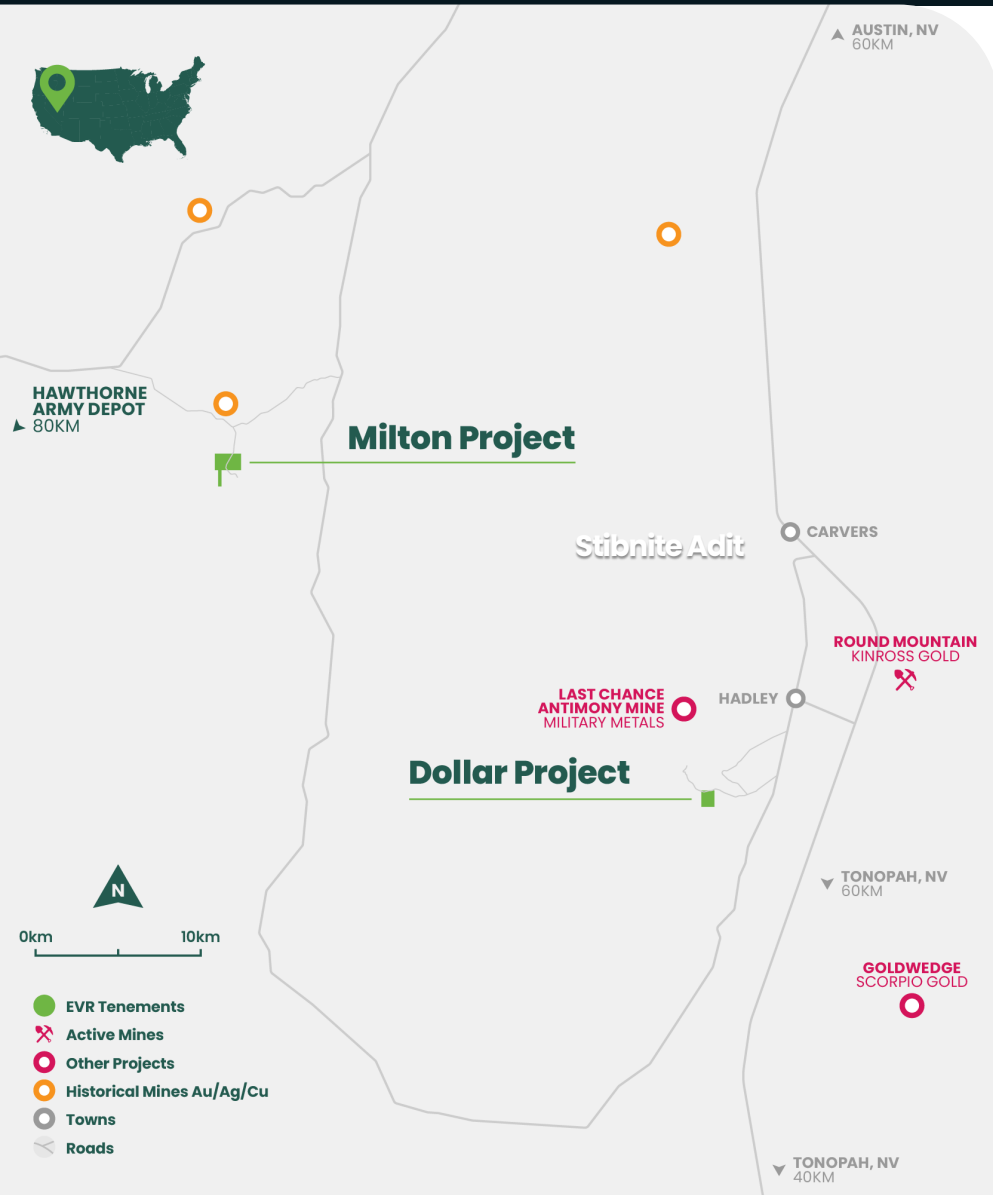
- ⚡ 10 of 11 drill holes intersected a **laterally extensive CRD style limestone unit** at Lirios 1
- ⚡ Consistent unit thickness of ~1–2.25m supports continuity and scale potential
- ⚡ **400m+ strike defined** — system open in multiple directions; step-out hole 200m SW confirms lateral continuity
- ⚡ Shallow, sub-horizontal and gently folded system defined in 3D modelling, **open in multiple directions**
- ⚡ **Assay results pending.** Clear pathway to potential Exploration Target and maiden JORC MRE, targeted Q3 CY2026





**NEVADA ANTIMONY PROJECTS**





### DOLLAR ANTIMONY PROJECT



#### HIGH-GRADE POLYMETALLIC POTENTIAL

Historical assays  $\geq 40.63\%$  Sb<sup>1</sup>; modern in-situ sampling confirmed  $\geq 15.05\%$  Sb,  $17.8\%$  Cu,  $>10,000\text{ppm}$  Ag and  $3.88\text{ g/t Au}^2$



#### STRATEGIC LOCATION

8 claims, 160ac, in the Jett Mining District, ~100km from US Hawthorne Military storage facility.



#### KEY STRUCTURAL SETTING

Toiyabe Range east slope at highly prospective contacts of Tertiary volcanics and Paleozoic sediments.



#### EXISTING ACCESS IN PLACE

Development includes three adits (>400 ft total) and 30ft inclined shaft.

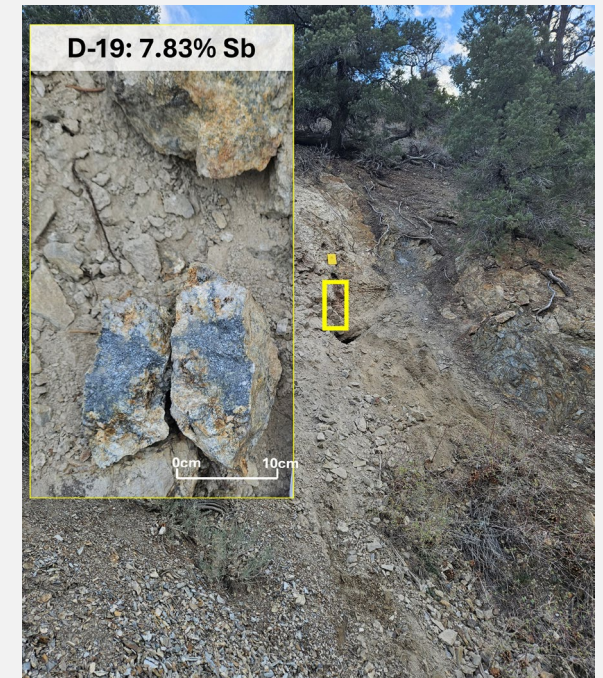


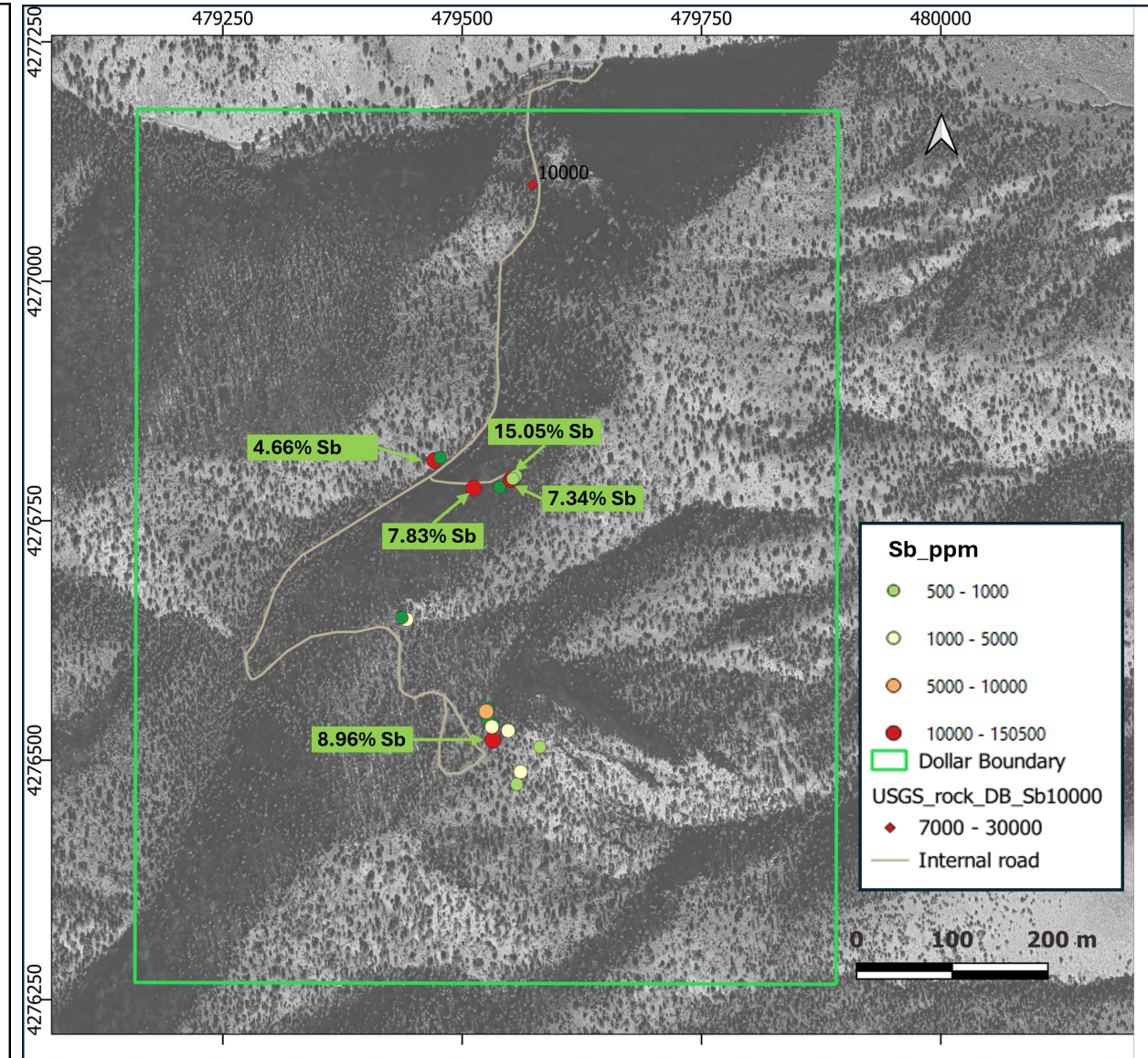
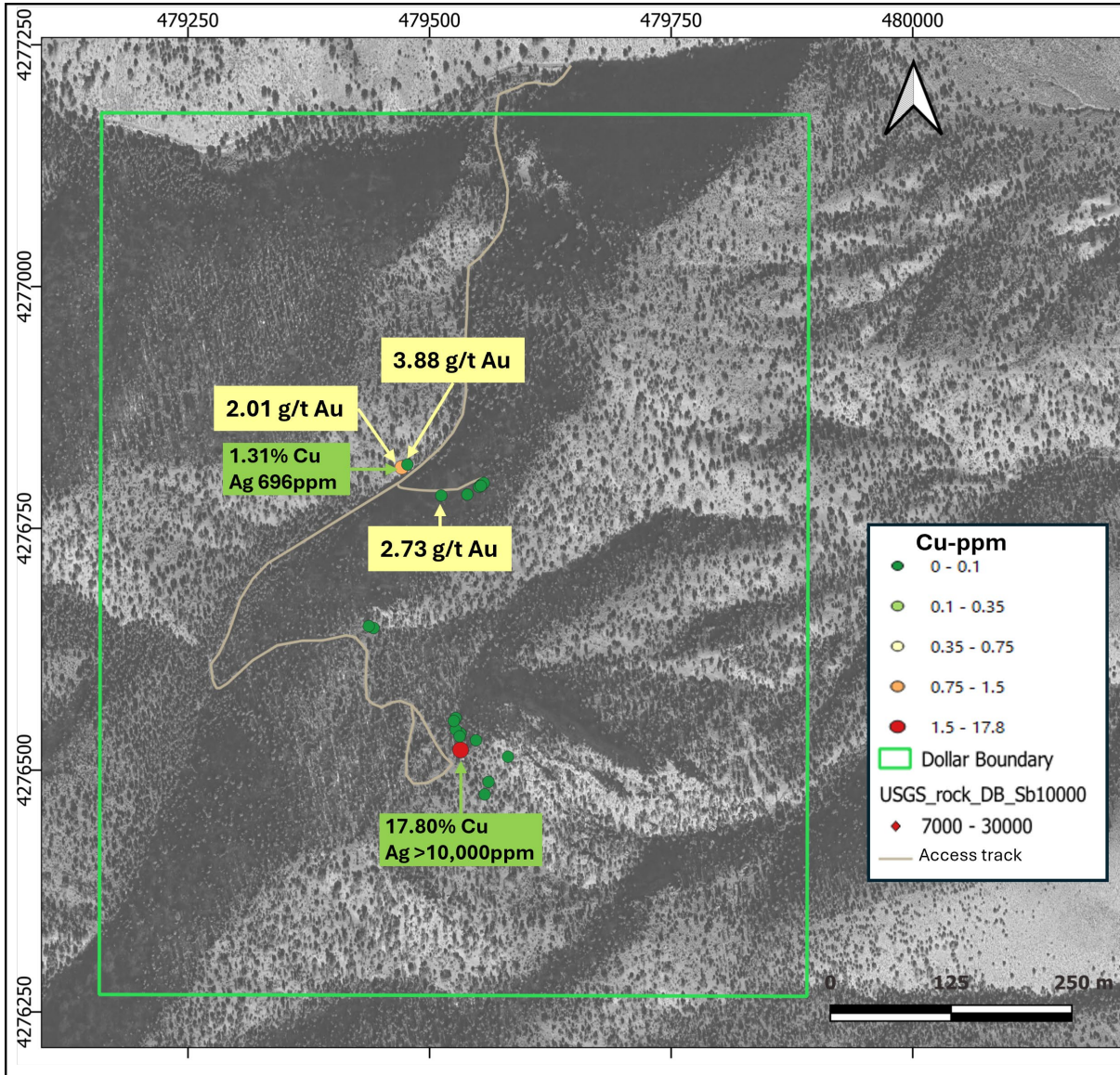
#### TARGETING WWII WORKINGS

Two trends followed by historical adits with quartz-Sb vein observed in roof, offers highly prospective initial target.

### UPCOMING EXPLORATION

- Systematic soil geochemistry program **COMPLETED (April 2026)**
- Assay results expected late May/June 2026.
- Planned geophysical survey (CSAMT & others).
- Drill targets being defined for maiden Nevada drill campaign.





## MILTON ANTIMONY PROJECT

### HISTORICAL PRODUCTION

**30 tons at avg 40% Sb.** Historical assays up to **20.77% Sb** from stockpiles and **12% Sb** in workings<sup>1</sup>.

### POTENTIAL ANTIMONY HUB

~80km from DoD Critical Minerals Storage and Army Depot on the Shoshone Range Western Flank.

### FAVOURABLE GEOLOGICAL SETTING

Structurally controlled stibnite oxide mineralisation within Triassic Limestone, assoc Ag/Au credits.

### HIGH-GRADE MINERALISATION

Sampling of Historic workings returned up to **9.82% Sb, 24.0% Cu** and **434ppm Ag<sup>2</sup>**

### EXISTING INFRASTRUCTURE

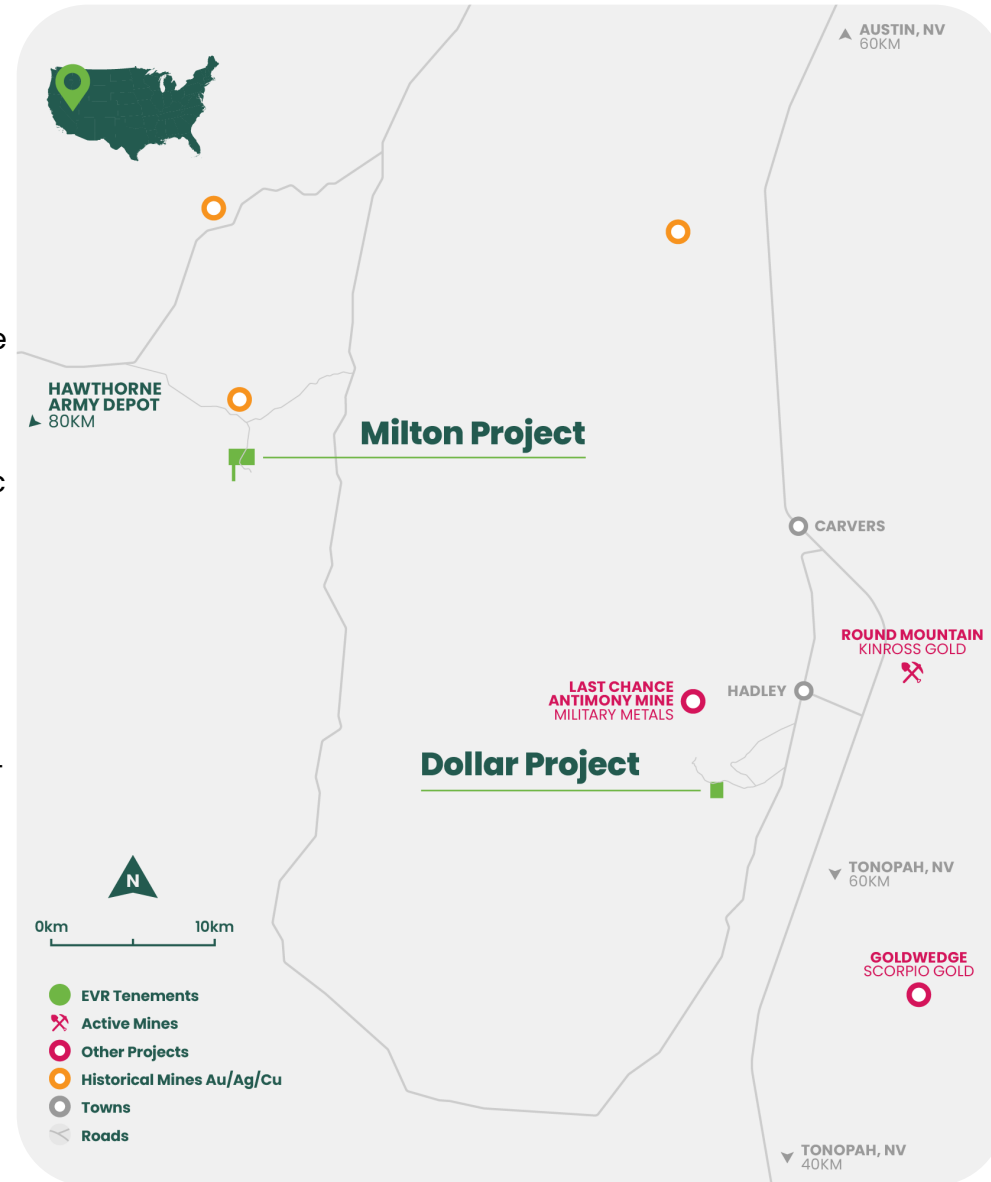
Road accessible, close to Nevada State Route 376, within mining-friendly jurisdiction.

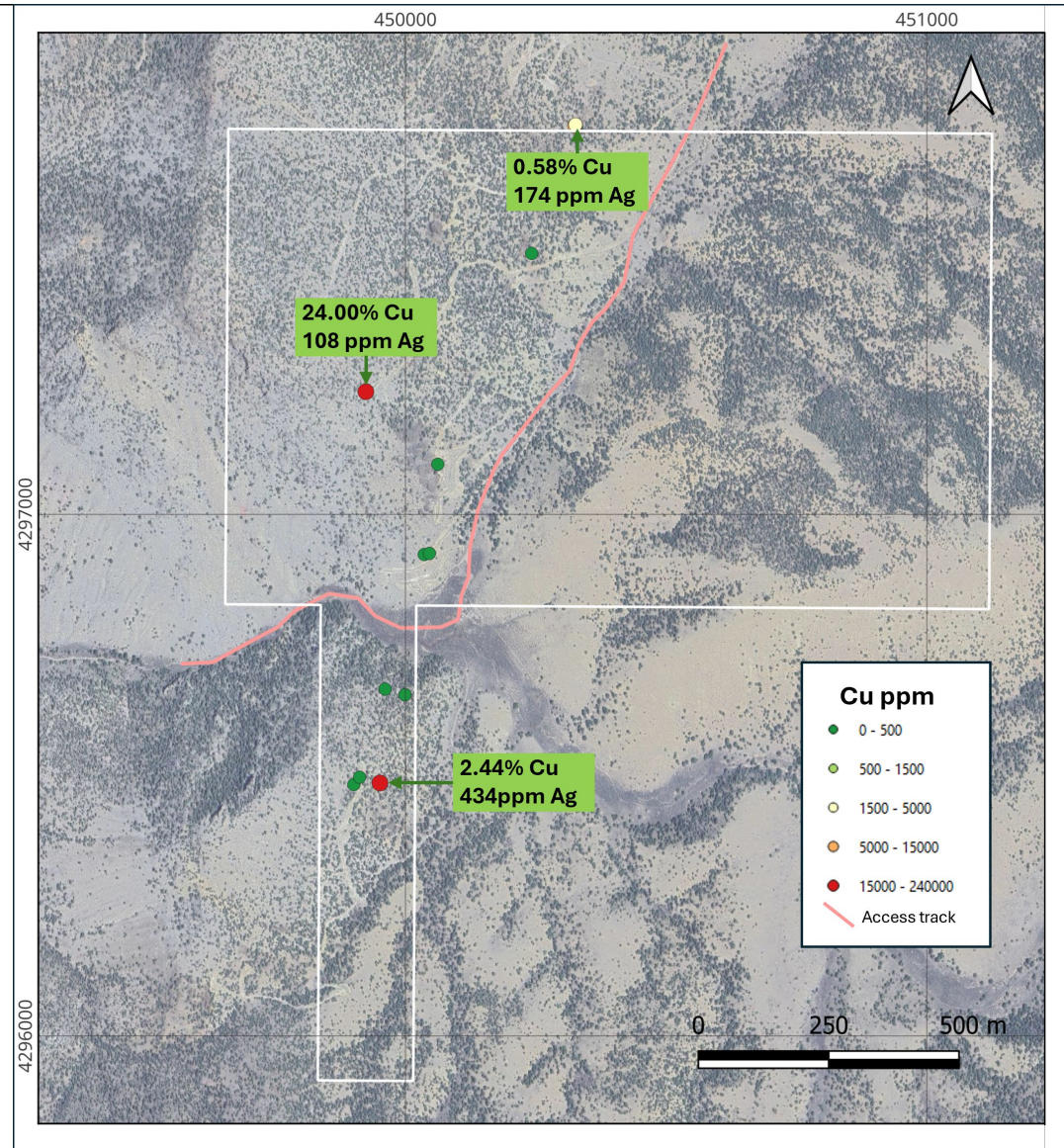
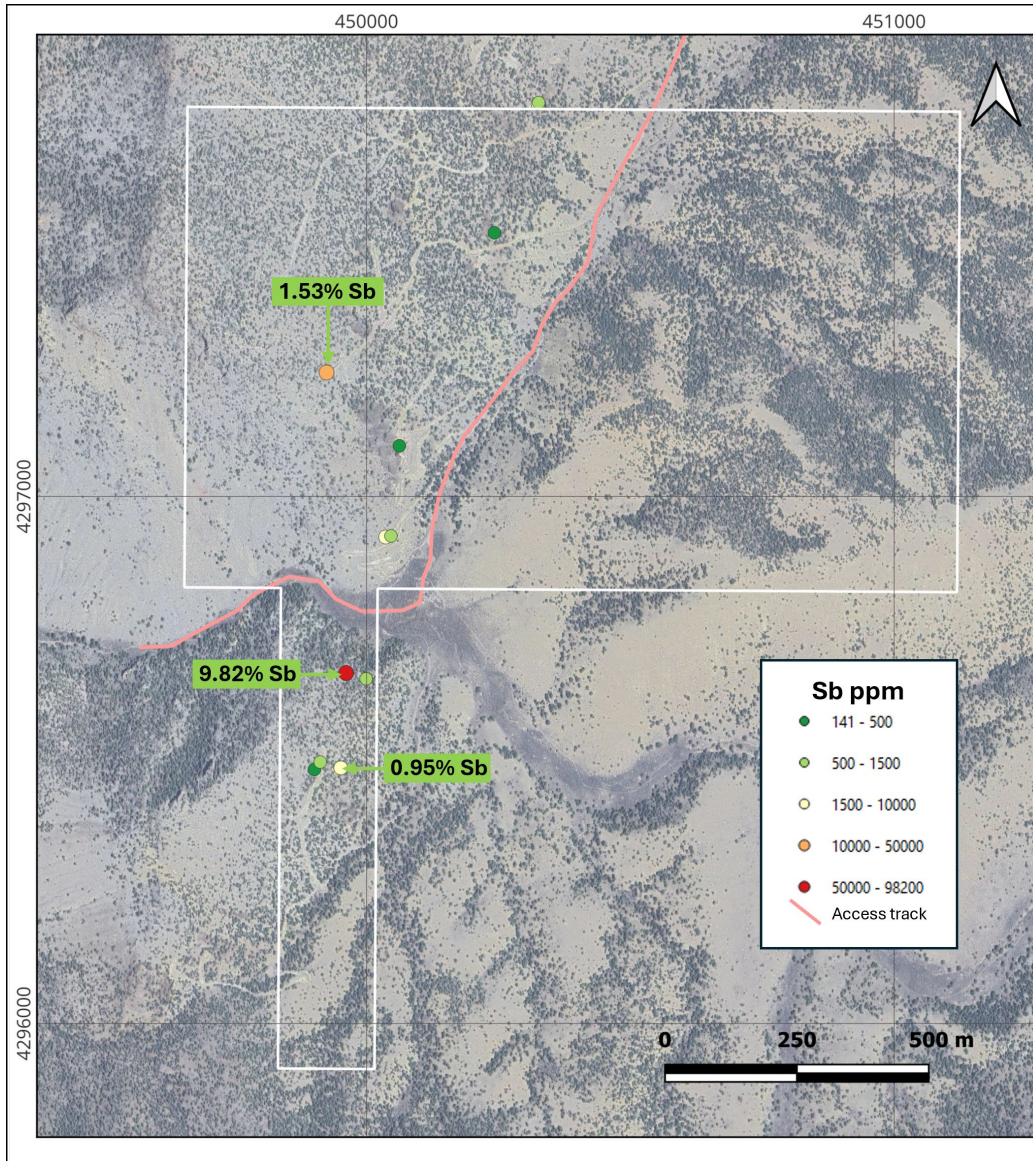
### HISTORICAL WWII PRODUCTION

Evidence of 3-4 historical mining phases (shafts, adits and open pits). Stibnite and copper oxides present point

### 2026 EXPLORATION UPDATE

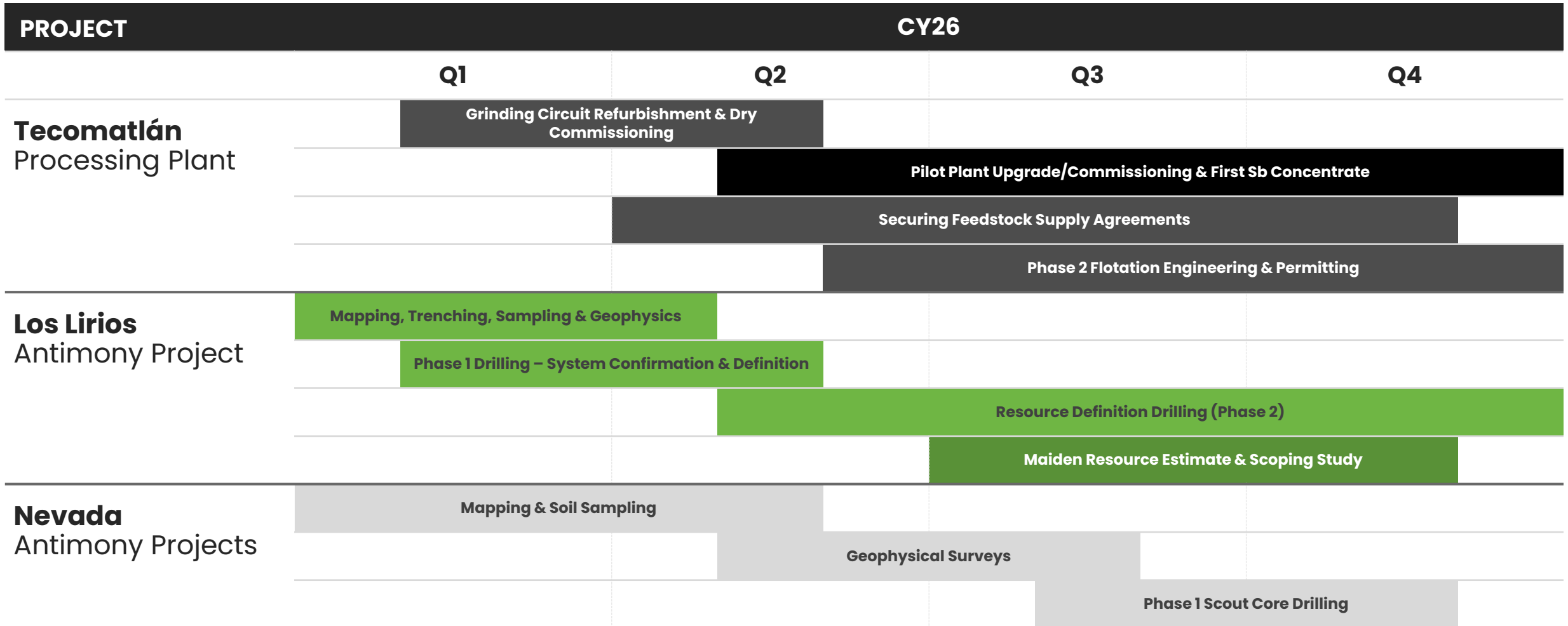
Systematic soil geochemistry program **COMPLETED (April 2026)**  
Results expected late May/early June 2026 to inform drill targeting for maiden campaign.







## WORK PROGRAMS AND NEWS FLOW CATALYSTS



**CORPORATE OVERVIEW**





**SHARES ON ISSUE**  
3.04B



**OPTIONS & PERFORMANCE RIGHTS**  
1.30B



**SHARE PRICE AT 30 APR 2026**  
0.9c



**MARKET CAP AT 30 APR 2026**  
\$27.36M



**52 WEEK HIGH**      **52 WEEK LOW**  
1.6c                      0.4c



**CASH POSITION AT 31 MAR 2026**  
\$1.87M

## BOARD & MANAGEMENT

100+ YEARS COMBINED EXPERIENCE

### SHANE MENERE

Non-Executive  
Chairman

- 25+ yrs mining executive & entrepreneur; experience across ASX gold & exploration companies.

### TIM YOUNG

Non-Executive  
Director

- 25+ yrs global financial markets; Asia and Aus; capital markets & investor relations.

### MIKE BROWN

Managing Director  
& CEO

- 30+ yrs international mining & energy; MAIG geoscientist & Competent Person; +61 8 6489 0600.

### LUKE MARTINO

Non-Executive  
Director

- 25+ yrs Deloitte partner level; Director, Indian Ocean Corporate; financial/audit background.

### JUSTIN WERNER

Non-Executive  
Director

- MD of Nickel Industries (ASX:NIC, A\$3B mkt cap); co-founder Alpha HPA; strategic mining executive.

## STRATEGIC PARTNERSHIPS

**Wogen / XCLR<sup>1</sup>**  
Offtake + USD\$3M Financing MoU

**Tribeca**  
4.11% holding  
Institutional Equity

**APPENDIX**





## LOS LIRIOS ANTIMONY PROJECT

COMMODITY FOCUS  
**Antimony**

LOCATION  
**Mexico** Oaxaca  
State, Zapotitlan  
Lagunas

EVR OWNERSHIP



## TECOMÁTLAN PROCESSING PLANT

COMMODITY FOCUS  
**Antimony**

LOCATION  
**Mexico** Puebla  
State, 50km from  
Los Lirios

EVR LEASE WITH  
OPTION TO PURCHASE  
100%



## DOLLAR ANTIMONY PROJECT

COMMODITY FOCUS  
**Antimony**

LOCATION  
**USA**  
Nye County,  
Nevada

EVR OWNERSHIP



## MILTON ANTIMONY PROJECT

COMMODITY FOCUS  
**Antimony**

LOCATION  
**USA**  
Nye County,  
Nevada

EVR OWNERSHIP



## DON ENRIQUE COPPER PROJECT

COMMODITY FOCUS  
**Cu-Au-Ag**

LOCATION  
**Peru**  
Jauja,  
Central Peru

EVR OWNERSHIP



## ESTRELLA COPPER PROJECT

COMMODITY FOCUS  
**Cu-Au-Ag**

LOCATION  
**Peru**  
Jauja,  
Central Peru

EVR OWNERSHIP





# evresources

## CONTACT



**Mike Brown**  
**Managing Director and CEO**  
Tel: +61 8 6489 0600  
E: [info@evresources.com.au](mailto:info@evresources.com.au)