



## Central Lime Project – Construction Update

30 April 2026

Pacific Lime and Cement Limited (ASX: PLA, PNGX: PLC) (**PLC** or the **Company**) is pleased to provide an update on progress at its Central Lime Project (**CLP** or the **Project**) in Papua New Guinea.

During the March 2026 quarter the Project progressed into civil, foundation and structural works. Project execution has been strong, with key infrastructure and critical path activities continuing to advance in line with expectations.

The Project remains aligned with its overall development schedule and approved budget, with commissioning and first production targeted for early 2027.

### Highlights

- **Transition to Structural Phase:** Project progressed from bulk earthworks into civil, foundation and structural works.
- **Kiln Foundations Commenced:** Reinforcement and formwork progressed, with concrete pours scheduled for late April 2026.
- **Crushing Operations Commenced:** On-site crushing and screening is now operational, improving material availability and reducing reliance on imported aggregates.
- **Bridge Infrastructure Advancing:** Bridge 1 abutments progressing following completion of piling; Bridge 2 access completed enabling piling mobilisation.
- **Wharf Development Progressing:** Phase 3 procurement and fabrication commenced, supporting future marine logistics and installation activities.
- **Batch Plant Installation Completed:** Installation complete with commissioning ongoing, supporting the ramp-up of concrete production (noting commissioning extended into April).
- **Camp Near Completion:** Camp Infrastructure substantially complete, supporting workforce expansion and transition to structural phase operations.
- **Workforce Growth:** Workforce increased to 175 personnel as construction activity continues to build momentum.

### Construction Progress Detail

During the March 2026 quarter, construction activity across the Central Lime Project advanced across multiple workstreams as the Project transitioned into civil, foundation and structural works. The Company continues to monitor in the coming quarters the emerging global cost pressures, including supply chain and geopolitical factors but feels contingency sources of capital previously communicated to be more than suffice to cater for any such cost pressures.

The construction of kiln foundations advanced with reinforcement and formwork installed. Concrete foundation pours began in late April. These activities form a key component of the Project's critical path toward installation of the kiln processing infrastructure.

Crushing and screening operations commenced on site, improving the availability of aggregates and reducing the reliance on costly imports.

The new road the Company is building, connecting Pacific Lime and Cement's Special Economic Zone with Port Moresby, will provide a critical logistics link for the Central Lime Project. On the road project Bridge 1 progressed into



abutment construction following the completion of piling activities, while Bridge 2 access works were completed, enabling the mobilisation of piling activities.

The concrete batch plant was installed during the period, with commissioning ongoing as we ramp-up concrete production for the construction of foundations and civil works.

Camp facilities are now substantially complete, with final commissioning progressing as we head towards full occupancy as workforce levels increase in line with construction activity.

The development of Phase 3 of the wharf continues to advance, with fabrication and procurement activities progressing and shipment arrival preparation underway ahead of marine installation.

As the Project transitions into more complex structural and critical path activities, construction sequencing and productivity are being actively optimised to maintain consistency with the Project's schedule .

Operational readiness planning has commenced with a 150-tonne crane and additional heavy equipment now assembled and commissioned on site. With a workforce of 175 personnel engaged across the Project, **PLC continues to maintain compliance with all regulatory requirements and remains on track to complete commissioning and deliver first lime production in early 2027.**

**PLC Managing Director Paul Mulder commented:** “The Central Lime Project has reached an important inflection point with the transition into structural construction and the commencement of kiln foundation works.”

“Pleasingly, we have also achieved our first external product sales, demonstrating early revenue, port and wharf capability and validating our logistics and supply chain.”

“With critical infrastructure advancing across the site and key construction systems now operational on site, including crushing and concrete production capability, we are continuing to build momentum toward commissioning in early 2027.”

For more information, please click the following link for a short video update from our Project Director - <https://www.youtube.com/watch?v=tpLLO6h0Sk>



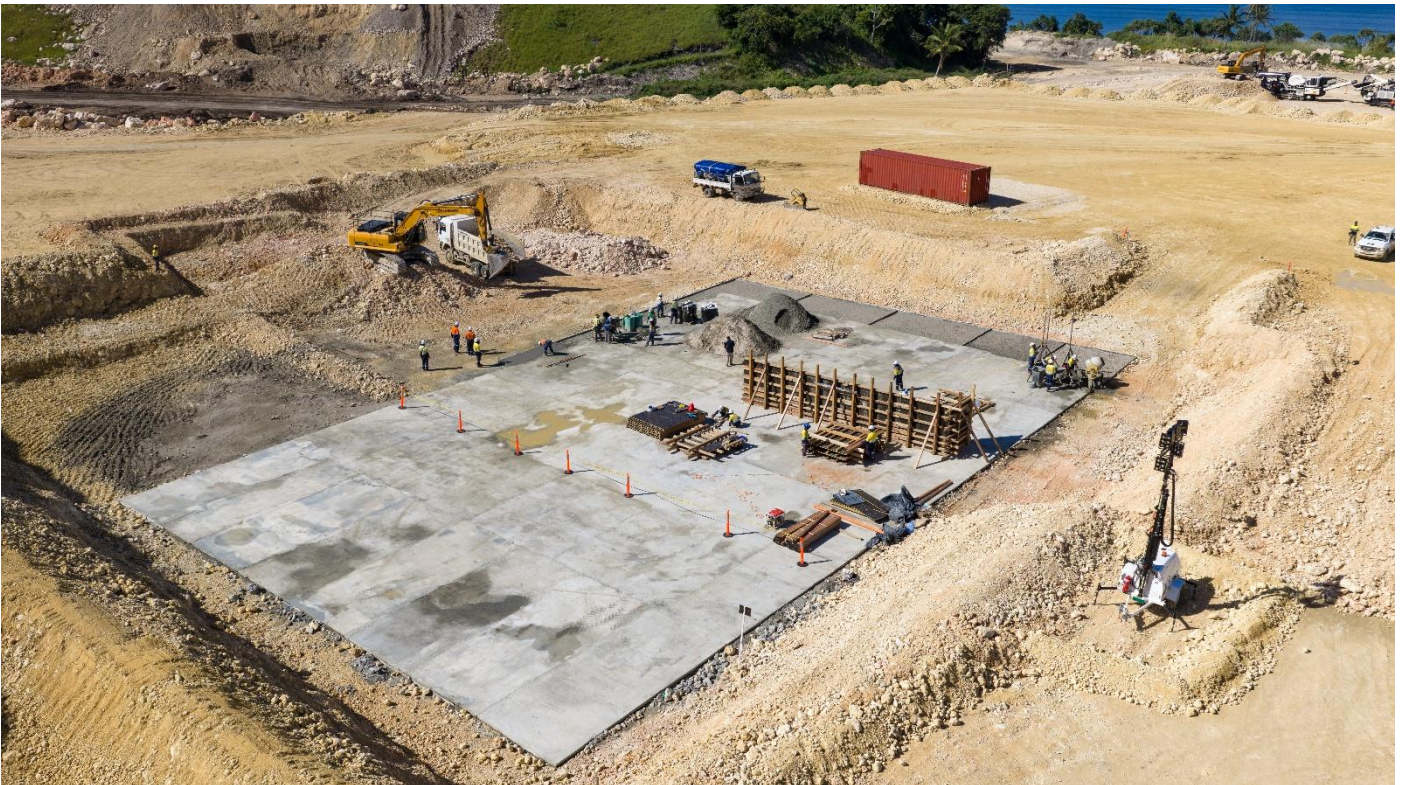
*Image 1: Stage 3 of wharf construction underway.*



**Image 2: Kiln pad areas trimmed and prepared.**



*Image 3: Bridge 1 piling was completed with works progressing into abutment construction.*



*Image 4: Kiln foundation works progressed through excavation with reinforcement and formwork commencing.*



*Image 5: All Terrain crane was fully assembled and commissioned, supporting installation works.*



*Image 6: Camp infrastructure is now positioned to support the transition into structural phase operations.*



*Image 7: Silos and other equipment in operation.*



*Image 8: Crushers have arrived on site.*



*Image 9: Workforce numbers are increasing in line with construction progression.*

ENDS

This announcement has been authorised for release by the Board of Directors of Pacific Lime and Cement Limited.

**For more information:**

**Paul Mulder**  
Managing Director  
p: +61 (0)7 3157 4400  
e: info@placltd.com

**Reign Advisory**  
p: +61 2 9174 5388  
e: PLA@reignadvisory.com

**Investors and Media:**

**Paul Ryan**  
Sodali & Co.  
m: +61 409 296 511  
e: paul.ryan@sodali.com

A conceptual overview video was recently completed. To view please visit the following link [Conceptual Rendering - Central Cement and Lime Project - Special Economic Zone - PLC](https://www.youtube.com/watch?v=wwRRpzPeEfc)  
(<https://www.youtube.com/watch?v=wwRRpzPeEfc>)

**About Pacific Lime and Cement Limited**

Pacific Lime and Cement Limited (ASX: PLA) is advancing the development of Papua New Guinea's lime and cement industry to supply essential building materials for the nation and the wider Asia-Pacific region. Anchored by its flagship Central Lime and Cement Projects, PLC is creating a fully integrated platform for local manufacturing, import substitution, and sustainable growth. The company's diversified portfolio also extends to industrial sands, nature-based forestry carbon credits, and renewable energy, supporting its commitment to delivering cleaner, long-term solutions that build enduring value for PNG and its communities. PLC also holds an approximately 16.3% interest in copper gold explorer/developer Adyton Resources Corporation, a company listed on the TSX-V (TSXV: ADY).



PLC's strategy is to support Papua New Guinea and the broader Asia Pacific region on their decarbonisation journey by developing projects that deliver higher-quality, lower-cost, and targeted 'low-carbon' inputs for the mining, resources, and construction sectors. The company will support these projects where applicable with a diversified renewable energy portfolio encompassing solar, wind, geothermal, nature-based forestry carbon credits, and battery storage initiatives.

PLC is committed to engaging with host communities throughout the lifecycle of its projects, as well as incorporating internationally recognised Environmental, Social and Governance (ESG) standards into its strategy and business practices.