

# ASX Announcement

30 April 2026



## Quarterly Activities Report: March 2026 Quarter

Western Ridge Resources Limited (ASX:WRX) (“Western Ridge” or the “Company”) is pleased to provide a report and overview of the activities taking place in the period ending 31 March 2026 (the “quarter”).

### Highlights

- Completed low-altitude drone aeromagnetic survey at the Keystone Project (Nevada, USA), defining multiple shallow, drill-ready targets
- Geophysical anomalies show correlation with historic workings, validating priority target areas and identifying 10+ additional targets
- Approved 19-hole (~1,380m) RC drilling program following BLM Notice of Intent approval, targeting extensions of mineralisation at Keystone Mine (~36koz historical silver production)
- Maiden drilling scheduled to commence in the June 2026 quarter
- Completed corporate rebrand to Western Ridge Resources Limited (ASX: WRX) following shareholder approval
- Completed OTCQB listing in the United States (WRXLF), improving access to U.S. investors with no change to ASX trading or capital structure

### Western Ridge’s Managing Director, Dr Matthew Cobb, commented:

*“This has been a significant quarter for Western Ridge Resources, marked by the successful rebrand of the Company and the commencement of exploration at our flagship Keystone Project in Nevada. The results from the recent aeromagnetic survey clearly defined multiple shallow, drill-ready targets and reinforced our confidence in the broader prospectivity of the project.*

*“Importantly, we have also secured approval for our maiden drilling program at Keystone, which is fully funded and on track to commence in the June 2026 quarter. This program represents a key milestone as we look to test extensions of known mineralisation and unlock the potential of a system that remains largely underexplored.*

*“At a corporate level, our transition to Western Ridge Resources reflects our acquisition of the Keystone Project and refreshed corporate strategy. The completion of our OTCQB listing further strengthens our access to North American capital markets and broadens our investor base, positioning the Company to support ongoing exploration and growth initiatives.*

*“We look forward to an active period ahead as we execute our drilling plans and continue to build momentum at Keystone throughout 2026.”*

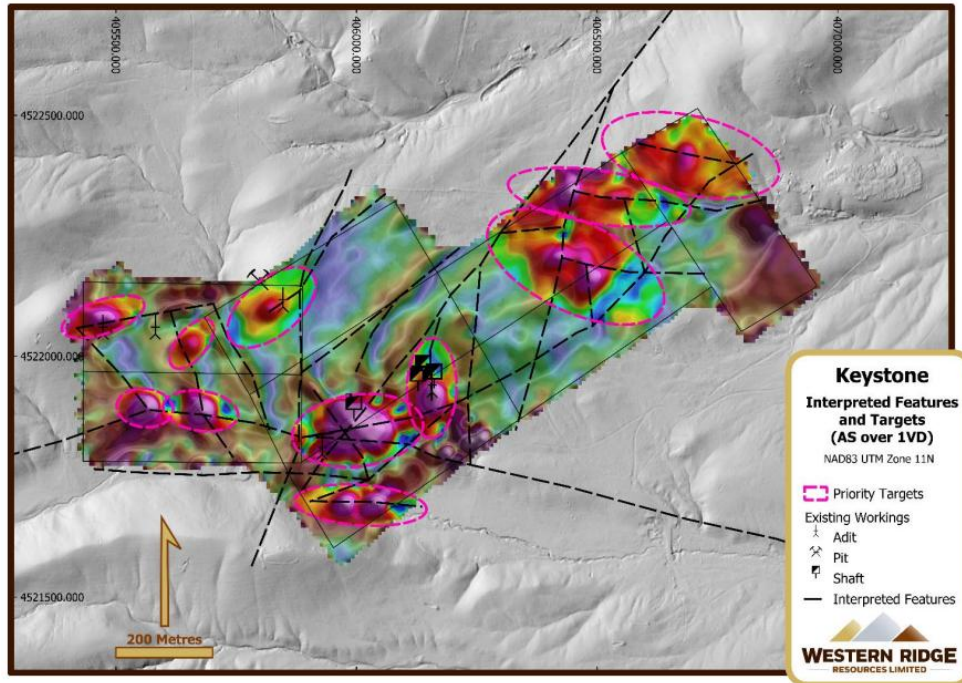
### The Keystone Project (Nevada, USA)

#### Aeromagnetic Survey Defines Multiple Drill Targets

During the quarter, Western Ridge announced the results of a low-altitude drone aeromagnetic survey completed over its 100%-owned Keystone Project in Nevada.

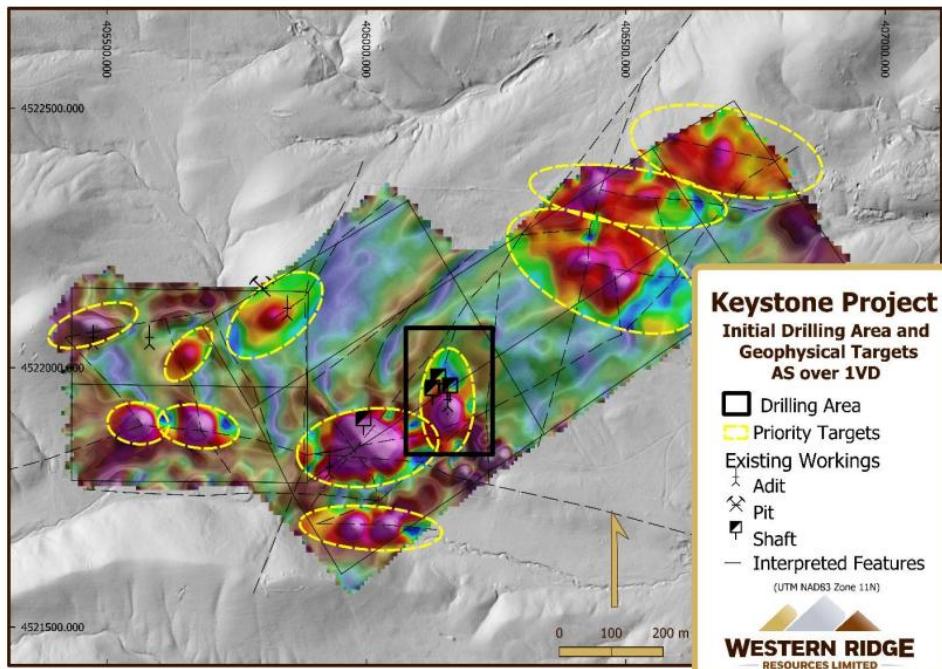
The survey was designed to identify prospective structures and intrusive contacts considered favourable for vein-hosted silver, lead, zinc and gold mineralisation. Interpretation of the data successfully defined multiple shallow, “ready-to-drill” targets across the project area.

Importantly, several identified anomalies spatially coincide with historic mine workings at both the Keystone Mine and Marble Rock. This correlation provides strong validation of the geophysical targets and highlights the broader prospectivity of the project for additional mineralisation discoveries.



**Figure 1:** Structural Feature Interpretation and Priority Targets; Keystone Prospect

The survey has also identified at least 10 additional priority target areas, many of which are associated with historic workings, supporting the Company’s strategy to build a pipeline of drill-ready targets.



**Figure 2:** Keystone Project additional drill targets

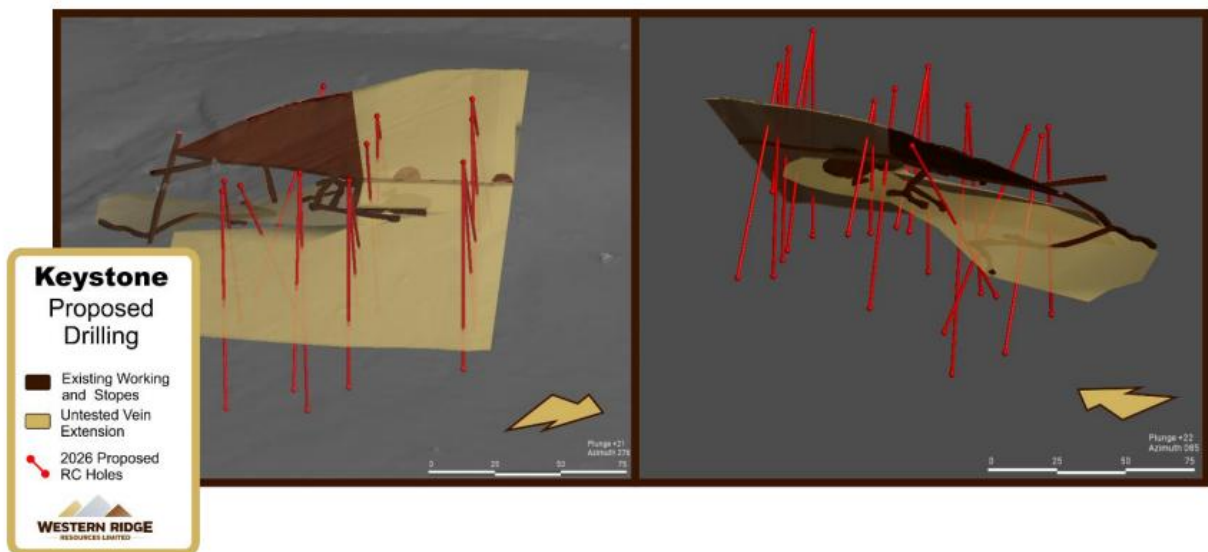
### Fully Funded Drilling Program Approved

Following the encouraging geophysical results, the Company progressed plans for an initial drilling campaign at Keystone. Western Ridge submitted a Notice of Intent (NOI) to the Bureau of Land Management (BLM), which has subsequently approved a 19-hole reverse circulation (RC) drilling program for approximately 1,380 metres. The Company expects to commence drilling activities in the June 2026 quarter.

The program is designed to test the strike and depth extensions of the vein system at the historic Keystone Mine, which produced approximately 36,000 ounces of silver between 1937 and 1943.

The planned drilling will target the main Keystone vein, identified at surface and responsible for the original discovery and sub-horizontal vein systems discovered during later stages of historical mining. Historical production at Keystone ceased due to the United States' involvement in World War II, rather than depletion of mineralisation, reinforcing the exploration potential of the system.

Following completion of the initial drilling program, Western Ridge intends to systematically test additional high-priority targets identified from the recent aeromagnetic survey. The Company aims to advance multiple targets across the Keystone Project throughout the 2026 field season, building a strong pipeline of exploration opportunities.



**Figure 3:** Keystone Mine, showing proposed 19-hole RC drilling campaign

### Equador Niobium Project (Brazil)

No exploration activities were undertaken at the Company's Equador and other Brazilian Projects during the quarter.

## Corporate

### Corporate Rebrand

Following shareholder approval, the Company formally rebranded from Summit Minerals Limited to Western Ridge Resources Limited. Trading under the new ASX ticker code WRX (formerly SUM) commenced on 4 March 2026.

The rebrand reflects the Company's strategic transformation following the acquisition of the Keystone Project, a polymetallic asset prospective for high-grade silver, gold and tungsten mineralisation. Under new leadership, Western Ridge is focused on advancing Keystone while building long-term value across its broader asset portfolio.

### OTC Listing

Western Ridge Resources completed its admission to the OTCQB market in the United States during the quarter, with trading commencing under the ticker WRXLF on 30 March 2026. The dual listing provides enhanced access to U.S. investors, enabling trading in U.S. dollars during U.S. market hours and supporting improved liquidity.

The OTC listing also strengthens the Company's engagement with U.S. capital markets, aligning with its strategy to advance critical minerals projects in the Americas. No new shares were issued as part of the listing, and trading on the ASX remains unchanged, with consistent disclosure maintained across both markets. The milestone represents a key step in progressing the Company's U.S.-focused growth strategy, including advancement of the Keystone Project.

### Additional ASX Information

ASX Listing Rule 5.3.1 – Mining exploration activities and investment activity expenditure during the quarter was \$874,000, which includes payments for geological consulting services, metallurgical costs, tenement management fees and acquisition cost for the Keystone Project. Detailed information about the activity during the quarter is presented in this report.

ASX Listing Rule 5.3.2 – There were no substantive mining production and development activities for the quarter.

ASX Listing Rule 5.4.5 – Payments to related parties of the Company during the quarter and outlined in the Appendix 5B include \$97,000 for Director Fees, Consulting Fees, and Salaries.

This announcement has been approved by the Board of Directors.

### For more information

#### **Dr. Matthew Cobb**

Managing Director

[info@westernridgeresources.com](mailto:info@westernridgeresources.com)

**E** +61 8 9426 0666

### About Western Ridge Resources Limited

Western Ridge Resources Limited is an Australian-focused ASX-listed critical and precious metals exploration Company with a portfolio of projects in demand-driven commodities. It is focused on systematically exploring to unlock value across its portfolio.

Western Ridge is focused on the strategic exploration of critical metals in the US and Brazil, with the high-grade silver dominant polymetallic Keystone Project in Northern Nevada, and the Equador and Equador North niobium-tantalum projects in Paraiba / Rio-Grande do Norte states in Brazil.

### Announcements Referenced

<b>Date</b>	<b>Title</b>
7 January 2026	<a href="#"><u>Company Name Change to Western Ridge Resources Limited</u></a>
14 January 2026	<a href="#"><u>Aeromagnetic Survey Underway at Keystone Project, USA</u></a>
27 February 2026	<a href="#"><u>Results of Meeting</u></a>
3 March 2026	<a href="#"><u>Summit renamed to Western Ridge Resources Limited</u></a>
4 March 2026	<a href="#"><u>Multiple Targets in Aeromagnetic Survey - Keystone Project</u></a>
26 March 2026	<a href="#"><u>Drilling Approval Received - Keystone Project</u></a>
30 March 2026	<a href="#"><u>Western Ridge Completes OTC Listing</u></a>

The information in this announcement that relates to Exploration Results is extracted from the ASX announcements (Original Announcements), as referenced, which are available at [www.westernridgeresources.com](http://www.westernridgeresources.com). The Company confirms that it is not aware of any new information or data that materially affects the information included in the Original Announcements and, that all material assumptions and technical parameters underpinning the estimates in the Original Announcements continue to apply and have not materially changed. Summit confirms that the form and context in which the Competent Persons' findings are presented have not been materially modified from the original announcement.

## Appendix 1 - Tenement Schedule – Brazil

Area (Ha)	Status	Project Name	Commodity	State	Ownership	Tenement ID
500.98	Granted	Equador	REE/Nb/Ta	Rio Norte	Summit Minerals Brasil Mineracao Ltda	848075/2024
511.38	Granted	Equador	REE/Nb/Ta	Rio Norte	Summit Minerals Brasil Mineracao Ltda	848347/2024
195.28	Granted	Equador	REE/Nb/Ta	Rio Norte	RTB Geologia & Mineracao Ltda	848307/2024
281.95	Granted	Barra Lithium	Lithium	Paraíba	Summit Minerals Brasil Mineracao Ltda	846315/2024
49.46	Granted	Barra Lithium	Lithium	Paraíba	Summit Minerals Brasil Mineracao Ltda	846304/2024
87.34	Granted	Barra Lithium	Lithium	Paraíba	Summit Minerals Brasil Mineracao Ltda	846448/2024
54.64	Granted	Barra Lithium	Lithium	Paraíba	Summit Minerals Brasil Mineracao Ltda	846348/2024
297.57	Granted	T1	REE/Nb/Ta	Minas Gerais	Summit Minerals Brasil Mineracao Ltda	830796/2024
343.92	Granted	T2	REE/Nb/Ta	Minas Gerais	Summit Minerals Brasil Mineracao Ltda	830797/2024
,899.64	Granted	Santa Sousa	REE/Nb/Ta	Paraíba	Summit Minerals Brasil Mineracao Ltda	848091/2024
298.49	Granted	Hercules South	Lithium	Minas Gerais	RTB Geologia & Mineracao Ltda	832418/2023
990.91	Granted	Hercules South	Lithium	Minas Gerais	RTB Geologia & Mineracao Ltda	832419/2023
249.36	Granted	Hercules South	Lithium	Minas Gerais	RTB Geologia & Mineracao Ltda	832420/2023
97.87	Granted	Hercules South	Lithium	Minas Gerais	RTB Geologia & Mineracao Ltda	832421/2023
337.8	Granted	Hercules South	Lithium	Minas Gerais	RTB Geologia & Mineracao Ltda	832422/2023
997.19	Granted	Hercules South	Lithium	Minas Gerais	RTB Geologia & Mineracao Ltda	832423/2023
547.08	Application	Hercules North	Lithium	Minas Gerais	Mineracao Paranal Ltda	832225/2023
1,940.25	Granted	Hercules North	Lithium	Minas Gerais	Summit Minerals Brasil Mineracao Ltda	832433/2023
1,923.09	Granted	Hercules North	Lithium	Minas Gerais	Summit Minerals Brasil Mineracao Ltda	832434/2023
1,942.50	Granted	Hercules North	Lithium	Minas Gerais	Summit Minerals Brasil Mineracao Ltda	832435/2023
1,898.54	Granted	Hercules North	Lithium	Minas Gerais	Summit Minerals Brasil Mineracao Ltda	832436/2023
1,923.19	Granted	Hercules North	Lithium	Minas Gerais	Summit Minerals Brasil Mineracao Ltda	832798/2023

\*Summit holds and/or have 100% interest/rights on the tenements

### Disposal during the quarter

475.53	Surrendered	Juazeirinho	REE/Nb/Ta	Paraíba	Summit Minerals Brasil Mineracao Ltda	846060/2024
476.50	Surrendered	Aratapira	REE/Nb/Ta	Minas Gerais	Summit Minerals Brasil Mineracao Ltda	830140/2024
337.74	Surrendered	Aratapira	REE/Nb/Ta	Minas Gerais	Summit Minerals Brasil Mineracao Ltda	830141/2024
381.11	Surrendered	Aratapira	REE/Nb/Ta	Minas Gerais	Summit Minerals Brasil Mineracao Ltda	830142/2024
1,988.39	Surrendered	Santa Sousa	REE/Nb/Ta	Paraíba	Summit Minerals Brasil Mineracao Ltda	846062/2024
1,999.48	Surrendered	Santa Sousa	REE/Nb/Ta	Paraíba	Summit Minerals Brasil Mineracao Ltda	846063/2024
1,999.99	Surrendered	Santa Sousa	REE/Nb/Ta	Paraíba	Summit Minerals Brasil Mineracao Ltda	846064/2024
1,950.66	Surrendered	Hercules North	Lithium	Minas Gerais	Summit Minerals Brasil Mineracao Ltda	832796/2023
1,980.38	Surrendered	Hercules North	Lithium	Minas Gerais	Summit Minerals Brasil Mineracao Ltda	832797/2023

## Appendix 2 - Mineral Claims - Castor Project

Title No	Status	Expiry Date	Area (Ha)	Title Holder
2556264	Active	24/02/2027	51,33	80% Sumcanwa
2556265	Active	24/02/2027	51,33	80% Sumcanwa
2556266	Active	24/02/2027	51,32	80% Sumcanwa
2556267	Active	24/02/2027	51,31	80% Sumcanwa
2556268	Active	24/02/2027	51,31	80% Sumcanwa
2556269	Active	24/02/2027	51,31	80% Sumcanwa
2556270	Active	24/02/2027	51,31	80% Sumcanwa
2556271	Active	24/02/2027	51,3	80% Sumcanwa
2556272	Active	24/02/2027	51,3	80% Sumcanwa
2556273	Active	24/02/2027	51,3	80% Sumcanwa
2556274	Active	24/02/2027	51,3	80% Sumcanwa
2556275	Active	24/02/2027	48,4	80% Sumcanwa
2556276	Active	24/02/2027	49,11	80% Sumcanwa
2556277	Active	24/02/2027	51,3	80% Sumcanwa
2556278	Active	24/02/2027	51,3	80% Sumcanwa
2556279	Active	24/02/2027	51,3	80% Sumcanwa
2556280	Active	24/02/2027	51,3	80% Sumcanwa
2556281	Active	24/02/2027	51,3	80% Sumcanwa
2556282	Active	24/02/2027	51,29	80% Sumcanwa
2556283	Active	24/02/2027	50,43	80% Sumcanwa
2556284	Active	24/02/2027	51,29	80% Sumcanwa
2556285	Active	24/02/2027	51,29	80% Sumcanwa
2556286	Active	24/02/2027	51,29	80% Sumcanwa
2556287	Active	24/02/2027	37,96	80% Sumcanwa
2556288	Active	24/02/2027	51,28	80% Sumcanwa
2556289	Active	24/02/2027	51,28	80% Sumcanwa
2556290	Active	24/02/2027	51,27	80% Sumcanwa
2556291	Active	24/02/2027	51,27	80% Sumcanwa
2561168	Active	29/03/2027	49,99	80% Sumcanwa
2698908	Active	11/12/2025	51,41	80% Sumcanwa
2698909	Active	11/12/2025	51,41	80% Sumcanwa
2698910	Active	11/12/2025	51,41	80% Sumcanwa
2698911	Active	11/12/2025	51,41	80% Sumcanwa
2698912	Active	11/12/2025	51,4	80% Sumcanwa
2698913	Active	11/12/2025	51,41	80% Sumcanwa
2698914	Active	11/12/2025	51,4	80% Sumcanwa
2698915	Active	11/12/2025	51,4	80% Sumcanwa
2698916	Active	11/12/2025	51,39	80% Sumcanwa
2698917	Active	11/12/2025	51,39	80% Sumcanwa
2698918	Active	11/12/2025	51,39	80% Sumcanwa
2698919	Active	11/12/2025	51,39	80% Sumcanwa
2698920	Active	11/12/2025	51,39	80% Sumcanwa
2698921	Active	11/12/2025	51,38	80% Sumcanwa
2698922	Active	11/12/2025	51,38	80% Sumcanwa
2698923	Active	11/12/2025	51,38	80% Sumcanwa
2698924	Active	11/12/2025	51,37	80% Sumcanwa
2698925	Active	11/12/2025	51,37	80% Sumcanwa

2698926	Active	11/12/2025	51,37	80% Sumcanwa
2698927	Active	11/12/2025	51,36	80% Sumcanwa
2698928	Active	11/12/2025	51,36	80% Sumcanwa
2698929	Active	11/12/2025	51,36	80% Sumcanwa
2698930	Active	11/12/2025	51,36	80% Sumcanwa
2698931	Active	11/12/2025	51,36	80% Sumcanwa
2698932	Active	11/12/2025	51,36	80% Sumcanwa
2698933	Active	11/12/2025	51,36	80% Sumcanwa
2698934	Active	11/12/2025	51,35	80% Sumcanwa
2698935	Active	11/12/2025	51,35	80% Sumcanwa
2698936	Active	11/12/2025	51,35	80% Sumcanwa
2698937	Active	11/12/2025	51,35	80% Sumcanwa
2698938	Active	11/12/2025	51,35	80% Sumcanwa
2698939	Active	11/12/2025	51,35	80% Sumcanwa
2698940	Active	11/12/2025	51,35	80% Sumcanwa
2698941	Active	11/12/2025	51,35	80% Sumcanwa
2698942	Active	11/12/2025	51,34	80% Sumcanwa
2698943	Active	11/12/2025	51,34	80% Sumcanwa
2698944	Active	11/12/2025	51,34	80% Sumcanwa
2698945	Active	11/12/2025	51,34	80% Sumcanwa
2698946	Active	11/12/2025	51,34	80% Sumcanwa
2698947	Active	11/12/2025	51,34	80% Sumcanwa
2698948	Active	11/12/2025	51,34	80% Sumcanwa
2698949	Active	11/12/2025	51,34	80% Sumcanwa
2698950	Active	11/12/2025	51,34	80% Sumcanwa
2698951	Active	11/12/2025	51,34	80% Sumcanwa
2698952	Active	11/12/2025	51,33	80% Sumcanwa
2698953	Active	11/12/2025	51,33	80% Sumcanwa
2698954	Active	11/12/2025	51,33	80% Sumcanwa
2698955	Active	11/12/2025	51,33	80% Sumcanwa
2698956	Active	11/12/2025	51,33	80% Sumcanwa
2698957	Active	11/12/2025	51,33	80% Sumcanwa
2698958	Active	11/12/2025	51,33	80% Sumcanwa
2698959	Active	11/12/2025	51,33	80% Sumcanwa
2698960	Active	11/12/2025	51,32	80% Sumcanwa
2698961	Active	11/12/2025	51,32	80% Sumcanwa
2698962	Active	11/12/2025	51,32	80% Sumcanwa
2698965	Active	11/12/2025	51,32	80% Sumcanwa
2698966	Active	11/12/2025	51,32	80% Sumcanwa
2698967	Active	11/12/2025	51,32	80% Sumcanwa
2698968	Active	11/12/2025	51,32	80% Sumcanwa
2698969	Active	11/12/2025	51,32	80% Sumcanwa
2698970	Active	11/12/2025	51,32	80% Sumcanwa
2698971	Active	11/12/2025	51,32	80% Sumcanwa
2698972	Active	11/12/2025	51,32	80% Sumcanwa
2698973	Active	11/12/2025	51,32	80% Sumcanwa
2698974	Active	11/12/2025	51,32	80% Sumcanwa
2698975	Active	11/12/2025	51,31	80% Sumcanwa
2698976	Active	11/12/2025	51,31	80% Sumcanwa
2698977	Active	11/12/2025	51,31	80% Sumcanwa
2698978	Active	11/12/2025	51,31	80% Sumcanwa

2698979	Active	11/12/2025	51,31	80% Sumcanwa
2698980	Active	11/12/2025	51,31	80% Sumcanwa
2698981	Active	11/12/2025	51,31	80% Sumcanwa
2698982	Active	11/12/2025	51,3	80% Sumcanwa
2698983	Active	11/12/2025	51,3	80% Sumcanwa
2698984	Active	11/12/2025	51,3	80% Sumcanwa
2698985	Active	11/12/2025	51,3	80% Sumcanwa
2698986	Active	11/12/2025	51,3	80% Sumcanwa
2698987	Active	11/12/2025	51,3	80% Sumcanwa
2698988	Active	11/12/2025	51,3	80% Sumcanwa
2698989	Active	11/12/2025	51,29	80% Sumcanwa
2698990	Active	11/12/2025	51,29	80% Sumcanwa
2698991	Active	11/12/2025	51,29	80% Sumcanwa
2698992	Active	11/12/2025	51,29	80% Sumcanwa
2698993	Active	11/12/2025	34,58	80% Sumcanwa
2701442	Active	15/12/2025	51,41	80% Sumcanwa
2701443	Active	15/12/2025	51,41	80% Sumcanwa
2701444	Active	15/12/2025	51,41	80% Sumcanwa
2701445	Active	15/12/2025	51,41	80% Sumcanwa
2701446	Active	15/12/2025	51,41	80% Sumcanwa
2701447	Active	15/12/2025	51,41	80% Sumcanwa
2701448	Active	15/12/2025	51,29	80% Sumcanwa
2701449	Active	15/12/2025	51,29	80% Sumcanwa
2701450	Active	15/12/2025	51,29	80% Sumcanwa
2701451	Active	15/12/2025	51,28	80% Sumcanwa
2701452	Active	15/12/2025	51,28	80% Sumcanwa
2701453	Active	15/12/2025	51,28	80% Sumcanwa
2701454	Active	15/12/2025	51,28	80% Sumcanwa
2701455	Active	15/12/2025	51,28	80% Sumcanwa
2701456	Active	15/12/2025	51,27	80% Sumcanwa
2701457	Active	15/12/2025	51,26	80% Sumcanwa
2701458	Active	15/12/2025	51,26	80% Sumcanwa
2701459	Active	15/12/2025	51,26	80% Sumcanwa
2701460	Active	15/12/2025	51,26	80% Sumcanwa
2701461	Active	15/12/2025	51,25	80% Sumcanwa
2701462	Active	15/12/2025	51,25	80% Sumcanwa
2701463	Active	15/12/2025	51,25	80% Sumcanwa
2701464	Active	15/12/2025	51,25	80% Sumcanwa
2701465	Active	15/12/2025	51,24	80% Sumcanwa
2701466	Active	15/12/2025	51,24	80% Sumcanwa
2701467	Active	15/12/2025	51,24	80% Sumcanwa
2701468	Active	15/12/2025	51,24	80% Sumcanwa
2701469	Active	15/12/2025	51,24	80% Sumcanwa
2701470	Active	15/12/2025	51,24	80% Sumcanwa
2701471	Active	15/12/2025	51,23	80% Sumcanwa
2701472	Active	15/12/2025	51,23	80% Sumcanwa
2701473	Active	15/12/2025	51,23	80% Sumcanwa
2701474	Active	15/12/2025	51,23	80% Sumcanwa
2701475	Active	15/12/2025	51,23	80% Sumcanwa
2701476	Active	15/12/2025	51,23	80% Sumcanwa
2734578	Active	13/02/2026	51,37	80% Sumcanwa

2734579	Active	13/02/2026	51,37	80% Sumcanwa
2734580	Active	13/02/2026	51,37	80% Sumcanwa
2734581	Active	13/02/2026	51,36	80% Sumcanwa
2734582	Active	13/02/2026	51,36	80% Sumcanwa
2734583	Active	13/02/2026	51,36	80% Sumcanwa
2734584	Active	13/02/2026	51,35	80% Sumcanwa
2734585	Active	13/02/2026	51,35	80% Sumcanwa
2734586	Active	13/02/2026	51,35	80% Sumcanwa
2734587	Active	13/02/2026	51,34	80% Sumcanwa
2734588	Active	13/02/2026	51,34	80% Sumcanwa
2734589	Active	13/02/2026	51,34	80% Sumcanwa
2734590	Active	13/02/2026	51,34	80% Sumcanwa
2734591	Active	13/02/2026	51,34	80% Sumcanwa
2734592	Active	13/02/2026	51,33	80% Sumcanwa
2734593	Active	13/02/2026	51,33	80% Sumcanwa
2734594	Active	13/02/2026	51,33	80% Sumcanwa
2734595	Active	13/02/2026	51,32	80% Sumcanwa
2734596	Active	13/02/2026	51,32	80% Sumcanwa
2734597	Active	13/02/2026	51,32	80% Sumcanwa
2734598	Active	13/02/2026	51,31	80% Sumcanwa
2747329	Active	7/03/2026	32,38	80% Sumcanwa
2747330	Active	7/03/2026	43,91	80% Sumcanwa
2777395	Active	6/07/2026	51,4	80% Sumcanwa
2777396	Active	6/07/2026	51,4	80% Sumcanwa
2777397	Active	6/07/2026	51,4	80% Sumcanwa
2777398	Active	6/07/2026	51,4	80% Sumcanwa
2777399	Active	6/07/2026	51,39	80% Sumcanwa
2777400	Active	6/07/2026	51,39	80% Sumcanwa
2777401	Active	6/07/2026	51,39	80% Sumcanwa
2777402	Active	6/07/2026	51,39	80% Sumcanwa
2777403	Active	6/07/2026	51,38	80% Sumcanwa
2777404	Active	6/07/2026	51,38	80% Sumcanwa
2777405	Active	6/07/2026	51,38	80% Sumcanwa
2777406	Active	6/07/2026	51,38	80% Sumcanwa
2777407	Active	6/07/2026	51,37	80% Sumcanwa
2777408	Active	6/07/2026	51,37	80% Sumcanwa
2777409	Active	6/07/2026	51,36	80% Sumcanwa
2777410	Active	6/07/2026	51,36	80% Sumcanwa
2777411	Active	6/07/2026	51,36	80% Sumcanwa
2777412	Active	6/07/2026	51,36	80% Sumcanwa
2777413	Active	6/07/2026	51,36	80% Sumcanwa
2777414	Active	6/07/2026	51,36	80% Sumcanwa
2777415	Active	6/07/2026	51,35	80% Sumcanwa
2777416	Active	6/07/2026	51,34	80% Sumcanwa
2777417	Active	6/07/2026	51,33	80% Sumcanwa
2777418	Active	6/07/2026	51,32	80% Sumcanwa
2777419	Active	6/07/2026	51,38	80% Sumcanwa
2777420	Active	6/07/2026	51,38	80% Sumcanwa
2777421	Active	6/07/2026	51,37	80% Sumcanwa
2777422	Active	6/07/2026	51,37	80% Sumcanwa
2777423	Active	6/07/2026	51,36	80% Sumcanwa

2777424	Active	6/07/2026	51,36	80% Sumcanwa
2777425	Active	6/07/2026	51,35	80% Sumcanwa
2777426	Active	6/07/2026	51,35	80% Sumcanwa
2777427	Active	6/07/2026	51,34	80% Sumcanwa
2777428	Active	6/07/2026	51,34	80% Sumcanwa
2777429	Active	6/07/2026	51,34	80% Sumcanwa
2777430	Active	6/07/2026	51,34	80% Sumcanwa
2777431	Active	6/07/2026	51,34	80% Sumcanwa
2777432	Active	6/07/2026	51,34	80% Sumcanwa
2777433	Active	6/07/2026	51,34	80% Sumcanwa
2777434	Active	6/07/2026	51,33	80% Sumcanwa
2777435	Active	6/07/2026	51,33	80% Sumcanwa
2777436	Active	6/07/2026	51,33	80% Sumcanwa
2777437	Active	6/07/2026	51,33	80% Sumcanwa
2777438	Active	6/07/2026	51,33	80% Sumcanwa
2777439	Active	6/07/2026	51,33	80% Sumcanwa
2777440	Active	6/07/2026	51,33	80% Sumcanwa
2777441	Active	6/07/2026	51,33	80% Sumcanwa
2777442	Active	6/07/2026	51,33	80% Sumcanwa
2777443	Active	6/07/2026	51,33	80% Sumcanwa
2777444	Active	6/07/2026	51,32	80% Sumcanwa
2777445	Active	6/07/2026	51,32	80% Sumcanwa
2777446	Active	6/07/2026	51,32	80% Sumcanwa
2777447	Active	6/07/2026	51,32	80% Sumcanwa
2777448	Active	6/07/2026	51,32	80% Sumcanwa
2777449	Active	6/07/2026	51,32	80% Sumcanwa
2777450	Active	6/07/2026	51,32	80% Sumcanwa
2777451	Active	6/07/2026	51,32	80% Sumcanwa
2777452	Active	6/07/2026	51,32	80% Sumcanwa
2777453	Active	6/07/2026	51,32	80% Sumcanwa
2777454	Active	6/07/2026	51,32	80% Sumcanwa
2777455	Active	6/07/2026	51,31	80% Sumcanwa
2777456	Active	6/07/2026	51,31	80% Sumcanwa
2777457	Active	6/07/2026	51,31	80% Sumcanwa
2777458	Active	6/07/2026	51,31	80% Sumcanwa
2777459	Active	6/07/2026	51,31	80% Sumcanwa
2777460	Active	6/07/2026	51,31	80% Sumcanwa
2777461	Active	6/07/2026	51,31	80% Sumcanwa
2777462	Active	6/07/2026	51,3	80% Sumcanwa
2777463	Active	6/07/2026	51,3	80% Sumcanwa
2777464	Active	6/07/2026	51,3	80% Sumcanwa
2777465	Active	6/07/2026	51,3	80% Sumcanwa
2777466	Active	6/07/2026	51,3	80% Sumcanwa
2778581	Active	14/07/2026	51,4	80% Sumcanwa
2778582	Active	14/07/2026	51,4	80% Sumcanwa
2780753	Active	18/07/2026	51,4	80% Sumcanwa
2780754	Active	18/07/2026	51,4	80% Sumcanwa
2780755	Active	18/07/2026	51,4	80% Sumcanwa
2780756	Active	18/07/2026	51,4	80% Sumcanwa
2780757	Active	18/07/2026	51,4	80% Sumcanwa
2780758	Active	18/07/2026	51,4	80% Sumcanwa

2791185	Active	6/09/2026	51,41	80% Sumcanwa
2791186	Active	6/09/2026	51,41	80% Sumcanwa
2791187	Active	6/09/2026	51,41	80% Sumcanwa
2791188	Active	6/09/2026	51,41	80% Sumcanwa
2791189	Active	6/09/2026	51,4	80% Sumcanwa
2791190	Active	6/09/2026	51,4	80% Sumcanwa
2791191	Active	6/09/2026	51,4	80% Sumcanwa
2791192	Active	6/09/2026	51,4	80% Sumcanwa
2791193	Active	6/09/2026	51,39	80% Sumcanwa
2791194	Active	6/09/2026	51,39	80% Sumcanwa
2791195	Active	6/09/2026	51,39	80% Sumcanwa
2791196	Active	6/09/2026	51,39	80% Sumcanwa
2791197	Active	6/09/2026	51,38	80% Sumcanwa
2791198	Active	6/09/2026	51,38	80% Sumcanwa
2791199	Active	6/09/2026	51,38	80% Sumcanwa
2791200	Active	6/09/2026	51,38	80% Sumcanwa
2791201	Active	6/09/2026	51,37	80% Sumcanwa
2791202	Active	6/09/2026	51,37	80% Sumcanwa
2791203	Active	6/09/2026	51,36	80% Sumcanwa
2791204	Active	6/09/2026	51,36	80% Sumcanwa
2791205	Active	6/09/2026	51,35	80% Sumcanwa
2791206	Active	6/09/2026	51,35	80% Sumcanwa
2791207	Active	6/09/2026	51,34	80% Sumcanwa
2791208	Active	6/09/2026	51,34	80% Sumcanwa
2791209	Active	6/09/2026	51,33	80% Sumcanwa
2791210	Active	6/09/2026	51,33	80% Sumcanwa
2791211	Active	6/09/2026	51,33	80% Sumcanwa
2791212	Active	6/09/2026	51,33	80% Sumcanwa
2791213	Active	6/09/2026	51,31	80% Sumcanwa
2791214	Active	6/09/2026	51,31	80% Sumcanwa
2792151	Active	12/09/2026	51,32	80% Sumcanwa
2792152	Active	12/09/2026	51,32	80% Sumcanwa
2792153	Active	12/09/2026	51,32	80% Sumcanwa
2792154	Active	12/09/2026	51,32	80% Sumcanwa
2792155	Active	12/09/2026	51,31	80% Sumcanwa
2792156	Active	12/09/2026	51,31	80% Sumcanwa
2792157	Active	12/09/2026	51,31	80% Sumcanwa
2792158	Active	12/09/2026	51,31	80% Sumcanwa
2792159	Active	12/09/2026	51,3	80% Sumcanwa
2792160	Active	12/09/2026	51,3	80% Sumcanwa
2792161	Active	12/09/2026	51,3	80% Sumcanwa
2792162	Active	12/09/2026	51,3	80% Sumcanwa
2792163	Active	12/09/2026	51,3	80% Sumcanwa
2792164	Active	12/09/2026	51,3	80% Sumcanwa
2799086	Active	15/10/2026	50,19	80% Sumcanwa
2799087	Active	15/10/2026	50,84	80% Sumcanwa
2818920	Active	29/01/2027	51,39	80% Sumcanwa

## Appendix 3 - Tenement Schedule - Australia

State	Authority	Phase	Name	Principal Holder	Holding	Expiry	Area
WA	E 28/3426	Current	Stallion REE Uranium	Summit Minerals Limited	100%	4-Nov-2030	18 Blocks
WA	E 28/3251	Current	Highway South	Summit Minerals Limited	100%	1-Oct-2028	17 Blocks

### Disposal during the quarter

State	Authority	Phase	Name	Principal Holder	Previous holding
WA	E 28/2999	Surrendered	Stallion REE Uranium	Bow Island Resources Pty Ltd	100%
WA	E 28/3241	Surrendered	Stallion North	Summit Minerals Limited	100%
WA	E 28/3251	Surrendered	Highway South	Summit Minerals Limited	100%

## Appendix 5B

### Mining exploration entity or oil and gas exploration entity quarterly cash flow report

Name of entity

WESTERN RIDGE RESOURCES LIMITED

ABN

24 655 401 675

Quarter ended ("current quarter")

31 MARCH 2026

Consolidated statement of cash flows	Current quarter \$A'000	Year to date (9 months) \$A'000
<b>1. Cash flows from operating activities</b>		
1.1 Receipts from customers	-	-
1.2 Payments for		
(a) exploration & evaluation	-	-
(b) development	-	-
(c) production	-	-
(d) staff costs	(45)	(155)
(e) administration and corporate costs	(194)	(481)
1.3 Dividends received (see note 3)	-	-
1.4 Interest received	18	46
1.5 Interest and other costs of finance paid	-	-
1.6 Income taxes paid	-	-
1.7 Government grants and tax incentives	-	-
1.8 Other (GST Paid/Received)	-	5
<b>1.9 Net cash from / (used in) operating activities</b>	<b>(221)</b>	<b>(585)</b>

<b>2. Cash flows from investing activities</b>		
2.1 Payments to acquire or for:		
(a) entities	-	-
(b) tenements	-	-
(c) property, plant and equipment	-	-
(d) exploration & evaluation	(874)	(1,362)
(e) investments	-	-
(f) other non-current assets	-	-

## Mining exploration entity or oil and gas exploration entity quarterly cash flow report

Consolidated statement of cash flows		Current quarter \$A'000	Year to date (9 months) \$A'000
2.2	Proceeds from the disposal of:		
	(a) entities	-	-
	(b) tenements	-	-
	(c) property, plant and equipment	-	-
	(d) investments	-	-
	(e) other non-current assets	-	-
2.3	Cash flows from loans to other entities	-	-
2.4	Dividends received (see note 3)	-	-
2.5	Other (provide details if material)	-	-
<b>2.6</b>	<b>Net cash from / (used in) investing activities</b>	<b>(874)</b>	<b>(1,362)</b>

<b>3.</b>	<b>Cash flows from financing activities</b>		
3.1	Proceeds from issues of equity securities (excluding convertible debt securities)	-	1,672
3.2	Proceeds from issue of convertible debt securities	-	-
3.3	Proceeds from exercise of options	-	-
3.4	Transaction costs related to issues of equity securities or convertible debt securities	-	(100)
3.5	Proceeds from borrowings	-	-
3.6	Repayment of borrowings	-	-
3.7	Transaction costs related to loans and borrowings	-	-
3.8	Dividends paid	-	-
3.9	Other (provide details if material)	-	-
<b>3.10</b>	<b>Net cash from / (used in) financing activities</b>	<b>-</b>	<b>1,572</b>

<b>4.</b>	<b>Net increase / (decrease) in cash and cash equivalents for the period</b>		
4.1	Cash and cash equivalents at beginning of period	2,110	1,405
4.2	Net cash from / (used in) operating activities (item 1.9 above)	(221)	(585)
4.3	Net cash from / (used in) investing activities (item 2.6 above)	(874)	(1,362)
4.4	Net cash from / (used in) financing activities (item 3.10 above)	-	1,572

## Mining exploration entity or oil and gas exploration entity quarterly cash flow report

<b>Consolidated statement of cash flows</b>		<b>Current quarter \$A'000</b>	<b>Year to date (9 months) \$A'000</b>
4.5	Effect of movement in exchange rates on cash held	(25)	(40)
<b>4.6</b>	<b>Cash and cash equivalents at end of period</b>	<b>990</b>	<b>990</b>

<b>5.</b>	<b>Reconciliation of cash and cash equivalents</b> at the end of the quarter (as shown in the consolidated statement of cash flows) to the related items in the accounts	<b>Current quarter \$A'000</b>	<b>Previous quarter \$A'000</b>
5.1	Bank balances	990	878
5.2	Call deposits	-	1,232
5.3	Bank overdrafts	-	-
5.4	Other (provide details)	-	-
<b>5.5</b>	<b>Cash and cash equivalents at end of quarter (should equal item 4.6 above)</b>	<b>990</b>	<b>2,110</b>

<b>6.</b>	<b>Payments to related parties of the entity and their associates</b>	<b>Current quarter \$A'000</b>
6.1	Aggregate amount of payments to related parties and their associates included in item 1	27
6.2	Aggregate amount of payments to related parties and their associates included in item 2	70

*Note: if any amounts are shown in items 6.1 or 6.2, your quarterly activity report must include a description of, and an explanation for, such payments.*

## Mining exploration entity or oil and gas exploration entity quarterly cash flow report

<b>7. Financing facilities</b>	<b>Total facility amount at quarter end \$A'000</b>	<b>Amount drawn at quarter end \$A'000</b>
<i>Note: the term "facility" includes all forms of financing arrangements available to the entity. Add notes as necessary for an understanding of the sources of finance available to the entity.</i>		
7.1 Loan facilities	-	-
7.2 Credit standby arrangements	-	-
7.3 Other (please specify)	-	-
7.4 <b>Total financing facilities</b>	-	-
7.5 <b>Unused financing facilities available at quarter end</b>		-
7.6 Include in the box below a description of each facility above, including the lender, interest rate, maturity date and whether it is secured or unsecured. If any additional financing facilities have been entered into or are proposed to be entered into after quarter end, include a note providing details of those facilities as well.	N/A	

<b>8. Estimated cash available for future operating activities</b>	<b>\$A'000</b>
8.1 Net cash from / (used in) operating activities (item 1.9)	(221)
8.2 (Payments for exploration & evaluation classified as investing activities) (item 2.1(d))	(874)
8.3 Total relevant outgoings (item 8.1 + item 8.2)	(1,095)
8.4 Cash and cash equivalents at quarter end (item 4.6)	990
8.5 Unused finance facilities available at quarter end (item 7.5)	-
8.6 Total available funding (item 8.4 + item 8.5)	990
8.7 <b>Estimated quarters of funding available (item 8.6 divided by item 8.3)</b>	0.90
<i>Note: if the entity has reported positive relevant outgoings (ie a net cash inflow) in item 8.3, answer item 8.7 as "N/A". Otherwise, a figure for the estimated quarters of funding available must be included in item 8.7.</i>	
8.8 If item 8.7 is less than 2 quarters, please provide answers to the following questions:	
8.8.1 Does the entity expect that it will continue to have the current level of net operating cash flows for the time being and, if not, why not?	
Answer: Subject to exploration results and available cash, the Company expects to incur a similar level of net operating cash flows for the next quarter.	
8.8.2 Has the entity taken any steps, or does it propose to take any steps, to raise further cash to fund its operations and, if so, what are those steps and how likely does it believe that they will be successful?	
Answer: Based on its past record for raising requisite funding, the Company expects that it will be able to fund its ongoing activities via future equity financings.	
8.8.3 Does the entity expect to be able to continue its operations and to meet its business objectives and, if so, on what basis?	
Answer: The Company believes it will obtain sufficient funding to continue its operations as detailed in item 8.8(2) above.	

## Compliance statement

- 1 This statement has been prepared in accordance with accounting standards and policies which comply with Listing Rule 19.11A.
- 2 This statement gives a true and fair view of the matters disclosed.

Date: 30 April 2026

Authorised by: **The Board of Directors of Western Ridge Resources Limited**  
(Name of body or officer authorising release – see note 4)

## Notes

1. This quarterly cash flow report and the accompanying activity report provide a basis for informing the market about the entity's activities for the past quarter, how they have been financed and the effect this has had on its cash position. An entity that wishes to disclose additional information over and above the minimum required under the Listing Rules is encouraged to do so.
2. If this quarterly cash flow report has been prepared in accordance with Australian Accounting Standards, the definitions in, and provisions of, *AASB 6: Exploration for and Evaluation of Mineral Resources* and *AASB 107: Statement of Cash Flows* apply to this report. If this quarterly cash flow report has been prepared in accordance with other accounting standards agreed by ASX pursuant to Listing Rule 19.11A, the corresponding equivalent standards apply to this report.
3. Dividends received may be classified either as cash flows from operating activities or cash flows from investing activities, depending on the accounting policy of the entity.
4. If this report has been authorised for release to the market by your board of directors, you can insert here: "By the board". If it has been authorised for release to the market by a committee of your board of directors, you can insert here: "By the [*name of board committee – eg Audit and Risk Committee*]". If it has been authorised for release to the market by a disclosure committee, you can insert here: "By the Disclosure Committee".
5. If this report has been authorised for release to the market by your board of directors and you wish to hold yourself out as complying with recommendation 4.2 of the ASX Corporate Governance Council's *Corporate Governance Principles and Recommendations*, the board should have received a declaration from its CEO and CFO that, in their opinion, the financial records of the entity have been properly maintained, that this report complies with the appropriate accounting standards and gives a true and fair view of the cash flows of the entity, and that their opinion has been formed on the basis of a sound system of risk management and internal control which is operating effectively.