

29 April 2026

## Multiple New Gold Discoveries Expand Tin Dog Potential

### Highlights

- Assays received for the first 20 holes of the Phase 2 drill program at the Laverton Gold Project significantly expand the Tin Dog mineralised footprint and define a mineralised structural corridor, supporting strong potential for further discoveries and resource growth.
- New intersections include:
  - 8m @ 3.0g/t Au from 58m including 5m @ 4.5g/t Au from 61m (LVRC052)
  - 1m @ 24.9g/t Au from 86m (LVRC048)
  - 2m @ 7.6g/t Au from 15m (LVRC043)
  - 8m @ 1.3g/t Au from surface including 3m @ 2.8g/t from surface (LVRC043)
  - 15m @ 1.6g/t Au from 116m including 9m @ 2.3g/t Au from 116m (LVRC042)
  - 30m @ 1.0g/t Au from 24m including 12m @ 1.4g/t Au from 24m (LVRC043)
  - 21m @ 0.7g/t Au from 83m including 3m @ 1.8g/t Au from 83m (LVRC042)
- Drilling confirms two new mineralised lodes, The Don and Wilpro, each extending over 500m strike length with both open along strike and at depth.
- Mineralisation is clearly linked to NW–SE trending shear zones associated with the regional Hornet–Stewart shear system, representing the primary control on gold mineralisation.
- Previous focus on opposing NE–SW Brunswick lodes reinterpreted as secondary cross-link structures, highlighting that earlier drilling did not adequately test the main mineralised trend.
- Recognition of multiple parallel NW–SE structures across the Project, all displaying quartz veining and alteration, but largely untested by drilling, for follow up.
- Assays from the remaining 22 holes of the Phase 2 drill program, including Red Dog results, are pending and anticipated in the coming weeks.

---

**Latitude 66 Limited, ACN 115 768 986 (ASX: LAT)** (“Lat66” or “the Company”) is pleased to announce further high-grade gold results from Reverse Circulation (RC) drilling completed at the Tin Dog Prospect, part of the Laverton Gold Project in Western Australia.

Results from the first 20 holes of the 42-hole Phase 2 drill program have confirmed the discovery of a significant mineralised structural corridor, with two newly defined lodes, The Don and Wilpro, both extending over strike lengths exceeding 500m. Both lodes remain open along strike and at depth, and demonstrate strong geological and grade continuity.

Importantly, drilling has validated a revised structural model, confirming that NW–SE trending shear zones associated with the regionally significant Hornet–Stewart shear system represent the primary control on gold mineralisation at Tin Dog. This interpretation marks a step-change in understanding of the system, with historical exploration largely focused on opposing NE–SW oriented structures that are now interpreted to be secondary cross-linking features, opening up more areas for potential zones of gold mineralisation.

## Latitude 66's Managing Director, Grant Coyle, commented:

"The initial results from our Phase 2 drill program have defined two entirely new, 500m-plus lodes on our granted Tin Dog mining lease with grades that are consistent with other major desposits in the area.

"The identification of the mineralised structures materially expands the prospective footprint of the broader Laverton Gold Project, with multiple parallel NW–SE trends identified across the tenement package that remain largely untested. These structures display consistent quartz veining and alteration signatures, providing clear targets for follow-up drilling aimed at rapidly growing the contained mineral resources.

"Historical exploration focused on the now recognised secondary cross-link structures, so the main mineralised trend is relatively unexplored. With the system wide open and assays pending for the remaining 22 drill holes in the Phase 2 program, including Red Dog results, we see strong potential for continued discovery and resource growth."

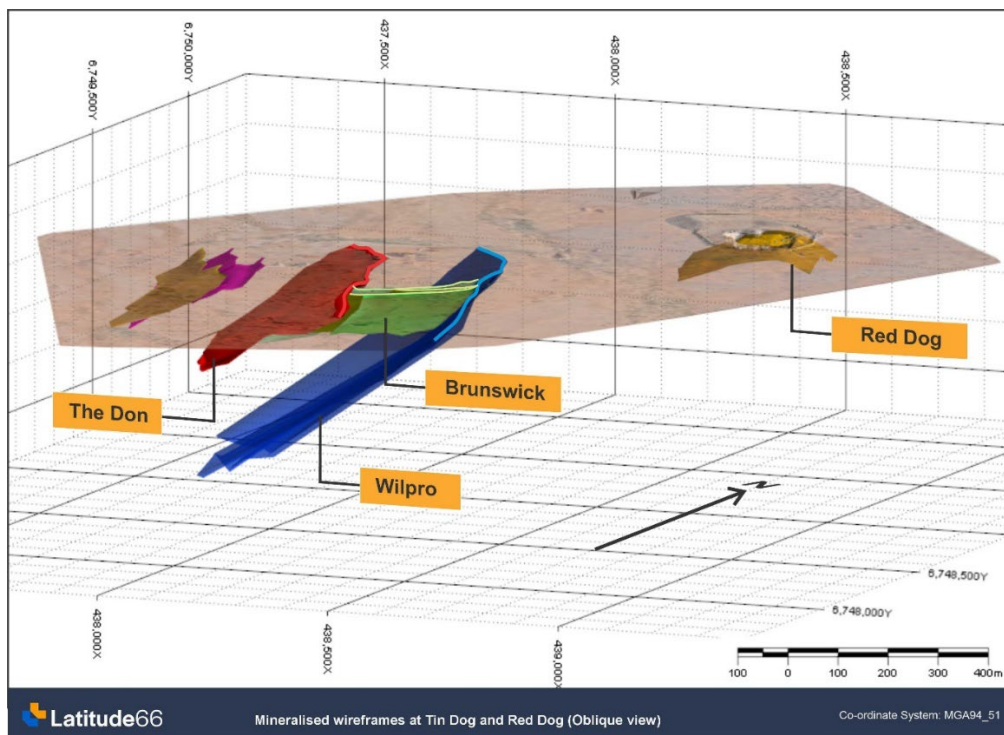


Figure 1: Oblique view (looking north-west) of the multiple mineralised lodes within the Laverton Project

## Drill Results

The first 20 holes of the 42 hole phase 2 drill program have now been received, with all results returned from the Tin Dog Prospect. Multiple high-grade intersections as well as broad bulk tonnage intersections have been received that complement previous intersections returned from the December 2025 drill program. New intersections include (Figure 2):

- **8m @ 3.0g/t Au from 58m including 5m @ 4.5g/t Au from 61m (LVRC052)**
- **1m @ 24.9g/t Au from 86m (LVRC048)**
- **2m @ 7.6g/t Au from 15m (LVRC043)**
- **8m @ 1.3g/t Au from surface including 3m @ 2.8g/t from surface (LVRC043)**
- **15m @ 1.6g/t Au from 116m including 9m @ 2.3g/t Au from 116m (LVRC042)**
- **21m @ 0.7g/t Au from 83m including 3m @ 1.8g/t Au from 83m (LVRC042)**
- **4m @ 1.8g/t Au from 47m (LVRC060)**
- **30m @ 1.0g/t Au from 24m including 12m @ 1.4g/t Au from 24m (LVRC043)**
- **5m @ 1.8g/t Au from 79m including 2m @ 3.7g/t Au from 81m (LVRC054)**
- **3m @ 2.5g/t Au from 67m (LVRC044)**

Previous intersections from the December 2025 drill program<sup>1</sup> include:

- **2m @ 12.5g/t Au from 83m (LVRC021)**
- **4m @ 3.9g/t Au from 54m including 2m @ 7.5g/t Au from 54m (LVRC024)**
- **11m @ 2.3g/t Au from 83m including 8m @ 3.0g/t Au from 83m (LVRC001)**
- **5m @ 1.9g/t Au from 24m including 2m @ 3.1g/t Au from 27m (LVRC004)**
- **19m @ 1.1g/t Au from 117m including 4m @ 2.5g/t Au from 119m (LVRC022)**
- **8m @ 1.4g/t Au from 8m (LVRC003)**
- **5m @ 1.2g/t Au from 2m (LVRC001)**

Drilling was designed to follow up areas of strong grade continuity associated with NW–SE trending surface quartz veining that had seen limited effective testing at depth by previous explorers.

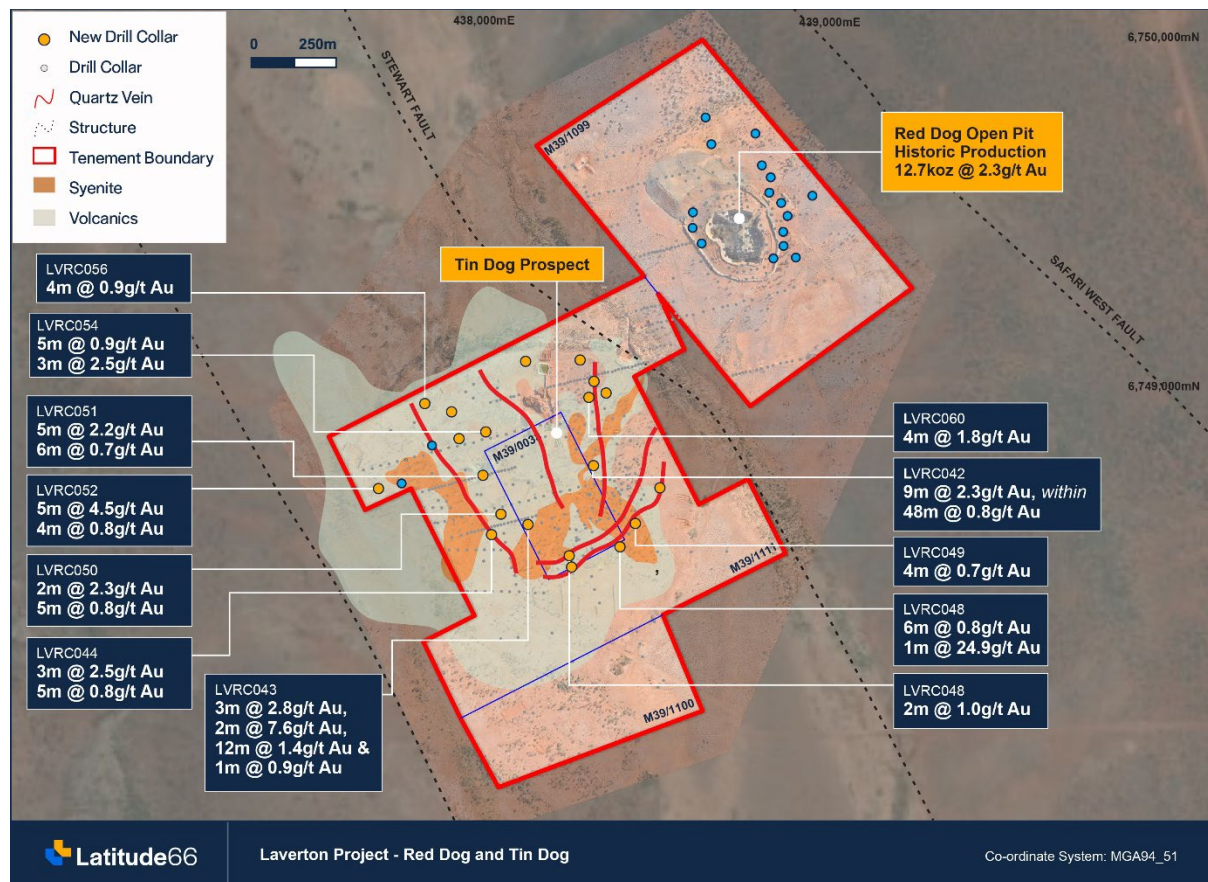


Figure 2: Plan view of the Red Dog and Tin Dog Prospects with significant intersections

Results from both the December 2025 program<sup>1</sup> and the current drilling have now confirmed that at least two of these structures, The Don and Wilpro lodes (Figure 1 and Figure 3), are consistently mineralised over strike lengths exceeding 500m, and remain open along strike and at depth. In both cases, the lodes are readily identifiable in drilling through zones of shearing, strong alteration and sulphide mineralisation.

These results demonstrate that NW–SE trending structures associated with the regional Hornet–Stewart shear system represent a primary control on gold mineralisation at Tin Dog. Importantly, the interaction between these structures and the syenite intrusive appears to play a key role in localising higher-grade mineralisation.

This evolving structural interpretation indicates that the NE–SW oriented Brunswick lodes are likely secondary cross-linking structures between the main regional shear corridors, rather than the principal

<sup>1</sup> LAT ASX Announcement 20 January 2026 – Laverton Gold Project Drilling Delivers Wide High-Grade Au

mineralised architecture. The recognition of this relationship materially expands the exploration opportunity, with multiple untested structural positions of similar orientation identified across the broader tenement package.

### Technical Discussion

Drilling results continue to demonstrate strong geological and grade continuity across both shallow and deeper portions of the Tin Dog system, supporting the development of a coherent structural model for gold mineralisation.

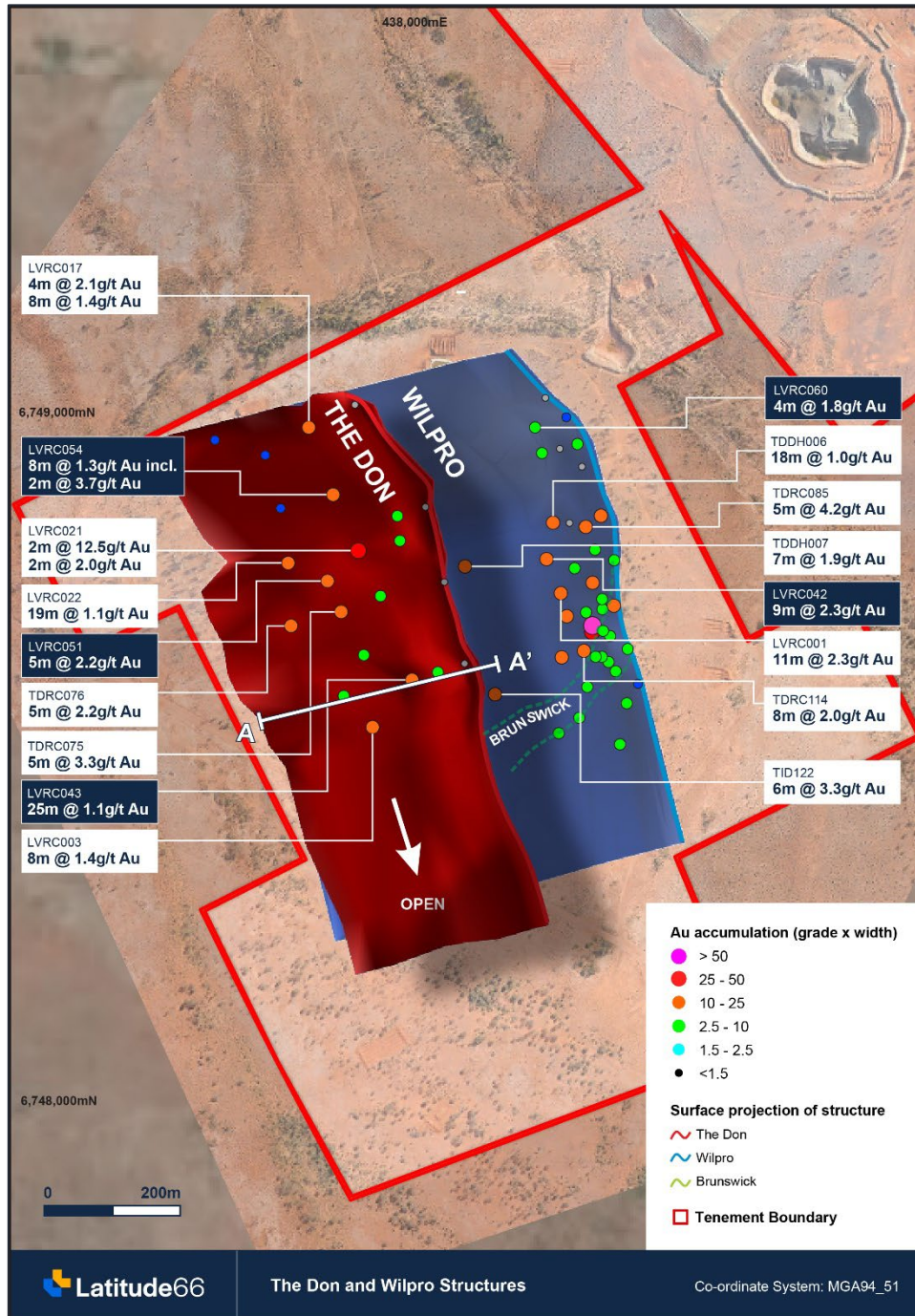


Figure 3: Plan view of Tin Dog showing surface projects of The Don and Wilpro lodes and drill results. Results include latest and previous results<sup>2</sup>

<sup>2</sup> Previously reported by ASX:LAT on 20/01/2026 – “Drilling Delivers Wide, High-Grade Gold at Laverton Gold Project” and previously reported by ASX:LAT on 27/11/2025 – “Binding Option and JV Agreements over Laverton Gold Project”

At a prospect scale, mineralisation is now understood to be associated with two dominant structural orientations:

- **NW–SE trending shear zones**, interpreted as being associated with the regionally significant Hornet–Stewart shear system; and
- **NE–SW trending cross-link structures**, including the Brunswick lodes, which appear to connect or transfer strain between the primary shear corridors.

The NW–SE structures are now interpreted to represent the principal fluid pathways, with gold mineralisation preferentially developed where these structures interact with favourable lithologies, particularly the syenite intrusive and its margins. These zones are characterised by strong quartz veining, silica–sericite alteration and disseminated sulphide mineralisation, and can be consistently identified in both drilling and surface mapping.

The definition of The Don and Wilpro lodes over strike lengths exceeding 500m highlights the scale and continuity of this structural corridor, with both lodes remaining open along strike and at depth. The consistency of alteration and mineralisation observed in drilling provides confidence in the geological continuity of these structures and supports the potential for further systematic resource definition.

Higher-grade mineralisation appears to be localised within zones of increased structural complexity, including:

- intersections between NW–SE shears and NE–SW cross structures;
- zones of enhanced veining intensity; and
- contacts between syenite and surrounding volcanic units.

This suggests that grade distribution is strongly structurally controlled, with the syenite acting as both a rheological and chemical trap for mineralising fluids.

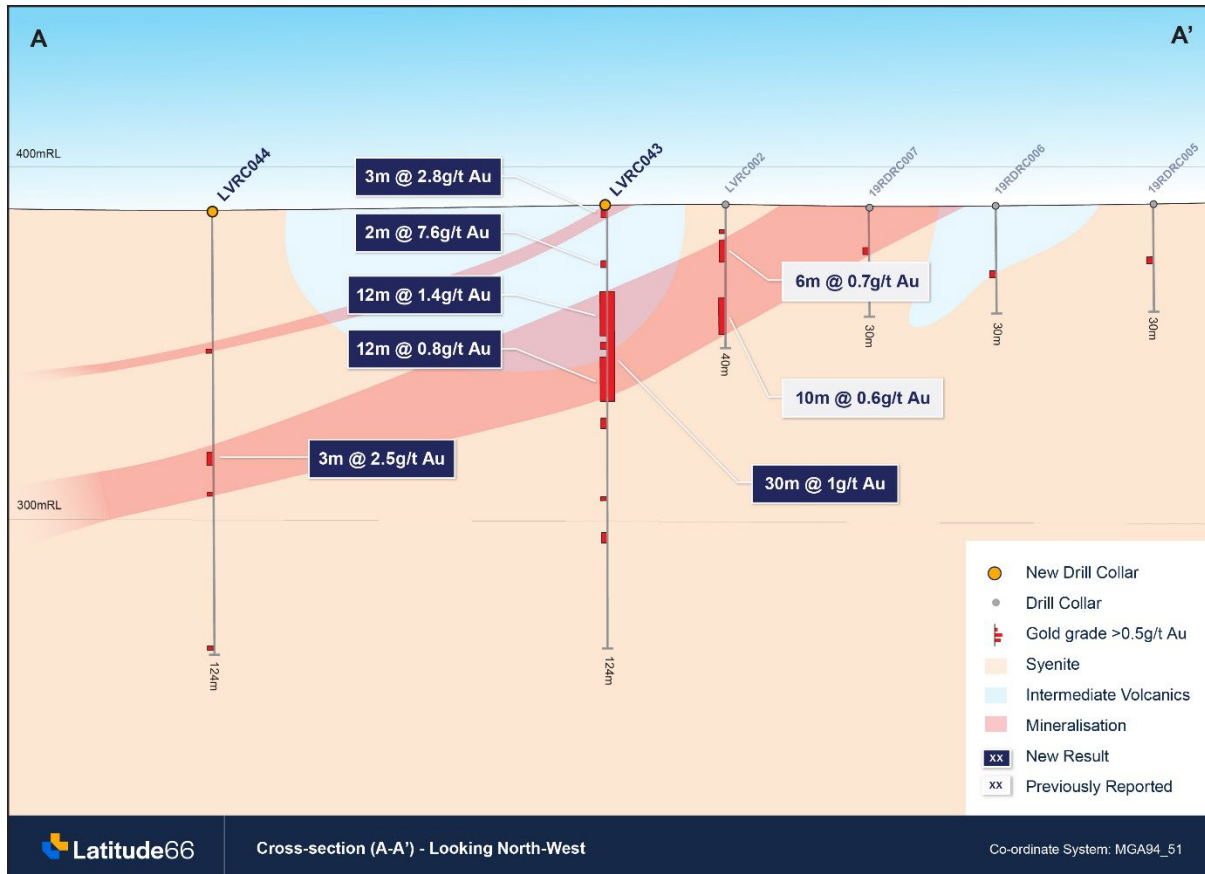


Figure 4: Cross-section (looking north-west of The Don mineralised structure)<sup>2</sup>

Importantly, the recognition that the Brunswick lodes likely represent second-order cross-link structures, rather than the primary mineralised trend, has significant implications for exploration strategy. Historical drilling was largely focused on these NE–SW orientations, whereas the current results demonstrate that the main mineralised system lies along the NW–SE structural corridor, which remains only partially tested.

Multiple parallel and sub-parallel NW–SE structures are evident in surface mapping and geophysical datasets across the tenement package. These structures display similar quartz veining and alteration signatures but have seen limited or no effective drilling, representing high-priority targets for follow-up exploration.

Overall, the evolving geological model supports the interpretation of a multi-phase, structurally controlled gold mineralised system, with clear vectors for both lateral and depth extensions. This provides a strong foundation for ongoing drilling aimed at delineating Mineral Resources and expanding the overall mineralised footprint at Tin Dog.

### Forward Work Program

Latitude 66 is well funded and intends to rapidly advance the Laverton Gold Project towards Mineral Resource definition and development with the following work programs:

- Receipt and interpretation of assays from the Red Dog prospect.
- Progress permitting across the Red Dog and Tin Dog prospects to enable near term development options for the Laverton Gold Project.

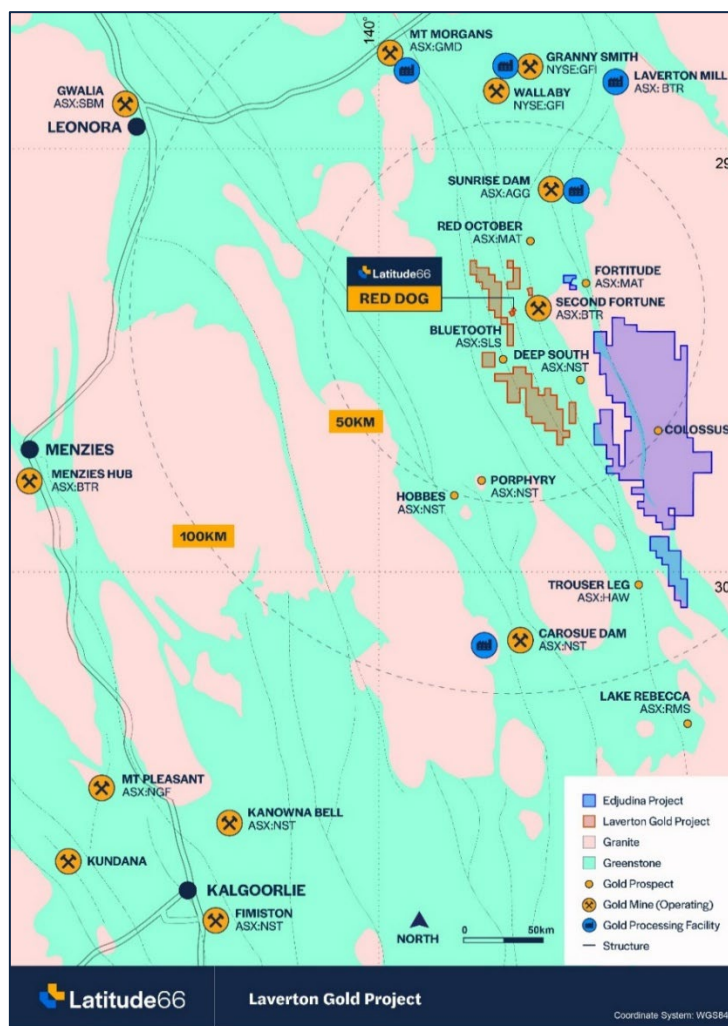


Figure 5: Regional map showing location of the Laverton Gold Project tenement package being acquired and LAT's nearby existing Edjudina Project, regional deposits/mines and processing infrastructure

- Ends -

This announcement has been authorised for release by the Board of Latitude 66 Limited

For Investor Queries:

Grant Coyle - Managing Director  
Latitude 66 Limited  
E: [grant@lat66.com](mailto:grant@lat66.com)  
T: +61 8 9380 9440

For Broker and Media Queries:

Jason Mack – Investor Relations  
White Noise Communications  
E: [jason@whitenoisecomms.com](mailto:jason@whitenoisecomms.com)  
T: +61 0400 643 799

### Forward Looking Statement

The forward-looking statements in this announcement are based on the Company's current expectations about future events. They are, however, subject to known and unknown risks, uncertainties and assumptions, many of which are outside the control of the Company and its Directors, which could cause actual results, performance or achievements to differ materially from future results, performance or achievements expressed or implied by the forward-looking statements.

### Competent Person's Statement

The information in this announcement that relates to Exploration Results is based on and fairly represents information and supporting documentation compiled by Mr Toby Wellman, a competent person who is a Member of The Australasian Institute of Mining and Metallurgy (MAusIMM). Mr Wellman has sufficient experience that is relevant to the style of mineralisation and type of deposit under consideration and to the activity which he is undertaking to qualify as a Competent Person as defined in the 2012 Edition of the Australasian Code for Reporting of Exploration Results, Mineral Resources and Ore Reserves (the "JORC Code"). Mr Wellman is the Technical Director of Latitude 66 Limited and consents to the inclusion in this announcement of the Exploration Results in the form and context in which they appear.

The information that relates to the Mineral Resource Estimate is based on information compiled by Ms Susan Havlin MAusIMM, a full-time employees of Optiro Pty Ltd. Both Competent Persons have sufficient experience relevant to the style of mineralisation and type of deposit under consideration to qualify as Competent Persons as defined in the 2012 Edition of the JORC Code, and both have consented to the inclusion of their respective information in the form and context in which it appears.

## About Latitude 66

Latitude 66 Limited (ASX:LAT) is a mineral exploration and development company focused on advancing gold and critical mineral projects within the Tier 1 jurisdictions of Finland and Western Australia.

The Company's flagship asset is the Kuusamo Schist Belt (KSB) Project in Northern Finland, an advanced gold-cobalt development project with a Mineral Resource Estimate of 650koz gold and 5,840t cobalt. Backed by a highly economic Scoping Study and a clear permitting pathway, Latitude 66 is advancing development activities at the KSB Project, which is strategically positioned to supply the critical mineral cobalt to the European market.

In Western Australia, Latitude 66 is advancing a portfolio of assets led by its primary focus on the Laverton Gold Project. Located within a world-class gold district, this near-term development opportunity encompassing the advanced Red Dog and Tin Dog targets, and benefits from granted mining leases, extensive historical drilling, and proximity to multiple operating plants and established haul road networks.



*Location Map of Latitude 66's Projects in Finland and Western Australia*

## Appendix A – Drill Collar Details

Hole ID	Northing	Easting	RL	Azimuth	Dip	Depth	Type
LVRC042	6748800	438250	388	0	-90	142	RC
LVRC043	6748631	438062	385	0	-90	124	RC
LVRC044	6748602	437956	384.4	0	-90	124	RC
LVRC045	6748540	438180	384	0	-90	67	RC
LVRC046	6748510	438185	383	0	-90	54	RC
LVRC047	6748735	438440	382.3	120	-60	132	RC
LVRC048	6748570	438325	382.7	0	-90	90	RC
LVRC049	6748636	438370	383.7	120	-60	102	RC
LVRC050	6748662	437984	385.4	0	-90	132	RC
LVRC051	6748772	437932	386.6	0	-90	144	RC
LVRC052	6748734	437631	382.9	75	-60	150	RC
LVRC053	6748878	437863	385.4	0	-90	144	RC
LVRC054	6748898	437940	386.3	0	-90	102	RC
LVRC055	6748955	437840	384.3	0	-90	96	RC
LVRC056	6748977	437767	384.8	0	-90	150	RC
LVRC057	6749097	438054	384.2	0	-90	92	RC
LVRC058	6749103	438211	383.2	75	-60	100	RC
LVRC059	6749041	438252	385.9	0	-90	78	RC
LVRC060	6748996	438238	389.5	0	-90	100	RC
LVRC061	6749009	438287	386.7	0	-90	54	RC
LVRC062	6749399	438831	384.4	0	-90	78	RC
LVRC063	6749432	438800	384.5	0	-90	63	RC
LVRC064	6749472	438797	385	0	-90	75	RC
LVRC065	6749517	438807	385.1	0	-90	70	RC
LVRC066	6749554	438791	385.3	0	-90	60	RC
LVRC067	6749585	438756	385.6	0	-90	60	RC
LVRC068	6749628	438760	386	0	-90	81	RC
LVRC069	6749663	438737	386.8	0	-90	60	RC
LVRC070	6749755	438716	387.8	0	-90	60	RC
LVRC071	6749724	438588	386.8	0	-90	80	RC
LVRC072	6749801	438573	387	0	-90	60	RC
LVRC073	6749528	438537	385.8	0	-90	162	RC
LVRC074	6749440	438563	385.5	0	-90	54	RC
LVRC075	6749485	438535	385.6	0	-90	54	RC
LVRC076	6749397	438770	386	30	-60	66	RC
LVRC077	6748750	437700	386.3	75	-60	250	RC
LVRC078	6748858	437786	385	0	-90	190	RC
LVRC079	6749575	438880	385.8	255	-60	214	RC

## Appendix B – Significant Drill Result Details (>0.4g/t Au 2m max. internal dilution)

Hole ID	From (m)	To (m)	Width (m)	Au (g/t)		Hole ID	From (m)	To (m)	Width (m)	Au (g/t)
LVRC042	9	10	1	0.48		LVRC048	49	50	1	1
LVRC042	18	19	1	0.41		LVRC048	64	65	1	0.47
LVRC042	44	45	1	0.62		LVRC048	75	76	1	1.55
LVRC042	65	66	1	1.06		LVRC048	76	77	1	1.15
LVRC042	79	80	1	0.46		LVRC048	77	78	1	0.07
LVRC042	80	81	1	0.2		LVRC048	78	79	1	0.35
LVRC042	81	82	1	0.31		LVRC048	79	80	1	1.12
LVRC042	82	83	1	0.28		LVRC048	80	81	1	0.51
LVRC042	83	84	1	1.46		LVRC048	86	87	1	24.9
LVRC042	84	85	1	2.13		LVRC049	3	4	1	0.49
LVRC042	85	86	1	1.7		LVRC049	4	5	1	0.12
LVRC042	86	87	1	0.27		LVRC049	5	6	1	0.04
LVRC042	87	88	1	0.33		LVRC049	6	7	1	0.78
LVRC042	88	89	1	0.51		LVRC049	13	14	1	0.68
LVRC042	89	90	1	0.2		LVRC049	14	15	1	0.74
LVRC042	90	91	1	0.42		LVRC049	15	16	1	0.39
LVRC042	91	92	1	0.84		LVRC049	16	17	1	0.82
LVRC042	92	93	1	0.7		LVRC049	24	25	1	1.21
LVRC042	93	94	1	0.22		LVRC049	25	26	1	0.76
LVRC042	94	95	1	0.17		LVRC049	38	39	1	0.45
LVRC042	95	96	1	0.71		LVRC049	43	44	1	1.49
LVRC042	96	97	1	0.9		LVRC050	20	21	1	0.49
LVRC042	97	98	1	0.45		LVRC050	32	33	1	0.55
LVRC042	98	99	1	0.16		LVRC050	44	45	1	2.35
LVRC042	99	100	1	0.15		LVRC050	61	62	1	0.76
LVRC042	100	101	1	0.57		LVRC050	62	63	1	1.1
LVRC042	101	102	1	1.06		LVRC050	63	64	1	0.19
LVRC042	102	103	1	0.44		LVRC050	64	65	1	0.74
LVRC042	107	108	1	0.96		LVRC050	65	66	1	1.33
LVRC042	116	117	1	0.67		LVRC050	104	105	1	0.79
LVRC042	117	118	1	1.33		LVRC050	105	106	1	0.39
LVRC042	118	119	1	1.02		LVRC050	106	107	1	0.96
LVRC042	119	120	1	1.74		LVRC050	107	108	1	0.56
LVRC042	120	121	1	3.87		LVRC050	114	115	1	0.42
LVRC042	121	122	1	2.7		LVRC050	115	116	1	0.05
LVRC042	122	123	1	5.22		LVRC050	116	117	1	1.45
LVRC042	123	124	1	3.18		LVRC050	117	118	1	3.19
LVRC042	124	125	1	0.65		LVRC051	18	19	1	1.39
LVRC042	125	126	1	0.29		LVRC051	73	74	1	1.49
LVRC042	126	127	1	0.21		LVRC051	77	78	1	8.85
LVRC042	127	128	1	0.73		LVRC051	97	98	1	0.43
LVRC042	128	129	1	0.36		LVRC051	101	102	1	0.81
LVRC042	129	130	1	0.18		LVRC051	105	106	1	0.41

Hole ID	From (m)	To (m)	Width (m)	Au (g/t)		Hole ID	From (m)	To (m)	Width (m)	Au (g/t)
LVRC042	130	131	1	1.37		LVRC051	116	117	1	0.67
LVRC043	0	1	1	6.96		LVRC051	121	122	1	0.49
LVRC043	1	2	1	0.78		LVRC051	133	134	1	0.72
LVRC043	2	3	1	0.69		LVRC051	134	135	1	0.55
LVRC043	3	4	1	0.31		LVRC051	135	136	1	0.18
LVRC043	4	5	1	0.36		LVRC051	136	137	1	0.59
LVRC043	5	6	1	0.34		LVRC051	137	138	1	0.87
LVRC043	6	7	1	0.41		LVRC051	138	139	1	1
LVRC043	7	8	1	0.46		LVRC051	139	140	1	0.27
LVRC043	15	16	1	14.75		LVRC051	140	141	1	0.24
LVRC043	16	17	1	0.45		LVRC051	141	142	1	0.05
LVRC043	24	25	1	0.75		LVRC051	142	143	1	0.97
LVRC043	25	26	1	1.48		LVRC051	143	144	1	1.38
LVRC043	26	27	1	3.58		LVRC052	0	1	1	0.5
LVRC043	27	28	1	1.98		LVRC052	1	2	1	0.23
LVRC043	28	29	1	2.43		LVRC052	2	3	1	0.05
LVRC043	29	30	1	2.3		LVRC052	3	4	1	0.57
LVRC043	30	31	1	1.47		LVRC052	16	17	1	4.71
LVRC043	31	32	1	0.72		LVRC052	52	53	1	0.5
LVRC043	32	33	1	0.32		LVRC052	58	59	1	0.78
LVRC043	33	34	1	0.68		LVRC052	59	60	1	0.11
LVRC043	34	35	1	0.21		LVRC052	60	61	1	0.36
LVRC043	35	36	1	0.92		LVRC052	61	62	1	17.45
LVRC043	36	37	1	0.17		LVRC052	62	63	1	2.54
LVRC043	37	38	1	0.03		LVRC052	63	64	1	0.41
LVRC043	38	39	1	1.2		LVRC052	64	65	1	0.21
LVRC043	39	40	1	0.08		LVRC052	65	66	1	2.05
LVRC043	40	41	1	0.57		LVRC052	93	94	1	0.74
LVRC043	41	42	1	0.26		LVRC052	94	95	1	0.59
LVRC043	42	43	1	2.61		LVRC052	95	96	1	0.81
LVRC043	43	44	1	1.38		LVRC052	96	97	1	1.09
LVRC043	44	45	1	0.33		LVRC053	104	105	1	0.67
LVRC043	45	46	1	0.52		LVRC053	117	118	1	1.48
LVRC043	46	47	1	1.19		LVRC053	118	119	1	0.36
LVRC043	47	48	1	0.71		LVRC053	119	120	1	0.19
LVRC043	48	49	1	0.56		LVRC053	120	121	1	0.49
LVRC043	49	50	1	0.47		LVRC053	121	122	1	0.13
LVRC043	50	51	1	0.23		LVRC053	122	123	1	0.04
LVRC043	51	52	1	0.13		LVRC053	123	124	1	0.47
LVRC043	52	53	1	0.41		LVRC053	124	125	1	0.2
LVRC043	53	54	1	1.49		LVRC053	125	126	1	0.16
LVRC043	59	60	1	0.52		LVRC053	126	127	1	0.33
LVRC043	60	61	1	0.5		LVRC053	127	128	1	0.98
LVRC043	61	62	1	0.48		LVRC054	55	56	1	1.59
LVRC043	81	82	1	0.6		LVRC054	56	57	1	1.5
LVRC043	91	92	1	0.77		LVRC054	57	58	1	0.3

Hole ID	From (m)	To (m)	Width (m)	Au (g/t)		Hole ID	From (m)	To (m)	Width (m)	Au (g/t)
LVRC043	92	93	1	0.06		LVRC054	58	59	1	0.28
LVRC043	93	94	1	1.12		LVRC054	59	60	1	0.86
LVRC044	38	39	1	1.16		LVRC054	60	61	1	0.43
LVRC044	67	68	1	1.5		LVRC054	80	81	1	0.84
LVRC044	68	69	1	0.48		LVRC054	81	82	1	4.21
LVRC044	69	70	1	5.51		LVRC054	82	83	1	3.22
LVRC044	78	79	1	2.22		LVRC054	83	84	1	0.41
LVRC044	121	122	1	0.95		LVRC054	84	85	1	0.43
LVRC045	0	1	1	0.25		LVRC054	85	86	1	0.09
LVRC045	1	2	1	1.03		LVRC054	86	87	1	0.44
LVRC045	2	3	1	0.23		LVRC054	87	88	1	0.06
LVRC045	3	4	1	0.78		LVRC054	88	89	1	0.03
LVRC045	11	12	1	0.71		LVRC054	89	90	1	0.51
LVRC045	24	25	1	0.52		LVRC055	80	81	1	0.67
LVRC045	51	52	1	1.14		LVRC055	81	82	1	0.28
LVRC045	52	53	1	0.07		LVRC055	82	83	1	0.6
LVRC045	53	54	1	0.46		LVRC055	83	84	1	0.77
LVRC045	60	61	1	0.92		LVRC056	85	86	1	0.5
LVRC045	61	62	1	0.44		LVRC056	90	91	1	0.55
LVRC046	0	1	1	1.21		LVRC056	91	92	1	1.4
LVRC046	1	2	1	0.85		LVRC056	92	93	1	1.09
LVRC046	23	24	1	0.78		LVRC056	93	94	1	0.45
LVRC046	24	25	1	0.01		LVRC056	143	144	1	0.84
LVRC046	25	26	1	0.01		LVRC056	144	145	1	1.13
LVRC046	26	27	1	1.81		LVRC057	73	74	1	0.43
LVRC046	41	42	1	1.08		LVRC057	79	80	1	0.61
LVRC046	42	43	1	0.15		LVRC059	5	6	1	1.12
LVRC046	43	44	1	0.71		LVRC060	29	30	1	0.51
LVRC047	124	125	1	0.45		LVRC060	47	48	1	3.58
LVRC047	125	126	1	2.17		LVRC060	48	49	1	0.74
LVRC048	10	11	1	1.88		LVRC060	49	50	1	0.44
LVRC048	15	16	1	2.93		LVRC060	50	51	1	2.58
LVRC048	40	41	1	0.42		LVRC061	9	10	1	1.52

## Appendix C – JORC Resource Red Dog (0.5g/t cut-off)

Red Dog			
Classification	Tonnes	Grade	Ounces
Indicated	196,000	1.90	12,000
Inferred	35,000	1.38	1,500
Total	231,000	1.82	13,500

## Appendix D – JORC Table 1

### Section 1. Sampling Techniques and Data

Criteria	Explanation	Commentary
<b>Sampling Techniques</b>	Nature and quality of sampling (e.g., cut channels, random chips, or specific specialised industry standard measurement tools appropriate to the minerals under investigation, such as down hole gamma sondes, or handheld XRF instruments, etc). These examples should not be taken as limiting the broad meaning of sampling. Aspects of the determination of mineralisation that are Material to the Public Report.	<i>Latitude 66 Drilling (LVRC):</i> RC drilling sampled as drill chips. Bulk samples laid out in 1m intervals together with a single 1m cone split calico bag of 2-3kg.
<b>Drilling Techniques</b>	Drill type (e.g., core, reverse circulation, open-hole hammer, rotary air blast, auger, Bangka, sonic, etc) and details (e.g., core diameter, triple or standard tube, depth of diamond tails, face-sampling bit or other type, whether core is oriented and if so, by what method, etc).	RC drilling used a face-sampling hammer.
<b>Drill Sample Recovery</b>	Method of recording and assessing core and chip sample recoveries and results assessed.  Measures taken to maximise sample recovery and ensure representative nature of the samples.  Whether a relationship exists between sample recovery and grade and whether sample bias may have occurred due to preferential loss/gain of fine/coarse material.	Recoveries visually assessed for weight consistency
<b>Logging</b>	Whether core and chip samples have been geologically and geotechnically logged to a level of detail to support appropriate Mineral Resource estimation, mining studies and metallurgical studies.  Whether logging is qualitative or quantitative in nature. Core (or costean, channel, etc) photography.  The total length and percentage of the relevant intersections logged.	Chips were visually inspected and logged to record lithology, weathering, alteration, mineralisation, veining and structure.  All drilling logged in detail. Qualitative: Lithology, alteration, mineralisation etc.  Entire length of hole is logged.
<b>Sub-Sampling techniques and sample preparation</b>	If core, whether cut or sawn and whether quarter, half or all core taken.  If non-core, whether riffled, tube sampled, rotary split, etc and whether sampled wet or dry.  For all sample types, the nature, quality and appropriateness of the sample preparation technique.  Quality control procedures adopted for all sub-sampling stages to maximise representativity of samples.  Measures taken to ensure that the sampling is representative of the in-situ material collected, including for instance results for field duplicate/second-half sampling.	No diamond core was drilled  <i>Latitude 66 Drilling (LVRC):</i> For RC drilling, samples were split from dry, 1m bulk sample via a cone splitter directly from the cyclone. Splitter regularly checked for cleanliness and correct operation.  Sample preparation included LM5 pulverising to 85% passing at - 75um. This is appropriate for the style of mineralisation.  <i>Latitude 66 Drilling (LVRC):</i> QAQC procedure consisted of insertion of suitable certified reference material and blank material at a frequency rate of 1:25. No significant bias noted. The sample sizes are believed to be appropriate to correctly represent the style and thickness of mineralization.  <i>Latitude 66 Drilling (LVRC):</i> Field duplicates were taken on a 1:20 basis.

<b>Quality of assay data and laboratory tests</b>	<p>The nature, quality and appropriateness of the assaying and laboratory procedures used and whether the technique is considered partial or total.</p>	<p><i>Latitude 66 Drilling (LVRC):</i> All samples have been analysed by 25g Fire Assay with an AAS finish which is industry standard. The gold analysis is considered a total digest. The nature and quality of sampling procedures and analyses adopted are of industry standard.</p>
	<p>For geophysical tools, spectrometers, handheld XRF instruments, etc, the parameters used in determining the analysis including instrument make and model, reading times, calibrations factors applied and their derivation, etc.</p>	<p>No geophysical tools used. Handheld magnetic susceptibility was taken on a metre basis using at KT-10 instrument.</p>
	<p>Nature of quality control procedures adopted (e.g., standards, blanks, duplicates, external laboratory checks) and whether acceptable levels of accuracy (e.g., lack of bias) and precision have been established.</p>	<p><i>Latitude 66 Drilling (LVRC):</i> QAQC procedure consisted of insertion of suitable certified reference material and blank material at a frequency rate of 1:25. The sample sizes are believed to be appropriate to correctly represent the style and thickness of mineralization. Duplicates were taken at a frequency of 1:20</p>
<b>Verification of sampling and assaying</b>	<p>The verification of significant intersections by either independent or alternative company personnel.</p>	<p><i>Latitude 66 Drilling (LVRC):</i> Visible verification of RC chips is made by senior staff members.</p>
	<p>The use of twinned holes.</p>	<p><i>Latitude 66 Drilling (LVRC):</i> No holes were twinned, however the continuity of mineralisation between holes suggests the historical information is spatially located in the correct position.</p>
	<p>Documentation of primary data, data entry procedures, data verification, data storage (physical and electronic) protocols.</p>	<p>Data logged electronically on site with automated validation procedures and data entry checks. Data transferred to company database on completion of program.</p>
	<p>Discuss any adjustment to assay data.</p>	<p>No adjustments to the assay data have been made</p>
<b>Location of data points</b>	<p>Accuracy and quality of surveys used to locate drill holes (collar and down-hole surveys), trenches, mine workings and other locations used in Mineral Resource estimation.</p>	<p>Holes marked out prior to drilling using a handheld GPS (+/- 3m).</p>
	<p>Specification of the grid system used</p>	<p>MGA94 zone 51.</p>
<b>Location of data points</b>	<p>Quality and adequacy of topographic control</p>	<p>Elevation taken from a Lone Star drone survey (+/- 0.05m) completed by Scott Wilson</p>
<b>Data spacing and distribution</b>	<p>Data spacing for reporting of Exploration Results.</p>	<p>Data spacing at Tin Dog is at &gt; 20m x 40m, surrounded by 40m x 40m and 80 x 80m away from mineralised area. The Red Dog Resource was completed on 5m x 5m centres. Extensional drilling was completed between 40-80m away from known mineralisation.</p>
	<p>Whether the data spacing, and distribution is sufficient to establish the degree of geological and grade continuity appropriate for the Mineral Resource and Ore Reserve estimation procedure(s) and classifications applied.</p>	<p>Sample spacing is sufficient to establish geological and grade continuity. Appropriate classification has been applied to the Resource.</p>
	<p>Whether sample compositing has been applied.</p>	<p>Samples have been composited for reporting using a 0.4g/t Au lower cut, with a maximum 2m internal dilution allowable.</p>
<b>Orientation of data in relation to geological structure</b>	<p>Whether the orientation of sampling achieves unbiased sampling of possible structures and the extent to which this is known, considering the deposit type.</p>	<p><i>Latitude 66 Drilling (LVRC):</i> RC drilling was predominantly vertical and tested a relatively flat mineralised target (~30 degrees). Mineralised widths are therefore over-estimated by approximately 10%.</p>
	<p>If the relationship between the drilling orientation and the orientation of key mineralised structures is considered to have introduced a sampling bias, this should be assessed and reported if material.</p>	<p><i>Latitude 66 Drilling (LVRC):</i> No bias, apart from that mentioned above is thought to have occurred.</p>

<b>Sample Security</b>	The measures taken to ensure sample security.	<i>Latitude 66 Drilling (LVRC):</i> Samples transported by Latitude 66 staff to the assay laboratory in Kalgoorlie.
<b>Audits or reviews</b>	The results of any audits or reviews of sampling techniques and data.  Aspects of the determination of mineralisation that are Material to the Public Report.	The competent person has reviewed the assay techniques, logging and spatial continuity of the mineralisation and has concluded the results have been validated appropriately.  Nothing further to add other than a site visit has been completed to confirm location of drillholes and visual observation of mineralisation.

## Section 2 Reporting of Exploration Results

(Criteria listed in the preceding section also apply to this section.)

Criteria	JORC Code explanation	Commentary															
<b>Mineral tenement and land tenure status</b>	Type, reference name/number, location and ownership including agreements or material issues with third parties such as joint ventures, partnerships, overriding royalties, native title interests, historical sites, wilderness or national park and environmental settings.	<table border="1"> <thead> <tr> <th>Tenement ID</th> <th>Holder</th> <th>Status</th> </tr> </thead> <tbody> <tr> <td>M39/1099</td> <td>Scott Wilson</td> <td>Granted</td> </tr> <tr> <td>M39/1111</td> <td>Scott Wilson</td> <td>Granted</td> </tr> <tr> <td>M39/38</td> <td>Scott Wilson</td> <td>Granted</td> </tr> <tr> <td>M39/1100</td> <td>Scott Wilson</td> <td>Granted</td> </tr> </tbody> </table> <p>A gross smelter royalty payment exists for M39/38, M39/1099 and M39/1100 including total production milestones of:</p> <ul style="list-style-type: none"> <li>- 10,000 – 50,000oz gold: 1.5% gross smelter royalty</li> <li>- &gt;50,000oz gold: 1% gross smelter royalty</li> <li>- N.B. 12,704oz of gold have already been produced from the tenements.</li> </ul>	Tenement ID	Holder	Status	M39/1099	Scott Wilson	Granted	M39/1111	Scott Wilson	Granted	M39/38	Scott Wilson	Granted	M39/1100	Scott Wilson	Granted
Tenement ID	Holder	Status															
M39/1099	Scott Wilson	Granted															
M39/1111	Scott Wilson	Granted															
M39/38	Scott Wilson	Granted															
M39/1100	Scott Wilson	Granted															
<b>Mineral tenement and land tenure status</b>	The security of the tenure held at the time of reporting along with any known impediments to obtaining a licence to operate in the area.	The granted tenements are in good standing.															
<b>Exploration done by other parties</b>	Acknowledgment and appraisal of exploration by other parties.	Previous explorers include CSR, Pennzoil-Van JV, Shell Company Australia, Billiton Australia (1985-1990), Billiton0Newmont Australia JV (1990-1992), M Hodges – Welcom Stranger mining (1993), M. Hodges (1994-1998), Goldfields Kalgoorlie (1999), Sons of Gwalia (2000-2003), Wilson (2004-2011), Saracen Resources (2021-2015), M. Hodges (2015-2017), Matsa Resources (2017-2019), Wilson (2019-2025).															
<b>Geology</b>	Deposit type, geological setting and style of mineralisation.	The deposit type being explored for is orogenic syntectonic gold mineralisation. Gold is associated with major NW striking shear zones and flat lying localised shearing and alteration.															
<b>Drill hole Information</b>	A summary of all information material to the understanding of the exploration results including a tabulation of the following information for all Material drill holes: <ul style="list-style-type: none"> <li>• easting and northing of the drill hole collar</li> <li>• elevation or RL (Reduced Level – elevation above sea level in metres) of the drill hole collar</li> <li>• dip and azimuth of the hole.</li> <li>• down hole length and interception depth</li> <li>• hole length.</li> </ul> <p>If the exclusion of this information is justified on the basis that the information is not Material and this</p>	Hole details can be found in Appendix A.															

Criteria	JORC Code explanation	Commentary
	<p>exclusion does not detract from the understanding of the report, the Competent Person should clearly explain why this is the case.</p>	
<b>Data aggregation methods</b>	<p>In reporting Exploration Results, weighting averaging techniques, maximum and/or minimum grade truncations (e.g., cutting of high grades) and cut-off grades are usually Material and should be stated.</p> <p>Where aggregate intercepts incorporate short lengths of high-grade results and longer lengths of low-grade results, the procedure used for such aggregation should be stated and some typical examples of such aggregations should be shown in detail.</p> <p>The assumptions used for any reporting of metal equivalent values should be clearly stated.</p>	<p>The metal concentration averages of mineralised intercepts presented in this report are sample length weighted averages of sample grades (&gt;0.4g/t Au) with a maximum internal dilution of 2 samples.</p> <p>No metal equivalents are used.</p>
<b>Relationship between mineralisation widths and intercept lengths</b>	<p>These relationships are particularly important in the reporting of Exploration Results.</p> <p>If the geometry of the mineralisation with respect to the drill hole angle is known, its nature should be reported.</p> <p>If it is not known and only the down hole lengths are reported, there should be a clear statement to this effect (e.g., 'down hole length, true width not known').</p>	<p>All intercepts reported relate to downhole depth. Given the mineralised unit is flat lying, it is assumed the reported intervals are close to being true width.</p>
<b>Diagrams</b>	<p>Appropriate maps and sections (with scales) and tabulations of intercepts should be included for any significant discovery being reported. These should include, but not be limited to a plan view of drill hole collar locations and appropriate sectional views.</p>	<p>Maps, sections and intercepts are reported in this report.</p>
<b>Balanced reporting</b>	<p>Where comprehensive reporting of all Exploration Results is not practicable, representative reporting of both low and high grades and/or widths should be practiced avoiding misleading reporting of Exploration Results.</p>	<p>Significant intersections are reported for gold &gt;0.4 g/t cut-off grade with no top cut. A maximum of 2 samples of internal dilution were included where applicable.</p> <p>All results considered significant to the relevant document are reported.</p>
<b>Other substantive exploration data</b>	<p>Other exploration data, if meaningful and material, should be reported including (but not limited to): geological observations; geophysical survey results; geochemical survey results; bulk samples – size and method of treatment; metallurgical test results; bulk density, groundwater, geotechnical and rock characteristics; potential deleterious or contaminating substances.</p>	<p>All exploration data has been reported.</p>
<b>Further work</b>	<p>The nature and scale of planned further work (e.g., tests for lateral extensions or depth extensions or large-scale step-out drilling).</p> <p>Diagrams clearly highlighting the areas of possible extensions, including the main geological interpretations and future drilling areas, provided this information is not commercially sensitive.</p>	<p>Forward activities include a further phase of drilling prior to an estimation of a Mineral Resource for both the Red Dog and Tin Dog areas.</p>