

29 April 2026

LITHIUM PLUS MINERALS SIGNS NON-BINDING HEADS OF AGREEMENT WITH DARWIN PORT OPERATIONS PTY LTD

HIGHLIGHTS

- + Another positive step in the progress of Lithium Plus Minerals' (ASX: LPM) Bynoe Lithium Project.
- + Positive discussions with Darwin Port.
- + A non-binding Heads of Agreement was recently signed setting out the principles for more detailed engagement.
- + Ideal infrastructure and space available for exporting Lithium from Australia to the key potential customers.
- + Only 70km by (mostly) sealed road from the Project to Darwin Port.
- + Ideal shipping options and flexibility available at Darwin Port with excellent operators.

Commenting on the milestone CEO Andrew Haythorpe, said:

"This is another step toward the Scoping Study the company is now undertaking. This study has multiple aims – importantly to de-risk the Project, improve the speed to production and reduce feasibility, capital and operating costs for the Lei Lithium project and improve value for its shareholders."

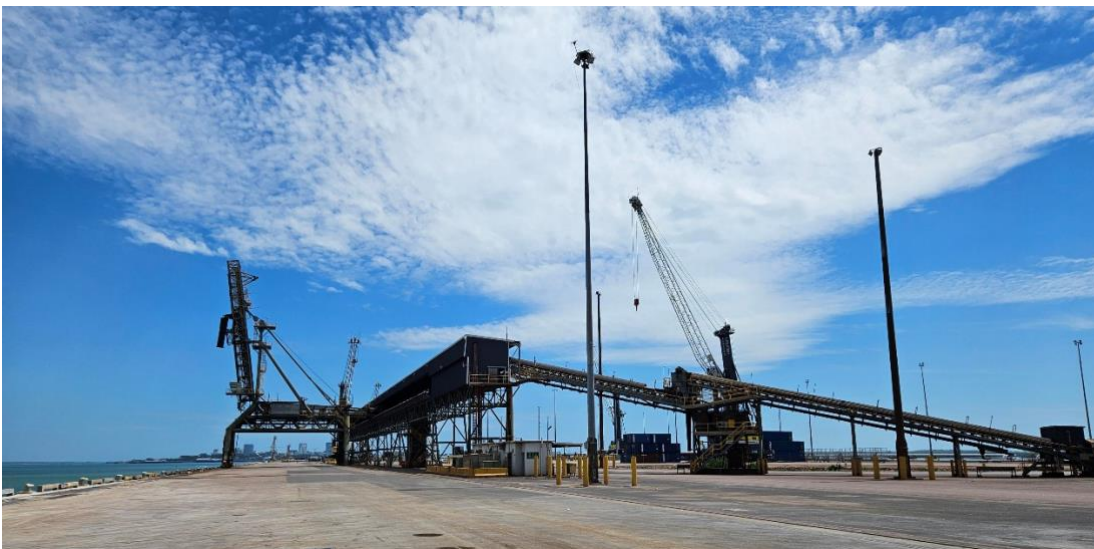


Figure 1. Bulk loading facility Darwin Port (LPM CEO site Visit Friday 17th April 2026)

BACKGROUND

A non-binding Heads of Agreement (**HOA**) has been signed by Darwin Port Operations Pty Ltd and Lithium Plus Minerals Ltd ABN 88 653 574 219 (Lithium Plus).

Lithium Plus is advancing a scoping study aimed at exporting lithium products from Darwin Port.

To facilitate this project Lithium Plus has entered into discussions with Darwin Port in relation to:

- a) a potential lease of port Land for the storage of lithium products; and
- b) use of the facilities owned by Darwin Port, to enable Lithium Plus to carry out its export operations.

This HOA is intended to form the basis of commercial discussions between the parties in relation to Lithium Plus's project and the potential export of lithium products from the port.

ENDS

This announcement has been authorised for release by the Board of Lithium Plus.

Contact:

Mr Andrew Haythorpe

CEO

+61 407 737 973

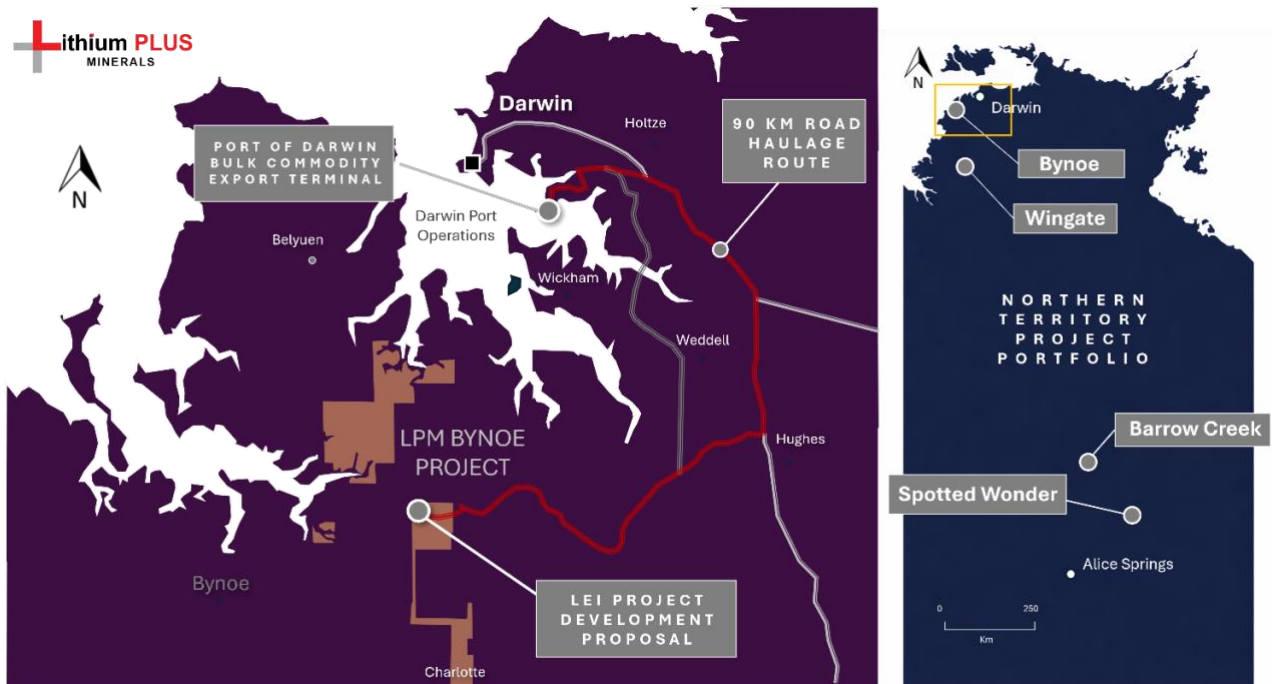
andrew@lithiumplus.com.au

Mr Simon Kidston

Non-Executive Director

+61 0414 785 009

skidston@lithiumplus.com.au



About Lithium Plus Minerals

Lithium Plus Minerals Limited (ASX: LPM) is an Australian Lithium exploration company with 23 tenements in the Northern Territory grouped into the following projects:

Bynoe Lithium Project (100% LPM)

Situated on the Cox Peninsula, 45 km south of Darwin, on the northern end of the Litchfield Pegmatite Belt, with 11 granted tenements covering 297 km². Geologically centred around the Bynoe Pegmatite Field, the tenements share a border with Core Lithium's Finnis mine development. Significant lithium mineralisation was discovered at Lei in 2017 within the north-northeast trending spodumene bearing pegmatites. Current drill ready targets are Lei, SW Cai, Cai and Perseverance.

Wingate Project (100% LPM)

Located 150 km south of Darwin. LPM hold three granted tenements EL31132, EL34006 and EL34007 covering 485 sq km. The tenements cover the Wingate Mountains Pegmatite District, the southern part of the Litchfield Pegmatite Belt. It contains the known presence of pegmatites with little exploration and minor historical production of tin. Historical gold workings (Fletcher's Gully) are also present.

Arunta Projects (100% LPM)

Barrow Creek

Located in the Northern Arunta pegmatite province, 300 km north of Alice Springs. Historic tin and tantalum production and the presence of spodumene in nearby Anningie Pegmatite field suggest lithium potential.

Spotted Wonder

Located approx. 200 km north-north-east of Alice Springs with proven lithium and Beryllium mineralisation, with amblygonite present in the Delmore Pegmatite