

March 2026 Quarterly Activities Report

Green River Lithium Project, Utah, USA

- Mt Fuel–Skyline Geyser Well: Completed modified drilling program, intersecting the Mississippian target horizon at 9,189 ft with drilling fluid samples collected for assay to support a possible JORC Resource expansion.
- Battery Grade Lithium Carbonate: Produced EV battery grade lithium carbonate at 99.4% purity from Green River brine, confirmed by SGS North America.
- Offtake: Delivered high-purity lithium chloride sample to Nusano, which has commenced a materials evaluation program under the non-binding MOU.
- Cooperation and Community: POSCO completed its technical evaluation of the DLE Demonstration Plant; subsequent to quarter end, POSCO rescheduled its investment approval decision due to global uncertainty while reaffirming commitment to the project.
- Engineering Studies: Evaluating DLE and downstream process proposals from technology providers through third-party engineering studies, with initial evaluation expected in coming months.

Yellow Cat Vanadium/Uranium Project

- Commenced and subsequently completed a 23-hole aircore drilling program confirming mineralisation continues along strike of the known historical uranium and vanadium mine sites, with samples sent for uranium, vanadium and critical mineral assay.

Western Australia

- Continued technical and planning work building on the maiden JORC (2012) Mineral Resource at the Surprise Deposit, with future drilling programs designed and heritage agreement negotiations ongoing for ELA66/131.

Corporate

- Strong balance sheet with \$9.5 million cash on hand at the end of the quarter.

Diversified minerals development company Anson Resources Limited (ASX: **ASN**) (“**Anson Resources**” or “**the Company**”) is pleased to provide the following update on its activities for the period ended 31 March 2026.

Anson has a portfolio of minerals projects in demand-driven commodities, led by its core lithium assets in the Paradox Basin in Utah, USA. The Paradox Basin is a globally significant lithium location. The Company through its 100% owned USA subsidiaries, A1 Lithium and Blackstone Minerals NV LLC, is working to develop the region into one of the largest lithium resources in North America.

Green River Lithium Project, Utah

Anson has completed a maiden JORC Mineral Resource estimate for the Mississippian Leadville Limestone Formation at its Green River Lithium Project in south-eastern Utah, USA (refer ASX announcement dated 13 June 2025). The Mineral Resource estimate (Table 1 and Figure 1) is derived solely from data obtained from drilling of the Bosydaba #1 well (refer ASX announcements dated 22 April 2024 and 20 May 2024).

It is anticipated that the JORC Mineral Resource will be expanded by the re-entry program of the Mt Fuel-Skyline Geyser 1-25 well which was previously approved by both the Department of the Interior, Bureau of Land Management (BLM), and the Utah Division of Oil, Gas and Mining (UDOGM) see ASX Announcements 12 May 2025 and 15 May 2025.

Category	Aquifer Volume (km ³)	Brine Volume (km ³)	Average Li (mg/l)	Porosity (%)	Brine in Pore Spaces (%)	Lithium (t)	Contained LCE (t)
Indicated	0.645	0.039	93.5	6	100	4,000	19,000
Inferred	2.829	0.170	93.5	6	100	16,000	84,000
TOTAL	3.474	0.209	93.5	6	100	20,000	103,000

Table 1: The Green River Lithium Project’s maiden JORC Mineral Resource.

During the quarter, Anson intersected the Mississippian target horizon at 9,189 ft in the sidetrack drilling program at the Mt Fuel–Skyline Geyser 1-25 well, located 12km south of the Bosydaba #1 well (see ASX announcement 6 February 2026). An inflow of fluids was recorded and chlorides were detected while drilling through the top of the Mississippian Units, with samples collected and fluid separated from the oil-based drilling muds for assay. Historical assay results from the Mt Fuel–Skyline Geyser well confirm a similar geochemistry to that of the Bosydaba #1 well, with comparable salt concentrations across magnesium, potassium, calcium, sodium and chloride. The aim of the program is to confirm lithium-rich brines are located in the target horizons, which would support an increase to the estimated JORC Resource by converting the large Exploration Target into Indicated and Inferred Resources.

Anson successfully produced electric vehicle battery grade lithium carbonate at 99.4% purity from Green River Lithium Project brine (see ASX announcement 9 February 2026). Lithium eluate produced during DLE test work at the Green River Sample Demonstration Plant was shipped to Anson's Lithium Innovation Center in Florida and processed using the Company's proprietary downstream flowsheet to remove remaining impurities. Purity was confirmed by SGS North America Inc. using acid-based titration. The downstream flowsheet utilised for Green River eluate is considered to be more cost effective, using less electricity, than the process previously developed for the Paradox Lithium Project brines. The Company is evaluating process technical and financial proposals from technology providers for both the DLE and downstream steps through engineering studies being conducted by a third-party consulting firm, with an initial evaluation of options expected in coming months.

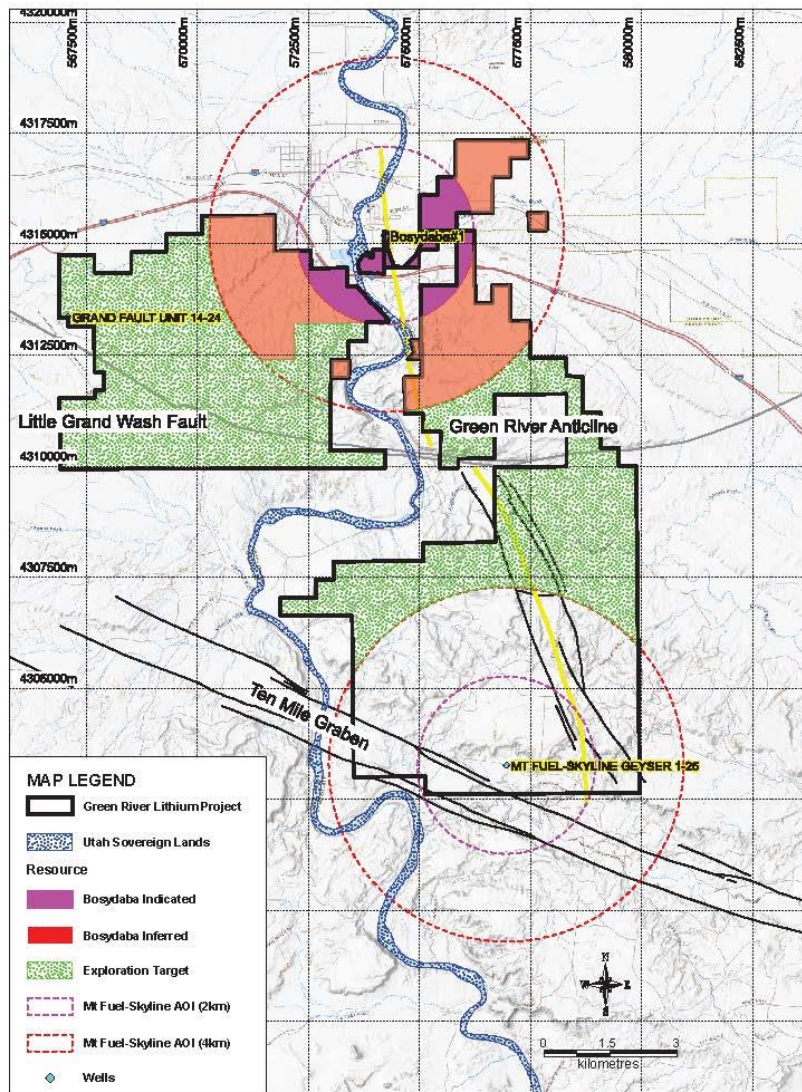


Figure 1: Plan showing the Indicated and Inferred Mineral Resource areas and the Area of Influence surrounding the Mt Fuel-Skyline well.

Paradox Lithium Project, Utah

During the quarter, Anson continued planning and technical work for the re-entry of the Mineral Canyon Fed 1-3 well as part of its exploration drilling program at the Paradox Lithium Project. The Mineral Canyon Fed 1-3 well is located in the "Big Flat" area, which is known from historical drilling to contain a very large brine reservoir within the Mississippian units. Anson's 100% owned subsidiary, A1 Lithium, had previously received approval from the U.S. Department of the Interior, Bureau of Land Management for its Plan of Operation to commence the western expansion Mineral Resource drilling program at Paradox. The approved program includes the sampling of the thick Mississippian units and the Pennsylvanian clastic horizons, which, if executed, is expected to deliver a significant increase to the Project's existing JORC Mineral Resource of 1.5Mt of Lithium Carbonate Equivalent and 7.6Mt of Bromine (see ASX announcement 16 October 2023).

The Paradox Lithium Project remains a strategically important asset within Anson's portfolio, with the existing JORC Mineral Resource comprising 4,550 MI³ of brine at 123 ppm lithium in the Indicated category and 16,584 MI³ at 109 ppm lithium in the Inferred category (see Table 2). The western expansion strategy is designed to extend the resource footprint westward from the existing Indicated and Inferred Resource areas along the Cane Creek Anticline, targeting the same geological horizons that have returned consistently elevated lithium and bromine concentrations in prior drilling. Detailed planning work during the quarter focused on well re-entry logistics, regulatory compliance requirements and scheduling of the drilling program to align with the Company's broader exploration timetable across its Utah project portfolio.

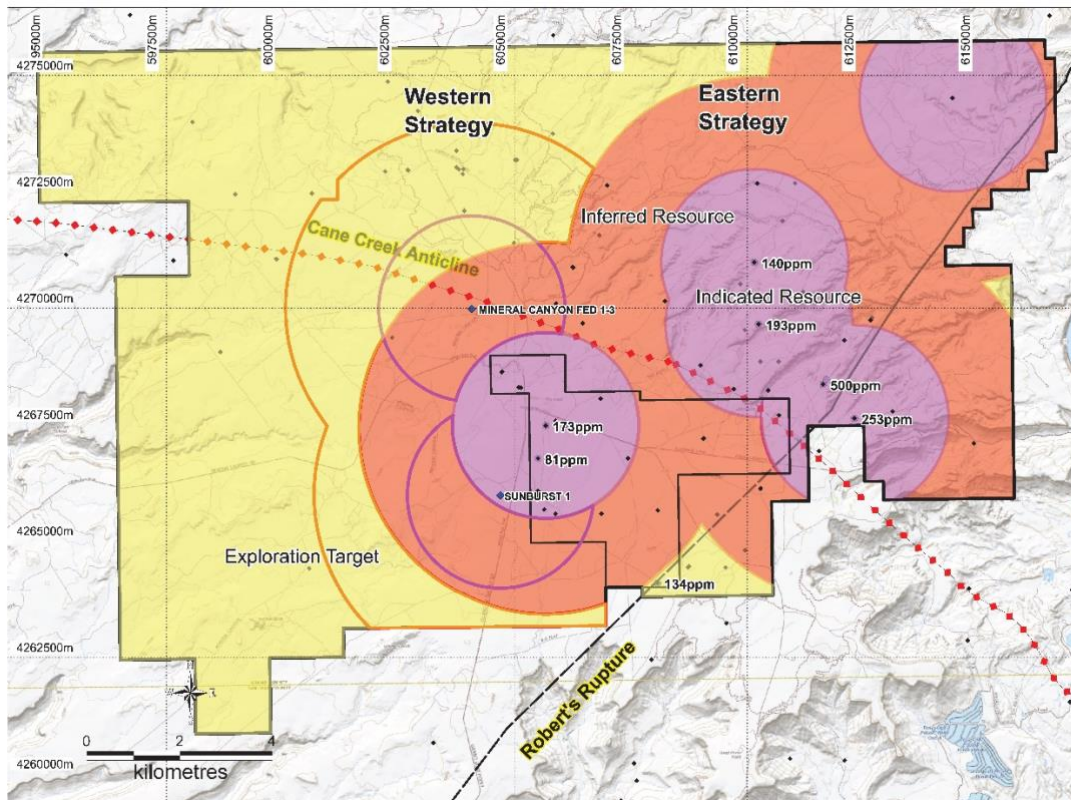


Figure 2: Plan showing proposed Areas of Influence (AOI) for the Western Strategy drilling program at Paradox Project.

Category	Brine Volume (MI ³)	Brine Tonnes (Mt)	Li (ppm)	Br (ppm)	Contained ('000t) ¹	
					LCE	Br ₂
Indicated	4,550	562	123	3,398	367	1,910
Inferred	16,584	1,954	109	2,915	1,138	6,699
Resource	21,134	2,516	112	3,023	1,504	7,609

Table 2: Paradox Lithium Project Total JORC Mineral Resource estimate.

Anson began planning the plugging and abandoning (P&A) of the Skyline Unit 1 and Long Canyon Unit 2 wells. The P&A of these wells will result in the return of the bonds that were required to carry out the drilling programs.

Yellow Cat Uranium / Vanadium Project

Yellow Cat Uranium Vanadium Project (“**Yellow Cat**”) is located 30km north of Moab, in the Thompson District, Grand County Utah., USA. There are two separate areas: the Yellow Cat and the Yellow Cat West claims.

During the quarter, Anson commenced its initial exploration drilling program at the Yellow Cat Uranium Vanadium Project through its 100% owned subsidiary UV1 Minerals LLC (see ASX announcement 24 March 2026). The aircore drilling program targeted 24 locations on the eastern block of the project area, along strike of the historical mineral resource, with the objective of confirming that uranium and vanadium mineralisation extends for 2,500m between the Windy Point & McCoy Group mine sites and the Cactus Rat & Mineral Treasure mines. The Company’s previous exploration sampling programs had yielded values of up to 10.33% U_3O_8 and 25.6% V_2O_5 from those mine sites (see ASX announcements 15 October 2020 and 21 September 2021).



Figure 3: Plan showing the proposed drillhole locations to be carried out west of the “Windy Point” mines.



Figure 4: Plan showing the proposed drillhole locations to be carried out east of the “Cactus Rat” mines.

Subsequent to the end of the quarter, the Company announced completion of the drilling program (see ASX announcement 8 April 2026). A total of 23 holes were drilled, with 0.3m (1 ft) samples collected through visually mineralised zones and 0.9m (3 ft) composite samples over the remaining intervals. The program confirmed that mineralisation continues along strike of the historical mine site locations, with thick mineralised zones of up to 2m (6 ft) visually identified 400m west of the McCoy Group. Uranium and vanadium were detected in interpreted mineralised intervals using a Ludlum Measurements Model 3 Survey Meter, consistently returning values of 0.5 to 2 mR/hr. All samples have been sent to a certified laboratory in Nevada for uranium, vanadium and other associated critical mineral assay, including gallium and rare earth elements, with results expected within four weeks. Following receipt of assay results, an infill drilling program will be designed to prove up a mineral resource between the historical mine sites.

As previously noted in prior quarters, a review of historical drilling programs at Yellow Cat has identified high-grade uranium and vanadium mineralisation results. Mineralised intercepts from these historic drill holes ranging up to 7ft (~2.1m) in thickness, including 0.3 ft (~0.1m) at 3.75% U₃O₈ and 3.34% V₂O₅ (see ASX announcements, 22 June 2020, 30 June 2020 and 4 February 2026) in Hole ID 533. The location of selected historical drillholes is shown in Figure 5 and Table 3 contains selected higher historical drilling assay interval results based on intervals >0.3 ft and >3,000ppm U₃O₈ within the Anson claims. For a more detailed selection of assay data see Table 5. It must be noted, these intervals are not aggregated or weighted, just assay results for the sampled interval.

Hole ID	Block	From	To	Interval	U ₃ O ₈ (ppm)	V ₂ O ₅ (%)
533	C	74.6	74.9	0.3	37,500	3.34
929	K	56.7	58.1	1.4	9,700	1.99
W135	T	51.2	51.9	0.7	6,700	3.26
W340	Y	2	3.5	1.5	13,300	2.37

Table 3: Select historic drillhole results from the Yellow Cat claims.

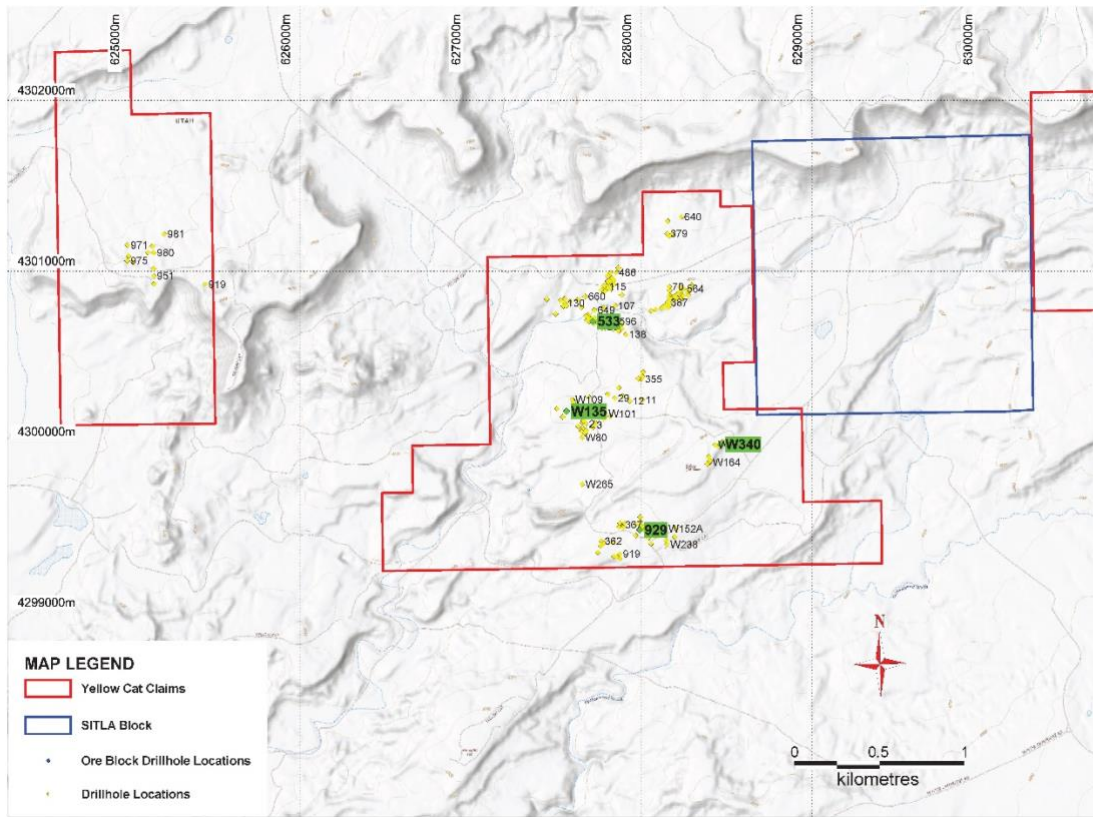


Figure 5: Location plan of the historical drillholes included in the historical resource.



Figure 6: Drilling Rig at the Yellow Cat project.

The Ajana Project

The Ajana Project is in Northampton, Western Australia, a proven and established mining province for zinc, lead and silver. The Project is adjacent to the Northwest Coastal Highway and 130km north of Geraldton. Historical exploration in the area has concentrated on the search for zinc and lead deposits. The prospective ground on tenements E66/89, E66/94 and ELA66,131 are located within the Northampton Metamorphic Complex and is dominated by north-northeast trending dolerite dyke intrusive and north-northwest trending cross-cutting faults.

The Ajana Project contained several historic zinc, copper, lead and silver producing mines that date back to the 1850's and numerous shallow workings across the entire project area.

No field work was carried out at Ajana during the quarter. Anson had previously announced a maiden JORC Code (2012) Mineral Resource Estimate (MRE) at its Surprise Deposit at the Ajana Project (see *ASX announcement 8 October 2024*).

Category	Grade			Metal			
	Tonnes	Pb (%)	Zn (%)	Ag (g/t)	Pb (t)	Zn (t)	Ag (oz)
Inferred	103,000	2.7	0.45	1.3	2,781	464	4,723

Table 4: The Surprise Deposit MRE, JORC 2012, at a 1% Pb cut cutoff grade.

The MRE is restricted to the recent shallow drilling program carried out by Anson in September 2024 quarter, see Table 4. The mineralisation is open along strike, both north and south, and down dip, see Figure 6.

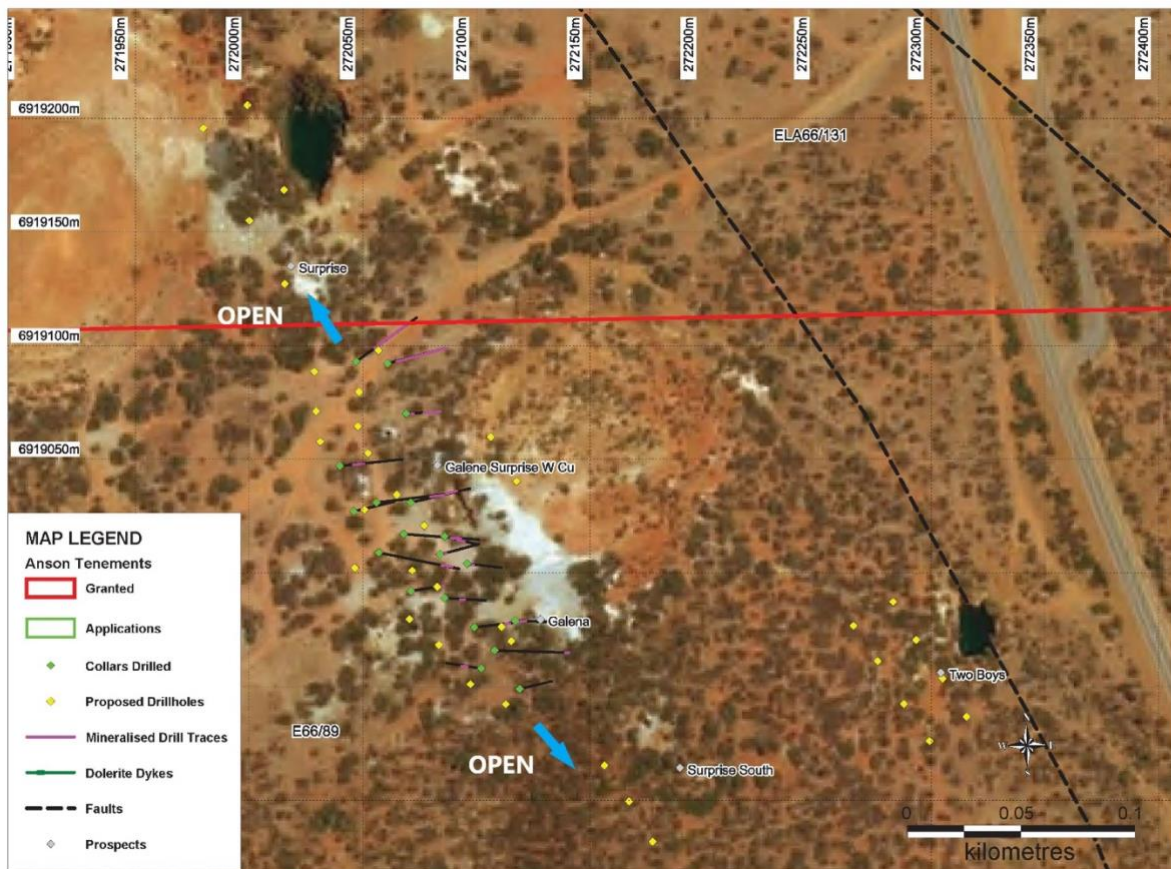


Figure 7: Plan showing the Surprise drillholes used in JORC calculation and the open mineralisation.

During the quarter drill rig availability and quotes were obtained for exploration drilling programs to be conducted at the Ethel Maude, Geraldine and Surprise Prospects. In addition, access routes and probable clearing of the drillhole locations were determined.

The drilling will be targeting zinc-lead-silver mineralisation to increase the mineral resource at Surprise and prove up a resource at Ethel Maude. In addition, the assay results for the critical minerals - gallium (Ga), indium (In) and germanium (Ge) should enable them to be included in future JORC mineral resource upgrades.

Anson also plans to target the Geraldine Prospect which has recorded high grade Zn, Pb, Cu, Ga, and Ba rockchip assays, *see ASX Announcement 22 August 2024*. The high- grade mineralisation is located along the dolerite dykes or the cross-cutting faults which correlates with the mineralisation at Ethel Maude, see Figure 8.

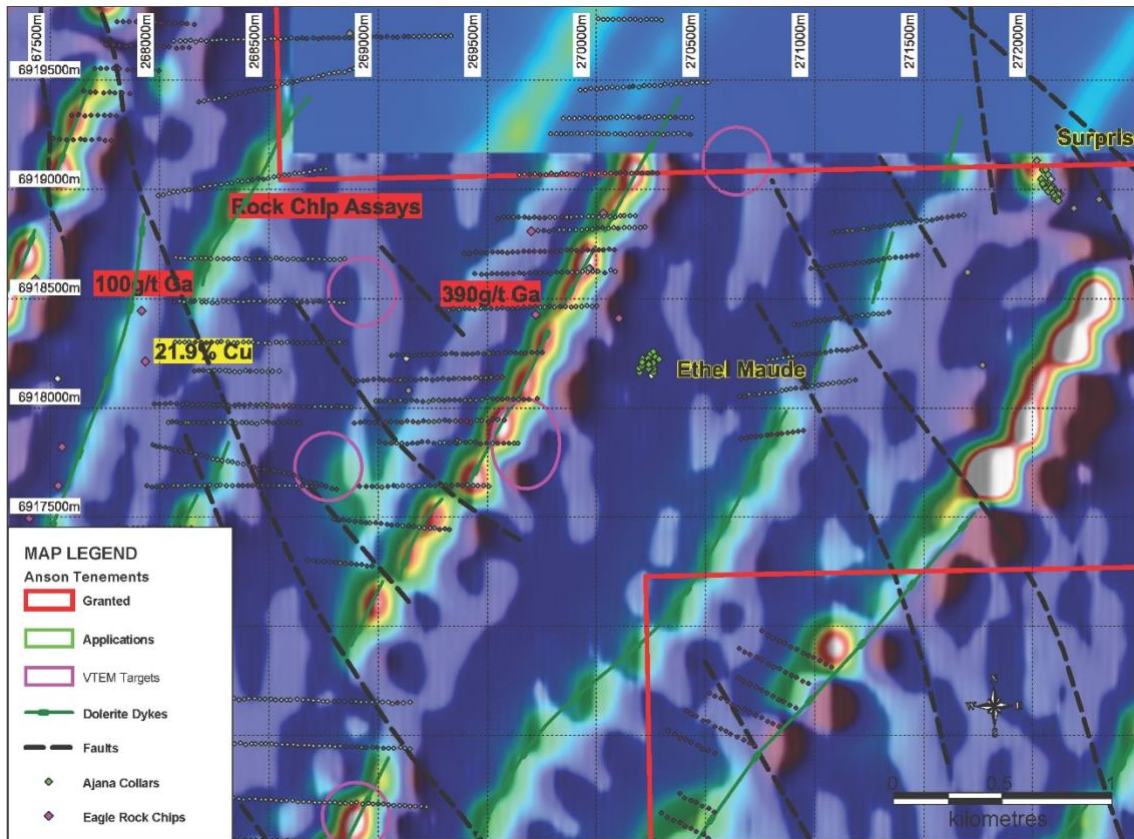


Figure 8: Plan showing historical critical mineral rock chip results and soil sampling programs.

During the quarter Anson has also continued to negotiate a Heritage Agreement for the new tenement application, ELA66/131.

Bull Nickel-Copper-PGE Project

The Bull Project, E70/5420, is located only 35km from Perth abutting Chalice Mining Limited’s (Chalice) (ASX: CHN) tenements and is 20km south-west along strike of Chalice’s high-grade Julimar Ni- Cu-PGE discovery. Anson is still awaiting the granting of ELA70/5619 tenement that abuts the Bull Project area to the south.

No work was carried out on the Bull Project during the quarter as the Company was concentrating on progressing its Tier 1 assets in the USA.

Hooley Well Cobalt-Nickel Laterite Project

The Hooley Well Nickel-Cobalt Laterite Project is located 800km north of Perth and 300km north-east of Geraldton in Western Australia consisting of three tenements E9/2218, E9/2219 and E9/2462. Tenements E9/2218 and E9/2219 contain historical shallow drilling which has intersected nickel and cobalt laterites. There are also possible primary nickel sulphides (identified by IP response) at depth.

No work on site was carried out at Hooley Well during the quarter. Costings and timelines were being calculated to complete heritage surveys over the most prospective areas of the Hooley Well project after signing a Heritage Agreement between Anson Resources Ltd and the Wajarri Yamaji aboriginal corporation. Once the surveys are completed, planned drilling programs can be carried out.

Corporate

Commercial Work:

112,500,019 ASN options from the November capital raise were issued and quoted on the ASX as ASNO class.

During the quarter, Anson continued to advance cooperation with POSCO Holdings Inc. ("POSCO") on the planned DLE Demonstration Plant at Green River. POSCO successfully completed its technical evaluation of the project, including brine testing and site design for the demonstration plant, further validating the technical fundamentals of the Green River lithium resource.

Subsequent to the end of the quarter, the Company announced that POSCO had rescheduled its internal investment approval process for the demonstration plant due to current global uncertainty (see ASX announcement 1 April 2026). Importantly, the rescheduling is not a cancellation. POSCO has reaffirmed its strong commitment to the project and to cooperation with Anson, with the postponement of the investment decision solely attributable to broader global market conditions rather than any change in project fundamentals.

Throughout the quarter, senior-level engagement and technical collaboration between the parties remained strong and ongoing:

A senior POSCO executive conducted a site visit to the Green River project in March, demonstrating enduring commitment to the partnership.

Continued engineering collaboration across multiple workstreams, with POSCO completing its technical assessment highlighting the strategic importance of the project.

Ongoing strategic alignment discussions between both parties, with the Green River Demonstration Plant remaining a key component of POSCO Group's battery materials strategy to secure long-term North American lithium supply.

Expenditure during the quarter:

The Appendix 5B details the expenditure during the quarter. Administration and corporate costs were \$742k. In accordance with Listing Rule 5.3.1, the Company reports that there was \$2,753k exploration and evaluation costs which were predominantly expended on the Paradox Basin Projects. Payments to related parties at section 6.1 of the Appendix 5B of \$420k relate to KMP and director fees/expenses, salaries and superannuation. There were no mining production and development activities during the quarter.

This report has been authorised for release by the Executive Chairman and CEO.

For further information please contact:

Bruce Richardson

Executive Chairman and CEO
E: Info@Ansonresources.com
Ph: +61 478 491 355

Will Maze

Head of Investor Relations
E: Investors@Ansonresources.com
Ph: + 61 7 3132 7990

www.Ansonresources.com

Follow us on X (twitter) [@Anson_IR](https://twitter.com/Anson_IR)

Forward Looking Statements

This report contains forward-looking statements which are identified by words such as 'may', 'could', 'believes', 'estimates', 'targets', 'expects', or 'intends' and other similar words that involve risks and uncertainties. These statements are based on an assessment of present economic and operating conditions, and on a number of assumptions regarding future events and actions that, as at the date of this report, are expected to take place.

Reasonable Grounds and Risk Factors

Anson Resources (the Company) considers that the forward-looking statements contained in this report are based on reasonable grounds; however, such statements are not guarantees of future performance. They involve known and unknown risks, uncertainties, assumptions, and other important factors, many of which are beyond the control of the Company, the Directors, and management.

Such risks include, but are not limited to:

- Operational Risks: Resource and reserve estimates, geological uncertainties, and technical processing challenges.
- Market Risks: Volatility in commodity prices, foreign exchange fluctuations, and interest rate shifts.
- Regulatory Risks: Delays in obtaining or renewing government permits, environmental approvals, and changes in taxation or mining laws.

Actual results, performance, or achievements may differ materially from those expressed or implied by these forward-looking statements.

Mineral Resources Statement

The following information is provided in accordance with Listing Rule 5.21 as at 30 June 2026.

Statements relating to Mineral Resources are, by their nature, forward-looking statements. These estimates are expressions of professional judgement based on geological knowledge, prevailing industry practice, and available data. They involve significant interpretations of the mineralisation that would be encountered and the technical and economic factors that would apply if a deposit were developed and mined.

As new information is obtained through ongoing field exploration, drilling, and analytical testing, these estimates may change. Such adjustments may result in the upward or downward revision of the Company's JORC (2012) Resource classifications. There can be no assurance that the Company's projects will proceed as planned, that mineralisation will

prove to be economically viable, or that the capital required for development will be available on commercially acceptable terms.

No Obligation to Update

The Company, its Directors, and its officers do not give any assurance that the results, performance, or achievements expressed or implied by the forward-looking statements contained in this report will actually occur. Investors are cautioned not to place undue reliance on these statements.

Subject to the ASX Listing Rules and applicable law (including the Corporations Act 2001 (Cth)), the Company does not undertake any obligation to publicly update or review any forward-looking statements, whether as a result of new information, future events, or otherwise, after the date of this report.

Mineral Resource Estimation Governance Statement

Anson Resources maintains a robust governance framework and internal control system to ensure the integrity and accuracy of its Mineral Resource estimates. Key pillars of this governance include:

- **Independent External Expertise:** All Mineral Resource estimates have been generated or audited by independent external consultants who possess extensive experience in contemporary geological modelling and geostatistical estimation techniques.
- **Data Integrity and Validation:** Consultants conduct thorough reviews of the underlying data, including drilling methodology, sampling protocols, and analytical quality (QA/QC), to ensure the suitability of information used in the estimation process.
- **Standardised Methodology:** Estimates are prepared using industry-standard methodologies, integrating 3D geological interpretation with primary assay results from verified exploration programs.
- **Compliance:** All reporting is conducted in strict accordance with the Australasian Code for Reporting of Exploration Results, Mineral Resources and Ore Reserves (The JORC Code, 2012 Edition) and the ASX Listing Rules.

Competent Person's Statements

The annual Mineral Resources Statement is based on, and fairly represents, information and supporting documentation compiled by the Competent Persons named in this report. Each Competent Person is a Member or Fellow of the AusIMM or AIG (or a recognized professional organization) and possesses sufficient experience relevant to the style of mineralisation and type of deposit under consideration to qualify as a Competent Person as defined in the JORC Code.

JORC Compliance Statement:

Where statement in this announcement refer to exploration results which previously been reported, the Company confirms that it is not aware of any new information or data that materially affects the information included in the original announcements, and in the case of estimates of Mineral Resources, that all material assumptions and technical parameters

underpinning the estimates in the relevant market announcements continue to apply and have not materially changed. The Company confirms that the form and context in which the Competent Person's findings are presented have not materially modified from the original market announcements.

Green River Lithium Project

Competent Person's Statement 1

The information in this report that relates to Mineral resource estimates is based on information compiled by independent consulting Geologist D. Roy Eccles (P. Geol, P. Geo), Mr Eccles has sufficient experience which is relevant to the type of deposit under consideration and to the activity which is undertaken, to qualify as a Competent Person as defined in the 2012 Edition of the Joint Ore Reserves Committee (JORC) Australasian Code for Reporting of Exploration Results, Mineral Resources and Ore Reserves. Mr Eccles consents to the inclusion in this report of the matters based on the information made available to him, in the form and context in which it appears.

I, D. Roy Eccles, P. Geol. P. Geo., do hereby certify that I am a Competent Person as defined in 2012 Edition of the Australasian Code for Reporting of Exploration Results, Mineral Resources and Ore Reserves. I have worked as a Professional Geologist for more than 35 years since my graduation from university and have been involved in all aspects of mineral exploration, mineral research, and mineral resource estimations for metallic, industrial, and critical mineral projects and deposits including lithium-brine projects in North America, Europe, and other international destinations. I am independent of Blackstone Minerals NV LLC and the Green River Lithium-Brine Project property. I have read, and approve, of the technical content in this News Release as it pertains to the inferred and indicated mineral resource estimations.

The Company confirms that the material assumptions and technical parameters underpinning the Resource estimate and exploration target, which were announced to the ASX on 10 June 2025, have not materially changed.

Paradox Lithium Project

Competent Person's Statement 2

The information contained in this ASX release relating to Exploration Results and Mineral Resource Estimates has been prepared by Mr Richard Maddocks, MSc in Mineral Economics, BSc in Geology and Grad Dip in Applied Finance. Mr Maddocks is a Fellow of the Australasian Institute of Mining and Metallurgy (111714) with over 30 years of experience. Mr Maddocks has sufficient experience that is relevant to the style of mineralisation and type of deposit under consideration and to the activity being undertaken to qualify as a competent person as defined in the 2012 edition of the Australasian Code for Reporting of Exploration Results, Mineral Resources and Ore Reserves.

Mr Maddocks is an independent consultant to Anson Resources Ltd. Mr Maddocks consents to the inclusion in this announcement of this information in the form and context in which it appears. The information in this announcement is an accurate representation of the available data from exploration at the Paradox Lithium Project. The Company confirms that the material assumptions and technical parameters underpinning the Paradox Lithium Project Resource estimate, which was announced to the ASX on 16 October 2023, have not materially changed.

ASX Listing Rule 5.19.2 The Paradox Lithium Project DFS will continue to evolve and is part of the progressive development. The DFS announced on 8 September 2022 utilised the updated Mineral Resource Estimate, forecast financial information, including capital and operating costs for mining and processing continues to apply and have not materially changed.

Surprise Project

Competent Person's Statement 3

The information in this Report that relates to in-situ Mineral Resources is based on information compiled by Grant Louw of Auralia Mining Consulting. Grant Louw takes overall responsibility for the Mineral Resource estimate. He is a Member of the Australian Institute of Geoscientists and has sufficient experience, which is relevant to the style of mineralisation and type of deposit under consideration, and to the activity he is undertaking, to qualify as a Competent Person in terms of the 'Australasian Code for Reporting of Exploration Results, Mineral Resources and Ore Reserves (JORC Code 2012 Edition). Grant Louw consents to the inclusion of such information in this Report in the form and context in which it appears.

The Company confirms that the material assumptions and technical parameters underpinning the Surprise Resource estimate, which was announced to the ASX on 1 October 2024, have not materially changed.

The announcements regarding the mineral resources are available to view on the Company's website: www.ansonresources.com. The Company confirms that it is not aware of any new information or data that materially affects the information included in the original market announcement and, in the case of estimates of these Mineral Resources, that all material assumptions and technical parameters underpinning the estimates in the relevant market announcement continue to apply and have not materially changed. The Company confirms that the form and context in which the Competent Person's findings are presented have not been materially modified from the original market announcement.

Competent Person's Statement 4

The information in this report that relates to Exploration Target is based on information compiled and/or reviewed by Mr Greg Knox, a member in good standing of the Australasian Institute of Mining and Metallurgy. Mr Knox is a geologist who has sufficient experience which is relevant to the style of mineralisation under consideration and to the activity being undertaken to qualify as a "Competent Person", as defined in the 2012 Edition of the Australasian Code for Reporting of Exploration Results, Mineral Resources and Ore Reserves and consents to the inclusion in this report of the matters based on information in the form and context in which they appear. Mr Knox has reviewed and validated the metallurgical data and consents to the inclusion in this Announcement of this information in the form and context in which it appears. Mr Knox is a director of Anson Resources Limited and a consultant to Anson.

ASX Listing Rule 5.19.2

The Paradox Lithium Project DFS will continue to evolve and is part of the progressive development. The DFS announced on 8 September 2022 utilised the updated Mineral Resource Estimate, forecast financial information, including capital and operating costs for mining and processing continues to apply and have not materially changed.

Engineering Accuracy

The Definitive Feasibility Study (DFS) has been prepared by Worley according to the Association for the Advancement of Cost Engineering (AACE) Class III standard. The Board of Directors, Bruce Richardson, Greg Knox and Michael van Uffelen, as well as Worley consider to this to be a DFS.

APPENDIX A: INTERESTS IN MINING TENEMENTS AS AT 30 JUNE 2025

Project	Lease	Commodity	Holder	Locality	Status
Ajana	E66/89	Base metals and Critical minerals	Rhodes Resources Pty Ltd	Western Australia	Granted
	E66/94	Base metals and Critical Minerals	Anson Resources Limited	Western Australia	Granted
	ELA66/131	Base metals and Critical minerals	Anson Resources Limited	Western Australia	Under Application
Hooley Well	E9/2218	Cobalt, nickel	Western Cobalt Pty Ltd	Western Australia	Granted
	E9/2219	Cobalt, nickel	Anson Resources Limited	Western Australia	Granted
	E9/2462	Cobalt, nickel	Anson Resources Limited	Western Australia	Granted
The Bull	E70/5420	Ni-Cu-PGE	State Exploration Pty Ltd	Western Australia	Granted
	ELA70/5619	Ni-Cu-PGE	Anson Resources Limited	Western Australia	Under Application
Paradox Brine	87 Placer Claims	Lithium	A1 Lithium Inc	Utah, USA	(i)
Paradox Brine	155 Placer Claims	Lithium	A1 Lithium Inc	Utah, USA	(ii)
Paradox Brine	71 Placer Claims	Lithium	A1 Lithium Inc	Utah, USA	(iii)
Paradox Brine	191 Placer Claims	Lithium	A1 Lithium Inc	Utah, USA	(iv)
Paradox Brine	66 Placer Claims	Lithium	A1 Lithium Inc	Utah, USA	(v)
Paradox Brine	178 Placer Claims	Lithium	A1 Lithium Inc	Utah, USA	(vi)
Paradox Brine	334 Placer Claims	Lithium	A1 Lithium Inc	Utah, USA	(vii)
Paradox Brine	228 Placer Claims	Lithium	A1 Lithium Inc	Utah, USA	(viii)
Paradox Brine	154 Placer Claims	Lithium	A1 Lithium Inc	Utah, USA	(ix)
Paradox Brine	208 Placer Claims	Lithium	A1 Lithium Inc	Utah, USA	(x)

Paradox Brine	3 Potash & Mineral Lease	Lithium	A1 Lithium Inc	Utah, USA	(xi)
Paradox Brine	2 Industrial Permit	Lithium	A1 Lithium Inc	Utah, USA	(xii)
Yellow Cat Project	151 Lode Claims	Vanadium and Uranium	UV1 Minerals LLC	Utah, USA	(xiii)
Green River Lithium	628 Placer Claims	Lithium	Blackstone Minerals NV LLC	Utah, USA	(xiv)
Green River Lithium	44 Placer Claims	Lithium	Blackstone Minerals NV LLC	Utah, USA	(xv)
Green River Lithium	56 Placer Claims	Lithium	Blackstone Minerals NV LLC	Utah, USA	(xvi)
Green River Lithium	1 OBA Mineral Lease	Lithium	Blackstone Minerals NV LLC	Utah, USA	(xvii)

- (i) Anson currently holds a 50% interest in 87 Placer Claims in Utah, USA (the ULI Project).

At the date of this Report, the holder of the remaining 50% interest had not completed the formalities to transfer the claims to the joint venture company (Paradox Lithium LLC) established for this purpose. Further, achievement of the milestones which increased Anson's interest to 50% may be subject to finalisation under the terms of the agreement to earn-into the ULI Project

These claims are referred to as ULI-13, ULI-14, ULI-14S, ULI-15, ULI15S, ULI16, ULI16S, ULI-30, ULI- 31, ULI-32, ULI-33, ULI-34, ULI-35, ULI-36, ULI-37, ULI-38, ULI-39, ULI-40, ULI-41, ULI-42, ULI-43, ULI-54, ULI-55, ULI-56, ULI-57, ULI-58, ULI-59, ULI-60, ULI-60-E, ULI-61-E, ULI-62-E, ULI-63, ULI-64, ULI-64 N, ULI-65, ULI-65 W, ULI-66, ULI-67, ULI-68, ULI-69, ULI-70, ULI-71, ULI-77, ULI-78, ULI-79, ULI-80, ULI-81, ULI-81 W, ULI-82, ULI-83, ULI-84, ULI-85, ULI-86, ULI-87, ULI-88, ULI-89, ULI-90, ULI- 91, ULI-92, ULI-93, ULI-93 E, ULI-94, ULI-95, ULI-96, ULI-97, ULI-97 E, ULI-98, ULI-98 N, ULI-99, ULI-100, ULI-101, ULI-102, ULI-102 N, ULI-103, ULI-104, ULI-105, ULI-105 N, ULI-106, ULI-107, ULI-107 N, ULI-108, ULI-109, ULI-110, ULI-111, ULI-112, ULI-113 and ULI-114.

- (ii) Anson currently holds a 100% interest in 155 Placer Claims in Utah, USA. Under the terms of an earn-in agreement for the ULI Project, these placer claims may be subject to area of interest provisions of the agreement to earn-into the ULI Project.

These claims are referred to as ULI201, ULI202, ULI203, ULI204, ULI205, ULI206, ULI207, ULI208, ULI209, ULI210, ULI211, ULI212, ULI213, ULI214, ULI215, ULI216, ULI217, ULI218, ULI219, ULI220, ULI225, ULI226, ULI227, ULI228, ULI229, ULI230, ULI231, ULI232, ULI233, ULI234, ULI235, ULI236, ULI237, ULI238, ULI239, ULI240, ULI241, ULI242, ULI243, ULI244, ULI245, ULI249, ULI250, ULI251, ULI252, ULI253, ULI254, ULI255, ULI256, ULI257, ULI258, ULI259, ULI260, ULI261, ULI262, ULI263, ULI264, ULI265, ULI266, ULI267, ULI268, ULI269, ULI273, ULI274, ULI275, ULI276, ULI277, ULI278, ULI279, ULI280, ULI281, ULI282, ULI283, ULI284, ULI285, ULI286, ULI287, ULI288, ULI289, ULI293, ULI294, ULI295, ULI296, ULI297, ULI298, ULI299, ULI300, ULI301, ULI302, ULI303, ULI304, ULI305, ULI306, ULI307, ULI311, ULI312, ULI313, ULI314, ULI315, ULI316, ULI317, ULI318, ULI319, ULI320, ULI321, ULI322, ULI323, ULI324, ULI325, ULI326, ULI330, ULI331, ULI332, ULI333, ULI334, ULI335, ULI336, ULI337, ULI338, ULI339, ULI340, ULI341, ULI342, ULI343, ULI344, ULI345, ULI350, ULI351, ULI352, ULI353, ULI354, ULI355, ULI356, ULI357, ULI358, ULI359, ULI360, ULI361, ULI362, ULI369, ULI370, ULI371, ULI372, ULI373, ULI374, ULI375, ULI376, ULI379, ULI380, ULI381, ULI382, ULI383, ULI384, ULI385, ULI386,

- (iii) Anson currently holds a 100% interest in 71 Placer Claims in Utah, USA. Under the terms of an earn-in agreement for the ULI Project, these placer claims may be subject to area of interest provisions of the agreement to earn-into the ULI Project.

These claims are referred to as ULI501, ULI525, ULI549, ULI573 ULI597, ULI621, ULI645, ULI646, ULI647, ULI648, ULI653, ULI654, ULI655, ULI656, ULI661, ULI662, ULI663, ULI664, ULI665, ULI666, ULI667, ULI668, ULI669, ULI670, ULI671, ULI672, ULI673, ULI674, ULI675, ULI676, ULI677, ULI678, ULI679, ULI680, ULI681, ULI682, ULI683, ULI688, ULI689, ULI690, ULI691, ULI696, ULI697, ULI698, ULI699, ULI700, ULI701, ULI702, ULI703, ULI704, ULI705, ULI706, ULI707, ULI708, ULI709, ULI710, ULI711, ULI712, ULI713, ULI714, ULI715, ULI716, ULI717, ULI718, ULI719, ULI720, ULI721, ULI722, ULI723, ULI724, and ULI725.

- (iv) Anson currently holds a 100% interest in 193 Placer Claims in Utah, USA.

These claims are referred to as, ULI649, ULI650, ULI651, ULI652, ULI 652W, ULI657, ULI658, ULI659, ULI660, ULI660W, ULI726, ULI727, ULI728, ULI729, ULI730, ULI731, ULI732, ULI733, ULI734, ULI735, ULI736, ULI737, ULI738, ULI739, ULI740, ULI741, ULI742, ULI743, ULI744, ULI745, ULI746, ULI747, ULI748, ULI749, ULI750, ULI751, ULI752, ULI753, ULI754, ULI755, ULI756, ULI757, ULI758, ULI759, ULI760, ULI761, ULI762, ULI763, ULI764, ULI765, ULI766, ULI767, ULI768, ULI769, ULI770, ULI771, ULI772, ULI773, ULI774, ULI775, ULI776, ULI777, ULI778, ULI779, ULI780, ULI781, ULI782, ULI783, ULI784, ULI785, ULI786, ULI787, ULI788, ULI789, ULI790, ULI791, ULI792, ULI793, ULI794, ULI795, ULI844, ULI845, ULI846, ULI847, ULI848, ULI849, ULI850, ULI851, ULI852, ULI853, ULI854, ULI855, ULI856, ULI857, ULI858, ULI859, ULI860, ULI861, ULI862, ULI863, ULI864, ULI865, ULI866, ULI867, ULI868, ULI869, ULI870, ULI871, ULI872, ULI873, ULI874, ULI875, ULI876, ULI877, ULI878, ULI879, ULI880, ULI881, ULI882, ULI883, ULI884, ULI885, ULI886, ULI887, ULI888, ULI889, ULI890, ULI891, ULI892, ULI893, ULI894, ULI895, ULI896, ULI897, ULI898, ULI899, ULI900, ULI901, ULI902, ULI903, ULI904, ULI905, ULI906, ULI907, ULI908, ULI909, ULI910, ULI911, ULI912, ULI913, ULI914, ULI915, ULI916, ULI917, ULI918, ULI919, ULI920, ULI921, ULI922, ULI923, ULI924, ULI925, ULI926, ULI927, ULI928, ULI929, ULI930, ULI931, ULI932, ULI933, ULI934, ULI935, ULI936, ULI937, ULI938, ULI939, ULI940, ULI941, ULI942, ULI943, ULI944, ULI945, ULI946, ULI947, ULI948, ULI949, ULI950, ULI951, ULI952, ULI953 and ULI954.

- (v) Anson currently holds a 100% interest in 66 Placer Claims in Utah, USA.

These claims are referred to as CLOUD001, CLOUD002, CLOUD003, CLOUD004, CLOUD005, CLOUD006, CLOUD007, CLOUD008, CLOUD009, CLOUD010, CLOUD011, CLOUD012, CLOUD013, CLOUD014, CLOUD015, CLOUD016, CLOUD017, CLOUD018, CLOUD019, CLOUD020, CLOUD021, CLOUD022, CLOUD023, CLOUD024, CLOUD025, CLOUD026, CLOUD027, CLOUD028, CLOUD029, CLOUD030, CLOUD031, CLOUD032, CLOUD033, CLOUD034, CLOUD035, CLOUD036, CLOUD037, CLOUD038, CLOUD039, CLOUD040, CLOUD041, CLOUD042, CLOUD043, CLOUD044, CLOUD045, CLOUD046, CLOUD047, CLOUD048, CLOUD049, CLOUD050, CLOUD051, CLOUD052, CLOUD053, CLOUD054, CLOUD055, CLOUD056, CLOUD057, CLOUD058, CLOUD059, CLOUD060, CLOUD061, CLOUD062, CLOUD063, CLOUD064, CLOUD065 and CLOUD066

- (vi) Anson currently holds a 100% interest in 178 Placer Claims in Utah, USA.

These claims are referred to as CANE001, CANE002, CANE003, CANE004, CANE005, CANE006, CANE007, CANE008, CANE009, CANE010, CANE011, CANE012, CANE013, CANE014, CANE015, CANE016, CANE017, CANE018, CANE019, CANE020, CANE021, CANE022, CANE023, CANE024, CANE025, CANE026, CANE027, CANE028, CANE029, CANE030, CANE031, CANE032, CANE033, CANE034, CANE035, CANE036, CANE037, CANE038, CANE039, CANE040, CANE041, CANE042, CANE043, CANE044, CANE045, CANE046, CANE047, CANE048, CANE049, CANE050, CANE051, CANE052, CANE053, CANE054, CANE055, CANE056, CANE057, CANE058, CANE059, CANE060, CANE061, CANE062, CANE063, CANE064, CANE065, CANE066, CANE067, CANE068, CANE069, CANE070, CANE071, CANE072, CANE073, CANE074, CANE075, CANE076, CANE077, CANE078, CANE079, CANE080, CANE081, CANE082, CANE083, CANE084, CANE085, CANE086, CANE087, CANE088, CANE089, CANE090, CANE091, CANE092, CANE093, CANE094, CANE095, CANE096, CANE097, CANE098, CANE099, CANE100, CANE101, CANE102, CANE103, CANE104, CANE105, CANE106, CANE107, CANE108, CANE109, CANE110, CANE111, CANE112, CANE113, CANE114, CANE115, CANE116, CANE117,

CANE118, CANE119, CANE120, CANE121, CANE122, CANE123, CANE124, CANE125, CANE126, CANE127, CANE128, CANE129, CANE130, CANE131, CANE132, CANE133, CANE134, CANE135, CANE136, CANE137, CANE138, CANE139, CANE140, CANE141, CANE142, CANE143, CANE144, CANE145, CANE146, CANE147, CANE148, CANE149, CANE150, CANE151, CANE152, CANE153, CANE154, CANE155, CANE156, CANE157, CANE158, CANE159, CANE160, CANE161, CANE162, CANE163, CANE164, CANE165, CANE166, CANE167, CANE168, CANE169, CANE170, CANE171, CANE172, CANE173, CANE314, CANE175, CANE176, CANE177, and CANE178.

- (vii) Anson currently holds a 100% interest in 334 Placer Claims in Utah, USA. Under the terms of the earn-in agreement referred to in point (i) above for the ULI Project, 88 of these placer claims may be subject to area of interest provisions of the agreement to earn-into the ULI Project.

These claims are referred to as CLOUDIII001, CLOUDIII002, CLOUDIII003, CLOUDIII004, CLOUDIII005, CLOUDIII006, CLOUDIII007, CLOUDIII008, CLOUDIII009, CLOUDIII010, CLOUDIII011, CLOUDIII012, CLOUDIII013, CLOUDIII014, CLOUDIII015, CLOUDIII016, CLOUDIII017, CLOUDIII018, CLOUDIII019, CLOUDIII020, CLOUDIII021, CLOUDIII022, CLOUDIII023, CLOUDIII024, CLOUDIII025, CLOUDIII026, CLOUDIII027, CLOUDIII028, CLOUDIII029, CLOUDIII030, CLOUDIII031, CLOUDIII032, CLOUDIII033, CLOUDIII034, CLOUDIII035, CLOUDIII036, CLOUDIII037, CLOUDIII038, CLOUDIII039, CLOUDIII040, CLOUDIII041, CLOUDIII042, CLOUDIII043, CLOUDIII044, CLOUDIII045, CLOUDIII046, CLOUDIII047, CLOUDIII048, CLOUDIII049, CLOUDIII050, CLOUDIII051, CLOUDIII052, CLOUDIII053, CLOUDIII054, CLOUDIII055, CLOUDIII056, CLOUDIII057, CLOUDIII058, CLOUDIII059, CLOUDIII060, CLOUDIII061, CLOUDIII062, CLOUDIII063, CLOUDIII064, CLOUDIII065, CLOUDIII066, CLOUDIII067, CLOUDIII068, CLOUDIII069, CLOUDIII070, CLOUDIII071, CLOUDIII072, CLOUDIII073, CLOUDIII074, CLOUDIII075, CLOUDIII076, CLOUDIII077, CLOUDIII078, CLOUDIII079, CLOUDIII080, CLOUDIII081, CLOUDIII082, CLOUDIII083, CLOUDIII084, CLOUDIII085, CLOUDIII086, CLOUDIII087, CLOUDIII088, CLOUDIII089, CLOUDIII090, CLOUDIII091, CLOUDIII092, CLOUDIII093, CLOUDIII094, CLOUDIII095, CLOUDIII096, CLOUDIII097, CLOUDIII098, CLOUDIII099, CLOUDIII100, CLOUDIII101, CLOUDIII102, CLOUDIII103, CLOUDIII104, CLOUDIII105, CLOUDIII106, CLOUDIII107, CLOUDIII108, CLOUDIII109, CLOUDIII110, CLOUDIII111, CLOUDIII112, CLOUDIII113, CLOUDIII114, CLOUDIII115, CLOUDIII116, CLOUDIII117, CLOUDIII118, CLOUDIII119, CLOUDIII120, CLOUDIII121, CLOUDIII122, CLOUDIII123, CLOUDIII124, CLOUDIII125, CLOUDIII126, CLOUDIII127, CLOUDIII128, CLOUDIII129, CLOUDIII130, CLOUDIII131, CLOUDIII132, CLOUDIII133, CLOUDIII134, CLOUDIII135, CLOUDIII136, CLOUDIII137, CLOUDIII138, CLOUDIII139, CLOUDIII140, CLOUDIII141, CLOUDIII142, CLOUDIII143, CLOUDIII144, CLOUDIII145, CLOUDIII146, CLOUDIII147, CLOUDIII148, CLOUDIII149, CLOUDIII150, CLOUDIII151, CLOUDIII152, CLOUDIII153, CLOUDIII154, CLOUDIII155, CLOUDIII156, CLOUDIII157, CLOUDIII158, CLOUDIII159, CLOUDIII160, CLOUDIII161, CLOUDIII162, CLOUDIII163, CLOUDIII164, CLOUDIII165, CLOUDIII166, CLOUDIII167, CLOUDIII168, CLOUDIII169, CLOUDIII170, CLOUDIII171, CLOUDIII172, CLOUDIII173, CLOUDIII174, CLOUDIII175, CLOUDIII176, CLOUDIII177, CLOUDIII178, CLOUDIII179, CLOUDIII180, CLOUDIII181, CLOUDIII182, CLOUDIII183, CLOUDIII184, CLOUDIII185, CLOUDIII186, CLOUDIII187, CLOUDIII188, CLOUDIII189, CLOUDIII190, CLOUDIII191, CLOUDIII192, CLOUDIII193, CLOUDIII194, CLOUDIII195, CLOUDIII196, CLOUDIII197, CLOUDIII198, CLOUDIII199, CLOUDIII200, CLOUDIII201, CLOUDIII202, CLOUDIII203, CLOUDIII204, CLOUDIII205, CLOUDIII206, CLOUDIII207, CLOUDIII208, CLOUDIII209, CLOUDIII210, CLOUDIII211, CLOUDIII212, CLOUDIII213, CLOUDIII214, CLOUDIII215, CLOUDIII216, CLOUDIII217, CLOUDIII218, CLOUDIII219, CLOUDIII220, CLOUDIII221, CLOUDIII222, CLOUDIII223, CLOUDIII224, CLOUDIII225, CLOUDIII226, CLOUDIII227, CLOUDIII228, CLOUDIII229, CLOUDIII230, CLOUDIII231, CLOUDIII232, CLOUDIII233, CLOUDIII234, CLOUDIII235, CLOUDIII236, CLOUDIII237, CLOUDIII238, CLOUDIII239, CLOUDIII240, CLOUDIII241, CLOUDIII242, CLOUDIII243, CLOUDIII244, CLOUDIII245, CLOUDIII246, CLOUDIII247, CLOUDIII248, CLOUDIII249, CLOUDIII250, CLOUDIII251, CLOUDIII252, CLOUDIII253, CLOUDIII254, CLOUDIII255, CLOUDIII256, CLOUDIII257, CLOUDIII258, CLOUDIII259, CLOUDIII260, CLOUDIII261, CLOUDIII262, CLOUDIII263, CLOUDIII264, CLOUDIII265, CLOUDIII266, CLOUDIII267, CLOUDIII268, CLOUDIII269, CLOUDIII270, CLOUDIII271, CLOUDIII272, CLOUDIII273, CLOUDIII274, CLOUDIII275, CLOUDIII276, CLOUDIII277, CLOUDIII278, CLOUDIII279, CLOUDIII280, CLOUDIII281, CLOUDIII282, CLOUDIII283, CLOUDIII284, CLOUDIII285, CLOUDIII286, CLOUDIII287, CLOUDIII288, CLOUDIII289, CLOUDIII290, CLOUDIII291, CLOUDIII292, CLOUDIII293, CLOUDIII294, CLOUDIII295, CLOUDIII296, CLOUDIII297, CLOUDIII298, CLOUDIII299, CLOUDIII300, CLOUDIII301, CLOUDIII302, CLOUDIII303, CLOUDIII304, CLOUDIII305, CLOUDIII306, CLOUDIII307, CLOUDIII308, CLOUDIII309, CLOUDIII310, CLOUDIII311, CLOUDIII312, CLOUDIII313, CLOUDIII314, CLOUDIII315, CLOUDIII316, CLOUDIII317, CLOUDIII318, CLOUDIII319, CLOUDIII320, CLOUDIII321, CLOUDIII322, CLOUDIII323, CLOUDIII324, CLOUDIII325, CLOUDIII326, CLOUDIII327, CLOUDIII328, CLOUDIII329, CLOUDIII330, CLOUDIII331, CLOUDIII332, CLOUDIII333 and CLOUDIII334.

- (viii) Anson currently holds a 100% interest in 228 Placer Claims in Utah, USA.

These claims are referred to ULI2 001, ULI2 002, ULI2 003, ULI2 004, ULI2 005, ULI2 006, ULI2 007, ULI2 008, ULI2 009, ULI2 010, ULI2 011, ULI2 012, ULI2 013, ULI2 014, ULI2 015, ULI2 016, ULI2 017, ULI2 018, ULI2 019, ULI2 020, ULI2 021, ULI2 022, ULI2 023, ULI2 024, ULI2 025, ULI2 026, ULI2 027,

ULI2 028, ULI2 029, ULI2 030, ULI2 031, ULI2 032, ULI2 033, ULI2 034, ULI2 035, ULI2 036, ULI2 037, ULI2 038, ULI2 039, ULI2 040, ULI2 041, ULI2 042, ULI2 043, ULI2 044, ULI2 045, ULI2 046, ULI2 047, ULI2 048, ULI2 049, ULI2 050, ULI2 051, ULI2 052, ULI2 053, ULI2 054, ULI2 055, ULI2 056, ULI2 057, ULI2 058, ULI2 059, ULI2 060, ULI2 061, ULI2 062, ULI2 063, ULI2 064, ULI2 065, ULI2 066, ULI2 067, ULI2 068, ULI2 069, ULI2 070, ULI2 071, ULI2 072, ULI2 073, ULI2 074, ULI2 075, ULI2 076, ULI2 077, ULI2 078, ULI2 079, ULI2 080, ULI2 081, ULI2 082, ULI2 083, ULI2 084, ULI2 085, ULI2 086, ULI2 087, ULI2 088, ULI2 089, ULI2 090, ULI2 091, ULI2 092, ULI2 093, ULI2 094, ULI2 095, ULI2 096, ULI2 097, ULI2 098, ULI2 099, ULI2 100, ULI2 101, ULI2 102, ULI2 103, ULI2 104, ULI2 105, ULI2 106, ULI2 107, ULI2 108, ULI2 109, ULI2 110, ULI2 111, ULI2 112, ULI2 113, ULI2 114, ULI2 115, ULI2 116, ULI2 117, ULI2 118, ULI2 119, ULI2 120, ULI2 121, ULI2 122, ULI2 123, ULI2 124, ULI2 125, ULI2 126, ULI2 127, ULI2 128, ULI2 129, ULI2 130, ULI2 131, ULI2 132, ULI2 133, ULI2 134, ULI2 135, ULI2 136, ULI2 137, ULI2 138, ULI2 139, ULI2 140, ULI2 141, ULI2 142, ULI2 143, ULI2 144, ULI2 145, ULI2 146, ULI2 147, ULI2 148, ULI2 149, ULI2 150, ULI2 151, ULI2 152, ULI2 153, ULI2 154, ULI2 155, ULI2 156, ULI2 157, ULI2 158, ULI2 159, ULI2 160, ULI2 161, ULI2 162, ULI2 163, ULI2 164, ULI2 165, ULI2 166, ULI2 167, ULI2 168, ULI2 169, ULI2 170, ULI2 171, ULI2 172, ULI2 173, ULI2 174, ULI2 175, ULI2 176, ULI2 177, ULI2 178, ULI2 179, ULI2 180, ULI2 181, ULI2 182, ULI2 183, ULI2 184, ULI2 185, ULI2 186, ULI2 187, ULI2 188, ULI2 189, ULI2 190, ULI2 191, ULI2 192, ULI2 193, ULI2 194, ULI2 195, ULI2 196, ULI2 197, ULI2 198, ULI2 199, ULI2 200, ULI2 201, ULI2 202, ULI2 203, ULI2 204, ULI2 205, ULI2 206, ULI2 207, ULI2 208, ULI2 209, ULI2 210, ULI2 211, ULI2 212, ULI2 213, ULI2 214, ULI2 215, ULI2 216, ULI2 217, ULI2 218, ULI2 219, ULI2 220, ULI2 221, ULI2 222, ULI2 223, ULI2 224, ULI2 225, ULI2 226, ULI2 227 and ULI2 228.

(ix) Anson currently holds a 100% interest in 154 Placer Claims in Utah, USA.

These claims are referred to as SM65, SM66, SM67, SM68, SM69, SM70, SM71, SM72, SM73, SM74, SM75, SM76, SM77, SM78, SM79, SM80, SM81, SM82, SM83, SM84, SM85, SM86, SM87, SM152, SM153, SM154, SM155, SM156, SM157, SM158, SM159, SM160, SM161, SM162, SM163, SM164, SM165, SM166, SM167, SM168, SM169, SM170, SM171, SM172, SM173, SM174, SM239, SM240, SM241, SM242, SM243, SM244, SM245, SM246, SM247, SM248, SM249, SM250, SM251, SM252, SM253, SM254, SM255, SM256, SM257, SM258, SM259, SM260, SM261, SM326, SM327, SM328, SM329, SM330, SM331, SM332, SM333, SM334, SM335, SM336, SM337, SM338, SM339, SM340, SM341, SM342, SM343, SM344, SM345, SM346, SM347, SM348, , SM405, SM406, SM407, SM408, SM409, SM410, SM411, SM412, SM413, SM414, SM415, SM416, SM417, SM418, SM419, SM420, SM421, SM422, SM423, SM424, SM425, SM426, SM427, SM428, SM429, SM430, SM431, SM432, SM433, SM434, SM435, SM492, SM493, SM494, SM495, SM496, SM497, SM498, SM499, SM500, SM501, SM502, SM503, SM504, SM505, SM506, SM507, SM508, SM509, SM510, SM511, SM512, SM513, SM514, SM515, SM516, SM517, SM518, SM519, SM520, SM521 and SM522. .

(x) Anson currently holds a 100% interest in 208 Placer Claims in Utah, USA.

These claims are re referred to GE 1, GE 1A, GE 1B, GE 1C, GE 1D GE 1E, GE 1F, GE 1G, GE 2, GE 2A, GE 2B, GE 2C, GE 2D GE 2E, GE 2F, GE 2G, GE 3, GE 3A, GE 3B, GE 3C, GE 3D GE 3E, GE 3F, GE 3G, GE 4, GE 4A, GE 4B, GE 4C, GE 4D GE 4E, GE 4F, GE 4G, GE 5, GE 5A, GE 5B, GE 5C, GE 5D GE 5E, GE 5F, GE 5G, GE 6, GE 6A, GE 6B, GE 6C, GE 6D GE 6E, GE 6F, GE 6G, GE 7, GE 7A, GE 7B, GE 7C, GE 7D GE 7E, GE 7F, GE 7G, GE 8, GE 8A, GE 8B, GE 8C, GE 8D GE 8E, GE 8F, GE 8G, GE 9, GE 9A, GE 9B, GE 9C, GE 9D GE 9E, GE 9F, GE 9G, GE 10, GE 10A, GE 10B, GE 10C, GE 10D GE 10E, GE 10F, GE 10G, GE 11, GE 11A, GE 11B, GE 11C, GE 11D GE 11E, GE 11F, GE 11G, GE 12, GE 12A, GE 12B, GE 12C, GE 12D GE 12E, GE 12F, GE 12G, GE 13, GE 13A, GE 13B, GE 13C, GE 13D GE 13E, GE 13F, GE 13G, GE 14, GE 14A, GE 14B, GE 14C, GE 14D GE 14E, GE 14F, GE 14G, GE 15, GE 15A, GE 15B, GE 15C, GE 15D GE 15E, GE 15F, GE 15G, GE 16, GE 16A, GE 16B, GE 16C, GE 16D GE 16E, GE 16F, GE 16G, GE 17, GE 17A, GE 17B, GE 17C, GE 17D GE 17E, GE 17F, GE 17G, GE 18, GE 18A, GE 18B, GE 18C, GE 18D GE 18E, GE 18F, GE 18G, GE 19, GE 19A, GE 19B, GE 19C, GE 19D GE 19E, GE 19F, GE 19G, GE 20, GE 20A, GE 20B, GE 20C, GE 20D GE 20E, GE 20F, GE 20G, GE 21, GE 21A, GE 21B, GE 21C, GE 21D GE 21E, GE 21F, GE 21G, GE 22, GE 22A, GE 22B, GE 22C, GE 22D GE 22E, GE 22F, GE 22G, GE 23, GE 23A, GE 23B, GE 23C, GE 23D GE 23E, GE 23F, GE 23G, GE 24, GE 24A, GE 24B, GE 24C, GE 24D GE 24E, GE 24F, GE 24G, GE 25, GE 25A, GE 25B, GE 25C, GE 25D GE 25E, GE 25F, GE 25G, GE 26, GE 26A, GE 26B, GE 26C, GE 26D GE 26E, GE 26F, GE 26G, GE 11, GE 11A, GE 11B, GE 11C, GE 11D GE 11E, GE 11F, GE 11G, GE 12, GE 12A, GE 12B, GE 12C, GE 12D GE 12E, GE 12F, GE 12G, GE 13, GE 13A, GE 13B, GE 13C, GE 13D GE 13E, GE 13F, GE 13G, GE 14, GE 14A, GE 14B, GE 14C, GE 14D GE 14E, GE 14F, GE 14G, GE 15, GE 15A, GE 15B, GE 15C, GE 15D GE 15E, GE 15F, GE 15G, GE 16, GE 16A, GE 16B, GE 16C, GE 16D GE 16E, GE 16F, GE 16G.

(xi) Anson currently holds a 100% interest in 3 SITLA Potash and Mineral Salts Lease in Utah, USA. These claims are referred to as ML-53853-OBA, ML-54099-OBA, and ML-54253-OBA.

(xii) Anson currently holds a 100% interest in 2 SITLA Industrial Permit in Utah, USA. These claims are referred to as SULA1872 and 1930.

(xiii) Anson currently holds a 100% interest in 151 lode claims.

These claims are referred to as YELLOWCAT002, YELLOWCAT011, YELLOWCAT012, YELLOWCAT013, YELLOWCAT014, YELLOWCAT015, YELLOWCAT017, YELLOWCAT018, YELLOWCAT019, YELLOWCAT020, YELLOWCAT021, YELLOWCAT022, YELLOWCAT023, YELLOWCAT024, YELLOWCAT025, YELLOWCAT039, YELLOWCAT041, YELLOWCAT042, YELLOWCAT043, YELLOWCAT044, YELLOWCAT045, YELLOWCAT046, YELLOWCAT047, YELLOWCAT048, YELLOWCAT049, YELLOWCAT050, YELLOWCAT051, YELLOWCAT052, YELLOWCAT053, YELLOWCAT054, YELLOWCAT055, YELLOWCAT056, YELLOWCAT057, YELLOWCAT058, YELLOWCAT059, YELLOWCAT060, YELLOWCAT061, YELLOWCAT073, YELLOWCAT074, YELLOWCAT076, YELLOWCAT078, YELLOWCAT080, YELLOWCAT082, YELLOWCAT083, YELLOWCAT084, YELLOWCAT085, YELLOWCAT120, YELLOWCAT121, YELLOWCAT122, YELLOWCAT123, YELLOWCAT124, YELLOWCAT125, YELLOWCAT126, YELLOWCAT127, YELLOWCAT128, YELLOWCAT129, YELLOWCAT130, YELLOWCAT131, YELLOWCAT132, YELLOWCAT133, YELLOWCAT162, YELLOWCAT163, YELLOWCAT164, YELLOWCAT165, YELLOWCAT166, YELLOWCAT167, YELLOWCAT168, YELLOWCAT169, YELLOWCAT170, YELLOWCAT171, YELLOWCAT172, YELLOWCAT173, YELLOWCAT174, YELLOWCAT175, YELLOWCAT196, YELLOWCAT197, YELLOWCAT198, YELLOWCAT199, YELLOWCAT200, YELLOWCAT201, YELLOWCAT202, YELLOWCAT203, YELLOWCAT204, YELLOWCAT205, YELLOWCAT206, YELLOWCAT207, YELLOWCAT208, YELLOWCAT209, YELLOWCAT210, YELLOWCAT211, YELLOWCAT213, YELLOWCAT231, YELLOWCAT232, YELLOWCAT233, YELLOWCAT234, YELLOWCAT235, YELLOWCAT236, YELLOWCAT237, YELLOWCAT238, YELLOWCAT239, YELLOWCAT240, YELLOWCAT241, YELLOWCAT242, YELLOWCAT243, YELLOWCAT244, YELLOWCAT246, YELLOWCAT267, YELLOWCAT268, YELLOWCAT269, YELLOWCAT270, YELLOWCAT271, YELLOWCAT272, YELLOWCAT273, YELLOWCAT274, YELLOWCAT275, YELLOWCAT276, YELLOWCAT277, YELLOWCAT278, YELLOWCAT284, YELLOWCAT308, YELLOWCAT309, YELLOWCAT310, YELLOWCAT311, YELLOWCAT312, YELLOWCAT313, YELLOWCAT314, YELLOWCAT315, YELLOWCAT316, YELLOWCAT317 and JM#1 to JM#22.

(xiv) Anson currently holds a 100% interest in 628 Placer Claims in Utah, USA.

These claims are referred to as GR 1, GR 2, GR 3, GR 4, GR 5, GR 6, GR 7, GR 8, GR 9, GR 10, GR 11, GR 12, GR 13, GR 14, GR 15, GR 16, GR 17, GR 18, GR 19, GR 20, GR 21, GR 22, GR 23, GR 24, GR 25, GR 26, GR 27, GR 28, GR 29, GR 30, GR 31, GR 32, GR 33, GR 34, GR 35, GR 36, GR 37, GR 38, GR 39, GR 40, GR 41, GR 42, GR 43, GR 44, GR 45, GR 46, GR 47, GR 48, GR 49, GR 50, GR 51, GR 52, GR 53, GR 54, GR 55, GR 56, GR 57, GR 58, GR 59, GR 60, GR 61, GR 62, GR 63, GR 64, GR 65, GR 66, GR 67, GR 68, GR 69, GR 70, GR 71, GR 72, GR 73, GR 74, GR 75, GR 76, GR 77, GR 78, GR 79, GR 80, GR 81, GR 82, GR 83, GR 84, GR 85, GR 86, GR 87, GR 88, GR 89, GR 90, GR 91, GR 92, GR 93, GR 94, GR 95, GR 96, GR 97, GR 98, GR 99, GR 100, GR 101, GR 102, GR 103, GR 104, GR 105, GR 106, GR 107, GR 108, GR 109, GR 110, GR 111, GR 112, GR 113, GR 114, GR 115, GR 116, GR 117, GR 118, GR 119, GR 120, GR 121, GR 122, GR 123, GR 124, GR 125, GR 126, GR 127, GR 128, GR 129, GR 130, GR 131, GR 132, GR 133, GR 134, GR 135, GR 136, GR 137, GR 138, GR 139, GR 140, GR 141, GR 142, GR 143, GR 144, GR 145, GR 146, GR 147, GR 148, GR 149, GR 150, GR 151, GR 152, GR 153, GR 154, GR 155, GR 156, GR 157, GR 158, GR 159, GR 160, GR 161, GR 162, GR 163, GR 164, GR 165, GR 166, GR 167, GR 168, GR 169, GR 170, GR 171, GR 172, GR 173, GR 174, GR 175, GR 176, GR 177, GR 178, GR 179, GR 180, GR 181, GR 182, GR 183, GR 184, GR 185, GR 186, GR 187, GR 188, GR 189, GR 190, GR 191, GR 192, GR 193, GR 194, GR 195, GR 196, GR 197, GR 198, GR 199, GR 200, GR 201, GR 202, GR 203, GR 204, GR 205, GR 206, GR 207, GR 208, GR 209, GR 210, GR 211, GR 212, GR 213, GR 214, GR 215, GR 216, GR 217, GR 218, GR 219, GR 220, GR 221, GR 222, GR 223, GR 224, GR 225, GR 226, GR 227, GR 228, GR 229, GR 230, GR 231, GR 232, GR 233, GR 234, GR 235, GR 236, GR 237, GR 238, GR 239, GR 240, GR 241, GR 242, GR 243, GR 244, GR 245, GR 246, GR 247, GR 248, GR 249, GR 250, GR 251, GR 252, GR 253, GR 254, GR 255, GR 256, GR 257, GR 258, GR 259, GR 260, GR 261, GR 262, GR 263, GR 264, GR 265, GR 266, GR 267, GR 268, GR 269, GR 270, GR 271, GR 272, GR 273, GR 274, GR 275, GR 276, GR 277, GR 278, GR 279, GR 280, GR 281, GR 282, GR 283, GR 284, GR 285, GR 286, GR 287, GR 288, GR 289, GR 290, GR 291, GR 292, GR 293, GR 294, GR 295, GR 296, GR 297, GR 298, GR 299, GR 300, GR 301, GR 302, GR 303, GR 304, GR 305, GR 306, GR 307, GR 308, GR 309, GR 310, GR 311, GR 312, GR 313, GR 314, GR 315, GR 316, GR 317, GR 318, GR 319, GR 320, GR 321, GR 322, GR 323, GR 324, GR 325, GR 326, GR 327, GR 328, GR 329, GR 330, GR 331, GR 332, GR 333, GR 334, GR 335, GR 336, GR 337, GR 338, GR 339, GR

340, GR 341, GR 342, GR 343, GR 344, GR 345, GR 346, GR 347, GR 348, GR 349, GR 350, GR 351, GR 352, GR 353, GR 354, GR 355, GR 356, GR 357, GR 358, GR 359, GR 360, GR 361, GR 362, GR 363, GR 364, GR 365, GR 366, GR 367, GR 368, GR 369, GR 370, GR 371, GR 372, GR 373, GR 374, GR 375, GR 376, GR 377, GR 378, GR 379, GR 380, GR 381, GR 382, GR 383, GR 384, GR 385, GR 386, GR 387, GR 388, GR 389, GR 390, GR 391, GR 392, GR 393, GR 394, GR 395, GR 396, GR 397, GR 398, GR 399, GR 400, GR 401, GR 402, GR 403, GR 404, GR 405, GR 406, GR 407, GR 408, GR 409, GR 410, GR 411, GR 412, GR 413, GR 414, GR 415, GR 416, GR 417, GR 418, GR 419, GR 420, GR 421, GR 422, GR 423, GR 424, GR 425, GR 426, GR 427, GR 428, GR 429, GR 430, GR 431, GR 432, GR 433, GR 434, GR 435, GR 436, GR 437, GR 438, GR 439, GR 440, GR 441, GR 442, GR 443, GR 444, GR 445, GR 446, GR 447, GR 448, GR 449, GR 450, GR 451, GR 452, GR 453, GR 454, GR 455, GR 456, GR 457, GR 458, GR 459, GR 460, GR 461, GR 462, GR 463, GR 464, GR 465, GR 466, GR 467, GR 468, GR 469, GR 470, GR 471, GR 472, GR 473, GR 474, GR 475, GR 476, GR 477, GR 478, GR 479, GR 480, GR 481, GR 482, GR 483, GR 484, GR 485, GR 486, GR 487, GR 488, GR 489, GR 490, GR 491, GR 492, GR 493, GR 494, GR 495, GR 496, GR 497, GR 498, GR 499, GR 500, GR 501, GR 502, GR 503, GR 504, GR 505, GR 506, GR 507, GR 508, GR 509, GR 510, GR 511, GR 512, GR 513, GR 514, GR 515, GR 516, GR 517, GR 518, GR 519, GR 520, GR 521, GR 522, GR 523, GR 524, GR 525, GR 526, GR 527, GR 528, GR 529, GR 530, GR 531, GR 532, GR 533, GR 534, GR 535, GR 536, GR 537, GR 538, GR 539, GR 540, GR 541, GR 542, GR 543, GR 544, GR 545, GR 546, GR 547, GR 548, GR 549, GR 550, GR 551, GR 552, GR 553, GR 554, GR 555, GR 556, GR 557, GR 558, GR 559, GR 560, GR 561, GR 562, GR 563, GR 564, GR 565, GR 566, GR 567, GR 568, GR 569, GR 570, GR 571, GR 572, GR 573, GR 574, GR 575, GR 576, GR 577, GR 578, GR 579, GR 580, GR 581, GR 582, GR 583, GR 584, GR 585, GR 586, GR 587, GR 588, GR 589, GR 590, GR 591, GR 592, GR 593, GR 594, GR 595, GR 596, GR 597, GR 598, GR 599, GR 600, GR 601, GR 602, GR 603, GR 604, GR 605, GR 606, GR 607, GR 608, GR 609, GR 610, GR 611, GR 612, GR 613, GR 614, GR 615, GR 616, GR 617, GR 618, GR 619, GR 620, GR 621, GR 622, GR 623, GR 624, GR 625, GR 626, GR 627 and GR 628.

(xv) Anson currently holds a 100% interest in 44 Placer Claims in Utah, USA.

These claims are referred to as GFU 1, GFU 2, GFU 3, GFU 4, GFU 5, GFU 6, GFU 7, GFU 8, GFU 9, GFU 10, GFU 11, GFU 12, GFU 13, GFU 14, GFU 15, GFU 16, GFU 17, GFU 18, GFU 19, GFU 20, GFU 21, GFU 22, GFU 23, GFU 24, GFU 25, GFU 26, GFU 27, GFU 28, GFU 29, GFU 30, GFU 31, GFU 32, GFU 33, GFU 34, GFU 35, GFU 36, GFU 37, GFU 38, GFU 39, GFU 40, GFU 41, GFU 42, GFU 43 and GFU 44.

(xvi) Anson currently holds a 100% interest in 56 Placer Claims in Utah, USA.

These claims are referred to as GRU 1, GRU 2, GRU 3, GRU 4, GRU 5, GRU 6, GRU 7, GRU 8, GRU 9, GRU 10, GRU 11, GRU 12, GRU 13, GRU 14, GRU 15, GRU 16, GRU 17, GRU 18, GRU 19, GRU 20, GRU 21, GRU 22, GRU 23, GRU 24, GRU 25, GRU 26, GRU 27, GRU 28, GRU 29, GRU 30, GRU 31, GRU 32, GRU 33, GRU 34, GRU 35, GRU 36, GRU 37, GRU 38, GRU 39, GRU 40, GRU 41, GRU 42, GRU 43, GRU 44, GRU 45, GRU 46, GRU 47, GRU 48, GRU 49, GRU 50, GRU 51, GRU 52, GRU 53, GRU 54, GRU 55 and GRU 56.

(xvii) Anson currently holds a 100% interest in 1 SITLA Potash and Mineral Salts Lease in Utah, USA. This OBA claim is referred to as ML 54440-OBA.

Appendix 5B

Mining exploration entity or oil and gas exploration entity quarterly cash flow report

Name of entity

Anson Resources Limited

ABN

46 136 636 005

Quarter ended ("current quarter")

31 March 2026

Consolidated statement of cash flows	Current quarter \$A'000	Year to date (9 months) \$A'000
1. Cash flows from operating activities		
1.1 Receipts from customers		
1.2 Payments for		
(a) exploration & evaluation	(2,753)	(5,603)
(b) development	-	-
(c) production	-	-
(d) staff costs	(898)	(2,780)
(e) administration and corporate costs	(742)	(1,938)
1.3 Dividends received (see note 3)	-	-
1.4 Interest received	24	26
1.5 Interest and other costs of finance paid	(17)	(62)
1.6 Income taxes paid	-	-
1.7 Government grants and tax incentives	-	-
1.8 Other (provide details if material)	-	-
1.9 Net cash from / (used in) operating activities	(4,385)	(10,357)
2. Cash flows from investing activities		
2.1 Payments to acquire or for:		
(a) entities	-	-
(b) tenements	-	-
(c) property, plant and equipment	-	-
(d) exploration & evaluation	-	-
(e) investments	-	-
(f) other non-current assets	-	-

Appendix 5B

Mining exploration entity or oil and gas exploration entity quarterly cash flow report

Consolidated statement of cash flows		Current quarter \$A'000	Year to date (12 months) \$A'000
2.2	Proceeds from the disposal of:		
	(a) entities	-	-
	(b) tenements	-	-
	(c) property, plant and equipment	-	-
	(d) investments	-	-
	(e) other non-current assets	-	-
2.3	Cash flows from loans to other entities	-	-
2.4	Dividends received (see note 3)	-	-
2.5	Other (provide details if material)	-	-
2.6	Net cash from / (used in) investing activities	-	-

3.	Cash flows from financing activities		
3.1	Proceeds from issues of equity securities (excluding convertible debt securities)	-	19,000
3.2	Proceeds from issue of convertible debt securities	-	-
3.3	Proceeds from exercise of options	-	4
3.4	Transaction costs related to issues of equity securities or convertible debt securities	(32)	(1,149)
3.5	Proceeds from borrowings	-	-
3.6	Repayment of borrowings (Lease liabilities)	(68)	(434)
3.7	Transaction costs related to loans and borrowings	-	-
3.8	Dividends paid	-	-
3.9	Other (provide details if material)	-	-
3.10	Net cash from / (used in) financing activities	(100)	17,420

4.	Net increase / (decrease) in cash and cash equivalents for the period		
4.1	Cash and cash equivalents at beginning of period	14,099	2,528
4.2	Net cash from / (used in) operating activities (item 1.9 above)	(4,385)	(10,357)
4.3	Net cash from / (used in) investing activities (item 2.6 above)	-	-
4.4	Net cash from / (used in) financing activities (item 3.10 above)	(100)	17,420

Appendix 5B

Mining exploration entity or oil and gas exploration entity quarterly cash flow report

Consolidated statement of cash flows		Current quarter \$A'000	Year to date (12 months) \$A'000
4.5	Effect of movement in exchange rates on cash held	(123)	(60)
4.6	Cash and cash equivalents at end of period	9,491	9,370

5.	Reconciliation of cash and cash equivalents at the end of the quarter (as shown in the consolidated statement of cash flows) to the related items in the accounts	Current quarter \$A'000	Previous quarter \$A'000
5.1	Bank balances	3,821	2,896
5.2	Call deposits	5,670	9,100
5.3	Bank overdrafts	-	-
5.4	Other (provide details)	-	-
5.5	Cash and cash equivalents at end of quarter (should equal item 4.6 above)	9,461	14,099

6.	Payments to related parties of the entity and their associates	Current quarter \$A'000
6.1	Aggregate amount of payments to related parties and their associates included in item 1	420
6.2	Aggregate amount of payments to related parties and their associates included in item 2	-
<i>Note: if any amounts are shown in items 6.1 or 6.2, your quarterly activity report must include a description of, and an explanation for, such payments.</i>		

Mining exploration entity or oil and gas exploration entity quarterly cash flow report

7. Financing facilities	Total facility amount at quarter end \$A'000	Amount drawn at quarter end \$A'000
<i>Note: the term "facility" includes all forms of financing arrangements available to the entity. Add notes as necessary for an understanding of the sources of finance available to the entity.</i>		
7.1 Loan facilities	-	-
7.2 Credit standby arrangements	-	-
7.3 Other (please specify)	30,000	-
7.4 Total financing facilities	30,000	-
7.5 Unused financing facilities available at quarter end		30,000
7.6 Include in the box below a description of each facility above, including the lender, interest rate, maturity date and whether it is secured or unsecured. If any additional financing facilities have been entered into or are proposed to be entered into after quarter end, include a note providing details of those facilities as well.		
<p>During July 2025, the Company amended its equity placement facility, dated 17 May 2019, with Long State Investment Limited (LSI). The amended total facility in place is \$30,000,000.</p> <p>Anson may, until 31 December 2026, draw down up to \$300,000 at a time (\$4,500,000 with the prior written consent of LSI) at a cost of 5% of the drawn down amount at a price equal to the average of 2 daily VWAPs nominated by the investor during the 20 consecutive trading days commencing on the trading day immediately after a placement notice is provided.</p> <p>No amounts have currently been drawn down under the new facility. Drawdown is at the discretion of Anson.</p>		

8. Estimated cash available for future operating activities	\$A'000
8.1 Net cash from / (used in) operating activities (item 1.9)	(4,385)
8.2 (Payments for exploration & evaluation classified as investing activities) (item 2.1(d))	-
8.3 Total relevant outgoings (item 8.1 + item 8.2)	(4,385)
8.4 Cash and cash equivalents at quarter end (item 4.6)	9,492
8.5 Unused finance facilities available at quarter end (item 7.5)	30,000
8.6 Total available funding (item 8.4 + item 8.5)	39,491
8.7 Estimated quarters of funding available (item 8.6 divided by item 8.3)	9.01
<i>Note: if the entity has reported positive relevant outgoings (ie a net cash inflow) in item 8.3, answer item 8.7 as "N/A". Otherwise, a figure for the estimated quarters of funding available must be included in item 8.7.</i>	
8.8 If item 8.7 is less than 2 quarters, please provide answers to the following questions:	
8.8.1 Does the entity expect that it will continue to have the current level of net operating cash flows for the time being and, if not, why not?	
Answer: n/a	

Mining exploration entity or oil and gas exploration entity quarterly cash flow report

8.8.2 Has the entity taken any steps, or does it propose to take any steps, to raise further cash to fund its operations and, if so, what are those steps and how likely does it believe that they will be successful?

Answer: n/a

8.8.3 Does the entity expect to be able to continue its operations and to meet its business objectives and, if so, on what basis?

Answer: n/a

Note: where item 8.7 is less than 2 quarters, all of questions 8.8.1, 8.8.2 and 8.8.3 above must be answered.

Compliance Statement

- 1 This statement has been prepared in accordance with accounting standards and policies which comply with Listing Rule 19.11A.
- 2 This statement gives a true and fair view of the matters disclosed.

Date: 29 April 2026

Authorised by: The Executive Chairman and CEO
(Name of body or officer authorising release – see note 4)

1. This quarterly cash flow report and the accompanying activity report provide a basis for informing the market about the entity's activities for the past quarter, how they have been financed and the effect this has had on its cash position. An entity that wishes to disclose additional information over and above the minimum required under the Listing Rules is encouraged to do so.
2. If this quarterly cash flow report has been prepared in accordance with Australian Accounting Standards, the definitions in, and provisions of, *AASB 6: Exploration for and Evaluation of Mineral Resources* and *AASB 107: Statement of Cash Flows* apply to this report. If this quarterly cash flow report has been prepared in accordance with other accounting standards agreed by ASX pursuant to Listing Rule 19.11A, the corresponding equivalent standards apply to this report.
3. Dividends received may be classified either as cash flows from operating activities or cash flows from investing activities, depending on the accounting policy of the entity.
4. If this report has been authorised for release to the market by your board of directors, you can insert here: "By the board". If it has been authorised for release to the market by a committee of your board of directors, you can insert here: "By the [name of board committee – eg Audit and Risk Committee]". If it has been authorised for release to the market by a disclosure committee, you can insert here: "By the Disclosure Committee".
5. If this report has been authorised for release to the market by your board of directors and you wish to hold yourself out as complying with recommendation 4.2 of the ASX Corporate Governance Council's *Corporate Governance Principles and Recommendations*, the board should have received a declaration from its CEO and CFO that, in their opinion, the financial records of the entity have been properly maintained, that this report complies with the appropriate accounting standards and gives a true and fair view of the cash flows of the entity, and that their opinion has been formed on the basis of a sound system of risk management and internal control which is operating effectively.