



# HORSESHOE METALS LIMITED

ASX ANNOUNCEMENT

28 April 2026

## Precious Metal Credits Add Significant Value to Copper DSO at Horseshoe Lights, WA

*Newly reported high-grade gold and silver assays add highly  
valuable potential revenue stream to DSO stockpile sales*

- Analysis of Chalcocite/Digenite DSO samples confirms significant Au and Ag material up to **2.56 g/t Au and 107.3 g/t Ag** respectively
- DSO precious metals content was reviewed and uncovered after potential offtake parties advised that credits would be paid for Au and Ag content
- Historic Copper DSO drilling intersected significant Au and Ag mineralisation including:
  - **3m @ 22.3% Cu, 25.0 g/t Au and 2,096 g/t Ag from 40m** (RC 806)
  - **6m @ 35.1% Cu, 17.8 g/t Au and 1,267 g/t Ag from 17m** (RD821)
  - **11m @ 24.5% Cu, 12.15 g/t Au and 202 g/t Ag from 178m** (DDH 28)
  - **6.2m @ 31.4% Cu, 4.82 g/t Au and 158g/t Ag from 202.8m** (DDH 14)
- Discussions continue with several international potential copper concentrate offtake partners including three new parties since January 2026
- Rising copper price has again breached \$US6.00/lb (US\$13,225/t) having risen from around US\$4.20lb (US\$9,170/t) a year ago (May 2025)
- Receipt of DSO Mining Approval last year facilitates potential for significant early cash flow this year from sales of existing high-grade copper stockpiles
- Newly reported high grade silver and gold assays from historical drilling (see Tables 2 & 3 below) clearly show Horseshoe Lights exploration upside alongside near-term cash flow from DSO start-up

Horseshoe Metals Limited (ASX: HOR) (the 'Company') is pleased to report that recently completed assaying of Direct Shipping Ore ('DSO') samples from the Horseshoe Lights Copper-Gold Project (HSL) in Western Australia has highlighted outstanding precious metal (Au and Ag) grades.

The existing DSO copper stockpiles were assayed for gold and silver material following recent discussions with potential offtake partners (including three new parties engaged since January 2026); these discussions have outlined the potential for these highly valuable Au and Ag credits to be paid in addition to the existing Cu content at HSL.

Assaying of Au and Ag in pulps remaining from composite samples provided to customers (see release dated 31 October 2023) has confirmed the potential for **significant Au and Ag credits up to 2.56 g/t Au and 107.3 g/t Ag respectively** (see Table 1 below).

**General Manager of Oxide Copper Operations Steven Sickerdick commented:** "The precious metal assay results of our DSO stockpile composite samples are outstanding with high-grade gold and silver credits adding considerable value to the project and a

#### BOARD OF DIRECTORS

Ms Kate Stoney  
Non-Executive Director,  
Chief Financial Officer &  
Joint Company Secretary

Mr Seldon Mart  
Non-Executive Director

Mr Peter Walker  
Non-Executive Director

Mr Josh Merriman  
Joint Company Secretary

#### HORSESHOE METALS LIMITED

ABN 20 123 133 166  
Level 2, 50 Kings Park Rd  
West Perth WA 6005

T: +61 8 6241 1844  
F: +61 8 6241 1811  
E: info@horseshoemetals.com.au

www.horseshoemetals.com.au

new potential revenue stream from the sale of the stockpiles of existing surface material, the amount of which is significant. Over the past 12 months, we have taken a disciplined approach to the commencement of DSO operations, with a key rationale for start-up being a sustainable copper price above \$US6.00/lb. The current strength in the copper market, combined with the addition of gold and silver credits, has the potential to deliver significant value for our shareholders. Discussions with several potential offtake and funding partners now have considerable impetus given the demand for copper is structurally strong and highly elevated. As such, shareholders are well-placed to benefit given Horseshoe Lights is one of the few near-term copper production stories with a multi-stage development profile. We look forward to providing shareholders with more updates as well as further context with respect to these newly released and very compelling high-grade gold and silver drill assays”.

## Precious Metal Content – Copper DSO Material

Au and Ag analysis was completed on remaining sample pulps of composite DSO samples and confirms significant precious metal credits highlighted in Table 1.

Importantly, review of assays historic Reverse Circulation (RC) and Diamond (DDH) drilling has further confirmed significant Au and Ag content with high-grade DSO intercepts (Tables 2 and 3). It is clear that the DSO mineralisation is a discrete zone or “pipe” within the much broader copper mineralised zone that likely extends below the base of the existing open pit which was mined to about 200 metres below surface.

Samples from RC and Diamond drilling completed by the Company since 2010 have not been routinely assayed for Au and Ag. Assessment of drilling is being completed to determine samples that require further analysis and determine availability of sample pulps held by the laboratories that completed the Cu assays.

**Table 1: Surface DSO Grab Samples – New Au and Ag Results**

Sample ID	North	East	Cu ppm	Cu %	New Results			Description
					Au ppm	Ag ppm	S %	
HH00008	7194317	663392	403200	40.32	No Sample Available			C20 - Typical lump chalcocite (see image 1)
<b>DSO Copper Marketing Sample</b>								
HLM1 &2	7193738	662697	HLM1 372300	HLM1 <b>37.23</b>	HLM1 <b>2.56</b>	HLM1 <b>107.3</b>	HLM1 31.9	DSO copper chalcocite marketing sample composite - various locations (see release dated 31 <sup>st</sup> October 2023)  HLM1 and 2 are 10kg splits from a ~27kg bulk composite sample
	7193766	662793						
	7193800	662816						
	7194572	662980	HLM2 390600	HLM2 <b>39.06</b>	HLM2 <b>2.24</b>	HLM2 <b>96.7</b>	HLM2 31.1	
	7194388	663343						
	7194126	663455						
	7193953	663427						
7193821	663814							

Notes:

Coordinate system GDA94z50, located on high resolution (2.5cm) photography.

Lab Method Cu = ICP005, Au = FA30, Ag = ICP003, S = ICP004

## Horseshoe Lights Copper-Gold Project Summary

The Horseshoe Lights Copper-Gold Project is the original Cu/Au VMS discovery in the Bryah Basin and is located approx. 60 km west of DeGrussa Copper Mine owned by Sandfire Resources (ASX: SFR). Past production from Horseshoe Lights includes around **316,000 oz Au & 55 kt Cu metal** in two phases of mining, and the deposit contains a current *in situ* resource **128 kt Cu metal @ 1.0% (0.5% cut-off) and 36,000 oz Au** (refer Table 4).

The surface materials have previously been broadly grouped as follows (Figure 1):

<b>Copper - Gold</b>	Flotation tailings, Vat 2, M15/C20 Stockpiles and North Dump
<b>Copper</b>	Subgrade, rehandle, Low-grade oxide and sulphide stockpiles
<b>Gold</b>	Gold tailings, leach vats, low grade, rehandle and ROM stockpiles

For additional background on the Horseshoe Lights Project please refer to ASX releases:

12/09/2018	"Exploration Update- Horseshoe Lights Project"
06/08/2021	"Horseshoe Lights Exploration Activities Update"
10/09/2021	"Horseshoe Lights Phase 1 Auger Programme Completed"
13/09/2021	"Horseshoe Lights Phase 1 RC Drilling Programme Completed"
29/10/2021	"Horseshoe Lights RC Drilling Results"
26/11/2021	"Horseshoe Lights Phase 1 Stockpile Results Received"
21/02/2022	"Horseshoe Metals Successful Relisting"
03/03/2022	"Horseshoe Lights Activities Update"
11/03/2022	"Horseshoe Lights Copper-Gold Resource Grade-Tonnage Review"
21/04/2022	"RC Drilling Underway at Horseshoe Lights Project"
19/05/2022	"RC Drilling Campaign Complete at HSL Project"
11/08/2022	"Significant Drilling Results in Copper-Gold Surface Material at Horseshoe Lights"
31/08/2022	"Outstanding Copper Results at Horseshoe Lights"
11/10/2022	"Review Confirms Broad Zones of Copper Mineralisation"
27/10/2022	"Broad Zones of Copper up to 8.3%"
17/11/2022	"RC Drilling Commences at Main Zone, Motters and North Dump"
09/03/2023	"Outstanding Copper Results – Main Zone and Motters at Horseshoe Lights"
31/10/2023	"High-Grade Surface Material Underpins DSO Strategy"
23/04/2024	"DSO Strategy to Accelerate Horseshoe Lights Copper Project"
26/05/2025	"Infrastructure Recommissioning Well Advanced at HSL"
28/11/2024	"Horseshoe Lights Project Expanded – High-Grade Cu & Au Targets"
20/01/2025	"Horseshoe Lights Project Commercial Development"
05/05/2025	"Gold Surface Materials processing Update"
26/05/2025	"Infrastructure Recommissioning Well Advanced at HSL"
12/06/2025	"Option Exercised – Gold Surface Materials Processing Rights"
02/07/2025	"DSO Mining Approval Granted for Horseshoe Lights"
05/08/2025	"Operations and Exploration Update Horseshoe Lights"
11/08/2025	"Appointment of General manager – Oxide Copper Operations"
01/09/2025	"RC Drilling Underway at Horseshoe Lights Copper-Gold Project"
30/10/2025	"RC Drilling Confirms Motters Upside"
06/11/2025	"New Assays Confirm Shallow, Broad Copper at Motters Zone"
12/11/2025	"More Shallow, Broad Copper Zones at Horseshoe Lights"
11/12/2025	"Drilling Continues to Deliver More Broad Oxide Copper Zones"
18/02/2026	"New Copper Exploration Target – Motters Zone"

The Board of Directors of HOR has authorised this announcement to be given to the ASX.

- ENDS -

**Further information, please contact:**

***Enquiries***

**Kate Stoney**

**Non-Executive Director/**

**Company Secretary**

**E: [info@horseshoemetals.com.au](mailto:info@horseshoemetals.com.au)**

**T +61 (0) 8 6241 1844**

**Sam Burns**

**Six Degrees Investor Relations**

**T +61 (0) 400 164 067**



***Image 1: Nth of C20 dump - part of composite sample (7,194,388mN 663,343mE)***

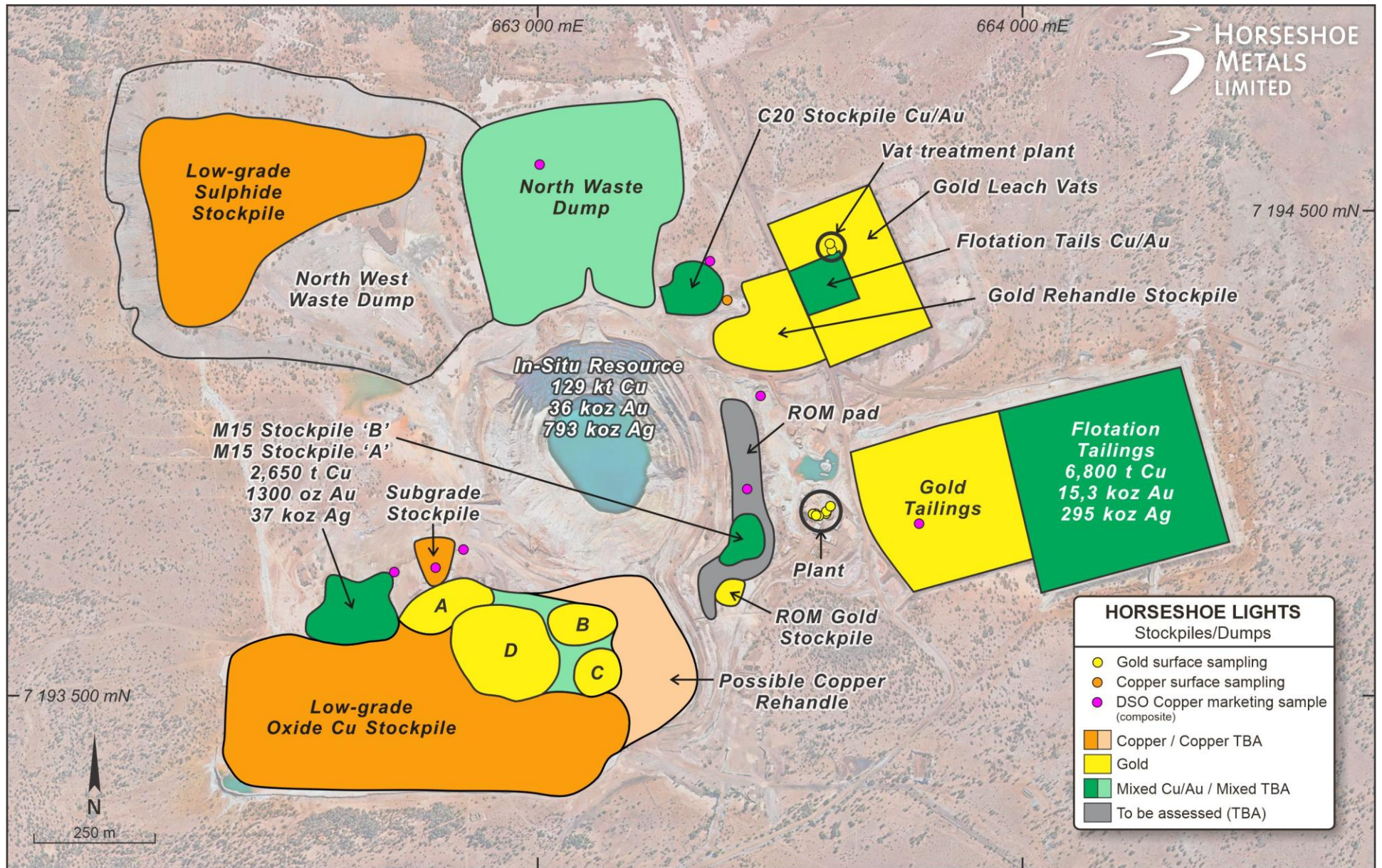


Figure 1 – Surface Stockpiles and Dumps showing Sample Locations

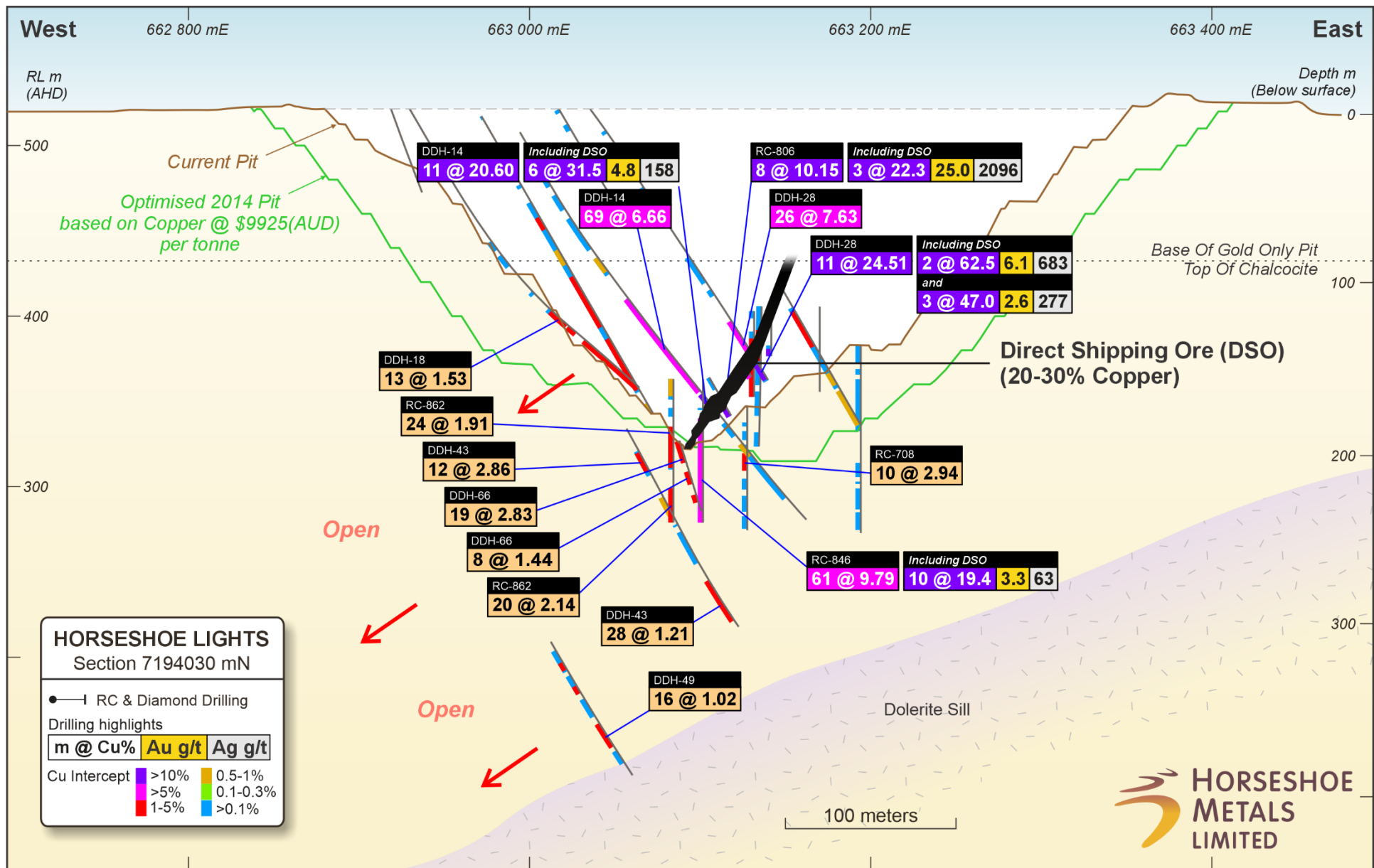


Figure 2 – Cross Section showing High Grade DSO/Chalcopyrite shoot and associate Gold & Silver values within broad Copper Halo

**Table 2: Section 7194030 mN Highlights**

Hole ID	Drill Type	North	East	RL	Dip	Azimuth	Depth	From	To	Length	Cu %	Au g/t	Ag g/t	DSO	Mined		
DDH-14	DD	7194038	662987	522	-60	92	338	132	201	69	6.66	0.55	5	DSO	Yes		
								198	209	11	20.6	4.73	102		Yes		
								including		202.8	209	6.2	31.4		4.82	158	Yes
DDH-18	DD	7194038	662930	521	-60	92	258	144	156.5	12.5	1.53	0.12	2		No		
DDH-28	DD	7194028	663035	523	-53	92	192	151	177	26	7.63	0.26	154	DSO	Yes		
								178	189	11	24.5	12.2	202		Yes		
								including		178	180	2	62.6		6.06	683	Yes
								and		186	189	3	47.0		2.58	277	Yes
DDH-43	DD	7194008	662952	521	-60	89	361.5	231	243	12	2.86	0.20	6	DSO	No		
								317	345	28	1.21	0.04	2		No		
DDH-49	DD	7194007	662856	519	-70	89	440.4	404	420	16	1.02	0.02	1		No		
DDH-66	DD	7194014	663081	349	-65	45	69.9	19	38	19	2.83	0.11	11	DSO	No		
								44	52	8	1.44	0.04	1		No		
RC-708	RC	7194034	663128	348	-90	0	73	28	38	10	2.94	0.07	4		No		
RC-806	RC	7194020	663096	381	-60	82	45	37	45	8	10.2	17.4	1214	DSO	Yes		
								including		40	43	3	22.3		25.0	2096	Yes
RC-846	RC	7194028	663102	363	-90	0	84	23	84	61	9.79	0.86	13	DSO	Partial		
								including		24	34	10	19.4		3.31	63	Yes
RC-862	RC	7194029	663084	363	-90	0	84	28	52	24	1.91	0.14	3	DSO	No		
								64	84	20	2.14	0.04	1		No		
RC-819	RC	7193964	663156	369	-90	0	35	22	30	8	22.0	12.0	208	DSO	Yes		
RC-821	RC	7194003	663128	372	-90	0	70	17	23	6	35.1	17.8	1267	DSO	Yes		
RC-834	RC	7194004	663104	369	-90	0	55	30	41	11	26.1	3.14	207	DSO	Yes		

**Notes**

No Cu upper cut applied

Coordinate system GDA94z50

Mined – Yes = Mined by previous operators, No = Intercept is in-situ, Partial = Part of intercept is in-situ.

DSO = Direct Shipping Ore = Intercept corresponds to mine grade control plans indicating DSO

1 = Drillhole was collared in pit during mining event

**Table 3: Other DSO Highlights**

Hole ID	Drill Type	North	East	RL	Dip	Azimuth	Depth	From	To	Length	Cu %	Au g/t	Ag g/t	DSO	Mined
RC-277	RC	7193989	663207	426	-90	0	78	6	10	4	27.5	11.0	1280	DSO	Yes
RC-516	RC	7194039	663117	455	-80	92	78	44	54	10	24.6	0.33	54	DSO	Yes
RC-573	RC	7194003	663136	406	-90	0	22	0	20	20	45.3	1.98	123	DSO	Yes
RC-574	RC	7193976	663199	410	-89	270	80	6	12	6	37.3	12.3	733	DSO	Yes
RC-581	RC	7194004	663177	406	-90	270	70	24	34	10	31.9	4.02	109	DSO	Yes
RC-591	RC	7194049	663136	408	-89	270	70	6	12	6	55.5	5.51	NA	DSO	Yes
RC-812	RC	7193988	663162	368	-90	0	45	3	13	10	35.2	6.26	158	DSO	Yes
RC-813	RC	7194055	663094	373	-90	0	40	12	24	12	35.2	2.91	56	DSO	Yes
RC-819	RC	7193964	663156	369	-90	0	35	22	30	8	22.0	12.0	208	DSO	Yes
RC-821	RC	7194003	663128	372	-90	0	70	17	23	6	35.1	17.8	1267	DSO	Yes
RC-834	RC	7194004	663104	369	-90	0	55	30	41	11	26.1	3.14	207	DSO	Yes

**Notes**

No Cu upper cut applied

Coordinate system GDA94z50

Mined – Yes = Mined by previous operators

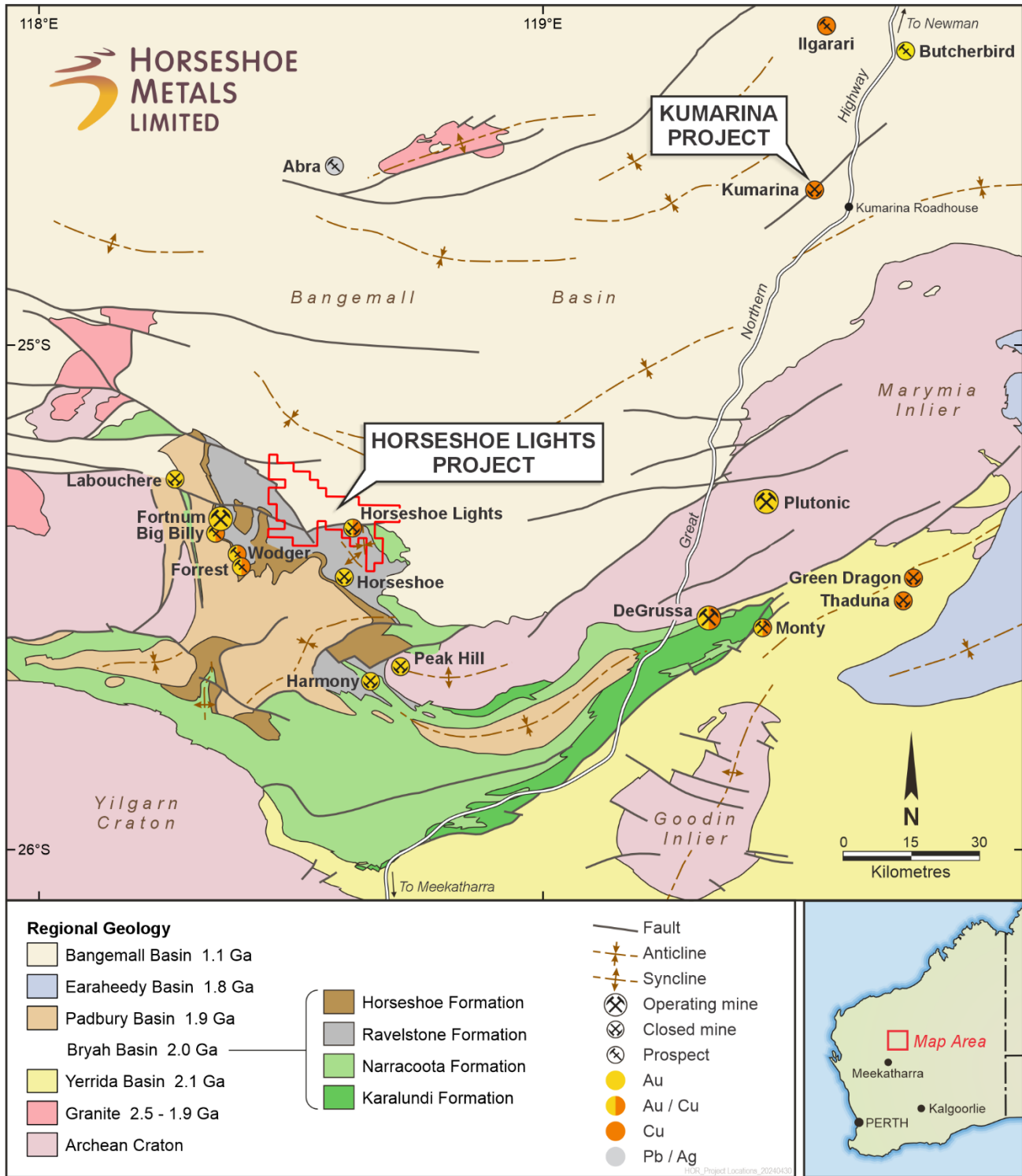
DSO = Direct Shipping Ore = Intercept corresponds to mine grade control plans indicating DSO

NA = Not assayed

1 = Drillhole was collared in pit during mining event

**About Horseshoe Metals Limited**

Horseshoe Metals Limited (ASX:HOR) is a copper and gold-focused Company with a package of tenements covering approximately 500km<sup>2</sup> in the highly prospective Peak Hill Mineral Field, located north of Meekatharra in Western Australian and mineral interests in South Australia. The Company manages the Horseshoe Lights Project and the Kumarina Project in Western Australia, and the Glenloth Gold Project in South Australia.



**Figure 3: Location of Horseshoe Lights Copper-Gold Project and Kumarina Project in the Murchison, WA**

### **About the Horseshoe Lights Project**

The Horseshoe Lights Project includes the historic open pit of the Horseshoe Lights copper-gold mine which operated up until 1994, producing over 300,000 ounces of gold and 54,000 tonnes of contained copper, including over 110,000 tonnes of Direct Shipping Ore (DSO) which graded between 20-30% copper.

The Horseshoe Lights ore body is interpreted as a deformed Volcanogenic Hosted Massive Sulphide (VMS) deposit that has undergone supergene alteration to generate the gold-enriched and copper-depleted cap that was the target of initial mining. The deposit is hosted by quartz-sericite and quartz-chlorite schists of the Lower Proterozoic Narracoota Formation.

Past mining was focused on the Main Zone, a series of lensoid ore zones, which passed with depth from a gold-rich oxide zone through zones of high-grade chalcocite mineralisation into massive pyrite-chalcopyrite. To the west and east of the Main Zone, copper mineralisation in the Northwest Stringer Zone and Motters Zone consists of veins and disseminations of chalcopyrite and pyrite and their upper oxide copper extensions. Table 4 summarises the total Mineral Resources for the Horseshoe Lights Project.

<b>TABLE 4 HORSESHOE LIGHTS PROJECT SUMMARY OF MINERAL RESOURCES AS AT 31 December 2025</b>									
<b>Location</b>	<b>Category</b>	<b>Tonnes (Mt)</b>	<b>Cu (%)</b>	<b>Au (g/t)</b>	<b>Ag (g/t)</b>	<b>Cu metal (tonnes)</b>	<b>Au metal (oz)</b>	<b>Ag metal (k oz)</b>	
<b>In-situ Deposit</b> (0.5% Cu cut-off grade)	<i>Measured</i>	1.73	1.04	0.0	0.5	18,000	1,900	28.8	
	<i>Indicated</i>	2.43	0.95	0.0	0.7	23,200	3,400	52.2	
	<i>Inferred</i>	8.69	1.01	0.1	2.6	87,400	30,700	712.4	
	<b>Total</b>	<b>12.85</b>	<b>1.00</b>	<b>0.1</b>	<b>1.9</b>	<b>128,600</b>	<b>36,000</b>	<b>793.4</b>	
<b>Flotation Tailings</b>	<b>Inferred</b>	<b>1.421</b>	<b>0.48</b>	<b>0.34</b>	<b>6.5</b>	<b>6,800</b>	<b>15,300</b>	<b>294.8</b>	
<b>M15 Stockpiles</b>	<b>Inferred</b>	<b>0.243</b>	<b>1.10</b>	<b>0.17</b>	<b>4.7</b>	<b>2,650</b>	<b>1,300</b>	<b>36.7</b>	
Note: At 0% Cu cut-off grade unless otherwise stated						<b>TOTAL</b>	<b>138,050</b>	<b>52,600</b>	<b>1,124.9</b>

The above Mineral Resource Estimates all meet the reporting requirements of the 2012 Edition of the "Australasian Code for Reporting of Exploration Results, Mineral Resources and Ore Reserves".

### **About the Kumarina Project**

The copper deposits at the Kumarina Project were discovered in 1913 and worked intermittently until 1973. The workings extend over nearly 5km as a series of pits, shafts and shallow open cuts. At the main Kumarina Copper Mine, the workings are entirely underground with drives from the main shaft extending for some 200m in the upper levels and for about 100m in the lower levels at a depth of 49m below surface.

Incomplete records post-1960s make it difficult to estimate the total copper production from the workings. However, indications are that the Kumarina Copper Mine was the second largest producer in the Bangemall Basin group of copper mines. Recorded production to the late 1960s is 481t of copper ore at a high-grade of 37.0% Cu and 2,340t at a grade of 17.51% Cu. An initial Mineral Resource Estimate for the Rinaldi deposit was completed by the Company in 2013 (see 30 June 2013 Quarterly Report announced on 31 July 2013). The total Measured, Indicated and Inferred Mineral Resource Estimate at Kumarina is shown below.

**TABLE 5  
KUMARINA PROJECT  
SUMMARY OF MINERAL RESOURCES  
AS AT 31 December 2025**

Location	Category	Tonnes (t)	Cu (%)	Cu metal (tonnes)
<b>Rinaldi Prospect (0.5% Cu cut-off)</b>	<i>Measured</i>	<i>415,000</i>	<i>1.46</i>	<i>6,100</i>
	<i>Indicated</i>	<i>307,000</i>	<i>1.16</i>	<i>3,500</i>
	<i>Inferred</i>	<i>114,000</i>	<i>0.9</i>	<i>1,000</i>
	<b>Total</b>	<b>835,000</b>	<b>1.3</b>	<b>10,600</b>

The Mineral Resource Estimate meets the reporting requirements of the 2012 Edition of the “Australasian Code for Reporting of Exploration Results, Mineral Resources and Ore Reserves”

### **Forward Looking Statements**

Horseshoe Metals Limited has prepared this announcement based on information available to it. No representation or warranty, express or implied, is made as to the fairness, accuracy, completeness or correctness of the information, opinions and conclusions contained in this announcement. To the maximum extent permitted by law, none of Horseshoe Metals Limited, its directors, employees or agents, advisers, nor any other person accepts any liability, including, without limitation, any liability arising from fault or negligence on the part of any of them or any other person, for any loss arising from the use of this announcement or its contents or otherwise arising in connection with it. This announcement is not an offer, invitation, solicitation or other recommendation with respect to the subscription for, purchase or sale of any security, and neither this announcement nor anything in it shall form the basis of any contract or commitment whatsoever. This announcement may contain forward-looking statements that are subject to risk factors associated with gold exploration, mining and production businesses. It is believed that the expectations reflected in these statements are reasonable but they may be affected by a variety of variables and changes in underlying assumptions which could cause actual results or trends to differ materially, including but not limited to price fluctuations, actual demand, currency fluctuations, drilling and production results, reserve estimations, loss of market, industry competition, environmental risks, physical risks, legislative, fiscal and regulatory changes, economic and financial market conditions in various countries and regions, political risks, project delay or advancement, approvals and cost estimates.

### **Competent Persons Statement**

The information in this report that relates to the Exploration Results and Mineral Resources at the Horseshoe Lights and Kumarina Projects is based on information reviewed by Mr Michael Fotios, who is a member of the Australian Institute of Mining and Metallurgy. Mr Fotios is a consultant to Horseshoe Metals Limited and has sufficient experience which is relevant to the style of mineralisation and types of deposit under consideration and to the activity he is undertaking to qualify as Competent Persons as defined in the 2012 Edition of the ‘Australasian Code for Reporting of Exploration Results, Mineral Resources and Ore Reserves (JORC Code 2012)’. Mr Fotios consents to the inclusion of the information in the form and context in which it appears.

The information in this report that relates to the Horseshoe Lights Project surface stockpile Mineral Resources is based on information compiled by a previous employee of Horseshoe Metals Limited and reviewed by Mr Fotios, who has sufficient experience which is relevant to the style of mineralisation and types of deposit under consideration and to the activity he is undertaking to qualify as Competent Persons as defined in the 2012 Edition of the ‘Australasian Code for Reporting of Exploration Results, Mineral Resources and Ore Reserves (JORC Code 2012)’. Mr Fotios consents to the inclusion of the data in the form and context in which it appears. The information was previously issued in announcements released to the ASX on 26 February 2015 and 9 March 2015. The Company confirms that it is not aware of any new information or data that materially affects the information included in the original market announcements. The Company confirms that the form and context in which the findings are presented have not materially modified from the original market announcements.

The information in this report that relates to the Horseshoe Lights Project In-situ Mineral Resources is based on information originally compiled by Mr Dmitry Pertel, an employee of CSA Global Pty Ltd, and reviewed by Mr Fotios. This information was originally issued in the Company’s ASX announcement “40% increase in Copper Resource at Horseshoe Lights Copper/Gold Project”, released to the ASX on 5 June 2013, and first disclosed under the JORC Code 2004. This information was subsequently disclosed under the JORC Code 2012 in the Company’s ASX release “Quarterly Report Period Ended 30 June 2013”, released on 31 July 2013. The Company confirms that it is not aware of any new information or data that materially affects the information included in the original market announcements. The Company confirms that the form and context in which the findings are presented have not materially modified from the original market announcements.

The information in this report that relates to the Kumarina Project (Rinaldi Prospect) Mineral Resources is based on information compiled by or under the supervision of Mr Robert Spiers, an independent consultant to Horseshoe Metals Limited and a then full-time employee and Director of H&S Consultants Pty Ltd (formerly Hellman & Schofield Pty Ltd), and reviewed by Mr Fotios. The information was originally issued in the Company’s ASX announcement “Horseshoe releases Maiden Mineral Resource Estimate for Kumarina”, released to the ASX on 4 March 2013, and first disclosed under the JORC Code 2004. This information was subsequently disclosed under the JORC Code 2012 in the Company’s ASX release “Quarterly Report Period Ended 30 June 2013”, released on 31 July 2013. The Company confirms that it is not aware of any new information or data that materially affects the information included in the original market announcements. The Company confirms that the form and context in which the findings are presented have not materially modified from the original market announcements.

JORC CODE, 2012 EDITION

Section 1 Sampling Techniques and Data

Criteria	JORC Code explanation	Commentary
<p><b>Sampling techniques</b></p>	<ul style="list-style-type: none"> <li>Nature and quality of sampling (e.g. cut channels, random chips, or specific specialised industry standard measurement tools appropriate to the minerals under investigation, such as down hole gamma sondes, or handheld XRF instruments, etc). These examples should not be taken as limiting the broad meaning of sampling.</li> <li>Include reference to measures taken to ensure sample representivity and the appropriate calibration of any measurement tools or systems used.</li> <li>Aspects of the determination of mineralisation that are Material to the Public Report. In cases where 'industry standard' work has been done this would be relatively simple (e.g. 'reverse circulation drilling was used to obtain 1 m samples from which 3 kg was pulverised to produce a 30 g charge for fire assay'). In other cases more explanation may be required, such as where there is coarse gold that has inherent sampling problems. Unusual commodities or mineralisation types (e.g. submarine nodules) may warrant disclosure of detailed information.</li> </ul>	<ul style="list-style-type: none"> <li><b>HOR 2025</b> RC Drilling Motters, was undertaken as industry standard reverse circulation drilling, with 1m samples were split from the cyclone, with residual sample collected in plastic bags. Analysis for Cu by 4 Acid Digest, NAGROM method ICP003</li> <li><b>HOR 2021</b> RC Drilling - samples were collected to best represent the source material. Samples were sent to Nagrom Perth for Au analysis by ICP-OES (Method ICP-008), 50g charge with a lower detection limit of 0.001 ppm NAGROM method – ICP008; 40gm Aqua Regia Digest-suite included Au, Ag, Ca, Cu, Fe, Hg, Mg, Pb, S, Se and Zn. Samples were pre-screened at hole for Cu for subsequent assay by portable XRF.</li> <li><b>HOR 2023</b> DSO Grab Samples – Grab samples were collected from various mine site stockpiles and composited into a bulk sample for assaying. Samples were analysed by Nagrom Perth for Cu, Au Ag and S by methods ICP005, FA30, ICP003 and ICP004, respectively.</li> <li><b>HOR 2022</b> RC Drilling - samples were collected to best represent the source material. Samples were sent to Bureau Veritas Perth for Au, Cu, Ag and S analysis by BV method AR101 with either ICP-MS or ICP-AES/MS finish. Samples were pre-screened at hole for Cu for subsequent assay by portable XRF.</li> <li><b>HOR 2021/22</b> RC Drilling -undertaken as industry standard reverse circulation drilling, with 1m samples were split from the cyclone, with residual sample collected in plastic bags</li> <li><b>HOR 2021</b> Auger drilling- samples were collected by spiral auger bit and shafts with flights 3 ½ “in diameter. Samples were collected every metre from a collared liner base of around 50cm x 40cm, into a large labelled plastic bag, and the base swept clean before proceeding with the next metre. Sub-sampling into numbered calico bag was via an aluminium scoop collecting around 500-750gm of sample from the plastic bag, which was retained at the hole over the collar.</li> <li><b>HOR 2021</b> Auger drilling Depth control was at the decimetre level, with depth checked against a metre stick</li> <li><b>HOR 2021</b> Auger drilling was undertaken by experienced contractors Gyro Australia and is considered industry standard with a geochemical auger rig used to obtain 1 m samples of 5-10kg from a vertical auger hole of less than 6m in this instance. Sub samples of 500-750gm were taken via scoop and pulverised at the laboratory to produce a 50 g charge for fire assay analysis for gold only.</li> </ul> <p><b>Historic</b></p> <ul style="list-style-type: none"> <li>All activities completed by Horseshoe Gold Mine Pty Ltd which was a wholly owned subsidiary of Barrack Mines Ltd between 1983-91 and Sabminco NL between 1992-1995. Barrack Mines Ltd drilled 43 diamond holes for 15,353m, 638 Reverse Circulation holes for 55,343m and 19 channel samples for 520m between 1983 and 1990.</li> <li>Sabminco NL drilled 14 HQ &amp; NQ diamond holes for 2672.25m and 108 Reverse Circulation holes for 9,244m between 1992 and 1993. Initial hole spacing was on a nominal spacing of 50 x 50m with infill as required in the pit area.</li> <li>Reverse Circulation samples were collected mainly on 1m &amp; 2m intervals and prepared for assaying at the onsite laboratory of Horseshoe Gold Mine Pty Ltd, and/or at accredited laboratories.</li> <li>Diamond core is HQ, NQ and BQ was mainly half cut sampled on geological intervals (0.1m to 3.1m) and assayed using the same techniques as the reverse circulation samples.</li> <li>RAB drilling sampled and composited on intervals from 2 to 4m, unknown contractors.</li> <li>The majority of holes are orientated perpendicular to mineralisation which is mainly toward mine grid east and north east at various inclinations.</li> </ul> <p><b>Bedrock Geochemical Sampling</b></p> <ul style="list-style-type: none"> <li>1984 Homestake RAB bedrock geochemical drilling on a 160m x 20m grid pattern. Depth of holes ranged between 2m and 5m. The last metre of each hole was sampled and assayed for Au by Fire assay and Cu, Pb, As, and Ba by AAS. (WAMEX report a15731)</li> </ul>

Criteria	JORC Code explanation	Commentary
		<p><b>Rock Chip Sampling</b></p> <ul style="list-style-type: none"> <li>• Samantha Exploration – Unknown sampling and assay technique.</li> <li>• Homestake 1984 – Systematic sampling of Jasperoid units. Analysis conducted AAL, Au by fire assay, multi elements by AAS</li> <li>• Horseshoe Gold Mine - Unknown sampling and assay technique.</li> <li>• Horseshoe Metals – Standard rock chip sampling technique, Analysis by Nagrom, Au and multi elements by method ICP008</li> </ul>
<p><b>Drilling techniques</b></p>	<ul style="list-style-type: none"> <li>• <i>Drill type (eg core, reverse circulation, open-hole hammer, rotary air blast, auger, Bangka, sonic, etc) and details (eg core diameter, triple or standard tube, depth of diamond tails, face-sampling bit or other type, whether core is oriented and if so, by what method, etc).</i></li> </ul>	<ul style="list-style-type: none"> <li>• <b>HOR 2025</b> RC Drilling Motters, was undertaken as industry standard reverse circulation drilling, with iDrilling completing work with a HYDCO 350 truck mounted rig with 350/1250 onboard compressor, and separate 900/1150 booster. Face-sampling drill bit size varied from 143mm to 138mm.</li> <li>• <b>HOR 2021/22</b> RC Drilling - was undertaken as industry standard reverse circulation drilling, with iDrilling completing work with a UDR450 track mounted rig and separate 900/1150 booster. Face-sampling drill bit size was 140mm</li> <li>• <b>HOR 2021</b> Auger drilling was completed using a Landcruiser mounted post-hole style auger, capable of at least 10m drill depths. Hole diameters were 3.5”.</li> </ul> <p><b>Historic</b></p> <ul style="list-style-type: none"> <li>• Historical data: With reference to the historical database Barrack Mines Ltd and Sabminco NL used 16 rotary air blast (RAB) holes, 756 reverse circulation (RC) and 57 diamond holes for resource definition and exploration.</li> <li>• No formal drilling reports are available outlining details of RC drill programs during the mining period 1983- 1994 but conversations with original mine personnel suggest that industry standard practices were employed during the mining period 1983-1994.</li> <li>• Diamond drilling is HQ, NQ and BQ core with the majority using Reverse Circulation pre-collars to various depths. Only alpha angles were recorded in geological logs.</li> <li>• Horseshoe Metals; A total of 94 Reverse Circulation holes for 16,059m and 7 diamond drill holes, including 3 diamond tails for 1111.6m were used in the resource calculation. The four diamond holes from surface totalled 1111.6m of HQ diameter core and 5.8m of NQ core. The diamond tails totalled 196.3m of which 39.5m was HQ diameter core and 156.8m of NQ diameter core. Diamond rigs use hydraulic power wireless drilling methods with three and six metre runs.</li> <li>• RAB drilling sampled and composited on intervals from 2 to 4m, unknown contractors.</li> </ul>
<p><b>Drill sample recovery</b></p>	<ul style="list-style-type: none"> <li>• <i>Method of recording and assessing core and chip sample recoveries and results assessed.</i></li> <li>• <i>Measures taken to maximise sample recovery and ensure representative nature of the samples.</i></li> <li>• <i>Whether a relationship exists between sample recovery and grade and whether sample bias may have occurred due to preferential loss/gain of fine/coarse material.</i></li> </ul>	<ul style="list-style-type: none"> <li>• <b>HOR 2025</b> RC Drilling Motters, visually assessed metre recovery, booster used to assist drilling as required, cyclone cleared at clayey interfaces, no sample bias known to have occurred</li> <li>• <b>HOR 2021/22 in situ</b> RC Drilling- Visual inspection of the RC sample volume indicates sample recovery is excellent</li> <li>• <b>HOR 2021/22</b> stockpile RC Drilling- Visual inspection of the RC sample volume indicates sample recovery is moderate, but considered representative of the volume being tested</li> <li>• <b>HOR 2021</b> Auger drilling -Visual inspection of the auger sample volume indicates sample recovery is excellent</li> <li>• <b>HOR 2021</b> RC Drilling -all samples drilled dry with minimal clayey component. All RC samples samples are visually checked for recovery, moisture and contamination</li> <li>• <b>HOR 2021</b> Auger drilling -Visual inspection of the auger sample volume indicates sample recovery is excellent. 1985 RC Vat sampling programme- stated as ‘satisfactory’. Auger samples are visually checked for recovery, moisture and contamination. Hole sides were conditioned where possible, and sample bases cleaned before proceeding. 1985 RC Vat sampling programme- not known.</li> <li>• <b>HOR 2021</b> RC Drilling - No potential for sample bias was observed, with no fine/coarse separation</li> <li>• <b>HOR 2021</b> Auger drilling -Ground conditions for auger drilling are good and drilling returned consistent size samples. No potential for sample bias was observed, with no fine/coarse separation. 1985 RC Vat sampling programme- not known</li> </ul> <p><b>Historic</b></p> <ul style="list-style-type: none"> <li>• No formal recovery technique is recorded for RC or RAB drilling by either Barrack Mines Ltd or Sabminco NL.</li> </ul>

Criteria	JORC Code explanation	Commentary
		<ul style="list-style-type: none"> <li>• Diamond core recovery statistics are recorded in hard copy for the majority of historical diamond holes. No formal assessment of core recovery has been made to date.</li> <li>• No formal report or information is available but conversations with original mine personnel suggest that industry standard practices were employed during the mining period 1984-1995.</li> </ul>
<b>Logging</b>	<ul style="list-style-type: none"> <li>• <i>Whether core and chip samples have been geologically and geotechnically logged to a level of detail to support appropriate Mineral Resource estimation, mining studies and metallurgical studies.</i></li> <li>• <i>Whether logging is qualitative or quantitative in nature. Core (or costean, channel, etc) photography.</i></li> <li>• <i>The total length and percentage of the relevant intersections logged.</i></li> </ul>	<ul style="list-style-type: none"> <li>• <b>HOR 2025 RC Drilling</b> Motters <ul style="list-style-type: none"> <li>○ RC samples were geologically logged in the field to a level consistent with the supporting of respective Mineral Resource Estimation</li> <li>○ Quantitative, supported by retention of chip trays for photography</li> </ul> </li> <li>• <b>HOR 2021/22 RC Drilling</b> - logged to a level to support appropriate Mineral Resource estimation, mining studies, and metallurgical studies. C20 stockpiles and dumps not logged</li> <li>• <b>HOR 2021/22 RC Drilling</b> - logged to a level to support appropriate Mineral Resource estimation, mining studies, and metallurgical studies.</li> <li>• <b>HOR 2021</b> Auger drilling - N/A</li> <li>• <b>HOR 2021/22 RC Drilling</b> - All drilling logged to a level to support appropriate Mineral Resource estimation, mining studies, and metallurgical studies.</li> <li>• <b>HOR 2021</b> Auger drilling -NA.</li> <li>• <b>Historic</b></li> <li>• All reverse circulation, diamond drilling and RAB drilling was logged to a level of detail considered sufficient at the time. However, the nature of deposit that has been subject to strong weathering and alteration makes identification of stratigraphical units very difficult. The lack of an early stratigraphical interpretation model and limited understanding of the deposit style has also caused inconsistency in the logging by various geologists. As a consequence, only the overlying sediments and underlying shale and dolerite have been logged according to their primary rock type. Barrack Mines Ltd and Sabminco NL used similar mine-specific geological codes to describe the geological units. A metamorphic and alteration methodology was used to describe the volcanic stratigraphy but interpretation of the various descriptions is very difficult.</li> <li>• Original logging of historical diamond core described lithology, colour and mineralisation content as well as some geotechnical data including core recovery, RQD data and alpha angle measurements. Approximately 10% of the original diamond holes in areas outside the existing pit have been re-logged and photographed so far. Diamond core for Horseshoe Metals holes was logged for recovery and RQD. Information on structure, lithology and alteration zones was recorded. Diamond core trays are stored on site for future reference.</li> <li>• Original logging of reverse circulation, diamond core and RAB drilling describes lithology, colour and mineralisation content only in handwritten form on hard copies.</li> </ul>
<b>Sub-sampling techniques and sample preparation</b>	<ul style="list-style-type: none"> <li>• <i>If core, whether cut or sawn and whether quarter, half or all core taken.</i></li> <li>• <i>If non-core, whether riffled, tube sampled, rotary split, etc and whether sampled wet or dry.</i></li> <li>• <i>For all sample types, the nature, quality and appropriateness of the sample preparation technique.</i></li> <li>• <i>Quality control procedures adopted for all sub-sampling stages to maximise representivity of samples.</i></li> <li>• <i>Measures taken to ensure that the sampling is representative of the in situ material collected, including for instance results for field duplicate/second-half sampling.</i></li> </ul>	<ul style="list-style-type: none"> <li>• <b>HOR 2025 RC Drilling</b> Motters <ul style="list-style-type: none"> <li>○ Non-core drilling, generally sampled dry, wet samples noted</li> <li>○ Sample preparation technique considered appropriate to sample type</li> <li>○ Cyclone cleaning routinely carried out during drilling</li> <li>○ Sample sizes considered appropriate to the grain size of the material being sampled</li> </ul> </li> <li>• <b>HOR 2021/22 RC Drilling</b> -Non-core drilling, generally sampled dry, wet samples noted; Sample preparation technique considered appropriate to sample type; Cyclone cleaning routinely carried out during drilling; No field duplication undertaken to date, further work planned; sample sizes considered appropriate to the grain size of the material being sampled.</li> <li>• <b>HOR 2021</b> Auger drilling- Whole samples collected and swept off rubber lined collar pad; Auger drilling All auger samples drilled dry for the purposes of sampling. Sample sizes considered appropriate to the grain size of the material being sampled. 1985 RC Vat sampling programme- not known</li> <li>• RC and Auger sample analysis follows industry best practice whereby samples are sorted, reconciled, placed onto trolleys and dried at 105°C in an oven, then crushed to ~2mm and a 500-700g subsample taken by rotary division for pulverisation. The subsample was</li> </ul>

Criteria	JORC Code explanation	Commentary
	<ul style="list-style-type: none"> <li>Whether sample sizes are appropriate to the grain size of the material being sampled.</li> </ul>	<p>pulverised &gt;90% passing 75µm using bowl-and-disc type mills, and ~200g of pulverised sample was taken for analysis. The technique is considered appropriate for the process of sub-sampling. 1985 RC Vat sampling programme- not known</p> <ul style="list-style-type: none"> <li>Sub sampling stages are considered appropriate for the representivity of samples.</li> <li><i>In situ</i> RC and Auger sample analysis -Residuals and original samples sources retained for checks. C20 and dump stockpiles original metre samples not retained</li> <li>RC and Auger sample analysis-The sample size is considered industry standard for base and precious metal mineralisation.</li> </ul> <p><b>Historic</b></p> <ul style="list-style-type: none"> <li>All diamond core sampled intervals were half core cut for HQ, NQ and BQ diameter.</li> <li>No formal report or information is available but conversations with original mine personnel suggest that industry standard practices were employed during the mining period 1984-1995.</li> </ul>
<p><b>Quality of assay data and laboratory tests</b></p>	<ul style="list-style-type: none"> <li>The nature, quality and appropriateness of the assaying and laboratory procedures used and whether the technique is considered partial or total.</li> <li>For geophysical tools, spectrometers, handheld XRF instruments, etc, the parameters used in determining the analysis including instrument make and model, reading times, calibrations factors applied and their derivation, etc.</li> <li>Nature of quality control procedures adopted (e.g. standards, blanks, duplicates, external laboratory checks) and whether acceptable levels of accuracy (i.e. lack of bias) and precision have been established.</li> </ul>	<ul style="list-style-type: none"> <li><b>HOR 2025</b> RC Drilling Motters <ul style="list-style-type: none"> <li>Cu by 4 Acid Digest, NAGROM method ICP003</li> <li>Standards and Blanks submitted at minimum once each per hole; acceptable levels of accuracy established.</li> </ul> </li> <li><b>HOR 2021</b> RC Drilling-- RC samples were submitted to Nagrom Laboratory, an ISO_9001:2015 assay laboratory and mineral processor for analysis by Method ICP008; 40gm Aqua Regia Digest- suite included Au, Ag, Ca, Cu, Fe, Hg, Mg, Pb, S, Se and Zn. Aqua Regia digest is considered an effective but partial digestion technique. C20 stockpiles analysed by ICP008 for Copper, Gold only</li> <li><b>HOR 2022</b> RC Drilling- samples were collected to best represent the source material. Samples were transported to Bureau Veritas (BV) Kalgoorlie for preparation then BV Perth for Au, Cu, Ag and S analysis by BV method AR101 with either ICP-MS or ICP-AES/MS finish. Samples were pre-screened at hole for Cu for subsequent assay by portable XRF.</li> <li><b>HOR 2021</b> Auger drilling -Auger samples were submitted to Nagrom Laboratory, an ISO_9001:2015 assay laboratory and mineral processor for analysis by Method FA50. 1985 RC Vat sampling programme- Fire assay analysis conducted by Classic Laboratories Pty Ltd, a NATA registered laboratory. Fire assay for gold is considered a total digestion technique. Vat 2 samples assayed by ICP008 for Copper, Gold only</li> <li><b>HOR 2021/22</b> RC Drilling- Standards and Blanks submitted at minimum once each per hole; acceptable levels of accuracy established. C20 and Dump Stockpile drilling- Standards submitted every 50 samples, acceptable standards of accuracy established</li> <li><b>HOR 2021</b> Auger drilling- Auger sampling was submitted with two standards per 100 samples, and 1 blank per 100, and acceptable levels of accuracy and precision have been established. 1985 RC Vat sampling programme- not known</li> </ul> <p><b>Historic</b></p> <ul style="list-style-type: none"> <li>Historical procedures: Barrack Mines Ltd and Sabminco NL predominantly used two laboratories to assay diamond drill core and RC drill cuttings. The majority of samples were processed and assayed at the on-site Horseshoe Gold Pty Ltd mine laboratory</li> <li>No geophysical, spectral or XRF data is available for the historical database.</li> <li>No formal report or information is available but conversations with original mine personnel suggest that industry standard practices were employed during the mining period 1984-1995.</li> </ul>
<p><b>Verification of sampling and assaying</b></p>	<ul style="list-style-type: none"> <li>The verification of significant intersections by either independent or alternative Company personnel.</li> <li>The use of twinned holes.</li> <li>Documentation of primary data, data entry procedures, data verification, data storage (physical and electronic) protocols.</li> <li>Discuss any adjustment to assay data.</li> </ul>	<ul style="list-style-type: none"> <li><b>HOR 2025</b> RC Drilling Motters <ul style="list-style-type: none"> <li>Significant intersections verified by multiple company personnel</li> <li>Paper logs of primary data transferred to digital storage and stored, verified by alternate company personnel; electronic records managed by company personnel at Perth office.</li> <li>No adjustments have been made to the data as received from the laboratory.</li> </ul> </li> <li><b>HOR 2021/22</b> RC Drilling- -Significant intersections verified by multiple Company personnel Some holes approximately twinning historic drilling Paper logs of primary data transferred to digital storage and stored, verified by alternate Company personnel; electronic records managed</li> </ul>

Criteria	JORC Code explanation	Commentary
		<p>by Company personnel at Perth office. No adjustments have been made to the data as received from the laboratory</p> <ul style="list-style-type: none"> <li>• <b>HOR 2021</b> Auger drilling- Auger significant intersections and tabulations were confirmed by alternative Company personnel from first principals. 1985 RC Vat sampling programme- not known All auger drilling and sample data is captured in the field, then entered using established templates and verified in Perth office before upload into database. 1985 RC Vat sampling programme- not known</li> </ul> <p><b>Historic</b> No formal report or procedure is available for the historical data but verification of significant intersections is considered to have been the duty of the senior mine geologist at the time. There is no information or formal report detailing how this process worked. The assumption is that during the mining period all assays from the Horseshoe Gold Mine lab had been handwritten on the geological logs along with associated sample number. These assays would have been subsequently hand entered into an ASCII format.</p>
<p><b>Location of data points</b></p>	<ul style="list-style-type: none"> <li>• <i>Accuracy and quality of surveys used to locate drill holes (collar and down-hole surveys), trenches, mine workings and other locations used in Mineral Resource estimation.</i></li> <li>• <i>Specification of the grid system used.</i></li> <li>• <i>Quality and adequacy of topographic control.</i></li> </ul>	<ul style="list-style-type: none"> <li>• <b>HOR 2025</b> RC Drilling Motters <ul style="list-style-type: none"> <li>○ Drillholes were located using a Garmin hand held GPS, accuracy approximately +/- 3m</li> <li>○ GPS recorded as UTM coordinates, MGA94 zone 50</li> </ul> </li> <li>• <b>HOR 2023</b> DSO Grab Samples – Samples locations were located on high resolution imagery (2.5cm)</li> <li>• <b>HOR 2021/22</b> RC Drilling-Initial collar locations are determined by handheld Garmin GPS but will be surveyed using DGPS before resource estimates are undertaken. Holes subsequently located by high definition photography, with estimated accuracy +/- 1m. Gyroscopic down hole surveys completed on holes RC1164-1180</li> <li>• <b>HOR 2021</b> Auger drilling- Initial collar locations determined by handheld Garmin GPS but will be surveyed using DGPS before resource estimates are undertaken. 1985 RC Vat sampling programme- not known</li> <li>• RC and Auger sampling- Grid system coordinates are GDA94 MGA Zone 50.</li> <li>• RC and Auger sampling -Topographic control is available from known survey stations and Hyvista detailed aerial photography acquired in 2017. Topographic control is at the decimetre level on site. 1985 RC Vat sampling programme- not known</li> </ul> <p><b>Historic</b></p> <ul style="list-style-type: none"> <li>• The Mine surveyors used standard industry practices at the time to mark out and pick up collar coordinates in mine grid format. The mine grid coordinates have subsequently been transformed into MGA_GDA94 format. All available historic collar locations still visible at surface have recently been surveyed using RTK DGPS system by MHR Surveyors Pty Ltd.</li> <li>• Downhole surveys were taken from Eastman camera discs employed by the various drilling companies at that time. Several available historic collar locations still visible at surface have recently been surveyed down hole either by re-entering the drill hole with a drill rig then downhole surveying using single shot digital camera readings or by DHS (Aust) Pty Ltd using an Electronic Multishot tool with readings in and out of the hole every 5m. Stated accuracies are +/- 0.2° for dip and 0.3° for azimuth.</li> <li>• Barrack Mine Ltd created a NW mine grid orientated over the pit area with an east-west azimuth equivalent to 89°. The mine grid RL was offset from real RL by 62.2m. These coordinates have subsequently been transformed to MGA_GDA94 zone 50 using the historic grid transformation.</li> <li>• Rock chip and geochemical sample locations have been extracted from WAMEX reports or digitised from georeferenced plans.</li> </ul>

Criteria	JORC Code explanation	Commentary
<b>Data spacing and distribution</b>	<ul style="list-style-type: none"> <li>Data spacing for reporting of Exploration Results.</li> <li>Whether the data spacing and distribution is sufficient to establish the degree of geological and grade continuity appropriate for the Mineral Resource and Ore Reserve estimation procedure(s) and classifications applied.</li> <li>Whether sample compositing has been applied.</li> </ul>	<ul style="list-style-type: none"> <li><b>HOR 2025</b> RC Drilling Motters, holes typically drilled at right angle to apparent structures, holes 10-20 apart or as stated</li> <li><b>HOR 2021/22</b> RC Drilling-Sectional E-W drilling, typically 20m spacing, otherwise various. C20 stockpile drilling now 10m x 10m upon completion of 2022 infill lines</li> <li><b>HOR 2021</b> Auger drilling- auger drilling used approx. 20m spacing in a diamond pattern.</li> <li>RC and Auger sampling- drilling spacing and results employed in this program are considered sufficient to establish the degree of geological and grade continuity appropriate for the Mineral Resource and Ore Reserve estimation procedure(s) and classifications applied.</li> <li>No sample compositing has been applied.</li> </ul> <p><b>Historic</b></p> <ul style="list-style-type: none"> <li>The historical data spacing and distribution was not considered sufficient for the purpose of a modern resource estimation. Follow up drilling has been completed to infill obvious gaps in order to provide sufficient geological and grade continuity. When the drilling was complete, the mineralised domains display sufficient geological and grade continuity for the mineral resource procedures and classifications applied to support the definition of Measured Indicated and Inferred Mineral Resources under the 2012 JORC code.</li> </ul>
<b>Orientation of data in relation to geological structure</b>	<ul style="list-style-type: none"> <li>Whether the orientation of sampling achieves unbiased sampling of possible structures and the extent to which this is known, considering the deposit type.</li> <li>If the relationship between the drilling orientation and the orientation of key mineralised structures is considered to have introduced a sampling bias, this should be assessed and reported if material.</li> </ul>	<ul style="list-style-type: none"> <li><b>HOR 2025</b> RC Drilling Motters, no knowledge of sampling bias at this stage.</li> <li><b>HOR 2021/22</b> RC Drilling-Orientation of sampling has not necessarily achieved unbiased sampling of some structures, discussed in text.</li> <li><b>HOR 2021</b> Auger drilling-Drilling in this program is vertical and considered to represent an unbiased section of the material being sampled.</li> <li>RC and Auger sampling- No knowledge of sampling bias</li> </ul> <p><b>Historic</b></p> <ul style="list-style-type: none"> <li>The majority of drilling was orientated mine grid east which is slightly oblique to the mineralised trends but intersection angles are closer to perpendicular in most cases.</li> <li>A consistent sampling bias is not considered to be an issue for the purpose of this resource estimation. Diamond drilling confirmed that drilling orientation did not introduce any bias regarding the orientation of key mineralised structures.</li> </ul>
<b>Sample security</b>	<ul style="list-style-type: none"> <li>The measures taken to ensure sample security.</li> </ul>	<ul style="list-style-type: none"> <li><b>HOR 2025 RC Drilling</b> Motters, samples were collected in the field by Company geologists, bagged and stored at a secure location before collection by Company personnel, before delivery directly to Nagrom in Kelmscott, receipted by the laboratory upon arrival.</li> <li><b>2021/22</b> RC and Auger sampling-Prior to submission all samples were stored on-site under supervision of the Company personnel. Samples are transported to Perth by Horseshoe Metals personnel and then onto the assay laboratory.</li> </ul> <p><b>Historic</b></p> <ul style="list-style-type: none"> <li>All drill samples were assayed onsite at the Horseshoe Gold Mine Pty Ltd laboratory or at Laboratories in Perth or Meekatharra</li> </ul>
<b>Audits or reviews</b>	<ul style="list-style-type: none"> <li>The results of any audits or reviews of sampling techniques and data.</li> </ul>	<ul style="list-style-type: none"> <li><b>HOR 2025</b> RC Drilling Motters, no audits or reviews have been completed at this stage.</li> <li><b>2021/22</b> RC and Auger sampling-No audits or reviews have been performed to date.</li> </ul> <p><b>Historic</b></p> <ul style="list-style-type: none"> <li>Sampling techniques are consistent with industry standards. Consistency of data was validated by CSA Global Pty Ltd while loading into the database (Depth from &lt; Depth to; interval is within hole depth, check for overlapping samples or intervals, etc.). Any data which fails the database constraints and cannot be loaded is returned to Horseshoe Metals for validation and correction. Global consistency was also checked later on by plotting sections using the database and reconciling assays.</li> </ul>

## Section 2 Reporting of Exploration Results

Criteria	JORC Code explanation	Commentary
<b>Mineral tenement and</b>	<ul style="list-style-type: none"> <li>Type, reference name/number, location and ownership including agreements or material issues</li> </ul>	<ul style="list-style-type: none"> <li>The Horseshoe Lights Project comprises one Mining Lease M52/743, ten Exploration Licence E52/3759, E52/3906, E52/3908, E52/3909, E52/3939, E52/4229, E52/4230, E52/4372, E52/4440 and E52/4456. Current registered holder of the tenements are Murchison Copper</li> </ul>

Criteria	JORC Code explanation	Commentary
<b>land tenure status</b>	<p>with third parties such as joint ventures, partnerships, overriding royalties, native title interests, historical sites, wilderness or national park and environmental settings.</p> <ul style="list-style-type: none"> <li>The security of the tenure held at the time of reporting along with any known impediments to obtaining a licence to operate in the area.</li> </ul>	<p>Mines Pty Ltd (MCM) a wholly owned subsidiary of Horseshoe Metals Limited, and Horseshoe Metals Limited</p> <ul style="list-style-type: none"> <li>The Kumarina project consists of two tenements, M52/27; and a mine lease application, M52/1078. MCM has 100% interest in the tenements.</li> <li>Unrelated party Horseshoe Gold Mine Pty Ltd (a subsidiary of Granges Resources Limited) retains a 3% net smelter return royalty in respect to all production derived from M52/743</li> <li>Tenements are in good standing and the Company is unaware of any additional impediment to it obtaining a licence to operate in the area.</li> </ul>
<b>Exploration done by other parties</b>	<ul style="list-style-type: none"> <li>Acknowledgment and appraisal of exploration by other parties.</li> </ul>	<ul style="list-style-type: none"> <li>The Horseshoe Lights deposit surface gossan was discovered in 1946 and worked at a prospect level until 1949. Open pit and underground workings were operated by Asarco from 1949 to 1954. Asarco explored the deposit by sampling surface trenches, drilling one surface diamond drill hole, underground drilling and cross-cutting underground on two levels.</li> <li>In 1964, Electrolytic Zinc Company conducted widespread exploration including eight diamond drill holes in a search for copper. During 1969 and 1970 Planet Metals Ltd drilled seven holes. In the period 1975 to 1977, Amax Corporation and its partner Samantha Mines investigated the Horseshoe Lights area for base metals. This investigation included drilling a further three diamond drill holes including one beneath the southern end of the main ore zone. Placer Austex Pty Ltd and Homestake Mining Company Ltd also investigated the property.</li> <li>Previous exploration activities during the main phase of open pit mining were completed by Horseshoe Gold Mine Pty Ltd which was a wholly owned subsidiary of Barrack Mines Ltd between 1983-89. Barrack Mines Ltd drilled 43 diamond holes for 15,353m, 638 Reverse Circulation holes for 55,343m. The area was subsequently mined as a copper mine by Sabminco until 1992/3, when production ceased. The Project was re-established by current owners Horseshoe Metals in 2010 after a long period of inactivity.</li> </ul>
<b>Geology</b>	<ul style="list-style-type: none"> <li>Deposit type, geological setting and style of mineralisation.</li> </ul>	<ul style="list-style-type: none"> <li>VMS mineralisation at Horseshoe Lights occurs in the core of a NNW trending and SE plunging anticline. The mineralised envelope of the deposit itself is also SW dipping and plunging to the SSE, and was likely folded. It sits within altered basalt and mafic volcanoclastic units along the contact with overlying felsic volcanic schist. The VMS mineralisation in the mine area is constrained by the tightly folded and sheared stratigraphy, and appears to be affected by offsets along N-S and NE trending brittle faults.</li> </ul>
<b>Drill hole Information</b>	<ul style="list-style-type: none"> <li>A summary of all information material to the understanding of the exploration results including a tabulation of the following information for all Material drill holes:</li> <li>If the exclusion of this information is justified on the basis that the information is not Material and this exclusion does not detract from the understanding of the report, the Competent Person should clearly explain why this is the case.</li> </ul>	<ul style="list-style-type: none"> <li>Refer to the body of text of this report and relevant Tables for information material to the understanding of the exploration results.</li> <li>No exclusions of information have occurred.</li> </ul>
<b>Data aggregation methods</b>	<ul style="list-style-type: none"> <li>In reporting Exploration Results, weighting averaging techniques, maximum and/or minimum grade truncations (e.g. cutting of high grades) and cut-off grades are usually Material and should be stated.</li> <li>Where aggregate intercepts incorporate short lengths of high-grade results and longer lengths of low grade results, the procedure used for such aggregation should be stated and some typical</li> </ul>	<ul style="list-style-type: none"> <li>HOR 2025 RC Drilling, Motters - no high-grade cutting, copper results reported above 0.3% Cu, reported composite have been calculated using a 0.3% cu lower cut and allowing for 4m of internal dilution</li> <li>HOR 2021/22 RC Drilling- no high-grade cutting, copper results reported above 0.3% Cu C20 stockpile reported above 0.3% Cu, 0.3 g/t Au. Stockpile drilling reported above 0.2% Cu, 0.2 g/t Au</li> <li>HOR 2021 Auger drilling- Only 1m split samples are reported and simply length weighted and averaged over the length of the hole above the vat liner; no top cut, no minimum interval, no internal dilution considered. Results are gold only unless stated</li> <li>HOR 2021/22 RC Drilling - significant copper and gold intersects reported</li> <li>HOR 2021 Auger drilling, gold assay only</li> </ul>

Criteria	JORC Code explanation	Commentary
	<p>examples of such aggregations should be shown in detail.</p> <ul style="list-style-type: none"> <li>The assumptions used for any reporting of metal equivalent values should be clearly stated.</li> </ul>	
<b>Relationship between mineralisation widths and intercept lengths</b>	<ul style="list-style-type: none"> <li>These relationships are particularly important in the reporting of Exploration Results. If the geometry of the mineralisation with respect to the drill hole angle is known, its nature should be reported.</li> <li>If it is not known and only the down hole lengths are reported, there should be a clear statement to this effect (e.g. 'down hole length, true width not known').</li> </ul>	<ul style="list-style-type: none"> <li>HOR 2025 RC Drilling, Motters - mineralisation dips around 80° to the west, west dipping holes were designed based on waste dump interference. Designed at -55 to best define edges and bottom of mineralisation.</li> <li>HOR 2021/22 RC Drilling- mineralisation dips around 70° to the west, east dipping holes intersect approximately perpendicular to mineralisation, vertical and west dipping holes are non-perpendicular to mineralisation</li> <li>HOR 2021 Auger drilling All intercept widths reported are downhole lengths, and equivalent to true widths for remnant vat stockpiles.</li> <li>HOR 2021/22 RC Drilling- typically reported as down hole length, true width not known, C20 stockpile drilling considered true width</li> <li>HOR 2021 Auger drilling- downhole lengths considered true widths</li> </ul>
<b>Diagrams</b>	<ul style="list-style-type: none"> <li>Appropriate maps and sections (with scales) and tabulations of intercepts should be included for any significant discovery being reported These should include, but not be limited to a plan view of drill hole collar locations and appropriate sectional views.</li> </ul>	<ul style="list-style-type: none"> <li>See plans and sections</li> </ul>
<b>Balanced reporting</b>	<ul style="list-style-type: none"> <li>Where comprehensive reporting of all Exploration Results is not practicable, representative reporting of both low and high grades and/or widths should be practiced to avoid misleading reporting of Exploration Results.</li> </ul>	<ul style="list-style-type: none"> <li>Reported results considered representative, no isolation of high-grade results.</li> </ul>
<b>Other substantive exploration data</b>	<ul style="list-style-type: none"> <li>Other exploration data, if meaningful and material, should be reported including (but not limited to): geological observations; geophysical survey results; geochemical survey results; bulk samples – size and method of treatment; metallurgical test results; bulk density, groundwater, geotechnical and rock characteristics; potential deleterious or contaminating substances.</li> </ul>	<ul style="list-style-type: none"> <li>RC Drilling-Various, substantially covered by 2013 CSA report Horseshoe Lights Project In-situ Mineral Resources</li> <li>Auger drilling -1985 Vat Sampling programme detail taken from in-house memo "Horseshoe Lights Vat Sampling Programme March 1985", authored by Rosalind Wright, checked and verified by V.J. Novak, M.Sc.</li> </ul>
<b>Further work</b>	<ul style="list-style-type: none"> <li>The nature and scale of planned further work (e.g. tests for lateral extensions or depth extensions or large-scale step-out drilling).</li> <li>Diagrams clearly highlighting the areas of possible extensions, including the main geological interpretations and future drilling areas, provided this information is not commercially sensitive.</li> </ul>	<ul style="list-style-type: none"> <li>Planned activities discussed in text.</li> <li>Refer to diagrams in body of text.</li> </ul>