

28 April 2026

Ravenswood Project: Broad, shallow gold intersections near 2.5Moz Mount Leyshon gold mine.

HIGHLIGHTS

- Broad, shallow gold intersections extend previously drilled mineralised zones and support the potential for a large, bulk-tonnage operation at Ravenswood's Seventy Mile Mount prospect, north Queensland.
 - Significant new drill intersections include:
 - **BSMDD006: 84.5m @ 0.247 g/t Au from 25m**
 - **BSMDD006: 15.4m @ 0.83 g/t Au from 207.6m** incl 3.5m @ 3.347 g/t Au from 219.5m
 - **BSMDD007: 56m @ 0.456 g/t Au from 31m**
 - Prospect located within the highly endowed Mount Leyshon Corridor, a 17Moz gold province¹ hosting the historic Mount Leyshon gold mine which produced 2.5Moz of gold and 2.3Moz of silver from 1987 to 2022².
 - Field programs have identified multiple high-priority targets with high-grade gold rock chip and stream sediment results and visible gold recognised - strong potential for discovery growth.
 - Follow-up drilling planned to expand mineralised zones and advance toward resource definition.
 - Dittmer underground exploration drive advancing and Torpy's drilling scheduled for May.
-

Ballymore Resources (ASX:BMR) has strengthened the potential for a large, shallow, bulk-tonnage gold operation at its Seventy Mile Mount target, along strike from the historic Mount Leyshon gold mine, at its Ravenswood Project near Charters Towers.

Ballymore Managing Director, Mr David A-Izzeddin, said:

“Encouraging drilling and field work results continue to demonstrate the significant growth potential of the Seventy Mile Mount breccia system, with broad zones of shallow gold mineralisation now confirmed across multiple drill holes. Importantly, the prospect lies within the same highly endowed structural corridor that hosts the Mount Leyshon gold mine.”

In parallel, field programs across the broader Pinnacles area have identified several new targets, including the Think Big prospect where visible gold has been identified in stream sediments. These emerging targets provide multiple opportunities to expand the mineralised footprint through further exploration. Further drilling is planned to test extensions to the breccia system and to advance these targets toward resource definition.”

¹ Ballymore Prospectus released on 1 September 2021

² Refer Leyshon Resources ASX Release dated 14 April 2014 *Mt Leyshon Strategic Review*
<https://announcements.asx.com.au/asxpdf/20140414/pdf/42nzfkhng05stk.pdf>

Seventy Mile Mount drilling results

Seventy Mile Mount forms part of the Ravenswood Project located approximately 20km south of Charters Towers and 7km east-northeast of the historic Mount Leyshon Gold Mine.

The latest drilling program was designed to test the continuity of gold mineralisation within the Seventy Mile Mount breccia system and has delivered broad, shallow intersections that significantly strengthen confidence in the geological model.

The prospect occurs within the highly prospective Mount Leyshon Corridor, which hosts several significant breccia-hosted gold systems. Seventy Mile Mount comprises a hydrothermal breccia pipe forming a prominent conical hill approximately 300m in diameter, exhibiting similarities to other mineralised breccia pipes within the district, including Mount Leyshon and Mount Wright.

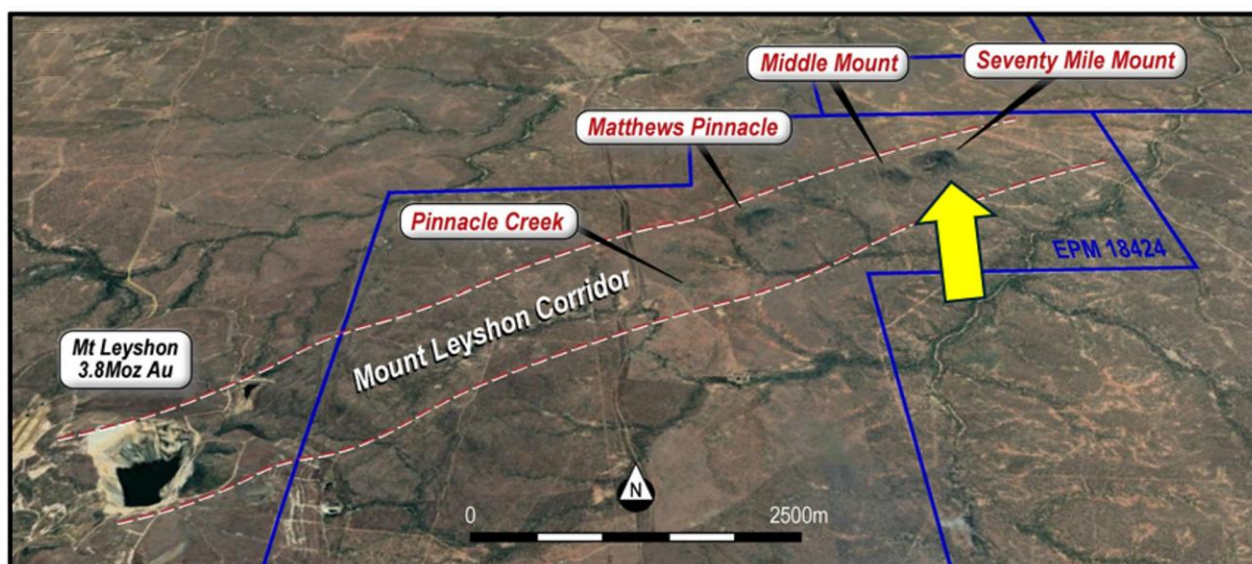


Figure 1 – Airphoto showing the Mount Leyshon mine and the Seventy Mile Mount breccia pipe, sitting within the Mount Leyshon Corridor.

Recent drilling was undertaken to follow up elevated gold intersections reported from previous programs. Two diamond drill holes (BSMDD006 and BSMDD007) were completed for a total of 858.2m. Both holes intersected altered breccia units with associated sulphide mineralisation, followed by broad zones of crackle breccia with intermittent veining.

Key drilling highlights

- **BSMDD006: 84.5m @ 0.247 g/t Au** from 25m
- **BSMDD006: 15.4m @ 0.83 g/t Au** from 207.6m including
 - 3.5m @ 3.347 g/t Au from 219.5m
- **BSMDD007: 56m @ 0.456 g/t Au** from 31m

These results extend previously reported mineralised zones and demonstrate continuity within the breccia system.

Table 1 - Summary of significant drill results for BSMDD006 & 007

Cut-Off (Au g/t)	Hole	From	To	Interval (m)	Au (g/t)
0.1	BSMDD006	25	110	84.5	0.247
1.0	Including	38	38	0.9	1.322
1.0	Including	68	69	1	2.573
1.0	Including	75	76	1	1.742
1.0	Including	107	110	2.7	3.573
0.1	BSMDD006	208	223	15.4	0.830
0.5	Including	220	223	3.5	3.347
1.0	Including	220	221	1.5	7.144
1.0	BSMDD006	248	249	1	1.189
0.1	BSMDD006	281	284	2.9	1.377
1.0	Including	282	283	1	3.481
0.1	BSMDD006	328	330	2	2.054
1.0	Including	329	330	1	3.840
0.1	BSMDD007	19	22	3	0.983
1.0	Including	20	21	1.1	2.189
0.1	BSMDD007	31	87	56	0.456
1.0	Including	48	49	1	7.478
0.5	Including	84	87	3	3.859
1.0	Including	85	87	2	5.426
1	BSMDD007	147	148	1	1.017
1	BSMDD007	180	182	2	2.509
0.1	BSMDD007	251.4	255	3.6	0.504
1	Including	253.85	255	1.15	1.325
0.1	BSMDD007	288	294	6	0.759
0.5	Including	291	294	3	1.430
1	Including	293	294	1	2.858
0.1	BSMDD007	325	327	2	0.564

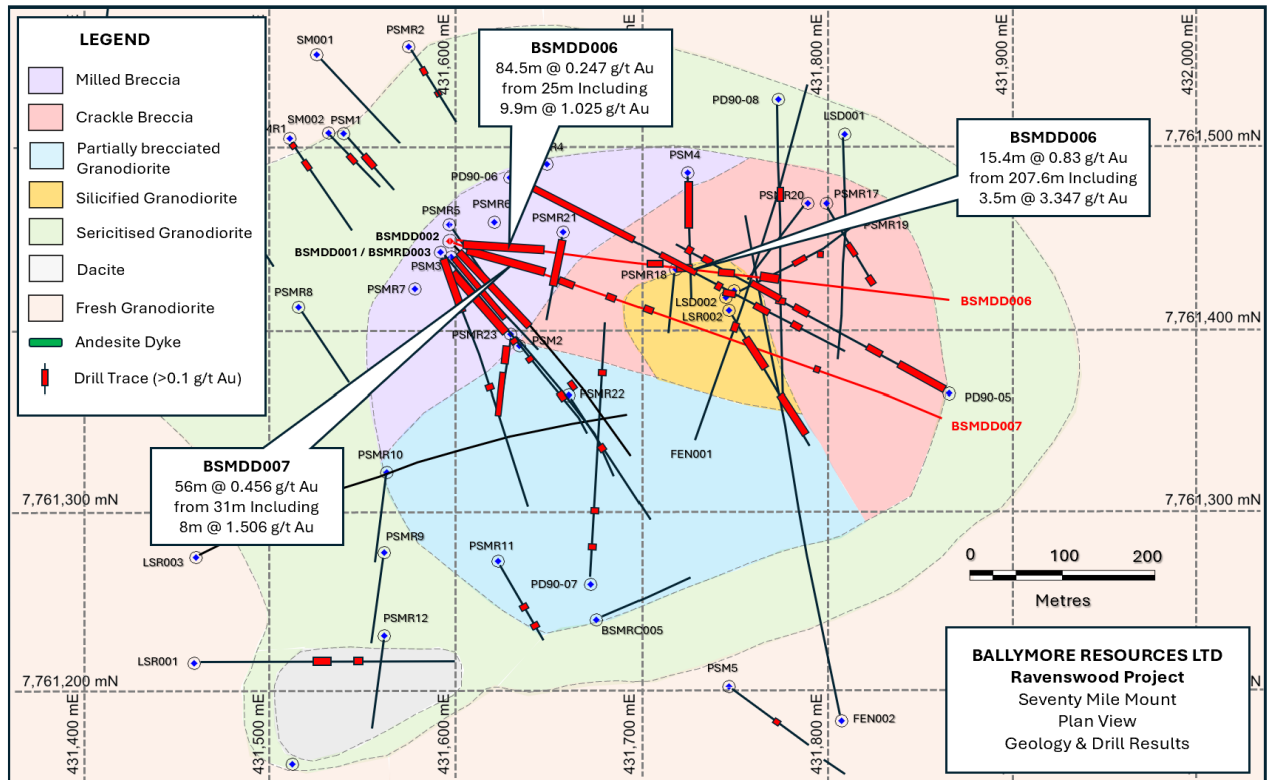


Figure 2 – Seventy Mile Mount’s broad shallow gold intersections and expanding breccia footprint.

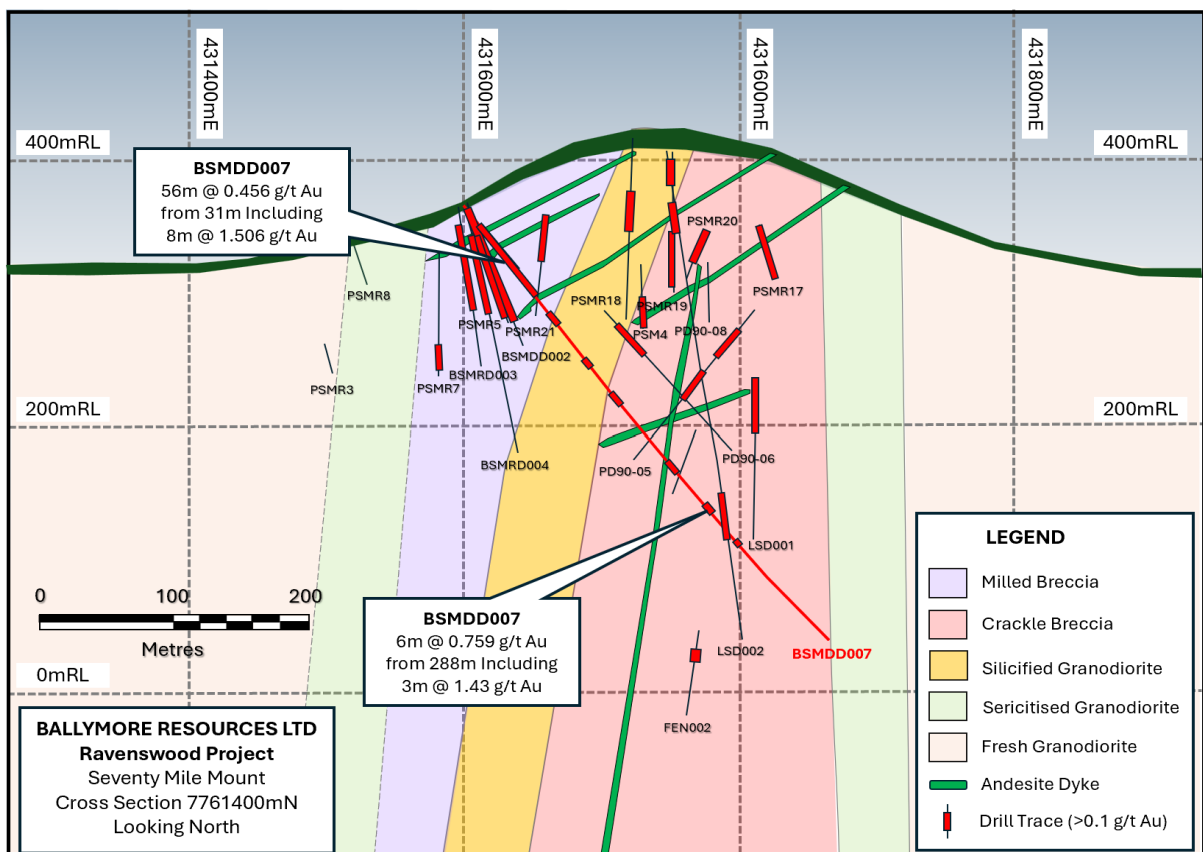


Figure 3 – Cross Section 7761400mN looking North at the Seventy Mile Mount breccia pipe, presenting geology and gold drilling highlights.

A large, shallow mineralised breccia system

Mineralisation at Seventy Mile Mount is associated with a mapped polymictic milled breccia unit currently interpreted to extend over approximately 260m × 80m, with potential to expand both at depth and along strike (Figure 4 – purple unit).

The broad widths and shallow depth of mineralisation encountered to date are consistent with features observed in other bulk-tonnage breccia-hosted gold systems within the Mount Leyshon Corridor.

Historic drilling in the area has also reported significant intersections, including:

- **BSMDD001: 40m @ 1.06 g/t Au from 47m**
- **PD90-06: 100m @ 0.68 g/t Au, including**
 - **47m @ 1.95 g/t Au, including**
 - **4m @ 12.4 g/t Au**

These results collectively highlight the potential for the breccia unit to host a significant gold system. Further drilling is planned to test extensions to the mineralised breccia and assess its resource potential.

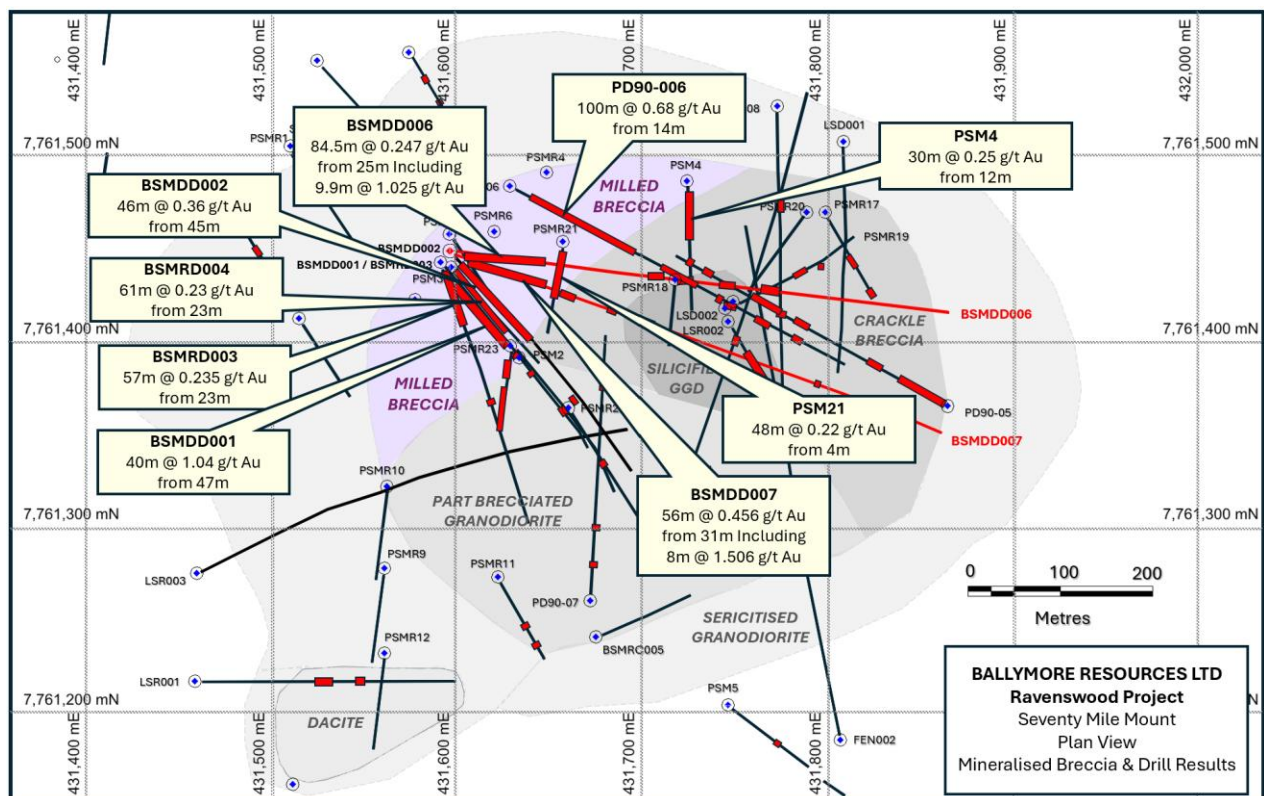


Figure 4 – Plan view of the Seventy Mile Mount breccia pipe, presenting the strongly mineralised milled breccia (purple) and gold drilling highlights targeting the breccia.

Table 2 - Significant previous Seventy Mile Mount drill results targeting milled breccia

Cut-Off (Au g/t)	Hole	From	To	Interval (m)	Au (g/t)
0.1	LSD001	184	218	34	1.800
0.5	Including	186	200	14	3.710
0.1	LSD002	42	76	34	0.662
0.1	LSD002	208	216	8	6.020
1.0	Including	208	212	4	11.940
0.1	LSD002	260	288	28	2.890
0.5	Including	260	268	8	9.210
0.1	LSR002	34	76	42	0.430
0.1	LSR002	110	160	50	0.520
0.1	PD90-05	160	183	23	0.930
0.5	Including	161	164	3	5.760
0.1	PD90-06	14	114	100	0.680
0.2	Including	14	61	47	1.953
0.5	Including	57	61	4	12.403
0.1	PD90-06	128	158	30	1.170
1.0	Including	139	140	1	20.600
0.1	PSM1	32	44	12	1.278
0.1	PSM3	10	66	56	0.421
1.0	Including	32	34	2	5.000
0.1	PSM3	72	120	48	0.350
0.1	PSMR3	59	72	13	1.245
0.1	PSMR17	12	80	68	0.345
0.5	Including	55	60	5	2.060
0.1	PSMR19	40	100	60	0.245
0.1	PSMR20	20	76	56	0.219
0.1	PSMR21	4	52	48	0.216
0.1	BSMDD001	15	36	21	0.346
0.1	BSMDD001	47	87	40	1.062
1.0	Including	49	52	3	9.380
0.1	BSMDD002	20	38	18	0.165
0.1	BSMDD002	45	70	25	0.322
0.5	Including	51	56	5	1.130
0.1	BSMDD002	76	91	15	0.549
0.5	Including	76	81	5	1.440
0.1	BSMRD003	23	80	57	0.235
1.0	Including	62	64	2	1.663
0.1	BSMRD004	23	84	61	0.226

Pinnacles field work highlights multiple new gold targets

Seventy Mile Mount forms part of the broader Pinnacles area, which hosts multiple hydrothermal breccia and vein systems.

Recent field programs have identified widespread gold mineralisation across several prospects. A total of 33 stream sediment samples (-80#), 33 stream sediment samples (-2mm) and 88 rock chip samples have been collected across the area. Results from the -80# stream sediment and rock chip samples have been received and highlight several priority targets.

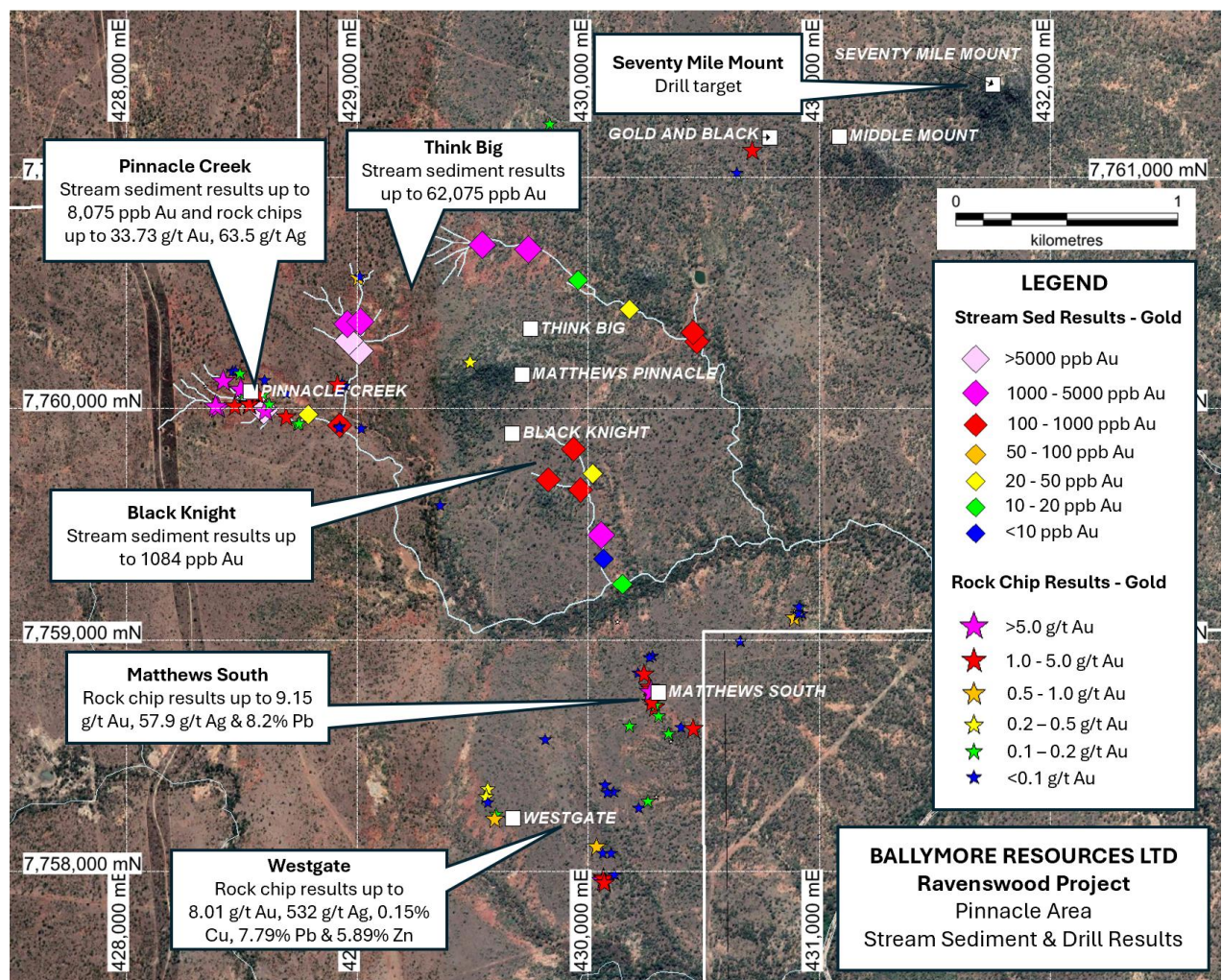


Figure 5 – Plan view of the Pinnacle area, presenting stream sediment and rock chip results and priority targets.

Think Big prospect – underexplored target with visible gold

The Think Big prospect represents a compelling new gold target within the Pinnacles area, north of Matthews Pinnacle, where visible gold and exceptionally high gold-in-sediment results have been identified. Importantly, the prospect has only received limited shallow drill testing, presenting a clear opportunity for discovery through near-term exploration.

Key results include:

- Stream sediment samples up to 62,075 ppb Au
- Visible gold observed in multiple sediment samples
- Gold nuggets up to 2mm in size recorded

Bulk cyanide leach (BCL) analyses of -2mm samples are pending and are expected to provide further insight into coarse gold distribution, given that many of the nuggets observed were likely sieved out in the -80# samples, which only collected material finer than 0.177mm.

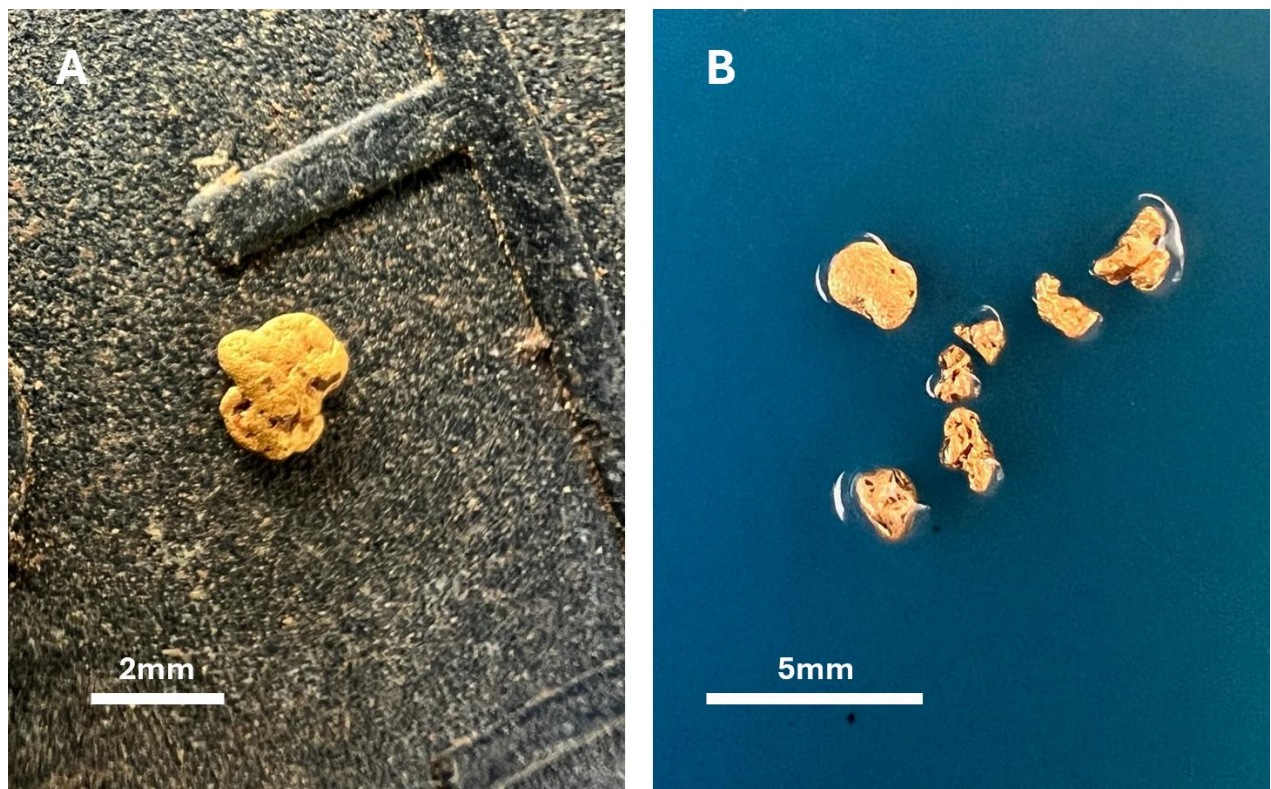


Figure 6 – Examples of visible gold observed in the Think Big – Pinnacle Creek area. (A) 2mm gold nugget located in a fracture in the granodiorite at the site of stream sediment sample PCSS011; (B) Angular gold nuggets up to 2mm found in one pan from the site of stream sediment sample PCSS011.

Pinnacle Creek prospect – high-grade vein system

The Pinnacle Creek area hosts a series of quartz veins west of the Matthews Pinnacle breccia system.

Key results include:

- Rock chip samples up to 33.7 g/t Au
 - Eleven samples exceeding 1.0 g/t Au
 - Three samples exceeding 10 g/t Au
- Stream sediment results up to 8,075 ppb Au

Matthews South and Westgate Prospects

Both Matthews South and Westgate host quartz vein systems associated with silver-lead mineralisation.

Key results include:

Matthews South:

- Rock chip samples up to 9.16 g/t Au
- Silver values up to 334.6 g/t Ag
- Lead up to 8.55% Pb

Westgate:

- Rock chip samples up to 8.02 g/t Au
- Silver up to 532 g/t Ag
- Lead up to 7.79% Pb

These areas remain poorly tested by drilling.

Black Knight Prospect

The Black Knight prospect forms part of the Matthews Pinnacle breccia system.

Key results include stream sediment values up to 1,084 ppb Au.

Limited field work has been completed to date.

Upcoming work program

Following these encouraging results, the Company is planning further work to advance the Seventy Mile Mount and Pinnacles targets.

Planned activities include:

- Additional drilling to expand mineralised zones at Seventy Mile Mount
- Resource assessment studies of the breccia system
- Initial drill testing of high-priority Pinnacles targets, including Think Big
- Ongoing field mapping and sampling programs
- Restart of drilling at the Torpy's target in May 2026
- Continued underground exploration development at Dittmer

About Ravenswood Project

The Ravenswood Project is situated in the Charters Towers Province in northeast Queensland, approximately 20 - 60km south of Charters Towers. It covers a large landholding within a proven gold district and contains multiple underexplored breccia and vein systems. Recent drilling and field results continue to demonstrate the potential for the discovery of additional gold systems within the Mount Leyshon Corridor.

The Project consists of EPM's 18424, 18426, 18637, 25466, 25467 and 28565, which comprise a total of 115 sub-blocks and encompass an area of 370km².

Planned Activities

The Company has substantial work programs planned for 2026. Planned works include the following:

- May 2026 Resume drilling at Torpy's, Maniopota & Ruddygore (Ruddygore Project)
- Q2 2026: Complete development of the upgraded 4 level access at Dittmer.
- Q2 2026 Commence Stage 6 drill program from newly developed southern exploration drive
- Q2 2026 Dittmer bulk sample recovery
- Q3 2026 Maiden MRE for Dittmer, pending completion of Stage 6 drill program

Approved by the Board of Ballymore Resources Limited.

For further information:

David A-Izzeddin

Managing Director

daizzeddin@ballymoreres.com

Gareth Quinn

Media and Investor Relations

gareth@republicir.com.au

0417 711 108

Competent Persons Statement

The information in this announcement that relates to Exploration Results is based on, and fairly represents, information compiled or reviewed by Mr David A-Izzeddin. Mr A-Izzeddin is a Member of The Australasian Institute of Geoscientists and is a Director and an employee of the Company. Mr A-Izzeddin has sufficient experience which is relevant to the style of mineralisation and type of deposit under consideration and to the activity which he is undertaking to qualify as a Competent Person as defined in the 2012 Edition of the 'Australasian Code for Reporting of Exploration Results, Mineral Resources and Ore Reserves'. Mr A-Izzeddin consents to the inclusion in the announcement of the matters based on his information in the form and context in which it applies. The Exploration Targets described in this announcement are conceptual in nature and there is insufficient information to establish whether further exploration will result in the determination of Mineral Resources.

Forward-Looking Statements

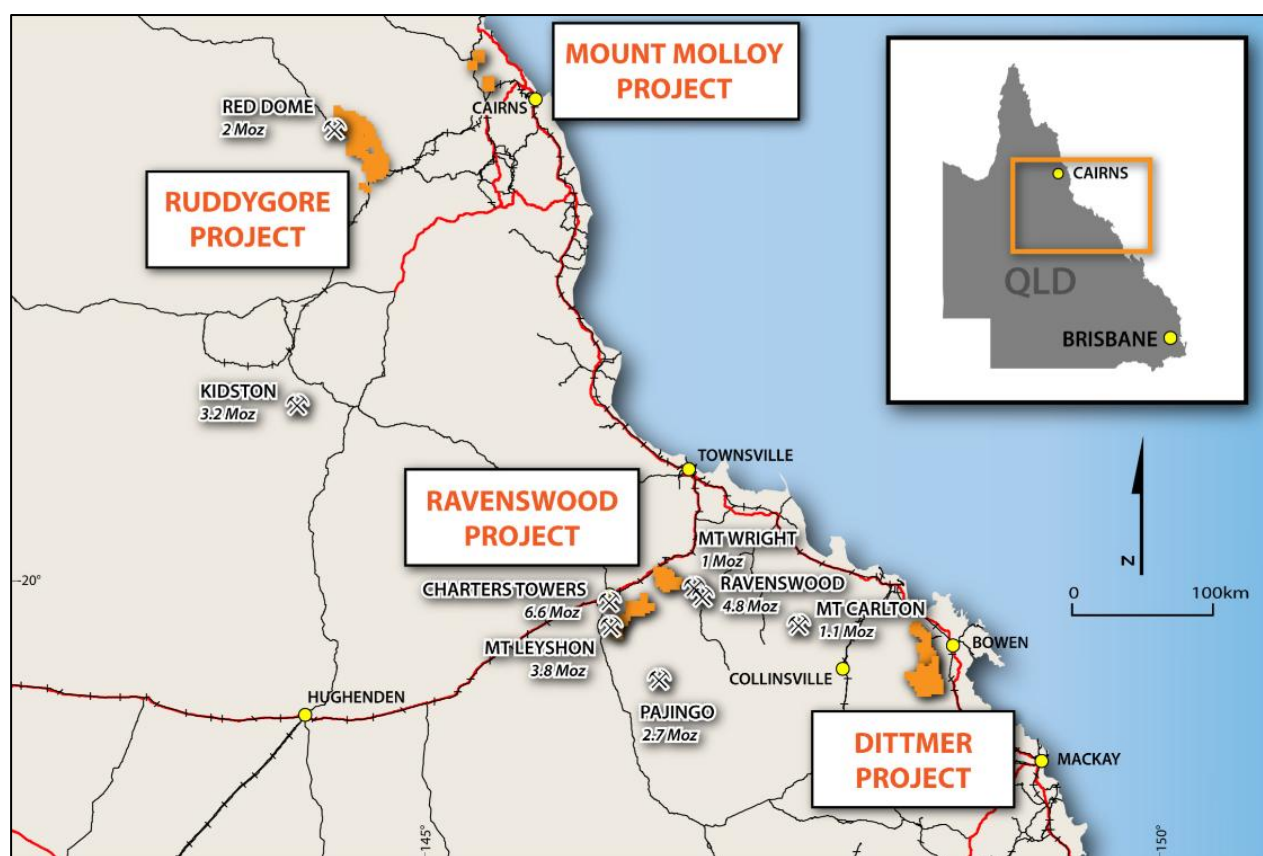
Certain statements made during or in connection with this statement contain or comprise certain forward-looking statements regarding the Company's Mineral Resources, exploration operations and other economic performance and financial conditions as well as general market outlook. Although the Company believes that the expectations reflected in such forward-looking statements are reasonable, such expectations are only predictions and are subject to inherent risks and uncertainties which could cause actual values, results, performance or achievements to differ materially from those expressed, implied or projected in any forward-looking statements and no assurance can be given that such expectations will prove to have been correct.

Accordingly, results could differ materially from those set out in the forward-looking statements as a result of, among other factors, changes in economic and market conditions, delays or changes in project development, success of business and operating initiatives, changes in the regulatory environment and other government actions, fluctuations in commodity prices and exchange rates and business and operational risk management. Except for statutory liability which cannot be excluded, each of the Company, its officers, employees and advisors expressly disclaim any responsibility for the accuracy or completeness of the material contained in this statement and excludes all liability whatsoever (including in negligence) for any loss or damage which may be suffered by any person as a consequence of any information in this statement or any error or omission. The Company undertakes no obligation to update publicly or release any revisions to these forward-looking statements to reflect events or circumstances after today's date or to reflect the occurrence of unanticipated events other than required by the Corporations Act and ASX Listing Rules. Accordingly, you should not place undue reliance on any forward-looking statement.

About Ballymore Resources (ASX:BMR)

Ballymore holds a portfolio of exploration and development projects in prolific Queensland mineral belts that are highly prospective for gold and base metals. These consist of two granted Mining Leases (MLs) and fourteen Exploration Permits over four project areas at Dittmer, Ruddygore, Ravenswood, Mount Molloy. The total area covered by the tenements is 1,746 km².

Known deposits in north-east Queensland include Kidston (5 Moz Au), Ravenswood/Mount Wright (5.8 Moz Au), Mount Leyshon (3.8 Moz Au), Red Dome/Mungana (3.2 Moz Au) and Mt Morgan (17 Moz Au and 239 Kt Cu). The deposits occur in a wide range of geological settings including porphyries, breccias, skarns and veins.



Board

Andrew Greville, Chairman
 David A-Izzeddin, Managing Director
 Andrew Gilbert, Director – Operations
 Nick Jorss, Non-Executive Director

Head Office

Suite 606, Level 6
 10 Market St Brisbane QLD 4000
 Phone +617 3212 6299
ballymoreresources.com

APPENDIX 1. RAVENSWOOD – JORC CODE TABLE 1 CHECKLIST OF ASSESSMENT AND REPORTING CRITERIA

Section 1: Sampling Techniques and Data

CRITERIA	JORC Code Explanation	Commentary
<p>SAMPLING TECHNIQUES</p>	<ul style="list-style-type: none"> Nature and quality of sampling (e.g., cut channels, random chips, or specific specialised industry standard measurement tools appropriate to the minerals under investigation, such as down hole gamma sondes, or handheld XRF instruments, etc). These examples should not be taken as limiting the broad meaning of sampling. Include reference to measures taken to ensure sample representivity and the appropriate calibration of any measurement tools or systems used. 	<ul style="list-style-type: none"> Exploration has been undertaken at the Project since the early 1950s. Sampling methods have included surface rock chip and trenching, soil, and stream sediment samples, together with drillhole samples comprising open hole percussion, RC percussion, and diamond core samples. Geochemistry from soil and stream sediment samples is used semi-quantitatively to guide further exploration and is not used for Mineral Resource estimation. The accuracy of rock chip geochemistry is generally high but these samples are spot samples and generally not used in Mineral Resource estimation. The accuracy of trench and channel geochemistry is generally high. These samples are regularly used in Mineral Resource estimation. The quality of open hole percussion drilling is generally low because there is a likelihood of contamination of samples. Consequently, these samples are generally used to guide further exploration and are not used for Mineral Resource estimation. The quality of RC percussion drilling is generally medium – high because the method significantly reduces the potential of contamination, unless there is a lot of groundwater or badly broken ground. Consequently, these samples can be representative of the interval drilled and can be used for Mineral Resource estimation. The quality of diamond coring is generally medium – high because the method is designed to sample the rock mass effectively in most conditions. Consequently, these samples can be representative of the interval drilled and can be used for Mineral Resource estimation. Ballymore rock chip samples were collected from outcrop, subcrop, float material, as well as mullock samples. No information is available documenting measures to ensure sample representivity for surface sampling methods. These methods are not used for Mineral Resource estimation. Trench and channel sampling is an established method designed to deliver a representative sample of the interval being sampled. RC drilling is an established method designed to minimise drilling-induced contamination of samples, aimed to deliver a representative sample of the interval being drilled. Diamond drilling is also an established method aimed at collecting representative samples of the interval being drilled. Diamond drilling is also an established method aimed at collecting representative samples of the interval being drilled.

CRITERIA	JORC Code Explanation	Commentary
	<ul style="list-style-type: none"> Aspects of the determination of mineralisation that are Material to the Public Report. In cases where 'industry standard' work has been done this would be relatively simple (e.g., 'reverse circulation drilling was used to obtain 1 m samples from which 3 kg was pulverised to produce a 30 g charge for fire assay'). In other cases, more explanation may be required, such as where there is coarse gold that has inherent sampling problems. Unusual commodities or mineralisation types (e.g., submarine nodules) may warrant disclosure of detailed information. 	<ul style="list-style-type: none"> Economic gold mineralisation is measured in terms of parts per million and therefore rigorous sampling techniques must be adopted to ensure quantitative, precise measurements of gold concentration. If gold is present as medium – coarse grains, the entire sampling, sub-sampling, and analytical process must be more stringent. Where the main mineralisation is copper, this is measured as a percentage and therefore sampling techniques can be somewhat less rigorous than for gold. At Ravenswood, gold can be visible and therefore there are inherent sampling problems. Procedures used to manage this problem are documented elsewhere in relevant sub-sections of this table. RC drill holes were sampled as individual, 1 m length samples from the rig splitter. Individual metre samples were collected as a 12.5% split collected from the drill rig. Individual RC samples were collected in calico sample bags and grouped into polyweave bags for dispatch (approximately five per bag). Diamond drill holes were sampled as half core, with sample intervals selected by the BMR Geologist. The samples were sawn longitudinally in half using the onsite core saw
<p>DRILLING TECHNIQUES</p>	<ul style="list-style-type: none"> Drill type (e.g., core, reverse circulation, open-hole hammer, rotary air blast, auger, Bangka, sonic, etc) and details (e.g., core diameter, triple or standard tube, depth of diamond tails, face-sampling bit, or other type, whether core is oriented and if so, by what method, etc). 	<ul style="list-style-type: none"> Numerous drilling programs have been recorded across the Project area since the 1980s comprising mostly RC and diamond drilling. Most drilling is inconsistently documented and therefore details on hole sizes, bit types and other drilling parameters are sparse. Ballymore completed 3 diamond drillholes at Seventy Mile Mount – Matthews Pinnacle in HQ triple tube size (1,145.81m) in 2021. All holes were oriented using an Ace instrument. Ballymore completed 3 diamond drillholes at Seventy Mile Mount in HQ triple tube size (1,048.8m) in 2022. All holes were oriented using an Ace instrument. Ballymore completed 4 RC drill holes at King Solomon (550m) in 2022. All holes were oriented using an Ace instrument. Ballymore completed 11 RC drill holes at Day Dawn (1,360m) in 2024. All holes were oriented using an Ace instrument. Ballymore completed 2 diamond drillholes at Seventy Mile Mount in HQ triple tube size (858.2m) in 2025-26. Both holes were oriented using an Ace instrument.
<p>DRILL SAMPLE RECOVERY</p>	<ul style="list-style-type: none"> Method of recording and assessing core and chip sample recoveries and results assessed. 	<ul style="list-style-type: none"> For most historic programs, no information is available documenting if sample recovery was routinely recorded. Aberfoyle (1980s) reported sample recoveries of typically >85% in percussion drillholes. No assessment of historic sample recovery has been made. Ballymore Diamond drilling: Sample recovery for Ballymore drilling in 2021, 2022 and 2025-26 was measured on a per-run basis and generally reported to be greater than 99% Ballymore RC drilling: Bulk sample bags are weighed to monitor recoveries and RC sample recoveries of less than approximately 80% are noted in the geological/sampling log with a

CRITERIA	JORC Code Explanation	Commentary
	<ul style="list-style-type: none"> Measures taken to maximise sample recovery and ensure representative nature of the samples. Whether a relationship exists between sample recovery and grade and whether sample bias may have occurred due to preferential loss/gain of fine/coarse material. 	<p>visual estimate of the actual recovery. No such samples were reported within the significant intercept zones. Moisture categorisation was also recorded.</p> <ul style="list-style-type: none"> No information is available documenting measures to maximise sample recovery or ensure collection of representative samples. Ballymore diamond drilling: Used chrome barrels and controlled drilling in broken ground to maximise sample recovery. In addition, triple tube is used to maximise recovery. No assessment has been completed to determine if there is a relationship between sample recovery and grade, and whether there is any potential for sample bias associated with the drilling used to date.
LOGGING	<ul style="list-style-type: none"> Whether core and chip samples have been geologically and geotechnically logged to a level of detail to support appropriate Mineral Resource estimation, mining studies and metallurgical studies. Whether logging is qualitative or quantitative in nature. Core (or costean, channel, etc) photography. The total length and percentage of the relevant intersections logged. 	<ul style="list-style-type: none"> Most historic drill logs document logging for lithology, structure, alteration, mineralisation, and veining. No core photography is available. Logging information for historic holes are possibly adequate to support future Mineral Resource estimation but will be reassessed if required. Ballymore Diamond drilling: Drill core was logged for lithology, structure, alteration, mineralisation, and veining, which is deemed to be appropriate for the style of mineralisation and the lithologies encountered. All core was photographed and geotechnically logged. Logging information is adequate to support Mineral Resource estimation. Information to support geotechnical studies is available. Ballymore RC drilling: RC chips were logged for lithology, alteration, mineralisation, and veining, which is deemed to be appropriate for the style of mineralisation and the lithologies encountered. All chip trays were photographed. Logging information is adequate to support Mineral Resource estimation. Information to support geotechnical studies is available. Ballymore Diamond drilling: Logging of core is mostly qualitative, except for some semi-quantitative logging of sulphide content, quartz veining, RQD, and geotechnical parameters. Ballymore RC drilling: Logging of chips is mostly qualitative, except for some semi-quantitative logging of sulphide content, quartz veining, alteration.. Geological logs were completed for all drilled intervals.
SUB-SAMPLING TECHNIQUES AND SAMPLE PREPARATION	<ul style="list-style-type: none"> If core, whether cut or sawn and whether quarter, half or all core taken. If non-core, whether riffled, tube sampled, rotary split, etc and whether sampled wet or dry. 	<ul style="list-style-type: none"> Different companies used different sampling intervals that ranged from a nominal minimum of 1 m to a nominal maximum of 4 m. Not all drilled intervals were sampled. No information is available on whether the historic core was cut or split or the size of the core samples submitted for analysis. Ballymore diamond drilling: Ballymore cut core samples in half or quarter using a diamond saw and where appropriate used geological contacts or mineralisation to define sample intervals. No information is available on moisture content of historic percussion samples. Limited information is reported for subsampling of percussion chips. Some companies report the use of cyclones at rigs and/or spearing of sample

CRITERIA	JORC Code Explanation	Commentary
	<ul style="list-style-type: none"> For all sample types, the nature, quality, and appropriateness of the sample preparation technique. Quality control procedures adopted for all sub-sampling stages to maximise representivity of samples. Measures taken to ensure that the sampling is representative of the in situ material collected, including for instance results for field duplicate/second-half sampling. 	<p>intervals to collect a sample for laboratory analysis.</p> <ul style="list-style-type: none"> Ballymore RC drilling: RC samples were split using a rig-mounted cone splitter on 1m intervals to obtain a sample for assay, of approximate weight 3 – 5kg. Sample moisture was monitored, and water is blown out at each rod change prior to resuming drilling. Hole terminated if sample is wet. Limited details of the laboratory preparation of samples were recorded for historic drilling. It is assumed that sample preparation methods used by all commercial laboratories followed the basic steps of drying, crushing, and pulverising, but details of the amount of the sample crushed and pulverised are not known. Therefore, it is not possible to assess the quality and appropriateness of the sample preparation techniques. Ballymore diamond drilling: Half core was submitted to the laboratory, generally 2 – 3 kg per sample. All of the core was dried, crushed to -6 mm, then pulverised to 85% - 75 µm. This method is considered appropriate for mineralisation that may have visible gold mineralisation. Ballymore RC drilling: RC samples were split using a rig-mounted cone splitter on 1m intervals to obtain a sample for assay, of approximate weight 3 – 5kg. Samples were dried, crushed to -6 mm, then pulverised to 85% - 75 µm. This method is considered appropriate for mineralisation that may have visible gold mineralisation. Limited information has been recorded that documents quality control procedures adopted for all sub-sampling stages to maximise representivity of samples in historic drilling. Ballymore diamond drilling: Drill core samples of cut core were consistently taken from the same side of the orientation line on the core to maintain consistency. All of the sample was crushed and pulverised to maximise sample representativity. Pulverised samples were tested for compliance to grinding specifications at the rate of 1 in 40. Ballymore RC drilling: RC samples were split using a rig-mounted cone splitter on 1m intervals to obtain a sample for assay, of approximate weight 3 – 5kg. All of the sample was crushed and pulverised to maximise sample representativity. Pulverised samples were tested for compliance to grinding specifications at the rate of 1 in 40. No information has been recorded that documents measures taken to ensure that the sampling is representative of the in situ material collected in historic drilling. Ballymore diamond drilling: QA/QC procedures included the insertion of quarter core field duplicates at the insertion rate of 1 in 20 samples. Field blanks were also submitted to the laboratory. Ballymore RC drilling: QA/QC procedures included the insertion of field duplicates at the insertion rate of 1 in 20 samples. Field blanks were also submitted to the laboratory.

CRITERIA	JORC Code Explanation	Commentary
	<ul style="list-style-type: none"> Whether sample sizes are appropriate to the grain size of the material being sampled. 	<ul style="list-style-type: none"> Ballymore soil sampling: Field duplicates were submitted to the laboratory. No formal assessment has been undertaken to quantify the appropriate sample size required for good quality determination of gold content, given the nature of the gold mineralisation.
QUALITY OF ASSAY DATA AND LABORATORY TESTS	<ul style="list-style-type: none"> The nature, quality and appropriateness of the assaying and laboratory procedures used and whether the technique is considered partial or total. For geophysical tools, spectrometers, handheld XRF instruments, etc, the parameters used in determining the analysis including instrument make and model, reading times, calibrations factors applied and their derivation, etc. 	<ul style="list-style-type: none"> Limited detailed information has been recorded that documents the nature, quality, and appropriateness of assaying methods used for any of the historic drilling programs. Where gold was analysed, it was undertaken by aqua regia digest and AAS finish, or more generally by fire assay method. Where other elements were analysed, earlier programs tended to analyse for a limited suite e.g., Cu, Pb, Zn, Ag. Some later programs used a large multi-element suite analysed by ICP. Ballymore 2021 drilling and rock chip samples were analysed at ALS Townsville and Intertek Townsville using a multi-element suite by aqua regia digestion and ICP-MS finish. For most elements, this is considered as a total analysis. Gold was analysed with a 50 g charge used for fire assay with an ICP-AES determination. Normally the gold analysis would be considered a total analysis. Ballymore 2022, 2024 & 2025-26 drilling: Intertek Townsville Laboratory was used. Gold assays were analysed with a 50 g charge used for fire assay with an ICP-AES determination. In addition, a 0.25 g charge was taken for analysis for 48 elements (Ag, Al, As, Ba, Be, Bi, Ca, Cd, Ce, Co, Cr, Cs, Cu, Fe, Ga, Ge, Hf, In, K, La, Li, Mg, Mn, Mo, Na, Nb, Ni, P, Pb, Rb, Re, S, Sb, Sc, Se, Sn, Sr, Ta, Te, Th, Ti, Tl, U, V, W, Y, Zn, Zr) utilising a four-acid digest with an ICP-MS determination. Any over range Cu (>10000 ppm) was re-analysed using a standard Ore Grade method utilising a four-acid digest producing a volumetrically precise digest analysed with an ICP-AES finish for high detection limits. The fire assay method for gold using either a 30 g or 50 g charge is an appropriate assay method and is normally considered a total assay method, except where gold grain size is very coarse. In 2015 ActivEX completed a pXRF soil survey over the King Solomon – Rose of Allandale workings on EPM 18637. 1,117 readings acquired on north-south traverses spaced 50 m apart with a nominal reading interval of 100 – 200 m. The survey was carried out using a Niton XL3t-950 handheld XRF analyser on 'Soil' mode, using three filters, each with 30 second duration to give a total analysing time of 90 seconds. Soil samples were prepared by scuffing a 10 cm² area to remove any light vegetation and immediate topsoil. The instrument was then used to analyse the area directly. The analyser window was checked for any foreign contaminant between samples. Niton XL3t-950 handhelds are able to detect 34 elements on 'Soil' mode, using three filters, each with 30 second duration (Ag, As, Au, Ba, Ca, Cd, Co, Cr, Cs, Cu, Fe, Hg, K, Mn, Mo, Ni, Pb, Pd, Rb, S, Sb, Sc, Se, Sn, Sr, Te, Th, Ti, U, V, W, Y, Zn, Zr).

CRITERIA	JORC Code Explanation	Commentary
	<ul style="list-style-type: none"> Nature of quality control procedures adopted (e.g., standards, blanks, duplicates, external laboratory checks) and whether acceptable levels of accuracy (i.e., lack of bias) and precision have been established. 	<ul style="list-style-type: none"> Limited details of the use of standards or certified reference materials have been reported for historic drilling. Ballymore drilling: In addition to blanks and field duplicates, 4 commercial CRMs of low grade to high grade gold ore material were prepared and certified for Au, Ag and Cu by Ore Research & Exploration Services Pty Ltd. These were incorporated into the sampling stream to achieve an overall insertion rate of 1 duplicate, blank or CRM for every 10 core samples.
<p>VERIFICATION OF SAMPLING AND ASSAYING</p>	<ul style="list-style-type: none"> The verification of significant intersections by either independent or alternative company personnel. The use of twinned holes. Documentation of primary data, data entry procedures, data verification, data storage (physical and electronic) protocols. 	<ul style="list-style-type: none"> It has not been possible to independently verify significant intersections for historic drilling. There has been no use of twinned holes to date. Ballymore has collated and created a digital database of previous exploration completed at the Project. Ballymore drilling: Primary logging data was recorded digitally onto electronic spread sheets and validated against code tables by the logging geologist. Primary analytical data was received electronically in csv file format and imported directly into an electronic assay register spread sheet. Data validation was conducted by comparing the spreadsheet data against the Certificate of Analysis supplied as a secured pdf file by the laboratory.
<p>LOCATION OF DATA POINTS</p>	<ul style="list-style-type: none"> Discuss any adjustment to assay data. Accuracy and quality of surveys used to locate drill holes (collar and down-hole surveys), trenches, mine workings and other locations used in Mineral Resource estimation. 	<ul style="list-style-type: none"> No adjustments to assay data have been made. No details of the accuracy and quality of surveys used to locate drillholes (collar and down-hole surveys) is recorded. Drillhole collar locations were typically based on local grids and the accuracy of drill collars has not been verified to date. Ballymore surface geochemical sampling is surveyed using a handheld GPS with a location error of +/- 5m. Ballymore surface drilling: Drillhole collar locations were initially set out (and reported) using a handheld GPS with a location error of +/- 5m. All holes were subsequently surveyed by contract surveyor to a sub-metre accuracy, with data supplied electronically as spreadsheets and pdf files. The azimuth and dip at the start of the hole was recorded using a line of sight Suunto compass and Suunto clinometer by the site geologist. The orientation and dip of drillholes are measured with downhole surveys @ 15 m, 30 m, then every 30 m using a REFLEX single/multi-shot survey tool. End of hole surveys were also taken for each hole. At hole completion, holes were gyro surveyed.
<p>DATA SPACING AND DISTRIBUTION</p>	<ul style="list-style-type: none"> Specification of the grid system used. Quality and adequacy of topographic control. Data spacing for reporting of Exploration Results. Whether the data spacing and distribution is sufficient to establish the degree of geological and grade continuity appropriate for the Mineral Resource and Ore Reserve estimation procedure(s) and classifications applied. 	<ul style="list-style-type: none"> The co-ordinate system used is MGA94 zone 55 Datum. Quality of the topographic control data is poor and is currently reliant on public domain data. There is a relatively small amount of drilling to date at Seventy Mile Mount, Matthews Pinnacle, Puddler Creek, Day Dawn, Radical, Cockfields, Lighthorse, Just In Time, Westgate, Matthews South, Rishton Sands and Red Dust prospects. The spacing of drillhole data is variable. There are no Mineral Resources or Ore Reserves. There is insufficient drill spacing to establish the degree of geological and grade continuity

CRITERIA	JORC Code Explanation	Commentary
	<ul style="list-style-type: none"> Whether sample compositing has been applied. 	<p>appropriate for Mineral Resource and Ore Reserve estimation.</p> <ul style="list-style-type: none"> Some sample compositing was carried out on site within some of the percussion drilling e.g., Aurora Gold (1993) composited the 1 m RC drillhole samples into 4 m composites for initial analysis, and Rishton Gold (1996) composited the 1 m RC drillhole samples into 3 m composites. For reporting purposes, some drillhole assay results have been composited together to report contiguous zones of mineralisation.
ORIENTATION OF DATA IN RELATION TO GEOLOGICAL STRUCTURE	<ul style="list-style-type: none"> Whether the orientation of sampling achieves unbiased sampling of possible structures and the extent to which this is known, considering the deposit type. If the relationship between the drilling orientation and the orientation of key mineralised structures is considered to have introduced a sampling bias, this should be assessed and reported if material. 	<ul style="list-style-type: none"> Previous drillholes were generally sited to intersect interpreted mineralised zones at a high angle, however, only limited drilling has been completed to date and further drilling will be required to establish the optimal orientation. To the extent known, drilling is assumed to be unbiased. No sampling bias is considered to have been introduced in drilling completed.
SAMPLE SECURITY	<ul style="list-style-type: none"> The measures taken to ensure sample security. 	<ul style="list-style-type: none"> No chain of custody is documented for previous drilling. For Ballymore sampling programs, all work was supervised by company staff. Samples were double bagged, palletised and shrink wrapped at the core shed before dispatch to the laboratory.
AUDITS OR REVIEWS	<ul style="list-style-type: none"> The results of any audits or reviews of sampling techniques and data. 	<ul style="list-style-type: none"> Ballymore programs: Internal auditing procedures and reviews were regularly undertaken on sampling techniques, standard operating procedures, and laboratory processes. Derisk has completed a review of the work Ballymore has undertaken.

Section 2: Reporting of Exploration Results

CRITERIA	JORC Code explanation	Commentary
MINERAL TENEMENT AND LAND TENURE STATUS	<ul style="list-style-type: none"> Type, reference name/number, location and ownership including agreements or material issues with third parties such as joint ventures, partnerships, overriding royalties, native title interests, historical sites, wilderness or national park and environmental settings. The security of the tenure held at the time of reporting along with any known impediments to obtaining a licence to operate in the area. 	<ul style="list-style-type: none"> The Project tenements comprise EPM 18424, EPM 18426, EPM 18637, EPM 25466, EPM 25467, EPM 28565. Ballymore earned its initial 51% stake in the project comprising EPM 18424, EPM 18426, EPM 18637, EPM 25466 & EPM 25467 and subsequently acquired the remaining 49% from ActivEX on 18th November 2021. Ballymore also applied for EPM 28565 and had it granted in May 2024. All tenements are in good standing.
EXPLORATION DONE BY OTHER PARTIES	<ul style="list-style-type: none"> Acknowledgment and appraisal of exploration by other parties. 	<ul style="list-style-type: none"> Numerous exploration permits and mining leases have been held over parts and/or all of the Project area. Previous exploration has included geological mapping, soil and rock chip geochemical sampling, airborne and ground geophysics, plus RC and diamond drilling. Major programs included: <ul style="list-style-type: none"> Aberfoyle Exploration (1983 – 1985) completed an IP survey, VLF EM survey, horizontal loop EM, geological mapping, soil sampling, petrology,

CRITERIA	JORC Code explanation	Commentary
		<p>ground magnetic survey, panned concentrate samples, percussion drilling around Seventy Mile Mount and Middle Mount (5 holes for 586 m).</p> <ul style="list-style-type: none"> ○ Pajingo Gold Mine/Battle Mountain (Australia) Inc (1985 – 1988) completed reconnaissance and detailed mapping, prospecting, costeaning, rock chip sampling, drilling at Cockfields and Seventy Mile Creek (19 holes for 449.5 m). ○ Aurora Gold Limited/North Queensland Resources/Newmont Holdings /BHP Minerals (1981 – 1994) completed work including photogeological interpretation, rock chip sampling, stream sediment sampling, soil sampling, geological mapping, percussion drilling (9 holes for 394 m), magnetic susceptibility traverses, metallurgical testwork, engineering studies, resource estimates, ore reserves. Key prospects explored within the Ravenswood project included Day Dawn, Radical, Cornishman and Alfonso. ○ Pan Australian Mining (1982 – 1992) completed airborne magnetics/radiometrics, geological mapping, aerial photography, BCL stream sediment sampling, prospecting, rock chip sampling, gridding, ground magnetics, trenching and percussion drilling at Lighthorse and Just In Time (11 holes for 321.5 m). ○ Esso Australia (1983 – 1985) completed stream sediment sampling, mapping, literature review, aerial photography, re-interpretation of stream sediment data, petrology, trenching at Matthew Pinnacle, Matthews South and Westgate (30 trenches for 1,164 m), RC drilling at Westgate, Puddler Creek, Pinnacle Creek, and Matthews Pinnacle (13 holes for 682 m) and diamond drilling at Westgate and Pinnacle Creek (4 holes for 239 m). ○ Mount Leyshon Gold Mines (1991 – 2009) completed geological mapping, rock chip sampling, soil sampling, aerial photography, ground magnetic survey, gravity survey, 3D pole – dipole IP survey, RAB drilling, RC drilling, diamond drilling at Puddler Creek, Seventy Mile Mount, Matthews Pinnacle (145 holes for 14,568.77 m). ○ Rishton Gold (1995 – 2008) completed desktop studies, literature review, ground reconnaissance, geological mapping, ground magnetics survey, gridding, soil sampling, rock chip sampling, aircore bedrock drilling at Rishton Sands (57 holes for 1,140 m). ○ Union Oil Development Corporation (1988 – 1989) reviewed multispectral data, completed reconnaissance and grid mapping at Mt Cornishman, rock chip sampling, stream sediment sampling, acquisition of aeromagnetic and radiometric data, RC drilling at Red Dust (15 holes for 630 m).
GEOLOGY	<ul style="list-style-type: none"> ● Deposit type, geological setting, and style of mineralisation. 	<ul style="list-style-type: none"> ● The Ravenswood Project is located within the Ravenswood Batholith in the Mount Windsor Subprovince of the Charters Towers Province, within the Thomson Orogen, part of the northern Tasman Fold Belt System. ● Ballymore considers that the Project is prospective for: <ul style="list-style-type: none"> ○ Devonian intrusive-hosted mesothermal gold veins e.g., Charters Towers Goldfield. ○ Carboniferous intrusive-hosted mesothermal gold veins e.g., Ravenswood Goldfield. ○ Early Permian breccia-hosted gold systems e.g., Mount Leyshon, Mount Wright, Welcome Breccia.

CRITERIA	JORC Code explanation	Commentary
		<ul style="list-style-type: none"> ○ Late Palaeozoic low sulphidation epithermal gold veins e.g., Pajingo group. ○ Cambrian polymetallic volcanic-hosted massive sulphides e.g., Mount Windsor deposits.
DRILL HOLE INFORMATION	<ul style="list-style-type: none"> ● A summary of all information material to the understanding of the exploration results including a tabulation of the following information for all Material drill holes: <ul style="list-style-type: none"> – Easting and northing of the drill hole collar. – Elevation or RL (Reduced Level – elevation above sea level in metres) of the drill hole collar. – Dip and azimuth of the hole. – Down hole length and interception depth. – Hole length. 	<ul style="list-style-type: none"> ● Refer to Appendix 3.
	<ul style="list-style-type: none"> ● If the exclusion of this information is justified on the basis that the information is not Material and this exclusion does not detract from the understanding of the report, the Competent Person should clearly explain why this is the case. 	<ul style="list-style-type: none"> ● Refer to Appendix 3.
DATA AGGREGATION METHODS	<ul style="list-style-type: none"> ● In reporting Exploration Results, weighting averaging techniques, maximum and/or minimum grade truncations (e.g., cutting of high grades) and cut-off grades are usually Material and should be stated. 	<ul style="list-style-type: none"> ● The mineralised drill intersections are reported as downhole intervals and were not converted to true widths. Where gold repeats were recorded, the average of all the samples was used. True widths may be up to 50% less than drill intersections pending confirmation of mineralisation geometry. ● No capping of high grades was performed in the aggregation process.
	<ul style="list-style-type: none"> ● Where aggregate intercepts incorporate short lengths of high grade results and longer lengths of low grade results, the procedure used for such aggregation should be stated and some typical examples of such aggregations should be shown in detail. 	<ul style="list-style-type: none"> ● The drill intercepts reported were calculated using a 0.1, 0.5, 1.0 and 10.0 g/t Au cut-off grade. Gold grade for the intercept was calculated as a weighted average grade. Up to 2 m (down hole) of internal waste (< 0.5 g/t Au) was included in some cases.
	<ul style="list-style-type: none"> ● The assumptions used for any reporting of metal equivalent values should be clearly stated. 	<ul style="list-style-type: none"> ● No metal equivalents are reported.
RELATIONSHIP BETWEEN MINERALISATION WIDTHS AND INTERCEPT LENGTHS	<ul style="list-style-type: none"> ● These relationships are particularly important in the reporting of Exploration Results. 	<ul style="list-style-type: none"> ● Overall, previous drilling orientation and sampling was generally as perpendicular to the mineralisation targets as practicable.
	<ul style="list-style-type: none"> ● If the geometry of the mineralisation with respect to the drill hole angle is known, its nature should be reported. 	<ul style="list-style-type: none"> ● The geometry of the various drill targets has generally been established through mapping and most mineralisation is typically hosted in sub-vertical veining and breccia bodies. Nevertheless, further work is required to establish the optimal angle to test the mineralisation.
	<ul style="list-style-type: none"> ● If it is not known and only the down hole lengths are reported, there should be a clear statement to this effect (e.g., 'down hole length, true width not known'). 	<ul style="list-style-type: none"> ● The mineralised intercepts generally intersect the interpreted dip of the mineralisation at a high angle but are not true widths.
DIAGRAMS	<ul style="list-style-type: none"> ● Appropriate maps and sections (with scales) and tabulations of intercepts should be included for any significant discovery being reported. These should include, but not be limited to a plan view of drill hole collar locations and appropriate sectional views. 	<ul style="list-style-type: none"> ● Refer to figures contained within this report.
BALANCED REPORTING	<ul style="list-style-type: none"> ● Where comprehensive reporting of all Exploration Results is not practicable, representative reporting of both low and high grades and/or widths should be practiced to avoid misleading reporting of Exploration Results. 	<ul style="list-style-type: none"> ● Balanced reporting of Exploration Results is presented within this report.

CRITERIA	JORC Code explanation	Commentary
OTHER SUBSTANTIVE EXPLORATION DATA	<ul style="list-style-type: none"> Other exploration data, if meaningful and material, should be reported including (but not limited to): geological observations; geophysical survey results; geochemical survey results; bulk samples – size and method of treatment; metallurgical test results; bulk density, groundwater, geotechnical and rock characteristics; potential deleterious or contaminating substances. 	<ul style="list-style-type: none"> The Project includes a large amount of exploration data collected by previous companies, including regional stream sediment geochemical data, soil sample and rock chip data, geological mapping data, drilling data, geophysical survey data, and costean data. Much of this data has been captured and validated into a GIS database. Previous mining has been limited and involved very selective mining and hand sorting. Limited systematic data has been collected to date to assess metallurgy and mining parameters relevant to a modern operation.
FURTHER WORK	<ul style="list-style-type: none"> The nature and scale of planned further work (e.g., tests for lateral extensions or depth extensions or large-scale step-out drilling). Diagrams clearly highlighting the areas of possible extensions, including the main geological interpretations and future drilling areas, provided this information is not commercially sensitive. 	<ul style="list-style-type: none"> Ballymore plans to conduct surface geological mapping and geochemistry, and drilling across various high-priority target areas over the next two years. Refer to figures contained within this report.

APPENDIX 2. BALLYMORE SEVENTY MILE MOUNT DRILL COLLAR INFORMATION

Company	Target	HoleID	Hole Type	East (MGA)	North (MGA)	RL	Depth (m)	Dip (°)	Azimuth (° MGA)	Licence	Year
Ballymore	Seventy Mile Mount	BSMDD006	Diamond	431599	7761442	365	435.2	-57	91	EPM 18424	2025
Ballymore	Seventy Mile Mount	BSMDD007	Diamond	431599	7761444	365	423	-50	102	EPM 18424	2025/26

APPENDIX 3. BALLYMORE PINNACLE ROCK CHIP SAMPLE INFORMATION

Sample ID	EPM	Prospect	East MGA94	North MGA94	RL	Sample Type	Au (ppm)	Ag (ppm)	As (ppm)	Cu ppm	Pb (ppm)	Zn (ppm)
SMM122	EPM 18424	Seventy Mile Mount	430640	7761019	321	Outcrop	0.074	0.55	64	133.3	101	213
SMM123	EPM 18424	Seventy Mile Mount	430708	7761121	321	Outcrop	1.638	16.73	117.6	1150.1	5238	1027
SMM124	EPM 18424	Seventy Mile Mount	430426	7761251	325	Outcrop	0.127	1.43	57.8	118.5	61.3	46
SMM125	EPM 18424	Seventy Mile Mount	429835	7761233	320	Float	0.566	24.80	388.2	1376	30433	1739
SMM126	EPM 18424	Pinnacle Creek	428392	7760001	329	Outcrop	-0.005	0.08	8.3	9	7.7	133
SMM127	EPM 18424	Pinnacle Creek	428395	7760007	329	Outcrop	33.732	63.52	43.9	7192.8	506.2	2435
SMM128	EPM 18424	Pinnacle Creek	428398	7760013	328	Outcrop	0.173	2.25	14.9	680.3	22.9	121
SMM129	EPM 18424	Pinnacle Creek	428468	7760015	321	Outcrop	2.943	20.01	76.3	409.5	914	932
SMM130	EPM 18424	Pinnacle Creek	428530	7760025	319	Float	9.397	49.09	146.3	1426.5	26308	1107
SMM131	EPM 18424	Pinnacle Creek	428531	7760021	317	Outcrop	4.978	39.59	62.1	1114	2096.9	2556
SMM132	EPM 18424	Pinnacle Creek	428602	7759994	326	Outcrop	7.972	40.96	88.6	759.3	19336	434
SMM133	EPM 18424	Pinnacle Creek	428691	7759969	319	Outcrop	4.008	30.95	209.7	861.6	2356.9	1185
SMM134	EPM 18424	Pinnacle Creek	428742	7759936	321	Outcrop	0.494	8.58	157.6	542.5	1512	3123
SMM135	EPM 18424	Pinnacle Creek	428746	7759938	309	Outcrop	0.203	3.29	11.5	177.1	267.8	120
SMM136	EPM 18424	Pinnacle Creek	428381	7760040	327	Outcrop	0.149	7.17	20.8	233.5	168	437
SMM137	EPM 18424	Pinnacle Creek	428619	7760021	320	Outcrop	0.968	64.23	170.5	5959.4	17990	3131
SMM138	EPM 18424	Pinnacle Creek	428692	7760066	329	Float	0.013	2.97	35.8	81.4	457.9	64
SMM139	EPM 18424	Pinnacle Creek	428598	7760123	326	Outcrop	0.026	0.28	10.5	109.4	47.3	316
SMM140	EPM 18424	Pinnacle Creek	428591	7760064	320	Outcrop	0.476	13.01	175	351.2	824.3	516
SMM141	EPM 18424	Pinnacle Creek	428569	7760065	332	Outcrop	4.102	12.10	63.2	518.2	303.2	1785
SMM142	EPM 18424	Pinnacle Creek	428460	7760163	332	Outcrop	0.018	1.00	14	67	85.4	379
SMM143	EPM 18424	Pinnacle Creek	428471	7760165	332	Outcrop	0.025	0.90	10.1	94.5	41.6	67
SMM144	EPM 18424	Pinnacle Creek	428491	7760155	329	Outcrop	0.861	7.86	571.7	451.1	2014.4	3753
SMM145	EPM 18424	Pinnacle Creek	428509	7760068	327	Float	0.297	17.30	38	717.5	7591.8	709
SMM146	EPM 18424	Pinnacle Creek	428496	7760086	325	Outcrop	24.557	95.51	161.9	483.6	77797	308
SMM147	EPM 18424	Pinnacle Creek	428387	7760013	318	Outcrop	25.392	104.92	83.7	1337	1305.5	364
SMM148	EPM 18424	Pinnacle Creek	428420	7760124	323	Outcrop	8.413	35.06	138.1	1219.3	15533	1389
SMM149	EPM 18424	Pinnacle Creek	428482	7760047	328	Outcrop	0.197	1.53	6.1	28.5	798.1	35
SMM150	EPM 18424	Pinnacle Creek	428342	7760096	333	Outcrop	0.12	1.00	13.1	31.1	155.7	61
SMM151	EPM 18424	Pinnacle Creek	428923	7759923	314	Outcrop	0.043	0.68	6.6	21.6	157.8	410

Sample ID	EPM	Prospect	East MGA94	North MGA94	RL	Sample Type	Au (ppm)	Ag (ppm)	As (ppm)	Cu ppm	Pb (ppm)	Zn (ppm)
SMM152	EPM 18424	Pinnacle Creek	428920	7759917	306	Float	0.073	5.09	19.4	414.5	115.6	93
SMM153	EPM 18424	Pinnacle Creek	428926	7760082	321	Mullock	0.022	0.43	1.7	11.2	60	71
SMM154	EPM 18424	Pinnacle Creek	428945	7760100	321	Float	0.022	0.19	8.1	10	52.4	20
SMM155	EPM 18424	Pinnacle Creek	428932	7760109	327	Float	0.029	5.27	6.9	126.3	2982.9	100
SMM156	EPM 18424	Pinnacle Creek	428914	7760108	326	Float	4.782	37.72	66	278.2	60306	152
SMM157	EPM 18424	Pinnacle Creek	429017	7759915	315	Float	0.027	0.46	10.7	58.2	287.5	96
SMM158	EPM 18424	Pinnacle Creek	429360	7759586	322	Float	0.006	0.12	0.8	6.2	85.4	6
SMM159	EPM 18424	Matthews South	430216	7758277	316	Float	0.021	1.11	4	6.4	468.7	153
SMM160	EPM 18424	Matthews South	430256	7758306	299	Outcrop	0.554	22.34	174.8	536.8	21898	1945
SMM161	EPM 18424	Matthews South	430293	7758323	317	Outcrop	0.165	0.51	27.2	123.1	82.2	113
SMM162	EPM 18424	Matthews South	430108	7758346	309	Outcrop	-0.005	0.32	2	11.9	94.4	20
SMM163	EPM 18424	Matthews South	430083	7758344	316	Outcrop	0.011	0.70	6.7	22.4	444	72
SMM164	EPM 18424	Matthews South	430071	7758376	314	Outcrop	0.022	10.65	266.1	974.4	123.6	239
SMM165	EPM 18424	Matthews South	430175	7758632	317	Float	0.597	29.27	70.8	168.3	1052.9	389
SMM166	EPM 18424	Matthews South	430279	7758758	319	Float	3.91	334.60	232.2	3133.1	85568	2183
SMM167	EPM 18424	Matthews South	430275	7758934	312	Float	0.08	3.10	21.6	177.4	567.7	34
SMM168	EPM 18424	Matthews South	430261	7758929	313	Float	0.06	2.27	19.4	302.4	148	64
SMM169	EPM 18424	Matthews South	430211	7758863	303	Float	0.031	2.78	51.1	178.9	349.8	50
SMM170	EPM 18424	Matthews South	430240	7758857	313	Float	1.751	25.59	57.6	960.9	5638.8	485
SMM171	EPM 18424	Matthews South	430261	7758803	310	Float	1.428	85.44	36.9	1014.5	13922	7917
SMM172	EPM 18424	Matthews South	430270	7758793	314	Float	1.493	28.38	70.2	1947.4	8039.9	455
SMM173	EPM 18424	Matthews South	430355	7758562	313	Float	0.155	1.57	23.1	699.7	142.3	261
SMM174	EPM 18424	Matthews South	430344	7758601	308	Float	0.353	2.57	16.7	167	98	72
SMM175	EPM 18424	Matthews South	430286	7758714	313	Float	4.204	26.43	47.6	536.7	3755.9	299
SMM176	EPM 18424	Matthews South	430288	7758721	315	Float	0.736	48.12	118.7	2247.1	4799.2	341
SMM177	EPM 18424	Matthews South	430272	7758735	311	Float	3.65	124.45	520.7	821.4	65142	11302
SMM178	EPM 18424	Matthews South	430268	7758781	310	Float	9.156	57.90	220	955.9	82019	1681
SMM179	EPM 18424	Matthews South	430127	7759081	302	Subcrop	0.113	92.31	288.2	3096.2	67191	9135
SMM180	EPM 18424	Matthews South	430398	7758626	312	Subcrop	0.048	7.82	9.6	239.6	892.4	152
SMM181	EPM 18424	Matthews South	430451	7758624	313	Subcrop	1.79	75.24	149.5	2076.7	3155.4	2402
SMM182	EPM 18424	Matthews South	430300	7758676	315	Float	0.345	7.09	55.5	1043.3	1469.6	179
SMM185	EPM 18424	Matthews South	430656	7758998	317	Outcrop	-0.005	-0.05	2.3	4.2	24.7	24
SMM186	EPM 18424	Matthews South	430655	7758998	316	Outcrop	-0.005	-0.05	7.3	7.3	19.7	26

Sample ID	EPM	Prospect	East MGA94	North MGA94	RL	Sample Type	Au (ppm)	Ag (ppm)	As (ppm)	Cu ppm	Pb (ppm)	Zn (ppm)
SMM187	EPM 18424	Matthews South	430889	7759100	304	Float	0.85	8.51	5190	2231.2	2011.5	3065
SMM188	EPM 18424	Matthews South	430921	7759117	306	Float	0.041	0.13	226	179.6	22.1	452
SMM189	EPM 18424	Matthews South	430905	7759116	302	Subcrop	0.219	9.95	368.4	1973.7	232.7	1059
SMM190	EPM 18424	Matthews South	430906	7759118	309	Subcrop	0.06	0.98	258.7	3349.1	103.4	832
SMM191	EPM 18424	Matthews South	430911	7759146	306	Outcrop	0.092	2.39	769.6	747	305.4	1322
SMM192	EPM 18424	Matthews South	430911	7759147	308	Outcrop	0.186	0.51	335.8	700.4	502.4	1609
SMM193	EPM 18424	Matthews South	430910	7759146	307	Outcrop	0.048	0.70	135.7	151.3	14.6	51
SMM194	EPM 18424	Westgate	430037	7758110	315	Outcrop	0.581	7.93	478.6	316.6	4889.1	623
SMM195	EPM 18424	Westgate	430062	7758083	313	Outcrop	0.012	0.85	53.9	32.1	50.9	843
SMM196	EPM 18424	Westgate	430099	7758080	314	Outcrop	0.01	9.00	113	257.3	52	3916
SMM197	EPM 18424	Westgate	430065	7757964	309	Outcrop	8.017	532.00	3548.3	1519.2	77933	58946
SMM198	EPM 18424	Westgate	430066	7757977	311	Outcrop	4.242	69.98	9015.1	149.1	25882	1596
SMM199	EPM 18424	Westgate	430064	7757973	312	Outcrop	3.717	356.01	6823.9	564.2	22267	1079
SMM200	EPM 18424	Westgate	429657	7758234	318	Subcrop	0.093	11.02	117.7	1312.2	763.5	810
SMM201	EPM 18424	Westgate	429602	7758252	318	Subcrop	0.147	7.14	213	1149.4	555.9	1310
SMM202	EPM 18424	Pinnacle Creek	429005	7760569	333	Outcrop	0.771	2.49	227.3	988.2	237.2	836
SMM203	EPM 18424	Pinnacle Creek	429010	7760571	325	Outcrop	0.023	2.51	36.4	393.3	105.1	227
SMM204	EPM 18424	Matthews Pinnacle	429489	7760205	408	Subcrop	0.261	6.09	374.3	129.4	391.6	428
SMM206	EPM 18424	Westgate	430112	7757987	308	Outcrop	-0.005	0.57	165	11.3	791.9	219
SMM207	EPM 18424	Westgate	429815	7758572	320	Outcrop	0.007	2.02	7	76.7	1476.8	789
SMM208	EPM 18424	Westgate	429563	7758362	317	Outcrop	0.455	6.33	142.4	242.8	120.5	136
SMM209	EPM 18424	Westgate	429559	7758327	315	Outcrop	0.41	12.97	147.9	150.4	230.5	76
SMM210	EPM 18424	Westgate	429565	7758301	315	Outcrop	0.017	4.71	16.4	85.6	77.5	25
SMM211	EPM 18424	Westgate	429595	7758231	314	Outcrop	0.692	3.59	223.4	1428.9	172.8	195
SMM212	EPM 18424	Westgate	430071	7757954	307	Outcrop	2.296	187.87	11776	1746	126776	7212

APPENDIX 4. BALLYMORE PINNACLE STREAM SEDIMENT SAMPLE INFORMATION

Sample ID	EPM	East MGA94	North MGA94	RL	Sample Type	Au (ppm)	Ag (ppm)	As (ppm)	Cu ppm	Pb (ppm)	Zn (ppm)
MLSS014	EPM 18424	428113	7756675	303	-80 Mesh	-0.005	0.07	6	27.5	17.7	58
MLSS015	EPM 18424	427624	7756678	312	-80 Mesh	0.379	0.07	6.7	36	12.7	61
MLSS016	EPM 18424	427606	7756655	313	-80 Mesh	-0.005	-0.05	4.1	62.8	11.6	53
MLSS017	EPM 18424	427350	7756517	319	-80 Mesh	0.01	0.06	3.3	46	12.9	29
MLSS018	EPM 18424	427341	7756527	317	-80 Mesh	0.007	0.05	5	19.6	18.6	48
MLSS019	EPM 18424	427257	7756881	318	-80 Mesh	0.008	0.06	5.1	20	61.5	50
MLSS020	EPM 18424	427219	7756935	318	-80 Mesh	0.045	0.05	4.1	8.9	17.1	33
MLSS021	EPM 18424	428001	7755945	319	-80 Mesh	0.008	0.11	11.3	34.8	29.8	79
MLSS022	EPM 18424	427617	7755951	326	-80 Mesh	-0.005	-0.05	3.5	18.7	17	37
MLSS023	EPM 18424	427123	7756001	330	-80 Mesh	-0.005	-0.05	2.3	7.9	11.1	23
MLSS024	EPM 18424	427776	7755639	309	-80 Mesh	0.029	0.21	11.5	118.2	40.4	621
MLSS025	EPM 18424	427201	7755189	314	-80 Mesh	0.028	0.16	7.7	40	21.1	164
MLSS026	EPM 18424	426664	7755324	326	-80 Mesh	0.091	0.39	16.6	153.2	50.5	845
MPSS008	EPM 18424	429938	7759825	322	-80 Mesh	0.682	0.39	2.6	181.1	122.6	373
MPSS009	EPM 18424	430018	7759719	310	-80 Mesh	0.024	0.44	2.1	237.1	173	407
MPSS010	EPM 18424	429967	7759649	308	-80 Mesh	0.736	0.79	2.1	180.8	64.5	373
MPSS011	EPM 18424	429828	7759691	315	-80 Mesh	0.182	0.99	3	244.4	69.2	579
MPSS012	EPM 18424	430057	7759456	303	-80 Mesh	1.084	0.37	2.3	205.8	203.6	1429
MPSS013	EPM 18424	430067	7759353	299	-80 Mesh	0.006	0.37	2.2	157.4	102.3	372
MPSS014	EPM 18424	430146	7759243	298	-80 Mesh	0.015	0.26	4.1	80.6	54.6	190
PCSS008	EPM 18424	428786	7759973	308	-80 Mesh	0.022	0.20	6.1	109.1	56.7	226
PCSS009	EPM 18424	428596	7759993	312	-80 Mesh	8.075	0.25	6.4	80.9	78.9	217
PCSS010	EPM 18424	428922	7759929	310	-80 Mesh	0.35	0.20	5.2	99.3	139.3	264
PCSS011	EPM 18424	429005	7760249	307	-80 Mesh	8.578	0.36	4.6	130.7	65.6	266
PCSS012	EPM 18424	428962	7760293	313	-80 Mesh	62.075	52.10	5.6	139.2	49.3	237
PCSS013	EPM 18424	428957	7760366	315	-80 Mesh	1.958	0.32	5.9	236	43.9	314
PCSS014	EPM 18424	429012	7760377	312	-80 Mesh	2.744	0.35	6.3	216.6	73.1	256
TBSS007	EPM 18424	430467	7760289	302	-80 Mesh	0.146	0.21	4.1	205.8	60	212
TBSS008	EPM 18424	430452	7760329	301	-80 Mesh	0.106	0.26	2.7	152	43.8	148
TBSS009	EPM 18424	429956	7760554	324	-80 Mesh	0.017	0.16	3.8	215	85	254
TBSS010	EPM 18424	429739	7760690	310	-80 Mesh	1.016	0.34	6.6	533	71.1	319
TBSS011	EPM 18424	429542	7760708	315	-80 Mesh	1.548	0.25	4	373.5	47.9	228
TBSS012	EPM 18424	430177	7760428	312	-80 Mesh	0.033	0.31	3.1	243.6	43.4	141