



ASX ANNOUNCEMENT

28 April 2026

Diamond drilling further extends high-grade shoot at Western Queen Central

Drilling at Western Queen Central returns excellent intercept of 9.45m @ 11.16 g/t gold

- Infill diamond drilling at **Western Queen Central** has successfully extended a previously delineated high-grade shoot. The intercept confirms mineralisation continues down-plunge from historical underground workings, including **9.45m @ 11.16 g/t Au** from 331.55m in hole WQDD063
- This result **further validates** a series of standout high-grade intercepts from the ongoing diamond program, including:
 - **5.8m @ 30.72g/t Au** from 315m (WQDD052)¹
 - **6.3m @ 24.88g/t Au** from 305m (WQDD057)²
 - **6.9m @ 24.81g/t Au** from 290m (WQDD059)³
- These results will be integrated into the upcoming Mineral Resource Estimate update, which is on schedule for delivery mid-year

Peter Harold, Managing Director and CEO commented:

“Great to see more high-grade intersections at Western Queen Central which should lead to a substantial upgrade of the resources at Central. Importantly, the more Indicated resources we can report the more potential there is to convert this into a Mining Inventory at Central.

The Feasibility Study is well underway and on track to be delivered mid-year along with the updated Mineral Resource Estimate. We are expecting now to incorporate material from both Western Queen South and Central which should result in a much larger mining inventory than the production target outlined in the November 2025 Scoping Study.”

Rumble Resources Limited (ASX: RTR) (“**Rumble**” or the “**Company**”) is pleased to provide an update on the diamond drilling program that commenced in October 2025 to grow and upgrade the mineral resources outlined at the Western Queen Gold and Tungsten Project (“**Western Queen**” or the “**Project**”). The drilling program finished in mid-April 2026 with a total of 17,225m drilled.

Western Queen is located in Western Australia, approximately 40 km northwest of Ramelius’s Dalgaranga Gold Project and 90km northwest of Mt Magnet. Western Queen contains resources of **370,000oz Au at 3.1g/t Au**⁴ and **13.2kt of WO₃ at 0.31% WO₃**.⁵

¹ Refer Company ASX Release dated 12 February 2026

² Refer Company ASX Release dated 14 January 2026

³ Refer Company ASX Release dated 14 March 2026

⁴ Refer Company ASX Release dated 23 July 2025

⁵ Refer Company ASX Release dated 11 August 2025

Western Queen Central – Gold mineralisation

Following the recently reported high-grade intercepts of **5.8m @ 30.72g/t Au** from 314.6m (WQDD052), **6.3m @ 24.88 g/t Au** from 305m (WQDD057) and **6.9m @ 24.81 g/t Au** from 290.1m (WQDD059) further drilling results have been received for two holes including a fourth high-grade intercept of:

- **9.45m @ 11.16 g/t Au** from 331.55m (WQDD063)

Hole WQDD063 was drilled as a 40m down-plunge step-out from WQDD052, successfully **extending high-grade mineralisation (>50 gram x metres Au) to a depth of more than 200m below the historical Western Queen Central underground workings**. This result suggests the potential for alternative lode orientations, which are currently being assessed as part of the ongoing litho-structural interpretation and modelling (see Figure 1).

Further down plunge WQDD062 encountered the mineralised position but did not return a significant intercept.

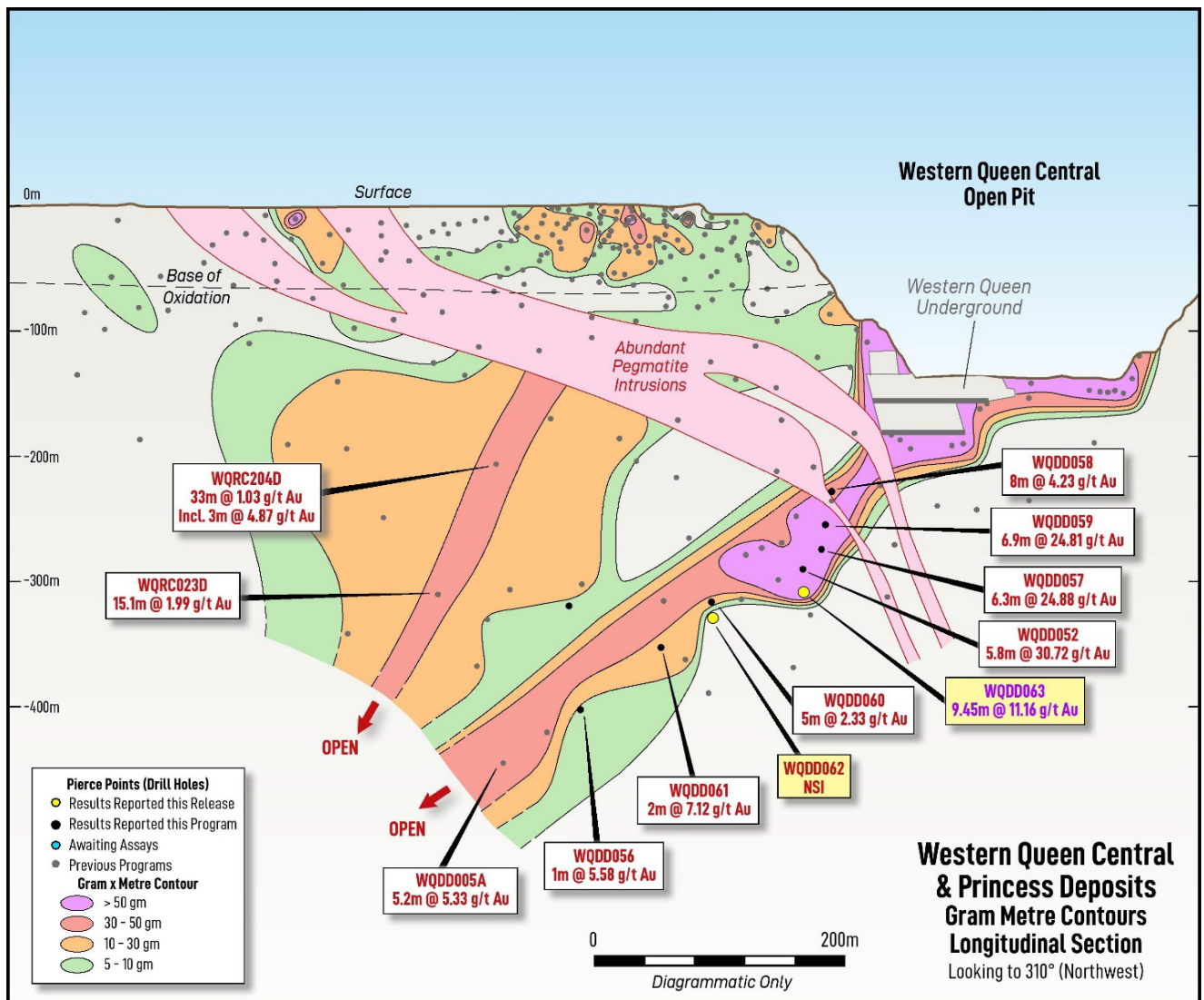


Figure 1 – Western Queen Central and Princess gram x metre contours with selected drill hole intersections - longitudinal section

Next Steps for Western Queen

Gold

- **Assay Results** - Final infill and extension diamond drilling results from drilling at Western Queen South are expected in May.
- **Metallurgical testwork** - Six diamond holes from the current infill program were selected to provide samples for the metallurgical testwork program to validate the previous high metallurgical recoveries from Western Queen South. That program has now been completed and will be reported in early May.
- **Resources update** - Report an updated gold Mineral Resource Estimate mid-year.
- **Feasibility Study** - Complete the Feasibility Study. On track for mid-year.

Tungsten

- **Final assays** - Expected in May.
- **Resources update** - Report an updated tungsten Mineral Resource Estimate mid-year.
- **Scoping Study** - Complete a mine plan and Scoping Study on the WO₃ material from Western Queen which could potentially be mined concurrently with the gold.

About Western Queen

The Western Queen Gold and Tungsten Project (“**Western Queen**” or the “**Project**”) is 90km NW of Mt Magnet within the Yalgoo mineral field of Western Australia. The Project comprises of two contiguous mining leases (M59/45 and M59/208) for a total area of 9.8 km². In addition to the mining leases, it includes L59/40 (Miscellaneous License) which covers a portion of the original haul road between Western Queen and Dalgaranga.

The Dalgaranga Plant processed the historical ore reserves from the Western Queen Central Deposit. The original haul road is still open and is the main access into the project. Rumble holds 100% equity in the project. Surrounding Western Queen is the Wardawarra Project (100% Rumble). The Wardawarra Project consists of a single granted exploration license (E20/967) and two exploration licence applications (E59/2816 and E59/3012).

Western Queen is strategically located within 200km of five gold processing plants (see Figure 2).

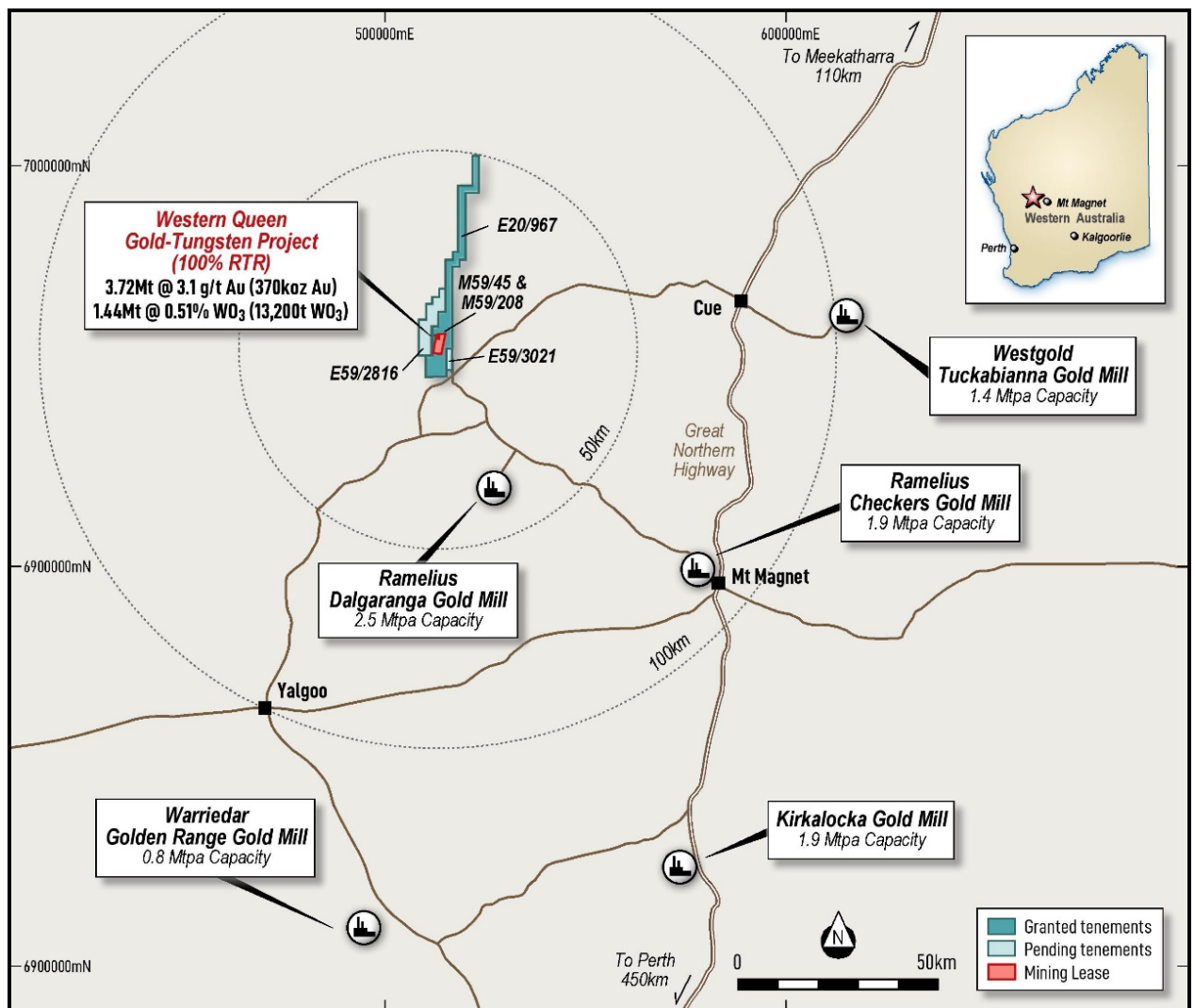


Figure 2 - Location Plan of the Western Queen Gold Project

The two deposits mined at Western Queen had a combined historical production of **880,000t @ 7.6 g/t Au for 215,000oz**. The Western Queen Central Mine produced **660,000t @ 8.9 g/t Au for 189,500oz** and the Western Queen South Mine (from two stages) produced **220,000t @ 3.6 g/t Au for 25,500oz**.

Gold

In July 2025, Rumble announced an updated Mineral Resource Estimate (Indicated and Inferred) of **3.72Mt @ 3.1 g/t Au for 370,000 oz.**

Within both the Western Queen Project area and the surrounding Wardawarra Project there is high potential to add significantly to the current resource. Gold mineralisation is associated with a structural jog zone within a major orogenic shear which trends north-south along the Wardawarra Greenstone Belt (see Figure 4).

The structural jog cuts across amphibolite (after basalt and dolerite) and ultramafic lithologies. At the Western Queen Central deposit, a very high-grade gold skarn has developed within the ultramafic rocks, with an average grade of 8.9g/t Au recorded in historical production.

At the Western Queen South deposit, high-grade gold occurs within potassic altered quartz-sulphide lodes that have developed in fine to medium grain amphibolite and plunges moderately to the south.

Tungsten

High-grade tungsten (scheelite) mineralisation was first discovered within the Western Queen South Deposit in August 2024, with drill hole WQDD013 returning 4m @ 4.58% WO₃ and 0.72 g/t Au from 174.85m. Twelve months later, Rumble announced a maiden tungsten Mineral Resource Estimate of **4.31Mt @ 0.31% WO₃ for 13.2kt WO₃.** The tungsten mineralisation occurs within a prograde skarn stage that lies closely adjacent to the gold mineralisation. Tungsten mineralisation at Western Queen remains open in all directions.

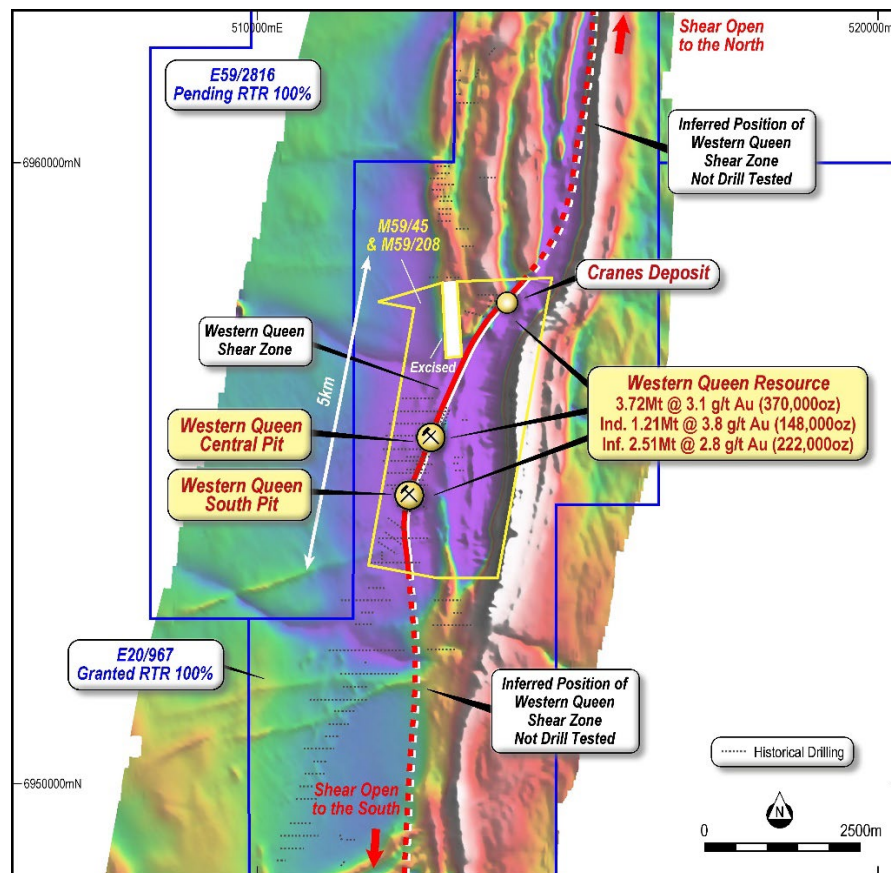


Figure 3 - Western Queen Shear Zone Prospectivity over TMI Airborne Magnetics

Authorisation

This announcement is authorised for release by the Board of the Company.

-Ends-

For further information visit rumblersources.com.au or contact info@rumblersources.com.au

Peter Harold Managing Director & CEO Rumble Resources Limited	Peter Venn Technical Director Rumble Resources Limited	Trevor Hart Chief Financial Officer Rumble Resources Limited
---	--	--

About Rumble

Rumble Resources is an Australian based exploration company, listed on the ASX in July 2011. Rumble was established with the aim of adding significant value to its selected mineral exploration assets and to search for suitable mineral acquisition opportunities in Western Australia.

Rumble has a unique suite of resources projects including the Western Queen Gold-Tungsten Project which is being developed to deliver near term cash flow from the existing underground resources and resource growth through future exploration success. In addition, the discovery of the Earahedy Zn-Pb-Ag Project has demonstrated the capabilities of the exploration team to find world class orebodies.

Competent Persons Statement

The information in this report that relates to Exploration Results and Exploration Targets is based on and fairly represents information compiled by Mr Simon Davies, who is a Member of the Australian Institute of Geoscientists. Mr Davies is an employee of Rumble Resources Limited. Mr Davies has sufficient experience relevant to the style of mineralisation and type of deposit under consideration and to the activity which he is undertaking to qualify as a Competent Person as defined in the 2012 Edition of the "Australasian Code for Reporting of Exploration Results, Mineral Resources and Ore Reserves". Mr Davies consents to the inclusion in the report of the matters based on his information in the form and context in which it appears.

Previously Reported Information

The information in this report that references previously reported exploration results is extracted from the Company's ASX market announcements released on the date noted in the body of the text where that reference appears. The previous market announcements are available to view on the Company's website or on the ASX website (www.asx.com.au). The Company confirms that it is not aware of any new information or data that materially affects the information included in the original market announcements. The Company confirms that the form and context in which the Competent Person's findings are presented have not been materially modified from the original market announcements.

Disclaimer

This report contains certain forward-looking statements and forecasts, including possible or assumed reserves and resources, production levels and rates, costs, prices, future performance or potential growth of Rumble Resources Ltd, industry growth or other trend projections. Such statements are not a guarantee of future performance and involve unknown risks and uncertainties, as well as other factors which are beyond the control of Rumble Resources Ltd. Actual results and developments may differ materially from those expressed or implied by these forward-looking statements depending on a variety of factors. Nothing in this report should be construed as either an offer to sell or a solicitation of an offer to buy or sell securities. This document has been prepared in accordance with the requirements of Australian securities laws, which may differ from the requirements of United States and other country securities laws. Unless otherwise indicated, all ore reserve and mineral resource estimates included or incorporated by reference in this document have been, and will be, prepared in accordance with the JORC classification system of the Australasian Institute of Mining, and Metallurgy and Australian Institute of Geoscientists.



Table 1 - Drill Hole Location, Survey, and Gold Assay Results

Hole ID	E MGA	N MGA	RL	Depth (m)	Dip	Azi	From (m)	To (m)	Width (m)	Au (g/t)
WQDD062	512633	6955584	372	420	-63.6	160.91	NSI			
WQDD063	512631	6955595	391	360	-66.18	135.04	331.55	341	9.45	11.16



Previous ASX Announcements – Western Queen Gold Project

- 6/8/2019 – Option to Acquire High-Grade Western Queen Gold Project
- 4/11/2019 – Western Queen Gold Project – Multiple Targets to be Drilled
- 22/11/2019 – Drilling Commenced at Western Queen Gold Project
- 17/2/2020 – High Grade Gold Discovery at the Western Queen Project
- 25/2/2020 – Drilling Commenced at the Western Queen Gold Project
- 14/4/2020 – Exploration Update – Three Drill Programs Completed
- 20/5/2020 – Drilling Identifies Multiple High-Grade Gold Shoots
- 9/6/2020 – Major Drill Program to Commence – Western Queen Gold Project
- 24/6/2020 – Major Drill Program Commenced at The Western Queen Gold Project
- 16/7/2020 – 500% Increase in Landholding Extends Western Queen Project
- 31/8/2020 – Option Exercised to Acquire the Western Queen Gold Project
- 10/9/2020 – 100% Acquisition of Western Queen Gold Project Complete
- 4/11/2020 – Discovery High-Grade Gold Shoots and Shear Zone Extension
- 3/2/2021 – High-Grade Gold Shoots at Western Queen South Deposit
- 2/8/2021 – Western Queen Resource Upgrade to 163,000oz
- 29/4/2024 – Drilling to test High-Grade Gold Zones at Western Queen
- 29/5/2024 – Western Queen Drilling Commenced
- 16/7/2024 – Western Queen Drilling Update
- 6/8/2024 – High-Grade Tungsten Discovery at Western Queen
- 2/9/2024 – Tungsten Discovery at Western Queen Confirmed
- 27/09/2024 - Rumble welcomes new Strategic Investor
- 15/10/2024 – Western Queen Gold Resources increased 76% to 287koz
- 20/11/2024 – Commencement of Drilling at Western Queen
- 28/11/2024 – Development of Western Queen Gold Project
- 11/12/2024 – High-Grade Tungsten Assays Highlights Resource Potential at WQ
- 17/2/2025 – High-grade Gold and Tungsten Assays from Phase 1 Drilling
- 28/2/2025 – Development of Western Queen Gold Project.
- 4/2/2025 – High Grade Tungsten from Historical Core
- 16/4/2025 – Western Queen - Mine Development and Exploration Update
- 30/5/2025 – Western Queen Gold Mine Development
- 4/6/2025 – High-grade Gold and Tungsten at Western Queen Project
- 23/7/2025 – Significant Increase to Western Queen Gold Resources.
- 4/8/2025 – High-Grade Tungsten Assays at Western Queen.
- 11/8/2025 – Maiden Tungsten Resource at Western Queen Project
- 01/10/2025 – Western Queen Exploration and Development Update
- 22/10/2025 - Western Queen Drilling and Development Update
- 27/11/2025 - Western Queen South Scoping Study Highlights Robust Underground Mining Project
- 22/12/2025 - Western Queen Drilling & Mine Development Update
- 14/01/2026 - Multiple high-grade gold intercepts at Western Queen including 30.72g/t Au over 5.8 metres
- 12/02/2026 - High-grade gold intercept extends Western Queen South mineralisation to over 500m down plunge
- 12/03/2026 - Western Queen continues to deliver high-grade gold and tungsten intercepts including 24.81g/t Au over 6.9m
- 25/03/2026 - Excellent Metallurgical Results for Western Queen Gold and Tungsten Project



Section 1 Sampling Techniques and Data

Criteria	JORC Code explanation	Commentary
Sampling techniques	<ul style="list-style-type: none"> Nature and quality of sampling (e.g. cut channels, random chips, or specific specialised industry standard measurement tools appropriate to the minerals under investigation, such as down hole gamma sondes, or handheld XRF instruments, etc.). These examples should not be taken as limiting the broad meaning of sampling. Include reference to measures taken to ensure sample representivity and the appropriate calibration of any measurement tools or systems used. Aspects of the determination of mineralisation that are Material to the Public Report. In cases where 'industry standard' work has been done this would be relatively simple (e.g. 'reverse circulation drilling was used to obtain 1 m samples from which 3 kg was pulverised to produce a 30 g charge for fire assay'). In other cases, more explanation may be required, such as where there is coarse gold that has inherent sampling problems. Unusual commodities or mineralisation types (e.g. submarine nodules) may warrant disclosure of detailed information. 	<ul style="list-style-type: none"> Diamond Core Sampling - Sampled to visible mineralisation or lithological boundaries. Otherwise to 1m intervals. Diamond core sampling is ½ core or ¼ core when sample is required for metallurgical test work for NQ2 and ¼ core for HQ3. Standards, blanks and duplicates inserted at a rate of 8%. 4% Standards, 2% Blanks, 2% duplicates. Additional standards, blanks and duplicates inserted where required. pXRF readings taken with a Vanta M series device every metre on clean representative core. 2 beams with 10 second run times each.
Drilling techniques	<ul style="list-style-type: none"> Drill type (e.g. core, reverse circulation, open-hole hammer, rotary air blast, auger, Bangka, sonic, etc.) and details (e.g. core diameter, triple or standard tube, depth of diamond tails, face-sampling bit or other type, whether core is oriented and if so, by what method, etc.). 	<ul style="list-style-type: none"> Diamond Rigs are Sandvik DE880s. Collars are drilled with mud rotary to refusal. HQ3 then NQ2 core is drilled. Core is oriented using a downhole AXIS ori tool.
Drill sample recovery	<ul style="list-style-type: none"> Method of recording and assessing core and chip sample recoveries and results assessed. Measures taken to maximise sample recovery and ensure representative nature of the samples. Whether a relationship exists between sample recovery and grade and whether sample bias may have occurred due to preferential loss/gain of fine/coarse material. 	<ul style="list-style-type: none"> Diamond core sample collected in trays, orientated, logged, pXRF, and photographed on site. Core was cut and sampled by Rumble staff onsite. 100% core recovery was obtained.
Logging	<ul style="list-style-type: none"> Whether core and chip samples have been geologically and geotechnically logged to a level of detail to support appropriate Mineral Resource estimation, mining studies and metallurgical studies. Whether logging is qualitative or quantitative in nature. Core (or costean, channel, etc.) photography. The total length and percentage of the relevant intersections logged. 	<ul style="list-style-type: none"> Diamond core is geologically, structurally and geotechnically logged with full orientation and photography. Core recovery is calculated based on 1m intervals. Entire diamond core logged including mineralisation and country rock. pXRF data will be used to refine logging of units, particularly using the Ti/Zr ratio. Core photographed post marking up dry and wet.
Sub-sampling techniques and sample preparation	<ul style="list-style-type: none"> If core, whether cut or sawn and whether quarter, half or all core taken. If non-core, whether riffled, tube sampled, rotary split, etc. and whether sampled wet or dry. For all sample types, the nature, quality and appropriateness of the sample preparation technique. Quality control procedures adopted for all sub-sampling stages to maximise representivity of samples. Measures taken to ensure that the sampling is representative of the in-situ material collected, including for instance results for field duplicate/second-half sampling. Whether sample sizes are appropriate to the grain size of the material being sampled. 	<ul style="list-style-type: none"> Diamond core was orientated and marked based on 1 metre or geological boundaries. The core was cut 30 degrees off the orientation mark line (retaining in tray the orientation mark). For duplicates (approximately every 20 samples), sample is split at the crushing stage at ALS Laboratories. At all times, half or quarter core was retained for future reference.
Quality of assay data and	<ul style="list-style-type: none"> The nature, quality and appropriateness of the assaying and laboratory procedures used and whether the technique is considered partial or total. For geophysical tools, spectrometers, handheld XRF 	<ul style="list-style-type: none"> Sample preparation by crushing, splitting to 3kg sample if required, and pulverising of up to 3kg.



Criteria	JORC Code explanation	Commentary
laboratory tests	<p><i>instruments, etc., the parameters used in determining the analysis including instrument make and model, reading times, calibrations factors applied and their derivation, etc.</i></p> <ul style="list-style-type: none"> • <i>Nature of quality control procedures adopted (e.g. standards, blanks, duplicates, external laboratory checks) and whether acceptable levels of accuracy (i.e. lack of bias) and precision have been established.</i> 	<ul style="list-style-type: none"> • Each metre of core was analysed by Vanta M Series pXRF, with 2 10 second beams. • Blanks and standards analysed at the beginning of each usage of pXRF. • For Gold (Au) assaying was completed by 50g charge Fire Assay with AA finish (total digest). • Certified Gold standards were industry CRMs from OREAS and Geostats which included low-grade and high-grade along with blanks.
Verification of sampling and assaying	<ul style="list-style-type: none"> • <i>The verification of significant intersections by either independent or alternative company personnel.</i> • <i>The use of twinned holes.</i> • <i>Documentation of primary data, data entry procedures, data verification, data storage (physical and electronic) protocols.</i> • <i>Discuss any adjustment to assay data.</i> 	<ul style="list-style-type: none"> • Verification of significant intersections by Rumble personnel. • No twinned holes completed. • All data and documentation are electronic, backed up to company SharePoint or Dropbox. • Logging using digital software package. pXRF, survey and other data entered using excel. • Complete hole data and assay results sent to company database administrator to load into online hosted database.
Location of data points	<ul style="list-style-type: none"> • <i>Accuracy and quality of surveys used to locate drill holes (collar and down-hole surveys), trenches, mine workings and other locations used in Mineral Resource estimation.</i> • <i>Specification of the grid system used.</i> • <i>Quality and adequacy of topographic control.</i> 	<ul style="list-style-type: none"> • Diamond drill-hole collars have been surveyed using handheld GPS. DGPS survey completed at end of program. • Rumble has flown a high-resolution DEM to ascertain topographic control for collars where the natural surface still exists. • Down-hole surveys were completed by Gyro every 20 to 30 m.
Data spacing and distribution	<ul style="list-style-type: none"> • <i>Data spacing for reporting of Exploration Results.</i> • <i>Whether the data spacing and distribution is sufficient to establish the degree of geological and grade continuity appropriate for the Mineral Resource and Ore Reserve estimation procedure(s) and classifications applied.</i> • <i>Whether sample compositing has been applied.</i> 	<ul style="list-style-type: none"> • Data spacing is based on surface DGPS drill hole pick-up including RL, and historical survey data.
Orientation of data in relation to geological structure	<ul style="list-style-type: none"> • <i>Whether the orientation of sampling achieves unbiased sampling of possible structures and the extent to which this is known, considering the deposit type.</i> • <i>If the relationship between the drilling orientation and the orientation of key mineralised structures is considered to have introduced a sampling bias, this should be assessed and reported if material.</i> 	<ul style="list-style-type: none"> • Structural orientation of mineralisation is well known. Most historical drilling is appropriately angled for this orientation. • Drilling orientation is not considered to have introduced a sampling bias.
Sample security	<ul style="list-style-type: none"> • <i>The measures taken to ensure sample security.</i> 	<ul style="list-style-type: none"> • All samples are managed and transported by Rumble personnel from mining lease to laboratory.
Audits or reviews	<ul style="list-style-type: none"> • <i>The results of any audits or reviews of sampling techniques and data.</i> 	<ul style="list-style-type: none"> • No audits completed.



Section 2 Reporting of Exploration Results

Criteria	JORC Code explanation	Commentary
Mineral tenement and land tenure status	<ul style="list-style-type: none"> Type, reference name/number, location and ownership including agreements or material issues with third parties such as joint ventures, partnerships, overriding royalties, native title interests, historical sites, wilderness or national park and environmental settings. The security of the tenure held at the time of reporting along with any known impediments to obtaining a licence to operate in the area. 	<ul style="list-style-type: none"> The Western Queen Project comprises two mining licences (M59/45 and M59/208), one exploration license E20/967 and two exploration licence applications (ELA59/2816 and ELA59/3021). Rumble owns 100% of the project. The mining licenses and exploration licence E20/967 are granted, in a state of good standing and have no known impediments. Exploration licences ELA59/2816 and ELA59/3021 are under application. Production royalties for gold include \$20/oz on existing resources with \$8/oz on new open pit resources and \$6/oz on new underground resources.
Exploration done by other parties	<ul style="list-style-type: none"> Acknowledgment and appraisal of exploration by other parties. 	<ul style="list-style-type: none"> RC and Diamond core drilling completed by Rumble 2020-2025. Previous drilling and surface sampling work by numerous other parties conducted 1980s to 2010s. Small scale mining conducted 1900s to 1930s. Modern mining conducted 1999-2012 by multiple parties.
Geology	<ul style="list-style-type: none"> Deposit type, geological setting and style of mineralisation. 	<ul style="list-style-type: none"> Deposit type is scheelite pyroxene endoskarn considered to be an early event which has been overprinted by an orogenic shear hosted gold system in Archaean greenstones of the Yilgarn Craton. The mineralised system at the Western Queen is hosted in sheared amphibolite. It is associated with sulphidic quartz veins and has an overall steep WNW dip. The mineralised zone is strongly recrystallised and massive.
Drill hole Information	<ul style="list-style-type: none"> A summary of all information material to the understanding of the exploration results including a tabulation of the following information for all Material drill holes: <ul style="list-style-type: none"> easting and northing of the drill hole collar elevation or RL (Reduced Level – elevation above sea level in metres) of the drill hole collar dip and azimuth of the hole down hole length and interception depth hole length. If the exclusion of this information is justified on the basis that the information is not Material and this exclusion does not detract from the understanding of the report, the Competent Person should clearly explain why this is the case. 	<ul style="list-style-type: none"> Table 1 - Drill Hole Location, Survey, and Gold Assay Results
Data aggregation methods	<ul style="list-style-type: none"> In reporting Exploration Results, weighting averaging techniques, maximum and/or minimum grade truncations (e.g. cutting of high grades) and cut-off grades are usually Material and should be stated. Where aggregate intercepts incorporate short lengths of high-grade results and longer lengths of low-grade results, the procedure 	<ul style="list-style-type: none"> Weighted averaging (by length) of results completed for all results. Gold Results – Intervals calculated using a 0.5g/t minimum grade cutoff and up to 2m of contiguous internal waste. Intervals with at least 5 gram metres (g/t Au x interval width) were reported.



Criteria	JORC Code explanation	Commentary
	<p><i>used for such aggregation should be stated and some typical examples of such aggregations should be shown in detail.</i></p> <ul style="list-style-type: none"> The assumptions used for any reporting of metal equivalent values should be clearly stated. 	<ul style="list-style-type: none"> No maximum cutoffs were used.
Relationship between mineralisation widths and intercept lengths	<ul style="list-style-type: none"> These relationships are particularly important in the reporting of Exploration Results. If the geometry of the mineralisation with respect to the drill hole angle is known, its nature should be reported. If it is not known and only the down hole lengths are reported, there should be a clear statement to this effect (e.g. 'down hole length, true width not known'). 	<ul style="list-style-type: none"> The dip of the gold mineralisation zone is inferred approximately 70° to the west. Geological interpretation of assay results indicates they are close to true width.
Diagrams	<ul style="list-style-type: none"> Appropriate maps and sections (with scales) and tabulations of intercepts should be included for any significant discovery being reported. These should include, but not be limited to, a plan view of drill hole collar locations and appropriate sectional views. 	<ul style="list-style-type: none"> Figure 1 – Western Queen Central and Princess gram x metre contours with selected drill hole intersections - longitudinal section Figure 2 - Location Plan of the Western Queen Gold Project Figure 3 - Western Queen Shear Zone Prospectivity over TMI Airborne Magnetics
Balanced reporting	<ul style="list-style-type: none"> Where comprehensive reporting of all Exploration Results is not practicable, representative reporting of both low and high grades and/or widths should be practiced to avoid misleading reporting of Exploration Results. 	<ul style="list-style-type: none"> Table 1 - Drill Hole Location, Survey, and Gold Assay Results
Other substantive exploration data	<ul style="list-style-type: none"> Other exploration data, if meaningful and material, should be reported including (but not limited to): geological observations; geophysical survey results; geochemical survey results; bulk samples – size and method of treatment; metallurgical test results; bulk density, groundwater, geotechnical and rock characteristics; potential deleterious or contaminating substances. 	<ul style="list-style-type: none"> All diamond samples collected for assay were concurrently assayed by pXRF.
Further work	<ul style="list-style-type: none"> The nature and scale of planned further work (e.g. tests for lateral extensions or depth extensions or large-scale step-out drilling). Diagrams clearly highlighting the areas of possible extensions, including the main geological interpretations and future drilling areas, provided this information is not commercially sensitive. 	<ul style="list-style-type: none"> Ongoing geological interpretation Updating the Mineral Resource Estimates (MRE) for gold and tungsten. Metallurgical test work on scheelite and gold. Planning of further infill and extension drilling programs based on final geological interpretation.