

## Macro appointed exclusive provider of mining services across East Pilbara by smelting company, Metal Logic

### Highlights

- ▶ Macro Mining Services Pty Ltd executes umbrella agreement with Metal Logic's wholly owned subsidiary ROM (OpCo) Pty Ltd to become the exclusive provider of mining services across an extensive East Pilbara land holding
- ▶ Metal Logic is an Australian company that has developed proprietary modular, scalable array smelting technology
- ▶ First work package awarded for site establishment, civil works and mining activities to support the first industrial scale deployment of proprietary smelting technology

Macro Metals Limited (ASX:M4M) (**Macro** or the **Company**) is pleased to announce that its wholly owned subsidiary, Macro Mining Services Pty Ltd (**Macro Mining Services**), has executed an umbrella mining services agreement (**Agreement**) with Metal Logic's wholly owned subsidiary, ROM (OpCo) Pty Ltd (**ROM (OpCo)**).

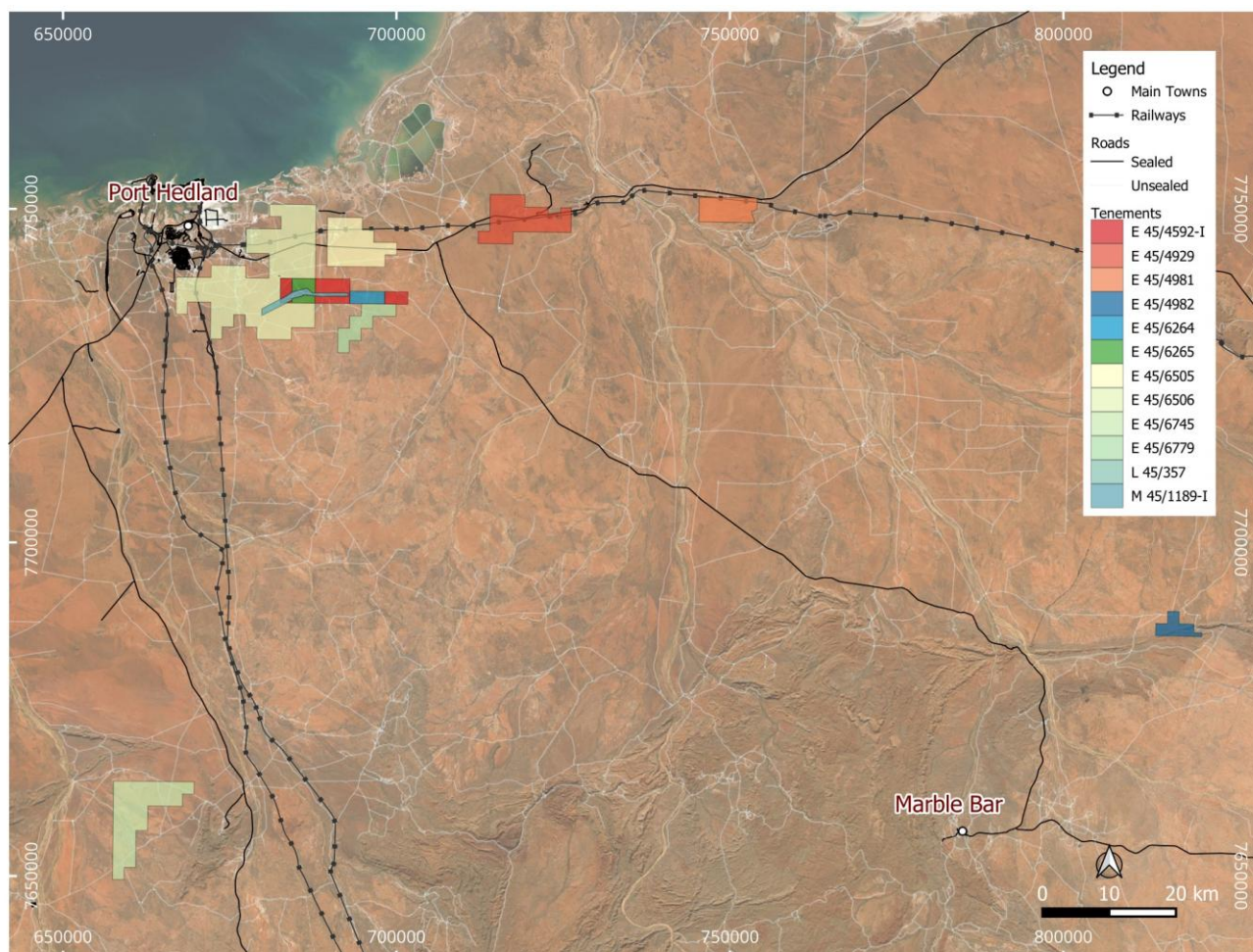


Figure 1 - Map showing ROM(OpCo)'s Pilbara tenure

ROM (OpCo) recently acquired an extensive land holding comprising both granted mining and exploration leases with established iron ore mineralisation deposits across the East Pilbara (**ROM (OpCo) Tenure**).

Under the Agreement, Macro Mining Services is appointed the exclusive provider of mining services across the ROM (OpCo) Tenure including all exploration, permitting and approvals, site establishment, mining and smelter feeding activities for a minimum period of 36 months.

ROM (OpCo)'s parent company, Metal Logic, is an Australian technology company that has developed proprietary modular, scalable array smelting technology that delivers a dramatic improvement in thermal efficiency typically associated with smelting plants. This improvement enables a significantly smaller smelting footprint via a modular, scalable approach whilst significantly reducing both capital intensity and operational costs of producing steel.

Metal Logic's modular smelter structures are erected from shipping-container-sized modules, facilitating significantly reduced costs and times to deploy the smelter to a site. The reduced footprint disturbance facilitates reduced time and cost to complete rehabilitation once the site's iron ore resources have been extracted and processed.

Macro Mining Services has committed to issuing suitable subcontract packages to its majority Indigenous-owned subsidiaries, Nyapiri Macro Mining Pty Ltd when working on Kariyarra and Ngarla country, and Nyamal Macro Mining Services Pty Ltd when working on Nyamal country, thereby ensuring traditional owner engagement with the rollout of this industry changing technology into Western Australia.

Managing Director of Metal Logic, Joel Nichols, commented:

*“To be able to deliver this Australian invented technology – achieving lower cost steel, and a low emission steel proximate to Port Hedland whilst working with Macro Mining Services and the local traditional owners of Country, is an achievement we are proud to be a part of.*

*We aim to unlock previously stranded mineral resources and deliver value-added processing hubs to regions, with the first deployment of our value-added hubs co-located alongside one of the world's largest mining hubs.*

*We will manufacture 48 of our 40-foot smelter modules at our Melbourne manufacturing and research facility, deploying a total of 1Mtpa of initial capacity to our first Port Hedland site.*

*We are genuinely excited with the iron ore tenements that we have secured and are looking forward to working with Macro Mining Services to demonstrate our technology on an industrial scale at the first of our sites across the Pilbara.”*

Macro's Managing Director, Simon Rushton, said:

*“We are extremely pleased to have been appointed the exclusive mining services contractor for Metal Logic on its considerable portfolio of mining tenure across the East Pilbara. The services we will provide will leverage Macro Mining Services' practical strengths in safely undertaking civil earthworks, mine site establishment and fit-for-purpose mining services.*

*We are also delighted that these works will create further employment opportunities in Western Australia, including for local traditional owner businesses and people, and position Macro Mining Services to contribute to a series of future projects that can be of genuine significance for the State's manufacturing sector.*

*Projects of this nature have the potential to support regional economic activity while also advancing much needed broader industrial development and downstream processing within Western Australia.”*

## First Work Package

The first work package that has been issued under the Agreement requires Macro Mining Services to mobilise its personnel and heavy mining equipment to undertake site establishment activities, civil earthworks and materials handling services at the Poondano Mine site located approximately 30 kilometres east of Port Hedland.

Key components of the first work package include:

- Planning and pre-mobilisation activities, including site access, programme planning and risk assessment.
- Site establishment, including mobilisation of earthmoving equipment and auxiliary support equipment.
- Access and internal road maintenance.
- Processing area drainage improvement, including clearing and levelling of the processing area.
- Winning run of mine iron ore and feeding it into the Metal Logic smelter plant.

Subject to final approvals, Macro Mining Services expects to commence the first works package in late June/early July 2026.

## Resourcing

To execute the first work package, Macro will mobilise a range of heavy mobile equipment, including excavators, dozer, motor grader, articulated dump trucks and front-end loaders, together with ancillary equipment such as water truck, service truck and light vehicles.

A skilled team comprising a Site Senior Executive, Schedule 26 supervision, and machine operators will execute the first works package in accordance with Macro's ISO certified safety, environmental and quality standards.

## Strategic Significance

The award of this exclusive mining services contract represents a material milestone for Macro as it:

- further demonstrates Macro Mining Services' capability across both civil and mining scopes.
- establishes the framework for future work packages to be issued for Macro Mining Services to perform exploration, technical services, mining, materials handling and rehabilitation across a large tenement holding in the Esat Pilbara.

This announcement has been authorised for release by the Board of Directors.

### For further information, please contact:

#### For Macro Metals Limited

##### **Simon Rushton**

*Managing Director*

Macro Metals Limited

**+61 8 6143 6707**

[info@macrometals.com.au](mailto:info@macrometals.com.au)

#### For Metal Logic

##### **Warrick Hazeldine**

*Media Relations*

Metal Logic

[media@metallogic.com](mailto:media@metallogic.com)

## About Metal Logic

Metal Logic operates research, development, laboratory, smelter development, and production facilities in Victoria, with offices in Perth and Melbourne.

With its newly secured site near Port Hedland in the Pilbara, the company is advancing the commercialisation of modular, scalable clean steel smelting technology that aims to provide steel at a lower cost than traditional black carbon methods.

## About Macro Metals Limited

Macro Metals Limited is a mineral exploration, project development, mining and mining services company focused on the delivery of shareholder value through the economic development of natural resource assets and the provision of safe and fit-for-purpose mining services.

The Company directly owns a portfolio of iron ore, manganese and construction material assets which are undergoing active exploration programs, with the aim of providing future production opportunities.

Separately, through its wholly owned subsidiary, Macro Mining Services Pty Ltd, the Company offers bespoke, safe and highly value-accretive mining services across a range of commodity groups and through the entire pit-to-customer supply chain, including mining, crushing and screening, processing, haulage, ship loading and shipping services.