

**STRICKLAND**  
METALS LIMITED

# Growing Rogozna Into A Tier One **Gold** Project

Extraordinary General Meeting Corporate  
Presentation

April 2026

ASX Code: STK

# Disclaimer

The information contained in the Presentation (Information) is a summary only and should be read in conjunction with any oral briefing and all other documents provided to you by the Strickland Metals Limited (Company). The Information is current as at the date of its release and the Company does not undertake to provide any additional or updated information, whether as a result of new information, future events or results or otherwise.

The material in this presentation contains certain forecasts and forward-looking information, including regarding possible or assumed future performance or potential growth of the Company. Such information is not a guarantee of future performance and involves unknown risks and uncertainties, as well as other factors, many of which are beyond the control of the Company. Actual results and developments may differ materially from those expressed or implied by these forward-looking statements depending on a variety of factors.

No representation or warranty, expressed or implied, is made or given by or on behalf of the Company, any of the Company's directors, or any other person as to the accuracy or completeness or fairness of the information or opinions contained in this presentation and no responsibility or liability is accepted by any of them for such information or opinions or for any errors, omissions, misstatements, negligent or otherwise, or for any communication written or otherwise, contained or referred to in this presentation.

Accordingly, neither the Company nor any of the Company's directors, officers, employees, advisers, associated persons or subsidiary undertakings shall be liable for any direct, indirect or consequential loss or damage suffered by any person as a result of relying upon the statement or as a result of any admission in, or any document supplied with, this presentation or by any future communications in connection with such documents and any such liabilities are expressly disclaimed.

Nothing in this material should be construed as either an offer to sell or a solicitation of an offer to buy or sell securities.

Recipients should conduct their own investigations and perform their own analysis in order to satisfy themselves as to the accuracy and the completeness of the information, statements and opinions contained.

By receiving the Presentation, you acknowledge and represent to the Company that you have read, understood and accepted the terms of this disclaimer. This Presentation is not a prospectus, product disclosure statement or other offering document under Australian law or any other law (and will not be lodged with the Australian Securities and Investments Commission (ASIC) or any other foreign regulator) and is not, and does not constitute, an invitation or offer of securities for subscription, purchase or sale in any jurisdiction. In particular, this Presentation does not constitute an invitation or offer of securities for subscription, purchase or sale in the United States or any other jurisdiction in which such an offer would be illegal. The securities referred to in this Presentation have not been, and will not be, registered under the US Securities Act of 1933 as amended or the securities laws of any state or other jurisdiction of the United States and may not be offered or sold, directly or indirectly in the United States.

The presentation has been authorised for release by the Managing Director of the Company.

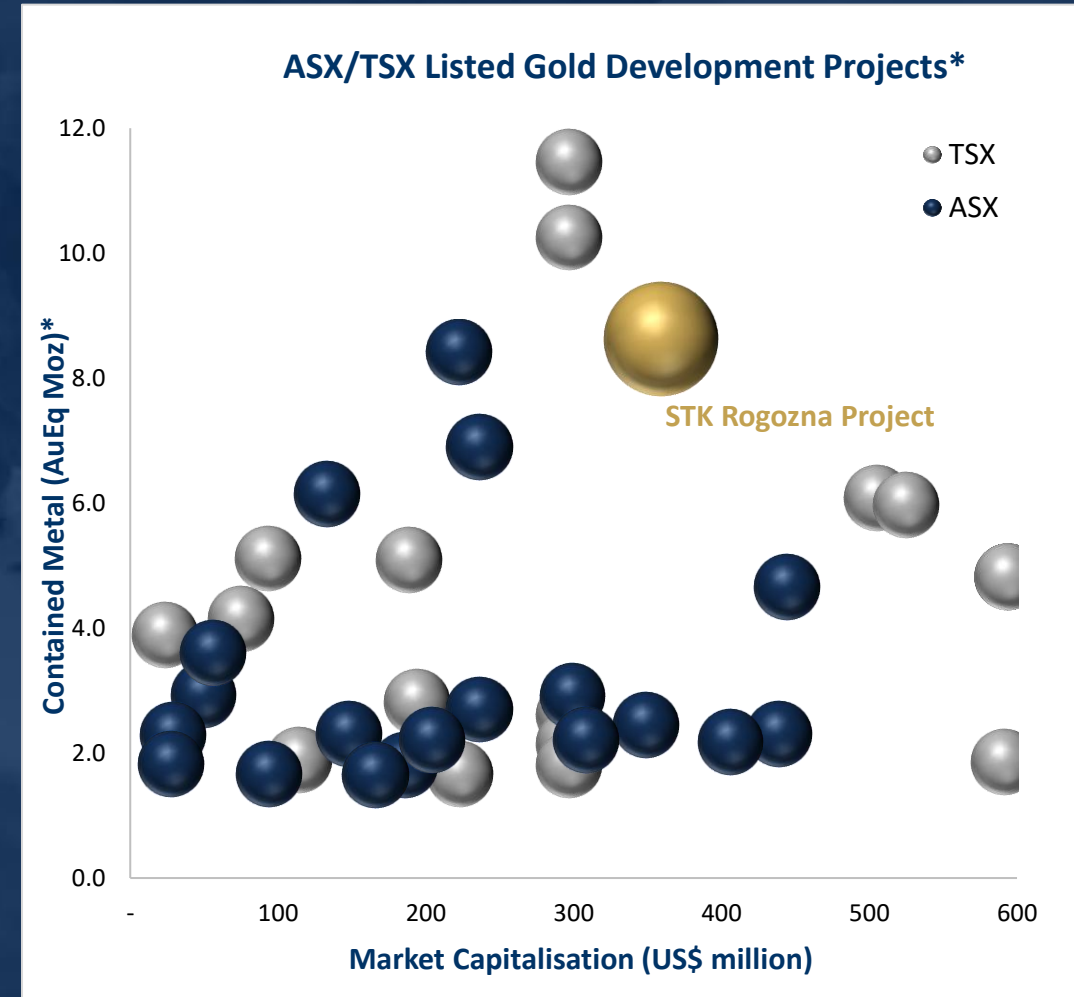
# Strickland Metals – A Rare Opportunity

**Rogozna Project JORC Inferred Resources of 8.6Moz AuEq<sup>1</sup> :**  
 one of the largest resource bases among ASX-listed gold explorers and growing.

**Zijin Mining as strategic investor:**  
 World’s 3<sup>rd</sup> largest mining company and largest company operating in Serbia – validates Rogozna as Tier One asset.

**Visible Low-Cost Growth Runway:**  
 Clear opportunities for high value resource growth within multi-deposit system and significant potential from new discoveries.

**Fully Funded to PFS completion:**  
 Targeting PFS completion in mid-2027 and fully funded with oversubscribed \$55 million placement<sup>2</sup>. Institutional demand highlights growing recognition of Rogozna and The Balkan region.



1. Refer to Appendix 1 for further details.  
 2. Refer to ASX Announcement dated 4 February 2026

Source: S&P Global  
 \*Refer to Appendix 2,3,4 and 5 for further source details regarding peer comparisons.  
 Market capitalisation as of 20 April 2026. Based on 0.65 AUD:USD.

# Corporate Summary

## Capital Structure (as of 20 April 2026 unless otherwise stated)

Shares on issue	2,634,468,767
Performance rights (20c, 30c, 50c) <sup>1</sup>	68,700,000
Options (13.5c)	50,000,000
Share Price	A\$0.21
Market Capitalisation (Undiluted)	A\$553M (US\$359M)
Cash	A\$68.2M (US\$48.3M) <sup>2</sup>
Listed shares <small>(as of 31 Dec 2025)</small>	A\$21.6M (US\$15.3M) <sup>2</sup>
<b>Top 20</b>	<b>57.3%</b>
<b>Board and Management</b>	<b>3.3%</b>

## Significant Shareholders

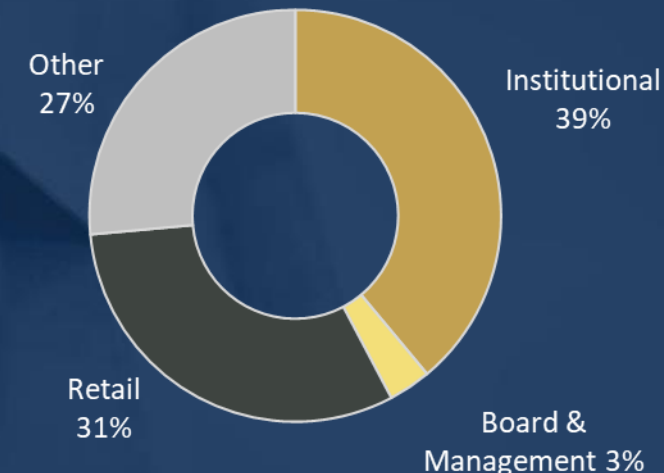
ARA V Fund <sup>3</sup>	8.3%
Ibaera Capital Fund 1 <sup>3</sup>	8.3%
Zijin Mining	5.6%
Jupiter Asset Management	4.1%
L11 Capital Pty Ltd	3.5%

1. Vesting condition relating to 10,000,000 Performance Rights has been satisfied, being that the Company achieves a 10 day VWAP of at least \$0.20. These performance rights can now be converted into fully paid ordinary shares in the Company at the election of the holders at any time prior to their expiry date of 26 August 2027.

2. Includes cash at 31 December 2025 and proceeds of approximately A\$51.9m received after costs following A\$55m equity raise completed on 11 February 2026. Based on 0.65 AUD:USD.

3. Shares via holding entity ISIH Ltd.

## ASX trading (ASX: STK)



# Experienced Team Positioned for Next Stage of Growth



**Anthony McClure**  
Non-Executive Chair

Anthony is a mining executive with over 30 years technical, management and financial experience. Former director of Silver Mines and Bolnisi Gold.



**Paul L'Herpinere**  
Managing Director

Former Fortescue Head of Exploration and extensive global project generation experience. A founding partner of Ibaera Capital, a resource-focused private equity firm.



**Dr Jon Hronsky, OAM**  
Non-Executive Director

Jon brings over 40 years of extensive exploration experience in gold, copper and nickel. Former Global Manager of Strategy and Generative Sciences at BHP.



**Trent Franklin**  
Non-Executive Director

Trent is MD of Enrizen Financial Group and has served on the board of a number of ASX listed explorers.



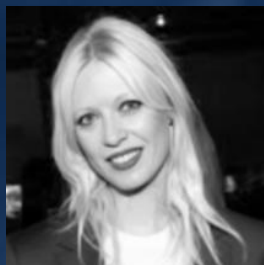
**Richard Pugh**  
Non-Executive Director

Richard is a geologist with over 18 years experience, holding senior consulting and geology management positions. Richard is CEO of Gateway Mining.



**Sleiman Majdoub**  
Company Secretary

A solicitor with significant experience in advising ASX listed mining exploration companies with reporting and compliance requirements.



**Anđelija Vujović**  
Country Director

Serbian National with 20 years experience in public relations, marketing and consulting. Held senior role with Adriatic Metals Serbia.



**Dr Milorad Antic**  
Exploration Manager

Milorad has substantial experience conducting exploration and research within the Western Tethyan Belt, including 8 years at the Rogozna Project.



**Mark Mantle**  
Mining Study Manager

Mark has 30 years experience with Newmont, Ausenco, Minproc Engineers delivering mining project studies, development and construction globally.



**Ben Pearson**  
Environment and Permitting Manager

Extensive experience in environmental management and impact assessments for mining projects globally.

# Rogozna Overview



# Rogozna – In the Land of Giants

## Highly prospective geology

Western Tethyan Belt with multiple giant porphyry-related deposits.

## Major miners active in-country

Zijin, BHP and Dundee Precious Metals.

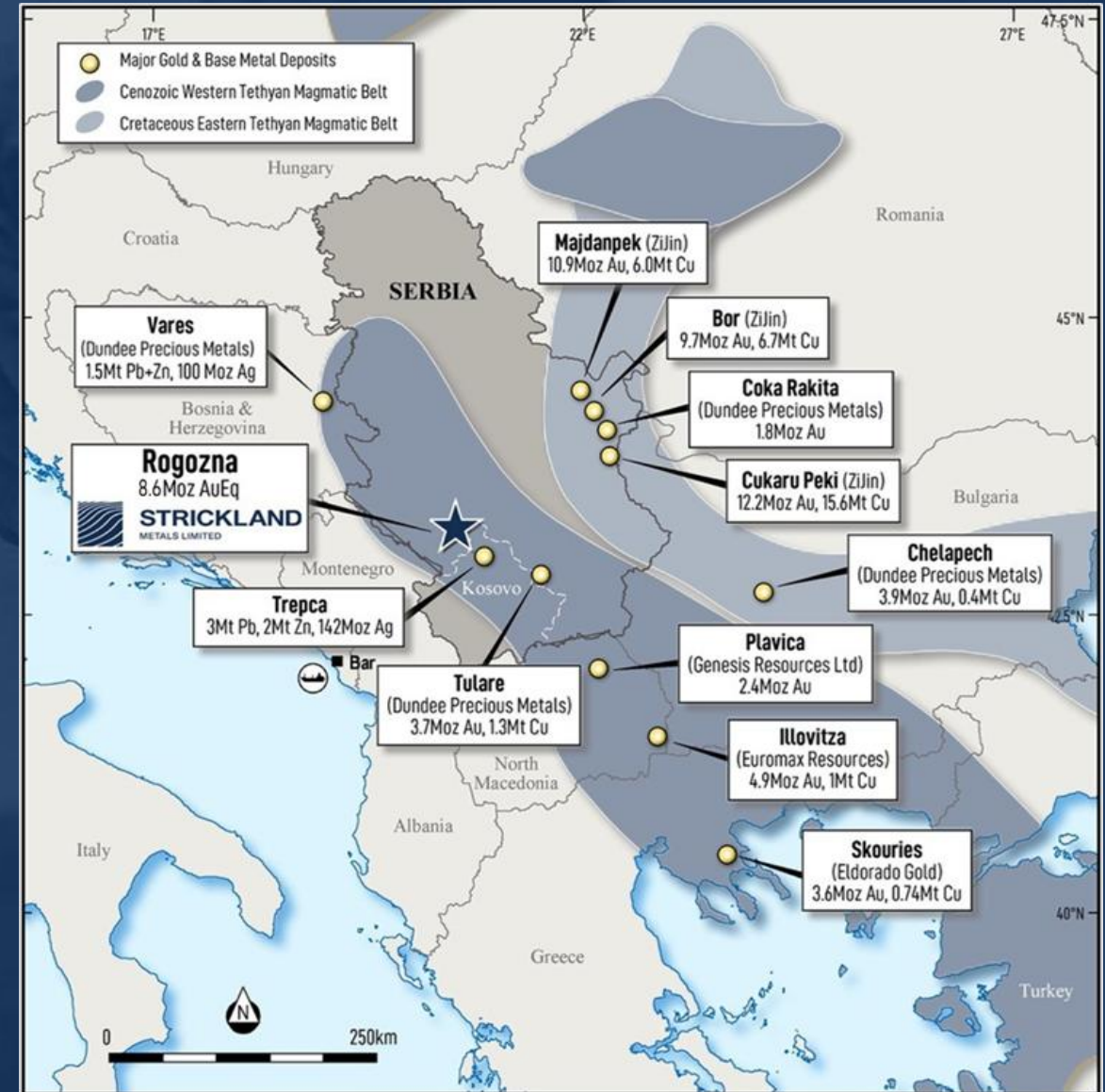
## Established Infrastructure

Access to extensive infrastructure network.

## Mining in Serbia

2.7% of GDP, strategy to increase contribution over the next decade.

Europe's 3<sup>rd</sup> largest copper producer.



# Rogozna Overview

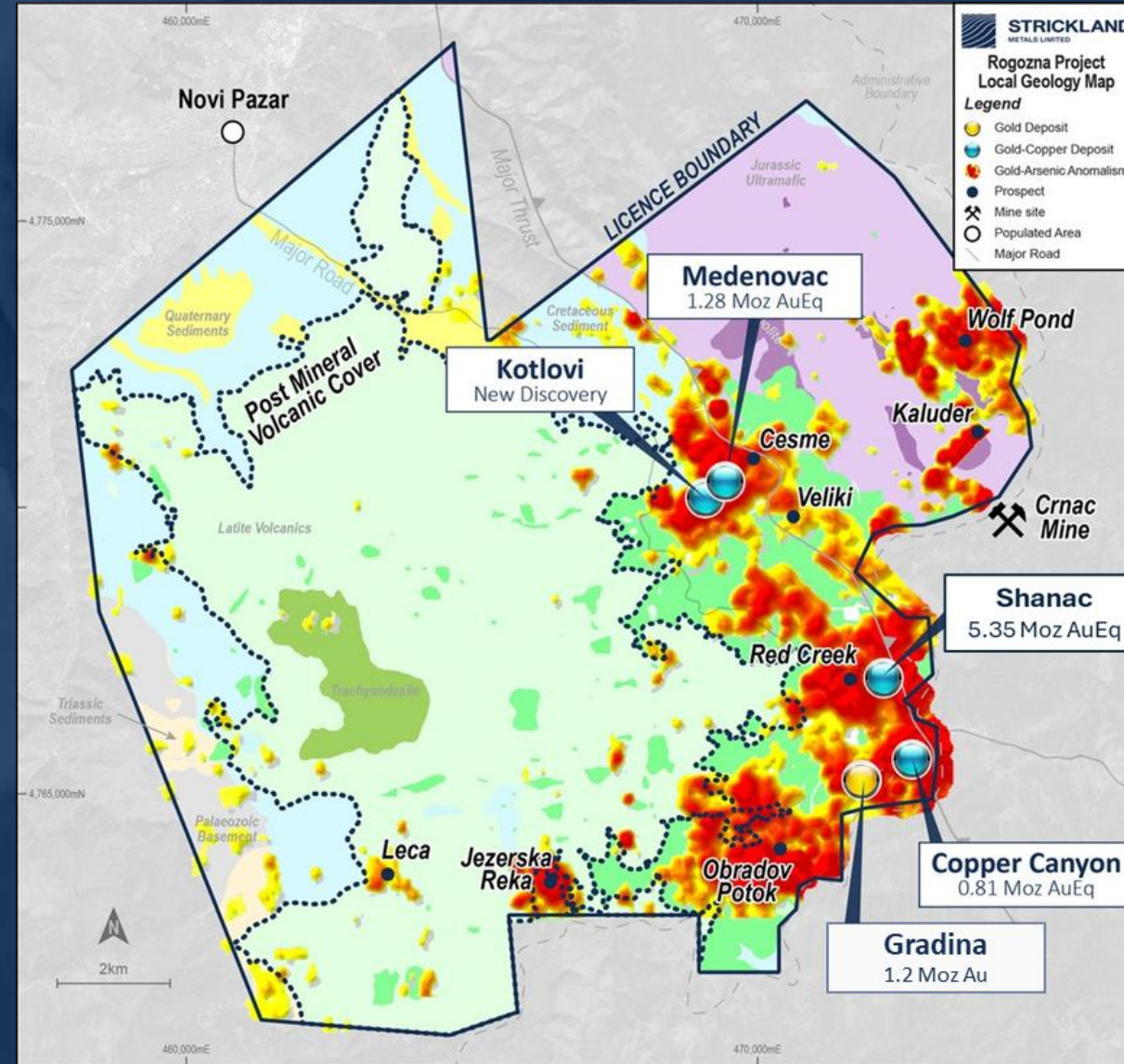
A massive magmatic mineral system covered by ~184 km<sup>2</sup> of tenure.

Located in the heart of one of Europe's largest historical base metal mining centres – Trepca Mineral District.

Four skarn-hosted gold + base metal deposits and extensive exploration pipeline with >20 targets defined by >160km of drilling.

**221Mt @ 1.2g/t AuEq for 8.6Moz AuEq JORC Resources<sup>1</sup>** for the four drill-defined deposits. Significant opportunity for further low-cost resource growth with extensive drill program.

Prospect	Tonnes (Mt)	AuEq (g/t)	Au (g/t)	Cu (%)	Ag (g/t)	Pb (%)	Zn (%)	AuEq (Moz)
Gradina	12	3.0	3.0	-	-	-	-	1.2
Medenovac	21	1.9	0.77	0.27	6.3	0.11	1.54	1.28
Shanac	160	1.0	0.60	0.11	6.3	0.23	0.34	5.35
Copper Canyon	28	0.9	0.40	0.30	-	-	-	0.81
<b>Total<sup>1</sup></b>	<b>221</b>	<b>1.2</b>	<b>0.72</b>	<b>0.15</b>	<b>5.2</b>	<b>0.17</b>	<b>0.40</b>	<b>8.60</b>



Rogozna Plan View Map with Geology, Geochemistry, Deposits and Prospects 8

1. Refer to Appendix 1 for further details.

# Rogozna Sustainability

## Zlatna Reka Resources - Strickland Metals' 100%-owned Serbian subsidiary

60 permanent employees = >100% increase over 12 months;

- 60% from local communities.
- 31% Female = >50% increase over 12 months.
- 20% of workforce focused on community, environment and cultural heritage.

Operational offices in Raska, Novi Pazar and Belgrade.

- >80% local procurement.

Increased commitment to the support of multiple community initiatives and sustainability projects.

Expanded environmental studies, monitoring and rehabilitation.

ESG Certified with BB rating.

**2026 Focus – Continual improvement of stakeholder engagement and environmental management, complete baseline studies for PFS.**



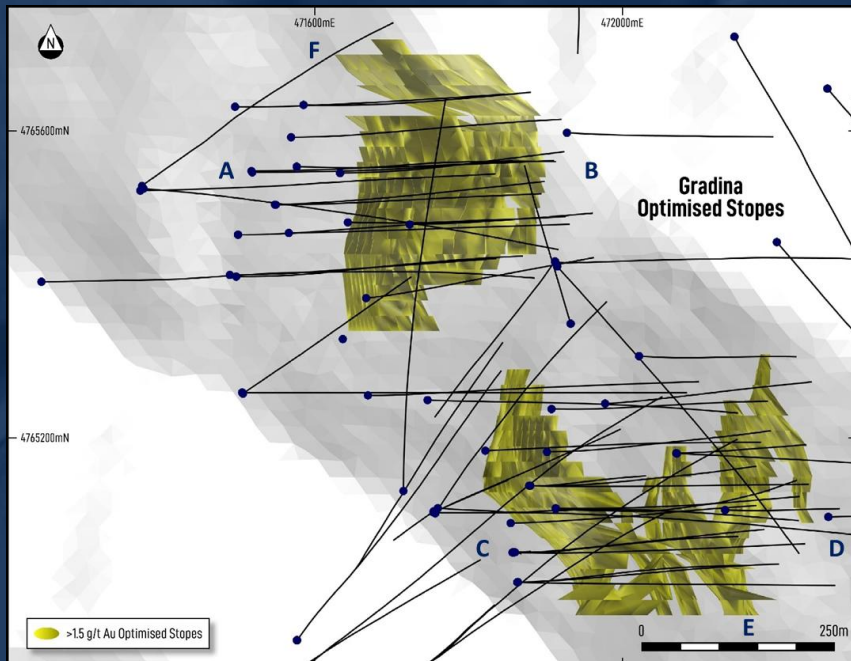
# Deposit Overview



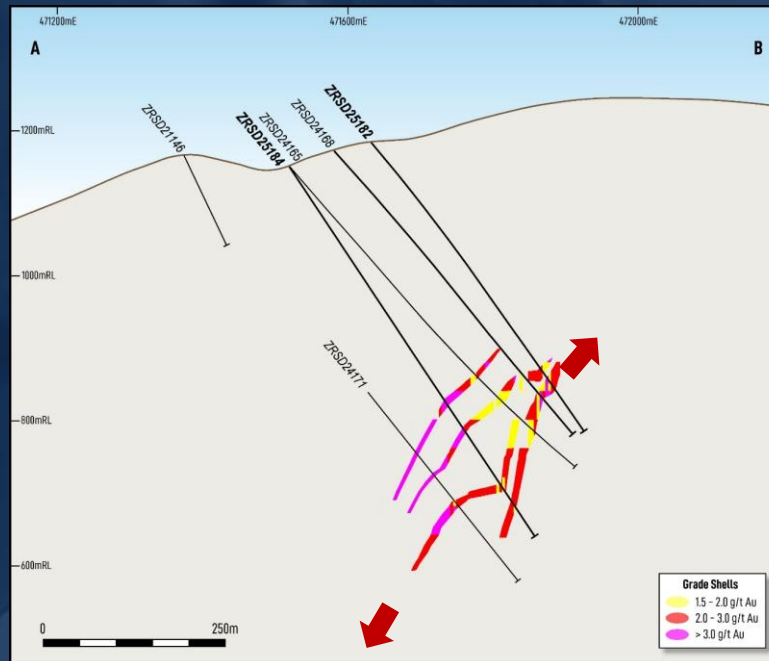
# Gradina Deposit – 1.2Moz High-Grade Gold System

## 12Mt @ 3.0g/t Au for 1.20Moz Au JORC 2012 Inferred Resources<sup>1</sup>

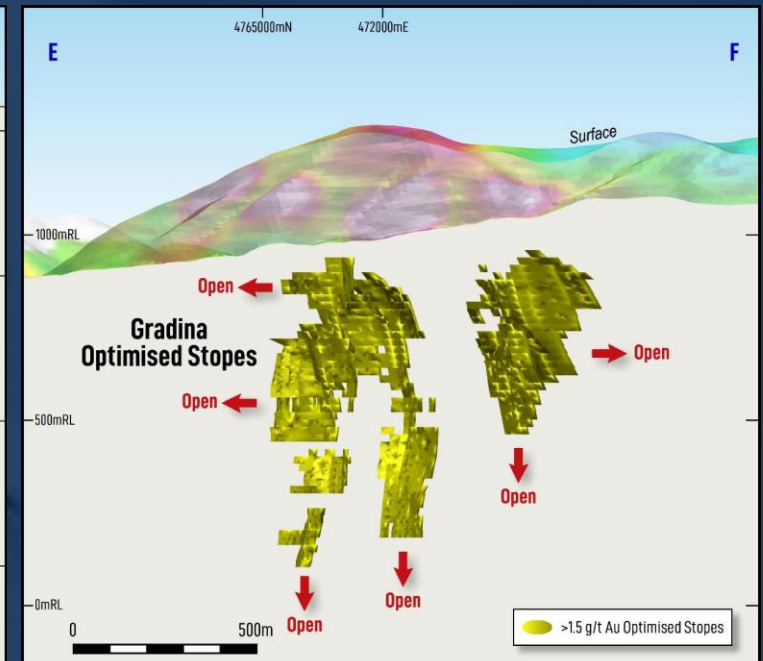
- The highest grade, most gold-dominant deposit at Rogozna.
- Resources constrained by Long Hole Open Stopping UG mining shapes @ \$2,500/oz gold price, >1.5g/t Au cut-off grade.
- High gold recoveries of ~90% achieved through standard industry flotation processes<sup>2</sup>.
- **2026 Focus – Grow resources at Gradina North, infill to target >1Moz Au Indicated Resources.**



Gradina Plan View



Gradina Cross Section



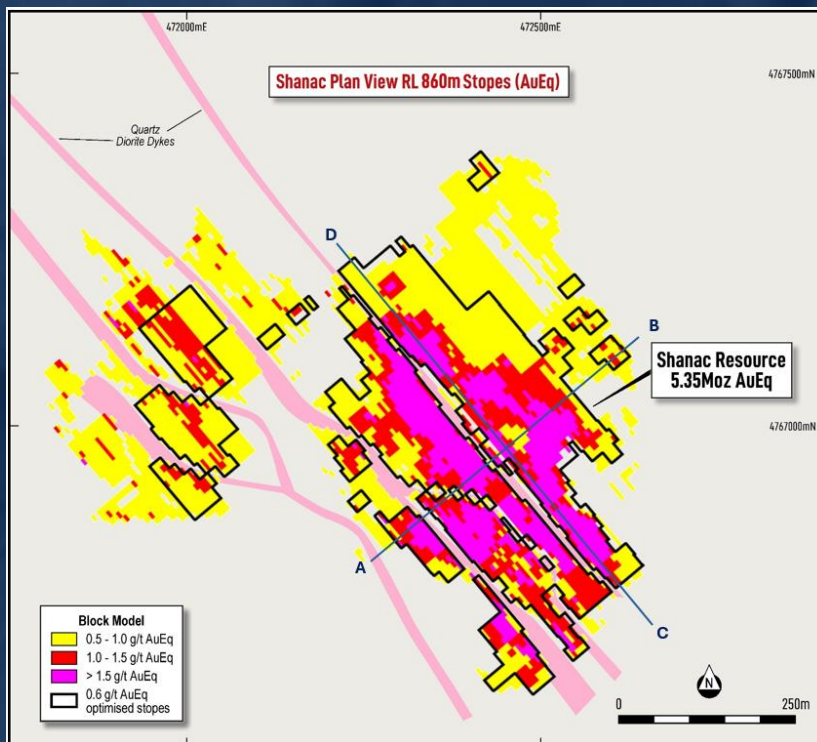
Gradina Long Section

1. Refer to Appendix 1 for further details.  
2. See ASX announcement dated 4 November 2024 and 28 July 2025.

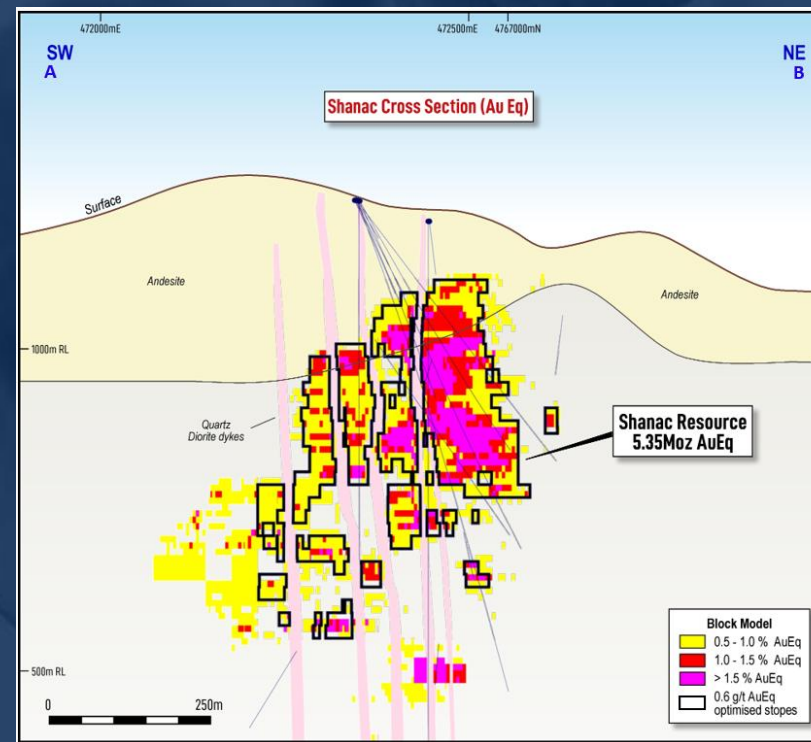
# Shanac Deposit – 5.35Moz AuEq and Growing

160Mt @ 1.04g/t AuEq for 5.35Moz AuEq JORC 2012 Resources<sup>1</sup> (@ US\$3,000/oz, >0.6g/t AuEq cut-off grade)

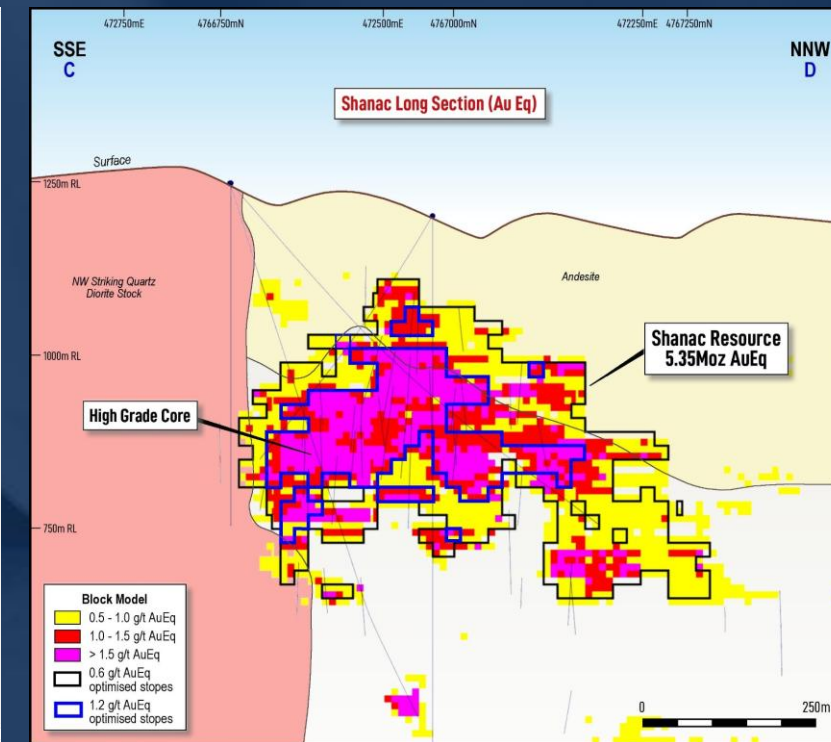
- Maiden Indicated Resource of 30Mt @1.3g/t AuEq for 1.25Moz AuEq.
- Includes 33Mt @ 1.6g/t AuEq for 1.74Moz AuEq (>1.2g/t AuEq cut-off grade).
- **2026 Focus – Increase Indicated Resources to >2Moz AuEq** through infill of western side of central domain.



Shanac plan view map



Shanac cross section view, looking north



Shanac long section view, looking west

1. Refer to Appendix 1 for further details.

# Red Creek – New Discovery 1km from 5.35Moz Shanac Deposit

High-grade gold and base metals discovery with significant upside potential.

Discovery hole (ZRSD25233) significant intercepts<sup>1</sup>:

- 4.0m @ 4.0g/t AuEq from 44.0m; and
- 53.0m @ 2.3g/t AuEq from 514.4m, incl.
- 35.0m @ 3.1g/t AuEq from 518.4m, incl.
- 15.0m @ 4.0g/t AuEq from 518.4m, and
- 16.7m @ 2.8g/t AuEq from 536.7m, and
- 13.3m @ 0.9g/t AuEq from 658.6m, and
- 4.0m @ 0.8g/t AuEq from 723.5m.



524.5 to 526.5m – 0.4g/t Au, 1.4% Cu, 0.2% Pb, 0.1% Zn and 15.5g/t Ag (3.3g/t AuEq<sup>2</sup>).



522.0 to 524.5m in ZRSD25233 – 2.8g/t Au, 3.7% Cu, 5.3% Pb, 1.5% Zn and 86.6g/t Ag (13.5g/t AuEq<sup>2</sup>).



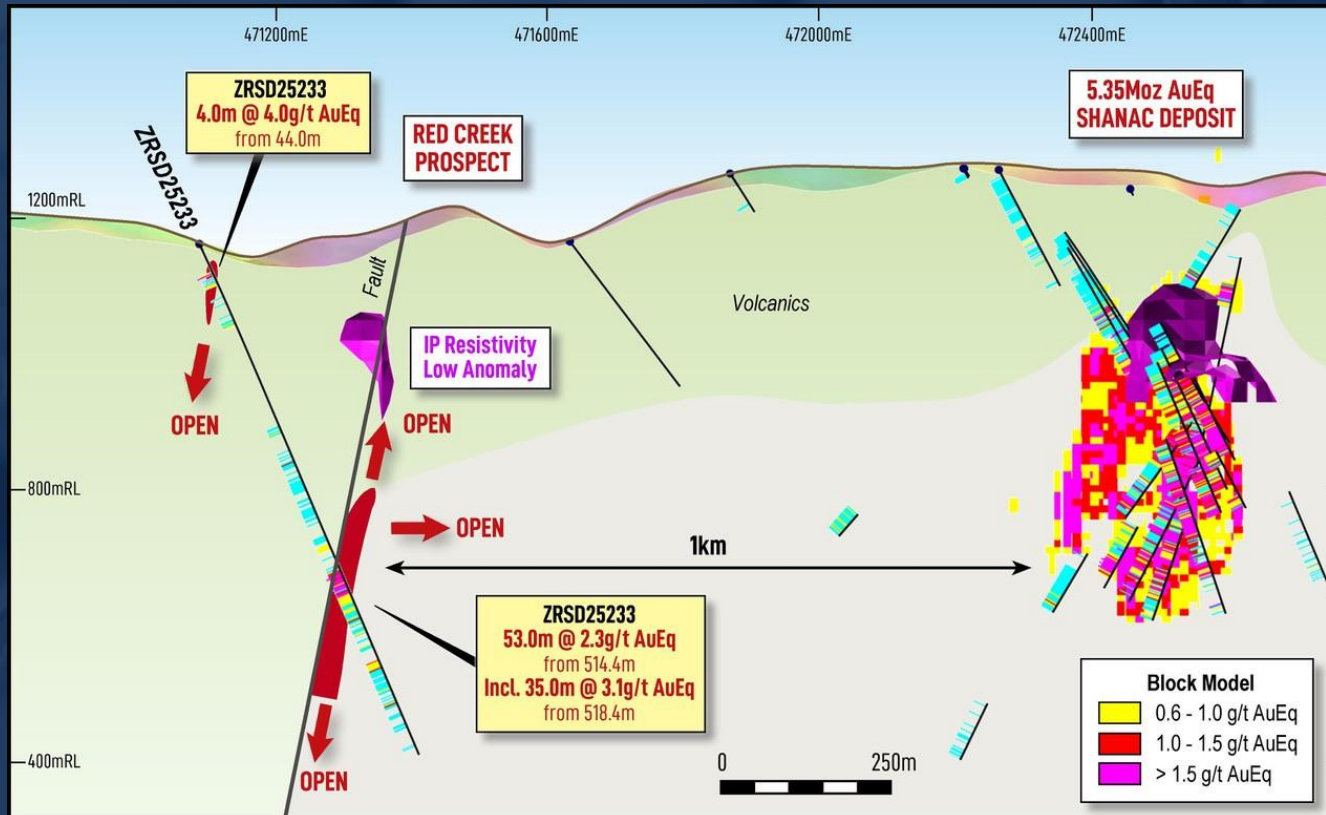
540.5 to 542.5m – 1.9g/t Au, 0.3% Cu, 1.1% Pb, 0.8% Zn and 17.3g/t Ag (3.6g/t AuEq<sup>2</sup>).



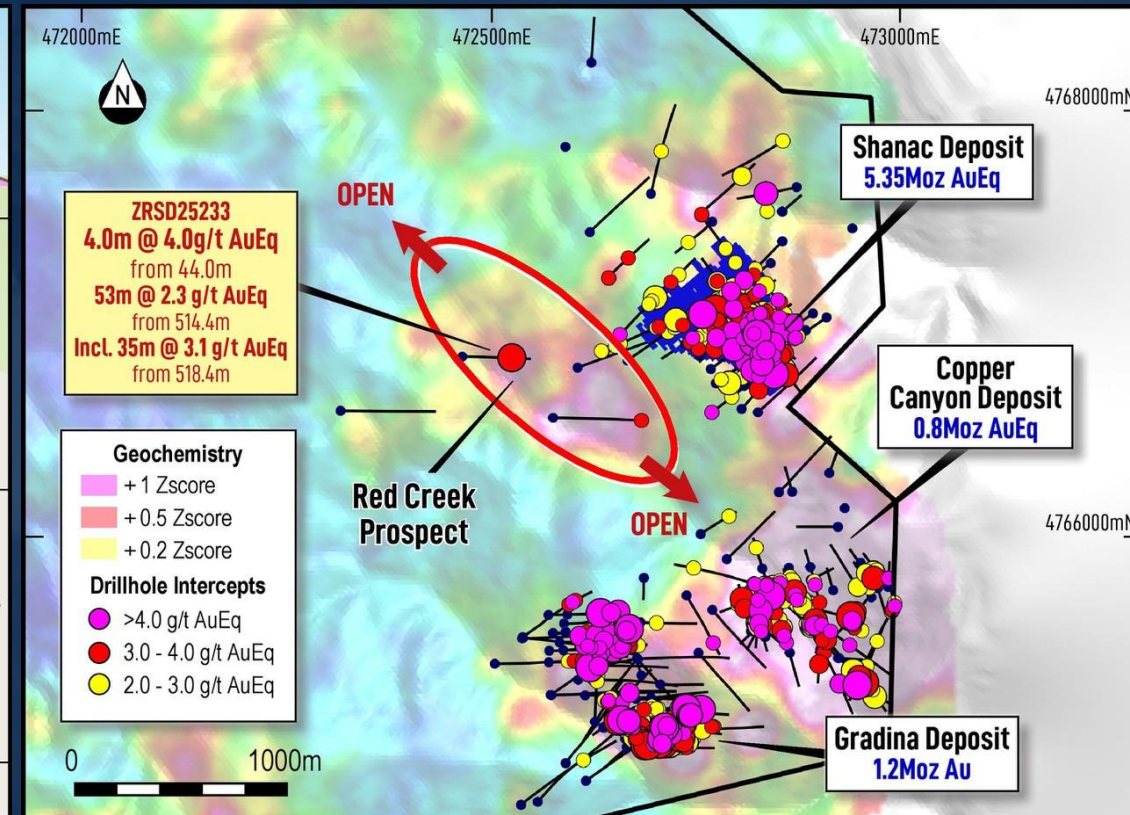
538.5 to 540.5m – 0.6g/t Au, 0.3% Cu, 1.1% Pb, 7.9% Zn and 13.6g/t Ag (6.0g/t AuEq<sup>2</sup>).

# Red Creek – Upside Potential

- A very large search space exists at Red Creek – with limited drilling for ~1.5km along strike to the SE, towards Copper Canyon and ~1km of open space laterally to the east towards Shanac.
- **2026 Focus – Followup drilling to scope out the potential size of the deposit.**



Red Creek to Shanac Cross Section view looking north, 80m view width.

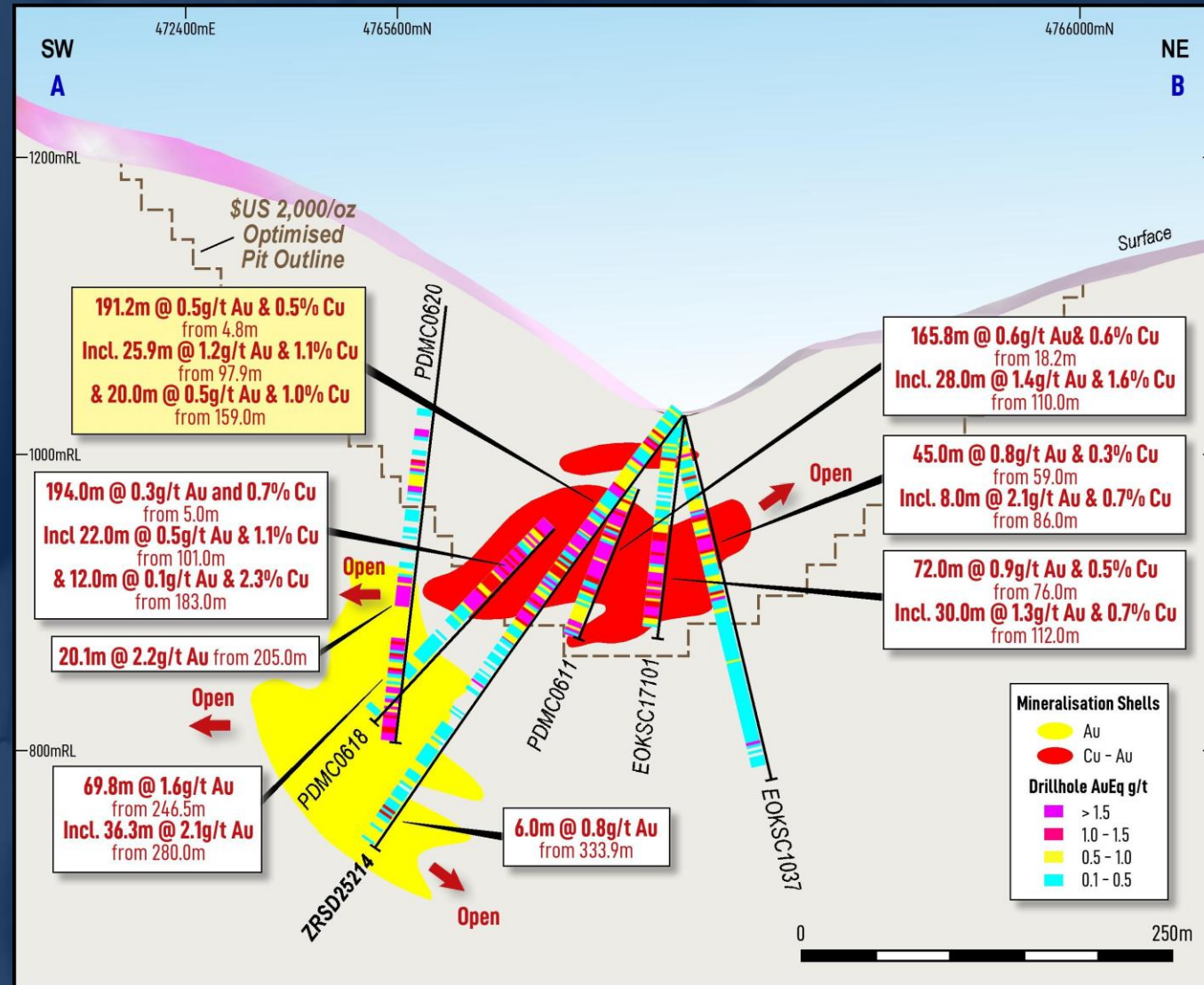


Red Creek, Shanac, Copper Canyon and Gradina Plan View Map.

# Copper Canyon Deposit – Outcropping Copper-Gold

## 28Mt @ 0.9g/t AuEq for 0.81Moz Au Eq JORC 2012 Inferred Resources<sup>1</sup>

- Resources constrained by open-pit shell @ US\$2,000/oz, 0.4g/t AuEq cut-off, 2.2:1 strip ratio.
- Upper zone of Cu-Au mineralisation up to 150m thick, 0.5g/t Au and 0.5% Cu.<sup>2</sup>
- Au-only mineralisation beneath the Cu-Au zone
  - 38.4m @ 3.7g/t Au from in EOKSC1680.<sup>3</sup>
- Mineralisation near surface and open in all directions.
- 2026 Focus – Infill drilling to convert to Indicated Resources.**



Copper Canyon cross section looking NW<sup>2</sup>

1. Refer to Appendix 1 for further details.  
 2. Refer to ASX announcement 8 October 2025.  
 3. Refer to ASX announcement 17 April 2024.

# Medenovac Deposit – Structurally Controlled High-Grade Core

## 21Mt @ 1.9g/t AuEq for 1.28Moz AuEq JORC 2012 Inferred Resources<sup>1</sup>.

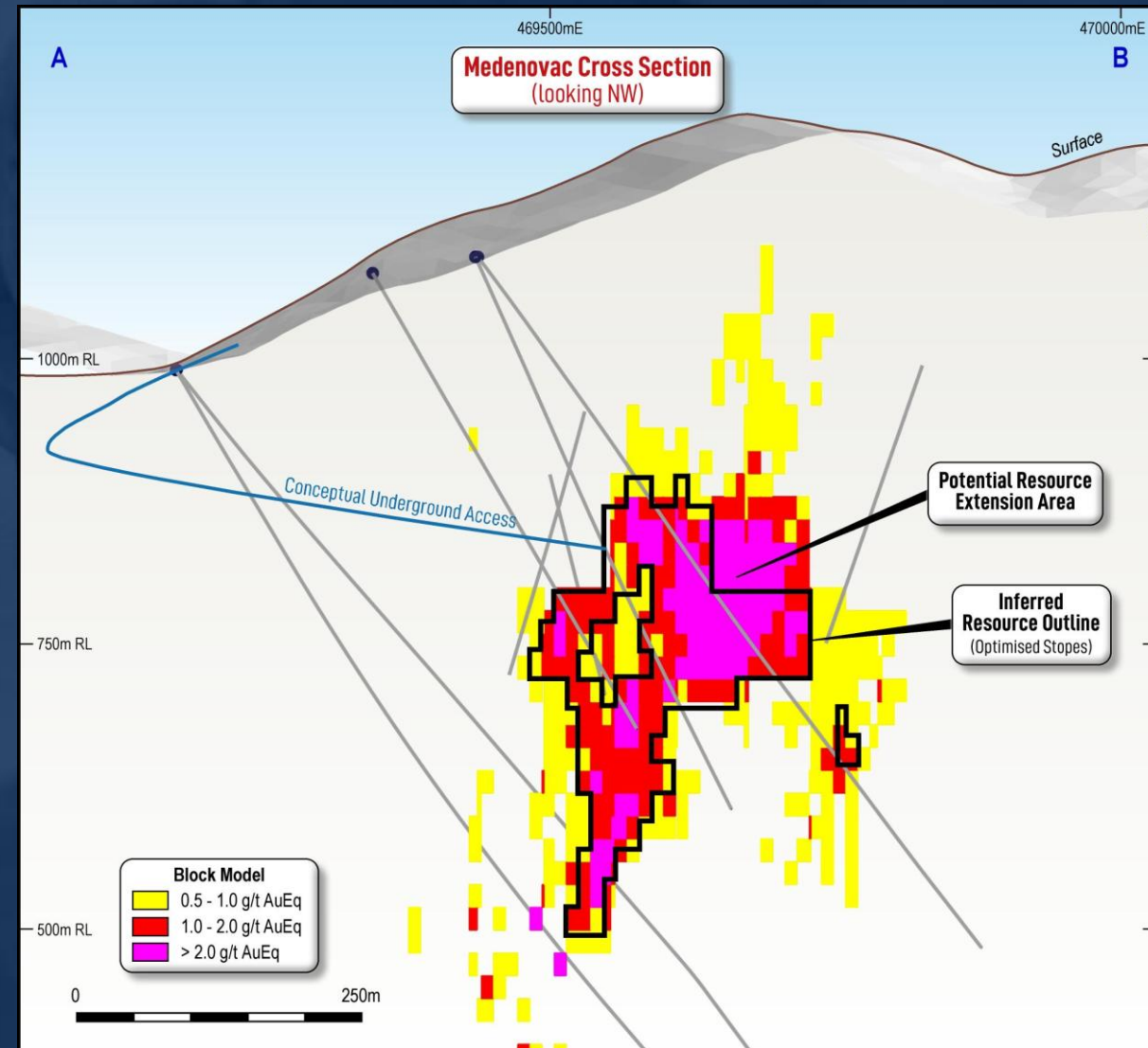
- 6,800 AuEq OPVM over 150m vertical extent.
- Resources constrained by Sub Level Cave UG mining shapes @ \$2,250/oz, >1.0g/t AuEq cut off grade.
- Mineralisation remains open to the north and at depth.

## Structurally-controlled high-grade core<sup>2</sup>:

- 97.7m @ 5.1g/t AuEq from 321.0m (ZRSD21136).
- 50.0m @ 5.6g/t AuEq from 271.5m (ZRSD24157).
- 43.4m @ 4.6g/t AuEq from 357.2m (ZRSD24159).

## New Kotlovi discovery just 350m to the west<sup>3</sup>:

- 277.3m @ 1.3g/t AuEq from 337.4m (ZRSD25189).
- 34.9m @ 2.2g/t Au from 324.2m (ZRSD25206).



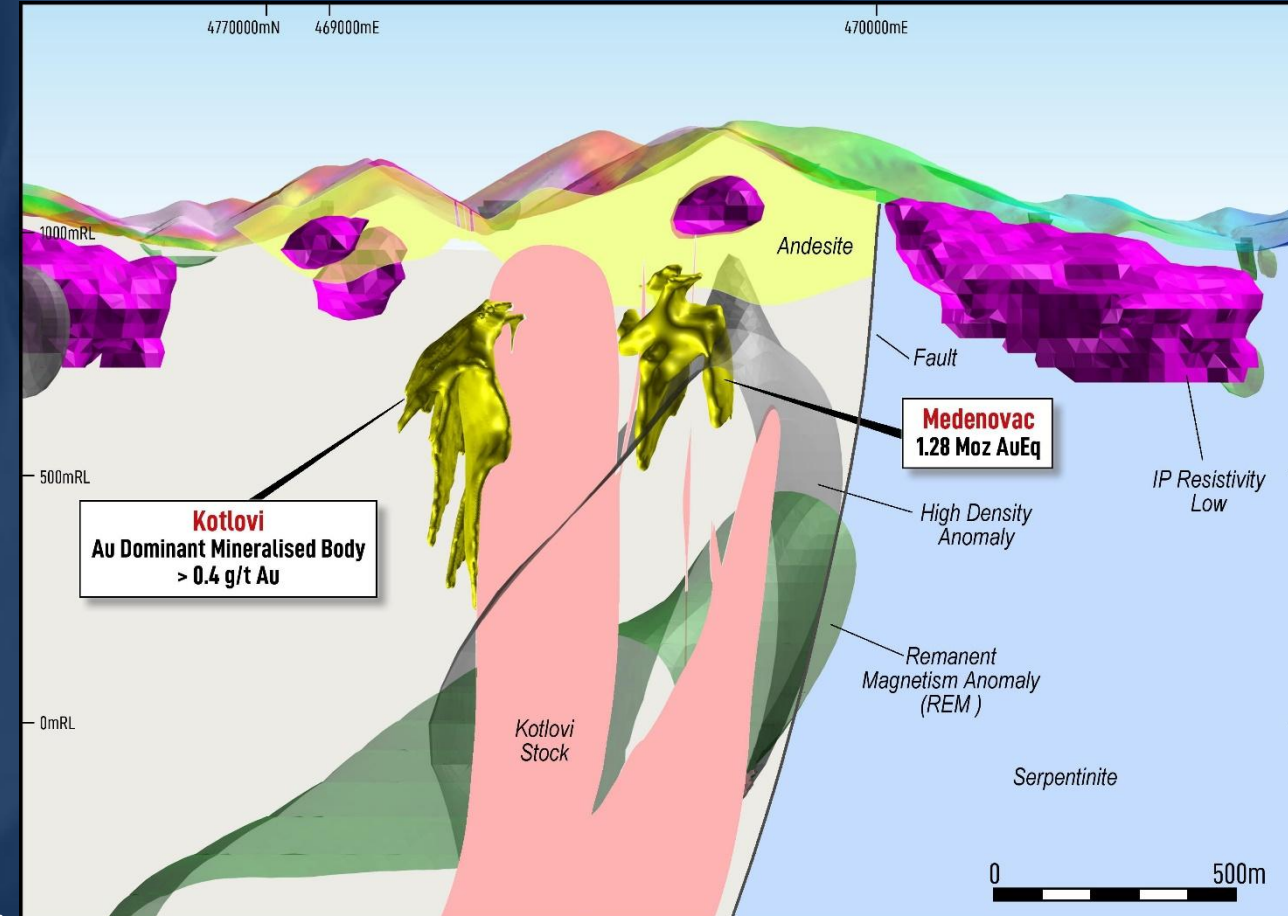
Medenovac cross section view looking north<sup>4</sup>

1. Refer to Appendix 1 for further details.  
2. Refer to ASX announcement 17 April 2024, 27 September 2024 and 31 October 2024.  
3. Refer to ASX announcement 6 August 2025 and 1 December 2025.  
4. Refer to ASX announcement 1 December 2025.

# Kotlovi – New Discovery with Growing Mineralisation Footprint

Significant new discovery with scale potential just 350m west of Medenovac.

- 277.3m @ 1.3g/t AuEq from 337.4m (ZRSD25189)<sup>1</sup>, incl.
- 163.0m @ 1.4g/t Au from 337.4m, incl.
- 33.5m @ 2.9g/t Au from 339.4m, and
- 2.0m @ 15.3g/t Au from 370.9m, and
- 15.1m @ 2.7g/t Au from 421.0m, and
- 12.0m @ 2.9g/t Au from 476.4m.
  
- 15.6m @ 2.0g/t AuEq from 391.5m (ZRSD24163)<sup>2</sup>, and
- 40.3m @ 2.6g/t Au from 558.1m, incl.
- 12.0m @ 5.7g/t Au from 584.4m.
  
- 17.0m @ 3.5g/t AuEq from 744.7m (ZRSD24158)<sup>2</sup>, incl.
- 11.0m @ 4.6g/t AuEq from 750.7m.



Medenovac to Kotlovi cross section view looking north<sup>4</sup>

1. Refer to ASX announcement 6 August 2025.  
2. Refer to ASX announcement 11 November 2024.

# Exploration Upside – An Extensive Portfolio of Targets

Skarn systems the scale of Rogozna often have a mineralised porphyry in proximity.

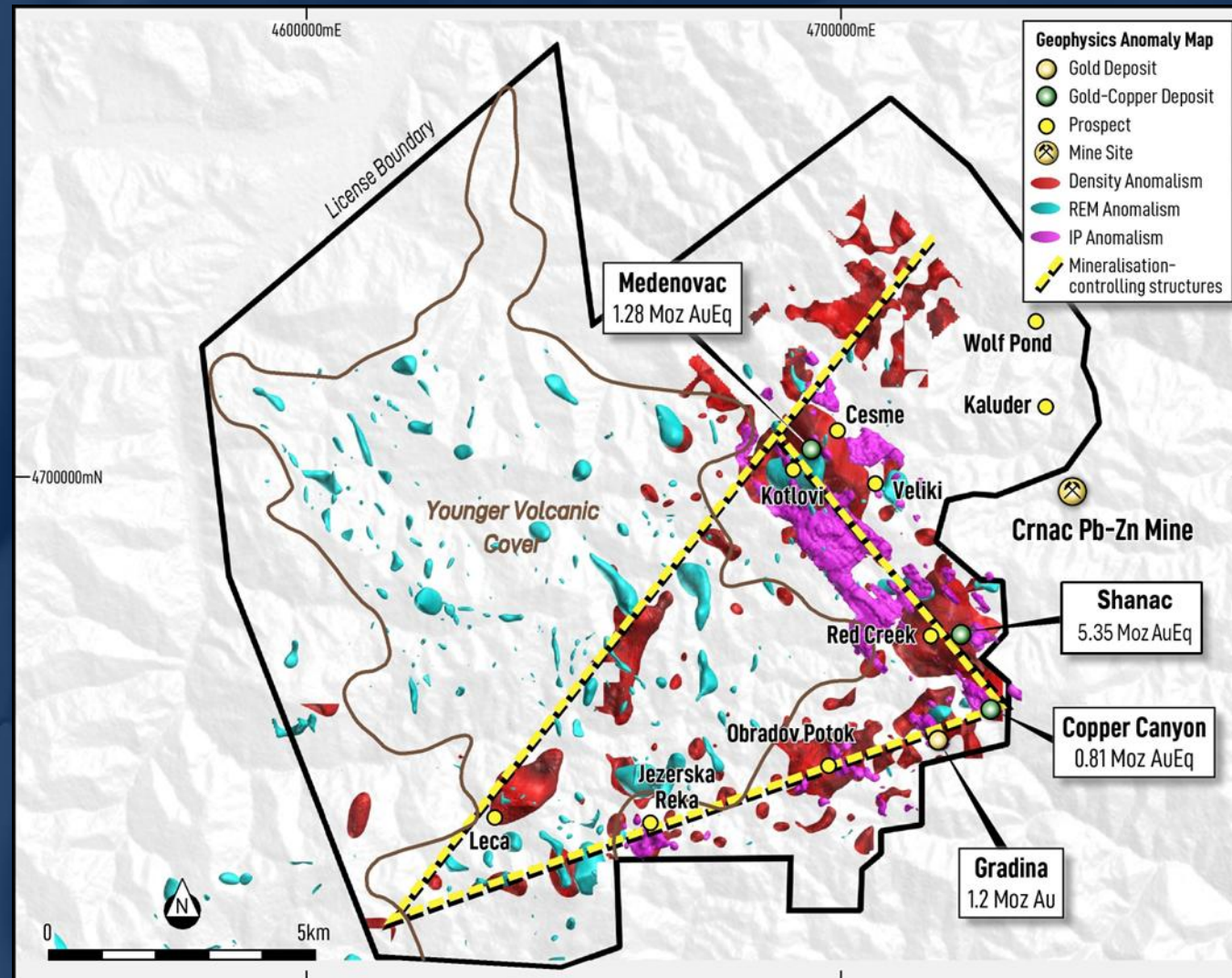
Porphyry-related alteration and mineralisation confirmed at Jezerska Reka<sup>1</sup>:

- 493.0m @ 0.1g/t Au from 223.6m (ZRJD24002).

Mineralisation-related structural framework developed in late CY25 with follow up discovery drilling planned in CY26.

Central Porphyry Target Area – covered by younger volcanics - ground geophysics generating multiple additional targets.<sup>2</sup>

2026 Focus – Generate and test additional porphyry and skarn targets.

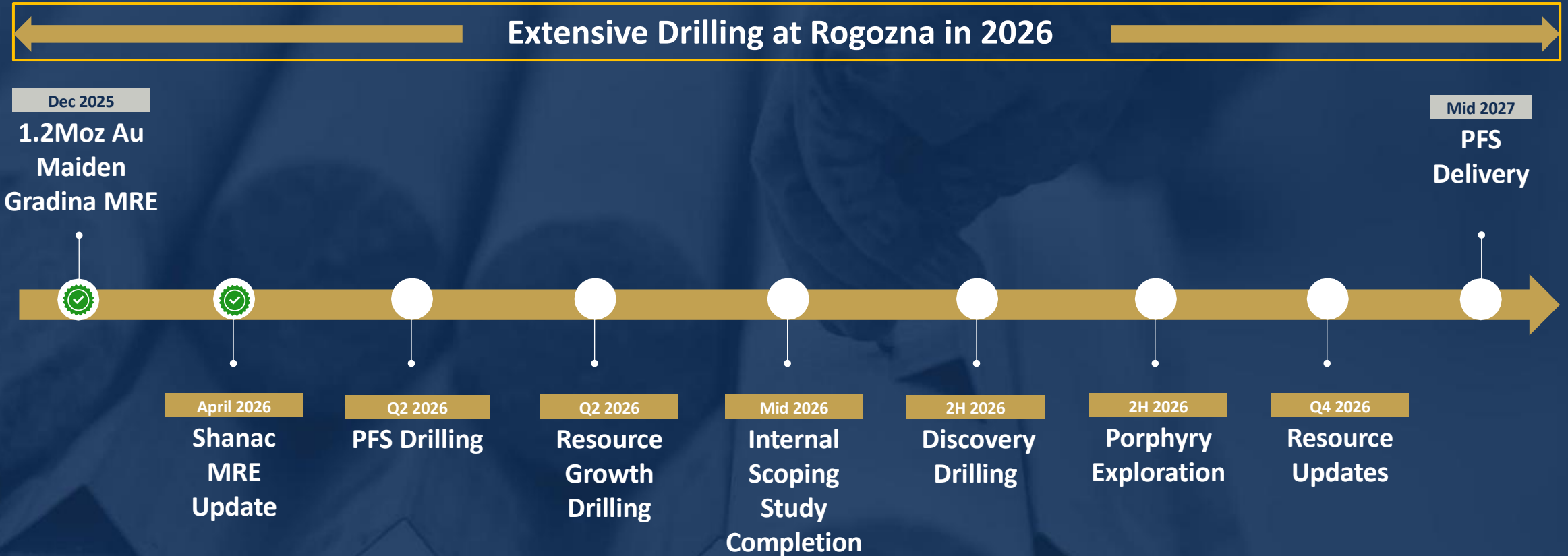


1. Refer to ASX announcement 4 March 2025.  
2. Refer to ASX announcements 14 July 2025 and 9 October 2025.

# Project Development



# Key Deliverables for 2026/27



**Advancing high value resource growth and discovery opportunities**  
**Progressing drilling, project and mining studies in parallel for PFS completion in mid-2027**

# Strickland Metals - Primed for Growth

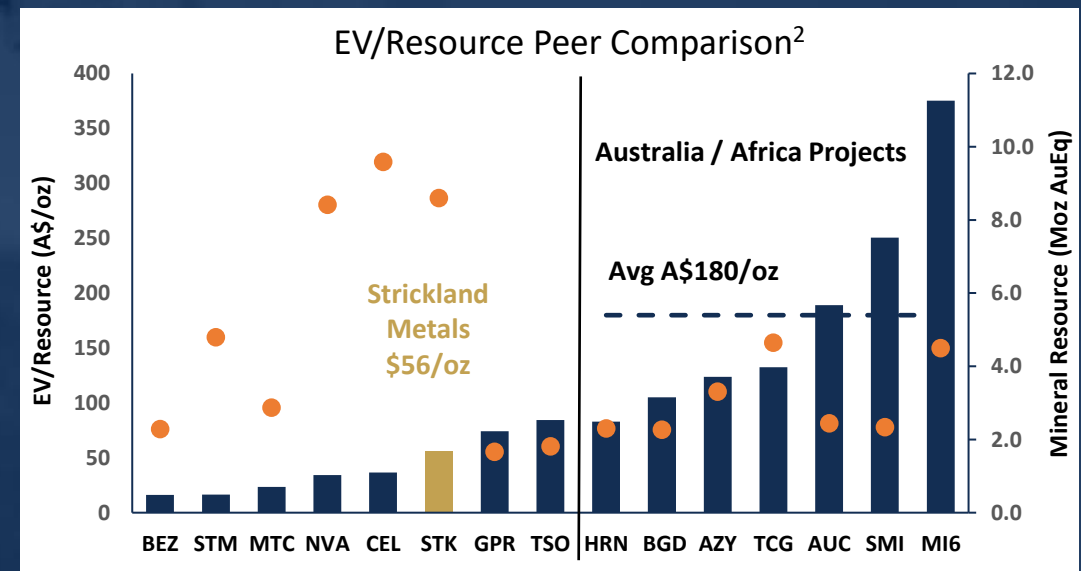
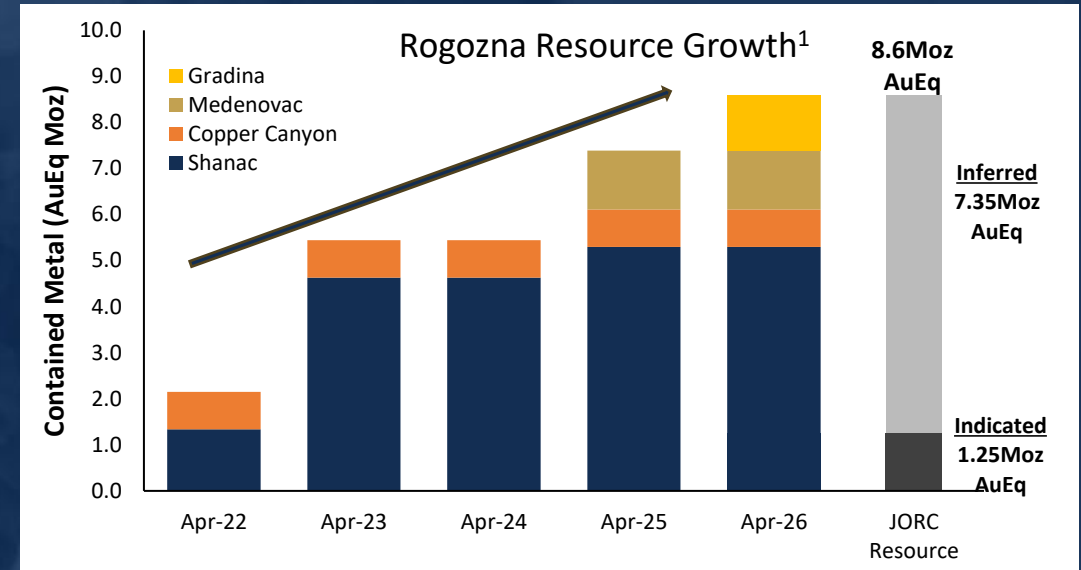
**Significant Scale** 8.6Moz AuEq<sup>1</sup> Rogozna Project in Serbia.

**Clear Focus and exceptional leverage** to further discoveries, resource growth in the favourable gold price environment.

**Extensive drilling program planned for 2026** to support PFS studies and target value accretive growth opportunities across the Rogozna Project.

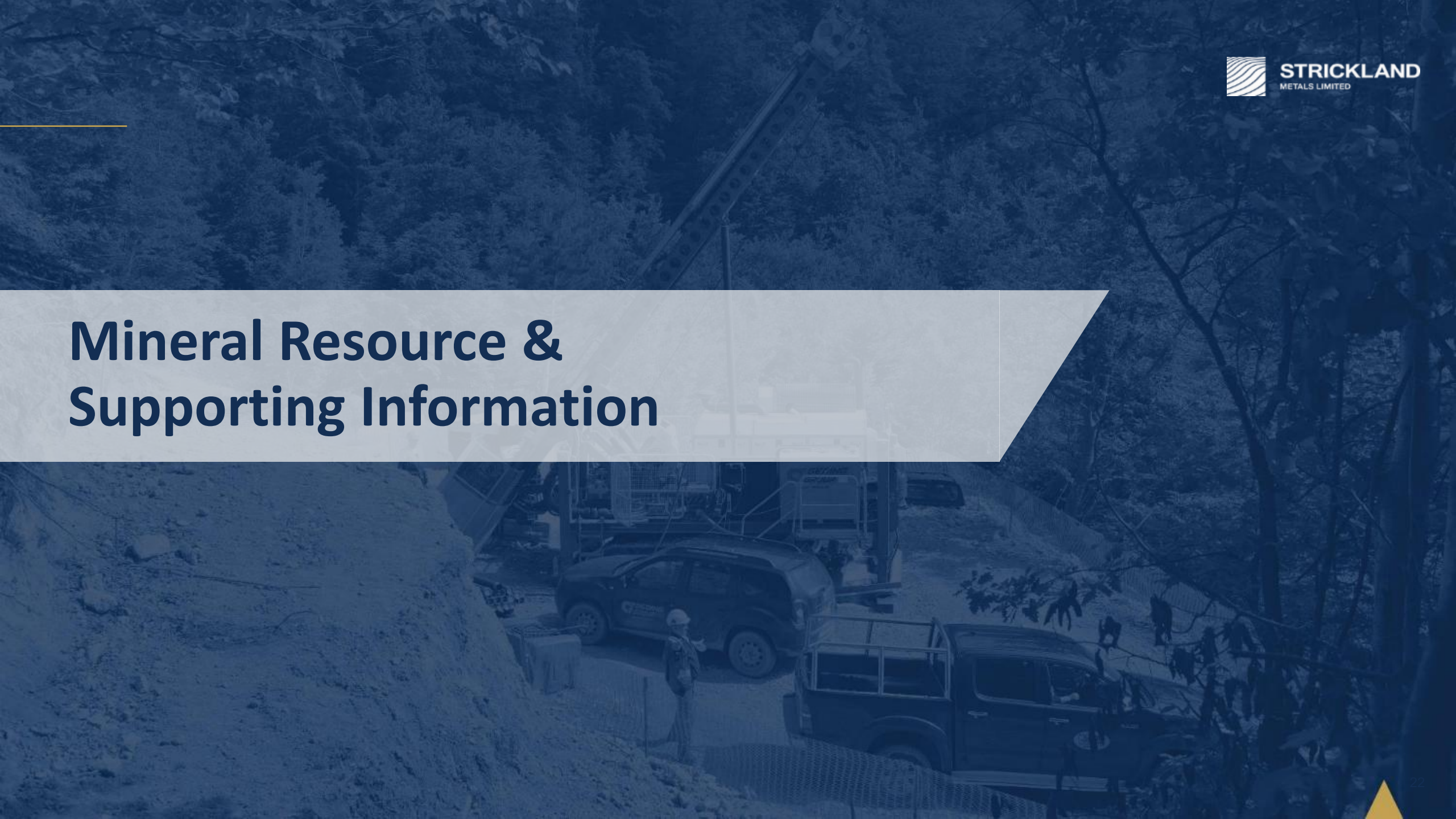
**Multiple opportunities for Mineral Resource Estimate updates**, featuring Shanac, Copper Canyon and Gradina.

**PFS delivery in mid-2027** targeting a sustainable underground development opportunity.



1. Refer to Appendix 1 for further details regarding Rogozna JORC 2012 Mineral Resource Estimate  
 2. Refer to Appendix 2,3 and 6 for further source details regarding peer comparisons.

# Mineral Resource & Supporting Information



# Appendix 1: Rogozna Mineral Resource Estimates

Prospect	Tonnes (Mt)	AuEq (g/t)	Au (g/t)	Cu (%)	Ag (g/t)	Pb (%)	Zn (%)	AuEq (Moz)	Au (Moz)	Cu (kt)	Ag (Moz)	Pb (kt)	Zn (kt)
<b>Shanac (April 2026)<sup>B</sup></b>													
Indicated	30	1.30	0.83	0.13	7.20	0.29	0.36	1.25	0.80	39	6.9	87	108
Inferred	130	0.98	0.55	0.11	6.10	0.21	0.34	4.10	2.30	2.30	143	25.5	442
<b>Sub-total</b>	<b>160</b>	<b>1.0</b>	<b>0.60</b>	<b>0.11</b>	<b>6.31</b>	<b>0.23</b>	<b>0.34</b>	<b>5.35</b>	<b>3.10</b>	<b>182</b>	<b>32.4</b>	<b>360</b>	<b>550</b>
<b>Gradina (December 2025)<sup>C</sup></b>													
Inferred	12	3.0	3.0	-	-	-	-	1.2	1.2	-	-	-	-
<b>Sub-total</b>	<b>12</b>	<b>3.0</b>	<b>3.0</b>	<b>-</b>	<b>-</b>	<b>-</b>	<b>-</b>	<b>1.2</b>	<b>1.2</b>	<b>-</b>	<b>-</b>	<b>-</b>	<b>-</b>
<b>Medenovac (February 2025)<sup>D</sup></b>													
Inferred	21	1.9	0.77	0.27	6.3	0.11	1.54	1.28	0.52	57	4.3	23	320
<b>Sub-total</b>	<b>21</b>	<b>1.9</b>	<b>0.77</b>	<b>0.27</b>	<b>6.3</b>	<b>0.11</b>	<b>1.54</b>	<b>1.28</b>	<b>0.52</b>	<b>57</b>	<b>4.3</b>	<b>23</b>	<b>320</b>
<b>Copper Canyon (October 2021)<sup>E</sup></b>													
Inferred	28	0.9	0.40	0.30	-	-	-	0.81	0.36	84	-	-	-
<b>Sub-total</b>	<b>28</b>	<b>0.9</b>	<b>0.40</b>	<b>0.30</b>	<b>-</b>	<b>-</b>	<b>-</b>	<b>0.81</b>	<b>0.36</b>	<b>84</b>	<b>-</b>	<b>-</b>	<b>-</b>
<b>Project Total</b>													
Indicated	30	1.30	0.83	0.13	7.20	0.29	0.36	1.25	0.80	39	6.9	87	108
Inferred	191	1.2	0.71	0.15	4.84	0.16	0.40	7.35	4.34	284	29.7	296	765
<b>Total<sup>A</sup></b>	<b>221</b>	<b>1.2</b>	<b>0.72</b>	<b>0.15</b>	<b>5.16</b>	<b>0.17</b>	<b>0.40</b>	<b>8.60</b>	<b>5.14</b>	<b>323</b>	<b>36.7</b>	<b>383</b>	<b>873</b>

# Appendix 1: Rogozna Mineral Resource Estimates (Continued)

## Rogozna Mineral Resource Estimates Table Notes:

A. Rounding errors are apparent in the summation of total resources.

B. Shanac (April 2026) AuEq grade is based on metal prices of gold (US\$3,000/oz), copper (US\$12,000/t), silver (US\$70/oz), lead (US\$1,800) and zinc (US\$3,000/t) and overall metallurgical recoveries of 80% for these metals. These estimates are based on Strickland's interpretation of potential long term commodity prices and their interpretation of initial metallurgical test work and give the following formula: Au Equivalent (g/t) = Au (g/t) + 1.24 x Cu(%) + 0.0233 x Ag (g/t) + 0.187 x Pb(%) + 0.311 x Zn(%). It is the Company's opinion that all the elements included in the metal equivalents calculations have a reasonable potential to be recovered and sold. A 0.60g/t AuEq cut-off has been used for the Shanac Mineral Resource Estimate in this table.

C. Gradina (December 2025) estimates include Au equivalent values for consistency with the other Rogozna deposits. The AuEq grade includes only gold grades. Estimates for this deposit reflect a price and metallurgical recovery for gold of \$US2,500/oz and 90% respectively on the basis of Strickland's interpretation of potential long term commodity prices and their interpretation of initial metallurgical test work and gives the following formula: Au Equivalent (g/t) = Au (g/t). It is the Company's opinion that the gold included in the metal equivalents calculations has a reasonable potential to be recovered and sold. A 1.5 g/t Au cut-off has been used for the Gradina Mineral Resource Estimate.

D. Medenovac (February 2025) AuEq grade is based on metal prices of gold (US\$2,250/oz), copper (US\$10,000/t), silver (US\$25/oz), lead (US\$2,200) and zinc (US\$3,000/t) and overall metallurgical recoveries of 80% for these metals. These estimates are based on Strickland's interpretation of potential long term commodity prices and their interpretation of initial metallurgical test work and use the following formula: AuEq (g/t) = Au (g/t) + 1.38 x Cu(%) + 0.011 x Ag (g/t) + 0.304 x Pb(%) + 0.413 x Zn(%). It is the Company's opinion that all the elements included in the metal equivalents calculations have a reasonable potential to be recovered and sold. A 1.0 g/t AuEq cut-off has been used for the Medenovac Resource Estimate. A 0.60 g/t AuEq cut-off has been used for the Shanac estimate.

E. Copper Canyon (October 2021) AuEq grade based on metal prices of gold (US\$1,750/oz), copper (US\$10,000/t), and metallurgical recoveries of 80% for both metals. These estimates are based on the Company's assumed potential commodity prices and recovery results from initial and ongoing metallurgical test work and use the following formula for Copper Canyon: AuEq (g/t) = Au (g/t) + 1.55 x Cu (%). It is the Company's opinion that all the elements included in the metal equivalents calculations have a reasonable potential to be recovered and sold. A 0.4g/t AuEq cut-off has been used for the Copper Canyon Resource Estimate.

Please refer to the Company's ASX announcements dated:

- 15 April 2026 titled: "1.25Moz AuEq Maiden Indicated Resource for Shanac" for full details regarding the Shanac Mineral Resource Estimate;
- 10 December 2025 titled: "1.2Moz @3.0g/t Gold in Maiden Gradina Mineral Resource Estimate" for full details regarding the Gradina Mineral Resource Estimate;
- 19 February 2025 titled: "Rogozna Resource Increases by 23% to 6.69Moz AuEq" for full details regarding the Medenovac Mineral Resource Estimate; and
- 17 April 2024 titled: "Acquisition of the 5.4Moz Au Eq Rogozna Gold Project" for full details regarding the Copper Canyon Mineral Resource Estimate.

# Appendix 2: Junior Listed ASX Gold Project Summary

Reported JORC 2012 Resource												
Project	Company	Exchange	Development Stage	Tonnes (Mt)	Gold Grade (g/t)	Copper Grade (%)	Lead Grade (%)	Zinc Grade (%)	Silver Grade (g/t)	AuEq Grade (g/t)	Contained AuEq (Moz)	Source
Rogozna	Strickland Metals	ASX:STK	Approaching PFS	221	0.72	0.15	0.17	0.39	5.16	1.20	8.6	1.25Moz AuEq Maiden Indicated Resource for Shanac, 15 April 2026
Estelle	Nova Minerals	ASX:NVA	PFS/Scoping Complete	937	0.30	0.00	0.00	0.00	0.00	0.30	8.4	2025 Annual Report. Estelle Mineral Resource represents NVA 85% share.
El Guayabo	Challenger Gold	ASX:CEL	Exploration	431	0.37	0.07	0.00	0.00	2.30	0.50	6.9	Ecuador Resource Doubled to 9.1 million ounces AuEq, April 2025 (CEL share 6.9Moz)
Maverick Springs	Sun Silver	ASX:SS1	Approaching PFS	237	0.30	0.00	0.00	0.00	45.50	0.81	6.1	Maverick Springs Resource increased by 59Moz AgEq to 539Moz, 9 Dec 2025
Afema	Turaco Gold	ASX:TCG	PFS In Progress	115	1.20	0.00	0.00	0.00	0.00	1.30	4.7	Afema Resource growth continues to 4.65Moz Gold, 18 March 2026
Bullabulling	Minerals 260	ASX:MI6	PFS In Progress	130	1.00	0.00	0.00	0.00	0.00	1.00	4.5	Bullabulling Gold Project Mineral Resource doubles to 4.5Moz, 01 December 2025
Bramaderos	Sunstone Metals	ASX:STM	Exploration	220	0.33	0.10	0.00	0.00	1.16	0.50	3.6	Resource jumps 33% to 3.6Moz AuEq, 24 November 2025
Sturec	MetalsTech	ASX:MTC	PFS In Progress	68	1.22	0.00	0.00	0.00	10.11	1.33	2.9	Quarterly activities/appendix 5B cash flow report, 30 June 2025
Minyari	Antipa Minerals	ASX:AZY	PFS/Scoping Complete	51	1.54	0.17	0.00	0.00	0.44	1.78	2.94	Minyari Project resource grows to 3.6moz gold equivalent, 2 Apr 2026
Hualilan	Challenger Gold	ASX:CEL	PFS In Progress	61	1.12	0.00	0.06	0.44	5.97	1.38	2.7	Quarterly activities report, 30 June 2025
Katanning	Ausgold	ASX:AUC	Feasibility Complete	69	1.11	0.00	0.00	0.00	0.00	1.11	2.4	Updated Definitive Feasibility Study, 16 December 2025
Bendigo-Ophir	Santana Minerals	ASX:SMI	PFS/Scoping Complete	34	2.09	0.00	0.00	0.00	0.00	2.09	2.3	Quarterly activities & cashflow report, 30 June 2025
Gum Creek	Horizon Gold	ASX:HRN	Feasibility In Progress	38	1.89	0.00	0.00	0.00	0.00	1.89	2.3	Gum Creek Project Gold Resource Update, 4 November 2025
Bau	Besra Gold Inc.	ASX:BEZ	Feasibility In Progress	53	1.34	0.00	0.00	0.00	0.00	1.34	2.3	Updated Mineral Resource Estimate, 21 October 2025
Apollo Hill	Saturn Metals	ASX:STN	PFS Complete	137	0.51	0.00	0.00	0.00	0.00	0.51	2.2	Apollo Hill Gold resource increases to 2.24moz, July 2025
El Zorro	Tesoro Gold	ASX:TSO	PFS Complete	51	1.10	0.00	0.00	0.00	0.00	1.10	1.8	2025 Annual Report
Woodlark Island	Geopacific Resources	ASX:GPR	Feasibility In Progress	48	1.07	0.00	0.00	0.00	0.00	1.07	1.7	Quarterly activities & cashflow report, 30 June 2025
Tunkilla	Barton Gold Holdings	ASX: BGD	PFS/Scoping Complete	63	0.80	0.00	0.00	0.00	2.80	0.81	1.6	Tunkilla JORC resources grow to 1.6moz gold, 3.1moz silver, March 2025

# Appendix 3: ASX Gold Project Resources

Project	Company	Measured			Indicated			Inferred			Total		
		Tonnes (Mt)	Gold Grade (g/t)	Contained Gold (Moz)	Tonnes (Mt)	Gold Grade (g/t)	Contained Gold (Moz)	Tonnes (Mt)	Gold Grade (g/t)	Contained Gold (Moz)	Tonnes (Mt)	Gold Grade (g/t)	Contained Gold (Moz)
Estelle	Nova Minerals	1	4.10	0.15	275	0.30	2.76	660	0.30	5.49	937	0.30	8.41
Rogozna	Strickland Metals	-	-	-	30	1.30	0.80	191	0.71	4.34	221	0.72	5.14
El Guayabo	Challenger Gold	-	-	-	28	0.35	0.32	403	0.37	4.78	431	0.37	5.13
Afema	Turaco Gold	-	-	-	67	1.20	2.67	48	1.30	1.99	115	1.30	4.65
Bullabulling	Minerals 260	-	-	-	93	1.00	3.00	42	1.10	1.50	130	1.00	4.50
Katanning	Ausgold	42	1.14	1.53	21	1.02	0.69	6	1.16	0.22	69	1.11	3.04
Sturec	MetalsTech	25	1.46	1.16	12	1.15	0.45	31	1.07	1.08	68	1.22	2.69
Minyari	Antipa Minerals	-	-	-	42	1.61	2.20	9	1.25	0.38	51	1.54	2.54
Bendigo-Ophir	Santana Minerals	-	-	-	22	2.30	1.60	13	1.80	0.73	34	2.09	2.34
Bramaderos	Sunstone Metals	-	-	-	40	0.38	0.49	190	0.32	1.95	220	0.33	2.33
Gum Creek	Horizon Gold	-	-	-	27	1.90	1.63	11	1.86	0.67	38	1.89	2.30
Maverick Springs	Sun Silver	-	-	-	-	-	-	237	0.30	2.29	237	0.30	2.29
Bau	Besra Gold Inc.	4	1.68	0.21	9	1.67	0.47	41	1.24	1.61	53	1.34	2.28
Apollo Hill	Saturn Metals	5	0.54	0.08	107	0.51	1.75	25	0.51	0.40	137	0.51	2.24
Hualilan	Challenger Gold	-	-	-	48	1.05	1.64	12	1.32	0.53	61	1.12	2.16
El Zorro	Tesoro Gold	-	-	-	32	1.10	1.12	20	1.11	0.69	51	1.10	1.82
Woodlark Island	Geopacific Resources	2	3.00	0.22	39	0.98	1.24	6	0.98	0.21	48	1.07	1.66
Tunkillia	Barton Gold Holdings	-	-	-	31	0.90	0.90	32	0.69	0.72	63	0.80	1.61

# Appendix 4: Junior Listed TSX Gold Project Summary

Project	Company	Exchange	Development Stage	Tonnes (Mt)	Reported Mineral Resource							Source
					Gold Grade (g/t)	Copper Grade (%)	Lead Grade (%)	Zinc Grade (%)	Silver Grade (g/t)	AuEq Grade (g/t)	Contained AuEq (Moz)	
Titiribi	GoldMining Inc.	TSX:GOLD	Exploration	676	0.40	0.09	0.00	0.00	0.00	0.53	11.5	GoldMining Inc. 2024 Annual Report
Whistler	GoldMining Inc.	TSX:GOLD	Advancing PFS	493	0.46	0.12	0.00	0.00	1.93	0.65	10.2	2024 Annual Report (GoldMining Inc. have 81% interest in Whistler Project Resource)
Volta Grande	Belo Sun Mining Corp	TSX:BSX	Prefeasibility/Scoping	196	0.96	0.00	0.00	0.00	0.00	0.96	6.1	Belo Sun 2024 Annual Report
Springpole	First Mining Gold Corp.	TSX:FF	Feasibility In Progress	255	0.68	0.00	0.00	0.00	4.22	0.73	6.0	NI 43-101 Technical report and Pre-feasibility Study, 22 Dec 2025
Rovina Valley	Euro Sun Mining Inc.	TSX:ESM	Feasibility	245	0.42	0.17	0.00	0.00	0.00	0.65	5.1	Management Discussion and Analysis 30 June 2025
Colomac	STLLR Gold Inc.	TSX:STLR	Prefeasibility/Scoping	95	1.67	0.00	0.00	0.00	0.00	1.67	5.1	STLLR Gold 2024 Annual Report
Black Pine	Liberty Gold Corp.	TSX:LGD	Feasibility	500	0.30	0.00	0.00	0.00	0.00	0.30	4.8	Preliminary Feasibility Study for Black Pine Oxide Gold Project, 10 October 2024
Fenelon and Martiniere	Wallbridge Mining Company	TSX:WM	Prefeasibility/Scoping	39	3.33	0.00	0.00	0.00	0.00	3.33	4.1	NI 43-101 Technical report and Preliminary economic assessment, 27 March 2025
Ixtaca*	Almaden Minerals	TSX:AMM	Feasibility	165	0.46	0.00	0.00	0.00	24.82	0.73	3.9	Revised annual report on form 20-F, 28 Sept 2023
Taguas	Orvana Minerals Corp.	TSX:ORV	Prefeasibility/Scoping	140	0.32	0.14	0.00	0.00	10.31	0.63	2.8	2024 Annual Report
La Mina	GoldMining Inc.	TSX:GOLD	Prefeasibility/Scoping	90	0.64	0.17	0.00	0.00	2.23	0.90	2.6	GoldMining Inc. 2024 Annual Report
Crucero	GoldMining Inc.	TSX:GOLD	Exploration	66	1.00	0.00	0.00	0.00	0.00	1.00	2.1	GoldMining Inc. 2024 Annual Report
Eau Claire	Fury Gold Mines	TSX:FURY	Prefeasibility/Scoping	12	4.95	0.00	0.00	0.00	0.00	4.95	1.9	Fury Gold Mines 2024 Annual Report
Cabacal	Meridian Mining UK Societas	TSX:MNO	Prefeasibility/Scoping	52	0.55	0.40	0.00	0.00	1.50	1.11	1.9	Cabacal NI 43-101 Technical Report and Pre-feasibility study, 10 March 2025
Yellowknife	GoldMining Inc.	TSX:GOLD	Exploration	23	2.39	0.00	0.00	0.00	0.00	2.39	1.8	GoldMining Inc. 2024 Annual Report

\* Mineral Resource estimate is reported in accordance with S-K 1300 requirements. All other resource estimates are reported in accordance with NI 43-101 requirements.

# Appendix 5: TSX Gold Project Resources

Project	Company	Measured			Indicated			Inferred			Total		
		Tonnes (Mt)	Gold Grade (g/t)	Contained Gold (Moz)	Tonnes (Mt)	Gold Grade (g/t)	Contained Gold (Moz)	Tonnes (Mt)	Gold Grade (g/t)	Contained Gold (Moz)	Tonnes (Mt)	Gold Grade (g/t)	Contained Gold (Moz)
Titiribi	GoldMining Inc.	85	0.39	1.06	350	0.40	4.49	242	0.41	3.16	676	0.40	8.71
Whistler	GoldMining Inc.	-	-	-	294	0.42	3.93	198	0.52	3.31	493	0.46	7.24
Volta Grande	Belo Sun Mining Corp	44	1.07	1.51	113	0.95	3.44	40	0.90	1.15	196	0.96	6.11
Springpole	First Mining Gold Corp.	-	-	-	191	0.78	4.79	64	0.38	0.78	255	0.68	5.60
Colomac	STLLR Gold Inc.	-	-	-	70	1.50	3.39	24	2.17	1.70	95	1.67	5.09
Black Pine	Liberty Gold Corp.	-	-	-	403	0.32	4.16	98	0.23	0.71	500	0.30	4.88
Fenelon and Martiniere	Wallbridge Mining Company	-	-	-	20	3.30	2.10	19	3.35	2.04	39	3.33	4.14
Rovina Valley	Euro Sun Mining Inc.	62	0.49	0.99	183	0.39	2.28	-	-	-	245	0.42	3.27
Ixtaca*	Almaden Minerals Ltd.	-	-	-	-	-	-	-	-	-	165	0.46	2.42
Crucero	GoldMining Inc.	-	-	-	31	1.01	0.99	36	1.00	1.15	66	1.00	2.14
Eau Claire	Fury Gold Mines Limited	2	5.67	0.29	5	5.64	0.87	5	4.13	0.72	12	4.95	1.88
La Mina	GoldMining Inc.	-	-	-	34	0.73	0.79	56	0.58	1.05	90	0.64	1.84
Yellowknife	GoldMining Inc.	1	2.12	0.08	13	2.35	0.98	9	2.47	0.74	23	2.39	1.80
Taguas	Orvana Minerals Corp.	-	-	-	39	0.37	0.47	98	0.30	0.94	138	0.32	1.40
Cabacal	Meridian Mining UK Societas	44	0.59	0.83	8	0.28	0.07	0	0.96	0.01	52	0.55	0.91

\* Mineral Resource estimate is reported in accordance with S-K 1300 requirements. All other resource estimates are reported in accordance with NI 43-101 requirements.

# Appendix 6: Peer ASX Listed Comparison Data

Company	Exchange	Ordinary Fully Paid Shares on Issue (M)	Share Price (A\$/ah)	Market Cap (A\$M)	Net Debt (A\$M)	Enterprise Value (A\$M)*	JORC 2012 Total Mineral Resources				Source
							Tonnes (Mt)	Grade (g/t AuEq)	Mineral Resource (Moz AuEq)	EV/Resource AuEq	
Besra Gold Inc.	ASX:BEZ	390.7	0.115	44.9	-7.8	37.1	53	1.34	2.29	16.2	Half Yearly Report and Management Discussion & Analysis, 13 March 2026
Sunstone Metals	ASX:STM	226.8	0.38	86.2	-7.8	78.3	284	0.52	4.80	16.3	Half Yearly Report and Accounts, 13 March 2026
MetalsTech	ASX:MTC	268.6	0.285	76.5	-9.0	67.5	68	1.33	2.87	23.5	Half Yearly Report and Accounts, 12 March 2026
Nova Minerals	ASX:NVA	456.2	0.75	342.1	-53.1	289.0	937	0.30	8.42	34.3	Half Yearly Report and Accounts, 12 March 2026
Challenger Gold	ASX:CEL	2438.8	0.15	365.8	-15.0	350.8	492	0.75	9.59	36.6	Full Year Statutory Accounts, 31 March 2026
Strickland Metals	ASX:STK	2634.5	0.21	553.2	-68.2	485.0	211	1.30	8.60	<b>56.4</b>	Net Debt as in Investor presentation, 17 March 2026.
Geopacific Resources	ASX:GPR	3205.8	0.045	144.3	-20.9	123.4	48	1.07	1.66	74.2	Annual Financial Statements, 30 January 2026
Tesoro	ASX:TSO	179.0	0.98	175.4	-22.2	153.3	51	1.10	1.82	84.4	Annual Report, 26 March 2026
Horizon Gold	ASX:HRZ	194.8	1.17	227.9	-37.5	190.4	38	1.89	2.30	82.8	Half Yearly Report and Accounts, 13 March 2026
Barton Gold Holdings	ASX:BGD	238.8	1.07	255.5	-17.2	238.3	40	0.88	2.27	105.0	Half Yearly Report and Accounts, 13 March 2026
Antipa Minerals	ASX:AZY	662.7	0.695	460.6	-50.7	409.9	68	1.51	3.31	123.8	Half Yearly Accounts, 13 March 2026. Minyari Resource Grows, 2 Apr 2026
Turaco Gold	ASX:TCG	1052.8	0.65	684.3	-68.0	616.3	115	1.30	4.65	132.5	Annual Report, 31 March 2026
Ausgold	ASX:AUC	547.9	0.98	536.9	-75.6	461.3	69	1.11	2.44	189.1	Half Yearly Report and Accounts, 20 March 2026
Santana Minerals	ASX:SMI	985.8	0.685	675.2	-90.0	585.3	34	2.10	2.34	250.4	Half Yearly Report and Accounts, 9 March 2026
Minerals 260	ASX:MI6	2263.6	0.76	1720.4	-31.2	1689.2	130	1.00	4.50	375.4	Half Yearly Report and Accounts, 9 March 2026

\* Market capitalisation as at 20 April 2026. Net Debt as of 31 December 2025 unless otherwise stated.

# Competent Persons Statement & Gold Equivalent Calculations

## Gold Equivalent Calculations (Rogozna Project)

Gold Equivalent calculations for exploration results within this presentation are based on the following metal prices;

For Gradina, The AuEq grade includes only gold grades. Estimates for this deposit reflect a price and metallurgical recovery for gold of \$US2,500/oz and 90%.

For Shanac, Medenovac Kotlovi and Red Creek (US\$2,250/oz), copper (US\$10,000/t), silver (US\$25/oz), lead (US\$2,200/t), zinc (US\$3,000/t), and metallurgical recoveries of 80% for all metals.

For Copper Canyon AuEq grade based on metal prices of gold (US\$1,750/oz), copper (US\$10,000/t), and metallurgical recoveries of 80% for both metals.

For Shanac, Medenovac Kotlovi and Red Creek the formula used for the AuEq is  $Au (g/t) + 1.38 \times Cu(\%) + 0.011 \times Ag (g/t) + 0.304 \times Pb(\%) + 0.413 \times Zn(\%)$ .

For Copper Canyon the formula used for AuEq is  $Au (g/t) + 1.55 \times Cu (\%)$ .

The Company considers that all metals have reasonable prospects of being recovered and sold.

## Competent Persons Statement

The information in this presentation that relates to Exploration Results and Mineral Resources has been extracted from various STK ASX announcements and are available to view on the STK website at [www.stricklandmetals.com.au](http://www.stricklandmetals.com.au) or through the ASX website at [www.asx.com.au](http://www.asx.com.au) (using ticker code "STK").

The Company confirms that it is not aware of any new information or data that materially affects the information included in the original market announcement and that all material assumptions and technical parameters underpinning the Mineral Resource Estimates in the relevant market announcement continue to apply and have not materially changed. The Company confirms that the form and context in which the Competent Person's findings are presented have not been materially modified from the original market announcement.



**STRICKLAND**  
METALS LIMITED

Paul L'Herpinere, Managing Director

[info@stricklandmetals.com.au](mailto:info@stricklandmetals.com.au)

+61 8 6256 8200