



OMNIA METALS GROUP LTD

Acquisition Antimony, Silver, REE & Gallium
Portfolio –
United States Of America

- + Stibnite Ridge Thompson Falls Antimony Project (Montana)
- + Radix REE Ga – Sheep Creek Projects (Montana)



APRIL 2026

Important Notices & Disclaimers

Private and Confidential

The information contained in this presentation is confidential and proprietary to Omnia Metals Group Ltd (Omnia Metals or the Company). This presentation is specifically provided to the receiving party for the purpose of reviewing a potential commercial, financial or securities transaction with or in relation to Omnia Metals. This presentation must not be copied or disseminated in any form to any other person without the prior written consent of the Company.

Nature of Document

This presentation has been prepared by Omnia Metals. The information in this presentation is a professional opinion only and is given in good faith. Certain information has been derived from third parties and though the Company has no reason to believe that it is not accurate, reliable or complete, it has not been independently audited or verified by the Company.

Forward-Looking Statements

Any forward-looking statements included in this presentation involve subjective judgement and analysis and are subject to uncertainties, risks and contingencies, many of which are outside the control of, and maybe unknown to the Company. Any forward-looking statements speak only as of the date of this document, assume the success of the Company's strategies, and are subject to significant regulatory, business, competitive and economic uncertainties and risks. Actual future events may vary materially from the forward-looking statements and the assumptions on which the forward-looking statements are based. Recipients of this presentation are cautioned to not place undue reliance on such forward- looking statements.

The Company makes no representation or warranty as to the accuracy, reliability or completeness of information in this presentation and does not take responsibility for updating any information or correcting any error or omission which may become apparent after this presentation has been issued.

To the extent permitted by law, the Company and its officers, employees and related bodies corporate disclaim all liability, direct, indirect or consequential (and whether or not arising out of the negligence, default or lack of care of the Company) for any loss or damage suffered by recipients of this presentation or other persons arising out of, or in connection with, any use or reliance on this presentation.

Competent Person's Statement

The information in this presentation that relates to Exploration Results is based on information compiled by Dr. James Warren who is a Member of the Australian Institute of Geoscientists and who is a Director of the Company. Dr. Warren is not an employee of Omnia Metals Group Ltd and has sufficient experience which is relevant to the style of mineralisation under consideration to qualify as a Competent Person as defined in the 2012 Edition of the "Australian Code for Reporting of Exploration Results, Mineral Resources and Ore Reserves". Dr. Warren consents to the inclusion in the presentation of the matters based on his information in the form and context in which it appears.

All currency amounts are in Australian dollars unless specified otherwise.

POST ACQUISITION

Corporate Snapshot



377,716,703

Shares On Issue
(post transaction)



\$3.0M

Cash
(post \$1m placement)



~\$7.9M

Market Capitalisation
(based of last price of \$0.021)



~\$4.9M

Enterprise Value

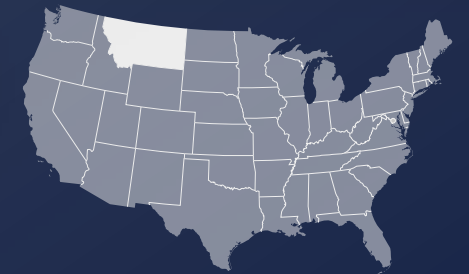
OMNIA METALS GROUP LTD (ASX:OM1) – SHARE PRICE CHART (12 MO)



Acquisition & Staking

OMNIA METALS GROUP LTD (ASX:OM1) TO ENTER THE USA CRITICAL MINERALS SPACE,

Portfolio of Stibnite & Silver (Acquired) and REE and Gallium (staked) potential assets in the United States of America.



100%

**Stibnite Ridge
Thompson Falls
Montana, USA**

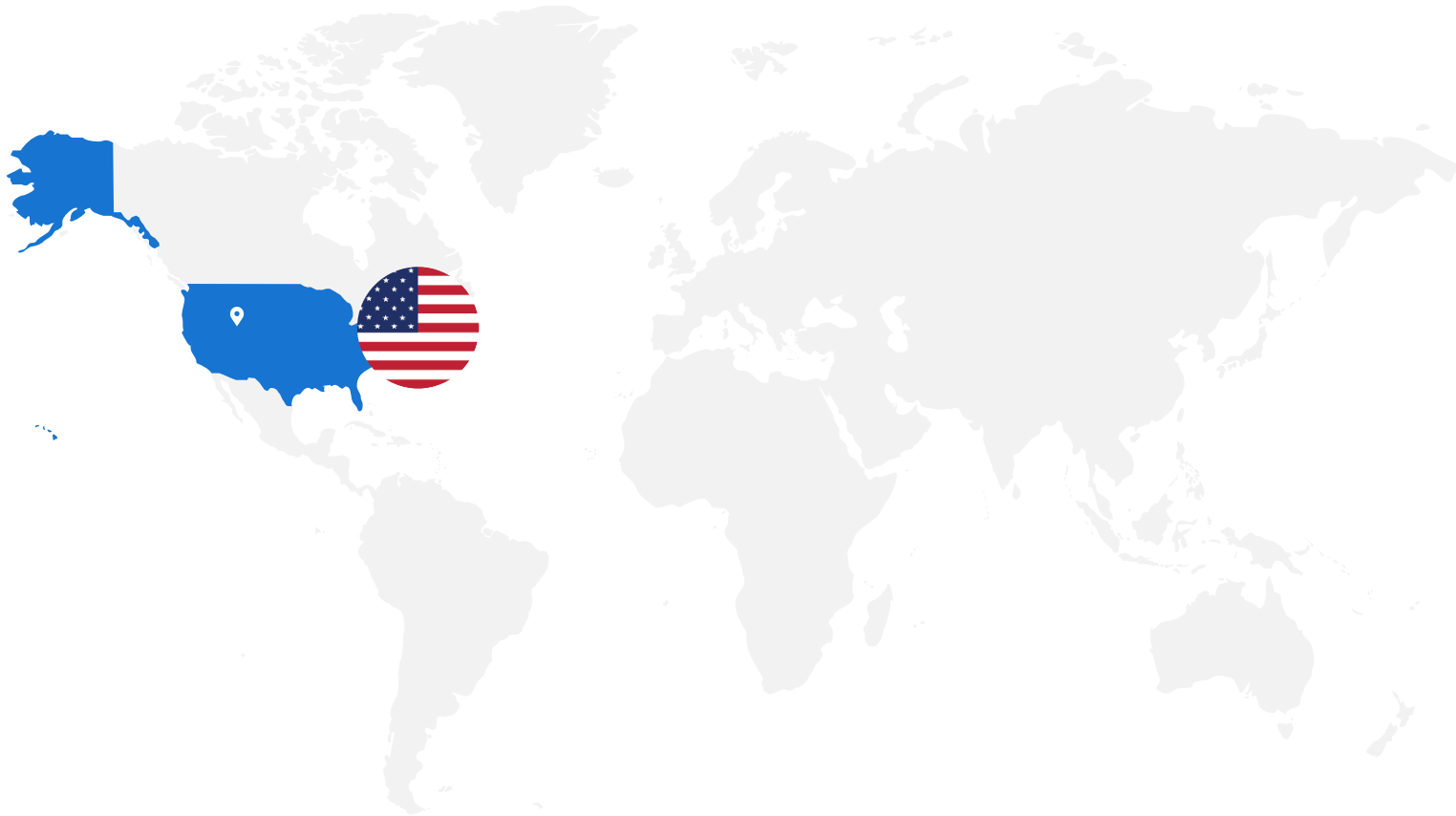
- Strong land position in the **Stibnite Hill structural corridor** (Sanders County, Montana, USA)
- **Directly abutting US Antimony Corp (UAMY) Thompson Falls Stibnite Hill Project and Smelter.**

100%

**Radix REE Ga Project
Sheep Creek
Montana, USA**

- Directly abuts **USCM's Sheep Creek — the highest-grade REE Ga deposit in the United States**
- Same carbonatite geological system;
- Radix sits on the NW flank of the same trend

Permitting Advantage



THE USA BENEFIT

Federal Critical Minerals Priority

Defence Production Act Eligibility

BLM-Administered Public Land

USGS Earth MRI Program

Tier-1 US Mining Jurisdiction

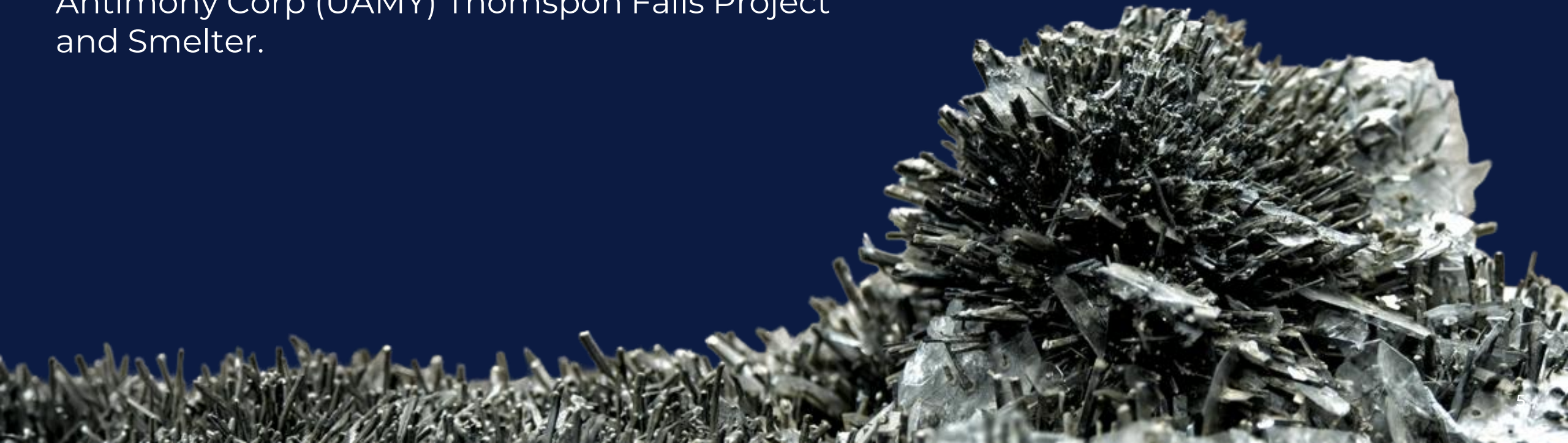


LOCATION

Thompson Falls

STIBNITE RIDGE PROJECT

positioned on the Stibnite Hill structural corridor (Sanders County, Montana) directly abutting US Antimony Corp (UAMY) Thompson Falls Project and Smelter.



Investment Summary

ASSET

Stibnite Ridge Project (blue) sits adjacent to the Stibnite Hill–Prospect Creek antimony district owned by UAMY (green).

WHY HERE

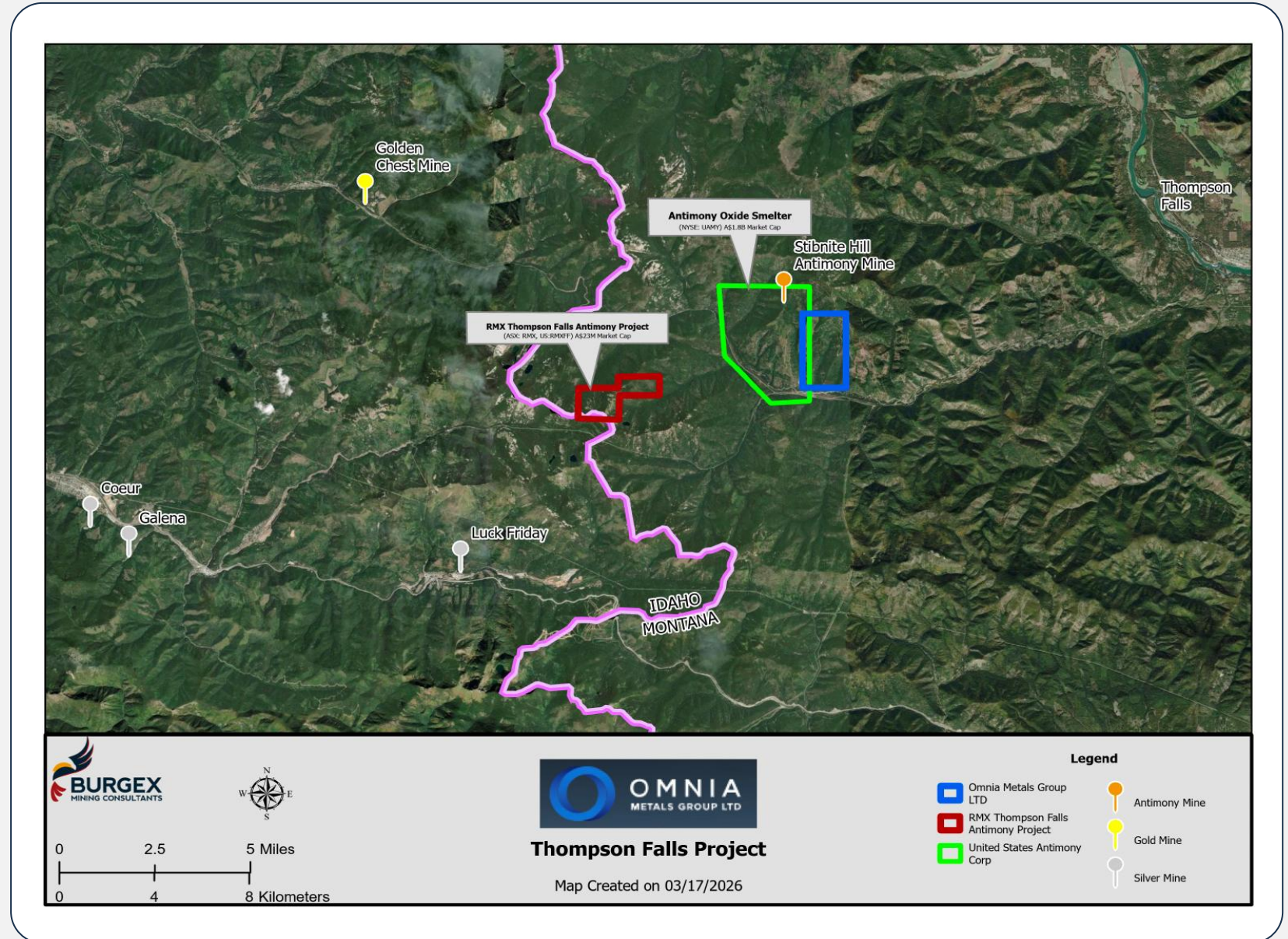
Proven antimony endowment; stibnite-bearing quartz veins hosted in the Prichard Formation.

WHY THIS AREA

Selected to capture the district's key fault/fold architecture associated with known mineralisation.

DE-RISKING

Clear pathway — validate structures/host rocks, sample for Sb + pathfinders, rank targets for follow-up.



UAMY Antimony Project

STIBNITE RIDGE PROJECT LOCATED ON THE STIBNITE HILL STRUCTURAL CORRIDOR

(Sanders County, Montana)

Highly prospective area (blue)

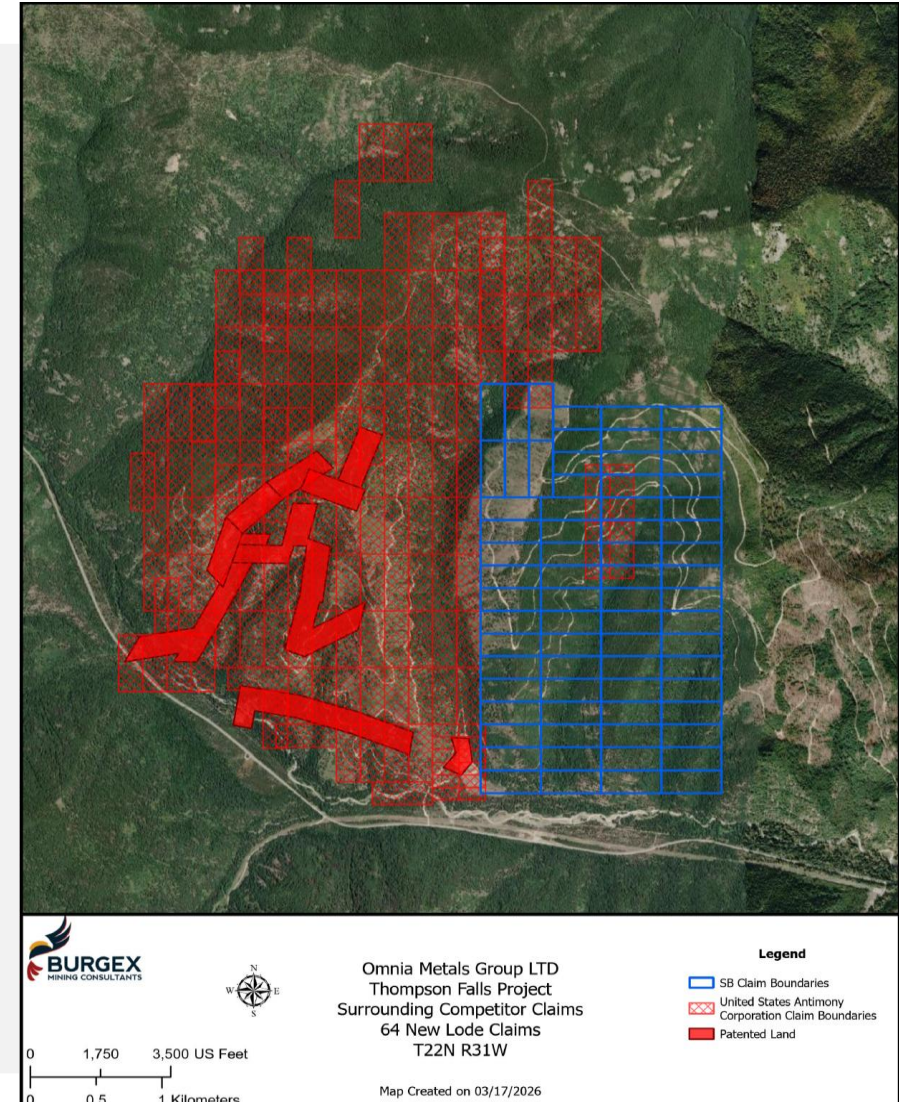
focused on Antimony, abutting US Antimony Corp (NYSE:UAMY) (red) Thompson Falls project and smelter

District-scale antimony system

hosted in the Prichard Formation and controlled by the Thompson Pass Fault and related folds

Clear near-term pathway:

validate geology/structure → sample for Sb and pathfinders → prioritise drill targets





ANTIMONY OXIDE SMELTER Thompson Falls, Montana

This plant has a capacity to produce 15,000,000 pounds per year of antimony oxide, or 5,000,000 pounds per year of antimony



\$245M

DLA CONTRACT & STRATEGIC DEFENSE PARTNERSHIP

- **Validation & De-Risking**
Sole-source DOD contract confirms U.S. defense confidence
- **Scale Leverage**
\$245M award = ~16x 2024 revenue — transformational growth
- **Supply Chain Security**
Reduces reliance on China; ensures U.S. alternatives
- **Barrier to Entry**
Only DOD-approved antimony fully integrated miner and producer in North America
- **Policy Alignment**
Backed by DOD, DPA, and U.S. critical mineral strategy
- **Revenue Visibility**
Multi-year IDIQ enables stable, predictable revenue
- **Upside Optionality**
Rising defense demand could unlock further awards
- **Replicable Model**
Blueprint for future defense mineral partnerships

SILVER AND GOLD REFINERY Thompson Falls, Montana

This plant recovers silver and gold as either a high purity silver metal and/or gold as dore or high purity metal. The current capacity is 10,000 ounces of silver and 50 ounces of gold per month.



\$106.7M

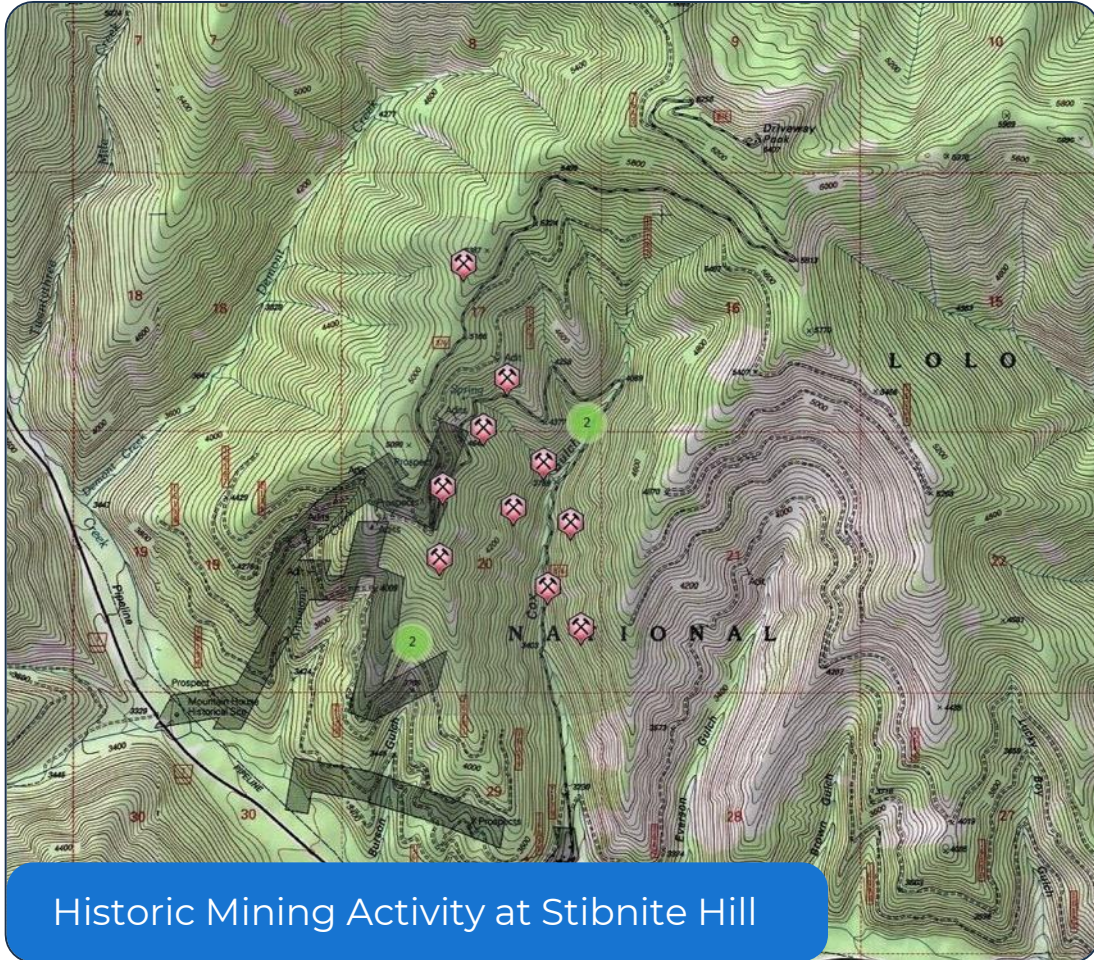
Corporate Contract With U.S. Industrial Fabric Manufacturer

- **Purchase of Antimony Trioxide**, a key ingredient in flame retardant materials
- **Reduces customer exposure** to international supply disruption
- **This contract represents a key milestone** in restoring and strengthening domestic industrial collaboration
- **Reinforces both parties' commitment** to supply security within the USA
- **Signals a broader industrial policy trend** toward reshoring critical mineral supply chains

LOCATION & ACCESS

Historic Mining Region

Thompson Falls, Montana



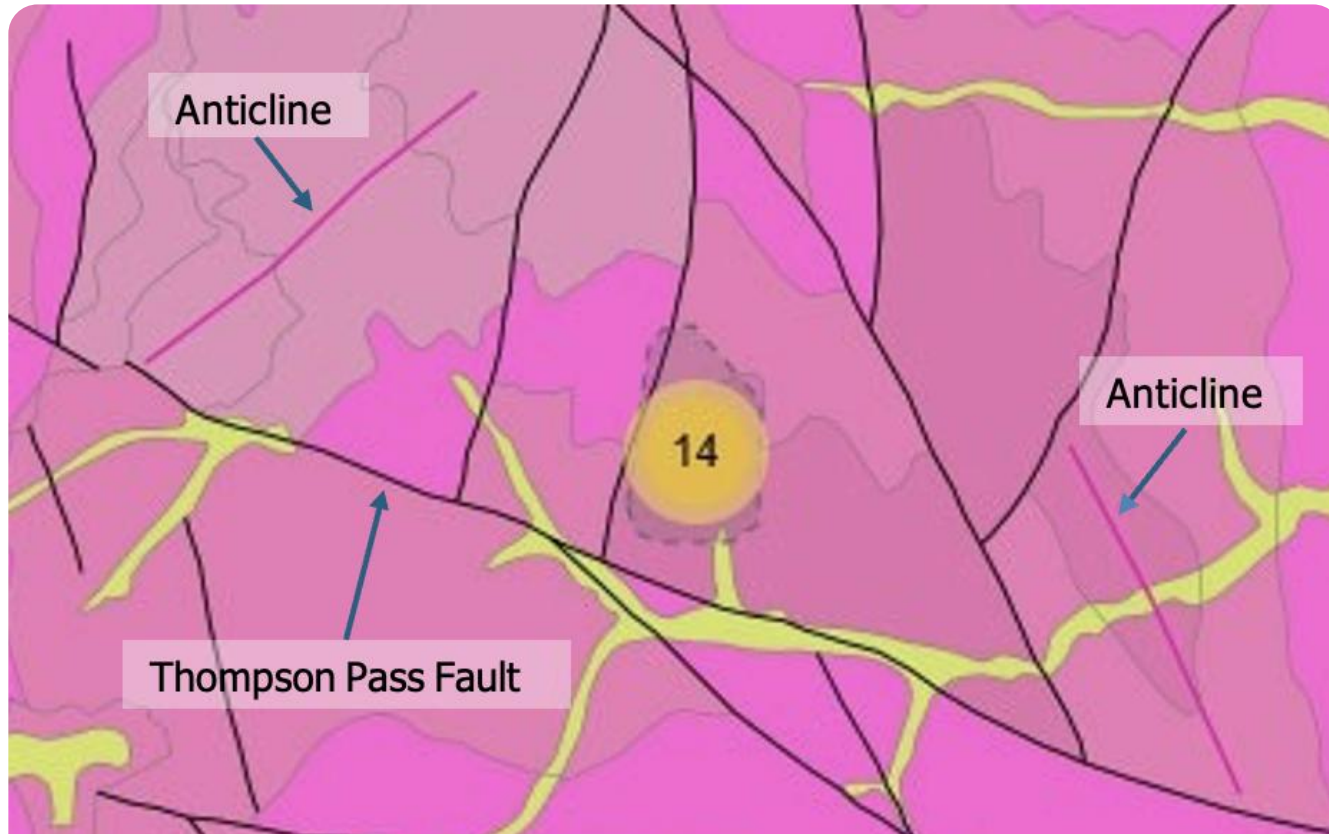
Historic Mining Activity at Stibnite Hill

Stibnite Ridge Project is in Sanders County near Thompson Falls, within the Stibnite Hill–prospect Creek District

The two blocks are positioned adjacent to existing claim activity and accessible for follow-up validation work

Road access clean outside of winter.

Structure Controls the System



Geologic map from Mindat.org

showing key structural and historical features of the Stibnite Hill area. The yellow circle highlights zones of historic mining and prospecting, the arrow indicates the trace of the Thompson Pass Fault, and the pink lines delineate the axis of the anticline.

ANTIMONY MINERALIZATION

is structurally controlled by the Thompson Pass Fault and related folds/fractures

The Prichard Formation

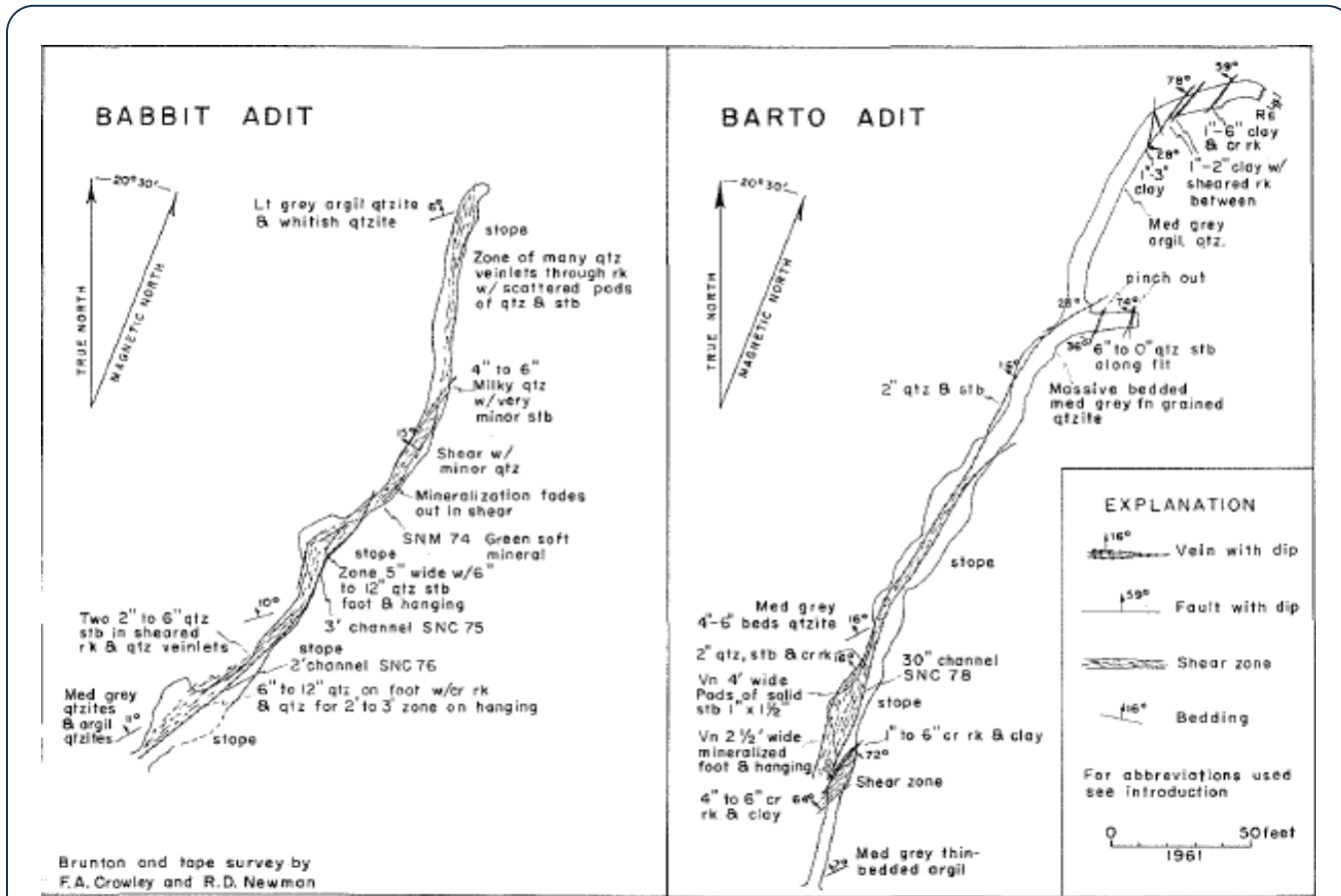
is the primary host of Sb-bearing quartz veins in the district

These controls provide a repeatable targeting framework:

fault zones, shears, bedding-plane fractures, and fold-related corridors

REGIONAL MINERALISATION STYLE

Sb-bearing Quartz Veins



Mineralisation occurs mainly as fissure fillings and replacement veins in Prichard Formation argillite and quartzite

Veins are generally northeast-trending, low-angle, and bedding-parallel (some slightly crosscutting)

Assemblage commonly includes quartz + stibnite with pyrite, sphalerite, and arsenopyrite in smaller amounts

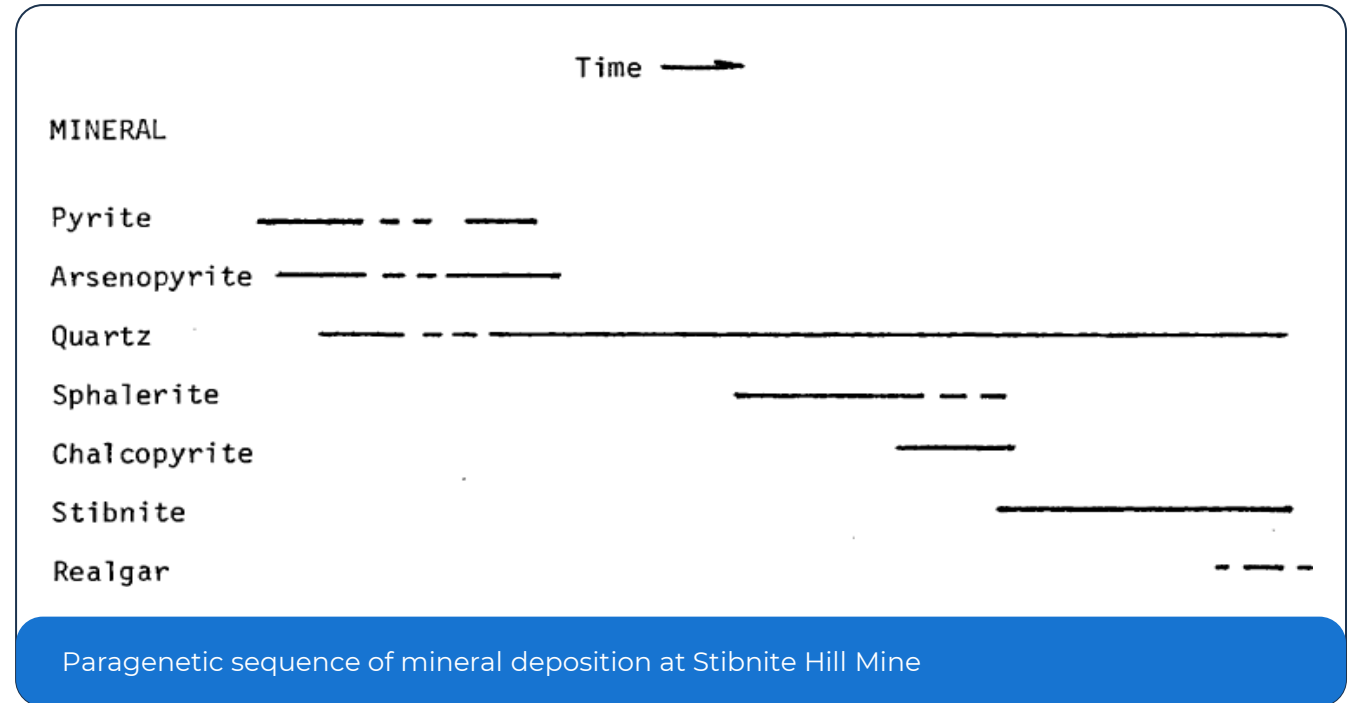
Map of the Babbit and Barto Adits
which are historic Antimony producers in the Sanders County area

How We De-risk Fast

Targeting focuses on structures associated with the Thompson Pass Fault and anticline system

Geochemical pathfinders highlighted by Burgex include Sb, As, Hg, Pb, and Zn, supported by trace-element zonation concepts

Integrating mapping + sampling into a GIS framework supports prioritising fault intersections and projected vein extensions



THOMPSON PASS FAULT EXPOSURE

Fault Corridor Target is a claim block in the lower unit of the **Prichard Formation**

This area covers part of the **Thompson Pass Fault**, a key control on district mineralisation

Positioning is designed to capture structurally controlled quartz–stibnite vein potential along the same corridor as known occurrences

UPPER PRICHARD + ADJACENT FAULT

Upper Prichard Zone Target is located northeast of competing claims

Situated within the **upper unit of the Prichard Formation** (the primary host cited for district mineralisation)

The block covers a fault adjacent to the Thompson Pass Fault, providing additional structural opportunity



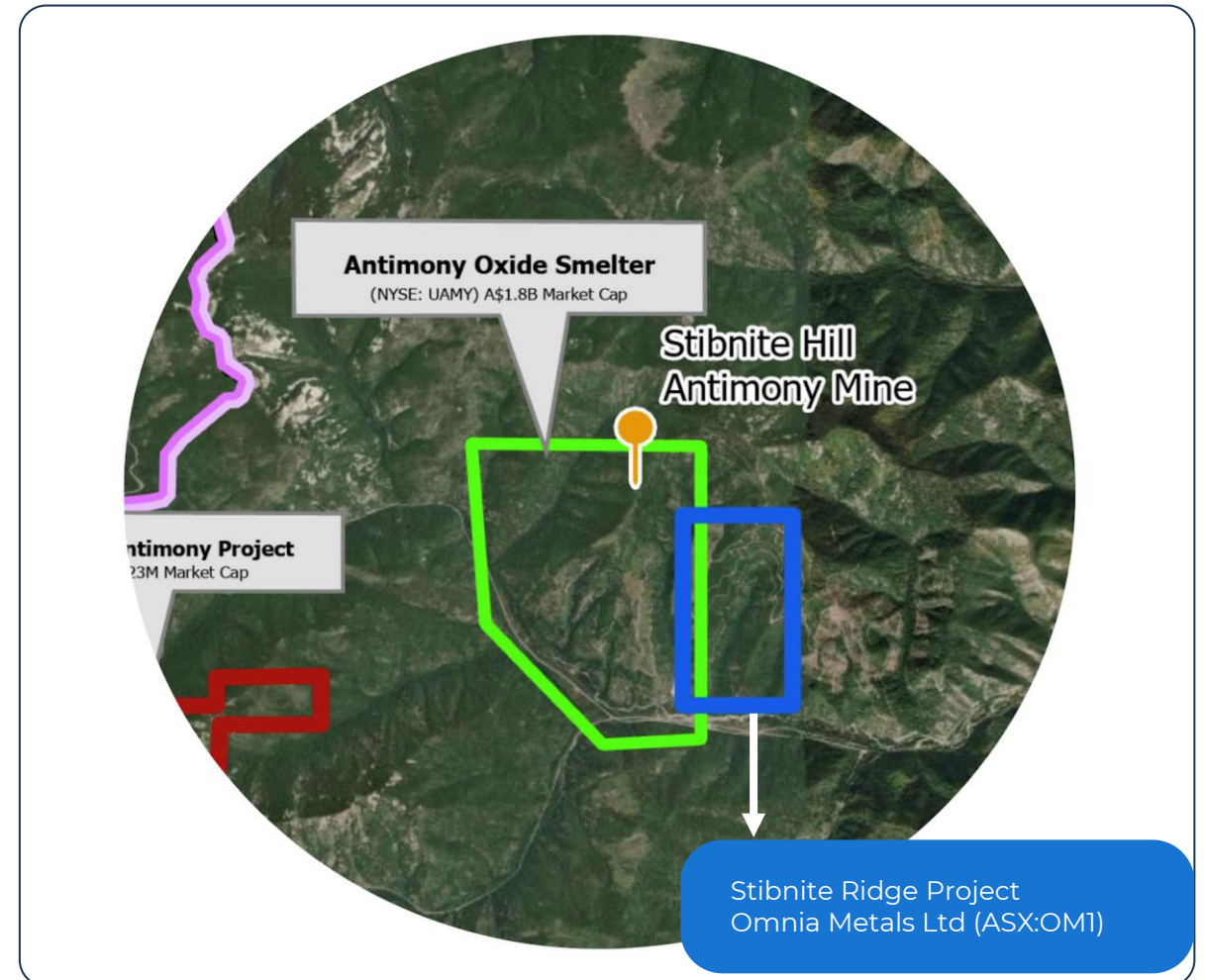
Competitive Landscape & District Context

WELL-KNOWN HISTORIC
PRODUCTION GROUND AT
STIBNITE HILL WITH SMELTER
RESTART



Prospective surrounding ground secured
that falls under the same geologic units and fault
system responsible for Stibnite Hill mineralisation

The aligned image illustrates
Close proximity to US Antimony Corp (NYSE:UAMY)
Thompson Falls project and smelter



Proposed Work Program – Stibnite Ridge

Complete field validation through mapping, sampling, and inspection of historic workings

First-pass work should will on faults, shears, bedding planes, and projected vein extensions

Target refinement improves by integrating geochemical and/or geophysical results within a GIS workflow to highlight fault intersections and projected vein extensions

Outputs: ranked target zones for follow-up programs (trenching and/or drill planning subject to access/permits)

Near-term value catalyst is rapid target definition on structurally favourable Prichard Formation ground adjacent to a proven district.

Radix REE Ga Project



ADJACENT USA'S HIGHEST GRADE REE & GALLIUM DEPOSIT

80 lode mining claims across ~3,204 acres

Western Montana on the Montana – Idaho border in Ravalli County

Directly adjacent USCM Sheep Creek — **America's highest-grade REE Ga deposit**

Same carbonatite geological system as adjacent USCM land position

Existing road access; Tier-1 US mining jurisdiction

Multiple priority zones (A–F) identified

Target commodities: La, Ce, Nd, Pr, Dy, Tb (magnet metals) & Gallium

REalloys (NASDAQ:ALOY) sign an Offtake MOU – April 2026 with USCM for Sheep Creek feed.

US Critical Minerals REE Ga Project

RADIX REE Ga PROJECT LOCATED DIRECTLY ADJACENT USA'S ARGEST REE PROJECT (Ravalli County, Montana)

Highly prospective area (blue) focused on REE and Gallium abutting US Critical Minerals (green) Sheep Creek project

20.1% TREE
avg ~9% TREO

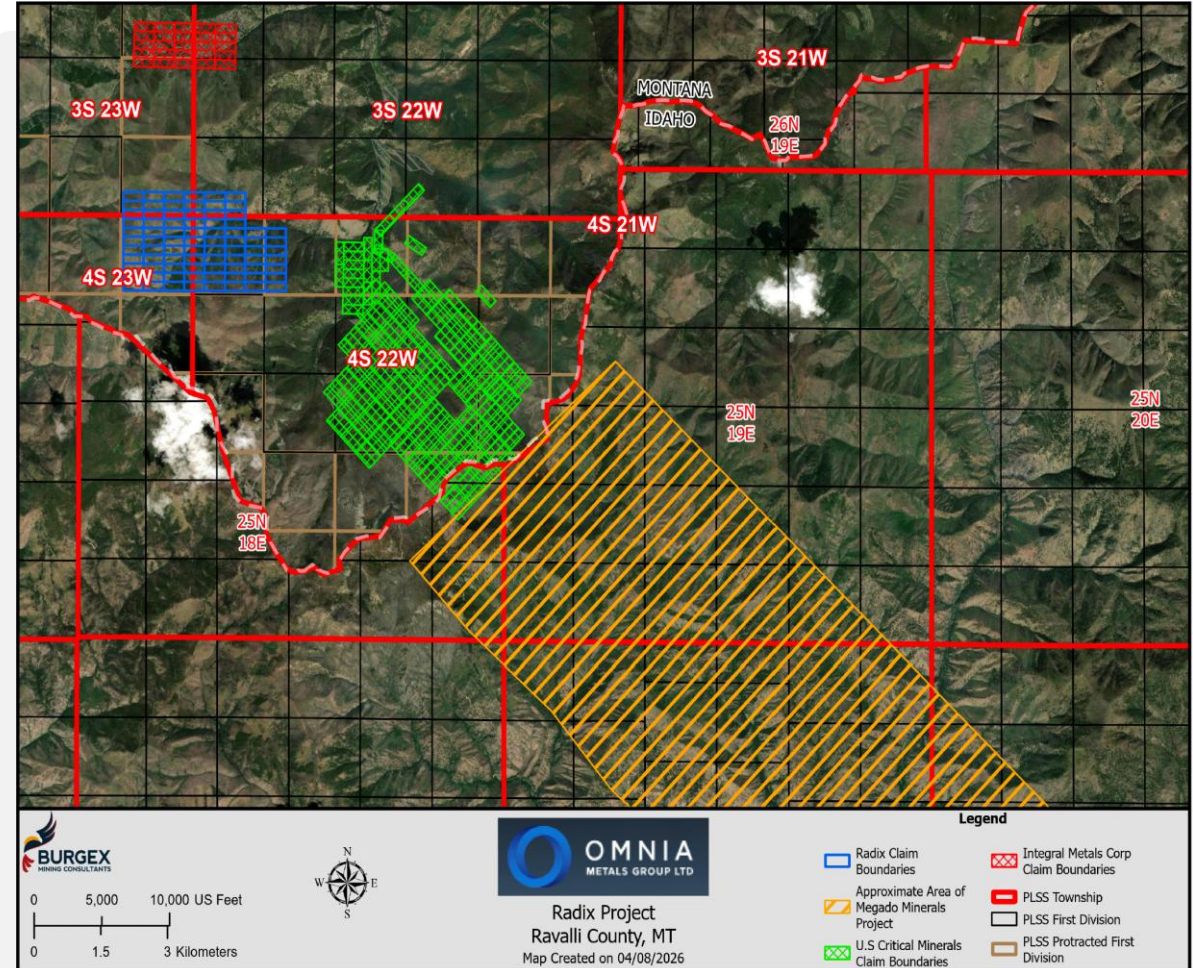
300ppm Ga
6x > than Chinese prod

3.3% NdPr

2026 Production

District-scale REE Ga system

Sits in Rocky Mountain Cordillera belt known to host multiple alkaline-carbonatite intrusive complexes and Radix sits on the NW flank of the same carbonatite trend.



US Critical Materials Sheep Creek – Proven District, Advancing to Production



Idaho National Laboratory Partnership

USCM extended an agreement with Idaho National Laboratory (INL) in 2025 to develop a modular pilot beneficiation plant — validating metallurgical recoveries, scalability, and environmental performance at Sheep Creek. INL sampling returned 17.8% REE + 350 ppm gallium from a single sample.



2026 Production Target & Investment Secured

USCM has secured investment for its Sheep Creek project and is targeting volume production commencement in 2026. Over 50 surface carbonatite formations are confirmed, with carbonatites up to 3m wide traceable for 200m+ along strike, and evidence of a larger deposit at depth.



REalloys MOU – April 2026 Offtake Committed

REalloys Inc. (NASDAQ: ALOY) signed a strategic MOU with USCM for up to 10% offtake from Sheep Creek, targeting a fully domestic heavy REE supply chain for US defence stockpiles. The framework includes potential equity exchange and joint pursuit of government financing — zero Chinese involvement.

60+ Surface Carbonatite Formations

ACROSS SHEEP CREEK DISTRICT

60+ carbonatite formations documented within the broader district. USCM's evidence indicates the deposit extends at depth, substantially increasing the overall resource scale.

Radix captures the same trend on the NW flank.

While historical activity focused on high-grade veins, modern interpretation recognises the potential for:

01. The Sheep Creek–Radix corridor hosts one of the most significant carbonatite REE systems in North America
02. Dike orientations are NW-SE along strike, traceable over hundreds of metres at surface, with widths of up to 3 metres.
03. B-horizon soils anomalous in La, Ce, Nd, Pr, Nb, Th, U, Ga; iron-stained carbonate dike/breccia outcrops; pan concentrate vectors along Sheep Creek tributaries



USMC Sheep Creek - banded carbonatite exposed hear top of right rib, 'Approximately feet. of vein here not counting calcite stringers in footwall and hanging wall. <https://uscriticalmaterials.com/gallery/>

Proposed Pathway to Discovery

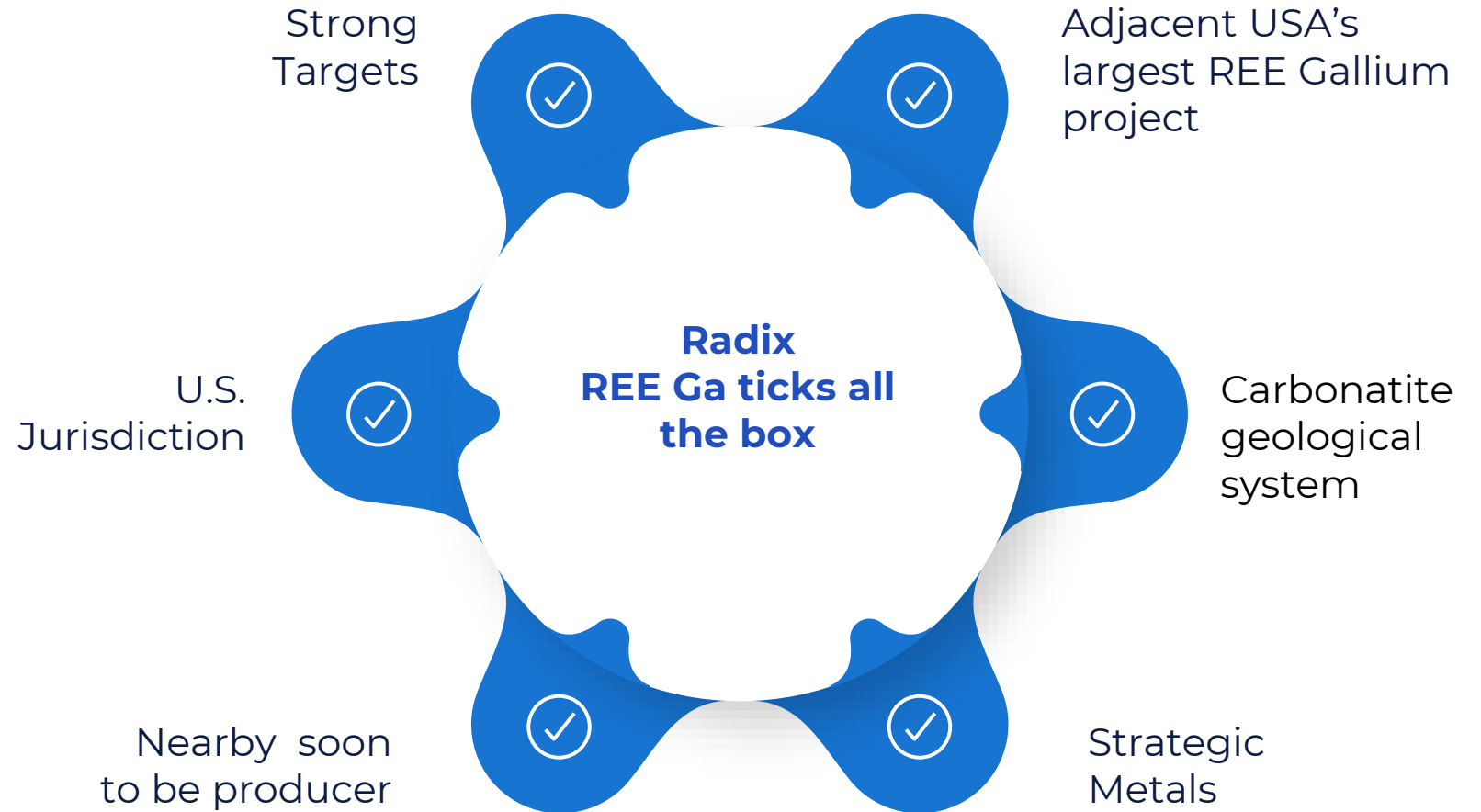
Complete field validation through mapping, sampling, and inspection of northern central benches workings

Target refinement improves by integrating geochemical and/or geophysical results within a GIS workflow to Dike-rich corridor, abundant float/subcrop potential

Outputs: ranked target zones for follow-up programs (trenching and/or drill planning subject to access/permits)

Near-term value catalyst is rapid target definition focusing on the same on the same carbonatite geological system as adjacent USCM land position

Why This Project Has Significant Upside



STIBNITE RIDGE PROSPECT **Antimony & Silver**

- Rapid Field Validation Program
 - Targeting focuses on structures associated with the known mineralized systems and geological structures
 - Systematic Rock & Soil Geochemistry and prioritise high-confidence targets.
 - Structural Target Refinement & GIS Integration
 - Advance to Drill-Ready Targets to define and rank ALL priority zones
-

RADIX SHEEP CREEK PROJECT **REE & Gallium**

Transaction Terms & Capital Raising

Radix REE & Ga Project — Montana, USA	
Staking	OM1 directly staked this project via their USA subsidiary Earth Elements LLC

Thompson Falls Antimony Project — Montana, USA	
Structure	Binding heads of agreement (HoA) to acquire 100% of American Antimony Metals LLC (AAL)
Vendor	Mr Rajan Rai
Consideration	25,000,000 OM1 Shares to Mr Rai or nominees at settlement — subject to shareholder approval
Conditions precedent	Satisfactory due diligence on AAL and its assets · No breach of vendor warranties · Regulatory and shareholder approvals · All required third-party consents
Sunset period	All conditions precedent to be satisfied within 4 months of execution

Capital Raising	
Total raise	A\$1,000,000 (before costs)
Issue price	A\$0.02 per share
Total shares	50,000,000 shares to professional and sophisticated investors issued in one tranche under existing placement capacity (ASX Listing Rules 7.1 and 7.1A)
Lead manager	GTT Ventures Pty Ltd (ACN 601 029 636)
Lead manager fees	6% cash fee on placement proceeds + 10,000,000 OM1O Options exercisable at \$0.025 on or before 21 March 2028 (subject to shareholder approval under Listing Rule 7.1)

Directors and Management



CHRIS ZIELINSKI
Non-Executive Director



PATRIC GLOVAC
Executive Director



QUINTON MEYERS
Non-Executive Director & Company Secretary

EXPLORATION TEAM

Graham Peterson
Senior Geologist – USA Operations

"Graham's technical credentials, on-ground U.S. experience and industry relationships will be highly accretive as we accelerate exploration."

— **Patrick Glovac, Executive Director**

Technical Capability

Extensive hard-rock and critical minerals exploration across the western United States.

Multiple drilling programs managed across precious metals and critical minerals projects.

Deep familiarity with U.S. regulatory, permitting and operating environments.

Project Focus

Stibnite Ridge Sb-Ag Project
Field programs, target maturation, drill design toward resource definition.

Radix REE-Ga Sheep Creek Project
Geological mapping, sampling and target prioritisation programs.

Additional advanced-stage opportunities currently under review.

Scope of Role

Target generation, mapping and sampling.

Drill program design and supervision.

Integration of historical datasets with modern exploration techniques.

Cross-jurisdictional technical insight via concurrent SQX role.



OMNIA
METALS GROUP LTD

CONTACT US



+61 08 9388 0051



info@omniametals.com.au



www.omniametals.com.au



22 Townshend Road
Subiaco WA 6008

