



RUMBLE
RESOURCES LTD

NEAR TERM

GOLD PRODUCTION

& EXPLORATION UPSIDE

MULTI-COMMODITY

EXPOSURE

Peter Harold MD & CEO
Ignite Investment Summit Hong Kong
16 April 2026

ASX:RTR

This presentation has been prepared by Rumble Resources Limited (Rumble or the Company). It contains general information about the Company's activities current as at the date of the presentation. The information is provided in summary form and does not purport to be complete. This presentation is not to be distributed (nor taken to have been distributed) to any persons in any jurisdictions to whom an offer or solicitation to buy shares in the Company would be unlawful. Any recipient of the presentation should observe any such restrictions on the distribution of this presentation and warrants to the Company that the receipt of the presentation is not unlawful. It should not be considered as an offer or invitation to subscribe for or purchase any securities in the Company or as an inducement to make an offer or invitation with respect to those securities. No agreement to subscribe for securities in the Company will be entered into on the basis of this presentation or any information, opinions or conclusions expressed in the course of this presentation. This presentation is not a prospectus, product disclosure document or other offering document under Australian law or under any other law. It has been prepared for information purposes only. This presentation contains general summary information and does not take into account the investment objectives, financial situation and particular needs of any individual investor. It is not financial product advice and investors should obtain their own independent advice from qualified financial advisors having regard to their objectives, financial situation and needs. Rumble nor any of their related bodies corporate is licensed to provide financial product advice.

This presentation and information, opinions or conclusions expressed in the course of this presentation contains forecasts and forward-looking information. Such forecasts, projections and information are not a guarantee of future performance, involve unknown risks and uncertainties. Actual results and developments will almost certainly differ materially from those expressed or implied. There are a number of risks, both specific to Rumble, and of a general nature which may affect the future operating and financial performance of Rumble, and the value of an investment in Rumble including and not limited to title risk, renewal risk, economic conditions, stock market fluctuations, manganese demand and price movements, timing of access to infrastructure, timing of environmental approvals, regulatory risks, operational risks, reliance on key personnel, reserve estimations, native title risks, foreign currency fluctuations, and mining development, construction and commissioning risk.

You should not act or refrain from acting in reliance on this presentation, or any information, opinions or conclusions expressed in the course of this presentation. This presentation does not purport to be all inclusive or to contain all information which its recipients may require in order to make an informed assessment of the prospects of Rumble. You should conduct your own investigation and perform your own analysis in order to satisfy yourself as to the accuracy and completeness of the information, statements and opinions contained in this presentation before making any investment decision. Recipients of this presentation must undertake their own due diligence and make their own assumptions in respect of the information contained in this presentation and should obtain independent professional advice before any decision based on the information. No representation or warranty, express or implied, is made in relation to the fairness, accuracy or completeness of the information, opinions and conclusions expressed in the course of this presentation. To the maximum extent permitted by law, no representation, warranty or undertaking, express or implied, is made and, to the maximum extent permitted by law, no responsibility or liability is accepted by the Company or any of its officers, employees, agents or consultant or any other person as to the adequacy, accuracy, completeness or reasonableness of the information in this presentation. To the maximum extent permitted by law, no responsibility for any errors or omissions from this presentation whether arising out of negligence or otherwise is accepted. An investment in the shares of the Company is to be considered highly speculative.

The exploration targets or conceptual exploration targets in this presentation or expressed during the course of this presentation are subject to completion of the necessary feasibility studies, permitting and execution of all necessary infrastructure agreements. This presentation and information, opinions or conclusions expressed in the course of this presentation should be read in conjunction with Rumble's other periodic and continuous disclosure announcements lodged with the ASX, which are available on the Rumble website. They involve risk and uncertainties that could cause actual results to differ from estimated results. Forward-looking statements include, but are not limited to, statements concerning the Company's exploration programs, outlook and target sizes. They include statements preceded by words such as "potential", "target", "scheduled", "planned", "estimate", "possible", "future", "prospective" and similar expressions.

COMPETENT PERSON STATEMENT

The Exploration Results referenced in this presentation were first announced by the Company in accordance with ASX Listing Rule 5.7 in its announcements dated 11 August 2025, 23 July 2023, 16 April 2025, 4 April 2025, 17 February 2025, 11 December 2024, 28 November 2024, 15 October 2024, 2 September 2024, 6 August 2024, 16 July 2024, 13 March 2024, 21 February 2024, 14 November 2023, 31 October 2023, 24 October 2023, 5th October 2023, 17 July 2023, 19 April 2023, 14 March 2023, 16 February 2023, 17 November 2022, 3 November 2022, 29 September 2022, 30 August 2022, 23 August 2022, 18 July 2022, 26 May 2022, 9 March 2022, 21 February 2022, 7 February 2022, 31 January 2022, 21 December 2021, 13 December 2021, 18 November 2021, 10 November 2021, 18 October 2021, 8 July 2021, 2 June 2021, 19 April 2021, 23 February 2021, 17 February 2021, 15 February 2021, 3 February 2021, 28 January 2021, 4 November 2020, 6 October 2020, 20 May 2020, 4 May 2020, 24 April 2020, 17 February 2020, 11 February 2020, 23 January 2020, 26 November 2019, 8 November 2019, 21 November 2019, 21 October 2019, 1 October 2019, 23 August 2019, 22 August 2019, 6 August 2019, 11 July 2019, 1 July 2019, 4 April 2019, 12 March 2019, 12 February 2019, 6 February 2019, 17 December 2018, 27 November 2018, 30 August 2018 and 9 August 2018.

The Updated Mineral Resource Estimate (MRE) for the Western Queen Project referenced in this presentation was announced by the Company in accordance with ASX Listing Rule 5.8 on 23 July 2025 the previous MRE for Western Queen was announced 15 October 2024. The Mineral Resource estimate for the Earacheedy Project referenced in this presentation was first announced by the Company in accordance with ASX Listing Rule 5.8 in its announcement dated 19 April 2023. Rumble is not aware of any new information or data that materially affects the information included in the relevant market announcements described above and, in the case of the Mineral Resource estimate, that all material assumptions and technical parameters underpinning the estimate in the relevant market announcement continue to apply and have not materially changed.

VISION AND MISSION

Rumble is an Australian resources company, delivering value and growth through resource discoveries and project development in Western Australia.

Our aim is to provide shareholders with capital growth and dividend streams by identifying and developing mineral assets. Our immediate focus is generating near-term cashflow from Western Queen to internally fund further resource growth and to fund our other exploration projects.

CORPORATE OVERVIEW

~\$0.044

SHARE PRICE (13 April 2026)

~\$60M

MARKET CAP

21.5M

OPTIONS¹

~1,327M

SHARES ON ISSUE

~\$5.6M

CASH & EQUIVALENTS³

10M

PERFORMANCE RIGHTS²

ASX:RTR

TICKER

~\$55M

ENTERPRISE VALUE

Notes:

1. Directors & Executives – at various strike prices
2. MD/CEO
3. As at 31 Dec 2025



SHAREHOLDER COMPOSITION

BOARD AND MANAGEMENT ~5%

TOP 20 ~34%

BOARD OF DIRECTORS

PETER HAROLD
Managing Director & CEO

PETER VENN
Technical Director

GEOFF JONES
Non-Executive Chairman

MICHAEL SMITH
Non-Executive Director

MATTHEW BANKS
Non-Executive Director

MANAGEMENT

BRETT KEILLOR
Technical Consultant

SIMON DAVIES
Exploration Manager

TREVOR HART
Chief Financial Officer
& Joint Company Secretary



RESEARCH

MICHAEL BENTLEY



WHY INVEST IN RUMBLE?

WESTERN QUEEN – Gold & Tungsten

- ✓ **Near term cashflow from high-grade gold & tungsten**
- ✓ **Resource growth already & potential to increase**
 - Oct 2024 - from 163koz to 287koz Au¹
 - July 2025 - from 287koz to **370koz Au²**
 - **Nov 2025 – WQ South Scoping Study released**
 - **Current drill program has extended WQS down plunge, more high-grade at WQC below old workings**
- ✓ **On track to commence gold production in 2027**
- ✓ **Tungsten**
 - Maiden resource of 13.2kt WO₃³
 - Met testwork confirms 48% WO₃ conc. at 45% rec.⁴
 - Near term tungsten concentrate revenue stream

Earaheedy - Base Metals & Silver

- ✓ **Maiden JORC MRE 2.2Mt Zn, 0.7Mt Pb & 12.6Moz Ag⁵**

Other Projects – Gold & Cu, Zn, Ag



¹ Refer Company ASX release dated 15 October 2024

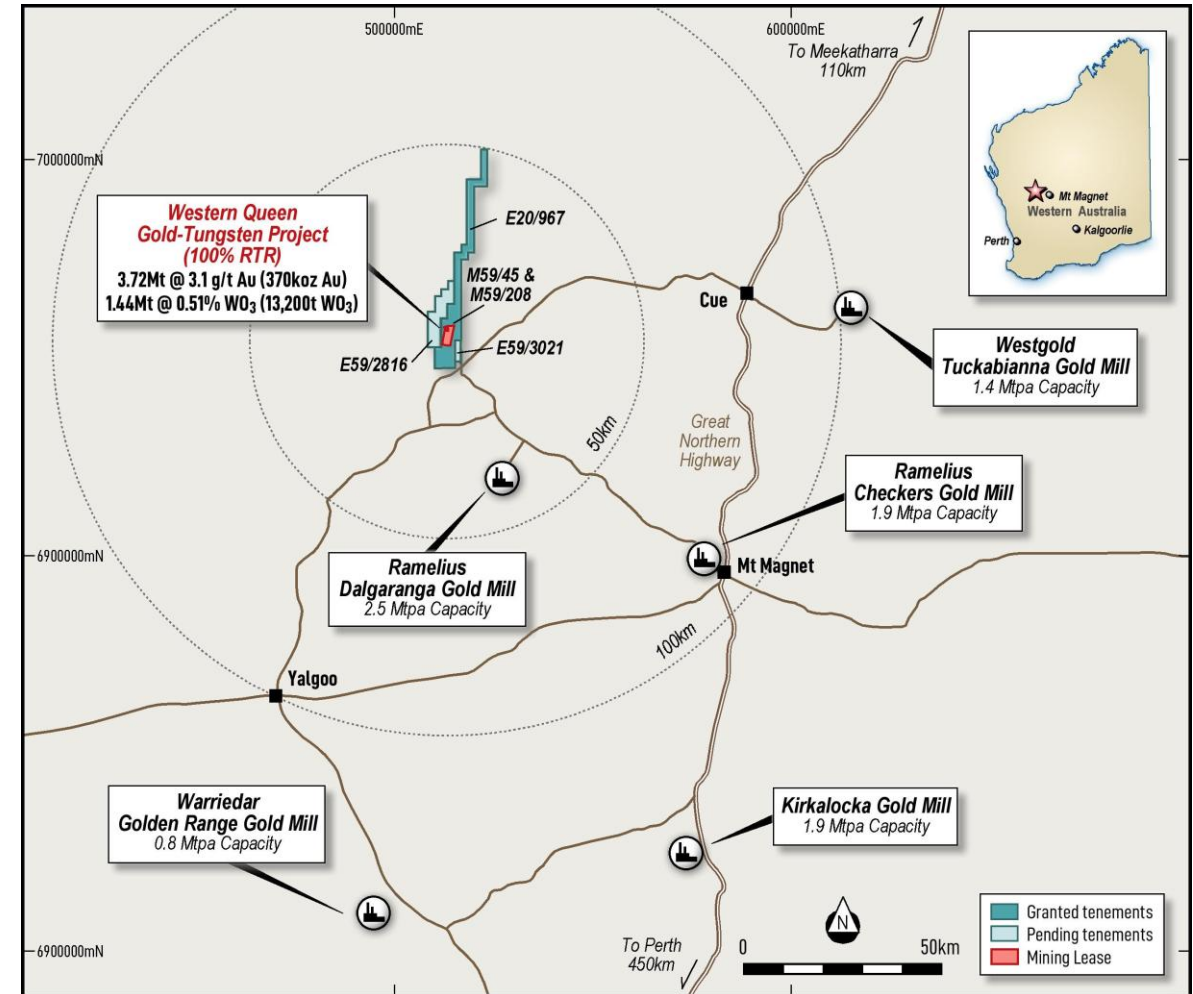
² Refer Company ASX Release dated 23 July 2025

³ Refer Company ASX Release dated 11 August 2025

⁴ Refer Company ASX Release dated 25 March 2026

⁵ Refer Company ASX release dated 19 April 2023

- **Mineral Resource - 3.72Mt @ 3.1g/t Au for 370,000oz¹**
- **Historical production – 880kt @ 7.6g/t Au for 215koz**
- **Near-term production – WQ South Scoping Study confirms quick start, very low capex, extremely robust economics and huge upside**
- **Well located – 200km radius of 5 gold plants, on granted mining leases, MoU with Gylden to process at their Kirkalocka plant (180km)**
- **Geology – The Western Queen deposits are associated with a major orogenic shear zone that remains largely untested along strike and at depth**
- **Possible Analogy – Spartan/Ramelius Never Never & Pepper lodes which are 7.76Mt @ 9.32g/t Au for 2.32Moz² to a vertical depth of 1,000m**
- **Tungsten – Maiden tungsten resource 13.2kt WO₃³**



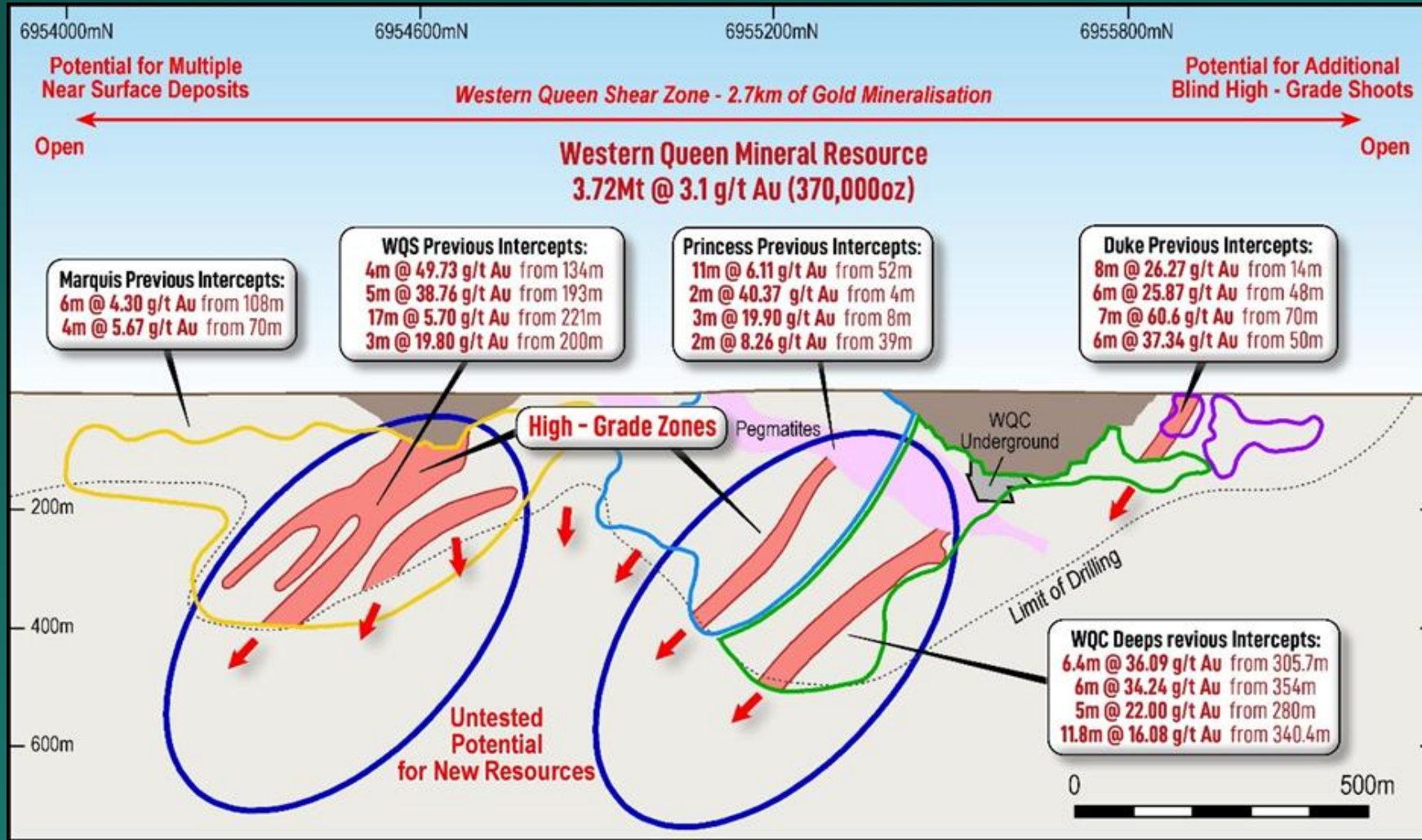
Location Plan of the Western Queen Gold Project

¹. Refer Company ASX release dated 23 July 2025

². Refer Ramelius Resources ASX release Noosa Mining Conference Presentation 24 July 2025 page 38

³. Refer Company Release dated 11 August 2025

WESTERN QUEEN – GLOBAL RESOURCE GRADE OF 3.1G/T



Western Queen Gold Deposit Longitudinal Section – Highlighting Previous Production, Resources and Potential New Resource Areas

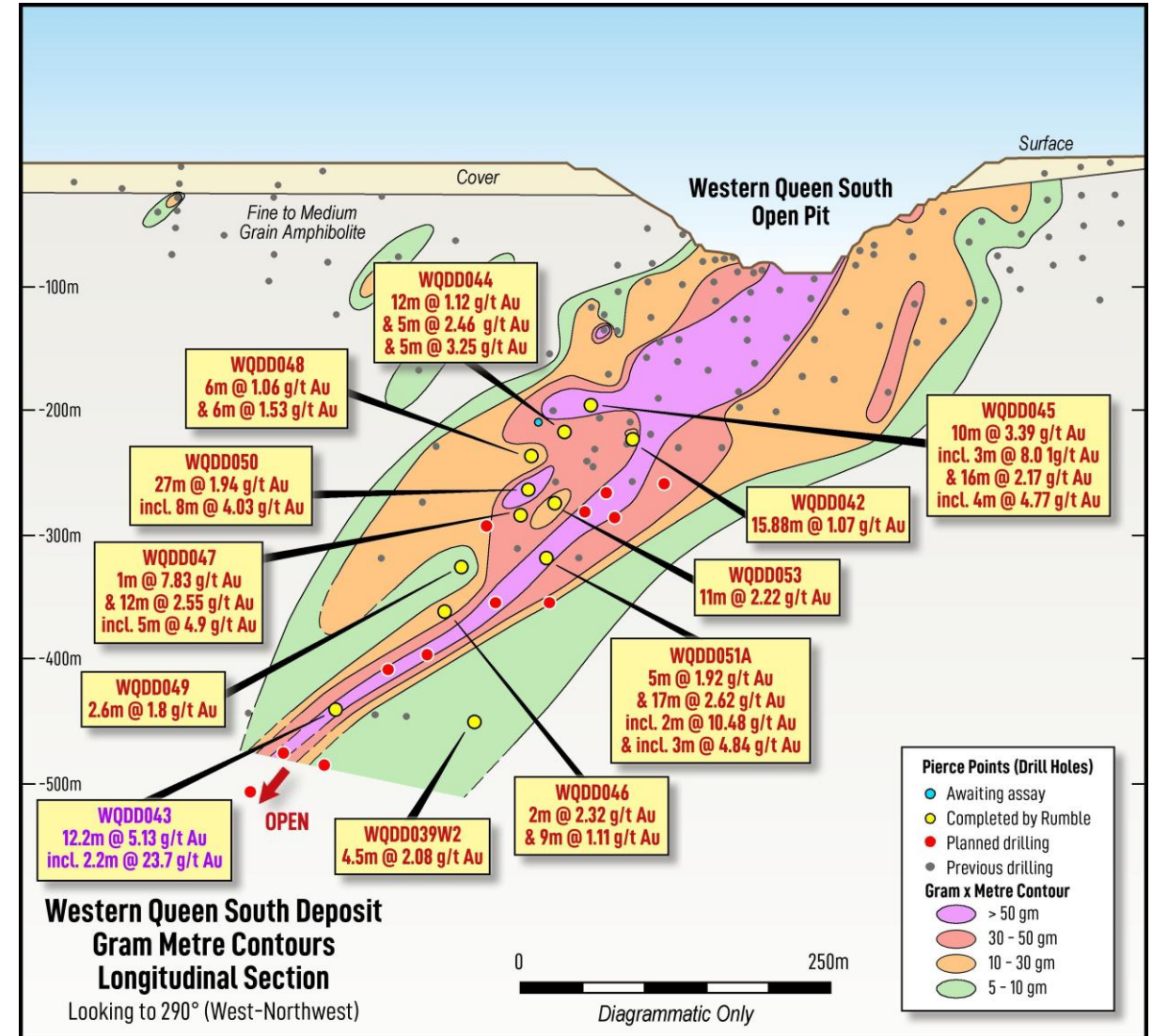
WQ South

- Red holes = 25m x 25m infill drilling & down plunge extensional drilling
- Proposed extensional drilling aims to follow up the deepest intercept in WQDD043 testing the Never Never Analogy

Best intersections from current program¹ & ²

Extensional & Infill

- 12.2m @ 5.13g/t from 456m (WQDD043) including 2.2m @ 23.70g/t from 466m
- 22.7m @ 2.84g/t Au from 203.3m (WQDD033) including 7.2m @ 6.00g/t Au from 213.8m
- 11m @ 3.00g/t Au from 247m (WQDD034) including 4m @ 6.70g/t Au from 247m
- 12m @ 3.40g/t Au from 283m (WQDD036) including 3m @ 7.03g/t Au from 288m
- 11m @ 3.99g/t Au from 284m (WQDD037) including 5m @ 6.99g/t Au from 286m
- 6m @ 5.05g/t Au from 242m (WQDD041)



1. Refer Company ASX release dated 14 January 2026
2. Refer Company ASX release dated 12 February 2026

WQ Central

- Red holes = 25m x 25m infill drilling and down plunge extensional drilling
- Proposed extensional drilling aims to extend mineralisation

Best intersections from current program

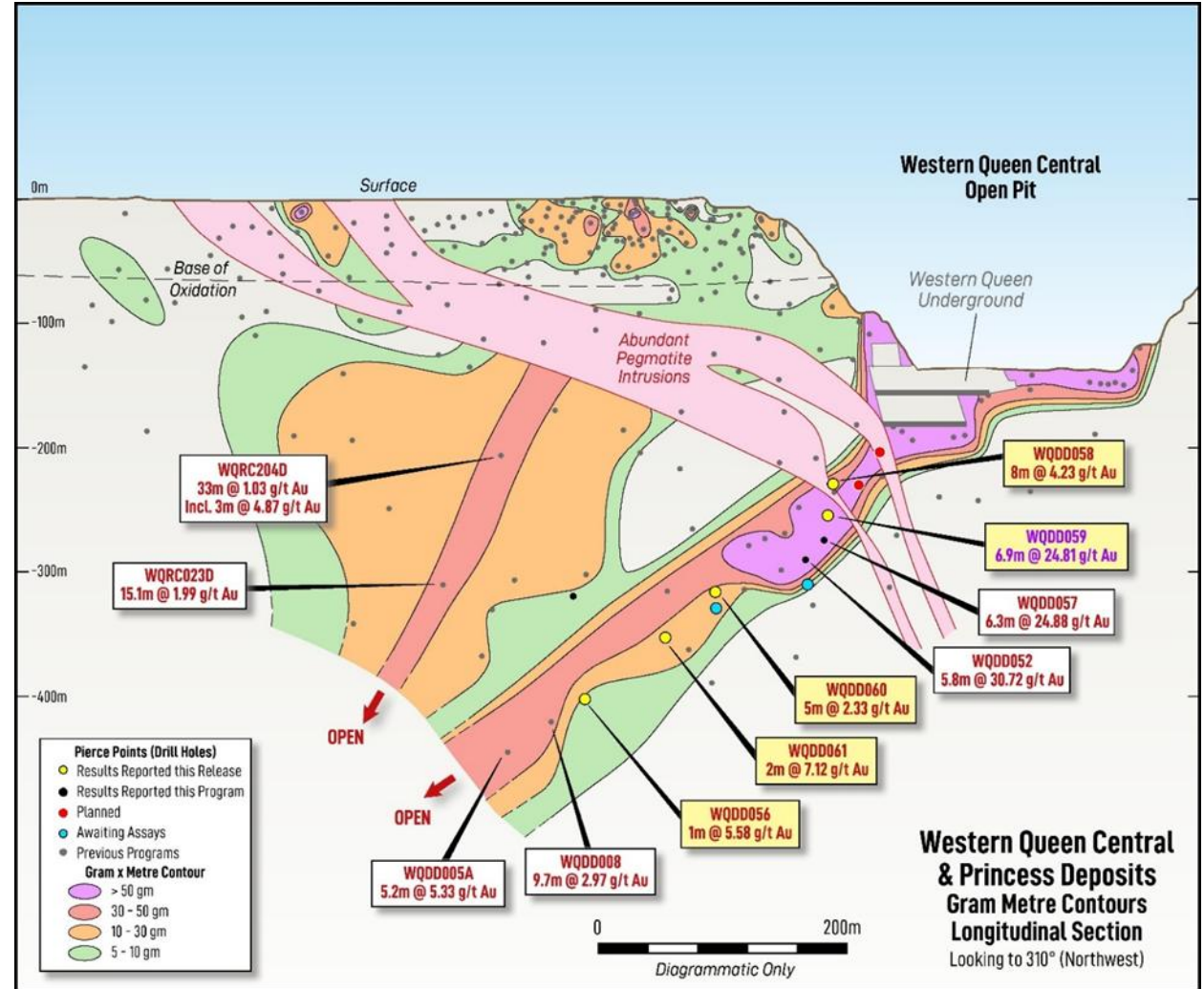
Infill

- 5.8m @ 30.72g/t Au from 315m (WQDD052)¹
- 6.3m @ 24.88g/t Au from 305m (WQDD057)²
- 6.9m @ 24.81g/t Au from 290m (WQDD059)³

Previous High-grade RC/DDH Drill Intercepts

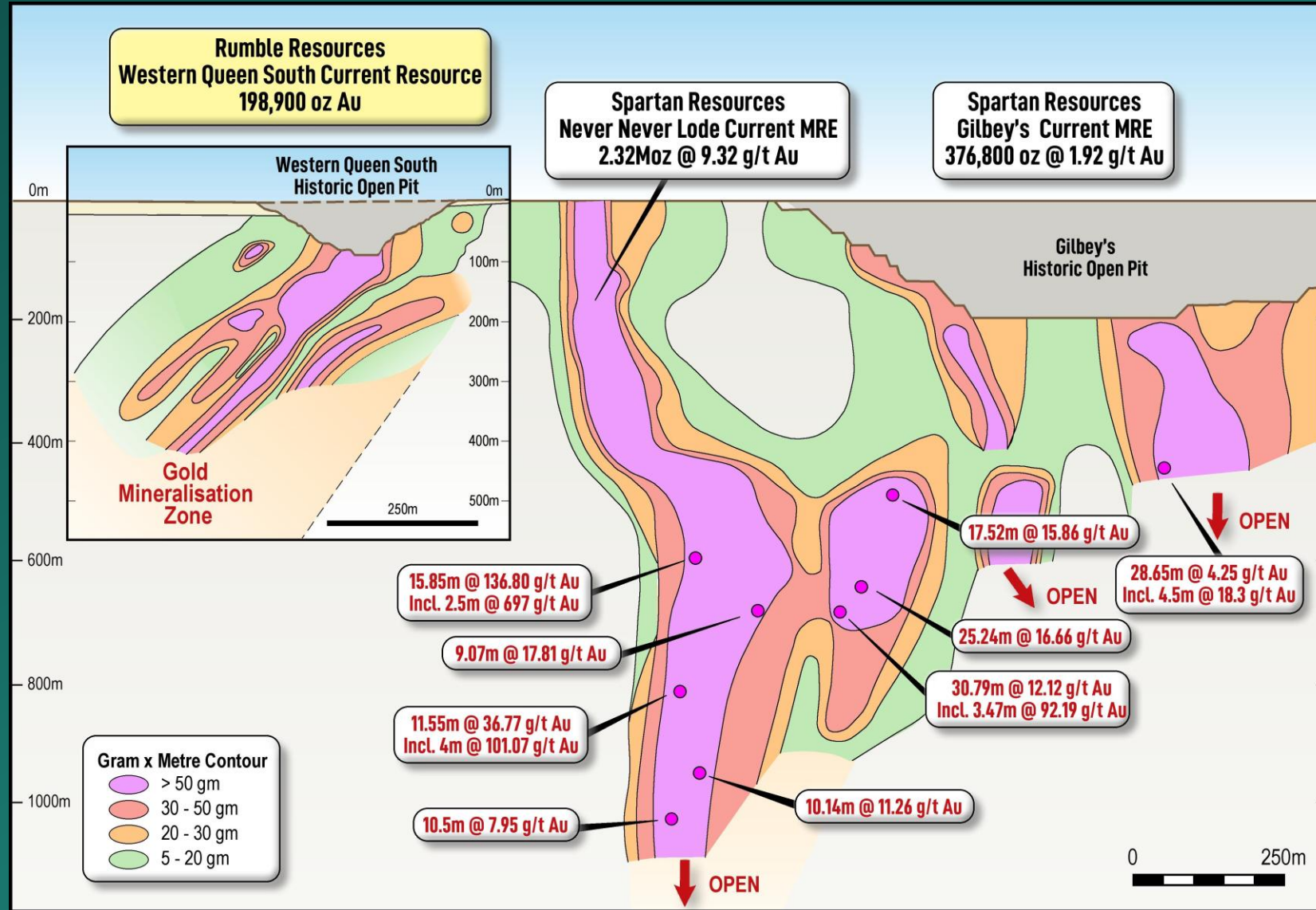
Western Queen Central – Down Plunge^{4,5,6}

- 6.4m @ 36.09 g/t Au from 305.7m (WQD-1072)
- 6m @ 34.24 g/t Au from 354m (WQRC007D)
- 5m @ 22.03 g/t Au from 280m (WQRC150)
- 11.8m @ 16.08 g/t Au from 340.4m (WQD-1089)



1. Refer Company ASX release dated 12 February 2026
2. Refer Company ASX release dated 14 January 2026
3. Refer Company ASX release dated 12 March 2026
4. Refer Company ASX release dated 18 February 2020
5. Refer Company ASX Release dated 4 November 2020
6. Refer Company ASX Release dated 9 June 2020

WESTERN QUEEN – NEVER NEVER COMPARISON



Western Queen South comparison to Spartan/Ramelius Never Never lode (to scale)

Key finding of Western Queen South Study¹

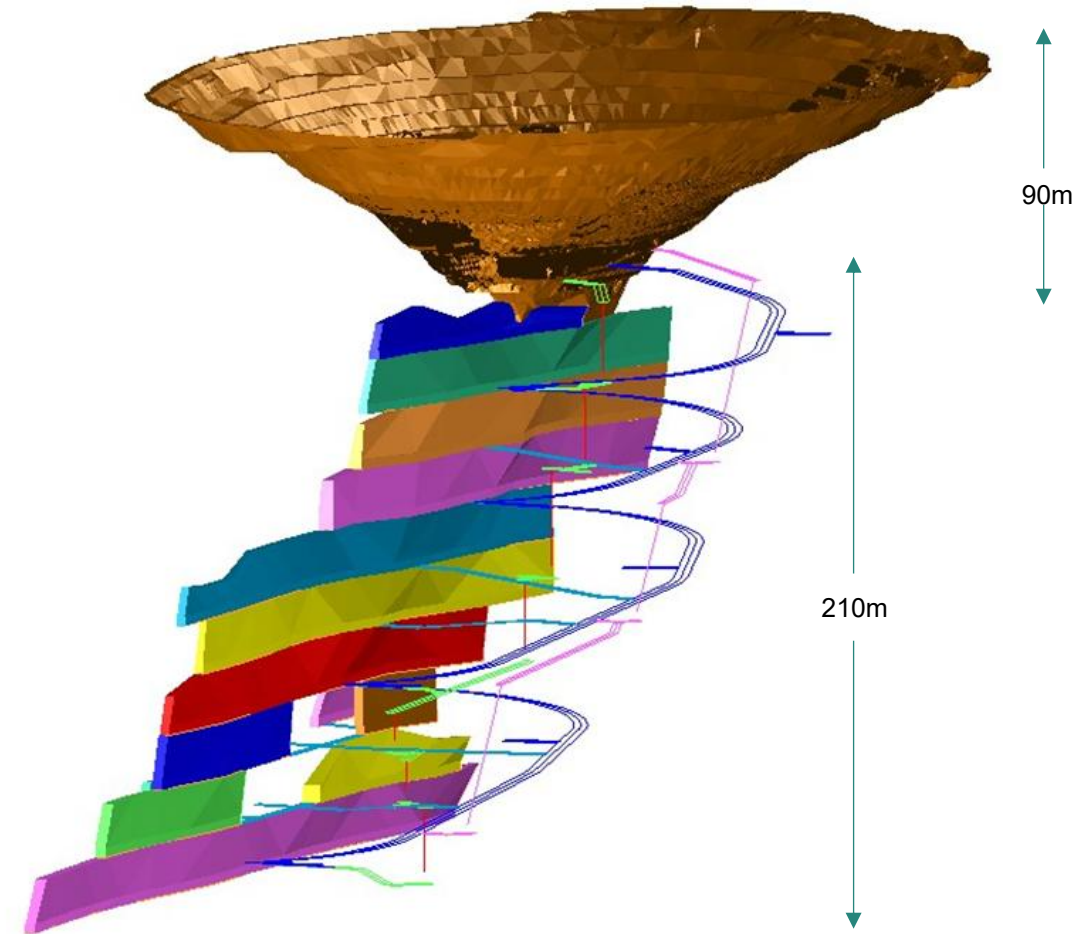
- Production Target – 617kt @ 2.95g/t for 58.5koz Au
- Free Cashflow - \$133M at A\$5,540/oz
- NPV - \$112M at 8% discount rate
- IRR – 370%
- AISC – A\$2,970/oz
- Upfront capex – circa \$10M
- Short start up – 6 months from cutting portal to first ore

Key Assumptions

- Gold price assumption – A\$5,540/oz (spot 8/4/26 A\$6,850/oz)
- Processing – toll treat ore at Kirkalocka, 176km by road
- Metallurgical recovery – 94% (based on previous production & testwork)

Important points

- Simple mine design - steep dip allows uphole stoping
- Small portion of resource - only **29% of WQS Resources** included in study & **none of WQ Central**
- 66% Indicated / 34% Inferred Resources in the mining inventory



Western Queen South underground mine design for 617kt @ 2.95g/t for 58.5koz

¹ Refer Company ASX release dated 27 November 2025

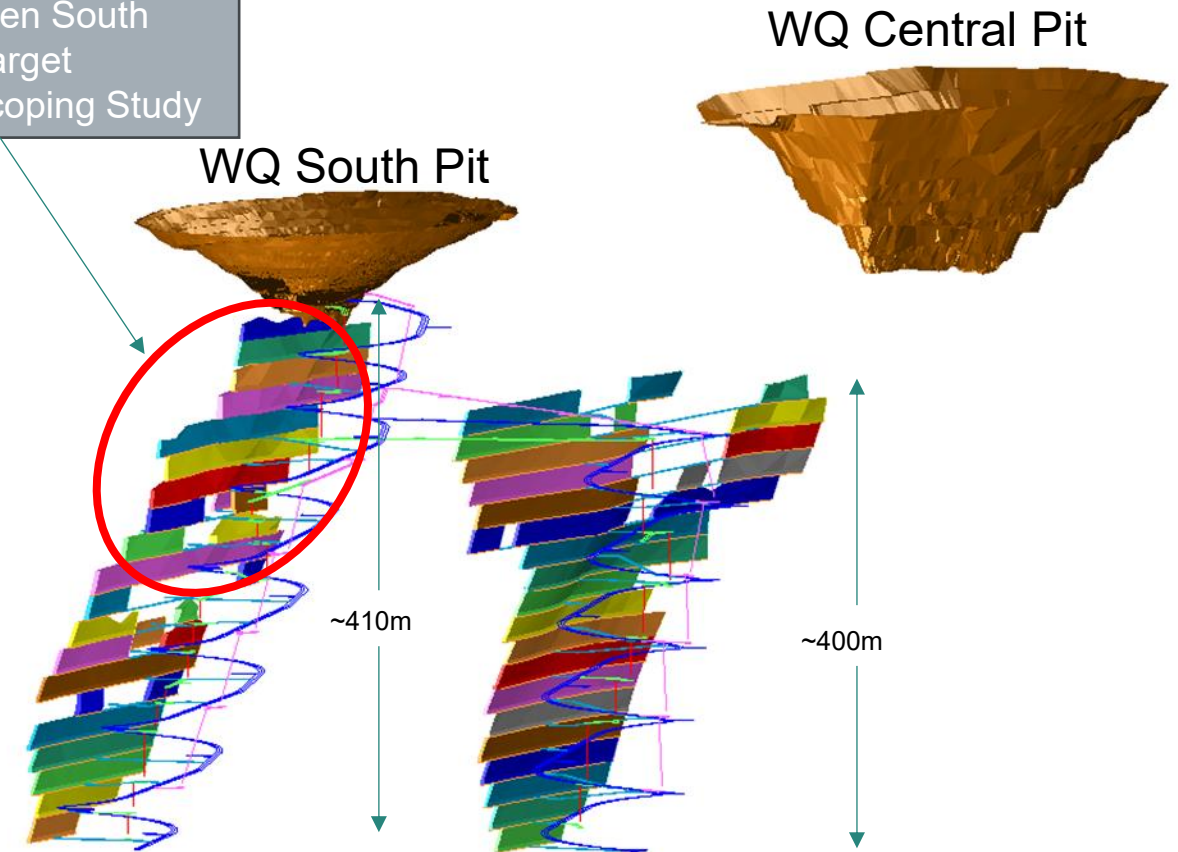
Next Steps

- Obtain all necessary approvals and permits
- Execute ore tolling or ore sale agreement
- Secure project financing/make FID
- Increase Inferred Resources and convert additional resources to Indicated category
- Bring WQ Central & tungsten into mine plan
- **Gold Production – aiming for early 2027**

Upside

- Mine life extensions from:
 - Infill drilling
 - Down plunge extensions to WQ South and Central
 - Discovery of new mineralisation proximal to existing resources
 - New discoveries along the WQ Shear Zone
- **Add Tungsten revenue stream**

Western Queen South
Production Target
27 Nov 25 Scoping Study



Conceptual underground mine design to mine bulk of current WQ South and Central Resources

TUNGSTEN – MAIDEN RESOURCE – 13.2KT WO₃¹

Table 1 – Western Queen August 2025 Tungsten Mineral Resource Estimate (0.1% WO₃ Cut-off)

| Prospect | Inferred Mineral Resource | | |
|--------------|---------------------------|----------------------|----------------------|
| | Tonnage kt | WO ₃ % | WO ₃ t |
| WQC | 790 | 0.27 | 2,200 |
| Princess | 810 | 0.22 | 1,800 |
| WQS | 2,710 | 0.34 | 9,200 |
| Total | 4,310 | 0.31 | 13,200 |

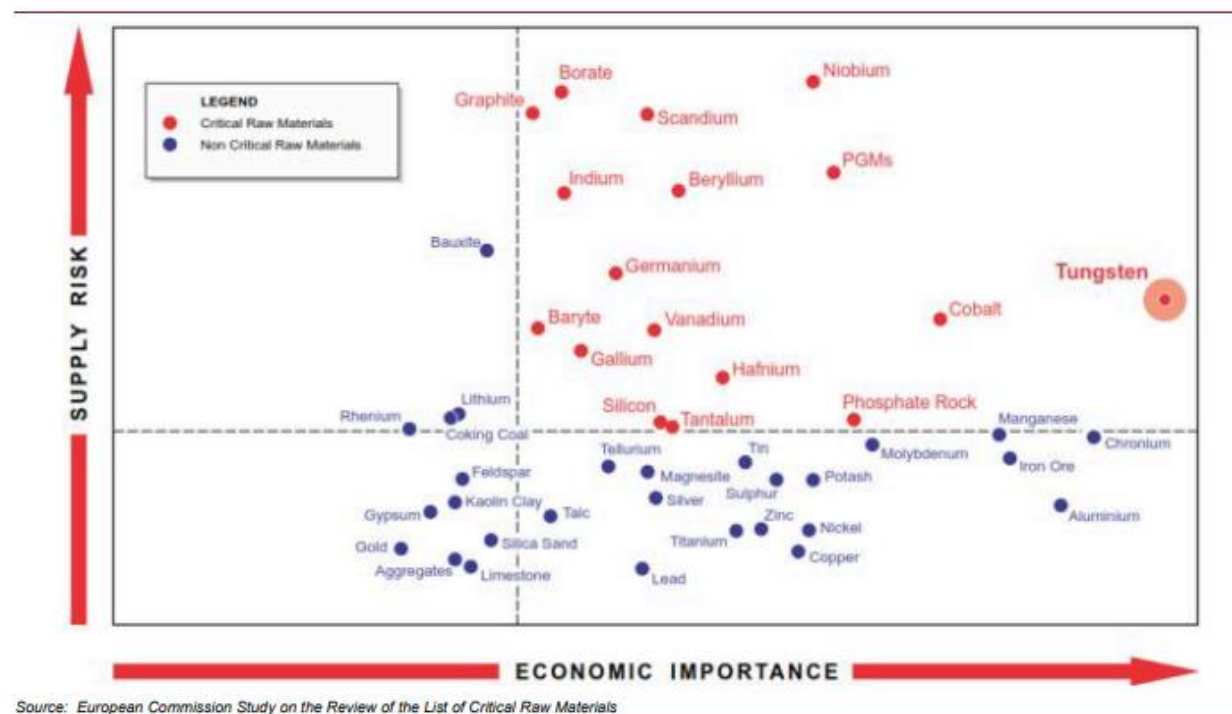
The maiden resource includes open, higher grade zones, which at a 0.3% WO₃ cutoff result in **1.44Mt @ 0.51% WO₃¹**

Totals may differ due to rounding, Mineral Resources reported on a dry in-situ basis.

Western Queen maiden resource compared to Almonty’s Sangdong Resources

Table 1-1. Sangdong – Mineral Resources
As of 28th February, 2025 Note 2

| WO ₃ Cut-Off | Resource Class | Tonnes Kt | WO ₃ % | MoS ₂ % |
|----------------------------|-------------------|--------------|----------------------|-----------------------|
| 0.15% | Indicated | 8,029 | 0.51 | 0.06 |
| | Inferred | 50,686 | 0.43 | 0.05 |



Source: European Commission Study on the Review of the List of Critical Raw Materials

¹ Refer to Company’s ASX Announcement 11 August 2025

² Refer to Almonty Industries Inc. release 3 July 2025

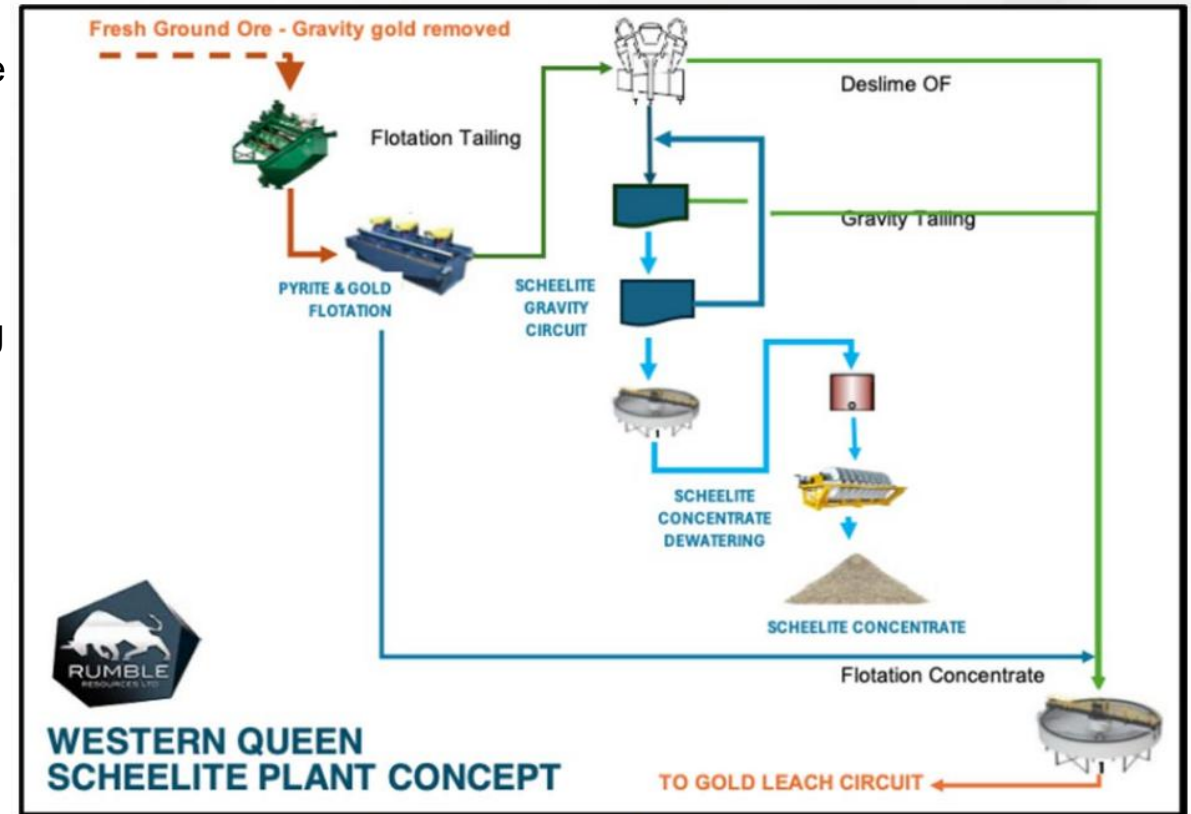
MORE POTENTIAL – TOWARDS TUNGSTEN PRODUCTION

Metallurgical Testwork¹

- Highly marketable WO_3 concentrate with a 48% grade and 45% recovery
- Simple flowsheet that successfully separates both gold and scheelite with minimal losses (<1 %) of gold to the scheelite (WO_3) concentrate
- The scheelite gravity flowsheet can be designed as a simple 'bolt-on' processing facility which could be integrated into an existing gold plant
- Discussions have commenced with mineral processing specialists Sepro with the aim of evaluating modular, low-cost gravity processing equipment for a rapid development option

Next steps

- Further testwork will review a Concept 2 flowsheet to improve recovery
- A scoping study has commenced on mining and processing WO_3 material from Western Queen South which could be mined concurrently with the gold mineralisation
- Continue discussions with potential WO_3 concentrate off-take partners
- **Fast track tungsten production - with global tungsten prices soaring by over 500% in the last year, aim is to fast-track into production to capture this historic market upside**



Maiden Sulphide, pit constrained, inferred Mineral Resource Estimate (MRE)

- **94Mt @ 3.1% Zn+Pb and 4.1g/t Ag (at a 2% Zn+Pb cutoff) for 2.2Mt Zinc, 0.7Mt Lead and 12.6Moz Silver of contained metal**
- Large scale, low-cost open pit mining proposition in premier mining jurisdiction
- One of the largest zinc sulphide discoveries globally over the last decade

Metallurgical testwork confirms

- High recoveries and bulk concentrate spec. (+60% Zn+Pb) suitable for ISP smelters
- HydroFloat™ works – rejects 30% of the waste and should lead to lower plant capex & opex

Project optionality

- The pit constrained MRE hosts a **41Mt higher-grade component** >3% Zn+Pb cut-off

Exceptional resource growth and discovery potential

- Deposits remain open with less than **30%** of the now 70km host Unconformity Unit effectively drill tested
- Excellent potential to locate further **near-surface high grade areas i.e. Mato, Kalitan, Colorado zones**
- **High grade MVT deposit targets** in fertile underlying carbonate formations remain **untested**



¹ refer Company's ASX Announcement 19 April 2023

Thunderstorm - Au

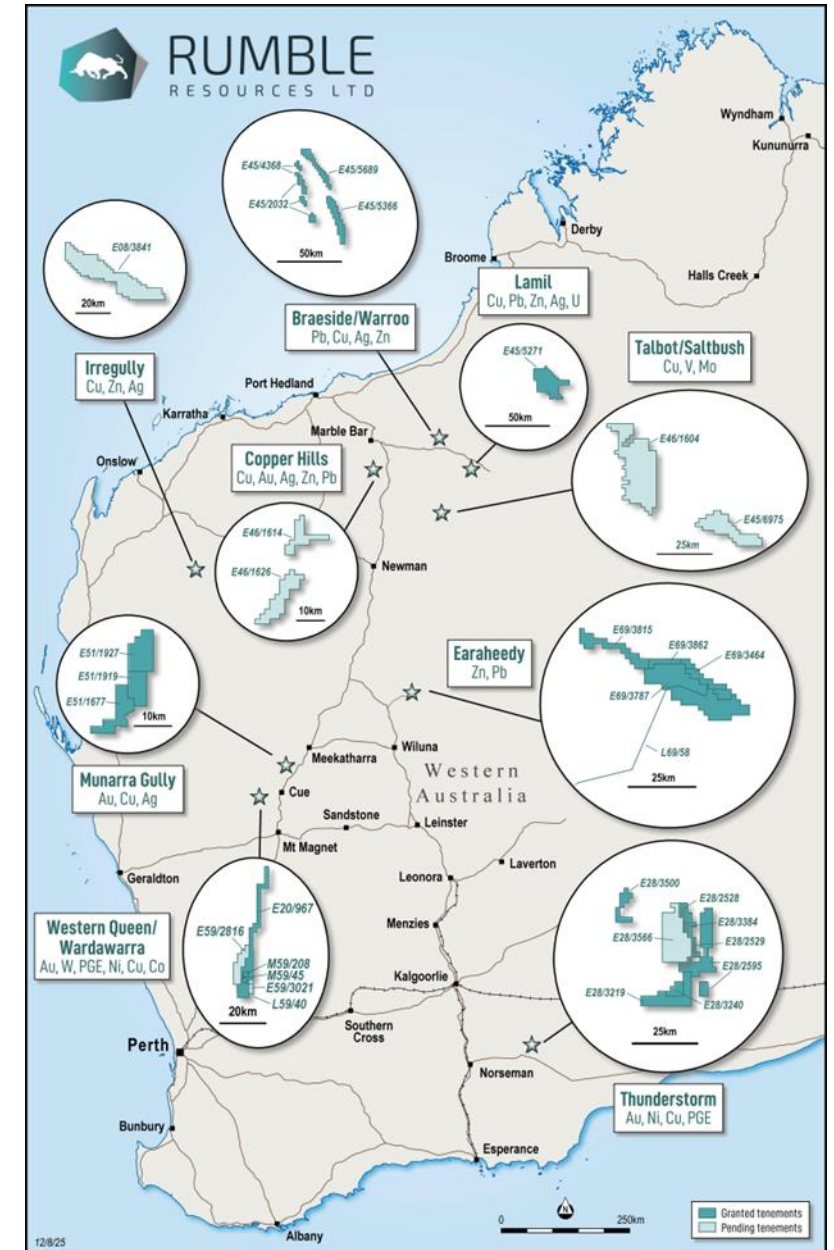
- Potential to host major palaeochannel/basement gold deposits
- Near surface high-grade intersections:
 - **16m @ 6.69g/t Au from 42m**
 - **6m @ 9.15g/t Au from 48m**
- 10,000m aircore and RC drill program being planned for CY26

Earaheedy – Base metals & Ag

- Globally significant Zn-Pb-Ag discovery
- **Maiden Resource 2.2Mt Zn, 0.7Mt Pb & 12.6Moz Ag**
- Looking for a development partner

Other Projects

- Munarra Gully – prospective Au, Cu, Ag drill targets
- Potential Tier 1 precious and base metal targets being generated by exploration team



Acquisition

- Rumble has acquired the remaining 70% from IGO
- 3 tenements – E28/2528, 2595, 2529
- \$300k in Rumble stock & 1.05% NSR

Gazelle Discovery

- Prior wide spaced AC drilling on 1,500m traverses returned high-grade paleo channel gold mineralisation in 2019 including:
 - **16m @ 6.69g/t Au from 42m**
 - **6m @ 9.15g/t Au from 48m**

Pion Discovery

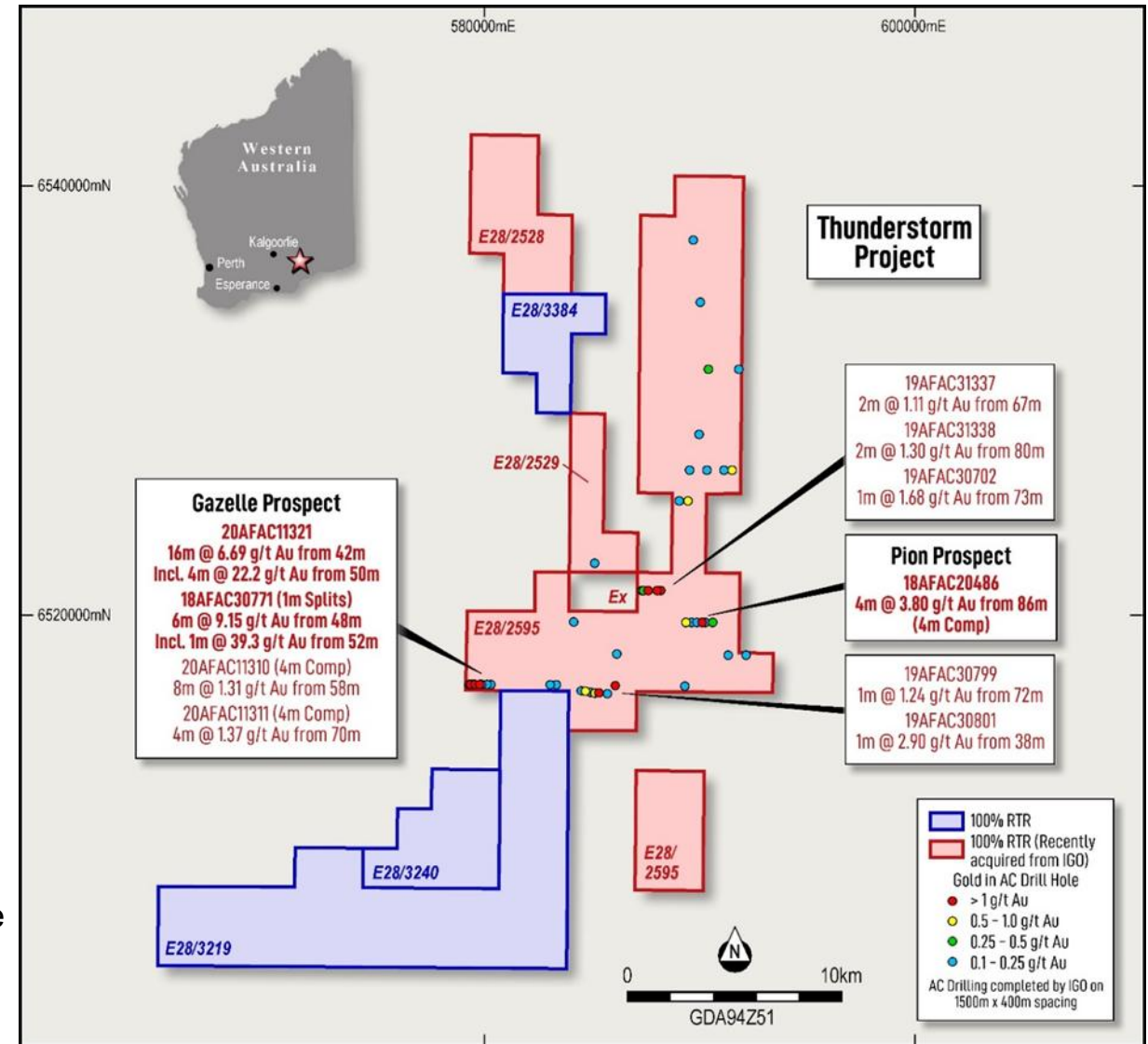
- 4m @ 3.80g/t Au from 86m
- Gold anomalism in 6 holes over 1.2km area

Why we like Thunderstorm

- Gazelle and Pion have similar characteristics to the palaeochannel/placer gold deposits of Higginsville and Kanowna
- Shallow gold mineralisation with high-grade zones at Gazelle point to a potential proximal high-grade basement source

Next steps

- AC infill drill program at Gazelle being planned



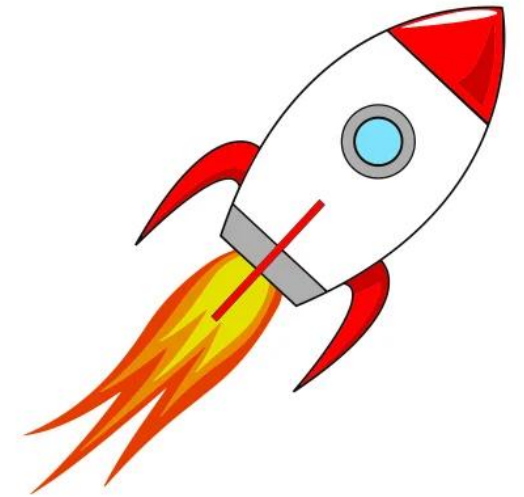
Thunderstorm Project Location & AC Drill Results

¹ Refer Company's ASX Announcement 7 April 2025 – Rumble Acquires 100% of Thunderstorm Gold Project

Catalysts for re-rate of Rumble in 2026



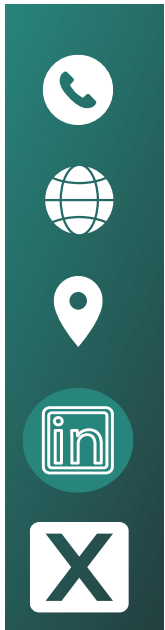
- **Western Queen – Gold and Tungsten**
 - High-grade Au-W intercepts and depth extensions to WQ South & Central
 - Ore tolling agreement executed
 - Approvals received for underground mine
 - Financial Investment Decision & project funding secured
 - Further Au-W Resource upgrades, W scoping study
 - Add WQ Central to Mining Inventory (convert more Inferred to Indicated Resources)
- **Fraser Range**
 - Exploration success
- **Earaheedy**
 - Stronger Zn price
 - Secure a development partner
- **New Investors/Corporate Activity**
 - More Instos on register
 - More buying in the junior gold sector



CONNECT WITH US



Peter Harold
Managing Director & CEO
info@rumbleresources.com.au



+61 8 6555 3980

rumbleresources.com.au

Level 1, 16 Ord Street,
West Perth, WA 6005

[https://www.linkedin.com/company/
rumble-resources-ltd](https://www.linkedin.com/company/rumble-resources-ltd)

[Rumble Resources Ltd \(@RumbleResources\) / X](#)

