

# Greenvale

ENERGY LIMITED

ASX:GRV

**Exploration and growth for  
clean energy and critical  
infrastructure**

RRS Gather Round  
April 2026



# INVESTING IN EXPLORATION

Greenvale is an exploration company committed to building a portfolio of future facing projects that will support the need for clean energy and critical infrastructure

## MINING INDUSTRY LEADERS

An experienced board and management team with a proven track record of making discoveries, growing resources and advancing assets into production.

## WORLD-CLASS OPERATING JURISDICTIONS

Diversified portfolio of high-potential projects, located in world-class mining jurisdictions with the right geological setting.

## FOCUSED EXPLORATION

A clear and disciplined strategy focused on delivering uranium exploration success with prudent capital allocation.

## SUSTAINABLE ENERGY THESIS

Uranium is re-emerging as a critical strategic asset, underpinned by nuclear energy's role in decarbonization and energy security.



# CORPORATE OVERVIEW

Highly experienced team, fully-aligned with shareholders, striving to deliver long-term, sustainable growth

## CAPITAL STRUCTURE

**\$0.038**

Share price  
(@31 March 2026)

**592M**

Shares on Issue

**≈\$22M**

Market Cap  
(Undiluted)

**17 M**

Performance Rights


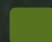

**21.5 M**

Options  
\$0.07 exercise price  
30 Nov 2026 expiry

**≈\$2.8M**

Cash/Cash Equivalent  
(@31 Dec 2025)

## SHAREHOLDERS

Board and Management   
Top 20 (Excl. Board)   
Balance 



## BOARD AND MANAGEMENT



**MR NEIL BIDDLE**  
Chairman

Over 35 years' experience in exploration and mining operations

Founding Director of ASX:PLS

Extensive experience at senior executive and board-level

Demonstrated ability to create significant value for shareholders

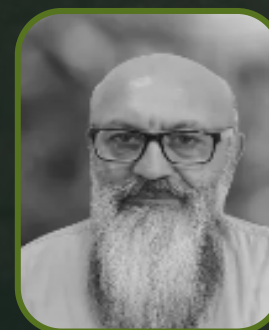


**MR ALEX CHEESEMAN**  
Managing Director

Over 25 years' experience in leadership and operations across exploration and operations

Previous GM/C-level experience with ASX-listed exploration and mining companies

Expertise in project development, capital markets and operations



**MR ELIAS KHOURI**  
NED

Expertise in equity capital markets and corporate finance

Extensive experience in capital raisings and strategic transactions

Experience across major global exchanges including ASX, AIM, TSX, NYSE, NASDAQ and Frankfurt

**MR PETER HARDING-SMITH**  
CFO/CoSec

**MS ASHA RAO**  
Consulting Geologist/CP

**MR SAM MEGHARAJ**  
Metallurgist/Process Engineer

**GREENVALE ENERGY LIMITED**

## DIVERSE PORTFOLIO

Greenvale holds a diversified suite of projects, all located in world-class mining jurisdictions. All projects are aligned to the future facing themes of clean energy and critical infrastructure.

### DOUGLAS RIVER PROJECT

Uranium ~200 km S of Darwin.

Located in the Pine Creek Region, a world-class uranium district hosting Ranger, Jabiluka and Thunderball, large-scale radiometric anomalies identified\*. **Priority 2026 exploration.**

### MILLUNGERA BASIN

Energy ~200 km E of Mt Isa.

Free-carried farm-in underway with ASX:SRL / I-Pulse. Stored thermal energy potential exceeding 611,000 petajoules.

### OASIS PROJECT

Uranium ~250 km W of Townsville.

8,500+ m drilled to date, high-grade results\*, multiple step-out targets identified. **Priority 2026 exploration.**

### ALPHA PROJECT

Bitumen ~450 km W of Rockhampton.

28Mt Resource\*, strategic opportunity for domestic bitumen supply, processing testwork ongoing. **Priority 2026 development studies.**

### ELKEDRA-HENBURY PROJECT

Uranium N and S of Alice Springs.

Different geological settings both known to support uranium mineralization.

# STRUCTURAL SUPPLY DEFICIT

Global exploration and development investment for new uranium supply has failed to keep pace with downstream investment and growth

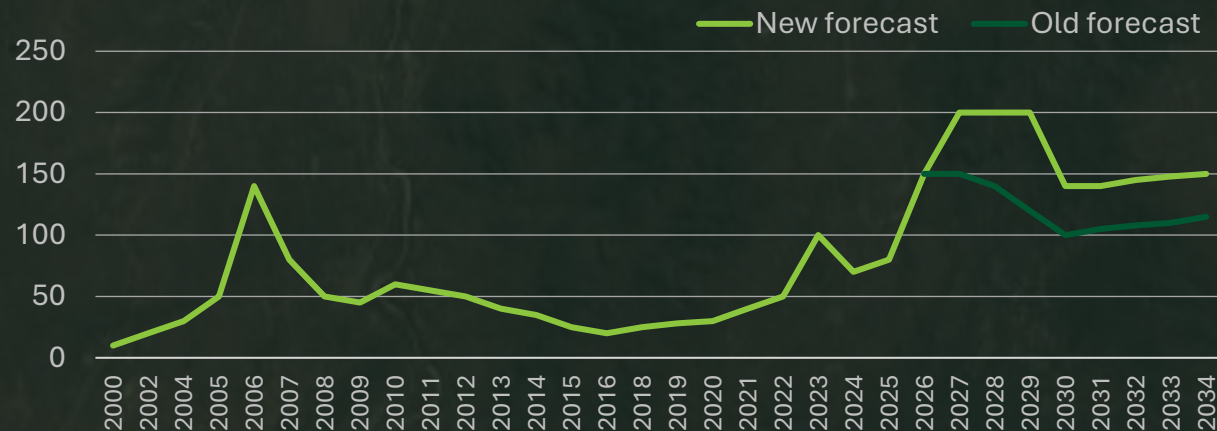
## DEMAND ACCELERATING

- Decarbonisation driving renewed focus on nuclear
- Rapid growth in data centres and AI increasing electricity demand
- Global policy support to triple nuclear capacity by 2050
- Reactor restarts and new builds across the US, China and India
- Emerging technologies expanding long-term demand outlook

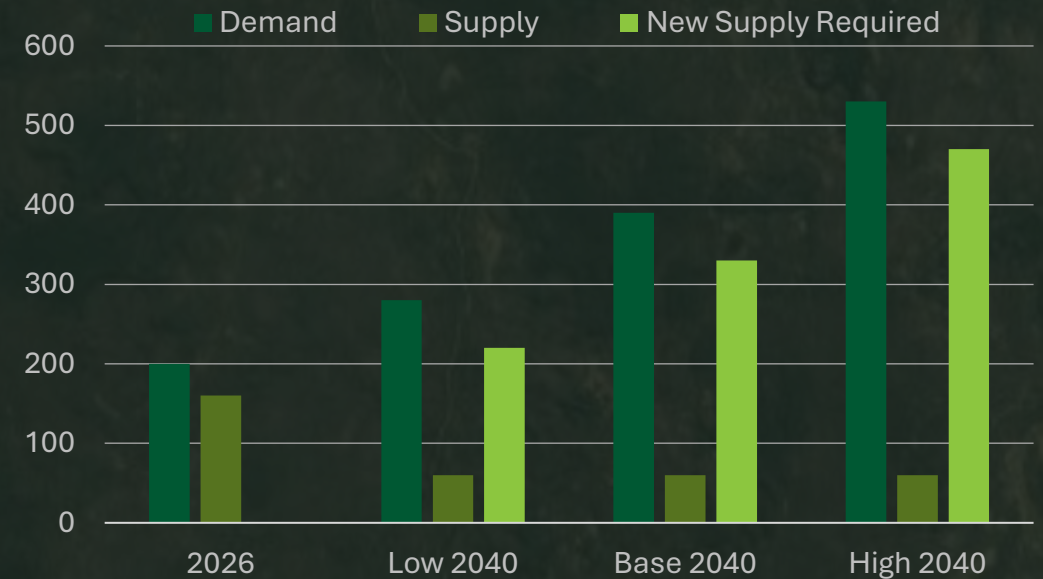
## SUPPLY REMAINS CONSTRAINED

- A decade of underinvestment limiting new supply
- Operational and production challenges seen by current producers
- Structural decline in major producers later this decade
- Increasing geopolitical complexity impacting supply security
- Sustained period of incentive pricing required

## URANIUM PRICE (US\$/lb)



Source: Shaw and Partners



Source: Shaw and Partners

**GREENVALE'S  
PROJECT PIPELINE**



# OASIS PROJECT

Primary exploration focus in 2025 with reconnaissance exploration in June, commencement of drilling in July and results confirming a high-grade deposit with scale potential.

## HIGH-GRADE RESULTS

2025 drilling returned multiple high-grade intercepts, up to 6,929 ppm  $U_3O_8$ \*.

## SCALE POTENTIAL

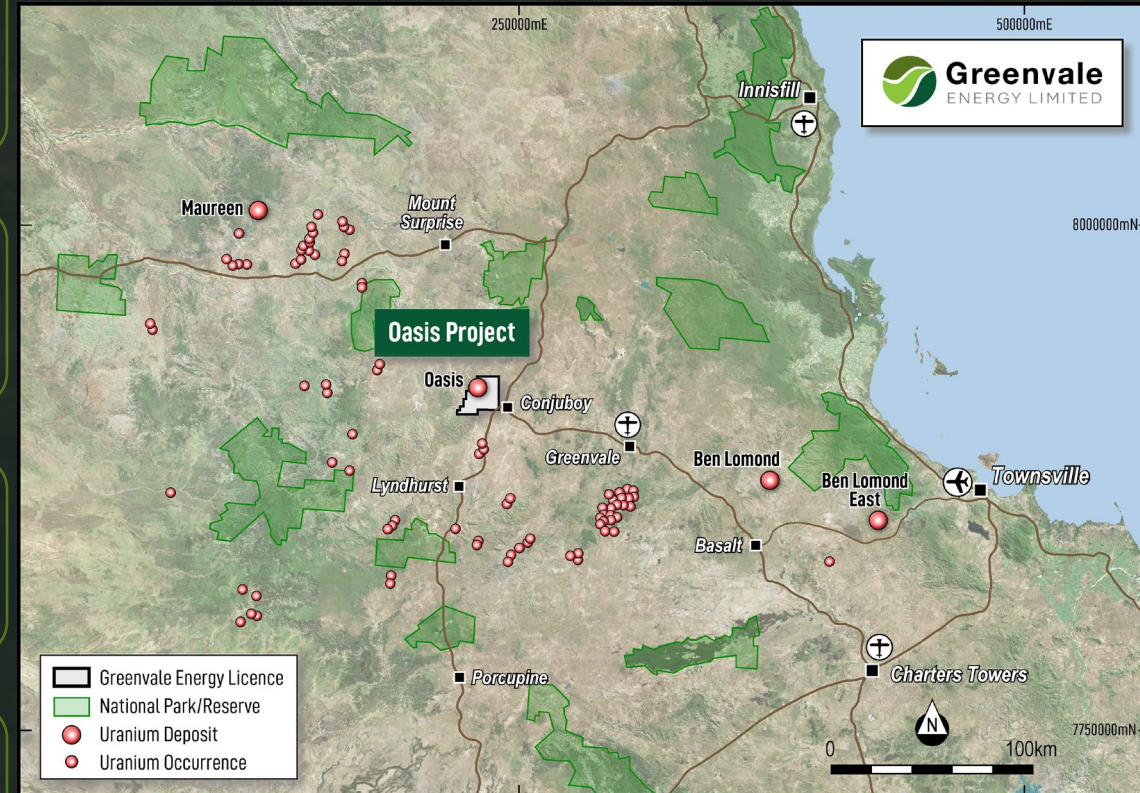
Deposit remains open laterally and at depth. Multiple regional target/geophysical anomalies\* yet to be tested.

## ESTABLISHED INFRASTRUCTURE

Exploration and mining services accessible from Townsville and Charters Towers, camp infrastructure in place, with sealed road access to an operating deepwater port.

## MAXIMUM VALUE

Fully owned project with growth potential, all upside accrues directly to Greenvale shareholders



\* Refer to Exploration/Compliance statement

# OASIS PROJECT

Chemical assays from the 2025 maiden drill program validated historical results and extended the mineralization envelope both laterally and at depth expanding the previous geological model. The Oasis deposit is ready for step-out drill testing and the under-explored regional targets provide the opportunity for greater scale.

## High-Grade Drill Results\*

9m @ 758ppm  $U_3O_8$  from 40m (25GRV001), including 1m @ **1,637ppm  $U_3O_8$**

8m @ **2,125ppm  $U_3O_8$**  from 84m (25GRV002), including 1m @ **6,929ppm  $U_3O_8$**

4.5m @ 801ppm  $U_3O_8$  from 84m (25GRV010), including 1.5m @ **1,685ppm  $U_3O_8$**

8.5m @ 566ppm  $U_3O_8$  from 109m (25GRV008), including 3m @ **1,276ppm  $U_3O_8$**

## Exploration Operations Model Fully Developed

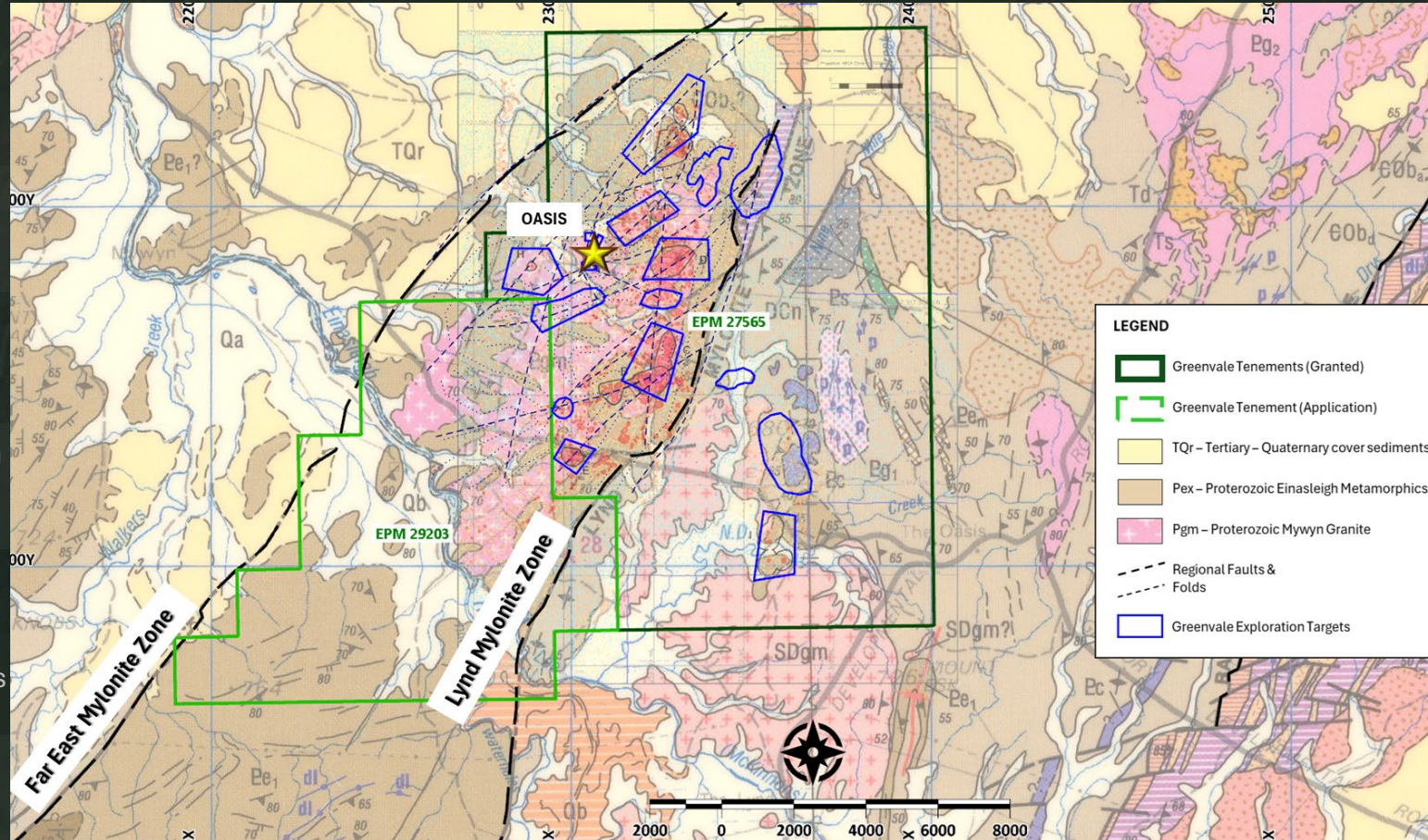
Stakeholder engagement process well established

Support services/infrastructure in location

Strong technical support within the region

Quick and efficient mobilization to site

\* Refer to Exploration/Compliance statement



## Multiple Regional Anomalies Identified\*

Radiometric anomalies correlating with structure

Reconnaissance sampling returned anomalous results along regional trends

Multiple targets identified for ground-truthing

## Growth Potential

Oasis deposit remains open along strike and at depth

Regional targets identified through multiple/concurrent vectoring techniques – ready for ground truthing

Exploration focus is to develop high-confidence drill targets

# OASIS PROJECT

Clear exploration plan – develop regional targets ready for initial drill testing, step-out drill test lateral and depth extensions at the Oasis deposit.

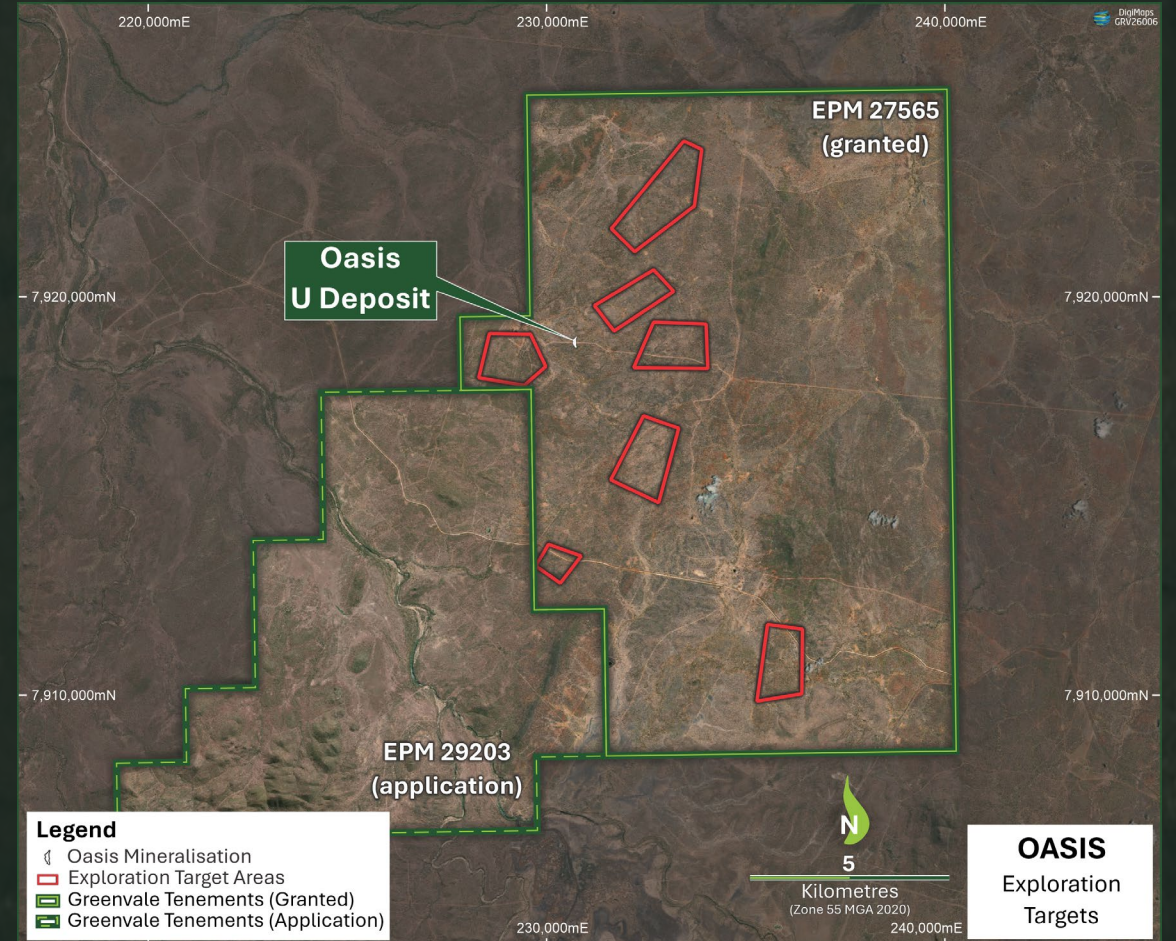
## Forward work plan, priorities and opportunities

**Open Deposit** – Oasis is ready for step-out drill testing lateral extensions and also depth extensions – high-confidence targets identified from trenching completed in late 2025.

**Compelling Regional Targets** – Exploration target areas identified from multiple geophysics and geochemical datasets – quality targets to test.

**Rapid Deployment Potential** – Key operating protocols in place, technical and administrative services ready, clear plan for immediate field work.

**Further Expansion Optionality** – EPM 29203 – along the regional trend of the Lynd Mylonite Zone – no previous exploration or target development – significant greenfield opportunity.



# DOUGLAS RIVER PROJECT

Located within the the world-class Pine Creek Orogen, a region that hosts several significant uranium deposits, including Ranger, Jabiluka and Thunderball.

### WORLD CLASS

The Pine Creek Orogen hosts world-class uranium deposits with both size and grade. More broadly the NT has a global pedigree as a natural resources hub.

### URANIUM DISTRICT

Multiple uranium deposits within the region and a history of uranium mining, bolstered by strong government support for uranium exploration and operations.

### SCALE

A significant (≈1,216km<sup>2</sup>) land position , immediately adjacent to known, high-grade uranium deposits. Scale potential increases the opportunity for discovery.

### UPSIDE POTENTIAL

Limited opportunities to explore in 2025 - Douglas River sits in a mature and highly-endowed province giving rise to discovery success - a high priority for field work in 2026.



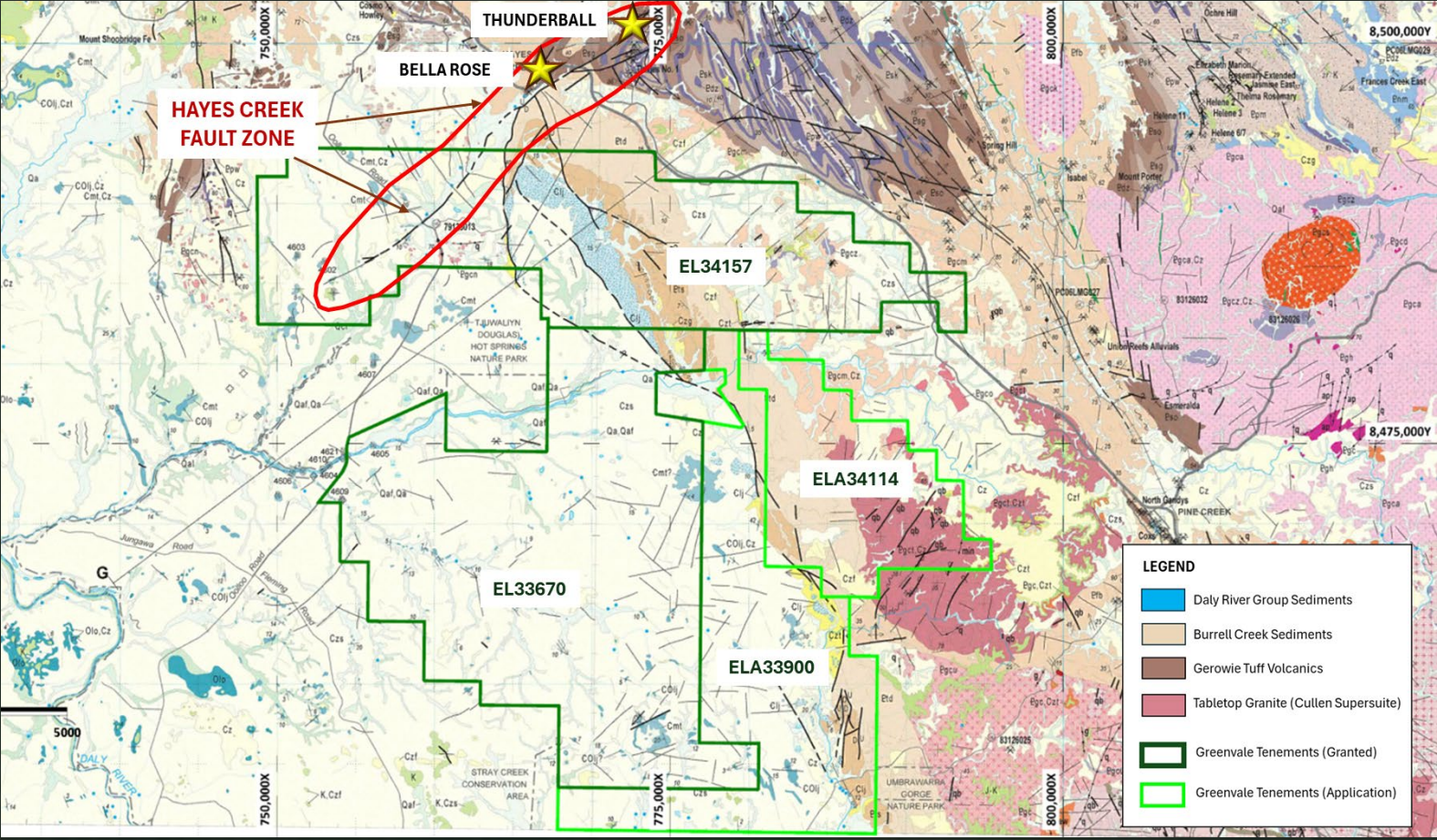
# DOUGLAS RIVER PROJECT

The project area covers prospective stratigraphy and structural corridors considered favorable for unconformity-related uranium, structurally controlled vein-style systems and potential intrusive-related uranium deposits — multiple deposit styles within a single land package

## The Right Geological Setting

The project straddles key stratigraphic contacts including the Cambro-Ordovician Daly Basin (~510–470 Ma), the Mesoproterozoic Birrindudu Basin (~1,600–1,000 Ma), and the underlying Neoproterozoic to Palaeoproterozoic Pine Creek Orogen (~2,800–1,600 Ma).

The Hayes Creek Fault Zone a major NE-SW structural system forms a dominant fluid pathway in the area - evidenced by numerous uranium prospects situated along its trace, including Thunderball and Bella Rose.



## Underexplored in 2025

Protracted application process ongoing for ELA34114 and ELA33900

Exploration in 2025 was limited to airborne and remote techniques

Radiometric anomalies and gas anomalies identified along key regional structures\*

## Priority for exploration in 2026

Granting of EL34157 sets the conditions for field work in the 2026 field season.

Stakeholder engagement has commenced.

Contractors engaged for initial works

\* Refer to Exploration/Compliance statement

# DOUGLAS RIVER PROJECT

Clear exploration plan – infill airborne radiometric and magnetic, ground truth identified anomalies, focus on key regional structure associated with adjacent high-grade uranium mineralization.

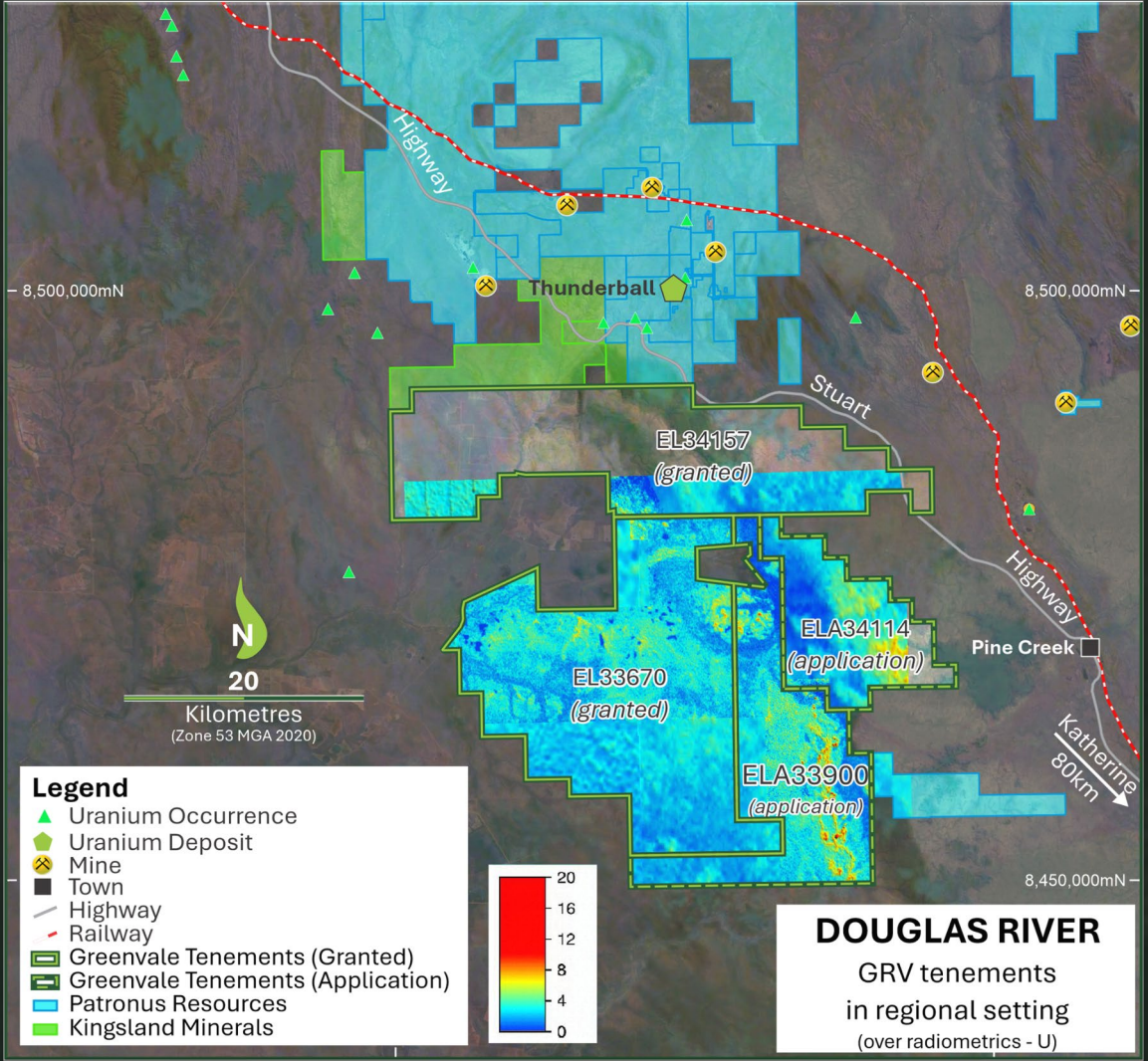
## Forward work plan, priorities and opportunities

**Strong correlation with geophysics** – Airborne radiometric and magnetic to be flown over EL34157, historical exploration in the regional demonstrates strong correlation between geophysical techniques and successful drill testing.

**Cost-effective initial exploration** – field teams, hand held equipment, mapping and sampling to be undertaken on EL34157.

**Continued engagement to unlock more ground** – ELA34114 and ELA33900 procedural matters concluding – potential for determination ahead of the field season.

**Consolidation Potential**– Opportunities being explored to consolidate ground and exploration tenure where the geological setting is conducive to uranium deposition.



# ALPHA PROJECT

A strategic opportunity to address supply chain vulnerability – delivering vertically integrated bitumen Australian roads, ending reliance on complex and costly international supply chains for critical road infrastructure.

## SUPPLY CHAIN INDEPENDENCE

Australia currently imports nearly all of its bitumen through a complex, costly and geopolitically exposed supply chain. Alpha directly addresses this national infrastructure risk.

## SUBSTANTIAL RESOURCE\*

28Mt Inferred Mineral Resource Estimate – providing 27.7 million barrels of synthetic oil equivalent.

## EXTENSIVE PROCESS DEVELOPMENT

Process development has centered on high-pressure liquefaction of torbanite to produce bitumen, bypassing high-off gas pyrolysis processing techniques.

## PRODUCT CERTIFICATION PENDING

Current test program entering final stages, seeking to achieve C-170 certification for Alpha's product



\* Refer to Exploration/Compliance statement

# ALPHA PROJECT

Alpha Test Program 7 continues to advance, with a clear focus of producing a bituminous product that can be independently certified to C-170 specification.

## Project Status

The Alpha Project is located approximately 450 km West of Rockhampton.

Multiple liquefaction test programs have been completed to refine conversion and extraction process to produce a bituminous material.

Test Program 7 (TP7) commenced in May 2025 and was designed to scale operating conditions and produce a bulk sample suitable for third-party certification against the Australian C-170 specification.

TP7 Milestone 1 (equipment procurement, installation and commissioning) experienced significant delays.

TP7 Milestone 2 (scaling TP6 operating conditions and validating performance) was completed in December 2025.

TP7 Milestone 3 (production of bulk sample) was completed in March 2026.

The next phase of TP 7 involves downstream analysis and where applicable product refinement/blending to meet C-170 specification requirements.

Technix of New Zealand are engaged as a specialist bitumen adviser to analyze and where needed modify the TP7 bulk material ahead of product certification.

## Strategic Rationale

Australia imports nearly all of its bitumen, creating supply chain vulnerability.

Roads are treated as critical infrastructure in Australia.

Partnering opportunity for current suppliers seeking local/stable supply.

Industry experts are predicting (and warning) of a 50% increase in bitumen price.

Source: Australian Flexible Pavement Association Industry Statement Global Bitumen Supply Chain Disruption March 2026



12 March 2026

INDUSTRY STATEMENT

## Global Bitumen Supply Chain Disruption: Material and Cost Impacts on Australia's Flexible Pavement Sector

Australian Flexible Pavement Association  
March 2026

The Australian Flexible Pavements Association (AFPA) issues this statement to advise members, road authorities, and industry partners of the supply chain constraints and cost pressures now affecting Australia's road construction and maintenance sector. AFPA monitors the situation closely and will provide updates as conditions develop.

### Bitumen Supply Chain Disruption: Current Position

Disruption to maritime trade through the Strait of Hormuz, one of the world's most critical energy shipping corridors, now delivers direct material consequences for Australia's road construction sector. The strait carries approximately one fifth of global petroleum liquids and a substantial share of global liquefied natural gas. The effective suspension of commercial shipping through this passage has triggered global supply chain realignment. Shipping is severely constrained and practically uninsurable, effectively closing the corridor to normal trade. AFPA notes that the longer this disruption continues further layers of risk will compound supply chain recovery timelines and costs in a non-linear way.

### Material and Input Impacts

Current disruptions affect several critical inputs to flexible pavement construction and maintenance:

- **Bitumen and bituminous binders:** Australia imports the majority of its bitumen supply for asphalt and bitumen spray seal applications, primarily from Asian refineries in South Korea, Singapore, and Thailand, which depend on Middle Eastern crude oil as feedstock. A number of those suppliers have now cancelled supply commitments or invoked force majeure provisions in response to current conditions. The sector is actively sourcing bitumen from all available global markets to maintain continuity; however, this arbitrage carries material cost implications through freight, logistics, and price differentials. Industry advice from major suppliers and contractors indicates bitumen prices are anticipated to rise by more than 50 per cent. Bitumen supply is experiencing immediate and significant tightening as a result, and there is a real risk of stock depletion and stock outs in the near term.
- **Australian bitumen specification:** Australia operates to a unique C-class bitumen designation under AS2008. Bitumen is currently being sourced and is in transit from alternative global markets, which are supplied to international penetration-grade specifications. These do not align directly with Australian C-class bitumen

<https://afpa.asn.au/global-bitumen-supply-chain-disruption-afpa-industry-statement-march-2026/>

GREENVALE ENERGY LIMITED

# ALPHA PROJECT

Alpha Test Program 7 continues to advance, the program has the single aim of producing a bituminous product from that can be independently certified to C-170 specification.

## Process development



*Met-core drilled at Alpha*



*4Ltr pressure reactor and inductotherm heater*



*Post reaction slurry (positive fluid dynamics)*



*Retrieved Toluene Soluble material*

## Forward work plan, priorities and opportunities

**Preliminary assessment underway** – Technix have commenced initial assessment and requested additional material (to be dispatched this week).

**Gated development** – Each test presents as a technical gate, weekly management meetings to ensure technical challenges are identified early.

**Certification is key** – C-170 certification is the key to enable economic assessment and feasibility studies.

# NEAR TERM CATALYSTS

Concurrent work fronts across multiple projects, all with a clear understanding of what is required, how to deliver and drive value for shareholders



# Thank You

## WA OFFICE

Level 1, 1 Alvan St Subiaco, WA 6008

## QLD OFFICE

Level 12, 10 Market St Brisbane, QLD 4000

**EMAIL:** [admin@greeenvaleenergy.com.au](mailto:admin@greeenvaleenergy.com.au)

**TELEPHONE:** 0485 603 120

**ASX:GRV**



Scan for Website



# DISCLAIMER

**IMPORTANT NOTICE** These presentation slides (the “Slides”) have been issued by Greenvale Energy Limited (the “Company” or “Greenvale”) in relation to an update on activities by the Company. The Slides do not constitute an offer or invitation to purchase or subscribe for any securities of the Company and should not be relied on in connection with a decision to purchase or subscribe for any such securities. The Slides do not purport to contain all of the information that an investor should consider when making an investment decision. The Slides, and any accompanying verbal presentation (together, the “Presentation”), do not constitute a recommendation regarding any decision to sell or purchase securities in the Company. By attending an investor presentation or briefing, or accepting, accessing or reviewing the Slides, you acknowledge and agree to the terms set out below.

**SUMMARY INFORMATION** The Presentation is confidential, and the Slides are supplied to you solely for your information and may not be reproduced or distributed to any other person or published, in whole or in part, for any purpose. Whilst steps have been taken to confirm the information included in the Presentation, no representation or warranty, express or implied, is given by or on behalf of the Company, directors, officers, employees, agents or advisors or any other person (“Greenvale Parties”) as to the fairness, accuracy, correctness, adequacy or completeness of the information or opinions contained in the Presentation. No liability is accepted by such Greenvale Parties for any such information or opinions or otherwise arising in connection therewith.

Other market and industry data used in this Presentation may have been obtained from research, surveys or studies conducted by third parties, including industry or general publications. None of the Greenvale Parties have independently verified any such market or industry data provided by third parties or industry or general publications. No reliance should be placed on the information or opinions contained in this Presentation, which are provided as at the date of this Presentation (unless otherwise stated) and to the maximum extent permitted by law, the Company has no obligation to update the information contained in this Presentation.

**NOT FINANCIAL PRODUCT OR ADVICE** The Presentation is not intended to constitute investment or financial advice (nor as tax, accounting or legal advice) and should not be treated as such. This Presentation has been prepared without taking into account the objectives, financial situation and particular needs of individuals.

The Slides do not constitute a prospectus, product disclosure statement or other offering document under Australian law (or any other law), but simply provide an overview to allow prospective investors to decide whether to carry out their own independent investigations and seek their own advice before making a decision whether to invest in the Company. The Presentation will not form part of any agreement or commitment for the acquisition of any of the Company’s securities.

To the maximum extent permitted by law, the Company and its officers, employees and agents disclaim all liability and responsibility (including without limitation any liability arising from fault or negligence on the part of Greenvale, its officers, employees and agents) for any direct or indirect loss or damage which may be suffered by any recipient through use of or reliance on anything contained in or omitted from the Presentation. In making an investment decision, investors must rely on their own examination of the Company including the merits and risks involved. An investment in securities is subject to known and unknown risks, some of which are beyond the Company’s control. Prospective investors should have regard to the key risks contained within the Presentation when making their investment decision. Investors should consult with their own legal, tax, business and/or financial advisors in connection with any acquisition of securities.

**INVESTMENT RISKS** All investments in securities are subject to known and unknown risks, including an investment in Greenvale shares. Some of these risks are beyond the control of Greenvale and its directors and officers, and Greenvale does not guarantee any particular rate of return or level of performance. You should consider such risk factors when deciding whether or not to invest in the Company. Cooling off rights do not apply to the acquisition of new shares in Greenvale.

**FORWARD-LOOKING STATEMENTS** The Slides contains certain statements and expressions of belief, expectation or opinion which are forward-looking statements, and which relate, inter alia, to the Company’s proposed strategy, plans and objectives or to the expectations or intentions of the Company’s directors.

Such forward-looking statements are subject to change without notice and involve known and unknown risks, uncertainties and other important factors beyond the control of the Company that could cause the actual performance or achievements of the Company to be materially different from such forward-looking statements. Accordingly, you should not rely on any forward-looking statements and the Company does not accept any obligation to disseminate any updates or revisions to such forward-looking statements, except where required by law or regulation. Any statement as to the past activities of the Company’s directors should not be relied upon as being an indication of their future performance. Indications of, and guidance on, future earnings and financial position and performance of the Company and any estimations of mineral resources are forward-looking statements. As are statements containing the words “expect”, “anticipate”, “estimate”, “intend”, “believe”, “guidance”, “should”, “could”, “may”, “will”, “predict”, “plan” and other similar expressions. Investors are strongly cautioned against placing undue reliance on forward-looking statements, especially considering the potential for volatility, uncertainty and disruption to be caused by regional and world events.

**DISCLAIMER** To the maximum extent permitted by law, the Company and each of its respective related bodies corporate, shareholders and affiliates, and each of their respective officers, directors, partners, employees, representatives, affiliates, agents, consultants and advisers (each a “Limited Party”):

- expressly disclaim any and all responsibility and liability (including, without limitation, any liability arising from fault, negligence or negligent misstatement) for any direct, indirect, consequential or contingent loss or damage arising from the Presentation or reliance on anything contained in or omitted from it or otherwise arising in connection with the Presentation;
- disclaim any obligations or undertaking to release any updates or revisions to the information in the Presentation; and
- do not make any representation or warranty, express or implied, as to the accuracy, reliability, completeness or fairness of the information, opinions and conclusions contained in the Presentation or that the Presentation contains all material information about the Company or that a prospective investor or purchaser may require in evaluating a possible investment in Greenvale or acquisition of shares in Greenvale, or likelihood of fulfilment of any forward-looking statement or any event or results expressed or implied in any forward-looking statement.

**COMPETENT PERSON STATEMENT** The information in this presentation that relates to the Alpha Mineral Resource Estimate is based on information compiled by Mr. Carl D’Silva, a Competent Person who is a Member of The Australasian Institute of Mining and Metallurgy (Member number 333432). Mr. D’Silva is a full-time employee of SRK Consulting (Australasia) Pty Ltd, a group engaged by the Company in a consulting capacity. Mr D’Silva has sufficient experience that is relevant to the style of mineralisation and type of deposit under consideration and to the activity being undertaken to qualify as a Competent Person as defined in the 2012 Edition of the ‘Australasian Code for Reporting of Exploration Results, Mineral Resources and Ore Reserves’. Mr D’Silva consents to the inclusion in the report of the matters based on his information in the form and context in which it appears. The Company confirms that it is not aware of any new information or data that materially affects the information included in the Mineral Resource Estimate dated 13 Nov 2023 as announced to the ASX on that date and which is available at [www.greenvaleenergy.com.au](http://www.greenvaleenergy.com.au). The Company confirms that in relation to the Alpha Torbanite Project Mineral Resource Estimate, all material assumptions and technical parameters underpinning the estimate continue to apply and have not materially changed when referring to its resource announcement made on 13 Nov 2023.

The information in this presentation that relates to uranium exploration results is based on information compiled by Ms Asha Rao who is Technical Advisor & Competent Person to Greenvale Energy Ltd and is a Member of both the Australasian Institute of Mining and Metallurgy (AusIMM, #228188) and the Australian Institute of Geoscientists (AIG, #6925). Ms Rao is a Consultant to the Company, and has sufficient experience that is relevant to the style of mineralisation and type of deposit under consideration, and to the overseeing of activities being undertaken to qualify as a Competent Person (as defined in the JORC 2012 edition of the “Australasian Code for Reporting of Mineral Resources and Ore Reserves”. Ms Rao consents to the inclusion of this information in the form and context in which it appears.

# EXPLORATION COMPLIANCE

## No New Information

This document contains information relating to Exploration Results extracted from ASX market announcements reported previously and published on the ASX platform on those dates noted below and available on the Company's website.

The Company confirms that it is not aware of any new information or data that materially affects the information included in the original market announcement and that all material assumptions and technical parameters underpinning the estimate in the original market announcement continue to apply and have not materially changed.

The Statements in this presentation concerning Exploration Results can be seen in announcements dated as follows:

16 March 2026 (Oasis);  
26 February 2026 (Douglas River);  
11 February 2026 (Oasis);  
18 December 2025 (Oasis);  
16 December 2025 (Alpha);  
12 November 2025 (Oasis);  
29 October 2025 (Oasis);  
21 October 2025 (Oasis);  
17 September 2025 (Oasis);  
4 September 2025 (Oasis);  
1 September 2025 (Henbury);  
8 August 2025 (Douglas River);  
17 June 2025 (NT Projects); and  
15 May 2025 (NT Projects).

This document contains information relating to the Mineral Resource Estimate for the Alpha Project, which is extracted from the Company's ASX Announcement *51% Increase in Alpha resource substantially expands project scale and potential released* 13 November 2023 and reported in accordance with the 2012 JORC Code and available for viewing on the Company's website. The Company confirms that it is not aware of any new information or data that materially affects the information included in the original announcement and that all material assumptions and technical parameters underpinning the Mineral Resource Estimate continue to apply and have not materially changed.

# GEOTHERMAL PROJECT

Untapped renewable power, strategic partner undertaking initial work, with Greenvale free-carried.

## PROJECT OVERVIEW

Located approximately 120km east of Mount Isa, within the North-West Minerals Province, the Millungera Basin Geothermal Project (“the Project”) sits over one of the most prospective areas for geothermal energy in Queensland. The targeted heat source for the Millungera Basin is high heat producing intrusives underlying the basin. Granitic bodies have been inferred from geophysical data to underlie the Millungera Basin and are possible Williams Supersuite equivalents.

## ENERGY CAPACITY

The Millungera Basin has a total stored thermal energy potential likely to exceed 611,000 petajoules (at 90% probability). In the financial year 2022-2023, Natural Gas production in Australia produced 6,200 petajoules, and black coal (Australia’s largest energy producing commodity) produced 10,784 petajoules (from 401 million tonnes). The Millungera project has the potential to be a significant contributor future clean energy supply for Australia. Refer to ASX Announcement Significant geothermal potential of Millungera Basin confirmed released 6 September 2022.

## MILLUNGERA BASIN EPG TENURE

EPG	Grant date	Term	Expiry date
2023 – Julia Creek	19 September 2025	5 years	18 September 2030
2024 – Lara Downs	10 September 2025	5 years	9 September 2030
2025 – Ouchy	6 November 2025	5 years	5 November 2030

## FARM-IN AND JOINT VENTURE

In November 2025 the Company entered into a Farm-in Agreement with SRL Hot Rocks Pty Ltd, a 100% owned subsidiary of Sunrise Energy Metals Limited (ASX:SRL) whereby Sunrise is able to earn a 80% interest in the Project by spending \$5 million over five years (minimum obligation before option to withdrawal of \$50,000) over two expenditure periods: Phase 1 of \$2 million over three years and Phase 2 of \$3 million over two years.



Millungera Basin Geothermal Project map

# ELKEDRA-HENBURY PROJECT

The region is structurally complex, with major fault systems and deep sedimentary basins. The region contains known uranium deposits but potential remains, particularly in the underexplored Georgina Basin, for sediment-hosted uranium systems.

### INFRASTRUCTURE

Exploration based out of Alice Springs, ready access to technical trades and operators to support exploration and project development.

### URANIUM PEDIGREE

Projects are located in the Amadeus Basin (with known uranium deposits – Angela/Pamela) and Georgina Basin (known for hydrocarbons associated with uranium deposition).

### WORK COMPLETED AND FORWARD OPPORTUNITIES

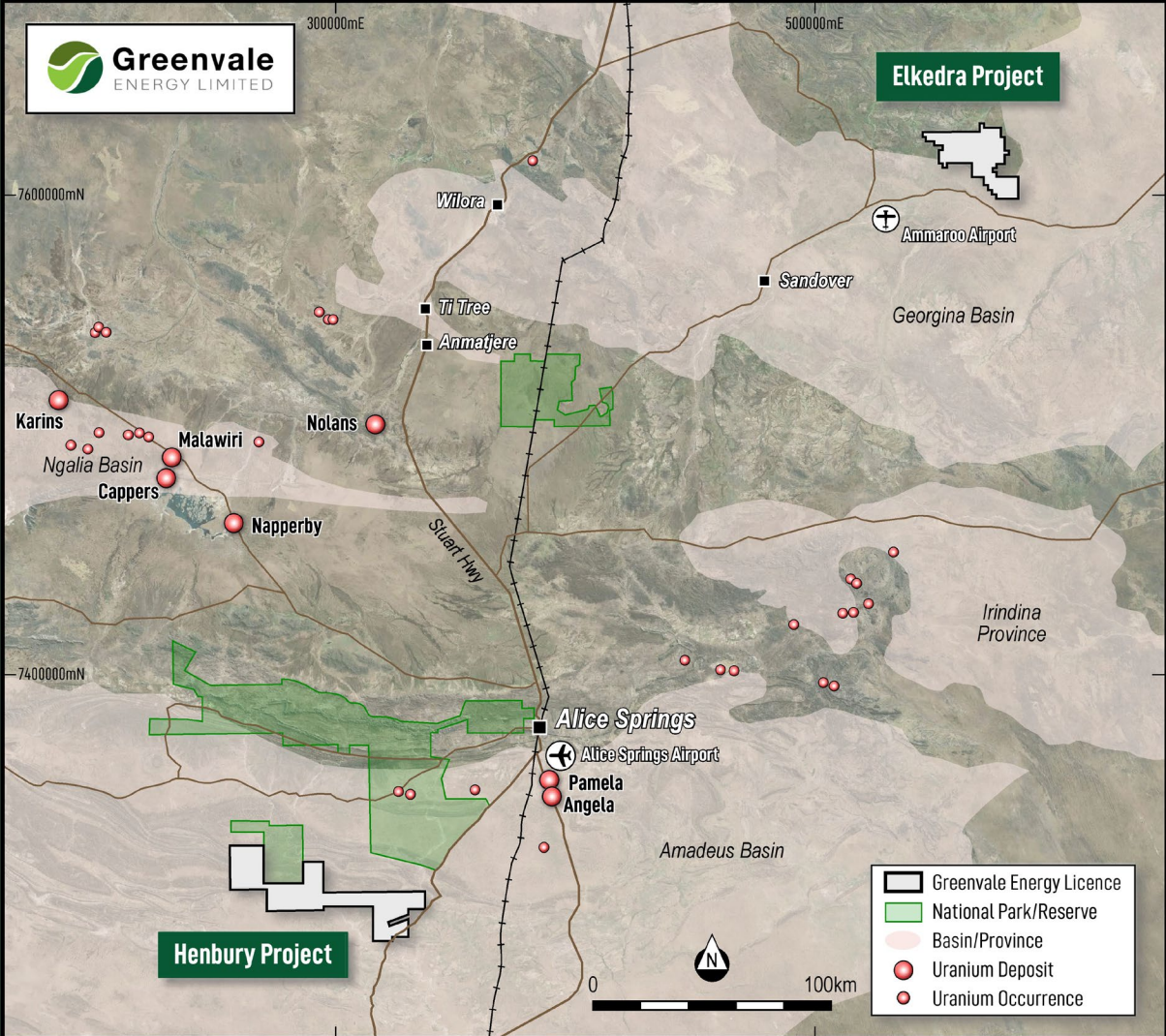
Project wide airborne geophysics flown (2024/25).

Elkedra contains a significant 8km-long radiometric anomaly\* situated in prospective Arthur Creek siltstone and Andagera Formation conglomerates.

Coincident NE-trending helium anomaly suggesting possible structure at that contact, but this needs to be confirmed.

Henbury is situated within prospective geological formations (Meerenie Sandstone), proximal to known oil and gas fields (excellent reductants for uranium).

Initial reconnaissance exploration completed at Henbury in Sept 2025. Follow-up targets identified for mapping/sampling.



\* Refer to Exploration/Compliance statement