



**GORILLA
GOLD**

Rapidly growing high-grade gold in Western Australia

**RRS Gather Round Conference
April 2026**

Disclaimer

Nature of Document: This presentation has been prepared and issued by Gorilla Gold Mines Ltd (Company) to provide general information about the Company. The information in this document is in summary form and should not be relied upon as a complete and accurate representation of any matters that a reader should consider in evaluating the Company. While management has taken every effort to ensure the accuracy of the material in this presentation, the Company and its advisers have not verified the accuracy or completeness of the material contained in this presentation.

Forward looking statements: This presentation contains forward-looking information about the Company and its operations. In certain cases, forward-looking information may be identified by such terms as "anticipates", "believes", "should", "could", "estimates", "target", "likely", "plan", "expects", "may", "intend", "shall", "will", or "would". These statements are based on information currently available to the Company and the Company provides no assurance that actual results will meet management's expectations. Forward-looking statements are subject to risk factors associated with the Company's business, many of which are beyond the control of the Company. It is believed that the expectations reflected in these statements are reasonable, but they may be affected by a variety of variables and changes in underlying assumptions which could cause actual results or trends to differ materially from those expressed or implied in such statements. There can be no assurance that actual outcomes will not differ materially from these statements.

Disclaimer: No representation or warranty, express or implied, is made by the Company that the material contained in this presentation will be achieved or proved correct. Except for statutory liability which cannot be excluded, each of the Company, its directors, officers, employees, advisors and agents expressly disclaims any responsibility for the accuracy, fairness, sufficiency or completeness of the material contained in this presentation and excludes all liability whatsoever (including in negligence) for any loss or damage which may be suffered by any person as a consequence of any information in this presentation or any effort or omission therefrom. The Company will not update or keep current the information contained in this presentation or to correct any inaccuracy or omission which may become apparent, or to furnish any person with any further information. Any opinions expressed in the presentation are subject to change without notice.

Competent Person's Statement

The Company confirms that it is not aware of any new information or data that materially affects the information included in those announcements and all material assumptions and technical parameters underpinning the resource estimates with those announcements continue to apply and have not materially changed. The Mineral Resource estimates shown for Comet Vale, Mulwarrie, Vivien and Labyrinth were prepared and disclosed by Gorilla Gold Mines Ltd. The information in this presentation related to Exploration Results or Mineral Resources based on and fairly represents information and supporting documentation compiled by Mr Charles Hughes who is a Professional Geoscientist and a Member of the Australian Institute of Mining and Metallurgy and an employee of Gorilla Gold Mines Ltd. Mr Hughes has sufficient experience relevant to the style of mineralisation and type of deposits under consideration, and to the activities which have been undertaken to qualify as a Competent Person as defined in the 2012 Edition of the Joint Ore reserves committee (JORC) Australian Code for Reporting of Exploration results, Mineral Resources and Ore Reserves. Mr Hughes consents to the inclusion in this announcement of the matters based on this information in the form and context in which it appears.

This presentation has been authorised and approved for release by the Chief Executive Officer.



A High-Grade, High-Growth Gold Company

Granted Mining Leases, close to infrastructure, significant execution optionality

RAPIDLY GROWING RESOURCE BASE

1.5Moz at 3.8g/t Au with exceptional growth potential

MULTI-MILLION OUNCE GROWTH POTENTIAL

70km of targets defined, 6.5km drilled for 1.5Moz so far

HIGH-GRADE EXPLORATION STRATEGY

Focus on growing high-grade gold deposits, building optionality into project

PERMITTING WELL ADVANCED

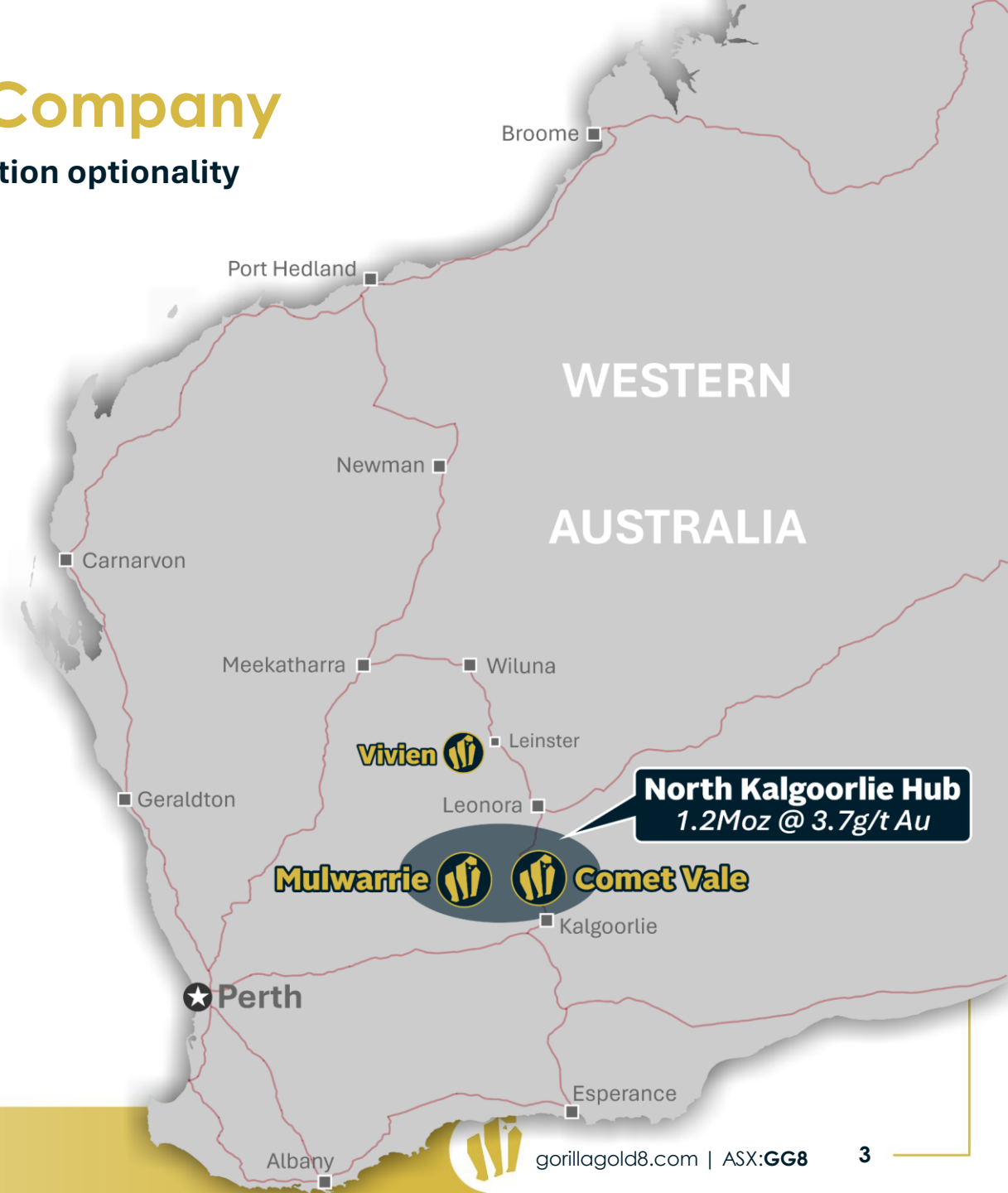
All permits in place to resume Vivien UG mine, one permit required for Comet Vale UG

TEAM WITH A PROVEN TRACK RECORD

Accomplished team which has successfully delivered 1.3Moz at \$20/oz in 2025

MULTIPLE UPCOMING CATALYSTS

Well-funded with ~\$37m in cash (Dec 2025), 150km drill program underway



North Kalgoorlie Gold Hub – 1.2Moz @ 3.7g/t Au

Gorilla's flagship growth platform in WA

District-scale upside

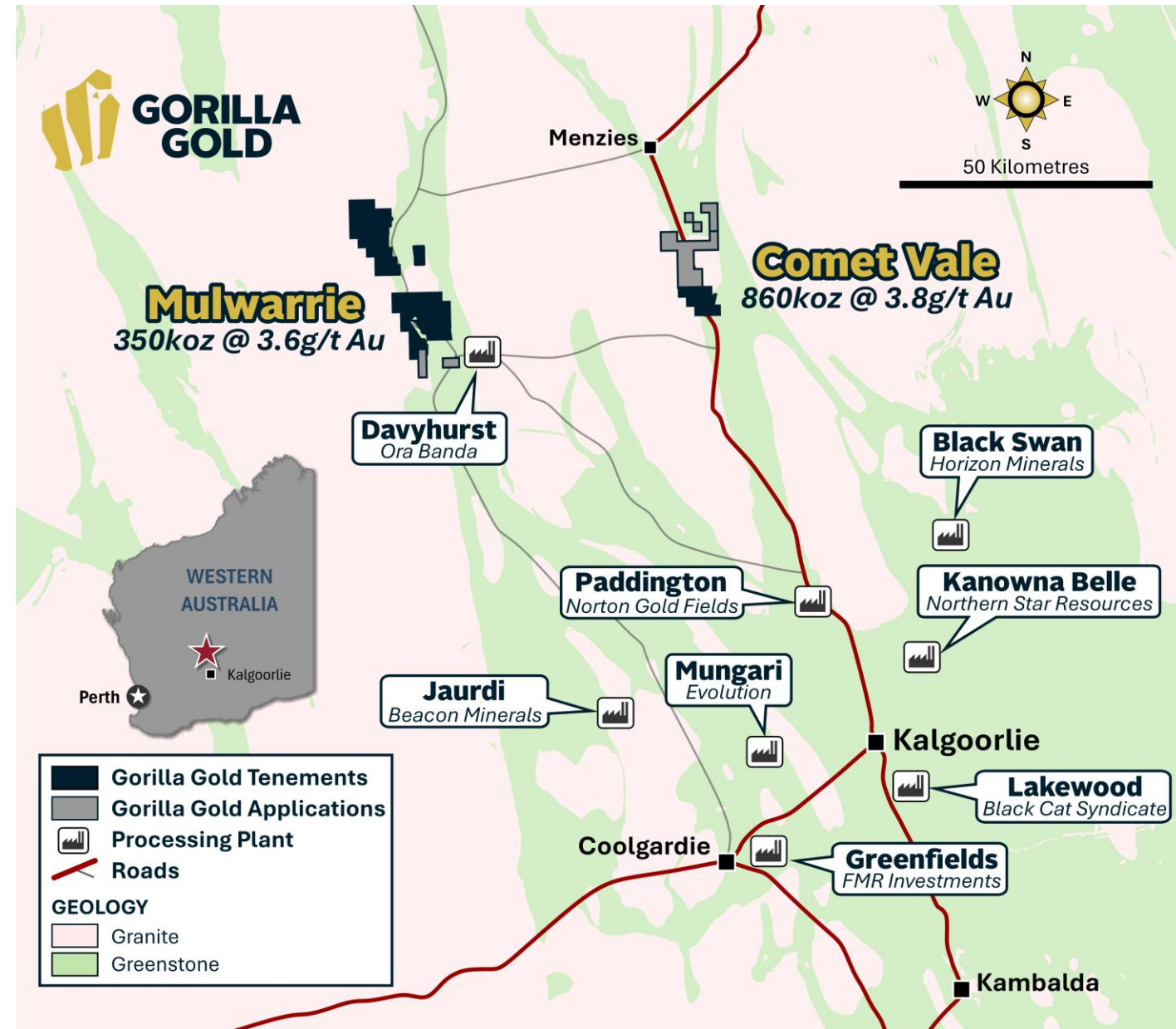
- 1.2Moz at 3.7g/t Au current resource base
- ~64km of mineralised structures identified
- Only 5.5km tested for 1.2Moz at Comet Vale and Mulwarrie
- Significant exploration upside across entire district

Aggressive drilling program

- 5+ rigs drilling 120,000m in 2026
- 50:50 split between growth and in-fill drilling

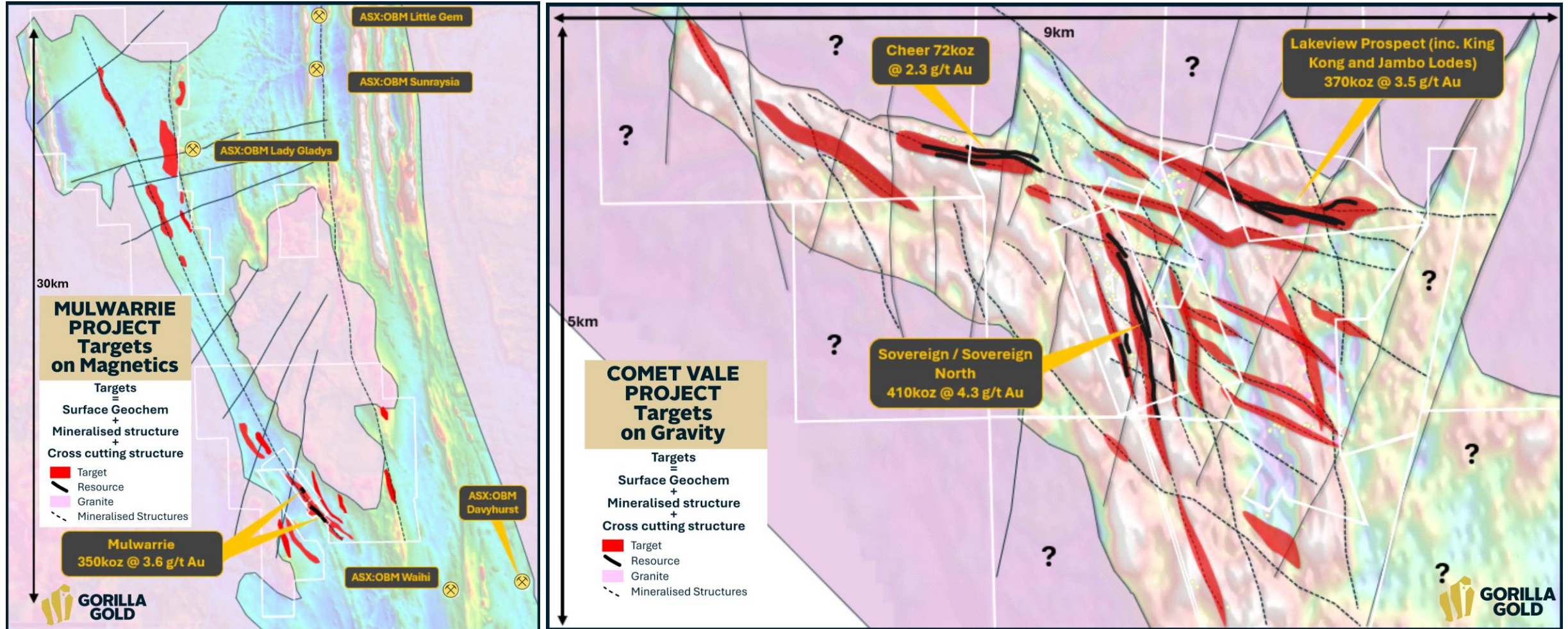
Pipeline of development opportunities

- Pipeline of development opportunities currently being defined and permitted
- Close to infrastructure and multiple operating mills



North Kalgoorlie Hub – District-Scale Multi-Million-Ounce Upside

64km of targets, 5.5km drilled for high-grade 1.2Moz Resource base



Comet Vale – 860,000oz and Growing

High-grade camp, multiple new discoveries on granted Mining Leases next to the Goldfields Highway

Camp-scale mineralisation

9x5km zone of complex faulting, shearing and mineralisation – highly prospective

Simple targeting

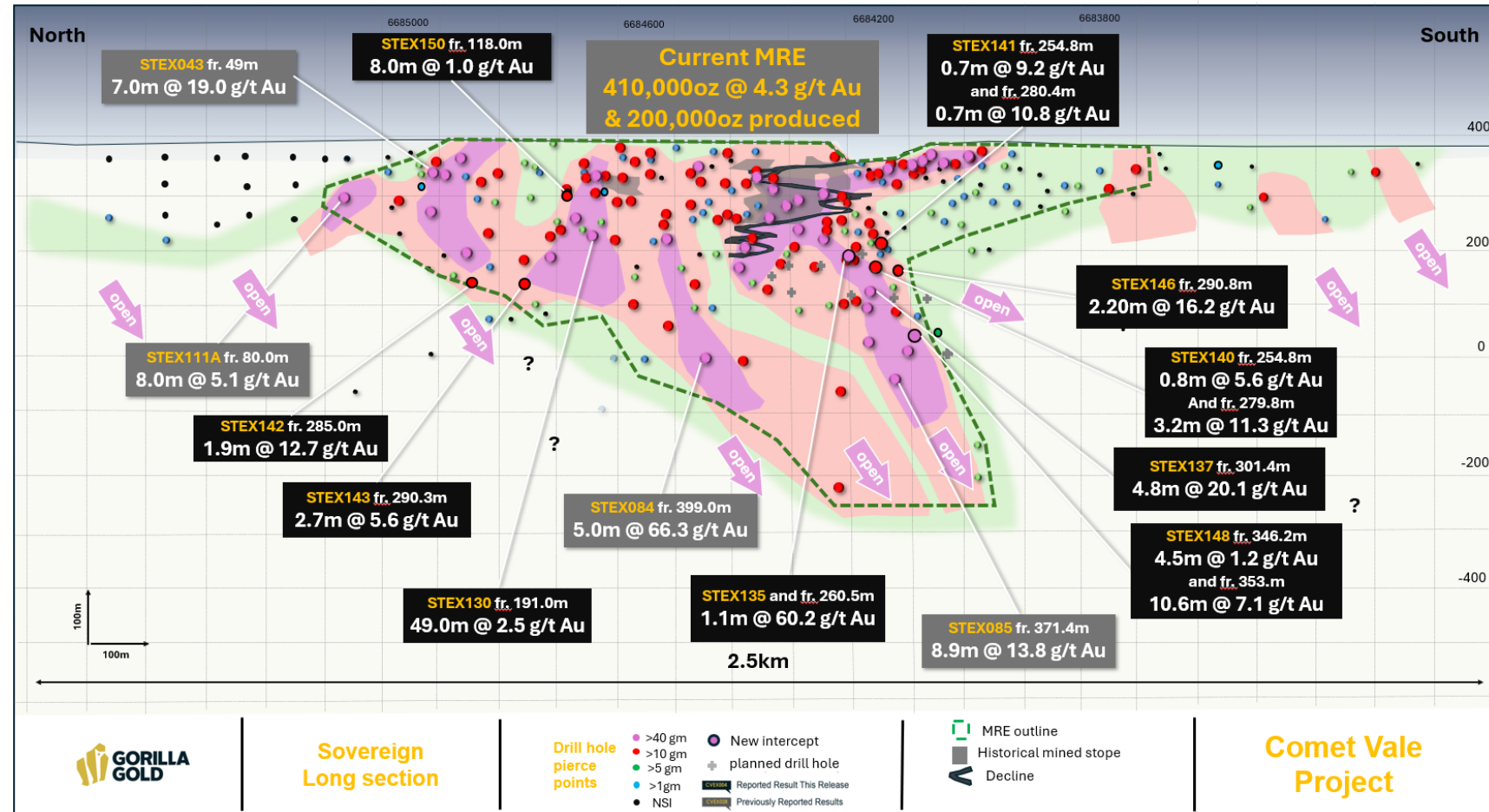
Surface geochem + known mineralised structure = gold, 34km of targets with similar structures and mineralisation – 4km tested for 860,000oz

Free-milling gold

Sovereign ore treated in three separate mills for >95% recovery, initial metallurgy for Lakeview indicates >95% recovery

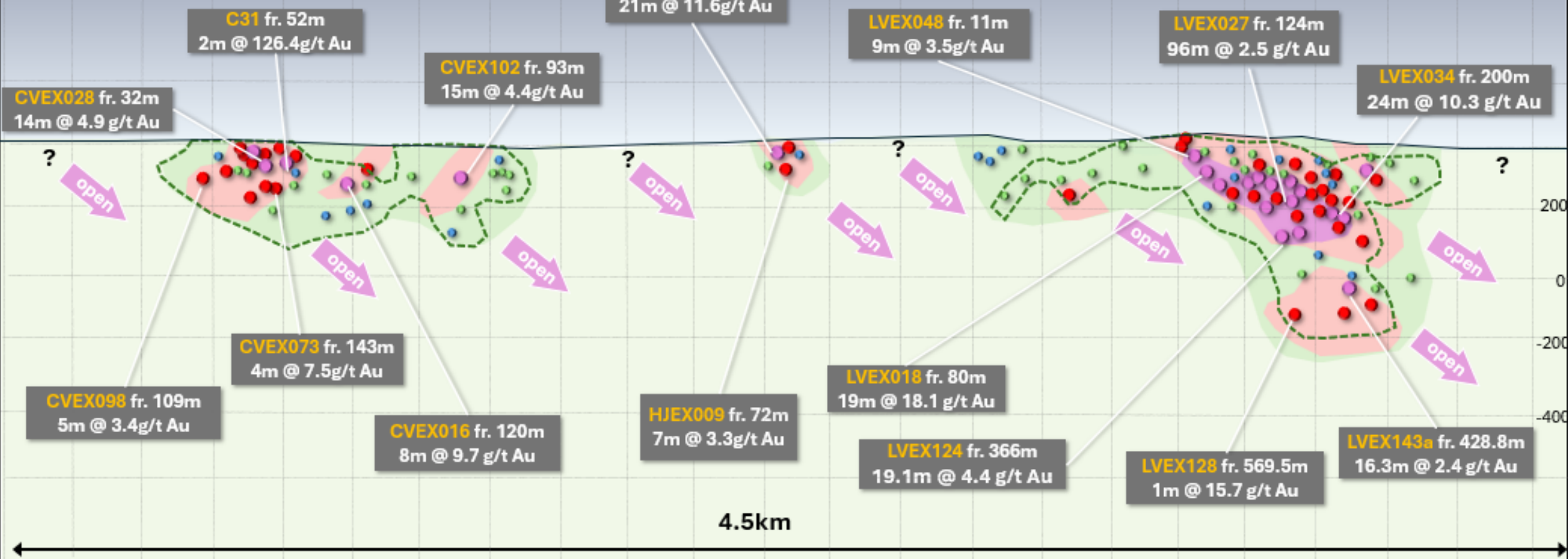
Advanced permitting

1 permit required to commence underground activities at Sovereign



**Current Cheer MRE
72,000oz @ 2.5 g/t Au**

**Current Lakeview MRE
350,000oz @ 3.5 g/t Au**



Cheer-Lakeview Long section looking North

- Drilling composite shapes
- >40 gm drill intercept
 - >10 gm drill intercept
 - >5 gm drill intercept
 - >1 gm drill intercept
 - NSI

HJEX005 fr. 23m
21m @ 11.6g/t Au
Previously reported drilling result

Comet Vale Project



Mulwarrie – Significant Regional Growth Upside

350,000oz @ 3.6g/t Au from surface, next to Davyhurst haul road and 10km from the closest mill

Camp-scale mineralisation

Multiple major mineralised structures including Mulwarrie structure, Lady Gladys structure, Little Gem structure

Simple targeting

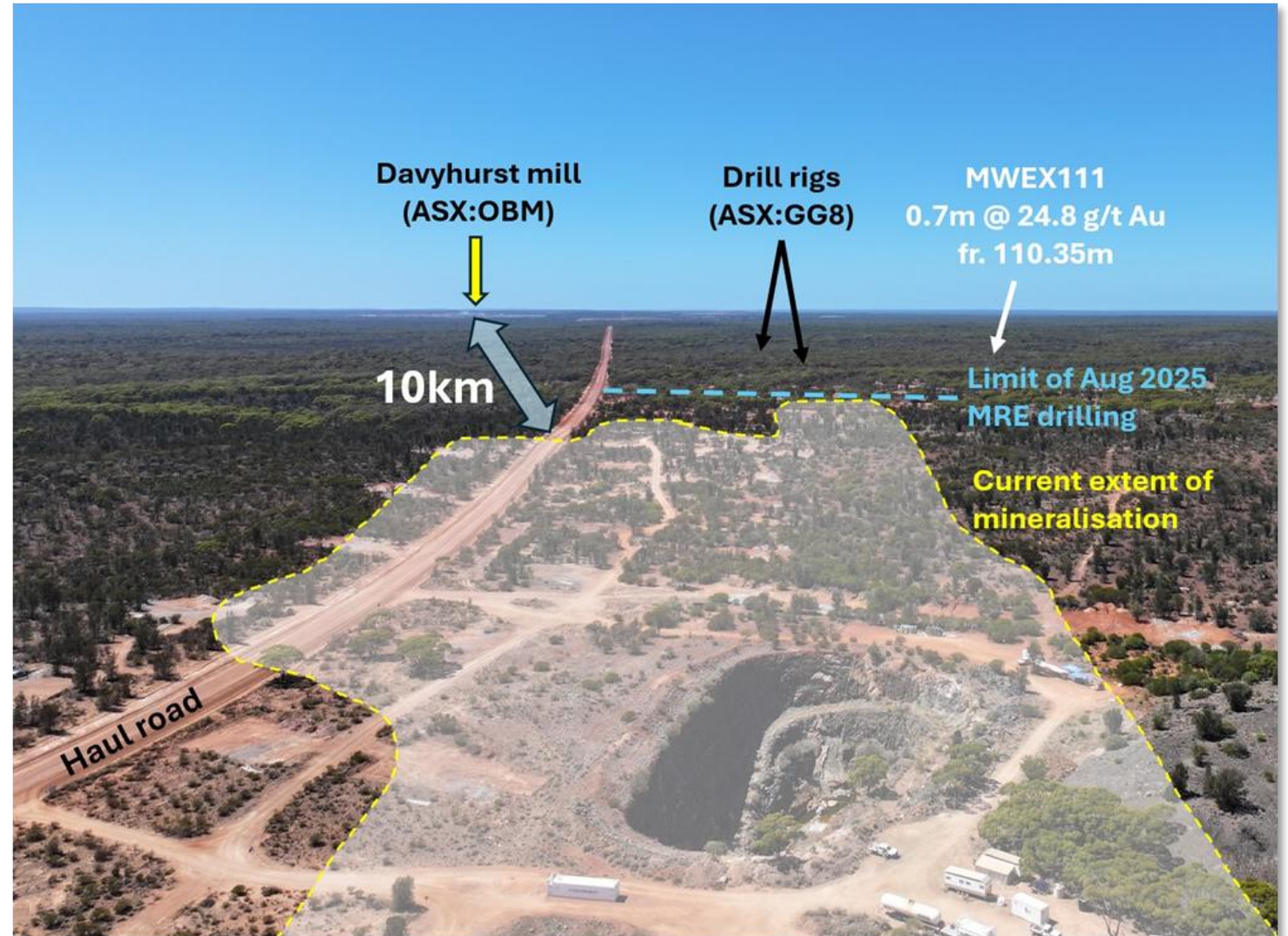
Surface geochem + known mineralised structure = gold, 30km of specific targets with 1.5km drilled for 350,000oz

Free-milling gold

>95% recovery from advanced metallurgy testwork

Granted ML

Studies and mine permitting underway



SSE

6672000N

6674000N

NNW

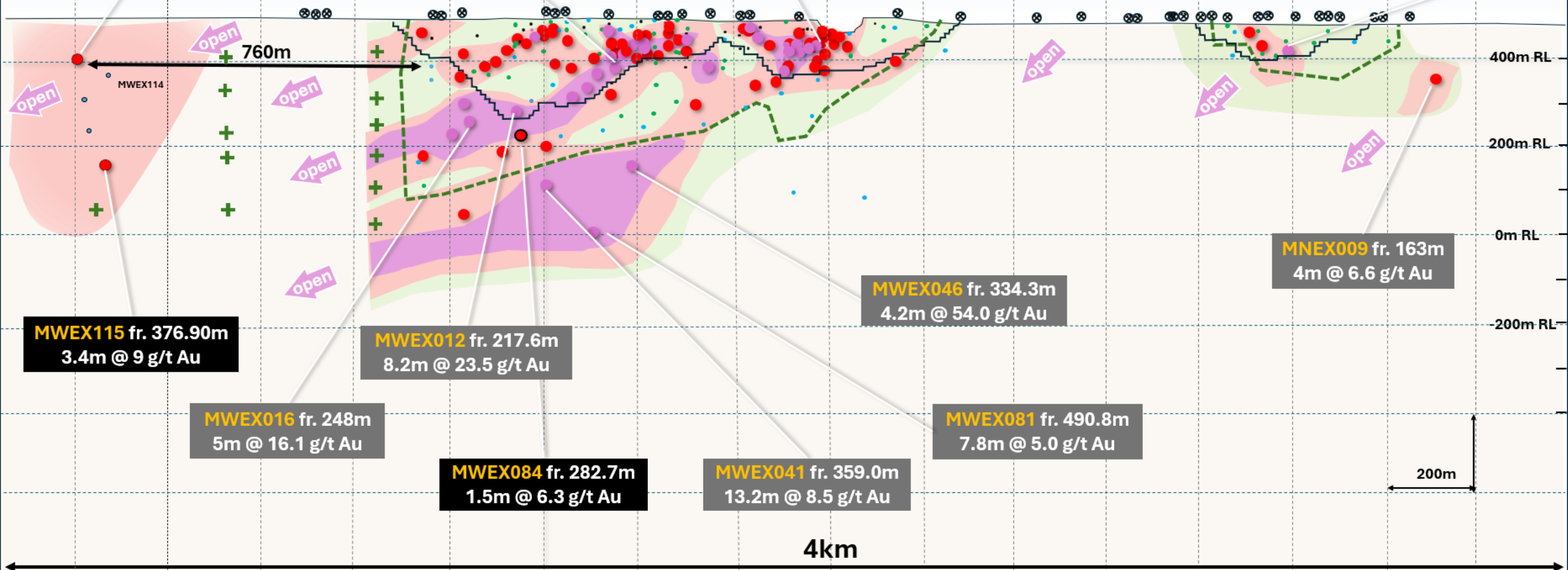
MWEX111 fr. 110.4m
0.7m @ 24.8 g/t Au

17MWRC097 fr. 122m
14m @ 12 g/t Au

17MWRC008 fr. 73m
5m @ 95 g/t Au

Current Mulwarrie MRE
350,000oz @ 3.6 g/t Au

17MWRC085 fr. 83m
3m @ 13.2 g/t Au



MWEX115 fr. 376.90m
3.4m @ 9 g/t Au

MWEX016 fr. 248m
5m @ 16.1 g/t Au

MWEX012 fr. 217.6m
8.2m @ 23.5 g/t Au

MWEX084 fr. 282.7m
1.5m @ 6.3 g/t Au

MWEX041 fr. 359.0m
13.2m @ 8.5 g/t Au

MWEX046 fr. 334.3m
4.2m @ 54.0 g/t Au

MWEX081 fr. 490.8m
7.8m @ 5.0 g/t Au

MNEX009 fr. 163m
4m @ 6.6 g/t Au



Mulwarrie Long section

Drill hole pierce points

- >40 gm
- >10 gm
- >5 gm
- >1gm
- NSI
- ⊙ New intercept
- + Pending drill hole intercept

- Reported Result This Release
- Previously Reported Results
- MRE outline
- Target area
- Historical working

Mulwarrie Project

Vivien – Permitted High-Grade Gold Mine with Major Growth Upside

4km from the closest mill

High-grade gold with outstanding growth upside

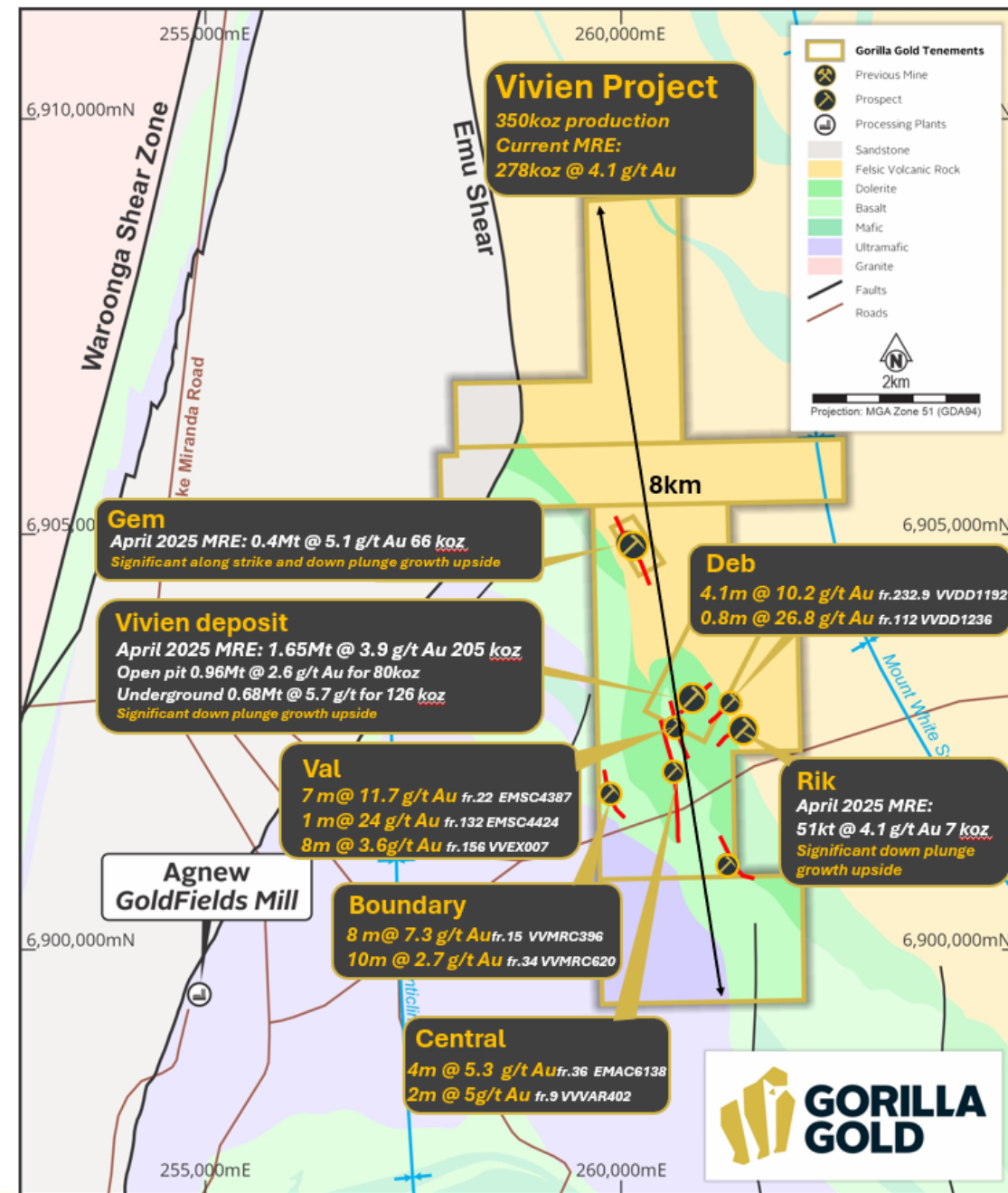
278,000oz @ 4.1 g/t Au resource base, multiple targets, quality ore bodies

Free-milling gold

Ore treated at ASX:RMS Mt Magnet mill ~ 300km to the west of the project

Permitted for UG

Mining by ASX:RMS finished in 2023, fully permitted to re-enter UG mine.



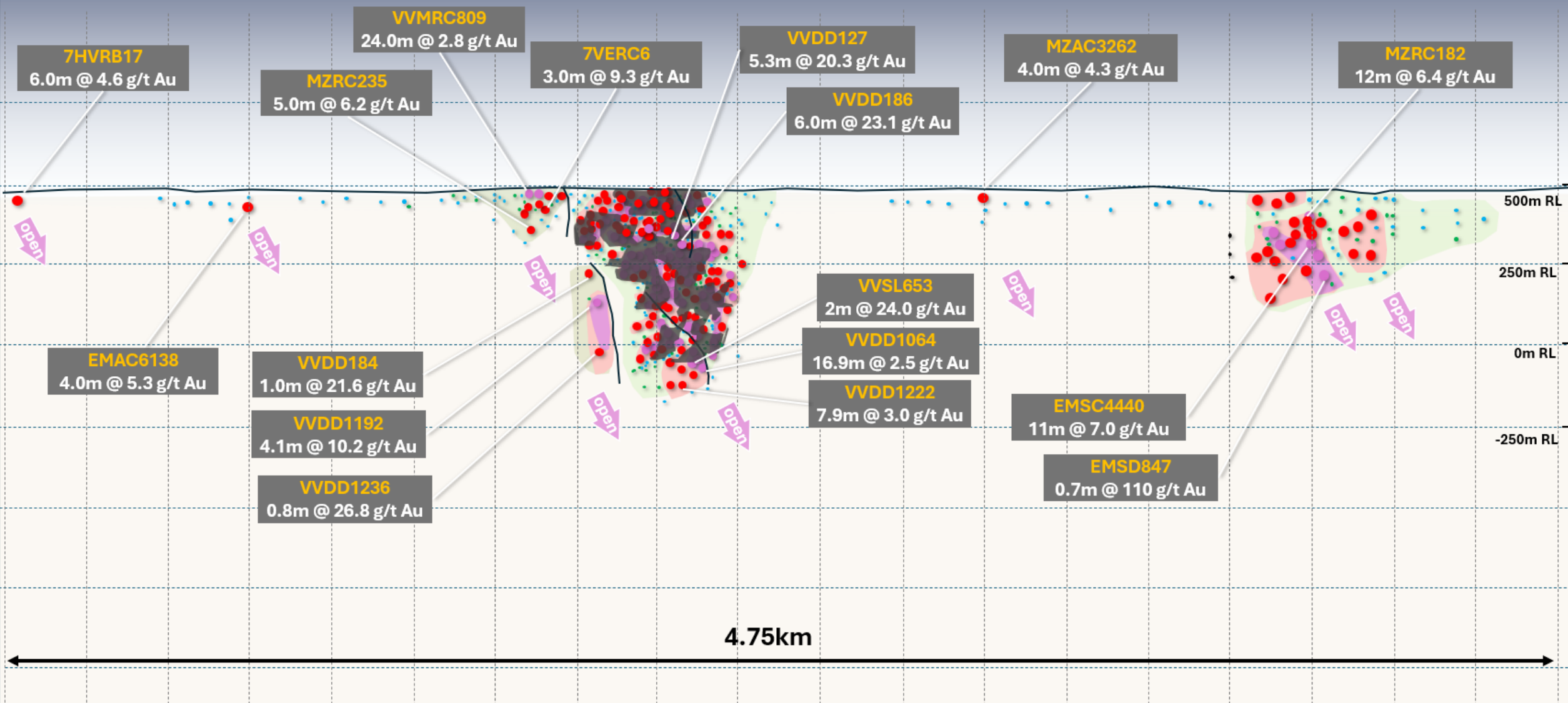
SE

6900000N

6902000N

6904000N

NW



Vivien Long section

Drill hole
pierces
points

- >40 gm
- >10 gm
- >5 gm
- >1gm
- NSI
- New intercept
- + Pending drill hole intercept

- CVEX004 Reported Result This Release
- CVEX008 Previously Reported Results

Vivien Project

Well-Funded and Aggressive Drilling Strategy

With an accelerated pathway to development

150,000m drilling targeted for 2026

Across West Australian Projects

120,000m drilling for North Kalgoorlie Hub

50% in-fill, 50% growth

30,000m for Vivien project

Mostly growth drilling.

Studies and permitting

Across all three projects simultaneously

North Kal hub		Vivien			
Discovery	2026 Q1	Q2	Q3	Q4	
Heritage and enviro surveys					
Growth and exploration drilling					
News flow -Drilling updates					
Definition	2026 Q1	Q2	Q3	Q4	
Conversion drilling					
Geotechnical studies					
Metallurgical studies	☑				
Hydrological studies	☑				
News flow - MRE upgrades					Window for all projects
News flow - Study releases					Window for all projects
Development	2026 Q1	Q2	Q3	Q4	
Water permitting	☑				
UG mine permitting	☑				
OP mine permitting					
Dewatering					
UG Development (for drilling)					



A Quality Team with a Track Record of Discovery and Development

Rapid and efficient deployment of capital

Strong geology credentials

Discovery, growth, mining at Northern Star, Spartan, Saracen, Spectrum, BHP, Bellevue

Developers who have done it all before

From discovery to delivery at Northern Star, Ramelius, Ora Banda, Spartan, Bellevue

Major resource growth delivered cheaply

1.3Moz resource upgrade in 2025 (1,500% increase) for ~\$20/oz



Charles Hughes – Chief Executive Officer
Northern Star, Saracen, Bellevue, Delta Lithium

Daniel Kendall – Chief Financial Officer
Delta Lithium

Matt Crowe – Exploration Manager
BHP, Dreadnaught

Jarrod Ramadan – Principal Engineer/Studies
Ora Banda, Ramelius, Anglo Gold

Chris Goti – Principal, Approvals & Heritage
Spartan

Kelly Moore – Company Secretary

Dean Hely – Non-Executive Chair
Lavan Legal

Simon Lawson – Non-Executive Director
Spartan, Ramelius, Northern Star, Torque

Kelvin Flynn – Non-Executive Director
Goldman Sachs, MinRes, Vault

Craig Jones – Non-Executive Director
Northern Star, Bellevue, Spartan, Torque

Alex Hewlett – Non-Executive Director
Spectrum, Delta Lithium, Wildcat



Invest in Gorilla for High-Growth, High-Grade Gold

With strategically located projects

RAPIDLY GROWING RESOURCE BASE

1.5Moz at 3.8g/t Au with exceptional growth potential

MULTI-MILLION OUNCE GROWTH POTENTIAL

70km of targets defined, 6.5km drilled for 1.5Moz so far

HIGH-GRADE EXPLORATION STRATEGY

Focus on growing high-grade gold deposits, building optionality into project

PERMITTING WELL ADVANCED

All permits in place to resume Vivien UG mine, one permit required for Comet Vale UG

TEAM WITH A PROVEN TRACK RECORD

Accomplished team which has successfully delivered 1.3Moz at \$20/oz in 2025

MULTIPLE UPCOMING CATALYSTS

Well-funded with ~\$37m in cash (Dec 2025), 150km drill program underway



Corporate Snapshot

ANALYST COVERAGE



EUROZ HARTLEYS

SHARES ON ISSUE

730M

CASH

\$37M

as at 31 Dec 25

MARKET CAP

\$292M

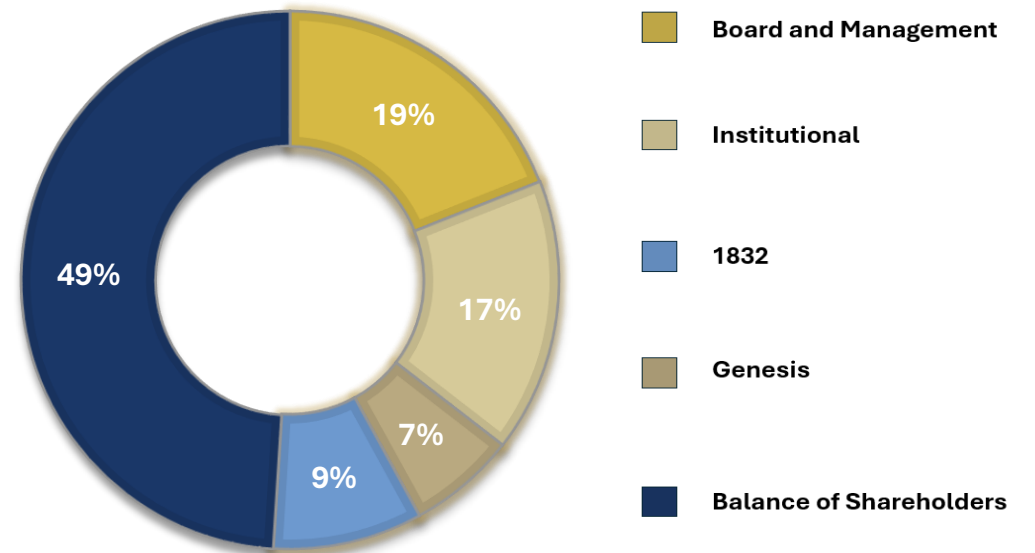
\$0.40

SHAREPRICE

ASX:GG8



Significant shareholders





Contact

Charles Hughes | CEO

admin@gg8.com.au

www.gorillagold8.com.au

Appendix



Image: Comet Vale

Mineral Resource Statements

	Indicated			Inferred			Total		
Category	Tonnage (Mt)	Au Grade (g/t)	Au Moz	Tonnage (Mt)	Au Grade (g/t)	Au Moz	Tonnage (Mt)	Au Grade (g/t)	Au Moz
Comet Vale	1.7	4.1	0.22	5.6	3.5	0.64	7.3	3.7	0.86
Mulwarrie	1.3	2.8	0.11	1.8	4.2	0.24	3.0	3.6	0.35
Vivien	0.2	4.9	0.03	2.0	4.1	0.25	2.1	4.1	0.28
WA Total	3.2	3.5	0.4 Moz	9.4	3.8	1.1 Moz	12.4	3.8	1.5 Moz
Labyrinth	-	-	-	3.0	5.0	0.5	3.0	5.0	0.5Moz
Total	3.2	3.5	0.4 Moz	12.4	4.0	1.6 Moz	15.4	4.0	2.0 Moz



Mineral Resource Statements – Comet Vale

Comet Vale Mineral Resource estimate						
		Resource category	Cut-off	Au		
			grade	Tonnes	Grade	Au
			(Au g/t)	(kt)	(Au g/t)	(koz)
All	OP	Indicated	0.5	1,300	4.3	180
		Inferred		2,400	2.3	180
		Sub Total		3,700	3.0	350
	UG	Measured	1.1			
		Indicated		400	3.7	47
		Inferred		3,200	4.5	460
		Sub Total		3,600	4.4	510
	ALL	Measured				
		Indicated		1,700	4.1	220
		Inferred		5,600	3.5	640
		Total Resource		7,300	3.7	860

The Company confirms that it is not aware of any new information or data that materially affects the information as previously released on 15 December 2025 and all material assumptions and technical parameters underpinning the estimate continue to apply and have not materially changed.



Mineral Resources – Mulwarrie Gold Project

Mulwarrie Mineral Resource Estimate Summary (0.5g/t cut-off Open pit, 1.1 g/t Underground)

Category	Tonnage (Mt)	Au Grade (g/t)	Au Ounces
Inferred	1.3	2.8	110,000
Indicated	1.8	4.2	240,000
Total	3	3.6	350,000

The Company confirms that it is not aware of any new information or data that materially affects the information as previously released on 4 August 2025 and all material assumptions and technical parameters underpinning the estimate continue to apply and have not materially changed.



Mineral Resources – Vivien Gold Project

Comet Vale March 2023 Depleted Open Pit Resource (Au \geq 0.5g/t OP)

Category	Tonnage (Mt)	Au Grade (g/t)	Au Ounces
Indicated	0.15	4.9	24,000
Inferred	1.95	4.1	254,000
Total	2.10	4.1	278,000

The Company confirms that it is not aware of any new information or data that materially affects the information as previously released on 14 April 2025 and all material assumptions and technical parameters underpinning the estimate continue to apply and have not materially changed.



Mineral Resources – Labyrinth Gold Project

Inferred			
Lode	Tonnage (Mt)	Au Grade (g/t)	Au Ounces
Boucher	1.0	5.7	190,000
McDowell	1.0	4.5	150,000
Talus	0.7	5.3	110,000
Front West	0.2	2.7	20,000
Shaft	0.1	5.5	30,000
Total	3.0	5.0	500,000

The Company confirms that it is not aware of any new information or data that materially affects the information as previously released on 27 September 2022 and all material assumptions and technical parameters underpinning the estimate continue to apply and have not materially changed.



Relevant releases

This presentation refers to historic press releases:

- Mulwarrie High Grade Gold Intercept Beyond Resource (refer to ASX Announcement 18 March 2026)
- Thick Drilling Intercepts at Comet Vale (refer ASX Announcement 23 February 2026)
- Mulwarrie Drilling Resumes and Further High-Grade Intercepts (refer ASX Announcement 27 January 2026)
- Major Resource Upgrade for Comet Vale (refer ASX Announcement 15 December 2025)
- Mulwarrie Met Results and Drilling Commenced (refer ASX Announcement 24 November 2025)
- Comet Vale Drill Results and MRE Timing Update (refer ASX Announcement 11 November 2025)
- High Priority Surface Geochem Targets - Comet Vale/Mulwarrie (refer ASX Announcement 17 October 2025)
- Mulwarrie High-Grade Step Outs (refer ASX Announcement 3 October 2025)
- Lakeview Metallurgy Update (refer ASX Announcement 5 August 2025)
- Mulwarrie Resource Update (refer ASX Announcement 4 August 2025)
- Mulwarrie Drilling Update (refer ASX Announcement 28 July 2025)
- Mulwarrie Drilling Update (refer ASX Announcement 17 July 2025)
- Lakeview Drilling Update (refer ASX Announcement 7 July 2025)
- High grade diamond results from Mulwarrie (refer ASX Announcement 12 June 2025)
- Lakeview Update (refer ASX Announcement 6 June 2025)
- Mulwarrie Drilling Update (refer ASX Announcement 30 May 2025)
- Parallel Structure Discovered at Lakeview (refer ASX Announcement 19 May 2025)
- Lakeview Update (refer ASX Announcement 8 May 2025)
- Lakeview Extended 125m Along Strike (refer ASX Announcement 17 April 2025)
- Mulwarrie Drilling Update (refer ASX Announcement 4 April 2025)
- Maiden Drill Results at Mulwarrie (refer ASX Announcement 21 March 2025)
- Further Intercepts from Lakeview Prospect (refer ASX Announcement 21 March 2025)
- Further high-grade Hits from Lakeview & Sovereign Prospects (refer ASX Announcement 17 March 2025)
- Lakeview high-grade Intercepts Grow Mineralisation (refer ASX Announcement 28 February 2025)
- Gold Intercepts from New Prospects at Comet Vale and Vixen (refer ASX Announcement 24 February 2025)
- New Gold lode emerges North of Comet Vale's Sovereign Trend (refer ASX announcement 10 February 2025)
- Reporting on Genesis Minerals Mulwarrie Project (refer ASX Announcement 18 November 2024)
- Maiden Gold Drilling Results at Cheer (refer ASX Announcement 6 November 2024)
- Review of historical Vivien and Comet Vale databases (refer to ASX Announcement 13 September 2024)
- Comet Vale Resource Estimate 2023 (refer to ASX Announcement 11 April 2023)
- Labyrinth Resource Estimate 2022 (refer to ASX Announcement 27 September 2022)
- High-grade Diamond Drilling Results at Mulwarrie Confirm Lode Structures and Pave Way for Resource Upgrade (refer to ASX Announcement 18 March 2019)

The Company confirms that it is not aware of any information or data that materially affects the information included in the said original announcements and the form and context in which the Competent Persons' findings are presented have not materially modified from the original market announcements.

