

Commencement of Field Activities at Dinokwe

Blaze Minerals Limited (ASX: BLZ) (**Blaze** or the **Company**) is pleased to announce field activities have commenced on the Dinokwe Base Metals Project (**Project**) in Botswana, where it is targeting copper-nickel mineralisation within the Limpopo Mobile Belt (LMB).

The Dinokwe Project consists of 3 granted prospecting licenses and one application, covering a total area of 1771km². Blaze has entered into a binding agreement to acquire up to a 90% interest in three exploration projects in Botswana (refer ASX release 11 March 2026) and has prioritised the Dinokwe Base Metals Project for initial field work.

HIGHLIGHTS:

- **The Dinokwe Project is located within the Limpopo Mobile Belt and covers a total area of ~1771km².**
- **The Limpopo Mobile Belt hosts significant base metal deposits such as the Selebi-Phikwe copper-nickel deposit which boasts a 2024 inferred mineral resource estimate of 24.7 Mt at 1.50% Cu and 0.92% Ni.¹**
- **Field work includes a systematic soil sampling campaign, which is currently targeting several priority zones identified from regional geophysics, as well as geological mapping and rock-chip sampling where applicable.**

Managing Director of Blaze Minerals, Mathew Walker, commented *"We are delighted to be back in the field so soon after the announcement of our acquisition earlier this month. These initial activities target priority areas on PL046 with further programs scheduled immediately thereafter on neighbouring PL0349 and PL0350"*.

¹ https://premiumnickel.p8.adnetcms.com/site/assets/files/7331/selebi_ni_43-101_mre_technical_report_2024.pdf





ASX: BLZ

ASX ANNOUNCEMENT

31 MARCH 2026

The Dinokwe Project

The Dinokwe Project licenses are underlain by the Mahalapye and Baines Drift Complexes which form part of the regional Limpopo Mobile Belt (LMB). The LMB is characterised by Archean basement gneisses, migmatites, amphibolites, as well as metasediments which have been intruded by a series of ultramafic dykes. Mineralisation typically occurs within the amphibolites or late-stage ultramafics. The Mahalapye and Baines Drift Complexes share many lithological similarities to the Phikwe Complex which hosts the Selebi-Phikwe copper-nickel deposit (inferred resources of 24.7 Mt at 1.50% Cu and 0.92% Ni)², roughly 150km to the north.

Notable exploration activities within the Baines Drift Complex include that by Albidon Limited (ASX: ALB) which undertook drilling at the Sunnyside target and intersected significant sulphide mineralisation (e.g. 18.64m @ 0.75% Ni, 0.55% Cu)³ within amphibolites.

The map below shows the planned soil sample locations across the target areas on PL046. Soil sampling is being conducted along NNE oriented lines at 50m sample spacing, with lines positioned 400m apart to the east and west. This broad spaced sampling is designed as a first pass to cover large areas – closer spaced sampling will be conducted to constrain any anomalies that may be detected.

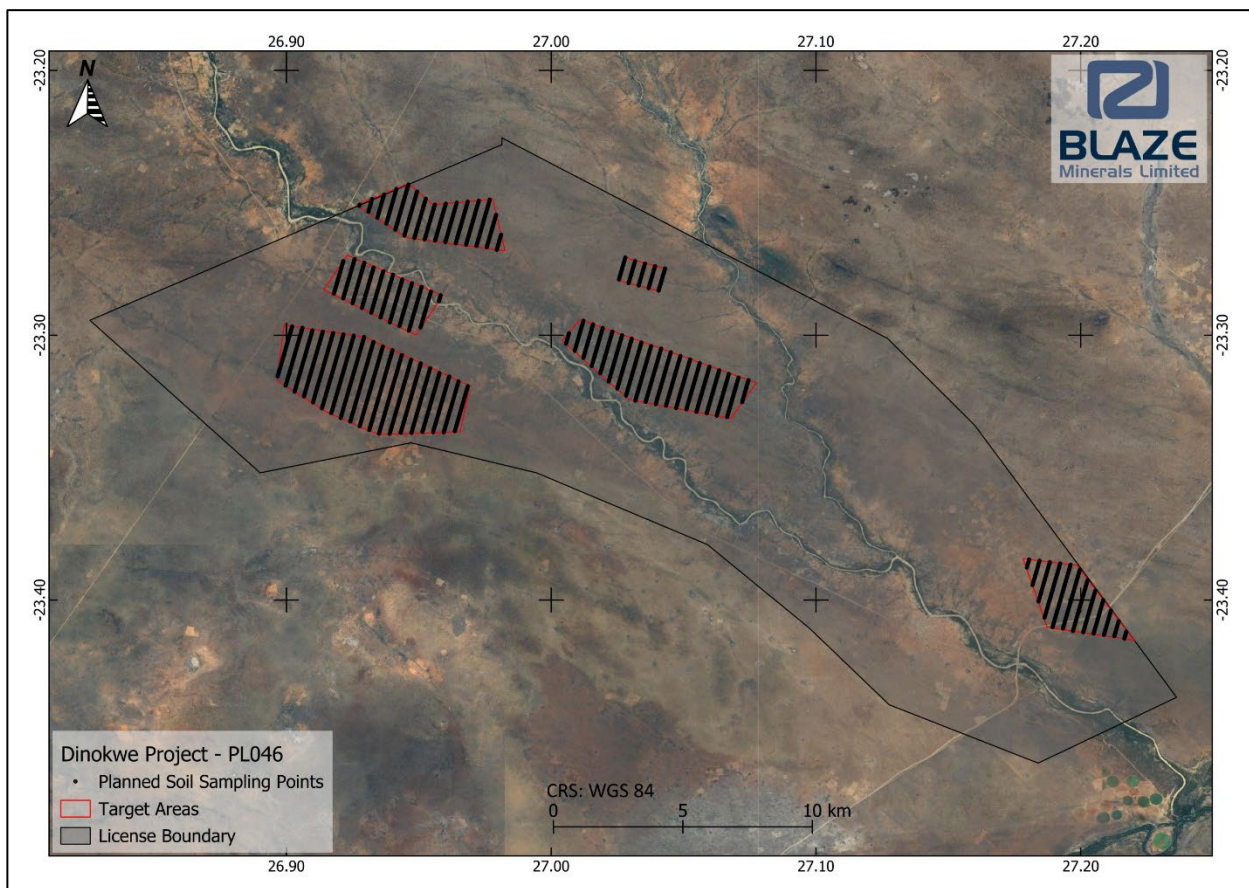


Figure 1: Map showing the planned soil sample locations on PL0046.

² https://premiumnickel.p8.adnetcms.com/site/assets/files/7331/selebi_ni_43-101_mre_technical_report_2024.pdf

³ ALB ASX Announcement dated 30 April 2008: <https://announcements.asx.com.au/asxpdf/20080430/pdf/318v1k6lc35dxc.pdf>





ASX: BLZ

ASX ANNOUNCEMENT
31 MARCH 2026



Figure 2: Soil sampling team.

- ENDS -

This announcement has been authorised for release by the Board of Blaze Minerals Limited.

Mathew Walker
Managing Director
Blaze Minerals Limited





ASX: BLZ

ASX ANNOUNCEMENT
31 MARCH 2026

About Blaze Minerals

Blaze Minerals is a mineral exploration company focussed on identifying and developing high-margin, high-grade, and high-value ore deposits in highly prospective regions.

The Company has entered an agreement to acquire an interest in three projects in Botswana:

- **Dinokwe Copper Project:** The Dinokwe Project comprises 3 granted prospecting licenses and 1 application covering ~1771km² within the Limpopo Mobile Belt which is considered prospective for nickel-copper-PGE mineralisation.
- **The Kalahari Project:** The Kalahari Project includes 4 applications covering ~2968km² within and adjacent to the Kalahari Copper Belt which is considered prospective for copper-silver mineralisation.
- **The Molopo Project:** The Molopo Project comprises 2 applications covering ~212km² over the Molopo Farms Complex which is considered prospective for nickel-copper-PGE mineralisation.

The Company has two projects in Uganda:

- **Ntungamo Project, Uganda:** The Ntungamo Project is adjacent to the Mwirasandu Mine, the largest producing tin mine in Uganda, and highly prospective for critical minerals such as gallium and rubidium.
- **Mityana Project, Uganda:** The Mityana Project is the site of a historic open-cut tantalite mine.

Directors	BLZ Issued Capital
David Prentice	2,875,000,000 Ordinary Shares
Chairman	555,220,877 ("BLZO") Quoted options exercisable at \$0.01 on or before 31 December 2027
Mathew Walker	
Managing Director	400,000,000 ("BLZOPT4/BLZAB") Unquoted options exercisable at \$0.005 on or before 30 November 2027
Simon Coxhell	
Non-Executive Director	

