

PINNACLE WELL PROJECT

Geophysics at Pyrophyllite Hill has now defined a 600m-long chargeable-resistive feature aligned with alteration and geochemical anomalies-pointing to a quality gold target from 75m to 400m depth.

Legend is progressing to ground validation and preparation for drilling.

INVESTOR PRESENTATION

MARCH 2026

See Legend's Exploration Results in announcements released to ASX on 2 July 2025, 1 August 2025, 5 November 2025, 8 December 2025, 10 February 2026, 16 February 2026 and 23 March 2026 for full details

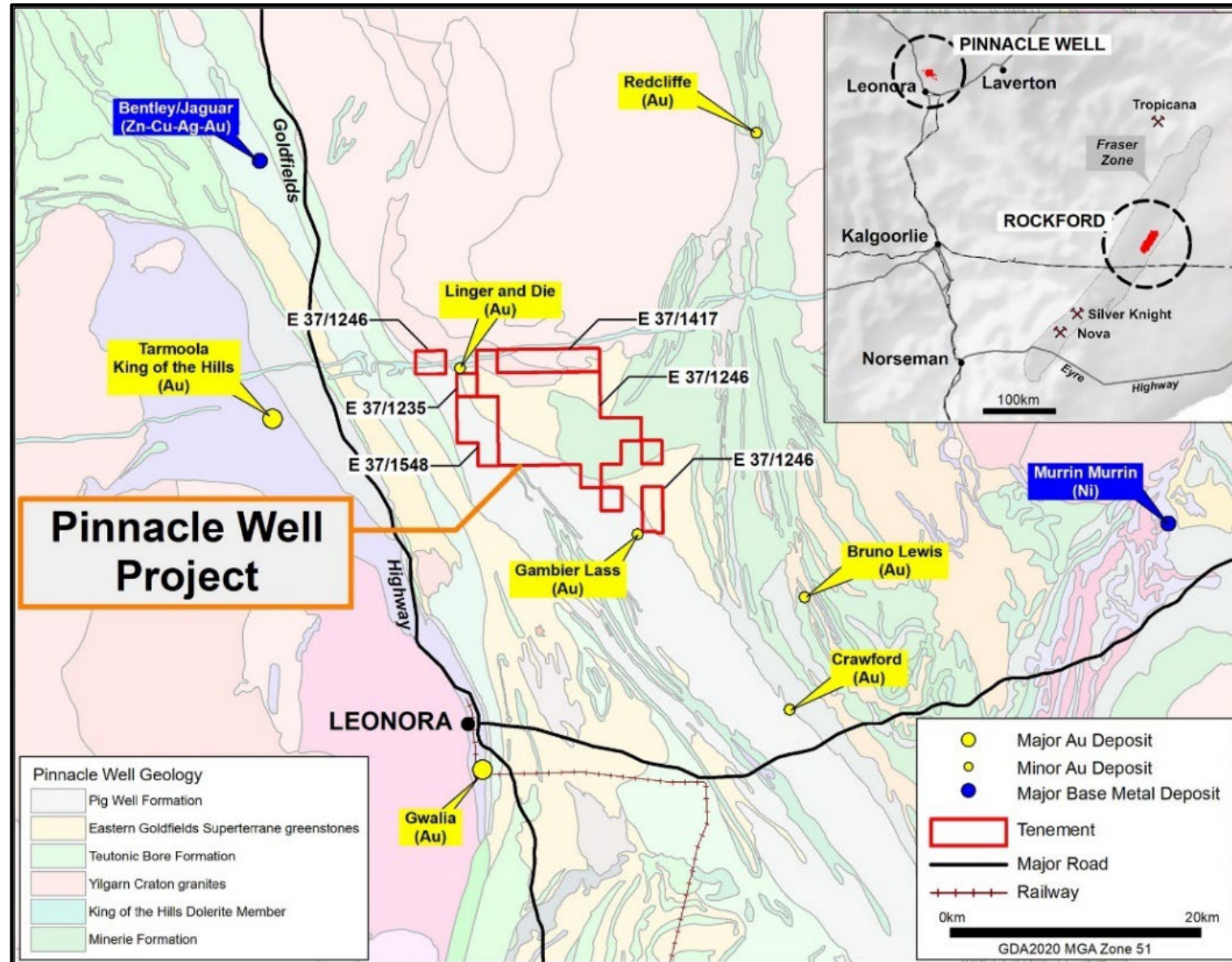


PINNACLE WELL PROJECT - Summary

- Project located 25km NNE Leonora
- Four exploration licences 128km²
- ROFR over “Linger and Die” goldfield
- \$205K purchase price 100%

Within well mineralised Leonora District

- Gwalia (+6Moz Au)
- King of the Hills (+4Moz Au)
- Bentley/Jaguar (Zn-Cu-Ag)



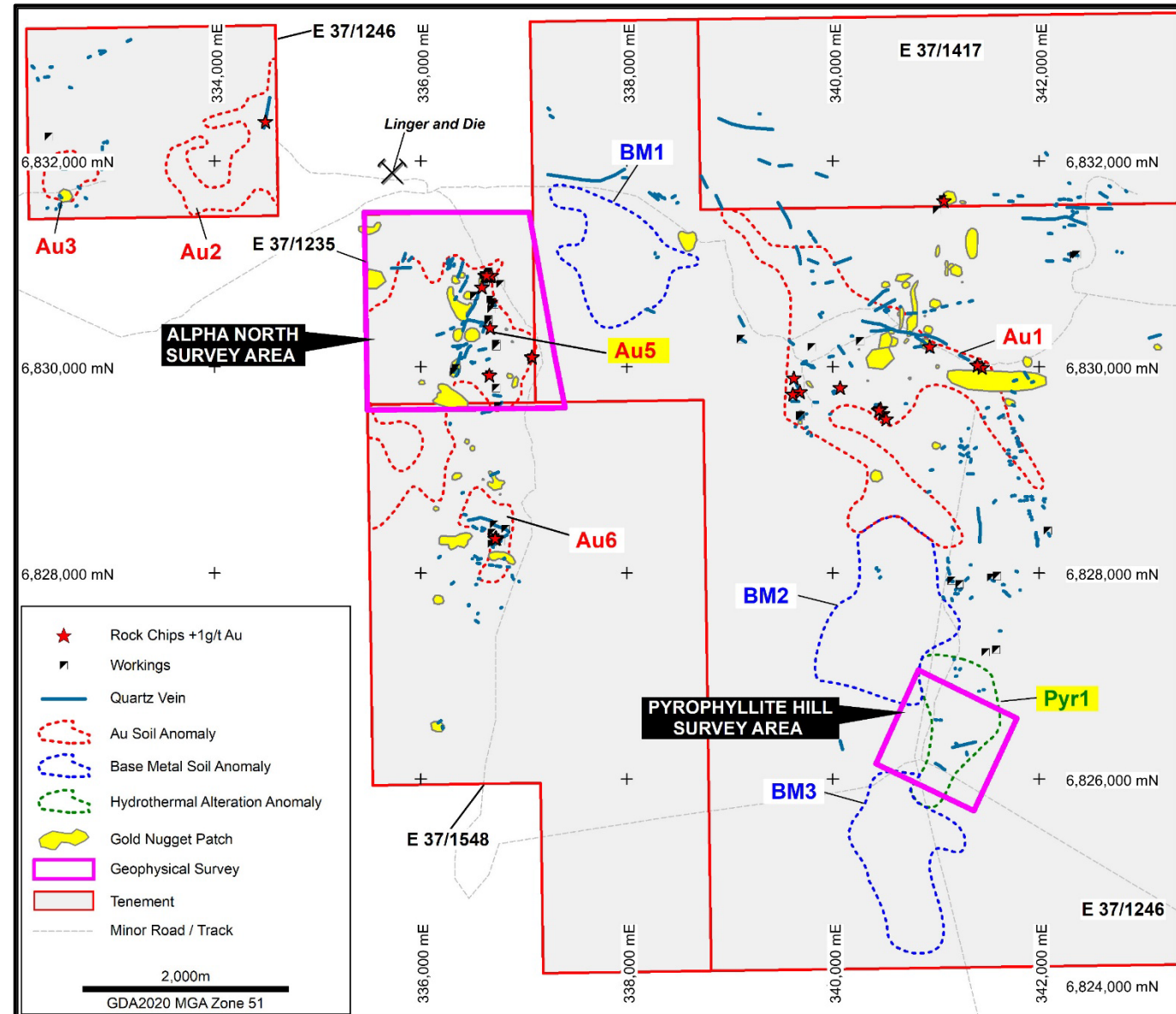
PINNACLE WELL PROJECT – Key Prospects

Pyrophyllite Hill

- Strong hydrothermal pyrophyllite alteration
- Halo around mineralised intrusions
 - Au-Cu porphyries
 - Epithermal Au systems

Alpha North

- Gold mineralisation related to:
 - Intrusions (GSWA “sanukitoid”)
 - Structurally-controlled
 - Quartz vein hosted



Pinnacle Well Project – Pyrophyllite Hill

Geology

- Large pyrophyllite alteration zone
- Alteration within regional NW-SE structural corridor

Soil Geochemistry (UFF soil)

- Strong hydrothermal signature – Pyr1
- Elevated central core of Pyr1 coincides with IP feature

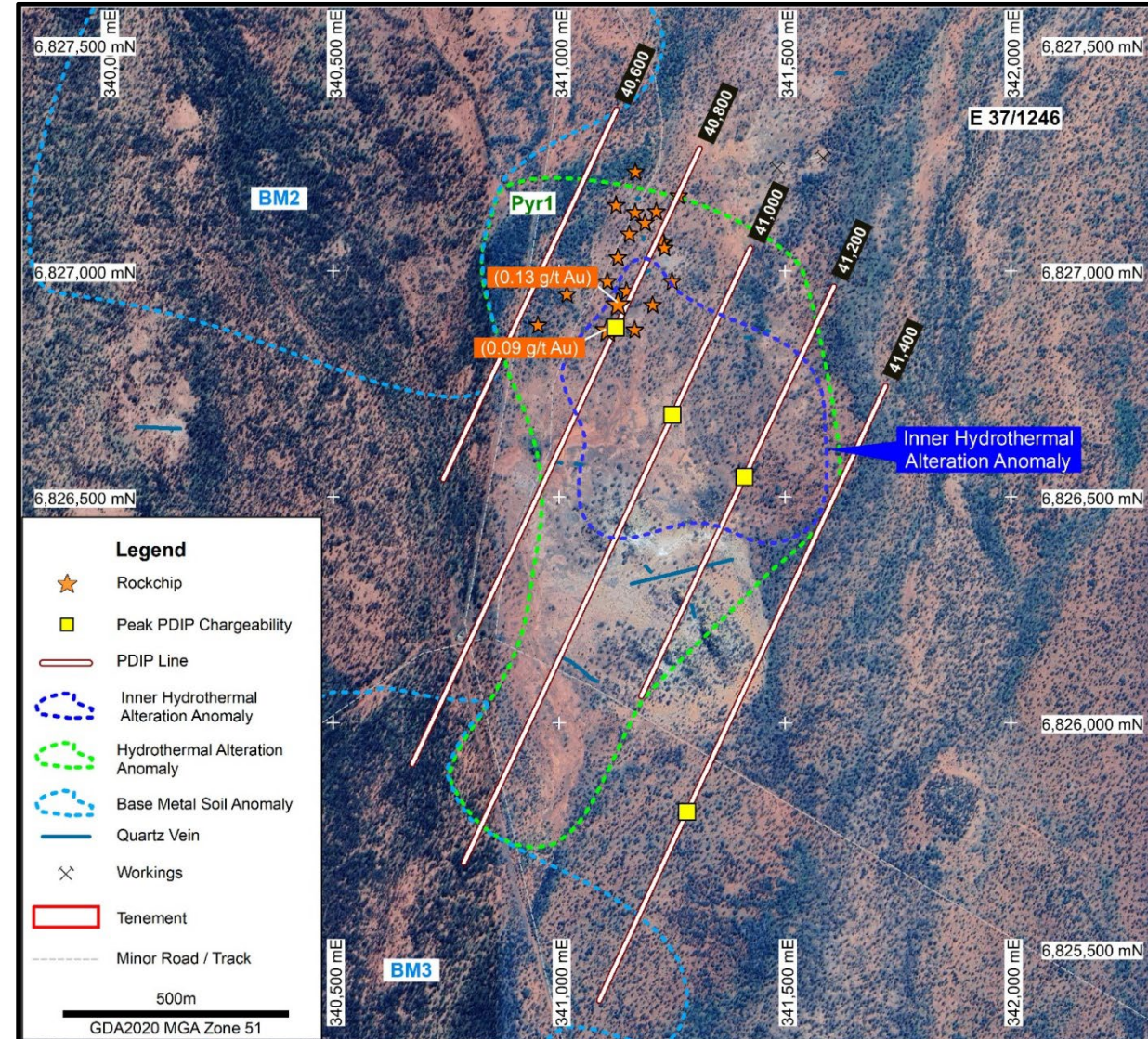
Geophysics

- ~600m chargeable-resistive IP feature defined
- Interpreted as sulphide (high chargeability) with silica alteration and/or quartz veining (high resistivity)
- Depth to anomaly 75-350m

Rockchip Geochemistry (historic)

- Gold values of 0.13g/t Au & 0.09g/t Au near IP feature
- Limited subcrop and float in area of IP feature

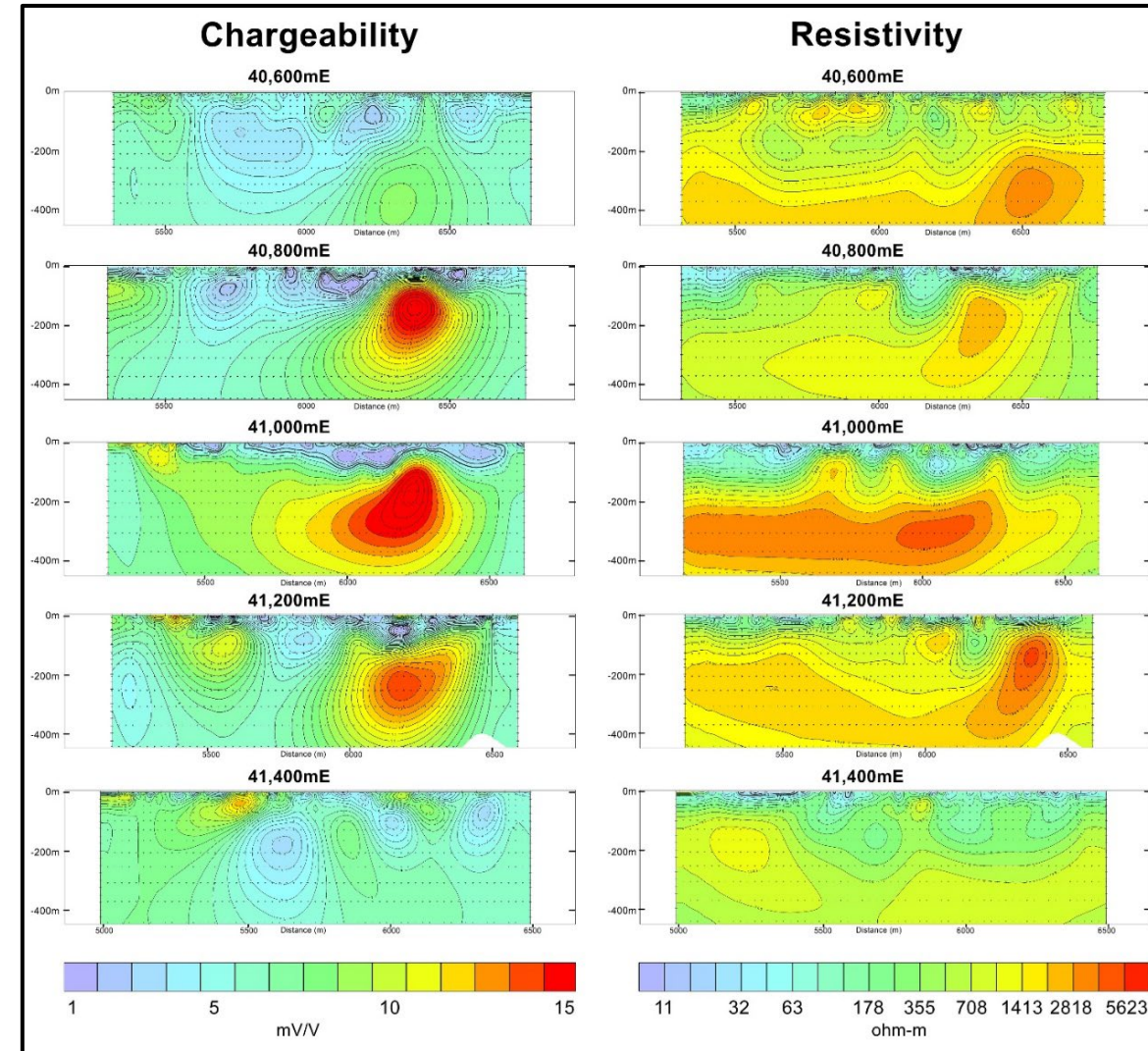
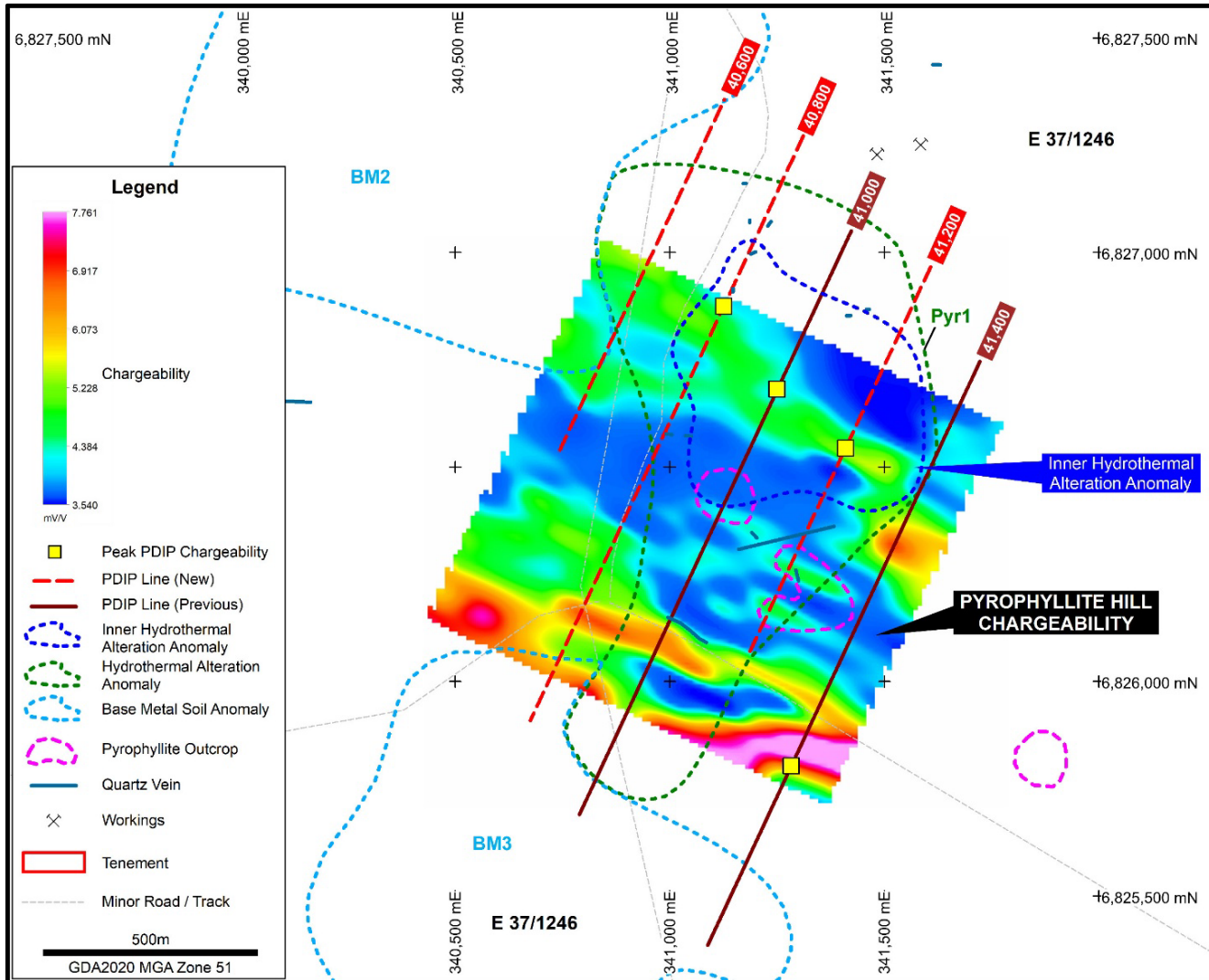
PDIP, Rockchips, Soil Anomaly (hydrothermal-pyrophyllite)



Pinnacle Well Project – Pyrophyllite Hill

PDIP, Soil Anomaly (hydrothermal-pyrophyllite)

Pole-Dipole IP – Inversion Models



Pinnacle Well Project – Alpha North

Geology

- Extensive (3km) of quartz veining in hornblende granodiorite (sanukitoid)
- Old workings and extensive gold nugget patches
- Key contact on eastern granodiorite margin

Rockchip Geochemistry (Legend & historic)

- Historic gold values of 91.9, 64.1, 39.0g/t Au
- 10 samples >1.0g/t Au, 35 > 0.1g/t Au

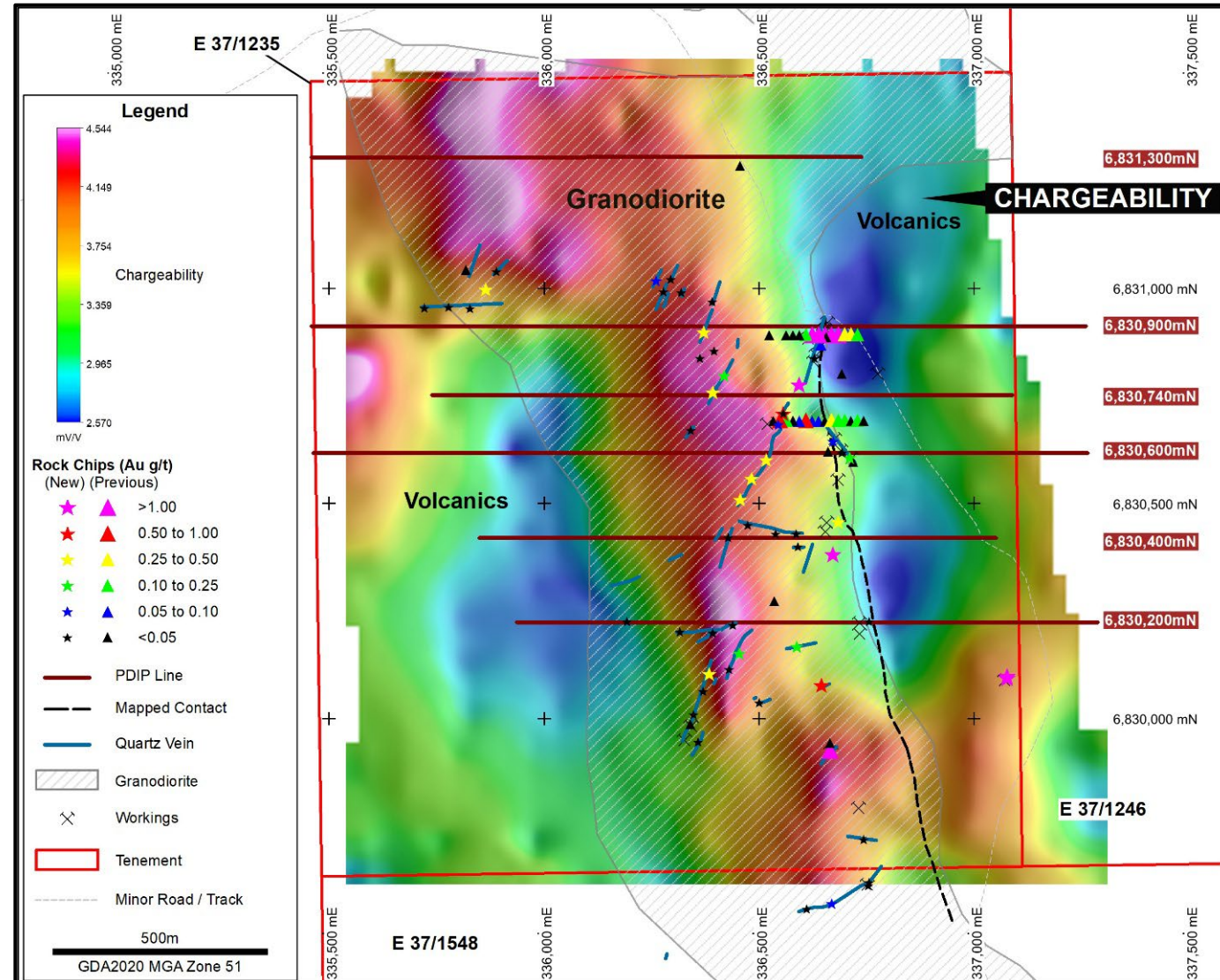
Soil Geochemistry (UFF soil)

- Strong gold signature – Au5 anomaly

Geophysics

- ~700m chargeable-resistive IP feature defined
- Interpreted as sulphide (high chargeability) within hornblende granodiorite (resistivity)
- Depth to anomaly 75-200m

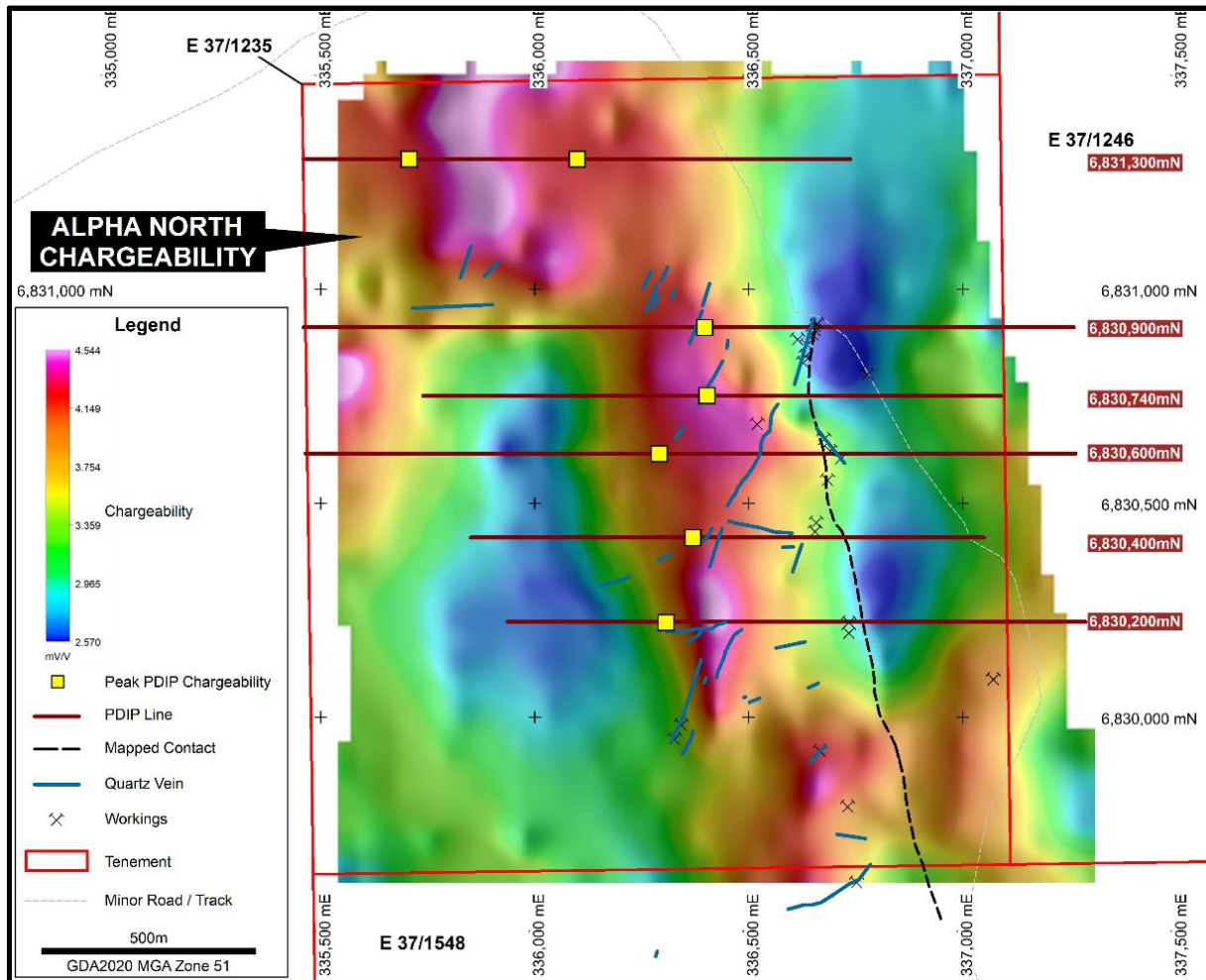
PDIP, Rockchips, Soil Anomaly (hydrothermal-pyrophyllite)



Pinnacle Well Project – Alpha North

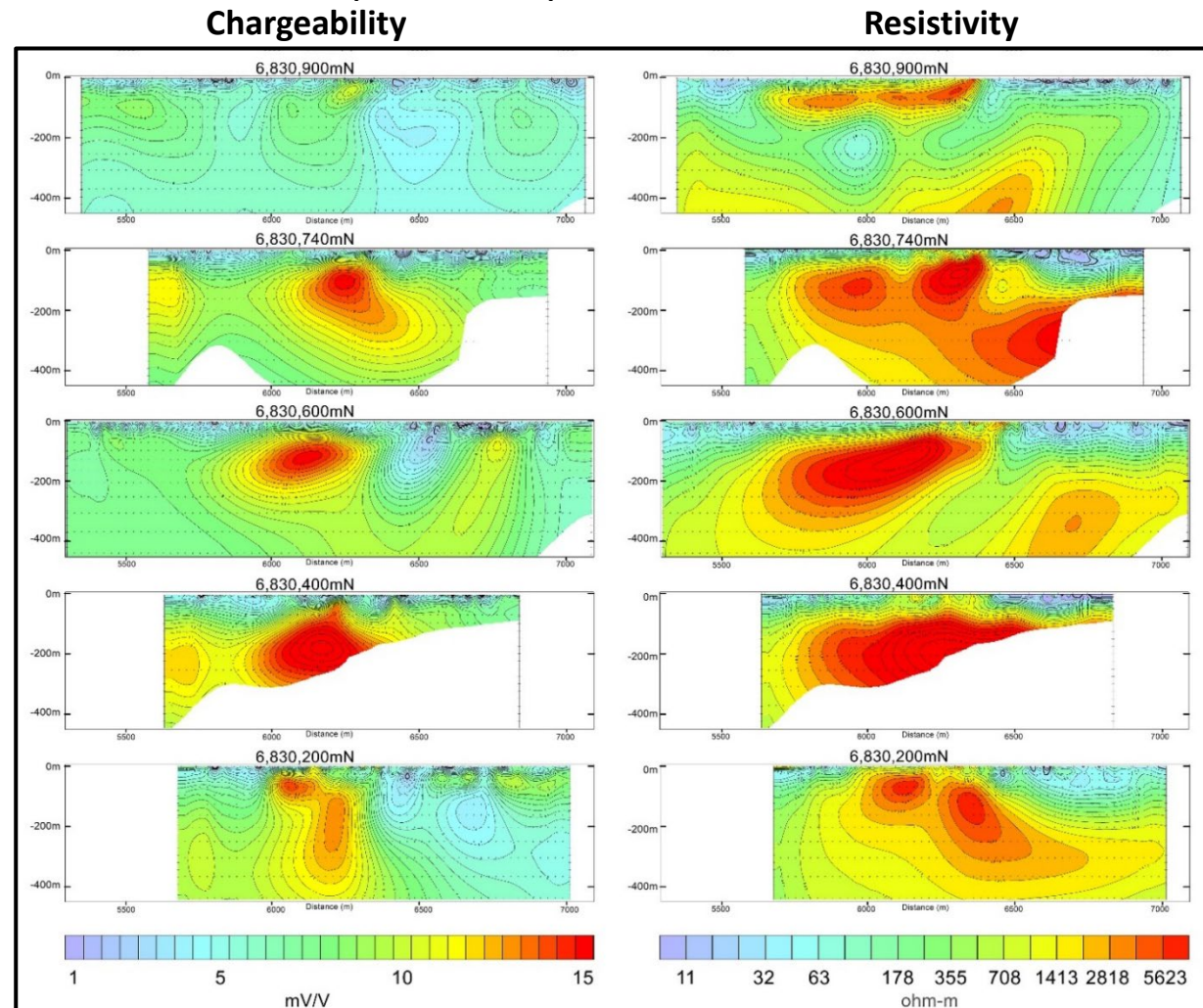
Gradient Array IP – Chargeability

Sulphides, clay alteration, faults



Pole-Dipole IP – Inversion Models

Sulphides & quartz veins/silicification



PINNACLE WELL PROJECT – Future Exploration

Pyrophyllite Hill

- Reconnaissance mapping and soil/rockchip sampling over 600m IP feature
- 3D IP modelling of chargeable-resistive feature
- RC drillhole design
- Heritage survey
- Drill

Alpha North

- Ground truthing IP features
- 3D IP modelling of chargeable features
- RC drillhole design
- Heritage survey
- Drill



Pyrophyllite outcrop

Disclaimer

- This is not a disclosure document. Any material used in this presentation is a summary of selected data, and any investor in Legend Mining Limited should refer to all Legend Mining Limited ASX releases and statutory reports before considering to invest in the company. Any forward-looking information in this presentation has been prepared on the basis of a number of assumptions that may prove not to be correct. Neither Legend Mining Limited, nor its officers, employees and advisors make or give any representation, warranty or guarantee in relation to this presentation. Legend Mining Limited reserves the right to update, amend or supplement the Information in this presentation at any time in its absolute discretion without incurring any obligation to do so*

Competent Person Statement

- The information in this presentation that relates to Legend's Exploration Results is a compilation of previously released to ASX by Legend Mining (2 July 2025, 1 August 2025, 5 November 2025, 8 December 2025, 10 February 2026, 16 February 2026 and 23 March 2026) ("ASX Announcements"). The information in these ASX announcements that relates to Exploration Results is based on information compiled by Mr Derek Waterfield. Mr Waterfield is a Member of the Australian Institute of Geoscientists and a full time employee of Legend Mining Limited. Mr Waterfield has sufficient experience that is relevant to the styles of mineralisation and types of deposit under consideration, and to the activity being undertaken, to qualify as a Competent Person as defined in the 2012 Edition of the "Australasian Code for Reporting of Exploration Results, Mineral Resources and Ore Reserves" (JORC Code). Mr Waterfield consents to the inclusion of these Results in this presentation. Mr Waterfield has advised that this consent remains in place for subsequent releases by Legend of the same information in the same form and context, until the consent is withdrawn or replaced by a subsequent report and accompanying consent.*
- Legend confirms that it is not aware of any new information or data that materially affects the information included in the original ASX Announcements and that all material assumptions and technical parameters in the ASX Announcements continue to apply and have not materially changed. Legend confirms that the form and context in which the Competent Person's findings are presented have not been materially modified from the original market announcements.*

Forward Looking Statements

- This is not a disclosure document. Any material used in this presentation is a summary of selected data, and any investor in Legend Mining Limited should refer to all Legend Mining Limited ASX releases and statutory reports before considering to invest in the company. Any forward-looking information in this presentation has been prepared on the basis of a number of assumptions that may prove not to be correct. Neither Legend Mining Limited, nor its officers, employees and advisors make or give any representation, warranty or guarantee in relation to this presentation. Legend Mining Limited reserves the right to update, amend or supplement the Information in this presentation at any time in its absolute discretion without incurring any obligation to do so. This presentation contains "forward-looking statements" within the meaning of securities laws of applicable jurisdictions. Forward-looking statements can generally be identified by the use of forward-looking words such as "may", "will", "expect", "intend", "plan", "estimate", "anticipate", "believe", "continue", "objectives", "outlook", "guidance" or other similar words, and include statements regarding certain plans, strategies and objectives of management and expected financial performance. Forward-looking statements are provided as a general guide only and should not be relied upon as an indication or guarantee of future performance.*
- These forward-looking statements are based upon a number of estimates, assumptions and expectations that, while considered to be reasonable by Legend Mining Limited, are inherently subject to significant uncertainties and contingencies, involve known and unknown risks, uncertainties and other factors, many of which are outside the control of Legend Mining Limited and any of its officers, employees, agents or associates. Actual results, performance or achievements may vary materially from any projections and forward-looking statements and the assumptions on which those statements are based.*
- Exploration potential is conceptual in nature, to date there has been insufficient exploration to define a Mineral Resource, and it is uncertain if further exploration will result in the determination of a Mineral Resource. Readers are cautioned not to place undue reliance on forward-looking statements and Legend Mining Limited assumes no obligation to update such information made in this announcement, to reflect the circumstances or events after the date of this announcement.*

Important Notice

- This Presentation does not constitute an offer to acquire or sell or a solicitation of an offer to sell or purchase any securities in any jurisdiction. In particular, this Presentation does not constitute an offer, solicitation or sale to any U.S. person or in the United States or any state or jurisdiction in which such an offer, tender offer, solicitation or sale would be unlawful. The securities referred to herein have not been and will not be registered under the United States Securities Act of 1933, as amended (the "Securities Act"), and neither such securities nor any interest or participation therein may not be offered, or sold, pledged or otherwise transferred, directly or indirectly, in the United States or to any U.S. person absent registration or an available exemption from, or a transaction not subject to, registration under the United States Securities Act of 1933.*