

AGC AUSTRALIAN
GOLD AND
COPPER

GOLD COAST
Gold

A Silver & Gold Growth Story

Discover, Nurture, Enhance


AMEC
2025 MEMBER
ASSOCIATION OF MINING
AND EXPLORATION COMPANIES

ASX: AGC

25 March 2026

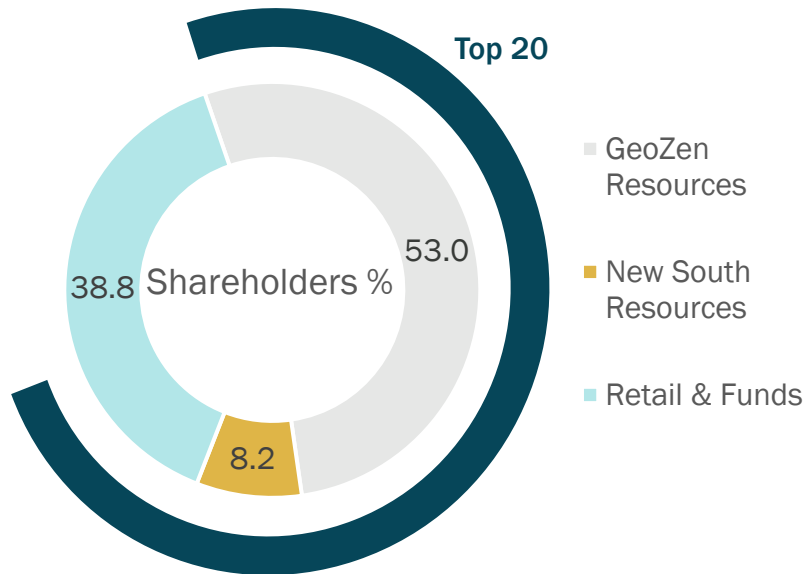


Lake Cargelligo NSW

Introduction & Overview

Capital Structure

Date	25 th March 2026
Cash (at 31 December 2025)	\$8.3 million
Shares on Issue	269 million
Market Capitalisation	ca\$43 million
Options	7.5m Options (\$0.48 strike price)



Broker Coverage



Who are AGC? We are:

- 1 A silver-gold base-metal explorer who made a greenfields discovery that continues to grow in scale and quality
- 2 Executing on a clear pathway to building a major, east coast, precious metal company
- 3 Well funded and enjoy enthusiastic major shareholders GeoZen & New South Resources
- 4 Located in the Cobar mining district & 100km west of Tier 1 Cowal Gold Mine (ASX:EVN) – with skilled local population and supportive local governments



The AGC Leadership Team

Founder of GeoZen Mining Group Corporation Ltd and AGC's largest shareholder

Mr Zhang Yong Chairman



Adam McKinnon Non-Executive Director

Adam is an experienced mining and geoscience professional with a proven track record in the Cobar Basin of NSW as Ex-General Manager – Exploration and Business Development at Aurelia Metals Ltd, where he was involved in several significant discoveries including the high-grade Federation deposit. With KBL Mining, Adam led the exploration of the discovery of the Pearse Au-Ag deposit near the Mineral Hill Mine. Adam is currently MD of Advance Metals Limited and holds a PhD in mineralogy and geochemistry, is a Chartered Chemist and a member of the AusIMM.

Pan (Joe) Yang Non-Executive Director

Mr Yang brings considerable experience in strategy, finance, M&A, construction and operations having previous high-level roles for the China National Chemical Corporation, a Fortune 500 company. He oversaw the construction and management of several major factories in both China and England, where he spent three years in London. Mr Yang is currently the CEO of GeoZen Resources, who made a significant investment in AGC in December 2023 and participated pro-rata in the 2024 placement to maintain their 55% holding in AGC. Mr Yang holds a PhD in chemical engineering from the Beijing University of Chemical Technology.



Glen Diemar Managing Director

Early-stage discoveries focused Geologist in NSW mineral systems. Passionate and persistent. Lead the discovery of the Achilles deposit, NSW. Previous roles including BHP Billiton, Indonesia, Kyrgyzstan, and most recently was CEO of successful private explorer, New South Resources PL, negotiating and operating JV's with Freeport and Newmont and was responsible for identifying and developing the projects vended into AGC Ltd. He holds BSc honors in geochemistry and a Masters of Economic Geology and is a member of the AIG.



Rowan Caren Chief Financial Officer & Company Secretary

Mr. Caren holds a Bachelor of Commerce and is a Chartered Accountant (CA ANZ). He is a highly experienced mining executive with a focus on finance, governance, strategic development, capital markets, and operational execution. With over three decades in the industry, he has played a key managerial and leadership role in significant resources projects across Australia and Southeast Asia. His appointment supports AGC's growth strategy at the South Cobar Project in NSW.



Limiting Corporate Overheads

No corporate headquarters

Regional exploration office

Allowing more shareholder funds spent in the ground



Executing Plan for Significant Inventory Growth

South Cobar Work Plan

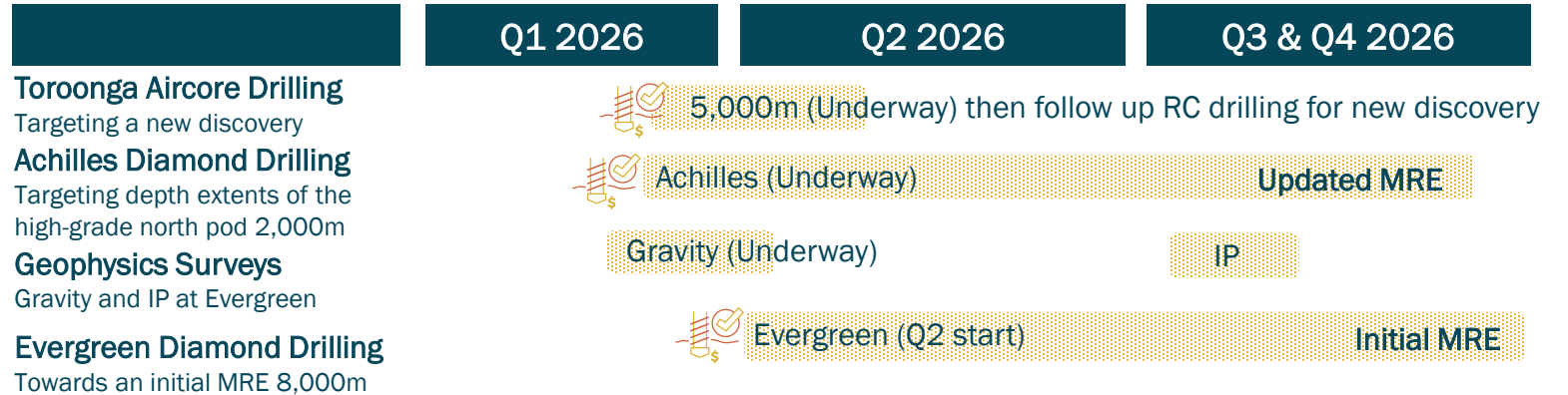
5,000m AC for a new discovery at Tooronga, South Cobar

2,000m DD Depth extensions underway towards updated MRE at Achilles

Geophysics gravity survey Evergreen

8,000m DD starting next month towards initial MRE at Evergreen

Follow up RC drilling Tooronga



Minerals to enhance our local communities

Lake Cargelligo - A Welcoming Community in Central NSW



Strong sporting district



Population 1,200



Cropping and grazing



Centrally located to South Cobar Project



Young energetic skilled work force



Established mining workforce, workers DIDO to Cowal Gold Operation, Cobar mines: CSA, Federation, Peak, Elura



Excellent infrastructure surrounding project, power, gas, water, rail, hospital, airport



South Cobar Project

South Cobar Project

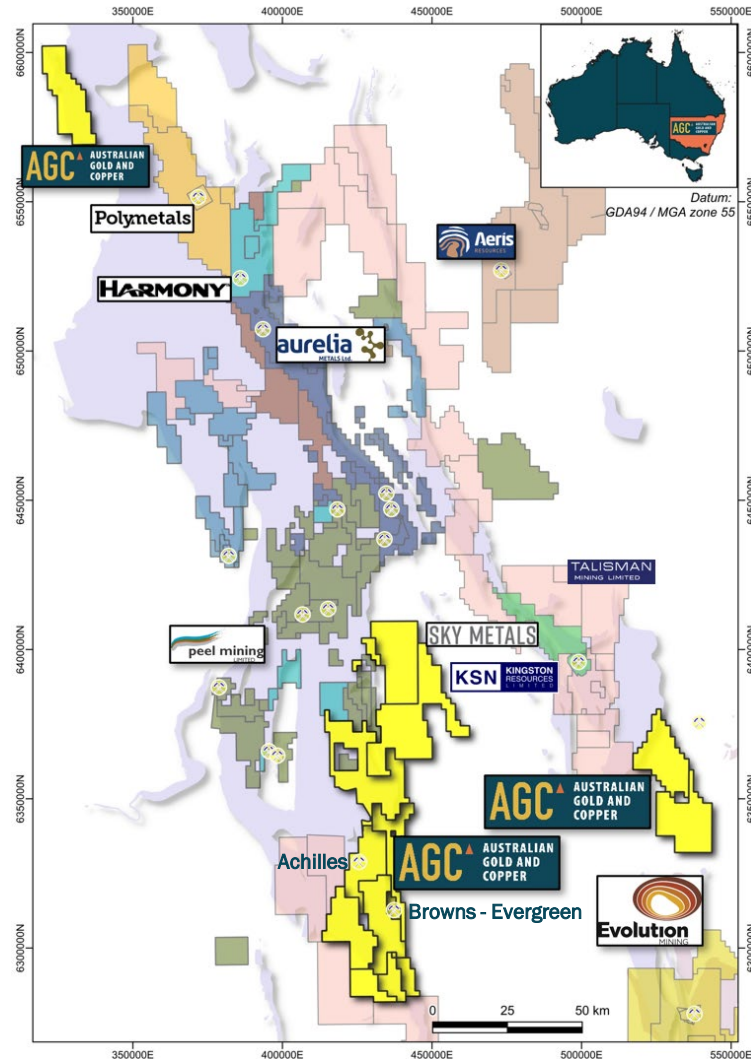
AGC AUSTRALIAN GOLD AND COPPER

“We are systematically delineating a previously underexplored domain within a mature mining belt.”

The Cobar Superbasin

- ✓ Mature mines in the north, dating back to 1870, CSA is 3rd highest grade copper mine globally
- ✓ Recent success stories, ASX AMI Federation¹, ASX:POL Polymetals Endeavor mine restart², ASX:PEX takeover by ASX:AIS³
- ✓ AGC is leading belt scale systematic exploration and making new discoveries

AGC's high-grade near surface discovery has validated the South Cobar District



**32.9g/t Au, 1,490g/t Ag,
1.4% Cu, 27.8% Pb+Zn
216.1-217.0m A3RCD086**

¹ ASX AMI 31 May 2023 Investor Presentation – Federation Financing & Equity Update

² ASX POL 24 June 2025

³ ASX PEX 12 February 2026

Achilles Gold-Silver Deposit

“Initial” Mineral Resource Estimate (MRE) 16 December 2025



A high-quality initial Mineral Resource, with 58% of AgEq ounces in the Indicated category

Indicated Resources

5.0Mt at 141g/t AgEq for 22.5Moz AgEq

Inferred Resources

5.3Mt at 93g/t AgEq for 16.0 Moz AgEq

Shallow Resources

“Open pit” Resources

7.9Mt at 114g/t AgEq for 28.7 Moz AgEq

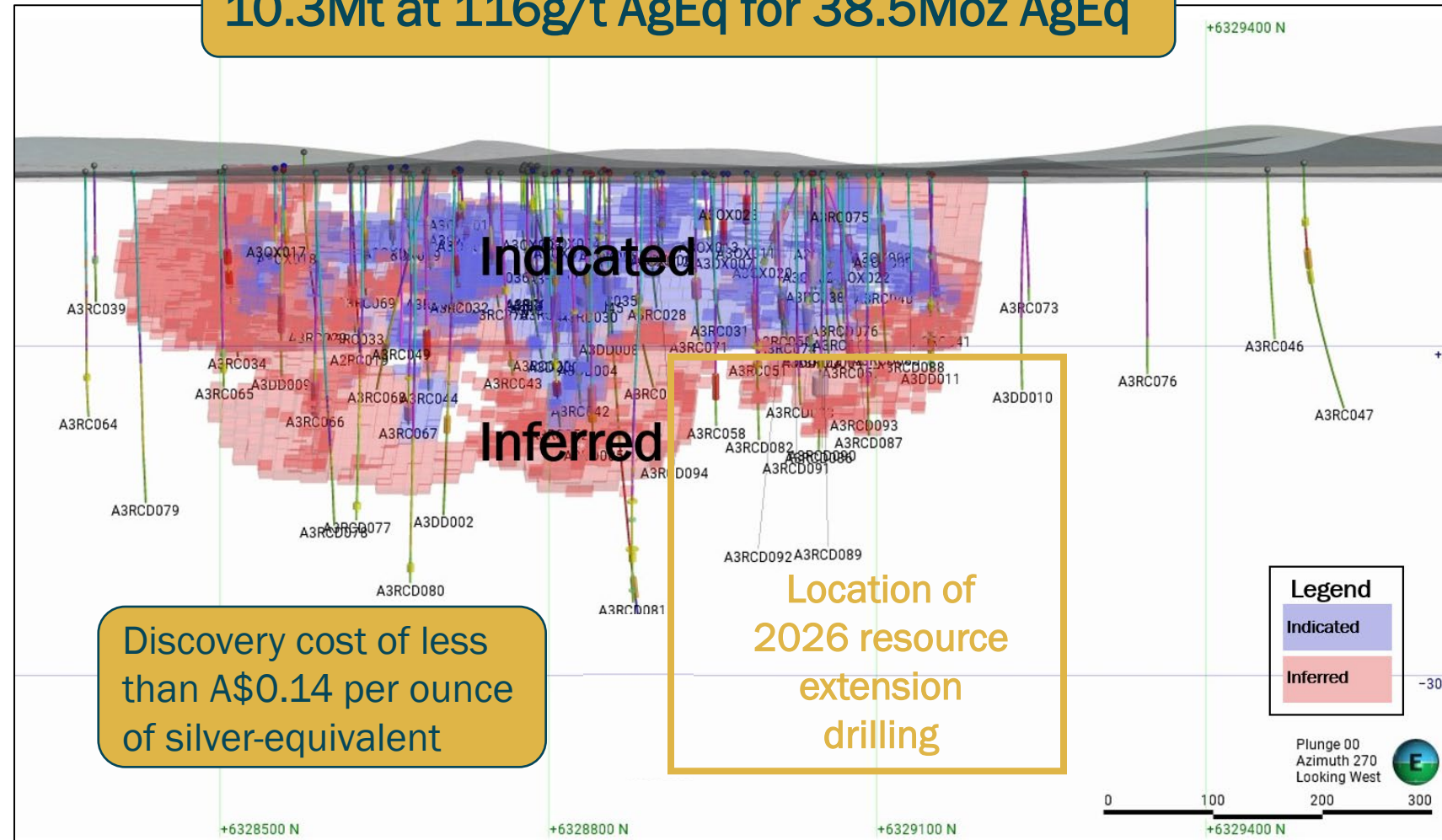
“Underground” Resources

2.4Mt at 125g/t AgEq for 9.8Moz AgEq

“open pit” cutoff grade of 40g/t AgEq to 0mRL,

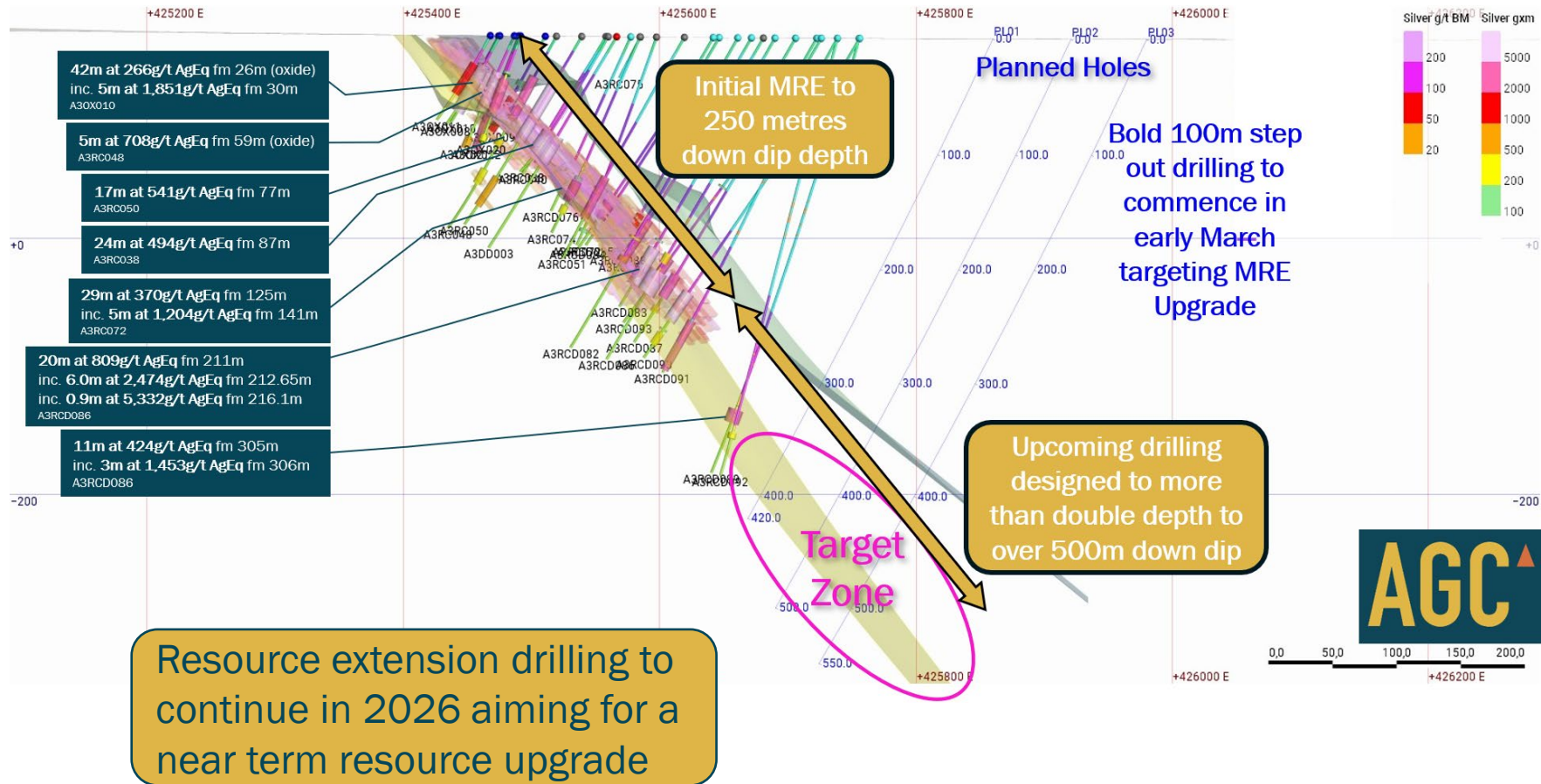
“underground” cutoff grade of 80g/t AgEq

10.3Mt at 116g/t AgEq for 38.5Moz AgEq



Achilles Gold-Silver Deposit

High-grade mineralisation from surface to 350m and open below MRE



6m at 11.0g/t Au, 942g/t Ag, 0.8% Cu & 17.9% Pb+Zn; 2,474g/t AgEq from 212.65m Massive zinc-sphalerite A3RCD086

ASX AGC Release 1 December 2025

Belt Scale Consolidation

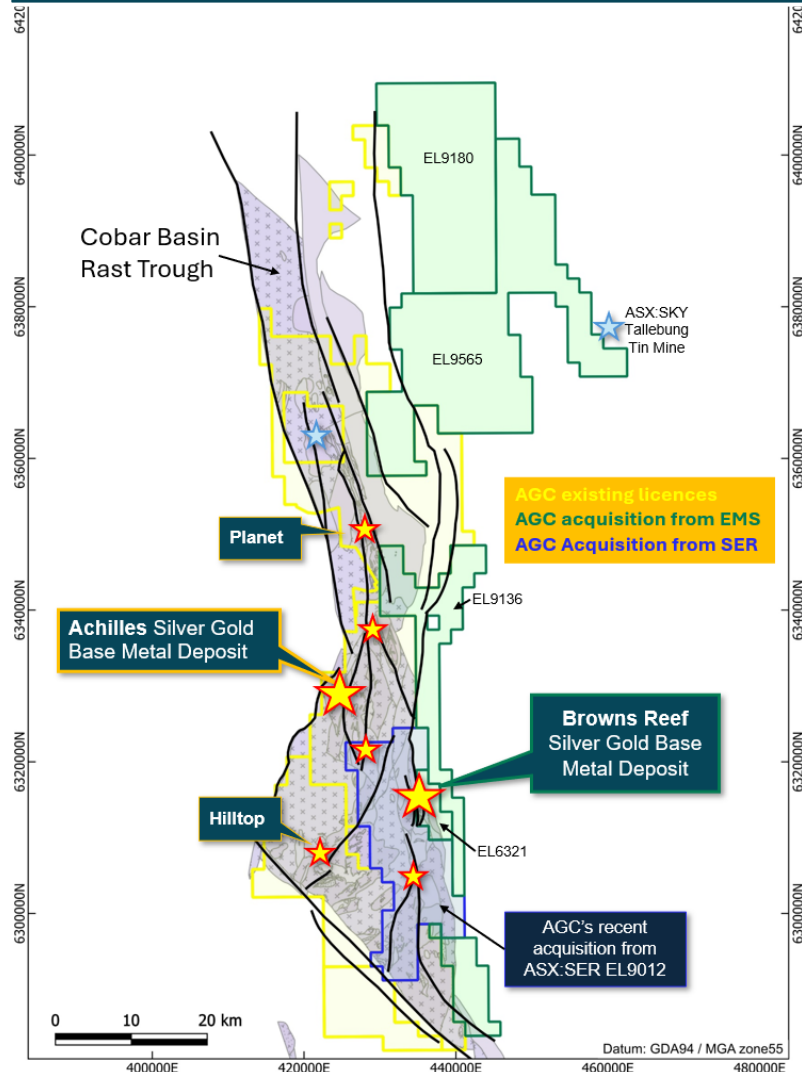
In 2025, we completed two value-accretive acquisitions, establishing a dominant landholding position across the belt.

Total consideration: \$1.9 million.

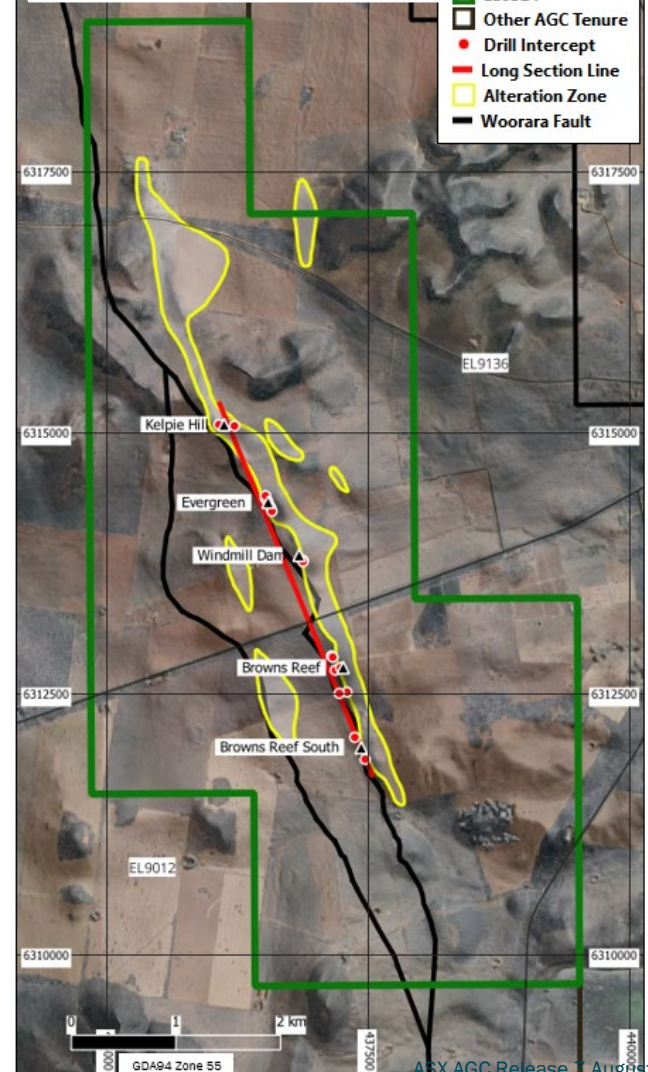
This included the 6.5 km long Browns–Evergreen silver–gold–base metal system, originally discovered in the 1970s, with approximately 25 km of historic drilling; no JORC-compliant resource has been declared.

In the current quarter, AGC will commence drilling aimed at supporting an initial Mineral Resource Estimate at the Evergreen silver–gold–base metal deposit in 2026.

AGC Consolidates entire South Cobar Basin

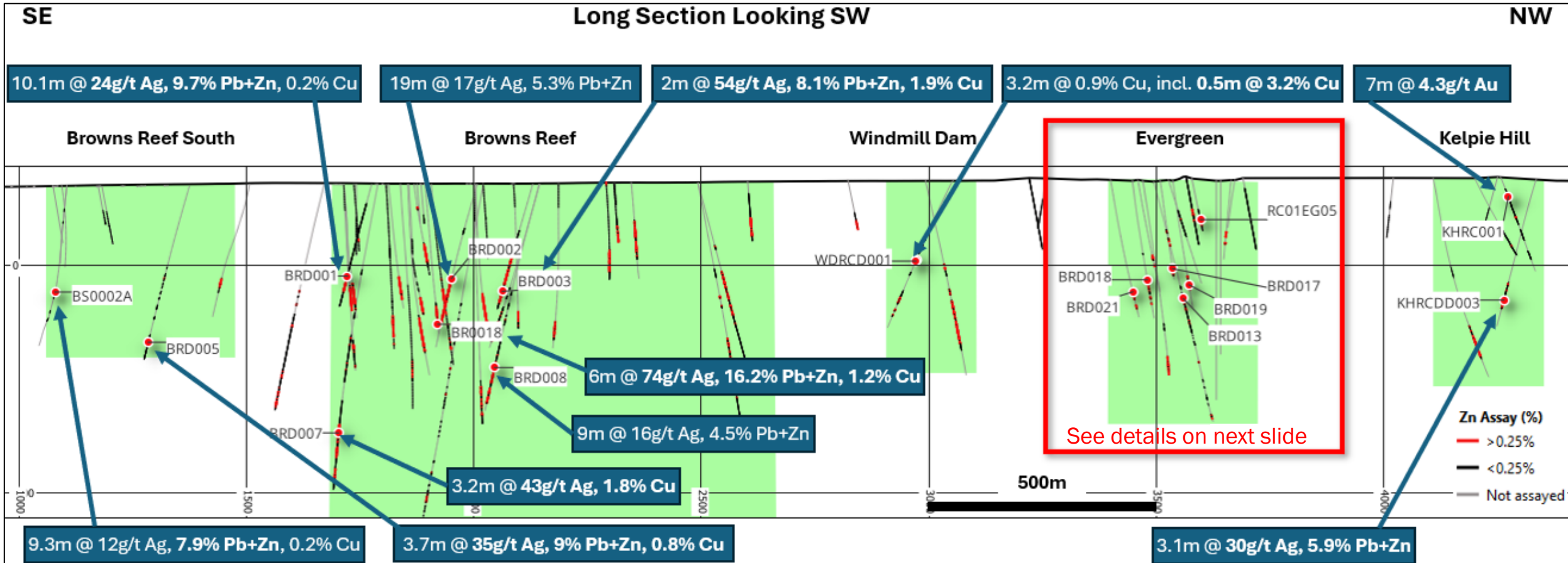


Browns – Evergreen Deposit



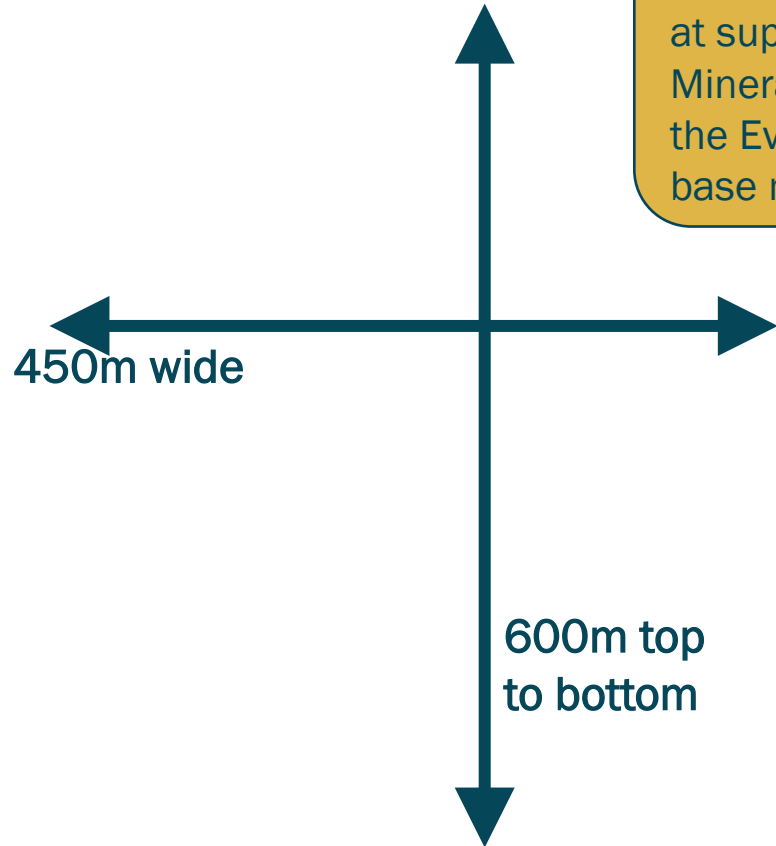
Belt Scale Consolidation

Browns–Evergreen has delivered strong silver, gold and base-metal drill intercepts and defined multiple high-quality drill targets; no JORC-compliant resource has yet been declared



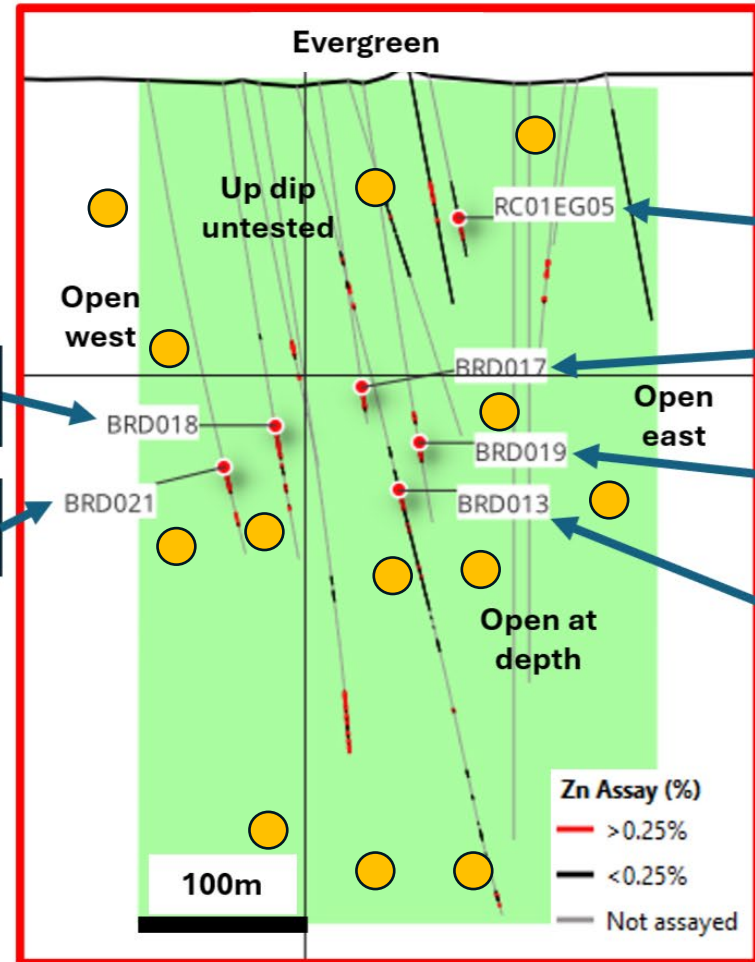
Evergreen Drill Plan for Initial MRE

In the current quarter, AGC will commence drilling aimed at supporting an initial Mineral Resource Estimate at the Evergreen silver-gold-base metal deposit in 2026



16m @ 0.4g/t Au, 28g/t Ag, 5.7% Pb+Zn, 0.3% Cu

16m @ 0.3g/t Au, 12g/t Ag, 6.1% Pb+Zn, 0.1% Cu



2m @ 1.4g/t Au, 15g/t Ag, 9.6% Pb+Zn

13m @ 0.9g/t Au, 12g/t Ag, 7.7% Pb+Zn, 0.1% Cu

12.5m @ 0.5g/t Au, 17g/t Ag, 10.7% Pb+Zn, 0.1% Cu

7m @ 0.5g/t Au, 20g/t Ag, 7.8% Pb+Zn, 0.5% Cu

● Planned drill hole pierce point locations

Conclusions



Jurisdiction

World class polymetallic
mining district



Team

Track record of success



Portfolio Of Advanced Exploration Projects

Capable of hosting
multi-million oz discoveries



Well Funded For Discovery

Strong drilling
focus

Mineral Resource Estimate

Table 1: Achilles Mineral Resource Estimate (AGC ASX 16 December 2025).

Location	Category	Cutoff	Mt	AgEq g/t	Ag g/t	Au g/t	Zn %	Pb %	Moz AgEq
Open pit	Indicated	40	4.7	141	52	0.48	1.0	0.83	21.5
Open pit	Inferred	40	3.2	72	31	0.26	0.4	0.26	7.3
Underground	Indicated	80	0.3	130	62	0.32	0.9	0.54	1.1
Underground	Inferred	80	2.2	124	74	0.31	0.4	0.29	8.8
Combined	All	40-80	10.3	116	51	0.37	0.7	0.53	38.5

Table 2: Mineral Resource Estimate reported by open pit oxide, transition and sulphide and underground sulphide categories (AGC ASX 16 December 2025).

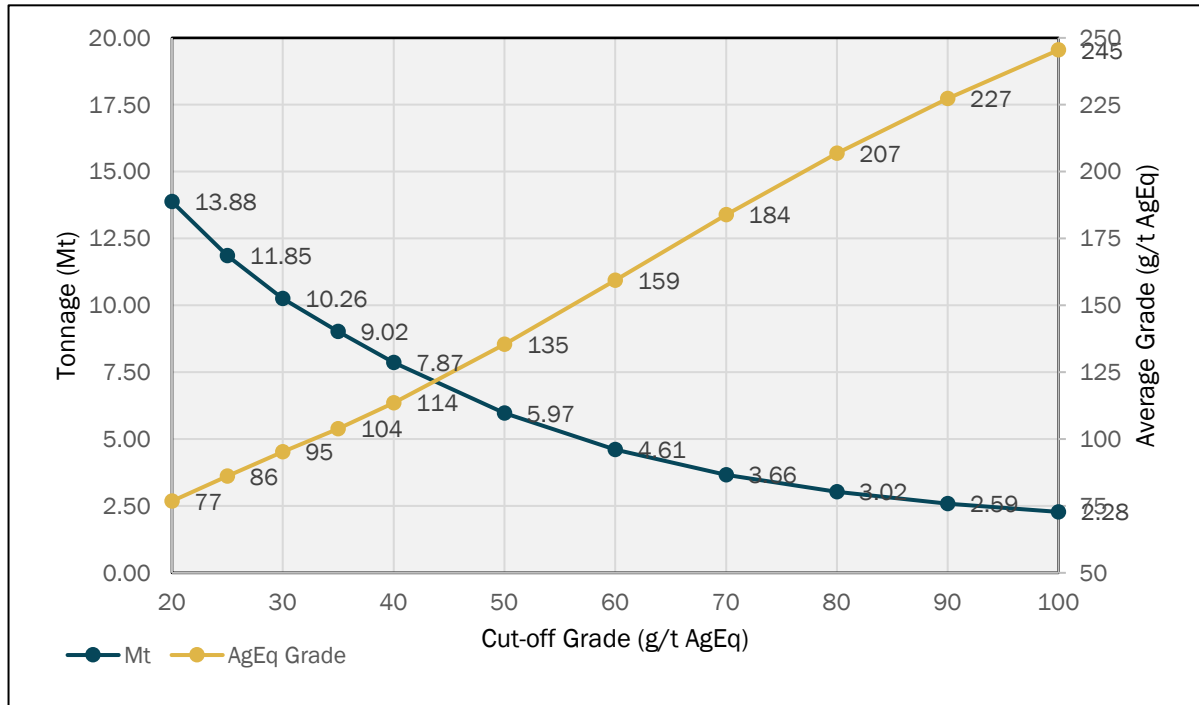
Location	Category	Cutoff	Mt	AgEq g/t	Ag g/t	Au g/t	Zn %	Pb %	Moz AgEq
Open pit	Oxide	40	0.8	81	24	0.49	0.1	0.3	2.0
Open pit	Transition	40	0.9	113	40	0.64	0.1	1.1	3.3
Open pit	Sulphide	40	6.2	118	47	0.34	0.9	0.6	23.5
Underground	Sulphide	80	2.4	125	73	0.31	0.5	0.3	9.8
Total	Total	40-80	10.3	116	51	0.37	0.7	0.5	38.5

The preceding statements of Mineral Resources conform to the Australasian Code for Reporting of Exploration Results, Mineral Resources and Ore Reserves (JORC Code) 2012 Edition. The information in this announcement that relates to the current Mineral Resources for Achilles has been extracted from the ASX release by AGC entitled “Amendment to Initial Mineral Resource Estimate for Achilles Containing 38.5Moz Silver-Equivalent” dated 16 December 2025, available at www.austgoldcopper.com.au and www.asx.com.au (“AGC MRE Announcement”).

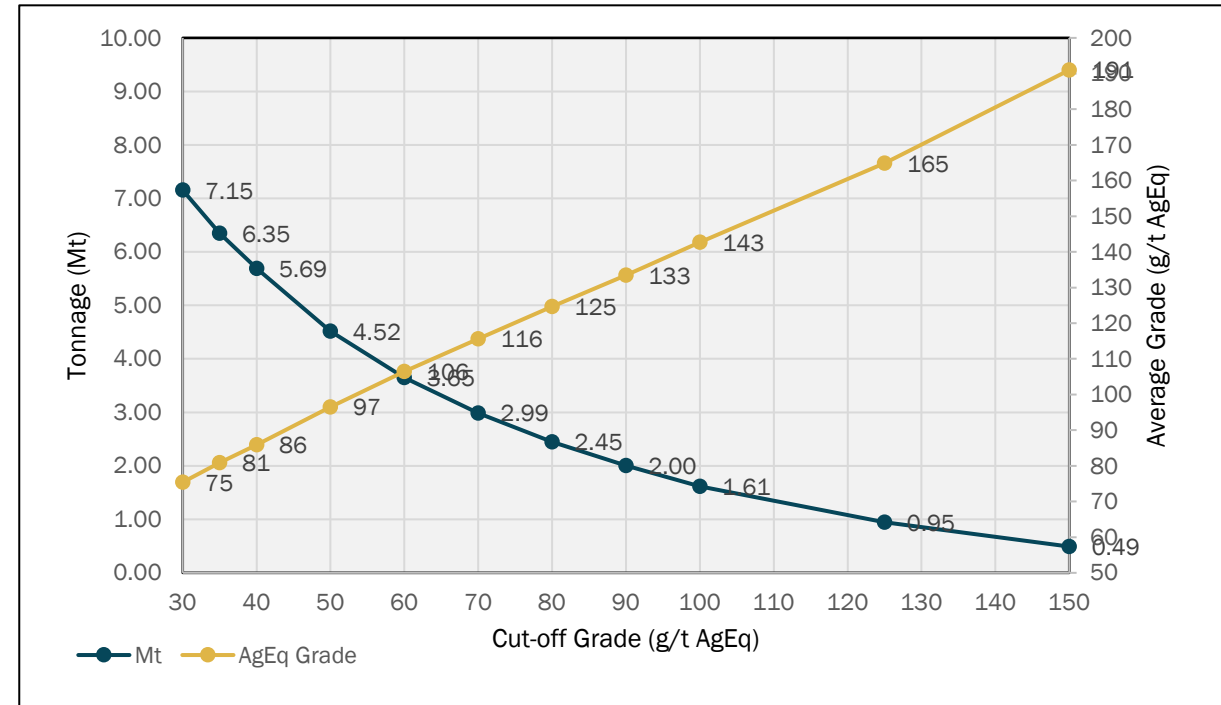
AGC confirms that it is not aware of any new information or data that materially affects the information included in the AGC MRE Announcement in relation to estimates of Mineral Resources and that all material assumptions and technical parameters underpinning the estimates continue to apply and have not materially changed. AGC confirms that the form and context in which the Competent Person’s findings are presented have not been materially modified from the announcement. Due to rounding to appropriate significant figures minor discrepancies may occur. Achilles’ reported silver equivalent (AgEq) is consistent with the AGC MRE Announcement and is based on the following assumptions: $AgEq = Ag (g/t) + 92.6 \times Au (g/t) + 21.8 \times Pb (\%) + 32.1 \times Zn (\%)$, where: silver price is US\$35/oz and recovery is 83%, gold price is US\$3300/oz and recovery is 90%, lead price is US\$1,950/t and recovery is 92% and zinc price is US\$2,800/t and recovery is 95%. In the Company’s opinion, the silver, gold, zinc, lead included in the metal equivalent calculations have a reasonable potential to be recovered and sold.

Mineral Resource Estimate

Grade Tonnage Graphs



Open pit grade tonnage graph where 40g/t AgEq cut off was used



Underground grade tonnage graph where 80g/t AgEq cut off was used

Disclaimer and Compliance Statement

This presentation has been prepared by Australian Gold and Copper Ltd ("AGC"). The information contained in this presentation is a professional opinion only and is given in good faith. Certain information in this document has been derived from third parties and though AGC has no reason to believe that it is not accurate, reliable or complete, it has not been independently audited or verified by AGC.

This presentation is for information purposes only. It has been prepared for the purpose of providing general information about Australian Gold and Copper Limited ("AGC"). It should not be considered as an offer, invitation, solicitation or recommendation to subscribe for or purchase any securities in AGC in any jurisdiction. It is not recommended that any person makes an investment decision in relation to AGC in reliance on this presentation material. This presentation does not constitute financial product advice and has been prepared without taking into account the recipient's investment objectives, financial circumstances or particular needs and the opinions and recommendations in this presentation are not intended to represent recommendations of particular investments to particular persons. Recipients should seek professional advice when deciding if an investment is appropriate. All securities transactions involve risks, which include (among others) the risk of adverse or unanticipated market, financial or political developments.

This presentation contains forecasts and forward-looking statements. Such statements are predictions only based on available data which may be unreliable and is subject to inherent risks and uncertainties. Investors are cautioned that forward-looking statements are not guarantees of future performance and accordingly investors are cautioned not to put undue reliance on forward-looking statements due to the inherent uncertainty therein, which could cause actual values, results, performances or achievements to differ materially from those expressed, implied or projected in this presentation.

This overview does not purport to be all-inclusive or to contain all information which its recipients may require in order to make an informed assessment of the project prospects. Each of AGC, its officers, employees and advisers expressly disclaims any responsibility for the accuracy or completeness of the material contained in this presentation and excludes all liability, direct, indirect or consequential for any loss or damage which may be suffered by any person as a consequence of any information in this presentation or any error or omission therefrom. AGC accepts no responsibility to update any person regarding any inaccuracy, omission or change in information in this presentation.

COMPETENT PERSONS STATEMENT

The information in this document that relates to Exploration Results, Mineral Resources or Ore Reserves is based on information compiled by Mr Glen Diemar who is a member of the Australian Institute of Geoscientists. Mr Diemar is a full-time employee of Australian Gold and Copper Limited, and has associated shareholdings in, Australian Gold and Copper Limited, however Mr Diemar believes these shareholdings do not create a conflict of interest, and Mr Diemar has sufficient experience which is relevant to the style of mineralisation and type of deposit under consideration and to the activity which he is undertaking to qualify as a Competent Person as defined in the 2012 Edition of the "Australasian Code for Reporting of Exploration Results, Mineral Resources and Ore Reserves". Mr Diemar consents to the inclusion in this presentation of the matters based on his information in the form and context in which it appears.

The references to any historical exploration results are disclosed in the prospectus, the references and in the Geological Survey of NSW, DIGS file database, and are not pursuant to the JORC 2012 Edition. Mr Diemar confirms that any historical exploration results set out in this document are an accurate representation of the available data and studies for the project owned by Australian Gold and Copper Limited.

The information in this report that relates to Mineral Resource Estimates is based on and fairly represents information and supporting documentation compiled by Mr Arnold van der Heyden who is a Director of H & S Consultants Pty Limited. Mr van der Heyden is a member and Chartered Professional (Geology) of the Australian Institute of Mining and Metallurgy and has sufficient experience that is relevant to the style of mineralisation and type of deposit under consideration, and to the activity being undertaken, to qualify as a Competent Person as defined in the 2012 edition of the "Australasian Code for Reporting of Exploration Results, Mineral Resources and Ore Reserves" (JORC code). Mr van der Heyden consents to the inclusion in this report of the matters based on the information in the form and context in which it appears.

The preceding statements of Mineral Resources conform to the Australasian Code for Reporting of Exploration Results, Mineral Resources and Ore Reserves (JORC Code) 2012 Edition. The information in this announcement that relates to the current Mineral Resources for Achilles has been extracted from the ASX release by AGC entitled "Amendment to Initial Mineral Resource Estimate for Achilles Containing 38.5Moz Silver-

Equivalent" dated 16 December 2025, available at www.austgoldcopper.com.au and www.asx.com.au ("AGC MRE Announcement").

AGC confirms that it is not aware of any new information or data that materially affects the information included in the AGC MRE Announcement in relation to estimates of Mineral Resources and that all material assumptions and technical parameters underpinning the estimates continue to apply and have not materially changed. AGC confirms that the form and context in which the Competent Person's findings are presented have not been materially modified from the announcement. Due to rounding to appropriate significant figures minor discrepancies may occur. Achilles' reported silver equivalent (AgEq) is consistent with the AGC MRE Announcement and is based on the following assumptions: AgEq = Ag (g/t) + 92.6 x Au (g/t) + 21.8 x Pb (%) + 32.1 x Zn (%), where: silver price is US\$35/oz and recovery is 83%, gold price is US\$3300/oz and recovery is 90%, lead price is US\$1,950/t and recovery is 92% and zinc price is US\$2,800/t and recovery is 95%. In the Company's opinion, the silver, gold, zinc, lead included in the metal equivalent calculations have a reasonable potential to be recovered and sold.

FORWARD LOOKING STATEMENTS

This release contains certain forward-looking statements and forecasts, including possible or assumed reserves and resources, production levels and rates, costs, prices, future performance or potential growth of Australian Gold and Copper Limited, industry growth or other trend projections. Often, but not always, forward looking statements can generally be identified by the use of forward looking words such as "may", "will", "except", "intend", "plan", "estimate", "anticipate", "continue", and "guidance", or other similar words and may include, without limitation, statements regarding plans, strategies and objectives of management, anticipated production and expected costs. Indications of, and guidance on future earnings, cash flows, costs, financial position and performance are also forward-looking statements.

Forward looking statements, opinions and estimates included in this announcement are based on assumptions and contingencies which are subject to change, without notice, as are statements about market and industry trends, which are based on interpretation of current market conditions. Forward looking statements are provided as a general guide only. Such statements are not a guarantee of future performance and involve unknown risks and uncertainties, as well as other factors which are beyond the control of Australian Gold and Copper Ltd. Actual results and developments may differ materially from those expressed or implied by these forward-looking statements depending on a variety of factors. Nothing in this report should be construed as either an offer to sell or a solicitation of an offer to buy or sell securities.

IMPORTANT NOTICE

This presentation does not constitute an offer to acquire or sell or a solicitation of an offer to sell or purchase any securities in any jurisdiction. In particular, this presentation does not constitute an offer, solicitation or sale to any U.S. person or in the United States or any state or jurisdiction in which such an offer, tender offer, solicitation or sale would be unlawful.

The Company confirms that it is not aware of any new information or data that materially affects the information in the relevant ASX releases and the form and context of the announcement has not materially changed. The Company confirms that the form and context in which the Competent Persons findings are presented have not been materially modified from the prospectus and the relevant ASX releases.

For further details, refer to the AGC IPO Prospectus and ASX Announcements (ASX:AGC) which are available on the Company website www.austgoldcopper.com.au

This presentation has been approved for release by Glen Diemar, Managing Director of Australian Gold and Copper Ltd.

References

The information contained within this Presentation is extracted from the following reports titled:

AGC ASX 23 April 2024, New discoveries at Achilles and Hilltop
AGC ASX 15 May 2024, Achilles delivers outstanding gold and silver results
AGC ASX 16 May 2024, Achilles additional gold result from hole A3RC031
AGC ASX 4 June 2024, Achilles final silver result from hole A3RC030
AGC ASX 17 June 2024, Achilles returns widest high-grade zone to date
AGC ASX 10 July 2024, Extensive exploration campaign underway at Achilles
AGC ASX 5 August 2024, Achilles interim exploration update
AGC ASX 17 October 2024, High grade silver gold base-metal mineralisation at Achilles
AGC ASX 13 November 2024, First core drilling confirms high-grade at Achilles
AGC ASX 18 December 2024, Achilles Returns up to 2.9 kilograms per tonne Silver
AGC ASX 23 December 2024, High res. drone geophysics survey highlights new exploration potential
AGC ASX 4 January 2025, Emerging Copper Search Space
AGC ASX 29 January 2025, Strong silver results extend Achilles strike length
AGC ASX 4 February 2025, Emerging Copper Search Space
AGC ASX 7 April 2025, New Drilling Highlights Near-Surface Gold Potential at Achilles
AGC ASX 28 April 2025, Initial Aircore Results Extend Achilles Footprint By At Least 1.2km
AGC ASX 5 June 2025, Aircore Drilling Highlights Significant Gold-Silver Trend
AGC ASX 10 June 2025, New Acquisition to Give Belt-Scale Control of South Cobar
AGC ASX 1 July 2025, Presentation - Mining News Select Conference
AGC ASX 5 August 2025, New Acquisition Further Expands AGC Footprint in South Cobar
AGC ASX 7 August 2025, Metallurgical Tests Highlight Robust Recoveries at Achilles
AGC ASX 11 August 2025, Strong Results in RC Drilling in Southern Part of Achilles Deposit
AGC ASX 3 September 2025, Oxide Gold Results Strengthen Achilles Fundamentals
AGC ASX 13 October 2025, High Grade Ag and Au Mineralisation Extended at Achilles
AGC ASX 17 November 2025, Drilling Unlocks Potential Along 6km of Achilles Shear Zone
AGC ASX 19 November 2025, Significant Au-Ag results highlight near surface potential
AGC ASX 1 December 2025, Achilles northern zone delivers exceptional grades
AGC ASX 11 December 2025, Initial Mineral Resource Estimate for Achilles 38.5 Moz AgEq
AGC ASX 16 December 2025, Initial Mineral Resource Estimate for Achilles 38.5 Moz AgEq - Amended
AGC ASX 19 January 2026, Exceptional silver gold grades -Resource upside potential
AGC ASX 27 January 2026, Deep hole at Achilles yields excellent silver gold results

which are available to view on www.austgoldcopper.com.au The Company confirms that it is not aware of any new information or data that materially affects the information included in the original document/announcement and the Company confirms that the form and context in which the Competent Person's findings are presented have not materially modified from the original market announcement.

For further details please contact:

Glen Diemar, Managing Director
+61 434 827 965
gdiemar@austgoldcopper.com.au
Australian Gold and Copper Ltd
14 Edward St Orange NSW 2800
ACN 633 936 526

Phone (02) 6362 0716 Email info@austgoldcopper.com.au www.austgoldcopper.com.au