

Discovery and Development

Gold, Silver, and Copper in NSW, Australia

Gold Coast Gold

Chris Byrne, CEO & Managing Director

25 March 2026



Disclaimer

This presentation may contain certain statements and projections provided by or on behalf of Legacy Minerals Holdings Limited (**ASX: LGM, Legacy Minerals, or the Company**) with respect to the anticipated future undertakings. These forward-looking statements reflect various assumptions by or on behalf of Legacy Minerals. Accordingly, these statements are subject to significant business, economic and competitive uncertainties and contingencies associated with the mining industry which may be beyond the control of Legacy Minerals which could cause actual results or trends to differ materially, including but not limited to price and currency fluctuations, geotechnical factors, drilling and production results, development progress, operating results, reserve estimates, legislative, fiscal and regulatory developments, economic and financial markets conditions in various countries, approvals and cost estimates, environmental risks, ability to meet funding requirements, share price volatility. Accordingly, there can be no assurance that such statements and projections will be realised. Legacy Minerals makes no representations as to the accuracy or completeness of any such statement of projections or that any forecasts will be achieved.

Additionally, Legacy Minerals makes no representation or warranty, express or implied, in relation to, and no responsibility or liability (whether for negligence, under statute or otherwise) is or will be accepted by Legacy Minerals or by any of their respective officers, directors, shareholders, partners, employees, or advisers as to or in relation to the accuracy or completeness of the information, statements, opinions or matters (express or implied) arising out of, contained in or derived from this presentation or any omission from this presentation or of any other written or oral information or opinions provided now or in the future to any interested party or its advisers. In furnishing this presentation, Legacy Minerals undertakes no obligation to provide any additional or updated information whether as a result of new information, future events or results or otherwise. Nothing in this material should be construed as either an offer to sell or a solicitation of an offer to buy or sell securities. It does not include all available information and should not be used in isolation as a basis to invest in Legacy Minerals.

This presentation contains exploration results and historic exploration results as originally reported the Company's Prospectus dated 28 July 2021 and released 9 September 2021 and subsequent ASX market announcements. The Company confirms that it is not aware of any new information that materially affects the information included in the original market announcements and that all material assumptions and technical parameters underpinning the estimates in the relevant market announcements continue to apply and have not materially changed. The Company confirms that the form and context in which the Competent Persons' findings are presented have not been materially modified from the original market announcements.

The information in this presentation that relates to Exploration Targets, Exploration Results is based on information compiled by Thomas Wall, a Competent Person who is a Member of the Australian Institute of Geoscientists. Mr Wall is the Technical Director is a full-time employee of Legacy Minerals Limited and a shareholder, who has sufficient experience that is relevant to the style of mineralisation and type of deposit under consideration and to the activity being undertaken to qualify as a Competent Person as defined in the 2012 edition of the Australasian Code for Reporting of Exploration Results, Mineral Resources and Ore Reserves. Mr Wall consents to the inclusion in the report of the matters based on his information in the form and context in which it appears.

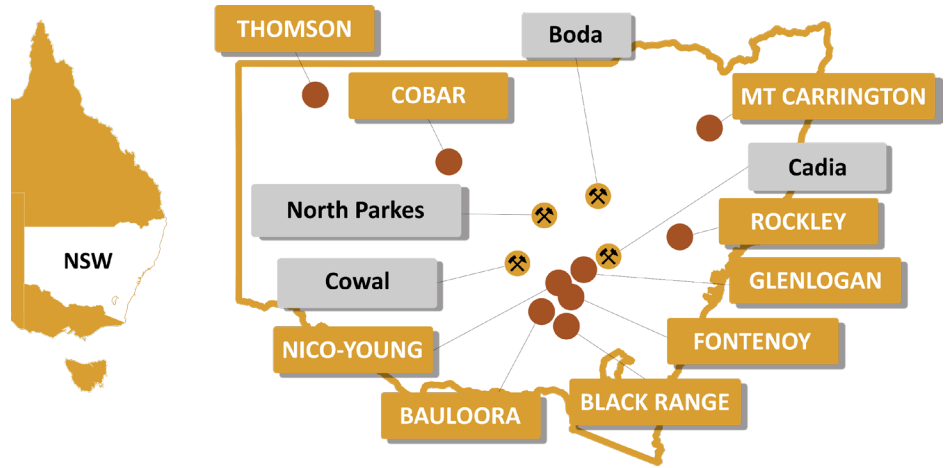
The information in this announcement that relates to the Mineral Resource Estimate and classification of the Drake Project is based on information compiled by Kate Kitchen, who is a Member of the Australasian Institute of Mining and Metallurgy and a Member of the Australian Institute of Geoscientists. Kate Kitchen is an independent consultant employed full time by Mining Plus Pty Ltd. Kate Kitchen has sufficient experience that is relevant to the style of mineralisation and type of deposit under consideration and to the activity which she is undertaking to qualify as a Competent Person as defined in the 2012 Edition of the Australasian Code for Reporting of Exploration Results, Mineral Resources and Ore Reserves ('the JORC code'). Kate Kitchen consents to the inclusion in the report of the matters based on the information in the form and context in which it appears.

The release of these presentation materials has been authorised by the Board.



Company Overview¹

Market Cap \$29M **Share Price** \$0.145 **Cash** \$10M (30 Jan) **Enterprise Value** \$19M



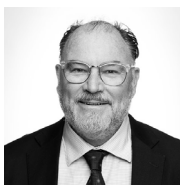
Shares 200M **Options** 37M (with 25.5M at \$0.30 exp Jan 27) **Debt** Nil

Deal flow providing non-dilutive exposure
8 deals since 2023 with companies including Newmont, EarthAi, Rio Tinto, S2 Resources

Board



Dr David Carland
Non-Executive Chairman



Matthew Wall
Non-Executive Director

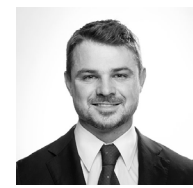


Douglas Menzies
Non-Executive Director

Management Team



Christopher Byrne
CEO and Managing Director



Thomas Wall
Exploration Manager and Executive Director



Dr John Greenfield
Chief Technical Advisor



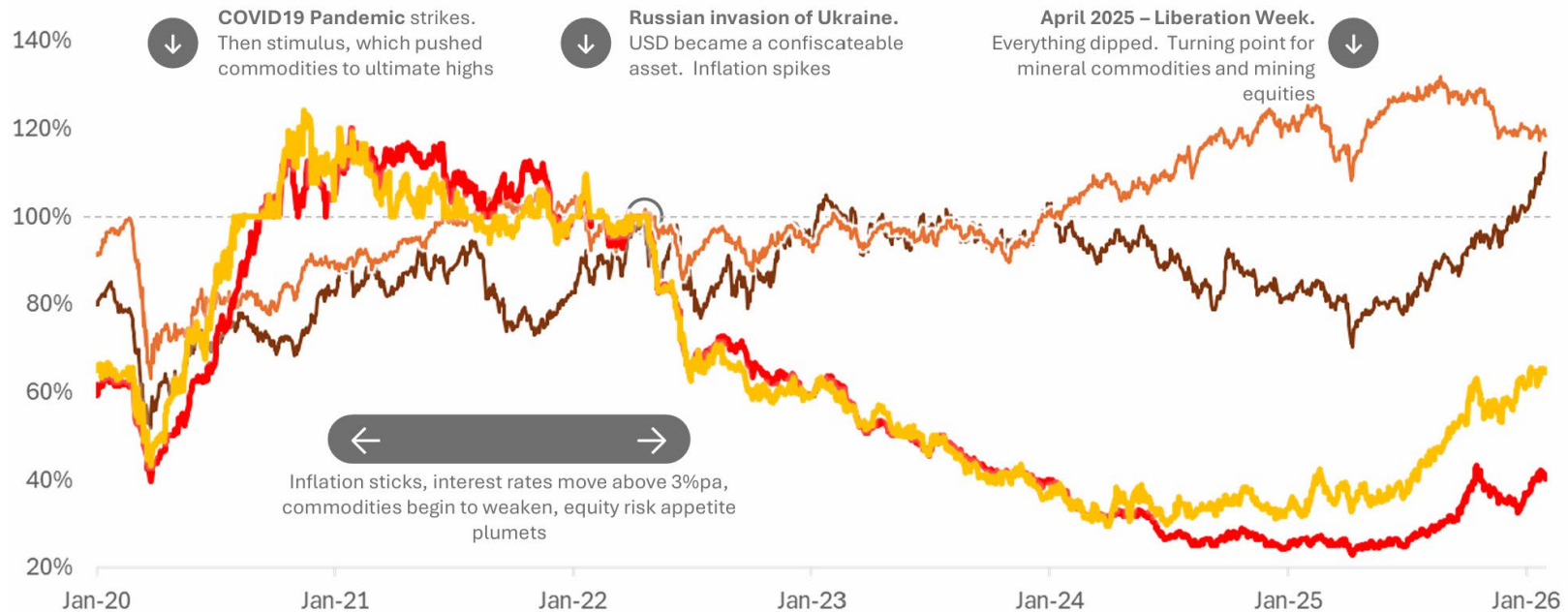
ASX: LGM

Why invest in Legacy Minerals and the junior space?

The case exposure in gold and silver explorers and pre-development companies

1. Gold and silver prices are not being factored into junior company valuations
2. Valuation case strengthens for companies that have proven resources and studies complete, and have moved beyond exploration risk and speculation
3. Companies with a strong cash balance have more resilience

Investing in a deeply discounted market (Lion Selection)¹



Dual track approach - Discovery and Development

Strategy to deliver shareholder value

1. Discovery

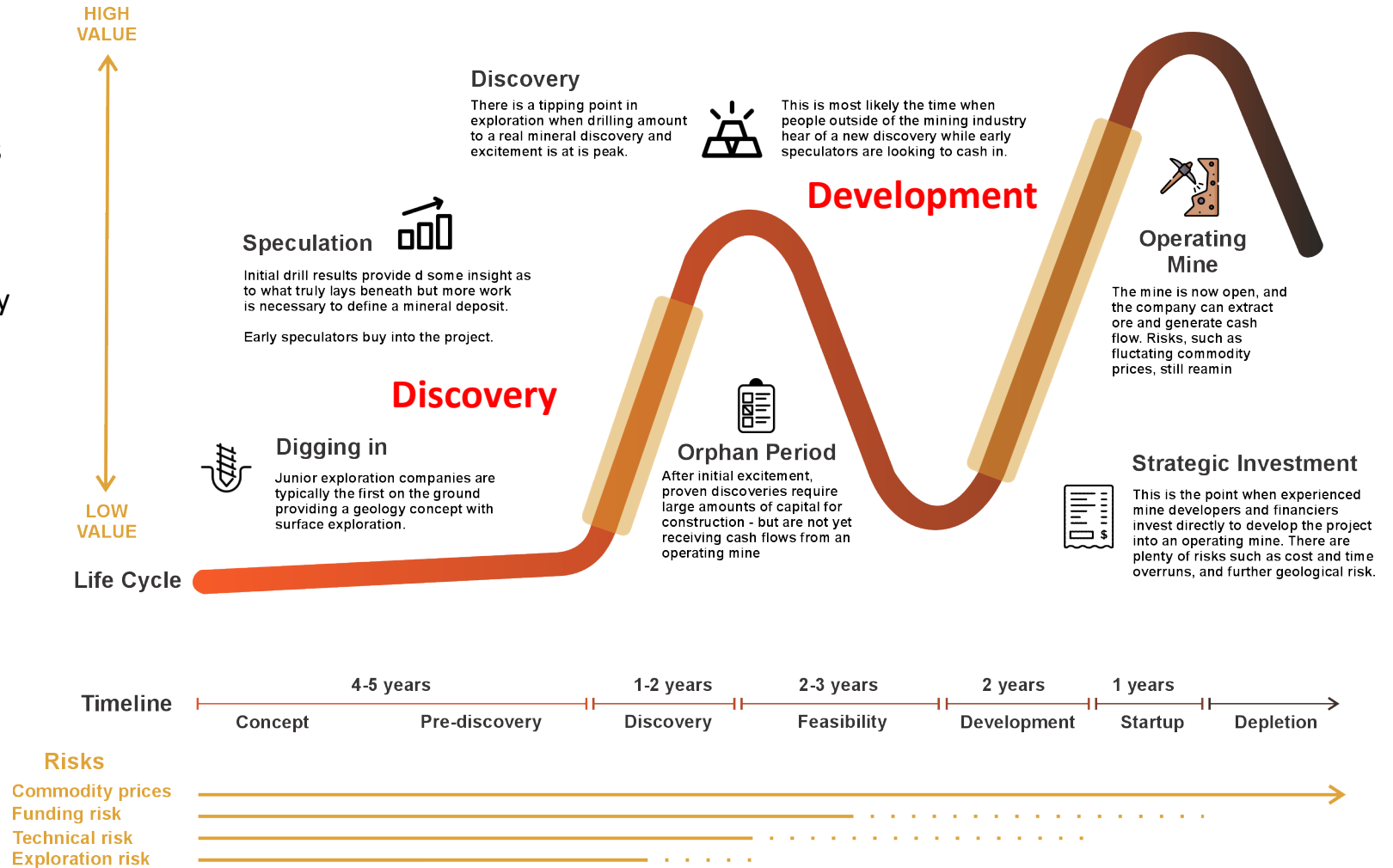
Focused discovery to expand Mt Carrington resource providing ongoing, share price catalysts

2. Development

Development of the Mt Carrington through study work, permitting.

3. Strategy Implementation

- Team with experience in the discovery and development
- Corporate connections demonstrate through transactions with the last three years (Newmont, Rio Tinto, S2R)
- Supportive shareholders
- Strong balance sheet
- **Backed by the geology that is known to host world class deposits**



Mt Carrington

Large, 115Moz AgEq Open Pit Silver-Gold Mineral Resource¹

79

Au

47

Ag

29

Cu



Discovery and Development

District-scale discovery opportunity with advanced development opportunity

Resource

115Moz AgEq¹ 2025 JORC Mineral Resource Estimate

Discovery opportunity

Epithermal system with multi-million-ounce potential – analogy with Kainantu-style gold-copper system (>18Moz AuEq)²

Infrastructure advantage

Estimated ~\$50m of existing infrastructure

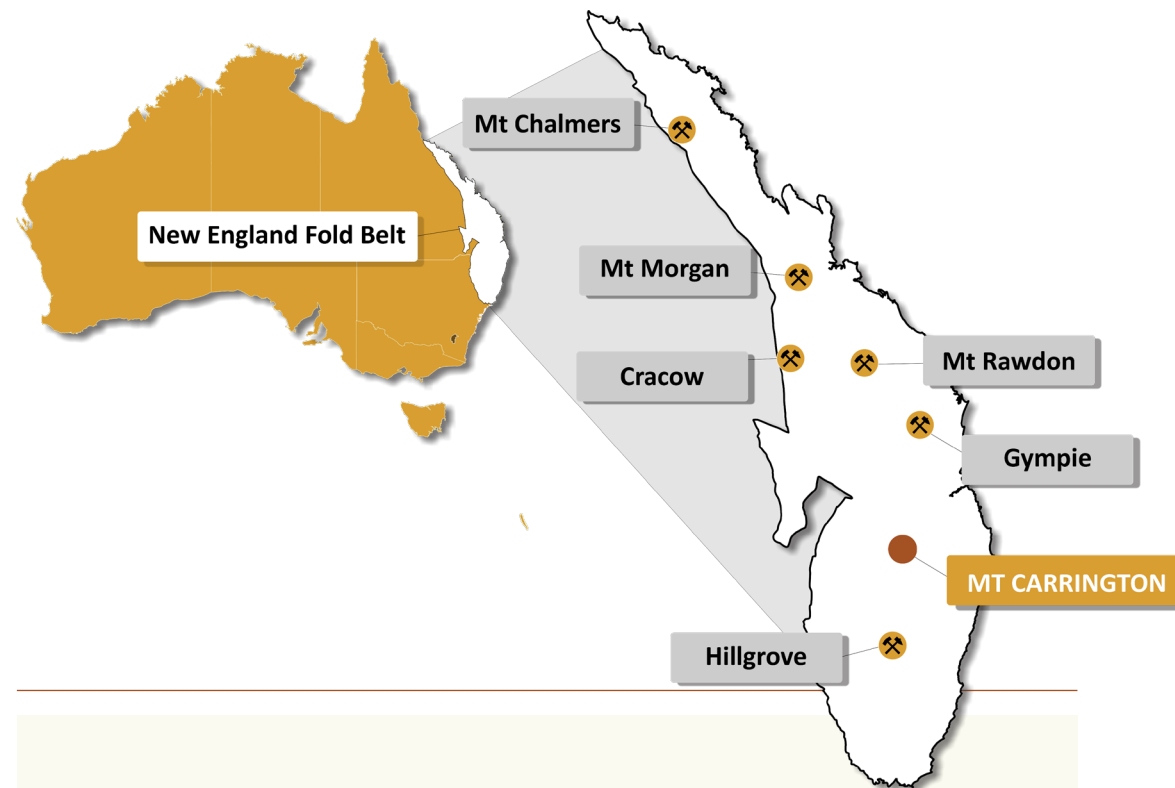
Significant high-grade intersects

12.82m at 48g/t Au and 2,589g/t Ag from 12m³

18.9m at 5.8% Cu from 58m and 10.1m at 7.26% Cu from 88m³

Near-term catalysts

2026 Scoping Study, ongoing drilling including high-grade targets



Multiple value-creation opportunities through resource growth, development and discovery.



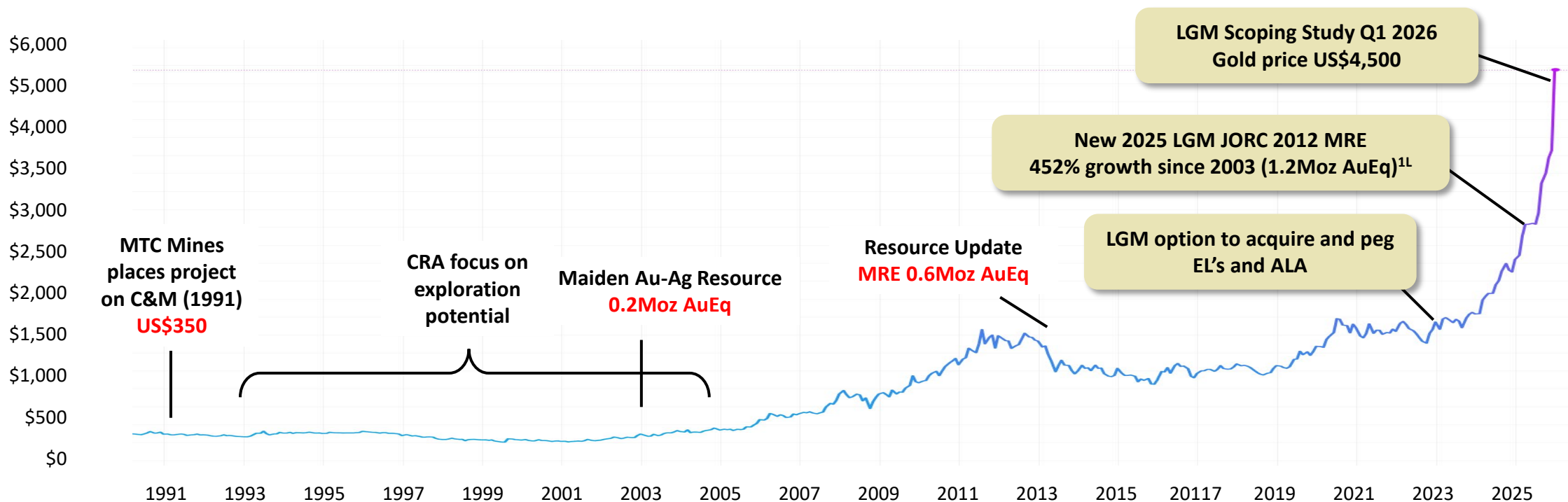
ASX: LGM

Project and Company History

Mt Carrington Project Ownership History



Gold Price (\$USD/oz) and Key Historical Project Events



ASX: LGM

Note: references on this slide are in the Appendix – Endnotes on Slides 21, Refer to Slide 22 for Mineral Resources

Mt Carrington

Discovery Opportunity

79

Au

47

Ag

29

Cu



Why Mt Carrington?

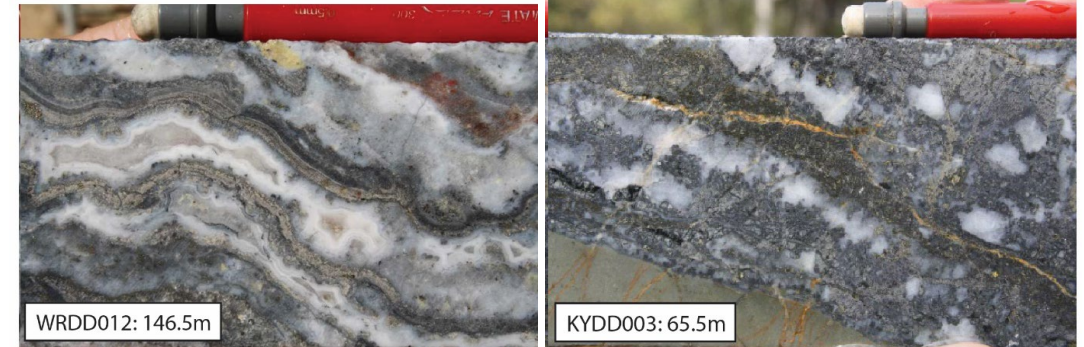
Extensive high-grades and wide mineralised zones

Gold and Silver Drill Hits

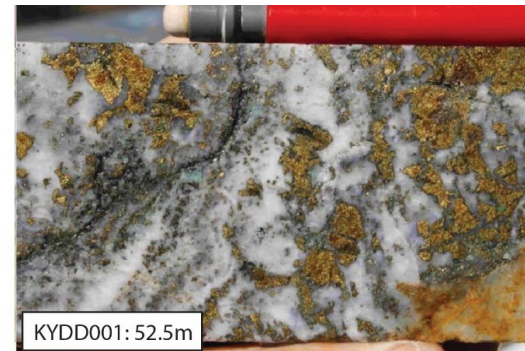
- **12.82m at 48g/t Au and 2,589g/t Ag** from 12m¹
 - including 1m up to **230g/t Au and 9,081g/t Ag**
- **118m at 1.71g/t Au, 6.9g/t Ag, 0.1%Cu and 1.12% Zn** from 2m¹
- **143m at 1.1g/t Au, 3g/t Ag, and 0.9% Pb+Zn** from 0m²
- **8m at 16.92g/t Au, 17g/t Ag, 0.53% Cu, 1.45% Pb and 6.89% Zn** from 52m³

Copper Drill Hits

- **18.9m at 5.8% Cu** from 58m and **10.1m at 7.26% Cu** from 88m¹



Examples of epithermal vein textures from drill holes WRDD012 (81m at 82g/t Ag from 40m) and KYDD003 (118m at 1.71g/t Au from 2m)¹



Overprinting Porphyry D-vein

Interpreted porphyry D-veins in KYDD001 at 52.5m (18.9m at 5.8% Cu from 58m)¹

(Comments on Exploration at the Drake Project, Corbett Geological Consulting)

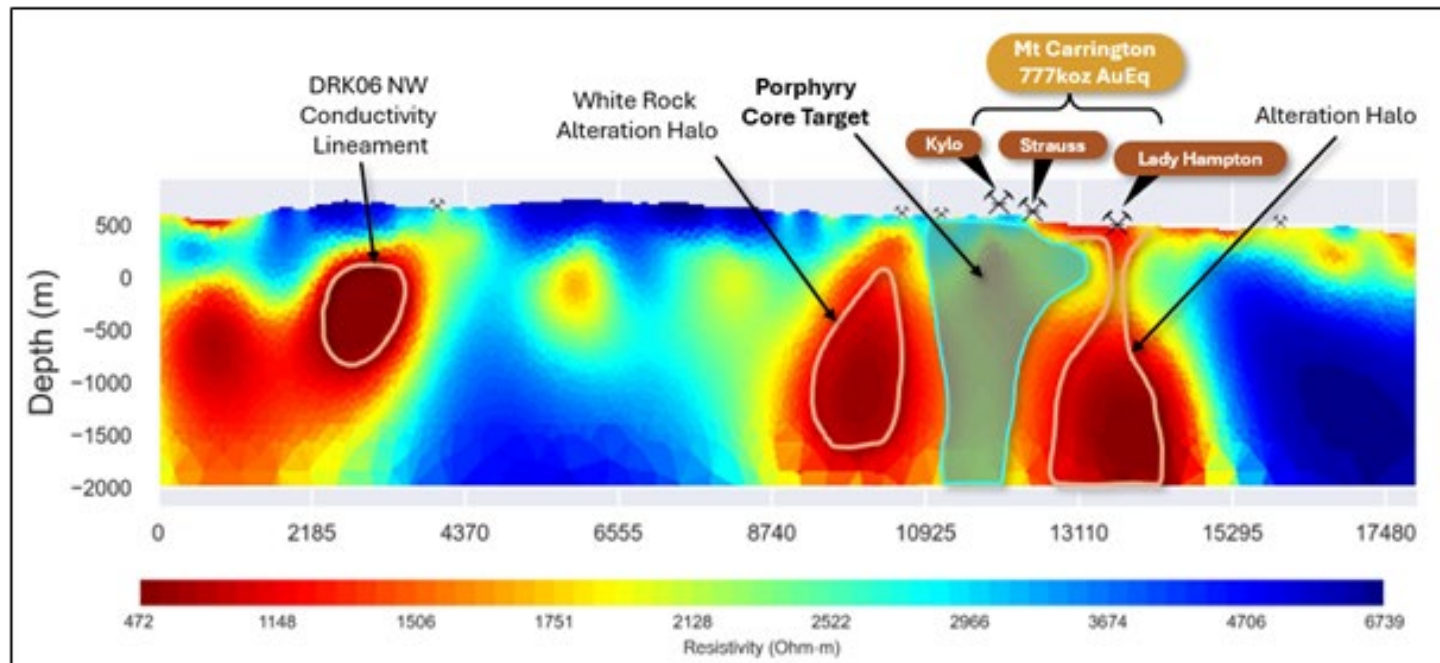


Drilling has barely scratched the surface

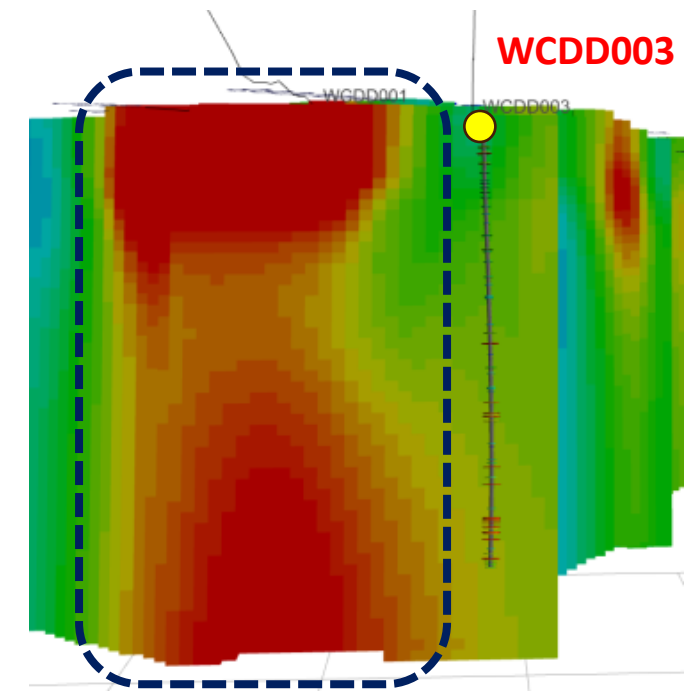
Target Rich Gold, Copper, and Silver Environment

- Detailed Airborne Mobile-MT data review has identified significant conductivity trends¹
 - Experts engaged who are familiar with the MT survey data used by K92 Mining Inc. at the Kainantu Mine
- Compelling discovery target opportunities confirmed both near-mine and regionally

Across the Mt Carrington Project there are 3,319 drill holes with an average depth 49m



Attempted drill test - 2015



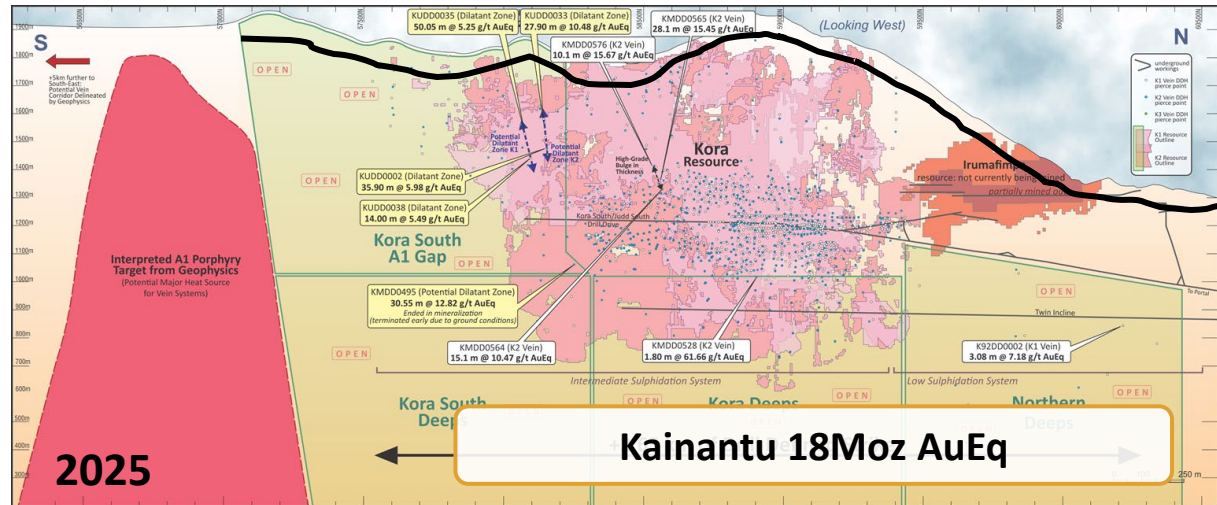
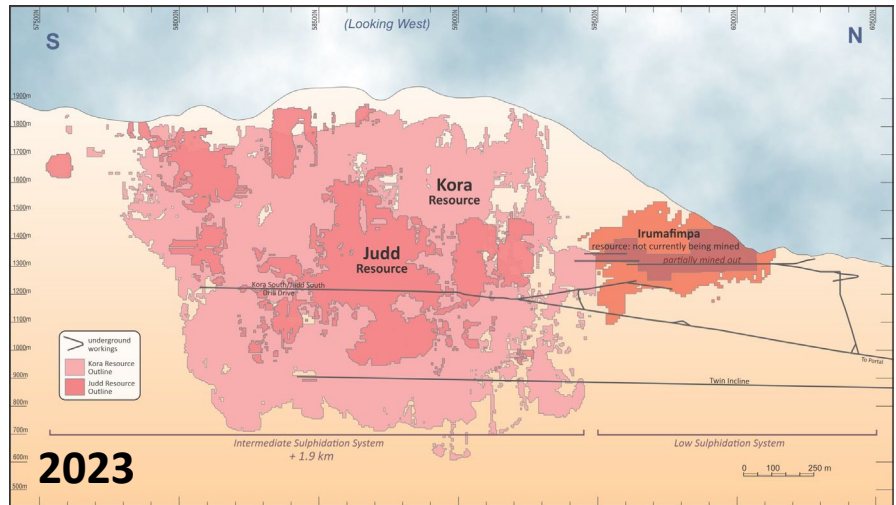
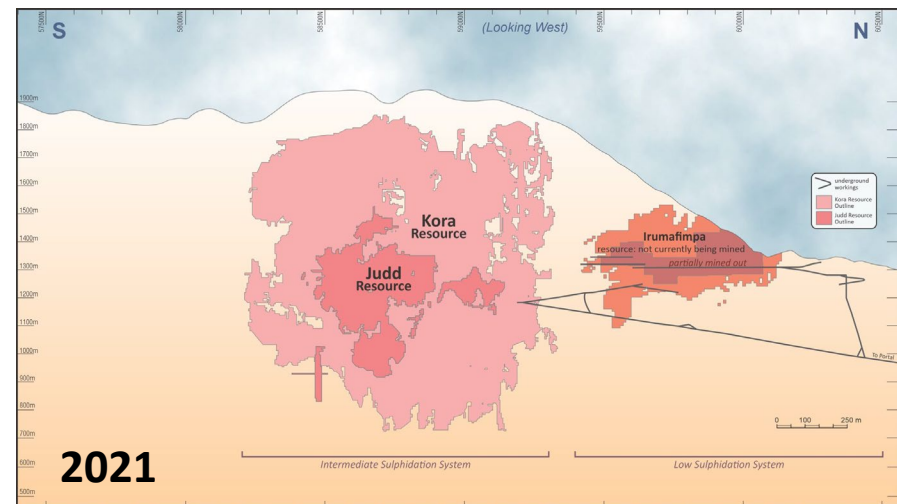
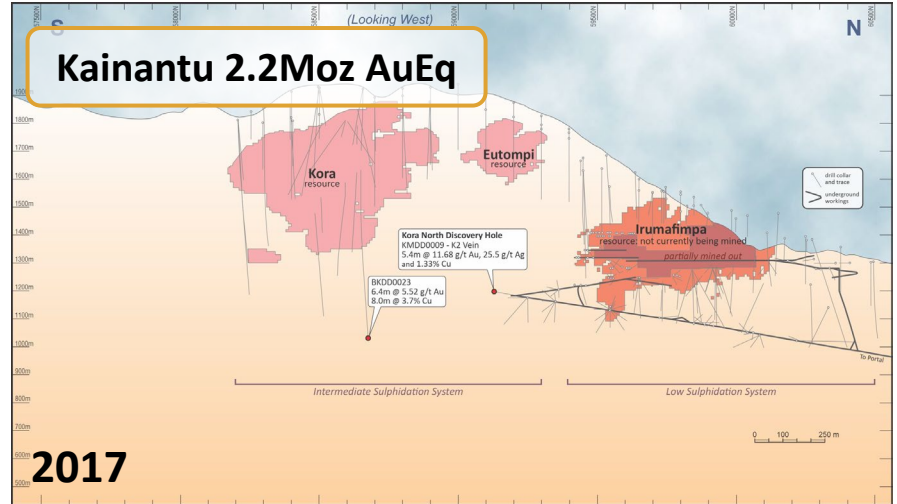
Undrilled porphyry target



Size of the Prize Potential: Kainantu – Exceptional AuEq Growth¹

Epithermal-porphyry systems potential to extend at depth

2015 Kainantu acquisition from Barrick 0.8Moz AuEq



Mt Carrington average drill depth is 50m

Emerging Gold Discovery (current drilling)

First ever diamond drilling intersecting significant gold

New Discovery – Mascotte

The first hole, from an eight-hole campaign has returned an outstanding, first pass intercept of¹:

40m at 1.0g/t Au from 151m, including:

- 9m at 2.7g/t Au from 180m, and
- 1m at 5.6g/t Au from 157m

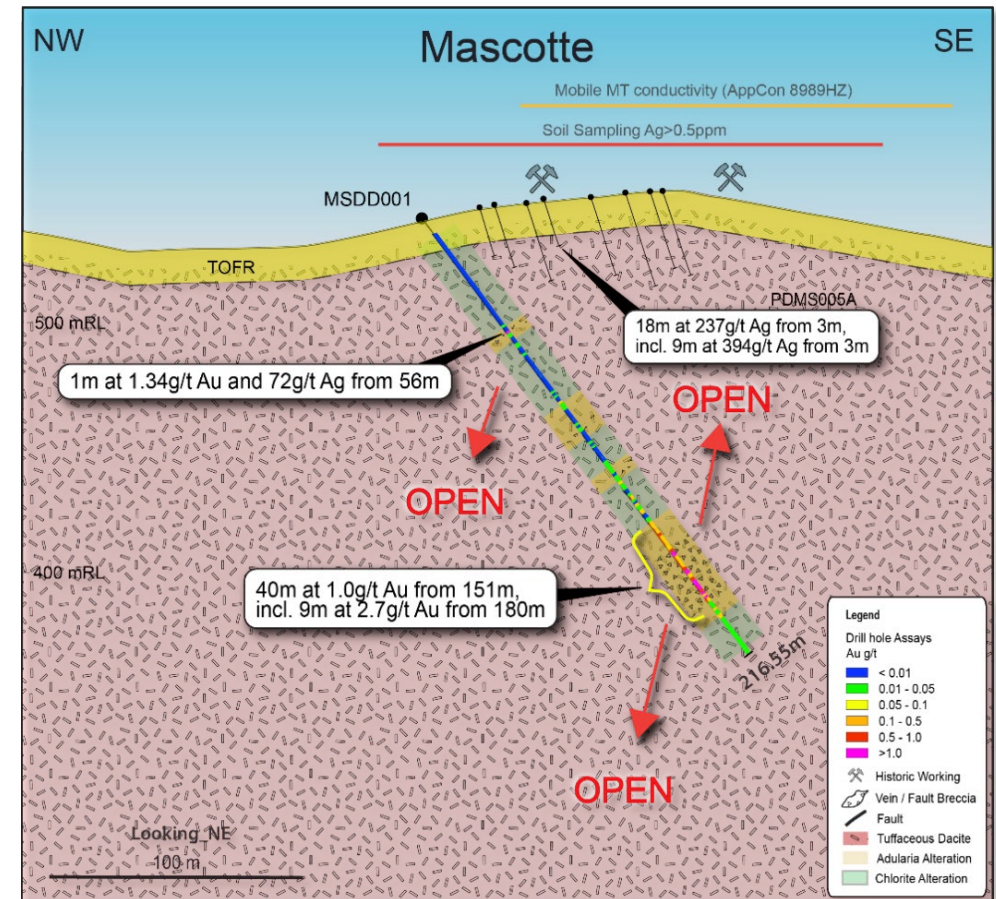
Historical High – Grade Silver not tested

Preliminary drilling did not replicate historical silver drill hits (1970) which include¹:

- **18.3m at 237g/t Ag from 3m²**, including:
 - **9.1m at 394g/t Ag**

This potentially indicates the presence of a parallel structure or silver rich zone closer to surface

Open along strike, at depth, and up to surface

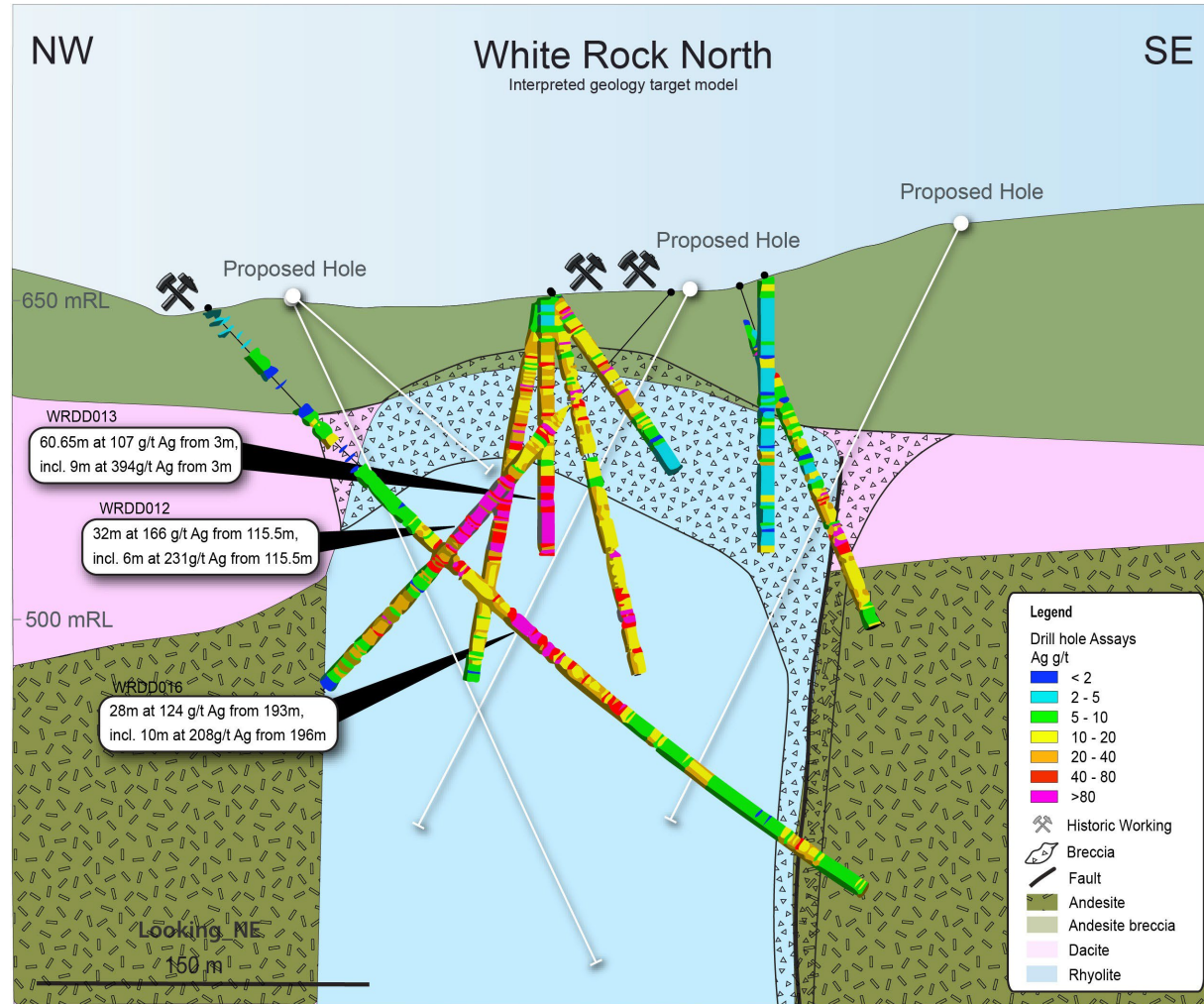


Cross-section of the Mascotte Mine^{1,2}

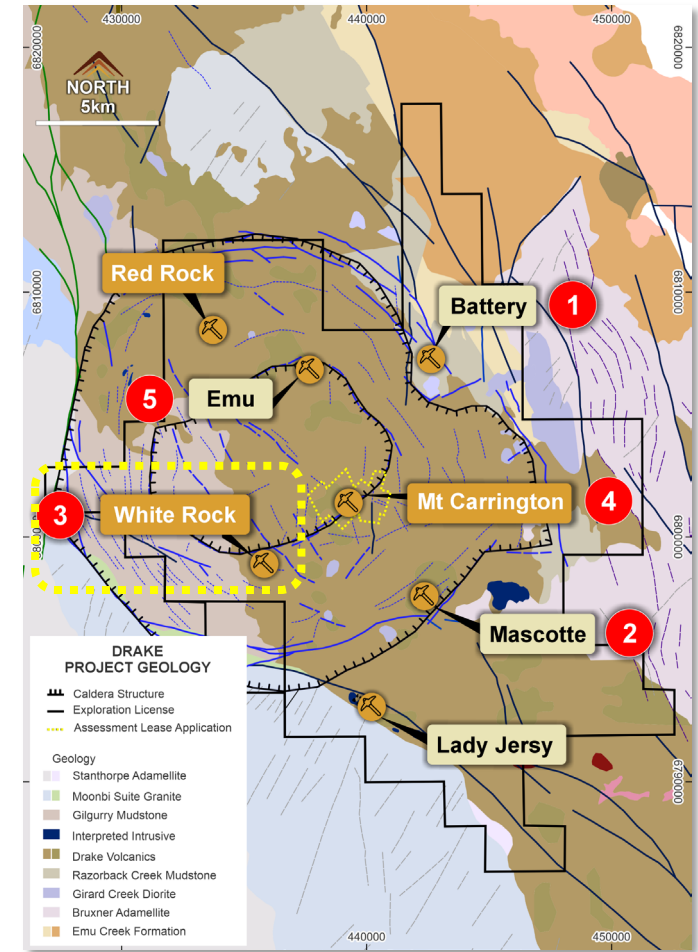


Planned Drill Targets – White Rock

Two existing silver dominant deposits open at depth



Cross Section of the Mt White Rock North Deposit with Planned Holes (White)¹



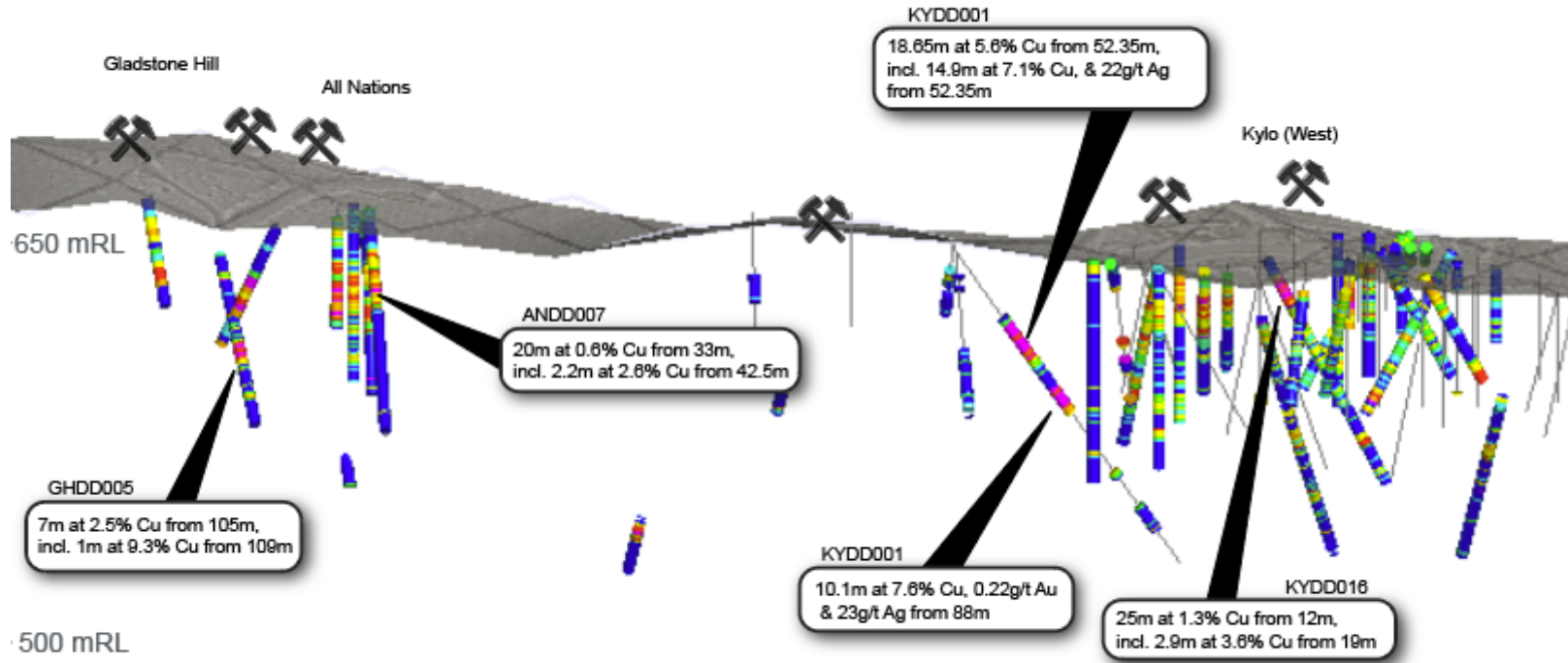
Planned drill programs across Mt Carrington



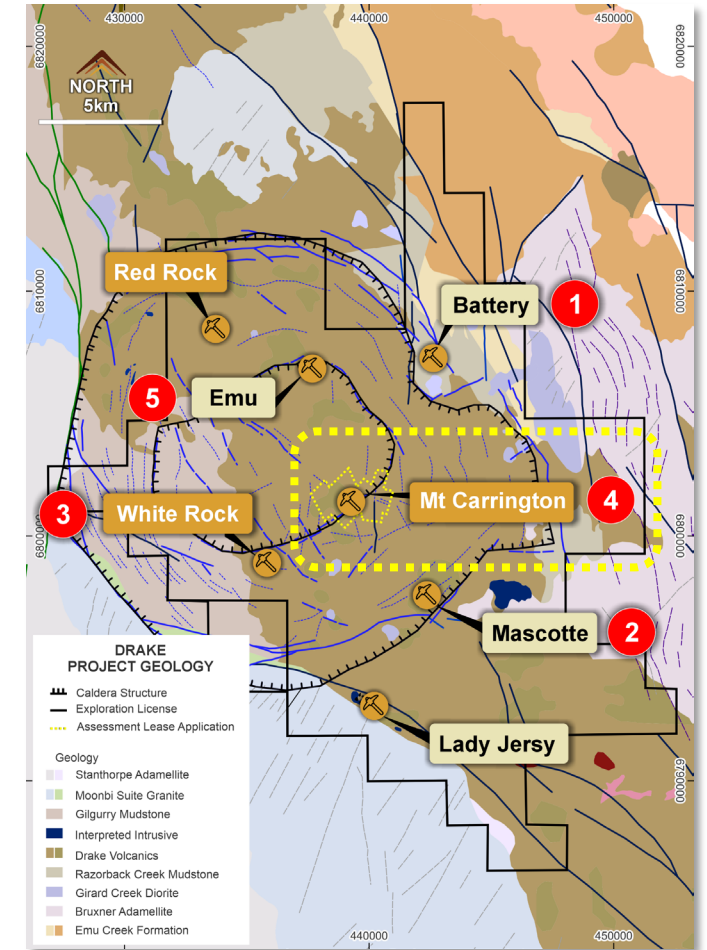
ASX: LGM

Planned Drill Targets – Mt Carrington

Copper and gold targets open at depth and along strike



Cross Section of the Mt Carrington Mine¹



Planned drill programs across Mt Carrington



Mt Carrington

Development Opportunity

79
Au

47
Ag

29
Cu



115Moz Silver-Equivalent Resource¹

One of Australia's highest grade, open-pit silver and gold project

2025 Mineral Resource¹

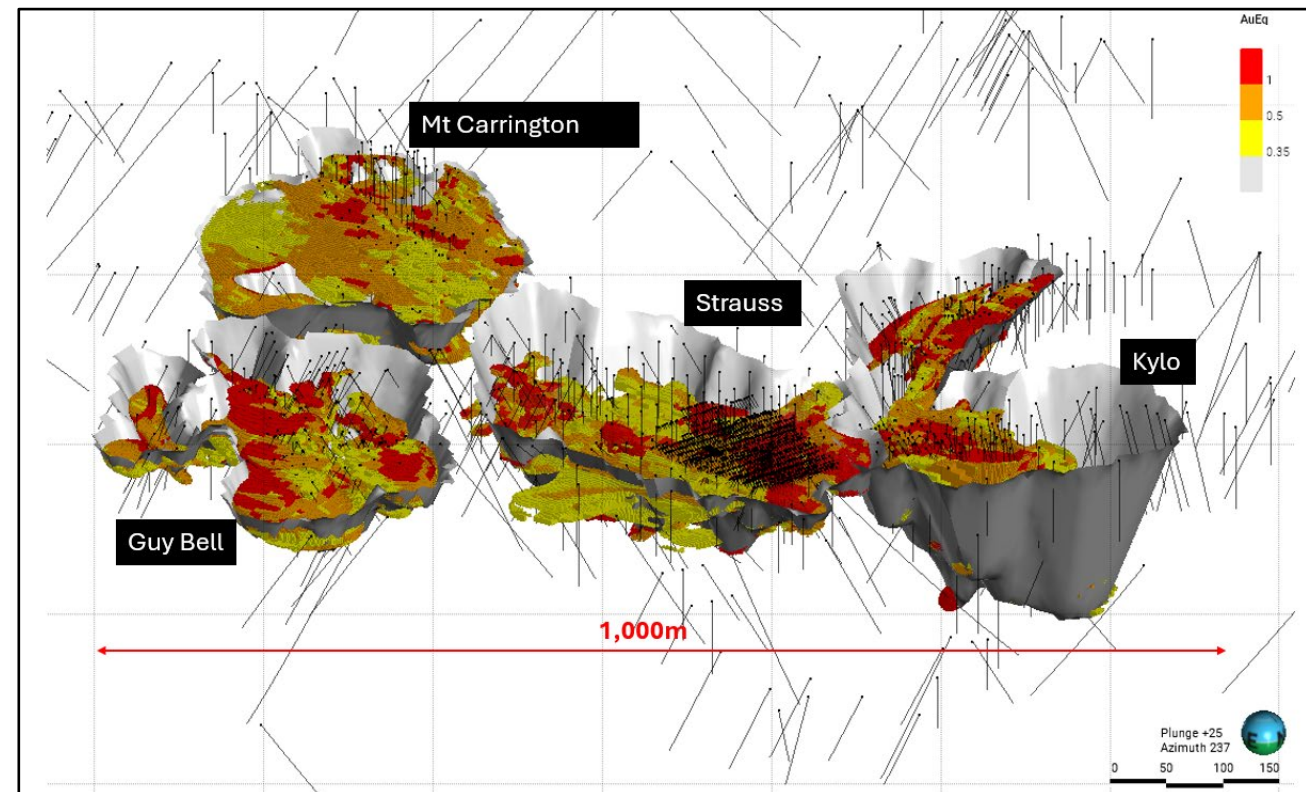
- 34.4Mt at 105g/t silver-equivalent (AuEq) containing 0.7Moz Au, 24.3Moz Ag, 147kt Zn, 33kt Pb, 20kt Cu

Substantial platform for growth

- New MRE provides company exceptional base to start adding ounces
- Initial gold-dominant open pit resources highlight potential for lower initial OPEX production
- Potential for low CAPEX due to site infrastructure
- **High-grade underground resource potential** yet to be targeted with drilling and incorporated into resource

Consistent Mineral Resource Growth With Discovery

- Project has consistently grown with every new Mineral Resource Estimate



2026 Scoping Study

New precious metal concentrate planned at brownfields site

- 2026 study will evaluate new 2025, 34Mt Mineral Resource (2025 Study only evaluated ~200koz of gold¹)
- **Previous Metal Concentrate** - Met. Review by Ausenco identifying a precious metal concentrate as the optimal processing pathway²
- **Existing Site Infrastructure** - Opens pits pre-stripped, haul roads completed, tailings dam built, 750ML freshwater dam installed, grid easement constructed, minor site infrastructure

Power	Tailings Dam	Water Source	Active Mining History	Land Use
Existing grid Connection	Yes, built	Yes, built	1853 till 1990s	State Forestry

Robust results from limited 2025 Study – only based on ~200koz Gold²

Financials	A\$5,000
NPV ₈	\$388M
IRR	141%
Free Cash Flow	\$405M
Mining Metrics	ASIC A\$1,726, open-pit, 34koz Au pa, A\$47M CAPEX



Legacy Minerals Investment Case

Discovery and Development

1. 115Moz AgEq¹ resource lays a strong foundation for further resource growth

- At 105g/t AgEq¹, it one of Australia's highest grade open pit silver-gold deposits

2. Market capitalisation presents significant growth opportunities

- Catalysts include 2026 Scoping Study, drilling, and potential resource growth

3. Focused on gold, silver and copper

- Strong long-term macro market thematic

4. Clear strategy to deliver shareholder value

- Discovery and development at Mt Carrington, joint ventures & partnerships on generative projects proving discovery upside

4. \$10 million in cash (30 Jan)

- Cash in bank to deliver strategy





Thank You

Chris Byrne *CEO & Managing Director*
chris.byrne@legacyminerals.com.au +61 499 527 547

Appendix A – Endnotes

Intro Slide 4: 1 LSX ASX Release, 9 February 2026, *Lion Investor Update February 2026*

MTC Slide 6: 1 LGM ASX Release, 12 December 2025, *New Silver Targets and Drill Approvals at Mt Carrington*

MTC Slide 7: 1 LGM ASX Release, 1 September 2025, *Metallurgical Study Commences at Mt Carrington Project* 2 Independent Technical Report, Kainantu Gold Mine, Updated Integrated Development Plan, Kainantu Project, Papua New Guinea, Definitive Feasibility Study and Preliminary Economic Analysis, National Instrument 43-101 Technical Report, January 1, ASX Release LGM 29 October 2024 *3,050gt Silver and 79gt Gold in Historical Drake Drilling*

MTC Slide 8: 1 LGM ASX Release, 12 December 2025, *New Silver Targets and Drill Approvals at Mt Carrington*

MTC Slide 10: 1 ASX Release LGM 29 October 2024 *3,050gt Silver and 79gt Gold in Historical Drake Drilling*, ASX Release LGM 2 May 2025 *Amendments - Release 1 May 2025*, Mount Carrington Mines Limited, 17 April 1970, DIGS R00018103, Sixth Annual Report for Period Ending September 15 1992, EL2662 (Drake) CRA Exploration, Prospectus is issued by White Rock Minerals Ltd (“White Rock”) dated 20 August 2010, ASX TMZ Release: 24 October 2022, High Grade Copper Target at Mt Carrington; 2 ASX Release LGM, 2 May 2025, *Amendments - Release 1 May 2025*; ASX Release LGM, 1 May 2025, *Broad and High-Grade Gold 1in Drilling Intercepts*; 3 ASX Release LGM, 28 March 2024, *Clarification of Mt Carrington Acquisition Announcement*

MTC Slide 11: ASX Release LGM, 25 August 2025, *Drilling Approval and New Targets at Mt Carrington Project*

MTC Slide 12: 1 Otterburn Announces K92 Completes Purchase of Kainantu Mine From Barrick Gold Corp. and Files Initial Independent Technical Report and Resource Estimate, March 11, 2015 (Otterburn Resources Corp); Growing Production & Transformative Discoveries, Site Visit Presentation, October 23-24, 2024; K92 Mining Inc.; Independent Technical Report Mineral Resource Estimate Blue Lake Porphyry Deposit, Kainantu, Papua New Guinea, K92 Mining Inc., 01 August 2022; 3. Independent Technical Report, Kainantu Gold Mine, Updated Integrated Development Plan, Kainantu Project, Papua New Guinea, Definitive Feasibility Study and Preliminary Economic Analysis, National Instrument 43-101 Technical Report, January 1, 2024.

MTC Slide 13: 1 ASX Release LGM, ASX Release LGM, 19 March 2026, *Maiden Drilling Makes New Greenfields Gold Discovery*, 2 ASX Release LGM, 30 September 2025, *New Silver Drill Targets Approved and Drilling Commencing*

MTC Slide 14: ASX Release LGM, 30 September 2025, *New Silver Drill Targets Approved and Drilling Commencing*; 2 ASX Release LGM, 11 December 2025, *New Silver Targets and Drill Approvals at Mt Carrington*

MTC Slide 15: 1 ASX Release LGM 29 October 2024 *3,050gt Silver and 79gt Gold in Historical Drake Drilling*, ASX Release LGM 2 May 2025 *Amendments - Release 1 May 2025*

MTC Slide 17: 1 LGM ASX Release, 1 September 2025, *Metallurgical Study Commences at Mt Carrington Project*

MTC Slide 18: 1 LGM ASX Release, 12 December 2025, *New Silver Targets and Drill Approvals at Mt Carrington*, 2 LGM ASX Release, 15 April 2025, *Amendment - Release 11 April 2025*

Appendix B: 1 LGM ASX Release, 12 December 2025, *New Silver Targets and Drill Approvals at Mt Carrington*



Appendix B – Mt Carrington Mineral Resources¹

Prospect	Classification	Resource Tonnes and Grade							Contained Metal					
		Tonnes (Kt)	Au (g/t)	Ag (g/t)	Cu%	Pb%	Zn%	AgEq (g/t)	Au (Koz)	Ag (Koz)	Cu (kt)	Pb (kt)	Zn (kt)	AgEq (Koz)
Strauss	Indicated	2,818	1.1	3.1	0.09	0.07	0.6	149	98	281	3	2	16	13,500
	Inferred	2,026	1	2	0.08	0.04	0.4	130	63	129	2	1	9	8,468
Kylo	Indicated	2,842	1.1	2.1	0.07	0.05	0.4	138	103	191	2	1	11	12,609
	Inferred	2,081	0.6	3.8	0.11	0.06	0.6	101	40	251	2	1	13	6,757
Guy Bell	Inferred	2,512	0.7	2.3	0.16	0.08	0.6	117	58	188	4	2	15	9,449
Carrington	Inferred	2,236	0.5	5.6	0.14	0.08	0.2	83	33	403	3	2	4	5,967
Red Rock	Inferred	8,605	0.5	7.4	0.04	0.12	0.49	84	144	2046	3	10	43	23,239
Lady Hampden	Indicated	2,136	0.71	62	0.01	0.03	0.07	124	49	4251	0	1	2	8,516
	Inferred	2,125	0.74	35	0.01	0.04	0.08	100	51	2388	0	1	2	6,832
Silver King	Indicated	469	0.12	80	0.01	0.03	0.07	93	2	1200	0	0	0	1,402
	Inferred	106	0.05	53	0.01	0.02	0.05	60	0	180	0	0	0	204
Lead Block	Inferred	215	0.21	44	0.01	0.03	0.08	66	2	307	0	0	0	456
White Rock	Indicated	3,135	0.05	66	0.02	0.22	0.73	104	5	6629	1	7	23	10,482
	Inferred	1,051	0.08	37	0.02	0.16	0.62	72	3	1258	0	2	7	2,433
White Rock North	Inferred	2,039	0.05	70	0.01	0.14	0.11	83	4	4592	0	3	2	5,441
Total		34,396						104.7	653	24,294	20	33	146	115,756

The preceding statements of Mineral Resources conform to the Australasian Code for Reporting of Exploration Results, Mineral Resources and Ore Reserves (JORC Code) 2012 Edition. All tonnages reported are dry metric tonnes. Minor differences may occur due to rounding to appropriate significant figures. For White Rock & White Rock North. AgEq calculated using the formula: $AgEq = Ag + 84.0712xAu + 93.2167xCu + 36.0156xZn + 27.0117xPb$ and Recoveries applied are 72% (Au), 71.7% (Ag), 66% (Cu), 85% (Zn) and 85% (Pb). For Kylo, Strauss, & Red Rock AgEq calculated using the formula: $AgEq = Ag + 101.417xAu + 125.477xCu + 35.4288xZn + 28.23323xPb$ and Recoveries applied are 83.1% (Au), 68.6% (Ag), 85% (Cu), 80% (Zn) and 85% (Pb). For Lady Hampden, Silver King, and Lead Block, AgEq calculated using the formula: $AgEq = Ag + 82.4186xAu + 63.0108xCu + 27.0046xZn + 21.5193xPb$ and Recoveries applied are 88.6% (Au), 90% (Ag), 56% (Cu), 80% (Zn) and 85% (Pb). AgEq formula calculated using silver price of \$43/oz, gold price of \$3600/oz, copper price of \$14000/t, zinc price of \$4200/t and the lead price of \$3150/t (all AUD). In the opinion of the Company, all elements included in the metal equivalent calculation have a reasonable potential to be sold and recovered based on current market conditions and metallurgical test work up to 2017.

