

Unlocking the Next Australian Large-Scale Gold-Copper Opportunity

Right commodity, in the Right jurisdiction at the Right time

Investor Presentation
March 2026

ASX:RRE

Acknowledgement of Country

RRE acknowledges the Australian Aboriginal and Torres Strait Islander peoples as the first inhabitants of the nation and the traditional custodians of the lands where we live, learn and work. We pay our respects to past, present and emerging Elders.

IMPORTANT INFORMATION



This presentation (**Presentation**) is provided for information purposes only and has been prepared by Right Resources Limited (ABN 81 649 632 744) (**Right Resources** or **Company**). This Presentation has been authorised for release by the Managing Director of the Company.

This Presentation is not a prospectus, product disclosure statement or other disclosure document under the Corporations Act (or otherwise) and does not contain all the information required to be disclosed in a prospectus, product disclosure statement or other disclosure document. This Presentation, the information contained in it and any oral statements made in connection with this Presentation shall not constitute an offer to sell, or a solicitation of an offer to buy, or a recommendation to purchase, any securities, or a commitment of the Company with respect to any of the foregoing, and this Presentation shall not form the basis of any contract. There shall not be any offer or sale of any securities of the Company in any jurisdiction where, or to any person to whom, such offer or sale may be unlawful under the laws of such jurisdiction. This Presentation may not be released to US wire services or distributed in the United States. The distribution of this Presentation in the United States and elsewhere outside Australia may be restricted by law. Persons who come into possession of this Presentation should observe any such restrictions as any non-compliance could contravene applicable securities laws.

Forward looking statements

This Presentation may include “forward-looking statements”. Which are statements that may be identified by words such as “anticipate,” “believe,” “continue,” “could,” “estimate,” “expect,” “intends,” “may,” “might,” “plan,” “possible,” “potential,” “predict,” “project,” “should,” “would,” and similar expressions (or the negative versions of such words or expressions) that involve risks or uncertainties.

In particular, any indications of, and guidance on, future earnings, financial positions and performance, exploration results and future studies, are forward-looking statements. These statements are based on an assessment of present economic and operating conditions and on a number of best estimate assumptions regarding future events and actions that, as of the date made, are expected to take place. Such forward-looking statements are not guarantees of future performance and involve known and unknown risks, uncertainties, assumptions and other important factors, many of which are beyond the control of the Company, and which are based on assumptions and contingencies subject to change without notice, and which could cause actual results or trends, projections, guidance and estimates to differ materially from those expressed in this Presentation.

Relevant factors include risks associated with exploring for gold, project development and construction and the mining, processing and sale of gold, including without limitation obtaining environmental and regulatory approvals and the time and conditions attached to the same, changes in commodity prices, foreign exchange fluctuations and general economic conditions, increased costs and demand for exploration and production inputs, the outcomes of studies, the speculative nature of exploration and project development, including the risks of obtaining necessary licenses and permits and diminishing quantities or grades of reserves, political and social risks, changes to the regulatory framework within which the Company operates or may in the future operate, environmental conditions and geological and geotechnical events. Any forward-looking statements should be read in conjunction with, and are qualified by reference to, the information in the Company’s Prospectus dated 19 September 2025 (in particular, the key risk factors).

The Company cannot and does not give any assurance that the results, performance or achievements expressed or implied by the forward-looking statements contained in this Presentation will actually occur and recipients are cautioned not to place undue reliance on these forward-looking statements. No person who has made any forward-looking statements in this Presentation (including the Company) has any intention to update or revise forward-looking statements, or to publish prospective financial information in the future, regardless of whether new information, future events or any other factors affect the information contained in this Presentation, other than to the extent required by law.

Exploration Results

The information in this Presentation that relates to the Company’s Exploration Results has been extracted from the Company’s previous ASX announcements released on 27 October 2025, 21 and 27 November 2025, 5 and 20 February 2026. Copies of those announcements are available at www.asx.com.au or www.rightresources.com.au/investors/asx-announcements. The Company confirms that it is not aware of any new information or data that materially affects the information included in those announcements.

Disclaimer

This Presentation is for informational purposes only and does not purport to contain all of the information that may be required to evaluate the Company. No representations or warranties, express or implied, are given by the Company or any of its affiliates, directors, officers, employees or advisers or any other person (each a **Limited Party**) regarding the accuracy or completeness of the information in this Presentation and no responsibility or liability whatsoever is accepted for the accuracy or sufficiency thereof or for any errors, omissions or misstatements, negligent or otherwise, relating thereto. The Company assumes no obligation to update the information in this Presentation. To the maximum extent permitted by law, each Limited Party expressly disclaims any and all liability (whether direct, indirect, consequential or contingent), including, without limitation, any liability arising out of fault or negligence on the part of any person, for any expenses, damages, costs or loss arising from the use of information contained in this Presentation including representations or warranties or in relation to the accuracy or completeness of the information, statements, opinions or matters, express or implied, contained in, arising out of or derived from, or for omissions from, this Presentation including, without limitation, any results, indications of prospective mineralisation, estimates or projections and any other information derived therefrom. Right Resources has not carried out due diligence investigations in connection with the preparation of this Presentation, nor has it verified any of the contents of this Presentation.

EMERGING AUSTRALIAN GOLD AND COPPER EXPLORER



Investment Highlights



Large, underexplored footprint in Tier-1 gold and copper province

- 100% owned 2,089 km² tenement package across Tumbarumba and New England Regions, NSW
- >90km of mineralised strike along and proximal to the Gilmore Fault Zone, a major crustal-scale structure



Flagship Pilot Project - Maiden drilling intersects gold mineralisation

- 4,800m diamond drilling program testing beneath extensive historical underground workings, where surface mapping returned gold grades up to 56.6 g/t
- Drilling confirms **proof-of-concept** that Pilot hosts a potential large-scale gold mineralisation system, with **multiple sheeted veins and stockwork zones intersected**
- Early results include **broad zones of sheeted vein mineralisation (42 m @ 0.2 g/t Au)** with locally higher-grade vein intervals
- Current work focused on **vectoring toward higher-grade zones** and optimising drill targets



Strong geological upside and exploration leverage

- Geological interpretation evolving from a simple granite model to a **large, multiphase intrusive complex**
- **LiDAR survey identifies extensive unrecorded historical workings** with no previous modern drill testing
- **CODES collaboration** led by Prof. David Cooke and Dr Francisco Testa, delivering a regional-scale geological and targeting framework



Strong technical, operational and financial capability with a track record of advancing exploration assets and creating shareholder value

CORPORATE OVERVIEW

A\$17M

Market Capitalisation¹

111.7M

Shares on issue¹

A\$7.7M

Cash as at 31 Dec 2025

Top Shareholders

NQ GOLDFIELDS PTY LTD	9.20%
SYED ABDEL NASSER BIN SYED HASSAN ALJUNIED	6.19%
CITICORP NOMINEES PTY LIMITED	6.03%
RIGHT SOLUTIONS AUSTRALIA PTY LTD	5.64%
FLOWER & DOUGH PTY LTD <HOWARD FAMILY A/C>	4.11%
BNP PARIBAS NOMINEES PTY LTD<HUB24 CUSTODIAL SERV LTD>	3.99%
DAMIEN HARRIS<DAMIEN HARRIS FAMILY A/C>	3.48%
INTERNATIONAL CATERING & ACCOMODATION PTY LTD	2.97%
BNP PARIBAS NOMINEES PTY LTD<IB AU NOMS RETAILCLIENT>	2.57%
JOHJA PTY LTD	2.44%
AGENS PTY LTD <THE MARK COLLINS S/F A/C>	1.97%
MR CAMERON JAMES NEIL LESLIE	1.57%
DEANNE PTY LTD<DEAN & LEANNE MORRIS A/C>	1.49%
MANGAKURI PTY LTD<THE MILLER FAMILY A/C>	1.35%
ELLISON SUPERANNUATION PTY LTD	1.24%
ROWLEY SUPER INVESTMENTS PTY LTD <ROWLEY FAMILY SUPER A/C>	1.03%

Experienced leadership and technical team



Graham Howard

Managing Director - 39+ years in geology and operations, with significant roles in major gold and copper projects such as Telfer and Boddington (Newcrest). Brings 10 years as a director and senior executive in the resources industry, including a successful ASX IPO (VHM Limited) within the last three years.



Lauren Robinson

Executive Director - 16+ years experience across mining and construction sectors, with a strong track record in strategic planning, capital raising, investor relations, and corporate governance. Held senior roles in small-cap gold and critical minerals including a successful ASX IPO.



Chris Brown

Non-Executive Chairman - 35+ years experience in national and international corporate advisory, strategic planning and directorships roles to a diverse range of clients in various industry sectors including mining.



Michael Willoughby

Non-Executive Director - 27+ years experience in resources and diversified industries, currently serving as Global Co-Head of Metals & Mining at Jefferies. Deep expertise in M&A, debt and equity markets and strategic advice.



Greg Winch

Non-Executive Director - 37+ years as a geologist in mineral exploration, development and operations, including Founder and Chief Geology & Strategic Officer at Allied Gold Corporation.

Technical Advisors

Prof. David Cooke & Dr Francisco Testa
Gavin Beer

UTAS CODES
Met-Chem Consulting

¹ Based on 111,742,665 shares on issue as of 17 March 2026 at \$0.15 per share. Excludes 19,940,000 Options and Performance Rights (see Company Prospectus dated 19 September 2025 for further details)

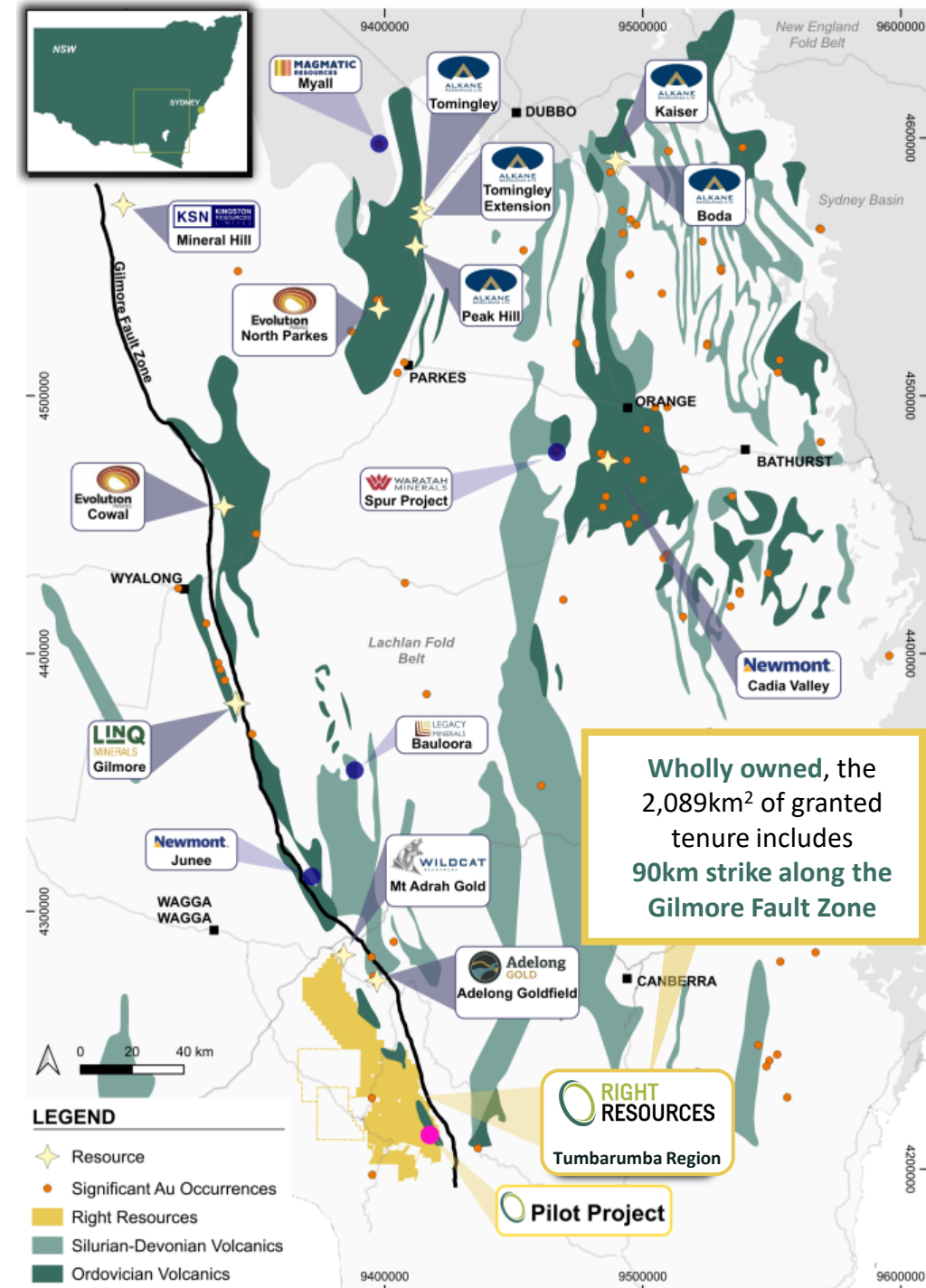
NEW DISCOVERY IN A WORLD CLASS Au-Cu PROVINCE

Lachlan Orogen and Gilmore Fault Zone

- Hosts 59Moz+ of gold¹ including multi-million-ounce deposits
- Major regional fault zone
- Company controls >90km of strike along this highly prospective structure

Majors Investing and Actively Exploring

- A\$16Bn in mining M&A since 2023²
- Growing interest from Tier 1 highlights the regions strategic value
- Recent discoveries (Spur Project, Waratah Minerals³) highlights prospectivity



Wholly owned, the 2,089km² of granted tenure includes 90km strike along the Gilmore Fault Zone

1 Department of Primary Industries and Regional Development NSW: <https://www.resources.nsw.gov.au/sites/default/files/2022-11/gold.pdf>

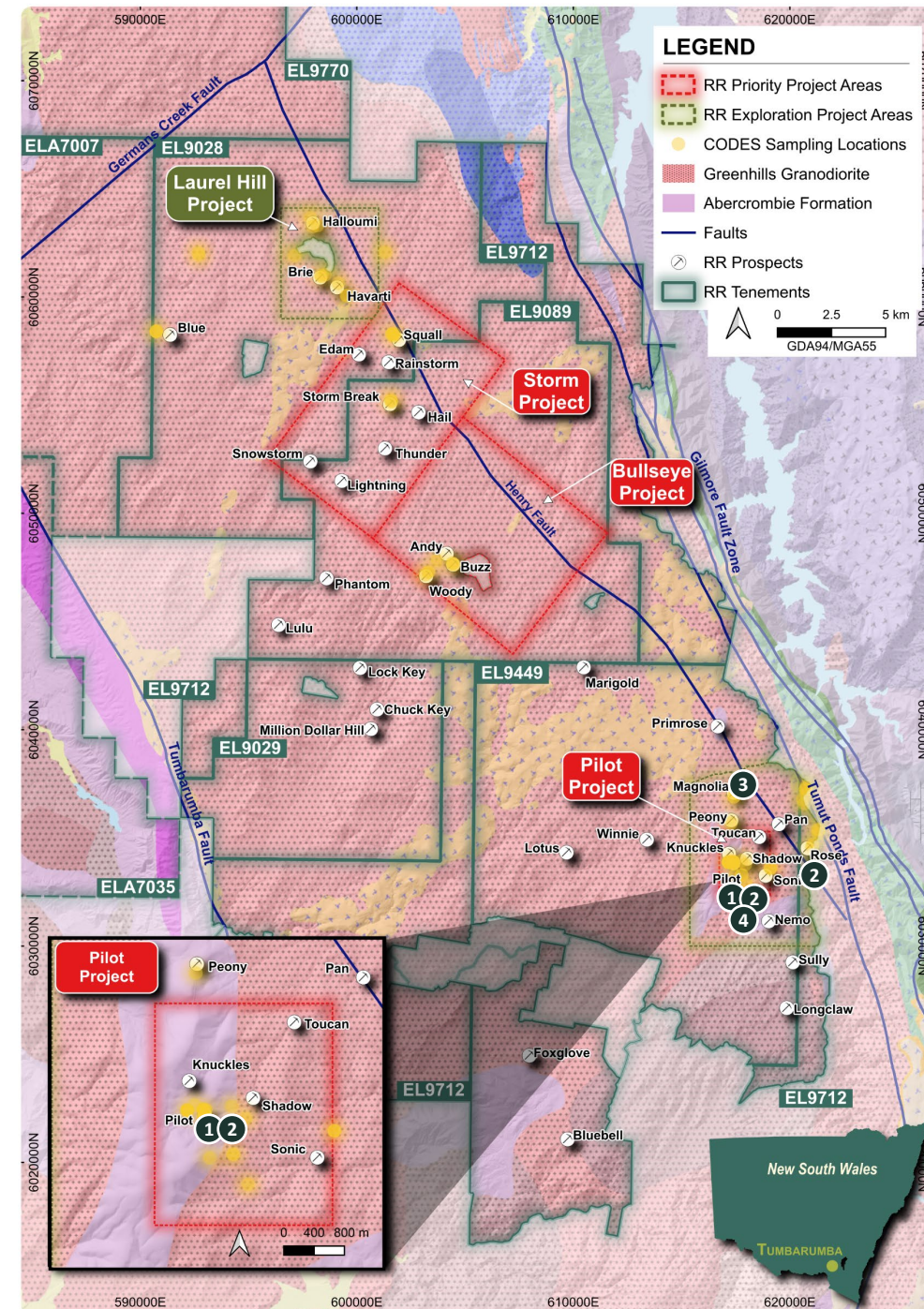
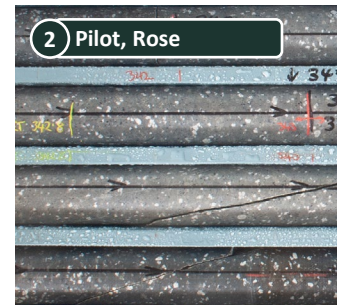
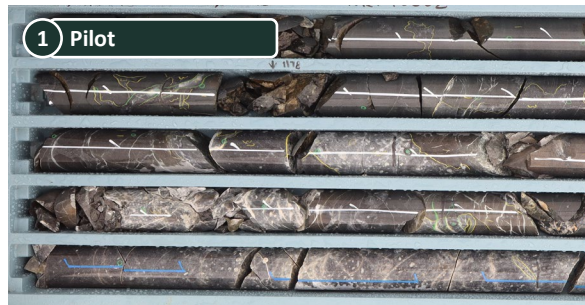
2 Appendix 1: NSW M&A Transactions

3 Waratah Minerals ASX Announcement 4 August 2025: Multiple zones of high-grade gold mineralisation extend Spur Gold Corridor

REWRITING THE GEOLOGICAL NARRATIVE

From misclassified granite to multiple intrusive and mineralisation centres

- Collaboration with **CODES** is “*advancing understanding of the hydrothermal history behind newly discovered Au and associated Cu systems across the Tumbarumba district in NSW; one of Australia’s most promising emerging mineral provinces*” (CODES Newsletter, March 2026)
- **Historical NSW records** interpreted the area as a simple granite intrusion with **no significant mineralising structures**
- **Company field mapping, petrology and drilling** indicates a **complex, multiphase intrusive and mineralised system**, including:
 - 1 Extensive sheeted vein and stockwork systems
 - 2 Dacite porphyries
 - 3 Diorite intrusions
 - 4 Gneissic basement rocks



Flagship Pilot Project

PILOT PROJECT

Flagship project with potential for large-scale gold mineralisation system

Size and location of mineralised system	2.4 x 2.9 km, proximal to Gilmore Fault Zone
Historical workings	<ul style="list-style-type: none"> Historical mining (1876–1932) produced 2,662t @ 38 g/t Au for 1,831oz; operations ceased in 1884 due to high costs and inadequate machinery¹ No modern drilling testing the opportunity
Company validation	<ul style="list-style-type: none"> Surface sampling returning anomalous gold ranging from 0.1g/t Au to 56.6 g/t Au¹ Electromagnetic anomalies identified, interpreted to extend >1km depth¹ RRPT0001 intersects dacite porphyry and sheeted veins returning 42m @ 0.2 g/t Au from 338m, with localized vein grades up to 5 g/t Au over 0.2m² Ground magnetic surveys identifies some structural controls
Interpretation	Potential for large-scale gold mineralisation system, with multiple stockwork zones and sheeted veins
Right to Negotiate completed	✓
Permit to support exploration	✓ Level 2 Forest Permit & Activity Permit
Next steps	<ul style="list-style-type: none"> 4,800m drilling program underway with assays pending Complete additional ground magnetic surveys



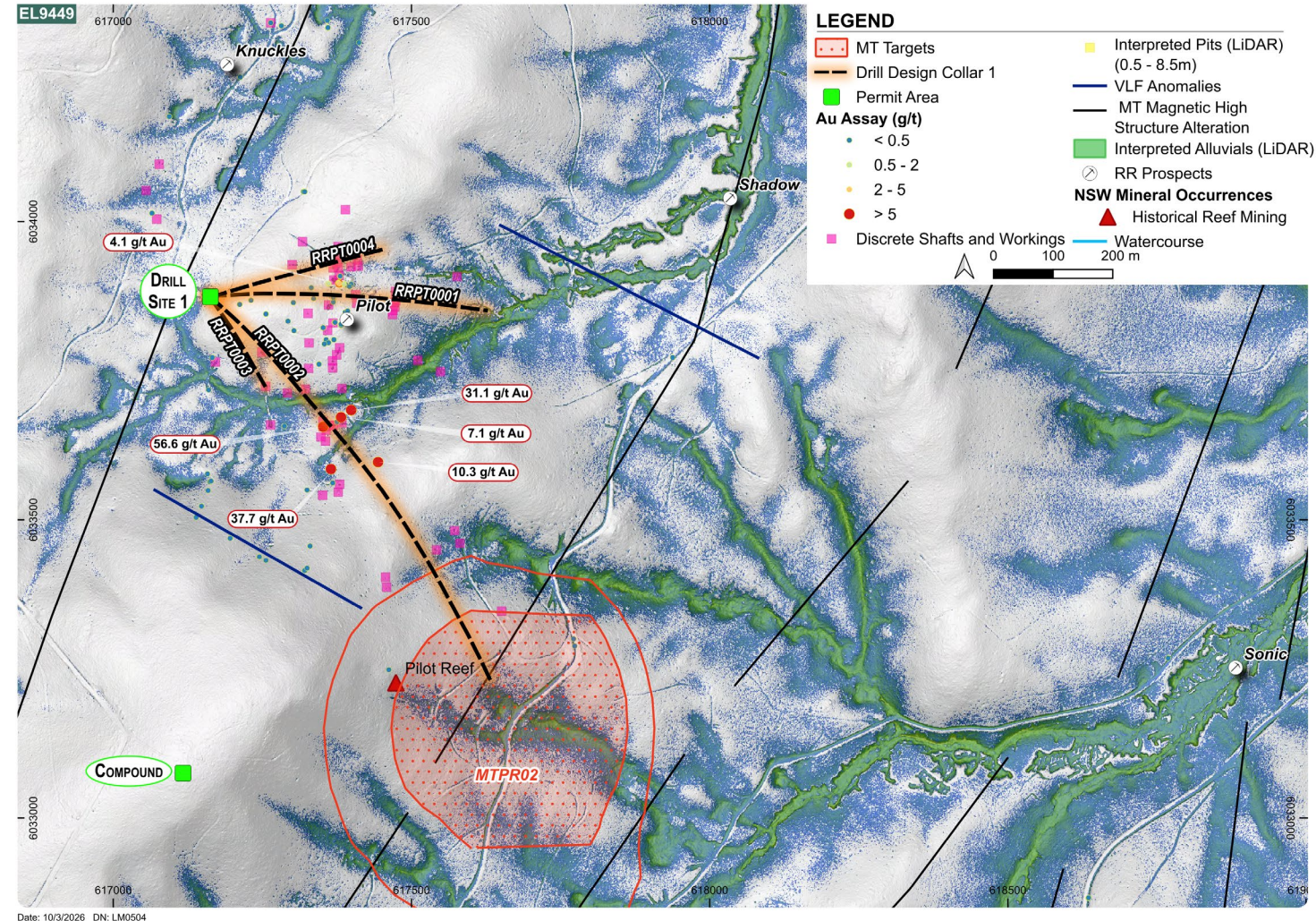
¹ Refer to Company Prospectus dated 19 September 2025

² Refer to ASX Announcement dated 5 February 2026

PILOT PROJECT

Phase 1 drilling program confirms proof-of-concept

Hole	Observations
RRPT0001	<ul style="list-style-type: none"> • Drilled to 699.4m • First ever successful drill hole intersection of gold system • Intersection of dacite porphyry and sheeted veins returning 42m @ 0.2 g/t Au from 338m, with localized vein grades up to 5 g/t Au over 0.2m¹ • Large alteration & sulphide halo >700m wide¹ • Downhole geophysics completed
RRPT0002	<ul style="list-style-type: none"> • Drilled initially to 648.2m, and extended to 1,400m • Targeting MTPR02 geophysical resistivity anomaly • Downhole geophysics completed • Assays pending
RRPT0003	<ul style="list-style-type: none"> • Drilled to 300.2m, shallow hole on hold and yet to be completed • Assays pending
RRPT0004	<ul style="list-style-type: none"> • Drilled to 441.1m • Targeting beneath underground workings • Downhole geophysics completed • Assays pending



¹ Refer to ASX Announcement dated 5 February 2026

PHASE 1 DRILLING PROGRAM

RRPT0001 shows significant alteration, veins, and mineralisation (sulphides)



Figure: Photos of core from RRPT0001 showing intersection of dacite porphyry (340-347m) and sheeted veins returning 42m @ 0.2 g/t Au from 338m, with vein grades up to 5 g/t Au over 0.2m¹

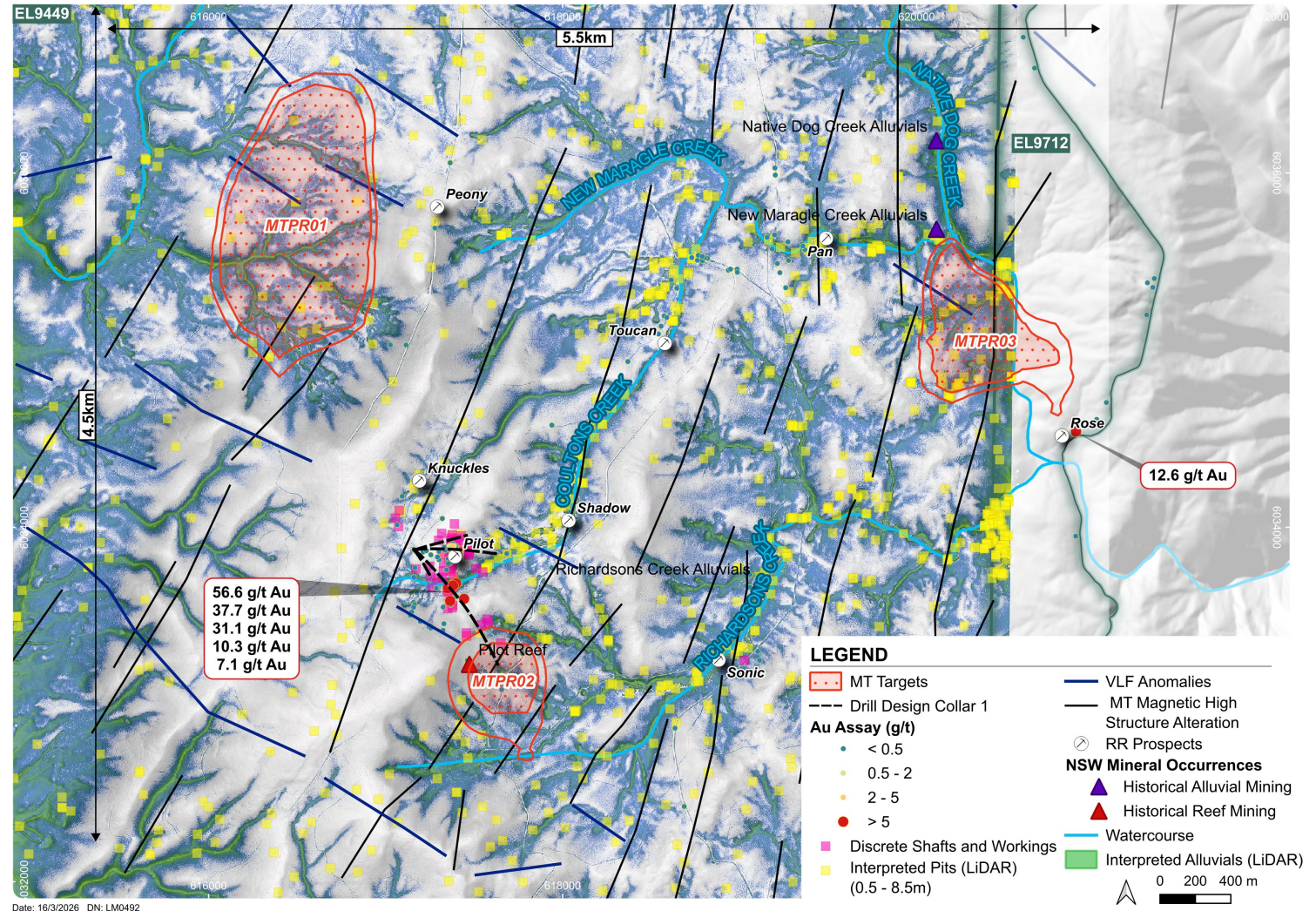
Figure: Photos of core from RRPT0001 showing significant alteration, veins, and mineralisation (sulphides)¹

¹ Refer to ASX Announcement dated 5 February 2026

MARAGLE PROJECT

Systematic targeting of multiple mineralised systems across the Maragle Goldfields

- **Large, structurally controlled gold district** aligned along the **Gilmore Fault Zone**
- Integrated geophysics, surface geology and alteration mapping supports the presence of **multiple, spatially distinct mineralised systems hosted within a 5.5 km x 4.5 km area**
- **Three high-priority mMT resistivity anomalies** defined across the broader Maragle Project ¹
 - MTPR02 – Pilot (Flagship)
 - MTPR03 – Rose
 - MTPR01 – Peony
- Targets show strong spatial coincidence with **historic workings**
- **Key near-term exploration focus, advanced in collaboration with CODES**



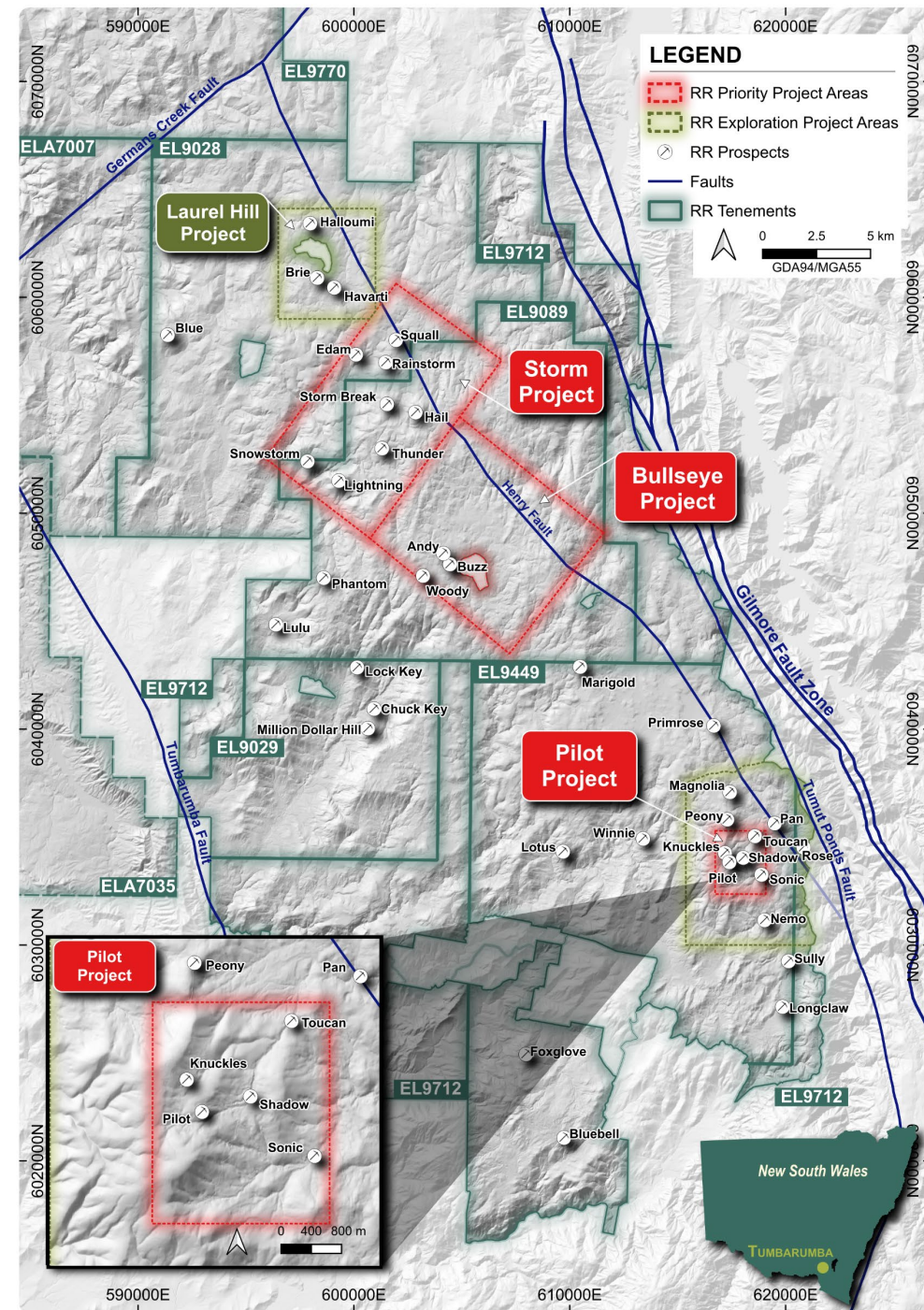
¹ Location as per previous data included in the Company Prospectus dated 19 September 2025 (ASX release: 27 October 2025)

Exploration Portfolio

TUMBARUMBA REGION

Strategic Au and Cu assets supporting long-term growth

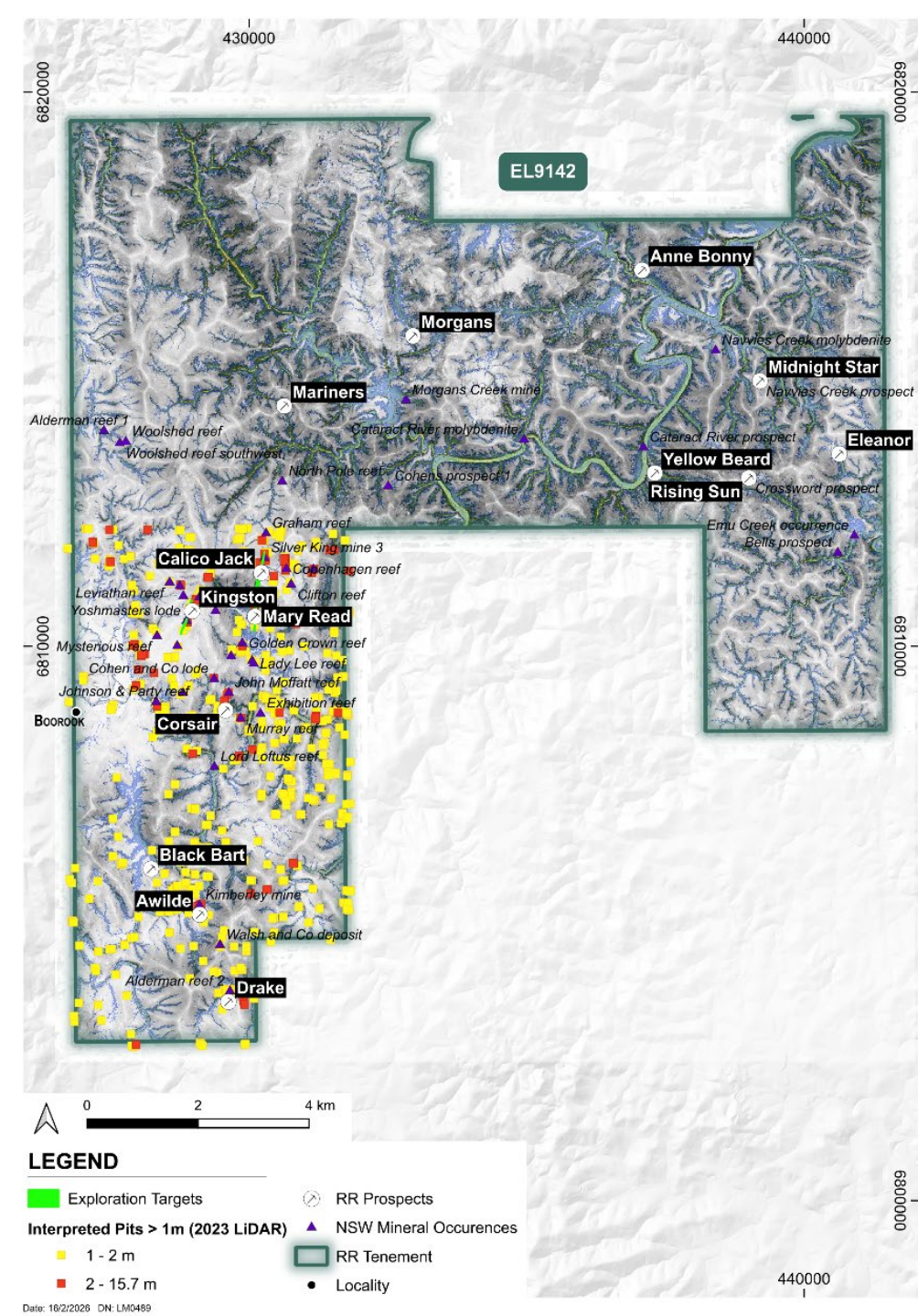
Project/Status	Storm Project	Bullseye Project	Laurel Hill
Commodity	Gold	Gold, Copper	Gold
Potential size of mineralised system ¹	10.2 x 6.1 km	8.5 x 7 km	4.5 x 5 km
Company validation ¹	<ul style="list-style-type: none"> Up to 1.1 g/t Au 26 geophysical anomalies Preliminary LiDAR observations requiring follow up 	<ul style="list-style-type: none"> Up to 46.5 g/t Au and up to 0.2% Cu 10 geophysical anomalies Preliminary LiDAR observations requiring follow up 	<ul style="list-style-type: none"> Up to 2.2 g/t Au Potential for vein/stockwork hosted gold mineralisation over a large strike length
Interpretation Potential	Large gold porphyry or intrusive related system	Orogenic	Large gold porphyry or intrusive related system
RTN completed no Native Title determined	✓	✓	✓
Permit to support exploration	Level 1	Level 1	Level 1



NEW ENGLAND REGION

High-grade Au & Ag optionality within a Tier-1 province

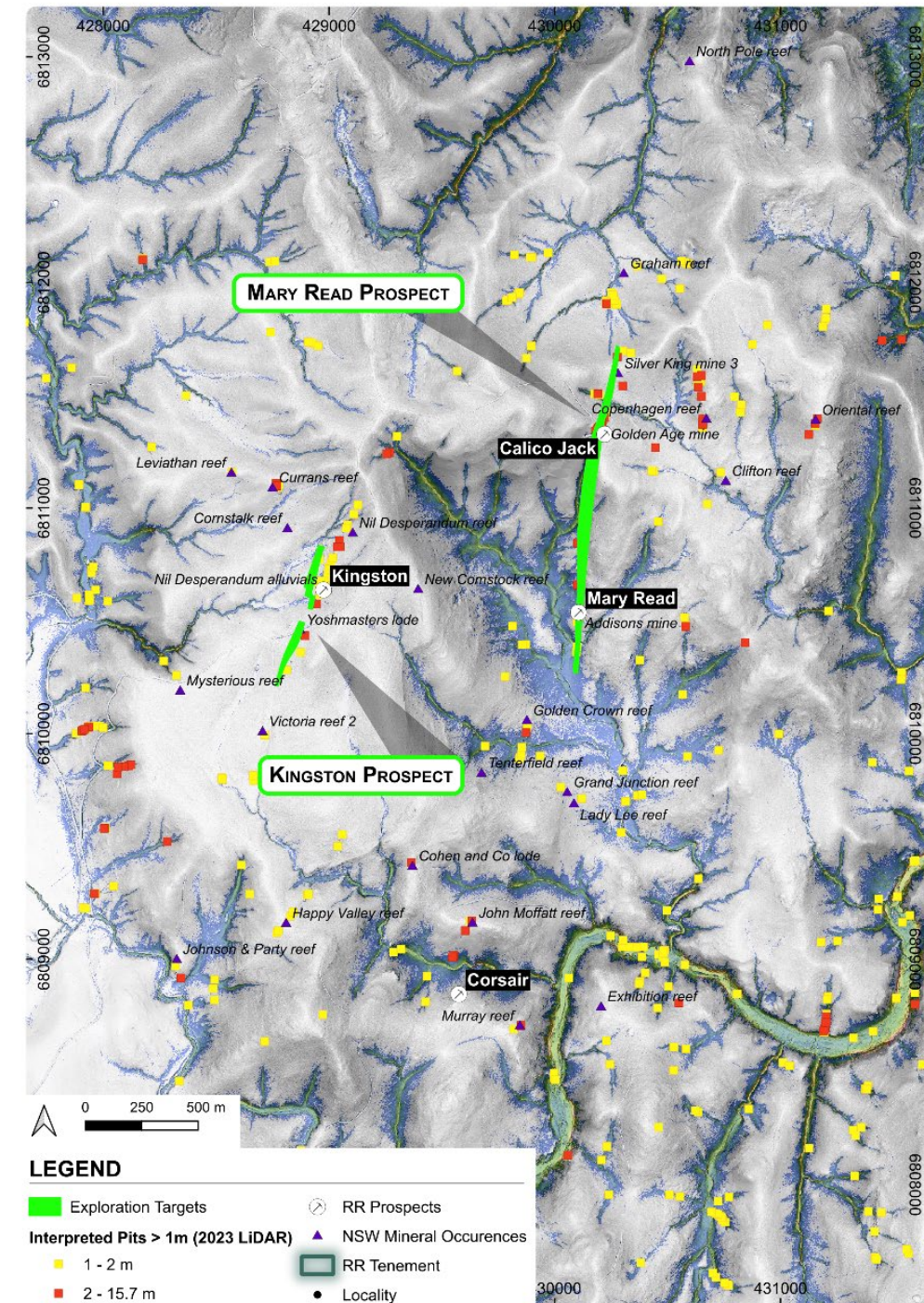
- **198 km² landholding** within the New England Orogen, NSW — a historically productive gold, silver and base-metals province
- Proven **high-grade lode and reef-style mineralisation**, with potential for broader stockwork and porphyry-related systems
- Extensive **historic mining and drilling**, with **limited modern exploration**
- **High-resolution LiDAR**, historic drilling and geophysics integrated to unlock new targets
- **Two Exploration Targets defined on EL9142**, providing **near-term drill-ready opportunities**
- Feb-26 announcement only focused on LiDAR interpretation from **SW corner**



KINGSTON & MARY READ PROSPECT

Defined Exploration Targets with strong Au–Ag upside

	Kingston	Mary Read
Commodity	Gold, Silver	Silver
Interpretation	<ul style="list-style-type: none"> ~650 m strike length, open along strike and at depth Quartz–sulphide reef mineralisation with high-grade Au and Ag 	<ul style="list-style-type: none"> ~1.5 km strike length, open at depth Part of the historic Boorook Silver Field, with very high historic Ag grades Reported historic production averaging ~567 g/t Ag, increasing to >1,900 g/t Ag in fresh sulphides
Historic Drilling ¹	<ul style="list-style-type: none"> 13 historic drillholes, 6 holes returning significant Au intercepts, including: <ul style="list-style-type: none"> 3 m @ 108 g/t Au and 102 g/t Ag from 58 m (B002) 1 m @ 2 g/t Au and 122 g/t Ag from 24 m (B011) 1 m @ 2 g/t Au and 136 g/t Ag from 31 m (B018) 	<ul style="list-style-type: none"> 10 historic drillholes, with 2 holes returning significant Ag intercepts, including: <ul style="list-style-type: none"> 4.6 m @ 75.6 g/t Ag from 52.9 m (J3D4) 0.8 m @ 262 g/t Ag from 58.5 m (J3D2)
Exploration Target ¹	<ul style="list-style-type: none"> Range of 300-400 kt at 3.7-4.9 g/t Au and 28-39 g/t Ag, containing 30-60 koz Au and 300-500 koz Ag 	<ul style="list-style-type: none"> Range of 1.8-4.5 Mt at 10-16 g/t Ag and 0.1-0.2 g/t Au, containing 600-2,300 koz Ag and 10-30 koz Au, noting gold is impacted by limited sampling of zones
Next Steps	<ul style="list-style-type: none"> Integrate LiDAR, magnetics and geology to refine priority targets across EL9142 Advance targeting for high-grade reef, porphyry and antimony–gold mineralisation Progress mapping and groundwork to define next-phase drill targets 	



PREMIUM AUSTRALIAN GOLD-COPPER OPPORTUNITY

District-Scale Discovery with Clear Line of Sight to Value

Why Right Resources

- **Large, underexplored gold–copper district**
Tier-1 province with >90 km of strike along the Gilmore Fault Zone
- **Maiden drilling delivers proof-of-concept**
Flagship Pilot Project intersects a large mineralisation system that includes sheeted and stockwork style veins
- **Multiple mineralised systems identified**
Confirmed through drilling, geophysics and mapping
- **First-mover advantage**
Extensive historic workings with no prior modern, systematic exploration

Pathway to Value Creation

- **Highly experienced leadership and technical team**
Proven track record in discovery, project advancement and capital markets
- **Near-term growth catalysts**
Ongoing drilling, assays pending and priority targets advancing with CODES
- **Continuous news flow through 2026**
Multi-project exploration pipeline across Tumbarumba and New England
- **Clear scalability upside**
District-scale system capable of supporting long-term growth and optionality



Ground Floor
41 – 47 Colin Street
West Perth WA 6005

RIGHT RESOURCES LTD
ABN 81 649 632 744

info@rightresources.com.au
www.rightresources.com.au

APPENDIX 1: NSW M&A TRANSACTION



Mining transactions in NSW since 2023

#	Target	Commodity	Acquirer	Date	Value (A\$bn)	Notes
1	CSA	Cu	Metals Acquisition	16-Jun-23	1.65	<i>n/a</i>
2	Rasp Mine	Ag-Pb-Zn	Coolabah (BHM)	17-Sep-24	<i>nmf</i>	\$1 acquisition price. Not material
3	S32 Illawarra Coal	C	GEAR / M Resources	29-Aug-24	2.43	Converted at spot FX
4	Northparkes (80%)	Cu-Au-Ag	Evolution	18-Dec-23	0.60	<i>n/a</i>
5	Newcrest (Cadia)	Au-Cu-Mo	Newmont	6-Nov-23	11.34	Value of Cadia (P727) and FX (p211)
6	Platina	Sc	Rio Tinto	28-Apr-23	0.02	Converted at spot FX
Total					16.0	

¹ Source: <https://metalsacquisition.com/investor-relations/news/news-details/2023/Metals-Acquisition-Limited-Closes-Purchase-of-the-CSA-Copper-Mine/default.aspx>

² Source: <https://www.listcorp.com/asx/bhm/broken-hill-mines-limited/news/cbh-to-acquire-the-operating-rasp-ag-pb-zn-mine-pinnacles-jv-3085429.html>

³ Source: [https://www.south32.net/docs/default-source/exchange-releases/illawarra-metallurgical-coal-sale-unconditional-0xbffca83e023bbf8.pdf?sfvrsn=d99e0a0b_0#:~:text=The%20upfront%20cash%20consideration%20will,5:%20US\\$180/t.](https://www.south32.net/docs/default-source/exchange-releases/illawarra-metallurgical-coal-sale-unconditional-0xbffca83e023bbf8.pdf?sfvrsn=d99e0a0b_0#:~:text=The%20upfront%20cash%20consideration%20will,5:%20US$180/t.)

⁴ Source: <https://minedocs.com/25/Evolution-Mining-Successful-Completion-of-Acquisition-of-80-Interest-in-Northparkes-PR-12182023.pdf>

⁵ Source: <https://announcements.asx.com.au/asxpdf/20230908/pdf/05tp3xg5zp08g0.pdf>

⁶ Source: <https://www.riotinto.com/en/news/releases/2023/rio-tinto-acquires-high-grade-scandium-project-in-australia>