

Date 18<sup>th</sup> March 2026

# Gold Duke Project

## Main Roads WA and Shire of Wiluna Grant Road User Access

### Highlights:

- Shire of Wiluna and Main Roads WA have granted access to both the Sandstone – Wiluna Road and the Goldfields Highway for the haulage of the ore from the Gold Duke Project.
- The Company has successfully executed Road User Agreements and progressed the submission for the Application for Works between Main Roads WA and Western Gold Resources Limited.
- This continues to progress the development of Western Gold Resources - Gold Duke Project, particularly the haulage of ore to Wiluna Mining Corporation's – Wiluna Processing Plant only 46 km's away.
- All parties will work together to advance access to road infrastructure whilst optimising the haulage route.

### Managing Director Cullum Winn commented:

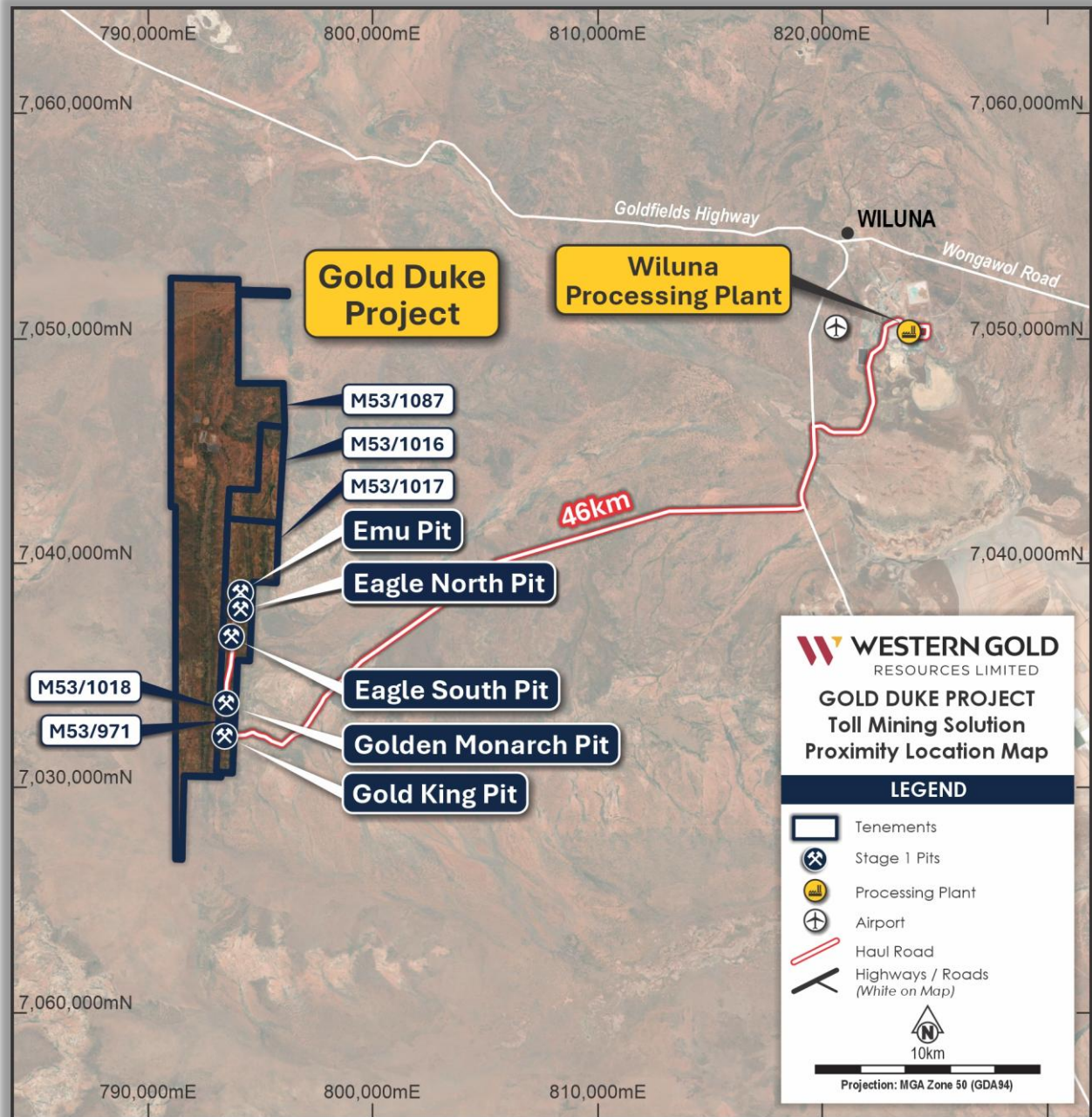
*"The Agreement reflects yet another key milestone for the Company and supports our planned activities moving forward to advance the Gold Duke Project. Establishing and maintaining a positive working relationship with key stakeholders such as Main Roads WA and Shire of Wiluna is pivotal to our flagship Gold Duke Project."*

**Western Gold Resources Limited (ASX: WGR) ("WGR" or "the Company")** is pleased to announce the execution of Road User Agreements ("**Agreements**") with Main Roads WA ("**MRWA**") and the Shire of Wiluna ("**SoW**") at its 100%-owned **Gold Duke Project** in Western Australia.

### Overview of the Agreement

These Agreements identify construction, ongoing maintenance and other requirements that allows the Company to optimally undertake haulage activities with existing infrastructure.

Figure 1 demonstrates the mine design locations and route to Wiluna Mining Corporation's milling facilities as per the executed access agreement.



**Figure 1: Gold Duke site layout, pit designs for the Eagle, Emu, Golden Monarch and Gold King deposits, and the haulage route to Wiluna Mining Corporation’s Milling facilities.**

**Use of Haul Road and Maintenance Responsibilities**

Both parties will initiate arrangements for joint site inspection meetings to be conducted and ensure the road surfaces remain in safe and workable condition for all users of these roads.

**Safety & Compliance**

Strict compliance with applicable WA Mining and WHS legislation is mandated with relevant cooperative frameworks to be initiated to manage and investigate notifiable infrastructure Maintenance & Regulatory review.

## **Strategic Importance for WGR**

The Agreement reflects strong support and alignment between local and state government, advancing key ore haulage logistics and coordinated use of critical infrastructure in the Wiluna region for the Gold Duke Project.

## **AUTHORISED FOR RELEASE BY THE COMPANY'S BOARD OF DIRECTORS**

### **For further information contact:**

Cullum Winn  
Managing Director

E: [cullumw@westerngoldresources.com.au](mailto:cullumw@westerngoldresources.com.au)

Gary Lyons  
Chairman

E: [gary@garylyons.com.au](mailto:gary@garylyons.com.au)

## **Appendix 1**

### **Previous ASX Announcements**

1. ASX Announcement 9th March 2026 "LOM Grade Control Drilling to Run Parallel with Mining"
2. ASX Announcement 9th February 2026 "Pre-mining Works Contract and Mine Operator Appointment"
3. ASX Announcement 29th December 2025 "Gold Duke Project - Updated Mineral Resource Estimate"
4. ASX Announcement 24th December 2025 "Decision to Mine – Gold Duke Project"
5. ASX Announcement 15<sup>th</sup> January 2025 "Preferred Mining Contractor for Gold Duke Project with deferred Payment Facility"
6. ASX Announcement 16<sup>th</sup> June 2025 "WGR Executes Binding Toll Milling Agreement for Gold Duke Project"