

Products / Process / People

Our sustainability culture is rooted in three key pillars – products, process, and people. Our long-term strategy and stakeholder interests reinforce each pillar.

Explore Boron's Potential



Products

Harness the full capabilities of our materials to enable the benefits of decarbonization.



Process

Minimize the environmental footprint of our operation and across our product value chain.



People

Create prosperity and well being for our employees and local communities.

/ Products

An Element with Impact



/ Applications Enable Decarbonization

Advanced material applications are important enablers to a low emissions future. The unique chemical properties of boron and lithium improve strength, heat resistance, and reduce weight. These attributes have a favorable impact to the electrification of vehicles and the global energy supply.



Electric Vehicles

Electrification, vehicle range, and safety enhanced with advanced materials given critical input in the permanent magnet, battery, steel chassis, and body panels.





Wind Energy

Clean energy generation and asset life supported by utilizing advanced materials in the permanent magnet and fiberglass blades.

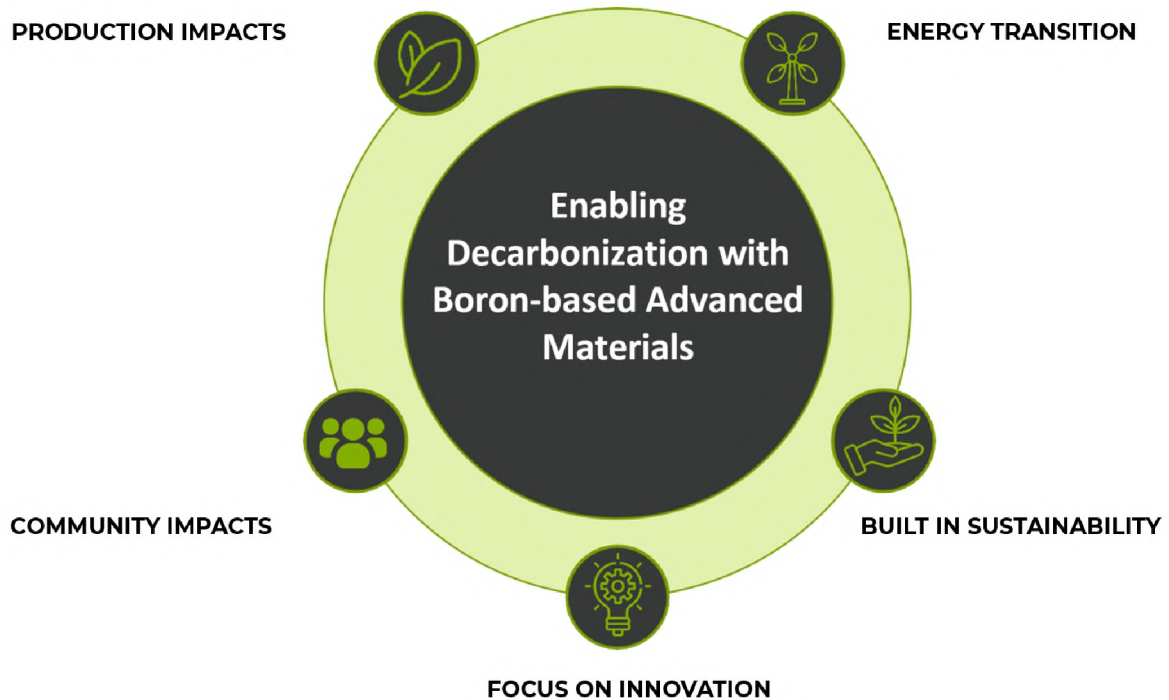


Semiconductors

Increased energy efficiency of heat and power exchange in integrated circuits and capacitor chips that power applications such as LCD panels, smart devices, and other mobility electronics.

/ Contribution to UN Sustainable Development Goals (SDGs)

Applications that support climate action, health, and well-being are at the forefront of industry focus. The versatility of advanced materials responds to customer demand across five application categories - all of which make a unique contribution to UN SDGs.



/ Process
Consuming
Fewer Resources



/ Minimizing Our Environmental Footprint

Our local operating approach emphasizes energy efficiency and strives to minimize the use of resources and disruption to our surrounding environment. Our integrated, on-site processing model eliminates energy-consuming steps across the product value chain, which helps our customers achieve their sustainability ambitions with a smaller carbon footprint.



In-Situ Extraction

We believe that our solution extraction approach may result in lower greenhouse gas emissions than open-pit or underground mining methods.



Water Recycling

Our closed-loop processing equipment and techniques are being designed with a goal to capture, recycle, and recirculate water across multiple process operations, which may minimize water consumption.





Natural Heat Sources

Our in-situ process yields a naturally heated mineral-laden solution, reducing the heat energy required in subsequent processing steps, which could lower greenhouse gas emissions relative to other extraction technologies.

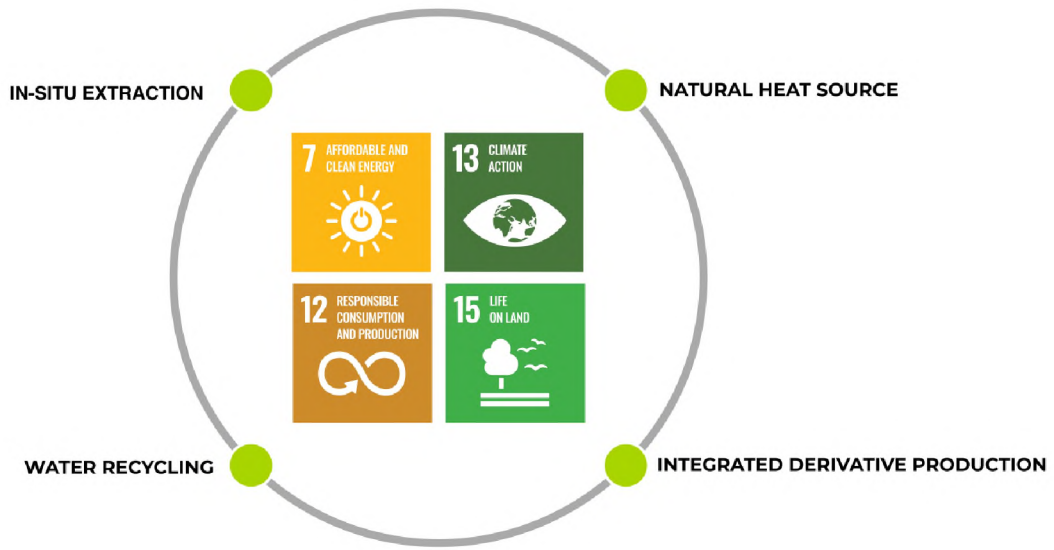


Integrated Derivative Production

The planned processing of advanced derivatives at our U.S. production facility will be at the same location as the upstream extraction likely allowing for more efficient logistics and use of energy resources.

/ Contribution to UN Sustainable Development Goals (SDGs)

Our determination to continually minimize our environmental footprint and maximize energy efficiency through integrated derivative processing supports the achievement of several UN SDGs.



/ People Creating Opportunity and Prosperity



/ Building for the Future

Our approach to collaboration and partnerships accelerates our development and adds to the vitality of the communities in which we live and work.



Workforce Investment

Our multi-disciplinary workforce offers opportunity for personal growth and well-being and contributes to the local community and economy.





Knowledge Creation

Our specialized training and focus on process improvement equip employees to tackle future challenges and stay central to a changing industry. We also advance critical materials knowledge through technical and research partnerships.



Community Development

Our investments in facilities, jobs, training, local sourcing, and community support create opportunities for suppliers, partners, and local businesses.

/ Contribution to UN Sustainable Development Goals

Our dedication to supporting personal and community prosperity and well-being through our operations contributes to the achievement of UN SDGs..



/ Sustainability Management

5E business and governance practices ensure safe, responsible, and sustainable operations.

Corporate Governance Statement

[View PDF](#)

Corporate Governance Guidelines

[View PDF](#)

Corporate Code of Business Conduct

[View PDF](#)

Equity Compensation Plan

[View PDF](#)

Get in Touch to Drive Innovation with Boron

We're here to answer your questions, provide insights about boron applications, and help you explore how 5E Advanced Materials can support your goals in clean energy, defense, and sustainability.

5E Advanced Materials Main Office

 9329 Mariposa Road, Suite 210 · Hesperia, California 92344

 +1 442-221-0225

 hello@5eadvancedmaterials.com

Your First Name

Your Last Name

youreemail@domain.com

Phone Number Here

Subject of Message

Select Here...



Your Message Here...



Send



[About](#)

[Boron 101](#)

[Investors](#)

[Sustainability](#)

[News](#)

[Careers](#)

[Contact](#)

ABOUT US

[Who We Are](#)

[Leadership Team](#)

[Board of Directors](#)

[Contact Us](#)

INVESTORS

[Company Overview](#)

[Press Releases](#)

[Stock Info](#)

[Events & Presentations](#)

[Documents](#)

[SEC Filings](#)

[Investor Relations](#)