



**Resource Minerals International Ltd**  
**(Formerly known as Resource Mining Corporation Limited)**

**ABN 97 008 045 083**

**Interim Report - 31 December 2025**

**Resource Minerals International Ltd (Formerly known as Resource Mining Corporation Limited)**

**Contents**

**31 December 2025**

|   |    |
|---|----|
| Corporate directory   | 2  |
| Directors' report   | 3  |
| Auditor's independence declaration  | 12 |
| Consolidated statement of profit or loss and other comprehensive income                   | 13 |
| Consolidated statement of financial position  | 14 |
| Consolidated statement of cash flows  | 16 |
| Notes to the consolidated financial statements  | 17 |
| Directors' declaration  | 27 |
| Independent auditor's review report to the members of Resource Mining Corporation Limited | 28 |

**Resource Minerals International Ltd (Formerly known as Resource Mining Corporation Limited)**

**Corporate directory**

**31 December 2025**

|                             |   |
|-----------------------------|---|
| Directors                   | Asimwe Kabunga (Executive Chairman)<br>Trevor Matthews (Non-Executive Director)<br>Noel O'Brien (Non-Executive Director)  |
| Company secretary           | Kellie Davis  |
| Registered office           | Level 5, 191 St. Georges Terrace<br>Perth WA 6000   |
| Principal place of business | Level 5, 191 St. Georges Terrace<br>Perth WA 6000<br><br>Telephone: +61 2 8072 1400<br>Website: <a href="http://www.resmin.com.au">www.resmin.com.au</a>  |
| Share registry              | Automic<br>Level 5, 126 Phillip Street<br>SYDNEY, NSW 2000<br><br>Telephone<br>Within Australia: 1300 288 664<br>Outside Australia: +61 2 9698 5414<br><a href="mailto:hello@automicgroup.com.au">hello@automicgroup.com.au</a> |
| Auditor                     | BDO Audit Pty Ltd<br>Level 9, Mia Yellagonga Tower 2<br>5 Spring Street<br>Perth Western Australia 6000<br><br>Telephone: +61 8 6382 4600   |
| Bankers                     | Westpac Bank<br>116 James Street<br>NORTHBRIDGE, WESTERN AUSTRALIA 6000   |
| Securities exchange listing | Resource Minerals International Ltd (formerly known as Resource Mining Corporation Limited) shares are listed on the Australian Securities Exchange (Home Exchange – Perth)<br>ASX Code: RMI                                    |

## Resource Minerals International Ltd (Formerly known as Resource Mining Corporation Limited)

### Directors' report 31 December 2025

The Directors present the financial report of the consolidated entity, consisting of Resource Minerals International Ltd (formerly known as Resource Mining Corporation Limited) (ASX: RMI) (“the Company”) and its controlled entities (“**Group**”), for the half-year ended 31 December 2025.

#### Directors

The names of the Company’s Directors in office during the half-year and until the date of this report are as below. Directors were in the office for the entire period unless otherwise stated:

Asimwe Kabunga  
Trevor Matthews  
Noel O’Brien

Executive Chairman  
Non-Executive Director  
Non-Executive Technical Director

#### Company Secretary

Kellie Davis

#### Review of operations

The loss for the Group after providing for income tax and non-controlling interest amounted to \$1,006,344 (31 December 2024: \$809,184).

## Saudi Arabia

On 21 August 2025, the Company announced it had exercised the RMI Option to proceed with the acquisition of AuKing Mining Limited’s (ASX:AKN) (“AuKing”) rights, obligations and interests in its Joint Venture (“JV”) arrangements that have been established in Saudi Arabia. No consideration was payable by RMI to AuKing in respect of the exercise of the RMI Option, other than RMI’s agreement to assume all AuKing’s obligations under the Saudi JV and to assist the joint venture partner Barg Alsaman Mining Company (“BSMC”) to secure the Shaib Marqan licence (subsequently granted) and the commencement of exploration activities at the Wadi Salamah project.

#### Wadi Salamah and Shaib Marqan Projects

Both projects are granted Exploration Licences (“EL”) located in central Saudi Arabia. Shaib Marqan is situated around 240km south-west of Riyadh and is easily accessible via sealed roads and minor unsealed roads. The EL area is 91.8km<sup>2</sup>. Wadi Salamah is located approximately 320 kilometres west-south-west of Riyadh, and 150 kilometres west of the Shaib Marqan project. The EL area is 98.7 km<sup>2</sup>



Figure 1: Project Location Map

**Shaib Marqan Rock Chip Results**

On 13 October 2025 the Company announced that a total of eighty-seven (87) rock chips were collected from the southern-central portion of the Shaib Marqan project. This area was targeted as the previous samples collected in 2024 and reported in January 2025, included high grade gold assay results<sup>1</sup>.

Field inspection conducted by RMI geologists observed abundant quartz veins, stockworks and shear zones, many with visible sulphide minerals, and several small-scale ancient mine workings on quartz veins and more recent alluvial mining in the wadi systems. Strike lengths and widths of veins were variable ranging from isolated quartz “blows” to veins in shear zones extending several hundred metres. The alluvial mining of the wadis is extensive in some areas.

Sample results greater than 1.0 g/t gold (Au) are listed in Table 1<sup>2</sup>. In addition to these higher grade results, a further 13 samples recorded anomalous gold grades between 0.20 g/t and 0.85 g/t Au indicating widespread gold anomalism in outcrop.

**Table 1: Shaib Marqan March 2025 Rock Chip Results >1g/t Au**

| <b>Sample ID</b> | <b>Au ppm</b> | <b>Description</b>  |
|------------------|---------------|---|
| SM149            | <b>40.35</b>  | Quartz vein, laminated, 1.5m wide                                 |
| SM177            | <b>9.62</b>   | Quartz vein, Fe stain, gossanous boxwork                          |
| SM173            | <b>7.30</b>   | Quartz vein boudins in shear, Fe stain                            |
| SM124            | <b>5.72</b>   | Quartz vein, Fe stain   |
| SM171            | <b>4.52</b>   | Schist with quartz stringers, 1m channel sample                   |
| SM139            | <b>4.18</b>   | Quartz vein - massive   |
| SM150            | <b>4.13</b>   | Schist hanging wall and foot wall composite sample to SM149       |
| SM148            | <b>3.30</b>   | Quartz vein, laminated, Fe stain                                  |
| SM157            | <b>2.36</b>   | Quartz vein, Fe stain   |
| SM181            | <b>2.01</b>   | Quartz stockwork veins, Fe stain, 1.5m x 1.0 m panel sample       |
| SM172            | <b>1.76</b>   | Schist, gossanous Fe stain 1.0m channel sample                    |
| SM165            | <b>1.68</b>   | Schist, quartz veinlets, trace pyrite, 1.0m channel sample        |
| SM125            | <b>1.52</b>   | Quartz veins in shear   |
| SM112            | <b>1.52</b>   | Schist, chlorite sheared trace pyrite.                            |
| SM136            | <b>1.36</b>   | Schist, quartz veinlets, trace pyrite, 0.6m channel sample        |
| SM178            | <b>1.08</b>   | Wall rock quartz stringers panel sample.                          |
| SM121            | <b>1.04</b>   | Wall rock quartz stringers panel sample.                          |
| SM111            | <b>1.02</b>   | Quartz vein in ancient working, siderite, trace oxidised sulphide |

Figure 2 shows the distribution of results on a satellite image which highlights the limited area covered by the reconnaissance work compared to the overall licence area.

Sampling was not exhaustive with many outcropping veins not sampled in the time available. Further sampling will be conducted as part of the next phase of exploration.

<sup>1</sup> ASX announcement 13 January 2025

<sup>2</sup> ASX announcement 13 October 2025

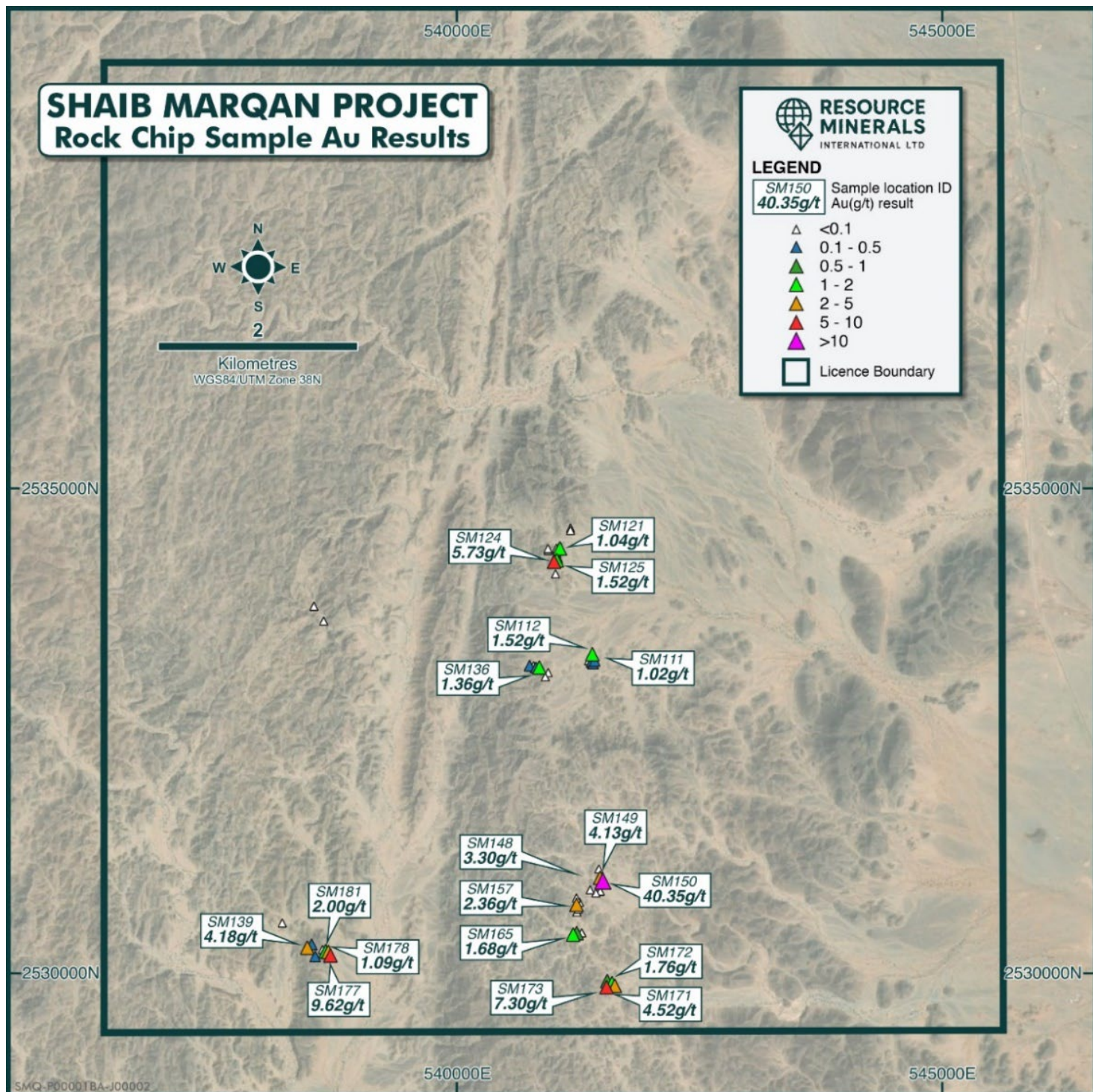
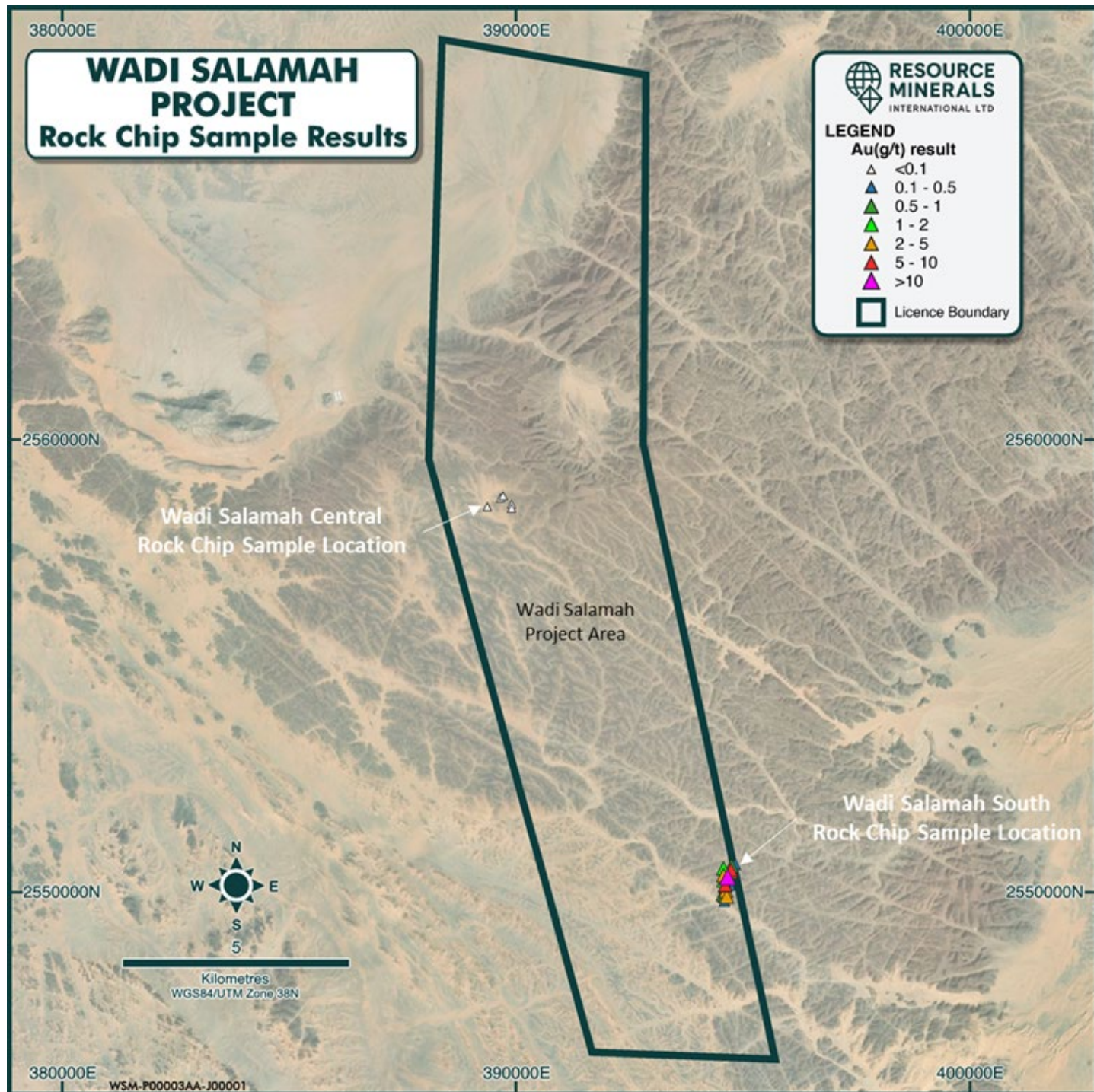


Figure 2: Shaib Marqan rock chip gold assay result locations

The results indicate endowment of gold is widespread in the area sampled hosted in quartz veins and shear zones often with abundant quartz veinlets. Weathered sulphide minerals with cubic pyrite visible as iron oxide pseudomorphs and gossanous boxwork occur in schists often in contact with quartz veins show gold distribution is in both veins and associated host rock. During the quarter follow up exploration was performed via detailed magnetic surveys to provide data for targeting drilling.

**Wadi Salamah Rock Chip Results**

Rock chip samples were collected in two locations named WS South and WS Central. The WS South area provided multiple samples with elevated gold and silver grades. Figure 33 shows the locations of the two areas of sampling within the Wadi Salamah project area.



**Figure 3: Wadi Salamah project area and rock chip sample locations**

The WS South samples were collected along a shear zone over a strike length of over 700 metres of outcrop. The shear progresses under the sand of a wadi at the southern extent of sampling. The northern extent continues beyond the lease boundary where sampling was terminated. The shear is subvertical and has a minimum observed width of approximately 10 metres and extends to over 30 metres wide in the central and southern portion of the sampled strike length.

Most samples from WS South are from quartz veins from within the shear zone. These veins are generally flat dipping and appear as sheeted veins or a stockwork within the shear.

Parallel to the shear are some massive quartz veins several metres thick which are also mineralised with gold and silver as seen in samples WS112 and WS116,

| Sample ID | Au ppm       | Ag ppm | Description  |
|-----------|--------------|--------|--|
| WS107     | <b>10.66</b> | 40.4   | Quartz vein, trace visible sulphide                        |
| WS104     | <b>7.56</b>  | 19.0   | Quartz vein, laminated, iron stain                         |
| WS110     | <b>5.50</b>  | 18.0   | Quartz vein, microcrystalline (sugary) texture, iron stain |
| WS112     | <b>4.27</b>  | 38.9   | Quartz vein massive 2m thick                               |
| WS103     | <b>3.09</b>  | 15.9   | Quartz vein, laminated                                     |
| WS116     | <b>2.73</b>  | 37.3   | Quartz vein massive 1.5 metres thick                       |
| WS106     | <b>2.30</b>  | 5.1    | Quartz vein trace visible sulphide                         |
| WS108     | <b>1.83</b>  | 1.7    | Quartz vein trace visible sulphide                         |
| WS105     | <b>1.78</b>  | 1.8    | Quartz vein, iron stain                                    |

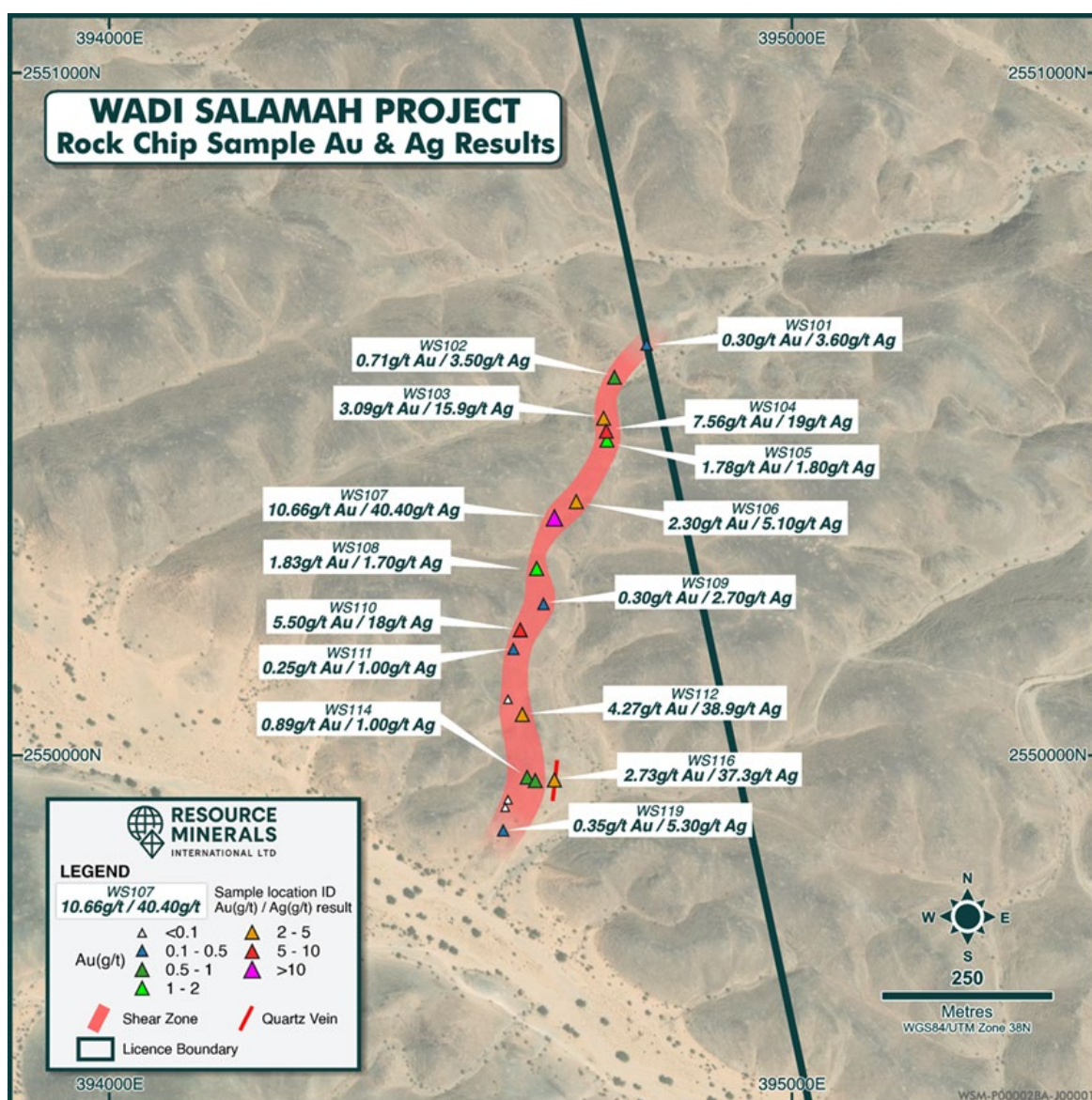


Figure 4: Wadi Salamah South rock chip sample gold and silver results in shear zone sampled over 700 metres strike length

### **Magnetic Survey to identify high-priority drill targets**

On 6 November 2025 the Company commenced a ground magnetic survey at its Shaib Marqan gold project and its Wadi Salamah gold–silver project. The program is designed to provide detailed structural and lithological data to refine drill-target definition for upcoming exploration campaigns. The work is being conducted in collaboration with CNNC Geological Science and Technology Co., Ltd, part of the China National Nuclear Corporation (CNNC).

The survey represents the first detailed exploration phase following RMI's recent confirmation of high-grade gold and silver mineralisation from rock-chip sampling across both projects<sup>3</sup>. Collected survey data will be integrated with existing geological information to map subsurface structures and target mineralised zones for detailed mapping and future drilling.



**Photo 1: Field team conducting ground magnetic survey using high-resolution magnetometer equipment (Wadi Salamah project)**

By 10 December 2025, field crews had completed all magnetic survey lines in the Wadi Salamah project, achieving a total of 1,010 kilometres of coverage, and have commenced data processing and analysis. CNNC technical teams are preparing the combined raw and processed datasets for delivery in the coming weeks.

With the Wadi Salamah ground survey field work completed, field teams mobilised to conduct ground survey work in the Shaib Marqan project. This marks the next stage of the systematic exploration program. The magnetic survey is designed to define structural controls, lithological boundaries, and potential mineralised corridors, supporting high priority drill target generation across both projects. This work is being integrated with earlier geological mapping and rock chip sampling that confirmed strong gold and gold-silver mineralisation across the project areas.

The results from the Wadi Salamah and Shaib Marqan ground survey programs will be integrated with existing datasets to refine structural interpretations and guide drill target definition for programs planned for early 2026.

---

<sup>3</sup> ASX announcement 13 October 2025



**Photo 2: Ground survey teams in the field at Wadi Salamah**

## Tanzania

### **Mpanda Project**

During the six months to December 2025, the Company progressed the drone magnetic survey over selected areas of the Mpanda copper gold Project. The Company conducting the survey has recently mobilised to site and will complete the programme in January 2026 with results announced once data interpretation and analysis is completed. This information combined with previous rock chip and some shallow drilling exploration results will be used to refine high-priority targets for upcoming mapping and drilling.

The Company undertook limited exploration activities on the Tanzanian nickel projects due to the current nickel market conditions.

## Finland

With improvements in the lithium market and lithium prices, at the end of 2025 the Company commenced a shallow drilling programme at the granted Köyhäjoki exploration permit. The programme is targeting 123 holes for 720 metres drilled, although weather conditions have caused material delays to the work program. Further information to be announced in the March 2026 quarter.

## Corporate

At the General Meeting held on 30 July 2025, a special resolution was passed by Shareholders to change the name of the Company from Resource Mining Corporation Limited to Resource Minerals International Ltd, with this process completed on 7 August 2025<sup>4</sup>.

On 31 July 2025, the Company entered into a funding agreement with RiverFort Global Capital Ltd (“RiverFort”) for the provision of funding of up to A\$5 million by the issue of convertible securities (“Agreement”). The first drawdown under the

---

<sup>4</sup> ASX announcement 7 August 2025

## **Resource Minerals International Ltd (Formerly known as Resource Mining Corporation Limited)**

### **Directors' report**

**31 December 2025**

Agreement of A\$1.3 million (before fees) was drawn on 31 July 2025, and 1.3 million convertible notes and 10,833,333 unlisted options exercisable at \$0.03 each and expiring on 31 July 2027, were issued to RiverFort on 1 August 2025.

Prior to the end of the half-year ended 31 December 2025, the Company redeemed the remaining convertible securities on issue to RiverFort to become debt free. The Agreement with RiverFort remains available for future funding requirements.

In December 2025, the Company completed a successful \$1 million placement to existing shareholders and new sophisticated investors at \$0.025 per share ("Placement"). Funds raised from the Placement were used towards:

- Exploration campaign at the Saudi Arabian projects,
- Repurchase of the outstanding RiverFort convertible securities,
- Geophysics and further exploration at the Mpanda Copper-Gold project in Tanzania,
- Exploration drilling at the Finland lithium project, and
- General working capital and Placement costs<sup>5</sup>.

### **Change in capital structure**

On 7 August 2025 the Company issued 26,190,476 Related Party Placement Shares at \$0.021 per share and 6,717,460 shares in lieu of Director fees at a deemed price of \$0.021 per share, as approved by shareholders at the General Meeting held on 30 July 2025.

The Company made a first drawdown under the RiverFort Funding Agreement on 31 July 2025 for \$1.3 million. On 1 August 2025 the Company issued 1,300,000 convertible securities convertible at \$0.021 and expiring 31 July 2026, and 10,833,333 unlisted options exercisable at \$0.03 each and expiring on 31 July 2027, pursuant to the Agreement. Subsequently on 14 October 2025 the Company issued 13,857,143 fully paid ordinary shares to RiverFort on conversion of 200,000 convertible notes at a conversion price of \$0.021 per share. On 11 December 2025 the Company issued 28,571,429 fully paid ordinary shares to RiverFort on conversion of 600,000 convertible securities at a conversion price of \$0.021 per share. Prior to the end of the half-year ended 31 December 2025, the Company redeemed the remaining 500,000 convertible securities on issue to RiverFort.

On 23 December 2025 the Company issued 40,000,000 fully paid ordinary shares at \$0.025 per share as part of a Placement, and 2,320,000 fully paid ordinary shares at \$0.025 per share in satisfaction of a portion of the consulting fees on the Placement.

### **Matters subsequent to the end of the financial half-year**

No matter or circumstance has arisen since 31 December 2025 that has significantly affected, or may significantly affect the Group's operations, the results of those operations, or the Group's state of affairs in future financial years.

### **Auditor's independence declaration**

A copy of the auditor's independence declaration as required under section 307C of the Corporations Act 2001 is included in this half-year financial report.

### **Exploration Results**

Where the Company references Exploration results and targets previously announced, it confirms that it is not aware of any new information or data that materially affects the information included in those announcements and all material assumptions and technical parameters underpinning the resource estimates with those announcements continue to apply and have not materially changed.

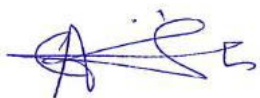
---

<sup>5</sup> ASX announcement 18 December 2025

**Resource Mining Corporation Limited (Formerly known as Resource Mining Corporation Limited)**  
**Directors' report**  
**31 December 2025**

This report is made in accordance with a resolution of directors, pursuant to section 306(3)(a) of the Corporations Act 2001.

On behalf of the Directors

A handwritten signature in blue ink, appearing to be 'Asimwe Kabunga', written over a horizontal line.

---

Asimwe Kabunga  
Executive Chairman

13 March 2026

**DECLARATION OF INDEPENDENCE BY DAVE ANDREWS TO THE DIRECTORS OF RESOURCE MINERALS INTERNATIONAL LTD**

As lead auditor for the review of Resource Minerals International Ltd for the half-year ended 31 December 2025. I declare that, to the best of my knowledge and belief, there have been:

1. No contraventions of the auditor independence requirements of the *Corporations Act 2001* in relation to the review; and
2. No contraventions of any applicable code of professional conduct in relation to the review.

This declaration is in respect of Resource Minerals International Ltd and the entities it controlled during the period.



**Dave Andrews**

**Director**

**BDO Audit Pty Ltd**

Perth

13 March 2026

**Resource Minerals International Ltd (Formerly known as Resource Mining Corporation Limited)**  
**Consolidated statement of profit or loss and other comprehensive income**  
**For the half-year ended 31 December 2025**

|   | Note | Consolidated<br>31 Dec 2025<br>\$ | 31 Dec 2024<br>\$ |
|---|------|-----------------------------------|-------------------|
| <b>Revenue</b>  |      |                                   |                   |
| Interest income   |      | 1,623                             | 919               |
| <b>Expenses</b>   |      |                                   |                   |
| Administration and corporate expenses                                 | 3    | (608,704)                         | (488,361)         |
| Exploration expenditure/impairment                                    | 3    | -                                 | (8,266)           |
| Borrowing costs   | 3    | (399,263)                         | (46,517)          |
| Share-based payments  | 9    | -                                 | (266,959)         |
| <b>Loss before income tax expense</b>                                 |      | <u>(1,006,344)</u>                | <u>(809,184)</u>  |
| Income tax expense  |      | -                                 | -                 |
| <b>Loss after income tax expense for the half-year</b>                |      | <u>(1,006,344)</u>                | <u>(809,184)</u>  |
| <b>Other comprehensive loss</b>                                       |      |                                   |                   |
| <i>Items that may be reclassified subsequently to profit or loss</i>  |      |                                   |                   |
| Foreign currency translation  |      | <u>41,235</u>                     | <u>(101,828)</u>  |
| Other comprehensive loss for the half-year, net of tax                |      | <u>41,235</u>                     | <u>(101,828)</u>  |
| <b>Total comprehensive loss for the half-year</b>                     |      | <u>(965,109)</u>                  | <u>(911,012)</u>  |
| <b>Loss for the half-year is attributable to:</b>                     |      |                                   |                   |
| Non-controlling interest  |      | (8,410)                           | (1,203)           |
| Members of Resource Minerals International Ltd                        |      | <u>(997,934)</u>                  | <u>(807,981)</u>  |
|   |      | <u>(1,006,344)</u>                | <u>(809,184)</u>  |
| <b>Total comprehensive loss for the half-year is attributable to:</b> |      |                                   |                   |
| Owners of Resource Minerals International Ltd                         |      | -                                 | -                 |
| Non-Controlling Interest  |      | <u>(8,410)</u>                    | <u>(1,203)</u>    |
| Owners of Resource Minerals International Ltd - Continuing Operations |      | (956,699)                         | (909,809)         |
| Members of Resource Minerals International Ltd                        |      | <u>(956,699)</u>                  | <u>(909,809)</u>  |
|   |      | <u>(965,109)</u>                  | <u>(911,012)</u>  |
|   |      | <b>Cents</b>                      | <b>Cents</b>      |
| Basic loss per share  | 13   | (0.13)                            | (0.12)            |

*The above consolidated statement of profit or loss and other comprehensive income should be read in conjunction with the accompanying notes*

**Resource Minerals International Ltd (Formerly known as Resource Mining Corporation Limited)**  
**Consolidated statement of financial position**  
**As at 31 December 2025**

|   | Note | Consolidated<br>31 Dec 2025<br>\$ | 30 June 2025<br>\$ |
|---|------|-----------------------------------|--------------------|
| <b>Assets</b>   |      |                                   |                    |
| <b>Current assets</b>   |      |                                   |                    |
| Cash and cash equivalents   |      | 557,681                           | 302,175            |
| Trade and other receivables   |      | 46,392                            | 47,443             |
| Total current assets  |      | <u>604,073</u>                    | <u>349,618</u>     |
| <b>Non-current assets</b>   |      |                                   |                    |
| Property, plant and equipment   |      | 334                               | 320                |
| Exploration and evaluation  | 4    | 10,321,829                        | 9,404,667          |
| Total non-current assets  |      | <u>10,322,163</u>                 | <u>9,404,987</u>   |
| <b>Total assets</b>   |      | <u>10,926,236</u>                 | <u>9,754,605</u>   |
| <b>Liabilities</b>  |      |                                   |                    |
| <b>Current liabilities</b>  |      |                                   |                    |
| Trade and other payables  | 5    | 499,023                           | 1,002,852          |
| Non-interest bearing liabilities  | 6    | 87,065                            | 87,197             |
| Total current liabilities   |      | <u>586,088</u>                    | <u>1,090,049</u>   |
| <b>Total liabilities</b>  |      | <u>586,088</u>                    | <u>1,090,049</u>   |
| <b>Net assets</b>   |      | <u>10,340,148</u>                 | <u>8,664,556</u>   |
| <b>Equity</b>   |      |                                   |                    |
| Issued capital  | 7    | 89,538,076                        | 86,978,044         |
| Reserves  | 8    | 166,180                           | 44,276             |
| Accumulated losses  |      | (79,152,793)                      | (78,154,859)       |
| Equity attributable to the members of Resource Minerals International Ltd |      | <u>10,551,463</u>                 | <u>8,867,461</u>   |
| Non-controlling interest  |      | (211,315)                         | (202,905)          |
| <b>Total equity</b>   |      | <u>10,340,148</u>                 | <u>8,664,556</u>   |

*The above consolidated statement of financial position should be read in conjunction with the accompanying notes*

**Resource Minerals International Ltd (Formerly known as Resource Mining Corporation Limited)**  
**Consolidated statement of changes in equity**  
**For the half-year ended 31 December 2025**

|  | <b>Issued capital</b> | <b>Accumulated losses</b> | <b>Reserves</b> | <b>Non-controlling interest</b> | <b>Total equity</b> |
|--|-----------------------|---------------------------|-----------------|---------------------------------|---------------------|
|  | <b>\$</b>             | <b>\$</b>                 | <b>\$</b>       | <b>\$</b>                       | <b>\$</b>           |
| <b>Six Months to 31 December 2025</b>                    |                       |                           |                 |                                 |                     |
| Balance at 1 July 2025                                   | 86,978,044            | (78,154,859)              | 44,276          | (202,905)                       | 8,664,556           |
| Loss after income tax expense for the half-year          | -                     | (997,934)                 | -               | (8,410)                         | (1,006,344)         |
| Other comprehensive income for the half-year, net of tax | -                     | -                         | 41,235          | -                               | 41,235              |
| Total comprehensive loss for the half-year               | -                     | (997,933)                 | 41,235          | (8,410)                         | (965,108)           |
| Issue of share capital                                   | 2,630,067             | -                         | -               | -                               | 2,630,067           |
| Capital raising costs                                    | (70,035)              | -                         | -               | -                               | (70,035)            |
| Issue of options   | -                     | -                         | 80,669          | -                               | 80,669              |
| Balance at 31 December 2025                              | 89,538,076            | (79,152,793)              | 166,180         | (211,315)                       | 10,340,148          |
| <b>Six Months to 31 December 2024</b>                    |                       |                           |                 |                                 |                     |
| Balance at 1 July 2024                                   | 85,539,731            | (81,289,069)              | 4,343,423       | (191,445)                       | 8,402,640           |
| Loss after income tax expense for the half-year          | -                     | (807,981)                 | -               | (1,203)                         | (809,184)           |
| Other comprehensive income for the half-year, net of tax | -                     | -                         | (101,828)       | -                               | (101,828)           |
| Total comprehensive loss for the half-year               | -                     | (807,981)                 | (101,828)       | (1,203)                         | (911,012)           |
| Issue of options   | -                     | -                         | 27,133          | -                               | 27,133              |
| Performance rights expensed                              | -                     | -                         | 239,826         | -                               | 239,826             |
| Expired performance rights                               | -                     | 3,923,586                 | (3,923,586)     | -                               | -                   |
| Balance at 31 December 2024                              | 85,539,731            | (78,173,464)              | 584,968         | (192,648)                       | 7,758,587           |

*The above consolidated statement of changes in equity should be read in conjunction with the accompanying notes*

**Resource Minerals International Ltd (Formerly known as Resource Mining Corporation Limited)**  
**Consolidated statement of cash flows**  
**For the half-year ended 31 December 2025**

|   | <b>Note</b> | <b>Consolidated</b> |                    |
|---|-------------|---------------------|--------------------|
|   |             | <b>31 Dec 2025</b>  | <b>31 Dec 2024</b> |
|   |             | <b>\$</b>           | <b>\$</b>          |
| <b>Cash flows from operating activities</b>                           |             |                     |                    |
| Payments to suppliers and employees (inclusive of GST)                |             | (646,708)           | (178,273)          |
| Interest received   |             | -                   | 919                |
| Interest and other finance costs paid                                 |             | (155,095)           | -                  |
|   |             | <u>(801,803)</u>    | <u>(177,354)</u>   |
| Net cash used in operating activities                                 |             |                     |                    |
| <b>Cash flows from investing activities</b>                           |             |                     |                    |
| Exploration and evaluation expenditure capitalised                    |             | (865,088)           | (234,875)          |
|   |             | <u>(865,088)</u>    | <u>(234,875)</u>   |
| Net cash used in investing activities                                 |             |                     |                    |
| <b>Cash flows from financing activities</b>                           |             |                     |                    |
| Proceeds from issue of shares   | 7           | 1,205,688           | -                  |
| Cost of issue of shares   |             | (12,035)            | -                  |
| Proceeds from borrowings  |             | 1,227,500           | 500,000            |
| Repayment of borrowings   |             | (500,000)           | -                  |
| Cost from borrowings  |             | -                   | (29,850)           |
|   |             | <u>1,921,153</u>    | <u>470,150</u>     |
| Net cash from financing activities                                    |             |                     |                    |
| Net increase/(decrease) in cash and cash equivalents                  |             | 254,262             | 57,921             |
| Cash and cash equivalents at the beginning of the financial half-year |             | 302,174             | 157,054            |
| Effects of exchange rate changes on cash and cash equivalents         |             | 1,245               | -                  |
|   |             | <u>557,681</u>      | <u>214,975</u>     |
| Cash and cash equivalents at the end of the financial half-year       |             |                     |                    |

*The above consolidated statement of cash flows should be read in conjunction with the accompanying notes*

**Resource Minerals International Ltd (Formerly known as Resource Mining Corporation Limited)**  
**Notes to the consolidated financial statements**  
**31 December 2025**

**Note 1. Statement of material accounting policies**

**Basis of Preparation**

This half-year financial report for the six months ended 31 December 2025 has been prepared in accordance with AASB 134 Interim Financial Reporting and the Corporations Act 2001 and was authorised for issue in accordance with a resolution of the directors on 13 March 2026.

These half-year financial reports do not include all the notes of the type normally included in annual financial reports and therefore cannot be expected to provide as full an understanding of the financial performance, financial position and financing and investing activities of the Company as the full financial reports.

The half-year financial report should be read in conjunction with the annual financial report for the year ended 30 June 2025 and any public announcements made by Resource Minerals International Ltd (formerly known as Resource Mining Corporation Limited) during the half-year reporting period in accordance with the continuous disclosure requirements of the Corporations Act 2001. For the purpose of preparing the half-year financial statements, the half-year has been treated as a discrete reporting period.

The financial report is presented in Australian dollars, which is the Company's functional and presentation currency.

Resource Minerals International Ltd (formerly known as Resource Mining Corporation Limited) is a for-profit entity for the purpose of preparing the half-year financial statements.

**Statement of Compliance**

These half-year financial statements comply with Australian Accounting Standards and International Financial Reporting Standards (IFRS).

**Adoption of new and revised standards**

**Early adoption of accounting standards**

The Group has not elected to apply any pronouncements before their operative date in the annual reporting year beginning 1 July 2025.

**New and amended standards not yet adopted by the Group**

There are no material new or amended standards not yet adopted by the Group.

**Resource Minerals International Ltd (Formerly known as Resource Mining Corporation Limited)**  
**Notes to the consolidated financial statements**  
**31 December 2025**

**Note 1. Statement of material accounting policies (continued)**

**Going Concern**

The financial report has been prepared on a going concern basis, which assumes continuity of normal business activities and the realisation of assets and the settlement of liabilities in the ordinary course of business.

For the half year ended 31 December 2025 the Group recorded a loss of \$1,006,344 (31 December 2024 loss \$809,184) and had net cash outflows from operating and investing activities of \$1,666,891 (31 December 2024 \$412,229). At 31 December 2025, the Group had a cash balance of \$557,681 (31 December 2024 \$214,975).

The ability of the Group to continue as a going concern is dependent on the realisation of value of the Group's projects and the future successful raising of funding through equity or other available forms of funding. These conditions indicate a material uncertainty that may cast a significant doubt about the Group's ability to continue as a going concern.

For the Group to be able to continue to carry out its exploration activity and to have sufficient working capital, it is dependent on the financial support from its shareholders to fund its working capital requirements and/or successfully raise capital. The Directors are satisfied they will be able to raise additional working capital as required and thus it is appropriate to prepare the financial statements on a going concern basis. In arriving at this position, the Directors have considered the following matters:

- The Group has current unused financing facilities of \$5 million available, via a funding agreement with RiverFort Global Capital Ltd which expires on 31 July 2028;
- Trade creditors and accrued expenditure at 31 December 2025 was \$499,023 (31 December 2024 \$1,180,228). The company expects it will be able to manage all trade creditors, accrued expenditure and other creditors on agreed terms of settlement;
- The Company expects to raise capital in the short term through additional capital; and
- There is an ability to reduce expenditure where required, the Directors would undertake steps to scale down its operations and reduce its discretionary expenditure in order to curtail cash outflows.

The Directors have assessed the cash flow requirements for the 12 months period from the date of approval of the financial statements and its impact on the Group and believe that by adopting the above course of action, there will be sufficient funds to meet the Group's working capital requirements.

Should the Group not be able to continue as a going concern, it may be required to realise its assets and discharge its liabilities other than in the ordinary course of business, and at amounts that differ from those stated in the financial statements. The financial report does not include any adjustments relating to the recoverability and classification of recorded asset amounts or liabilities that might be necessary should the Group not continue as a going concern.

The adoption of these Accounting Standards and Interpretations did not have any significant impact on the financial performance or position of the Group.

The following Accounting Standards and Interpretations are most relevant to the Group:

*Borrowings*

Loans and borrowings are initially recognised at the fair value of the consideration received, net of transactions costs. They are subsequently measured at amortised cost using the effective interest method.

**Resource Minerals International Ltd (Formerly known as Resource Mining Corporation Limited)**  
**Notes to the consolidated financial statements**  
**31 December 2025**

**Note 2. Segment Information**

The Group operates within three geographical segments within the mineral exploration and extraction industry, being Tanzania, Finland and Saudi Arabia. The segment information provided to the chief operating decision maker is as follows:

| 31 December 2025                  | Exploration & Corporate activities Saudi Arabia | Exploration & Corporate activities Tanzania | Exploration & Corporate activities Finland | Corporate activities Australia | Consolidated |
|-----------------------------------|---|---|--|--------------------------------|--------------|
| Segment revenue                   | -   | -   | -  | 1,623                          | 1,623        |
| Segment results before income tax | -   | (146,438)                                   | (3,223)                                    | (858,306)                      | (1,007,967)  |
| Loss before income tax            | -   | (146,438)                                   | (3,223)                                    | (856,683)                      | (1,006,344)  |

| 31 December 2025                   | Exploration & Corporate activities Saudi Arabia | Exploration & Corporate activities Tanzania | Exploration & Corporate activities Finland | Corporate activities Australia | Consolidated |
|------------------------------------|---|---|--|--------------------------------|--------------|
| Segment assets                     | 267,548   | 2,822,322                                   | 3,731,259                                  | 4,105,107                      | 10,926,236   |
| Segment liabilities                | -   | (427,132)                                   | (24,232)                                   | (134,725)                      | (586,088)    |
| Segment net assets / (liabilities) | 267,548   | 2,395,190                                   | 3,707,027                                  | 3,970,382                      | 10,340,148   |

| 31 December 2024                  | Exploration & Corporate activities Tanzania | Exploration & Corporate activities Finland | Corporate activities Australia | Consolidated |
|-----------------------------------|---|--|--------------------------------|--------------|
| Segment revenue                   | -   | -  | 919                            | 919          |
| Segment results before income tax | (50,574)                                    | (11,387)                                   | (748,142)                      | (810,103)    |
| Loss before income tax            | (50,574)                                    | (11,387)                                   | (747,223)                      | (809,184)    |

| 30 June 2025                       | Exploration & Corporate activities Tanzania | Exploration & Corporate activities Finland | Corporate activities Australia | Consolidated |
|------------------------------------|---|--|--------------------------------|--------------|
| Segment assets                     | 2,216,016                                   | 3,590,068                                  | 3,948,521                      | 9,754,605    |
| Segment liabilities                | (437,110)                                   | (16,886)                                   | (636,053)                      | (1,090,049)  |
| Segment net assets / (liabilities) | 1,778,906                                   | 3,573,182                                  | 3,312,468                      | 8,664,556    |

**Resource Minerals International Ltd**  
**Notes to the consolidated financial statements**  
**31 December 2025**

**Note 3. Expenses**

|  | <b>Consolidated</b> |                    |
|--|---------------------|--------------------|
|  | <b>31 Dec 2025</b>  | <b>31 Dec 2024</b> |
|  | <b>\$</b>           | <b>\$</b>          |
| Loss before income tax includes the following specific expenses: |                     |                    |
| <b>Administration and Corporate Expenses</b>                     |                     |                    |
| Consultants  | 200,841             | 199,787            |
| Directors' fees  | 196,138             | 210,125            |
| Compliance and regulatory expenses                               | 48,127              | 20,492             |
| Travel and accommodation   | 79,623              | (7,678)            |
| Marketing  | 42,466              | 10,310             |
| Legal fees   | 13,562              | 19,091             |
| Insurance  | 1,427               | 1,480              |
| Other expenses   | 20,712              | 7,056              |
| Foreign exchange (gain)/loss                                     | 5,808               | 38,008             |
| <b>Total administration and corporate expensed</b>               | <b>608,704</b>      | <b>488,361</b>     |
| <b>Borrowing costs</b>   |                     |                    |
| Interest and finance charges paid/payable on borrowings          | 318,594             | 46,517             |
| Issue of options in part consideration                           | 80,669              | -                  |
| <b>Total borrowing costs expensed</b>                            | <b>399,263</b>      | <b>46,517</b>      |
| <b>Share-based payments expense</b>                              |                     |                    |
| <i>Performance rights</i>  |                     |                    |
| Performance rights expensed                                      | -                   | 239,826            |
| <i>Options</i>   |                     |                    |
| Issue of options   | -                   | 27,133             |
| <b>Total share based performance payment</b>                     | <b>-</b>            | <b>266,959</b>     |
| <b>Exploration Expenditure and Project Costs</b>                 |                     |                    |
| Exploration and project costs                                    | -                   | 8,266              |
| <b>Total exploration and project costs</b>                       | <b>-</b>            | <b>8,266</b>       |

**Note 4. Non-current assets - exploration and evaluation**

|   | <b>Consolidated</b> |                    |
|---|---------------------|--------------------|
|   | <b>31 Dec 2025</b>  | <b>30 Jun 2025</b> |
|   | <b>\$</b>           | <b>\$</b>          |
| Exploration and evaluation - opening balance          | 9,404,667           | 8,588,646          |
| Capitalised exploration expenditure during the period | 865,088             | 697,493            |
| Foreign exchange                                      | 52,074              | 118,528            |
|   | <u>10,321,829</u>   | <u>9,404,667</u>   |

**Resource Minerals International Ltd (Formerly known as Resource Mining Corporation Limited)**  
**Notes to the consolidated financial statements**  
**31 December 2025**

**Note 4. Non-current assets - exploration and evaluation (continued)**

On 21 August 2025, the Company announced it had exercised the RMI Option to proceed with the acquisition of AuKing Mining Limited's (ASX:AKN) ("AuKing") rights, obligations and interests in its Joint Venture ("JV") arrangements that have been established in Saudi Arabia. No consideration was payable by RMI to AuKing in respect of the exercise of the RMI Option, other than RMI's agreement to assume all AuKing's obligations under the Saudi JV and to assist the joint venture partner Barg Alsaman Mining Company ("BSMC") to secure the Shaib Marqan licence, which was granted during the half year ended 31 December 2025, and the commencement of exploration activities at the Wadi Salamah project.

Exploration and evaluation costs are carried forward where right of tenure of the area of interest is current and they are expected to be recouped through sale or successful development and exploitation of the area of interest, or, where exploration and evaluation activities in the area of interest have not yet reached a stage that permits reasonable assessment of the existence of economically recoverable reserves.

**Note 5. Current liabilities - trade and other payables**

|                             | <b>Consolidated</b> |                    |
|-----------------------------|---------------------|--------------------|
|                             | <b>31 Dec 2025</b>  | <b>30 Jun 2025</b> |
|                             | \$                  | \$                 |
| Trade payables              | 396,408             | 430,330            |
| Related party liabilities   | 52,894              | 498,355            |
| Other payables and accruals | 49,721              | 74,167             |
|                             | <u>499,023</u>      | <u>1,002,852</u>   |

**Note 6. Current liabilities - non-interest bearing liabilities**

|  | <b>Consolidated</b> |                    |
|--|---------------------|--------------------|
|  | <b>31 Dec 2025</b>  | <b>30 Jun 2025</b> |
|  | \$                  | \$                 |
| Unsecured loans – Leticia Kabunga (A)      | 13,801              | 13,801             |
| Unsecured loans - Mashapo Minerals Ltd (B) | 66,026              | 66,026             |
| Unsecured loans - Rohan Patnaik (C)        | 7,238               | 7,370              |
|  | <u>87,065</u>       | <u>87,197</u>      |

**A) Unsecured loans due to Leticia Kabunga**

The unsecured loan is an A\$13,801 facility provided by Leticia Kabunga (the 1% shareholder of subsidiary Eastern Nickel Tanzania Limited). This loan is unsecured, interest free with no set repayment date.

**B) Unsecured loans due to Mashapo Minerals Ltd.**

The unsecured loan is a A\$66,026 facility provided by Mashapo Minerals Ltd. This loan is unsecured, interest free with no set repayment date. The loan facility was inherited from the 75% acquisition of Vancouver Mineral Resources Limited on 4 February 2024 as part of the agreement for being issued 75% shareholding in the Company.

**Resource Mining Corporation Limited**  
**Notes to the consolidated financial statements**  
**31 December 2025**

**Note 6. Current liabilities - non-interest bearing liabilities (continued)**

**C) Unsecured loans due to Rohan Patnaik**

The unsecured loan is a A\$7,238 facility provided by Rohan Patnaik (former shareholder of Element 92 Pte Limited, a Singaporean subsidiary acquired from Ropa Investments (Gibraltar) Limited). This loan is unsecured, interest free with no set repayment date. The loan facility was inherited on acquisition of Element 92 and relates to company secretary expenses previously funded by Mr Patnaik.

**Note 7. Equity - issued capital**

|                | Six months ended |             | Year ended  |             |
|----------------|------------------|-------------|-------------|-------------|
|                | 31 Dec 2025      | 31 Dec 2025 | 30 Jun 2025 | 30 Jun 2025 |
|                | Shares           | \$          | Shares      | \$          |
| Issued capital | 852,109,864      | 89,538,076  | 734,453,356 | 86,978,044  |

**Note 8. Equity - reserves**

|                               | Consolidated   |               |
|-------------------------------|----------------|---------------|
|                               | 31 Dec 2025    | 30 Jun 2025   |
|                               | \$             | \$            |
| Foreign currency reserve      | (30,555)       | (71,790)      |
| Capital contributions reserve | 88,934         | 88,933        |
| Share-based payments reserve  | 107,801        | 27,133        |
|                               | <b>166,180</b> | <b>44,276</b> |

*Foreign currency reserve*

The reserve is used to recognise exchange differences arising from the translation of the financial statements of foreign operations to Australian dollars. It is also used to recognise gains and losses on hedges of the net investments in foreign operations.

A summary of the foreign currency reserve is below:

|  | Consolidated    |                 |
|--|-----------------|-----------------|
|  | 31 Dec 2025     | 30 Jun 2025     |
|  | \$              | \$              |
| Foreign currency reserve                                   |                 |                 |
| Balance at the beginning of the period                     | (71,790)        | (206,184)       |
| Currency translation differences arising during the period | 41,235          | 134,394         |
| Balance at the closing of the period                       | <b>(30,555)</b> | <b>(71,790)</b> |

*Share-based payments reserve*

The reserve is used to recognise the value of equity benefits provided to employees and directors as part of their remuneration, and other parties as part of their compensation for services.

A summary of the share-based payment reserve is below:

**Resource Minerals International Ltd (Formerly known as Resource Mining Corporation Limited)**  
**Notes to the consolidated financial statements**  
**31 December 2025**

**Note 8. Equity - reserves (continued)**

|  | <b>Consolidated</b> |                    |
|--|---------------------|--------------------|
|  | <b>31 Dec 2025</b>  | <b>30 Jun 2025</b> |
|  | <b>\$</b>           | <b>\$</b>          |
| Share based payments reserve           |                     |                    |
| Balance at the beginning of the period | 27,134              | 4,460,675          |
| Performance rights expensed            | -                   | 239,828            |
| Issue of options - RiverFort           | 80,669              | 27,133             |
| Expired performance rights             | -                   | (4,700,502)        |
|  | <u>107,803</u>      | <u>27,134</u>      |
| Balance at the closing of the period   | <u>107,803</u>      | <u>27,134</u>      |

During the interim period, the Company made a drawdown on financing from RiverFort. As part of the drawdown, 10,833,333 options were issued to RiverFort for the value of A\$80,669.

*Performance rights*

During the interim period, nil performance rights were on issue. In the prior period on 31 December 2024 35,000,000 performance rights expired.

*Capital contribution reserve*

The capital contributions reserve is used to record the fair value adjustments of loans from shareholders who have provided the Company interest free loans and advances.

**Note 9. Share-based payments**

Total costs and share issue costs arising from share-based payment transactions recognised during the half year were as follows:

|  | <b>Consolidated</b> |                    |
|--|---------------------|--------------------|
|  | <b>31 Dec 2025</b>  | <b>31 Dec 2024</b> |
|  | <b>\$</b>           | <b>\$</b>          |
| <b>Recognised share-based payments costs</b>                                       |                     |                    |
| Issue of options - RiverFort   | 80,669              | 27,133             |
| Performance rights expensed  | -                   | 239,826            |
|  | <u>80,669</u>       | <u>266,959</u>     |
| <b>Total expense and issue costs arising from share-based payment transactions</b> | <u>80,669</u>       | <u>266,959</u>     |

**Performance rights**

During the interim period, there were nil performance rights expensed (31 December 2024: \$239,826).

**Note 10. Commitments**

**Mineral Tenement Commitments**

*Tanzania*

In order to maintain current rights of tenure to mining tenements, the Group has exploration and evaluation expenditure obligations up until the expiry of those licences. The following stated obligations are not provided for in the financial statements and represent a commitment of the Group for Tanzania:

**Resource Minerals International Ltd (Formerly known as Resource Mining Corporation Limited)**  
**Notes to the consolidated financial statements**  
**31 December 2025**

**Note 10. Commitments (continued)**

|   | <b>Consolidated</b>     |                         |
|---|-------------------------|-------------------------|
|   | <b>31 Dec 2025</b>      | <b>30 Jun 2025</b>      |
|   | <b>\$</b>               | <b>\$</b>               |
| Within 1 Year                                   | 444,032                 | 817,071                 |
| Later than 1 year but not later than five years | 1,776,126               | 1,779,183               |
| <b>Total</b>                                    | <b><u>2,220,158</u></b> | <b><u>2,596,254</u></b> |

*Massive Nickel Tanzania Limited*

As part of the Massive Nickel Tanzania Limited (MNTL) acquisition approved by shareholders on 29 September 2022, the Company has entered into a net smelter return royalty deed with KHPL, whereby a 1.5% net smelter return will be paid to KHPL for any future production arising from MNTL's Nickel exploration assets.

*Vancouver Minerals Resources Limited*

As part of the Vancouver Minerals Resources Limited (VMRL) acquisition approved by shareholders and acquired on 4 February 2024, the Company will enter into a net smelter return royalty deed with the minority shareholders, whereby a 1% net smelter return will be paid to the minority shareholders for all product recovered and sold from VMRL's Copper-Gold licenses.

*Finland*

In order to maintain current rights of tenure to mining tenements, the Group has exploration and evaluation expenditure obligations up until the expiry of those licences. The following stated obligations are not provided for in the financial statements and represent a commitment of the Group for Finland:

|   | <b>Consolidated</b>     |                         |
|---|-------------------------|-------------------------|
|   | <b>31 Dec 2025</b>      | <b>30 Jun 2025</b>      |
|   | <b>\$</b>               | <b>\$</b>               |
| Within 1 Year                                   | 1,270,752               | 748,021                 |
| Later than 1 year but not later than five years | 846,331                 | 2,281,226               |
| <b>Total</b>                                    | <b><u>2,117,083</u></b> | <b><u>3,029,247</u></b> |

*Saudi Arabia Joint Venture*

In order to maintain current rights of tenure to mining tenements, the Group has exploration and evaluation expenditure obligations up until the expiry of those licences. The following stated obligations are not provided for in the financial statements and represent a commitment of the Group for Saudi Arabia:

|   | <b>Consolidated</b>  |                    |
|---|----------------------|--------------------|
|   | <b>31 Dec 2025</b>   | <b>30 Jun 2025</b> |
|   | <b>\$</b>            | <b>\$</b>          |
| Within 1 Year                                   | 12,614               | -                  |
| Later than 1 year but not later than five years | 40,923               | -                  |
| <b>Total</b>                                    | <b><u>53,537</u></b> | <b><u>-</u></b>    |

**Note 11. Related party transactions**

*Transactions with related parties*

There were no new transactions with related parties during the current financial half-year.

**Resource Mining Corporation Limited**  
**Notes to the consolidated financial statements**  
**31 December 2025**

**Note 11. Related party transactions (continued)**

|  | <b>Consolidated</b> |                    |
|--|---------------------|--------------------|
|  | <b>31 Dec 2025</b>  | <b>31 Dec 2024</b> |
|  | \$                  | \$                 |
| Other transactions:                        |                     |                    |
| Performance rights expensed <sup>(i)</sup> | -                   | 239,826            |

- (i) The \$239,826 is 3 months of continued vesting of performance rights prior to expiry of the performance rights at 31 December 2024.

The following balances are outstanding at the reporting date in relation to transactions with related parties:

|  | <b>Consolidated</b> |                    |
|--|---------------------|--------------------|
|  | <b>31 Dec 2025</b>  | <b>30 Jun 2025</b> |
|  | \$                  | \$                 |
| Current payables:  |                     |                    |
| Trade payables and accrued expenditure to key management personnel | 57,294              | 498,355            |
| Trade payables to other related party <sup>(i)</sup>               | 13,801              | 13,801             |

- (i) The loan payable to Leticia Kabunga remains unchanged and unpaid. There is a repayment structure in place and no interest is being applied.

**Note 12. Interests in subsidiaries**

The consolidated financial statements incorporate the assets, liabilities and results of the following subsidiaries in accordance with the accounting policy described in note 1:

| <b>Name</b>                                  | <b>Principal place of business /<br/>Country of incorporation</b> | <b>Ownership interest</b> |                    |
|--|---|---------------------------|--------------------|
|  |   | <b>31 Dec 2025</b>        | <b>30 Jun 2025</b> |
|  |   | %                         | %                  |
| Resource Exploration Pty Ltd                 | Australia   | 100.00%                   | 100.00%            |
| Eastern Nickel Pty Ltd                       | Australia   | 100.00%                   | 100.00%            |
| Eastern Nickel Tanzania Ltd                  | Tanzania  | 99.00%                    | 99.00%             |
| Massive Nickel Pty Ltd                       | Australia   | 100.00%                   | 100.00%            |
| Element 92 Pte Ltd                           | Singapore   | 100.00%                   | 100.00%            |
| RMI Finland Oy (formerly Element92 Suomi Oy) | Finland   | 100.00%                   | 100.00%            |
| Vancouver Minerals Resources Ltd             | Tanzania  | 75.00%                    | 75.00%             |
| Massive Nickel Tanzania Ltd                  | Tanzania  | 99.00%                    | 99.00%             |
| Arabian Saya Mining Company                  | Saudi Arabia  | 50.00%                    | -                  |
| Segia Alhadithah Mining Company LLC          | Saudi Arabia  | 60.00%                    | -                  |

**Ultimate Parent**

Resource Minerals International Ltd (formerly known as Resource Mining Corporation Limited) is the ultimate Australian parent entity and the ultimate parent of the Group.

*Terms and conditions*

All transactions were made on normal commercial terms and conditions and at market rates.

**Resource Minerals International Ltd (Formerly known as Resource Mining Corporation Limited)**  
**Directors' declaration**  
**31 December 2025**

**Note 13. (Loss)/Earnings per share**

|   | <b>Consolidated</b> |                    |
|---|---------------------|--------------------|
|   | <b>31 Dec 2025</b>  | <b>31 Dec 2024</b> |
|   | <b>\$</b>           | <b>\$</b>          |
| <i>Earnings per share for loss</i>  |                     |                    |
| Loss after income tax   | (1,006,344)         | (809,184)          |
| Non-controlling interest  | <u>8,410</u>        | <u>1,203</u>       |
| Loss after income tax   | <u>(997,934)</u>    | <u>(807,981)</u>   |
| Loss after income tax used in calculating diluted earnings per share                  | <u>(997,934)</u>    | <u>(807,981)</u>   |
|   | <b>Number</b>       | <b>Number</b>      |
| Weighted average number of ordinary shares used in calculating basic loss per share   | 771,586,713         | 652,347,787        |
| Weighted average number of ordinary shares used in calculating diluted loss per share | 771,586,713         | 652,347,787        |
|   | <b>Cents</b>        | <b>Cents</b>       |
| Basic loss per share  | (0.13)              | (0.12)             |
| Diluted loss per share  | (0.13)              | (0.12)             |

**Note 14. Events after the reporting period**

No matter or circumstance has arisen since 31 December 2025 that has significantly affected, or may significantly affect the Group's operations, the results of those operations, or the Group's state of affairs in future financial years.

**Resource Minerals International Ltd (Formerly known as Resource Mining Corporation Limited)**  
**Directors' declaration**  
**31 December 2025**

1. In the opinion of the directors:

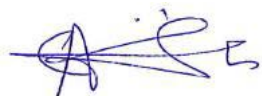
a) The financial statements and notes of the Company for the half-year ended 31 December 2025 are in accordance with the Corporations Act 2001, including:

- i) complying with Accounting Standard AASB 134 *Interim Financial Reporting* and the *Corporations Regulations 2001*; and
- ii) giving a true and fair view of the Company's financial position as at 31 December 2025 and of its performance for the half-year ended on that date; and

b) there are reasonable grounds to conclude that at the time of the directors' declaration, the entity will be able to pay its debts as and when they fall due.

2. This declaration has been made after receiving the declarations required to be made to the directors in accordance with Section 303(5)(a) of the Corporations Act 2001 for the half-year ended 31 December 2025.

This declaration is signed in accordance with a resolution of the Board of Directors.



---

Asimwe Kabunga  
Executive Chairman

13 March 2026

## INDEPENDENT AUDITOR'S REVIEW REPORT

To the members of Resource Minerals International Ltd

### Report on the Half-Year Financial Report

#### Conclusion

We have reviewed the half-year financial report of Resource Minerals International Ltd (the Company) and its subsidiaries (the Group), which comprises the consolidated statement of financial position as at 31 December 2025, the consolidated statement of profit or loss and other comprehensive income, the consolidated statement of changes in equity and the consolidated statement of cash flows for the half-year ended on that date, material accounting policy information and other explanatory information, and the directors' declaration.

Based on our review, which is not an audit, we have not become aware of any matter that makes us believe that the accompanying half-year financial report of the Group does not comply with the *Corporations Act 2001* including:

- i. Giving a true and fair view of the Group's financial position as at 31 December 2025 and of its financial performance for the half-year ended on that date; and
- ii. Complying with Accounting Standard AASB 134 *Interim Financial Reporting and the Corporations Regulations 2001*.

#### Basis for conclusion

We conducted our review in accordance with ASRE 2410 *Review of a Financial Report Performed by the Independent Auditor of the Entity*. Our responsibilities are further described in the *Auditor's Responsibilities for the Review of the Financial Report* section of our report. We are independent of the Company in accordance with the auditor independence requirements of the *Corporations Act 2001* and the ethical requirements of the Accounting Professional and Ethical Standards Board's APES 110 *Code of Ethics for Professional Accountants (including Independence Standards)* (the Code) that are relevant to the audit of the annual financial report in Australia. We have also fulfilled our other ethical responsibilities in accordance with the Code.

We confirm that the independence declaration required by the *Corporations Act 2001* which has been given to the directors of the Company, would be the same terms if given to the directors as at the time of this auditor's review report.

#### Material uncertainty relating to going concern

We draw attention to Note 1 in the financial report which describes the events and/or conditions which give rise to the existence of a material uncertainty that may cast significant doubt about the Group's ability to continue as a going concern and therefore the Group may be unable to realise its assets and discharge its liabilities in the normal course of business. Our conclusion is not modified in respect of this matter.

### **Responsibility of the directors for the financial report**

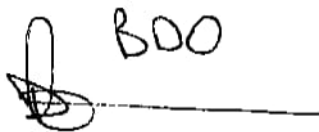
The directors of the company are responsible for the preparation of the half-year financial report that gives a true and fair view in accordance with Australian Accounting Standards and the *Corporations Act 2001* and for such internal control as the directors determine is necessary to enable the preparation of the half-year financial report that is true and fair and is free from material misstatement, whether due to fraud or error.

### **Auditor's responsibility for the review of the financial report**

Our responsibility is to express a conclusion on the half-year financial report based on our review. ASRE 2410 requires us to conclude whether we have become aware of any matter that makes us believe that the half-year financial report is not in accordance with the *Corporations Act 2001* including giving a true and fair view of the Group's financial position as at 31 December 2025 and its performance for the half-year ended on that date, and complying with Accounting Standard AASB 134 *Interim Financial Reporting and the Corporations Regulations 2001*.

A review of a half-year financial report consists of making enquiries, primarily of persons responsible for financial and accounting matters, and applying analytical and other review procedures. A review is substantially less in scope than an audit conducted in accordance with Australian Auditing Standards and consequently does not enable us to obtain assurance that we would become aware of all significant matters that might be identified in an audit. Accordingly, we do not express an audit opinion.

**BDO Audit Pty Ltd**



**Dave Andrews**

**Director**

Perth, 13 March 2026