

ASX Announcement 12 March 2026

Major Drilling Campaigns Underway at Leonora South Gold Project

Highlights

- **~6,000m RC program** has commenced at the Leonora South Gold Project in partnership with Mineral Mining Services Pty Ltd.
- **The RC program targets five high-priority areas:** Orion, Sapphire, Eclipse, Justice, and Euroa, designed to systematically grow and de-risk the existing JORC resource base.
- **Mobilisation of a second, follow-up AC program** at the Whistler and Altona prospects to test extensions of recent high-grade discoveries.
- **Drilling is part of a broader district-scale** exploration push, following recent high-grade 1m assay results including **1m @ 25.21 g/t Au¹**.
- **The MMS 'Drill-for-Equity' arrangement** preserves cash reserves while aligning MMS with GoldArc's long-term success.

GoldArc Resources Limited (ASX:GA8) ('GoldArc' or 'the Company') is pleased to announce the commencement of two significant and concurrent drilling programs at its Leonora South Gold Project, Western Australia.

The primary campaign comprises approximately 6,000m of Reverse Circulation (RC) drilling, managed in collaboration with the Company's strategic partner, Mineral Mining Services Pty Ltd (MMS). This program is a critical catalyst in GoldArc's strategy to expand its current 200,000oz JORC resource base by testing depth and strike extensions across five key prospect areas.

In tandem, the Company has commenced a follow-up Aircore (AC) drilling program totalling approximately 3,000m across the Whistler and Altona prospects. This follows the successful maiden RC program which recently identified new mineralised systems, including a standout intercept of **1m @ 25.21 g/t Au¹** at Whistler.

GoldArc Resources' Managing Director, Paul Stephen, commented:

"The mobilisation of two programs at Leonora South underscores our aggressive resource growth phase. By partnering with MMS, we are not only securing Tier-1 technical expertise but also utilising a capital-efficient 'drill-for-equity' model that keeps our balance sheet strong. These programs are designed to follow-up on the exceptional high-grade results we've seen recently and to provide the density of data required to materially upgrade our resource inventory over the coming months."

¹ See GA8 ASX Announcement "High Grade 1m Assays Confirm New Gold Discoveries" dated 3 March 2026



ASX:GA8

GoldArc Resources

goldarcres.com.au

104 Colin Street
West Perth WA 6005

+61 8 9420 8208



RC Drilling Program: Orion, Sapphire, Eclipse, Justice & Euroa

The 6,000m RC program is scheduled to run over the next two months. The program is designed to deliver high-quality JORC-compliant data to support future resource estimations and potential mine planning.

Target Objectives

- **Orion & Sapphire:** Infill and extensional drilling to improve confidence and test for deeper mineralised shoots.
- **Eclipse & Justice:** Systematic testing of structural targets identified through recent geophysical and geochemical surveys.
- **Euroa:** Following up on historical intercepts to define the scale of the mineralised envelope.



Figure 1 – RC rig at Leonora South, in partnership with Mineral Mining Services Pty Ltd.

Follow-up AC Program: Whistler & Altona

Following the maiden RC drilling success reported on 3 March 2026, the Company has fast-tracked an AC program to further delineate the shallow footprint of the Whistler and Altona discoveries.

The program will comprise approximately 104 holes for approximately 3,000m, focusing on:

ASX:GA8

GoldArc Resources

goldarcres.com.au

104 Colin Street
West Perth WA 6005

+618 9420 8208

- **Whistler:** Testing a 400m strike extension of the previously undrilled discovery zone.

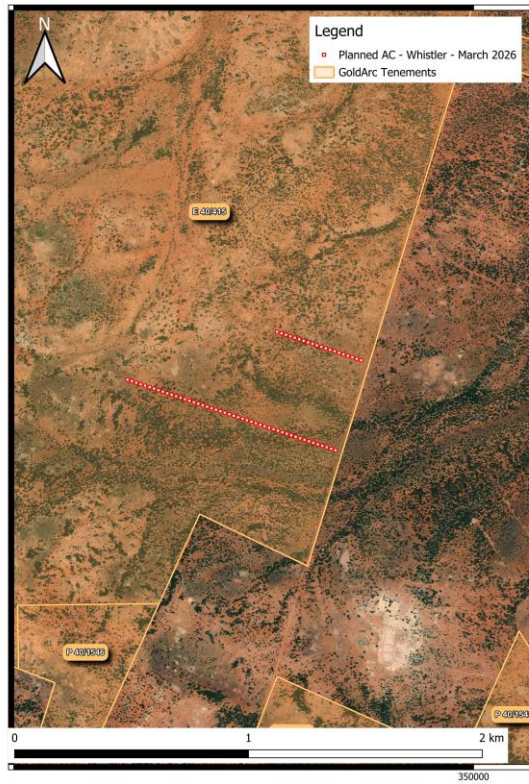


Figure 2 – Whistler Prospects Planned Drilling

- **Altona:** Testing for southern extension of previously identified Au anomalism to the North.



Figure 3 – Altona Prospects Planned Drilling

ASX:GA8

GoldArc Resources

goldarcres.com.au

104 Colin Street
West Perth WA 6005

+61 8 9420 8208



Figure 4 – Raglan AC rig at Whistler.

These programs are central to GoldArc’s strategy. By concurrently running development focused RC drilling alongside discovery focused AC drilling, the Company maintains a balanced pipeline of near-term resource growth and long-term discovery potential.

This announcement has been authorised for release by the Board of Directors.

- ENDS -

Investors

Paul Stephen

Managing Director

GoldArc Resources Limited

info@goldarcres.com.au

Investor Relations

Madeline Howson

Investor Relations

Discover Investor Relations

madeline@discover.com.au

ASX:GA8

GoldArc Resources

goldarcres.com.au

104 Colin Street
West Perth WA 6005

+61 8 9420 8208



Forward-Looking Statements Disclaimer

This announcement contains forward-looking statements. Forward-looking statements are subject to a number of known and unknown risks, uncertainties and other factors that may cause actual results, performance or achievements to differ materially from those expressed or implied. Readers are cautioned not to place undue reliance on forward-looking statements. Except as required by law, the Company assumes no obligation to update such statements.

Competent Person Statement

The information in this announcement that relates to Mineral Resources for the Orion and Sapphire deposits is extracted from the Company's ASX announcement dated 28 May 2024. The information that relates to the Mt Stirling and Stirling Well Mineral Resources is extracted from the Company's ASX announcements dated 25 February 2019, 29 January 2020 and 5 September 2022. The Company confirms that it is not aware of any new information or data that materially affects the information included in those market announcements and, in the case of estimates of Mineral Resources, that all material assumptions and technical parameters underpinning the estimates in those market announcements continue to apply and have not materially changed. The Company confirms that the form and context in which the Competent Person's findings are presented have not been materially modified from the original market announcements.

ASX:GA8

GoldArc Resources

goldarcres.com.au

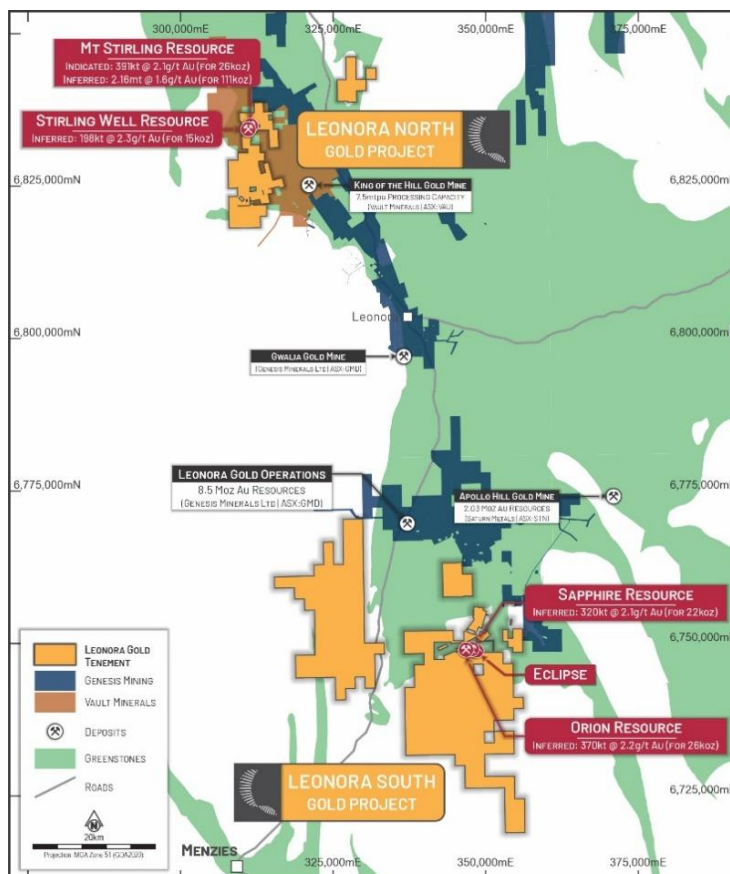
104 Colin Street
West Perth WA 6005

+618 9420 8208



About GoldArc Resources

GoldArc Resources Limited (ASX:GA8) is a Western Australian focused mineral exploration company with a portfolio of highly prospective gold projects located in the world-class Leonora and Kookynie districts of the Eastern Goldfields. GoldArc's strategy is focused on growing its existing 200,000oz JORC resource base and making new, large-scale discoveries through a disciplined and systematic approach to exploration.



GoldArc Resources Total JORC Mineral Resources

GoldArc Gold Projects	Category	Tonnes	Gold Grade (g/t Au)	Gold Ounces
Leonora North - Mt Stirling	Indicated	391,000	2.1	26,000
	Inferred	2,158,000	1.6	111,000
Leonora North - Stirling Well	Inferred	198,000	2.3	15,000
Leonora South - Orion	Inferred	370,000	2.2	26,409
Leonora South - Sapphire	Inferred	320,000	2.1	21,605
Total		3,437,000	1.82	200,014

ASX:GA8

GoldArc Resources

goldarcres.com.au

104 Colin Street
West Perth WA 6005

+61 8 9420 8208