



**Permitted. Funded to FID.  
Targeting Standalone Scale.**

**MiningNews Select Sydney 2026**

9 March 2026



# DISCLAIMER

The following notices and disclaimers apply to this Presentation ("**Presentation**") and you are therefore advised to read this carefully before reading or making any other use of this Presentation or any information contained in this Presentation.

This Presentation is dated 9 March 2026 and has been prepared by the Board and management of Ballard Mining Limited ("**Ballard**" or the "**Company**").

## **SUMMARY INFORMATION ONLY**

The information in this Presentation is summary information only and is current as at the date of this Presentation (unless otherwise indicated), and the information in this Presentation remains subject to change without notice. The information in this Presentation is general in nature and does not purport to be accurate nor complete, nor does it contain all of the information that an investor may require in evaluating a possible investment in Ballard, nor does it contain all the information which would be required in a disclosure document or prospectus prepared in accordance with the requirements of the Corporations Act 2001 (Cth) ("**Corporations Act**") or other legislation. It has been prepared by Ballard with due care but no representation or warranty, express or implied, is provided in relation to the accuracy, reliability, fairness or completeness of the information, opinions or conclusions in this Presentation by Ballard or any other party involved in its preparation, except as required by law.

Reliance should not be placed on information or opinions contained in this Presentation and, Ballard does not have any obligation to finalise, correct or update the contents of this Presentation, except as required by law.

This Presentation should be read in conjunction with Ballard's other periodic and continuous disclosure announcements lodged with the ASX, which are available at [www.asx.com.au](http://www.asx.com.au).

## **FORWARD LOOKING STATEMENTS**

This Presentation may contain forward-looking statements regarding the Company and its subsidiaries (including its projects). Forward-looking statements may in some cases be identified by terminology such as "may", "will", "could", "should", "expect", "plan", "intend", "anticipate", "believe", "estimate", "predict", "potential" or "continue", the negative of such terms or other comparable terminology. These forward-looking statements are only predictions. These forward-looking statements reflect various assumptions by or on behalf of Ballard. Accordingly, these statements are subject to significant business, economic and competitive uncertainties and contingencies associated with the mining industry which may be beyond the control of Ballard which could cause actual results or trends to differ materially including, but not limited to, price and currency fluctuations, geotechnical factors, drilling and production results, development progress, operating results, reserve estimates, legislative, fiscal and regulatory developments, economic and financial market conditions in various countries, approvals and cost estimates, environmental risks, ability to meet funding requirements, share price volatility. Accordingly, there can be no assurance that such statements and projections will be realised.

Actual values, results or events may be materially different to those expressed or implied in this Presentation. Given these uncertainties, recipients are cautioned not to place reliance on forward-looking statements. Any forward-looking statement in this Presentation is given as at the date of this Presentation. Subject to any continuing obligations under applicable law and the ASX Listing Rules, Ballard does not undertake any obligation to update or revise any information or any of the forward-looking statements in this Presentation or any changes in events, conditions or circumstances on which any such forward-looking statement is based.

## **NOT FINANCIAL PRODUCT ADVICE**

This Presentation, and the information provided in it, does not constitute, and is not intended to constitute, financial product or investment advice, financial, legal, tax, accounting or other advice, or a recommendation to acquire any securities of Ballard. It has been prepared without taking into account the objectives, financial or tax situation or particular needs of any individual. Ballard is not licensed to provide financial product advice in respect of an investment in securities or otherwise. Each investor must make its own independent assessment of Ballard before acquiring any securities in the Company.

## **PAST PERFORMANCE**

Any information regarding past performance included in this Presentation is given for illustrative purposes only and should not be relied upon as (and is not) an indication of Ballard's views, or that of any other party involved in its preparation, on Ballard's future performance or condition or prospects.

## **NOT AN OFFER**

This Presentation is not a prospectus, product disclosure statement or other offering document under Australian law or any other law and will not be lodged with the Australian Securities and Investments Commission. This Presentation is for information purposes only and is not an invitation, offer or recommendation with respect to the subscription, purchase or sale of any security in Ballard, or any other financial products or securities, in any place or jurisdiction.

This Presentation has been prepared for publication in Australia and may not be released to US wire services or distributed in the United States. This Presentation does not constitute an offer to sell, or a solicitation of an offer to buy, securities in the United States or any other jurisdiction where it would be illegal. The distribution of this Presentation in the United States and elsewhere outside Australia may be restricted by law. Persons who come into possession of this Presentation should observe any such restrictions as any non-compliance could contravene applicable.

# DISCLAIMER

## NO LIABILITY

The information contained in this Presentation has been prepared in good faith by Ballard. However, no guarantee, representation or warranty expressed or implied is or will be made by any person (such as Ballard or its affiliates, directors, officers, employees, associates, advisers and agents) as to the accuracy, reliability, correctness, completeness or adequacy of any statements, estimates, options, conclusions or other information contained in this Presentation, except as required by law.

To the maximum extent permitted by law, Ballard and its affiliates, directors, officers, employees, associates, advisers and agents each expressly disclaims any and all liability, including, without limitation, any liability arising out of fault or negligence, for any loss arising from the use of or reliance on information contained in this Presentation including representations or warranties or in relation to the accuracy or completeness of the information, statements, opinions, forecasts, reports or other matters, express or implied, contained in, arising out of or derived from, or for omissions from, this Presentation including, without limitation, any financial information, production targets, financial forecasts, estimates or projections and any other information derived therefrom. Statements in this Presentation are made only as of the date of this Presentation unless otherwise stated and the information in this Presentation remains subject to change without notice. No responsibility or liability is assumed by Ballard or any of its affiliates, directors, officers, employees, associates, advisers or agents for updating information in this Presentation or to inform any recipient of any new or more accurate information or any errors or omissions of which Ballard or any of its affiliates, directors, officers, employees, associates, advisers or agents may become aware, except as required by law.

## INVESTMENT RISK

An investment in Ballard is subject to investment and other known and unknown risks, some of which are beyond the control of Ballard. Those risks and uncertainties include factors and risks specific to Ballard such as (without limitation) the status of exploration and mining tenements and applications and the risks associated with the non-grant or expiry of those tenements and applications, liquidity risk, risks associated with the exploration or developmental stage of projects, funding risks, operational risks, changes to government fiscal, monetary and regulatory policies, the impact of actions of governments, the potential difficulties in enforcing agreements and protecting assets, alterations to resource estimates and the imprecise nature of resource and reserve statements, any circumstances adversely affecting areas in which Ballard operates, fluctuations in the production, volume and price of commodities, any imposition of significant obligations under environmental regulations, fluctuations in exchange rates, the fluctuating industry and commodity cycles, the impact of inflation on operating and development costs, taxation, regulatory issues and changes in law and accounting policies, the adverse impact of wars, terrorism, political, economic or natural disasters, the impact of changes to interest rates, loss of key personnel and delays in obtaining or inability to obtain any necessary government and regulatory approvals, insurance and occupational health and safety. Further information regarding the risks associated with an investment in Ballard are disclosed in Ballard's IPO Prospectus lodged with the Australian Securities and Investment Commission ("ASIC") and dated 30 May 2025 (as amended by the Supplementary Prospectus lodged with ASIC and dated 17 June 2025) ("**IPO Prospectus**"). Ballard does not guarantee any particular rate of return or the performance of Ballard, nor does it guarantee the repayment of capital from Ballard or any particular tax treatment.

## MINERAL RESOURCE ESTIMATE (MRE)

Information in this Presentation that relates to exploration results, the data and geological interpretation used as the basis of the mineral resources was reported by Ballard on the 26 February 2026 and for which the consent of the Competent Person Mr Todd Hibberd was obtained. Ballard confirms it is not aware of any new information or data that materially affects the information included in the 26 February 2026 announcement.

Information in this Presentation that relates to the gold mineral resource estimate at the Mt Ida Project was reported by Ballard on the 26 February 2026, and for which the consent of the Competent Person Mr Michael Andrew was obtained. Ballard confirms it is not aware of any new information or data that materially affects the information included in the 26 February 2026 announcement and that all material assumptions and technical parameters underpinning the mineral resource estimate continue to apply and have not materially changed.

Past Exploration results and Mineral Resource Estimates reported in this announcement have been previously prepared and disclosed by Ballard in the IPO Prospectus.

## JORC CODE DIFFERS FROM REPORTING REQUIREMENTS IN OTHER COUNTRIES

It is a requirement of the ASX Listing Rules that the reporting of ore reserves and mineral resources in Australia comply with the JORC Code. Investors outside Australia should note that while ore reserve and mineral resource estimates of the Company in this presentation comply with the JORC Code, they may not comply with the relevant guidelines in other countries and, in particular, do not comply with (i) National Instrument 43-101 (Standards of Disclosure for Mineral Projects) of the Canadian Securities Administrators or (ii) Item 1300 of Regulation S-K, which governs disclosure of mineral reserves in registration statements filed with the US Securities and Exchange Commission. Information contained in this Presentation describing mineral deposits may not be comparable to similar information made public by companies subject to the reporting and disclosure requirements of other countries. You should not assume that quantities reported as "resources" in this Presentation will be converted to reserves under the JORC Code or any other reporting regime or that the Company will be able to legally and economically extract them.

## FINANCIAL INFORMATION

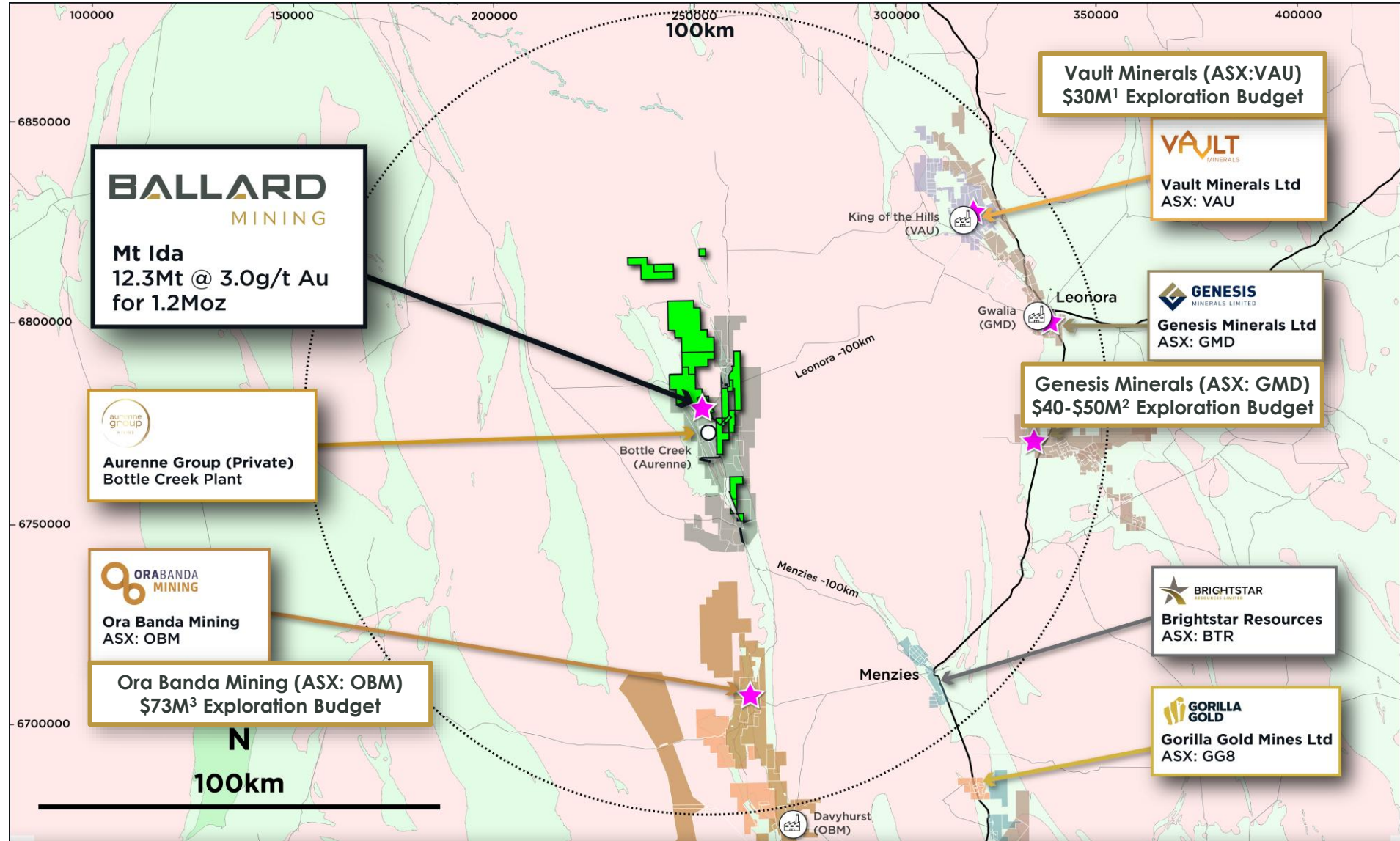
All dollar amounts are in Australian dollars unless otherwise indicated.

## EFFECT OF ROUNDING

The figures in this Presentation may be subject to rounding. Accordingly, the actual calculation of these figures may differ from the figures set out in this presentation.

# “PLAN A” - TARGETING STANDALONE SCALE.

\$50M Exploration Budget for CY2026. 220,000m drill program planned



## LEGEND

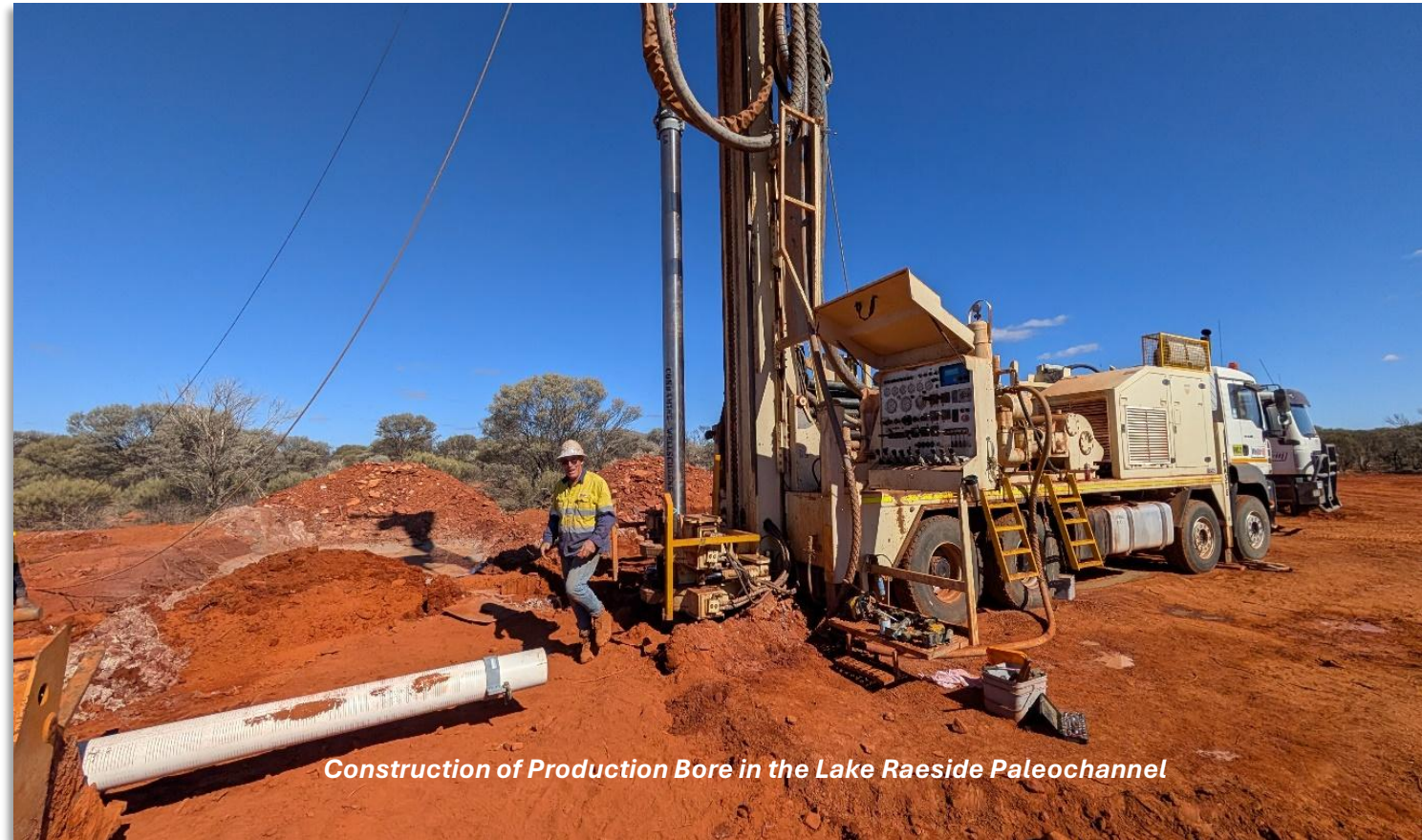
- Gold Plant (ASX Companies)
- Ballard Mining
- Genesis Minerals Ltd (GMD)
- Vault Minerals Ltd (VAU)
- Brightstar Resources (BTR)
- Ora Banda Ltd (OBM)
- Gorilla Gold Mines Ltd (GG8)
- Aurene Group (Private)
- Gold Plant

1. Refer to the ASX Announcement lodged by Vault (ASX:VAU) on the 22<sup>nd</sup> September 2025 “FY26 guidance and three year outlook” for more information regarding Vault FY26 Exploration budget  
 2. Refer to the ASX Announcement lodged by Genesis (ASX:GMD) on the 21<sup>st</sup> August 2025 “FY25 results and outlook” for further information regarding Genesis FY26 Exploration budget  
 3. Refer to the ASX Announcement lodged by Ora Banda (ASX:OBM) on the 19<sup>th</sup> November 2025 “AGM Presentation” for further information regarding Ora Banda FY26 Exploration budget

# FULLY PERMITTED.

Fundamental differentiator from other gold developers

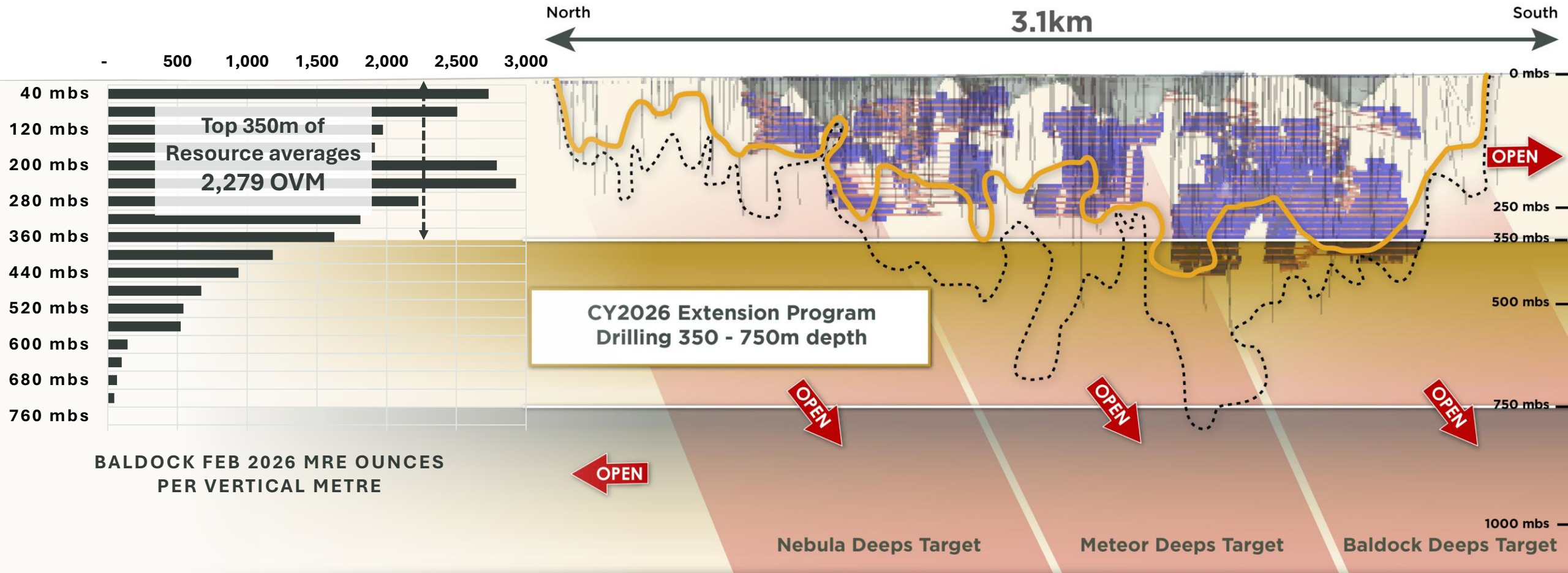
- **Granted Mining Leases**
- **Approved Mining Proposal and Mine Closure Plan for Open Pit and Underground Mining at Baldock**
- **Works Approval granted for 2.0 Mtpa Process Plant and TSF**
- **Approved Native Vegetation Clearing Permit**
- **3.7 GL/yr groundwater license (GWL)**
  - 3.7 GL/yr supports ~3.7 Mtpa Processing
  - 3 x production bores installed



*Construction of Production Bore in the Lake Raeside Paleochannel*

# LEVERAGE OFF DE-RISKED & FULLY PERMITTED BALDOCK

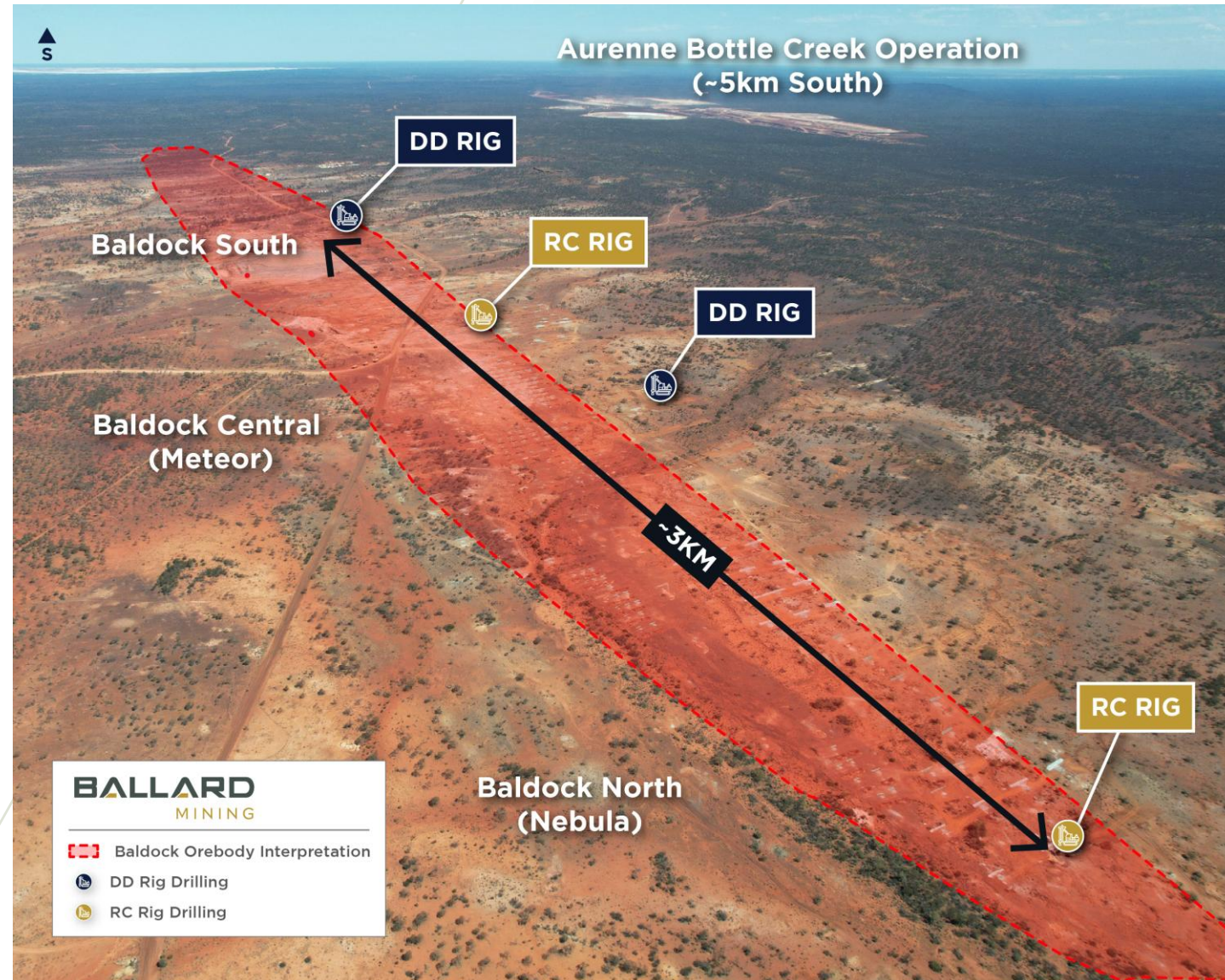
1Moz Resource. Includes Indicated Resource Category of 669koz @ 3.7g/t<sup>1</sup>



# OROGENIC GOLD DEPOSITS PLUMB DEEP

*Five (5) drill rigs currently operating at Baldock: 2 RC (Pre-collars) + 3 Diamond*

- Mt Ida considered **analogous to the +10Moz Agnew gold camp** (~150km north) by renowned Structural Geologist Dr Sarah Jones
- **Orogenic orebodies** typically “**plumb deep**”
  - Agnew **1.4km deep**<sup>1</sup> mine ~150km north
  - Ora Banda Riverina Deeps +**1km<sup>2</sup> deep** mineralized system. ~80km south
- **Agnew and Ora Banda are located on same greenstone belt**



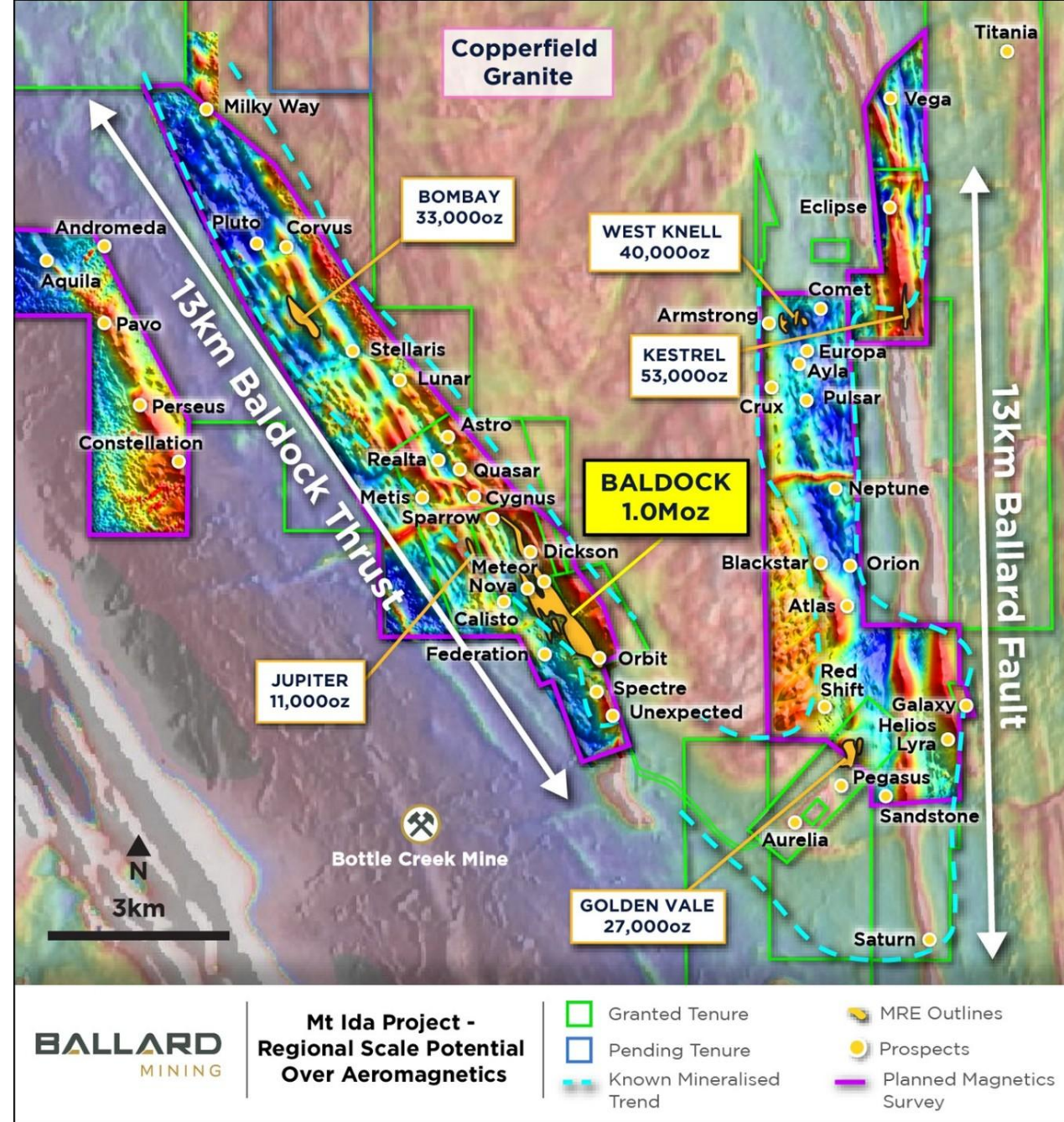
1. Reference Gold Fields Analyst and Investor Site Visit 2022.

2. Refer to the ASX Announcement lodged by Ora Banda (ASX:OBM) on the 23rd October 2025 “Outstanding Drill Results at Little Gem and Riverina” for further information regarding the depth of the mineralization system at Riverina Deeps.

# 53 REGIONAL PROSPECTS

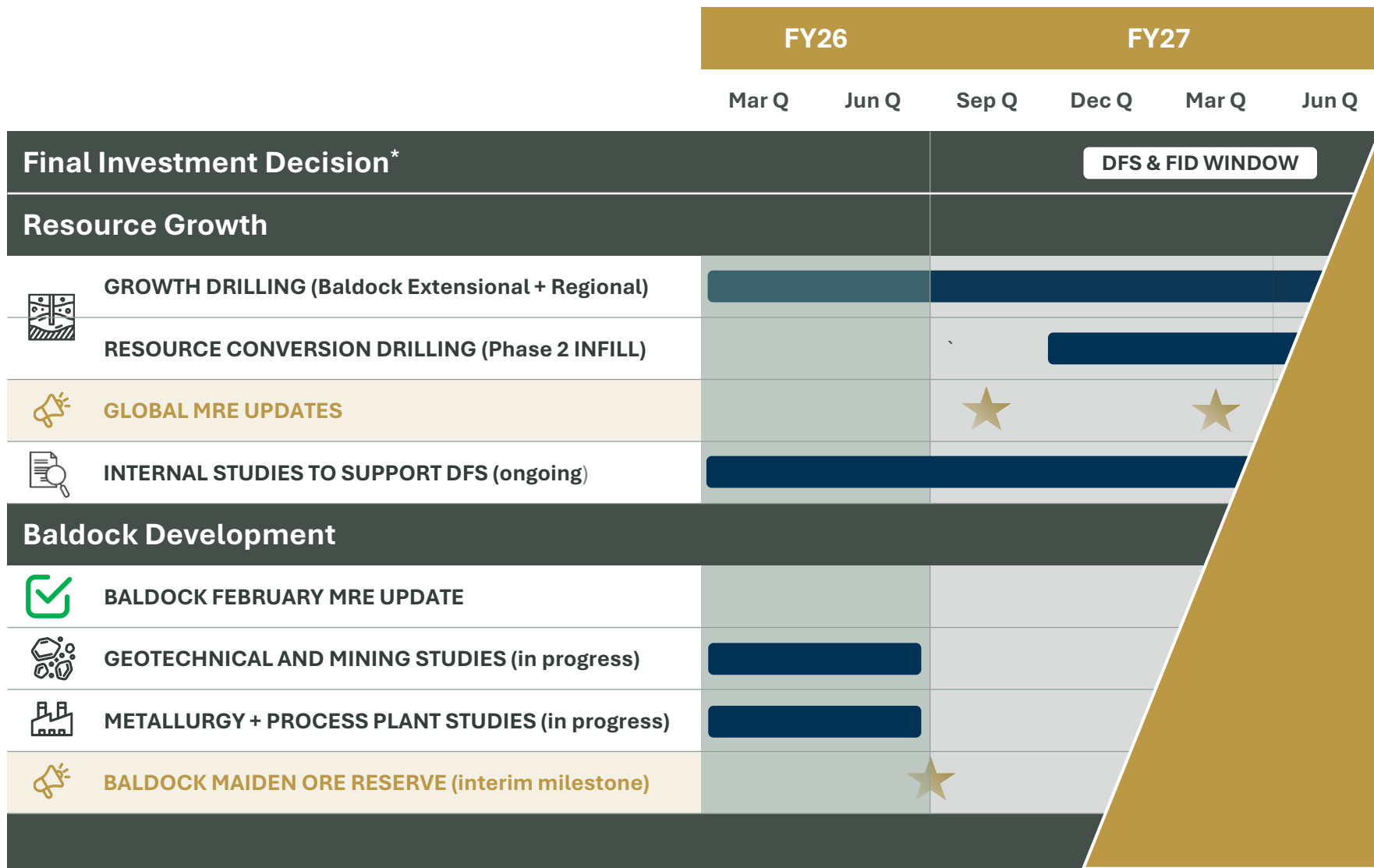
## Swallow the Elephant one bite at a time

- Initially targeting growth at existing “**Satellite Resources**”
  - Provide additional production uplift to baseload feed from Baldock
  - Expected to be (initial) open pits which also provide oxide/transitional blending source
  - Early data collection for met, geotech, permitting
- Planned Exploration workstreams:
  - Geochemical review of existing and new datasets
  - Geophysics (down hole and surface) to inform deeper drilling
  - Systematic drilling throughout all of CY2026**



# Top-down goal of 100koz pa over initial 8 – 10 Years

This is how we get there:



**Top-down Goal: 100kozpa for 8-10 years**  
**MRE of 1.5 - 2.0 Moz will support this**  
 Entire Ballard workforce incentivised with this MRE target

**220,000m drill program in CY2026 targeting:**

- Additional mine life to Baldock**
- Production uplift to Baldock from regional prospects (satellite deposits)**

Baldock does the “heavy lifting”. Provides base load feed for the Project  
 Indicated Resource of **669koz at 3.7g/t** is expected to provide a Reserve base for first 5-6 Years




# CORPORATE SUMMARY

## January \$61M Placement: De-risked Balance Sheet and Future Proofed Register

### Corporate Structure

Shares on Issue	454 Million
Performance Rights & Options	22 Million
Share Price (5 day VWAP to 6/3/26)	\$0.88
Market Capitalisation	~\$400 Million
Proforma Cash on hand (31 Dec 2025)	~\$85 Million

### Ownership Structure

	%	
Delta (2 Year ASX imposed escrow) <sup>1</sup>	34.4%	
Aurenne Group	9.6%	
Hancock Prospecting <sup>2</sup>	5.9%	
Board and Management (Fully Diluted)	4.6%	

### Board & Key Management Personnel (previous roles)

Chair	Simon Lill (De Grey)
Managing Director	Paul Brennan (Saracen, Calidus)
Executive Director	Tim Manners (Ramelius, Gold Road)
Non-Executive Director	James Croser (Spectrum, Delta)
Non-Executive Director	Stuart Mathews (Gold Fields)
Company Secretary	Loren Falconer (MACA, PLS)
Geology Manager	Todd Hibberd (Newmont)



# INVESTMENT HIGHLIGHTS

Fully Permitted. Funded to FID. Targeting standalone scale



**LOCATION** → Heart of the WA Eastern Goldfields with +15Mtpa Processing Capacity and deep orebodies proximal



**MINERAL RESOURCE ESTIMATE** → 1.2Moz, including 1Moz at Baldock. Expect high Reserve conversion from Baldock Indicated portion



**TARGETING STANDALONE SCALE** → Initial Baldock Ore Reserve + CY2026 drilling success to deliver growth



**FULLY PERMITTED.**



**MULTIPLE UPCOMING CATALYSTS** → Maiden Ore Reserve, Ongoing drilling results, MRE Updates





# Appendix A Mineral Resource Estimate

# A MINERAL RESOURCE ESTIMATE – FEBRUARY 2026<sup>1</sup>

Cut off	Deposit	Indicated			Inferred			Total		
		Tonnes (000s)	Grade g/t Au	Ounces (000s)	Tonnes (000s)	Grade g/t Au	Ounces (000s)	Tonnes (000s)	Grade g/t Au	Ounces (000s)
Open cut Au 0.5 g/t	Baldock	2,916	3.9	362	395	2.6	33	3,311	3.7	395
	Kestrel				940	1.6	48	940	1.6	48
	Golden Vale				496	1.7	27	496	1.7	27
	Bombay				711	1.3	30	711	1.3	30
	West Knell				238	3.3	25	238	3.3	25
	Jupiter				50	1.7	3	50	1.7	3
	Mt Ida Tailings				500	0.5	8	500	0.5	8
Underground Au 1.5 g/t	Baldock	2,684	3.6	307	2,992	3.2	304	5,651	3.4	610
	Kestrel				80	1.8	5	80	1.8	5
	Bombay				30	3.0	3	30	3.0	3
	West Knell				192	2.4	15	192	2.4	15
	Jupiter				90	2.7	8	90	2.7	8
All	Baldock	5,574	3.7	669	3,388	3.1	337	8,962	3.5	1,006
	Kestrel				1,000	1.7	53	1,000	1.7	53
	Golden Vale				496	1.7	27	496	1.7	27
	Bombay				740	1.4	33	740	1.4	33
	West Knell				420	2.9	40	420	2.9	40
	Jupiter				140	2.3	11	140	2.3	11
	Mt Ida Tailings				500	0.5	8	500	0.5	8
	<b>Total</b>		<b>5,574</b>	<b>3.7</b>	<b>669</b>	<b>6,684</b>	<b>2.4</b>	<b>509</b>	<b>12,258</b>	<b>3.0</b>