

9 March 2026

Follow up Geophysical Surveying at Pinnacle Well Underway

- Infill pole-dipole IP surveying commenced at Pyrophyllite Hill
- Survey designed to refine previously identified strong chargeable feature and assist drillhole targeting

Legend Mining Limited (Legend) is pleased to report follow up low impact pole dipole induced polarisation (PDIP) surveying has commenced at the Pyrophyllite Hill prospect at its Pinnacle Well Project (Project), located 25 km NNE of Leonora, Western Australia (see Figures 2 & 3).

Surveying undertaken at Pyrophyllite Hill in February 2026 identified a strong coincident chargeable and resistive feature on Line 1 (see Figure 1 below) that is interpreted to represent sulphides between 75-300m depth (see ASX announcement 16 February 2026). Two further lines of PDIP are planned to better define this feature and assist with drillhole design, with results expected in approximately four weeks (see Figure 1).

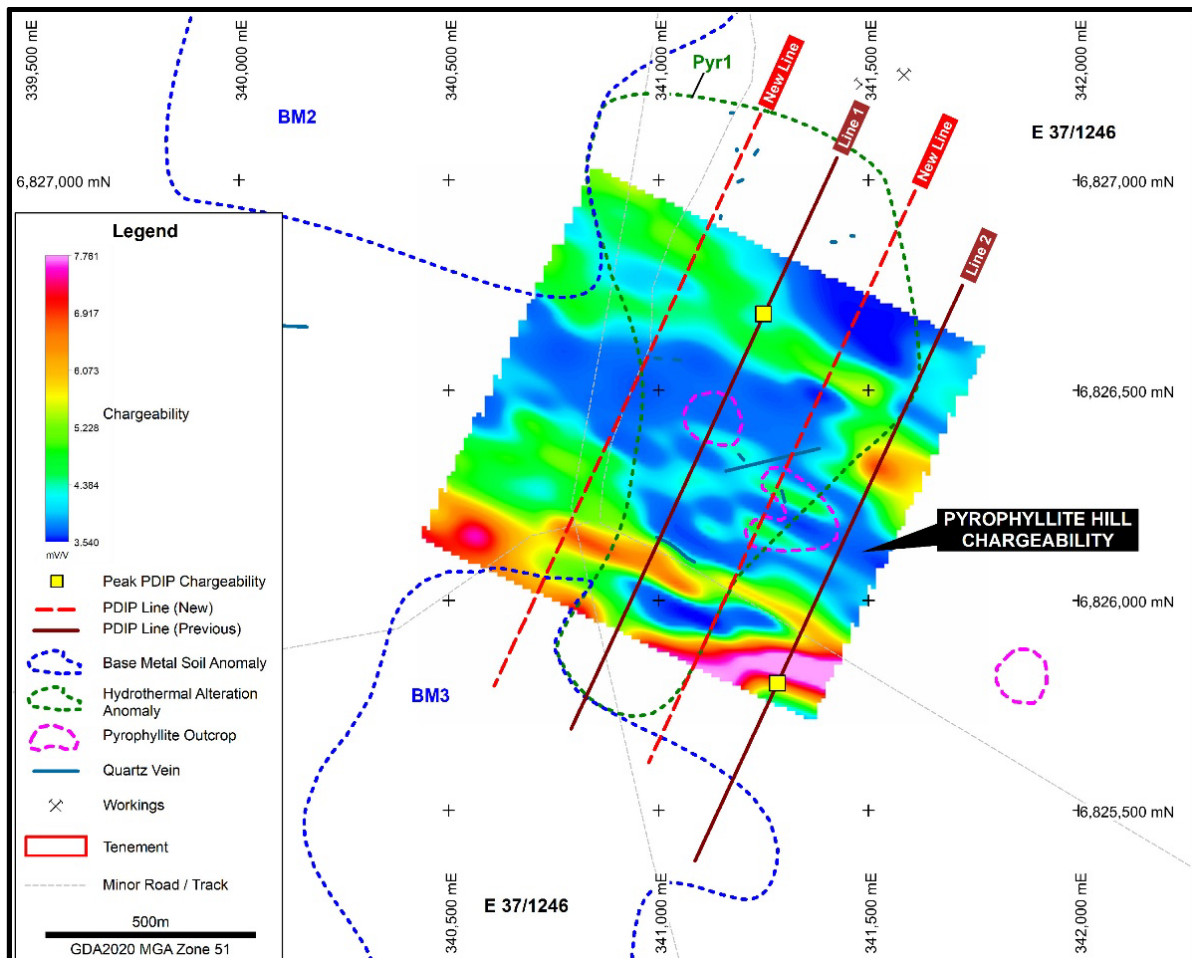


Figure 1: Pyrophyllite Hill GAIP survey chargeability image with completed and planned PDIP lines, main pyrophyllite outcrop and Pyr1 UFF soil anomaly

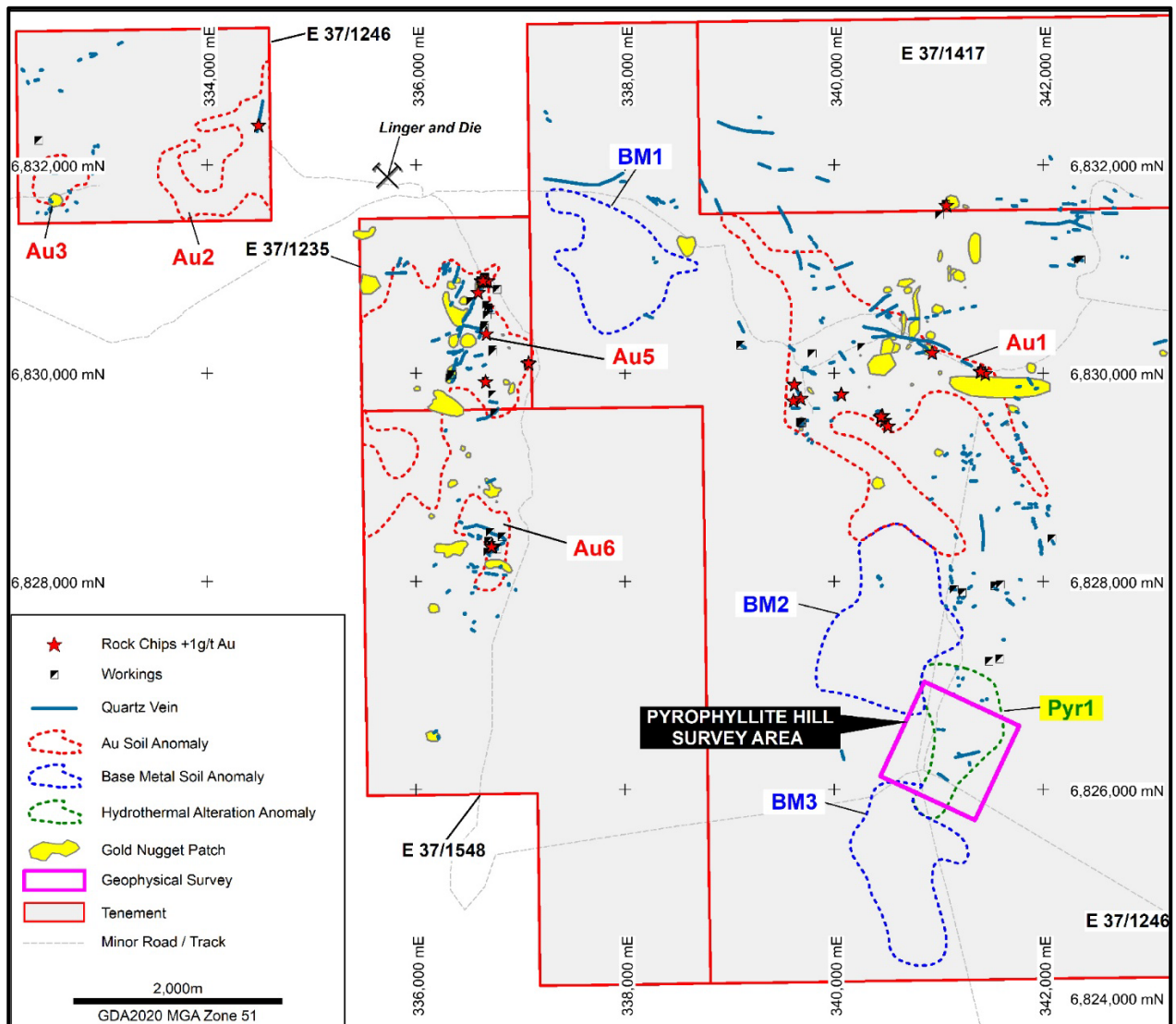


Figure 2: Pinnacle Well Project – Pyrophyllite Hill survey area with respect to UFF soil anomalies

BACKGROUND

Legend acquired a 100% interest in exploration licences E37/1246 and E37/1548 on 2 July 2025 and E37/1235 and E37/1417 on 5 November 2025. Legend also obtained a “Right of First Refusal” (ROFR) over seven adjacent “Linger and Die Group” tenements (E37/1234, P37/8573, P37/9675, P37/9676, P37/9752, M37/1385, M37/1400). Full transaction details are provided in ASX announcements 2 July 2025 and 5 November 2025.

The Project covers a combined area of 128km² and is located approximately 25km NNE of Leonora in the northern goldfields of Western Australia. The Pinnacle Well Project is considered prospective for gold and base metals as the region is host to a number of significant gold deposits including Gwalia and King of the Hills, in addition to base metal deposits at Bentley and Jaguar (see Figure 3).

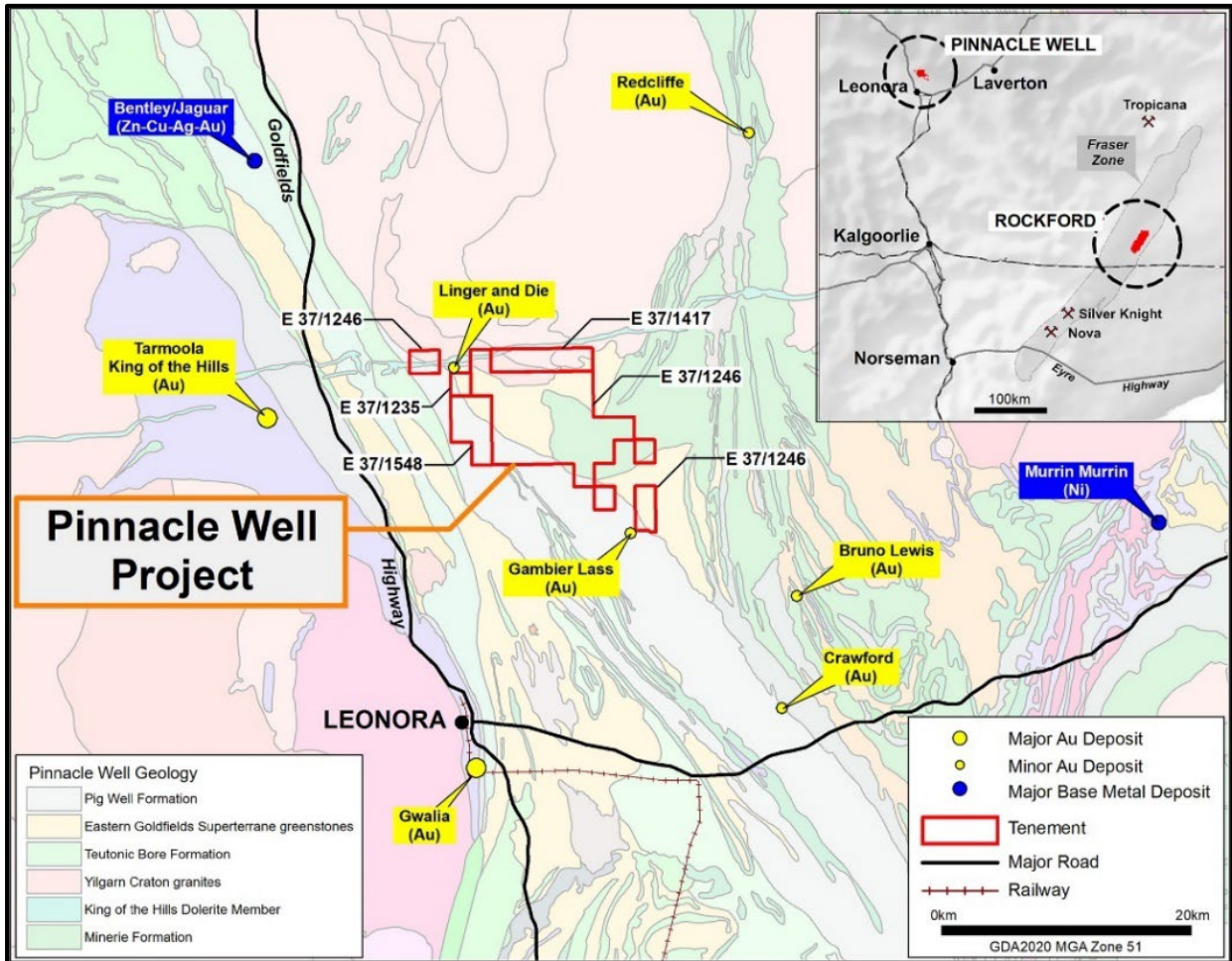


Figure 3: Pinnacle Well Project Location with Major Mines/Deposits on Regional Geology (GSWA 1:500K)

Authorised by Mark Wilson, Executive Chair.

Competent Person Statement

The information in this report that relates to Exploration Results is based on information compiled by Mr Derek Waterfield. Mr Waterfield is a Member of the Australian Institute of Geoscientists and a full time employee of Legend Mining Limited. Mr Waterfield has sufficient experience that is relevant to the styles of mineralisation and types of deposit under consideration, and to the activity being undertaken, to qualify as a Competent Person as defined in the 2012 Edition of the “Australasian Code for Reporting of Exploration Results, Mineral Resources and Ore Reserves” (JORC Code). Mr Waterfield consents to the inclusion in the report of the matters based on his information in the form and context in which it appears.

The information in this report that relates to Legend’s Exploration Results is a compilation of previously released to ASX by Legend Mining (16 February 2026). Mr Waterfield consents to the inclusion of these Results in this report. Mr Waterfield has advised that this consent remains in place for subsequent releases by Legend of the same information in the same form and context, until the consent is withdrawn or replaced by a subsequent report and accompanying consent. Legend confirms that it is not aware of any new information or data that materially affects the information included in the original market announcements and that all material assumptions and technical parameters in the market announcements continue to apply and have not materially changed. Legend confirms that the form and context in which the Competent Person’s findings are presented have not been materially modified from the original market announcements.

Forward Looking Statements

This announcement contains “forward-looking statements” within the meaning of securities laws of applicable jurisdictions. Forward-looking statements can generally be identified by the use of forward-looking words such as “may”, “will”, “expect”, “intend”, “plan”, “estimate”, “anticipate”, “believe”, “continue”, “objectives”, “outlook”, “guidance” or other similar words, and include statements regarding certain plans, strategies and objectives of management and expected financial performance. Forward-looking statements are provided as a general guide only and should not be relied upon as an indication or guarantee of future performance. These forward-looking statements are based upon a number of estimates, assumptions and expectations that, while considered to be reasonable by Legend Mining Limited, are inherently subject to significant uncertainties and contingencies, involve known and unknown risks, uncertainties and other factors, many of which are outside the control of Legend Mining Limited and any of its officers, employees, agents or associates.

Actual results, performance or achievements may vary materially from any projections and forward-looking statements and the assumptions on which those statements are based. Exploration potential is conceptual in nature, to date there has been insufficient exploration to define a Mineral Resource and it is uncertain if further exploration will result in the determination of a Mineral Resource. Readers are cautioned not to place undue reliance on forward-looking statements and Legend Mining Limited assumes no obligation to update such information made in this announcement, to reflect the circumstances or events after the date of this announcement.

Visit www.legendmining.com.au for further information and announcements.

For more information contact:

Mr Mark Wilson
Executive Chair
Ph: +61 8 9212 0600

Mr Tony Walsh
Director/Company Secretary
Ph: +61 8 9212 0600