

Q2FY26 Investor Update

> Jcurve Solutions Limited (ASX: JCS)

Chris King

CEO

5th February 2025



This presentation has been authorised for release by the Board of Jcurve Solutions Limited.

Disclaimer

The information outlined in this investor presentation ("Presentation") has been prepared by Jcurve Solutions Limited ("the Company") and is delivered for informational purposes only.

The Company has prepared the Presentation Materials based on information available to it at the time of preparation. No attempt has been made to independently verify the information contained in this Presentation. The Presentation does not purport to contain all information that a prospective investor may require. While the information contained herein has been prepared in good faith, neither the Company nor its shareholders, directors, officers, agents, employees, or advisors give, has given or has the authority to give, any representations or warranties (express or implied) as to, or in relation to, the accuracy, reliability or completeness of the information in this Presentation, or any revision thereof, or of any other written or oral information made or to be made available to any interested party or its advisors (all such information being referred to as "information") and liability therefore is expressly disclaimed.

Accordingly, neither the Company nor any of its shareholders, directors, officers, agents, employees or advisors take any responsibility for, or will accept any liability whether direct or indirect, express or implied, contractual, tortious, statutory or otherwise, in respect of the accuracy or completeness of the information or for any of the opinions contained herein or for any errors, omissions or misstatements or for any loss howsoever arising from the use of this Presentation.

In furnishing this Presentation, the Company does not undertake or agree to any obligation to provide the recipient with access to any additional information or to update this Presentation or to correct any inaccuracies in, or omissions from, this Presentation which may become apparent.

This Presentation should not be considered as the giving of investment advice or recommendations by the Company or any of its shareholders, directors, officers, agents, employees or advisors. Each party to whom this Presentation is made available must make its own independent assessment of the Company after making such investigations and taking such advice as may be deemed necessary. In particular, estimates or projections or opinions contained herein necessarily involve significant elements of subjective judgement, analysis and assumption and each recipient should satisfy itself in relation to such matters.

This Presentation may contain "forward looking statements". Where the Company expresses or implies an extension or belief as to future events or results such expectation or belief is expressed in good faith and believed to have reasonable basis. However, "forward looking statements" are subject to risks, uncertainties and other factors, which could cause actual results to differ materially from future results expressed, projected or implied by such "forward looking statements". The Company does not undertake any obligation to release publicly any revisions to any "forward looking statement" to reflect events or circumstances after the date of this Presentation or to reflect the occurrence of unanticipated events, except as may be required under applicable laws.

All forward-looking statements, forecasts and projections contained in this Presentation are qualified by the foregoing cautionary statements. Recipients are cautioned that forward looking statements are not guarantees of future performance and accordingly recipients are cautioned not to put undue reliance on forward looking statements due to the inherent uncertainty therein.

Agenda

Q2FY26 Business Update

Our Next Horizon(s)

Full Year Guidance



Q2FY26

Business
Update



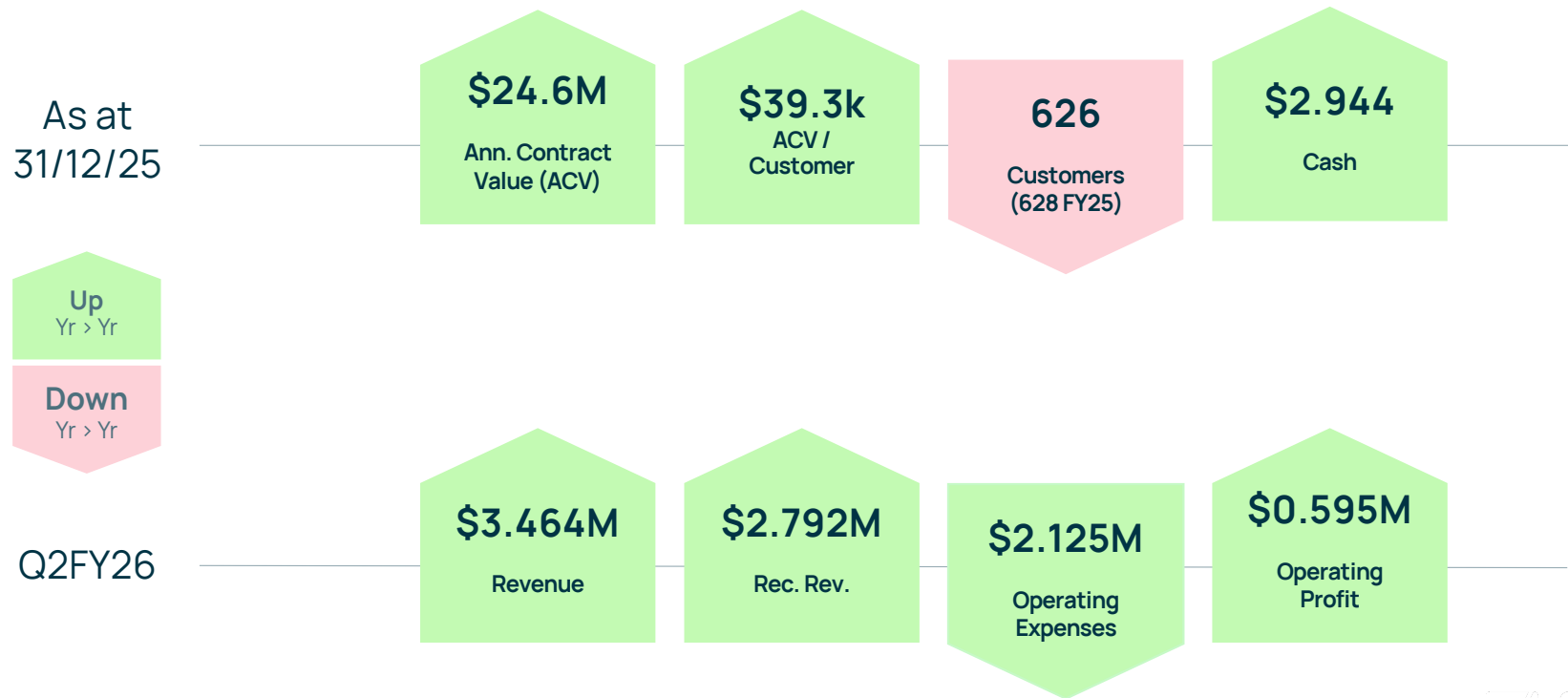
Q2FY26 Business Update

Focusing on the trading performance for the quarter, Jcurve delivered a strong Q2FY26 (unaudited) with the following key results;

- Cash sales of \$2,947M including a 50% year-on-year increase in renewal sales contributing to an improvement in our margins and cash balance
- Total ARR of \$2.792M, including Jcurve Annual Recurring Revenue (JARR) of \$1.543 which exceeded our Reseller Annual Recurring Revenue (RARR) of \$1.249 delivering stronger margins, more diverse and resilient revenue mix and improved shareholder value.
- Operating profit (EBITDA) was up from a loss of -\$0.269M in Q2FY25 to a profit of \$0.641M for Q2FY26.
- The Company ended the quarter with a cash balance of \$2.944M as of 31 December 2025, maintaining a solid financial position and resources to support our next growth horizon.
- 14 New customers added during the Quarter. 14% of our next horizon objective of 100 new customers.

Another strong quarter delivering improvements in our cash position and materially significant year on year improvements in gross margins and operating profit.

Q2FY26 Financial Results



Q2FY26 Key Performance Indicators

Measure	2QFY26	1QFY26	4QFY25	3QFY25	2QFY25
Annual Contract Value (ACV \$M's) [1]	\$ 24.623	\$ 25.101	\$ 24.432	\$ 23.415	\$ 22.538
Number of Customers	626	628	624	632	628
ACV / Customer	\$ 39,334	\$ 39.970	\$ 39.154	\$ 37.049	\$ 35.889
Jcurve Recurring Revenue JARR from ACV (\$M's) [2]	\$ 1.543	\$ 1.543	n/a	n/a	n/a
Reseller Recurring Revenue RARR from ACV (\$M's) [3]	\$ 1.250	\$ 1.346	n/a	n/a	n/a
Annualised Recurring Revenue ARR from ACV (\$M's)	\$ 2.793	\$ 2.889	\$ 2.460	\$ 2.166	\$ 1.758
Annualised Recurring Revenue from ACV (%) [4]	45%	46%	40%	37%	31%
Services and Other Revenue \$M's	\$ 0.671	\$ 0.644	\$ 0.586	\$ 0.644	\$ 0.481
Number of Customers Acquired	14	14	13	16	7
Number of Customers Cancelled	16	10	21	12	13
EBITDAR \$M's [5]	\$ 0.595	\$ 0.654	\$ 0.011	\$ 0.401	-\$ 0.201
Cash & cash equivalents \$M's	\$ 2.944	\$ 2.499	\$ 1.368	\$ 0.321	\$ 0.377

[1] Customer contract value for direct and reseller contracts

[2] Jcurve Annualised Recurring Revenue generated from customer contracts

[3] Reseller Annualised Recurring Revenue generated from customer contracts

[4] $ARR / (ACV / 4)$ for quarterly calculation

[5] $EDITDAR = EBITDA + IFRS \text{ rent paid to landlords}$

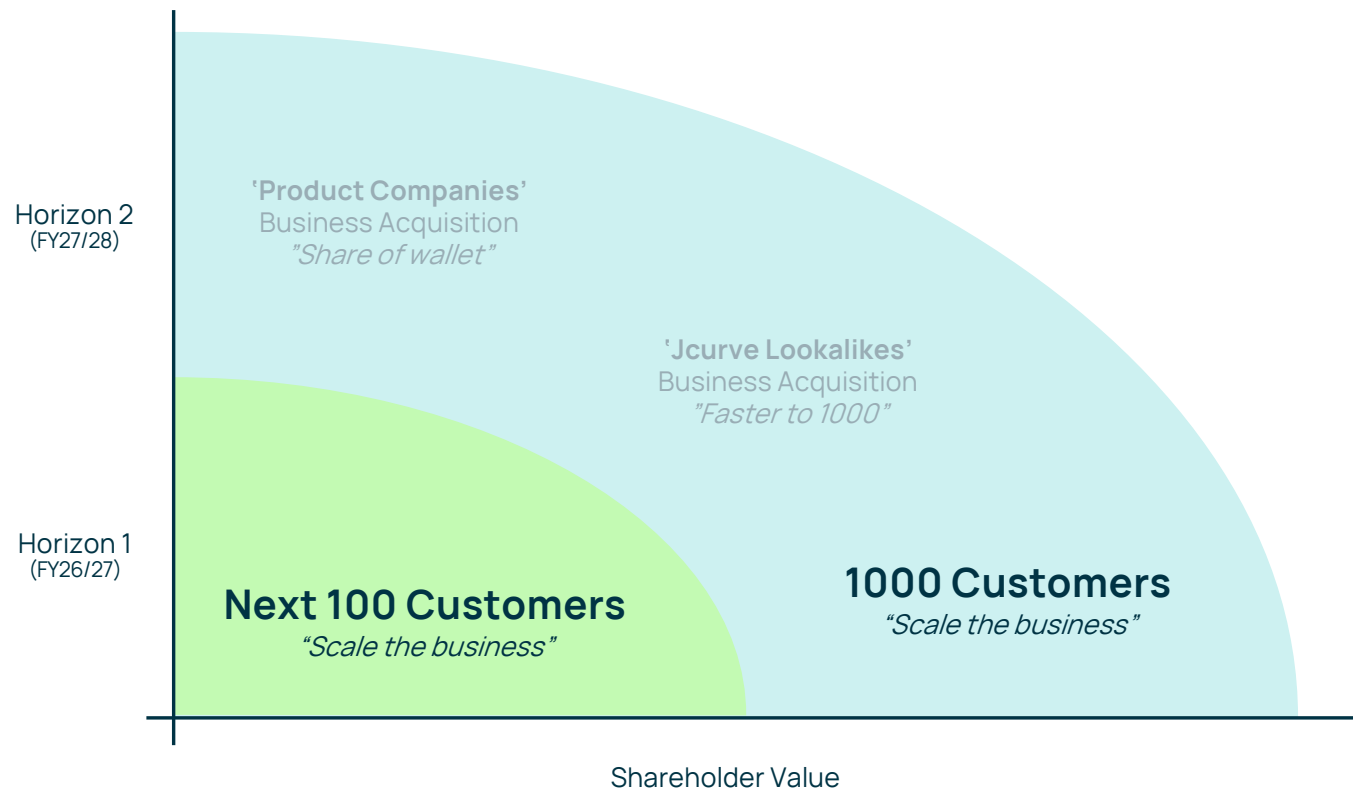
Q2FY26 Driven by our Performance Culture

We have introduced across every department a results-based culture focused on business performance and outcomes. Our headline results are achieved by every team member contributing to our success and focusing on the things that matter. Below are just some of the KPI's that we have delivered against, and which are directly attributable to our recent successes. We believe that this culture differentiates us in the market.

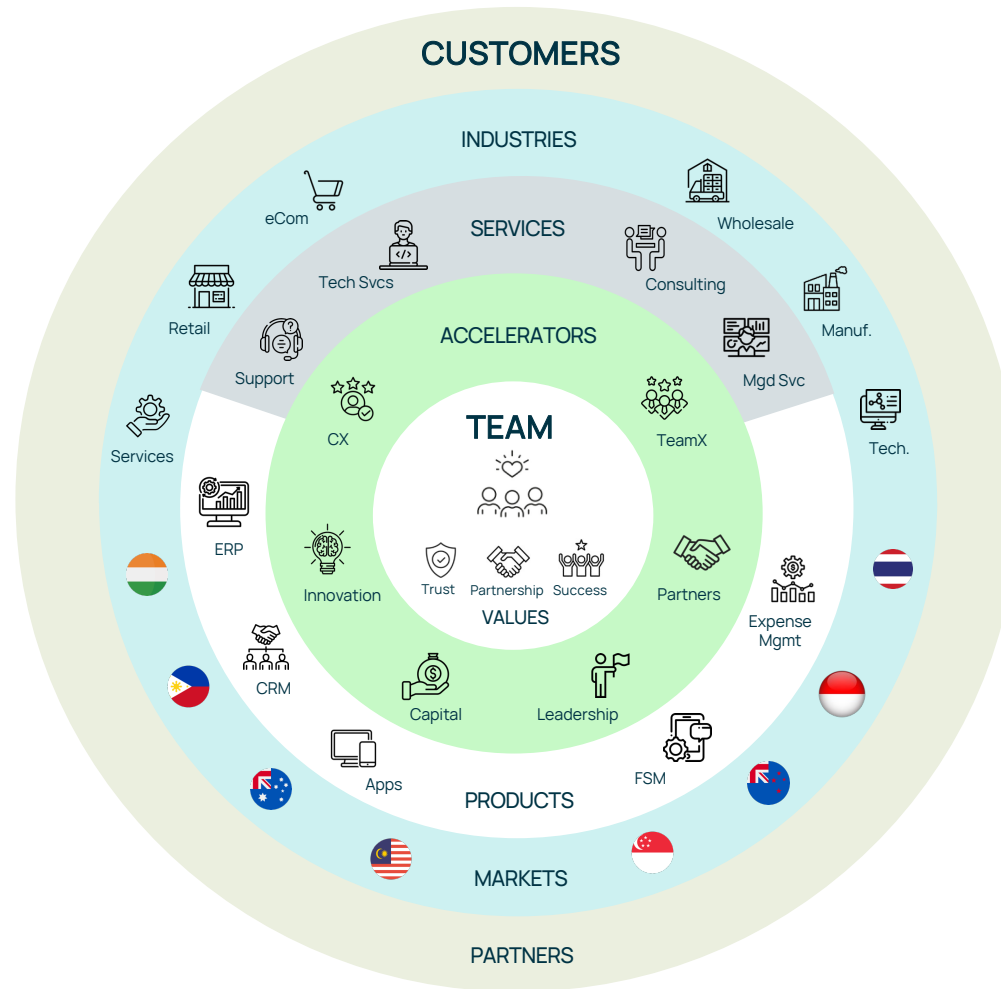


Our Next Horizon(s)

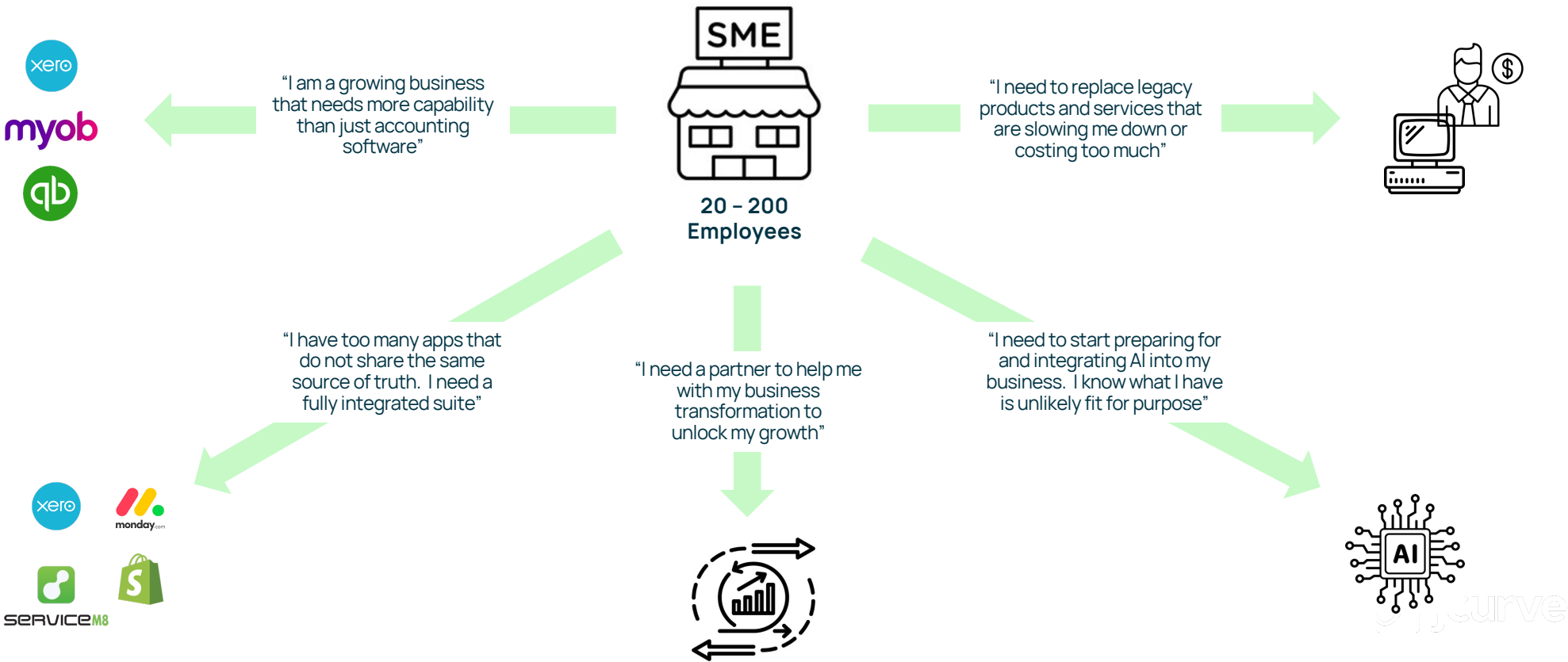
Delivering on Our Next Horizons



Strategy



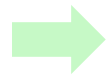
What PROBLEMS do we solve?



What do our Customers NEED?



Upgrade my Accounting to ERP



Simple, Fast & Affordable

Help me move off my legacy systems and services



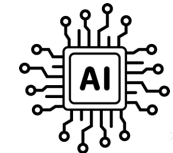
Consolidate my Cloud Apps



A partner that Understands my journey



Help me Execute my AI Strategy



Jcurve

Unlocking our Customers' Potential

Affordability



BARRIERS to Purchase

- ✗ Cost perception
- ✗ "Good enough" syndrome
- ✗ Fear of disruption
- ✗ Lack of internal expertise
- ✗ Complexity



'&'



AI



Business DRIVERS

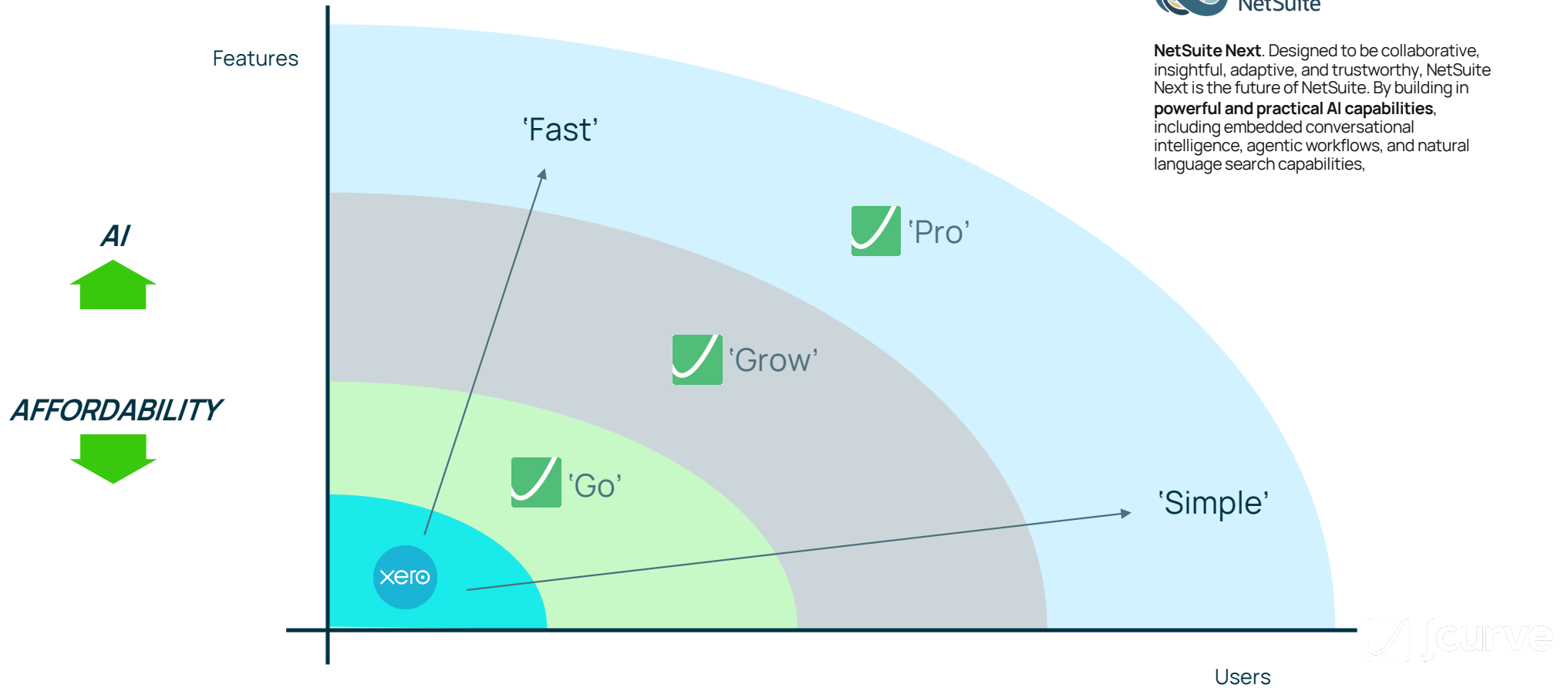
- ✓ Outgrowing disconnected systems
- ✓ Inventory and supply chain pain
- ✓ Reporting and visibility gaps
- ✓ Scaling operations
- ✓ Compliance and audit requirements

Introducing Jcurve 'Next'

Powered by Oracle NetSuite 'Next'



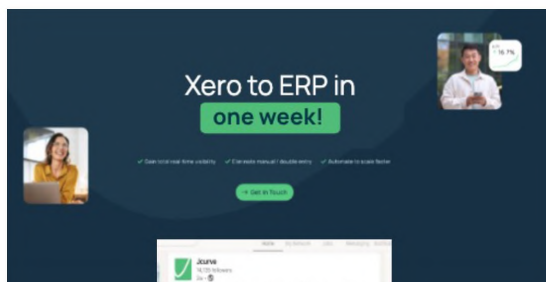
NetSuite Next. Designed to be collaborative, insightful, adaptive, and trustworthy, NetSuite Next is the future of NetSuite. By building in **powerful and practical AI capabilities**, including embedded conversational intelligence, agentic workflows, and natural language search capabilities,



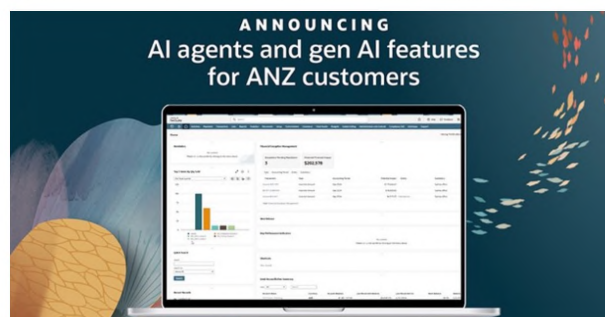
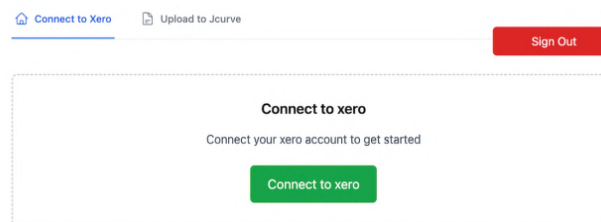
Jcurve 'Next'

Simple, Fast & Affordable

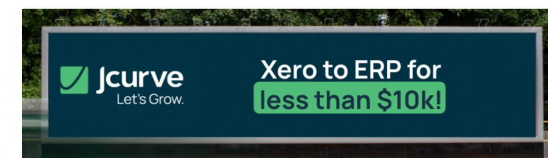
Reinvent the Category



Innovate & Automate



Make it Affordable



Free Data Migration

FY26

Full Year
Guidance



Jcurve FY26 Full Year Guidance



Revenue for FY26 is forecast to be between **\$13 million and \$13.35 million**, representing an increase of 14% to 17% compared to FY25's \$11.423 million.



Cash flow for 2HFY26 period is expected to be **positive**.



As we accelerate customer acquisition and drive growth in annual recurring revenue, we may **increase our spending on Sales, Marketing, and R&D** compared to the first half of FY26. However, we will allocate additional resources cautiously, and only continue to raise our expenditure during the second half of FY26 and beyond if there is clear evidence that it directly supports our objective of acquiring 100 new customers.

Questions.



Thank you.

