

4 March 2026

ASX ANNOUNCEMENT

Drilling Commences at Neila Creek project

Highlights

- **Diamond drilling program at Neila Creek project to test interpreted gold and copper targets**
- **Three hole, 1,200 metre first-phase drilling planned**
- **Rock chip samples collected from drill area return significant gold results**
- **First assays from drilling program at the Dooloo Creek project are pending**

Golden Globe Resources Ltd ("GGR" or the "Company") is pleased to provide an update on exploration activities at the Neila Creek project in central New South Wales where drilling has commenced on a Phase 1 program of three diamond holes to provide geological and spatial information of interpreted mineralisation.

Results have also been received for four rock chip samples collected from float and sub-cropping material at areas adjacent to the Phase 1 drilling activities, all sited along the Crown road access, Golds Road. Anomalous to ore grade values were returned from three of the four sample areas (*see images 3-4 below*).. Results are listed in the attached Table 1 and include;

- Sample ID 8864-002 2.160ppm Au
- Sample ID 8864-003 0.855ppm Au
- Sample ID 8864-001 0.418ppm Au

Managing Director, Colin McMillan commented:

“GGR is pleased to announce that drilling activities have commenced at Neila Creek in NSW. This milestone supports our ongoing efforts to aggressively expand exploration activities to now include works at two project – Neila Creek and the Dooloo Creek project in Queensland. Diamond drilling is being carried out for the first time in this promising yet underexplored area of the Lachlan Fold Belt, located in close proximity to some world class deposits and major discoveries, and we anticipate validating the presence of a potential new gold and copper system. Rock chip sampling from float and sub-crop near the drill sites confirms the presence of gold and copper mineralisation.

Alongside exploration activities at Neila Creek, we are pleased with our progress in Queensland at Dooloo Creek with first assay results pending.”

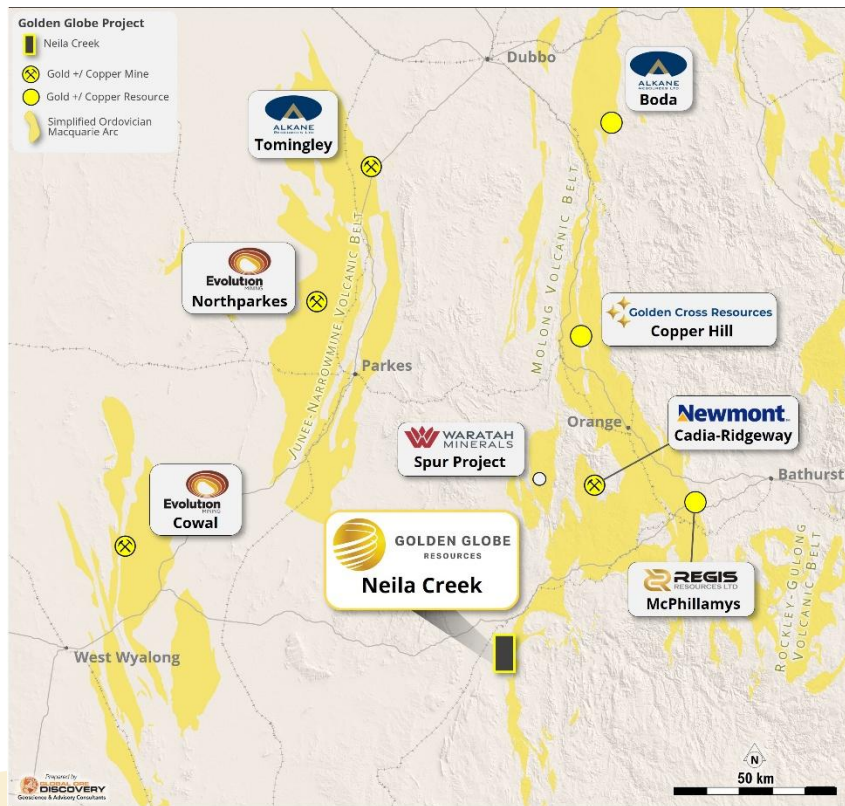
Review of Operations

Drilling commenced in February at the Neila Creek project south of Cowra in Central NSW. Local contractor Central Deep Hole Drilling (CDHD) is conducting the drilling at Neila Creek, as well as at the Dooloo Creek project in Queensland.



Figure 1. Drilling commenced at the Neila Creek project on drill hole PORD001.

The Neila Creek tenement (EL8864) is an early-stage exploration prospect covering approximately 43 square km. It is located in a recognised volcanic belt hosting large scale, world class mineralised systems and therefore offers a unique opportunity for GGR shareholders (see project location map below).



Map 1: Proximity of Neila Creek to known, world class ore systems within the Lachlan Orogeny.

Neila Creek is an early-stage exploration venture with only limited historical activity. Several small-scale operations extracted gold and copper from the site between the early 1900s and the 1930s.

GGR has developed a three-hole exploration drilling program, utilising historical exploration data that has been systematically analysed and further interpreted by the company's geologists, who possess extensive expertise in the targeted style and type of mineralisation.

Furthermore, the Company's use of its proprietary AI-based database for the Eastern LFB (the Argodata Neural Network study) indicates a clear target in this specific area.

GGR now has exploration programs underway across two project – Neila Creek and Dooloo Creek – and is aggressively ramping up activities. The Company will regularly update shareholders on drilling, geology, and assay results as the program continues.

Rock Chip Samples demonstrate mineralised system

Four rock chip samples were collected from float and sub-cropping material at locations adjacent to the drilling sites. Figure 2 below shows the location of three of these sample sites that returned anomalous results.

These samples were collected by GGR geology personnel and submitted to the ALS laboratory in Orange. The three samples are anomalous in Au (to 2.160ppm), with Cu being marginally anomalous (to 82ppm), possibly depleted due to surface weathering effects.

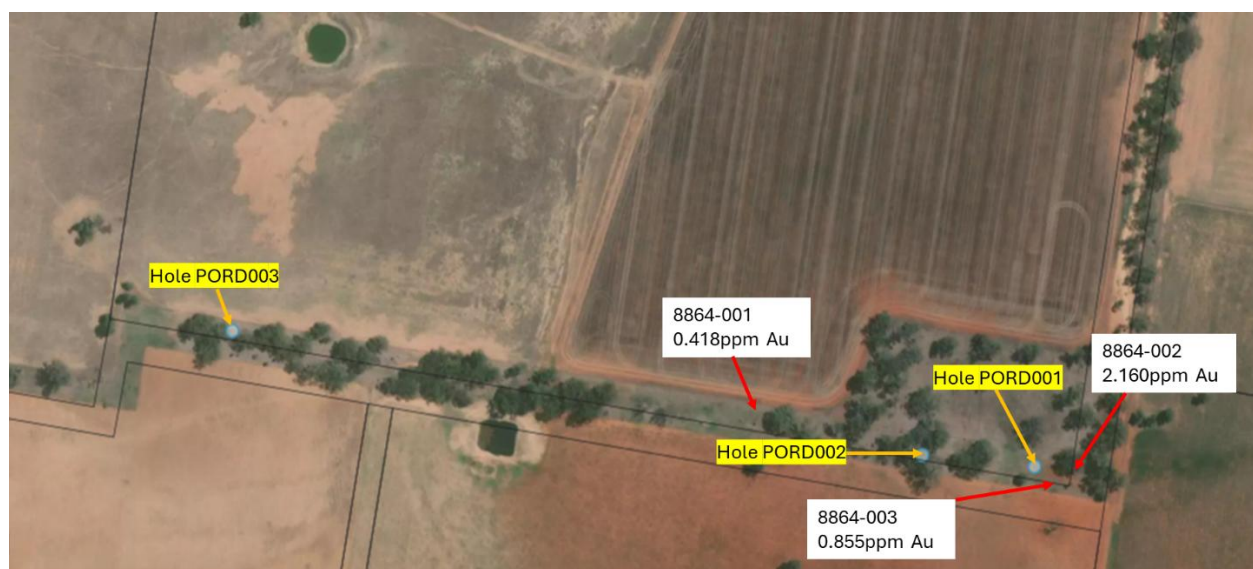


Figure 2. Rock chip sample sites relative to planned diamond drill holes.

The geological characteristics of the samples shown below are as follows: Sample 8864-001 is identified as ferruginous siltstone containing 10% quartz veinlets, while sample 8864-002 comprises intensely silicified volcanoclastic siltstone together with boxwork gossan. Both specimens demonstrate attributes consistent with Ordovician basement rocks located in the region.



Figure 3. Sample 8864-001 (0.418ppm Au)



Figure 4. Sample 8864-002 (2.160ppm Au)

It is considered that the current Phase 1 exploration program will demonstrate the potential of the area leading to a second phase of drilling.

This release has been compiled by and approved by the Board of GGR.

Enquiries

Colin McMillan, Managing Director & CEO

colin.mcmillan@goldengloberesources.com

+61 418 515 385

Ben Jarvis

Six Degrees Investor Relations

+61 (0) 413 150 448

ben.jarvis@sdir.com.au

Source References

- Prospectus Golden Globe Resources Limited ACN 169 640 144; 19 August 2025

Competent Persons Statement

The information included within this release is a fair representation of available information compiled by Colin McMillan B.Sc., MAusIMM, a competent person who is a Member of the Australian Institute of Mining and Metallurgy. Colin McMillan is employed by GGR Ltd as Managing Director & CEO and has been Head of Geology for the Company. Colin McMillan has sufficient experience that is relevant to the style of mineralisation and type of deposits under consideration and to the activity being undertaken to qualify as a Competent Person as defined in the 2012 edition of the Australasian Code of Reporting of Exploration Results, Mineral Resources and Ore Reserves. Colin McMillan consents to the inclusion in this presentation of the matters based on his work in the form and context in which it appears.

Figure Notes and Forward-Looking Statement

The information that has been extracted from prior announcements referred to in this release, are available to view at www.goldengloberesources.com. The Company confirms that it is not aware of any new information or data that materially affects the information included in the original market announcement and, in the case of exploration results, that all material assumptions and technical parameters underpinning the estimates in the relevant market announcement continue to apply and have not materially changed. The Company confirms that the form and context in which the Competent Person's findings are presented have not been materially modified from the original market announcement. The information in this announcement that relates to previous exploration results was first reported by the Company in accordance with ASX listing rule 5.7 in the following Company ASX market releases:

- Prospectus Golden Globe Resources Limited, 19 August 2025

TABLE 1: Neila Creek - rock chip results

Sample_id	MGA_zone	MGA94_E	MGA94_N	AHD	Rocktype	Comments	Prospect	Sample_Type	Au_ppm	Ag_ppm	As_ppm	Co_ppm	Cu_ppm	Fe_%	Mo_ppm	Ni_ppm	Pb_ppm	S_%	Zn_ppm
8864-001	55H	657488	6244195	363	ferruginous siltstone; 10% quartz veinlets	weakly gossanous	Pope of Rome	subcrop	0.42	1.64	5	2	13	3.59	9.01	5.7	19.0	0.04	6
8864-002	55H	657653	6244143	358	intensely silicified volcaniclastic siltstone + boxwork gossan	north end of Pope of Rome trend	Pope of Rome	float	2.16	1.05	17	5	82	8.48	34.20	15.0	17.6	0.04	24
8864-003	55H	657650	6244140	358	intensely silicified volcaniclastic siltstone	north end of Pope of Rome trend	Pope of Rome	float	0.86	0.75	7	3	19	3.97	15.20	6.6	12.6	0.02	7
8864-004	55H	658128	6245004	335	white vein quartz +/- Feox	angular blocks to 1.2m; beside Golds Road	Un-known	float	0.01	0.15	3	1	12	0.81	0.23	1.4	2.6	-0.01	4

APPENDIX A: Neila Creek - Rock Sampling

Criteria	Explanation	Commentary
Sampling Techniques	<i>Nature and quality of sampling (e.g., cut channels, random chips, are specific specialised industry standard measurement tools appropriate to the minerals under investigation, such as downhole gamma sondes, or handheld XRF instruments, etc). These examples should not be taken as limiting the broad meaning of sampling.</i>	Grab rock samples from float and/or subcrop All samples submitted to ALS Orange for preparation and assay.
	<i>Include reference to measures taken to ensure sample representivity and the appropriate calibration of any measurement tools or systems used.</i>	Reconnaissance/scout sampling only; 1kg to 3kg sample size.
	<i>Aspects of the determination of mineralisation that are Material to the Public Report. In cases where 'industry standard' work has been done this would be relatively simple (e.g. 'reverse circulation drilling was used to obtain 1m samples from which 3 kg was pulverised to produce a 30g charge for fire assay'). In other cases, more explanation may be required, such as where there is coarse gold that has inherent sampling problems. Unusual commodities or mineralisation types (e.g. submarine nodules) may warrant disclosure of detailed information</i>	Each sample was dried, crushed and pulverised as per standard industry practice. Samples dried, crushed and pulverised to 85% passing 75 microns. Gold (Au) was determined by 30g fire assay (method Au-AA23) with a detection limit 0.005ppm. Multielement assaying was completed for 48 elements by 0.25g four-acid digest with mass spectrometer determination (method ME-MS61).
Drilling Techniques	<i>Drill type (e.g. core, reverse circulation, open-hole hammer, rotary air blast, auger, Bangka, sonic, etc) and details (e.g. core diameter, triple or standard tube, depth of diamond tails, face - sampling bit or other type, whether core is oriented and if so, by what method, etc)</i>	Not drilling. Not Applicable for rock chip sampling
Drill Sample Recovery	<i>Method of recording and assessing core and chip sample recoveries and results assessed.</i>	Not drilling. Not Applicable for rock chip sampling
	<i>Measures taken to maximise sample recovery and ensure representative nature of the samples</i>	Not drilling. Not Applicable for rock chip sampling
	<i>Whether a relationship exists between sample recovery and grade and whether sample bias may have occurred due to preferential loss/gain of fine/coarse material.</i>	Not Applicable. Reconnaissance/scout sampling only
Logging	<i>Whether core and chip samples have been geologically and geotechnically logged to a level of detail to support appropriate Mineral Resource estimation, mining studies and metallurgical studies</i>	Samples have lithology and any surface structural data recorded. Nature of occurrence and details of the sample site recorded.
	<i>Whether logging is qualitative or quantitative in nature. Core (or costean, channel, etc) photography</i>	Qualitative and quantitative data is collected for rock samples taken. Samples photographed at time of collection.
	<i>The total length and percentage of the relevant intersections logged</i>	Not drilling. Not Applicable for rock chip sampling
Sub-sampling techniques and sample preparation	<i>If core, whether cut or sawn and whether quarter, half or all core taken</i>	Not drilling. Not Applicable for rock chip sampling
	<i>If non-core, whether riffled, tube sampled, rotary split, etc and whether sampled wet or dry.</i>	Not drilling. Not Applicable for rock chip sampling
	<i>For all sample types, the nature, quality and appropriateness of the sample preparation technique</i>	Samples were dried, crushed and pulverised to 85% passing 75 microns - this is considered to be an appropriate method to homogenise the sample to allow subsampling for the various assay techniques.

Criteria	Explanation	Commentary
	<i>Quality control procedures adopted for all sub-sampling stages to maximise representivity of samples</i>	Not Applicable, reconnaissance/scout sampling only. ALS conduct internal check sampling for every 20 samples for Au and every 20 samples for multielement assay.
	<i>Measures taken to ensure that the sampling is representative of the in-situ material collected, including for instance results for field duplicate/second-half sampling.</i>	Not Applicable, reconnaissance/scout sampling only. The samples were crushed and pulverised to 85% passing 75 microns which is considered to appropriately homogenise the entire sample.
	<i>Whether sample sizes are appropriate to the grain size of the material being sampled</i>	Sample sizes are industry standard and considered appropriate for the grainsize present.

Criteria	Explanation	Commentary
Quality of assay data and laboratory tests	<i>The nature, quality and appropriateness of the assaying and laboratory procedures used and whether the technique is considered partial or total</i>	Standard assay procedures were performed by a reputable assay lab, (ALS Group – Orange laboratory). Gold (Au) was determined by 30g fire assay (method Au-AA23) with a detection limit of 0.005ppm. Multielement assaying was completed for 48 elements by 0.25g four-acid digest with mass spectrometer determination (method ME-MS61). Techniques are considered total.
	<i>For geophysical tools, spectrometers, handheld XRF instruments, etc, the parameters used in determining the analysis including instrument make and model, reading times, calibrations factors applied and their derivation, etc</i>	No geophysical tools were used in the determination of assay results.
	<i>Nature of quality control procedures adopted (e.g. standards, blanks, duplicates, external laboratory checks) and whether acceptable levels of accuracy (i.e. lack of bias) and precision have been established.</i>	Reconnaissance/scout sampling only. No standards or duplicates.
Verification of sampling and assaying	<i>The verification of significant intersections by either independent or alternative company personnel.</i>	Not drilling. Not Applicable for rock chip sampling
	<i>The use of twinned holes.</i>	Not drilling. Not Applicable for rock chip sampling
	<i>Documentation of primary data, data entry procedures, data verification, data storage (physical and electronic) protocols.</i>	Data store in Microsoft Excel files. Photographs electronically stored.
	<i>Discuss any adjustment to assay data</i>	Assay data is not adjusted.
Location of data points	<i>Accuracy and quality of surveys used to locate drill holes (collar and down-hole surveys), trenches, mine workings and other locations used in Mineral Resource estimation.</i>	Samples located by hand held GPS.
	<i>Specification of the grid system used</i>	All coordinates are based on Map Grid Australia Zone 55H, Geodetic Datum of Australia 1994
	<i>Quality and adequacy of topographic control</i>	Samples were located by handheld GPS.
Data spacing and distribution	<i>Data spacing for reporting of Exploration Results</i>	Data spacing is variable. Reconnaissance/scout sampling only based on distribution of exposure and samples of economic interest.
	<i>Whether the data spacing, and distribution is sufficient to establish the degree of geological and grade continuity appropriate for the Mineral Resource and Ore Reserve estimation procedure(s) and classifications applied.</i>	Not Applicable
	<i>Whether sample compositing has been applied</i>	Sample compositing is not applied.
Orientation of data in relation to geological structure	<i>Whether the orientation of sampling achieves unbiased sampling of possible structures and extent to which this is known, considering the deposit type</i>	Reconnaissance/scout sampling is based on distribution of exposure and samples of economic interest.
	<i>If the relationship between the drilling orientation and the orientation of key mineralised structures is considered to have introduced sampling bias, this should be assessed and reported if material</i>	Not drilling. Not Applicable for rock chip sampling
Sample security	<i>The measures taken to ensure sample security</i>	Sample chain of custody has been managed by the employees of Golden Globe Resources (GGR), who undertook the sampling, from the field to assay laboratory. All samples are secured in tied and numbered calico bags and transported to ALS in Orange by GGR personnel. All sample submissions are documented via ALS tracking system, and all assays are reported via email. Sample pulps are returned to site and will be stored for an appropriate length of time (minimum 3 years). The Company has in place protocols to ensure data security.

Section 2: Reporting of Exploration Results – Neila Creek Project (Criteria listed in the previous section, also apply to this section)

Criteria	Explanation	Commentary																																												
Mineral Tenure and Land Tenure status	<i>Type, reference name/number, location and ownership including agreements or material issues with third parties such as joint ventures, partnerships, overriding royalties, native title interests, historical sites, wilderness or national park and environmental settings</i>	All sampling was conducted on EL8864; GGR has a Farm-In Joint Venture Agreement in which it can earn up to 100% interest in the granted tenement in NSW. The majority of the licence is covered by freehold farmland with some access via Crown Land roadways.																																												
	<i>The security of the tenure held at the time of reporting along with any known impediments to obtaining a licence to operate in the area</i>	The exploration licence is in good standing. EL8864 expires 17/06/2027.																																												
Exploration done by other parties	Acknowledgment and appraisal of exploration by other parties	The Neila Creek (formerly known as Morongla Creek) area has been covered by previous exploration dating back to 1970 and includes;																																												
		<table border="1"> <thead> <tr> <th>Year</th> <th>Company</th> <th>EL</th> <th>Activity</th> </tr> </thead> <tbody> <tr> <td>1970 - 1972</td> <td>Jododex Australia (Malone, 1972)</td> <td>0300</td> <td>Regional stream, soil and rock chip sampling (analysis of Cu, Pb and Zn only). IP/resistivity surveys and five diamond and 14 percussion drill holes (outside EL8864). Aimed mainly at Koorawatha prospect, off title.</td> </tr> <tr> <td>1981 - 1983</td> <td>Noranda Australia (Small, 1983a)</td> <td>1648</td> <td>Geological mapping, rock chip sampling, petrography, soil sampling, geophysical surveys and percussion drilling. Focussed on Pope of Rome prospect.</td> </tr> <tr> <td>1982 - 1983</td> <td>Noranda Australia (Small, 1983b)</td> <td>1971</td> <td>Regional selective rock chip sampling and geophysical surveys. One anomalous area – Badgery Grid – located on NE boundary of title.</td> </tr> <tr> <td>1989 - 1994</td> <td>Climax Mining Ltd (Hine, 1990)</td> <td>3385</td> <td>Open file review, reconnaissance geological mapping, petrology, soil BLEG, bulk cyanide leach stream sediment sampling, rock chip sampling.</td> </tr> <tr> <td>1992</td> <td>Dominion Mining (Harley, 1992)</td> <td>4265</td> <td>Intrusive related Cu-Au mineralisation targeted, but no field work conducted.</td> </tr> <tr> <td>1992 - 1993</td> <td>Placer Exploration Ltd (Kirwin 1993)</td> <td>4440 & 4441</td> <td>Reconnaissance level sampling and analysis, regional shallow drilling, detailed mapping, sampling & analysis.</td> </tr> <tr> <td>1996 - 1998</td> <td>Endeavour Minerals (Timms 1999)</td> <td>5125</td> <td>Soil sampling and rock chip sampling over old Pope of Rome mine. VLF electromagnetic, magnetic (vertical field) and radiometric surveys conducted.</td> </tr> <tr> <td>1998 - 2012</td> <td>Gateway Mining Ltd – with JV partners: Straits (2003), Goldminco (2003-2006) and Minotaur (2006 – 2011) (Gordon 2014)</td> <td>5514 & 6102</td> <td>Helicopter-borne VTEM survey (the only work that covered current EL8864), rock chip and soil sampling, geological mapping, ground magnetics, IP and EM surveys, RC drilling.</td> </tr> <tr> <td>2007 - 2011</td> <td>Minotaur Operations Pty Ltd (van der Stelt 2011)</td> <td>6806</td> <td>Helicopter-borne VTEM survey, ground EM, XRF and conventional soils (none took place on EL8864).</td> </tr> <tr> <td>2017- 2018</td> <td>Emmerson Resources (Lachlan Resources & Duke Exploration) (Walters 2019)</td> <td>8590</td> <td>Full open file review and assessment of data.</td> </tr> </tbody> </table>	Year	Company	EL	Activity	1970 - 1972	Jododex Australia (Malone, 1972)	0300	Regional stream, soil and rock chip sampling (analysis of Cu, Pb and Zn only). IP/resistivity surveys and five diamond and 14 percussion drill holes (outside EL8864). Aimed mainly at Koorawatha prospect, off title.	1981 - 1983	Noranda Australia (Small, 1983a)	1648	Geological mapping, rock chip sampling, petrography, soil sampling, geophysical surveys and percussion drilling. Focussed on Pope of Rome prospect.	1982 - 1983	Noranda Australia (Small, 1983b)	1971	Regional selective rock chip sampling and geophysical surveys. One anomalous area – Badgery Grid – located on NE boundary of title.	1989 - 1994	Climax Mining Ltd (Hine, 1990)	3385	Open file review, reconnaissance geological mapping, petrology, soil BLEG, bulk cyanide leach stream sediment sampling, rock chip sampling.	1992	Dominion Mining (Harley, 1992)	4265	Intrusive related Cu-Au mineralisation targeted, but no field work conducted.	1992 - 1993	Placer Exploration Ltd (Kirwin 1993)	4440 & 4441	Reconnaissance level sampling and analysis, regional shallow drilling, detailed mapping, sampling & analysis.	1996 - 1998	Endeavour Minerals (Timms 1999)	5125	Soil sampling and rock chip sampling over old Pope of Rome mine. VLF electromagnetic, magnetic (vertical field) and radiometric surveys conducted.	1998 - 2012	Gateway Mining Ltd – with JV partners: Straits (2003), Goldminco (2003-2006) and Minotaur (2006 – 2011) (Gordon 2014)	5514 & 6102	Helicopter-borne VTEM survey (the only work that covered current EL8864), rock chip and soil sampling, geological mapping, ground magnetics, IP and EM surveys, RC drilling.	2007 - 2011	Minotaur Operations Pty Ltd (van der Stelt 2011)	6806	Helicopter-borne VTEM survey, ground EM, XRF and conventional soils (none took place on EL8864).	2017- 2018	Emmerson Resources (Lachlan Resources & Duke Exploration) (Walters 2019)	8590	Full open file review and assessment of data.
		Year	Company	EL	Activity																																									
		1970 - 1972	Jododex Australia (Malone, 1972)	0300	Regional stream, soil and rock chip sampling (analysis of Cu, Pb and Zn only). IP/resistivity surveys and five diamond and 14 percussion drill holes (outside EL8864). Aimed mainly at Koorawatha prospect, off title.																																									
		1981 - 1983	Noranda Australia (Small, 1983a)	1648	Geological mapping, rock chip sampling, petrography, soil sampling, geophysical surveys and percussion drilling. Focussed on Pope of Rome prospect.																																									
		1982 - 1983	Noranda Australia (Small, 1983b)	1971	Regional selective rock chip sampling and geophysical surveys. One anomalous area – Badgery Grid – located on NE boundary of title.																																									
		1989 - 1994	Climax Mining Ltd (Hine, 1990)	3385	Open file review, reconnaissance geological mapping, petrology, soil BLEG, bulk cyanide leach stream sediment sampling, rock chip sampling.																																									
		1992	Dominion Mining (Harley, 1992)	4265	Intrusive related Cu-Au mineralisation targeted, but no field work conducted.																																									
		1992 - 1993	Placer Exploration Ltd (Kirwin 1993)	4440 & 4441	Reconnaissance level sampling and analysis, regional shallow drilling, detailed mapping, sampling & analysis.																																									
		1996 - 1998	Endeavour Minerals (Timms 1999)	5125	Soil sampling and rock chip sampling over old Pope of Rome mine. VLF electromagnetic, magnetic (vertical field) and radiometric surveys conducted.																																									
		1998 - 2012	Gateway Mining Ltd – with JV partners: Straits (2003), Goldminco (2003-2006) and Minotaur (2006 – 2011) (Gordon 2014)	5514 & 6102	Helicopter-borne VTEM survey (the only work that covered current EL8864), rock chip and soil sampling, geological mapping, ground magnetics, IP and EM surveys, RC drilling.																																									
2007 - 2011	Minotaur Operations Pty Ltd (van der Stelt 2011)	6806	Helicopter-borne VTEM survey, ground EM, XRF and conventional soils (none took place on EL8864).																																											
2017- 2018	Emmerson Resources (Lachlan Resources & Duke Exploration) (Walters 2019)	8590	Full open file review and assessment of data.																																											
Geology	<i>Deposit type, geological setting and style of mineralisation</i>	<p>Known mineral occurrences within the tenement area are classified by the NSW Geological Survey (NSWGS) (Downes, 1998) as structurally-controlled gold and/or copper occurrences and are hosted predominantly within the Silurian Cudal Group units. However, the interpretation by GGR geologists is that underlying Ordovician basement rocks will be present and host to the target gold/copper intrusive related mineralisation system.</p> <p>There are three main areas containing historical workings (as outlined below) which constitute the initial Area of Interest (AoI) for GGR, as well as a number of other unnamed abandoned workings across the northern half of the title.</p> <ul style="list-style-type: none"> The Pope of Rome Mine workings are located 2.5 km east of Morongla Creek and extend over a north-south oriented 1 km strike length. The main workings are characterised by gossans at surface, trenches, shafts with drives, and stoping, over an area 80 m in diameter. Pits occur along the strike length of the prospect. About 10 tons of copper ore were produced between 1900 and 1905, with primary sulfides of chalcopyrite, and pyrite and malachite secondary. The mineralisation is found within quartz veins and felsic volcanic wall rocks surrounded by chlorite-carbonate-sericite-epidote alteration. Voria's Prospect is located 1 km east of Morongla Creek in the central portion of the title. It consists of two shallow pits approximately 200 m apart on quartz veins with Fe/Mn oxides after sulfide (?pyrite). The host rocks are altered andesitic tuff and calc-silicate rock, which have been mapped by the NSW Geological Survey as Avoca Valley Formation, however Hine (1990) assigns these rocks to the Ordovician Kenyu Formation. Anomalous Au (max 2.49 g/t) was returned in rock chips in vein quartz. The Fairview Mine sits 5 km north of the township of Morongla Creek in the northern portion of the title. Gold ore was produced from the mine in the mid-1930s. The gold, as gold and pyrite, is hosted in quartz veins which dip steeply to the north. The mine was recorded as having consisted of shafts, drives and stopes, however only a mullock-filled shaft remains alongside a 35+ m long trench (<1 m deep) immediately east of the shaft. 																																												

Criteria	Explanation	Commentary
Drill hole Information	<i>A summary of all information material to the understanding of the exploration results including a tabulation of the following information for all Material drill holes:</i> <ul style="list-style-type: none"> - easting and northing of the drill hole collar - elevation or RL (Reduced Level-elevation above sea level in metres) of the drill hole collar - dip and azimuth of the hole - down hole length and interception depth - hole length 	The results and all information relating to them are covered in Table 1 and the body of the announcement.
	<i>If the exclusion of this information is justified on the basis that the information is not Material and this exclusion does not detract from the understanding of the report, the Competent Person should clearly explain why this is the case.</i>	Not applicable as all sample information is included.
Data aggregation methods	<i>In reporting Exploration Results, weighting, averaging techniques, maximum and/or minimum grade truncations (e.g. cutting of high grades) and cut-off grades are usually Material and should be stated.</i>	Reconnaissance/scout sampling only. All results reported.
	<i>Where aggregate intercepts incorporate short lengths of high-grade results and longer lengths of low grade results, the procedure used for such aggregation should be stated and some typical examples of such aggregations should be shown in detail.</i>	Not drilling. Not Applicable for rock chip sampling
	<i>The assumptions used for any reporting of metal equivalent values should be clearly stated</i>	No metal equivalence quoted.
Relationship between mineralisation widths and intercept lengths	<i>These relationships are particularly important in the reporting of Exploration Results. If the geometry of the mineralisation with respect to the drill hole angle is known, its nature should be reported. If it is not known and only the down hole lengths are reported, there should be a clear statement to this effect (e.g. 'down hole length, true width not known').</i>	Reconnaissance/scout sampling only.
Diagrams	<i>Appropriate maps and sections (with scales) and tabulations of intercepts should be included for any significant discovery being reported. These should include, but not be limited to a plan view of drill hole collar locations and appropriate sectional views.</i>	See body of announcement.
Balanced reporting	<i>Where comprehensive reporting of all Exploration Results is not practicable, representative reporting of both low and high grades and/or widths should be practiced to avoid misleading reporting of Exploration Results.</i>	See body of announcement.
Other substantive exploration data	<i>Other exploration data, if meaningful and material, should be reported including (but not limited to): geological observations; geophysical survey results; geochemical survey results; bulk samples-size and method of treatment; metallurgical test results; bulk density, groundwater, geotechnical and rock characteristics; potential deleterious or contaminating substances.</i>	See body of announcement.
Further work	<i>The nature and scale of planned further work (e.g. tests for lateral extensions or depth extensions or large-scale step-out drilling).</i>	Further work will include additional rock chip sampling and diamond drilling to determine target location and extent.
	<i>Diagrams clearly highlighting the areas of possible extensions, including the main geological interpretations and future drilling areas, provided this information is not commercially sensitive.</i>	See body of announcement.