

EXPLORATION UPDATE

HIGHLIGHTS

- Mapping and sampling targeting anomalous gold in stream sediment samples to commence at the Pilgangoora North Project
- Heritage agreements at the Peninsula Prospect approach execution as Special Prospecting Licenses advance toward grant
- Approval received for RC drilling at Carney's CID Prospect, subject to completion of a Heritage Survey with approval for Coopers CID in progress
- Orientation stream sediment sampling to commence at Rocklea Gold Project after significant tenement acquisitions over prospective geological structures
- Final results received from aircore drilling at Tin Can and Epithermal with follow up drilling planned

Peregrine Gold Limited ("Peregrine" or the "Company") (ASX: PGD) is pleased to provide an exploration update across its portfolio of 100% owned projects, located in the Pilbara Region, Western Australia (Figure 1).

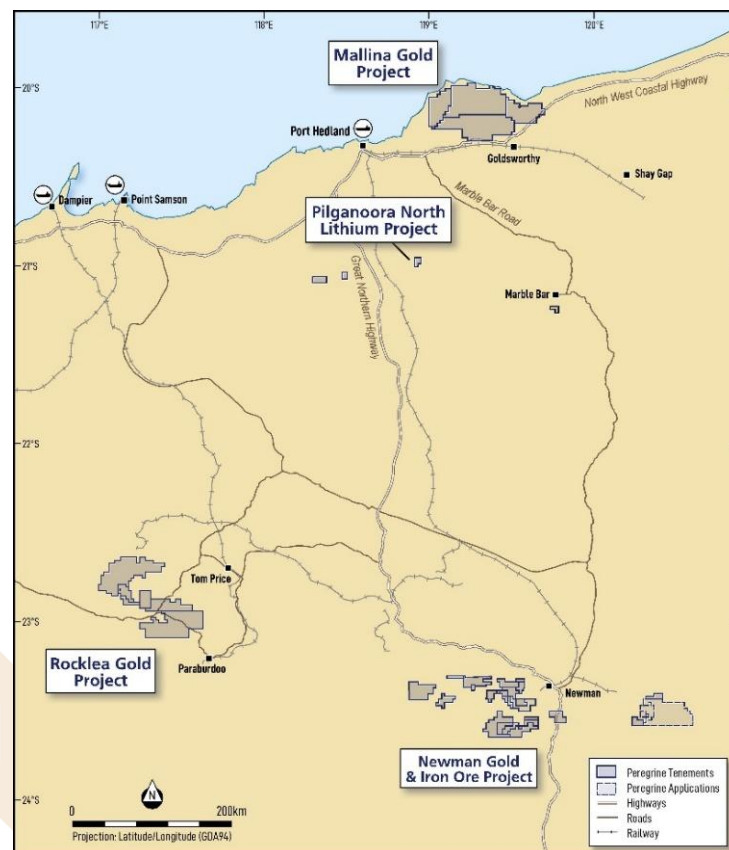


Figure 1: Peregrine Gold Limited project locations – Pilbara Region, Western Australia.

¹ Refer ASX Announcements titled “Pilgangoora North Lithium Project”, “Onground Exploration Commenced at Pilgangoora Lithium Project” and “Anomalous Lithium, Tantalum and Gold Identified at Pilgangoora North” released 25 March 2022, 6 October 2022 and 3 February 2023 respectively.

² Refer ASX Announcement titled “Agreement Executed with Mark Creasy over Peninsula Prospect” released 26 March 2025.

Pilgangoora North Project

In 2022¹, the Company conducted reconnaissance stream sediment sampling over Exploration Licence E45/5775 predominately focussing on the lithium prospectivity. As part of the geochemical analytical protocol, all samples were analysed for 50 plus multi-elements, including gold.

In line with the strong market sentiment and tail winds toward precious metals, a desktop review of the 2022 stream sediment sample geochemical results was conducted in late 2025 focusing on the gold geochemistry (Table 3).

As a result of the review, a follow up work programme will commence in April 2026 to assess the anomalous gold in streams (Figure 2) and will include rock sampling and geological mapping.

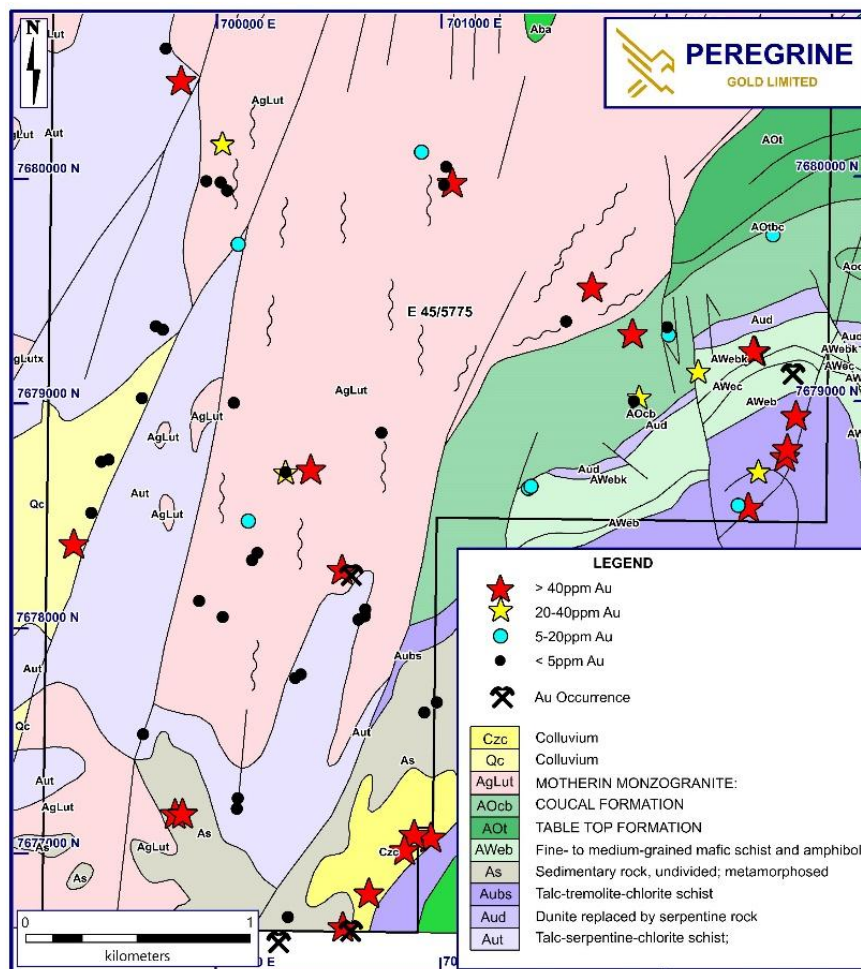


Figure 2: Pilgangoora North stream sediment gold assays with overlaying interpreted geology.


Peninsula Special Prospecting Licence (“SPL”) Agreement with Mark Creasy

In March 2025², the Company announced it had executed an agreement via its wholly owned subsidiary Pilbara Gold Exploration Pty Ltd, with prominent prospector and major shareholder Mark Creasy (“Agreement”). The Agreement permits the exploitation of gold within three Special

¹ Refer ASX Announcements titled “Pilgangoora North Lithium Project”, “Onground Exploration Commenced at Pilgangoora Lithium Project” and “Anomalous Lithium, Tantalum and Gold Identified at Pilgangoora North” released 25 March 2022, 6 October 2022 and 3 February 2023 respectively.

² Refer ASX Announcement titled “Agreement Executed with Mark Creasy over Peninsula Prospect” released 26 March 2025.

Prospecting Licenses (“SPL”) applied for over the Peninsula Prospect E52/3850 (Figure 3) located within the Company’s Newman Gold Project (Figure 1).



¹ Refer ASX Announcements titled “Pilgangoora North Lithium Project”, “Onground Exploration Commenced at Pilgangoora Lithium Project” and “Anomalous Lithium, Tantalum and Gold Identified at Pilgangoora North” released 25 March 2022, 6 October 2022 and 3 February 2023 respectively.

² Refer ASX Announcement titled “Agreement Executed with Mark Creasy over Peninsula Prospect” released 26 March 2025.

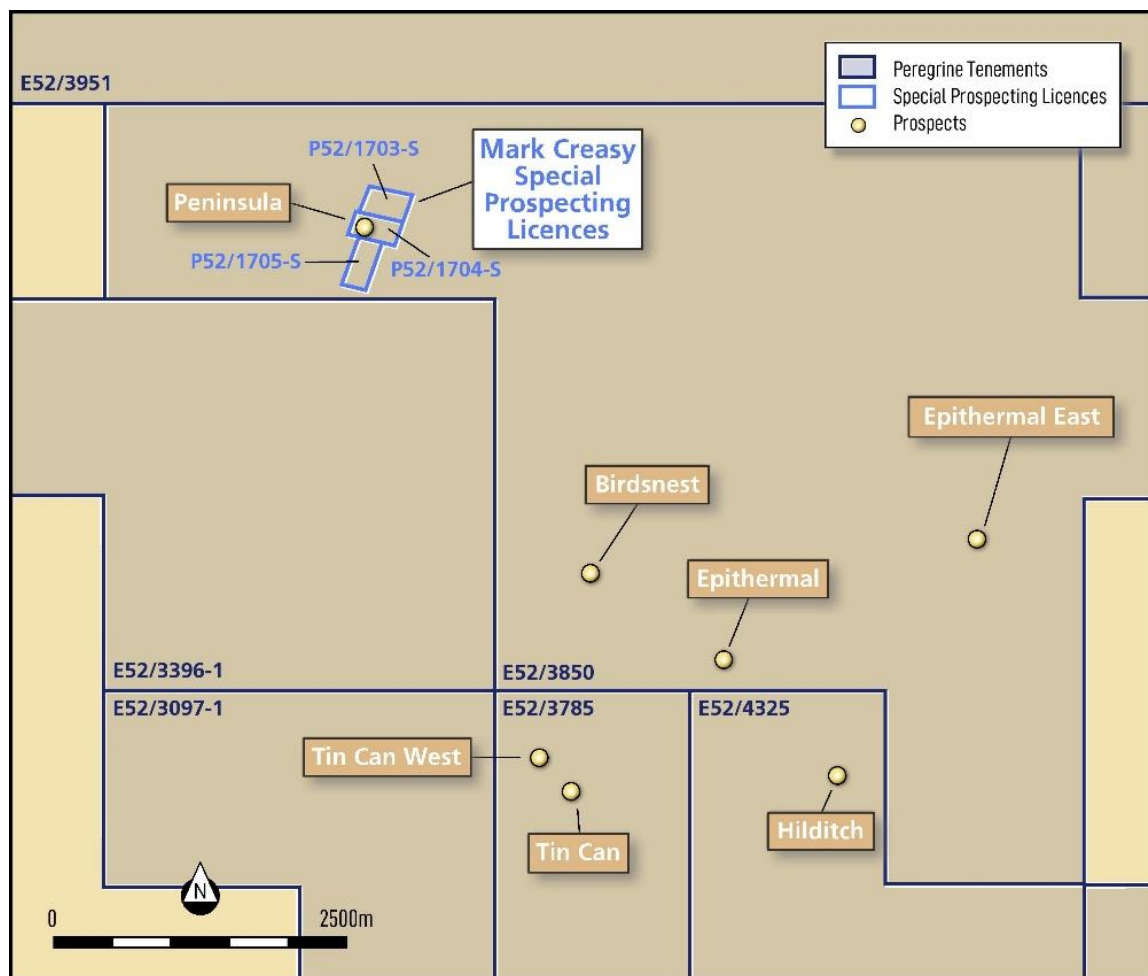


Figure 3: Location of Special Prospecting Licences within the Peninsula Prospect - Newman Gold & Iron Ore Project.

The Company is pleased to advise that the heritage agreement over the SPL's is in the latter stages of negotiation between Mark Creasy and the Karlka Nyiyaparli Aboriginal Corporation RNTBC ("KNAC"), with the expectation that execution of the agreement will occur in the near future.

The SPL applications continue to advance through the regulatory process with grant expected in Q1 or Q2 of the 2026 calendar year. The Company confirms it has received no information to indicate the SPL's will not be granted and looks forward to the exploitation of gold mineralisation over the SPL's upon their grant subject to heritage matters and approval of PoW's.

Coopers & Carneys Channel Iron Deposit ("CID") Prospects

In July 2025, the Company announced the discovery of the Coopers CID Prospect³ ("Coopers") — a large-scale high-grade iron ore feature extending 6.4km in length and up to 200m in width and averaging approximately 57% Fe with low deleterious elements (Figure 4).

³ Refer ASX Announcement titled "High Grade Channel Iron Discovery" released 23 July 2025.

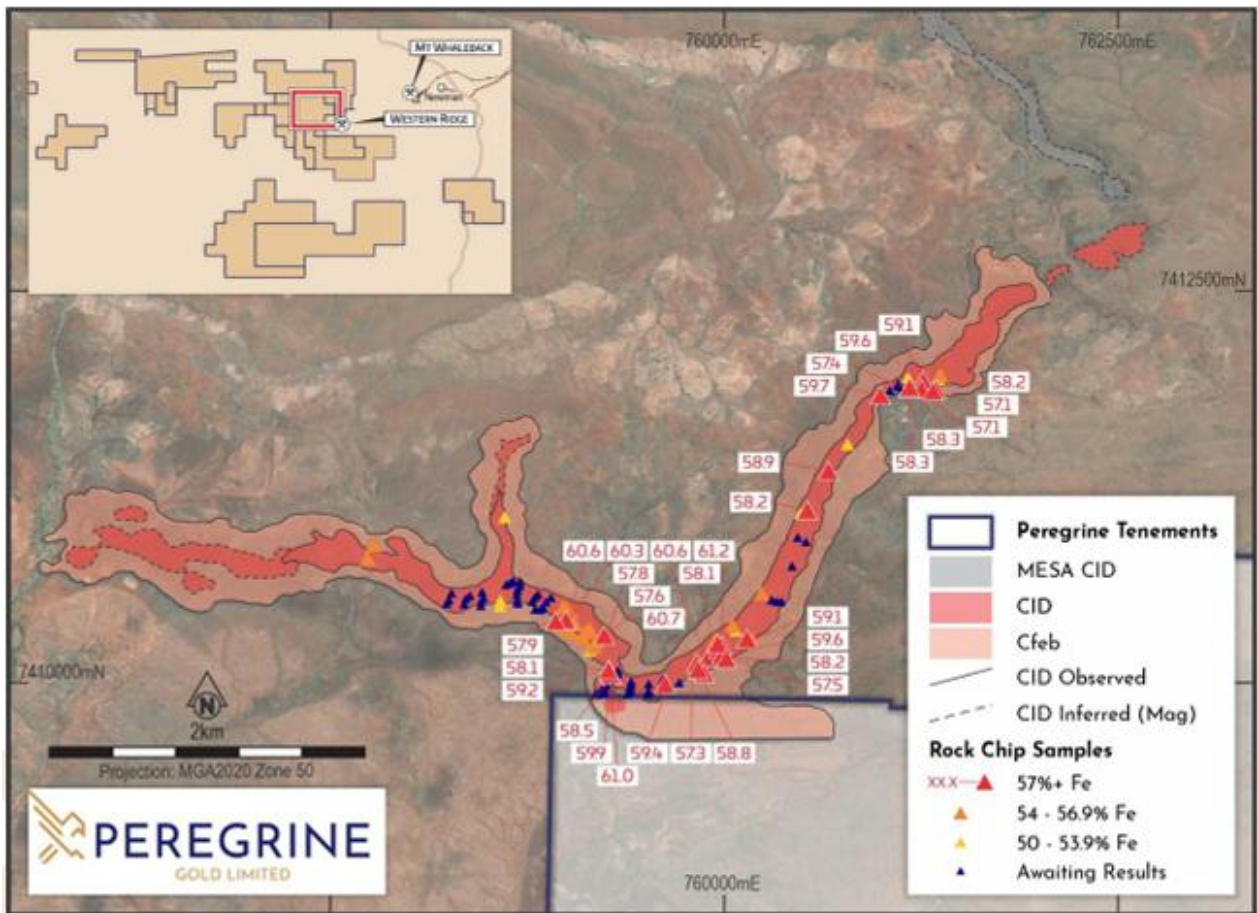


Figure 4: Coopers CID Prospect with associated Iron results (rock chip).

Due to the magnetic character of the Coopers CID, a detailed review of aeromagnetic data over the entire Newman Gold & Iron Ore Project was carried out to identify exposed or blind CID occurrences. Subsequent to this review and following the inspection and sampling of some narrow mesa style CID outcrops in the Carneys Well area, the Company announced the discovery of a second high-grade CID Prospect ~6km to the southeast of Coopers named Carneys CID Prospect⁴ ("Carneys"). Complimentary to Coopers, Carneys represents another large-scale, high-grade CID target comprising up to 1.1km strike in outcrop averaging grades of 55% Fe, also with low level deleterious elements (Figure 5), with an additional 4.6km of strike inferred from magnetics under cover.

⁴ Refer ASX Announcement titled "Second High-Grade CID Prospect Identified at Newman" released 26 November 2025.

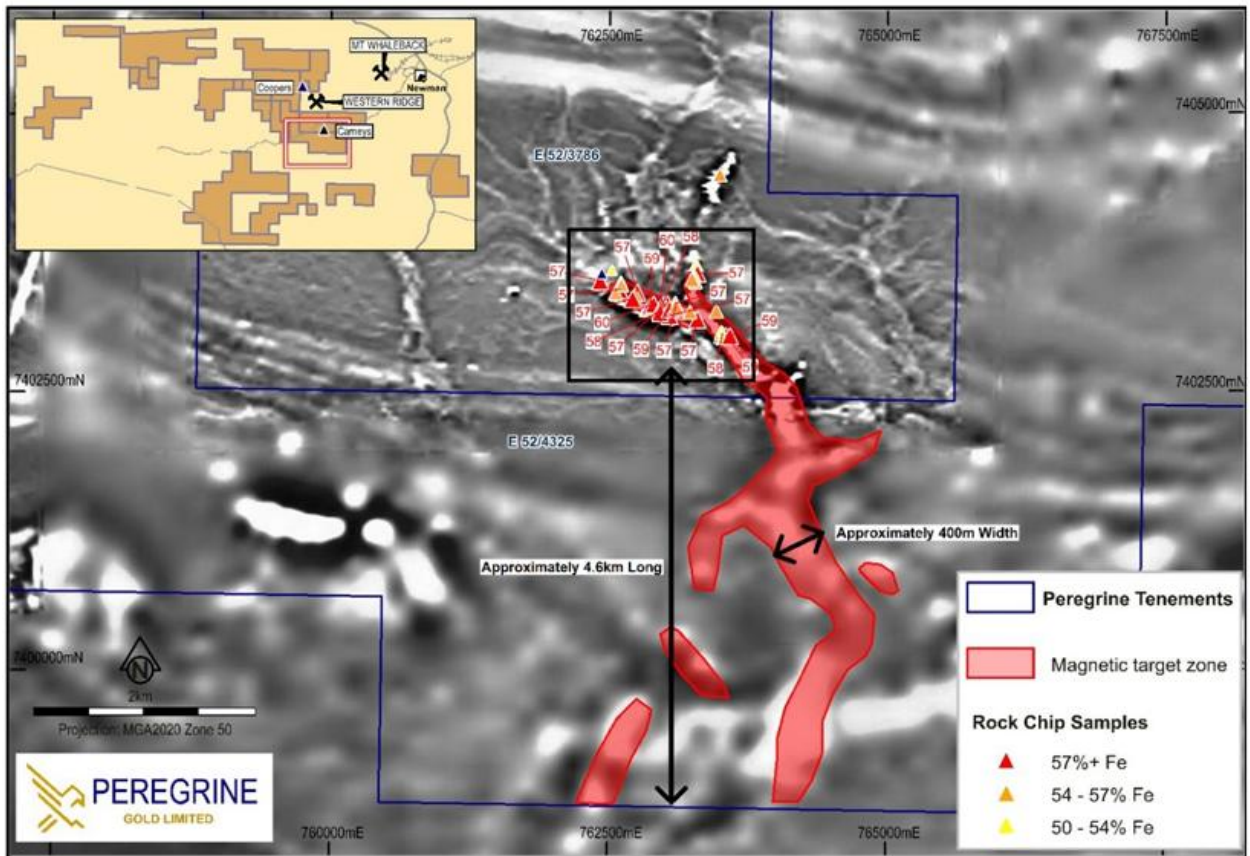


Figure 5: Carneys CID Prospect, with outcropping portion sampled and inferred (under cover) extension outlined in red.

Both prospects are strategically located within several kilometres from BHP’s world-class Western Ridge Project, approximately 13 km from Mt Whaleback, and 18 km from the town of Newman, positioning it within one of the most established iron-ore mining hubs globally (Figures 4 & 5).

Carneys CID Prospect

The Company confirms it has lodged a Programme of Work (“PoW”) with the Department of Mines, Petroleum and Exploration (“DMPE”) which has since been approved.

A heritage notice has also been sent to KNAC in order to schedule a heritage survey as soon as possible. Upon completion of the survey, the Company anticipates commencing a Reverse Circulation (“RC”) drilling programme to confirm the extent of the discovery.

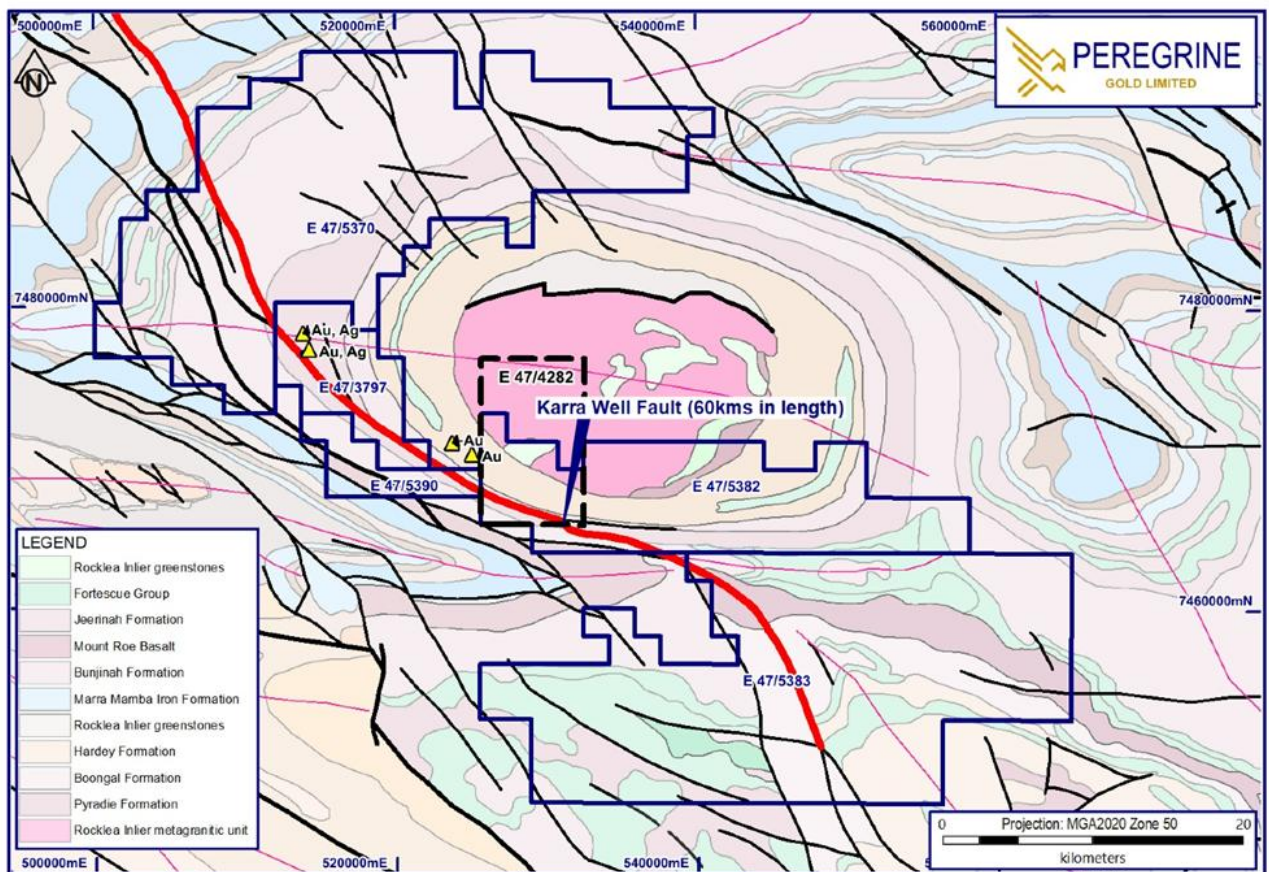
Coopers CID Prospect

The Company also confirms it has lodged a PoW with the DMPE. The DMPE have since advised that in forming its decision to grant the PoW, the Company will need to provide an Exploration Environmental Management Plan (EEMP) outlining strategies to avoid or minimise impacts to significant flora and fauna that may be present in the area. The company has engaged a flora and fauna consultant to assess the DMPE request and advise as to whether a flora and fauna survey is required. Subject to the consultant’s advice, a flora and fauna survey could be undertaken in March 2026.

In preparation for future RC drilling, a heritage notice has also been sent to the KNAC to request a heritage survey. Upon completion of the heritage survey and a resolution to flora and fauna matters, the PoW can be reassessed for potential grant to permit RC drilling at this exciting target.

Rocklea Gold Project

The Company has recently significantly expanded the Rocklea Gold Project^{5,6} with five new Exploration Licence applications for approximately 1,250km². The Rocklea Gold Project is strategically located to the north, south and west of the Rocklea Dome and dominated by the Hardey Formation, Bongal Formation and the Pyradie Formation within the Fortescue Group



(Figure 6).

Figure 6: Rocklea Gold Project with interpreted geology.

In recognition of the significant increase in prospectivity and strategic importance of this project, the Company is pleased to advise that a limited orientation surface sampling programme will commence, subject to pastoral approval which is expected imminently. The Company anticipates mobilizing Peregrine field crew to site in March 2026, subject to receipt of this approval.

⁵ Refer ASX Announcement titled “Acquisition Expands Footprint at Rocklea Gold Project” released 11 December 2025.

⁶ Refer ASX Announcement titled “PGD Acquires Significant New Land Position at Rocklea Gold Project” released 3 February 2026.

Mallina Gold Project

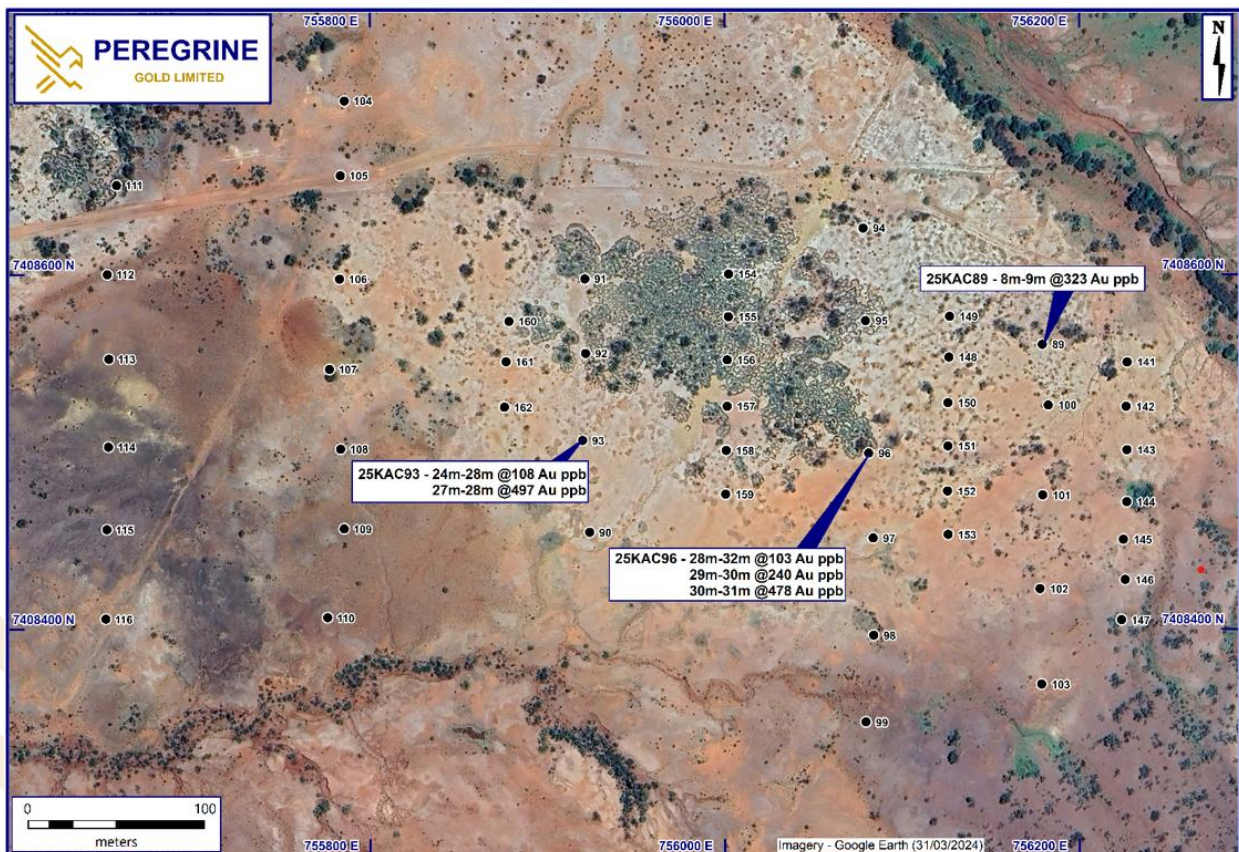
In August 2025, the Company, along with representatives of the Wanparta Aboriginal Corporation RNTBC (“WAC”), initiated a heritage survey at the Mallina Gold Project (“Mallina”).

Due to operational challenges and the ambitious nature of the program the heritage survey did not cover all the planned targets. To progress Mallina, the Company is now planning to undertake a more limited programme over a different style of geological target that will be subject to PoW approvals, heritage surveys and cultural awareness training being undertaken by the Company and members of exploration team.

The Company remains committed to the Mallina Gold Project however at present, there is no clear timeline on conducting a drill program.

Epithermal Prospect

In September 2025, following the completion of a 1,091m Phase 1 AC drilling campaign, the Company reported 4m composite assay results at the Epithermal Prospect which confirmed gold values in drilling significantly exceeded those measured in surface soils⁷. Gold anomalous 1m split samples were also submitted for further analysis and have since been received confirming the results of the 4m composites with 1m intervals of importance highlighted in Figure 7 below (refer Table 4 for complete list of assays).



⁸ Refer ASX Announcement titled “Tin Can Gold Discovery Expands Scale” released 26 August 2025.

Figure 7: Epithermal Prospect – Significant 1m split sample assays from Phase 1 AC drilling programme.

To further investigate the uplift in gold anomalism seen in AC drilling as compared to surface sampling techniques, a Phase 2 AC drill campaign totalling of 982 metres (25KAC141-162) comprising 22 AC holes was subsequently completed. Similar to the results of Phase 1, there were often small amounts of quartz veining encountered with epithermal textures noted in many of those intervals.

Results from the Phase 2 campaign continues to confirm that, epithermal veinlets are near surface, gold is present and there is evidence of base metal mineralisation (supporting the model of a magmatic source) as represented by the maximum elemental 4m composite results below (refer to Table 5 for full is of assays):

Element	Max ppm
Au	0.139
Ag	3.6
Ba	1,897
Cu	743
Pb	2,642
Te	12.7
Zn	2,693

Table 1: Maximum 4m composite assays, per element, from Phase 2 AC drilling at the Epithermal Prospect.

Using the shallow AC results, RC drilling to depth (in order of ~200m) is being planned to investigate the epithermal system including high angle structures that may be present, including the more base metal rich areas.

Tin Can Prospect

In October 2025, the Company completed a 2,068m Phase 2 AC drilling campaign, comprising 24 holes (25KAC117-140) at the Tin Can Prospect. The aim of this program was to further investigate multiple coherent, sub-parallel gold zones, shallowly dipping to the south and plunging to the south-east as identified from geological logging and previously reported 4m composite assays from Phase 1 drilling⁸. Gold anomalous 1m split assays from Phase 1 were also sent for analysis and have since demonstrated they are broadly in line with those previously reported (Table 6).

Following receipt and interpretation of the Phase 2 AC drilling assays (Table 7), the Company also reports the following maximum 4m composite assays:

Element	Max ppm
Au	1.74
Ag	1.21
As	388
Cr	3,683
Cu	689
Pb	70
Pd	55 ppb
Zn	199

Table 2: Maximum 4m composite assays, per element, from Phase 2 AC drilling at the Tin Can Prospect.

Phase 2 drilling data continues to show that low level gold is present in possibly several zones that appear to dip moderately and in a southerly direction. Within this zone, there appears to be a

⁸ Refer ASX Announcement titled “Tin Can Gold Discovery Expands Scale” released 26 August 2025.

shoot direction toward the SSE across the plane in the overall data set where higher grade areas have been previously reported at Tin Can including several gold intersections at Tin Can West and two (including the new 4m @1.74 g/t Au this program) to the SE of Tin Can near the conglomerate contact. The remaining results are low tenor consistent with previous drilling.

Consideration of further work includes a small RC Drilling program of 3-4 holes to depths around 200m to ascertain the depth to fresh rock and look to intersect the down dip extension of the gold zone.

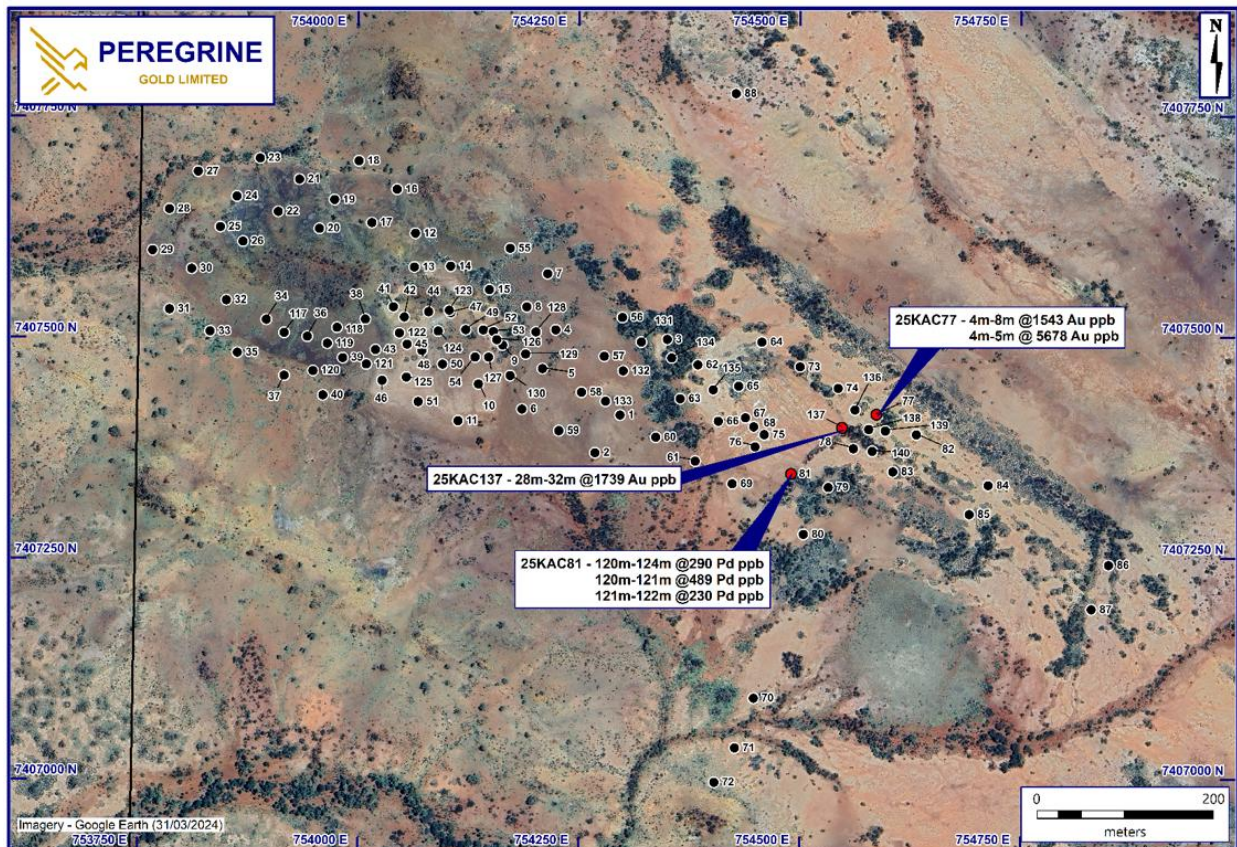


Figure 8: Tin Can Prospect – Significant 1m split sample assays from Phase 1 and 4m composites from Phase 2 AC drilling programme.

Technical Director of Peregrine, Mr. George Merhi, commented:

“The Company continues to advance a number of prospects it has generated with its greenfield exploration approach. While the end to end process of drill permitting and tenement grants can be lengthy we remain optimistic about the potential for discovery. In parallel we continue to generate new greenfield exploration opportunities to drive newsflow in the medium term. Once the appropriate approvals have been received shareholders can look forward to regular updates on a number of fronts”.

For further information, please contact:

George Merhi
Technical Director
Tel: +61 418 831 069

⁸ Refer ASX Announcement titled “Tin Can Gold Discovery Expands Scale” released 26 August 2025.

This ASX Announcement has been approved in accordance with the Company's published continuous disclosure policy and authorised for release by the Company Board of Directors.

COMPETENT PERSONS STATEMENT

The Information in this Report that relates to previously released Exploration Results for the Newman Gold & Iron Ore Project is extracted from Peregrine Gold Limited's ASX announcements titled "High Grade Channel Iron Discovery - Amendment" released on 23 July 2025, "Second High-Grade CID Prospect Identified at Newman" released on 26 November 2025, "Gold & Iron Ore Exploration Update" released 1 September 2025 and "Tin Can Gold Discovery Expands Scale" released 26 August 2025, which is available on <https://www.peregrinegold.com.au/investors/asx-announcements/>.

The Information in this Report that relates to previously released Exploration Results for the Pilgangoora North Lithium Project is extracted from Peregrine Gold Limited's ASX announcements titled "Pilgangoora North Lithium Project" released 25 March 2022, "Onground Exploration Commenced at Pilgangoora Lithium Project" released 6 October 2022 and "Anomalous Lithium, Tantalum and Gold Identified at Pilgangoora North" released 3 February 2023, which is available on <https://www.peregrinegold.com.au/investors/asx-announcements/>.

The information in this report which relates to exploration results is compiled by George Merhi, a Competent Person who is a Member of the Australasian Institute of Mining and Metallurgy. Mr Merhi is a Technical Director of Peregrine Gold Limited and a holder of shares, performance shares and options in Peregrine Gold Limited. Mr Merhi has sufficient experience that is relevant to the styles of mineralisation and types of deposit under consideration, and to the activity being undertaken, to qualify as a Competent Person as defined in the 2012 Edition of the "Australasian Code for Reporting of Exploration Results, Mineral Resources and Ore Reserves" (JORC Code). Mr Merhi consents to the inclusion in the report of the matters based on his information in the form and context in which it appears.

The Company confirms that it is not aware of any new information or data that materially affects the Exploration Results information included in this report from previous Company announcements results announced on the dates specified in the body of this report.

FORWARD LOOKING STATEMENT

Statements regarding plans with respect to Peregrine's projects are forward-looking statements. There can be no assurance that the Company's plans for development of its projects will proceed as currently expected. These forward-looking statements are based on the Company's expectations and beliefs concerning future events. Forward looking statements are necessarily subject to risks, uncertainties and other factors, many of which are outside the control of the Company, which could cause actual results to differ materially from such statements. The Company makes no undertaking to subsequently update or revise the forward-looking statements made in this announcement, to reflect the circumstances or events after the date of that announcement.



Table 3: Stream sampling results (Au only) at Pilgangoora North.

			Element	Au	Au-Rp1	Au	Au	Au-Rp1	Au	Au
			Units	ppb	ppb	ppb	ppb	ppm	ppb	ppb
			Detection	0.01	0.01	1	1	0.005	1	1
			Method	CN2000/MS	CN2000/MS	AR25/MS	FA25/MS	FA25/OE	AR25/MS	FA25/MS
Sample No	Easting	Northing	Fine	Fine	Fine	Fine	Fine	Fine	Coarse	Coarse
22PLST 1	700954	7677068	545.93		1				X	
22PLST 2	701671	7679514	73.6		3				13	
22PLST 3	700420	7678704	497.41		224				X	
22PLST 4	699775	7680574	0.95		2				X	
22PLST 5	700559	7678259	1002.02		478				3	
22PLST 6	700559	7678259	233.99		>2000		11.339		2	
22PLST 7	700678	7676820	211.26	263.62	1	213			X	1
22PLST 8	699816	7677173	63.35		1	3			X	1
22PLST 9	699849	7677174	380.86	13.27	457	3			1	1
22PLST 10	700091	7677193	1.38		2	2			X	2
22PLST 11	700095	7677240	0.45		X	1			X	1
22PLST 12	702013	7679300	42.1		5	6			8	6
22PLST 13	702006	7679335	2.07		2	2			1	X
22PLST 14	700066	7682021	0.47		X	1			X	X
22PLST 15	699666	7682168	0.32		X	X			X	X
22PLST 16	700019	7679979	0.23		X	1			X	X
22PLST 17	700880	7677080	42.71		1	3			X	1
22PLST 18	700837	7677012	103.34	458.83	2	5722			2	2
22PLST 19	700562	7676670	132.77	146.81	2	11			2	2
22PLST 20	700318	7676712	0.53		X	3			2	X
22PLST 21	699674	7677525	0.93		3	3			X	X
22PLST 22	701841	7679291	1.42		3	3			2	2
22PLST 23	701852	7679308	146.12	59.3	2	87			2	4
22PLST 24	700304	7681355	0.4		X	1			2	1
22PLST 25	700097	7681301	0.15		X	1			X	X
22PLST 26	699843	7680433	57.33		X	X			X	X
22PLST 27	700913	7680113	6.55		1	2			X	1
22PLST 28	699955	7679984	0.22		X	1			X	X
22PLST 29	701050	7679979	21.22		159	8			X	1
22PLST 30	701013	7679967	2.13		X	X			X	1
22PLST 31	701023	7680048	0.11		X	X			X	X
22PLST 32	702398	7679229	426.86	45.13	9	8			21	29
22PLST 33	702390	7679232	138.05		5	6			6	4
22PLST 34	700048	7679942	0.06		X	X			X	X
22PLST 35	699731	7679339	0.13		X	X			X	X

22PLST 36	699762	7679324	0.19		X	X		X	1
22PLST 37	700027	7680152	20.57		X	X		X	X
22PLST 38	702529	7678761	51.98		6	7		6	12
22PLST 39	702541	7678795	6.63	92.98	6	9		3	5
22PLST 40	702491	7680779	0.66		X	3		X	1
22PLST 41	702367	7678535	151.52		7	7		7	4
22PLST 42	702322	7678542	6.27		2	4		2	3
22PLST 43	700159	7678299	0.61		X	1		X	X
22PLST 45	702412	7678694	27.03		5	7		4	4
22PLST 46	702579	7678943	249.78	29.79	12	22		4	15
22PLST 47	700734	7678865	1.14		1	4		X	X
22PLST 48	699520	7678745	0.2		X	X		X	X
22PLST 49	699488	7678736	0.29		X	3		X	X
22PLST 50	700633	7678034	0.16		X	2		X	X
22PLST 51	701389	7678617	19.51		16	10		9	7
22PLST 52	701401	7678627	8.78		2	2		1	2
22PLST 53	701881	7679024	23.95		X	2		X	1
22PLST 54	701858	7679006	0.57		X	1		X	1
22PLST 55	700182	7678331	0.46		X	2		1	1
22PLST 56	702144	7679139	29.39	15.83	7	9		14	17
22PLST 57	701556	7679360	0.26		X	1		X	X
22PLST 58	700308	7678690	25.17		X	1		X	1
22PLST 59	700308	7678690	0.17		X	X		X	X
22PLST 60	700077	7678998	0.14		X	1		X	X
22PLST 61	700660	7678049	0.43		X	X		1	2
22PLST 62	700662	7678080	0.54		X	1		X	1
22PLST 63	700028	7678046	0.17		X	1		X	X
22PLST 64	699365	7678373	250.8	0.9	X	2		X	1
22PLST 65	699443	7678509	0.27		X	X		X	1
22PLST 66	700981	7677666	0.4		X	X		X	1
22PLST 67	700925	7677621	0.29		X	1		X	X
22PLST 68	700376	7677791	1.04		1	3		1	1
22PLST 69	700350	7677775	0.53		X	2		X	X
22PLST 70	700143	7678472	5.61		X	1		X	X
22PLST 71	699923	7678117	2.9		3	1		X	X
22PLST 72	699669	7679019	0.2		X	X		X	X
22PLST 73	702477	7679745	13.31		3	4		1	3
22PLST 74	700098	7679703	0.19		X	1		2	5

Table 4: Phase 1 AC Drilling Results (1m Split Assays) – Epithermal Prospect

										Element	Au						
										Units	ppm						
										Detection	0.005						
										Method	FA25/OE						
Hole Id	Easting	Northing	RL	Dip	Azi	Depth	Sample No	From	To	Au_ppm							
25KAC-089	756179.14	7408560.04	600	-60	0	49	3010	4	5	0.04							
							3011	5	6	0.006							
							3012	6	7	0.039							
							3013	7	8	0.076							
							3014	8	9	0.323							
							3015	9	10	0.069							
							3016	10	11	0.018							
							3017	11	12	0.017							
25KAC-090	755923.7874	7408454.112	600	-60	0	99	3117	0	1	0.007							
							3118	1	2	0.025							
							3119	2	3	X							
							3120	3	4	X							
25KAC-092	755921.4538	7408554.871	600	-60	0	63	3094	32	33	X							
							3095	33	34	0.116							
							3096	34	35	0.024							
							3097	35	36	0.022							
							3098	36	37	0.06							
							3099	37	38	X							
							3100	38	39	X							
							3101	39	40	X							
25KAC-093	755919.7799	7408505.921	600	-60	0	63	3102	16	17	X							
							3103	17	18	X							
							3104	18	19	0.013							
							3105	19	20	0.137							
							3109	24	25	X							
							3110	25	26	X							
							3111	26	27	0.01							
							3112	27	28	0.497							
							3113	32	33	0.007							
							3114	33	34	0.177							
25KAC-094	756078.0259	7408625.737	600	-60	0	37	3089	32	33	X							
							3090	33	34	X							
							3091	34	35	X							
							3092	35	36	X							
							3093	36	37	X							
							25KAC-095	756079.469	7408573.407	600	-60	0	47	3077	12	13	0.006
														3078	13	14	X
3079	14	15	0.011														
25KAC-095	756079.469	7408573.407	600	-60	0	47	3080	15	16	0.016							
							3081	16	17	0.013							
							3082	17	18	0.008							
							3083	18	19	0.012							
							3084	19	20	0.061							

							3085	20	21	0.038
							3086	21	22	0.007
							3087	22	23	X
							3088	23	24	X
25KAC-096	756081.2336	7408498.793	600	-60	0	43	3070	28	29	0.007
							3071	29	30	0.24
							3072	30	31	0.478
							3073	31	32	0.025
							3074	40	41	X
							3075	41	42	0.005
							3076	42	43	X
25KAC-097	756083.7815	7408450.882	600	-60	0	68	3062	48	49	X
							3063	49	50	0.008
							3064	50	51	0.016
							3065	51	52	0.012
							3066	52	53	0.012
							3067	53	54	0.036
							3068	54	55	0.014
							3069	55	56	0.024
25KAC-100	756182.542	7408525.847	600	-60	0	40	3018	4	5	X
							3019	5	6	X
							3020	6	7	X
							3021	7	8	X
							3022	28	29	0.006
							3023	29	30	0.026
							3024	30	31	0.028
							3025	31	32	0.015
							3026	32	33	X
							3027	33	34	X
							3028	34	35	0.052
							3029	35	36	0.017
25KAC-101	756179.4086	7408475.147	600	-60	0	40	3030	0	1	X
							3031	1	2	X
							3032	2	3	0.008
							3033	3	4	X
							3034	16	17	X
							3035	17	18	X
							3036	18	19	X
							3037	19	20	0.181
							3038	24	25	0.021
							3039	25	26	X
							3040	26	27	0.066
							3041	27	28	0.068
25KAC-102	756177.8749	7408422.318	600	-60	0	65	3042	20	21	0.009
							3043	21	22	0.006
							3044	22	23	0.054
							3045	23	24	0.006
							3046	60	61	X
							3047	61	62	X
							3048	62	63	X
							3049	63	64	0.027
							3050	64	65	0.391

25KAC-103	756178.8809	7408368.449	600	-60	0	48	3051	4	5	X
							3052	5	6	X
							3053	6	7	X
							3054	7	8	X
							3055	20	21	0.016
							3056	21	22	0.007
							3057	22	23	0.006
							3058	23	24	0.006



Table 5: Phase 2 AC Drilling Results (4m Composites) – Epithermal Prospect

									Element	Au	Ag	Ba	Cu	Pb	Te	Zn
									Units	ppm	ppm	ppm	ppm	ppm	ppm	ppm
									Detection	0.005	0.1	1	10	50	0.5	10
									Method	FA25/OE	4AH/MS	4AH/MS	4AH/OE	4AH/OE	4AH/MS	4AH/OE
Hole Id	Easting	Northing	RL	Dip	Azi	Depth	Sample No	From	To	Au ppm	Ag ppm	Ba ppm	Cu ppm	Pb ppm	Te ppm	Zn ppm
25KAC-141	756227	7408550	606	-60	0	39	AC - 555	0	4	0.011	0.6	405	215	346	X	427
							AC - 556	4	8	0.056	0.9	100	325	1034	5.2	629
							AC - 557	8	12	0.009	1.6	61	448	949	12.7	910
							AC - 558	12	16	0.063	3	256	415	2480	6	689
							AC - 559	16	20	0.032	0.7	198	360	1562	8.1	449
							AC - 560	20	24	0.009	1.7	567	213	743	6.9	229
							AC - 561	24	28	0.016	1.4	380	339	961	6.8	535
							AC - 562	28	32	0.024	0.9	758	392	872	0.5	1482
							AC - 563	32	36	X	0.4	1533	241	2225	X	2329
25KAC-142	756227	7408525	606	-60	0	47	AC - 564	36	39	X	0.1	558	414	272	X	787
							AC - 565	0	4	X	2.2	869	196	313	X	538
							AC - 566	4	8	X	1.6	742	167	779	X	417
							AC - 567	8	12	0.006	2.5	1112	167	213	X	685
							AC - 568	12	16	X	2.1	753	208	85	X	1578
							AC - 569	16	20	0.134	1.6	986	132	179	X	1752
							AC - 570	20	24	0.012	0.4	426	132	56	X	2359
							AC - 571	24	28	0.019	0.4	321	121	68	X	2067
							AC - 572	28	32	X	0.4	270	113	63	X	2535
25KAC-143	756227	7408501	607	-60	0	33	AC - 573	32	36	0.007	1.3	824	139	506	0.5	2693
							AC - 577	36	40	0.019	1.6	1155	154	1150	4.3	1971
							AC - 578	40	44	0.013	1	1141	86	226	X	1510
							AC - 579	44	47	X	0.2	283	105	X	X	554
							AC - 580	0	4	X	0.3	331	103	88	X	587
							AC - 581	4	8	X	0.2	285	130	103	X	719
							AC - 582	8	12	X	0.1	309	139	96	X	960
AC - 583	12	16	X	X	344	137	73	X	1110							
AC - 584	16	20	X	0.1	311	145	87	X	797							
AC - 585	20	24	0.006	X	261	174	76	X	666							
AC - 586	24	28	0.027	X	241	161	X	X	932							

4 March 2026

							AC - 587	28	33	X	X	233	83	67	X	629
							AC - 588	0	4	X	0.9	1290	92	X	X	607
25KAC-144	756227	7408471	607	-60	0	33	AC - 589	4	8	X	0.2	730	115	X	X	580
							AC - 590	8	12	0.005	0.1	337	119	X	X	759
							AC - 591	12	16	0.027	X	270	94	X	X	905
							AC - 592	16	20	0.014	0.1	379	90	X	X	801
							AC - 593	20	24	0.006	0.2	378	98	X	X	631
							AC - 594	24	28	0.007	X	257	71	54	X	685
							AC - 595	28	33	0.006	X	245	84	X	X	369
25KAC-145	756225	7408450	608	-60	0	39	AC - 596	0	4	X	X	119	149	X	X	171
							AC - 597	4	8	X	X	47	76	X	X	74
							AC - 598	8	12	X	X	35	127	X	X	103
							AC - 599	12	16	X	0.3	55	160	X	X	816
							AC - 600	16	21	0.006	X	54	118	X	X	238
							AC - 601	21	24	0.047	0.1	359	27	X	X	195
							AC - 602	24	28	0.007	0.2	488	37	X	X	511
							AC - 603	28	32	0.023	0.2	1435	46	X	X	560
							AC - 604	32	36	X	0.2	395	52	X	X	158
							AC - 605	36	40	0.008	X	1627	65	X	X	259
25KAC-146	756226	7408427	608	-60	0	53	AC - 606	0	4	0.008	0.3	711	124	X	X	627
							AC - 607	4	8	X	0.2	617	228	X	X	675
							AC - 608	8	12	X	0.2	463	306	X	X	395
							AC - 609	12	16	X	0.3	610	307	X	X	598
							AC - 610	16	20	X	0.2	640	327	X	X	455
							AC - 611	20	24	0.006	0.2	422	257	X	X	471
							AC - 612	24	28	X	0.2	415	186	X	X	414
							AC - 613	28	32	X	0.3	386	204	X	X	379
							AC - 614	32	36	0.007	0.3	612	231	X	X	397
							AC - 615	36	40	0.006	0.2	544	96	X	X	216
							AC - 616	40	44	X	0.2	509	10	X	X	228
							AC - 617	44	48	0.007	0.2	503	X	X	X	183
							AC - 618	48	53	X	0.2	369	212	X	X	146
25KAC-147	756224	7408405	609	-60	0	48	AC - 619	0	4	X	0.3	446	243	X	X	397
							AC - 620	4	8	X	X	236	176	X	X	385
							AC - 621	8	12	0.008	0.1	276	140	X	X	359
							AC - 622	12	16	0.007	X	440	120	X	X	369
							AC - 623	16	20	X	X	382	128	X	X	251
							AC - 624	20	24	X	X	424	79	X	X	197
							AC - 625	24	28	X	X	510	109	X	X	203

4 March 2026

							AC - 626	28	32	X	X	503	190	X	X	204
							AC - 627	32	36	0.044	0.3	537	123	X	X	263
							AC - 628	36	40	X	0.2	591	147	X	X	231
							AC - 629	40	44	0.008	X	460	167	X	X	147
							AC - 630	44	48	X	0.5	475	118	X	X	172
25KAC-148	756126	7408553	607	-60	0	41	AC - 631	0	4	X	0.5	521	376	111	X	600
							AC - 632	4	8	X	1	485	337	199	X	602
							AC - 633	8	12	X	1.1	621	268	X	X	401
							AC - 634	12	16	X	1.1	545	219	77	X	348
							AC - 635	16	20	0.01	0.9	505	209	70	X	614
							AC - 639	20	24	X	0.9	482	215	319	X	1043
							AC - 640	24	28	0.035	1.1	761	157	411	X	2130
							AC - 641	28	32	0.007	1.4	933	158	541	0.7	1337
							AC - 642	32	36	0.028	0.5	347	222	242	0.6	1914
							AC - 643	36	41	X	0.1	94	181	X	X	849
25KAC-149	756127	7408576	607	-60	0	39	AC - 644	0	4	0.005	3.6	936	243	2642	3.5	458
							AC - 645	4	8	X	0.6	86	315	630	7	298
							AC - 646	8	12	0.006	0.5	289	324	316	X	232
							AC - 647	12	16	X	0.4	571	398	X	X	325
							AC - 648	16	20	0.005	0.4	430	360	127	X	226
							AC - 649	20	24	0.01	0.7	1228	415	53	X	396
							AC - 650	24	28	X	0.5	864	205	298	X	608
							AC - 651	28	32	0.019	0.2	498	343	324	X	1040
							AC - 652	32	36	0.011	0.2	476	102	68	0.7	392
							AC - 653	36	39	0.009	0.2	422	24	X	X	175
25KAC-150	756126	7408527	608	-60	0	52	AC - 654	0	4	X	0.6	366	112	186	X	221
							AC - 655	4	8	X	0.6	298	126	208	X	170
							AC - 656	8	12	X	0.4	227	156	X	X	142
							AC - 657	12	16	X	0.3	300	225	X	X	199
							AC - 658	16	20	X	0.3	364	261	X	X	227
							AC - 659	20	24	X	1	482	370	90	X	357
							AC - 660	24	28	0.018	0.5	460	252	105	X	350
							AC - 661	28	32	0.041	0.8	911	210	X	X	862
							AC - 662	32	36	0.01	0.2	681	143	X	X	948
							AC - 663	36	40	X	X	381	79	X	X	1073
							AC - 664	40	44	X	X	266	88	X	X	697
							AC - 665	44	48	X	0.1	331	72	X	X	448
							AC - 666	48	52	X	1	223	95	93	X	352
25KAC-151	756126	7408503	608	-60	0	53	AC - 667	0	4	X	X	152	70	62	X	347

4 March 2026

							AC - 668	4	8	X	0.5	262	80	263	X	192
							AC - 669	8	12	X	0.7	463	598	165	X	800
							AC - 670	12	16	X	0.3	405	196	342	X	433
							AC - 671	16	20	0.006	0.6	575	187	86	X	554
							AC - 672	20	24	0.007	0.4	403	189	510	X	621
							AC - 673	24	28	X	0.2	840	176	50	X	705
							AC - 677	28	32	0.009	0.2	615	156	X	X	2124
							AC - 678	32	36	0.018	0.2	636	130	X	X	862
							AC - 679	36	40	X	0.5	607	120	X	X	1054
							AC - 680	40	44	X	1.2	676	142	X	X	692
							AC - 681	44	48	X	0.3	243	101	X	X	643
							AC - 682	48	53	X	0.1	479	72	X	X	335
25KAC-152	756126	7408477	608	-60	0	48	AC - 683	0	4	0.012	0.2	134	47	114	X	185
							AC - 684	4	8	X	X	43	34	59	X	138
							AC - 685	8	12	0.006	X	22	32	86	X	151
							AC - 686	12	16	X	X	20	43	95	X	132
							AC - 687	16	20	X	X	24	89	142	X	202
							AC - 688	20	24	X	X	97	100	202	X	142
							AC - 689	24	28	0.048	1.2	1602	161	217	X	240
							AC - 690	28	32	0.012	0.3	770	212	X	X	648
							AC - 691	32	36	0.008	0.2	596	149	X	X	895
							AC - 692	36	40	0.009	0.2	749	102	X	X	696
							AC - 693	40	44	X	0.1	250	106	X	X	592
							AC - 694	44	48	X	0.1	241	91	X	X	359
25KAC-153	756126	7408453	608	-60	0	57	AC - 695	0	4	X	0.3	1028	220	64	X	340
							AC - 696	4	8	X	0.4	860	274	106	X	565
							AC - 697	8	12	X	0.3	1032	133	142	X	327
							AC - 698	12	16	X	0.2	861	72	87	X	253
							AC - 699	16	20	X	0.4	820	84	84	X	318
							AC - 700	20	24	X	0.4	1061	106	121	X	432
							AC - 701	24	28	0.057	0.6	479	66	X	X	166
							AC - 702	28	32	0.071	0.6	941	64	173	X	339
							AC - 703	32	36	X	0.3	820	60	X	X	276
							AC - 704	36	40	X	0.6	1211	80	X	X	257
							AC - 705	40	44	0.022	0.4	640	61	X	X	247
							AC - 706	44	48	0.019	0.4	698	42	141	X	318
							AC - 707	48	52	0.023	0.2	1414	70	91	X	275
							AC - 708	52	57	X	0.5	545	88	X	X	518
25KAC-154	756002	7408600	607	-60	0	45	AC - 709	0	4	X	0.2	221	376	X	X	481

4 March 2026

							AC - 710	4	8	X	0.8	240	403	X	X	449
							AC - 711	8	12	X	0.4	888	345	X	X	432
							AC - 712	12	16	X	0.5	837	182	X	X	647
							AC - 713	16	20	0.015	0.6	1245	182	X	X	979
							AC - 714	20	24	X	0.4	561	447	X	X	980
							AC - 715	24	28	0.019	0.5	1238	64	X	0.5	539
							AC - 719	28	32	0.007	0.3	1897	86	103	0.5	563
							AC - 720	32	36	X	0.2	793	142	X	X	713
							AC - 721	36	40	0.007	0.2	542	346	161	X	753
							AC - 722	40	45	X	0.3	222	105	115	X	820
25KAC-155	756002	7408576	607	-60	0	37	AC - 723	0	4	X	0.9	837	158	69	X	740
							AC - 724	4	8	X	0.8	1048	155	X	X	821
							AC - 725	8	12	X	0.7	1019	112	X	X	821
							AC - 726	12	16	0.017	0.4	1331	27	108	X	1362
							AC - 727	16	20	0.021	0.4	1876	63	X	X	1967
							AC - 728	20	24	X	0.2	846	37	X	X	1016
							AC - 729	24	28	0.01	0.4	215	417	X	X	864
							AC - 730	28	32	X	0.1	104	X	X	X	413
							AC - 731	32	37	X	0.3	136	13	X	X	381
25KAC-156	756001	7408551	608	-60	0	34	AC - 732	0	4	X	0.5	550	175	X	X	465
							AC - 733	4	8	0.022	0.7	418	263	X	X	751
							AC - 734	8	12	X	0.7	661	261	X	X	1423
							AC - 735	12	16	0.12	0.6	889	204	X	X	1662
							AC - 736	16	20	0.139	0.3	692	214	X	X	1507
							AC - 737	20	24	0.018	0.2	984	119	X	X	1328
							AC - 738	24	28	X	0.1	270	263	X	X	823
							AC - 739	28	32	X	0.1	166	67	X	X	727
							AC - 740	32	34	0.014	X	175	40	X	X	825
25KAC-157	756001	7408525	607	-60	0	35	AC - 741	0	4	X	0.1	176	186	X	X	344
							AC - 742	4	8	X	0.3	230	125	X	X	497
							AC - 743	8	12	X	0.2	376	114	X	X	611
							AC - 744	12	16	X	0.2	542	127	X	X	601
							AC - 745	16	20	0.015	0.2	956	180	X	X	832
							AC - 746	20	24	0.007	0.3	868	155	216	X	573
							AC - 747	24	28	X	0.2	499	134	232	X	1042
							AC - 748	28	32	0.007	0.1	241	84	X	X	1283
							AC - 749	32	35	X	0.2	246	124	66	X	1697
25KAC-158	756001	7408500	607	-60	0	36	AC - 750	0	4	X	X	1173	165	52	X	838
							AC - 751	4	8	X	1.2	397	191	X	X	548

4 March 2026

							AC - 752	8	12	X	X	557	188	X	X	433
							AC - 753	12	16	0.014	X	514	221	X	X	369
							AC - 754	16	20	X	0.1	1079	254	X	X	776
							AC - 755	20	24	X	X	670	133	X	X	647
							AC - 756	24	28	0.046	X	738	100	90	X	863
							AC - 757	28	32	0.021	X	234	305	X	X	814
							AC - 758	32	36	0.005	X	231	195	X	X	863
25KAC-159	756001	7408476	607	-60	0	52	AC - 759	0	4	0.015	X	242	168	X	X	380
							AC - 760	4	8	X	0.1	476	318	X	X	464
							AC - 764	8	12	X	0.3	820	400	X	X	331
							AC - 765	12	16	X	0.2	325	245	217	X	113
							AC - 766	16	20	X	0.2	595	313	X	X	239
							AC - 767	20	24	X	0.5	589	432	X	X	165
							AC - 768	24	28	X	0.3	746	384	X	X	231
							AC - 769	28	32	0.009	0.2	505	284	X	X	185
							AC - 770	32	36	0.011	0.2	560	333	X	X	606
							AC - 771	36	40	X	0.2	693	359	X	X	1292
							AC - 772	40	44	0.008	0.3	670	557	X	X	456
							AC - 773	44	48	0.007	0.3	798	279	56	X	456
							AC - 774	48	52	0.012	0.2	296	69	X	X	496
25KAC-160	755878	7408573	607	-60	0	37	AC - 775	0	4	X	X	443	164	X	X	152
							AC - 776	4	8	X	X	216	206	X	X	179
							AC - 777	8	12	X	X	448	258	X	X	411
							AC - 778	12	16	X	0.1	1021	171	X	X	252
							AC - 779	16	20	0.008	X	754	52	X	X	305
							AC - 780	20	24	0.013	0.1	383	743	X	X	1255
							AC - 781	24	28	0.012	X	508	20	X	X	421
							AC - 782	28	32	0.016	X	431	21	X	X	246
							AC - 783	32	37	X	X	872	82	X	X	487
25KAC-161	755877	7408550	607	-60	0	54	AC - 784	0	4	X	X	242	161	X	X	163
							AC - 785	4	8	X	X	192	156	X	X	157
							AC - 786	8	12	X	0.1	300	200	X	X	137
							AC - 787	12	16	X	0.2	344	233	X	X	266
							AC - 788	16	20	X	X	549	223	X	X	306
							AC - 789	20	24	X	0.1	480	239	X	X	747
							AC - 790	24	28	X	X	563	192	X	X	463
							AC - 791	28	32	X	X	604	200	X	X	606
							AC - 792	32	36	0.005	X	952	180	X	X	407
							AC - 793	36	40	X	0.4	781	68	X	X	238

ASX ANNOUNCEMENT

4 March 2026

							AC - 794	40	44	0.006	X	643	X	X	X	349
							AC - 795	44	48	0.011	X	718	X	X	X	225
							AC - 796	48	52	X	X	1092	66	X	X	160
							AC - 797	52	54	X	X	396	193	X	X	144
25KAC-162	755876	7408525	607	-60	0	70	AC - 798	0	4	X	X	142	158	X	X	205
							AC - 799	4	8	X	0.1	103	254	X	X	172
							AC - 800	8	12	X	X	111	155	X	X	147
							AC - 801	12	16	X	0.1	286	251	X	X	391
							AC - 802	16	20	X	0.1	691	263	X	X	390
							AC - 803	20	24	X	X	516	167	X	X	387
							AC - 804	24	28	0.009	X	587	186	X	X	491
							AC - 805	28	32	0.069	0.1	725	206	74	X	533
							AC - 806	32	36	0.008	0.1	479	189	X	X	345
							AC - 807	36	40	0.005	X	345	167	X	X	296
							AC - 808	40	44	X	X	474	171	X	X	280
							AC - 809	44	78	X	X	462	196	X	X	265
							AC - 810	48	52	X	X	381	188	X	X	317
							AC - 811	52	56	X	X	360	147	X	X	399
							AC - 812	56	60	X	X	548	133	X	X	360
							AC - 813	60	64	0.012	0.2	1269	28	X	X	318
							AC - 814	64	68	X	0.3	1135	11	X	X	323
							AC - 815	68	70	X	0.3	299	126	X	X	390

Table 6: Phase 1 AC Drilling Results (1m Split Assays) – Tin Can Prospect

Hole Id	Easting	Northing	RL	Dip	Azi	Depth	Sample No	From	Element	Au	Au-Rp1
									Units	ppb	ppb
									Detection	1	1
									Method	AR25/MS	AR25/MS
									To	Au_ppb	Au-Rp1_ppb
25KAC-001	754296.289	7407412.47	600	-60	0	86	25KAC 2246	40	41	11	
							25KAC 2247	41	42	5	
							25KAC 2248	42	43	86	
							25KAC 2249	43	44	4	
							25KAC 2250	72	73	1	
							25KAC 2251	73	74	2	
							25KAC 2252	74	75	58	
25KAC-003	754350.019	7407497.98	600	-60	0	120	25KAC 2253	75	76	8	
							25KAC 2254	44	45	1	
							25KAC 2255	45	46	296	
							25KAC 2256	46	47	2	
							25KAC 2257	47	48	4	
							25KAC 2258	108	109	4	
							25KAC 2259	109	110	6	
25KAC-004	754223.717	7407508.91	600	-60	0	105	25KAC 2260	110	111	15	
							25KAC 2261	111	112	35	
							25KAC 2262	12	13	6	
							25KAC 2263	13	14	5	
							25KAC 2264	14	15	26	
							25KAC 2265	15	16	109	
							25KAC 2266	36	37	X	
25KAC-005	754208.545	7407465.07	600	-60	0	67	25KAC 2267	37	38	15	
							25KAC 2268	38	39	48	
							25KAC 2269	39	40	322	
							25KAC 2270	40	41	24	
							25KAC 2271	41	42	30	
							25KAC 2272	42	43	51	
							25KAC 2273	43	44	18	
25KAC-007	754214.49	7407572.45	600	-60	0	120	25KAC 2274	4	5	X	
							25KAC 2275	5	6	2	
							25KAC 2276	6	7	27	
							25KAC 2277	7	8	8	
							25KAC 2278	48	49	34	
							25KAC 2279	49	50	33	
							25KAC 2280	50	51	20	
25KAC-007	754214.49	7407572.45	600	-60	0	120	25KAC 2281	51	52	15	
							25KAC 2282	60	61	2	
							25KAC 2283	61	62	2	
							25KAC 2284	62	63	3	
							25KAC 2285	63	64	2	
							25KAC 2286	64	65	3	
							25KAC 2287	65	66	3	
25KAC-007	754214.49	7407572.45	600	-60	0	120	25KAC 2288	66	67	2	
							25KAC 2289	67	68	10	
							25KAC 2290	68	69	76	

							25KAC 2291	69	70	31	
							25KAC 2292	70	71	7	
							25KAC 2293	71	72	7	
							25KAC 2294	108	109	3	
							25KAC 2295	109	110	254	
							25KAC 2296	110	111	2	
							25KAC 2297	111	112	2	
							25KAC 2298	112	113	2	
							25KAC 2299	113	114	X	
							25KAC 2300	114	115	3	
							25KAC 2301	115	116	1	
25KAC-008	754191.039	7407534.85	600	-60	0	76	25KAC 2302	20	21	74	
							25KAC 2303	21	22	6	
							25KAC 2304	22	23	135	
							25KAC 2305	23	24	9	
25KAC-009	754163.399	7407491.78	600	-60	0	41	25KAC 2309	16	17	29	
							25KAC 2310	17	18	154	
							25KAC 2311	18	19	19	
							25KAC 2312	19	20	7	
							25KAC 2313	28	29	60	
							25KAC 2314	29	30	X	
							25KAC 2315	30	31	5	
							25KAC 2316	31	32	1	
							25KAC 2317	32	33	5	
							25KAC 2318	33	34	74	
							25KAC 2319	34	35	30	
							25KAC 2320	35	36	6	
							25KAC 2321	36	37	89	
							25KAC 2322	37	38	2	
							25KAC 2323	38	39	3	
							25KAC 2324	39	40	15	
							25KAC 2325	40	41	233	
25KAC-011	754112.934	7407406.11	600	-60	0	96	25KAC 2326	36	37	X	
							25KAC 2327	37	38	432	
							25KAC 2328	38	39	5	
							25KAC 2329	39	40	13	
							25KAC 2330	72	73	148	
							25KAC 2331	73	74	1	
							25KAC 2332	74	75	2	
							25KAC 2333	75	76	18	
25KAC-013	754063.484	7407580.05	600	-60	0	84	25KAC 2334	40	41	10	
							25KAC 2335	41	42	20	
							25KAC 2336	42	43	31	
							25KAC 2337	43	44	19	
							25KAC 2338	44	45	9	
							25KAC 2339	45	46	4	
							25KAC 2340	46	47	115	
							25KAC 2341	47	48	52	
							25KAC 2342	80	81	4	
							25KAC 2343	81	82	7	
							25KAC 2344	82	83	2	
							25KAC 2345	83	84	2	

25KAC-014	754104.812	7407580.89	600	-60	0	96	25KAC 2346	48	49	26
							25KAC 2347	49	50	18
							25KAC 2348	50	51	37
							25KAC 2349	51	52	7
25KAC-015	754148.63	7407554.53	600	-60	0	61	25KAC 2350	0	1	13
							25KAC 2351	1	2	54
							25KAC 2352	2	3	27
							25KAC 2353	3	4	16
25KAC-016	754044.04	7407668.03	600	-60	0	64	25KAC 2354	28	29	5
							25KAC 2355	29	30	188
							25KAC 2356	30	31	4
							25KAC 2357	31	32	4
							25KAC 2361	56	57	35
							25KAC 2362	57	58	8
							25KAC 2363	58	59	3
							25KAC 2364	59	60	13
25KAC-018	754001.137	7407700.36	600	-60	0	71	25KAC 2365	28	29	44
							25KAC 2366	29	30	21
							25KAC 2367	30	31	22
							25KAC 2368	31	32	37
25KAC-019	753973.282	7407656.4	600	-60	0	62	25KAC 2369	36	37	26
							25KAC 2370	37	38	26
							25KAC 2371	38	39	29
							25KAC 2372	39	40	6
25KAC-020	753956.049	7407623.79	600	-60	0	78	25KAC 2373	56	57	9
							25KAC 2374	57	58	131
							25KAC 2375	58	59	22
							25KAC 2376	59	60	7
25KAC-021	753933.595	7407679.58	600	-60	0	26	25KAC 2377	12	13	1
							25KAC 2378	13	14	14
							25KAC 2379	14	15	478
							25KAC 2380	15	16	19
							25KAC 2381	24	25	53
							25KAC 2382	25	26	24
25KAC-023	753889.018	7407703.5	600	-60	0	66	25KAC 2383	12	13	3
							25KAC 2384	13	14	88
							25KAC 2385	14	15	12
							25KAC 2386	15	16	9
							25KAC 2387	16	17	10
							25KAC 2388	17	18	7
							25KAC 2389	18	19	49
							25KAC 2390	19	20	76
25KAC-024	753862.912	7407660.52	600	-60	0	84	25KAC 2391	16	17	39
							25KAC 2392	17	18	79
							25KAC 2393	18	19	145
							25KAC 2394	19	20	3
							25KAC 2395	32	33	16
							25KAC 2396	33	34	2
							25KAC 2397	34	35	1
							25KAC 2398	35	36	109
							25KAC 2399	40	41	X
							25KAC 2400	41	42	47

							25KAC 2401	42	43	64	
							25KAC 2402	43	44	13	
25KAC-026	753869.599	7407609.43	600	-60	0	54	25KAC 2406	52	53	12	
							25KAC 2407	53	54	104	
25KAC-029	753767.276	7407599.68	600	-60	0	94	25KAC 2408	44	45	1	
							25KAC 2409	45	46	3	
							25KAC 2410	46	47	3	
							25KAC 2411	47	48	285	
25KAC-033	753832.361	7407507.79	600	-60	0	100	25KAC 2412	32	33	116	
							25KAC 2413	33	34	67	
							25KAC 2414	34	35	5	
							25KAC 2415	35	36	2	
							25KAC 2416	48	49	205	
							25KAC 2417	49	50	36	
							25KAC 2418	50	51	34	
							25KAC 2419	51	53	9	
25KAC-034	753895.887	7407520.99	600	-60	0	111	25KAC 2420	0	1	9	
							25KAC 2421	1	2	15	
							25KAC 2422	2	3	2	
							25KAC 2423	3	4	2	
							25KAC 2424	4	5	X	
							25KAC 2425	5	6	20	
							25KAC 2426	6	7	23	
							25KAC 2427	7	8	5	
							25KAC 2428	12	13	17	
							25KAC 2429	13	14	21	
							25KAC 2430	14	15	196	
							25KAC 2431	15	16	73	
							25KAC 2432	16	17	82	
							25KAC 2433	17	18	4	
							25KAC 2434	18	19	41	
							25KAC 2435	19	20	25	
							25KAC 2436	32	33	18	
							25KAC 2437	33	34	12	
							25KAC 2438	34	35	73	
							25KAC 2439	35	36	11	
							25KAC 2440	48	49	5	
							25KAC 2441	49	50	X	
							25KAC 2442	50	51	19	
							25KAC 2443	51	52	78	
							25KAC 2444	60	61	4	
							25KAC 2445	61	62	1	
							25KAC 2446	62	63	5	
							25KAC 2447	63	64	3	
							25KAC 2448	68	69	X	
							25KAC 2449	69	70	52	
							25KAC 2450	70	71	36	
							25KAC 2451	71	72	3	
25KAC-035	753863.027	7407483.56	600	-60	0	87	25KAC 2452	20	21	6	
							25KAC 2453	21	22	2	
							25KAC 2454	22	23	X	
							25KAC 2455	23	24	2	

							25KAC 2456	56	57	1	
							25KAC 2457	57	58	10	
							25KAC 2458	58	59	12	
							25KAC 2459	59	60	27	
25KAC-036	753942.385	7407501.69	600	-60	0	128	25KAC 2463	28	29	12	
							25KAC 2464	29	30	15	
							25KAC 2465	30	31	30	
							25KAC 2466	31	32	570	
							25KAC 2467	36	37	13	
							25KAC 2468	37	38	6	
							25KAC 2469	38	39	20	
							25KAC 2470	39	40	263	
							25KAC 2471	40	41	42	
							25KAC 2472	41	42	185	
							25KAC 2473	42	43	61	
							25KAC 2474	43	44	53	
							25KAC 2475	44	45	2	
							25KAC 2476	45	46	63	
							25KAC 2477	46	47	2	
							25KAC 2478	47	48	17	
							25KAC 2479	48	49	48	
							25KAC 2480	49	50	27	
							25KAC 2481	50	51	2	
							25KAC 2482	51	52	14	
							25KAC 2483	52	53	31	
							25KAC 2484	53	54	45	
							25KAC 2485	54	55	59	
							25KAC 2486	55	56	2	
							25KAC 2487	112	113	49	
							25KAC 2488	113	114	3	
							25KAC 2489	114	115	14	
							25KAC 2490	115	116	3	
25KAC-037	753915.957	7407457.48	600	-60	0	90	25KAC 2491	56	57	78	
							25KAC 2492	57	58	2	
							25KAC 2493	58	59	2	
							25KAC 2494	59	60	25	
25KAC-038	753982.468	7407477.5	600	-60	0	111	25KAC 2495	16	17	73	
							25KAC 2496	17	18	36	
							25KAC 2497	18	19	5	
							25KAC 2498	19	20	9	
							25KAC 2499	20	21	8	
							25KAC 2500	21	22	9	
							25KAC 2501	22	23	3	
							25KAC 2502	23	24	36	
							25KAC 2503	28	29	17	
							25KAC 2504	29	30	6	
							25KAC 2505	30	31	10	
							25KAC 2506	31	32	6	
							25KAC 2510	40	41	51	
							25KAC 2511	41	42	24	
							25KAC 2512	42	43	63	
							25KAC 2513	43	44	16	

							25KAC 2514	44	45	7	
							25KAC 2515	45	46	137	
							25KAC 2516	46	47	5	
							25KAC 2517	47	48	2	
							25KAC 2518	56	57	X	
							25KAC 2519	57	58	34	
							25KAC 2520	58	59	X	
							25KAC 2521	59	60	1	
							25KAC 2522	68	69	3	
							25KAC 2523	69	70	142	
							25KAC 2524	70	71	9	
							25KAC 2525	71	72	2	
25KAC-039	753982.468	7407477.5	600	-60	0	135	25KAC 2526	48	49	2	
							25KAC 2527	49	50	3	
							25KAC 2528	50	51	5	
							25KAC 2529	51	52	433	
							25KAC 2530	52	53	106	
							25KAC 2531	53	54	21	
							25KAC 2532	54	55	16	
							25KAC 2533	55	56	5	
							25KAC 2534	56	57	96	
							25KAC 2535	57	58	53	
							25KAC 2536	58	59	61	
							25KAC 2537	59	60	9	
							25KAC 2538	60	61	14	
							25KAC 2539	61	62	24	
							25KAC 2540	62	63	9	
							25KAC 2541	63	64	13	
							25KAC 2542	132	133	30	
							25KAC 2543	133	134	15	
							25KAC 2544	134	135	45	
25KAC-040	753959.85	7407435.23	600	-60	0	92	25KAC 2545	64	65	9	
							25KAC 2546	65	66	35	
							25KAC 2547	66	67	1	
							25KAC 2548	67	68	9	
25KAC-041	754039.901	7407535.13	600	-60	0	108	25KAC 2549	12	13	75	
							25KAC 2550	13	14	12	
							25KAC 2551	14	15	6	
							25KAC 2552	15	16	26	
							25KAC 2556	24	25	6	
							25KAC 2557	25	26	76	
							25KAC 2558	26	27	2	
							25KAC 2559	27	28	5	
							25KAC 2560	28	29	4	
							25KAC 2561	29	30	2	
							25KAC 2562	30	31	32	
							25KAC 2563	31	32	197	
							25KAC 2564	32	33	14	
							25KAC 2565	33	34	11	
							25KAC 2566	34	35	77	
							25KAC 2567	35	36	104	
							25KAC 2568	36	37	289	

							25KAC 2569	37	38	46	
							25KAC 2570	38	39	124	
							25KAC 2571	39	40	5	
							25KAC 2572	72	72	2	
							25KAC 2573	73	74	4	
							25KAC 2574	74	75	19	
							25KAC 2575	75	76	8	
							25KAC 2576	80	81	2	
							25KAC 2577	81	82	178	
							25KAC 2578	82	83	12	
							25KAC 2579	84	85	6	
							25KAC 2580	104	105	3	
							25KAC 2581	105	106	37	
							25KAC 2582	106	107	66	
							25KAC 2583	107	108	8	
25KAC-042	754052.179	7407523.51	600	-60	0	108	25KAC 2584	24	25	2	
							25KAC 2585	25	26	20	
							25KAC 2586	26	27	10	
							25KAC 2587	27	28	60	
							25KAC 2588	44	45	126	
							25KAC 2589	45	46	133	
							25KAC 2590	46	47	94	
							25KAC 2591	47	48	2	
							25KAC 2592	84	85	2	
							25KAC 2593	85	86	76	
							25KAC 2594	86	87	18	
							25KAC 2595	87	88	7	
							25KAC 2596	88	89	45	
							25KAC 2597	89	90	11	
							25KAC 2598	90	91	36	
							25KAC 2599	91	92	7	
25KAC-043	754019.533	7407486.51	600	-60	0	102	25KAC 2600	36	37	45	
							25KAC 2601	37	38	23	
							25KAC 2602	38	39	4	
							25KAC 2603	39	40	2	
							25KAC 2604	40	41	6	
							25KAC 2605	41	42	78	
							25KAC 2606	42	43	20	
							25KAC 2610	43	44	11	
							25KAC 2611	44	45	9	
							25KAC 2612	45	46	31	
							25KAC 2613	46	47	6	
							25KAC 2614	47	48	7	
							25KAC 2615	88	89	X	
							25KAC 2616	89	90	15	
							25KAC 2617	90	91	38	
							25KAC 2618	91	92	7	
							25KAC 2619	100	101	478	
							25KAC 2620	101	102	42	
25KAC-044	754079.786	7407529.35	600	-60	0	114	25KAC 2621	12	13	11	
							25KAC 2622	13	14	2	
							25KAC 2623	14	15	35	

							25KAC 2624	15	16	66	
							25KAC 2625	20	21	24	
							25KAC 2626	21	22	79	
							25KAC 2627	22	23	18	
							25KAC 2628	23	24	2	
							25KAC 2629	28	29	19	
							25KAC 2630	29	30	17	
							25KAC 2631	30	31	16	
							25KAC 2632	31	32	333	
							25KAC 2633	72	73	1	
							25KAC 2634	73	74	2	
							25KAC 2635	74	75	2	
							25KAC 2636	75	76	67	
							25KAC 2637	108	109	27	
							25KAC 2638	109	110	8	
							25KAC 2639	110	111	8	
							25KAC 2640	111	112	15	
25KAC-045	754055.221	7407492.65	600	-60	0	99	25KAC 2641	0	1	4	
							25KAC 2642	1	2	2	
							25KAC 2643	2	3	2	
							25KAC 2644	3	4	X	
							25KAC 2645	40	41	1	
							25KAC 2646	41	42	13	
							25KAC 2647	42	43	1	
							25KAC 2648	43	44	57	
							25KAC 2649	48	49	10	
							25KAC 2650	49	50	5	
							25KAC 2651	50	51	137	
							25KAC 2652	51	52	2	
							25KAC 2653	60	61	40	
							25KAC 2654	61	62	2	
							25KAC 2655	62	63	3	
							25KAC 2656	63	64	13	
25KAC-046	754027.012	7407451.81	600	-60	0	93	25KAC 2657	8	9	X	
							25KAC 2658	9	10	X	
							25KAC 2659	10	11	X	
							25KAC 2660	11	12	X	
							25KAC 2661	16	17	X	
							25KAC 2662	17	18	X	
							25KAC 2663	18	19	X	
							25KAC 2664	19	20	1	
							25KAC 2665	20	21	X	
							25KAC 2666	21	22	X	
							25KAC 2667	22	23	X	
							25KAC 2668	23	24	X	
							25KAC 2669	28	29	2	
							25KAC 2670	29	30	X	
							25KAC 2671	30	31	1	
							25KAC 2672	31	32	X	
							25KAC 2673	32	33	X	
							25KAC 2674	33	34	2	
							25KAC 2675	34	35	25	

								25KAC 2676	35	36	X	
								25KAC 2677	64	65	10	
								25KAC 2678	65	66	8	
								25KAC 2679	66	67	20	
								25KAC 2680	67	68	29	
								25KAC 2681	68	69	40	
								25KAC 2682	69	70	26	
								25KAC 2683	70	71	22	
								25KAC 2684	71	72	43	
								25KAC 2685	72	73	19	
								25KAC 2686	73	74	29	
								25KAC 2687	74	75	30	
								25KAC 2688	75	76	20	
								25KAC 2689	76	77	24	
								25KAC 2690	77	78	14	
								25KAC 2691	78	79	30	
								25KAC 2692	79	80	30	
								25KAC 2693	80	81	21	
								25KAC 2694	81	82	47	
								25KAC 2695	82	83	28	
								25KAC 2696	83	84	38	
								25KAC 2697	84	85	32	
								25KAC 2698	85	86	83	
								25KAC 2699	86	87	23	
								25KAC 2700	87	88	24	
								25KAC 2701	88	89	25	
								25KAC 2702	89	90	38	
								25KAC 2703	90	91	44	
								25KAC 2704	91	92	11	
								25KAC 2705	92	93	16	
25KAC-047	754104.614	7407528.14	600	-60	0	78		25KAC 2709	16	17	82	
								25KAC 2710	17	18	116	
								25KAC 2711	18	19	120	
								25KAC 2712	19	20	120	
								25KAC 2713	20	21	4	
								25KAC 2714	21	22	8	
								25KAC 2715	22	23	52	
								25KAC 2716	23	24	229	187
								25KAC 2717	32	33	30	49
								25KAC 2718	33	34	2	
								25KAC 2719	34	35	9	
								25KAC 2720	35	36	4	
								25KAC 2721	36	37	6	
								25KAC 2722	37	38	39	
								25KAC 2723	38	39	45	
								25KAC 2724	39	40	108	
								25KAC 2725	44	45	X	
								25KAC 2726	45	46	1	
								25KAC 2727	46	47	482	397
								25KAC 2728	48	48	4	
25KAC-048	754072.076	7407485.6	600	-60	0	49		25KAC 2729	16	17	X	
								25KAC 2730	17	18	X	

							25KAC 2731	18	19	3	
							25KAC 2732	19	20	4	
25KAC-049	754121.666	7407509.01	600	-60	0	111	25KAC 2733	20	21	15	
							25KAC 2734	21	22	84	
							25KAC 2735	22	23	134	
							25KAC 2736	23	24	226	181
							25KAC 2737	24	25	20	
							25KAC 2738	25	26	65	
							25KAC 2739	26	27	21	
							25KAC 2740	27	28	25	
							25KAC 2741	32	33	10	
							25KAC 2742	33	34	195	
							25KAC 2743	34	35	6	
							25KAC 2744	35	36	146	
							25KAC 2745	44	45	5	
							25KAC 2746	45	46	67	
							25KAC 2747	46	47	18	
							25KAC 2748	47	48	25	
							25KAC 2749	48	49	44	
							25KAC 2750	49	50	173	
							25KAC 2751	50	51	177	
							25KAC 2752	51	52	8	
							25KAC 2756	80	81	103	
							25KAC 2757	81	82	38	
							25KAC 2758	82	83	7	
							25KAC 2759	83	84	2	
							25KAC 2760	88	89	27	
							25KAC 2761	89	90	60	
							25KAC 2762	90	91	13	
							25KAC 2763	91	92	3	
25KAC-051	754067.805	7407427.61	600	-60	0	83	25KAC 2764	32	33	1	
							25KAC 2765	33	34	1	
							25KAC 2766	34	35	X	
							25KAC 2767	35	36	1	
25KAC-052	754141.704	7407508.77	600	-60	0	60	25KAC 2768	0	1	20	
							25KAC 2769	1	2	14	
							25KAC 2770	2	3	3	
							25KAC 2771	3	4	3	
							25KAC 2772	8	9	11	
							25KAC 2773	9	10	80	
							25KAC 2774	10	11	63	
							25KAC 2775	11	12	22	
							25KAC 2776	24	25	236	
							25KAC 2777	25	26	57	
							25KAC 2778	26	27	11	
							25KAC 2779	27	28	15	
							25KAC 2780	40	41	17	
							25KAC 2781	41	42	7	
							25KAC 2782	42	43	11	
							25KAC 2783	43	44	28	
							25KAC 2784	44	45	3	
							25KAC 2785	45	46	2	

							25KAC 2786	46	47	7	
							25KAC 2787	47	48	97	
							25KAC 2788	52	53	23	
							25KAC 2789	53	54	96	
							25KAC 2790	54	55	6	
							25KAC 2791	55	56	2	
25KAC-053	754153.124	7407506.91	600	-60	0	101	25KAC 2792	0	1	14	
							25KAC 2793	1	2	3	
							25KAC 2794	2	3	3	
							25KAC 2795	3	4	3	
							25KAC 2796	4	5	14	
							25KAC 2797	5	6	2	
							25KAC 2798	6	7	10	
							25KAC 2799	7	8	161	
							25KAC 2800	12	13	5	
							25KAC 2801	13	14	6	
							25KAC 2802	14	15	63	
							25KAC 2803	15	16	6	
							25KAC 2807	24	25	3	
							25KAC 2808	25	26	6	
							25KAC 2809	26	27	6	
							25KAC 2810	27	28	30	
							25KAC 2811	28	29	13	
							25KAC 2812	29	30	37	
							25KAC 2813	30	31	50	
							25KAC 2814	31	32	6	
							25KAC 2815	32	33	16	
							25KAC 2816	33	34	8	
							25KAC 2817	34	35	12	
							25KAC 2818	35	36	50	
							25KAC 2819	40	41	4	
							25KAC 2820	41	42	30	
							25KAC 2821	42	43	91	
							25KAC 2822	43	44	44	
							25KAC 2823	48	49	19	
							25KAC 2824	49	50	20	
							25KAC 2825	50	51	2	
							25KAC 2826	51	52	41	
							25KAC 2827	52	53	4	
							25KAC 2828	53	54	10	
							25KAC 2829	54	55	53	
							25KAC 2830	55	56	32	
25KAC-054	754132.279	7407478.13	600	-60	0	108	25KAC 2831	32	33	74	
							25KAC 2832	33	34	6	
							25KAC 2833	34	35	10	
							25KAC 2834	35	36	48	
							25KAC 2835	36	37	61	
							25KAC 2836	37	38	62	
							25KAC 2837	38	39	15	
							25KAC 2838	39	40	X	
							25KAC 2839	44	45	33	
							25KAC 2840	45	46	2	

							25KAC 2841	46	47	1	
							25KAC 2842	47	48	60	
							25KAC 2843	104	105	8	
							25KAC 2844	105	106	31	
							25KAC 2845	106	107	32	
							25KAC 2846	107	108	17	
25KAC-055	754172.04	7407601.23	600	-60	0	111	25KAC 2847	28	29	3	
							25KAC 2848	29	30	8	
							25KAC 2849	30	31	3	
							25KAC 2850	31	32	88	
							25KAC 2851	32	33	55	
							25KAC 2852	33	34	86	
							25KAC 2853	34	35	18	
							25KAC 2854	35	36	12	
							25KAC 2855	36	37	15	
							25KAC 2856	37	38	62	
							25KAC 2860	38	39	31	
							25KAC 2861	39	40	8	
25KAC-056	754299.117	7407522.9	600	-60	0	80	25KAC 2862	16	17	9	
							25KAC 2863	17	18	5	
							25KAC 2864	18	19	450	415
							25KAC 2865	19	20	10	
							25KAC 2866	76	77	1	
							25KAC 2867	77	78	3	
							25KAC 2868	78	79	183	
							25KAC 2869	79	80	13	
25KAC-057	754278.519	7407479.04	600	-60	0	117	25KAC 2870	20	21	55	
							25KAC 2871	21	22	16	
							25KAC 2872	22	23	7	
							25KAC 2873	23	24	20	
							25KAC 2874	24	25	35	
							25KAC 2875	25	26	2	
							25KAC 2876	26	27	9	
							25KAC 2877	27	28	628	570
							25KAC 2878	36	37	47	
							25KAC 2879	37	38	98	
							25KAC 2880	38	39	21	
							25KAC 2881	39	40	19	
							25KAC 2882	64	65	186	
							25KAC 2883	65	66	210	
							25KAC 2884	66	67	24	
							25KAC 2885	67	68	4	
							25KAC 2886	68	69	8	
							25KAC 2887	69	70	5	
							25KAC 2888	70	71	2	
							25KAC 2889	71	72	2	
							25KAC 2890	80	81	1	
							25KAC 2891	81	82	1	
							25KAC 2892	82	83	1	
							25KAC 2893	83	84	X	
25KAC-058	754252.767	7407438.27	600	-60	0	74	25KAC 2894	24	25	X	
							25KAC 2895	25	26	13	

								25KAC 2896	26	27	386	
								25KAC 2897	27	28	18	
								25KAC 2898	64	65	31	
								25KAC 2899	65	66	4	
								25KAC 2900	66	67	17	
								25KAC 2904	67	68	43	
25KAC-060	754336.759	7407387.5	600	-60	0	112		25KAC 2905	100	101	25	
								25KAC 2906	101	102	X	
								25KAC 2907	102	103	1	
								25KAC 2908	103	104	2	
25KAC-061	754381.386	7407360.35	600	-60	0	72		25KAC 2909	8	9	73	
								25KAC 2910	9	10	81	
								25KAC 2911	10	11	4	
								25KAC 2912	11	12	11	
25KAC-062	754384.494	7407469.23	600	-60	0	93		25KAC 2913	32	33	59	
								25KAC 2914	33	34	74	
								25KAC 2915	34	35	82	
								25KAC 2916	35	36	55	
								25KAC 2917	40	41	31	
								25KAC 2918	41	42	7	
								25KAC 2919	42	43	7	
								25KAC 2920	43	44	51	
								25KAC 2921	44	45	46	
								25KAC 2922	45	46	10	
								25KAC 2923	46	47	9	
								25KAC 2924	47	48	10	
25KAC-065	754430.704	7407444.94	600	-60	0	85		25KAC 2925	40	41	21	
								25KAC 2926	41	42	14	
								25KAC 2927	42	43	36	
								25KAC 2928	43	44	19	
25KAC-066	754407.624	7407405.34	600	-60	0	110		25KAC 2929	72	73	X	
								25KAC 2930	73	74	35	
								25KAC 2931	74	75	2	
								25KAC 2932	75	76	394	
								25KAC 2933	80	81	36	
								25KAC 2934	81	82	56	
								25KAC 2935	82	83	271	
								25KAC 2936	83	84	23	
25KAC-067	754438.365	7407409.12	600	-60	0	67		25KAC 2937	64	65	3	
								25KAC 2938	65	66	2	
								25KAC 2939	66	67	20	
25KAC-068	754447.707	7407399.11	600	-60	0	70		25KAC 2940	60	61	2	
								25KAC 2941	61	62	X	
								25KAC 2942	62	63	3	
								25KAC 2943	63	64	79	
25KAC-073	754500.208	7407466.79	600	-60	0	120		25KAC 2944	44	45	2	
								25KAC 2945	45	46	1	
								25KAC 2946	46	47	2	
								25KAC 2947	47	48	X	
								25KAC 2948	48	49	1	
								25KAC 2949	49	50	1	
								25KAC 2950	50	51	1	

								25KAC 2951	51	52	6	
25KAC-074	754543.243	7407442.55	600	-60	0	47		25KAC 2955	40	41	69	
								25KAC 2956	41	42	20	
								25KAC 2957	42	43	33	
								25KAC 2958	43	44	200	
25KAC-075	754459.614	7407390.26	600	-60	0	90		25KAC 2959	72	73	17	
								25KAC 2960	73	74	4	
								25KAC 2961	74	75	104	
								25KAC 2962	75	76	57	
25KAC-077	754586.6	7407412.88	600	-60	0	44		25KAC 2963	0	1	19	
								25KAC 2964	1	2	11	
								25KAC 2965	2	3	2	
								25KAC 2966	3	4	157	
								25KAC 2967	4	5	>2000	5678
								25KAC 2968	5	6	52	
								25KAC 2969	6	7	67	
								25KAC 2970	7	8	22	
								25KAC 2971	12	13	14	
								25KAC 2972	13	14	130	
								25KAC 2973	14	15	3	
								25KAC 2974	15	16	7	
25KAC-078	754560.477	7407374.44	600	-60	0	63		25KAC 2975	36	37	24	
								25KAC 2976	37	38	126	
								25KAC 2977	38	39	23	
								25KAC 2978	39	40	4	
25KAC-079	754532.004	7407330.61	600	-60	0	104		25KAC 2979	16	17	X	
								25KAC 2980	17	18	1	
								25KAC 2981	18	19	X	
								25KAC 2982	19	20	X	
								25KAC 2983	88	89	56	
								25KAC 2984	89	90	1	
								25KAC 2985	90	91	7	
								25KAC 2986	91	92	29	
25KAC-081	754489.835	7407345.85	600	-60	0	138		25KAC 2987	0	1	1	
								25KAC 2988	1	2	X	
								25KAC 2989	2	3	X	
								25KAC 2990	3	4	X	
								25KAC 2991	100	101	284	
								25KAC 2992	101	102	289	
								25KAC 2993	102	103	202	
								25KAC 2994	103	104	30	
								25KAC 2995	104	105	9	
								25KAC 2996	105	106	7	
								25KAC 2997	106	107	31	
								25KAC 2998	107	108	2	
								25KAC 2999	120	121	41	
								25KAC 3000	121	122	52	
								25KAC 3001	122	123	3	
								25KAC 3002	123	124	2	
								25KAC 3006	128	129	6	
								25KAC 3007	129	130	X	
								25KAC 3008	130	131	4	

								25KAC 3009	131	132	4	
--	--	--	--	--	--	--	--	------------	-----	-----	---	--



Table 7: Phase 2 AC Drilling Results (4m Composites) – Tin Can Prospect

										Element	Au	Ag	As	Cr	Cu	Pb	Pd	Zn
										Units	ppb	ppm	ppm	ppm	ppm	ppm	ppb	ppm
										Detection	1	0.05	1	1	0.5	0.5	10	1
										Method	AR25/MS	AR25/MS	AR25/MS	AR25/MS	AR25/MS	AR25/MS	AR25/MS	AR25/MS
Hole Id	Easting	Northing	RL	Dip	Azi	Depth	Sample No	From	To	Au_ppb	Ag_ppm	As_ppm	Cr_ppm	Cu_ppm	Pb_ppm	Pd_ppb	Zn_ppm	
25KAC-117	753916	7407506	600	-60	30	57	AC - 1	0	4	46	0.36	20	492	116.6	5.5	X	102	
							AC - 2	4	8	3	0.19	5	212	135.2	0.6	X	54	
							AC - 3	8	12	7	0.27	11	149	167.7	0.6	15	87	
							AC - 4	12	16	5	0.26	13	151	163.1	0.9	15	76	
							AC - 5	16	20	11	0.17	55	137	120	1	13	81	
							AC - 6	20	24	17	0.06	33	186	43.2	0.7	X	61	
							AC - 7	24	28	120	0.23	33	363	159.7	1	13	58	
							AC - 8	28	32	19	0.16	19	2157	54.6	0.6	X	55	
							AC - 9	32	36	60	0.11	4	2175	20.5	0.6	X	57	
							AC - 10	36	40	235	0.68	7	2230	23	0.7	X	50	
							AC - 11	40	44	4	0.17	4	2359	14.3	0.8	X	58	
							AC - 12	44	48	2	X	19	2117	1.9	0.6	X	61	
							AC - 13	48	52	6	0.06	43	1696	53.1	1.3	X	70	
							AC - 14	52	57	9	0.1	93	709	185.9	1.3	X	89	
25KAC-118	753976	7407512	603	-60	30	131	AC - 15	0	4	3	0.14	27	396	80.3	3.7	X	66	
							AC - 16	4	8	2	0.07	11	379	122.4	0.8	X	44	
							AC - 17	8	12	2	0.06	15	426	112.5	0.9	X	46	
							AC - 18	12	16	X	0.12	31	341	96.7	0.8	X	62	
							AC - 19	16	20	3	0.1	21	317	92.1	1	X	93	
							AC - 20	20	24	9	0.1	17	1010	124.3	0.9	X	111	
							AC - 21	24	28	24	0.13	9	1120	160.3	2	X	66	
							AC - 22	28	32	1	X	3	2409	12.2	X	X	60	
							AC - 23	32	36	35	0.1	30	2425	49.1	0.8	X	80	
							AC - 24	36	40	7	0.13	14	364	115.9	0.5	X	55	
							AC - 25	40	44	3	0.12	6	96	201.6	0.7	X	95	
							AC - 26	44	48	19	0.19	6	75	142.5	0.6	X	101	
							AC - 27	48	52	18	0.18	6	63	163.3	0.6	X	114	
							AC - 28	52	56	1	0.13	8	50	226.7	0.5	X	124	
							AC - 29	56	60	2	0.1	5	39	165.9	X	X	104	
							AC - 30	60	64	24	0.1	16	2060	318.3	1.4	13	133	

							AC - 31	64	68	16	0.12	4	1524	41.4	X	X	102
							AC - 32	68	72	1	0.14	4	165	59.8	X	X	118
							AC - 33	72	76	1	0.09	7	646	243.6	1.2	X	116
							AC - 34	76	80	2	0.07	4	2446	226.1	1.7	X	54
							AC - 35	80	84	8	0.06	13	2137	209.2	2.6	X	52
							AC - 36	84	88	13	X	13	2710	56.1	0.9	X	57
							AC - 37	88	92	1	X	29	2402	15.6	X	X	64
							AC - 38	92	96	1	X	51	1714	40.6	1.1	X	66
							AC - 39	96	100	2	X	55	2591	15.6	1.2	X	63
							AC - 40	100	104	1	0.07	55	3616	16.7	0.7	X	92
							AC - 41	104	108	X	X	20	2704	34.3	1.2	X	72
							AC - 42	108	112	23	X	31	3476	31.9	1	X	93
							AC - 43	112	116	3	X	43	3394	117.6	2.5	X	129
							AC - 44	116	120	3	X	11	1339	82.7	1.5	X	90
							AC - 48	120	124	9	X	9	1315	147.4	1.4	X	109
							AC - 49	124	128	4	X	6	50	143.7	1	X	142
							AC - 50	128	131	18	0.11	2	36	102.5	1	X	141
25KAC-119	753965	7407494	601	-60	30	111	AC - 51	0	4	3	0.06	39	360	104.8	4	X	61
							AC - 52	4	8	1	0.06	5	275	84.6	0.7	X	21
							AC - 53	8	12	1	X	2	292	75.6	0.7	X	17
							AC - 54	12	16	3	0.09	X	278	54	0.5	X	63
							AC - 55	16	20	6	0.11	1	312	83	0.6	X	107
							AC - 56	20	24	2	0.14	2	280	73.4	X	X	144
							AC - 57	24	28	10	0.17	9	268	108.6	0.7	X	94
							AC - 58	28	32	9	0.07	12	140	121.9	0.9	X	61
							AC - 59	32	36	31	0.05	3	253	122.4	0.6	X	66
							AC - 63	36	40	11	X	3	325	212.9	0.6	X	46
							AC - 64	40	44	4	X	5	1848	39.4	1	X	75
							AC - 65	44	48	5	X	14	524	74.3	X	X	28
							AC - 66	48	52	17	X	39	65	121.5	0.8	X	59
							AC - 67	52	56	18	X	98	74	119.9	0.8	X	81
							AC - 68	56	60	2	X	61	48	166	0.6	X	95
							AC - 69	60	64	8	X	52	80	237.2	0.8	X	123
							AC - 70	64	68	6	X	19	97	243	0.9	X	137
							AC - 71	68	72	9	0.06	6	61	295	0.7	X	191
							AC - 72	72	76	18	0.13	3	99	292.1	0.8	X	165
							AC - 73	76	80	29	0.16	8	867	359	1.7	X	126
							AC - 74	80	84	4	X	10	2935	74.3	2.9	X	96
							AC - 75	84	88	19	0.07	7	1611	168.1	1.1	X	142
							AC - 76	88	92	14	X	6	150	87.9	0.7	X	171

							AC - 77	92	96	X	0.07	5	1430	68.8	2	X	67
							AC - 78	96	100	X	X	5	2285	115.6	2.6	X	38
							AC - 79	100	104	X	X	4	2350	90.5	2.4	X	40
							AC - 80	104	108	3	X	5	2955	81.6	2	X	54
							AC - 81	108	111	2	X	13	2884	59.4	2.9	X	64
25KAC-120	753949	7407463	599	-60	30	78	AC - 82	0	4	1	X	9	188	92.4	3.3	13	34
							AC - 83	4	8	X	X	2	109	88.2	1.4	13	21
							AC - 84	8	12	X	X	1	136	102.6	0.8	15	57
							AC - 85	12	16	X	X	1	101	110.6	0.6	16	51
							AC - 86	16	20	1	0.18	X	132	209.9	0.6	25	86
							AC - 87	20	24	X	X	2	123	190.9	0.5	12	32
							AC - 88	24	28	2	X	2	267	95.1	0.7	X	16
							AC - 89	28	32	2	X	2	287	175.4	0.7	12	19
							AC - 90	32	36	X	0.07	X	237	179.1	X	13	81
							AC - 91	36	40	2	0.05	3	189	431.7	0.8	14	141
							AC - 92	40	44	9	X	5	177	103	0.5	10	46
							AC - 93	44	48	1	X	6	124	145.3	0.8	10	34
							AC - 94	48	52	8	0.06	9	105	109.5	0.8	X	93
							AC - 95	52	56	11	0.06	14	196	124	0.7	X	63
							AC - 96	56	60	5	0.06	30	724	244.6	1.3	X	67
							AC - 97	60	64	4	X	13	1868	35.1	X	X	45
							AC - 98	64	68	1	X	3	1628	16.2	0.5	X	33
							AC - 99	68	72	30	0.1	20	1647	299.5	0.9	X	43
							AC - 100	72	76	13	0.1	13	87	226.9	0.8	X	76
							AC - 101	76	78	13	0.1	11	140	145.7	0.9	X	119
25KAC-121	754009	7407470	600	-60	30	49	AC - 102	0	4	3	X	27	392	86	1.9	12	69
							AC - 103	4	8	1	X	3	235	53.4	0.5	14	52
							AC - 104	8	12	X	X	4	140	131.5	0.7	22	41
							AC - 105	12	16	3	X	5	139	222.3	1.5	17	39
							AC - 106	16	20	6	0.06	4	114	226.7	1.1	18	45
							AC - 107	20	24	4	0.06	4	159	172.2	0.9	16	63
							AC - 108	24	28	2	X	5	167	100.5	0.8	11	47
							AC - 109	28	32	16	X	8	191	158.6	1.1	X	65
							AC - 110	32	36	5	0.06	11	343	175.7	1	X	88
							AC - 111	36	40	82	0.18	18	1915	427.6	1.4	14	191
							AC - 112	40	44	2	0.06	9	2926	272.5	0.9	X	77
							AC - 113	44	49	9	0.07	21	1624	120.2	0.9	X	69
25KAC-122	754047	7407506	602	-60	30	41	AC - 114	0	4	8	0.12	6	152	213.2	1.1	17	42

							AC - 115	4	8	29	0.11	10	538	272	1.2	23	71
							AC - 116	8	12	2	X	1	213	60.8	0.9	13	69
							AC - 117	12	16	9	0.08	4	665	141.6	0.7	X	173
							AC - 118	16	20	6	X	2	2248	45.1	0.9	X	53
							AC - 119	20	24	6	X	2	2807	13.6	0.7	X	54
							AC - 120	24	28	17	X	X	141	143.8	X	X	70
							AC - 121	28	32	X	X	1	1660	22.6	1.1	X	75
							AC - 122	32	36	11	X	8	2094	58.7	1	X	82
							AC - 126	36	41	9	0.07	9	833	112.1	X	X	72
25KAC-123	754103	7407531	603	-60	0	105	AC - 127	0	4	3	X	3	1825	6.5	X	X	109
							AC - 128	4	8	4	X	9	2625	73.2	0.6	X	92
							AC - 129	8	12	31	0.09	13	1750	185.7	0.9	X	102
							AC - 130	12	16	7	X	3	873	61.4	X	X	81
							AC - 131	16	20	7	X	X	1832	3.8	X	X	105
							AC - 132	20	24	99	0.32	6	515	216.2	X	X	189
							AC - 133	24	28	20	0.13	5	105	286.4	X	X	184
							AC - 134	28	32	29	0.11	3	78	210.2	X	X	189
							AC - 135	32	36	26	0.14	9	221	326.2	X	13	122
							AC - 136	36	40	46	0.18	10	2927	94.6	1.5	X	68
							AC - 137	40	44	2	X	62	2789	62.4	2	X	80
							AC - 138	44	48	X	X	63	2710	33.4	1.6	X	59
							AC - 139	48	52	X	X	45	2951	40.8	1.1	X	61
							AC - 140	52	56	1	X	97	2221	52.4	1	X	45
							AC - 141	56	60	X	X	85	2012	27.6	0.9	X	40
							AC - 142	60	64	11	X	70	2707	18.1	X	X	79
							AC - 143	64	68	2	X	124	2794	15.7	X	X	92
							AC - 144	68	72	X	X	242	3008	13.8	X	X	120
							AC - 145	72	76	9	X	195	2453	67.2	1	X	149
							AC - 146	76	80	157	X	57	838	79.9	0.8	16	92
							AC - 147	80	84	2	X	15	977	101.5	0.7	X	90
							AC - 148	84	88	2	X	33	1433	198.6	1.1	X	109
							AC - 149	88	92	4	X	37	1690	328.2	0.7	X	159
							AC - 150	92	96	2	X	22	1449	175.9	0.6	X	108
							AC - 151	96	100	X	X	14	1362	104.6	X	X	104
							AC - 152	100	105	4	X	18	1378	198.5	0.7	X	109
25KAC-124	754090	7407508	602	-60	30	105	AC - 153	0	4	6	0.18	11	233	291	1.4	29	109
							AC - 154	4	8	10	0.29	45	211	554.3	1.4	35	128
							AC - 155	8	12	16	0.24	9	339	576.7	X	16	90
							AC - 156	12	16	10	0.08	11	2179	123.4	1	X	81

							AC - 157	16	20	2	X	3	2625	23	0.6	X	73
							AC - 161	20	24	5	0.06	5	2438	9.7	0.6	X	52
							AC - 162	24	28	3	0.07	7	2890	84.3	0.8	X	54
							AC - 163	28	32	34	X	1	2833	11.2	1	X	51
							AC - 164	32	36	2	X	X	2190	7.6	X	X	48
							AC - 165	36	40	2	X	8	950	101.1	0.6	X	75
							AC - 166	40	44	9	0.11	4	340	76.6	0.7	X	106
							AC - 167	44	48	18	0.19	4	96	216	0.7	X	137
							AC - 168	48	52	25	0.13	4	179	167.8	X	X	106
							AC - 169	52	56	6	0.06	2	3209	126.6	2.1	X	82
							AC - 170	56	60	X	X	5	3546	72.3	1.5	X	53
							AC - 171	60	64	X	X	12	3179	69.1	1.2	X	57
							AC - 172	64	68	X	X	43	3229	31	1.7	X	64
							AC - 173	68	72	X	X	64	3360	27.5	0.8	X	67
							AC - 174	72	76	X	X	103	2923	21	X	X	92
							AC - 175	76	80	3	X	126	3012	9.8	X	X	83
							AC - 176	80	84	2	X	149	3064	18.4	X	X	88
							AC - 177	84	88	2	X	228	2826	25.1	1.4	X	109
							AC - 178	88	92	3	X	123	1312	88.7	1.2	X	82
							AC - 179	92	96	X	X	40	961	81.1	1	X	70
							AC - 180	96	100	5	X	64	903	337.8	2.7	X	88
							AC - 181	100	105	33	0.15	25	1268	151.3	1.3	15	87
25KAC-125	754054	7407455	600	-60	30	86	AC - 182	0	4	1	X	7	181	153.1	1.7	14	58
							AC - 183	4	8	X	X	5	212	134.4	1.1	14	41
							AC - 184	8	12	X	X	4	241	191.4	0.6	15	89
							AC - 185	12	16	X	X	3	178	201.3	0.6	16	71
							AC - 186	16	20	X	X	3	167	147.8	0.5	15	60
							AC - 187	20	24	X	0.06	2	162	137.6	0.6	16	56
							AC - 188	24	28	1	0.15	6	128	340.1	1.3	26	113
							AC - 189	28	32	X	X	15	214	186.6	0.9	20	68
							AC - 190	32	36	X	0.1	9	126	190.4	0.9	22	86
							AC - 191	36	40	2	X	3	92	59.2	0.7	X	135
							AC - 192	40	44	5	0.16	3	694	113	0.5	X	116
							AC - 193	44	48	3	0.06	7	2645	175.1	0.8	15	50
							AC - 194	48	52	X	X	X	1959	6.6	0.8	X	33
							AC - 195	52	56	1	X	X	2064	27.5	X	X	31
							AC - 196	56	60	X	X	X	1666	11.7	0.8	X	27
							AC - 197	60	64	X	X	1	1549	37.4	0.8	X	39
							AC - 198	64	68	X	X	X	2195	4.4	0.6	X	43
							AC - 199	68	72	13	X	5	1166	111.4	1	X	102

							AC - 200	72	76	18	X	11	128	157	1.1	X	141
							AC - 201	76	80	26	0.06	12	87	201.9	0.7	X	153
							AC - 202	80	84	26	0.07	12	75	195.8	0.6	X	157
							AC - 203	84	86	23	0.13	10	66	211.5	0.7	X	151
25KAC-126	754157	7407498	601	-60	30	105	AC - 204	0	4	12	1.16	14	209	239.9	1.8	14	112
							AC - 205	4	8	3	0.19	17	242	178.9	0.7	17	83
							AC - 206	8	12	7	0.23	15	315	689.4	0.8	17	79
							AC - 207	12	16	11	0.13	9	315	478.8	0.6	X	119
							AC - 211	16	20	35	0.09	13	805	579.1	1.8	X	153
							AC - 212	20	24	11	0.12	6	757	284.9	0.6	X	136
							AC - 213	24	28	6	0.28	6	2038	104.8	1.3	X	97
							AC - 214	28	32	77	0.73	54	3063	122.3	1.7	X	106
							AC - 215	32	36	4	0.05	12	3276	54	0.7	X	103
							AC - 216	36	40	13	0.12	14	1505	200	0.7	X	106
							AC - 217	40	44	24	1.21	25	958	220.7	1	X	103
							AC - 218	44	48	32	0.35	10	289	252.5	0.6	X	152
							AC - 219	48	52	36	0.26	3	95	290.6	0.5	X	166
							AC - 220	52	56	20	0.15	3	1112	309.8	X	X	129
							AC - 221	56	60	3	0.17	3	222	106.3	0.6	X	143
							AC - 222	60	64	38	0.07	3	2846	281	0.7	14	69
							AC - 223	64	68	30	0.17	8	3386	287.7	0.9	X	50
							AC - 224	68	72	4	0.08	3	3683	163	1.7	X	56
							AC - 225	72	76	1	0.07	59	2677	210.5	3	X	28
							AC - 226	76	80	X	0.05	40	2328	50.2	0.9	X	30
							AC - 227	80	84	X	0.06	57	1990	42.5	0.8	X	37
							AC - 228	84	88	X	X	94	1895	26.9	0.7	X	56
							AC - 229	88	92	7	X	95	2608	21.7	X	X	94
							AC - 230	92	96	5	X	49	443	89.4	0.6	X	53
							AC - 231	96	100	X	X	36	462	109.1	0.5	X	75
							AC - 232	100	105	4	X	36	365	145.5	X	X	71
25KAC-127	754148	7407478	601	-60	30	54	AC - 233	0	4	3	X	9	129	80.4	1	X	20
							AC - 234	4	8	X	X	11	82	78.1	0.6	11	19
							AC - 235	8	12	2	0.07	16	210	200.1	0.9	13	43
							AC - 236	12	16	2	X	9	141	73.5	X	X	21
							AC - 237	16	20	1	X	28	124	157.4	0.6	X	45
							AC - 238	20	24	2	X	15	135	119.9	0.7	11	30
							AC - 239	24	28	6	0.09	4	251	92.5	X	13	97
							AC - 240	28	32	6	X	2	266	263.6	X	X	65
							AC - 241	32	36	8	0.07	6	423	267.4	0.6	X	98

							AC - 242	36	40	14	0.05	4	1839	281.8	0.8	X	104
							AC - 243	40	44	X	X	4	2498	184	0.7	X	76
							AC - 244	44	48	17	0.08	2	1928	147.7	0.8	X	64
							AC - 245	48	52	32	X	10	1873	125	0.9	X	51
							AC - 246	52	54	X	X	X	2043	4.6	0.8	X	68
25KAC-128	754201	7407507	601	-60	30	98	AC - 247	0	4	6	0.08	41	345	107.1	1.6	11	36
							AC - 248	4	8	X	0.15	26	203	123	0.7	10	40
							AC - 249	8	12	1	0.09	41	198	199.2	1.1	11	76
							AC - 250	12	16	3	0.06	9	489	112.9	X	X	68
							AC - 251	16	20	4	X	6	1879	42.1	X	X	181
							AC - 252	20	24	X	X	4	2442	21.2	0.7	X	123
							AC - 253	24	28	23	X	2	2530	92.7	0.7	X	74
							AC - 257	28	32	12	X	2	2117	64.7	0.7	X	80
							AC - 258	32	36	5	0.09	5	154	96.6	0.5	X	139
							AC - 259	36	40	2	X	4	1085	98.2	0.6	X	111
							AC - 260	40	44	4	0.09	2	1207	211.2	0.5	X	128
							AC - 261	44	48	28	0.1	1	387	424.7	X	X	128
							AC - 262	48	52	2	0.1	X	1577	289.8	3.1	X	62
							AC - 263	52	56	X	X	X	1752	88.4	1	X	20
							AC - 264	56	60	11	0.09	1	1888	71.3	1.5	X	45
							AC - 265	60	64	6	0.06	69	1369	51	4.8	X	19
							AC - 266	64	68	X	X	148	1427	40.2	3.4	X	18
							AC - 267	68	72	X	X	94	1453	40.6	1.3	X	18
							AC - 268	72	76	X	X	91	1739	37.1	1	X	22
							AC - 269	76	80	X	X	63	1688	60.3	0.5	X	23
							AC - 270	80	84	2	X	175	1709	21.4	X	X	54
							AC - 271	84	88	X	X	140	1904	63.1	X	X	113
							AC - 272	88	92	10	X	57	597	157.3	X	X	98
							AC - 273	92	96	X	X	36	309	143.7	X	X	81
							AC - 274	96	98	18	0.06	43	168	244.4	X	X	33
25KAC-129	754190	7407482	600	-60	30	110	AC - 275	0	4	1	X	24	174	112.8	1.1	14	50
							AC - 276	4	8	1	0.07	39	166	124	1	13	50
							AC - 277	8	12	2	0.09	25	186	117.2	1.2	16	32
							AC - 278	12	16	5	X	33	172	122.9	1.5	19	23
							AC - 279	16	20	13	X	37	140	109.5	1.1	16	41
							AC - 280	20	24	7	X	19	161	118.4	1.2	11	40
							AC - 281	24	28	3	X	17	309	121.2	1	X	71
							AC - 282	28	32	127	X	24	394	126.5	X	X	49
							AC - 283	32	36	9	0.09	4	2195	86.9	0.6	X	138

							AC - 284	36	40	1	X	2	2378	5.7	0.9	X	64
							AC - 285	40	44	5	0.05	1	2319	121.1	0.7	X	68
							AC - 286	44	48	56	0.08	5	128	256.1	1	X	111
							AC - 287	48	52	7	0.05	12	152	152.8	1	X	162
							AC - 288	52	56	7	0.07	4	135	184.3	0.7	X	161
							AC - 289	56	60	11	X	2	68	215.6	0.7	X	178
							AC - 290	60	64	4	X	2	723	234.3	X	X	115
							AC - 291	64	68	9	X	X	1940	21.5	0.6	X	50
							AC - 292	68	72	4	X	3	556	77.2	X	X	101
							AC - 293	72	76	7	X	X	2136	45.2	1.2	X	40
							AC - 294	76	80	6	0.05	3	2204	174.2	1.5	X	53
							AC - 295	80	84	2	X	74	2093	151.7	1.7	X	22
							AC - 296	84	88	2	X	117	1539	45.1	1.1	X	21
							AC - 297	88	92	X	X	76	1467	28.9	0.6	X	19
							AC - 298	92	96	1	X	67	1948	24.8	0.6	X	48
							AC - 299	96	100	X	X	301	3586	35.9	0.5	X	104
							AC - 300	100	104	49	X	146	1454	109.5	1	13	91
							AC - 301	104	108	8	X	48	462	276.3	0.5	16	90
							AC - 302	108	110	29	X	37	583	121	X	13	89
25KAC-130	754172	7407457	600	-60	30	62	AC - 303	0	4	2	X	14	242	116.1	0.9	13	39
							AC - 304	4	8	X	X	11	202	132	0.6	X	51
							AC - 305	8	12	5	0.12	17	256	203.2	0.7	15	75
							AC - 306	12	16	8	0.11	13	182	222.8	0.8	14	130
							AC - 307	16	20	8	0.15	11	165	227.1	0.5	13	72
							AC - 308	20	24	4	0.11	9	126	148.7	0.6	10	41
							AC - 309	24	28	2	X	14	179	111.5	0.8	12	40
							AC - 310	28	32	2	X	15	183	112	1.1	11	48
							AC - 311	32	36	2	X	12	175	100.1	0.8	X	41
							AC - 312	36	40	1	X	45	188	110.4	0.7	X	58
							AC - 316	40	44	4	0.06	18	366	245.4	0.6	X	80
							AC - 317	44	48	9	0.09	3	656	242.4	0.6	X	112
							AC - 318	48	52	2	X	2	531	134.5	0.6	X	107
							AC - 319	52	56	X	X	5	2478	27.6	0.7	X	78
							AC - 320	56	60	18	X	5	1734	109.3	0.8	X	80
							AC - 321	60	62	2	X	5	2623	32.8	1	X	63
25KAC-131	754321	7407495	599	-60	30	96	AC - 322	0	4	1	X	16	2157	32.6	2	X	77
							AC - 323	4	8	X	X	3	2291	6.6	X	X	61
							AC - 324	8	12	X	X	2	2668	6.4	X	X	69
							AC - 325	12	16	X	X	3	2379	21.9	0.6	X	78

							AC - 326	16	20	2	X	4	2836	43	X	X	117
							AC - 327	20	24	16	0.2	8	774	120.2	0.8	X	26
							AC - 328	24	28	14	0.13	7	231	115.9	8	14	18
							AC - 329	28	32	143	0.17	7	237	52.9	4.8	14	13
							AC - 330	32	36	26	0.06	21	910	92.1	40.7	10	38
							AC - 331	36	40	16	0.05	16	2176	61.4	10.2	X	61
							AC - 332	40	44	3	X	9	1750	42.3	2.3	X	28
							AC - 333	44	48	2	X	57	1872	32.4	4.9	X	62
							AC - 334	48	52	5	X	150	2695	61.9	5.9	X	80
							AC - 335	52	56	X	X	154	1434	31.8	5.1	X	53
							AC - 336	56	60	8	X	193	1251	35.6	4.6	X	58
							AC - 337	60	64	3	X	168	690	45.5	21	16	22
							AC - 338	64	68	32	X	146	748	69.2	11.1	17	23
							AC - 339	68	72	X	X	107	1378	111	2.3	X	43
							AC - 340	72	76	2	X	44	491	97.5	X	X	25
							AC - 341	76	80	X	X	20	132	77.4	X	X	30
							AC - 342	80	84	5	X	39	539	169.4	X	X	112
							AC - 343	84	88	4	X	40	298	177.1	X	X	115
							AC - 344	88	92	4	X	36	216	132.7	0.6	X	131
							AC - 345	92	96	X	X	23	109	63.2	X	X	66
25KAC-132	754300	7407462	599	-60	30	106	AC - 346	0	4	2	0.08	17	158	161	1.5	17	49
							AC - 347	4	8	1	0.06	14	129	93.5	X	13	19
							AC - 348	8	12	X	X	21	103	101.7	X	13	20
							AC - 349	12	16	X	X	10	67	162.5	X	14	24
							AC - 350	16	20	4	0.05	13	108	125.3	X	21	21
							AC - 351	20	24	2	0.13	21	87	209.3	0.5	25	31
							AC - 352	24	28	2	0.11	28	128	108.3	X	14	34
							AC - 353	28	32	1	X	37	99	77	X	11	18
							AC - 354	32	36	2	X	36	122	167.2	X	X	13
							AC - 358	36	40	5	X	26	242	290.1	0.8	X	24
							AC - 359	40	44	16	0.08	14	1577	119.4	0.9	11	64
							AC - 360	44	48	5	X	2	3127	83.8	X	X	109
							AC - 361	48	52	11	0.14	2	2681	156.7	X	X	95
							AC - 362	52	56	101	0.34	3	149	364.7	1	X	166
							AC - 363	56	60	2	X	3	50	294.7	1	X	101
							AC - 364	60	64	X	X	1	37	227.5	0.7	X	12
							AC - 365	64	68	95	0.43	X	155	95.2	X	X	18
							AC - 366	68	72	4	0.06	1	1401	64.3	X	X	66
							AC - 367	72	76	7	0.06	11	1980	112.8	4.7	X	62
							AC - 368	76	80	2	X	26	1351	39.4	5.9	X	22

							AC - 369	80	84	X	X	127	1118	36.9	3	X	23
							AC - 370	84	88	X	X	140	844	22.7	4.1	X	10
							AC - 371	88	92	X	X	187	1009	27.2	8.7	X	20
							AC - 372	92	96	4	X	70	781	56.1	4.3	X	16
							AC - 373	96	100	X	X	27	1019	35.3	X	X	20
							AC - 374	100	104	X	X	32	627	68.8	X	X	60
							AC - 375	104	106	X	X	14	410	67.5	X	X	67
25KAC-133	754280	7407428	599	-60	30	75	AC - 376	0	4	1	X	46	154	190.4	1.3	X	114
							AC - 377	4	8	1	0.06	73	118	270.9	2.7	X	176
							AC - 378	8	12	X	X	46	18	233.4	3.2	X	136
							AC - 379	12	16	X	X	9	20	103.6	4.7	X	117
							AC - 380	16	20	6	0.05	9	22	75.9	3.9	X	127
							AC - 381	20	24	5	0.11	7	141	84.8	1.2	X	199
							AC - 382	24	28	X	0.19	33	93	516.8	1.3	32	92
							AC - 383	28	32	2	0.06	56	142	483.3	1	28	55
							AC - 384	32	36	1	X	84	123	540.1	0.9	16	57
							AC - 385	36	40	15	X	39	135	244.6	0.7	15	47
							AC - 386	40	44	4	X	27	109	101.4	X	10	19
							AC - 387	44	48	4	X	28	134	68.9	X	X	13
							AC - 388	48	52	1	0.07	26	119	76.5	0.9	X	18
							AC - 389	52	56	2	X	58	251	192.9	0.7	X	33
							AC - 390	56	60	2	X	51	340	187.2	X	X	34
							AC - 391	60	64	X	X	32	151	85.1	X	X	44
							AC - 392	64	68	4	X	22	844	159.1	X	X	112
							AC - 393	68	72	8	X	10	1460	244.3	X	X	88
							AC - 394	72	75	32	0.1	11	2020	281.8	X	17	63
25KAC-134	754355	7407477	599	-60	30	82	AC - 395	0	4	3	X	15	2501	35.2	3.1	X	66
							AC - 396	4	8	X	X	20	2573	23.5	0.7	X	46
							AC - 397	8	12	X	X	8	2072	8.6	X	X	41
							AC - 398	12	16	X	X	4	2324	2	X	X	54
							AC - 399	16	20	1	X	3	2089	48.6	X	X	61
							AC - 400	20	24	2	X	6	2453	41.4	X	X	73
							AC - 401	24	28	36	0.05	9	3006	90.1	X	X	68
							AC - 402	28	32	64	0.22	12	1859	109.5	X	X	75
							AC - 403	32	36	14	0.28	58	1014	138	17	X	120
							AC - 404	36	40	3	0.06	40	2249	63	7.9	X	68
							AC - 405	40	44	1	X	39	1920	59.3	3.8	X	57
							AC - 406	44	48	X	X	43	1399	55.1	3	X	41
							AC - 407	48	52	9	X	38	1580	39.4	3.9	X	35

							AC - 411	52	56	3	X	38	771	62.4	9.4	X	35
							AC - 412	56	60	65	0.07	30	445	149	1.8	X	47
							AC - 413	60	64	5	0.05	53	639	48.8	6.2	X	42
							AC - 414	64	68	1	X	29	883	43.3	5.4	X	34
							AC - 415	68	72	15	X	9	362	149.6	1.6	11	44
							AC - 416	72	76	23	X	11	290	169.8	X	55	94
							AC - 417	76	80	26	X	27	184	248.1	X	43	99
							AC - 418	80	82	14	0.07	25	150	231.3	X	33	59
25KAC-135	754402	7407441	599	-60	30	97	AC - 419	0	4	2	0.2	17	2283	11.1	1.7	X	65
							AC - 420	4	8	X	X	1	2556	1.2	1	X	50
							AC - 421	8	12	5	0.12	11	1529	87.9	1.8	X	61
							AC - 422	12	16	3	0.08	19	2138	65.7	1.1	X	62
							AC - 423	16	20	1	X	22	2460	69.5	0.5	X	46
							AC - 424	20	24	X	X	17	2711	1.7	X	X	37
							AC - 425	24	28	X	X	6	2403	12.4	0.8	X	40
							AC - 426	28	32	1	X	11	2065	24.9	X	X	41
							AC - 427	32	36	2	X	16	1779	17.1	X	X	28
							AC - 428	36	40	4	X	9	1729	42.3	X	X	40
							AC - 429	40	44	5	X	16	2153	42.5	X	X	55
							AC - 430	44	48	3	X	18	2314	9.1	X	X	67
							AC - 431	48	52	34	0.26	99	2108	168.2	1.1	X	106
							AC - 432	52	56	3	X	92	1067	76.5	1.6	X	85
							AC - 433	56	60	6	X	43	113	40.6	1.2	X	38
							AC - 434	60	64	22	0.05	14	134	59	1.4	X	55
							AC - 435	64	68	2	0.05	5	83	31.5	0.8	X	13
							AC - 436	68	72	8	X	26	165	75.4	0.8	X	41
							AC - 437	72	76	3	X	23	409	48.3	0.8	X	59
							AC - 438	76	80	7	0.15	66	889	70.2	X	X	136
							AC - 439	80	84	6	X	29	769	98.6	0.8	14	135
							AC - 440	84	88	2	X	2	293	182.2	X	16	146
							AC - 441	88	92	X	X	X	207	83.1	X	X	100
							AC - 442	92	97	X	X	22	197	176	X	11	38
25KAC-136	754562	7407418	601	-60	30	90	AC - 443	0	4	31	X	244	1518	35	10.1	X	60
							AC - 444	4	8	5	X	177	274	26.2	14	X	35
							AC - 445	8	12	9	X	227	434	38.1	18.3	X	32
							AC - 446	12	16	7	X	209	379	29.3	11.5	X	52
							AC - 447	16	20	27	0.06	219	361	65.2	33.1	X	69
							AC - 448	20	24	4	X	122	649	46.4	25.6	X	46
							AC - 449	24	28	5	X	147	742	72.7	13	X	72

							AC - 450	28	32	2	0.07	46	614	79.7	6.5	X	52
							AC - 451	32	36	1	0.05	28	238	120.5	11.8	X	23
							AC - 452	36	40	1	X	113	505	145.2	31.5	X	13
							AC - 453	40	44	X	0.12	10	70	37.8	12.3	X	4
							AC - 454	44	48	2	0.19	8	67	51	15.7	X	11
							AC - 455	48	52	X	X	12	107	56	19.7	X	20
							AC - 456	52	56	30	0.06	5	138	60	15.8	X	22
							AC - 457	56	60	14	X	4	94	34.3	21.1	X	20
							AC - 458	60	64	X	X	X	5	14.8	11.3	X	15
							AC - 459	64	68	X	0.06	X	8	14.2	22.7	X	12
							AC - 460	68	72	X	0.1	X	5	5	25.7	X	4
							AC - 461	72	76	1	0.09	X	4	7.5	23.9	X	14
							AC - 462	76	80	X	0.07	X	5	5.3	28.3	X	19
							AC - 463	80	84	1	0.05	1	4	7.9	36	X	24
							AC - 464	84	88	2	0.06	2	6	6.7	42.8	X	27
							AC - 465	88	90	2	0.09	X	4	5.4	35.9	X	23
25KAC-137	754547	7407398	601	-60	30	65	AC - 466	0	4	2	0.32	46	179	34.7	2.9	X	124
							AC - 467	4	8	X	0.12	79	2466	11.6	1.1	X	42
							AC - 468	8	12	1	X	58	2083	5.4	X	X	28
							AC - 469	12	16	2	X	73	2250	4.1	X	X	33
							AC - 470	16	20	8	0.1	62	1683	22	0.8	X	82
							AC - 474	20	24	12	0.16	49	991	87.3	1.6	X	108
							AC - 475	24	28	1	0.16	66	1566	30.5	4	X	31
							AC - 476	28	32	1739	0.17	98	1178	45.4	6.8	X	24
							AC - 477	32	36	10	0.08	109	982	32.9	14.1	X	20
							AC - 478	36	40	10	0.09	77	1009	37.4	2.4	X	58
							AC - 479	40	44	12	0.11	83	1490	35.3	0.9	X	37
							AC - 480	44	48	12	0.06	39	730	47.9	1.1	X	23
							AC - 481	48	52	6	0.25	30	1099	51.5	1.5	X	48
							AC - 482	52	56	3	0.22	19	862	95.3	1.3	X	58
							AC - 483	56	60	2	0.1	14	215	59.5	0.6	X	84
							AC - 484	60	65	3	0.09	18	278	59.2	X	X	94
25KAC-138	754578	7407396	601	-60	30	96	AC - 485	0	4	5	0.2	18	254	102.1	8.4	X	54
							AC - 486	4	8	3	0.16	51	1121	38.7	18	X	32
							AC - 487	8	12	2	0.11	122	1462	25.4	9.3	X	26
							AC - 488	12	16	1	0.07	134	1926	35.3	9.7	X	40
							AC - 489	16	20	2	X	154	2215	33.5	5.2	X	37
							AC - 490	20	24	10	X	180	1178	26.8	8.8	X	29
							AC - 491	24	28	2	X	239	520	42.6	21.3	X	60

							AC - 492	28	32	6	X	115	424	34.8	15.5	X	52
							AC - 493	32	36	3	X	37	1121	38.9	1.8	X	44
							AC - 494	36	40	3	X	59	1246	37.1	1.9	X	59
							AC - 495	40	44	2	X	23	1319	48.2	2.1	X	63
							AC - 496	44	48	2	X	26	740	33.7	1.8	X	68
							AC - 497	48	52	3	X	18	280	91.8	1.1	X	104
							AC - 498	52	56	6	X	10	244	44.8	12.1	X	54
							AC - 499	56	60	12	X	2	43	22.4	27.8	X	23
							AC - 500	60	64	9	0.06	1	55	40.4	19.5	X	24
							AC - 501	64	68	4	0.06	5	189	34.8	7.9	X	45
							AC - 502	68	72	8	X	3	180	27.8	7	X	70
							AC - 503	72	76	3	X	4	104	18.2	12	X	56
							AC - 504	76	80	1	X	X	5	14.4	12.2	X	37
							AC - 505	80	84	X	X	X	22	12.3	26.9	X	28
							AC - 506	84	88	X	X	X	11	5.3	21.4	X	26
							AC - 507	88	92	X	X	X	6	4.9	21.3	X	18
							AC - 508	92	96	2	X	X	4	4	19.7	X	16
25KAC-139	754597	7407394	602	-60	30	87	AC - 509	0	4	2	0.05	142	1145	48.5	13.9	X	57
							AC - 510	4	8	3	X	186	596	41.6	13.8	X	56
							AC - 511	8	12	15	X	161	547	23.9	11.4	X	33
							AC - 512	12	16	10	X	296	572	38.7	28.2	X	40
							AC - 513	16	20	41	X	388	606	44.8	36.6	X	57
							AC - 514	20	24	20	X	114	960	42.1	13.3	X	64
							AC - 515	24	28	5	X	124	1103	45.8	9.7	X	53
							AC - 516	28	32	2	X	116	1510	103.5	24	X	56
							AC - 517	32	36	2	X	37	413	124.8	15	X	11
							AC - 521	36	40	X	X	33	157	40.2	23.7	X	6
							AC - 522	40	44	4	0.08	26	201	35.6	41.6	X	7
							AC - 523	44	48	2	0.13	2	37	14.8	22.6	X	3
							AC - 524	48	52	1	0.1	2	79	37.2	25.6	X	41
							AC - 525	52	56	3	0.05	3	161	20	16.7	X	71
							AC - 526	56	60	3	0.06	7	186	48.3	25.5	X	65
							AC - 527	60	64	1	0.09	7	133	16.8	38.9	X	24
							AC - 528	64	68	2	X	X	6	10.3	22	X	16
							AC - 529	68	72	X	0.06	X	4	6.9	31.6	X	10
							AC - 530	72	76	X	X	1	8	8.7	30.2	X	22
							AC - 531	76	80	X	X	2	6	11.1	25.2	X	17
							AC - 532	80	84	1	X	X	3	4.5	25.8	X	18
							AC - 533	84	87	1	X	X	3	23.1	69.9	X	27
25KAC-	754582	7407371	602	-60	30	82	AC - 534	0	4	3	0.06	8	87	31.5	8.8	X	120

Appendix 1: JORC Code, 2012 Edition – Table 1 (Pilgangoora North)
Section 1 Sampling Techniques and Data

(Criteria in this section apply to all succeeding sections.)

Criteria	JORC Code explanation	Commentary
Sampling techniques	<p><i>Nature and quality of sampling (eg cut channels, random chips, or specific specialised industry standard measurement tools appropriate to the minerals under investigation, such as down hole gamma sondes, or handheld XRF instruments, etc). These examples should not be taken as limiting the broad meaning of sampling.</i></p> <p><i>Include reference to measures taken to ensure sample representivity and the appropriate calibration of any measurement tools or systems used.</i></p> <p><i>Aspects of the determination of mineralisation that are Material to the Public Report.</i></p> <p><i>In cases where 'industry standard' work has been done this would be relatively simple (eg 'reverse circulation drilling was used to obtain 1 m samples from which 3 kg was pulverised to produce a 30 g charge for fire assay'). In other cases more explanation may be required, such as where there is coarse gold that has inherent sampling problems. Unusual commodities or mineralisation types (eg submarine nodules) may warrant disclosure of detailed information.</i></p>	<p>Stream sediment samples were collected to follow-up reported occurrences of pegmatites and an historic lead occurrence in the DMIRS database.</p> <p>Stream sediment samples weighing 7-10kg were collected and sieved to a -5mm fraction in the field.</p> <p>Streams sediment samples were dried and sieved to two 3kg samples of -5mm+2mm and -2mm fractions. A 5kg subsample of the fine fraction material was retained for panning.</p>
Drilling techniques	<p><i>Drill type (eg core, reverse circulation, open-hole hammer, rotary air blast, auger, Bangka, sonic, etc) and details (eg core diameter, triple or standard tube, depth of diamond tails, face-sampling bit or other type, whether core is oriented and if so, by what method, etc).</i></p>	No drilling completed.
Drill sample recovery	<p><i>Method of recording and assessing core and chip sample recoveries and results assessed.</i></p> <p><i>Measures taken to maximise sample recovery and ensure representative nature of the samples.</i></p> <p><i>Whether a relationship exists between sample recovery and grade and whether sample bias may have occurred due to preferential loss/gain of fine/coarse material.</i></p>	No drilling completed.

Logging	<p><i>Whether core and chip samples have been geologically and geotechnically logged to a level of detail to support appropriate Mineral Resource estimation, mining studies and metallurgical studies.</i></p> <p><i>Whether logging is qualitative or quantitative in nature. Core (or costean, channel, etc) photography. The total length and percentage of the relevant intersections logged.</i></p>	<p>No drilling completed. Location of stream sediment sample recorded at each site.</p>
Sub-sampling techniques and sample preparation	<p><i>If core, whether cut or sawn and whether quarter, half or all core taken.</i></p> <p><i>If non-core, whether riffled, tube sampled, rotary split, etc and whether sampled wet or dry.</i></p> <p><i>For all sample types, the nature, quality and appropriateness of the sample preparation technique.</i></p> <p><i>Quality control procedures adopted for all sub-sampling stages to maximise representivity of samples.</i></p> <p><i>Measures taken to ensure that the sampling is representative of the in situ material collected, including for instance results for field duplicate/second-half sampling.</i></p> <p><i>Whether sample sizes are appropriate to the grain size of the material being sampled.</i></p>	<p>Duplicate samples were collected in the field and submitted for analysis in addition to blanks. The samples were prepared for analysis at Intertek Genalysis, Perth, with samples typically pulverised to at least 8% to 75µm or better.</p>
Quality of assay data and laboratory tests	<p><i>The nature, quality and appropriateness of the assaying and laboratory procedures used and whether the technique is considered partial or total.</i></p> <p><i>For geophysical tools, spectrometers, handheld XRF instruments, etc, the parameters used in determining the analysis including instrument make and model, reading times, calibrations factors applied and their derivation, etc.</i></p> <p><i>Nature of quality control procedures adopted (eg standards, blanks, duplicates, external laboratory checks) and whether acceptable levels of accuracy (ie lack of bias) and precision have been established.</i></p>	<p>All samples were analysed by Intertek Genalysis, a commercial independent laboratory in Perth, Western Australia. The stream sediment and rock chip samples were analysed for Au via low level gold cyanide leach and determined by ICP-MS and for a multielement suite via aqua regia digestion and determined by ICP-MS. Samples were also analysed for a multielement suite via fusion and determined by ICPMS or ICP-OES. Anomalous and overlimit Au results (>2000ppb) were re-analysed with 25g fire assay and determined by ICP-MS.</p>
Verification of sampling and assaying	<p><i>The verification of significant intersections by either independent or alternative company personnel.</i></p> <p><i>The use of twinned holes.</i></p> <p><i>Documentation of primary data, data entry procedures, data verification, data storage (physical and electronic) protocols.</i></p> <p><i>Discuss any adjustment to assay data.</i></p>	<p>Sample results and standards were reviewed by the company's technical consultants. Results are uploaded into the company database, checked and verified.</p>

4 March 2026

Location of data points	<p><i>Accuracy and quality of surveys used to locate drill holes (collar and down-hole surveys), trenches, mine workings and other locations used in Mineral Resource estimation.</i></p> <p><i>Specification of the grid system used.</i></p> <p><i>Quality and adequacy of topographic control.</i></p>	<p>Sample locations are located by handheld GPS to an accuracy of +/-5m.</p> <p>Locations are given in GDA94 Zone 50.</p> <p>Diagrams showing sample locations are provided in the report.</p>
Data spacing and distribution	<p><i>Data spacing for reporting of Exploration Results.</i></p> <p><i>Whether the data spacing and distribution is sufficient to establish the degree of geological and grade continuity appropriate for the Mineral Resource and Ore Reserve estimation procedure(s) and classifications applied.</i></p> <p><i>Whether sample compositing has been applied.</i></p>	<p>Sample locations were based on the locations of previous reported occurrences of pegmatites and the availability of stream sediment sample material.</p> <p>The samples results released in this report will not be used in a mineral resource.</p>
Orientation of data in relation to geological	<p><i>Whether the orientation of sampling achieves unbiased sampling of possible structures and the extent to which this is known, considering the deposit type.</i></p>	<p>Surface sampling and sampling techniques are considered appropriate for this early-stage of exploration.</p>
Sample security	<p><i>The measures taken to ensure sample security.</i></p>	<p>Samples are collected by onsite company personnel/contractors and delivered direct to the laboratory.</p>
Audits or reviews	<p><i>The results of any audits or reviews of sampling techniques and data.</i></p>	<p>No audits have been completed.</p>

Section 2 Reporting of Exploration Results

(Criteria listed in the preceding section also apply to this section.)

Criteria	JORC Code explanation	Commentary
Mineral tenement and land tenure status	<p>Type, reference name/number, location and ownership including agreements or material issues with third parties such as joint ventures, partnerships, overriding royalties, native title interests, historical sites, wilderness or national park and environmental settings.</p> <p>The security of the tenure held at the time of reporting along with any known impediments to obtaining a licence to operate in the area.</p>	<p>The Pilgangoora North Project comprises tenement E 45/5775.</p> <p>The tenement was granted to LMTD Pilbara Pty Ltd in July 2022.</p> <p>There are no Native Title Claims.</p>
Exploration done by other parties	<p><i>Acknowledgment and appraisal of exploration by other parties.</i></p>	<p>There has been limited RC drilling in the south east corner of E 45/5775.</p> <p>Historical exploration has mainly involved stream sediment and rock sampling</p> <p>A detailed review is in progress.</p>
Geology	<p><i>Deposit type, geological setting and style of mineralisation.</i></p>	<p>The Pilgangoora pegmatites are part of the later stages of intrusion of Archaean granitic batholiths into Archaean metagabbros and metavolcanics.</p> <p>Three distinct rare-metal-bearing magmatic phases are recognised in the Pilgangoora Li-Ta district: i) an early, coarse to extremely coarse spodumene (quartz±microcline) pegmatite, ii) a second stage fine grained Ta-Sn oxide-bearing aplite, and iii) a late-stage white-mica alteration assemblage comprised of seams of white mica (±white beryl, microlite, apatite and base metal sulphides).</p>
Drill hole Information	<p><i>A summary of all information material to the understanding of the exploration results including a tabulation of the following information for all Material drill</i></p>	<p>No drilling completed.</p>

Criteria	JORC Code explanation	Commentary
	<p>holes:</p> <ul style="list-style-type: none"> o easting and northing of the drill hole collar o elevation or RL (Reduced Level – elevation above sea level in metres) of the drill hole collar o dip and azimuth of the hole o down hole length and interception depth o hole length. <p>If the exclusion of this information is justified on the basis that the information is not Material and this exclusion does not detract from the understanding of the report, the Competent Person should clearly explain why this is the case.</p>	
Data aggregation methods	<p>In reporting Exploration Results, weighting averaging techniques, maximum and/or minimum grade truncations (eg cutting of high grades) and cut-off grades are usually Material and should be stated.</p> <p>Where aggregate intercepts incorporate short lengths of high grade results and longer lengths of low grade results, the procedure used for such aggregation should be stated and some typical examples of such aggregations should be shown in detail.</p> <p>The assumptions used for any reporting of metal equivalent values should be clearly stated.</p>	No data aggregation or intercept calculations are included in this release.
Relationship between mineralisation widths and intercept lengths	<p>These relationships are particularly important in the reporting of Exploration Results.</p> <p>If the geometry of the mineralisation with respect to the drill hole angle is known, its nature should be reported.</p> <p>If it is not known and only the down hole lengths are reported, there should be a clear statement to this effect (eg 'down hole length, true width not known').</p>	No drilling completed.
Diagrams	<p>Appropriate maps and sections (with scales) and tabulations of intercepts should be included for any significant discovery being reported. These should include, but not be limited to a plan view of drill hole collar locations and appropriate sectional views.</p>	Representative plans are provided in this report.
Balanced reporting	<p>Where comprehensive reporting of all Exploration Results is not practicable, representative reporting of both low and high grades and/or widths should be practiced to avoid misleading reporting of Exploration Results.</p>	<p>The report is considered balanced and provided in context.</p> <p>Further exploration activities are required to fully understand the results in greater detail.</p>
Other substantive exploration data	<p>Other exploration data, if meaningful and material, should be reported including (but not limited to): geological observations; geophysical survey results; geochemical survey results; bulk samples – size and method of treatment; metallurgical test results; bulk density, groundwater, geotechnical and rock characteristics; potential deleterious or contaminating substances.</p>	No extensive previous work has been done by Peregrine Gold Limited on the project except as described in the report.
Further work	<p>The nature and scale of planned further work (eg tests for lateral extensions or depth extensions or large-scale step-out drilling).</p> <p>Diagrams clearly highlighting the areas of possible extensions, including the main geological interpretations and future drilling areas, provided this information is not commercially sensitive.</p>	<p>The focus of further work, to include additional soil and rock sampling as well as geological mapping.</p> <p>Subject to results, reverse circulation drilling is planned.</p>

Appendix 2: JORC Code, 2012 Edition – Table 1 (Epithermal & Tin Can)
Section 1 Sampling Techniques and Data

(Criteria in this section apply to all succeeding sections.)

Criteria	JORC Code explanation	Commentary
Sampling techniques	<p><i>Nature and quality of sampling (eg cut channels, random chips, or specific specialised industry standard measurement tools appropriate to the minerals under investigation, such as down hole gamma sondes, or handheld XRF instruments, etc). These examples should not be taken as limiting the broad meaning of sampling.</i></p> <p><i>Include reference to measures taken to ensure sample representivity and the appropriate calibration of any measurement tools or systems used.</i></p> <p><i>Aspects of the determination of mineralisation that are Material to the Public Report.</i></p> <p><i>In cases where 'industry standard' work has been done this would be relatively simple (eg 'reverse circulation drilling was used to obtain 1 m samples from which 3 kg was pulverised to produce a 30 g charge for fire assay'). In other cases more explanation may be required, such as where there is coarse gold that has inherent sampling problems. Unusual commodities or mineralisation types (eg submarine nodules) may warrant disclosure of detailed information.</i></p>	<p>The sampling has been carried out using Aircore (AC) drilling from the Newman Gold & Iron Ore Project, in particular the following targets;</p> <ul style="list-style-type: none"> • Epithermal 28 holes for 1,091m (Phase 1) • Tin Can 88 holes for 7,294m (Phase 1) • Epithermal 22 holes for 982m (Phase 2) • Tin Can 24 holes for 2,068m (Phase 2) <p>Samples were collected as drilling chips from single metre spoil heaps placed in order on the ground. Samples were taken using a spear to provide a total of approximately 2-3 kg of drill spoil over 4 samples to make one 4 m composite.</p> <p>Sampling was carried out under Peregrine Gold's protocol and QAQC procedures. Laboratory QAQC was also conducted. See further details below.</p> <p>Holes were drilled with a 3.5-inch face-sampling blade bit (rare face sampling hammer), and 1m samples were collected through a cyclone into buckets as 1 m samples.</p> <p>For all samples, that were sent to the Intertek Genalysis laboratory in Perth for analysis. Samples were dried, and fully pulverised at the laboratory to -75 um and split to produce a nominal 200 g sub-sample of which 25 g was analysed using aqua-regia digestion and MS finish. This is deemed acceptable and industry standard for detecting low- level gold anomalism in weathered terranes.</p>
Drilling techniques	<p><i>Drill type (eg core, reverse circulation, open-hole hammer, rotary air blast, auger, Bangka, sonic, etc) and details (eg core diameter, triple or standard tube, depth of diamond tails, face-sampling bit or other type, whether core is oriented and if so, by what method, etc).</i></p>	<p>The program was conducted using a D&B 8-TM mounted Drill Rig for exploration AC drilling, owned and operated by Seismic Drilling Australia.</p> <p>The face-sampling blade or hammer bit has a diameter of 3.5 inches (90 mm).</p>
Drill sample recovery	<p><i>Method of recording and assessing core and chip sample recoveries and results assessed.</i></p> <p><i>Measures taken to maximise sample recovery and ensure representative nature of the samples.</i></p> <p><i>Whether a relationship exists between sample recovery and grade and whether sample bias may have occurred due to preferential loss/gain of fine/coarse material.</i></p>	<p>The majority of AC samples were dry. Drilling operators ensured water was lifted from the face of the hole at each rod change to ensure water did not interfere with drilling and to make sure samples were collected dry. Wet or damp samples are recorded in the database. Recovery of the samples was good, generally estimated to be full, except for some sample loss at the top of the hole. All mineralised samples were dry. Peregrine Gold Limited's procedure is to stop AC drilling if water cannot be kept out of the hole and continue with a DDH tail at a later time if required.</p> <p>Face-sample bits and dust suppression were used to minimise sample loss. Drilling airlifted the water column above the bottom of the hole to ensure dry sampling. AC samples are collected through a cyclone and into a bucket before placing in order on the ground.</p> <p>No significant sample bias or material loss was observed to have taken place during drilling activities.</p>

4 March 2026

Logging	<p><i>Whether core and chip samples have been geologically and geotechnically logged to a level of detail to support appropriate Mineral Resource estimation, mining studies and metallurgical studies.</i></p> <p><i>Whether logging is qualitative or quantitative in nature. Core (or costean, channel, etc) photography. The total length and percentage of the relevant intersections logged.</i></p>	<p>All chips were geologically logged by Peregrine Gold Limited geologists, using the Company's prescribed logging scheme. The detail of logging was sufficient for mineral resource estimation and technical studies.</p> <p>Logging of AC chips records lithology, mineralogy, mineralisation, weathering, colour and other features of the samples. All samples are wet-sieved for logging.</p> <p>All holes were logged in full.</p>
Sub-sampling techniques and sample preparation	<p><i>If core, whether cut or sawn and whether quarter, half or all core taken.</i></p> <p><i>If non-core, whether riffled, tube sampled, rotary split, etc and whether sampled wet or dry.</i></p> <p><i>For all sample types, the nature, quality and appropriateness of the sample preparation technique.</i></p> <p><i>Quality control procedures adopted for all sub-sampling stages to maximise representivity of samples.</i></p> <p><i>Measures taken to ensure that the sampling is representative of the in situ material collected, including for instance results for field duplicate/second-half sampling.</i></p> <p><i>Whether sample sizes are appropriate to the grain size of the material being sampled.</i></p>	<p>N/A</p> <p>1 m drill samples spoil heaps were spear sampled, and an average 2-3 kg sample is collected as a composite from 4 spoil heaps into a numbered calico bag and positioned at every fourth sample. >95% of samples were dry, and whether wet or dry is recorded.</p> <p>A duplicate field sample is taken at a rate of approximately 1 in 40 samples. At the laboratory, regular Repeats and Lab Check samples are assayed.</p> <p>Sample sizes are considered appropriate to give an indication of mineralisation given the expected particle size</p>
Quality of assay data and laboratory tests	<p><i>The nature, quality and appropriateness of the assaying and laboratory procedures used and whether the technique is considered partial or total.</i></p> <p><i>For geophysical tools, spectrometers, handheld XRF instruments, etc, the parameters used in determining the analysis including instrument make and model, reading times, calibrations factors applied and their derivation, etc.</i></p> <p><i>Nature of quality control procedures adopted (eg standards, blanks, duplicates, external laboratory checks) and whether acceptable levels of accuracy (ie lack of bias) and precision have been established.</i></p>	<p>Samples were analysed at the Intertek Genalysis Laboratory in Perth. The analytical method used was a 25 g pulverised split using an aqua regia digestion with ICP finish for gold and multi elements, which is considered to be appropriate for the material and mineralisation. The method gives an appropriate digestion of the material intercepted.</p> <p>Field Standards (Certified Reference Materials) and Blanks were inserted at a rate of approximately 1 in 40 samples for Standards and Blanks. Field duplicates are generally inserted at a rate of approximately 1 in 40.</p> <p>Umpire checks are not required for early-stage projects.</p>
Verification of sampling and assaying	<p><i>The verification of significant intersections by either independent or alternative company personnel.</i></p> <p><i>The use of twinned holes.</i></p> <p><i>Documentation of primary data, data entry procedures, data verification, data storage (physical and electronic) protocols.</i></p> <p><i>Discuss any adjustment to assay data.</i></p>	<p>Significant results are checked by the Technical Director. Additional checks are completed by the Database Manager. High-grade gold AC samples are panned or sieved to check for visual evidence of coarse gold.</p> <p>No twinned holes have been completed.</p> <p>All field logging is carried out in the field by a qualified geologist. Logging data is submitted electronically to the Database Geologist in the Perth office. Assay files are received electronically from the Laboratory. All data is stored in SQL database system and maintained by the Database Manager.</p> <p>No assay data was adjusted. The lab's primary Au field</p>

4 March 2026

Location of data points	<p><i>Accuracy and quality of surveys used to locate drill holes (collar and down-hole surveys), trenches, mine workings and other locations used in Mineral Resource estimation.</i></p> <p><i>Specification of the grid system used.</i></p> <p><i>Quality and adequacy of topographic control.</i></p>	<p>Collar locations were determined by handheld GPS, with an accuracy of 5 m in Northing and Easting. Additionally, if required, hole collars are measured with a tape measure and compass for direction to maintain accurate relative locations to each collar. For angled drill holes, the drill rig mast is set up using a clinometer.</p> <p>Grid projection is GDA94, MGA Zone 50.</p> <p>Collar RL's are assigned from a detailed lidar digital elevation model.</p>
Data spacing and distribution	<p><i>Data spacing for reporting of Exploration Results.</i></p> <p><i>Whether the data spacing and distribution is sufficient to establish the degree of geological and grade continuity appropriate for the Mineral Resource and Ore Reserve estimation procedure(s) and classifications applied.</i></p> <p><i>Whether sample compositing has been applied.</i></p>	<ul style="list-style-type: none"> • Epithermal 28 holes completed (Phase 1) • Tin Can 88 holes completed (Phase 1) • Epithermal 22 holes completed (Phase 2) • Tin Can 24 holes completed (Phase 2) <p>This is not considered relevant for this report.</p> <p>Samples are collected using a 4m composite for all drill holes, using the scoop/spear methodology from the one-metre spoil heaps. One metre individual samples are submitted where anomalous results arise from the composited samples. Composite sampling is undertaken using a stainless steel spear/trowel on the one-metre samples and combining them into a calico bag for a combined weight of approximately 2-3kg.</p>
Orientation of data in relation to geological	<p><i>Whether the orientation of sampling achieves unbiased sampling of possible structures and the extent to which this is known, considering the deposit type.</i></p>	<p>Drilling is designed to intersect any mineralisation as close to perpendicular as possible. Most drill holes are designed to dip at -60 degrees. The true width of drill intersection is not known at this time.</p>
Sample security	<p><i>The measures taken to ensure sample security.</i></p>	<p>Pre-numbered calico sample bags were collected in polyweave bags (five calico bags per single polyweave bag), sealed, and transported by company transport to the Intertek Genalysis Laboratory in Perth.</p>
Audits or reviews	<p><i>The results of any audits or reviews of sampling techniques and data.</i></p>	<p>Sampling and assaying techniques are industry-standard. No specific external audits or reviews have been undertaken at this stage in the programme.</p>

Section 2 Reporting of Exploration Results

(Criteria listed in the preceding section also apply to this section.)

Criteria	JORC Code explanation	Commentary
Mineral tenement and land tenure status	<p>Type, reference name/number, location and ownership including agreements or material issues with third parties such as joint ventures, partnerships, overriding royalties, native title interests, historical sites, wilderness or national park and environmental settings.</p> <p>The security of the tenure held at the time of reporting along with any known impediments to obtaining a licence to operate in the area.</p>	<p>The exploration results in this report relate to Exploration Licenses E52/3850 and E52/3097. Tenure in the form of Exploration Licenses with standard expiry conditions and options for renewal.</p> <p>E52/3850 and E52/3097 is 100% owned by Peregrine's subsidiary, Pilbara Gold Exploration Pty Ltd.</p> <p>The tenement is within the Nyiyaparli and Nyiyaparli #3 determination and claim for native title purposes.</p> <p>The tenements are in good standing and there are no known impediments.</p>
Exploration done by other parties	<p><i>Acknowledgment and appraisal of exploration by other parties.</i></p>	<p>Limited regional exploration on E52/3850 and E52/3097 was undertaken by previous companies and included geophysical, and geochemical surveys.</p> <p>Geochemical surveys included soil and stream sampling.</p>
Geology	<p><i>Deposit type, geological setting and style of mineralisation.</i></p>	<p>The tenements partially overlap the southeast corner of the Pilbara Craton with Archaean granite and minor greenstone exposed in the Sylvania Inlier. The northern margin of this terrane is in tectonic contact with the Fortescue and Hamersley Groups that lie within the</p>

Criteria	JORC Code explanation	Commentary
		<p>Hammersley Basin. In the south it is unconformably overlain by the Bresnahan and Bangemall basins that form the Bangemall Group. Gold deposits of significant scale occur in a variety of spatial and temporal settings.</p> <p>The assembly of the Archaean to Proterozoic rock between the Pilbara and Yilgarn cratons is referred to as the Capricorn Orogen. Approximately 1000km long and 500km wide, the damage zone of this orogen records this punctuated Proterozoic construction. It includes the deformed margins of these cratons as well as the continental margin rocks such as the Hammersley Basin, meta-igneous and metasedimentary rocks of the Gascoyne Complex and numerous low-grade sedimentary rocks such as the Bresnahan Basin.</p> <p>Throughout the region there are numerous gold, base metal and rare earth element occurrences. Deposits of significance are observed within the boundaries of the Capricorn Orogen which include the nearby Bibra, Paulsons/Whyloo Dome, Plutonic, Ashburton Project and the DeGrussa copper-gold-silver deposit.</p>
Drill hole Information	<p><i>A summary of all information material to the understanding of the exploration results including a tabulation of the following information for all Material drill holes:</i></p> <ul style="list-style-type: none"> ○ easting and northing of the drill hole collar ○ elevation or RL (<i>Reduced Level – elevation above sea level in metres</i>) of the drill hole collar ○ dip and azimuth of the hole ○ down hole length and interception depth ○ hole length. <p><i>If the exclusion of this information is justified on the basis that the information is not Material and this exclusion does not detract from the understanding of the report, the Competent Person should clearly explain why this is the case.</i></p>	Refer to tables included in the body of the report.
Data aggregation methods	<p><i>In reporting Exploration Results, weighting averaging techniques, maximum and/or minimum grade truncations (eg cutting of high grades) and cut-off grades are usually Material and should be stated.</i></p> <p><i>Where aggregate intercepts incorporate short lengths of high grade results and longer lengths of low grade results, the procedure used for such aggregation should be stated and some typical examples of such aggregations should be shown in detail.</i></p> <p><i>The assumptions used for any reporting of metal equivalent values should be clearly stated.</i></p>	Only field observations have been reported. There has been no data aggregation.
Relationship between mineralisation widths and intercept lengths	<p><i>These relationships are particularly important in the reporting of Exploration Results.</i></p> <p><i>If the geometry of the mineralisation with respect to the drill hole angle is known, its nature should be reported.</i></p> <p><i>If it is not known and only the down hole lengths are reported, there should be a clear statement to this effect (eg 'down hole length, true width not known').</i></p>	Drilling is designed to intersect any mineralisation as close to perpendicular as possible. Most drill holes are designed to dip at -60 degrees. The true width of drill intersection is not known at this time.
Diagrams	<p><i>Appropriate maps and sections (with scales) and tabulations of intercepts should be included for any significant discovery being reported. These should include, but not be limited to a plan view of drill hole collar locations and appropriate sectional views.</i></p>	Refer to diagrams in body of the report.

Criteria	JORC Code explanation	Commentary
Balanced reporting	<i>Where comprehensive reporting of all Exploration Results is not practicable, representative reporting of both low and high grades and/or widths should be practiced to avoid misleading reporting of Exploration Results.</i>	All available relevant information is presented.
Other substantive exploration data	<i>Other exploration data, if meaningful and material, should be reported including (but not limited to): geological observations; geophysical survey results; geochemical survey results; bulk samples – size and method of treatment; metallurgical test results; bulk density, groundwater, geotechnical and rock characteristics; potential deleterious or contaminating substances.</i>	All available relevant information is presented.
Further work	<p><i>The nature and scale of planned further work (eg tests for lateral extensions or depth extensions or large-scale step-out drilling).</i></p> <p><i>Diagrams clearly highlighting the areas of possible extensions, including the main geological interpretations and future drilling areas, provided this information is not commercially sensitive.</i></p>	Future exploration activities may include additional costeans followed by RC and or diamond drilling beneath the vein systems.

