

ASX Announcement 3 March 2026

# High-Grade 1m Assays Confirm New Gold Discoveries at Leonora South

## Highlights

- **Maiden RC drilling program successfully identifies new mineralised systems** at Woodpecker, Whistler and Niagara West within the Leonora South Gold Project.
- **High-grade 1-metre assays confirm near-surface gold mineralisation, including a standout result of 2m at 12.88 g/t Au from 37m, including 1m at 25.21 g/t Au (NIC057)** at Woodpecker.
- **Discovery at Whistler prospect**, a previously undrilled area, returns **1m at 3.56 g/t Au** from 12m (NIC061).
- **Extensive mineralisation confirmed at Niagara West**, with multiple intercepts across a 2km strike, including:
  - **12m at 0.51 g/t Au** from 27m, including **2m at 1.32 g/t Au** from 37m (NIC075) at Pirie
  - **1m at 3.59 g/t Au** from 15m with **repeat assay 1m at 6.58 g/t Au** (NIC088) at La Trobe East
- **Extensive exploration drilling scheduled for March 2026**, including a ~2,000m maiden program at the historic Cosmopolitan workings and ~1,200m of follow-up drilling at Woodpecker and Whistler.
- **Substantial development drilling to commence in early March 2026**, comprising ~30,000m at Mt Stirling and Stirling Well to support resource development, plus ~6,000m at the Orion, Sapphire, Eclipse and Euroa deposits.

**GoldArc Resources Limited (ASX:GA8) ('GoldArc' or 'the Company')** is pleased to announce the final 1-metre assay results from its recently completed Reverse Circulation (RC) drilling program at the Leonora South Gold Project. The program successfully identified new mineralised systems and confirmed high-grade, near-surface gold mineralisation at the Woodpecker, Whistler (E40/415), and Niagara West (M40/26) prospects.

**GoldArc Resources Managing Director, Paul Stephen commented:** "These results provide a strong validation of our exploration model at Leonora South. To see high-grade mineralisation in 1m at 25.21 g/t Au in our first-pass, shallow drilling campaign is an excellent outcome. Particularly exciting in the Whistler prospect, which had never been drilled before. We have barely scratched the surface of these mineralised systems, and we are eager to commence our next RC campaign to further unlock the potential of this project."

## Drilling Program Overview

The maiden RC drilling program comprised 37 holes for a total of 1,823m, designed to test historical gold workings with little to no historical drilling.

**ASX:GA8**

GoldArc Resources

goldarcres.com.au

104 Colin Street  
West Perth WA 6005

+618 9420 8208

The program intercepted numerous anomalies and ore-grade gold mineralisation, providing critical data on the dip of mineralised zones, geology and weathering profiles required for follow-up targeting.

See Appendix 1 for further information and a list of significant intercepts.

### Woodpecker Prospect

Drilling at Woodpecker targeted extensions of historical mineralisation. RC drill holes NIC057 and NIC058 were drilled behind historical aircore (AC) hole KYA17092, which intercepted 3m at 3.30 g/t Au from 23m<sup>1</sup> (see Figure 1).

NIC057 intersected **2m @ 12.88g/t Au** from 37m including **1m at 25.2 g/t Au**. The follow up RC drilling program is expected to commence late March 2026.



Figure 1 - Plan View of Drilling at Woodpecker

### Whistler Prospect

The Whistler prospect consists of a 2.4km line of historical gold shafts trending 020° in the central part of E40/415. These run parallel to the historical McTavish line of workings located about 1.2km to the east on tenements held by Arika Resources. Prior to this program, this area had not previously been drill tested.

<sup>1</sup> Please see WAMEX Report A117572 dated 31 August 2018 (<https://wamex.dmp.wa.gov.au/Wamex/>)

**ASX:GA8**

GoldArc Resources

goldarcres.com.au

104 Colin Street  
West Perth WA 6005

+61 8 9420 8208

Six RC drillholes were completed along three lines spaced 60m apart (see Figure 2). NIC061 returned **1m at 3.56 g/t Au** from 12m. The follow up RC drilling program is expected to commence late March 2026.



**Figure 2 - Plan View of Drilling at Whistler**

### Niagara West

Twenty-nine RC holes (NIC065 – NIC093) tested a 2km line of extensive workings within Niagara West tenement (M40/26) covering the Pirie, La Trobe, La Trobe East and Euroa prospect areas (see Figure 3). Drill lines were spaced between 80m and 180m apart in an area that previously had only a handful of sporadic historical drillholes.

Nearly every hole intercepted a significant amount of quartz veining within mainly mafic lithologies with minor felsic dykes. Quartz veining varied in dip from steep (80°) to shallow (40°) to the south. Significant results from the 1m splits include:

- **12m at 0.51 g/t Au** from 27m in hole NIC075 at Pirie
- **2m at 1.10 g/t Au** from 18m in hole NIC083 at La Trobe
- **1m at 3.59 g/t Au** from 15m in hole NIC088 at La Trobe East with repeat assay **1m at 6.58 g/t Au**
- **1m at 2.79 g/t Au** from 7m in hole NIC090 at Euroa
- **3m at 1.36 g/t Au** from 12m in hole NIC091 at Euroa
- **1m at 2.10 g/t Au** from 12m in hole NIC092 at Euroa
- **1m at 2.47 g/t Au** from 19m in hole NIC093 at Euroa.

**ASX:GA8**

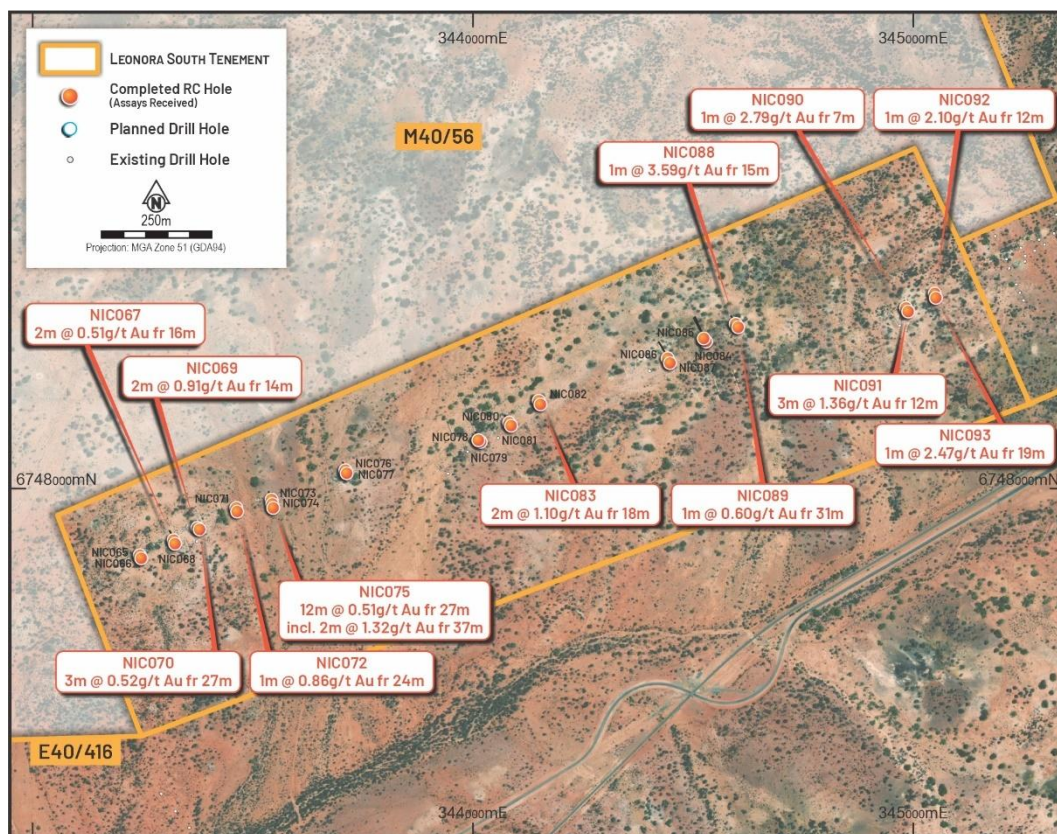
GoldArc Resources

goldarcres.com.au

104 Colin Street  
West Perth WA 6005

+61 8 9420 8208

These encouraging results support the need for further infill and deeper RC drilling along the 2km strike. A ~6,000 m RC follow-up/development drilling program is scheduled to commence in early March 2026 starting at Euroa. See Appendix 1 for further information and a list of significant intercepts.



**Figure 3 – Plan View of Drilling at Niagara West (Pirie, La Trobe, La Trobe East and Euroa)**

### Next Steps

The Company is advancing on the exploration success at Leonora South with a clear plan:

- A ~2,000 m RC maiden drilling program is scheduled to commence in early March 2026 at the Cosmopolitan old workings to evaluate gold potential. In the early 20th century, the Cosmopolitan ranked as one of the largest and most profitable gold mines in Western Australia.
- A ~1,200 m RC follow-up drilling program to commence in late March 2026 at Woodpecker and Whistler prospects.
- A ~6,000 m RC follow-up/development drilling program is scheduled to commence in early March 2026 at Orion, Sapphire, Eclipse and Euroa deposits.
- A ~30,000 m RC program is scheduled to commence in Early March 2026 at Mt Stirling and Mt Stirling Well to support resource development.
- Marking out the Mt Stirling and Stirling Well pit perimeters is underway.
- Concurrently, at the Leonora North Gold Project, a major soil survey is underway at Mt Stirling, to identify for additional mineralised trends

**ASX:GA8**

**GoldArc Resources**

goldarcres.com.au

104 Colin Street  
West Perth WA 6005

+618 9420 8208

This announcement has been authorised for release by the Board of Directors.

- ENDS -

#### **Investors**

##### **Paul Stephen**

Managing Director

GoldArc Resources Limited

[info@goldarcres.com.au](mailto:info@goldarcres.com.au)

#### **Investor Relations**

##### **Madeline Howson**

Investor Relations

Discovir Investor Relations

[madeline@discovir.com.au](mailto:madeline@discovir.com.au)

#### **Forward Looking Statements Disclaimer**

This announcement contains certain "forward-looking statements" and comments about future matters. Forward-looking statements can generally be identified by the use of forward-looking words such as, "expect", "anticipate", "likely", "intend", "should", "estimate", "target", "outlook", and other similar expressions and include, but are not limited to, indications of, and guidance or outlook on, future events, growth opportunities, exploration activities or the financial position or performance of the Company. You are cautioned not to place undue reliance on forward-looking statements. Any such statements, opinions and estimates in this release speak only as of the date hereof, are preliminary views and are based on assumptions and contingencies subject to change without notice. Forward-looking statements are provided as a general guide only. There can be no assurance that actual outcomes will not differ materially from these forward-looking statements. Any such forward-looking statement also inherently involves known and unknown risks, uncertainties and other factors and may involve significant elements of subjective judgement and assumptions that may cause actual results, performance and achievements to differ. Except as required by law the Company undertakes no obligation to finalise, check, supplement, revise or update forward-looking statements in the future, regardless of whether new information, future events or results or other factors affect the information contained in this announcement.

#### **Competent Persons Statements**

The information in this report as it relates to exploration results and geology is based on, and fairly represents, information and supporting documentation that was compiled by Mr. Ziggy Lubieniecki, who is a director, employee and shareholder of the Company. Mr. Lubieniecki has sufficient experience which is relevant to the styles of mineralisation and types of deposit under consideration and to the activities which he is undertaking to qualify as a Competent Person as defined in the 2012 Edition of the Australasian Code for Reporting of Exploration Results, Mineral Resources and Ore Reserves'. Mr. Lubieniecki consents to the inclusion in the report of the matters based on the information in the form and context in which it appears.

The information in this announcement that relates to the Orion-Sapphire Mineral Resources is contained in the ASX announcement released on 28 May 2024. The information in this announcement that relates to the gold Mineral Resources for the Mt Stirling Project is contained in the ASX announcements released on 25 February 2019, 29 January 2020 and 5 September 2022. The Company confirms that it is not aware of any new information or data that materially affects the information in the relevant market announcements, and that all material assumptions and technical parameters underpinning the estimates in the relevant announcement continue to apply and have not materially changed. that the Company confirms that the form and context in which the Competent Persons findings are presented have not been materially modified from the original announcements.

**ASX:GA8**

**GoldArc Resources**

[goldarcres.com.au](http://goldarcres.com.au)

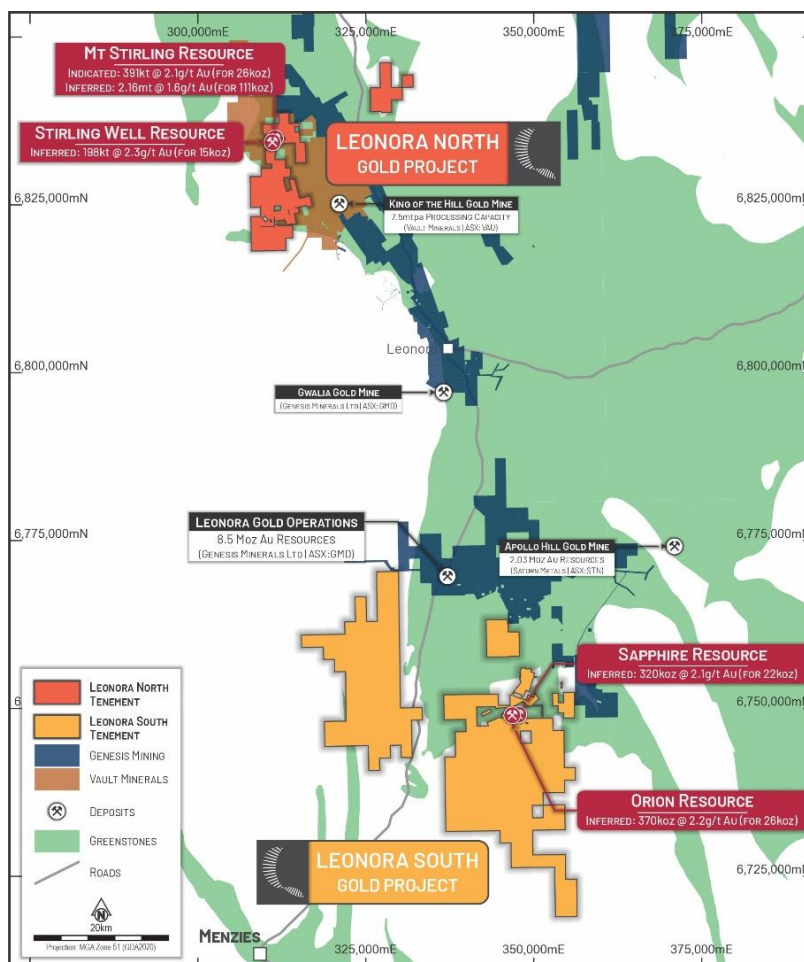
104 Colin Street  
West Perth WA 6005

+61 8 9420 8208



## About GoldArc Resources

**GoldArc Resources Limited (ASX:GA8)** is a Western Australian focused mineral exploration company with a portfolio of highly prospective gold projects located in the world-class Leonora and Kookynie districts of the Eastern Goldfields. GoldArc's strategy is focused on growing its existing 200,000oz JORC resource base and making new, large-scale discoveries through a disciplined and systematic approach to exploration.



## GoldArc Resources Total JORC Mineral Resources

GoldArc Gold Projects	Category	Tonnes	Gold Grade (g/t Au)	Gold Ounces
Leonora North - Mt Stirling	Indicated	391,000	2.1	26,000
	Inferred	2,158,000	1.6	111,000
Leonora North - Stirling Well	Inferred	198,000	2.3	15,000
Leonora South - Orion	Inferred	370,000	2.2	26,409
Leonora South - Sapphire	Inferred	320,000	2.1	21,605
<b>Total</b>		<b>3,437,000</b>	<b>1.82</b>	<b>200,014</b>

**ASX:GA8**

GoldArc Resources

goldarcres.com.au

104 Colin Street  
West Perth WA 6005

+61 8 9420 8208



GoldArc

## Appendix 1 – RC Drillhole Information

### Collar Information

Coordinates provided in GDA94\_Zone 51S

Prospect	Hole ID	Easting	Northing	RL	Azimuth	Dip	Depth
Woodpecker South	NIC057	348,158	6,754,675	442	270	-60	79
Woodpecker South	NIC058	348,179	6,754,676	442	270	-60	120
Whistler	NIC059	348,915	6,754,236	442	289	-60	30
Whistler	NIC060	348,919	6,754,234	442	289	-60	49
Whistler	NIC061	348,899	6,754,179	442	289	-60	30
Whistler	NIC062	348,905	6,754,176	442	289	-60	49
Whistler	NIC063	348,878	6,754,124	442	289	-60	30
Whistler	NIC064	348,888	6,754,124	442	289	-60	49
Pirie	NIC065	343,243	6,747,851	454	330	-60	25
Pirie	NIC066	343,246	6,747,844	454	330	-60	40
Pirie	NIC067	343,320	6,747,885	454	330	-60	46
Pirie	NIC068	343,323	6,747,877	454	330	-60	66
Pirie	NIC069	343,374	6,747,913	454	330	-60	25
Pirie	NIC070	343,379	6,747,909	454	330	-60	46
Pirie	NIC071	343,462	6,747,958	454	330	-60	31
Pirie	NIC072	343,464	6,747,950	454	330	-60	43
Pirie	NIC073	343,542	6,747,977	454	330	-60	37
Pirie	NIC074	343,544	6,747,967	454	330	-60	37
Pirie	NIC075	343,546	6,747,958	454	330	-60	55
Pirie	NIC076	343,710	6,748,044	454	330	-60	31
Pirie	NIC077	343,713	6,748,037	454	330	-60	55
La Trobe	NIC078	344,012	6,748,112	458	325	-60	25
La Trobe	NIC079	344,017	6,748,108	458	325	-60	49
La Trobe	NIC080	344,082	6,748,152	458	325	-60	37
La Trobe	NIC081	344,086	6,748,145	458	325	-60	55
La Trobe	NIC082	344,149	6,748,201	458	325	-60	25
La Trobe	NIC083	344,153	6,748,193	458	325	-60	43
La Trobe East	NIC084	344,442	6,748,298	458	325	-60	97
La Trobe East	NIC085	344,447	6,748,287	458	325	-60	115
La Trobe East	NIC086	344,524	6,748,343	458	325	-60	79
La Trobe East	NIC087	344,529	6,748,336	458	325	-60	97
La Trobe East	NIC088	344,596	6,748,376	458	325	-60	37
La Trobe East	NIC089	344,602	6,748,368	458	325	-60	55
Euroa	NIC090	344,983	6,748,412	464	330	-60	25
Euroa	NIC091	344,988	6,748,404	464	330	-60	43
Euroa	NIC092	345,048	6,748,445	464	330	-60	25
Euroa	NIC093	345,051	6,748,435	464	330	-60	43

### Significant Intercepts (Au > 0.1 g/t)

Prospect	Hole ID	Sample ID	m from	m to	Au g/t	Au g/t (Rpt1)	Au g/t (Rpt2)
Woodpecker South	NIC057	GAR01752	37	38	25.2	21.6	
Woodpecker South	NIC057	GAR01753	38	39	0.5		
Woodpecker South	NIC057	GAR01754	39	40	0.5		
Woodpecker South	NIC057	GAR01755	40	41	0.1		
Whistler	NIC060	GAR01759	31	32	0.3		
Whistler	NIC060	GAR01760	32	33	0.4		
Whistler	NIC061	GAR01764	12	13	3.6	4.1	
Whistler	NIC063	GAR01768	13	14	0.2		
Whistler	NIC063	GAR01770	14	15	0.4		
Whistler	NIC064	GAR01771	9	10	0.3		
Whistler	NIC064	GAR01777	13	14	0.2		
Whistler	NIC064	GAR01780	16	17	0.2		
Whistler	NIC064	GAR01781	17	18	0.3		
Whistler	NIC064	GAR01782	18	19	0.1		
Whistler	NIC064	GAR01783	19	20	0.2		
Whistler	NIC064	GAR01784	20	21	0.2		
Whistler	NIC064	GAR01785	21	22	0.8		
Whistler	NIC064	GAR01786	22	23	0.3		

ASX:GA8

GoldArc Resources

goldarcres.com.au

104 Colin Street  
West Perth WA 6005

+61 8 9420 8208



Significant Intercepts, continued (Au > 0.1 g/t)

Prospect	Hole ID	Sample ID	m from	m to	Au g/t	Au g/t (Rpt1)	Au g/t (Rpt2)
Pirie	NIC067	GAR01792	16	17	0.2		
Pirie	NIC067	GAR01793	17	18	0.8		
Pirie	NIC067	GAR01795	37	38	0.3		
Pirie	NIC069	GAR01798	13	14	0.1		
Pirie	NIC069	GAR01799	14	15	1.3		
Pirie	NIC069	GAR01801	15	16	0.6		
Pirie	NIC070	GAR01804	24	25	0.2		
Pirie	NIC070	GAR01806	26	27	0.2		
Pirie	NIC070	GAR01807	27	28	0.4		
Pirie	NIC070	GAR01808	28	29	0.5		
Pirie	NIC070	GAR01809	29	30	0.7		
Pirie	NIC072	GAR01811	24	25	0.9		
Pirie	NIC072	GAR01813	25	26	0.1		
Pirie	NIC073	GAR01816	19	20	0.1		
Pirie	NIC073	GAR01817	20	21	0.2		
Pirie	NIC073	GAR01818	21	22	0.2		
Pirie	NIC073	GAR01820	23	24	0.1		
Pirie	NIC073	GAR01821	30	31	0.1		
Pirie	NIC073	GAR01822	31	32	0.4		
Pirie	NIC073	GAR01823	32	33	0.2		
Pirie	NIC073	GAR01828	35	36	0.2		
Pirie	NIC074	GAR01829	12	13	0.2		
Pirie	NIC074	GAR01831	14	15	0.1		
Pirie	NIC074	GAR01832	15	16	0.3		
Pirie	NIC074	GAR01833	16	17	0.2		
Pirie	NIC074	GAR01834	17	18	0.3		
Pirie	NIC074	GAR01835	18	19	0.3		
Pirie	NIC074	GAR01837	20	21	0.2		
Pirie	NIC074	GAR01839	28	29	0.2		
Pirie	NIC074	GAR01841	30	31	0.3		
Pirie	NIC074	GAR01846	35	36	0.2		
Pirie	NIC075	GAR01848	19	20	0.2		
Pirie	NIC075	GAR01851	27	28	0.3		
Pirie	NIC075	GAR01852	28	29	1.0		
Pirie	NIC075	GAR01853	29	30	0.8		
Pirie	NIC075	GAR01854	30	31	0.3		
Pirie	NIC075	GAR01855	31	32	0.2		
Pirie	NIC075	GAR01856	32	33	0.1		
Pirie	NIC075	GAR01857	33	34	0.3		
Pirie	NIC075	GAR01858	34	35	0.2		
Pirie	NIC075	GAR01859	35	36	0.2		
Pirie	NIC075	GAR01862	37	38	1.5		
Pirie	NIC075	GAR01863	38	39	1.2		
Pirie	NIC075	GAR01864	45	46	0.1		
Pirie	NIC075	GAR01865	46	47	0.1		
Pirie	NIC077	GAR01869	47	48	0.2		
Pirie	NIC077	GAR01872	54	55	0.2		
La Trobe	NIC082	GAR01883	23	24	0.1		
La Trobe	NIC082	GAR01884	24	25	0.2		
La Trobe	NIC083	GAR01885	18	19	0.3		
La Trobe	NIC083	GAR01886	19	20	1.9		
La Trobe	NIC083	GAR01889	22	23	0.5		
La Trobe	NIC083	GAR01890	23	24	0.2		
La Trobe East	NIC084	GAR01895	46	47	0.2		
La Trobe East	NIC085	GAR01899	38	39	0.2		
La Trobe East	NIC086	GAR01901	12	13	0.2		
La Trobe East	NIC087	GAR01906	23	24	0.2		
La Trobe East	NIC088	GAR01907	15	16	3.6	6.6	2.8
La Trobe East	NIC088	GAR01909	17	18	0.4		
La Trobe East	NIC089	GAR01915	31	32	0.6		
Euroa	NIC090	GAR01918	7	8	2.8		
Euroa	NIC091	GAR01920	12	13	0.5		
Euroa	NIC091	GAR01921	13	14	2.9		
Euroa	NIC091	GAR01922	14	15	0.7		
Euroa	NIC092	GAR01923	12	13	2.1		
Euroa	NIC093	GAR01929	19	20	2.5		

ASX:GA8

GoldArc Resources

goldarcres.com.au

104 Colin Street  
West Perth WA 6005

+61 8 9420 8208



## Appendix 2 – JORC Code, 2012 Edition – Table 1

### Section 1 – Sampling Techniques and Data

Criteria	Commentary
<b>Sampling techniques</b>	<ul style="list-style-type: none"> <li>• Samples within the Projects were collected using Reverse Circulation (RC Holes) were angled at 60°. Given the status of the Project this is considered reasonable.</li> <li>• RC samples were collected every 3m downhole using a cyclone splitter. Samples were collected using industry standard methods</li> <li>• All samples were crushed at the independent international accredited laboratory, 50g Fire Assay RC samples an established Industry-standard method for gold mineralisation</li> <li>• The sampling techniques used are deemed appropriate for the style of mineralisation and exploration undertaken</li> <li>• Gold Arc ensures all sample preparation was completed by independent international accredited laboratories.</li> <li>• For the historical holes KYA17091-KYA17094 data refer to WAMEXa11572 report</li> </ul>
<b>Drilling techniques</b>	<ul style="list-style-type: none"> <li>• RC Drilling was undertaken by Drill Safe Services; Industry Drilling methods and equipment were utilised to maximise sample integrity and recovery</li> <li>• For the historical holes KYA17091-KYA17094 data refer to WAMEXa11572 report</li> </ul>
<b>Drill sample recovery</b>	<ul style="list-style-type: none"> <li>• All care was taken by Drill Safe Services to maximise the drill sample recovery</li> <li>• Sample recovery and condition data are noted in geological comments as part of the logging process for RC drilling</li> <li>• No quantitative twinned drilling has been undertaken. No relationship was able to be settled due to limited data</li> <li>• For the historical holes KYA17091-KYA17094 data refer to WAMEXa11572 report</li> </ul>
<b>Logging</b>	<ul style="list-style-type: none"> <li>• All drill holes have been geologically logged to an appropriate level of detail to support a mineral resource estimation.</li> <li>• Logging is qualitative in nature based on the observational skills and experience of the rig Geologist</li> <li>• All drilling was logged from start of hole to end of hole and all holes were logged.</li> <li>• Logging was captured digitally</li> <li>• For the historical holes KYA17091-KYA17094 data refer to WAMEXa11572 report</li> </ul>
<b>Sub-sampling techniques and sample preparation</b>	<ul style="list-style-type: none"> <li>• Samples were prepared and analysed at Intertek Laboratories in Kalgoorlie and Perth</li> <li>• Samples were crushed so that each sample had a nominal 85% passing 2mm</li> <li>• All samples were analysed for gold via 50g fire assay</li> <li>• Sample preparation was by Intertek laboratory in Perth, and the samples were pulverised to less than 75um for 50g fire assay for all samples. Pulverisation was required for 50g Fire Assays – RC samples.</li> <li>• The QAQC procedure included assaying of Oreas Standards, sand blanks and quartz washes between certain samples</li> <li>• Industry standard sampling methods employed, and size of samples is appropriate for material sampled</li> <li>• For the historical holes KYA17091-KYA17094 data refer to WAMEXa11572 report</li> </ul>
<b>Quality of assay data and laboratory tests</b>	<ul style="list-style-type: none"> <li>• All samples were assayed by industry-standard techniques</li> <li>• Typical analysis methods are detailed in the previous section and are considered 'near total' values</li> <li>• Routine 'standard' (mineralised pulp) Certified Reference Material (CRM) was inserted by Gold Arc at a nominal rate of 1 in 25 samples</li> <li>• Routine 'blank' material (unmineralised sand) was inserted at a nominal rate of 1 in 50 samples</li> <li>• Composite duplicates along with primary duplicates were obtained at a nominal rate of 1 in 50 samples</li> <li>• No significant issues have been noted. The techniques are considered quantitative in nature</li> <li>• The Analytical method is considered appropriate for samples with visible gold observed</li> <li>• The analytical laboratories provided their own routine quality controls within their own practices as per international ISO standards</li> <li>• For the historical holes KYA17091-KYA17094 data refer to WAMEXa11572 report</li> </ul>
<b>Verification of sampling and assaying</b>	<ul style="list-style-type: none"> <li>• Independent verification of significant intersections was carried out by additional company personnel, reviewing the original laboratory files and the assay database. Additional company personnel were present from the point of logging the geology to submission of the samples</li> <li>• This drilling was in confirmation holes for verification purposes.</li> <li>• There has been no adjustment to the assay data</li> <li>• For the historical holes KYA17091-KYA17094 data refer to WAMEXa11572 report</li> </ul>
<b>Location of data points</b>	<ul style="list-style-type: none"> <li>• Drill hole collars were surveyed in GDA 94_51 coordinates using both handheld GPS</li> <li>• Down hole surveys were taken at the end of the drilling using the Axis Gyro tool</li> <li>• For the historical holes KYA17091-KYA17094 data refer to WAMEXa11572 report</li> </ul>

**ASX:GA8**

GoldArc Resources

goldarcres.com.au

104 Colin Street  
West Perth WA 6005

+61 8 9420 8208

Criteria	Commentary
<b>Data spacing and distribution</b>	<ul style="list-style-type: none"> <li>Drill spacing is appropriate for the reporting of exploration results</li> <li>For the historical holes KYA17091-KYA17094 data refer to WAMEXa11572 report</li> </ul>
<b>Orientation of data in relation to geological structure</b>	<ul style="list-style-type: none"> <li>The drilling is approximately perpendicular to the strike and dip of mineralisation and therefore the sampling is considered representative of the mineralised zones</li> <li>The deposits are aligned with well-defined structural orientations and drilling is oriented to generally intersect at a high angle to the mineralisation and the holes have been angled at -60</li> <li>For the historical holes KYA17091-KYA17094 data refer to WAMEXa11572 report</li> </ul>
<b>Sample security</b>	<ul style="list-style-type: none"> <li>Samples were delivered to the laboratory prep facility in Kalgoorlie by Gold Arc personnel</li> <li>For the historical holes KYA17091-KYA17094 data refer to WAMEXa11572 report</li> </ul>
<b>Audits or reviews</b>	<ul style="list-style-type: none"> <li>Reviews by independent consultants have been carried out</li> <li>No formal audits have taken place</li> <li>For the historical holes KYA17091-KYA17094 data refer to WAMEXa11572 report</li> </ul>

## Section 2 – Reporting of Exploration Results

Criteria	Commentary
<b>Mineral tenement and land tenure status</b>	<ul style="list-style-type: none"> <li>RC was drilled at E40/415 on Mining Lease M40/27.</li> <li>GoldArc has a 70% interest in the Leonora South Gold Project (Kookynie Project), the remaining 30% is held by Kalgoorlie Mining Associates Pty Ltd and Zigmund Wolski</li> <li>Historical Drilling Data Review was carried on valid Western Australian Mining Licenses 100% owned by Ziggy Wolski and the leases are in good standing</li> <li>The Niagara Gold Project in the Kookynie Gold District of Western Australia comprises eight granted Mining Leases (M40/02, M40/08, M40/26, M40/56, M40/117, M40/192, M40/342, M40/344), two granted Exploration Licenses (E40/396 and E40/397), three pending Exploration Licenses (E40/413, E40/415, E40/416), and nine pending Prospecting Licenses (P40/1533, P40/1546, P40/1547, P40/1548, P40/1549, P40/1550, P40/1553, P40/1556, P40/1557). The combined area of the project is approximately 38, 400 ha</li> <li>There is a 2% Royalty to a third party for minerals on these licenses</li> <li>There are no known impediments to obtaining a license to operate</li> </ul>
<b>Exploration done by other parties</b>	<ul style="list-style-type: none"> <li>Niagara Gold Tenements have undergone multiple drill programs over a protracted period focusing on areas around the historic prospects of Cosmopolitan, Diamantina, Orion, Sapphire, Gladstone, Missing Link, Eclipse, OK, Justice, Challenge, Niagara, Latrobe, and W.E.G. This drilling has already resulted in modern (post 1980) mining campaigns at Diamantina, Orion, and Sapphire. Numerous significant intercepts occur outside of mined areas</li> <li>1982 Australian Anglo-American drilling at Orion Sapphire.</li> <li>1981-1985 Mogul Mining</li> <li>1982-1987 BP Minerals, Minplex Resources and Spargos Exploration</li> <li>1984-1989 BP Minerals</li> <li>1982-1990 BP Minerals and Hill Minerals and Hillman Gold mines explored the Sapphire workings with RAB and RC drilling</li> <li>1990-2000 Money Mining drilled the Diamantina and Cosmopolitan mineralization CRC and DRC drillholes</li> <li>1993-1994 Horizon Mining Niagara Project. RC and Diamond drilling for a resource definition at Orion and Sapphire</li> <li>2000-2010 Diamond ventures Kookynie Resources and Barmenco drilled Diamantina and Cosmopolitan. Kookynie Resources drilled extensions at Sapphire and Orion.</li> <li>2010-2020 Nex Metals from 2009-2013, sold to A&amp;C Mining Investments in 2014. A&amp;C completed Aircore and RC drilling</li> </ul>
<b>Geology</b>	<ul style="list-style-type: none"> <li>The Kookynie Gold Project is located in the central part of the Norseman-Wiluna belt of the Eastern Goldfields terrane. Host rocks in the region are primarily metasedimentary and metavolcanic lithologies of the Melita greenstones.</li> <li>Gold mineralisation is developed within structures encompassing a range of orientations and deformation styles.</li> <li>At the Gladstone, Orion and Sapphire deposits, gold mineralisation is controlled by a quartz vein system which trends east-northeast across an iron rich dolerite/gabbro host rock (the Niagara Gabbro Complex). The system dips to the south at between 50° and 80°. The mineralised structure, which is generally 2 to 5 metres wide, appears to be brittle with only minor shearing and alteration of the host gabbro.</li> </ul>

**ASX:GA8**

**GoldArc Resources**

goldarcres.com.au

104 Colin Street  
West Perth WA 6005

+61 8 9420 8208

Criteria	Commentary
<b>Drill hole Information</b>	<ul style="list-style-type: none"> <li>All results reported for historical intersections were reported by previous exploration companies.</li> <li>Drill holes KYA17091-94 onwards were drilled and reported by A &amp; C Mining Investment in 2017</li> <li>The extent of drilling is shown with diagrams and tables included in this announcement</li> </ul>
<b>Data aggregation methods</b>	<ul style="list-style-type: none"> <li>All reported assay intervals have been length weighted. No top cuts were applied. A nominal cut-off of 0.5 g/t Au was applied with up to 2m of internal dilution allowed</li> <li>Intervals reported for all holes that are used in the Mineral Resource Estimate</li> <li>High grade mineralised intervals internal to broader zones of lower grade mineralisation are reported as included intervals</li> <li>No metal equivalent values have been used or reported</li> </ul>
<b>Relationship between mineralisation widths and intercept lengths</b>	<ul style="list-style-type: none"> <li>The drill holes are interpreted to be approximately perpendicular to the strike and dip of mineralisation.</li> <li>All results were reported as down holes</li> </ul>
<b>Diagrams</b>	<ul style="list-style-type: none"> <li>Suitable figures have been included in the body of the announcement</li> </ul>
<b>Balanced reporting</b>	<ul style="list-style-type: none"> <li>Key results and conclusions have been included in the body of the announcement</li> </ul>
<b>Other substantive exploration data</b>	<ul style="list-style-type: none"> <li>Compilation of all historical exploration data at the project is underway and will be stored digitally</li> </ul>
<b>Further work</b>	<ul style="list-style-type: none"> <li>Follow up field work is planned to include follow up sampling of 3m composites and additional drilling over areas of significant gold mineralisation</li> </ul>

**ASX:GA8**

**GoldArc Resources**

goldarcres.com.au

104 Colin Street  
West Perth WA 6005

+618 9420 8208

