

Lithium, Gold & Next-Generation Battery Technology.

Investor Presentation - February 2026

 **ASX:CRR**

Important Notices and Disclaimer

Summary Information This document contains a summary of information about Critical Resources Limited ("Critical Resources" or "the Company") and its activities that is current as at the date of this document unless otherwise stated. The information in this document is general in nature and does not contain all the information which a prospective investor may require in evaluating a possible investment in Critical Resources or that would be required in a prospectus or a product disclosure statement prepared in accordance with the Corporations Act 2001 or the securities laws of any other jurisdiction. The information in this document should be read in conjunction with the Company's other periodic and continuous disclosure announcements lodged with the ASX.

No Liability. The information contained in this document has been prepared in good faith by the Company however no guarantee, representation or warranty expressed or implied is or will be made by any person (including the Company and its affiliates and their directors, officers, employees, associates, advisers and agents) as to the accuracy, reliability, correctness, completeness or adequacy of any statements, estimates, options, conclusions or other information contained in this document. No person other than the Company is responsible for the preparation of this document. To the maximum extent permitted by law, the Company and its affiliates and their directors, officers, employees, associates, advisers and agents each expressly disclaims any and all liability, including, without limitation, any liability arising out of fault or negligence, for any loss arising from the use of or reliance on information contained in this document including representations or warranties or in relation to the accuracy or completeness of the information, statements, opinions, forecasts, reports or other matters, express or implied, contained in, arising out of or derived from, or for omissions from, this document including, without limitation, any financial information, any estimates, forecasts, or projections and any other financial information derived therefrom. Statements in this document are made only as of the date of this document unless otherwise stated and the information in this document remains subject to change without notice. No responsibility or liability is assumed by the Company or any of its affiliates (or their directors, officers, employees, associates, advisers and agents) for updating any information in this document or to inform any recipient of any new or more accurate information or any errors or misdescriptions of which the Company and any of its affiliates or advisers may become aware.

Forward-Looking Statements. Statements contained in this document, including but not limited to those regarding the possible or assumed future costs, projected timeframes, performance, dividends, returns, revenue, exchange rates, potential growth of Critical Resources, industry growth, commodity or price forecasts, or other projections and any estimated company earnings are or may be forward-looking statements. Forward-looking statements can generally be identified by the use of words such as 'project', 'foresee', 'plan', 'expect', 'aim', 'anticipate', 'believe', 'estimate', 'may', 'should', or similar expressions. Forward-looking statements, including all statements in this presentation regarding the outcomes of preliminary and definitive feasibility studies, projections, guidance on future earnings and estimates, are provided as a general guide only and should not be relied upon as an indication or guarantee of future performance. These statements relate to future events and expectations and, as such, involve known and unknown risks and significant uncertainties, many of which are outside the control of the Company. Actual results, performance, actions and developments of the Company may differ materially from those expressed or implied by the forward-looking statements in this document. Such forward-looking statements speak only as of the date of this document. There can be no assurance that actual

outcomes will not differ materially from these statements. To the maximum extent permitted by law, the Company and any of its affiliates and their directors, officers, employees, agents, associates and advisers disclaim any obligations or undertaking to release any updates or revisions to the information in this document to reflect any change in expectations or assumptions and do not make any representation or warranty, express or implied, as to the accuracy, reliability or completeness of the information in this document, or likelihood of fulfilment of any forward-looking statement or any event or results expressed or implied in any forward-looking statement and disclaim all responsibility and liability for these forward-looking statements (without limitation, liability for negligence). Nothing in this document will under any circumstances create an implication that there has been no change in the affairs of the Company since the date of this document.

Not Financial Product Advice. This document does not constitute financial product advice or take into account your investment objectives, taxation situation, financial situation or needs. This document consists purely of factual information and does not involve or imply a recommendation of a statement of opinion in respect of whether to buy, sell or hold a financial product. An investment in the Company is considered to be speculative in nature and is subject to known and unknown risks, some of which are beyond the control of the Company. Before making any investment decision in connection with any acquisition of securities, investors should consult their own legal, tax and/or financial advisers in relation to the information in, and action taken on the basis of this document.

Financial data. All amounts are in Australian Dollars (AUD) unless otherwise indicated. A number of figures, amounts, percentages, estimates, calculations of values and fractions in this presentation are subject to the effect of rounding. Accordingly, the actual calculation of these figures may differ from the figures set out in this presentation.

JORC Code. It is a requirement of the ASX Listing Rules that the reporting of exploration results, ore reserves and mineral resources in Australia comply with the Joint Ore Reserves Committee's Australasian Code for Reporting of Mineral Resources and Ore Reserves ("JORC Code"). Investors outside Australia should note that while reporting in this document complies with the JORC Code, they may not comply with the relevant guidelines in other countries. Information contained in this document describing mineral deposits may not be comparable to similar information made public by companies subject to the reporting and disclosure requirements of Canadian or US securities laws.

Acceptance By attending a presentation or briefing, or accepting, accessing or reviewing this document, you acknowledge, accept and agree to the matters set out above.

Authorisation. This document has been authorised for release by the Company's Board of Directors.

Refer to the Company's ASX Announcements for JORC Table 1 and Table 2 for results and information contained in this presentation.



Overview of Critical Resources

Targeting the next High-Grade Critical Metals Discovery.



Critical Resources Limited

- **Multi-commodity exposure** - lithium, gold and antimony across Tier-1 geology and jurisdictions: Australia, Canada and New Zealand.
- **North American lithium resource** – Mavis Lake, Ontario Canada.
- **High-impact gold portfolio** in the Otago and Reefton regions, New Zealand.
- **Solid-state Lithium-ion battery evaluation** – enhancing optionality across partnerships and commercial pathways.
- **Aligned, experienced leadership** with ~11.0 % ownership.

Capital Structure - ASX:CRR

\$0.009

Share Price - 24 Feb 2026

\$29M

Market Cap (A\$)

\$0

Debt (\$A)

\$0.96M

Cash Position
as of 31st Dec 2025 **before**
\$1.75M Capital Raise 29 Jan 2026

3.17B

Shares on Issue

~49%

Top 20 Holders



ASX:CRR

Mavis Lake Project

Lithium Resource

Ontario - Canada



Mavis Lake - Lithium

North American Lithium Resource



**Critical
Resources
Limited**

- **Growing lithium resource with substantial expansion potential**
– Northwest Ontario, Canada.
- Strategically located to **support the North American lithium supply chain.**
- **World-class Infrastructure** – excellent access to multiple road/rail/shipping transport corridors and hydro/gas power.
- Metallurgical **recoveries up to 87 %²**, with significant potential to improve process flowsheet.
- **Continuing low-cost value-adding** workstreams in progress.
- **Permitting & Regulatory Acceleration:** Engagement of SLR Consulting and Pathway Group to execute an integrated permitting and government advocacy strategy.



Mavis Lake – Main Zone – looking northeast.

1. ASX:CRR announcement - Maiden Mineral Resource at Mavis Lake - 5 May 2023
2. ASX:CRR announcement - Excellent Results from Metallurgical Test Work - 3 April 2023
3. ASX:CRR announcement - Corporate Presentation 2024 – 8 May 2024

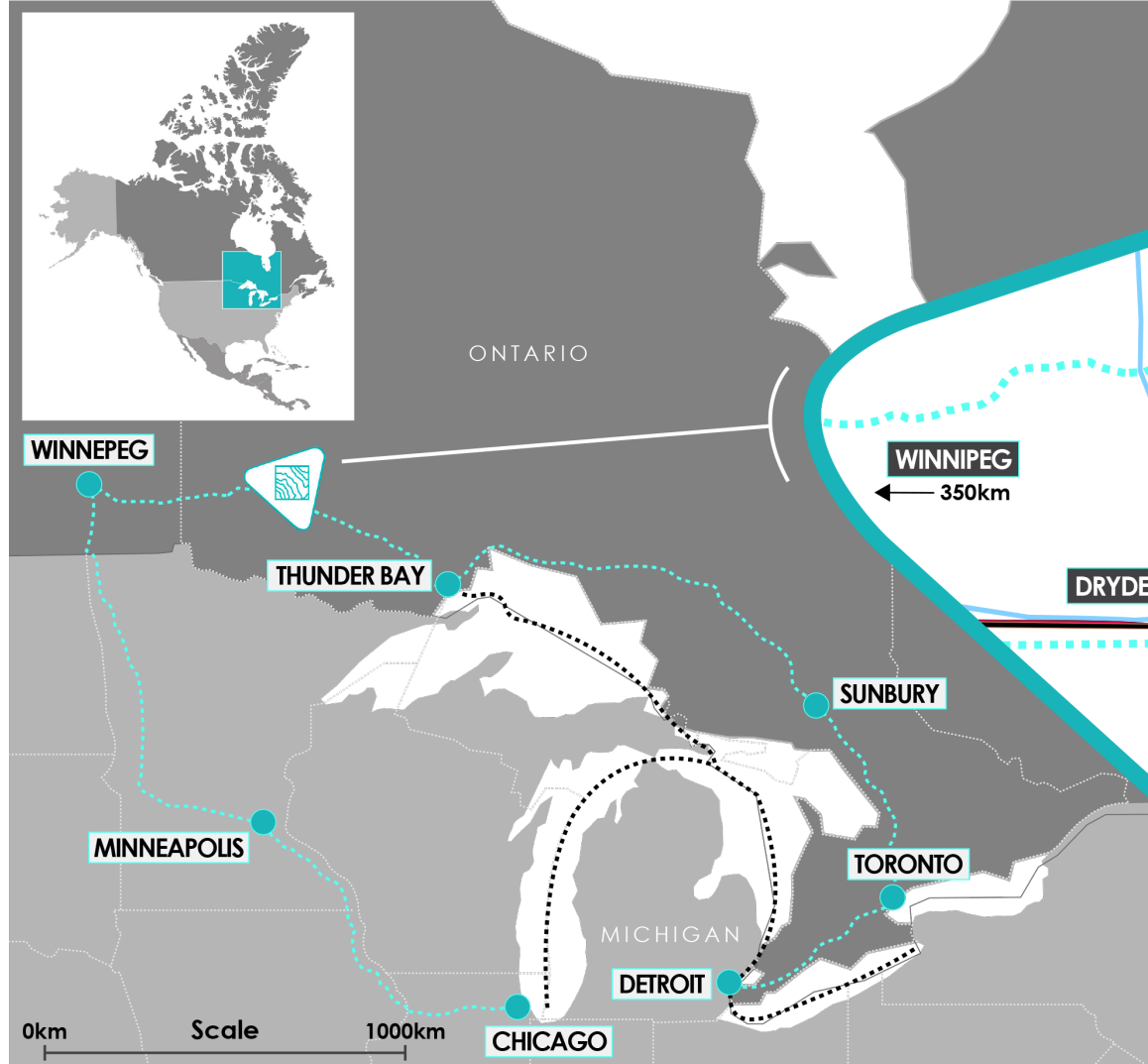


ASX:CRR

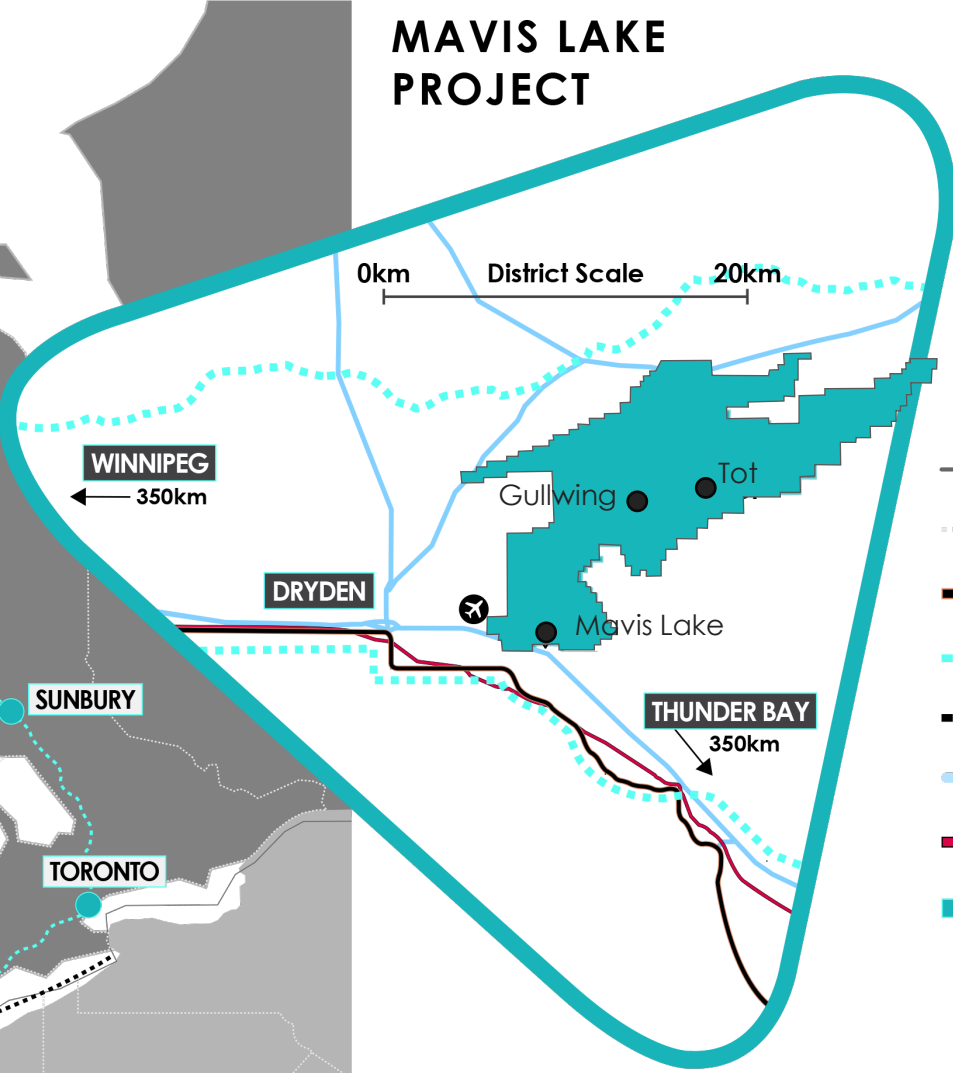


MAVIS LAKE - LITHIUM

Infrastructure-advantaged



MAVIS LAKE PROJECT



LEGEND

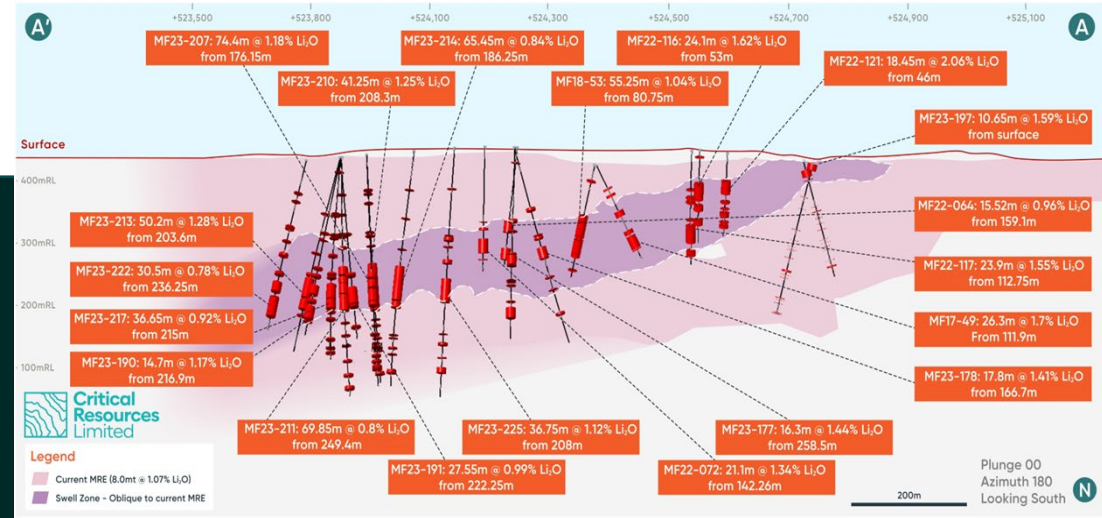
- Country Border
- State Border
- Trans-Canada Hwy
- Railway
- Shipping Lanes
- Hydro Lines
- Natural Gas Pipeline
- Mavis Lake Project Area
- Pegamatite Cluster
- Airport



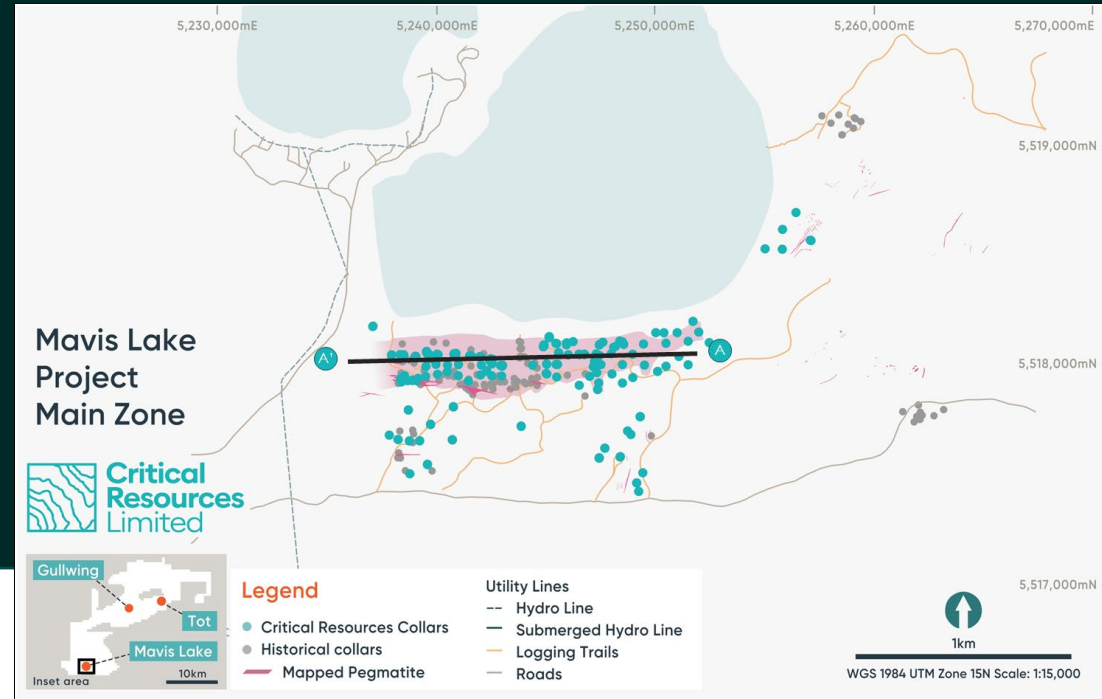
Mavis Lake - Maiden Resource

Significant growth potential

- **Maiden MRE - 8Mt @ 1.07 % Li₂O¹** included drilling results up to 30 March 2023, **substantial expansion potential.**
- **+57,000m drilling completed.** Updated resource model being developed.
- **Thick, high-grade lithium mineralisation over a ~1.1km strike,** starting from surface.
- Drilling confirmed the discovery of lower mineralised stack, which **remains open up-dip and down-dip.**
- **Infrastructure Advantage:** immediate access to highway and rail, clean hydro power, providing a lower-cost development pathway.



Mavis Lake main Zone Long Section³



1. ASX:CRR announcement - Maiden Mineral Resource at Mavis Lake - 5 May 2023



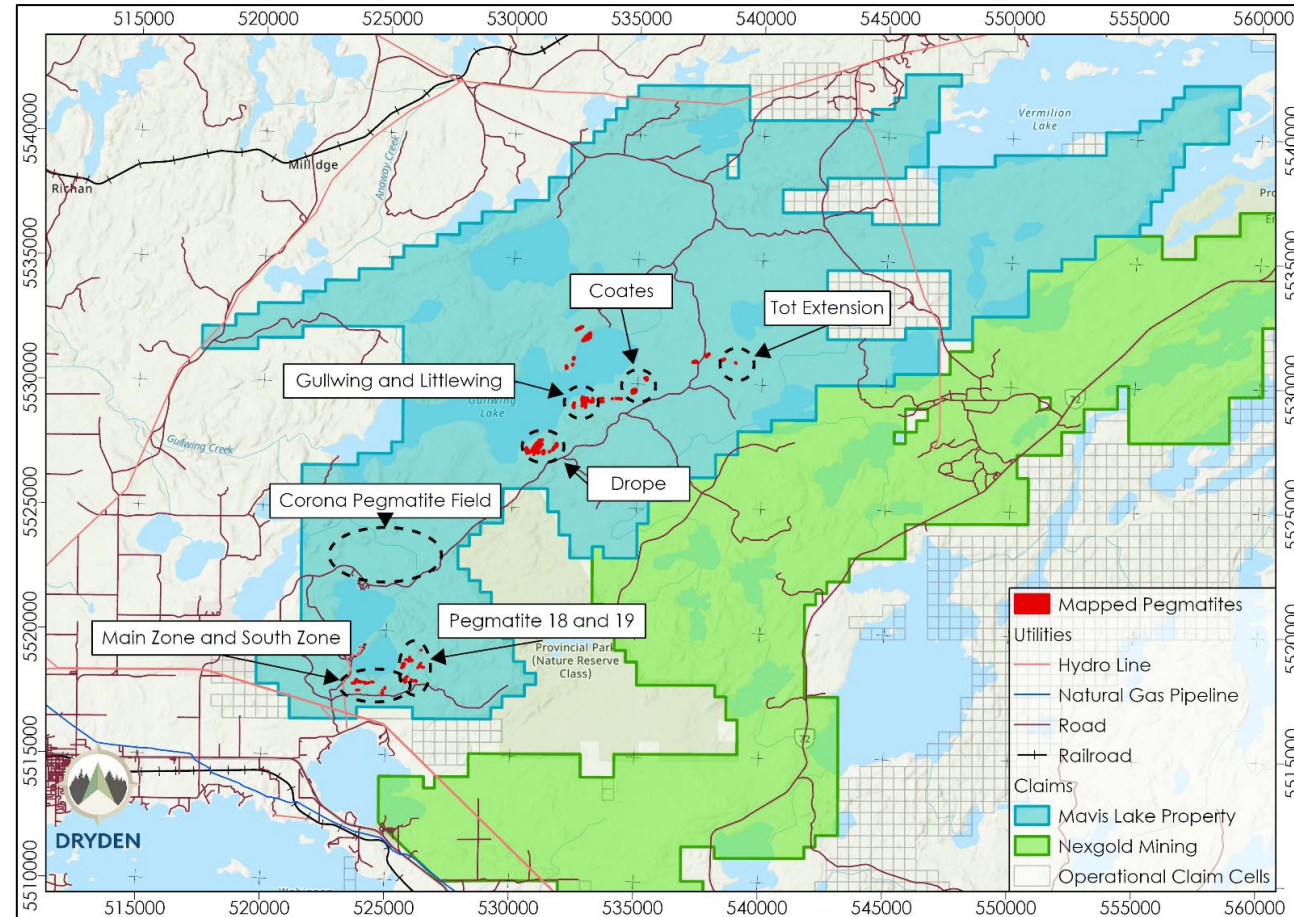
Mavis Lake - Unlocking District Scale

North American Lithium Resource



Critical Resources Limited

- **Exploration Target of 7–10 Mt at 0.3 -1.2% Li₂O¹**
- Extensive land holding with numerous drill-ready targets identified - **Tot, Gullwing and Corona.**
- Exploration standout intercepts²:
 - **74.4m @ 1.18 % Li₂O, incl. 32.9m @ 1.81 % Li₂O (MF23-207)**
 - 20.7m @ 1.21 % Li₂O (MF23-209)
 - 41.3m @ 1.25 % Li₂O (MF23-210)
 - 41.0m @ 1.18 % Li₂O (MF23-211)
 - 50.2m @ 1.28 % Li₂O (MF23-213)
 - 55.0m @ 0.95 % Li₂O, incl. 25.85m @ 1.39 % Li₂O (MF23-214)
- **Northern Prospects** potentially unlock resource growth and development optionality beyond the Mavis Lake Main Zone.



1. ASX announcement - Mavis Lake Exploration Target Highlights Potential for Large-Scale Lithium Project in North-West Ontario - 22 May 2024
 2. ASX:CRR announcement - 2026 Mavis Lake Exploration Programs - 19 January 2026

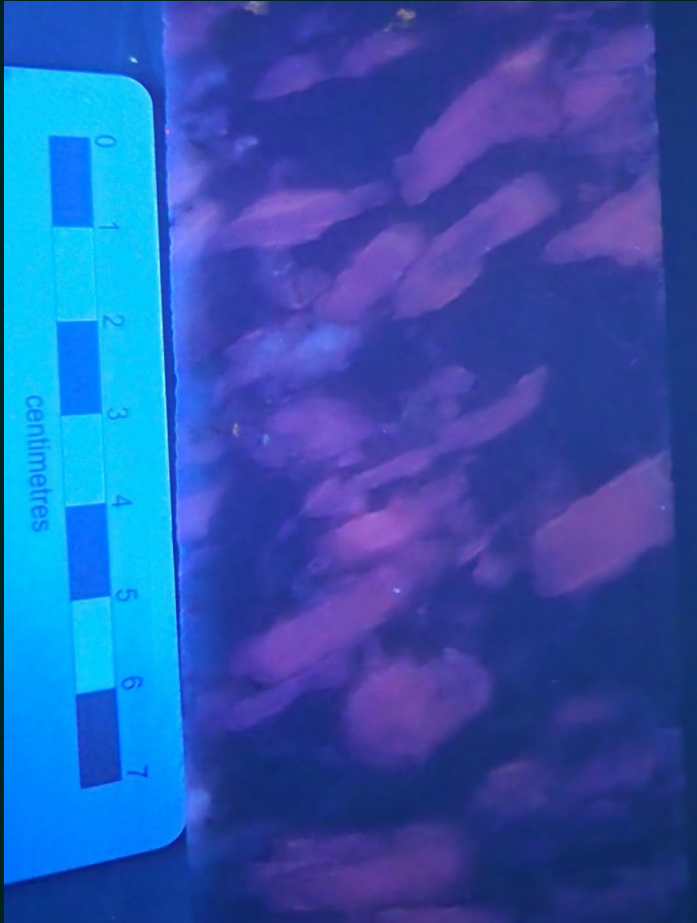


Mavis Lake - Metallurgy

Ready to move to DFS studies



**Critical
Resources
Limited**



- Mineralogy has identified predominantly large spodumene crystals.
- Coarse spodumene mineralisation streamlines processing pathways.
- Heavy Liquid Separation (HLS) delivered **spodumene concentrate up to 6.4 % Li₂O** with very low Fe₂O₃.
- Test work with HLS and flotation delivered recoveries up to 87 %¹.
- **Ore sorting amenability trials completed:** 150 % Li₂O increase for UV sorting and 98 % waste rock rejection from XRT sorting.
- Bulk ore sorting and DMS test work to strengthen flowsheet design and economic parameters.
- Hybrid DMS – staged project approach to minimise upfront CAPEX requirement.

1. ASX:CRR announcement - Exceptional Results From Metallurgical Test Work – up to 87.3% - 3 April 2023



ASX:CRR

Solid-State Lithium-Ion Battery

Evaluation program

South Dakota - US

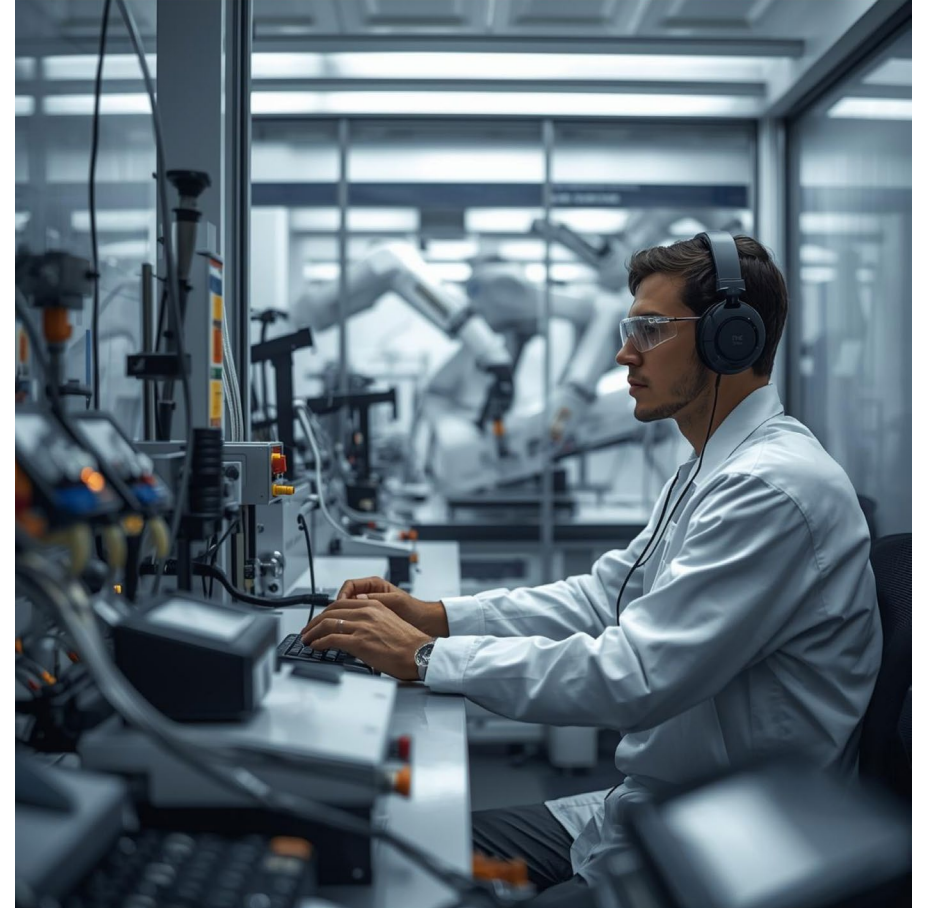
Solid-State
Battery



EXCLUSIVE ACCESS TO U.S. SOLID-STATE IP

Advancing the next evolution of lithium-ion batteries.

- Exclusive option with South Dakota School of Mines & Technology (SDM) to **evaluate next-generation solid-state lithium-ion battery technology**.¹
- **Low-Cost, High-Leverage R&D Model** with evaluation program supported by the American National Science Foundation CEPS.²
- **High-temperature solid-state electrolyte delivering improved stability & thermal resilience** for data centres, industrial storage and defence.³
- **Materials and manufacturing workstreams progressing in parallel.**
- **Integrated value-chain** connect with a global network seeking to secure battery-grade lithium supply. **Enhancing optionality** across partnerships, IP generation and commercial pathways.



1. ASX:CRR announcement - CRITICAL RESOURCES SECURES EXCLUSIVE OPTION TO EVALUATE NEXT-GENERATION SOLID STATE LITHIUM-ION BATTERY TECHNOLOGY – 18 November 2025
2. ASX:CRR announcement - CRITICAL RESOURCES ACCEPTED INTO U.S. SOLID-STATE BATTERY INNOVATION CENTER – CEPS – 2 February 2026
3. ASX:CRR announcement - SOLID-STATE LITHIUM-ION BATTERY EVALUATION PROGRAM – 11 February 2026



Why Solid-State Batteries

Solid-state batteries are safer, higher-energy, and built for high-temperature performance.



Critical Resources Limited

Safer.

No flammable liquid electrolyte.

Higher energy density.

Better power-to-weight performance.

Superior performance.

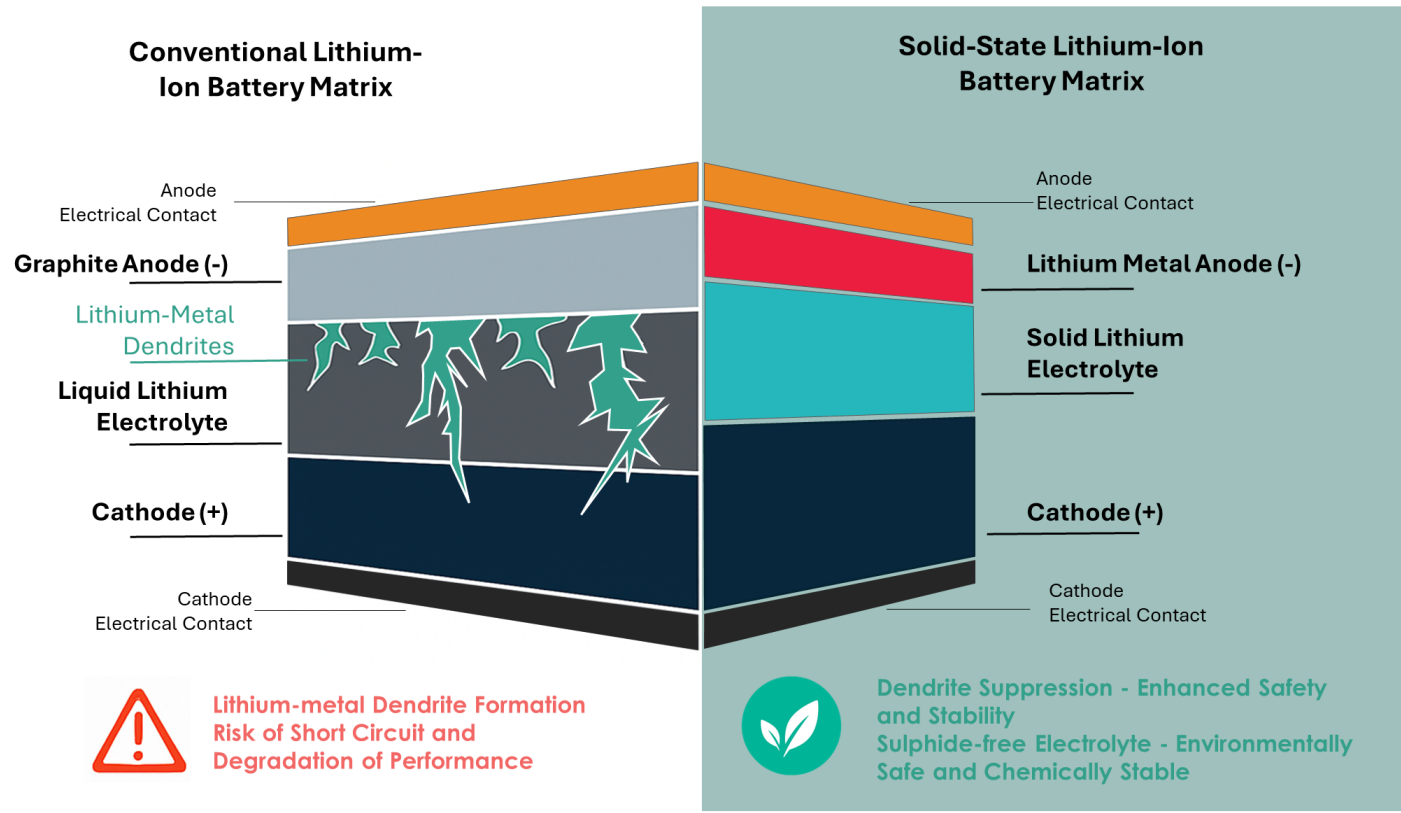
High-temperature environments - data centres, defence and industrial grids.

Longer cycle life.

Reduced degradation provides enhanced reliability.

Faster charging/discharging.

DENDRITE FORMATION DURING FAST CHARGE/DISCHARGE OF CONVENTIONAL LITHIUM-ION BATTERIES



ASX:CRR



Evaluation Program

Pathway to Validation and Prototypes development



**Critical
Resources
Limited**

Program Framework - Low cost and high-impact

Access world-class solid-state battery researchers and advanced infrastructure. Guide early prototype validation.

ASE Program - Solid-State Electrolytes

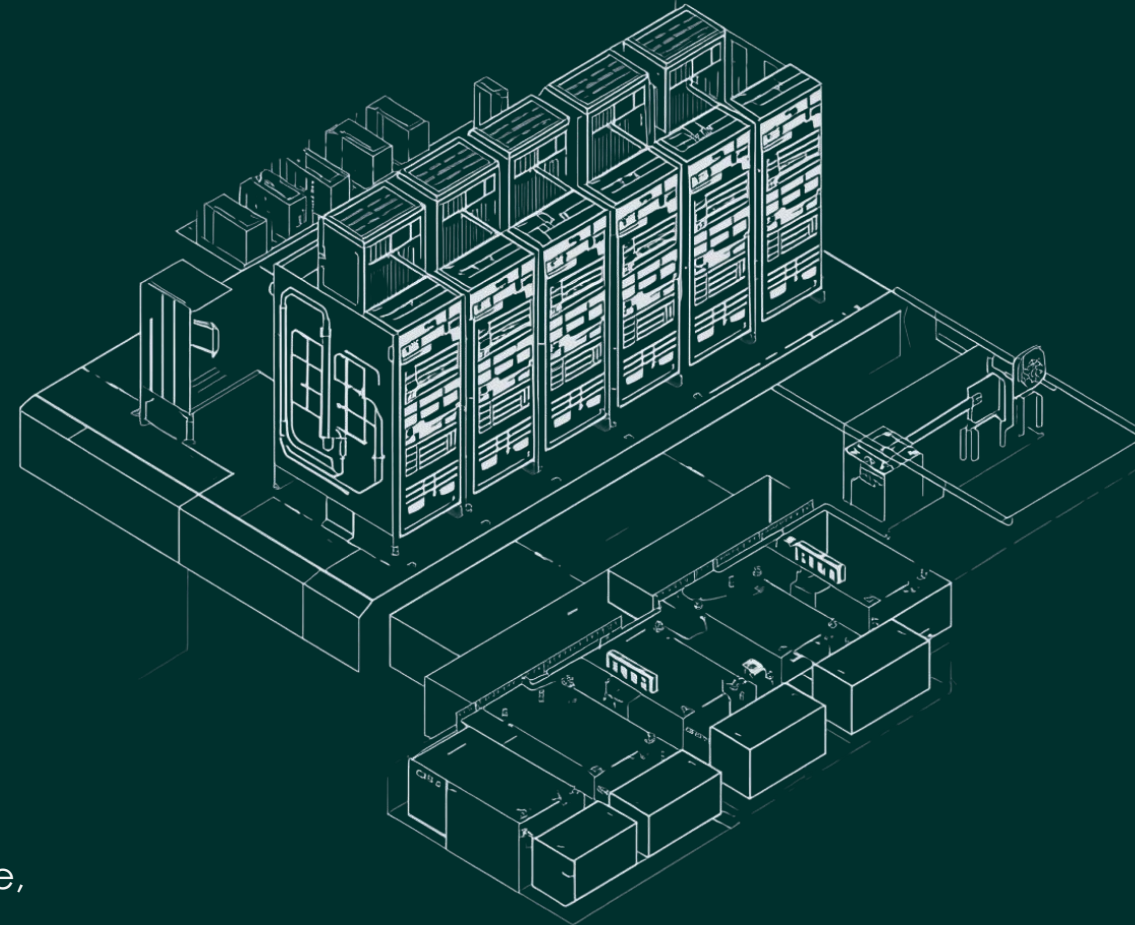
Replacing flammable liquid electrolytes with stable solid-state materials, expands safety and performance across wide operating temperatures.

DSD Program – Advanced Materials Manufacturing

'3D Printing' manufacturing removes the use of toxic solvents providing a cleaner, more scalable pathway for solid-state batteries.

Application Focus

Improved safety, energy density and cycle reliability, supporting growing demands from data centres, defence, mining and other high-temperature, high-reliability applications.



ASX:CRR



High Temperature Electrolytes (ASE)

Expands safety and performance at elevated temperatures



**Critical
Resources
Limited**

Problem:

High Thermal Sensitivity

Performance and lifespan deteriorate at elevated operating temperatures.

Thermal Risk

Flammable liquid electrolytes introduce fire and safety exposure in high-reliability applications.

High Energy Demands

Ineffective use of energy. ~40 % of data centre energy is consumed by cooling.¹



CRR Opportunity:

High Thermal Stability

Engineered for stable electrochemical performance at temperatures exceeding 60°C.

Non-Fire Hazard

Non-flammable solid-state electrolyte architecture materially reduces fire and thermal runaway risk.

Lower Energy Demands

Reduced dependence on active cooling infrastructure, supporting improved energy efficiency.

1. Cooling Systems in Data Centers: State of Art and Emerging Technologies - <https://doi.org/10.1016/j.egypro.2015.12.168>





Dry-Supersonic Deposition (DSD)

Solvent-free manufacturing pathway for scalable solid-state batteries.



Critical Resources Limited

Core challenge.

Scaling the manufacture of solid-state batteries.

Solvent-free dry deposition.

Supersonic particle deposition creating dense layers.

Eliminates toxic solvents.

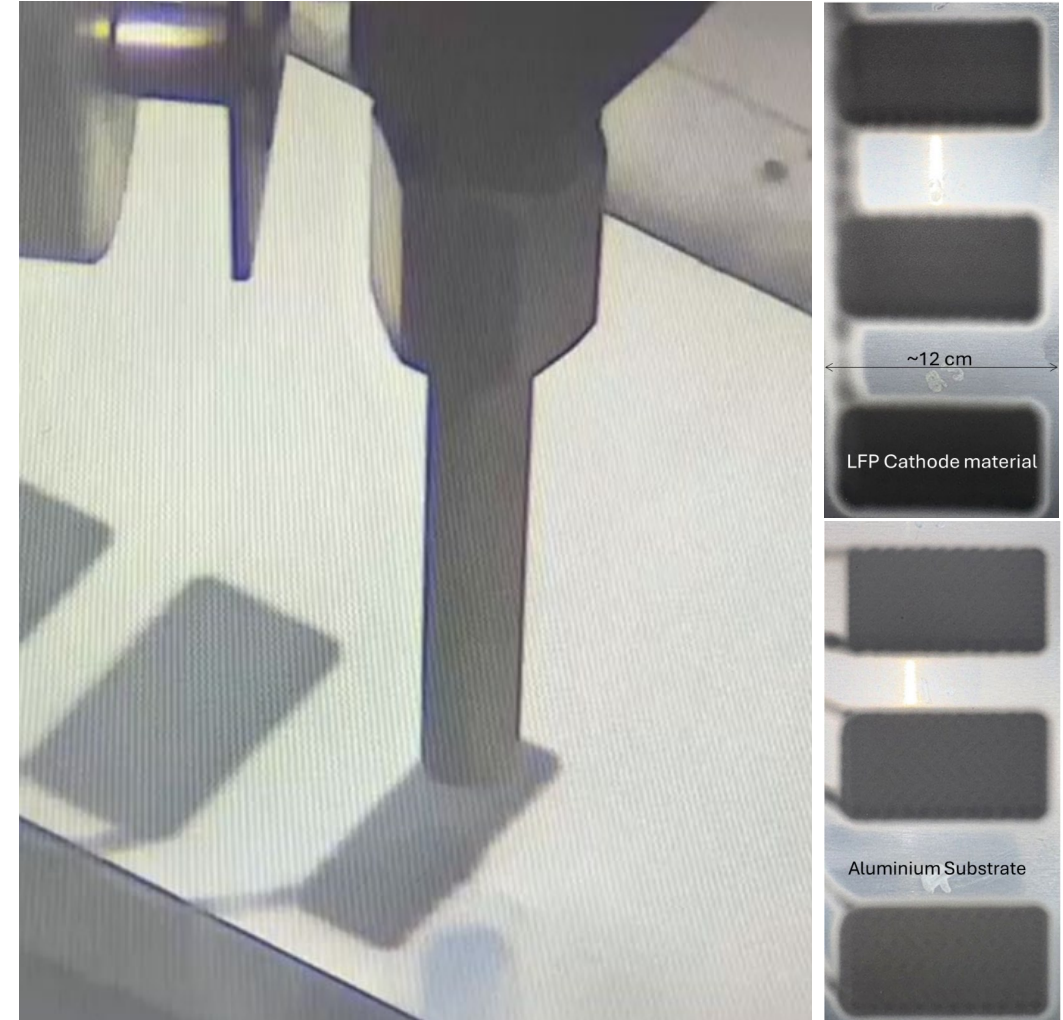
Solvent-free processing reduces energy use and supports scalable manufacturing.

Successful Trials.

Advancing into a structured evaluation program.

Strategic outcomes.

Results to inform prototype development, partnerships and strategic pathways.



Early successful tests of dry-supersonic-deposition (DSD) of Lithium-Iron-Phosphate (LFP) cathode material onto battery pouch cell aluminium foil substrate.



Evaluation to Prototype Validation

Timeline and milestones for the next phase of development and strategic decisions.



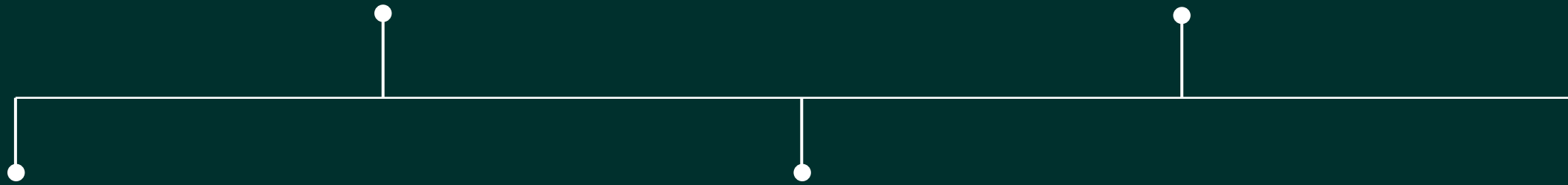
Critical Resources Limited

Technical Validation

Completion of electrolyte selection to support trial cell development and independent third-party assessment.

Commercial Positioning

Enhancing optionality across partnerships, IP generation and future commercial pathways.



Evaluation Phase (Q1-Q2 2026)

Active program at SDM under the NSF-supported CEPS framework focused on material refinement and trial validation.

Prototype Assembly

Integration of the ASE (chemistry) and DSD (manufacturing) workstreams into initial prototype solid-state cell assemblies for laboratory and independent evaluation.

The above activities are limited to technical evaluation and do not imply commercial manufacturing. Outcomes will inform future prototype development and strategic decisions.



ASX:CRR

New Zealand

Gold

Otago & Reefton – South Island



The New Zealand Opportunity

Diverse gold-antimony portfolio to create momentum

- **Outstanding exploration potential** across a Large-scale gold portfolio.
- **Significant scale opportunity:** OceanaGold's +10 Moz Macraes operation¹. 'Power of distribution law' potential with multiple +1 Moz deposits yet to be discovered within the Otago region.
- Breakthrough discovery at Santana Minerals (ASX:SMI) Rise & Shine gold deposit has **renewed the exploration strategy and materially upgraded regional targeting models.**
- **In-Country Support** - New Zealand-based geological group, with links to the discovery and resource growth of the Rise and Shine deposit.
- **Extensive landholding:** 1,795 km² package covers the underexplored gold-antimony belts of Otago and Reefton. Low-holding costs.
- **Tier-1 jurisdiction:** Ranked 12th in the 2025 Fraser Institute Investment Attractiveness Index, with New Zealand's 'Fast Track' permitting processes.

1. Based on OceanaGold Corporation - NI 43-101 Technical Report, Macraes Gold Mine, Otago, New Zealand - March 28, 2024





New Zealand Projects

Diverse gold-antimony portfolio to create momentum

Cap Burn

Otago Region

- **Advanced gold project** ~11 km from OceanaGold's Macraes operation.
- Confirmed gold mineralisation coincident with a large arsenic-in-soil anomaly.
- Structurally analogous to Santana Minerals Rise and Shine - untested at depth.

Silver Peaks

Otago Region

- Large-scale prospect near Macraes, historic Au-Sb structures.
- Underexplored with district-scale potential.

Lammerlaw

Otago Region

- Located on major structural boundary.
- Analogous to Macraes gold system with **mapped gold and tungsten trends**.

Tokomairiro

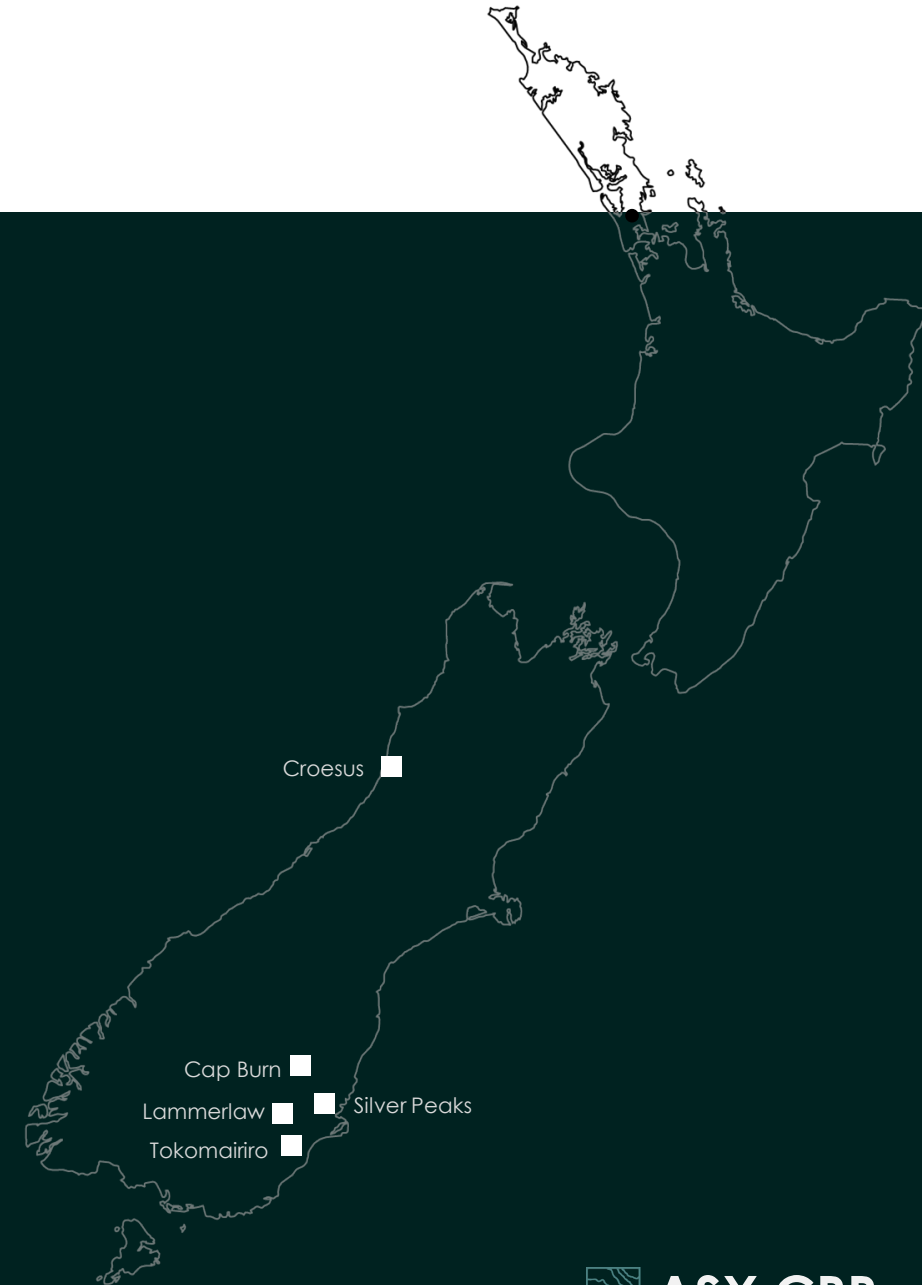
Otago Region

- Historical goldfield - **high-grade rock chip samples up to 135 g/t Au**.
- Multiple reef systems along a broader mineralised trend.

Croesus

Reefton Goldfields

- Located near the Reefton Goldfield, with high-grade gold-antimony veins and tungsten-rich greisen systems.
- Multiple untested structural targets across a 5 km mineralised corridor.





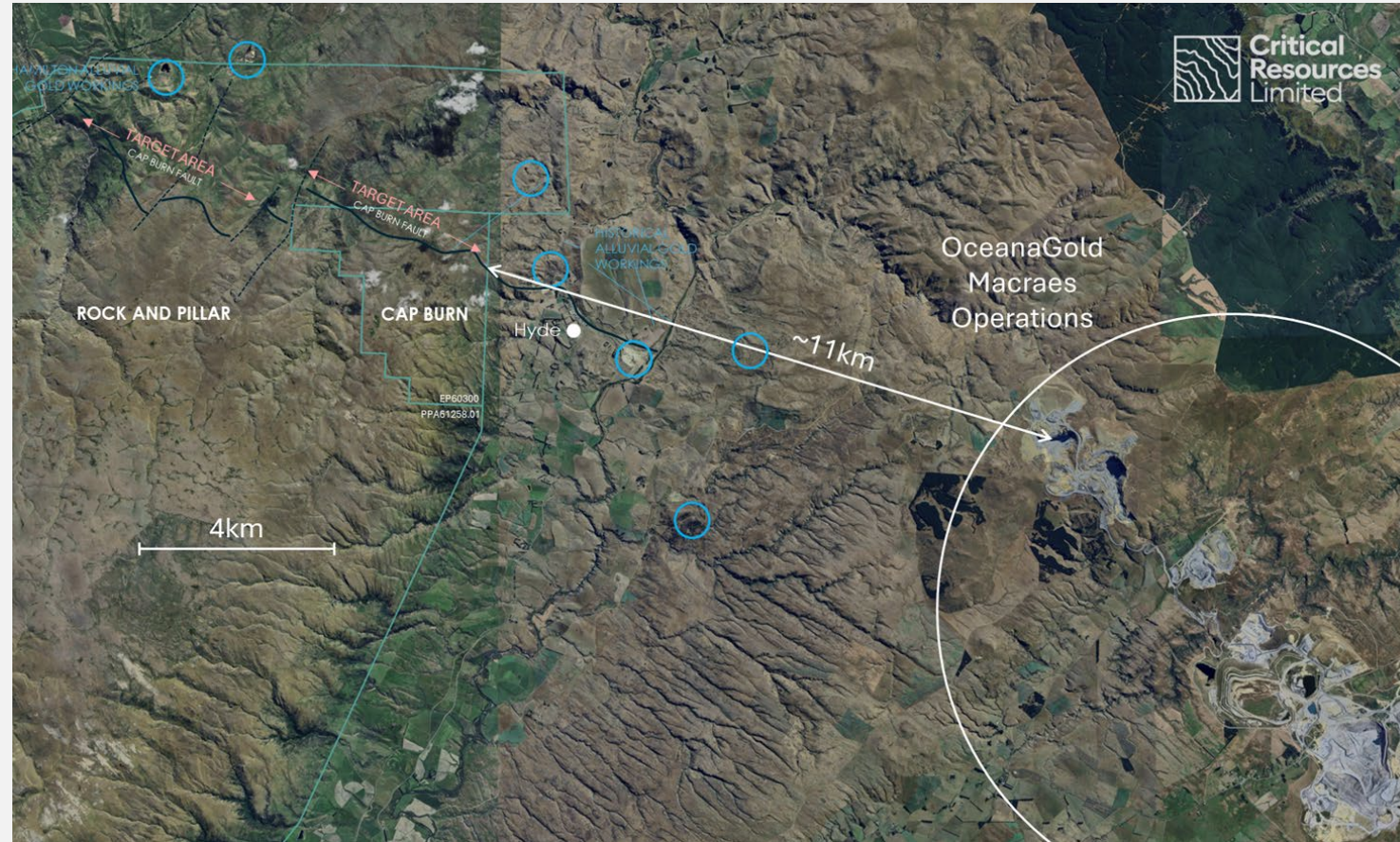
Cap Burn Gold Project

On strike from +10Moz Macraes Operations



Critical Resources Limited

- Located on a major NW–SE shear corridor. Next to OceanaGold’s Macraes +10 Moz Au operations.
- **Underexplored** - Legacy drilling targeted a large arsenic-in-soil anomaly, validating an orogenic gold system.
- **Multiple historic alluvial gold workings** along strike, highlight prospectivity of the area.
- **New structural model leverages Santana Minerals’ Rise and Shine** discovery in 2021¹.
- **Multiple drill targets ~10km of strike** potential.
- Initial phased drill program completed Dec-2025². **Assay results expected late February 2026.**



1. ASX:CRR announcement 6 August 2025
 2. ASX:CRR announcement 22 December 2025



ASX:CRR



Cap Burn – Rise & Shine Analogue

New structural model leverages Santana Minerals' Rise and Shine discovery

Breakthrough factors.

Santana Minerals' Rise and Shine discovery came from a renewed structural model, stepping **down plunge from surface arsenic-in-soil anomalies and low-grade mineralisation.**

Persistence Pays.

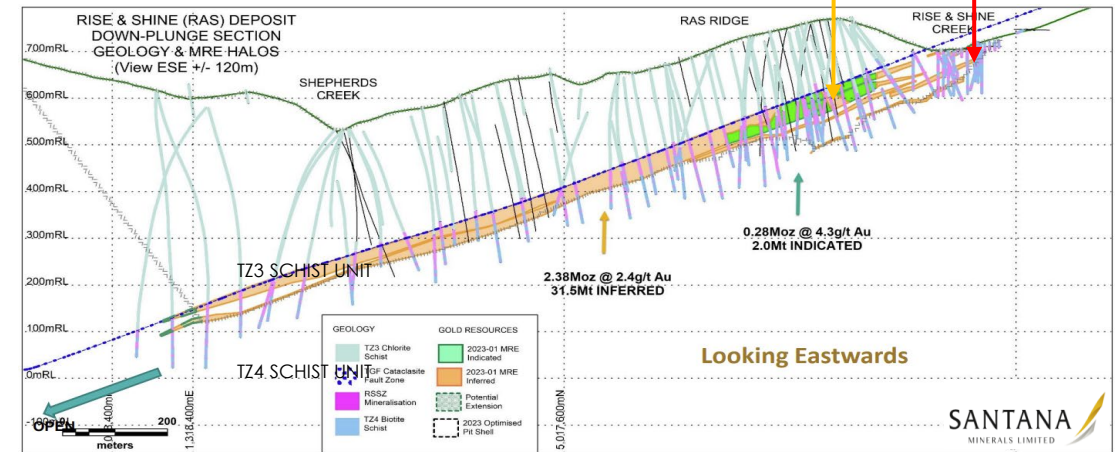
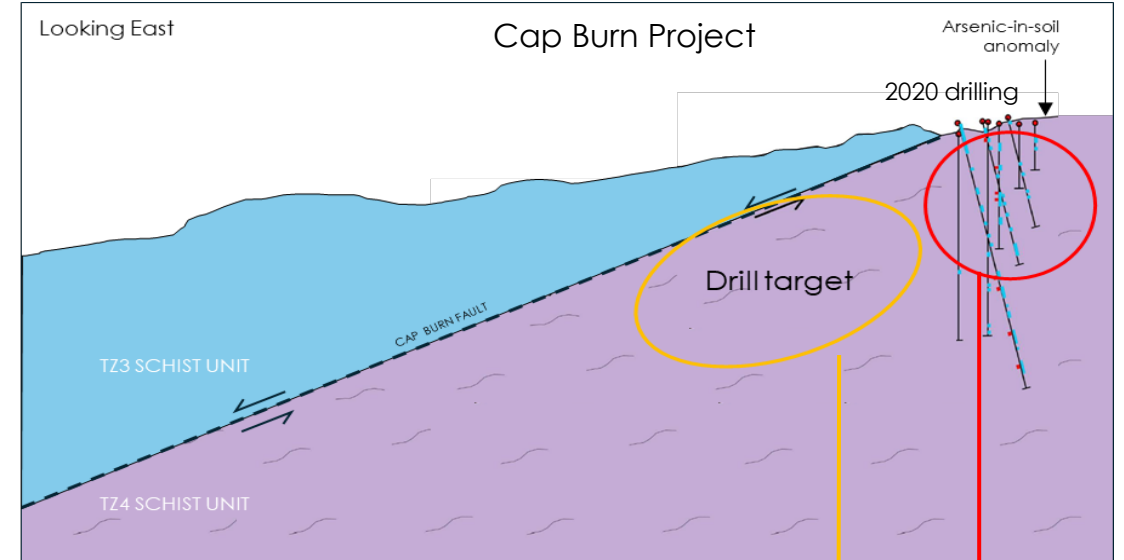
Rise and Shine was discovered (MDD007) in the third exploration phase¹. Committed to drilling through barren cover (TZ3 unit).

Untapped Potential.

Macraes +10 Moz endowment suggests multiple +1 Moz deposits; only Rise and Shine has been discovered. 'Power of distribution law'.

Shareholder Opportunity.

Leveraging learnings from Rise and Shine discovery, testing new geological models through systematic exploration.



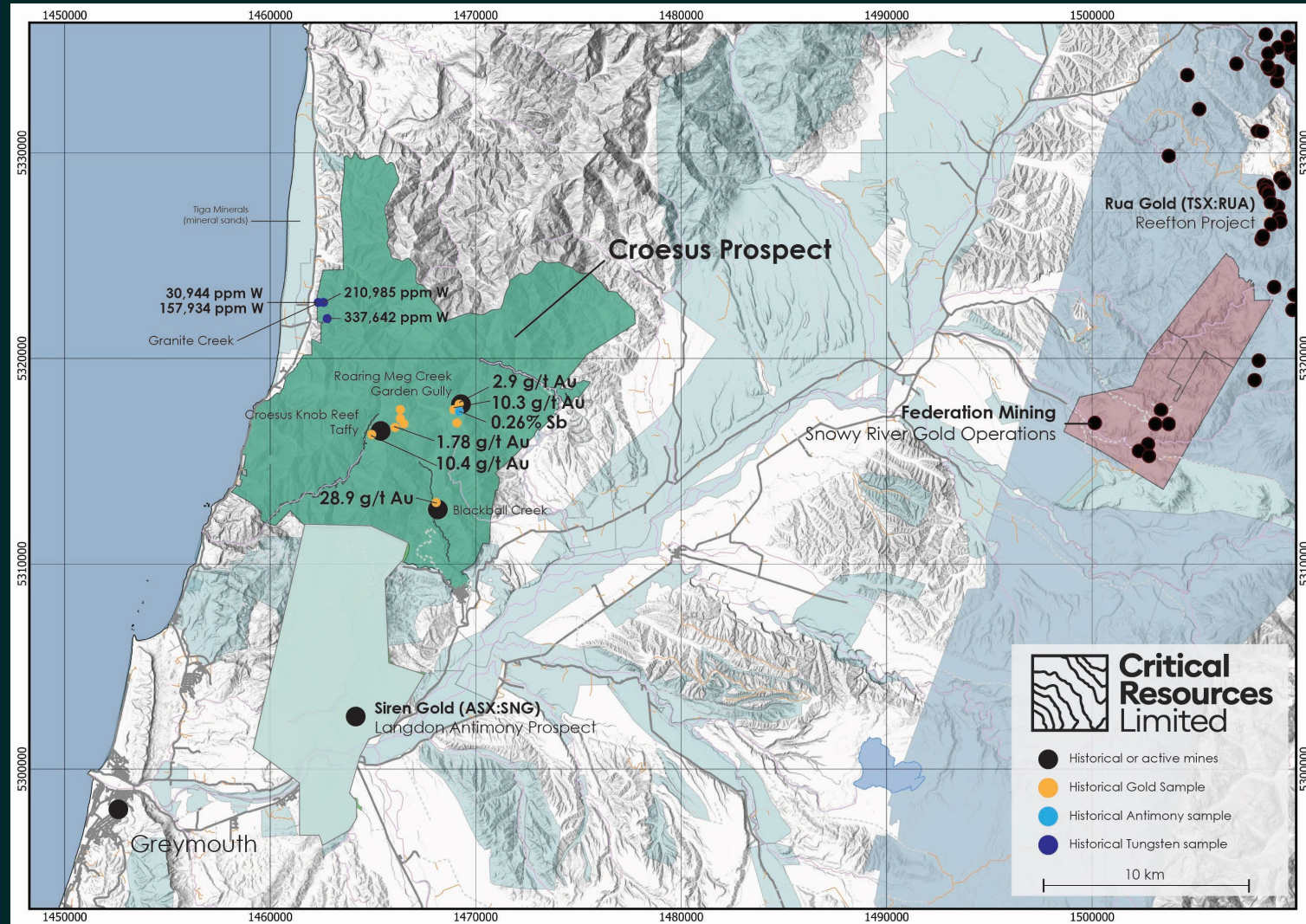
Cap Burn Project cross-section (top) – conceptual down-plunge target at Cap Burn with comparison to Santana Minerals Rise and Shine cross-section (bottom) (Santana Minerals (ASX:SML) August 2023 investor presentation, slide 9) (note: cross sections are not to the same scale)

1. Santana Minerals Limited (ASX: SMI) Announcement 28 April 2021



CROESUS – Reefton Region

High Impact Exploration Target



- Multiple **priority gold-antimony targets**.
- **Antimony reported** in quartz lodes at several localities in the Croesus Knob Reefs.
- **Modern mining resurgence** in Reefton with Federation Mining Snowy River operations, Rua Gold (TSX-V: RUA) and Siren Gold (ASX:SG).
- **Proven potential with several historic gold and antimony mines** within the permit area:
 - Croesus Reef / Taffy
 - Roaring Meg / Garden Gully
- **High-grade confirmed** with rock chip samples up to 28.9 g/t Au and 33.8 % WO₃¹.
- Long history of mining with **established infrastructure and strong community support**.

¹. ASX:CRR announcement 6 August 2025

Halls Peak Project

Gold - Antimony - Base metals

NSW - Australia



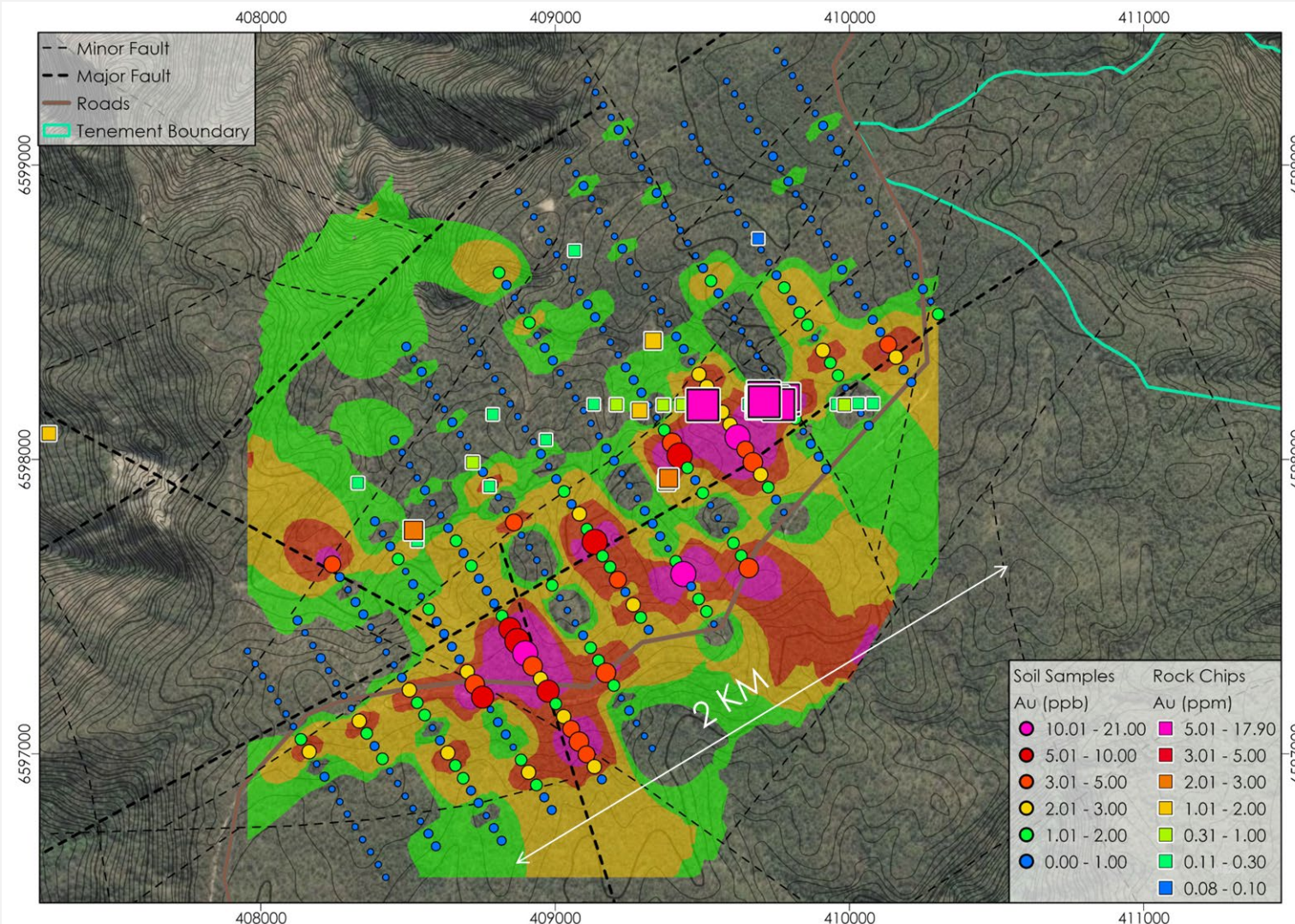
Amoco – Au/Sb

High-grade orogenic gold-antimony system potential



Critical Resources Limited

- **Scale potential.** ~2 km mineralisation corridor¹.
- High-grade surface rock samples - **17.9 g/t Au, 0.7 % Sb** and **53.2 g/t Ag²**.
- ~19 km SE of Larvotto's (ASX:LRV) Hillgrove antimony-gold operations and ~14 km E of Koonenberry Gold (ASX:KNB) Enmore Project - **same structural corridor.**
- Orogenic Au/Sb system potential – Petrographic identified structurally controlled quartz–sulphide veining³.
- Airborne mag identified multiple structures. **Strong correlation with soil-geochemistry.**
- Maiden drill program confirmed orogenic system with strong multi-element, gold up to 0.38 g/t Au, silver up to 22.7 g/t Ag.



¹ ASX:CRR announcement 18 September 2025

² ASX:CRR announcement 4 June 2025

³ ASX:CRR announcement 2 July 2025

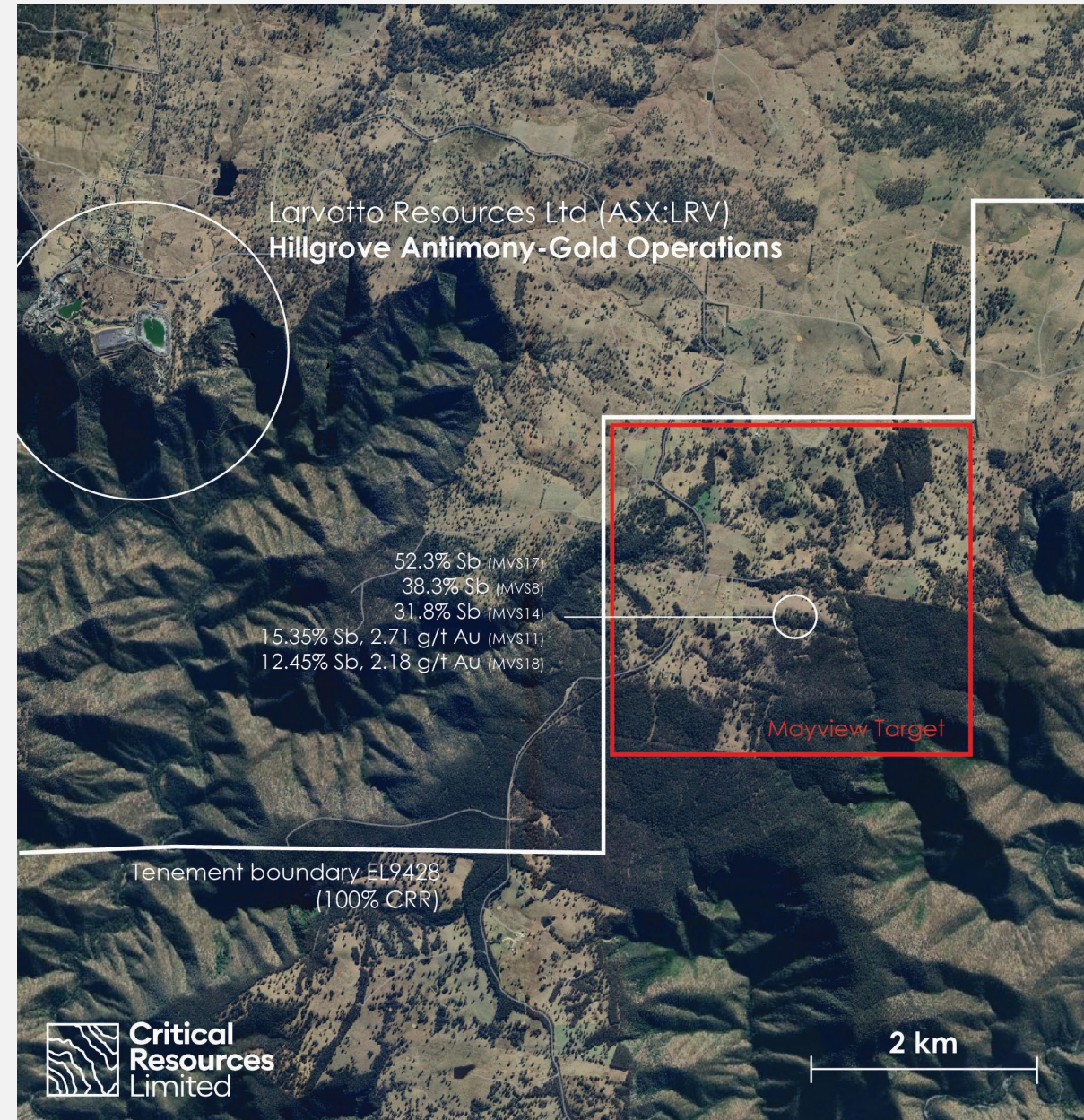
⁴ ASX:CRR announcement 18 September 2025



Mayview – Au/Sb

Emerging target - Potential Hillgrove-style orogenic antimony-gold system

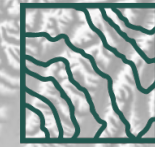
- Located adjacent to Larvotto Resources Limited (ASX:LRV) Hillgrove antimony-gold operations.
- Depressed antimony markets and extended ownership have resulted in a lack of modern exploration activity in the area.
- Numerous historical antimony workings, defining a structural corridor and an immediate exploration target.
- High-grade rock samples from old antimony workings demonstrate a fertile corridor ¹:
 - **52.3 % Sb** (MVS17)
 - **38.3 % Sb** (MVS8)
 - **31.8 % Sb** (MVS14)
 - **15.35 % Sb, 2.71 g/t Au** (MVS11)
 - **12.45 % Sb, 2.18 g/t Au** (MVS18)
- Close to infrastructure and an established mining-friendly community.
- Applications for soil mapping and a maiden drill program are advancing, with **active discussions for a land access agreement ongoing.**



¹. ASX:CRR announcement 16 December 2024



Investment Proposition



01

North American Lithium Resource.

Strategically located lithium resource in Ontario, Canada with immediate access to world-class infrastructure and simple metallurgy.

Low-cost workstreams underway to de-risk and add long-term value.

02

Exceptional pipeline of gold and antimony projects.

Large, low-cost land holdings of early-stage gold-antimony projects in Tier-1 geology and jurisdictions.

Multiple drill targets - High discovery potential.

03

Exposure to upstream lithium battery technology.

Evaluation of next-generation solid-state lithium-ion battery IP in the U.S. Access to low-cost, high-leverage R&D model.

Enhancing optionality across partnerships, IP generation and commercial pathways.

04

Shareholder alignment.

Proven leadership, creating shareholder value across multiple commodities and industries.

Directors and Management hold 11.0 % of CRR.



Mineral Resource Statement



COMPLIANCE STATEMENT

This document contains information relating to the Mineral Resource estimate for the Mavis Lake Lithium Project, extracted from the Company's ASX announcement dated 5 May 2023. The Company confirms that it is not aware of any new information or data that materially affects the information included in the original announcement and that all material assumptions and technical parameters underpinning the Mineral Resource estimate continue to apply. The Mavis Lake MRE includes all applicable drilling results up to and including 29 March 2023. The Mavis Lake MRE has been reported at a cut-off grade of 0.3% Li₂O and an open-pit mining scenario. A Bulk Density of 2.8 has been used for mineralised pegmatite. Estimation has been completed using inverse distance weighting. Resource classification is according to the JORC Code Mineral Resource categories.

This document contains information relating to the Mineral Resource estimate for the Halls Peak Project, which is extracted from the Company's ASX announcement dated 30 June 2023. The Company confirms that it is not aware of any new information or data that materially affects the information included in the original announcement and that all material assumptions and technical parameters underpinning the Mineral Resource estimate continue to apply. The Halls Peak MRE has been reported at a cut-off grade of 2% zinc and an open-pit mining scenario. This yields a total metal value that is potentially economically viable for open-pit mining. The MRE incorporates the reasonable prospects for eventual economic extraction assumed for open-pit mining. Resource classification is according to the JORC Code Mineral Resource categories.

This document contains information on the Cap Burn, Silver Peaks, Lammerlaw, Tokomairiro, Croesus and Rock and Pillar Projects extracted from ASX market announcements dated 6 August 2025, 8 September 2025, 10 September 2025, 4 December 2025 and 22 December 2025 reported in accordance with the 2012 JORC Code and available for viewing at www.criticalresources.com.au. The Company confirms that it is not aware of any new information or data that materially affects the information included in any original ASX market announcement.

This document contains information on the Halls Peak Project extracted from ASX market announcements dated 22 November 2021, 30 June 2023, 28 August 2024, 12 September 2024, 3 October 2024, 8 November 2024, 19 November 2024, 4 December 2024, 16 December 2024, 12 February 2025, 20 March 2025, 4 June 2025, 2 July 2025, 18 September 2025, 1 October 2025, 13 October 2025 and 5 December 2025 reported in accordance with the 2012 JORC Code and available for viewing at www.criticalresources.com.au. The Company confirms that it is not aware of any new information or data that materially affects the information included in any original ASX market announcement.

This document contains information on the Mavis Lake Project extracted from ASX market announcements dated 25 October 2021, 16 June 2022, 21 July 2022, 13 September 2022, 24 October 2022, 25 October 2022, 31 October 2022, 20 December 2022, 29 December 2022, 23 January 2023, 9 February 2023, 27 March 2023, 3 April 2023, 18 May 2023, 16 June 2023, 27 June 2023, 17 July 2023, 24 July 2023, 21 August 2023, 13 September 2023, 19 September 2023, 19 October 2023, 24 October 2023, 2 November 2023, 15 November 2023, 13 February 2024, 18 March 2024, 17 April 2024, 29 May 2024, 2 July 2024, 8 July 2024, 24 July 2024, 22 August 2024, 28 October 2024, 30 October 2024, 2 December 2024, 27 June 2025, 25 August 2025, 3 November 2025 and 27 November 2025 reported in accordance with the 2012 JORC Code and available for viewing at www.criticalresources.com.au. The Company confirms that it is not aware of any new information or data that materially affects the information included in any original ASX market announcement.

All announcements are available for viewing at the Company's website www.criticalresources.com.au.

Mavis Lake Lithium Project - Mineral Resource Estimate

Mavis Lake -Lithium Project JORC Classification	Li ₂ O Cut-Off grade (%)	Tonnage (Mt)	Li ₂ O (%)
Inferred	0.3	8.0	1.07
Total*		8.0	1.07

*Reported at a cut-off grade of 0.30% Li₂O for an open pit mining scenario. Estimation for the model is by inverse distance weighting. Classification is according to JORC Code Mineral Resource categories. Refer to ASX:CRR announcement 5 May 2023.

Halls Peak – Gibson Base Metals Project - Mineral Resource Estimate

Halls Peak Project JORC Classification	Zn Cut-Off grade (%)	Tonnage (Mt)	Zn (%)	Pb (%)	Cu (%)	Ag ppm (g/t)	Au ppm (g/t)
Indicated	-	-	-	-	-	-	-
Inferred	2.0	0.84	3.7	1.5	0.44	30	0.1
Total*	-	0.84	3.7	1.5	0.44	30	0.1

*Reported at a cut-off grade of 2% Zn for an open pit mining scenario. Estimation for the model is from the generation of a rotated block model, with blocks dipping 55>330°. Classification is according to JORC Code Mineral Resource categories. Refer to the ASX:CRR announcement 30 June 2023.



Critical Resources Limited

www.criticalresources.com.au