

26 February 2026

Amended Release - Evergold Gravity Survey Targets Upgraded Gold Potential at Mt Monger

Evergold Minerals Limited (ASX: EG1) (“Evergold” or “the Company”) refers to its recent release titled “Evergold Gravity Survey Targets Upgraded Gold Potential at Mt Monger” on 20 February 2026 (Original Release). Following discussions with the ASX, the Company advises that:

- In respect to the ASX request for clarification on the processes that the Fleet Space Technologies Comet™ Study used to interpret the hydrothermal system from multi-element rock analysis, EG1 is unable to provide this information;
- as a consequence of the above, Comet™, being a trademark process of Fleet Space Technologies and Dr Scott Haley, the additional information for preparation and completion of a JORC 2012 Table 1 Section 1 is not able to be sourced by EG1; and
- therefore, the portion of the Original Release that included discussions on the Comet™ work has been retracted. The Company retracts its previous disclosure regarding the Comet study and that investors should not rely on the information concerning the Comet study when making investment decisions.

As a result of the abovementioned matters, the Company has amended its Original Release to the attached updated announcement.

This announcement is approved for release by the Board of Evergold Minerals Limited

FOR FURTHER INFORMATION, PLEASE CONTACT:

COMPANY

Glenn Grayson
Director
E. glenn@evergreenlithium.com.au

MEDIA & INVESTOR RELATIONS

Melissa Tempra
NWR Communications
E. melissa@nwrcommunications.com.au

ABOUT EVERGOLD MINERALS

Evergold Minerals Limited (ASX: EG1) is an Australian exploration company focused on gold discovery and development in proven Tier-1 mining districts. The company holds a portfolio of high-quality gold projects in Western Australia's Goldfields region:

- Leonora Goldfields Project - hosts a JORC Inferred resource of 63,000 oz Au with high-grade historical intercepts (e.g. 5m @ 57.9 g/t Au); preparing inaugural drilling for resource expansion and upgrade.
- Mt Monger Gold Project - features wide historic intercepts (e.g. 40m @ 2.49 g/t Au at Kiaki Soaks, multiple high-grade zones at Duchess of York); maiden RC drilling approved and imminent targeting key prospects.

EverGold Minerals Limited

ASX: EG1 | ABN 17 656 722 397

Suite 205, 9-11 Claremont Street, South Yarra 3141

P: 1300 288 664 (Automatic) E: info@evergold.au W: evergold.au

Competent Persons Statement

The information in this release that relates to Exploration Results or Mineral Resources is based on information compiled by Glenn Grayson who is a Member of the Australian Institute of Mining and Metallurgy (AusIMM). Mr. Grayson has sufficient experience that is relevant to the style of mineralisation and type of deposit under consideration and to the activity being undertaken to qualify as a Competent Person as defined in the 2012 Edition of the 'Australasian Code for Reporting of Exploration Results, Mineral Resources and Ore Reserve'. Mr. Grayson consents to the inclusion in the release of the matters based on his information in the form and context in which it appears. All exploration results reported have previously been released to ASX. The Company confirms it is not aware of any new information that materially affects the information included in the original announcement. The Company confirms that the form and context in which the Competent Person's findings are presented have not been materially modified from the original announcements.

Forward Looking Statements

This announcement may contain certain forward-looking statements and projections. Such forward-looking statements/projections are estimates for discussion purposes only and should not be relied upon. Forward-looking statements/projections are inherently uncertain and may therefore differ materially from results ultimately achieved. Evergold Minerals Limited does not make any representations and provides no warranties concerning the accuracy of the projections and disclaims any obligation to update or revise any forward-looking statements/projects based on new information, future events or otherwise except to the extent required by applicable laws. While the information contained in this report has been prepared in good faith, neither Evergold Minerals Limited or any of its directors, officers, agents, employees or advisors give any representation or warranty, express or implied, as to the fairness, accuracy, completeness or correctness of the information, opinions and conclusions contained in this announcement.

Gravity Survey Underway at Mount Monger to Identify Gold Targets

HIGHLIGHTS

- High-resolution ground gravity survey underway to map density contrasts linked to an interpreted gold system that feeds into the prime Duchess of York Prospect
- The next phase of the geophysical campaign involves 3D inversion modelling which combines gravity and magnetic data to refine drill targeting across the central corridor
- Concurrently, an auger geochemical campaign is set to launch in coming weeks, targeting dispersion halos above concealed intrusions and fault intersections – a key vectoring step in unlocking a fuller extent of the system’s footprint
- An application for a deep diamond drillhole, designed to test the interpreted sanukitoid intrusive source for the gold mineralisation at depth, with EIS co-funding has been lodged with the regulator

Evergold Minerals Limited (ASX: EG1) (“Evergold” or “the Company”) is pleased to announce that a high-resolution ground gravity survey has commenced across the Mount Monger Gold Project (Figure 2), located ~70 km southeast of Kalgoorlie, WA. The program is designed to refine the shape and depth of a dense interpreted gold system from recent geochemical and mineralogical work.

Evergold Non-Executive Director Glenn Grayson comments: *“The commencement of the gravity survey marks the first step in a focused exploration campaign to test what we now believe is a large, sanukitoid-driven gold system at the Mount Monger Gold Project. With upcoming auger and drilling programs soon to follow, we’re entering a highly active phase across a significantly upgraded target gold corridor at Mount Monger.”*

“Following the very successful capital raise our geology team are planning to get on with the job of exploring and developing our projects.”

The gravity field data is being collected on a 100m spaced grid over the Duchess of York prospect (Figures 1 and 3) and will help Evergold's geologists with determining the underlying geology.

Gravity Survey to Generate 3D Confidence

This detailed ground gravity survey will feed into 3D inversion modelling, which—when integrated with existing magnetics—will be used to constrain the geometry and depth extent of the interpreted mineralised system (*sanukitoid intrusive*). This modelling will directly inform final targeting for deep diamond drilling designed to intersect the core of the system.

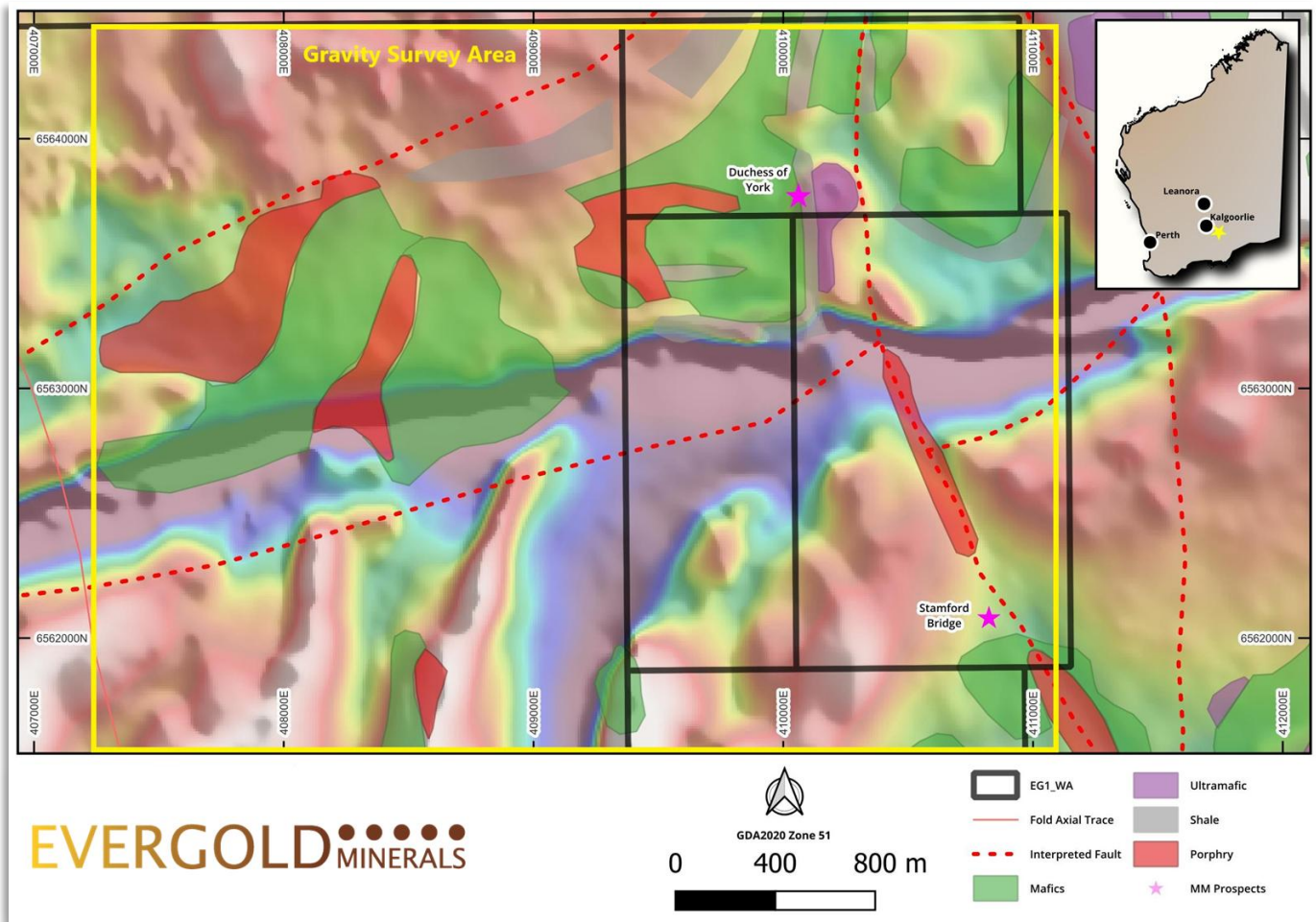


Figure 1: Mt Monger Gravity Survey¹ location over a magnetic image. The yellow box is the area of the ground gravity survey.

Drilling to Shortly Commence

An RC drilling campaign at the Duchess of York Prospect is due to commence in late March.

Footnote 1: Aerial Magnetic Image on Figure 1 - Total Magnetic Intensity - Reduced to Pole with North-East Sun Shading and Non-Linear Colour Stretch (RTP_NEShade_NL). Derived from airborne magnetic data acquired by Fugro Airborne Surveys (FAS Job No. 2047) for Fairstar Resources Limited over the Killara / Kurnalpi / Duchess Project areas, Western Australia, June-July 2009. Data collected using a Scintrex CS-2 caesium vapour magnetometer at 40 m nominal terrain clearance. Killara area flown at 100 m line spacing (N-S), Kurnalpi and Duchess at 50 m line spacing (E-W). Final TMI grids produced at 20 m cell size (Killara) and 10 m cell size (Kurnalpi/Duchess) using a bi-directional spline algorithm following IGRF correction, diurnal correction, tie-line levelling and micro-levelling. Datum: GDA94; Projection: MGA Zone 50 (Killara) / MGA Zone 51 (Kurnalpi and Duchess). Image re-processed by Southern Geoscience, October 2025.



Figure 21: Gravity Survey Underway at Mt Monger

Next Steps

Evergold will be executing a comprehensive and systematic exploration campaign over its three gold projects, Mt Monger, Leonora and Bynoe:

- First-pass geochemical sampling program shortly to be underway across the recently acquired Randwick Project.
- Targeted Auger drilling across regional hydrothermal targets at the Mt Monger Gold Project.
- High-resolution magnetics are planned to delineate structural architecture and highlight targets at the Craig's Rest Prospect in Leonora.
- RC target definition drilling to commence at the Duchess of York Prospect within the Mt Monger Gold Project.
- Stratigraphic Diamond drilling planned for Q4 at the Mt Monger Gold Project.
- Resource upgrade RC drilling at Victor Bore and Craig's Rest Prospects in Leonora.
- Follow-up RC Drilling at Bynoe Ridge.

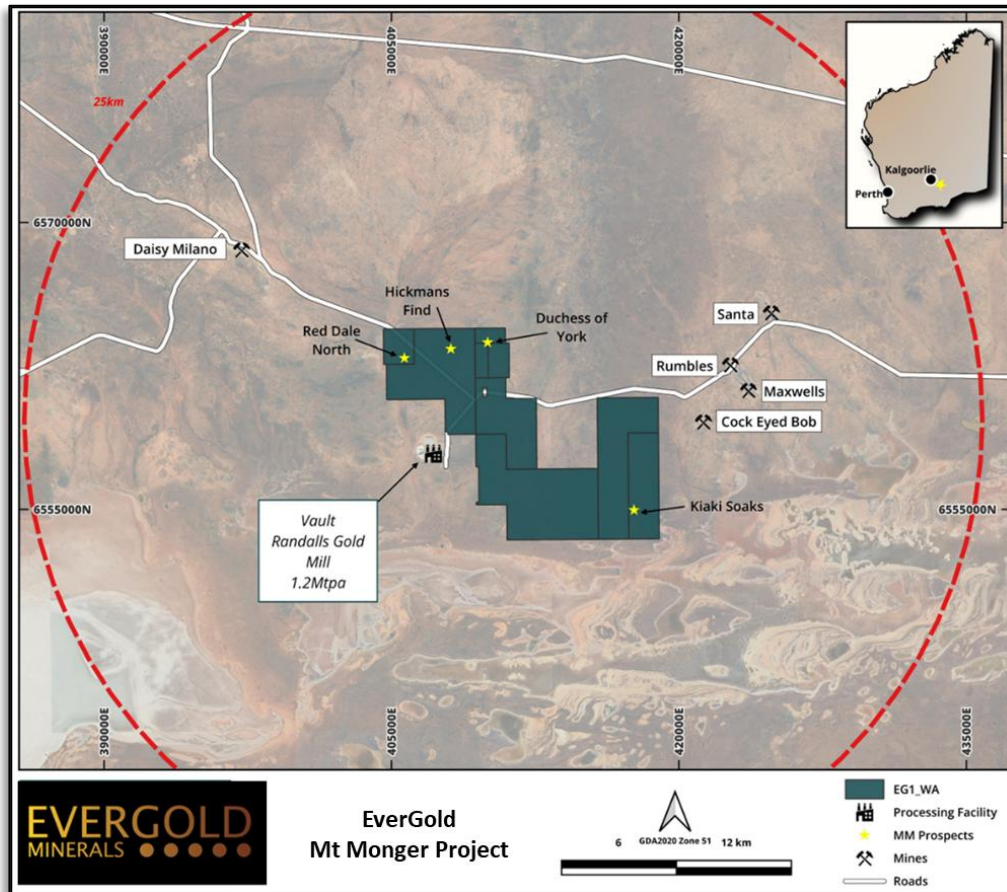


Figure 3: Mt Monger Gold Project District Location MAP

This announcement is approved for release by the Board of Evergold Minerals Limited

FOR FURTHER INFORMATION, PLEASE CONTACT:

COMPANY

Glenn Grayson
 Non-Executive Director
 E. glenn@evergold.au

MEDIA & INVESTOR RELATIONS

Melissa Tempra
 NWR Communications
 E. melissa@nwrcommunications.com.au

ABOUT EVERGOLD MINERALS

Evergold Minerals Limited (ASX: EG1) is an Australian exploration company focused on gold discovery and development in proven Tier-1 mining districts. The company holds a portfolio of high-quality gold projects in Western Australia's Goldfields region:

Leonora Goldfields Project - hosts a JORC Inferred resource of 63,000 oz Au with high-grade historical intercepts (e.g. 5m @ 57.9 g/t Au); preparing inaugural drilling for resource expansion and upgrade.

Mt Monger Gold Project - features wide historic intercepts (e.g. 40m @ 2.49 g/t Au at Kiaki Soaks, multiple high-grade zones at Duchess of York); maiden RC drilling approved and imminent targeting key prospects.

Competent Persons Statement

The information in this release that relates to Exploration Results or Mineral Resources is based on information compiled by Glenn Grayson who is a Member of the Australian Institute of Mining and Metallurgy (AusIMM). Mr Grayson has sufficient experience that is relevant to the style of mineralisation and type of deposit under consideration and to the activity being undertaken to qualify as a Competent Person as defined in the 2012 Edition of the 'Australasian Code for Reporting of Exploration Results, Mineral Resources and Ore Reserve'. Mr Grayson consents to the inclusion in the release of the matters based on his information in the form and context in which it appears. All exploration results reported have previously been released to ASX. The Company confirms it is not aware of any new information that materially affects the information included in the original announcement. The Company confirms that the form and context in which the Competent Person's findings are presented have not been materially modified from the original announcements.

Forward Looking Statements

This announcement may contain certain forward-looking statements and projections. Such forward looking statements/projections are estimates for discussion purposes only and should not be relied upon. Forward looking statements/projections are inherently uncertain and may therefore differ materially from results ultimately achieved. Evergreen Lithium Limited does not make any representations and provides no warranties concerning the accuracy of the projections and disclaims any obligation to update or revise any forward-looking statements/projects based on new information, future events or otherwise except to the extent required by applicable laws. While the information contained in this report has been prepared in good faith, neither Evergreen Lithium Limited or any of its directors, officers, agents, employees or advisors give any representation or warranty, express or implied, as to the fairness, accuracy, completeness or correctness of the information, opinions and conclusions contained in this announcement.

APPENDIX 1 - JORC Code, 2012 Edition - Table 1

Section 1 - Sampling Techniques and Data

(Criteria in this section apply to all succeeding sections.)

Criteria	JORC Code explanation	Commentary
Sampling techniques	<ul style="list-style-type: none"> Nature and quality of sampling (e.g. cut channels, random chips, or specific specialised industry standard measurement tools appropriate to the minerals under investigation, such as down hole gamma sondes, or handheld XRF instruments, etc). These examples should not be taken as limiting the broad meaning of sampling. Include reference to measures taken to ensure sample representivity and the appropriate calibration of any measurement tools or systems used. Aspects of the determination of mineralisation that are Material to the Public Report. In cases where 'industry standard' work has been done this would be relatively simple (e.g. 'reverse circulation drilling was used to obtain 1 m samples from which 3 kg was pulverised to produce a 30 g charge for fire assay'). In other cases more explanation may be required, such as where there is coarse gold that has inherent sampling problems. Unusual commodities or mineralisation types (e.g. submarine nodules) may warrant disclosure of detailed information. 	<ul style="list-style-type: none"> Mt Monger: <ul style="list-style-type: none"> Comet Study was utilized using data from historic RC Samples from Fresh Rock assayed with 4 Acid Digest. Conventional Reverse Circulation (RC) percussion drilling was used to obtain representative 1 metre samples of approximately 1.5kg using a rig-mounted cyclone and cone splitter. The remaining material from each metre was collected from the cyclone as a bulk sample of approximately 15-20kg. Bulk samples from each meter interval were spear sampled and combined to form a 3 metre composite sample of approximately 3kg. In the laboratory, all samples are riffle split if required, then pulverised to a nominal 85% passing 75 microns to obtain a homogenous sub-sample for assay. Sampling was carried out under MTM's standard protocols and QAQC procedures and is considered standard industry practice. Drillhole information can be located in WAMEX reports: <ul style="list-style-type: none"> A70653 A70802 A70823 A56424 A60936 A65396 A66656 A71419 A92264 A70415 A45072 A59739 A65332 A66650 A74507 A79537 A80491 A82659 A82844 A84340 A84735 A84957 A85375 A92097 A92264 A94343 A95899 A96422 A98747 A104012 A104013 A107961 110783
Drilling techniques	<ul style="list-style-type: none"> Drill type (e.g. core, reverse circulation, open-hole hammer, rotary air blast, auger, Bangka, sonic, etc) and details (e.g. core diameter, triple or standard tube, depth of diamond 	<ul style="list-style-type: none"> Mt Monger: <ul style="list-style-type: none"> RC percussion drilling was completed using a 4.5 to 5 inch face sampling hammer bit.

Criteria	JORC Code explanation	Commentary
	<i>tails, face-sampling bit or other type, whether core is oriented and if so, by what method, etc).</i>	
<i>Drill sample recovery</i>	<ul style="list-style-type: none"> • <i>Method of recording and assessing core and chip sample recoveries and results assessed.</i> • <i>Measures taken to maximise sample recovery and ensure representative nature of the samples.</i> • <i>Whether a relationship exists between sample recovery and grade and whether sample bias may have occurred due to preferential loss/gain of fine/coarse material.</i> 	<ul style="list-style-type: none"> • Mt Monger: <ul style="list-style-type: none"> • RC percussion drill samples recoveries were assessed visually. • Recoveries remained relatively consistent throughout the program and are estimated to be 100% for 95% of drilling. • Poor (low) recovery intervals were logged and entered into the drill logs. • The cone splitter was routinely cleaned and inspected during drilling. • Care was taken to ensure calico samples were of consistent volume. • Assays are not yet available to assess whether any sample bias exists.
<i>Logging</i>	<ul style="list-style-type: none"> • <i>Whether core and chip samples have been geologically and geotechnically logged to a level of detail to support appropriate Mineral Resource estimation, mining studies and metallurgical studies.</i> • <i>Whether logging is qualitative or quantitative in nature. Core (or costean, channel, etc) photography.</i> • <i>The total length and percentage of the relevant intersections logged.</i> 	<ul style="list-style-type: none"> • Mt Monger: <ul style="list-style-type: none"> • RC percussion samples were logged geologically on a one metre interval basis, including but not limited to: recording colour, weathering, regolith, lithology, veining, structure, texture, alteration and mineralisation (type and abundance). • Logging was at a qualitative and quantitative standard appropriate for RC percussion drilling and suitable to support appropriate future Mineral Resource studies. • Representative material was collected from each RC percussion drill sample and stored in a chip tray. These chip trays were transferred to a secure Company storage facility located in Kalgoorlie. • All holes and all relevant intersections were geologically logged in full.
<i>Sub-sampling techniques and sample preparation</i>	<ul style="list-style-type: none"> • <i>If core, whether cut or sawn and whether quarter, half or all core taken.</i> • <i>If non-core, whether riffled, tube sampled, rotary split, etc and whether sampled wet or dry.</i> • <i>For all sample types, the nature, quality and appropriateness of the sample preparation technique.</i> • <i>Quality control procedures adopted for all sub-sampling stages to maximise representivity of samples.</i> • <i>Measures taken to ensure that the sampling is representative of the in-situ material collected, including for instance results for field duplicate/second-half sampling.</i> • <i>Whether sample sizes are appropriate to the grain size of the material being sampled.</i> 	<ul style="list-style-type: none"> • Mt Monger: <ul style="list-style-type: none"> • 1m bulk samples recovered from the drill rig cyclone were spear sampled and combined to make 3m composite samples. • >95% of the samples were dry in nature. • RC percussion samples were weighed, dried and pulverized to 85% passing 75 microns. This is considered industry standard and appropriate. • MTM has its own internal QAQC procedure involving the use of certified reference materials (standards), blanks and field duplicates which account for approximately 5% of the total submitted samples. • The sample sizes are considered appropriate for the style of precious metal mineralisation previously recorded for the area.
<i>Quality of assay data and laboratory tests</i>	<ul style="list-style-type: none"> • <i>The nature, quality and appropriateness of the assaying and laboratory procedures used and whether the technique is considered partial or total.</i> • <i>For geophysical tools, spectrometers, handheld XRF instruments, etc, the parameters used in determining the analysis including instrument make and model, reading times, calibrations factors applied and their derivation, etc.</i> 	<ul style="list-style-type: none"> • Mt Monger: <ul style="list-style-type: none"> • All 3m composite drilling samples have been submitted for assay a multi-element suite using multi-acid (4 acid) digestion with an ICP/AES finish and with a 50g Fire Assay for gold with an AAS finish. • The assay techniques are considered appropriate and are industry best standard. • The techniques are considered to be a near total digest, only the most resistive minerals are only partially dissolved.

Criteria	JORC Code explanation	Commentary
	<ul style="list-style-type: none"> <i>Nature of quality control procedures adopted (e.g. standards, blanks, duplicates, external laboratory checks) and whether acceptable levels of accuracy (i.e. lack of bias) and precision have been established.</i> 	<ul style="list-style-type: none"> An internal QAQC procedure involving the use of certified reference materials (standards), blanks and duplicates accounts for approximately 8% of the total submitted samples. The certified reference materials used have a representative range of values typical of low, moderate and high grade gold mineralisation. Standard results for drilling demonstrated assay values are both accurate and precise. Blank results demonstrate there is negligible cross-contamination between samples. Duplicate results suggest there is reasonable repeatability between samples. Comet Study was completed using historic assay data collected by 4 Acid Digest.
Verification of sampling and assaying	<ul style="list-style-type: none"> <i>The verification of significant intersections by either independent or alternative company personnel.</i> <i>The use of twinned holes.</i> <i>Documentation of primary data, data entry procedures, data verification, data storage (physical and electronic) protocols.</i> <i>Discuss any adjustment to assay data.</i> 	<ul style="list-style-type: none"> Mt Monger: <ul style="list-style-type: none"> Significant intersections have not been verified. No dedicated twin holes have yet been drilled for comparative purposes. Primary data was collected via digital logging hardware and software using in-house logging methodology and codes. Logging data was sent to the Perth based office where the data was validated and entered into an industry standard master database maintained by the MTM database administrator.
Location of data points	<ul style="list-style-type: none"> <i>Accuracy and quality of surveys used to locate drill holes (collar and down-hole surveys), trenches, mine workings and other locations used in Mineral Resource estimation.</i> <i>Specification of the grid system used.</i> <i>Quality and adequacy of topographic control.</i> 	<ul style="list-style-type: none"> Mt Monger: <ul style="list-style-type: none"> Hole collar locations are surveyed prior to rehabilitation with handheld GPS instruments with accuracy $\pm 3m$. Downhole surveys were completed on all drill holes using a gyro downhole survey tool at downhole intervals of approximately every 30m. The grid system used for location of all drill holes as shown in tables and on figures is MGA Zone 51, GDA94. Topographic control is based on published topographic maps.
Data spacing and distribution	<ul style="list-style-type: none"> <i>Data spacing for reporting of Exploration Results.</i> <i>Whether the data spacing and distribution is sufficient to establish the degree of geological and grade continuity appropriate for the Mineral Resource and Ore Reserve estimation procedure(s) and classifications applied.</i> <i>Whether sample compositing has been applied.</i> 	<ul style="list-style-type: none"> Mt Monger: <ul style="list-style-type: none"> Drill hole spacing is variable, as shown in diagrams in the body of the announcement. Drill hole spacing and distribution is not considered sufficient as to make geological and grade continuity assumptions appropriate for Mineral Resource estimation. 3 metre sample compositing of the RC percussion drilling samples was routinely used.
Orientation of data in relation to geological structure	<ul style="list-style-type: none"> <i>Whether the orientation of sampling achieves unbiased sampling of possible structures and the extent to which this is known, considering the deposit type.</i> <i>If the relationship between the drilling orientation and the orientation of key mineralised structures is considered to have introduced a sampling bias, this should be assessed and reported if material.</i> 	<ul style="list-style-type: none"> Mt Monger: <ul style="list-style-type: none"> The orientation of drilling and sampling is not anticipated to have any significant biasing effects. The drill holes reported in this announcement are generally angled to the west and are interpreted to have intersected the mineralised structures approximately perpendicular to their dip.
Sample security	<ul style="list-style-type: none"> <i>The measures taken to ensure sample security.</i> 	<ul style="list-style-type: none"> Mt Monger: <ul style="list-style-type: none"> Sample chain of custody was managed by MTM. Sampling was carried out by MTM field staff. Samples were transported to a laboratory in Kalgoorlie by MTM employees.
Audits or reviews	<ul style="list-style-type: none"> <i>The results of any audits or reviews of sampling techniques and data.</i> 	<p>No external audits or reviews were undertaken on sampling techniques and data. Drill data was reviewed internally by the Exploration Manager, Senior</p>

Criteria	JORC Code explanation	Commentary
		Exploration Geologist and Senior Geological Consultant.

Section 2 - Reporting of Exploration Results

(Criteria listed in the preceding section also apply to this section.)

Criteria	JORC Code explanation	Commentary
<i>Mineral tenement and land tenure status</i>	<ul style="list-style-type: none"> • <i>Type, reference name/number, location and ownership including agreements or material issues with third parties such as joint ventures, partnerships, overriding royalties, native title interests, historical sites, wilderness or national park and environmental settings.</i> • <i>The security of tenure held at the time of reporting along with any known impediments to obtaining a licence to operate in the area.</i> 	<ul style="list-style-type: none"> • Mt Monger: <ul style="list-style-type: none"> • The results relate to drilling completed on exploration licences E25/531, E25/532, E25/536 and prospecting licence P25/2490. • The tenements are held 100% by Mt Monger Resources Ltd, pursuant to purchase agreements that have been completed with vendors of these tenements. • The tenements mainly overlay the Mt Monger pastoral lease (LPL N050166). • The tenements are held securely and no impediments to obtaining a licence to operate have been identified.
<i>Exploration done by other parties</i>	<ul style="list-style-type: none"> • <i>Acknowledgment and appraisal of exploration by other parties.</i> 	<ul style="list-style-type: none"> • Mt Monger: <ul style="list-style-type: none"> • Gold mining in the Mt Monger area commenced in the late 1890s and continues to the present day. Exploration campaigns with the Mt Monger Gold Project area have generally focused on either the western portion of the Project (dominated by the Bulong Anticline) or the eastern portion of the Project (Mount Belches Formation). • The main gold prospects of Duchess of York and Hickman's Find were originally drilled by WMC in the 1980's, with follow-up drilling completed by Hampton Hill Mining in the early 1990's. Additional exploration work was carried out over portions of the project area in the later 1990's by Titan Resources, Hampton Hill and Placer Dome in the early 2000's, after which the mineral titles covering the area were broken up into numerous individual holdings. • Following a consolidation of a number of the projects areas by Rubicon Resources in the mid 2000's, there was additional work carried under JV with both Integra Mining and Silver Lake Resources. • Geological mapping; geochemical sampling; regional geophysical surveys (magnetics and radiometrics); auger, RAB, aircore and RC percussion drilling has been completed over the project area and a number of gold occurrences identified. • Drilling is typically shallow and few prospect areas are considered to have been effectively tested.
<i>Geology</i>	<ul style="list-style-type: none"> • <i>Deposit type, geological setting and style of mineralisation.</i> 	<ul style="list-style-type: none"> • Mt Monger: <ul style="list-style-type: none"> ○ The Mt Monger Project is prospective for orogenic gold mineralisation associated with structures in Archaean greenstone units. ○ The Mt Monger Gold Project straddles the boundary between the upright, regional, folded mafic-ultramafic rocks of the Bulong Anticline (also known as the Yindarlgooda Dome) to the west and the Mount Belches Formation, a sequence of sedimentary rocks including highly magnetic banded iron formations (BIF) to the east. The Mount Belches Formation and the Bulong Anticline are separated by the major north-south trending Randall Shear Zone which is locally referred to as the Bare Hill Shear Zone.

Criteria	JORC Code explanation	Commentary
		<ul style="list-style-type: none"> ○ The Bulong Anticline plunges to the south-southwest in the project area and comprises a felsic to intermediate volcanic sequence in the core of the anticline, overlain by a mafic volcanic sequence that becomes thinner and changes in composition (high-Mg to tholeiitic) from south to north. The area is characterised by a northwest-trending structures with several prominent regional fault systems. ○ The banded iron-formation layers within the Mount Belches sequence outline a regional-scale fold pattern that intensifies from open northwest-trending fold to isoclinal, attenuated north-trending folds towards the Randall Shear. ○ Primary gold mineralisation in the Bulong Anticline is structurally controlled and located at sites of rheological and chemical variability. Gold mineralisation is described as occurring in quartz veins with variable pyrite abundance. ○ Gold deposits in the area are situated on narrow shear zones that are oriented parallel to the southeast striking axial plane of the fold or on tensional splays trending north-northwest off the sheared contact between felsic and ultramafic rocks or on the contact between felsic intrusives and country rocks. Cross-cutting structures which appear to enhance mineralisation direction. ○ Economic mineralisation in the Mount Belches Beds is primarily restricted to the BIF units. Gold is hosted by magnetite-grunerite rich BIF, often proximal to shallowly south westerly-dipping quartz veins, where sulphur bearing hydrothermal fluids are interpreted to de-sulphidate in the brittle, more permeable BIF units. ○ The Comet Study provided mineralogy to indicate alteration zones on a regional scale
<p><i>Drill hole Information</i></p>	<ul style="list-style-type: none"> ● <i>A summary of all information material to the understanding of the exploration results including a tabulation of the following information for all Material drill holes:</i> <ul style="list-style-type: none"> ● <i>easting and northing of the drill hole collar</i> ● <i>elevation or RL (Reduced Level – elevation above sea level in metres) of the drill hole collar</i> ● <i>dip and azimuth of the hole</i> ● <i>down hole length and interception depth</i> ● <i>hole length.</i> ● <i>If the exclusion of this information is justified on the basis that the information is not Material and this exclusion does not detract from the understanding of the report, the Competent Person should clearly explain why this is the case.</i> 	<p>All material information is summarised in the Tables and Figures included in the body of the announcement.</p>

Criteria	JORC Code explanation	Commentary
Data aggregation methods	<ul style="list-style-type: none"> <i>In reporting Exploration Results, weighting averaging techniques, maximum and/or minimum grade truncations (e.g. cutting of high grades) and cut-off grades are usually Material and should be stated.</i> <i>Where aggregate intercepts incorporate short lengths of high-grade results and longer lengths of low-grade results, the procedure used for such aggregation should be stated and some typical examples of such aggregations should be shown in detail.</i> <i>The assumptions used for any reporting of metal equivalent values should be clearly stated.</i> 	<ul style="list-style-type: none"> Mt Monger <ul style="list-style-type: none"> Length-weighted average grades are reported. No maximum grade truncations have been applied. Significant intersections are reported based on a 0.1g/t Au cut-off grade, with allowance for internal dilution by a maximum of one sub-grade sample. Where appropriate higher-grade intersections are reported based on a 0.2g/t Au cut-off with no internal dilution. Refer to Appendix II for detail. No metal equivalent values have been reported.
Relationship between mineralisation widths and intercept lengths	<ul style="list-style-type: none"> <i>These relationships are particularly important in the reporting of Exploration Results.</i> <i>If the geometry of the mineralisation with respect to the drill hole angle is known, its nature should be reported.</i> <i>If it is not known and only the down hole lengths are reported, there should be a clear statement to this effect (e.g. 'down hole length, true width not known').</i> 	<ul style="list-style-type: none"> Down hole lengths are reported, true width is not known. The relationship between mineralisation width and intercept length is not known. Further drilling is required to determine the geometry of the mineralisation with respect to the drill hole angle.
Diagrams	<ul style="list-style-type: none"> <i>Appropriate maps and sections (with scales) and tabulations of intercepts should be included for any significant discovery being reported These should include, but not be limited to a plan view of drill hole collar locations and appropriate sectional views.</i> 	<ul style="list-style-type: none"> All appropriate diagrams are in the body of this report.
Balanced reporting	<ul style="list-style-type: none"> <i>Where comprehensive reporting of all Exploration Results is not practicable, representative reporting of both low and high grades and/or widths should be practiced to avoid misleading reporting of Exploration Results.</i> 	<ul style="list-style-type: none"> Comprehensive reporting of assay results is not practicable. Representative reporting of significant intersections is included in the body of the announcement.
Other substantive exploration data	<ul style="list-style-type: none"> <i>Other exploration data, if meaningful and material, should be reported including (but not limited to): geological observations; geophysical survey results; geochemical survey results; bulk samples – size and method of treatment; metallurgical test results; bulk density, groundwater, geotechnical and rock characteristics; potential deleterious or contaminating substances.</i> 	<ul style="list-style-type: none"> There is no other exploration data that is considered to be material to the results reported herein.
Further work	<ul style="list-style-type: none"> <i>The nature and scale of planned further work (e.g. tests for lateral extensions or depth extensions or large-scale step-out drilling).</i> <i>Diagrams clearly highlighting the areas of possible extensions, including the main geological interpretations and future drilling areas, provided this information is not commercially sensitive.</i> 	<ul style="list-style-type: none"> 'Further Work' is presented in the 'Next Steps' section of the ASX Release Body.