

Telfer South Data Reveals Significantly Larger Gold-Copper Prospect

Gold-Copper trend now extends to over 1km strike - 10km SW of Telfer Gold Mine

- **A detailed review of Newcrest Mining Limited's 1991 historic rock-chip samples¹ from the Rincon's 100% owned Telfer South Hasties prospect reveals:**
 - **Newly identified zone of outcrop ~10km SW of Telfer with gold grades up to 37g/t Au and copper values up to 21% Cu**
 - **An extensive high-grade gold-copper zone (Hasties Central) extending for more than 300 m along strike and up to 100 m in width, immediately north-west of Hasties SE deposit**
 - **Results suggest mineral continuity between the Hasties Main and Hasties SE gold/copper deposits (see Figures 2 and 3).**
 - **Hasties "Trend" connecting Hasties Main and Hasties SE deposits now expanded to over 1,000 m and is open along strike**
- **Over 75% of the above samples come from Hasties Central and the rest are located at the southern end of Hasties Main, outside the current MRE².**
- **The assay results (Table 1) have been cross-checked and confirmed using certified laboratory data within the Newcrest Mining Limited ("Newcrest") historic data set.**
- **Review and collation of further Newcrest historic data is underway.**
- **Rincon remains focussed on mobilising a drill rig back to site later this quarter, to broaden the gold mineralisation at the Hasties Main and Hasties SE deposits and initiating planning on Hasties Central.**
- **Exploration at Hasties is a top priority for Rincon and builds upon the multi-stage, multi-year exploration Farm-In and Joint Venture agreement with Greatland Resources (ASX:GGP, AIM:GGP) covering 200.8 km² of Rincon-owned exploration tenements, as announced on 18 December 2026.³**
- **Significant historic rock-chip sample assay results exceeding +5 g/t Au and +5.0 % Cu have been recorded across Hasties Main, Hasties SE, and Hasties Central as follows:**

¹ Department of Local Government, Industry Regulation and Safety (LGIRS) – Report a35062_E45-985_1991-Newcrest Mining Ltd

² Refer to Rincon Resources Limited's announcement Maiden Gold Resource Update – Telfer South dated 10 February 2025

³ Refer to Rincon Resources Limited's Farm-In & Joint Venture with Greatland Resources on Telfer South Tenements dated 18th December 2025

Year	Company	Sample No	Type	Cu %	Au1 g/t
1991	Newcrest Mining Limited	A3435	RockChip	17.2	2.50
1991	Newcrest Mining Limited	A3436	RockChip	0.96	37.10
1991	Newcrest Mining Limited	A4570	RockChip	13.2	2.86
1991	Newcrest Mining Limited	A4571	RockChip	13.6	3.32
1991	Newcrest Mining Limited	A4572	RockChip	9.6	3.36
1991	Newcrest Mining Limited	A4576	RockChip	0.26	6.00
1991	Newcrest Mining Limited	A4578	RockChip	3.6	14.00
1991	Newcrest Mining Limited	A4583	RockChip	2.02	16.00
1991	Newcrest Mining Limited	A4584	RockChip	1.6	5.76
1991	Newcrest Mining Limited	A4585	RockChip	9.2	0.60
1991	Newcrest Mining Limited	A4586	RockChip	0.056	15.20
1991	Newcrest Mining Limited	A4587	RockChip	7.2	3.06
1991	Newcrest Mining Limited	A4588	RockChip	0.088	18.80
1991	Newcrest Mining Limited	A4596	RockChip	0.078	9.80
1991	Newcrest Mining Limited	A4600	RockChip	0.52	30.00
1991	Newcrest Mining Limited	A6714	RockChip	0.0035	7.60
1991	Newcrest Mining Limited	A6725	RockChip	0.415	5.80
1991	Newcrest Mining Limited	A6728	RockChip	9.4	0.54
1991	Newcrest Mining Limited	A6730	RockChip	7.89	0.27
1991	Newcrest Mining Limited	A6749	RockChip	19.4	0.01
1991	Newcrest Mining Limited	A6750	RockChip	21.1	0.01
1991	Newcrest Mining Limited	A6751	RockChip	18.9	0.01
1991	Newcrest Mining Limited	A6754	RockChip	0.14	5.19

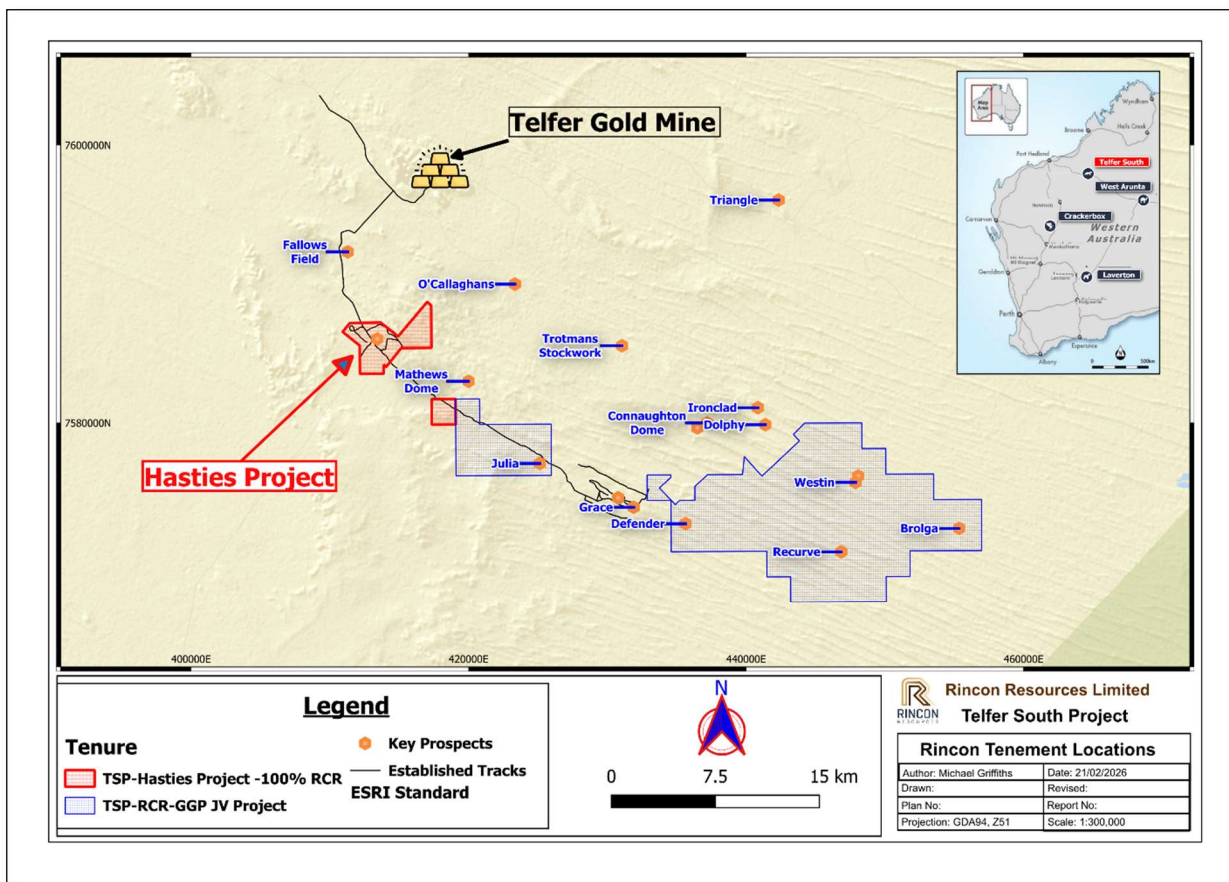


Figure 1 – Telfer South Project Location

Rincon Technical Director, Michael Griffiths commented:

"In preparation for our 2026 drilling program, we conducted a comprehensive review of historic exploration activity on the Telfer South Project, which includes the Hasties area. This region has had several waves of exploration including extensive work by Newcrest and before that by Newmont Mining. Much of that work dates back to the late 1980s, and apart from the drilling records, most of the data obtained remains undigitized.

During our review, we discovered that rock-chip samples collected by Newcrest (1991) clearly delineated both the Hasties Main and Hasties SE deposits. Moreover, the samples revealed an intervening zone between the two deposits that exhibits exceptionally high gold and copper grades.

This is a truly remarkable discovery. Whilst a substantial amount of additional data still needs verification and consolidation, the information we have now, is being integrated into our database and will greatly enhance our understanding of the area and open new opportunities at Hasties as we embark on a major drilling campaign at Telfer South for 2026 and we move to significantly increase our MRE in multiple phases throughout the year".

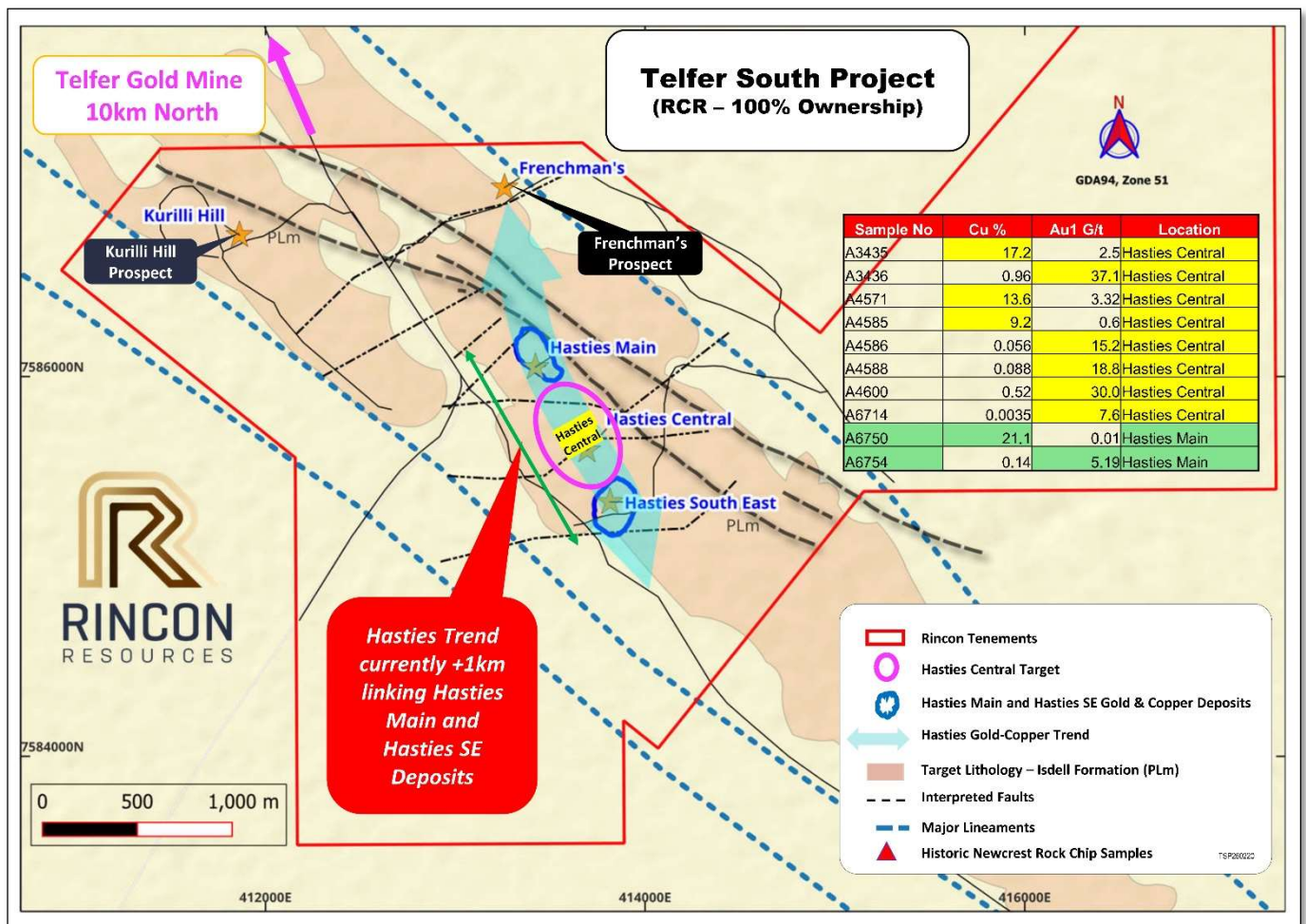


Figure 2 –Telfer South Project Hasties prospect Locations

Rincon Resources Limited (ASX: RCR) (“**Rincon**” or “**Company**”) is pleased to report that it has started gathering and validating historic data from work completed by Newcrest Mining Limited (“Newcrest”) during the early 1990’s covering the Hasties Main and Hasties South-East gold-copper deposits, which lie approximately 10 km south of the Telfer Gold-Copper Mine in Western Australia’s Eastern Pilbara region (see Figure 1).

After a preliminary review, the company concluded that the available data is of high quality and engaged Apex Geoscience (“Apex”) to verify and collate this work. To date, Apex has focused on historic rock-chip samples that have undergone extensive elemental analysis by Australia Laboratory Services (Figure 3). Sample locations were digitised from legacy maps and then cross-referenced after careful georeferencing in GIS software. Detailed geological mapping of the area added additional control points, improving positional accuracy. Sample locations are shown on Figure 3 and tables as Table 1 below.

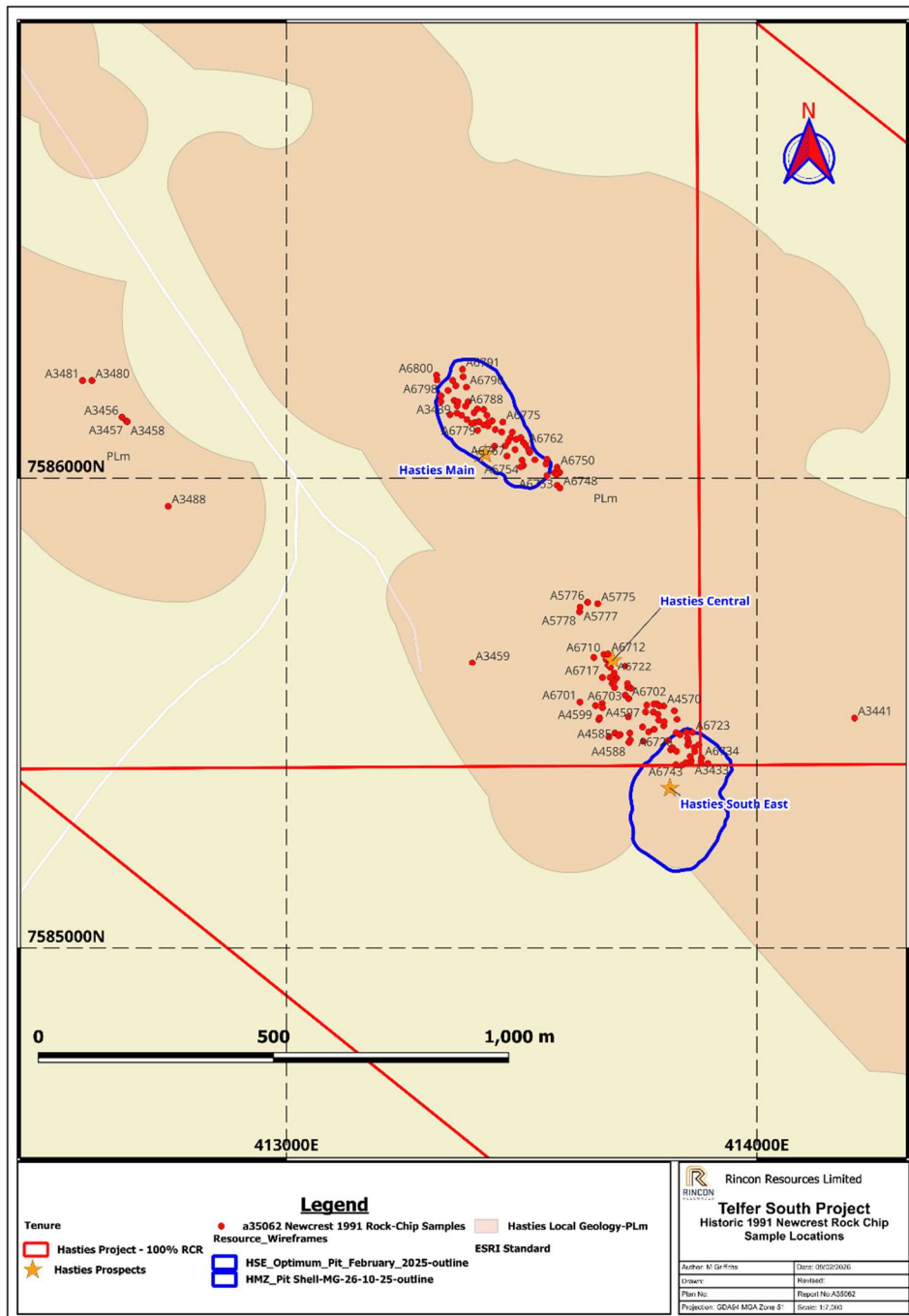


Figure 3 –Telfer South Project Hasties Sample Locations

The historic assay results are shown in Tables 2.

The historic rock-chip samples are primarily located northwest of the Hasties SE and this area “Hasties Central”, will be the focus of activity once all permits are approved. The data indicates that mineralisation extends from the Hasties SE deposit for ~300 m with a maximum width of ~100m. Two samples returned exceptionally high grades of +30 g/t Au, with several others exceeding 5 g/t Au, and copper values reaching up to 21% Cu.

Newcrest’s systematic approach to exploration provides a strong foundation, and Rincon intends to leverage this high-quality dataset to advance the Hasties prospects. The company will also review and compile historic soil samples and petrological studies. All this legacy data is currently non-digital and requires verification.

In parallel, Rincon remains committed to upgrading its February 2025 Mineral Resource Estimate (MRE), which presently stands at 870,000 t at 0.96 g/t Au and 0.26 % Cu (approximately 26,800 oz Au and 2,286 t Cu)⁴. Using drilling completed in Q4 2025, the updated resource will extend near-surface mineralisation by roughly 150 m along strike toward Hasties Central and down-dip into the transition zone, confirming that mineralisation remains open at depth.

Authorised by the Board of Rincon Resources Limited.

For more information visit www.rinconresources.com.au or contact:

Company:

Office: Tel: +61 (8) 6555 2950

Michael Griffiths - Director

Email: mike.griffiths@rinconresources.com.au

David Lenigas - Chairman

Email: davidlenigas@gmail.com

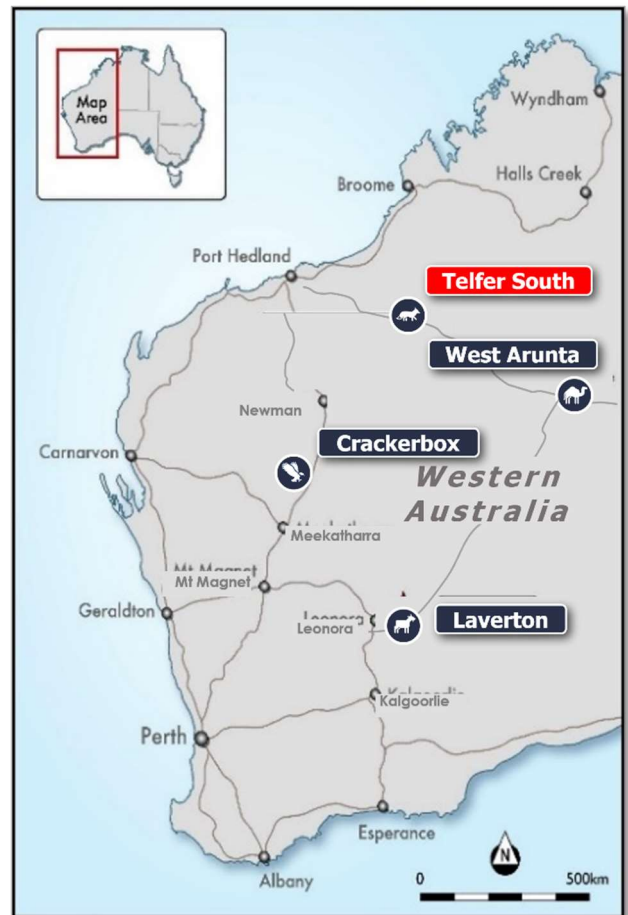
⁴ Refer to Rincon Resources Limited’s announcement Maiden Gold Resource Update – Telfer South dated 10 February 2025

About Rincon:

Rincon has 100% interest in four exploration assets in Western Australia that are highly prospective for copper and gold. These are the South Telfer Project, Crackerbox Gold Project (Murchison Gold Field), West Arunta Project and the Laverton Project.

Following the recent farm-in and joint-venture⁵ with Greatland Resources (ASX:GGP), Rincon's Telfer South–Hasties Project now consists of two exploration licences and two prospecting licences. Together they cover roughly 15 km² with several parallel structures across geology known to host significant gold and copper mineralisation.

Each asset has previously been subject to historical exploration which has identified prospective mineral systems that warrant further exploration. The Company's aim is to create value for its shareholders by advancing its assets through the application of technically sound, methodical, and systematic exploration programs to test, discover, and delineate economic resources for mining.



Competent Person Statements

Mr Michael Griffiths

The information in this report that relates to Exploration Results is based on information compiled by Mr Michael Griffiths a Competent Person who is a Fellow of the Australasian Institute of Mining and Metallurgy. Mr. Griffiths is a Director of the Company. Mr. Griffiths has sufficient experience that is relevant to the style of mineralisation and type of deposit under consideration and to the activity being undertaken to qualify as a Competent Person as defined in the 2012 Edition of the "Australasian Code for Reporting of Exploration Results, Mineral Resources and Ore Reserves". Mr. Griffiths consents to the inclusion in this report of the matters based on his information in the form and context in which it appears.

The Company confirms that it is not aware of any new information or data that materially affects the information included in the original market announcements in relation to the Exploration Results. The Company confirms that the form and context in which the competent persons findings are presented have not been materially modified from the original announcements.

With respect to estimates of Mineral Resources, announced on 25 February 2025 (MRE Announcement), the Company confirms that the Exploration Results in this announcement is expected to form part of a revision to the current MRE, however all relevant information and data required to revise the MRE is not yet available. Other than the potential impact of the above, the Company confirms that it is not aware of any new information or data in a form able assess that materially effects the information in the MRE Announcement and that all material assumptions and technical parameters underpinning the estimates continue to apply and have not materially changed.

⁵ Refer to Rincon Resources Limited's - Farm-In & Joint Venture with Greatland Resources on Telfer South Tenements dated 18th December 2025

Forward-Looking Statements

This announcement may contain certain forward-looking statements and opinions. Forward-looking statements, including projections, forecasts and estimates, are provided as a general guide only and should not be relied on as an indication or guarantee of future performance and involve known and unknown risks, uncertainties, assumptions, contingencies and other important factors, many of which are outside the control of the Company and which are subject to change without notice and could cause the actual results, performance or achievements of the Company to be materially different from the future results, performance or achievements expressed or implied by such statements. Past performance is not necessarily a guide to future performance, and no representation or warranty is made as to the likelihood of achievement or reasonableness of any forward-looking statements or other forecast. Nothing contained in this announcement, nor any information made available to you is, or and shall be relied upon as, a promise, representation, warranty or guarantee as to the past, present or the future performance of Rincon.

Annexure A – Mineral Resource Estimate

Table 1: Hasties Gold-Copper Mineral Resource 0.3 g/t Au Cutoff

Hasties Main Zone and Hasties Southeast					
AuCut >=0.3					
Class	Tonnes	Au (g/t)	Cu (%)	Au (oz)	Cu (t)
Indicated	633,000	1.03	0.28	21,100	1,733
Inferred	237,000	0.75	0.23	5,700	553
Total	870,000	0.96	0.26	26,800	2,286

Table 2 Hasties Gold-Copper Resource 0.5 g/t Au Cutoff

Hasties Main Zone and Hasties Southeast					
AuCut >=0.5					
Class	Tonnes	Au (g/t)	Cu (%)	Au (oz)	Cu (t)
Indicated	567,000	1.11	0.28	20,100	1,557
Inferred	187,000	0.84	0.24	5,000	459
Total	754,000	1.04	0.27	25,200	2,016

Table 3 Hasties Gold-Copper Resource 1.0 g/t Au Cutoff

Hasties Main Zone and Hasties Southeast					
AuCut >=1.0					
Class	Tonnes	Au (g/t)	Cu (%)	Au (oz)	Cu (t)
Indicated	195,000	1.92	0.27	12,000	515
Inferred	40,000	1.59	0.35	2,000	139
Total	235,000	1.86	0.28	14,100	654

Table 2 –Historic (1991) Newcrest Rock Chip Sample Locations & Assays⁶

Sample No.	EAST (MGA94_51)	NORTH (MGA94_51)	RL (m)	Cu ppm	Pb ppm	Zn ppm	As ppm	Co ppm	Bi ppm	Au1 ppb	Au1 ppm	Au2 ppm
A3433	413861	7585397	362	1950	15	5				1450	1.45	1.4
A3434	413817	7585421	359	210	2.5	5				200	0.2	
A3435	413802	7585472	367	172000	2.5	240				2500	2.5	2.8
A3436	413803	7585480	367	9600	2.5	30				3710 0	37.1	35.5
A3437	413727	7585490	364	360	2.5	5				80	0.08	
A3438	413442	7586068	363	888	2.5	2				480	0.48	
A3439	413357	7586165	359	300	2.5	2				870	0.87	0.9
A3440	413328	7586163	356	35	2.5	2				70	0.07	0.07
A3441	414208	7585488	365	1	25	5	20	2.5	2.5	20	0.02	
A3456	412650	7586129	348	15	2.5	20	1900	2.5	10	50	0.05	
A3457	412660	7586121	348	40	2.5	65	4700	50	35	570	0.57	0.51
A3458	412661	7586120	348	20	2.5	10	360	2.5	2.5	5	0.005	
A3459	413395	7585606	354	580	5	50	3200	25	10	240	0.24	
A3467	411061	7587144	354	260	2.5	10	730	2.5	2.5	5	0.005	
A3468	411058	7587141	354	3250	540	25	2300	10	2850	700	0.7	
A3469	411056	7587139	354	7900	2.5	20	2900	25	5	560	0.56	
A3470	411085	7587217	354	590	2.5	140	570	65	2.5	20	0.02	
A3471	411104	7587195	354	290	2.5	80	560	70	2.5	5	0.005	
A3472	411178	7587151	354	30	2.5	5	50	2.5	2.5	10	0.01	
A3473	411222	7587074	354	360	2.5	140	480	55	2.5	5	0.005	0.005
A3474	411363	7587191	354	770	2.5	20	3100	40	5	330	0.33	
A3475	411277	7586978	334	2800	2.5	20	110	5	2.5	3060	3.06	3.14
A3476	411309	7586872	333	40	2.5	20	130	15	2.5	30	0.03	
A3480	412586	7586207	347	400	2.5	5	6500	105	10	160	0.16	0.18
A3481	412566	7586207	350	20	2.5	10	430	20	2.5	5	0.005	
A3482	412464	7586295	350	590	2.5	25	13800	130	5	220	0.22	
A3483	412441	7586314	349	200	2.5	10	490	80	10	230	0.23	
A3484	412410	7586339	346	30	2.5	10	900	85	2.5	130	0.13	
A3485	412381	7586364	344	5	2.5	5	220	15	2.5	120	0.12	
A3486	412219	7586526	350	20	2.5	10	90	5	2.5	5	0.005	
A3487	411799	7586656	339	10	2.5	5	140	15	2.5	5	0.005	
A3488	412749	7585940	344	170	2.5	5	11500	5	10	320	0.32	0.35
A3499	413830	7585485	367	3600	2.5	60	6200	25	2.5	70	0.07	0.05
A3500	413825	7585503	370	9000	2.5	90	2800	35	2.5	540	0.54	
A4570	413802	7585513	366	132000	2.5	65	1350	80	2.5	2860	2.86	
A4571	413788	7585518	364	136000	2.5	60	1600	130	2.5	3320	3.32	
A4572	413793	7585514	365	96000	2.5	40	1350	55	2.5	3360	3.36	3.6
A4573	413781	7585517	363	4400	2.5	35	4400	35	10	4800	4.8	

⁶ Department of Local Government, Industry Regulation and Safety (LGIRS) – Report a35062_E45-985_1991-Newcrest Mining Limited

A4574	413766	7585515	362	480	10	15	180	45	2.5	340	0.34	
A4575	413780	7585500	365	1550	2.5	15	3600	40	10	2450	2.45	
A4576	413790	7585495	367	2600	2.5	30	5100	20	2.5	6000	6	5.84
A4577	413792	7585483	368	5400	2.5	20	3700	10	2.5	2120	2.12	
A4578	413782	7585464	368	36000	2.5	5	1150	55	280	14000	14	13.8
A4579	413757	7585469	363	890	2.5	2	70	10	2.5	110	0.11	
A4580	413770	7585459	367	18400	5	5	210	10	2.5	440	0.44	
A4581	413759	7585438	364	115	5	2	130	25	2.5	90	0.09	
A4582	413731	7585441	360	1150	5	35	480	70	2.5	190	0.19	
A4583	413730	7585456	361	20200	2.5	5	2600	105	2.5	16000	16	16.7
A4584	413709	7585453	367	16000	2.5	15	2450	20	2.5	5760	5.76	
A4585	413698	7585456	370	92000	2.5	5	1250	15	2.5	600	0.6	
A4586	413686	7585448	367	560	2.5	10	5800	50	10	15200	15.2	17.3
A4587	413706	7585451	368	72000	2.5	5	3500	25	2.5	3060	3.06	
A4588	413728	7585436	360	880	2.5	20	2450	100	25	18800	18.8	18.3
A4595	413664	7585485	370	3100	2.5	20	4500	90	25	2400	2.4	
A4596	413666	7585488	370	780	2.5	5	3300	5	15	9800	9.8	10.3
A4597	413671	7585519	368	35	2.5	5	2550	30	30	1150	1.15	
A4598	413672	7585510	369	25	2.5	10	3000	35	45	470	0.47	
A4599	413657	7585514	369	15	10	10	150	40	2.5	40	0.04	
A4600	413764	7585501	362	5200	2.5	15	5200	95	10	30000	30	25.8
A5771	413363	7586153	358	145	2.5	5	220	5	50	160	0.16	0.13
A5772	413348	7586135	355	145	2.5	2	10	2.5	350	1090	1.09	
A5773	413320	7586208	357	600	2.5	10	30	20	25	150	0.15	
A5774	413365	7586162	359	290	2.5	5	70	5	550	720	0.72	
A5775	413662	7585733	367	1800	2.5	15	4400	2.5	2350	2380	2.38	2.23
A5776	413640	7585736	366	2200	2.5	100	110	2.5	500	1830	1.83	
A5777	413624	7585725	366	550	2.5	10	120	10	100	40	0.04	
A5778	413623	7585716	368	35	2.5	2	1200	10	2.5	50	0.05	
A6701	413624	7585522	367	20	2.5	350	1700	75	2.5	5	0.005	
A6702	413728	7585529	368	680	2.5	5	50	20	2.5	310	0.31	0.29
A6703	413720	7585536	370	10800	2.5	5	600	30	2.5	3450	3.45	3.2
A6704	413733	7585551	366	40	5	5	30	10	2.5	5	0.005	
A6705	413726	7585553	367	30	2.5	5	70	15	2.5	5	0.005	
A6706	413725	7585561	367	15	2.5	15	10	10	2.5	5	0.005	
A6707	413702	7585573	366	20	2.5	10	70	30	2.5	5	0.005	0.005
A6708	413720	7585599	373	12100	5	20	150	20	2.5	1500	1.5	1.5
A6709	413654	7585619	361	20	5	15	20	15	2.5	40	0.04	
A6710	413675	7585625	364	540	2.5	10	60	20	2.5	730	0.73	0.71
A6711	413680	7585614	365	10	5	10	70	35	2.5	50	0.05	
A6712	413684	7585626	365	30	2.5	5	140	40	2.5	5	0.005	
A6713	413687	7585609	367	20	2.5	5	50	20	2.5	40	0.04	
A6714	413694	7585612	367	35	5	25	80	20	2.5	7600	7.6	6.1

A6715	413683	7585601	366	550	5	5	1300	25	135	360	0.36	
A6716	413689	7585595	366	20	2.5	5	140	45	2.5	5	0.005	
A6717	413672	7585574	361	10	2.5	5	20	5	2.5	180	0.18	0.24
A6718	413693	7585561	365	25	2.5	5	120	15	2.5	5	0.005	
A6719	413698	7585553	368	200	2.5	5	70	20	2.5	90	0.09	
A6720	413697	7585566	365	36000	2.5	5	110	10	2.5	3500	3.5	3.64
A6721	413688	7585574	364	115	2.5	5	20	10	2.5	160	0.16	
A6722	413697	7585583	367	20400	20	5	80	15	2.5	1000	1	1.17
A6723	413863	7585457	366	4900	2.5	15	5800	2.5	10	520	0.52	
A6724	413850	7585458	365	4350	2.5	70	3140	25	20	1450	1.45	
A6725	413837	7585453	361	4150	2.5	45	6000	20	20	5800	5.8	6
A6726	413829	7585457	361	6700	2.5	30	9700	10	20	1070	1.07	1.06
A6727	413868	7585417	364	27800	2.5	10	4100	15	5	2100	2.1	
A6728	413853	7585430	364	94000	2.5	10	1170	5	80	540	0.54	
A6729	413867	7585425	365	33500	2.5	20	2740	50	2.5	4040	4.04	3.65
A6730	413855	7585436	365	78000	2.5	50	1630	35	2.5	270	0.27	
A6731	413853	7585445	365	30200	2.5	30	2560	35	10	1000	1	
A6732	413877	7585431	365	16000	2.5	40	2300	5	95	2050	2.05	1.91
A6733	413882	7585395	360	2000	2.5	5	2610	15	25	720	0.72	0.57
A6734	413883	7585403	361	5200	2.5	15	4600	20	20	550	0.55	
A6735	413896	7585391	358	980	2.5	5	2060	10	35	360	0.36	
A6736	413859	7585407	363	860	2.5	5	4100	5	35	300	0.3	0.45
A6738	413812	7585440	362	48500	2.5	20	1770	25	35	540	0.54	
A6739	413821	7585425	359	1400	2.5	10	3130	20	20	190	0.19	
A6740	413829	7585417	359	2300	2.5	15	8700	5	3600	980	0.98	
A6741	413828	7585389	358	490	2.5	5	115000	2.5	490	1680	1.68	1.9
A6742	413842	7585388	359	950	2.5	50	11800	25	80	270	0.27	
A6743	413850	7585394	361	780	2.5	10	720	5	5	150	0.15	
A6744	413554	7586040	356	620	2.5	10	1980	20	5	220	0.22	
A6745	413552	7586030	356	260	2.5	5	1280	2.5	15	350	0.35	
A6746	413554	7586005	356	1560	2.5	5	8300	2.5	50	1210	1.21	
A6747	413575	7585985	357	1300	2.5	15	6500	2.5	220	1830	1.83	
A6748	413581	7585979	357	740	2.5	5	7000	2.5	55	1840	1.84	1.9
A6749	413581	7586012	361	194000	2.5	145	340	110	2.5	5	0.005	
A6750	413576	7586023	361	211000	2.5	40	170	30	2.5	5	0.005	
A6751	413576	7586016	360	189000	2.5	60	150	10	2.5	5	0.005	
A6752	413569	7586011	359	12800	5	5	900	2.5	2.5	290	0.29	
A6753	413574	7586007	360	19700	2.5	5	890	2.5	25	390	0.39	
A6754	413501	7586038	358	1400	2.5	15	15400	5	890	5180	5.18	5.3
A6755	413504	7586027	356	1150	2.5	5	6400	20	50	480	0.48	
A6756	413498	7586024	356	180	2.5	5	5200	15	30	880	0.88	
A6757	413469	7586047	360	320	2.5	5	6600	5	280	1110	1.11	
A6758	413486	7586061	363	1150	2.5	5	10300	5	50	320	0.32	0.35
A6759	413517	7586055	360	350	2.5	2.5	2620	2.5	30	120	0.12	
A6760	413528	7586039	355	530	2.5	5	4800	15	15	70	0.07	

A6761	413515	7586061	361	230	2.5	1	2010	2.5	25	270	0.27	
A6762	413509	7586070	363	440	2.5	1	7000	2.5	50	160	0.16	
A6763	413504	7586076	364	1000	2.5	5	3700	5	2.5	30	0.03	
A6764	413488	7586082	369	580	2.5	5	12000	2.5	90	1020	1.02	
A6765	413498	7586086	367	460	2.5	10	11700	25	125	1050	1.05	
A6766	413476	7586086	369	1400	2.5	1	6300	2.5	155	4880	4.88	5
A6767	413471	7586077	368	340	2.5	1	12000	2.5	25	780	0.78	
A6768	413465	7586068	366	300	2.5	1	3360	2.5	10	530	0.53	
A6769	413406	7586102	360	125	10	5	390	15	2.5	70	0.07	0.07
A6770	413419	7586113	360	700	2.5	5	10200	2.5	1600	600	0.6	
A6771	413429	7586111	362	2770	2.5	15	15600	2.5	800	1200	1.2	1.2
A6772	413444	7586103	366	740	2.5	15	6000	2.5	2.5	320	0.32	
A6773	413458	7586098	369	710	2.5	35	7100	10	70	600	0.6	
A6774	413480	7586098	371	340	5	25	4200	50	2.5	660	0.66	
A6775	413460	7586119	371	410	2.5	35	2310	25	2.5	80	0.08	
A6776	413437	7586122	365	610	2.5	5	2110	2.5	2.5	1920	1.92	1.92
A6777	413426	7586133	365	1150	5	5	5200	5	65	520	0.52	
A6778	413430	7586119	364	620	2.5	40	5500	10	300	480	0.48	
A6779	413409	7586120	358	1050	2.5	15	8000	2.5	400	2260	2.26	2.16
A6780	413400	7586118	357	330	2.5	5	4300	2.5	650	1160	1.16	
A6781	413399	7586139	359	240	2.5	5	2430	2.5	200	1140	1.14	
A6782	413419	7586146	366	840	2.5	30	3250	20	50	1260	1.26	
A6783	413406	7586147	361	740	2.5	30	3450	10	2.5	560	0.56	
A6784	413384	7586124	356	210	2.5	5	5900	10	2.5	400	0.4	
A6785	413393	7586117	357	430	2.5	10	15200	2.5	100	1200	1.2	
A6786	413372	7586134	355	2360	2.5	5	16900	5	100	1330	1.33	
A6787	413362	7586138	355	1120	2.5	5	9700	5	125	770	0.77	
A6788	413381	7586153	358	760	2.5	10	7600	5	800	1700	1.7	1.4
A6789	413386	7586162	359	600	2.5	10	6500	5	35	610	0.61	
A6790	413383	7586193	359	190	2.5	5	2620	10	25	150	0.15	
A6791	413374	7586231	361	1500	2.5	5	3000	25	2.5	3000	3	3.05
A6792	413376	7586216	360	730	2.5	5	8500	10	20	560	0.56	
A6793	413353	7586207	357	400	2.5	35	6100	10	2.5	600	0.6	
A6794	413360	7586196	357	310	2.5	35	8000	10	25	1250	1.25	
A6795	413343	7586186	357	230	2.5	10	3500	5	15	200	0.2	
A6798	413328	7586175	356	590	2.5	20	9700	10	85	880	0.88	0.85
A6800	413319	7586219	359	85	2.5	10	1080	5	550	940	0.94	1

Historic Rock Chip Samples – February 2025

Telfer South Project - Hasties Prospects

Criteria	JORC Code explanation	Commentary
Sampling techniques	<ul style="list-style-type: none"> <i>Nature and quality of sampling (eg cut channels, random chips, or specific specialised industry standard measurement tools appropriate to the minerals under investigation, such as down hole gamma sondes, or handheld XRF instruments, etc). These examples should not be taken as limiting the broad meaning of sampling.</i> <i>Include reference to measures taken to ensure sample representivity and the appropriate calibration of any measurement tools or systems used.</i> <i>Aspects of the determination of mineralization that are Material to the Public Report.</i> <i>In cases where ‘industry standard’ work has been done this would be relatively simple (eg ‘reverse circulation drilling was used to obtain 1 m samples from which 3 kg was pulverised to produce a 30 g charge for fire assay’). In other cases more explanation may be required, such as where there is coarse gold that has inherent sampling problems. Unusual commodities or mineralization types (eg submarine nodules) may warrant disclosure of detailed information.</i> 	<ul style="list-style-type: none"> Historic random orientation rock chip samples and selective rock chip samples were collected based on geological mapping and visibly mineralised outcrop or gossanous outcrops. A total of 163 historic rock chip samples are reported with confirmed locations. Newcrest 1991, reported that random sample locations were plotted on 1:25,000 scale colour aerial photographs and selective samples were plotted on 1:20,000 scale geological base map APEX Geoscience digitised all historic rock chip sample locations from detailed cross-checked georeferenced maps.
Drilling techniques	<ul style="list-style-type: none"> <i>Drill type (eg core, reverse circulation, open-hole hammer, rotary air blast, auger, Bangka, sonic, etc) and details (eg core diameter, triple or standard tube, depth of diamond tails,</i> 	<ul style="list-style-type: none"> Not Applicable

Criteria	JORC Code explanation	Commentary
	<p><i>face-sampling bit or other type, whether core is oriented and if so, by what method, etc).</i></p>	
<p>Drill sample recovery</p>	<ul style="list-style-type: none"> • <i>Method of recording and assessing core and chip sample recoveries and results assessed.</i> • <i>Measures taken to maximise sample recovery and ensure representative nature of the samples.</i> • <i>Whether a relationship exists between sample recovery and grade and whether sample bias may have occurred due to preferential loss/gain of fine/coarse material.</i> 	<ul style="list-style-type: none"> • Not Applicable
<p>Logging</p>	<ul style="list-style-type: none"> • <i>Whether core and chip samples have been geologically and geotechnically logged to a level of detail to support appropriate Mineral Resource estimation, mining studies and metallurgical studies.</i> • <i>Whether logging is qualitative or quantitative in nature. Core (or costean, channel, etc) photography.</i> • <i>The total length and percentage of the relevant intersections logged.</i> 	<ul style="list-style-type: none"> • Historic rock chips samples have no record of geological logging and are not appropriate for Mineral Resource Estimation, mining studies or metallurgical studies.
<p>Sub-sampling techniques and sample preparation</p>	<ul style="list-style-type: none"> • <i>If core, whether cut or sawn and whether quarter, half or all core taken.</i> • <i>If non-core, whether riffled, tube sampled, rotary split, etc and whether sampled wet or dry.</i> • <i>For all sample types, the nature, quality and appropriateness of the sample preparation technique.</i> 	<ul style="list-style-type: none"> • While it was not recorded in the Newcrest historic report it is assumed that between 0.5 to 1 kg sample was collected for analysis. Samples were collected from the outcrop location. • All samples were analysed by Australian Laboratory Services Pty Ltd where they were crushed and pulverised to a

Criteria	JORC Code explanation	Commentary
	<ul style="list-style-type: none"> • <i>Quality control procedures adopted for all sub-sampling stages to maximise representivity of samples.</i> • <i>Measures taken to ensure that the sampling is representative of the in situ material collected, including for instance results for field duplicate/second-half sampling.</i> • <i>Whether sample sizes are appropriate to the grain size of the material being sampled.</i> 	<p>nominal 200 microns and then digested in perchloric acid.</p> <ul style="list-style-type: none"> • Historic sample preparation to 1991 industry standards.
<p>Quality of assay data and laboratory tests</p>	<ul style="list-style-type: none"> • <i>The nature, quality and appropriateness of the assaying and laboratory procedures used and whether the technique is considered partial or total.</i> • <i>For geophysical tools, spectrometers, handheld XRF instruments, etc, the parameters used in determining the analysis including instrument make and model, reading times, calibrations factors applied and their derivation, etc.</i> • <i>Nature of quality control procedures adopted (eg standards, blanks, duplicates, external laboratory checks) and whether acceptable levels of accuracy (ie lack of bias) and precision have been established.</i> 	<ul style="list-style-type: none"> • Historic rock chip samples All samples were analysed by Australian Laboratory Services Pty Ltd where they were crushed and pulverised to a nominal 200 microns and then digested in perchloric acid. Copper, lead, zinc, cobalt, bismuth and arsenic were assayed by AAS and gold by fire assay before AAS determination. • The assay method and laboratory procedures were considered appropriate for this style of mineralisation. • No geophysical tools were used in this program. • No Historic Certified Reference Materials (CRM's) are available.
<p>Verification of sampling and assaying</p>	<ul style="list-style-type: none"> • <i>The verification of significant intersections by either independent or alternative company personnel.</i> • <i>The use of twinned holes.</i> • <i>Documentation of primary data, data entry procedures, data verification, data storage</i> 	<ul style="list-style-type: none"> • Consultant geologists, from Apex Geoscience ("Apex"), were involved in the collation of the historic data and the process of data capture including sample location verification, assay confirmation from historic certified assay results from Australian Laboratory Services Pty Ltd. • No Twin holes are reported.

Criteria	JORC Code explanation	Commentary
	<p><i>(physical and electronic) protocols.</i></p> <ul style="list-style-type: none"> • <i>Discuss any adjustment to assay data.</i> 	<ul style="list-style-type: none"> • Historic Data was reported by Australian Laboratory Services Pty Ltd and no adjustment of data was undertaken. • All assay results were verified by company personnel and the Qualified Person before release.
<p>Location of data points</p>	<ul style="list-style-type: none"> • <i>Accuracy and quality of surveys used to locate drill holes (collar and down-hole surveys), trenches, mine workings and other locations used in Mineral Resource estimation.</i> • <i>Specification of the grid system used.</i> • <i>Quality and adequacy of topographic control.</i> 	<ul style="list-style-type: none"> • Historic (Newcrest 1991), reported that random sample locations were plotted on 1:25,000 scale colour aerial photographs and selective samples were plotted on 1:20,000 scale geological base map. • APEX Geoscience digitised all historic rock chip sample locations from detailed cross-checked georeferenced maps • Grid projection is MGA94, Zone 51. • Elevation data for the rock chip samples were populated from a digital Elevation Model created from drill hole survey locations The accuracy of the DTM is estimated to be better than 5m
<p>Data spacing and distribution</p>	<ul style="list-style-type: none"> • <i>Data spacing for reporting of Exploration Results.</i> • <i>Whether the data spacing and distribution is sufficient to establish the degree of geological and grade continuity appropriate for the Mineral Resource and Ore Reserve estimation procedure(s) and classifications applied.</i> • <i>Whether sample compositing has been applied.</i> 	<ul style="list-style-type: none"> • Historic data spacing is based on detailed geological mapping (1:20,000) and is considered appropriate for the type of sample collected. Spacing varies from 10m to 200m spacing, but typically 10 to 20m spacing. • No compositing was applied by Newcrest to the historic data
<p>Orientation of data in relation to geological structure</p>	<ul style="list-style-type: none"> • <i>Whether the orientation of sampling achieves unbiased sampling of possible structures and the extent to which this is known, considering the deposit type.</i> • <i>If the relationship between the drilling orientation and the</i> 	<ul style="list-style-type: none"> • The historic data was collected on a local grid oriented 130° (magnetic) following to overall strike of mineralisation. Rock chip samples fall within the grid baseline orientation.

Criteria	JORC Code explanation	Commentary
	<p><i>orientation of key mineralised structures is considered to have introduced a sampling bias, this should be assessed and reported if material.</i></p>	
<p>Sample security</p>	<ul style="list-style-type: none"> • <i>The measures taken to ensure sample security.</i> 	<ul style="list-style-type: none"> • Sample security measures adopted by Newcrest personnel was not document in the historic report.
<p>Audits or reviews</p>	<ul style="list-style-type: none"> • <i>The results of any audits or reviews of sampling techniques and data.</i> 	<ul style="list-style-type: none"> • No formal audits or reviews have been performed on the project, to date. However, where applicable historic data has been assessed on current industry standards. • Verification work was carried out by reputable companies using industry best practice.

Section 2 Reporting of Exploration Results

(Criteria listed in the preceding section also apply to this section.)

Criteria	JORC Code explanation	Commentary
Mineral tenement and land tenure status	<ul style="list-style-type: none"> • <i>Type, reference name/number, location and ownership including agreements or material issues with third parties such as joint ventures, partnerships, overriding royalties, native title interests, historical sites, wilderness or national park and environmental settings.</i> • <i>The security of the tenure held at the time of reporting along with any known impediments to obtaining a licence to operate in the area.</i> 	<ul style="list-style-type: none"> • The historic rock chip samples were collected over tenements E 45/4336, E 45/4568, P 45/2983 and P 45/2929, which is held 100% by SOUTH TELFER MINING PTY LTD, a 100% owned subsidiary of Rincon Resources Ltd. • The Project is located 260km ESE of Marble Bar in Western Australia. • The tenements subject to this report are in good standing with the Western Australian Department of Mines & Petroleum.
Exploration done by other parties	<ul style="list-style-type: none"> • <i>Acknowledgment and appraisal of exploration by other parties.</i> 	<ul style="list-style-type: none"> • The majority of past exploration work at the Hasties deposit has been completed by Rincon Resources which comprises RAB, RC and diamond drilling. Newcrest Mining completed the early work on the project that identified outcropping gold and copper mineralisation. The reports are available on the West Australian Mines Department WAMEX open file library. • Where relevant, assay data from this earlier exploration has been incorporated into Company databases.
Geology	<ul style="list-style-type: none"> • <i>Deposit type, geological setting and style of mineralization.</i> 	<ul style="list-style-type: none"> • The Hasties mineralisation is interpreted to be associated with a significant anticline fold hinge zone. Geological interpretation indicates steep dipping mineralised structures are controlling gold mineralisation whilst copper mineralisation appears to be primarily controlled by fold structures within a preferred rock type. The overall mineral system has been broadly defined over a combined strike up to ~700m long, over 100m depth starting from surface, and widths up to 50m near surface.
Drill hole Information	<ul style="list-style-type: none"> • <i>A summary of all information material to the understanding of the exploration results including a tabulation of the following information for all Material drill holes:</i> <ul style="list-style-type: none"> ○ <i>easting and northing of the drill hole collar</i> ○ <i>elevation or RL (Reduced Level – elevation above sea level in metres) of the</i> 	<ul style="list-style-type: none"> • Not Applicable as no drilling is reported. • A table of all historic rock chip samples has been included in this ASX announcement.

Criteria	JORC Code explanation	Commentary
	<ul style="list-style-type: none"> ○ <i>drill hole collar</i> ○ <i>dip and azimuth of the hole</i> ○ <i>down hole length and interception depth</i> ○ <i>hole length.</i> ● <i>If the exclusion of this information is justified on the basis that the information is not Material and this exclusion does not detract from the understanding of the report, the Competent Person should clearly explain why this is the case.</i> 	
Data aggregation methods	<ul style="list-style-type: none"> ● <i>In reporting Exploration Results, weighting averaging techniques, maximum and/or minimum grade truncations (eg cutting of high grades) and cut-off grades are usually Material and should be stated.</i> ● <i>Where aggregate intercepts incorporate short lengths of high grade results and longer lengths of low grade results, the procedure used for such aggregation should be stated and some typical examples of such aggregations should be shown in detail.</i> ● <i>The assumptions used for any reporting of metal equivalent values should be clearly stated.</i> 	<ul style="list-style-type: none"> ● No weighted intersections or modifications to the original data has been conducted. ● No high cuts have been applied. ● Metal equivalent values are not being reported.
Relationship between mineralization widths and intercept lengths	<ul style="list-style-type: none"> ● <i>These relationships are particularly important in the reporting of Exploration Results.</i> ● <i>If the geometry of the mineralization with respect to the drill hole angle is known, its nature should be reported.</i> ● <i>If it is not known and only the down hole lengths are reported, there should be a clear statement to this effect (eg 'down hole length, true width not known').</i> 	<ul style="list-style-type: none"> ● No drilling report.
Diagrams	<ul style="list-style-type: none"> ● <i>Appropriate maps and sections (with scales) and tabulations of intercepts should be included for any</i> 	<ul style="list-style-type: none"> ● Appropriate plans and sections have been included in this press release.

Criteria	JORC Code explanation	Commentary
	<p><i>significant discovery being reported These should include, but not be limited to a plan view of drill hole collar locations and appropriate sectional views.</i></p>	
<p>Balanced reporting</p>	<ul style="list-style-type: none"> • <i>Where comprehensive reporting of all Exploration Results is not practicable, representative reporting of both low and high grades and/or widths should be practiced to avoid misleading reporting of Exploration Results.</i> 	<ul style="list-style-type: none"> • A table containing all historic rock chip results has been included in the release.
<p>Other substantive exploration data</p>	<ul style="list-style-type: none"> • <i>Other exploration data, if meaningful and material, should be reported including (but not limited to): geological observations; geophysical survey results; geochemical survey results; bulk samples – size and method of treatment; metallurgical test results; bulk density, groundwater, geotechnical and rock characteristics; potential deleterious or contaminating substances.</i> 	<ul style="list-style-type: none"> • Rincon Resources just completed an aerial Mobile Magento-Telluric (MMT) over the project area. The results of this work is still pending at this stage. MMT is a passive geophysical method which uses natural time variations of the earth's magnetic and electric fields to measure the electrical resistivity of the sub surface.
<p>Further work</p>	<ul style="list-style-type: none"> • <i>The nature and scale of planned further work (eg tests for lateral extensions or depth extensions or large-scale step-out drilling).</i> • <i>Diagrams clearly highlighting the areas of possible extensions, including the main geological interpretations and future drilling areas, provided this information is not commercially sensitive.</i> 	<ul style="list-style-type: none"> • The company is currently reviewing and compiling the historic work in detail to build on Rincons database and geological and mineralisation models in order to plan the 2026 drilling program.