

# ASX MARKET ANNOUNCEMENT



Wednesday 25 February 2026

ASX : ALR

## South Oko Returns High-Grade Gold up to 7g/t; and Drill Contractor Appointed

### SOUTH OKO

- A Grab sample collected from base of Trench 2 at South Oko (“SOKO”), exposed sheared quartz and pyrite, has returned an assay of 7.03g/t Au.
- This is the first and only sub-surface grab sample result on the mafic unit, providing the initial ground-truth confirmation of in-situ high-grade gold mineralisation identified at SOKO.
- Geological mapping and visual observations from the trenching program have provided strong encouragement to expand the exploration scope at SOKO. Accordingly, the company will incorporate a RAB drill rig to undertake preliminary drilling and efficient deeper testing of the saprolite profile.
- Shallow RAB drilling across SOKO is expected to commence in parallel with the diamond drill program at North Peters, accelerating target refinement ahead of larger-scale diamond drilling at SOKO.
- RAB drilling will allow a much greater understanding of the exploration data at SOKO versus current auger drilling:
  - Allowing 10x more drilling meterage to be completed per day
  - Allowing for better understanding of mineralisation profile and greater depth penetration
  - Potential to identify areas of primary mineralisation prior to maiden diamond program
- Five trenches spanning a combined ~1.3km length have been completed, logged, sampled and bagged.
- SOKO ground geophysics (Magnetics, IP, Pole-Dipole) nearing completion, with results expected shortly after.

### DIAMOND DRILLING

- OGD Drilling (Guyana) Inc. (“OGD”) appointed as drill contractor for upcoming maiden diamond drill program.
- OGD have previously completed in excess of 200,000m of drilling in Guyana under the guidance of Rich Munson and Pascal Van Osta, both of whom now hold senior positions at Altair. This appointment builds on a well-established and trusted working relationship, providing Altair with proven in-country operational expertise and confidence in the effective execution of its drilling programs.
- Initial maiden diamond drill program will be focused on North Peters (“NP”), consisting of 3,000 – 5,000m, expected to commence shortly, no later than mid-April.
- In parallel, RAB drilling is expected to commence at SOKO in conjunction with diamond drilling at NP.
- Immediately upon completion of diamond drilling at North Peters, Altair intends to commence its maiden diamond drill program of 10,000 – 15,000m at South Oko.

### OLYMPIC DOMAIN

- Prior to the 19<sup>th</sup> February 2026 hearing, Altair Minerals Limited (“ALR”) and BHP Olympic Dam Corporation Pty Ltd (“BHP”) had respectively filed competing applications regarding specific discovery (“Applications”). The Applications are listed for Argument on 16<sup>th</sup> April 2026. Altair will continue to defend the fair value of the Olympic Domain Project and ensure its exploration rights are not diminished.

**Altair Minerals Limited CEO, Faheem Ahmed, commented:**

*“I’m pleased to provide a broad range of exploration updates across Greater Oko, alongside the initial grab sample assay results from South Oko (SOKO). As demonstrated, Altair is advancing Greater Oko at a rapid pace, with multiple exploration programs and logistical operations progressing in parallel.*

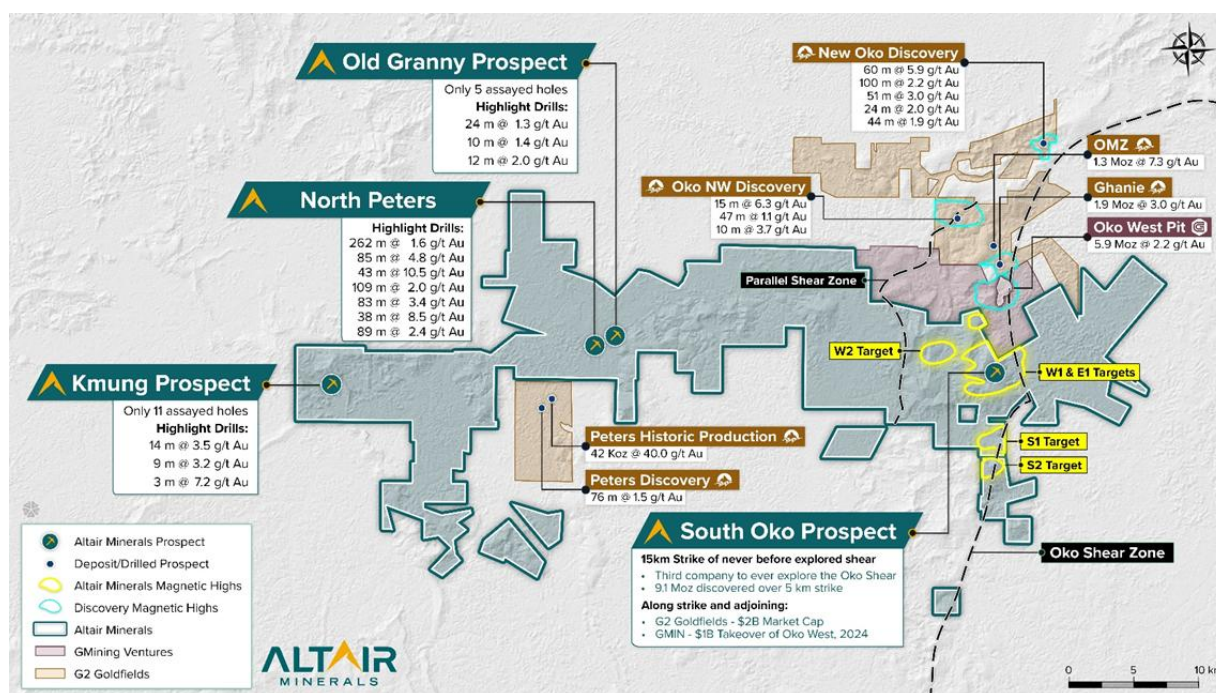
*At SOKO, we are taking a disciplined, scientific and methodical approach to exploration to maximise the probability of success as we move toward our maiden diamond drilling program. Exploration is a process of assembling a complex geological puzzle — and with each dataset piece being generated, the picture is becoming clearer. Encouragingly, we are beginning to see consistent indicators that point toward the potential for a significant discovery.*

*The trenching program at SOKO has been instrumental in improving our understanding of the underlying geology, structural controls and lithological framework. Even prior to receiving assay results, trench mapping and logging provided critical ground-truth validation, enabling us to refine our geological model. Importantly, SOKO appears to host the same extensional structural systems as our northern neighbours, which have led to multiple world-class discoveries and the delineation of two-billion-dollar gold assets adjacent to Altair’s tenure.*

*The geological sequence being defined at SOKO mirrors the same package of units that hosts multi-million-ounce gold deposits along strike. We are also observing comparable structural deformation patterns. The imminent completion of our ground geophysical surveys will provide an additional layer of validation and further refine our targeting framework.*

*Notably, the first and only sub-surface grab sample collected from within the mafic unit at SOKO has returned an exceptional 7.03g/t Au. This result represents a meaningful breakthrough, providing the first ground confirmation of in-situ high-grade gold mineralisation at the prospect. While previous work at SOKO had defined strong surface geochemical anomalies, this result materially strengthens our confidence in the underlying prospectivity of the system and reinforces our strategy as we progress toward drilling.*

*The swift execution of programs is a result of the diligent efforts by our on-ground Guyana exploration team – led by Pascal Van Osta. We expect numerous high impact catalysts and exploration results over the coming months as we head into our diamond drill program.”*



**Figure 1:** Plan view of the Greater Oko Project and four key target areas defined to date – South Oko (SOKO), North Peters (NP), Old Granny (OG) and Kmung (KM) with Altair’s project size in comparison to its two predecessors G2 Goldfields (\$2.2 Billion Market Cap) and GMining Ventures (\$1 Billion takeover of Oko West from Reunion Gold). For clarity, both G2 and GMIN resources are located outside of Altair’s Greater Oko Project. <sup>1,2,3,4,9,10,11,12,13,14,19,20</sup>

## South Oko Exploration Update

The exploration team continues to make rapid progress at South Oko, with auger, trench and systematic soil sampling advancing in parallel. Ground geophysical surveys, including magnetics and induced polarisation (IP) utilising a pole-dipole configuration, are also nearing completion, with results expected shortly.

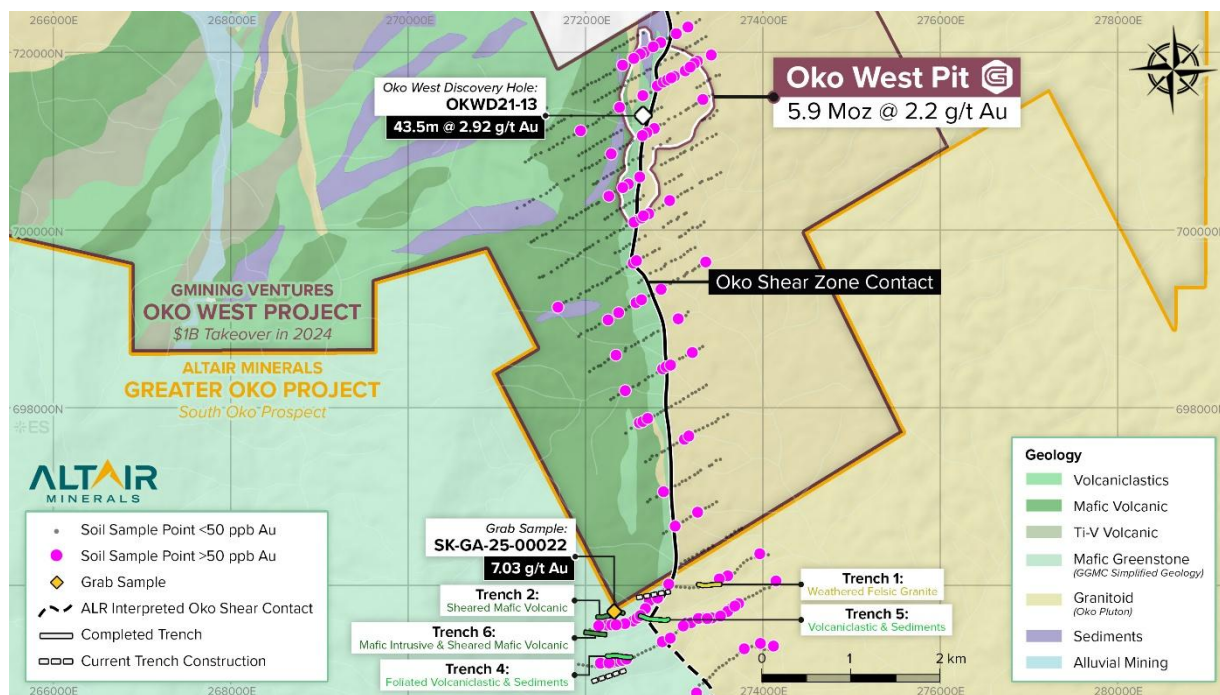
The geochemical programs have been strategically designed to generate complementary datasets that integrate well with geophysics. Together, these programs are aimed at rapidly refining and prioritising multiple high-confidence targets at SOKO ahead of the planned large-scale diamond drilling campaign.

### Trenching Geology

A total of five trenches has been completed to date, including systematic sampling and bagging, covering approximately ~1.3km of strike. The sixth and seventh trenches are scheduled for completion shortly and will then be followed by sampling, dispatchment and assays.

Detailed trench mapping and geological logging at South Oko (“SOKO”) have proven to be highly effective in refining the Company’s understanding of the underlying geology, structural framework and mineralisation controls. The data generated to date has been instrumental in vectoring exploration towards:

- Right Geology:** Delineation of mafic units and vectoring the granitoid-greenstone contact.
- Right Structure:** Identifying of shear zones, foliation and favourable structural corridors.
- Right Lithology:** Improved understanding of the weathering profile, volcanic-sedimentary host units, metamorphism, leached duricrust development and regolith architecture.



**Figure 2:** Trench locations at SOKO with detailed geological map on the neighbouring GMIN permit and integrated with a regional geological map on Altair permit. Black dotted line is the structural interpretation and continuation of the granite-greenstone contact at SOKO which is conducive to shearing. Black solid line is the confirmed contact as mapped out by GMIN.<sup>1,6</sup>

**Trench 1:** Confirmed the presence of the Oko Pluton Granitoid, which intersected through weathered felsic granite unit.

**Trench 2:** Represented a major breakthrough in confirming the extension of the shear structure present at neighbouring deposits and the key structural element in emplacing multi-million-ounce deposits along strike. Trench 2 predominantly intersected mafic meta-volcanics which showed a gradual change in brecciated texture to fine grained, locally sheared with minor folds and quartz veins. A grab sample of the quartz vein within Trench 2 assayed an exceptional **7.03g/t Au**, being the first confirmation of high-grade in-situ mineralisation present within SOKO.



**Trench 4:** Successfully confirmed presence of the foliated volcanoclastics and sedimentary host unit (VCSHU), which is an important local lithological unit that hosts the bulk of mineralisation at the Oko West deposit – due to the VCSHU being conducive to shearing, fracturing and porosity for gold enrichment.

**Trench 5:** Demonstrated the northern continuity of the volcanoclastic and sedimentary unit encountered in Trench 4. Trench 5 initiated within a unit of sheared mafic volcanics on the eastern border and the remainder of the trench continued through the package of volcanoclastic and sedimentary units towards to west.

**Trench 6:** Predominantly consisted of a mafic intrusive and transitioning to mafic volcanics with significant sheared zones observed at the contact between the intrusive and volcanic units. Trench 6 ended on the western border within the unit of sheared mafic volcanics. Quartz veining was observed periodically through this trench at 7m, 183m and 196m.

The trenches to date have confirmed SOKO hosts all key geological elements and signatures analogous to the world-class discoveries adjoining the project area – outlining a significant discovery potential at SOKO.

**The trenching to date in summary has confirmed:**<sup>1,3</sup>

- **Presence of sheared structures and confirmation of the Oko Shear extension** – which is the key structural host to over 9Moz Au in recent discoveries along strike.
- **Presence of sheared mafic volcanics and the key mineralisation hosting unit of volcanoclastic-meta sediments**, seen at neighbouring deposits.
- **Confirmation that the Oko Shear Contact sits between Trench 1 (Oko Pluton Granite) and Trench 2 (Mafic Volcanics)**, with a package of volcanoclastic sediments sitting in between the two trenches – analogous to the overall geological sequence of neighbouring discoveries.

With highlights from the limited grab sampling program reported, having confirmed:

- **High-grade gold and in-situ mineralisation hosted within sheared quartz.**
- **The first and only grab sample taken sub-surface within a trench positioned on the mafic geological unit has returned 7.03g/t Au.**
- Saprolite grab samples continue to show **anomalous levels of gold up to 778ppb Au**, indicating the anomalous footprint still retains potential to grow.

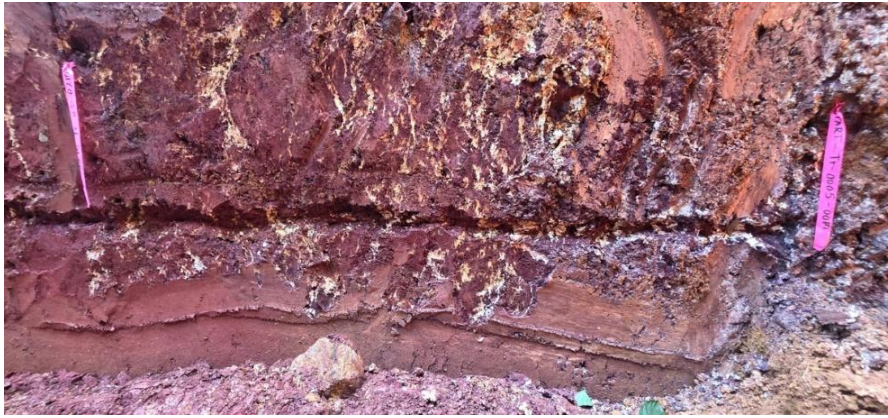


**Figure 3:** Trench 2 ending in the western border in highly fractured and sheared mafic volcanics at 215.5m.

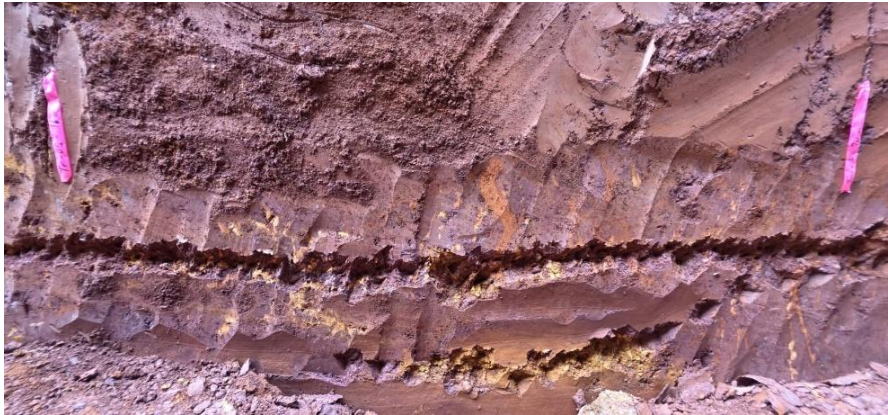


**Figure 4:** Trench 4, saprolite volcanic-sedimentary unit at 0m.





**Figure 5:** Trench 5 sheared and fractured mafic volcanics at the very eastern end at 0m.



**Figure 6:** Trench 5 at 74m, volcanic-sedimentary unit.



**Figure 7:** Trench 6 transition between the mafic intrusive and mafic volcanics at 192m with interpreted sheared contact.



**Figure 8:** Marking, mapping and logging of Trench 6

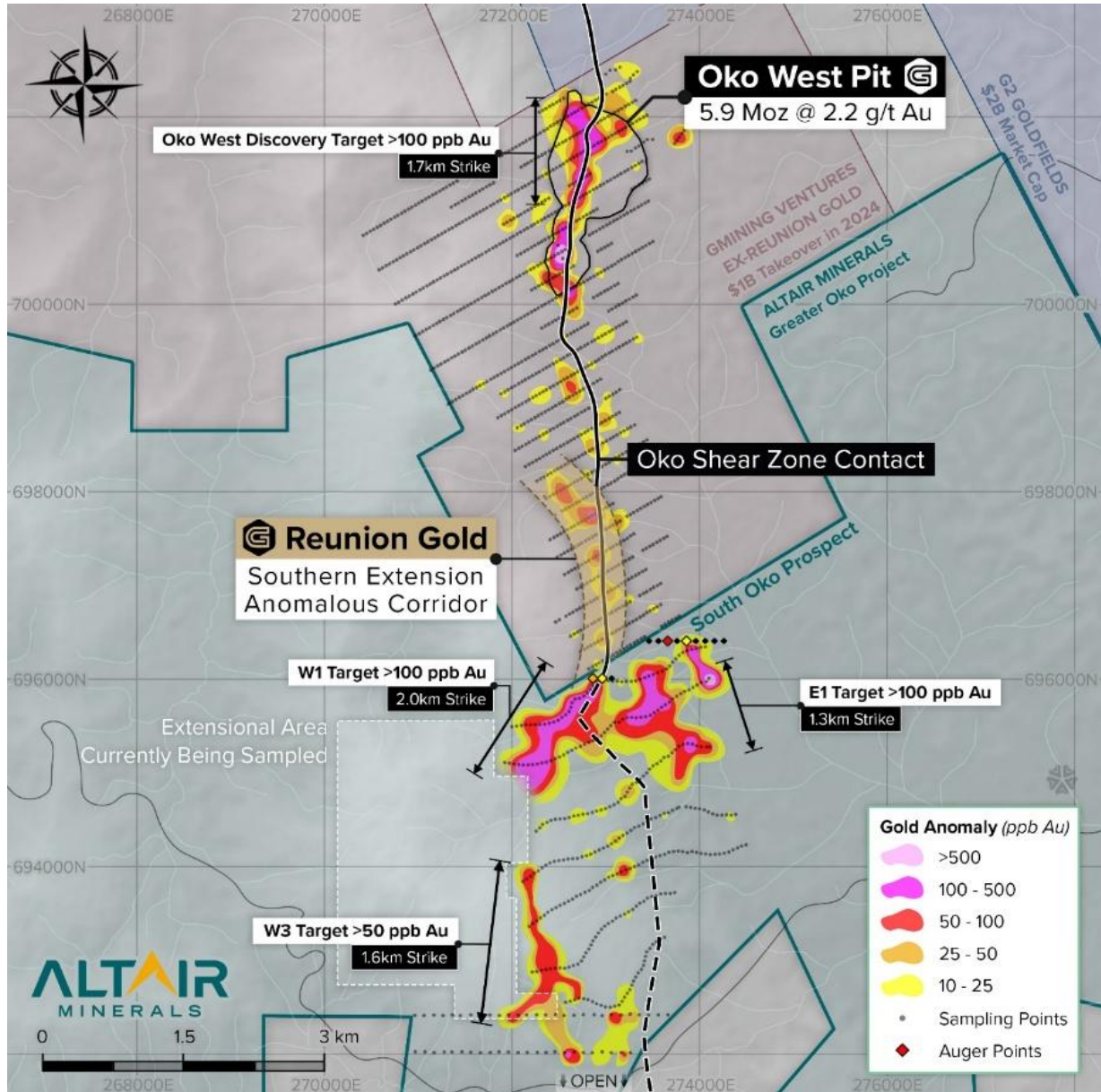


**Soils**

From the 2026 program, 450 points across the western extension of W1 target area has now been completed, with another 44 samples expected to be completed by this week prior to dispatching for assays.

As previously reported, in Figure 9 below, the W1 target currently represents the most compelling geochemical anomaly at SOKO, particularly when taking into the consideration its position with the Oko Shear Contact, lithology and confirmation of favourable geological package from trenching.

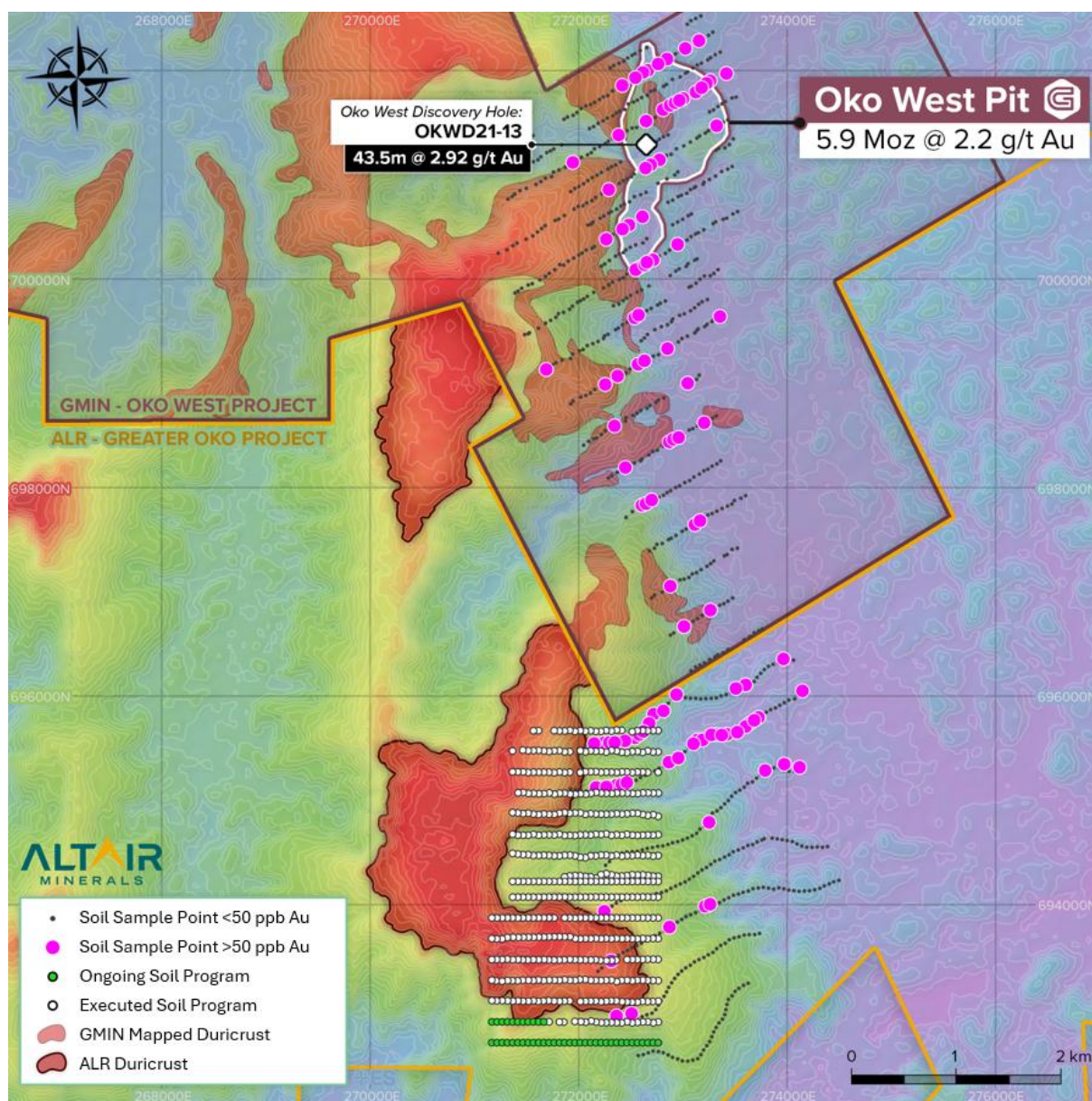
The W1 target is a ~2km strike length, >100ppb Au gold in soil anomaly, which is larger than the soil anomalism that led to the Oko West discovery (measuring ~1.7km strike, >100ppb Au contour)<sup>1</sup>. Furthermore, the W1 target remains open both to the west and southwest, making the extensional sampling imperative to gain a further understanding of the anomaly distribution and vector towards the potential nearby source deposit that has led to this distinct and prominent surface anomalism.



**Figure 9:** Soil anomalies at South Oko Prospect (Au ppb) with direct scale and soil anomaly comparison which was used by GMining Ventures (Ex. Reunion Gold). Coordinates in WGS84, UTM Zone 21N.<sup>1,2,4,21</sup>

Figure 10 below demonstrates that as soil sampling moves towards the west, into higher elevations, the laterite duricrust develops a leached cap that masks anomalies. This phenomenon can be visible in the soil sampling lines directly west of the Oko West pit outline, which presumably has masked gold anomaly responses on the duricrust.





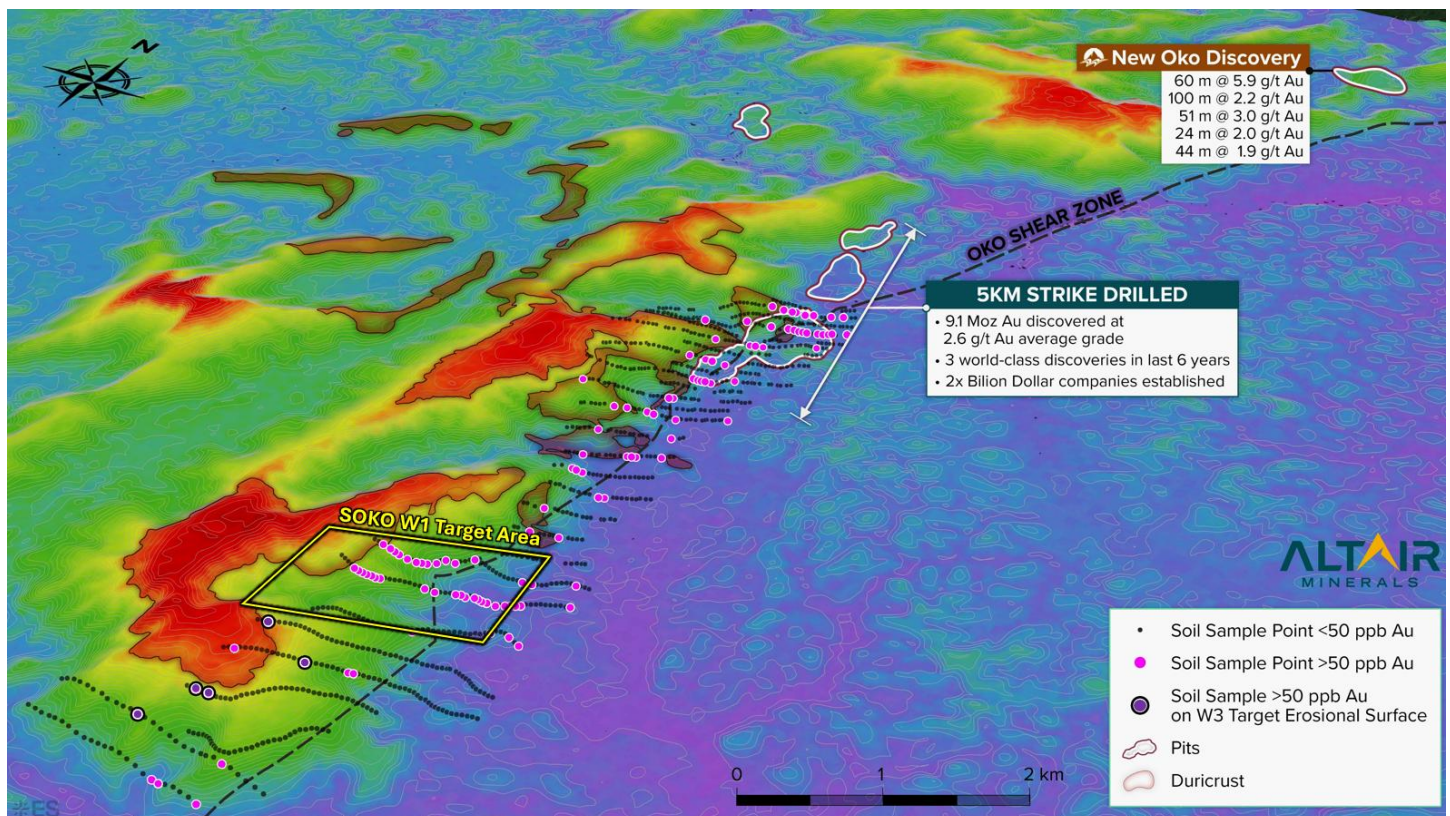
**Figure 10:** 2026 Soil sampling program progress ongoing at SOKO. Overlaid with the duricrust mapped within Oko West property and projected duricrust partially mapped at SOKO. Coordinates in WGS84, UTM Zone 21N.<sup>1,5</sup>

As seen in Figure 10 above and Figure 11 below, the Oko West soil sampling program had also displayed a prominent cluster of >50ppb Au anomalies sitting directly on top of the 5.9Moz Au deposit, in stark contrast to the remainder of the intermittent and sporadic anomalies along the grid. Similarly, the W1 target represents an emergence of a second distinct contiguous cluster of gold in soil anomalies which stands out from the remainder of the grid and is highly prospective of a secondary source deposit.

Figure 10 displays the key structural control (Oko Shear Contact) which has hosted a chain of major discoveries, distinguished in the image by the abrupt contrast between the Oko Pluton and greenstone belt. The W1 target area demonstrates the robust geochemical anomalism which is probable to be a result of a proximal source sitting adjacent to the controlling structure.

Furthermore, anomalies identified in the erosional surfaces adjacent to the duricrust is a highly compelling indicator for a prospective blind target. In Figure 11 below, this phenomenon is visible by the soil anomalies on the W3 Target (just south of W1 Target), with anomalies situated on the erosional surface of the duricrust (highlighted by dark purple circles) – representing a secondary compelling target area. Given the potential drill target to the south of W1 area is situated under a duricrust, it is likely to mask any soil sampling response and more than likely will require auger/RAB drilling to penetrate below transported duricrust material into the saprolite to determine the continuity and validate if a gold anomaly is truly present.





**Figure 11:** Topographic perspective view across the Oko region with previously reported soil sampling program within the B-Horizon completed by GMIN and ALR. With key structural control of Oko Shear Contact outlined alongside pit outlines for deposits and discoveries made across this distinct structural control. East of Oko Shear = Granitoid Oko Pluton. West of Oko Shear = Greenstone belt, seen by distinct change in topographical character. “Pits” refer to MRE Pit design outlines from PEA/FS studies conducted by neighbouring asset. <sup>1,2,3,4,5,9,10,11,12</sup>

### Grab Samples

A total of 11 grab samples were collected during this campaign. Of these, two samples were taken from mafic greenstones located west of the Oko Shear Contact. Only one sub-surface sample was collected from a weathered quartz outcrop at the base of Trench 2, which returned a high-grade result of 7.03g/t Au.

The remaining grab samples were collected in and around the SOKO camp area, including from historic artisanal workings and tailings overlaying the Oko Pluton Granitoid. Notably, in one area, during excavation activities for camp logistics had exposed weathered quartz within saprolite, which was grab sampled and returned a highly anomalous assay of 778ppb Au. This sample was located approximately 500m east of the Oko Shear Contact within the felsic unit and highlights the significant gold anomalism surrounding the main shear corridor. The result reinforces the scale of the system and the potential for additional mineralised zones to be defined through systematic exploration.

In addition, two grab samples collected from historic sandy alluvial tailings, which returned highly anomalous values of 217ppb Au and 122ppb Au respectively. These samples are situated between the W1 and E1 targets and may indicate continuity between the two anomalous corridors, supporting the potential for these zones to amalgamate into a broader mineralised system.

### Drill Contractor Appointed

Altair has contracted OGD Drilling (Guyana) Inc. (“OGD”) to undertake its maiden diamond drilling program in Guyana, commencing at North Peters Prospect no later than mid-April. Drilling will begin immediately upon completion of the North Peters drill camp.

OGD have previously completed in excess of 200,000m of drilling in Guyana under the guidance of Rich Munson and Pascal Van Osta, both of whom now hold senior positions at Altair. This appointment builds on a well-established and trusted working relationship, providing Altair with proven in-country operational expertise and confidence in the effective executing of its drilling programs.



The North Peters maiden diamond drill program is expected to comprise approximately 3,000 – 5,000m. Upon completion, drill rigs will be mobilised to the South Oko prospect to undertake a further ~15,000m of diamond drilling. The commencement of drilling at North Peters marks the beginning of an extensive 12+ month drilling campaign across multiple high-priority targets and prospects, with the objective of delivering at least one potential major discovery prior to completion.

Following encouraging geological observations from the initial trenching program at South Oko, the Company believes an expanded exploration scope is warranted. Accordingly, in parallel with the diamond drilling program at North Peters, a short-hole and wide-spaced RAB drilling program will commence at South Oko.

The RAB program is designed to systematically test saprolite at depth, refine the understanding of mineralisation zones and geochemical anomalies, and assess the potential for intersecting primary gold mineralisation. Furthermore, RAB drilling will allow penetration through areas where a hard lateritic duricrust is present, which tends to mask geochemical anomalies from soil sampling and provide clear data if a blind target or anomalism is sitting beneath. This work will significantly enhance targeting precision ahead of the larger diamond drilling campaign at South Oko, increasing the probability of successful discovery.

### South Oko Trench Camp

Trench camp at SOKO is nearing completion, with three operational staff accommodation, administrative, storage buildings and vehicle/machinery wash bays. A new sample storage shed is currently being constructed. The camp will be upgraded to a fully operational drill camp as SOKO approaches diamond drilling program.



**Figure 12:** SOKO trench camp progress in early February.



**Figure 13:** SOKO trench camp kitchen area and temporary sample storage and dispatchment area



**Olympic Domain Project – South Australia**

On 19 February 2026, there was a further hearing before Warden Barnett in the South Australian Warden’s Court matter between Altair Minerals Limited (ALR) and BHP Olympic Dam Corporation Pty Ltd (BHP). Prior to the hearing the parties had respectively filed competing applications each stating that the proper next step in the proceedings is that the other party ought to be ordered to give specific discovery (Applications). Warden Barnett determined that he would hear the competing Applications and made orders that the Applications are listed for Argument on 16 April 2026 at 10am before him.

Altair’s position is that BHP ought to give specific discovery of documents which fully detail the nature and scope of BHP’s proposed activities including both constructing infrastructure and use of the proposed MPL.

Altair will continue to defend the fair value of the Olympic Domain Project and ensure its exploration rights are not materially diminished.

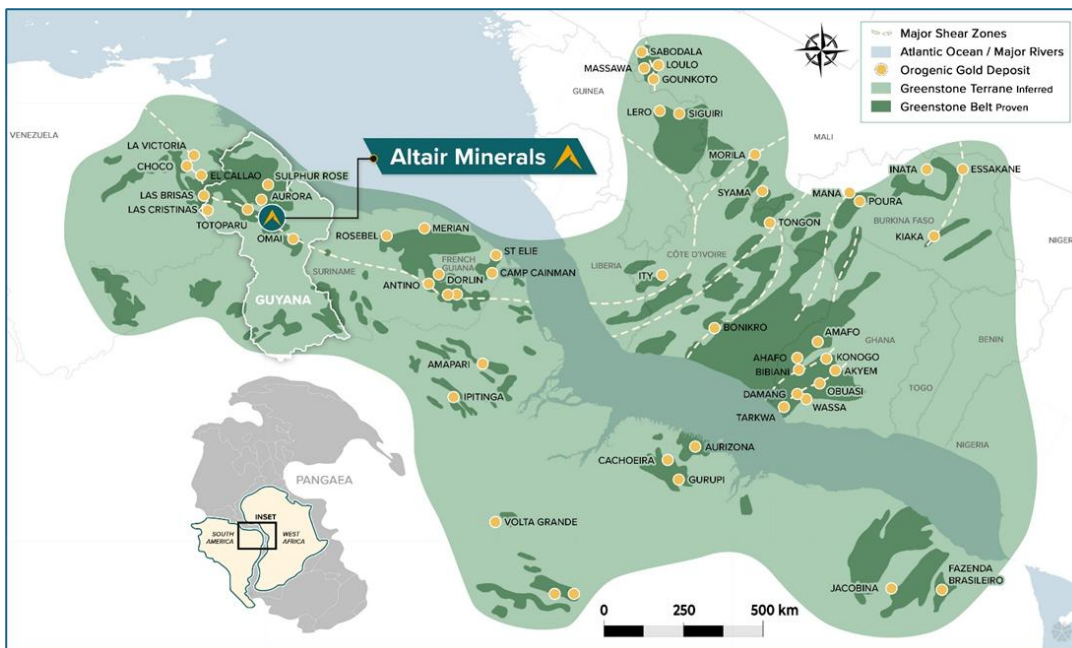
**Guyana**

Guyana has rapidly emerged as a premier gold jurisdiction, drawing increasing attention from major players in the gold exploration space. As the last truly pro-mining and politically stable country within the Guiana Shield, it hosts an extension to West African geology, consisting of the same Birimian Greenstone that has underpinned world-class gold discoveries across West Africa — including in Ghana, Ivory Coast, and Burkina Faso. However, unlike its African counterparts, Guyana remains significantly underexplored.

The 590km<sup>2</sup> contiguous landholding itself within Greater Oko not only represents an irreplicable landholding but is also positioned within one of the most prominent and emerging greenstone belts globally, and 1.5km away from a 5.9Moz discovery, which is expected to go into production over the next 18 months. Recent exploration success by groups such as G2 Goldfields (\$2.3B Market Capitalisation) and Reunion Gold (GMIN took over for \$1Billion in 2024) has already validated the region’s untapped potential, establishing multiple Tier-1 discoveries made from grassroots exploration campaigns.<sup>1,2,4</sup>

**Current public companies actively drilling across the Guiana Shield include:**

- **G2 Goldfields: \$2.2Billion Market Capitalization<sup>4</sup>**
- **Reunion Gold: \$1Billion Takeover by GMining Ventures in 2024<sup>2</sup>**
- **Greenheart Gold: \$143M Market Capitalization<sup>16</sup>**
- **Founders Metals: \$547M Market Capitalization<sup>17</sup>**
- **OMAI Gold Mines: \$1.3B Market Capitalization<sup>18</sup>**



**Figure 14:** Map of the West African Birimian Shield and extension to Guiana Shield with location of major deposits and projects.

**For and on behalf of the board:**

Faheem Ahmed – CEO

This announcement has been approved for release by the Board of ALR.

**About Altair Minerals**

Altair Minerals Limited is listed on the Australian Securities Exchange (ASX) with the primary focus of investing in the resource sector through direct tenement acquisition, joint ventures, farm in arrangements and new project generation. The Company has projects located in South Australia, Western Australia and Queensland with a key focus on its Olympic Domain tenements located in South Australia. The shares of the company trade on the Australian Securities Exchange under the ticker symbol ALR.

**Streamline Statement**

Altair confirms that it is not aware of any new information or data which affects the exploration results and information which has been previously disclosed and cross-referenced and included within this announcement.

**Competent Persons Statement**

The results referenced in this release has been prepared with information compiled by Mr Robert Wason BSc (Hons) Geology, MSc (Mining Geology), a Competent Person who is a Member of the Australasian Institute of Mining and Metallurgy. Mr Wason is an employee of Mining Insights. Mr Wason has sufficient experience relevant to the style of mineralisation and type of deposit under consideration to qualify as a Competent Person as defined in the 2012 edition of the “Australasian Code for Reporting of Exploration Results, Mineral Resources and Ore Reserves”. Mr Wason consents to the inclusion of these exploration results based upon the information in the form and context in which it appears.

**Proximity Statement**

This announcement contains references to exploration results derived by other parties either nearby or proximate to The Greater Oko Project and includes references to topographical or geological similarities to that of the ALR Project. It is important to note that such discoveries or geological similarities do not in any way guarantee that the Company will have any success or similar successes in delineating a JORC compliant Mineral Resource on the Greater Oko Project, if at all.

**Forward Looking Statement**

This announcement contains ‘forward-looking information’ that is based on the Company’s expectations, estimates and projections as of the date on which the statements were made. This forward-looking information includes, among other things, statements with respect to the Company’s business strategy, plans, development, objectives, performance, outlook, growth, cash flow, projections, targets and expectations, mineral reserves and resources, results of exploration and related expenses. Generally, this forward-looking information can be identified by the use of forward-looking terminology such as ‘outlook’, ‘anticipate’, ‘project’, ‘target’, ‘potential’, ‘likely’, ‘believe’, ‘estimate’, ‘expect’, ‘intend’, ‘may’, ‘would’, ‘could’, ‘should’, ‘scheduled’, ‘will’, ‘plan’, ‘forecast’, ‘evolve’ and similar expressions. Persons reading this announcement are cautioned that such statements are only predictions, and that the Company’s actual future results or performance may be materially different. Forward-looking information is subject to known and unknown risks, uncertainties and other factors that may cause the Company’s actual results, level of activity, performance or achievements to be materially different from those expressed or implied by such forward-looking information.

**References**

1. *Feasibility Study NI 43-101 Technical Report Oko West Project, Prepared for GMining Ventures, GMining Services Inc., 06th June 2025*
2. <https://www.miningweekly.com/article/g-mining-buys-reunions-guyana-project-2024-04-23>
3. *G2 Goldfields (TSX: GTWO) announcement dated 18<sup>th</sup> December 2025*
4. *TSE: GTWO, Market Capitalization based on diluted 279,781,035 Shares on Issue (SOI) and Share Price of CAD \$7.58 as of date 30<sup>th</sup> January 2026 and CAD to AUD conversion rate of 1.06.*
5. *ALR Announcement dated 26th August 2025, “South Oko Geochemistry Confirms Oko West Look-Alike Target”*
6. *Reunion Gold Corp. announcement dated 12th August 2021*
7. *ALR Announcement dated 03rd September 2025, “Ex-Reunion Gold Team Joins & New Targets Defined”*



8. ALR Announcement dated 22nd September 2025, "Largest Geochemical Program on Oko Shear Zone Commences"
9. G2 Goldfields (TSX: GTWO) announcement dated 15th July 2025
10. G2 Goldfields (TSX: GTWO) announcement dated 13th May 2025
11. G2 Goldfields (TSX: GTWO) announcement dated 9th June 2025
12. G2 Goldfields (TSX: GTWO) announcement dated 8th September 2025
13. ALR Announcement dated 05th August 2025, "Acquisition of Transformational Gold Project"
14. G2 Goldfields (TSX: GTWO) announcement dated 20<sup>th</sup> November 2019
15. Reunion Gold: Investment Case, Valpal, 20th February 2024
16. TSX-V: GHRT, Market Capitalization based on 154M SOI and closing price of CAD\$0.88 on 30<sup>th</sup> January 2026 and CAD to AUD conversion rate of 1.06.
17. TSX-V: FDR, Market Capitalization based on 115M SOI and closing price of CAD\$4.50 on 30<sup>th</sup> January 2026 and CAD to AUD conversion rate of 1.06.
18. TSX-V: OMG, Market Capitalization based on 671M SOI and closing price of CAD\$1.88 on 30<sup>th</sup> January 2026 and CAD to AUD conversion rate of 1.06.
19. ALR Announcement dated 15th January 2026, "North Peters Uncovers Hits of 85m @ 4.81g/t Au"
20. ALR Announcement dated 08th January 2026, "North Peters High-Grade Intercepts of 89m @ 2.40g/t Au"
21. ALR Announcement dated 27th January 2026, "South Oko Soil Anomaly Extends 1km along Oko Shear"

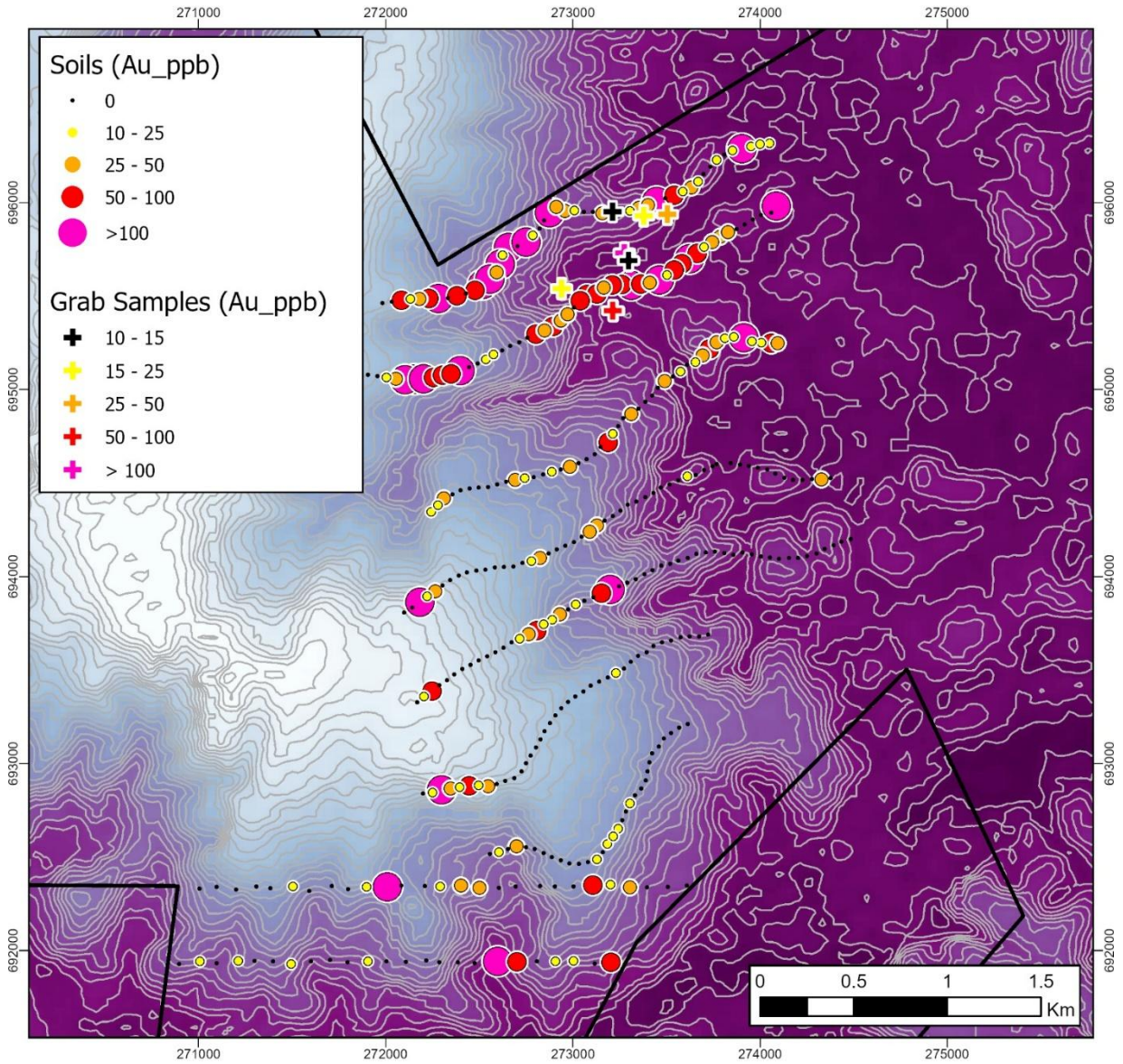
#### APPENDIX A: SOKO Grab Sample Assays

Sample ID	Type	UTM_Zone	East	North	Elevation (m)	Au (ppb)	Geological Unit	Description
SK-GA-25-00009	Grab	21N	273,844	694,727	77	778	NA	Qtz vein, weathered saprolite during excavation work
SK-GA-25-00010	Grab	21N	273,275	695,730	95	217	Felsic Granite	Sand, clay, gravel tailings accumulated aside historic alluvial pit
SK-GA-25-00012	Grab	21N	273,297	695,689	82	24	Felsic Granite	Sand, clay, gravel tailings accumulated aside historic alluvial pit
SK-GA-25-00014	Grab	21N	273,216	695,421	85	28	NA	Sand, silt, gravel dredge waste tailings
SK-GA-25-00015	Grab	21N	273,214	695,422	83	70	NA	Sand, silt, gravel dredge waste tailings
SK-GA-25-00016	Grab	21N	272,939	695,540	85	23	Volcanics	Sand, clay, gravel tailings accumulated aside historic alluvial pit
SK-GA-25-00018	Grab	21N	273,212	695,952	82	13	Felsic Granite	Sand, clay, gravel tailings accumulated aside historic alluvial pit
SK-GA-25-00019	Grab	21N	273,379	695,928	85	22	Felsic Granite	Sand, clay, gravel tailings accumulated aside historic alluvial pit
SK-GA-25-00020	Grab	21N	273,505	695,937	73	36	Felsic Granite	Sand, clay, gravel tailings accumulated aside historic alluvial pit
SK-GA-25-00021	Grab	21N	272,355	695,581	217	<5	Volcanics	Weathered sugary quartz vein sub-crop near Trench 2
SK-GA-25-00022	Grab	21N	272,274	695,622	224	7,030	Volcanics	Weathered sheared quartz vein with limonite after pyrite in Trench 2

**Table 1:** South Oko Grab Sample assays. Coordinates in WGS84, UTM Zone 21N.



**APPENDIX B: Grab Sample Location Map**



**Figure 15:** Visual location points of all grab sample points reported in this announcement within SOKO shown in “+” symbols, overlaid with soil samples. Coordinates are in WGS84, UTM Zone 21N.

# JORC Code, 2012 Edition – Table 1

## Section 1 Sampling Techniques and Data

(Criteria in this section apply to all succeeding sections.)

Criteria	JORC Code explanation	Commentary
<i>Sampling techniques</i>	<ul style="list-style-type: none"> <li><i>Nature and quality of sampling (eg cut channels, random chips, or specific specialised industry standard measurement tools appropriate to the minerals under investigation, such as down hole gamma sondes, or handheld XRF instruments, etc). These examples should not be taken as limiting the broad meaning of sampling.</i></li> <li><i>Include reference to measures taken to ensure sample representivity and the appropriate calibration of any measurement tools or systems used.</i></li> <li><i>Aspects of the determination of mineralisation that are Material to the Public Report.</i></li> <li><i>In cases where 'industry standard' work has been done this would be relatively simple (eg 'reverse circulation drilling was used to obtain 1 m samples from which 3 kg was pulverised to produce a 30 g charge for fire assay'). In other cases more explanation may be required, such as where there is coarse gold that has inherent sampling problems. Unusual commodities or mineralisation types (eg submarine nodules) may warrant disclosure of detailed information.</i></li> </ul>	<ul style="list-style-type: none"> <li>A total of 11 grab samples were collected during the program, with an additional 3 duplicates.</li> <li>Of these, two samples were taken from mafic greenstones located west of the Oko Shear Contact, one within the base of Trench 2 at 6m below surface and one 30metres south of Trench 2.</li> <li>The remaining grab samples were collected in and around the SOKO camp area and around Trench 1, including from historic artisanal workings and tailings, all of which overlays the Oko Pluton Granitoid.</li> <li>Industry standard grab samples were taken so that each sample was representative of the target horizon and mineralogy at each location point and that no sampling bias was introduced to the process.</li> </ul>
<i>Drilling techniques</i>	<ul style="list-style-type: none"> <li><i>Drill type (eg core, reverse circulation, open-hole hammer, rotary air blast, auger, Bangka, sonic, etc) and details (eg core diameter, triple or standard tube, depth of diamond tails, face-sampling bit or other type, whether core is oriented and if so, by what method, etc).</i></li> </ul>	<ul style="list-style-type: none"> <li>No drilling results are reported in this release</li> </ul>
<i>Drill sample recovery</i>	<ul style="list-style-type: none"> <li><i>Method of recording and assessing core and chip sample recoveries and results assessed.</i></li> <li><i>Measures taken to maximise sample recovery and ensure representative nature of the samples.</i></li> <li><i>Whether a relationship exists between sample recovery and grade and whether sample bias may have occurred due to preferential loss/gain of fine/coarse material.</i></li> </ul>	<ul style="list-style-type: none"> <li>No drilling results are reported in this release.</li> </ul>
<i>Logging</i>	<ul style="list-style-type: none"> <li><i>Whether core and chip samples have been geologically and geotechnically logged to a level of detail to support appropriate Mineral Resource estimation, mining studies and metallurgical studies.</i></li> <li><i>Whether logging is qualitative or quantitative in nature. Core (or costean, channel, etc) photography.</i></li> <li><i>The total length and percentage of the relevant intersections logged.</i></li> </ul>	<ul style="list-style-type: none"> <li>No drilling results are reported in this release.</li> <li>Surface geochemistry samples were qualitatively described and recorded in a geospatial database.</li> </ul>
<i>Sub-sampling techniques and sample preparation</i>	<ul style="list-style-type: none"> <li><i>If core, whether cut or sawn and whether quarter, half or all core taken.</i></li> <li><i>If non-core, whether riffled, tube sampled, rotary split, etc and whether sampled wet or dry.</i></li> <li><i>For all sample types, the nature, quality and</i></li> </ul>	<ul style="list-style-type: none"> <li>Samples were collected at surface, with exception of sample SK-GA-25-00022 which was collected in-situ at the base of a trench.</li> <li>These collected samples were subsequently bagged, tagged and submitted to Actlabs</li> </ul>



Criteria	JORC Code explanation	Commentary
	<p><i>appropriateness of the sample preparation technique.</i></p> <ul style="list-style-type: none"> <li>• <i>Quality control procedures adopted for all sub-sampling stages to maximise representivity of samples.</i></li> <li>• <i>Measures taken to ensure that the sampling is representative of the in situ material collected, including for instance results for field duplicate/second-half sampling.</i></li> <li>• <i>Whether sample sizes are appropriate to the grain size of the material being sampled.</i></li> </ul>	<p>Guyana assay laboratory for analysis.</p>
<p><i>Quality of assay data and laboratory tests</i></p>	<ul style="list-style-type: none"> <li>• <i>The nature, quality and appropriateness of the assaying and laboratory procedures used and whether the technique is considered partial or total.</i></li> <li>• <i>For geophysical tools, spectrometers, handheld XRF instruments, etc, the parameters used in determining the analysis including instrument make and model, reading times, calibrations factors applied and their derivation, etc.</i></li> <li>• <i>Nature of quality control procedures adopted (eg standards, blanks, duplicates, external laboratory checks) and whether acceptable levels of accuracy (ie lack of bias) and precision have been established.</i></li> </ul>	<ul style="list-style-type: none"> <li>• Recent samples were analysed at Actlabs, Guyana following industry best practice standards. Routine QA/QC processes at the Actlabs, including insertion of one blank and one standard within the eight samples, as per standard analytical procedures.</li> <li>• Samples were crushed to 80% passing 2mm, riffle split to 250g and pulverised to 95% passing -150 mesh and split for a 30g Fire Assay (30FA) with AA finish or samples which assayed &gt;3g/t Au (30FA), were re-assayed with a gravimetric finish.</li> </ul>
<p><i>Verification of sampling and assaying</i></p>	<ul style="list-style-type: none"> <li>• <i>The verification of significant intersections by either independent or alternative company personnel.</i></li> <li>• <i>The use of twinned holes.</i></li> <li>• <i>Documentation of primary data, data entry procedures, data verification, data storage (physical and electronic) protocols.</i></li> <li>• <i>Discuss any adjustment to assay data.</i></li> </ul>	<ul style="list-style-type: none"> <li>• No umpire analysis has been performed.</li> <li>• N/A - No drilling reported.</li> <li>• Field data is captured digitally and in field notebooks by hand to ensure a backup of information.</li> <li>• 3 duplicate samples were taken as part of QA/QC protocols</li> </ul>
<p><i>Location of data points</i></p>	<ul style="list-style-type: none"> <li>• <i>Accuracy and quality of surveys used to locate drill holes (collar and down-hole surveys), trenches, mine workings and other locations used in Mineral Resource estimation.</i></li> <li>• <i>Specification of the grid system used.</i></li> <li>• <i>Quality and adequacy of topographic control.</i></li> </ul>	<ul style="list-style-type: none"> <li>• Location for the sample points was determined by handheld GPS.</li> <li>• Location for all sampling data is based on WGS84, Zone 21 North UTM datum.</li> </ul>
<p><i>Data spacing and distribution</i></p>	<ul style="list-style-type: none"> <li>• <i>Data spacing for reporting of Exploration Results.</i></li> <li>• <i>Whether the data spacing and distribution is sufficient to establish the degree of geological and grade continuity appropriate for the Mineral Resource and Ore Reserve estimation procedure(s) and classifications applied.</i></li> <li>• <i>Whether sample compositing has been applied.</i></li> </ul>	<ul style="list-style-type: none"> <li>• Surface geochemistry sampling will not be used in resource estimation.</li> <li>• Data spacing is sufficient for preliminary exploration work designed to assess the mineral prospectivity potential of the project area.</li> </ul>
<p><i>Orientation of data in relation to geological structure</i></p>	<ul style="list-style-type: none"> <li>• <i>Whether the orientation of sampling achieves unbiased sampling of possible structures and the extent to which this is known, considering the deposit type.</i></li> <li>• <i>If the relationship between the drilling orientation and the orientation of key mineralised structures is considered to have introduced a sampling bias, this should be assessed and reported if material.</i></li> </ul>	<ul style="list-style-type: none"> <li>• No drilling results are reported in this release.</li> </ul>



Criteria	JORC Code explanation	Commentary
<i>Sample security</i>	<ul style="list-style-type: none"> <li><i>The measures taken to ensure sample security.</i></li> </ul>	<ul style="list-style-type: none"> <li>The samples were placed into bags and sealed and then put into larger sacks which are then sealed with red tags.</li> <li>An appropriately documented chain of custody form and letter are given to the driver of the truck that then transports the secure samples directly to Actlabs Guyana.</li> </ul>
<i>Audits or reviews</i>	<ul style="list-style-type: none"> <li><i>The results of any audits or reviews of sampling techniques and data.</i></li> </ul>	<ul style="list-style-type: none"> <li>No external audits or reviews are incorporated into this report.</li> </ul>

## Section 2 Reporting of Exploration Results

(Criteria listed in the preceding section also apply to this section.)

Criteria	JORC Code explanation	Commentary
<i>Mineral tenement and land tenure status</i>	<ul style="list-style-type: none"> <li><i>Type, reference name/number, location and ownership including agreements or material issues with third parties such as joint ventures, partnerships, overriding royalties, native title interests, historical sites, wilderness or national park and environmental settings.</i></li> <li><i>The security of the tenure held at the time of reporting along with any known impediments to obtaining a licence to operate in the area.</i></li> </ul>	<ul style="list-style-type: none"> <li>Altair has the right to earn up to 70% of the Greater Oko Project, subject to conditions precedent.</li> <li>There are no other material issues affecting the tenements.</li> <li>All tenements are currently in good standing and have been legally validated by local lawyer specialising in the field.</li> </ul>
<i>Exploration done by other parties</i>	<ul style="list-style-type: none"> <li><i>Acknowledgment and appraisal of exploration by other parties.</i></li> </ul>	<ul style="list-style-type: none"> <li>Historic exploration including surface geochemistry and drilling has been previously announced on 5<sup>th</sup> August 2025, 26<sup>th</sup> August 2025, 8<sup>th</sup> January 2026 and 15<sup>th</sup> January 2026.</li> </ul>
<i>Geology</i>	<ul style="list-style-type: none"> <li><i>Deposit type, geological setting and style of mineralisation.</i></li> </ul>	<ul style="list-style-type: none"> <li>The project area is underlain by Precambrian rocks of the Barama-Mazaruni Group with the bedrock belonging to the Cuyuni Formation.</li> <li>The Cuyuni Formation, sedimentary and volcanic rocks, were compressed and metamorphosed during the Akawaian Episode and Trans-Amazonian Orogeny to form part of a greenstone belt.</li> <li>Previous exploration has demonstrated the presence of an NNE-SSW trending weathered, saprolitized shear zone with high-grade gold mineralization.</li> </ul>
<i>Data aggregation methods</i>	<ul style="list-style-type: none"> <li><i>In reporting Exploration Results, weighting averaging techniques, maximum and/or minimum grade truncations (eg cutting of high grades) and cut-off grades are usually Material and should be stated.</i></li> <li><i>Where aggregate intercepts incorporate short lengths of high grade results and longer lengths of low grade results, the procedure used for such aggregation should be stated and some typical examples of such aggregations should be shown in detail.</i></li> <li><i>The assumptions used for any reporting of metal equivalent values should be clearly stated.</i></li> </ul>	<ul style="list-style-type: none"> <li>No metal equivalent values are reported for the Greater Oka Project.</li> </ul>



Criteria	JORC Code explanation	Commentary
<i>Relationship between mineralisation widths and intercept lengths</i>	<ul style="list-style-type: none"> <li>• <i>These relationships are particularly important in the reporting of Exploration Results.</i></li> <li>• <i>If the geometry of the mineralisation with respect to the drill hole angle is known, its nature should be reported.</i></li> <li>• <i>If it is not known and only the down hole lengths are reported, there should be a clear statement to this effect (eg 'down hole length, true width not known').</i></li> </ul>	<ul style="list-style-type: none"> <li>• True widths are not known.</li> <li>• The true extent and geometry of the mineralisation is not known yet.</li> </ul>
<i>Diagrams</i>	<ul style="list-style-type: none"> <li>• <i>Appropriate maps and sections (with scales) and tabulations of intercepts should be included for any significant discovery being reported. These should include, but not be limited to a plan view of drill hole collar locations and appropriate sectional views.</i></li> </ul>	<ul style="list-style-type: none"> <li>• Appropriate maps and sections are included in the main body of this announcement.</li> </ul>
<i>Balanced reporting</i>	<ul style="list-style-type: none"> <li>• <i>Where comprehensive reporting of all Exploration Results is not practicable, representative reporting of both low and high grades and/or widths should be practiced to avoid misleading reporting of Exploration Results.</i></li> </ul>	<ul style="list-style-type: none"> <li>• Reporting is considered to be balanced.</li> <li>• All relevant and material exploration data for the target areas has been reported or referenced.</li> </ul>
<i>Other substantive exploration data</i>	<ul style="list-style-type: none"> <li>• <i>Other exploration data, if meaningful and material, should be reported including (but not limited to): geological observations; geophysical survey results; geochemical survey results; bulk samples – size and method of treatment; metallurgical test results; bulk density, groundwater, geotechnical and rock characteristics; potential deleterious or contaminating substances.</i></li> </ul>	<ul style="list-style-type: none"> <li>• All relevant and meaningful exploration data received and validated by Altair has been included in this release.</li> </ul>
<i>Further work</i>	<ul style="list-style-type: none"> <li>• <i>The nature and scale of planned further work (eg tests for lateral extensions or depth extensions or large-scale step-out drilling).</i></li> <li>• <i>Diagrams clearly highlighting the areas of possible extensions, including the main geological interpretations and future drilling areas, provided this information is not commercially sensitive.</i></li> </ul>	<ul style="list-style-type: none"> <li>• Detailed geochemistry should be carried out to determine trends of known mineralised zones and to delineate high grade trends within the identified mineralised zones.</li> <li>• Further drilling is recommended to test step-out and depth extensions to the currently known mineralisation, and to infill some areas of the known body to increase the confidence in support of a resource estimate.</li> <li>• Any further exploration activity will depend on assessment of current results.</li> </ul>
<i>Criteria</i>	<i>JORC Code explanation</i>	<i>Commentary</i>
<i>Mineral tenement and land tenure status</i>	<ul style="list-style-type: none"> <li>• <i>Type, reference name/number, location and ownership including agreements or material issues with third parties such as joint ventures, partnerships, overriding royalties, native title interests, historical sites, wilderness or national park and environmental settings.</i></li> <li>• <i>The security of the tenure held at the time of reporting along with any known impediments to obtaining a licence to operate in the area.</i></li> </ul>	<ul style="list-style-type: none"> <li>• Altair has the right to earn up to 70% of the Greater Oko Project, subject to conditions precedent.</li> <li>• There are no other material issues affecting the tenements.</li> <li>• All tenements are currently in good standing and have been legally validated by local lawyer specialising in the field.</li> </ul>
<i>Exploration done by other parties</i>	<ul style="list-style-type: none"> <li>• <i>Acknowledgment and appraisal of exploration by other parties.</i></li> </ul>	<ul style="list-style-type: none"> <li>• Historic exploration including surface geochemistry and drilling has been previously announced on 5th August 2025, 26th August 2025, 8th January 2026 and 15th January 2026.</li> </ul>



Criteria	JORC Code explanation	Commentary
<i>Geology</i>	<ul style="list-style-type: none"> <li><i>Deposit type, geological setting and style of mineralisation.</i></li> </ul>	<ul style="list-style-type: none"> <li>The project area is underlain by Precambrian rocks of the Barama-Mazaruni Group with the bedrock belonging to the Cuyuni Formation.</li> <li>The Cuyuni Formation, sedimentary and volcanic rocks, were compressed and metamorphosed during the Akawaian Episode and Trans-Amazonian Orogeny to form part of a greenstone belt.</li> <li>Previous exploration has demonstrated the presence of an NNE-SSW trending weathered, saprolitized shear zone with high-grade gold mineralization.</li> </ul>
<i>Data aggregation methods</i>	<ul style="list-style-type: none"> <li><i>In reporting Exploration Results, weighting averaging techniques, maximum and/or minimum grade truncations (eg cutting of high grades) and cut-off grades are usually Material and should be stated.</i></li> <li><i>Where aggregate intercepts incorporate short lengths of high grade results and longer lengths of low grade results, the procedure used for such aggregation should be stated and some typical examples of such aggregations should be shown in detail.</i></li> <li><i>The assumptions used for any reporting of metal equivalent values should be clearly stated.</i></li> </ul>	<ul style="list-style-type: none"> <li>No metal equivalent values are reported for the Greater Oka Project.</li> </ul>
<i>Relationship between mineralisation widths and intercept lengths</i>	<ul style="list-style-type: none"> <li><i>These relationships are particularly important in the reporting of Exploration Results.</i></li> <li><i>If the geometry of the mineralisation with respect to the drill hole angle is known, its nature should be reported.</i></li> <li><i>If it is not known and only the down hole lengths are reported, there should be a clear statement to this effect (eg 'down hole length, true width not known').</i></li> </ul>	<ul style="list-style-type: none"> <li>True widths are not known.</li> <li>The true extent and geometry of the mineralisation is not known yet.</li> </ul>
<i>Diagrams</i>	<ul style="list-style-type: none"> <li><i>Appropriate maps and sections (with scales) and tabulations of intercepts should be included for any significant discovery being reported These should include, but not be limited to a plan view of drill hole collar locations and appropriate sectional views.</i></li> </ul>	<ul style="list-style-type: none"> <li>Appropriate maps and sections are included in the main body of this announcement.</li> </ul>
<i>Balanced reporting</i>	<ul style="list-style-type: none"> <li><i>Where comprehensive reporting of all Exploration Results is not practicable, representative reporting of both low and high grades and/or widths should be practiced to avoid misleading reporting of Exploration Results.</i></li> </ul>	<ul style="list-style-type: none"> <li>Reporting is considered to be balanced.</li> <li>All relevant and material exploration data for the target areas has been reported or referenced.</li> </ul>
<i>Other substantive exploration data</i>	<ul style="list-style-type: none"> <li><i>Other exploration data, if meaningful and material, should be reported including (but not limited to): geological observations; geophysical survey results; geochemical survey results; bulk samples – size and method of treatment; metallurgical test results; bulk density, groundwater, geotechnical and rock characteristics; potential deleterious or</i></li> </ul>	<ul style="list-style-type: none"> <li>All relevant and meaningful exploration data received and validated by Altair has been included in this release.</li> </ul>



Criteria	JORC Code explanation	Commentary
	<i>contaminating substances.</i>	
<i>Further work</i>	<ul style="list-style-type: none"> <li>• <i>The nature and scale of planned further work (eg tests for lateral extensions or depth extensions or large-scale step-out drilling).</i></li> <li>• <i>Diagrams clearly highlighting the areas of possible extensions, including the main geological interpretations and future drilling areas, provided this information is not commercially sensitive.</i></li> </ul>	<ul style="list-style-type: none"> <li>• Detailed geochemistry should be carried out to determine trends of known mineralised zones and to delineate high grade trends within the identified mineralised zones.</li> <li>• Further drilling is recommended to test step-out and depth extensions to the currently known mineralisation, and to infill some areas of the known body to increase the confidence in support of a resource estimate.</li> <li>• Any further exploration activity will depend on assessment of current results.</li> </ul>

